

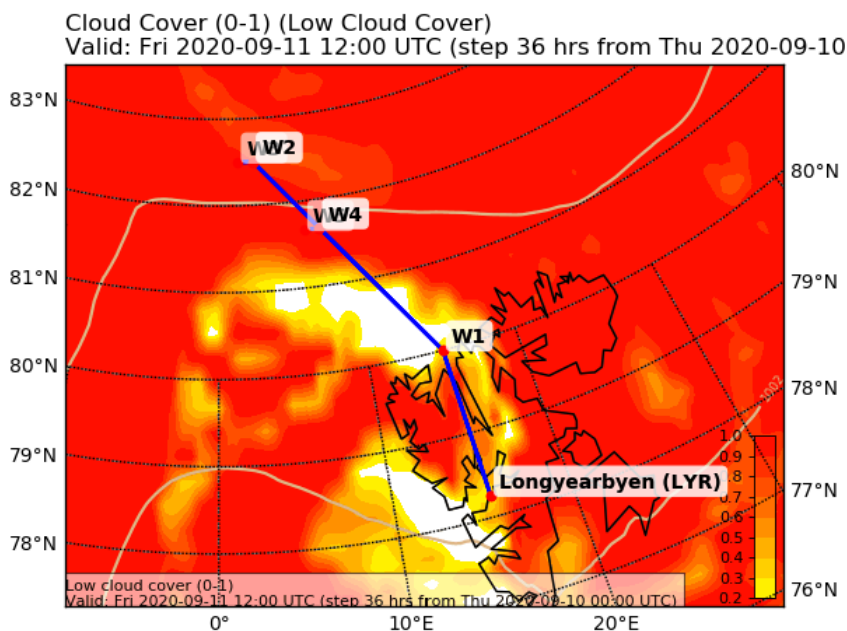
# MOSAIC-ACA Flight 2020 09 11

**POLAR 5**

Crew: Mission PI André Ehrlich  
AWI Clemens Collin  
AWI Hannes Probst  
Eagle/Hawk Michael Schäfer  
MiRAC Friedhelm Jansen  
PMS Valerian Hahn

Est. Take Off: 10:00 LT  
Est. Duration: 5.5 Hours

Waypoints: **W1:** 80° 00' N, 15° 00' E  
**W2:** 82° 30' N, 3° 00' E  
**W3:** 82° 30' N, 1° 20' E  
**W4:** 81° 40' N, 8° 00' E  
**W5:** 81° 40' N, 6° 48' E



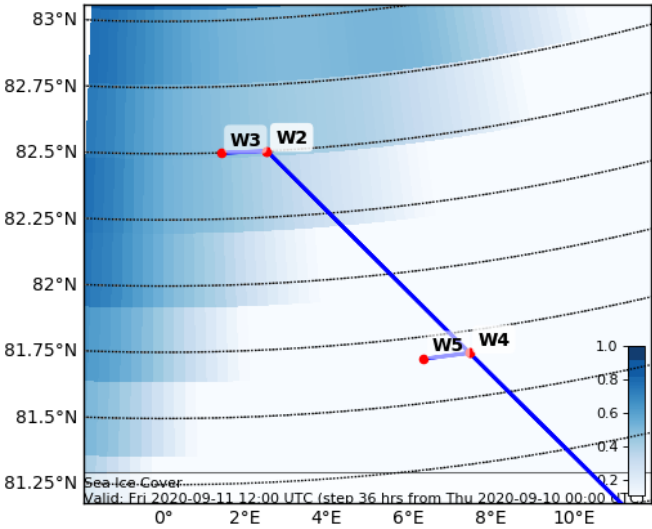
## Flight Plan

**LYR – W1** ascend FL 100: **105 NM @cruising speed** **40 min**  
**W1 – W2** at FL 100: **185 NM @cruising speed** **70 min**  
**W2 – W3** descend to cloud top with 2,000 ft/min (inside cloud 500 ft/min) **15 min**  
**W3 ↔ W2** different levels from below: **10 NM @120kn** **40 min**  
**W2 – W4** saw tooth trough clouds: **65 NM @140kn** **35 min**  
**W4 ↔ W5** different levels from below : **10 NM @120kn** **40 min**  
**W4 – W1** at FL100: **120 NM @ cruising speed** **45 min**  
**W1 – LYR** at FL100 → descending: **105 NM @ cruising speed** **40 min**

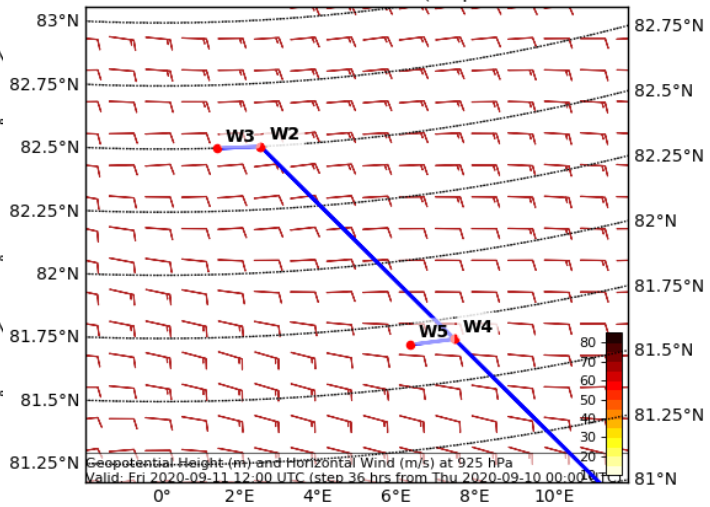
**Total:**

**5 hr 25 min**

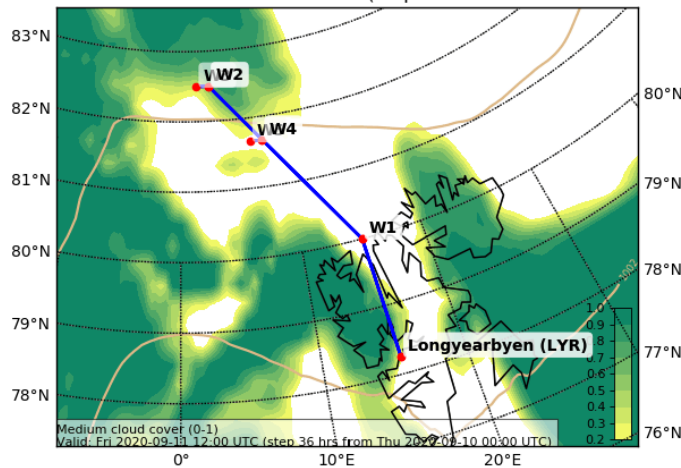
Sea Ice Cover Fraction (0-1) (pseudocolor plot)  
Valid: Fri 2020-09-11 12:00 UTC (step 36 hrs from Thu 2020-09-10 00:00 UTC)



Geopotential Height (m) and Horizontal Wind (m/s) (Wind Speed and Direction)  
Valid: Fri 2020-09-11 12:00 UTC (step 36 hrs from Thu 2020-09-10 00:00 UTC)



Cloud Cover (0-1) (Medium Cloud Cover)  
Valid: Fri 2020-09-11 12:00 UTC (step 36 hrs from Thu 2020-09-10 00:00 UTC)



Cloud Cover (0-1) Vertical Section  
Valid: Fri 2020-09-11 12:00 UTC (step 36 hrs from Thu 2020-09-10 00:00 UTC)

