

# MOSAIC-ACA Flight 2020 09 10

**POLAR 5**

## Crew:

Mission PI	Manfred Wendisch	
AWI	Hannes Probst	
AWI	Clemens Gollin	<b>Est. Take Off:</b> 10:30 LT
Eagle/Hawk	Marcus Klingebiel	
MiRAC	Mario Mech	<b>Est. Duration:</b> 5 Hours 49 min
PMS	Manuel Moser	

## Coordinates:

LYR	78° 14,7'	15° 28,9'
NY	78° 55,4'	11° 55,4'
W1	79° 37,8'	7° 00,0'
W2	82° 30,0'	3° 00,0'
W3	82° 39,0'	3° 45,6'
W4	82° 00,0'	10° 00,0'
W5	82° 09,0'	10° 45,0'
W6	79° 22,2'	8° 56,4'

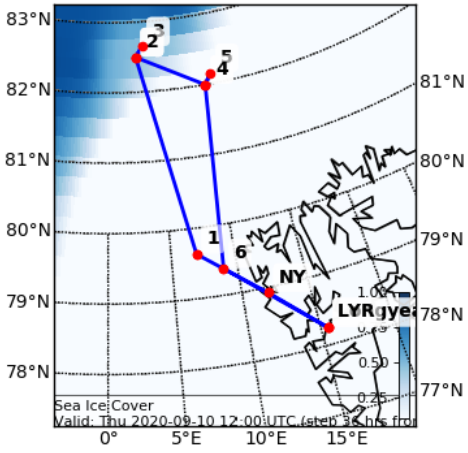
7 dropsondes (at W1; 80°30'N 6°E; 81°30'N 4°40,8'E;  
W2; W4; 81°N 9°33'E; 80°N 9°8.4'E)

## Flight Plan:

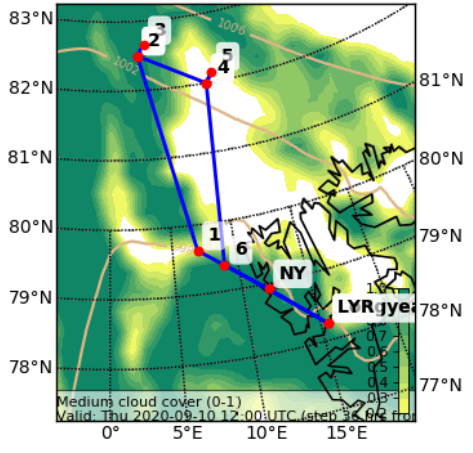
<b>LYR – NY – W1</b> ascend to FL100	<b>128 NM @ 160 kn</b>	<b>48 min</b>
<b>W1 – W2</b> stay at FL100	<b>176 NM @ 160 kn</b>	<b>66 min</b>
<b>W2 – W3</b> stay at FL100	<b>10 NM @ 160 kn</b>	<b>10 min</b>
<b>W3 – W2</b> descend to cloud top with 1,500 ft/min (inside cloud 500 ft/min)		<b>10 min</b>
<b>W2 ↔ W3</b> different levels from below	<b>10 NM @ 120 kn</b>	<b>40 min</b>
<b>W2 – W4</b> saw tooth through clouds	<b>64 NM @ 140 kn</b>	<b>35 min</b>
<b>W4 ↔ W5</b> different levels from below	<b>10 NM @ 120 kn</b>	<b>40 min</b>
<b>W4 – W6</b> at FL100	<b>158 NM @ 160 kn</b>	<b>60 min</b>
<b>W6 – NY – LYR</b> descending	<b>102 NM @ 160 kn</b>	<b>40 min</b>

**Total:** **ca. 5 hours 49 min**

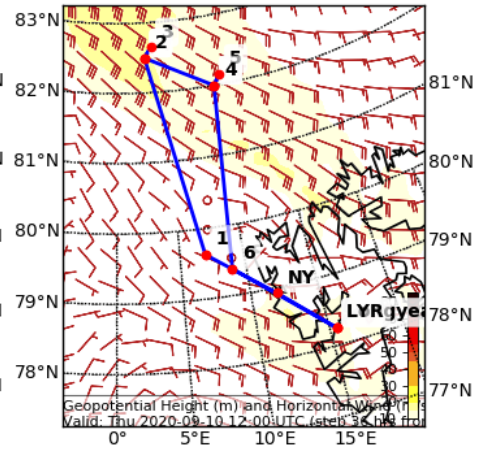
Sea Ice Cover Fraction (0-1) (pseudoc  
Valid: Thu 2020-09-10 12:00 UTC (ste



Cloud Cover (0-1) (Medium Cloud Cov  
Valid: Thu 2020-09-10 12:00 UTC (ste



Geopotential Height (m) and Horizontal  
Valid: Thu 2020-09-10 12:00 UTC (ste



# ICON

Cloud Cover (0-1) Vertical Section  
Valid: Thu 2020-09-10 12:00 UTC (step 36 hrs from Wed 2020-09-09 00:00 UTC)

