

# MOSAIC-ACA Flight 2020 09 08

**POLAR 5**

## Crew:

Mission PI

Christof Lüpkes

AWI

Hannes Probst

AWI

Martin Germann

**Est. Take Off:** 10:00 LT

Eagle/Hawk

Michael Schäfer

MiRAC

Friedhelm Jansen

**Est. Duration:** 5 Hours 33 min

PMS

Valerian Hahn

## Coordinates:

LYR	78° 14,7'	15° 28,9'
NY	78° 55,4'	11° 55,4'
W1	79° 37,8'	7° 00,0'
W2	82° 30,0'	7° 00,0'
W3	82° 30,0'	5° 42,0'
W4	81° 30,0'	7° 00,0'
W5	81° 30,0'	5° 48,0'

10 dropsondes between W1↔W2

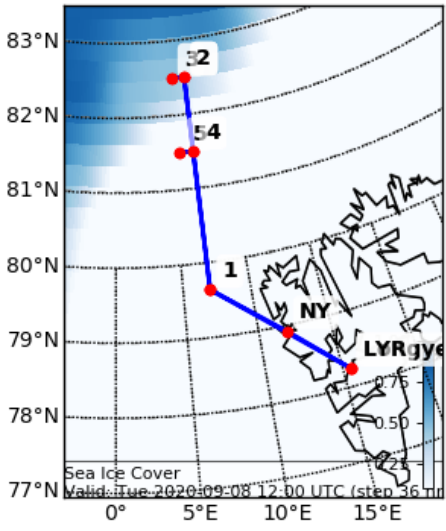
## Flight Plan:

<b>LYR – NY – W1</b> ascend to FL100	<b>128 NM @ 160 kn</b>	<b>48 min</b>
<b>W1 – W2</b> stay at FL100	<b>172 NM @ 160 kn</b>	<b>65 min</b>
<b>W2 – W3</b> stay at FL100	<b>10 NM @ 160 kn</b>	<b>10 min</b>
<b>W3 – W2</b> descend to cloud top with 2,000 ft/min (inside cloud 500 ft/min)		<b>10 min</b>
<b>W2 ↔ W3</b> different levels from below	<b>10 NM @ 120 kn</b>	<b>40 min</b>
<b>W2 – W4</b> saw tooth through clouds	<b>60 NM @ 140 kn</b>	<b>30 min</b>
<b>W4 ↔ W5</b> different levels from below	<b>10 NM @ 120 kn</b>	<b>40 min</b>
<b>W4 – W1</b> at FL100	<b>112 NM @ 160 kn</b>	<b>42 min</b>
<b>W1 – NY – LYR</b> descending	<b>128 NM @ 160 kn</b>	<b>48 min</b>

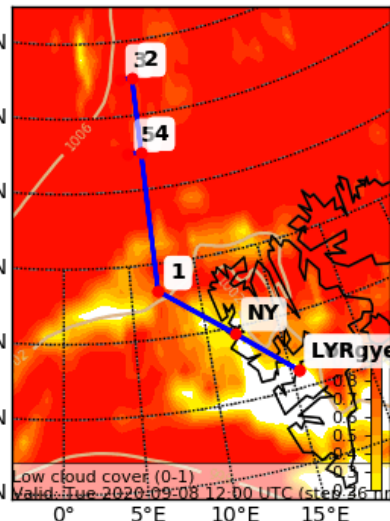
**Total:**

**ca 5 hours 33 min**

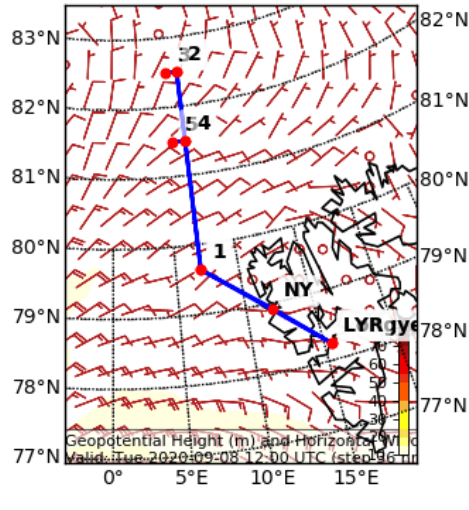
Sea Ice Cover Fraction (0-1) (pseudocolor plot)  
Valid: Tue 2020-09-08 12:00 UTC



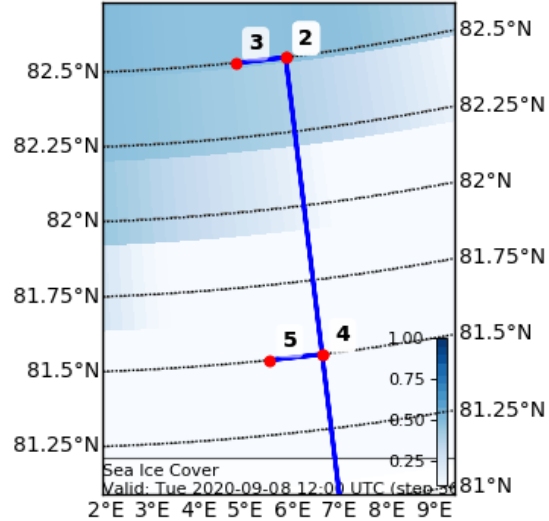
Cloud Cover (0-1) (Low Cloud Co)  
Valid: Tue 2020-09-08 12:00 UTC



Geopotential Height (m) and Horizontal Wind  
Valid: Tue 2020-09-08 12:00 UTC



Sea Ice Cover Fraction (0-1) (pseudocolor plot)  
Valid: Tue 2020-09-08 12:00 UTC (step 36 hrs from Mon 2020-09-07 00:00 UTC)



EPSG:777

Cloud Cover (0-1) Vertical Section  
Valid: Tue 2020-09-08 12:00 UTC (step 36 hrs from Mon 2020-09-07 00:00 UTC)

