

MOSAIC-ACA Flight 2020 09 07—long

POLAR 5

Crew:

Mission PI

André Ehrlich

AWI

Clemens Gollin

AWI

Martin Gehrman

Est. Take Off: 10:00 LT

Eagle/Hawk

Michael Schäfer

MiRAC

Mario Mech

Est. Duration: 5 Hours 36 min

PMS

Manuel Moser

Coordinates:

LYR	78° 14,7'	15° 28,9'
NY	78° 55,4'	11° 55,4'
W1	79° 20,0'	9° 00,0'
W2	83° 00,0'	9° 00,0'
W3	83° 00,0'	1° 00,0'
W4	78° 15,0'	1° 00,0'

12 dropsondes

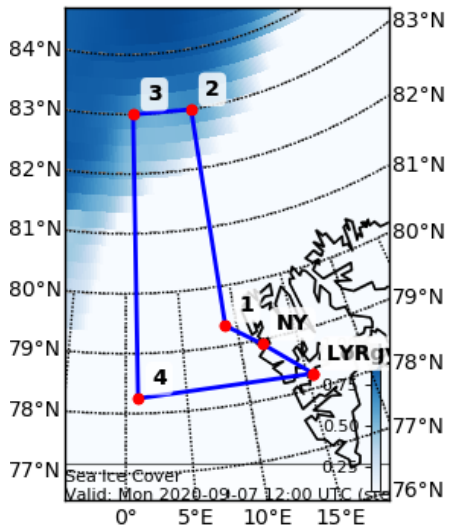
Flight Plan:

LYR – NY –W1 ascend to FL100	100 NM @ 150 kn	40 min
W1 – W2 stay at FL100	221 NM @ 150 kn	88 min
W2 – W3 stay at FL100	58 NM @ 150 kn	23 min
W3 – W4 stay at FL100	286 NM @ 150 kn	114 min
W4 – LYR descending	177 NM @ 150 kn	71 min
		336 min

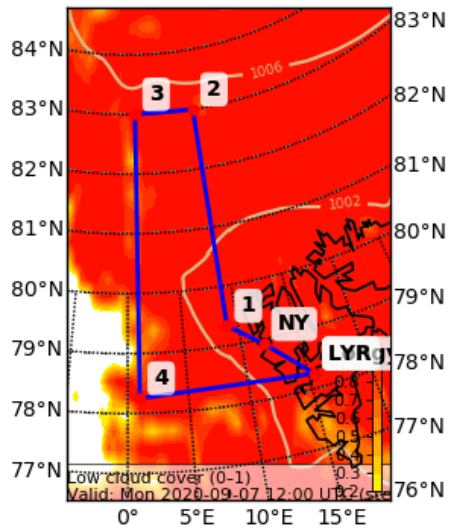
Total:

ca 5 hours 36 min

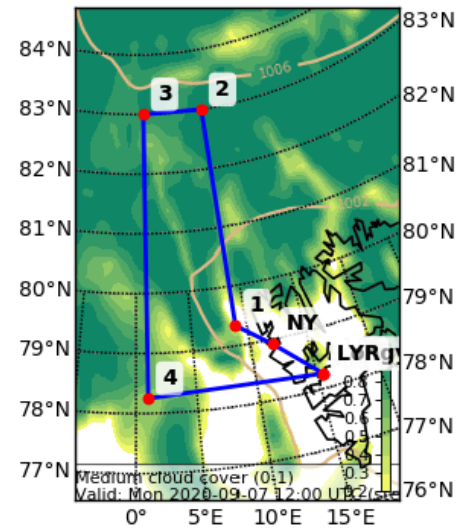
Sea Ice Cover Fraction (0-1) (p
Valid: Mon 2020-09-07 12:00 UTC



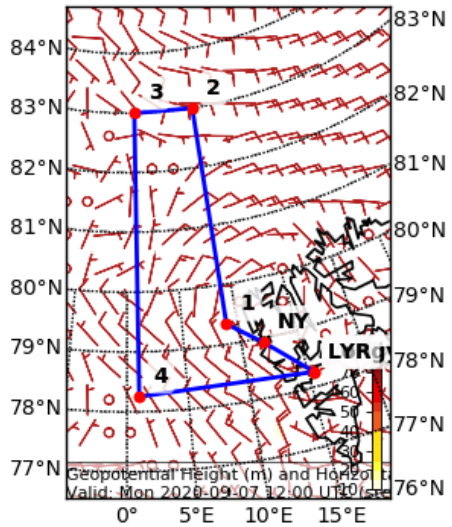
Cloud Cover (0-1) (Low Cloud C
Valid: Mon 2020-09-07 12:00 UTC



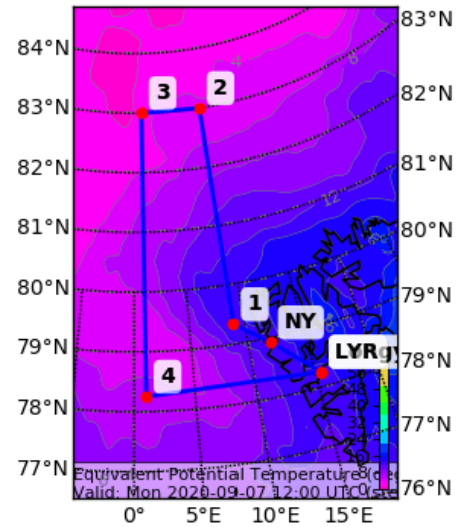
Cloud Cover (0-1) (Medium Cl
Valid: Mon 2020-09-07 12:00 UTC



Geopotential Height (m) and H
Valid: Mon 2020-09-07 12:00 UTC



Equivalent Potential Temperat
Valid: Mon 2020-09-07 12:00 UTC



Cloud Cover (0-1) Vertical Section

Valid: Mon 2020-09-07 12:00 UTC (step 36 hrs from Sun 2020-09-06 00:00 UTC)

