

MOSAIC-ACA Flight 2020 09 12

POLAR 5

Crew:

Mission PI

Christof Lüpkes

AWI

Hannes Probst

AWI

Est. Take Off: 11:00 LT

Eagle/Hawk

Marcus Klingebiel

MiRAC

Mario Mech

Est. Duration: 5 Hours 19 min

PMS

Manuel Moser

Coordinates:

LYR	78° 14,7'	15° 28,9'
NY	78° 55,4'	11° 55,4'
W1	80° 00,0'	-8° 00,0'
W2	80° 10,2'	-8° 00,0'
W3	79° 45,0'	0° 00,0'
W4	79° 55,2'	0° 00,0'

7 dropsondes between NY ← → W1

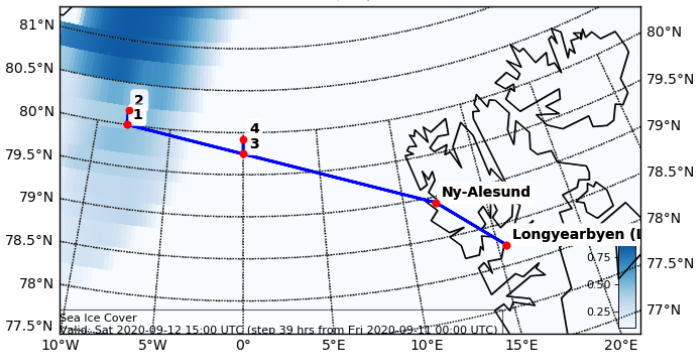
Flight Plan:

LYR – NY – W1 ascend to FL100	286 NM @ 160 kn	107 min
W1 – W2 stay at FL100	10 NM @ 160 kn	10 min
W2 – W1 descend to cloud top with 2,000 ft/min (inside cloud 500 ft/min)		10 min
W1 ↔ W2 different levels from below	10 NM @ 120 kn	40 min
W1 – W3 saw tooth through clouds	86 NM @ 140 kn	37 min
W3 ↔ W4 different levels from below	10 NM @ 120 kn	40 min
W3 – NY – LYR descending	200 NM @ 160 kn	75 min

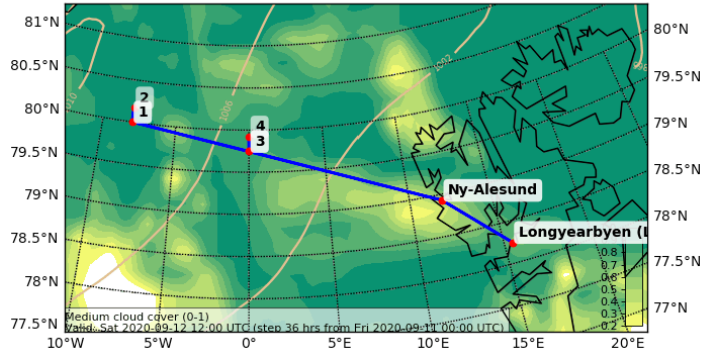
Total:

ca. 5 hours 19 min

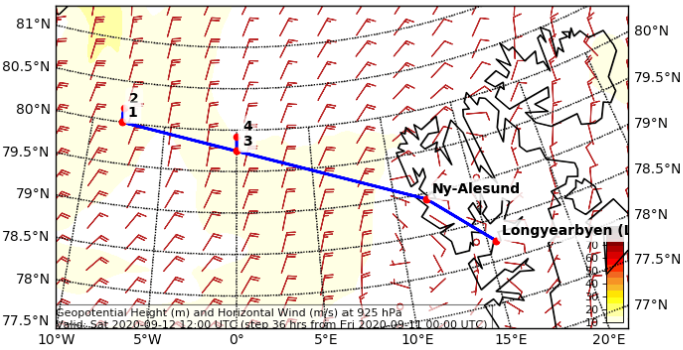
Sea Ice Cover Fraction (0-1) (pseudocolor plot)
Valid: Sa 2020-09-12 15:00 UTC (step 39 hrs from Fr 2020-09-11 00:00 UTC)



Cloud Cover (0-1) (Medium Cloud Cover)
Valid: Sa 2020-09-12 12:00 UTC (step 36 hrs from Fr 2020-09-11 00:00 UTC)



Geopotential Height (m) and Horizontal Wind (m/s) (Wind Speed 10-85 m/s) at 925.0 (Pa)
Valid: Sa 2020-09-12 12:00 UTC (step 36 hrs from Fr 2020-09-11 00:00 UTC)



Cloud Cover (0-1) Vertical Section
Valid: Sa 2020-09-12 12:00 UTC (step 36 hrs from Fr 2020-09-11 00:00 UTC)

