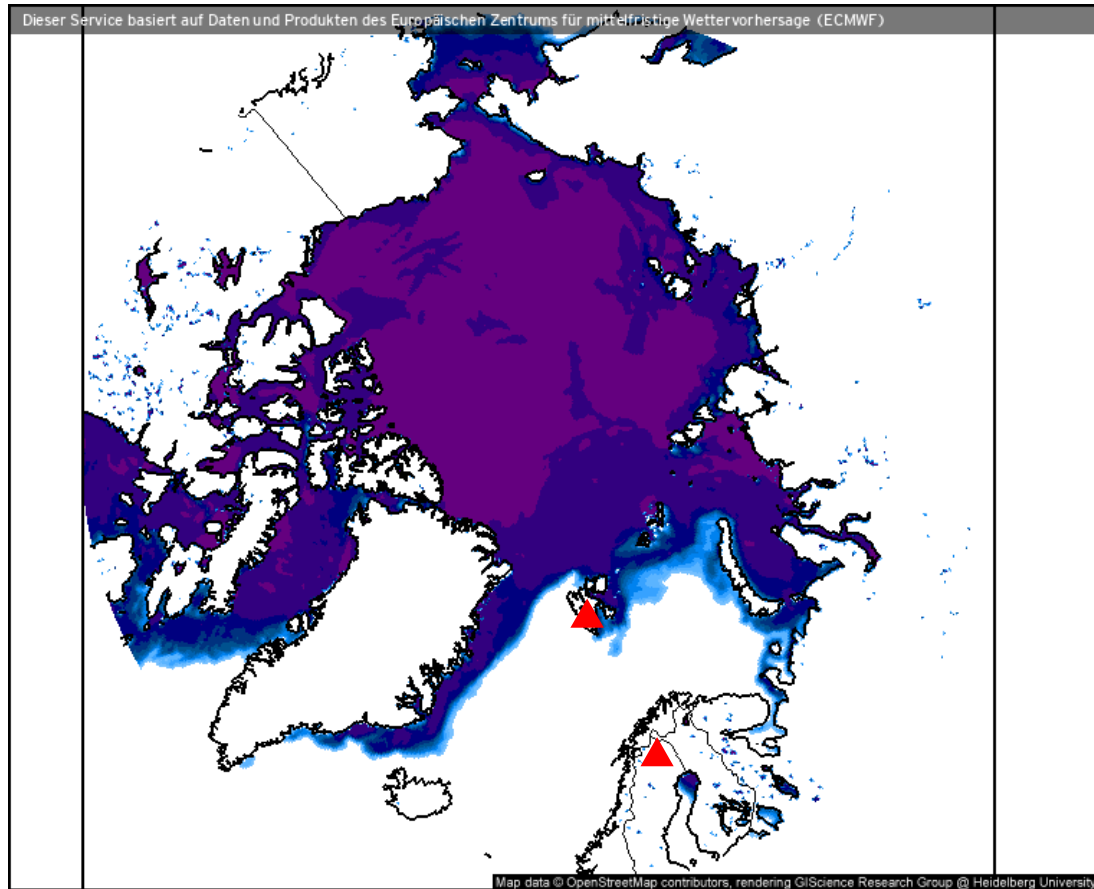


Weather observations

18.04.2021

Marcus | Johannes

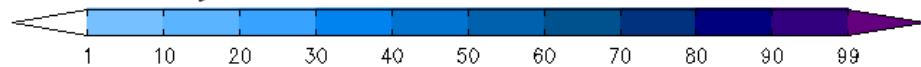
Sea ice cover (18.04.2021 12 UTC)



- Still pronounced Whaler's Bay polynia
- Ice east of Svalbard is slowly decreasing

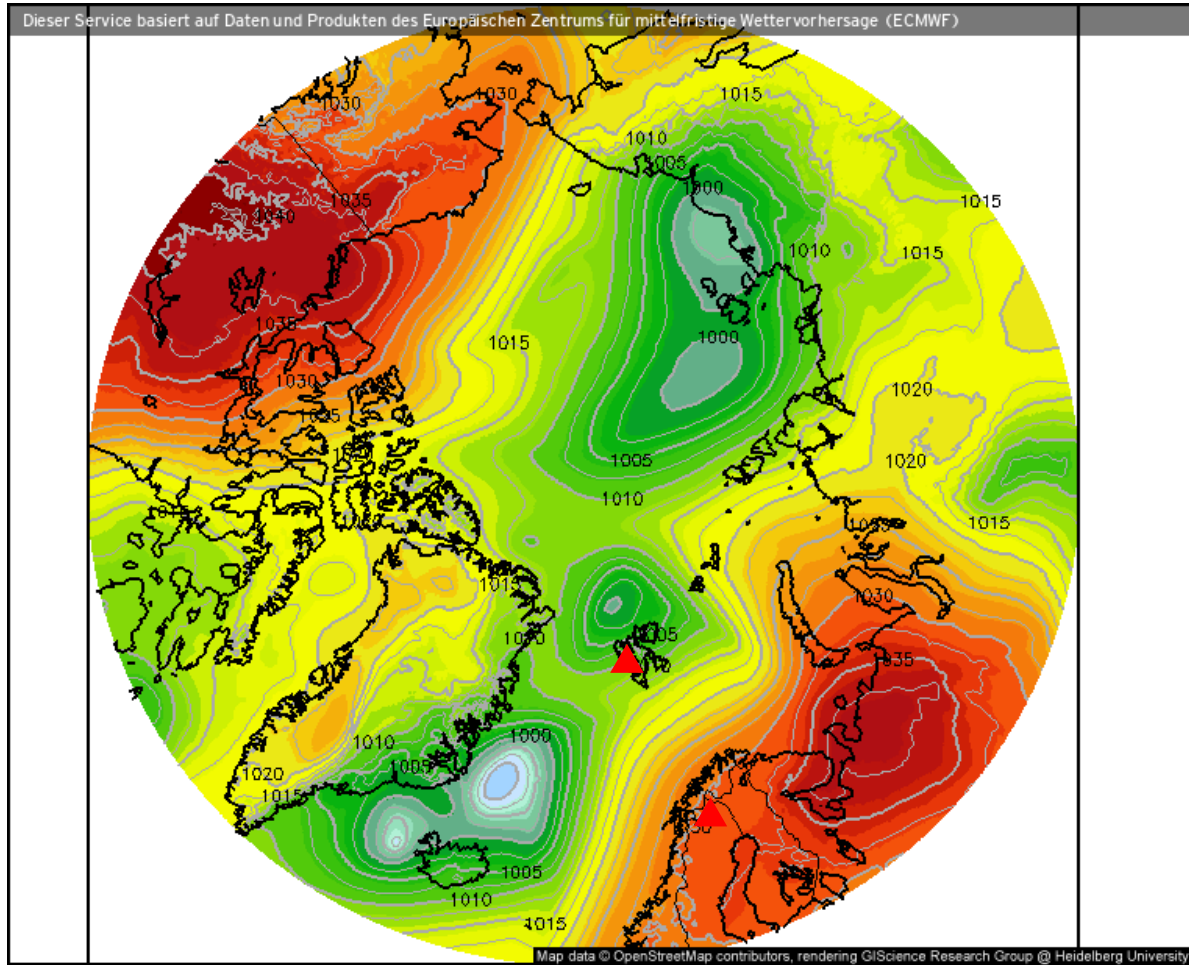
Eisbedeckung (Meere und Seen) (%)

Prognose für
So. 18.04.2021, 14:00 Uhr MESZ



Nordpol
ECMWF/Global Euro HD vom 18.04.2021/00z

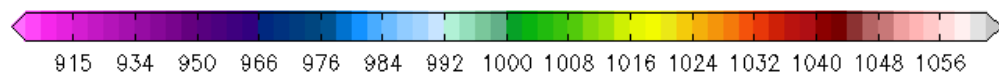
Surface air pressure (18.04.2021 12 UTC)



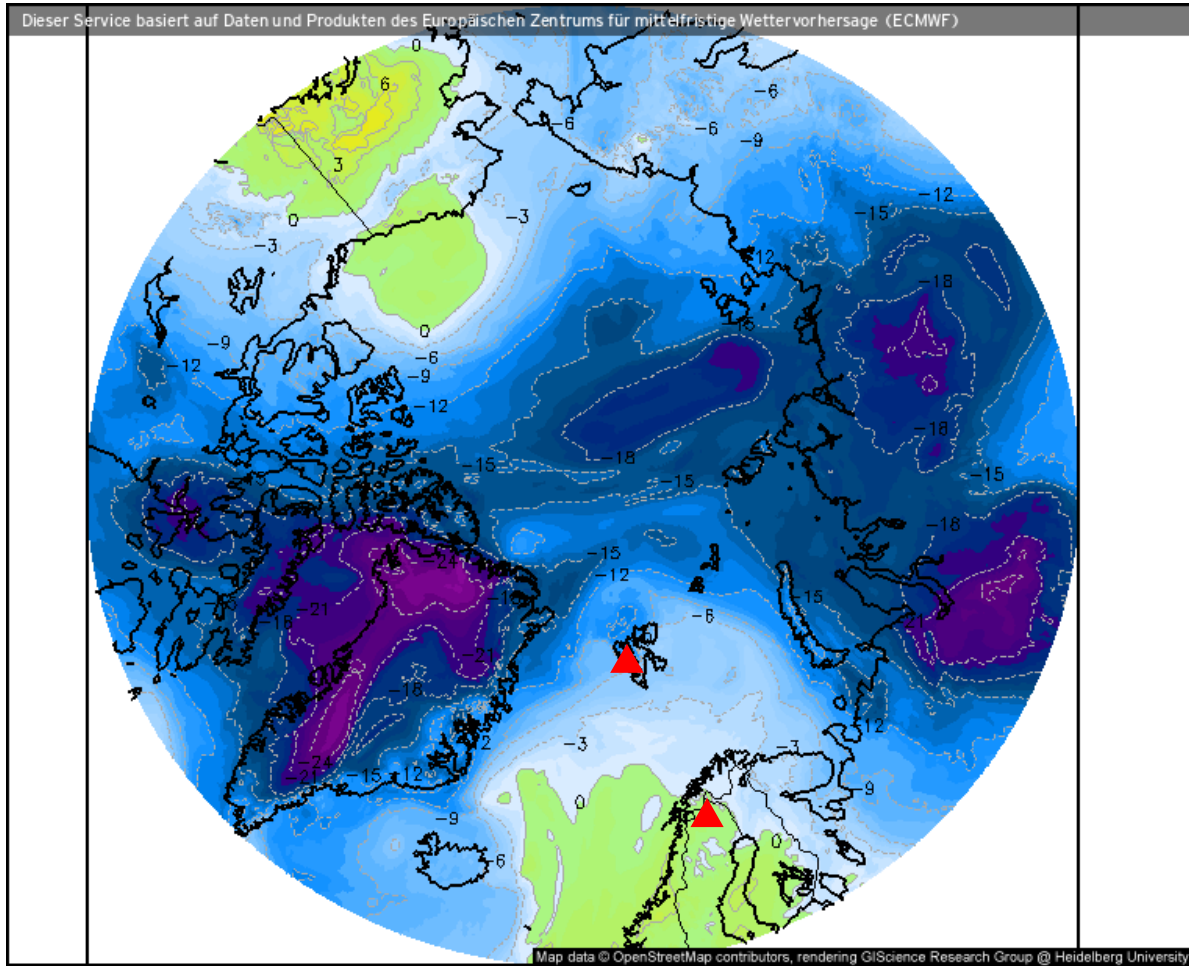
- North of Svalbard is influenced by two low pressure systems

Luftdruck auf Meereshöhe (hPa)

Prognose für
So. 18.04.2021, 14:00 Uhr MESZ

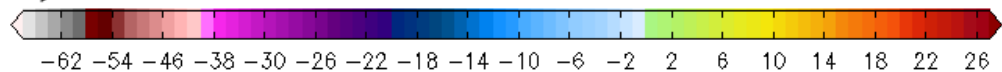


Temperature 850 hPa (18.04.2021 12 UTC)



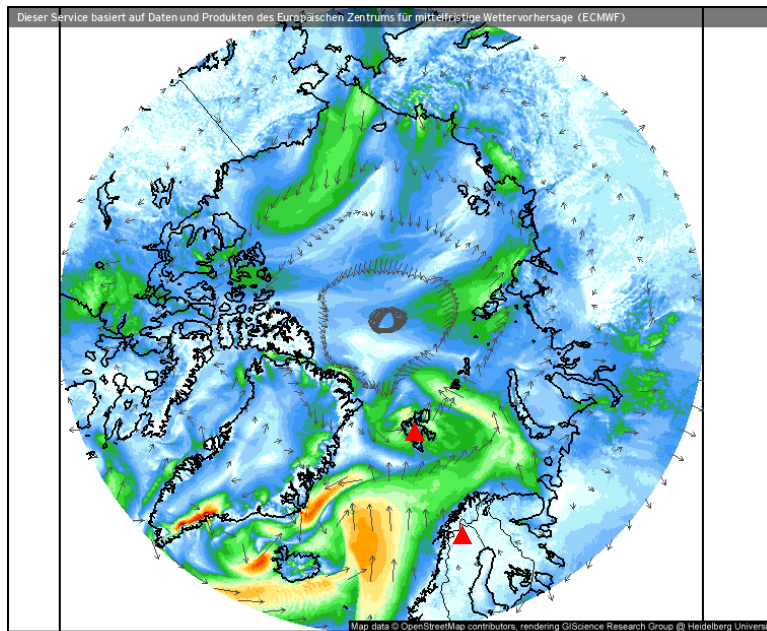
Temperatur, 850hPa (°C)

Prognose für
So. 18.04.2021, 14:00 Uhr MESZ

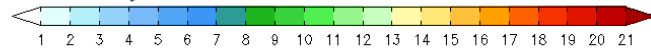


Wind, θ_{eq} , z, IWV (18.04.2021 12 UTC)

Wind speed and streamlines



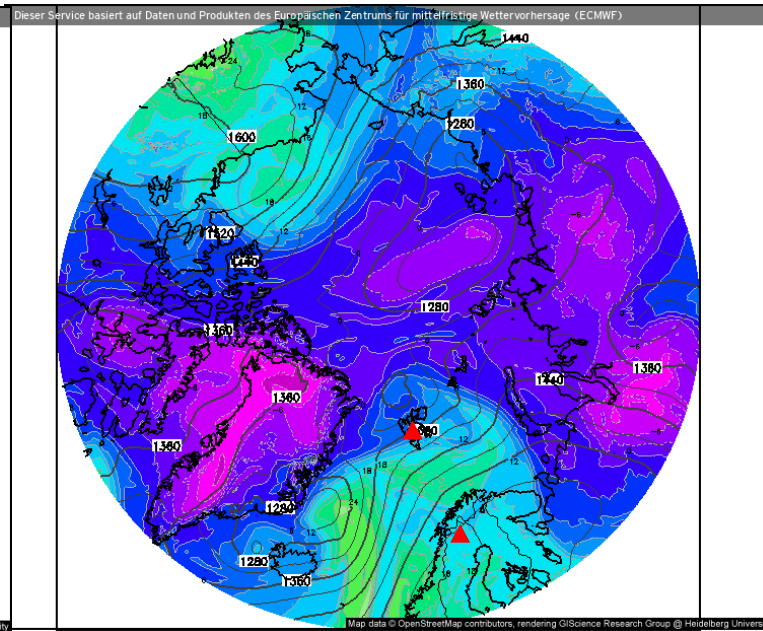
Windrichtung und Windmittel (m/s)



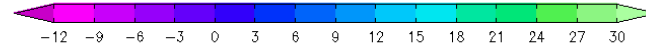
Nordpol
ECMWF/Global Euro HD vom 18.04.2021/00z

Prognose für
So. 18.04.2021, 14:00 Uhr MESZ
ECMWF kachelmannwetter.com
WETTER HD

Theta-E and geopotential (850 hPa)



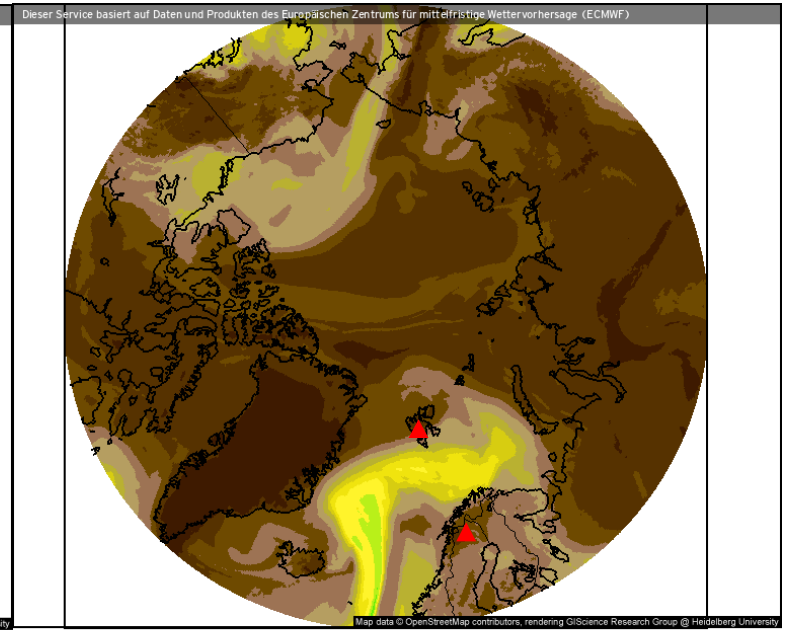
Theta-E und Geopot, 850hPa (°C)



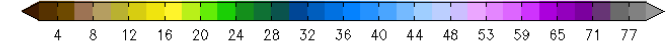
Nordpol
ECMWF/Global Euro HD vom 18.04.2021/00z

Prognose für
So. 18.04.2021, 14:00 Uhr MESZ
ECMWF kachelmannwetter.com
WETTER HD

Precipitable water



Atmosphärisches Niederschlagswasser (mm)



Nordpol
ECMWF/Global Euro HD vom 18.04.2021/00z

Prognose für
18.04.2021, 14:00 Uhr MESZ
ECMWF kachelmannwetter.com
WETTER HD

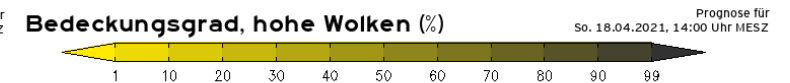
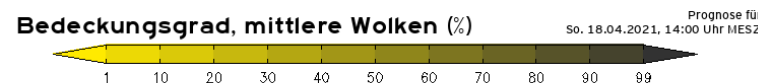
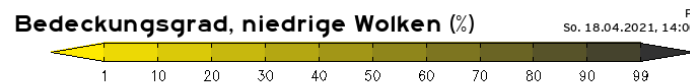
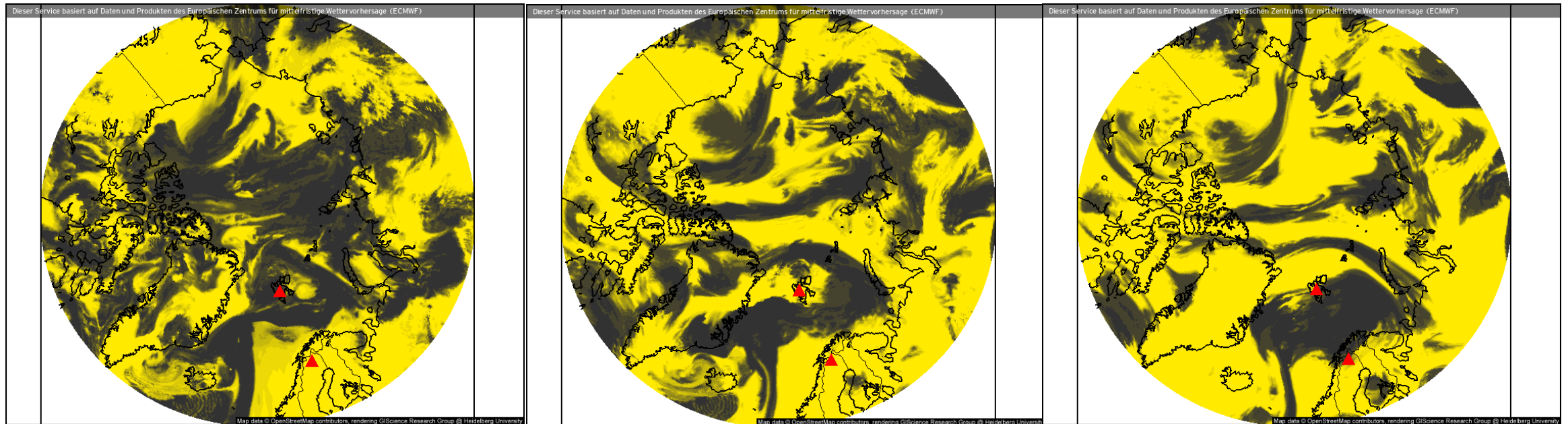
- Weak winds over Fram Strait

Clouds (18.04.2021 12 UTC)

Low-level clouds

Mid-level clouds

High-level clouds



Nordpol
ECMWF/Global Euro HD vom 18.04.2021/00Z

ECMWF kachelmannwetter.com
WETTER HD

Nordpol
ECMWF/Global Euro HD vom 18.04.2021/00Z

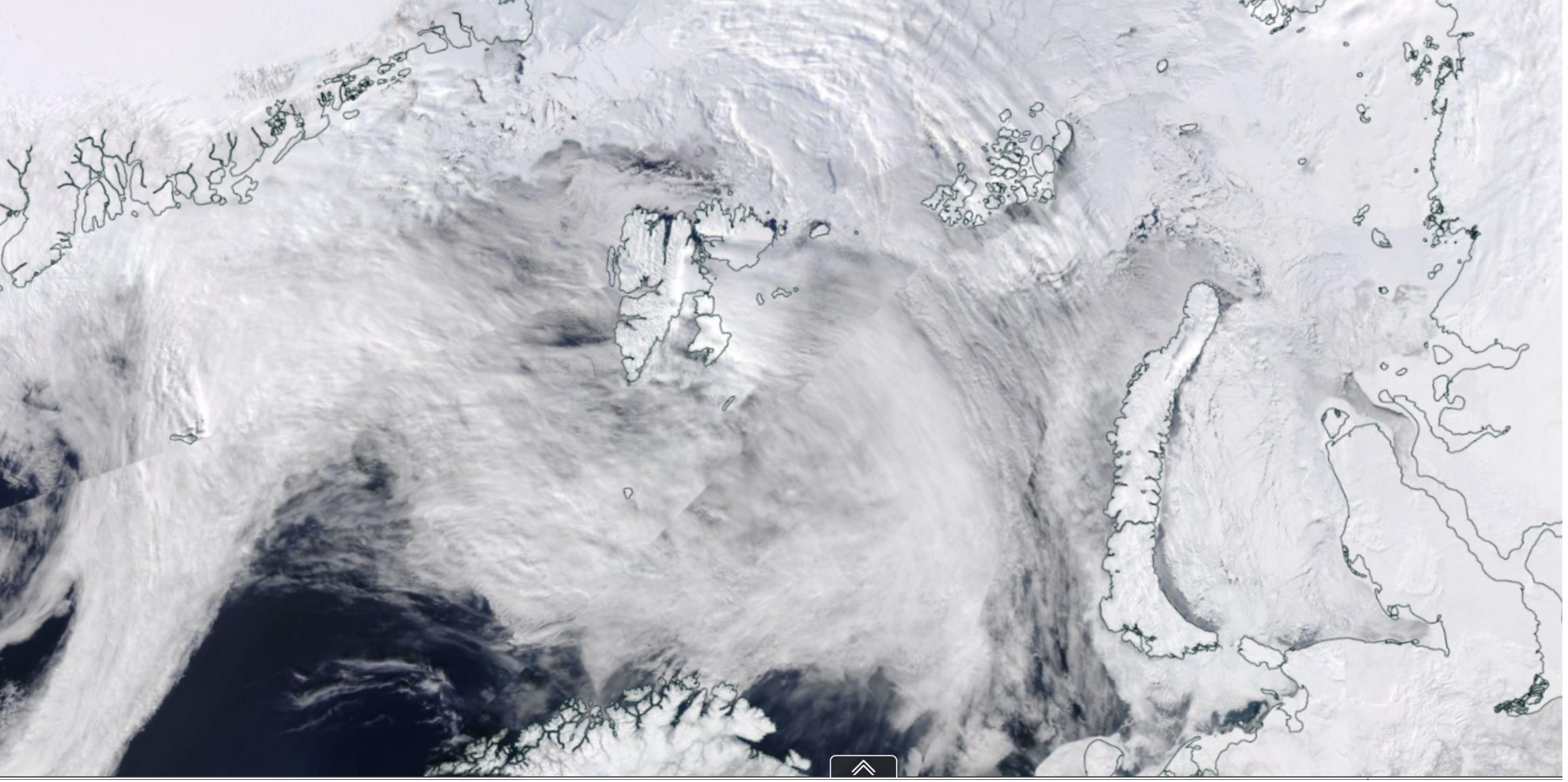
ECMWF kachelmannwetter.com
WETTER HD

Nordpol
ECMWF/Global Euro HD vom 18.04.2021/00Z

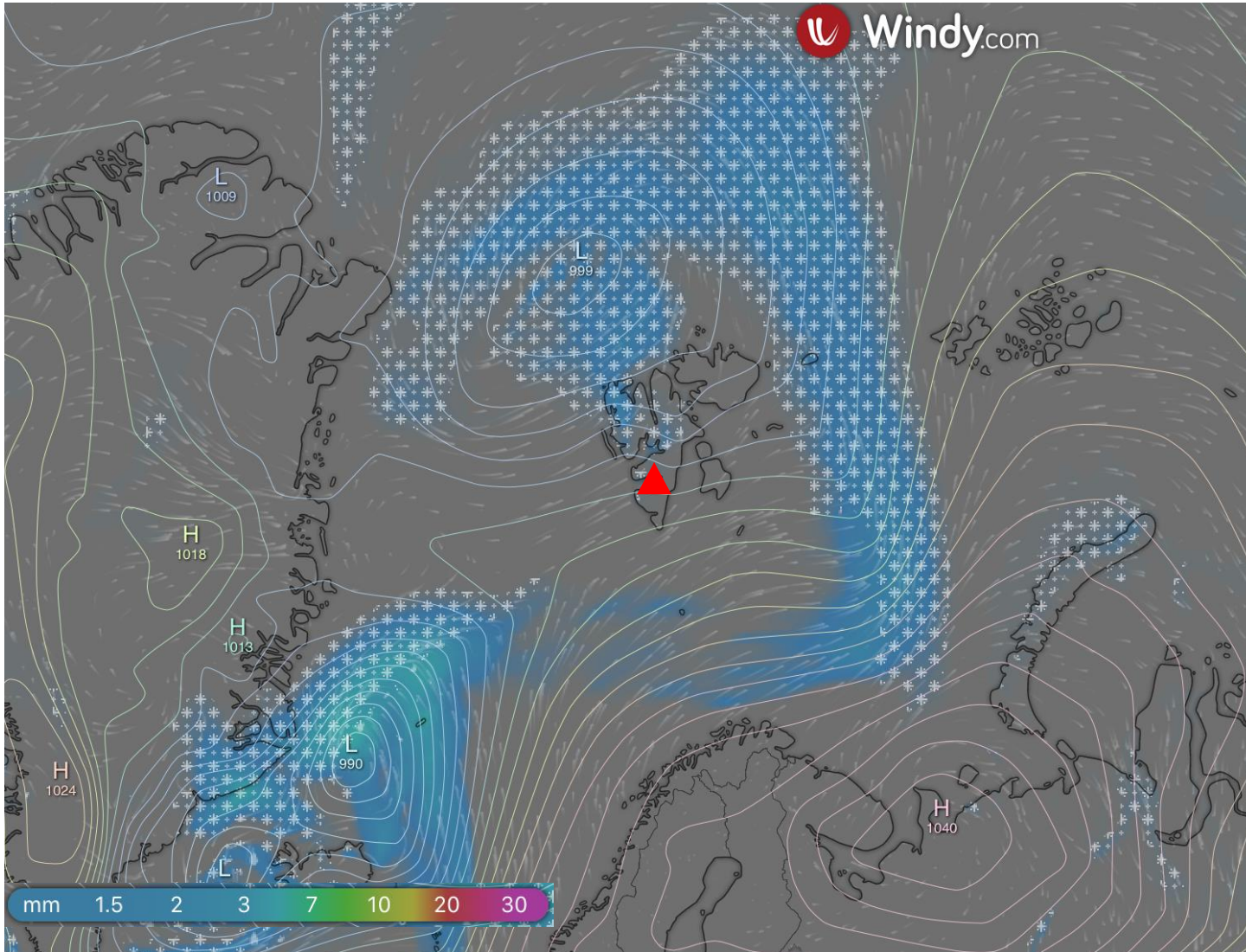
ECMWF kachelmannwetter.com
WETTER HD

- Svalbard covered by low- and high-level clouds
- Almost no clouds above Kiruna

VIIRS (NOAA-20) (18.04.2021)



Windy precipitation (18.04.2021)



Summary

- Not really a cold air outbreak and not really a warm air intrusion.
- Takeoff conditions at Svalbard might be problematic.