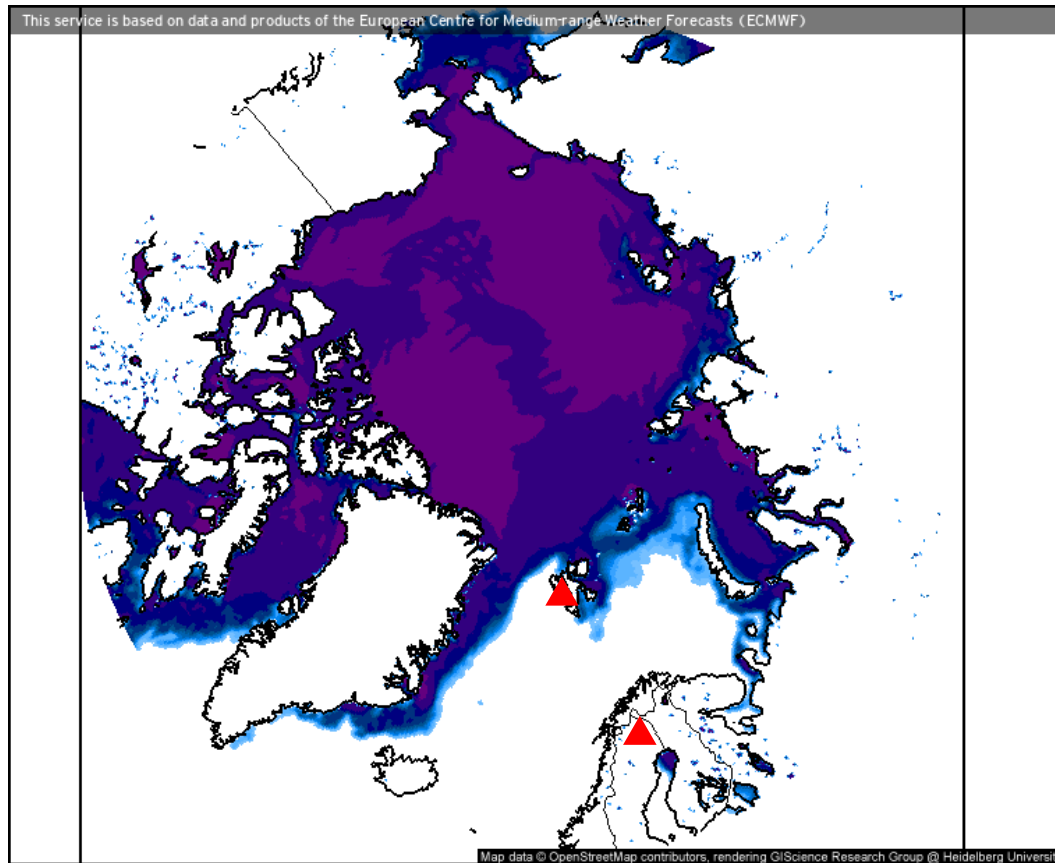


Weather observations

16.04.2021

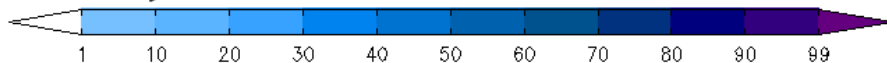
Johannes | Marcus

Sea ice cover (16.04.2021 12 UTC)



- Still pronounced Whaler's Bay polynya
- Small drift ice expansion to the east of Svalbard
- Blob of broken sea ice south of Svalbard is further desintegrating

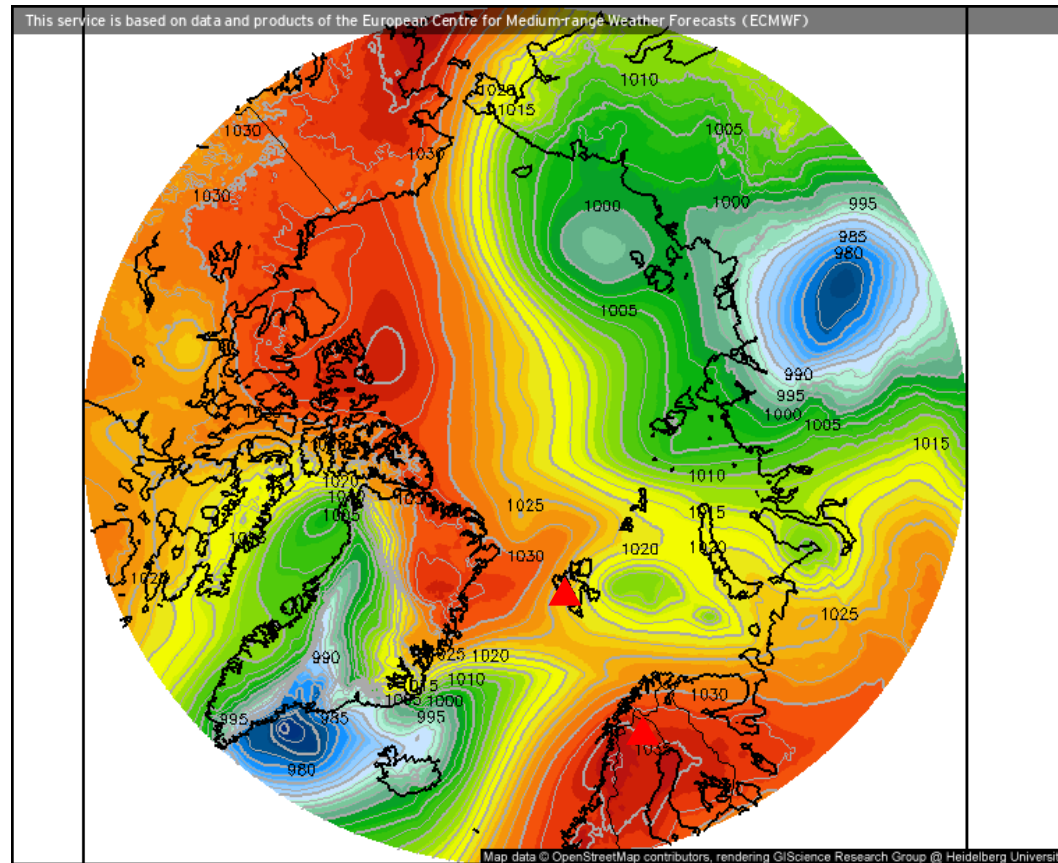
Ice coverage (Sea and lakes) (%)



Valid for
Fri 16-04-2021, 12:00 UTC

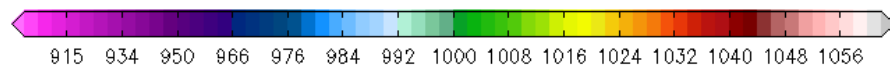
North Pole
ECMWF IFS HRES (10 days) from 16-04-2021/00z

Surface air pressure (16.04.2021 12 UTC)



- Weak Low over Barents Sea
- Strong High over north east Greenland and over Kiruna
- Strong low at the south east corner of Greenland
- Airmasses from the North Atlantic get blocked south of Svalbard and diverted into a westerly flow to Scandinavia

Mean Sea Level Pressure (hPa)

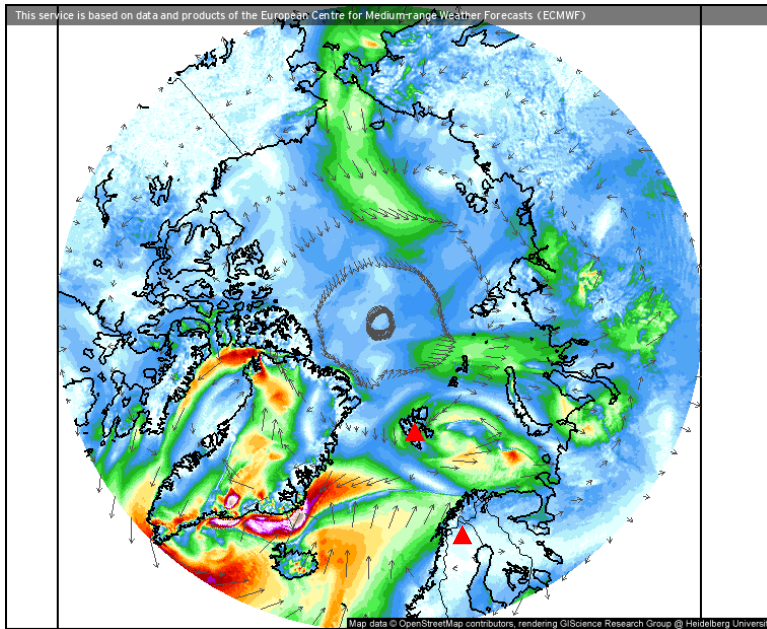


Valid for
Fri 04/16/2021, 12:00pm UTC

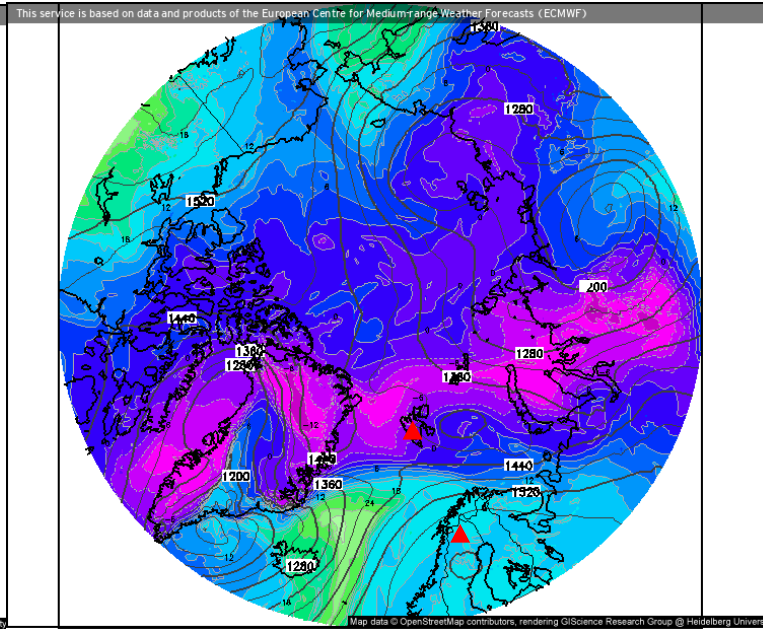
North Pole
ECMWF IFS HRES (10 days) from 04/16/2021/00z

Wind, θ_{eq} , z, IWV (16.04.2021 12 UTC)

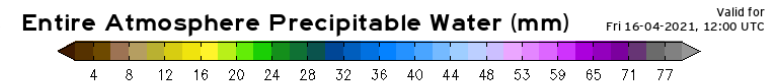
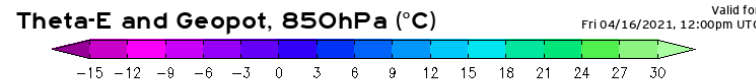
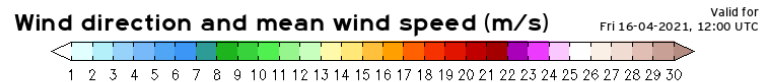
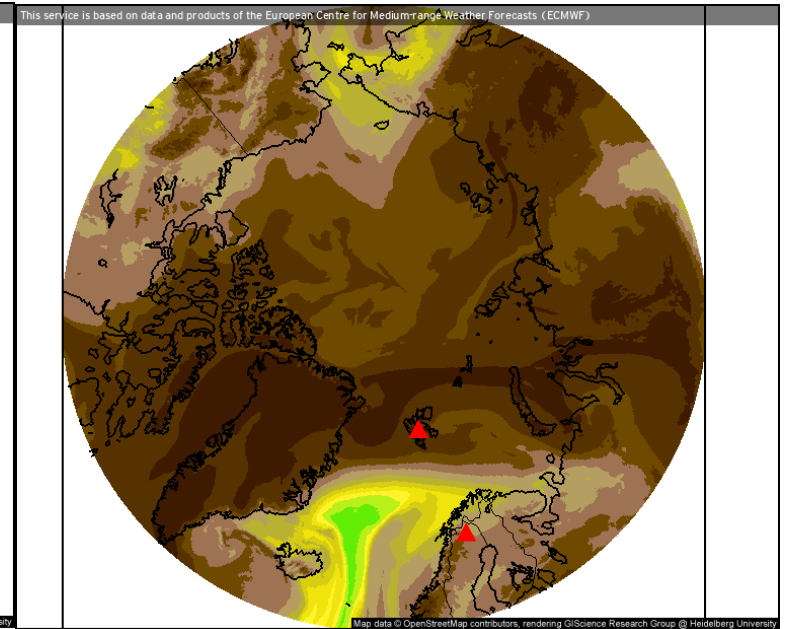
Wind speed and streamlines



Theta-E and geopotential (850 hPa)



Precipitable water



North Pole
ECMWF IFS HRES (10 days) from 16-04-2021/00Z

ECMWF
meteologix.com

North Pole
ECMWF IFS HRES (10 days) from 04/16/2021/00Z

ECMWF
meteologix.com

North Pole
ECMWF IFS HRES (10 days) from 16-04-2021/00Z

ECMWF
meteologix.com

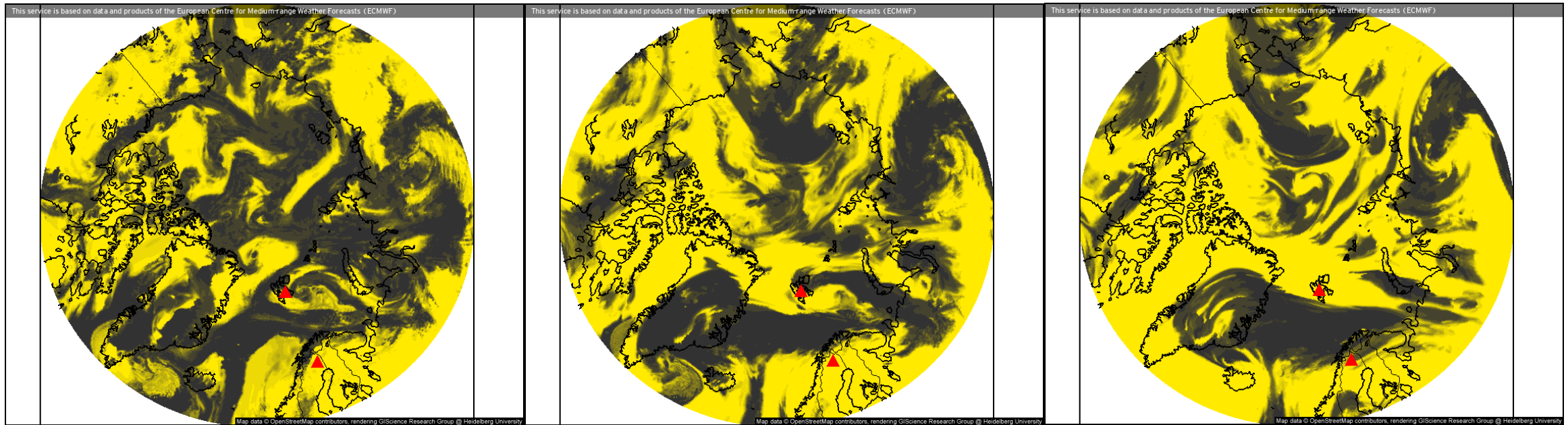
- Weak winds west of Svalbard
- Cold and dry air in the Fram Strait
- Moist and warm air masses north of Iceland

Clouds (16.04.2021 12 UTC)

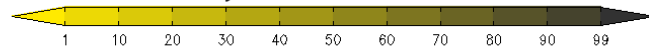
Low-level clouds

Mid-level clouds

High-level clouds

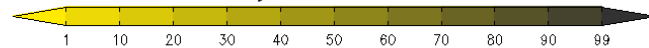


Low clouds, coverage (%)



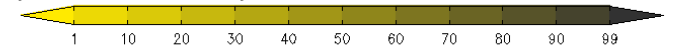
Valid for
Fri 16-04-2021, 12:00 UTC

Middle clouds, coverage (%)



Valid for
Fri 16-04-2021, 12:00 UTC

High clouds, coverage (%)



Valid for
Fri 16-04-2021, 12:00 UTC

North Pole
ECMWF IFS HRES (10 days) from 16-04-2021/00Z

ECMWF [meteologix.com](https://www.meteologix.com)

North Pole
ECMWF IFS HRES (10 days) from 16-04-2021/00Z

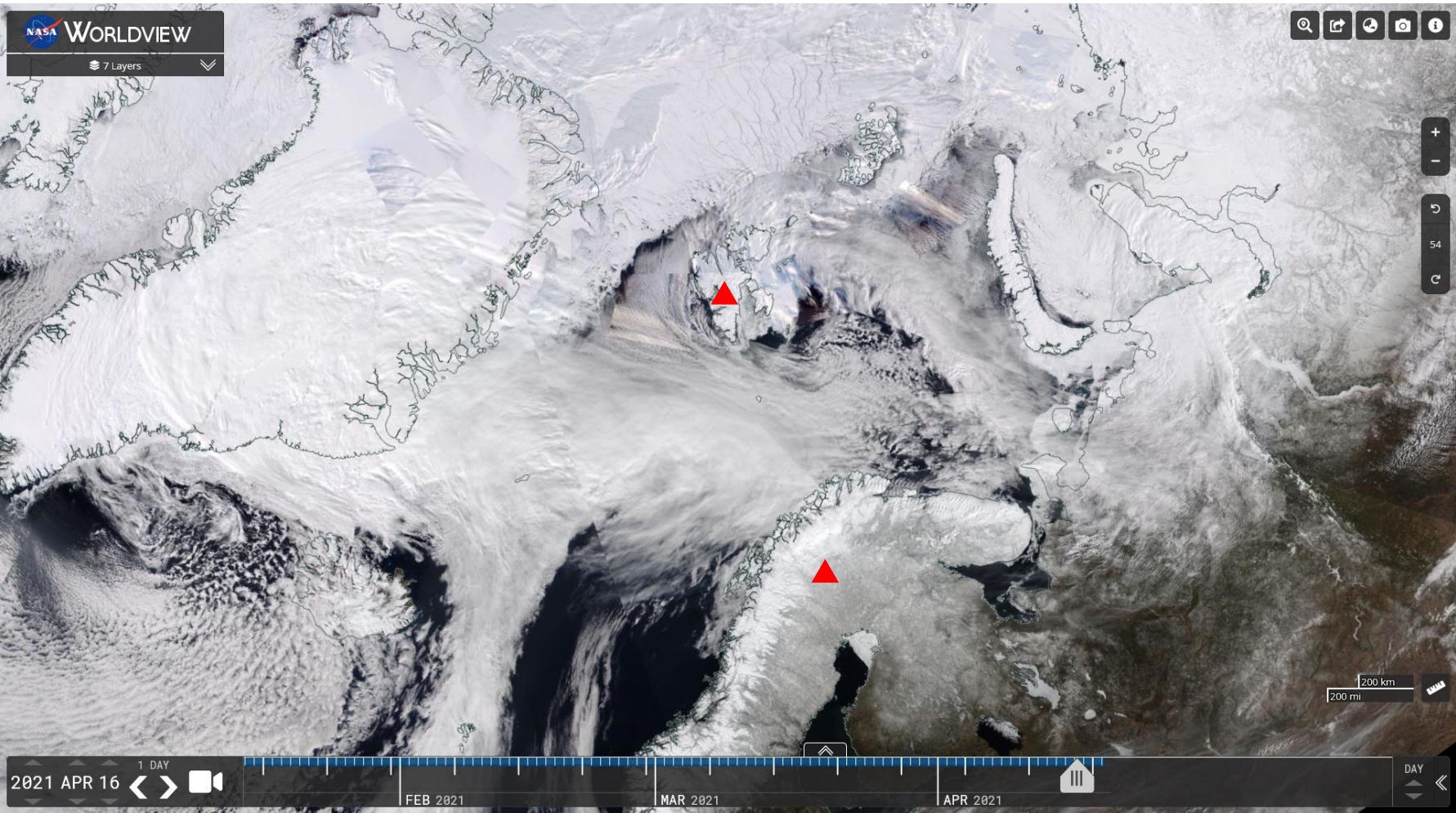
ECMWF [meteologix.com](https://www.meteologix.com)

North Pole
ECMWF IFS HRES (10 days) from 16-04-2021/00Z

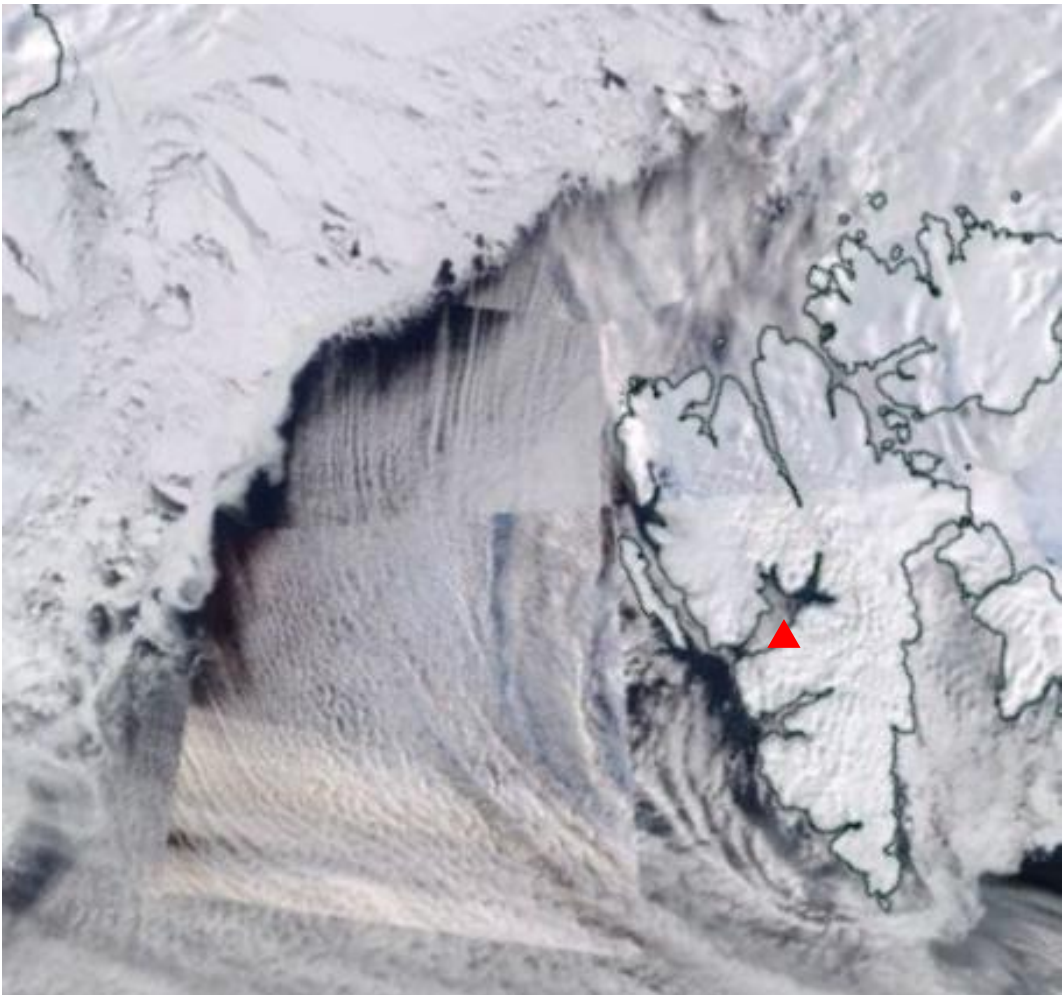
ECMWF [meteologix.com](https://www.meteologix.com)

- Kiruna cloud-free
- Svalbard surrounded by mid and high clouds but only few low clouds above the island

VIIRS (NOAA-20) (16.04.2021)



VIIRS (NOAA-20) (16.04.2021)



Airport situation: Longyearbyen (16.04.2021)



- Extensive low clouds outside of the bay
- Good visibility and cloud base at 2500ft
- Snow showers expected

Svalbard Airport. Longyear

Longyearbyen, Norway

latitude: 78-15N, longitude: 015-28E,
elevation: 2 m

Current weather observation

The report was made **25 minutes ago**, at **11:50 UTC**

Wind **12 kt** from the **North/Northeast**

Temperature **-6°C**

Humidity **68%**

Pressure **1020 hPa**

Visibility **10 km** or more

Few clouds at a height of **2500 ft**
Broken clouds at a height of **4000 ft**

light snow showers

[Change units](#)

METAR: ENSB 161150Z 03012KT 9999
-SHSN FEW025 BKN040 M06/M11 Q1020
NOSIG RMK WIND 1400FT 03010KT

Time: 14:15 (12:15 UTC)

Forecast

Forecast valid from 16 at 12 UTC to 17 at 12 UTC

Wind **9 kt** from the **North/Northwest**

Visibility **10 km** or more

Scattered clouds at a height of **2000 ft**

Temporary
from 16 at 12 UTC to 16 at 15 UTC

Visibility: **4000 m**

light snow showers

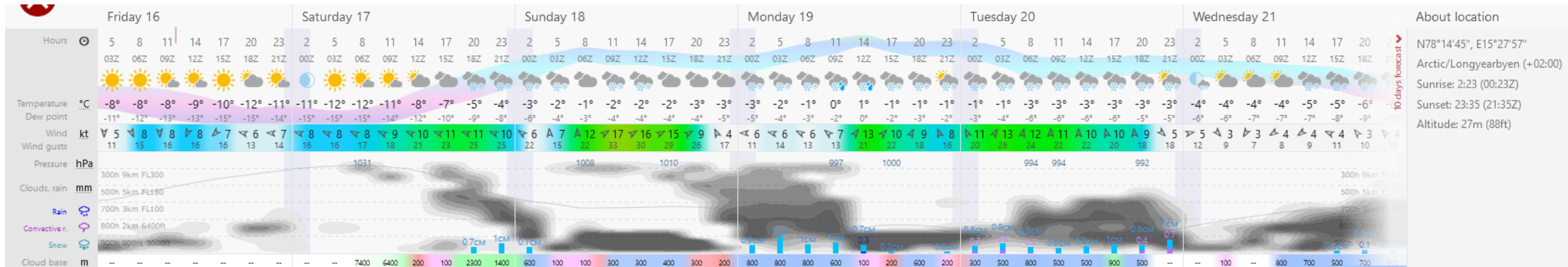
Temporary
from 16 at 13 UTC to 16 at 15 UTC

Wind **12 kt** from the **Northeast**

Becoming
from 16 at 20 UTC to 16 at 22 UTC

Wind **12 kt** from the **South/Southeast**

TAF: ENSB 1612/1712 34009KT 9999
SCT020 TEMPO 1612/1615 4000 -SHSN
TEMPO 1613/1615 05012KT BECMG
1620/1622 15012KT



Airport situation: Kiruna (16.04.2021)

- Good visibility, no clouds
- Perfect flight conditions

Kiruna Airport

Kiruna, Sweden
 latitude: 67-49N, longitude: 020-20E,
 elevation: 452 m

Current weather observation

The report was made **25** minutes ago, at **11:50** UTC

Wind **11** kt from the **West/Southwest**

Temperature **6°C**

Humidity **61%**

Pressure **1033** hPa

Visibility **10** km or more

[Change units](#)

METAR: ESNQ 161150Z AUTO 25011KT
 9999 FEW200/// 06/M01 Q1033

Time: 14:15 (12:15 UTC)

Forecast

The report was made **45** minutes ago, at **11:30** UTC

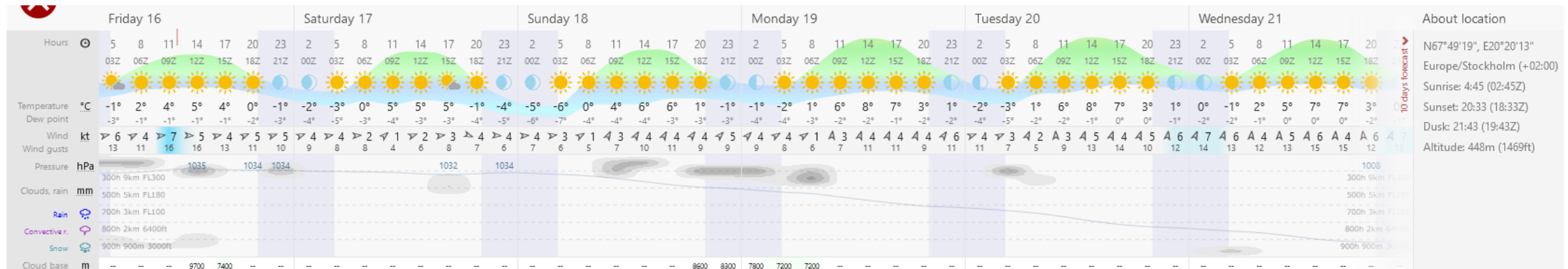
Forecast valid from 16 at 12 UTC to 16 at 19 UTC

Wind **8** kt from the **West/Southwest**

Visibility **10** km or more

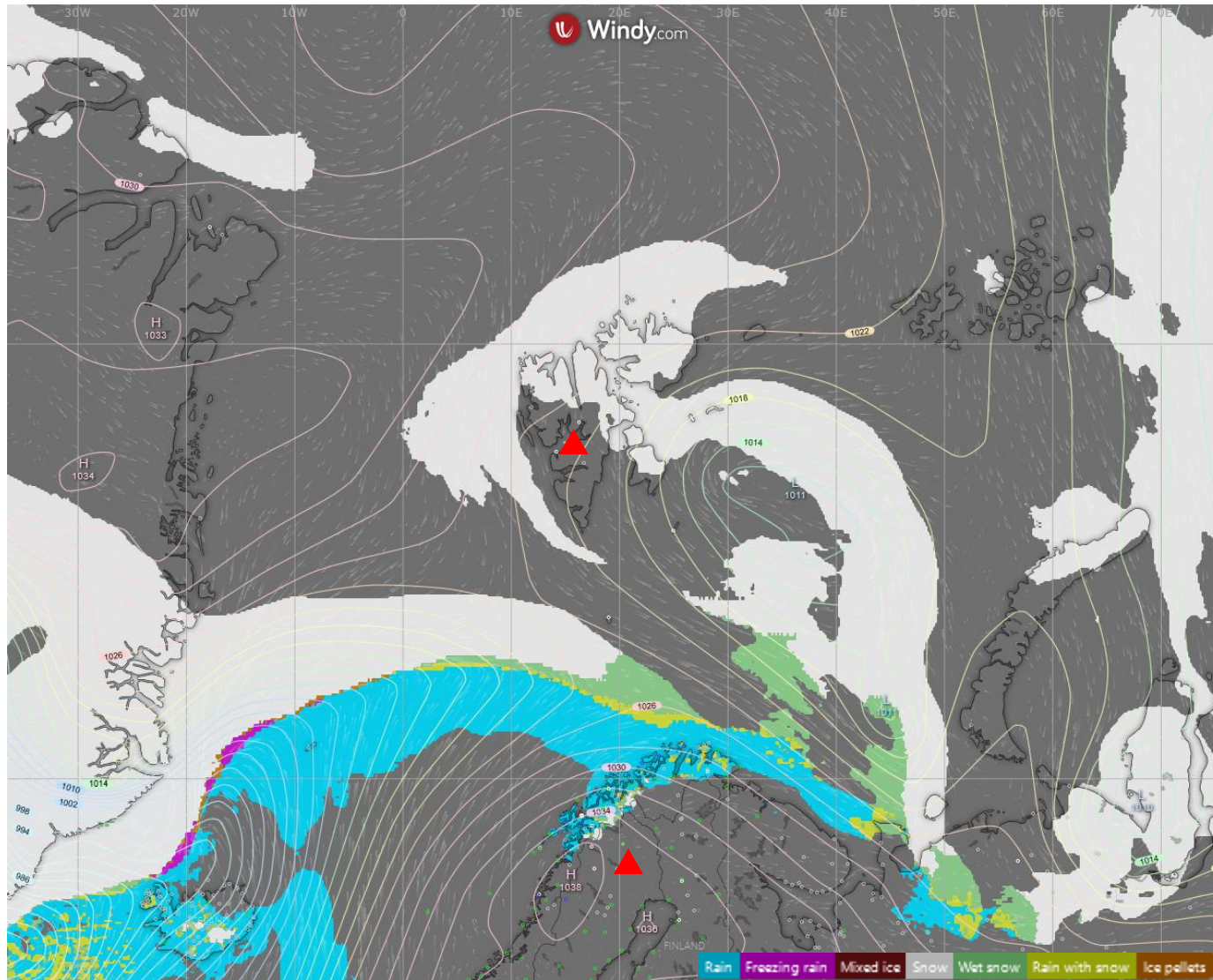
no clouds below 1500 m and no cumulonimbus

TAF: ESNQ 161130Z 1612/1619 24008KT
 CAVOK



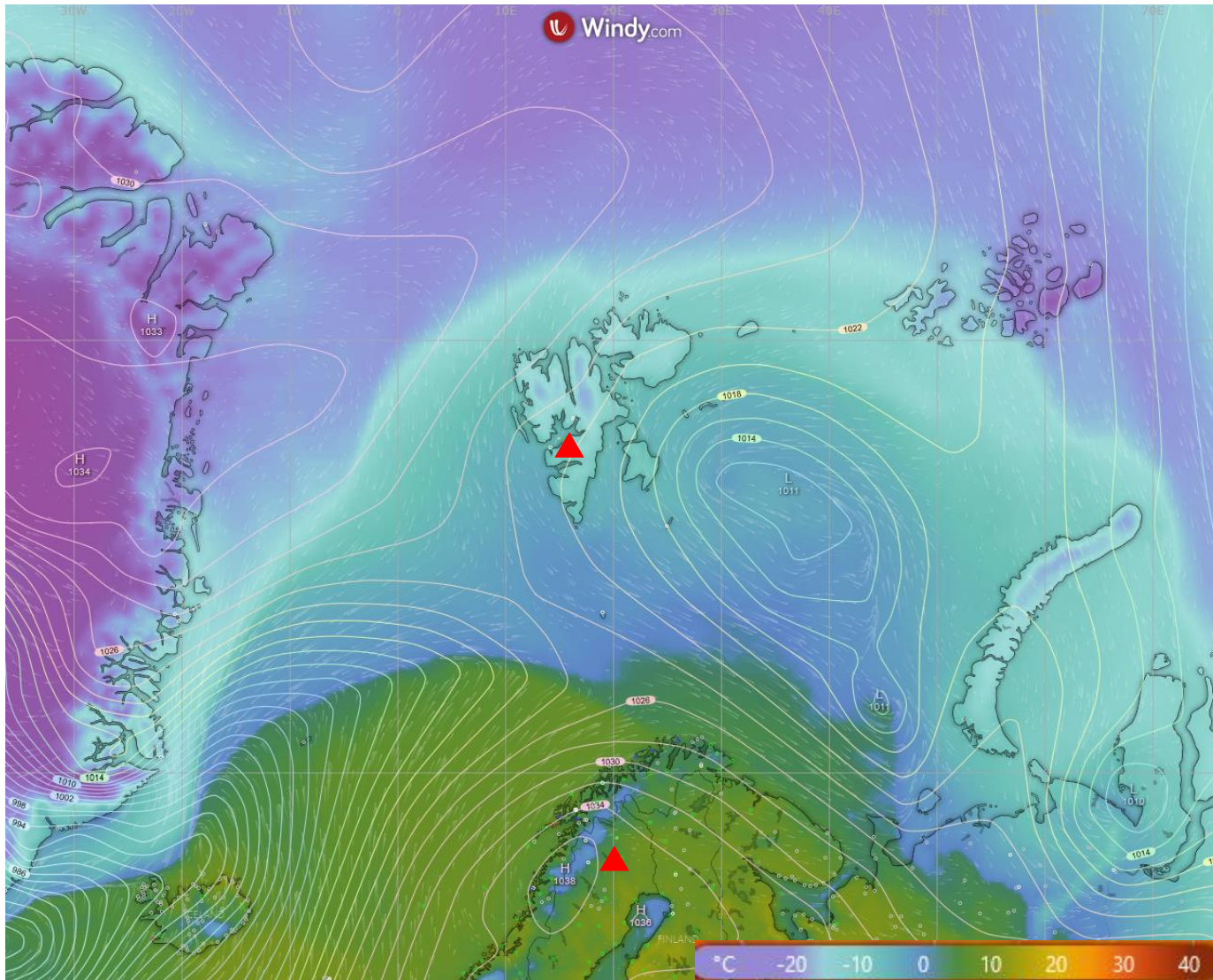
About location
 N67°49'19", E20°20'13"
 Europe/Stockholm (+02:00)
 Sunrise: 4:45 (02:45Z)
 Sunset: 20:33 (18:33Z)
 Dusk: 21:43 (19:43Z)
 Altitude: 448m (1469ft)

Windy precipitation type (16.04.2021 12 UTC)



- Snow fall all around Svalbard with some rain to the north of Norway

Windy surface temperature/pressure (16.04.2021 12 UTC)



Summary

- The Low east of Svalbard and the High over north east Greenland move cold and dry air masses from the Arctic Ocean towards Svalbard, and blocking southerly airmasses from the North Atlantic
- The High over Kiruna diverts the southerly air masses along the Norwegian coast into the Barents sea and onto the Russian mainland
- Along the air mass border rainfall can be observed