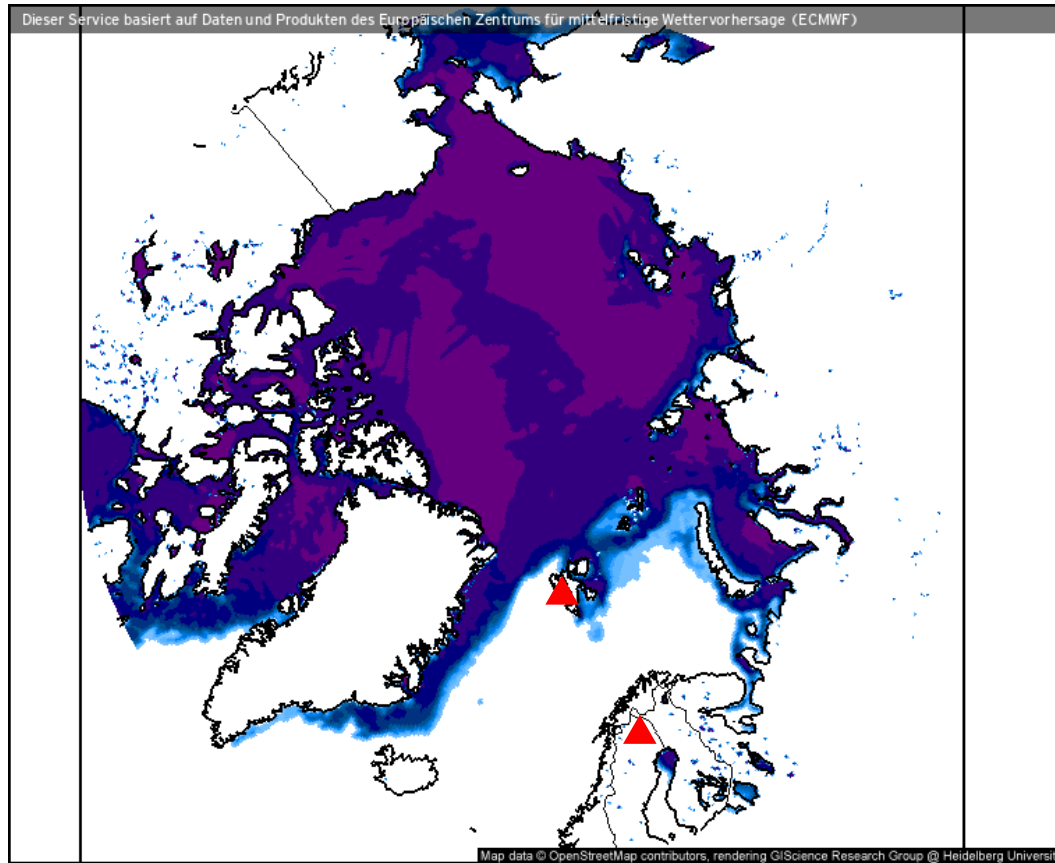


Weather observations

14.04.2021

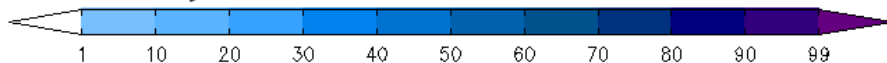
Johannes | Marcus

Sea ice cover (14.04.2021 12 UTC)



- Still pronounced Whaler's Bay polynya
- Small drift ice expansion to the east of Svalbard
- Blob of broken sea ice south of Svalbard

Eisbedeckung (Meere und Seen) (%)

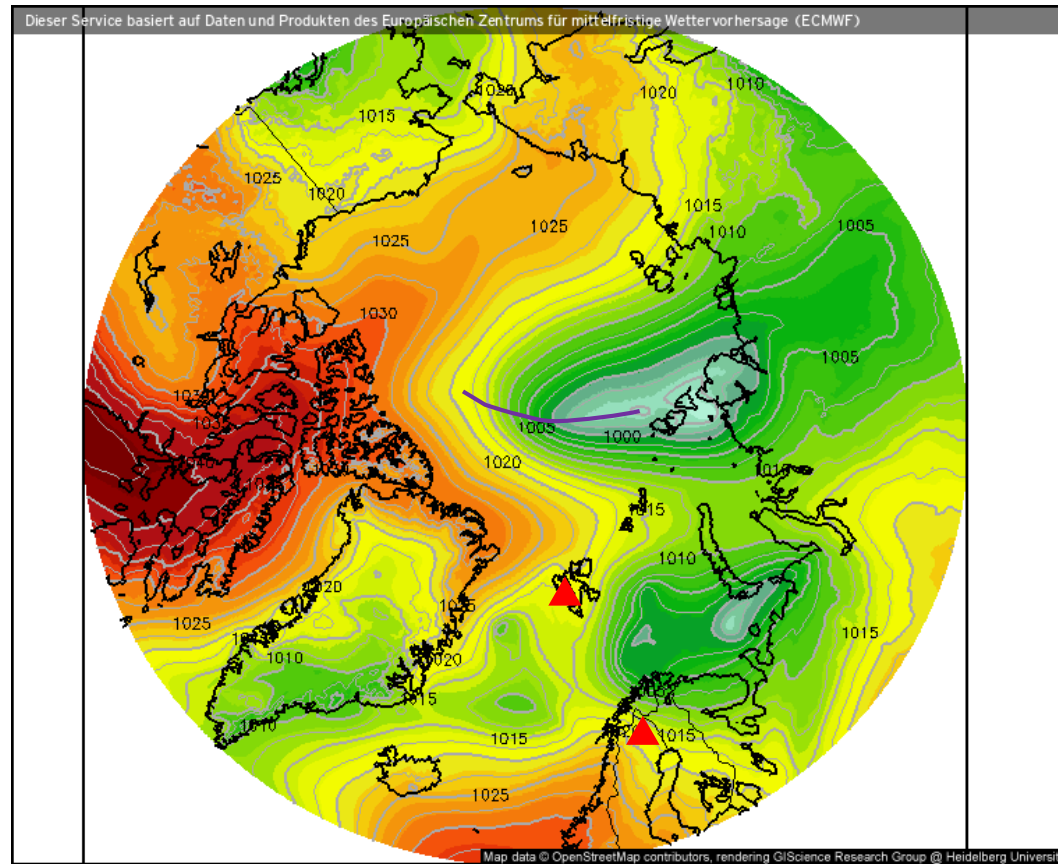


Prognose für

Mi. 14.04.2021, 14:00 Uhr MESZ

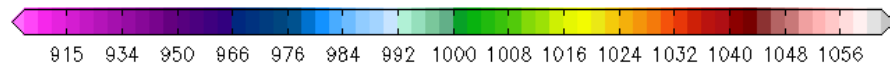
Nordpol
ECMWF/Global Euro HD vom 14.04.2021/00Z

Surface air pressure (14.04.2021 12 UTC)



- Low over the Kara Sea weekend and moved west over Severnaya Zemlya
- High east of Iceland moved south west and gave way to the low from north east Greenland which is still weak

Luftdruck auf Meereshöhe (hPa)



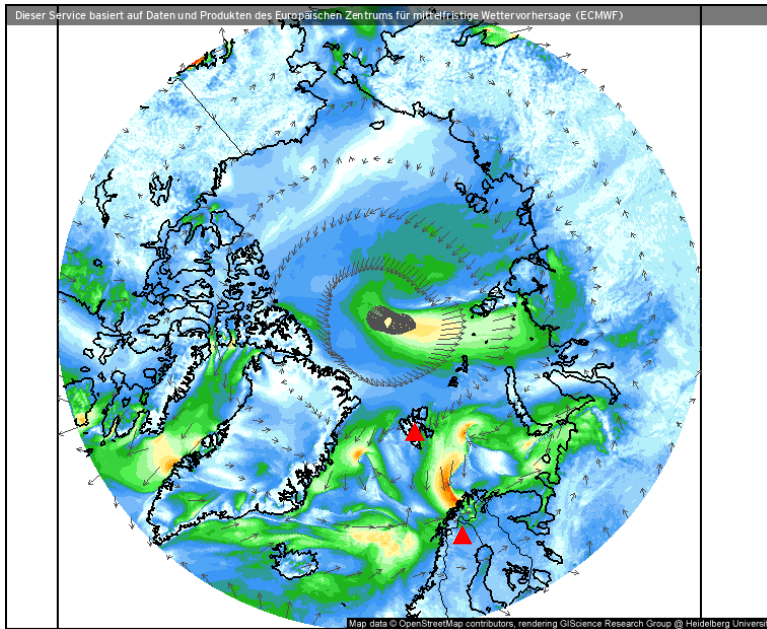
Prognose für

Mi. 14.04.2021, 14:00 Uhr MESZ

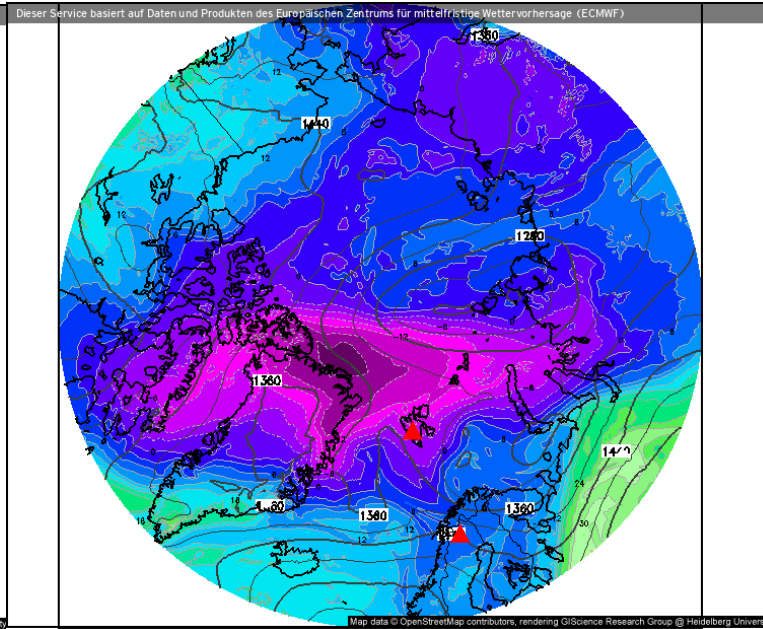
Nordpol
ECMWF/Global Euro HD vom 14.04.2021/00Z

Wind, θ_{eq} , z, IWV (14.04.2021 12 UTC)

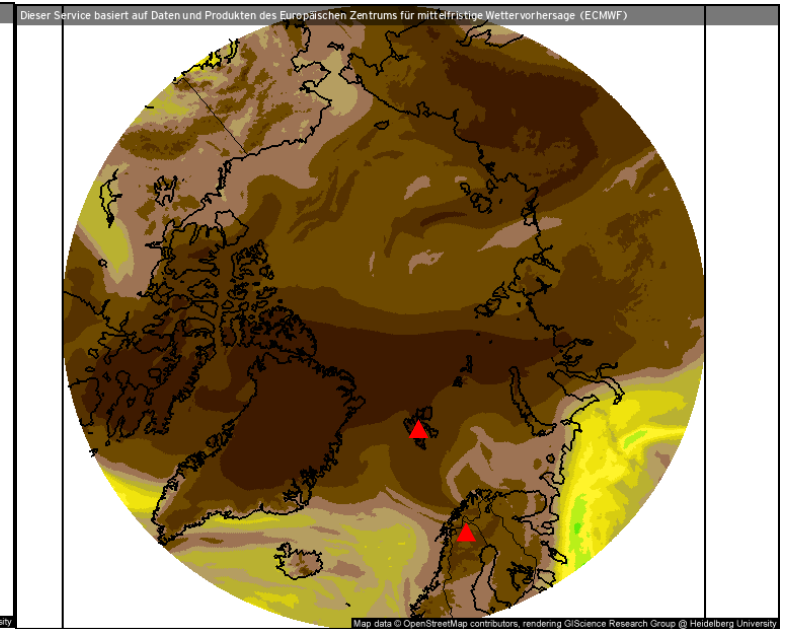
Wind speed and streamlines



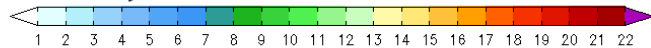
Theta-E and geopotential (850 hPa)



Precipitable water

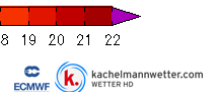


Windrichtung und Windmittel (m/s)



Nordpol
ECMWF/Global Euro HD vom 14.04.2021/00z

Prognose für
Mi. 14.04.2021, 14:00 Uhr MESZ

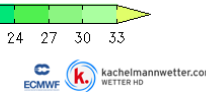


Theta-E und Geopot, 850hPa (°C)

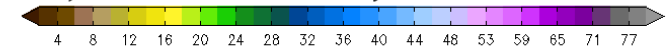


Nordpol
ECMWF/Global Euro HD vom 14.04.2021/00z

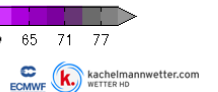
Prognose für
Mi. 14.04.2021, 14:00 Uhr MESZ



Atmosphärisches Niederschlagswasser (mm)



Nordpol
ECMWF/Global Euro HD vom 14.04.2021/00z



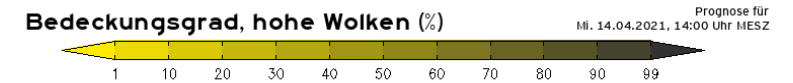
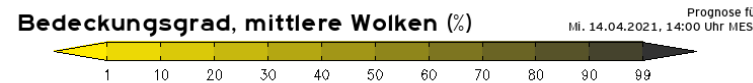
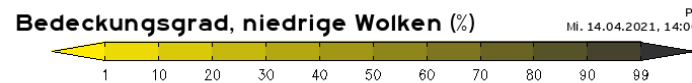
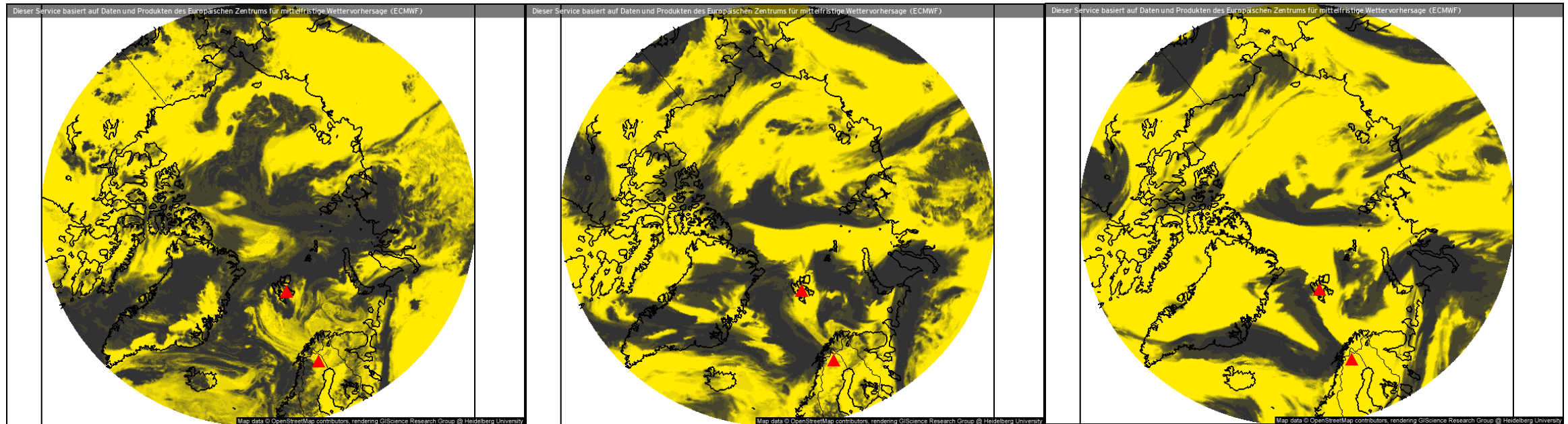
- CAO west and east of Svalbard but there is a zone of calm weather south of the island
- Some moisture gets advected over the Barents Sea
- Westerly winds west of Kiruna

Clouds (14.04.2021 12 UTC)

Low-level clouds

Mid-level clouds

High-level clouds



Nordpol
ECMWF/Global Euro HD vom 14.04.2021/00z

ECMWF kachelmannwetter.com
WETTER HD

Nordpol
ECMWF/Global Euro HD vom 14.04.2021/00z

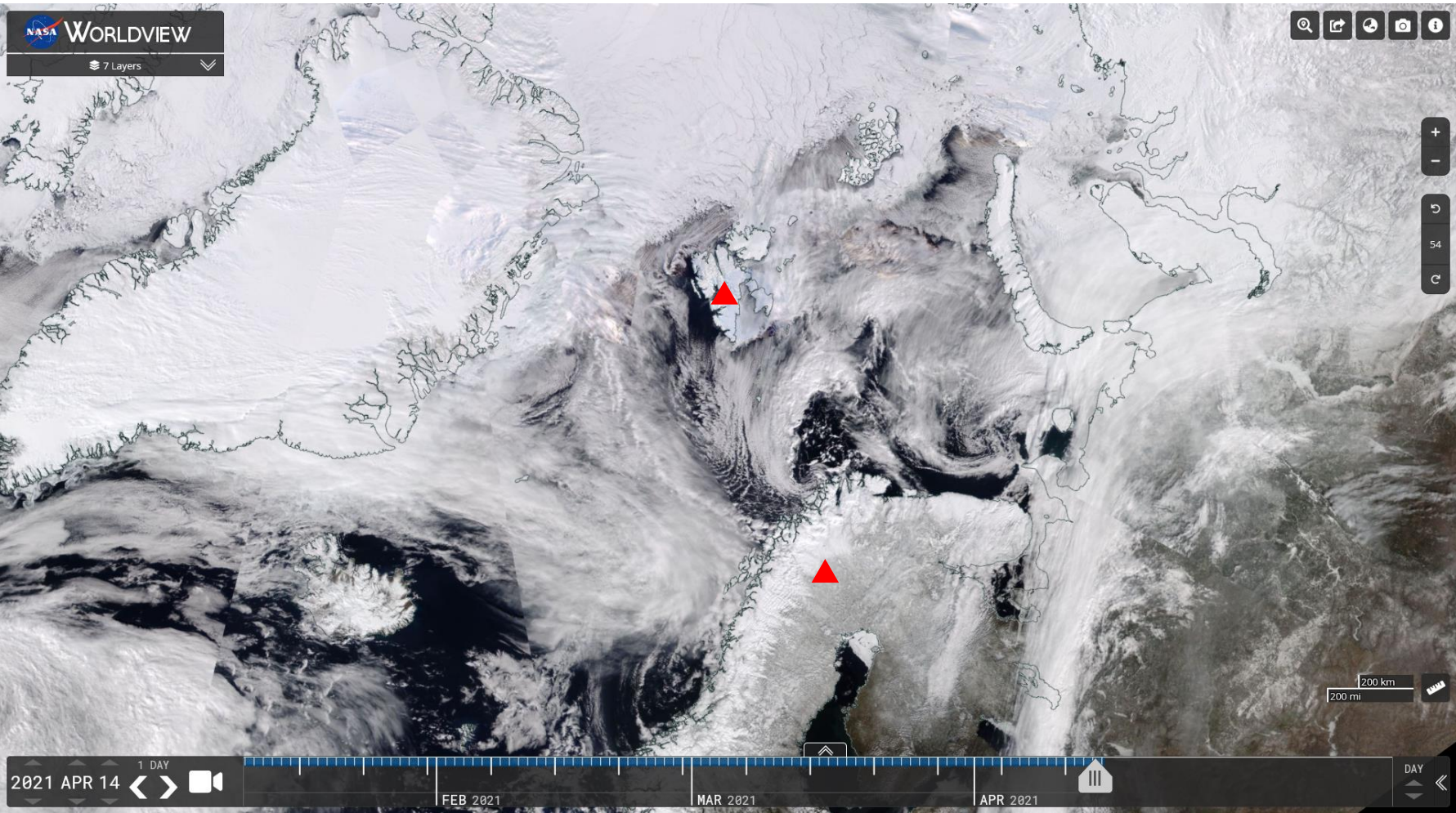
ECMWF kachelmannwetter.com
WETTER HD

Nordpol
ECMWF/Global Euro HD vom 14.04.2021/00z

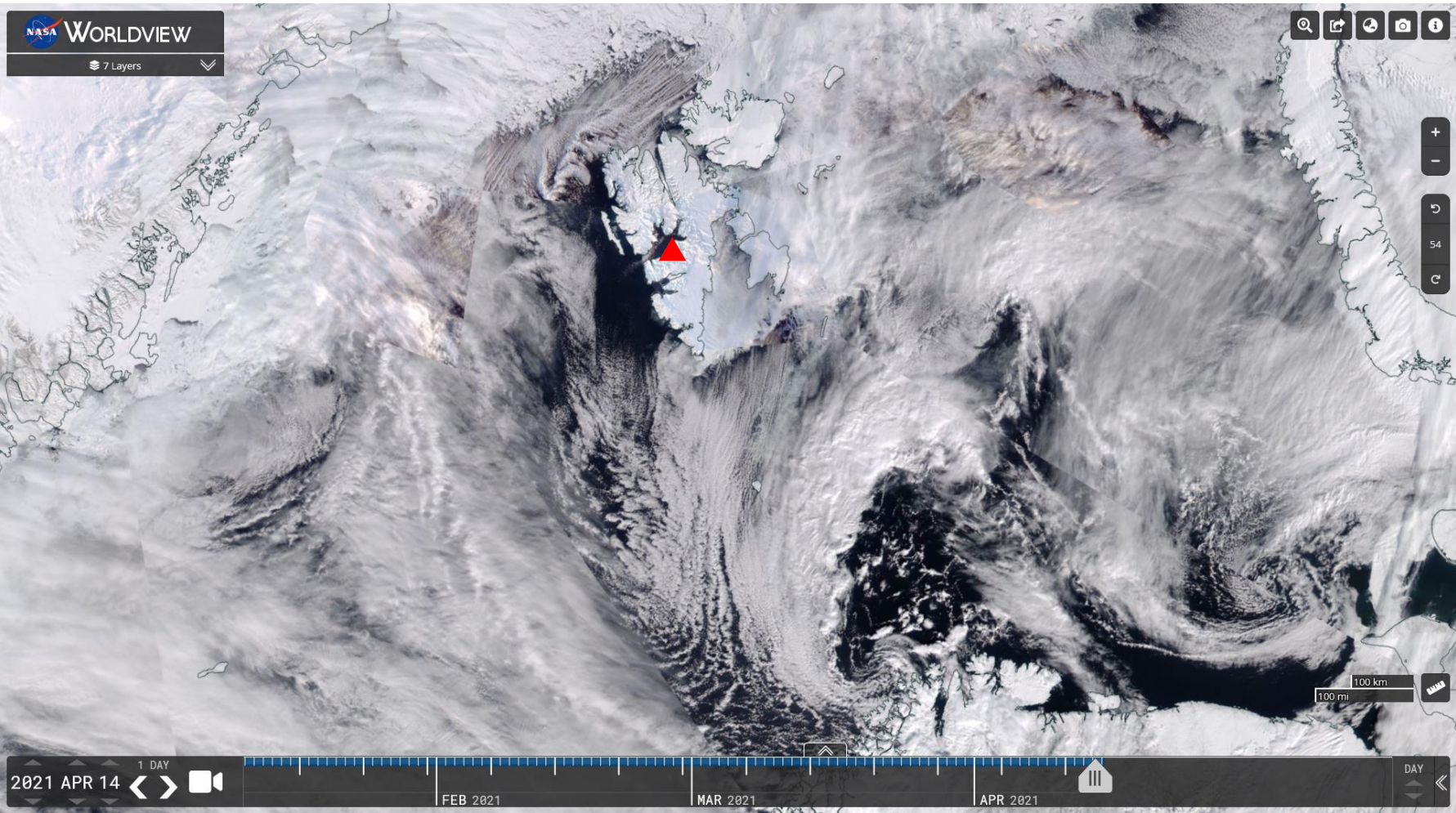
ECMWF kachelmannwetter.com
WETTER HD

- Kiruna cloud-free
- Svalbard surrounded by mid and high clouds but some scattered low clouds

VIIRS (NOAA-20) (14.04.2021)



VIIRS (NOAA-20) (14.04.2021)



Airport situation: Longyearbyen (14.04.2021)



- Perfect visibility
- Some low clouds
- Suitable for flight

Svalbard Airport. Longyear

Longyearbyen, Norway

latitude: 78-15N, longitude: 015-28E,
elevation: 2 m

Current weather observation

The report was made **28** minutes ago, at **12:50** UTC

Wind **8** kt from the **East/Southeast**

Temperature **-13°C**

Humidity **56%**

Pressure **1017** hPa

Visibility **10** km or more

Few clouds at a height of **2500** ft

[Change units](#)

Time: 15:18 (13:18 UTC)

Forecast

Forecast valid from 14 at 12 UTC to 15 at 12 UTC

Wind **9** kt from the **Southeast**

Visibility **10** km or more

Few clouds at a height of **3000** ft

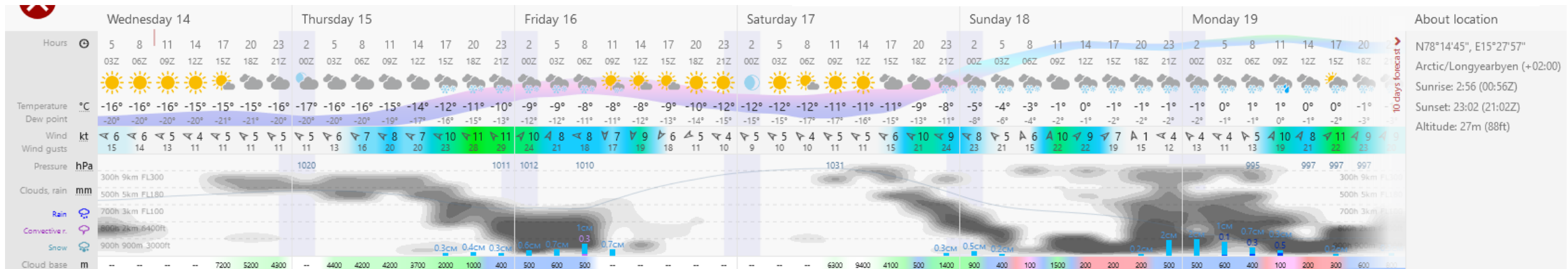
Temporary
from 15 at 09 UTC to 15 at 12 UTC

Wind **19** kt from the **Southeast**

Low drifting snow

TAF: ENSB 1412/1512 14009KT 9999
FEW030 TEMPO 1509/1512 14019KT DRSN

METAR: ENSB 141250Z 12008KT 9999
FEW025 M13/M20 Q1017 RMK WIND
1400FT 11010KT



About location
N78°14'45", E15°27'57"
Arctic/Longyearbyen (+02:00)
Sunrise: 2:56 (00:56Z)
Sunset: 23:02 (21:02Z)
Altitude: 27m (88ft)

Airport situation: Kiruna (14.04.2021)

- Good visibility, almost no clouds
- Perfect flight conditions

Kiruna Airport

Kiruna, Sweden
 latitude: 67-49N, longitude: 020-20E,
 elevation: 452 m

Current weather observation

The report was made **29** minutes ago, at **12:50** UTC

Wind **12 kt** from the **West/Northwest**

Temperature **1°C**

Humidity **55%**

Pressure **1015 hPa**

Visibility **10 km** or more

no clouds below 1500 m and no cumulonimbus

[Change units](#)

METAR: ESNQ 141250Z 30012KT CAVOK
01/M07 Q1015

Time: 15:19 (13:19 UTC)

Forecast

The report was made **1** hour and **49** minutes ago, at **11:30** UTC

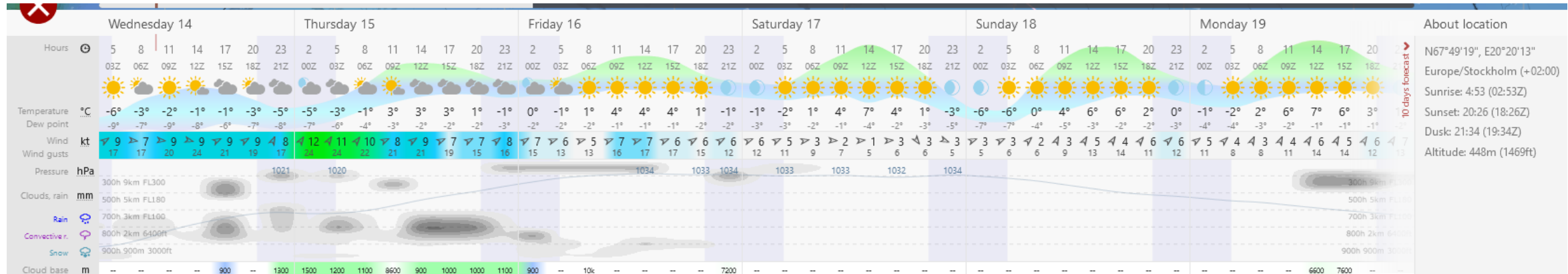
Forecast valid from 14 at 12 UTC to 14 at 17 UTC

Wind **15 kt** from the **West/Northwest** with gusts up to **25 kt**

Visibility **10 km** or more

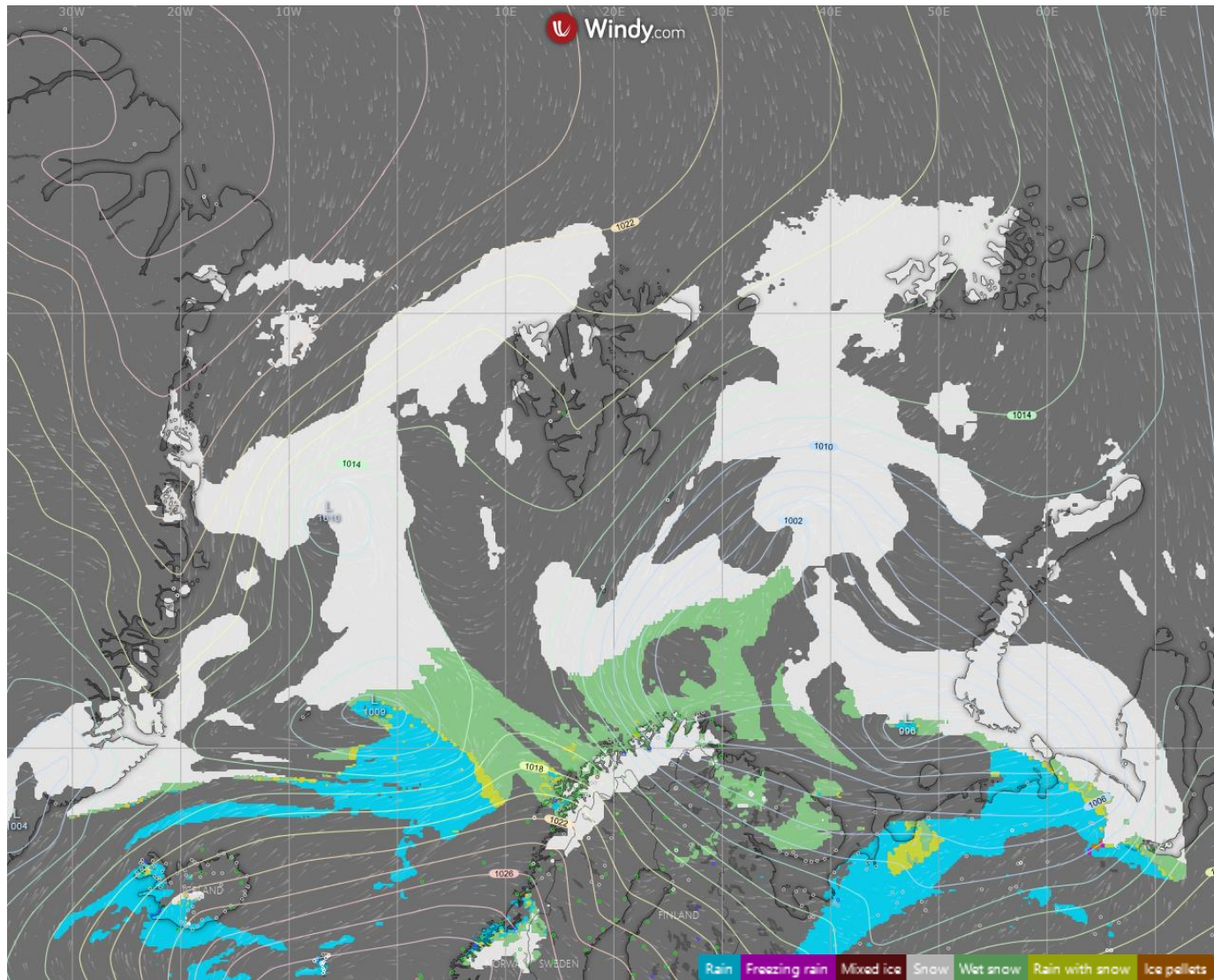
Scattered clouds at a height of **4000 ft**

TAF: ESNQ 141130Z 1412/1417
30015G25KT 9999 SCT040



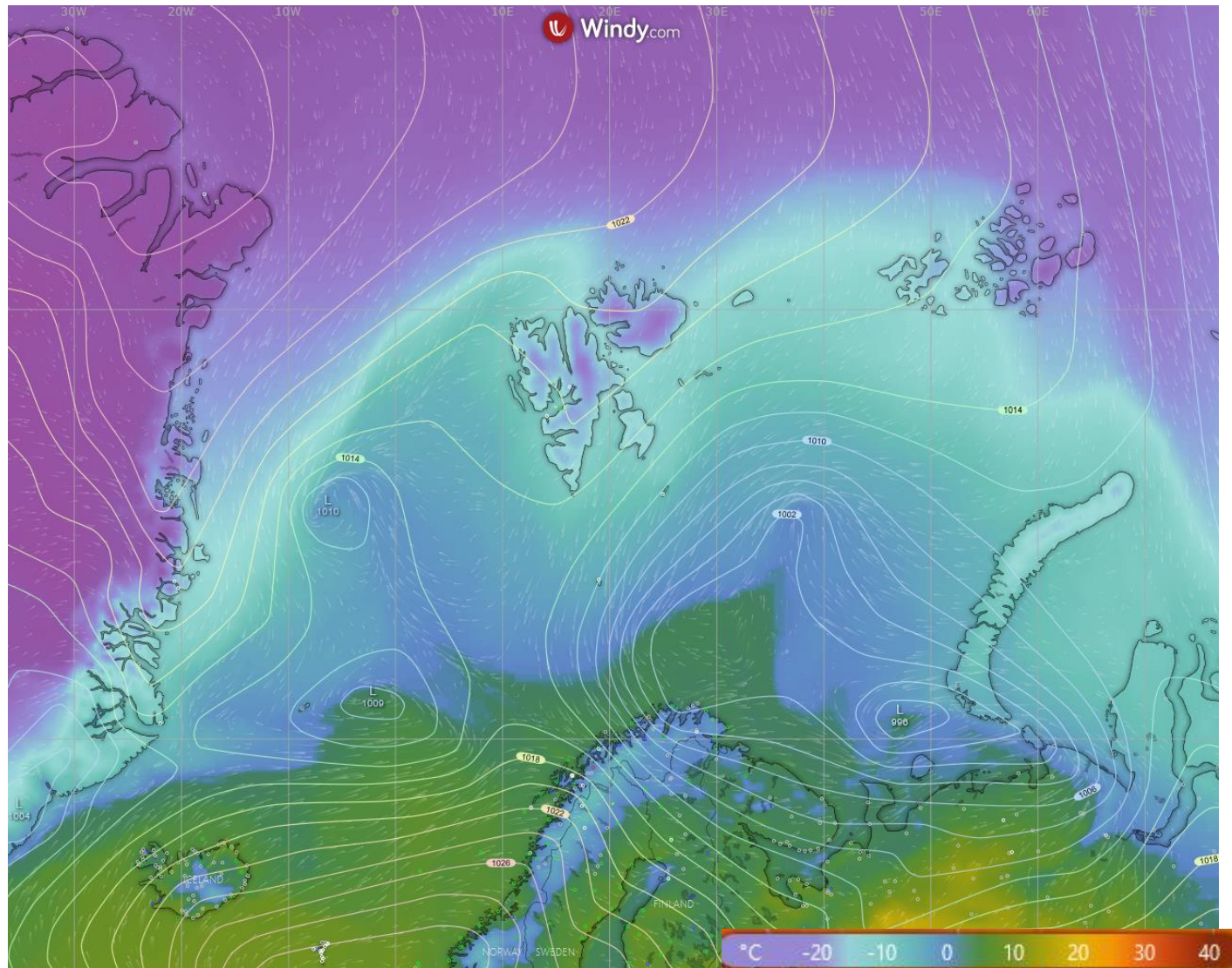
About location
 N67°49'19", E20°20'13"
 Europe/Stockholm (+02:00)
 Sunrise: 4:53 (02:53Z)
 Sunset: 20:26 (18:26Z)
 Dusk: 21:34 (19:34Z)
 Altitude: 448m (1469ft)

Windy precipitation type (14.04.2021 12 UTC)



- Snow fall all around Svalbard with some rain to the north of Norway

Windy surface temperature/pressure (14.04.2021 12 UTC)



Summary

- CAO west and east of Svalbard
- Low pressure systems to the south east and south west of Svalbard lead to an flow off the ice and subsequent formation of cloud streets east and west of Svalbard
- Between the two/three systems a area of mild winds south west of Svalbard forms which allows for good flight conditions for the Polar aircraft
- Good visibility at both airports -> flight day
- Possible investigation of easterly, westerly or southerly cloud streets