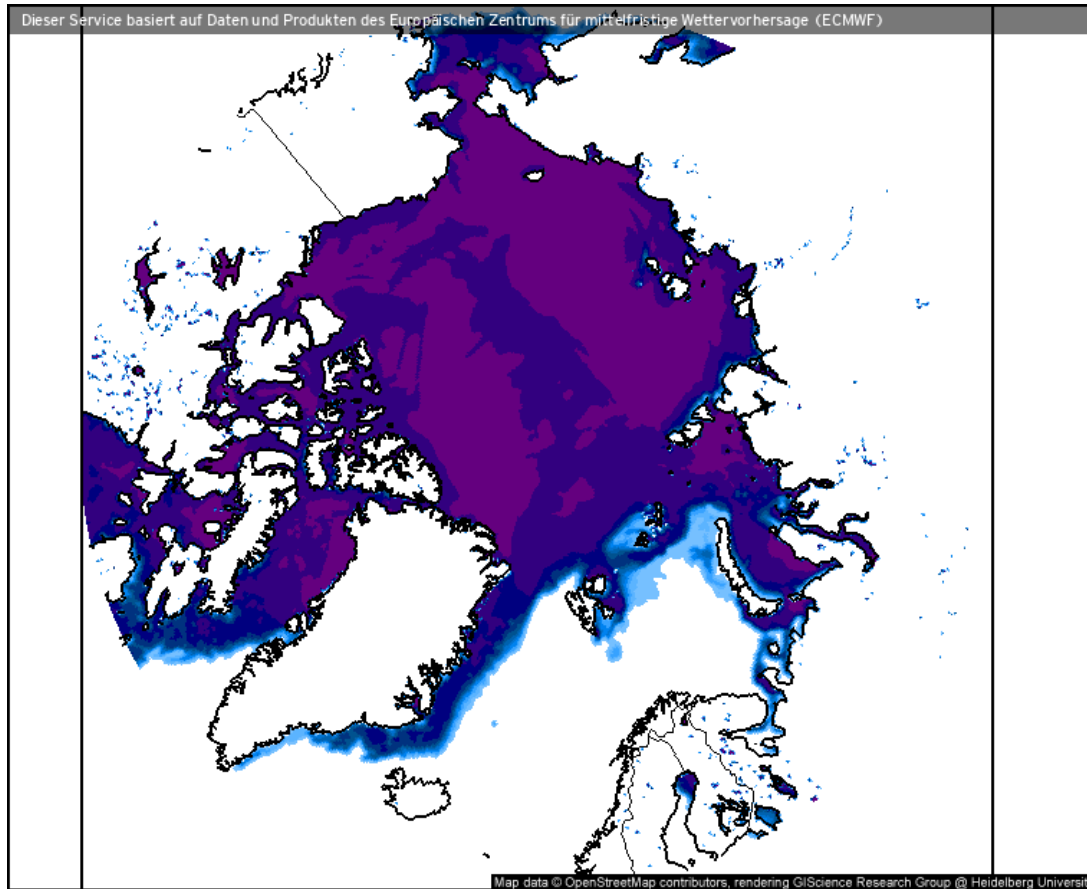


# Weather observations

## 13.04.2021

Marcus | Johannes

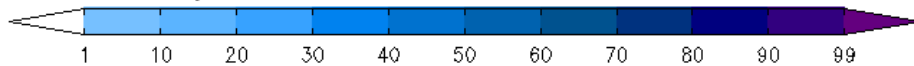
# Sea ice cover (13.04.2021 12 UTC)



- Still pronounced Whaler's Bay polynia
- Increasing ice east of Svalbard

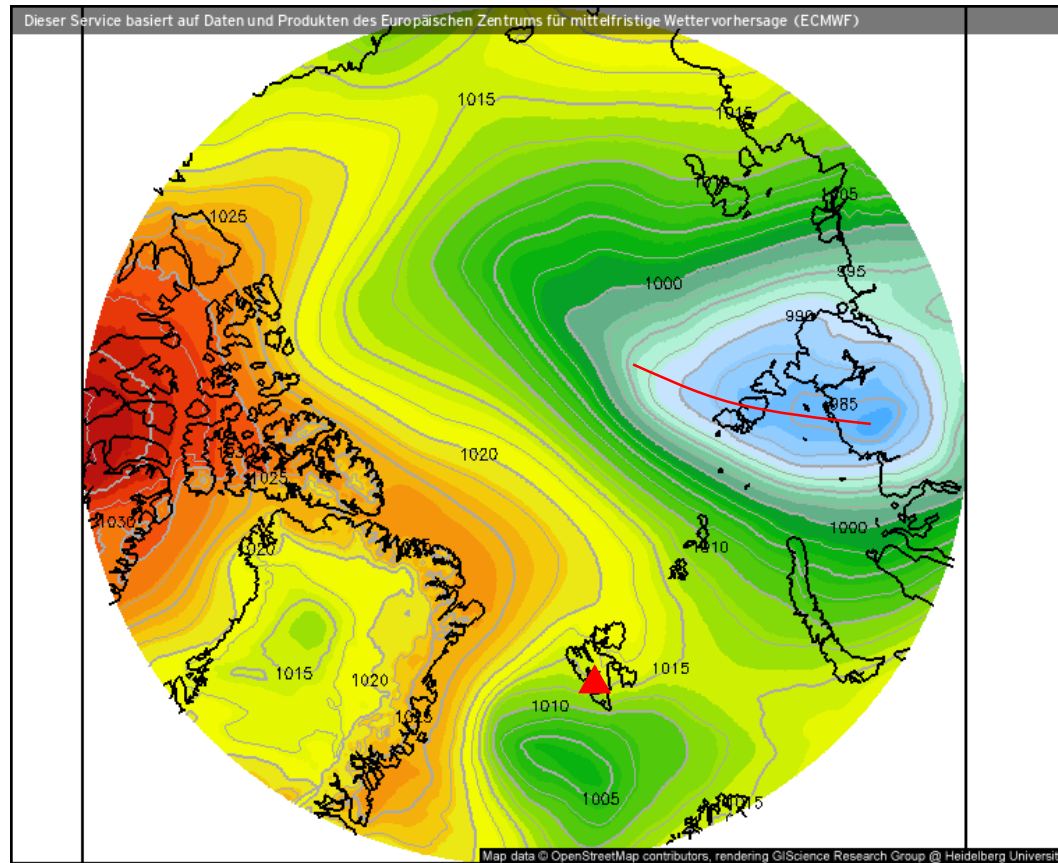
Eisbedeckung (Meere und Seen) (%)

Prognose für  
Di. 13.04.2021, 14:00 Uhr MESZ



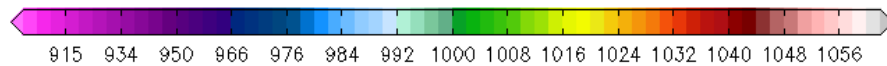
Nordpol  
ECMWF/Global Euro HD vom 13.04.2021/00Z

# Surface air pressure (13.04.2021 12 UTC)



- North of Svalbard is influenced by two low pressure systems

Luftdruck auf Meereshöhe (hPa)

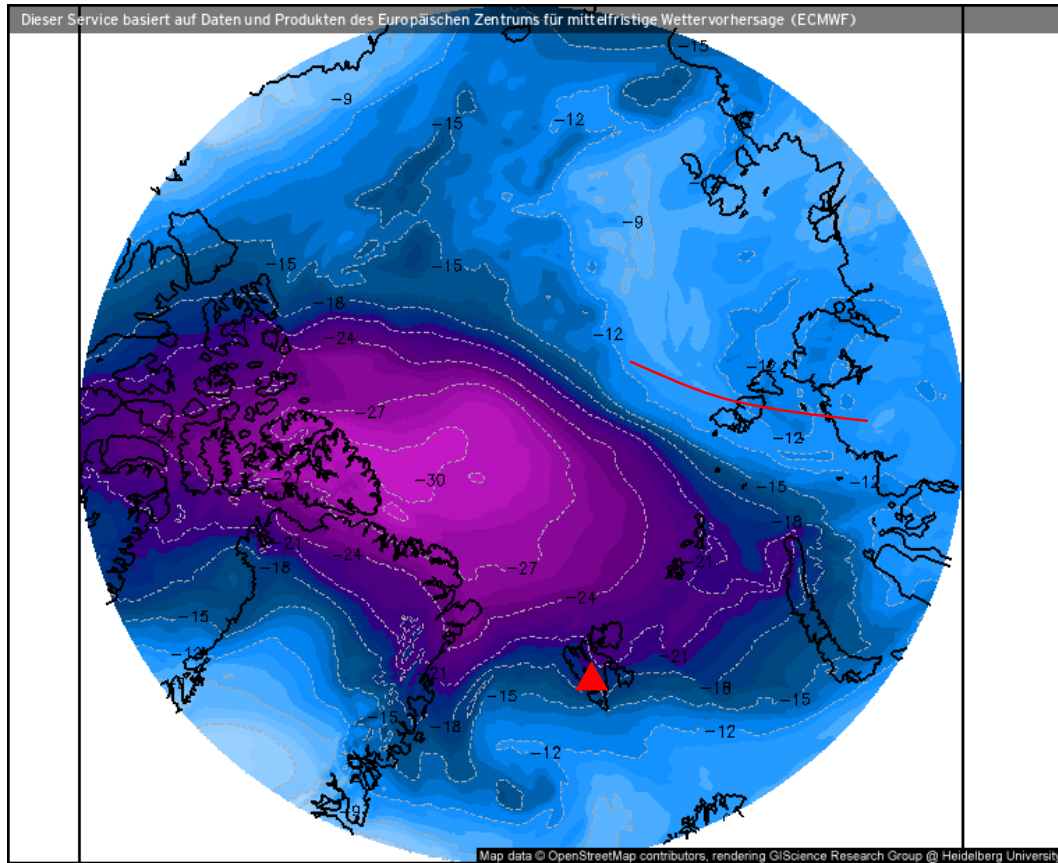


Prognose für  
Di. 13.04.2021, 14:00 Uhr MESZ

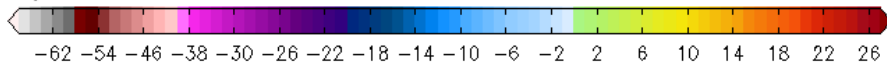
Nordpol (Zoomstufe 1)

ECMWF/Global Euro HD vom 13.04.2021/00Z

# Temperature 850 hPa (13.04.2021 12 UTC)



Temperatur, 850hPa (°C)



Prognose für

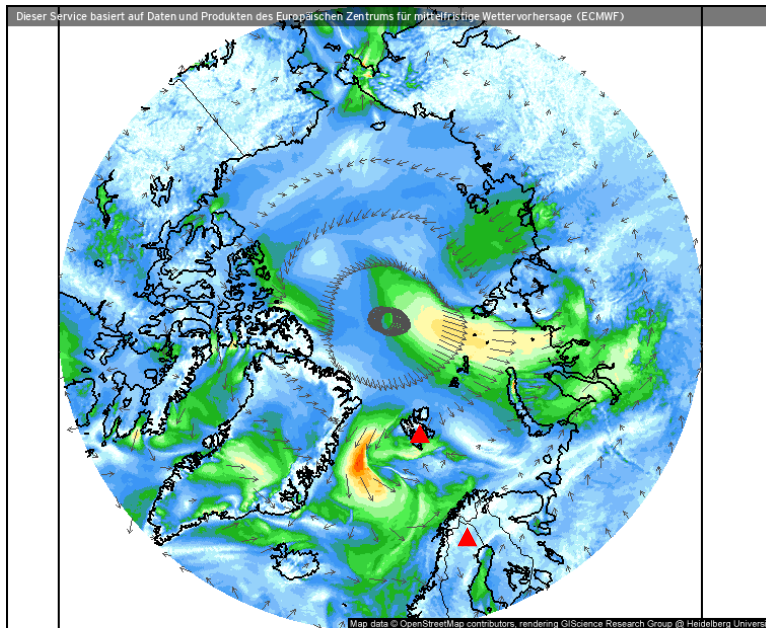
Di. 13.04.2021, 14:00 Uhr MESZ

Nordpol (Zoomstufe 1)

ECMWF/Global Euro HD vom 13.04.2021/00Z

# Wind, $\theta_{eq}$ , z, IWV (13.04.2021 12 UTC)

## Wind speed and streamlines



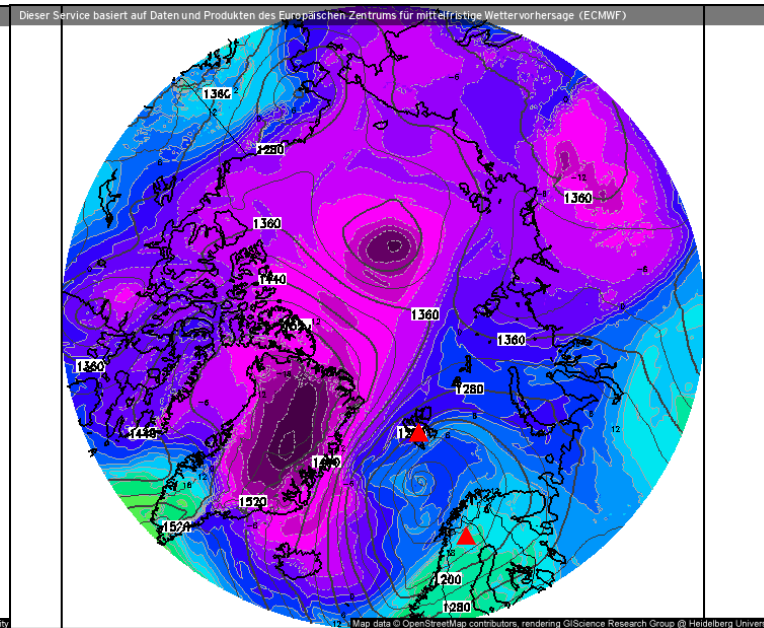
Windrichtung und Windmittel (m/s)



Nordpol  
ECMWF/Global Euro HD vom 13.04.2021/00Z

Prognose für  
Di. 13.04.2021, 14:00 Uhr MESZ  
ECMWF kachelmannwetter.com  
WETTER HD

## Theta-E and geopotential (850 hPa)



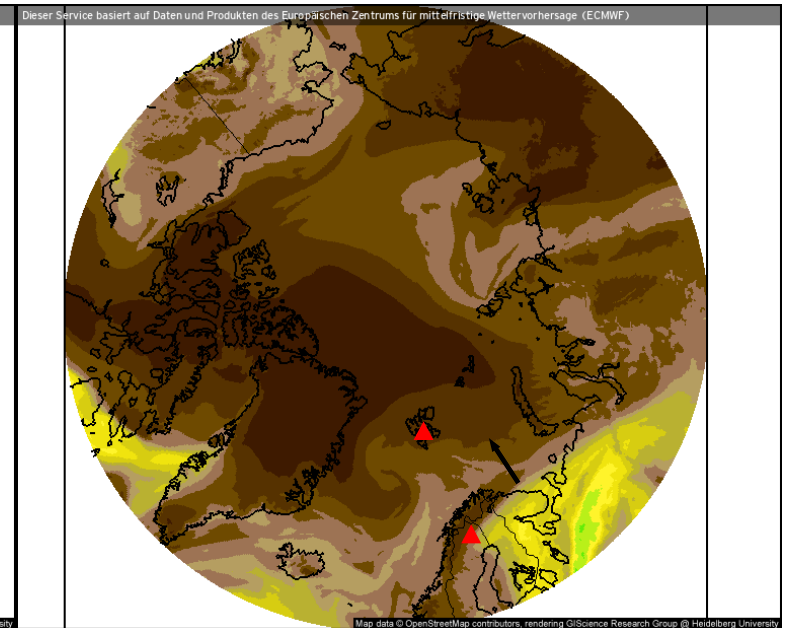
Theta-E und Geopot, 850hPa (°C)



Nordpol  
ECMWF/Global Euro HD vom 04.04.2021/12Z

Prognose für  
So. 04.04.2021, 14:00 Uhr MESZ  
ECMWF kachelmannwetter.com  
WETTER HD

## Precipitable water



Atmosphärisches Niederschlagswasser (mm)



Nordpol  
ECMWF/Global Euro HD vom 13.04.2021/00Z

Prognose für  
13.04.2021, 14:00 Uhr MESZ  
ECMWF kachelmannwetter.com  
WETTER HD

- Cold air outbreak west of Svalbard
- Stronger winds over Fram Strait

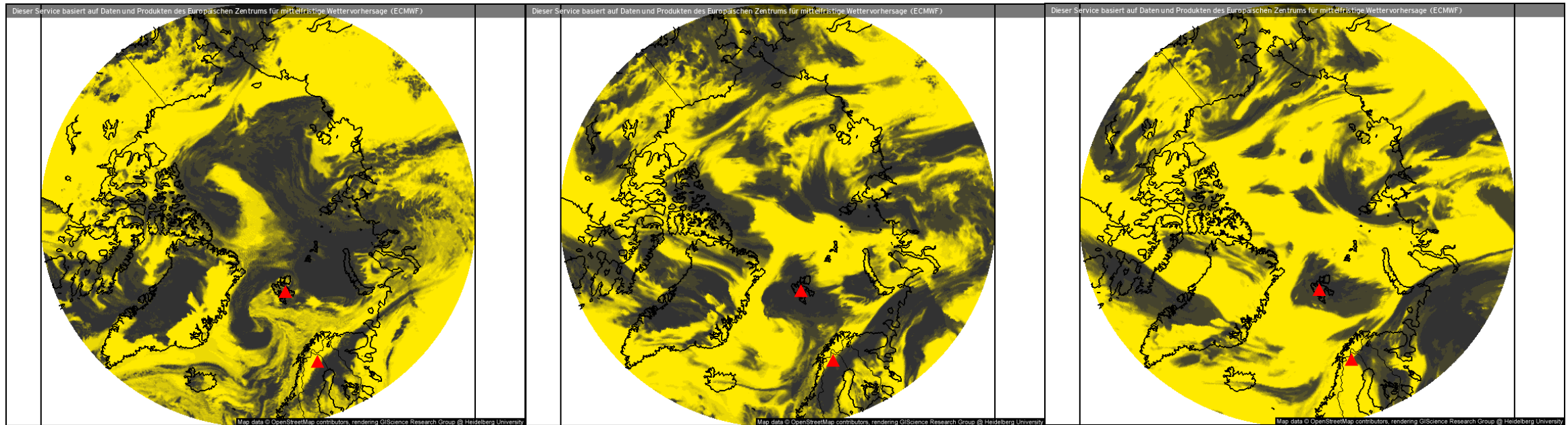


# Clouds (13.04.2021 12 UTC)

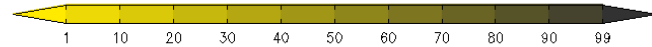
## Low-level clouds

## Mid-level clouds

## High-level clouds



Bedeckungsgrad, niedrige Wolken (%)

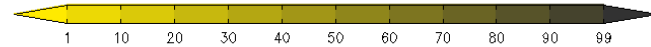


Prognose für  
Di. 13.04.2021, 14:00 Uhr MESZ

Nordpol  
ECMWF/Global Euro HD vom 13.04.2021/00z

ECMWF kachelmannwetter.com  
WETTER HD

Bedeckungsgrad, mittlere Wolken (%)

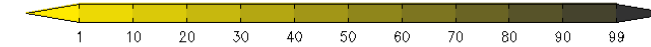


Prognose für  
Di. 13.04.2021, 14:00 Uhr MESZ

Nordpol  
ECMWF/Global Euro HD vom 13.04.2021/00z

ECMWF kachelmannwetter.com  
WETTER HD

Bedeckungsgrad, hohe Wolken (%)



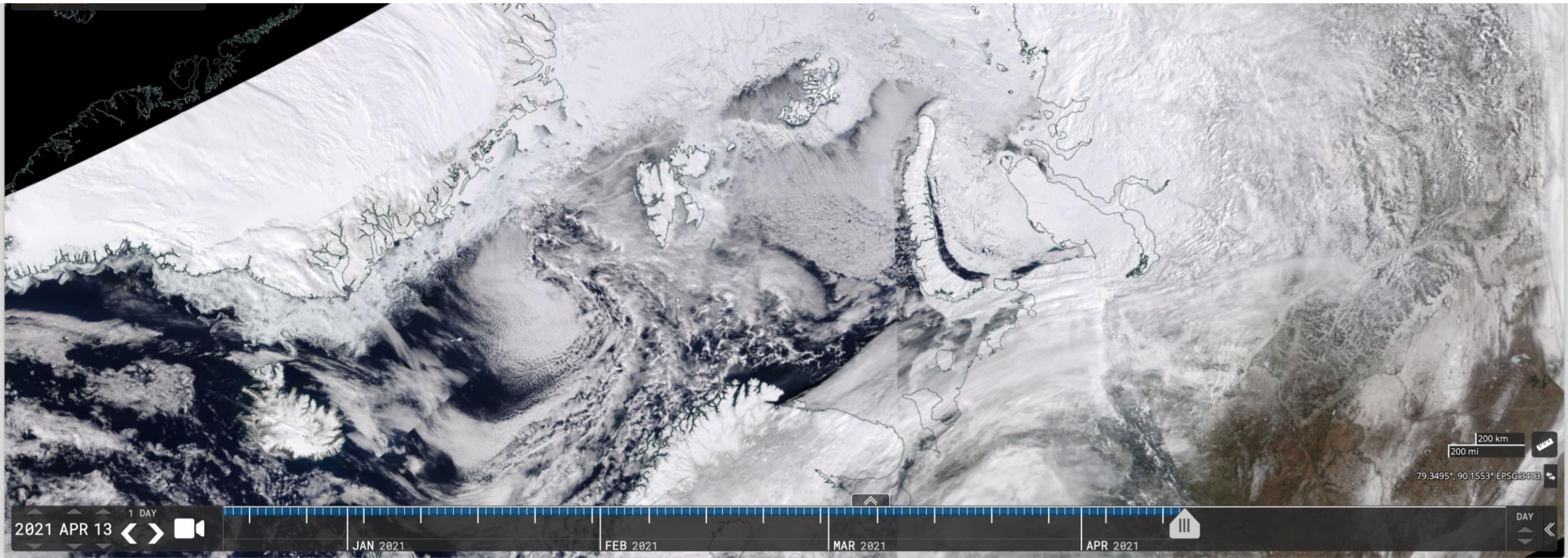
Prognose für  
Di. 13.04.2021, 14:00 Uhr MESZ

Nordpol  
ECMWF/Global Euro HD vom 13.04.2021/00z

ECMWF kachelmannwetter.com  
WETTER HD

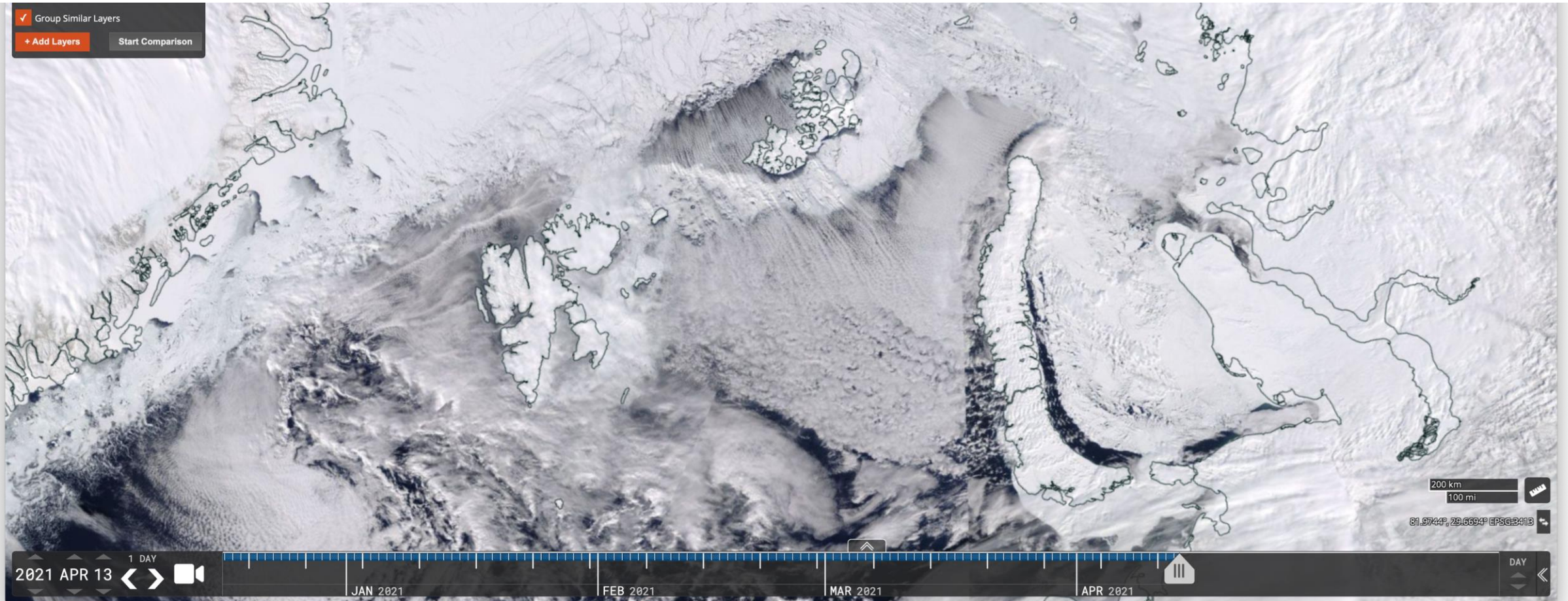
- Svalbard partly cloudy

# VIIRS (NOAA-20) (13.04.2021)



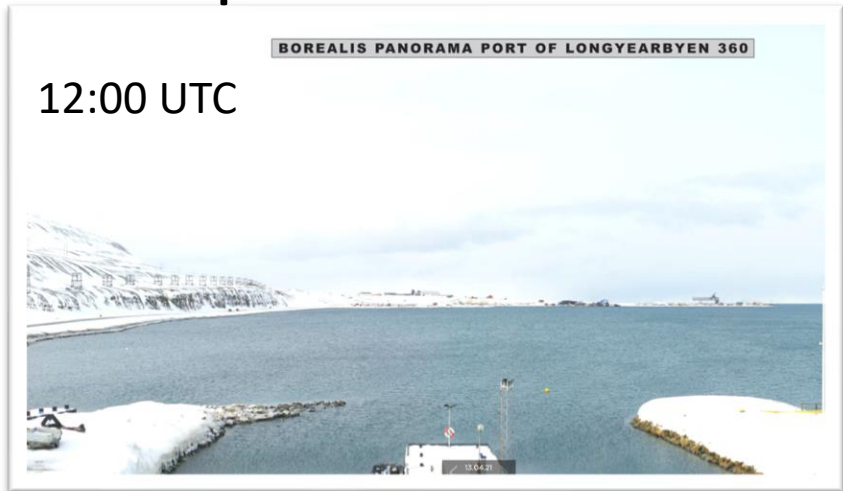


# VIIRS (NOAA-20) (13.04.2021)





# Airport situation: Longyearbyen (13.04.2021)



12:00 UTC

- Good visibility
- Some scattered clouds
- Good flight conditions

## Svalbard Airport. Longyear

Longyearbyen, Norway

latitude: 78-15N, longitude: 015-28E,  
elevation: 2 m

### Current weather observation

The report was made **40 minutes ago**, at **11:20 UTC**

Wind **17 kt** from the **East/Southeast**

Temperature **-10°C**

Humidity **61%**

Pressure **1013 hPa**

Visibility **10 km or more**

**Few clouds** at a height of **2000 ft**  
**Broken clouds** at a height of **20000 ft**

Time: 14:00 (12:00 UTC)

### Forecast

Forecast valid from 13 at 12 UTC to 14 at 12 UTC

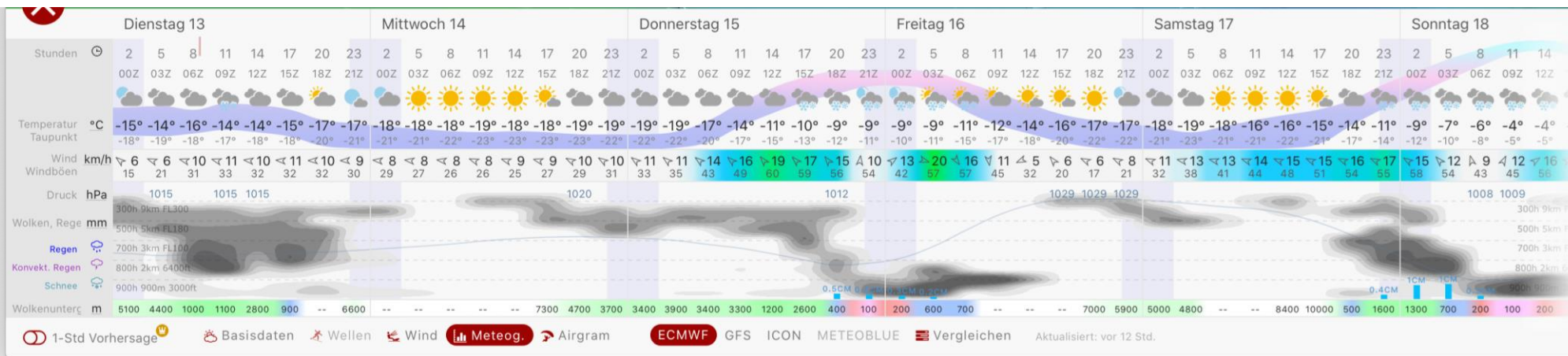
Wind **15 kt** from the **Southeast**

Visibility **10 km or more**

**Few clouds** at a height of **2000 ft**  
**Scattered clouds** at a height of **5000 ft**

**Low drifting snow**

**TAF:** ENSB 1312/1412 13015KT 9999  
DRSN FEW020 SCT050



# Airport situation: Kiruna (13.04.2021)

- Good visibility, no clouds
- Perfect flight conditions

## Kiruna Airport

Kiruna, Sweden

latitude: 67-49N, longitude: 020-20E,  
elevation: 452 m

### Current weather observation

The report was made **40 minutes ago**, at **11:20 UTC**

Wind **9 kt** from the **North/Northwest**

Temperature **-2°C**

Humidity **59%**

Pressure **1012 hPa**

Visibility **10 km or more**

**no clouds below 1500 m and no cumulonimbus**

Time: 14:00 (12:00 UTC)

### Forecast

The report was made **30 minutes ago**, at **11:30 UTC**

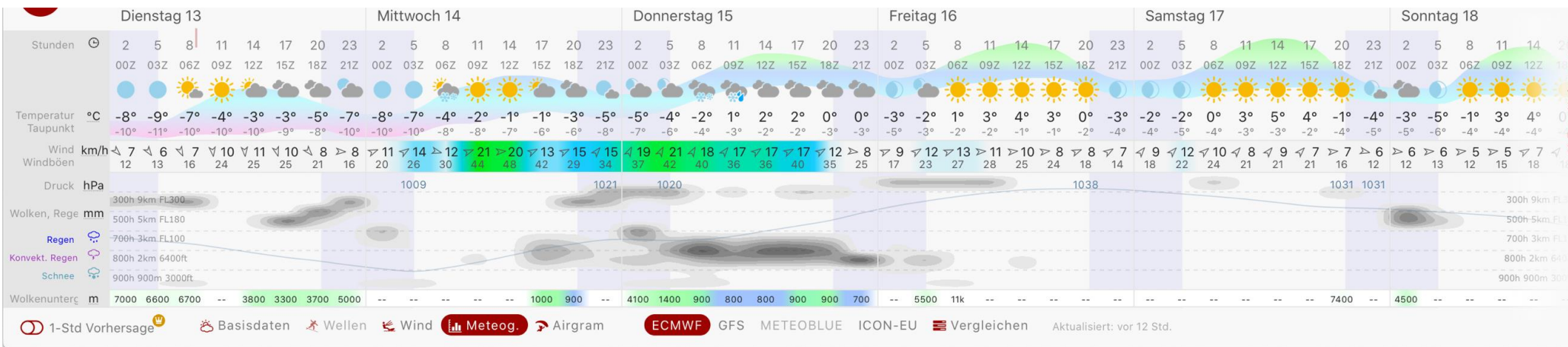
Forecast valid from **13 at 12 UTC to 13 at 17 UTC**

Wind **8 kt** from the **North**

Visibility **10 km or more**

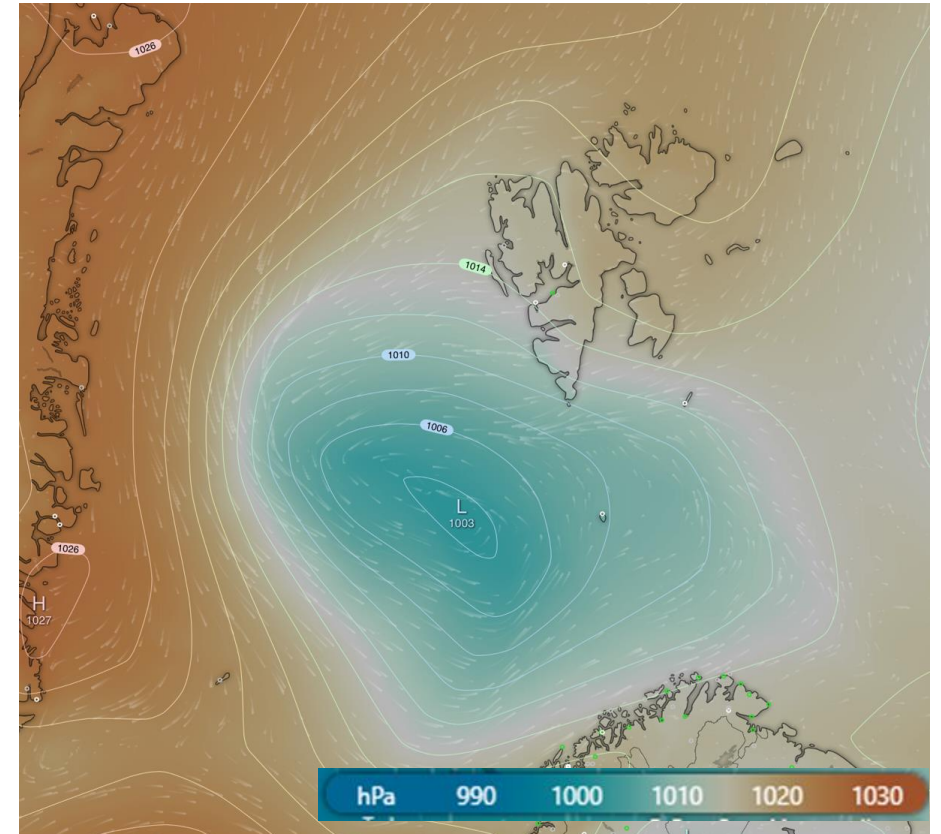
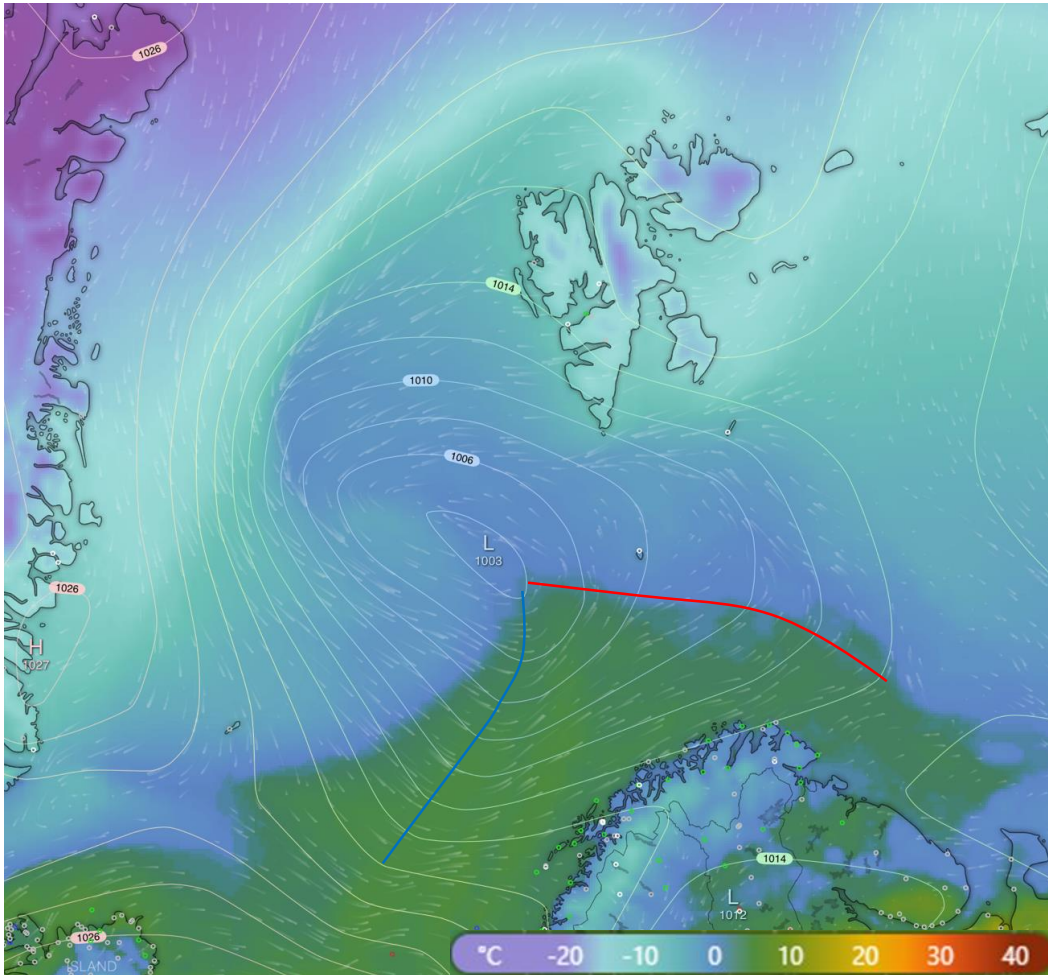
**no clouds below 1500 m and no cumulonimbus**

**TAF: ESNQ 131130Z 1312/1317 35008KT CAVOK**





# Windy surface temperature/pressure (13.04.2021)



## Summary

- Svalbard influenced by low pressure system south-west of the island