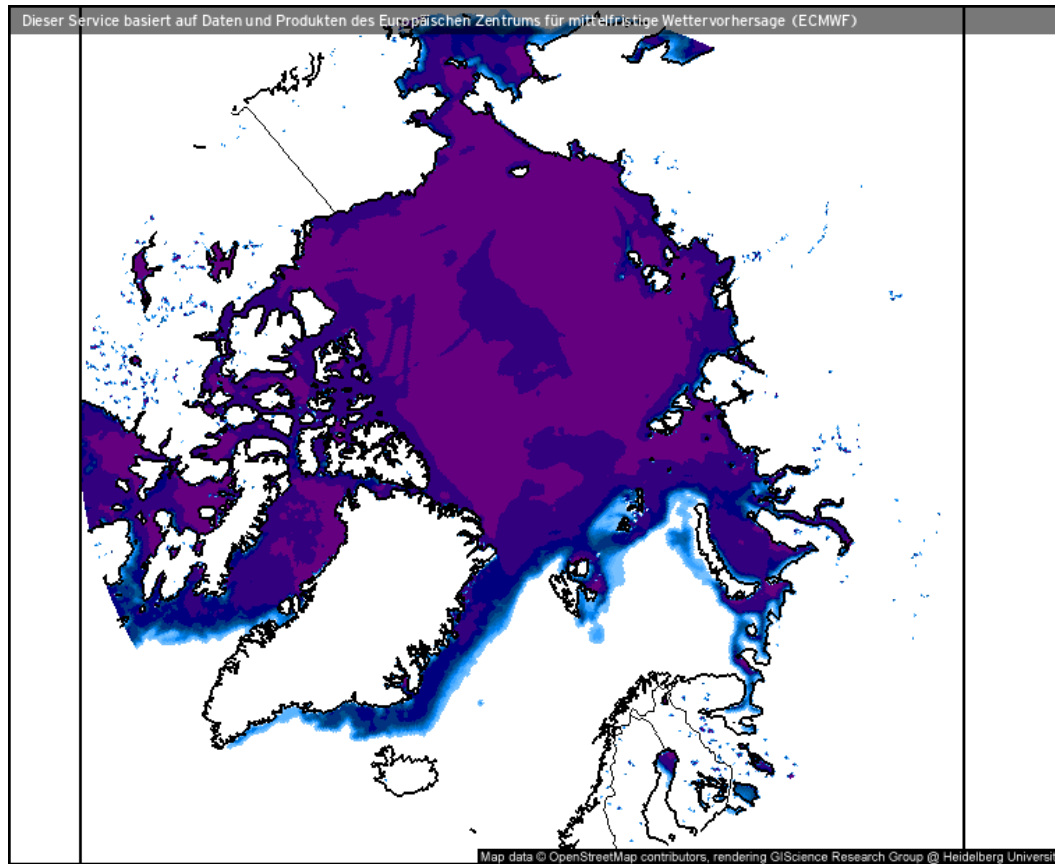


Weather observations

12.04.2021

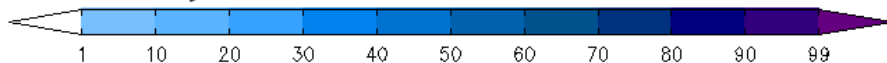
Johannes | Marcus

Sea ice cover (12.04.2021 12 UTC)



- Still pronounced Whaler's Bay polynya
- Small drift ice expansion to the east of Svalbard

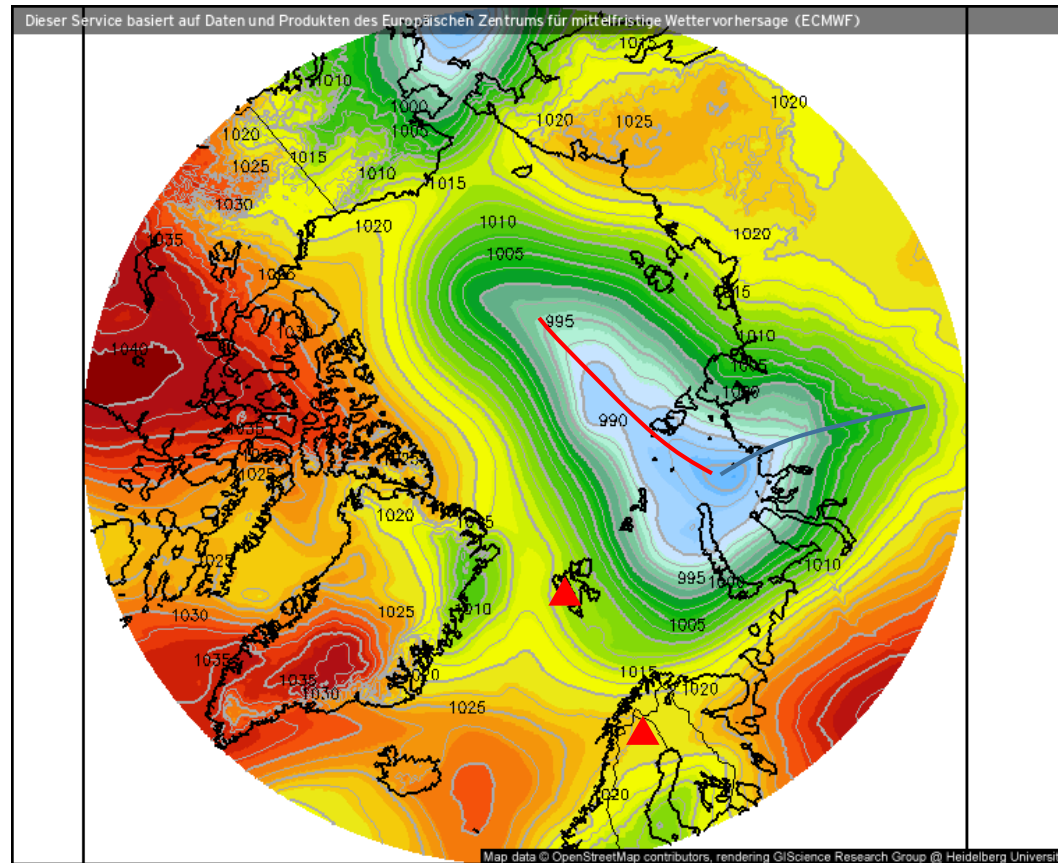
Eisbedeckung (Meere und Seen) (%)



Prognose für
Mo. 12.04.2021, 14:00 Uhr MESZ

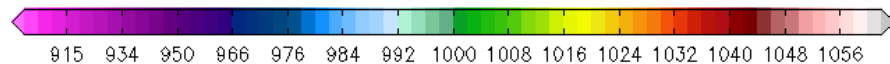
Nordpol
ECMWF/Global Euro HD vom 12.04.2021/00Z

Surface air pressure (12.04.2021 12 UTC)



- Strong Low over the Kara Sea
- High east of Iceland and over the south of Greenland forming a blocking situation -> no air exchange with mid latitudes
- Weak low over the north east of Greenland

Luftdruck auf Meereshöhe (hPa)



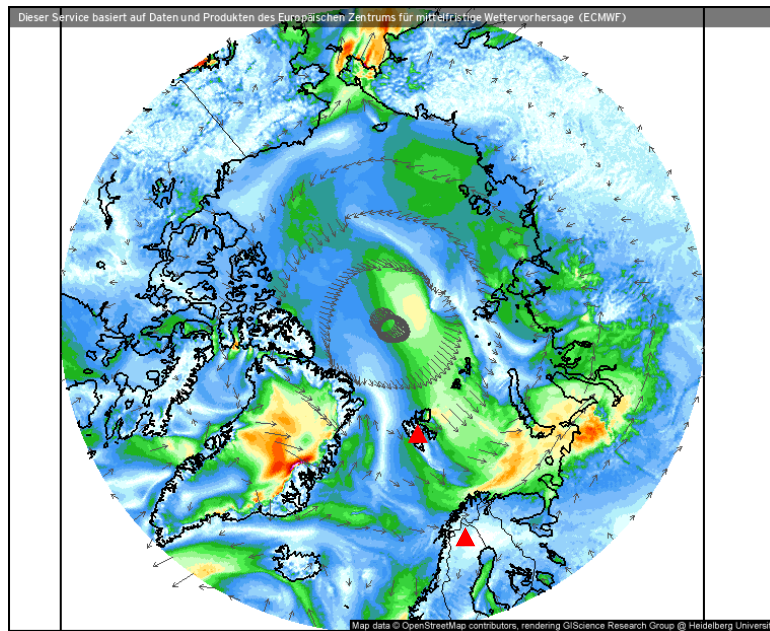
Prognose für

Mo. 12.04.2021, 14:00 Uhr MESZ

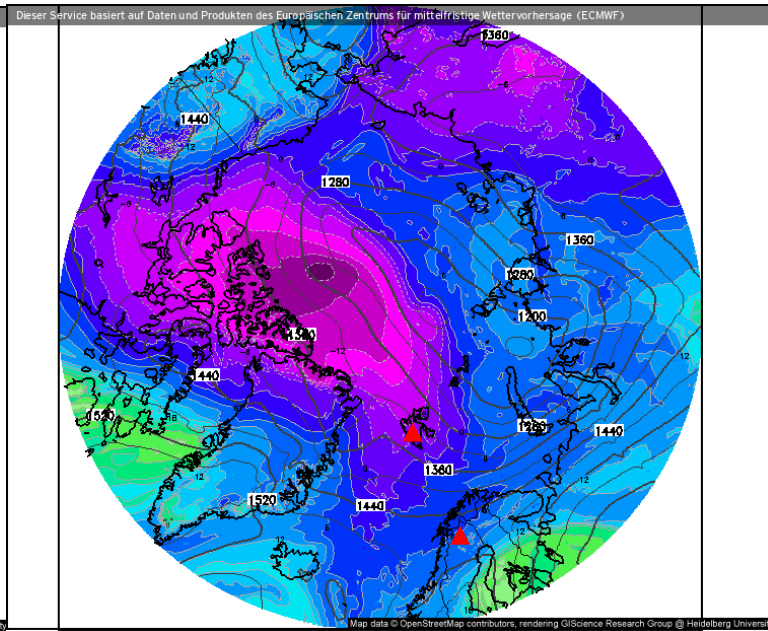
Nordpol
ECMWF/Global Euro HD vom 12.04.2021/12Z

Wind, θ_{eq} , z, IWV (12.04.2021 12 UTC)

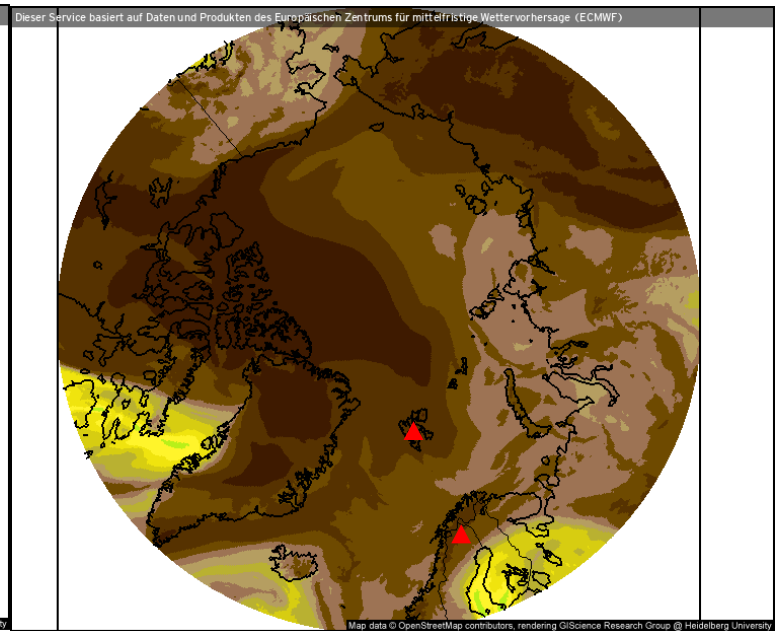
Wind speed and streamlines



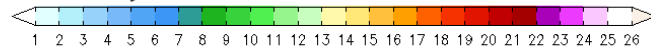
Theta-E and geopotential (850 hPa)



Precipitable water



Windrichtung und Windmittel (m/s)



Prognose für Mo. 12.04.2021, 14:00 Uhr MESZ

Theta-E und Geopot, 850hPa (°C)



Prognose für Mo. 12.04.2021, 14:00 Uhr MESZ

Atmosphärisches Niederschlagswasser (mm)



Prognose für 12.04.2021, 14:00 Uhr MESZ

Nordpol
ECMWF/Global Euro HD vom 12.04.2021/00z

ECMWF kachelmannwetter.com
WETTER HD

Nordpol
ECMWF/Global Euro HD vom 12.04.2021/00z

ECMWF kachelmannwetter.com
WETTER HD

Nordpol
ECMWF/Global Euro HD vom 12.04.2021/00z

ECMWF kachelmannwetter.com
WETTER HD

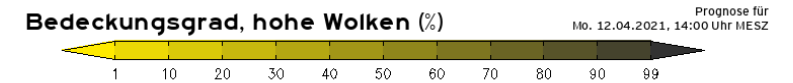
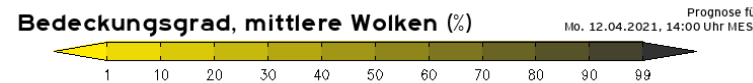
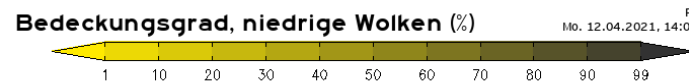
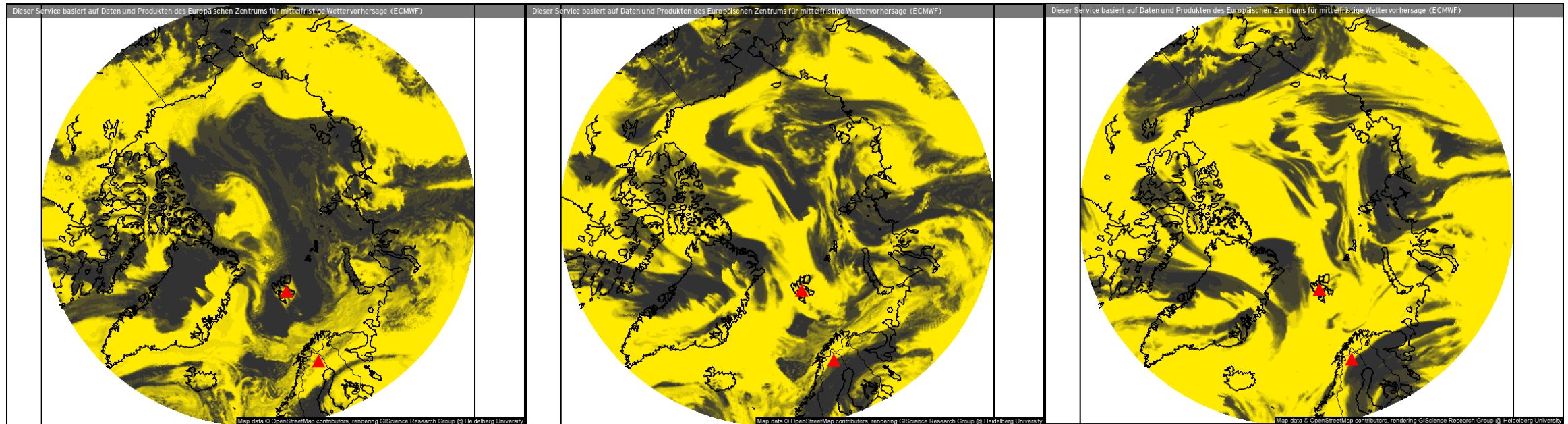
- Weak winds over Fram Strait which switch from southerly in the west to northerly in the east
- Dry atmosphere over Svalbard
- Westerly winds west of Kiruna

Clouds (12.04.2021 12 UTC)

Low-level clouds

Mid-level clouds

High-level clouds



Nordpol
ECMWF/Global Euro HD vom 12.04.2021/00z

ECMWF kachelmannwetter.com
WETTER HD

Nordpol
ECMWF/Global Euro HD vom 12.04.2021/00z

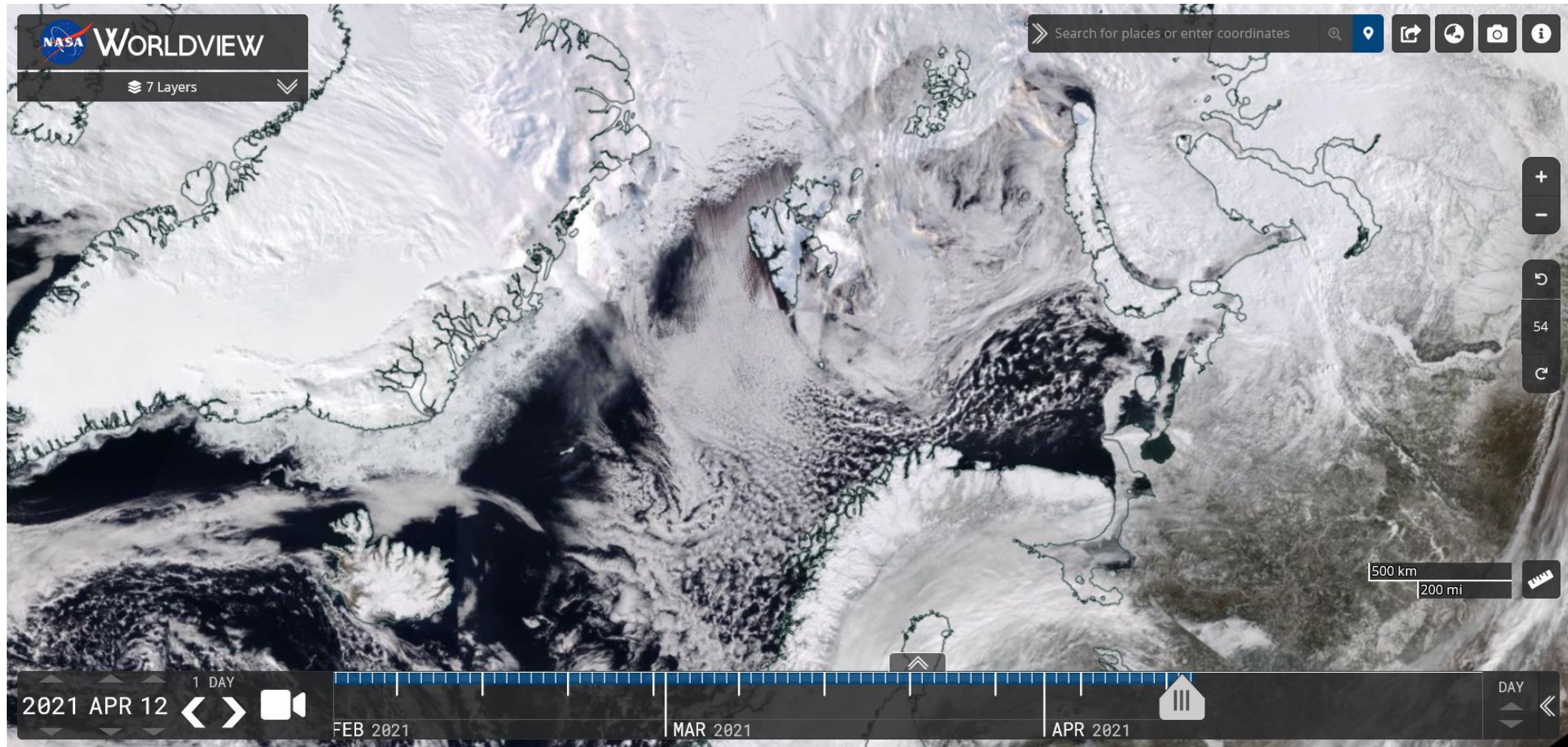
ECMWF kachelmannwetter.com
WETTER HD

Nordpol
ECMWF/Global Euro HD vom 12.04.2021/00z

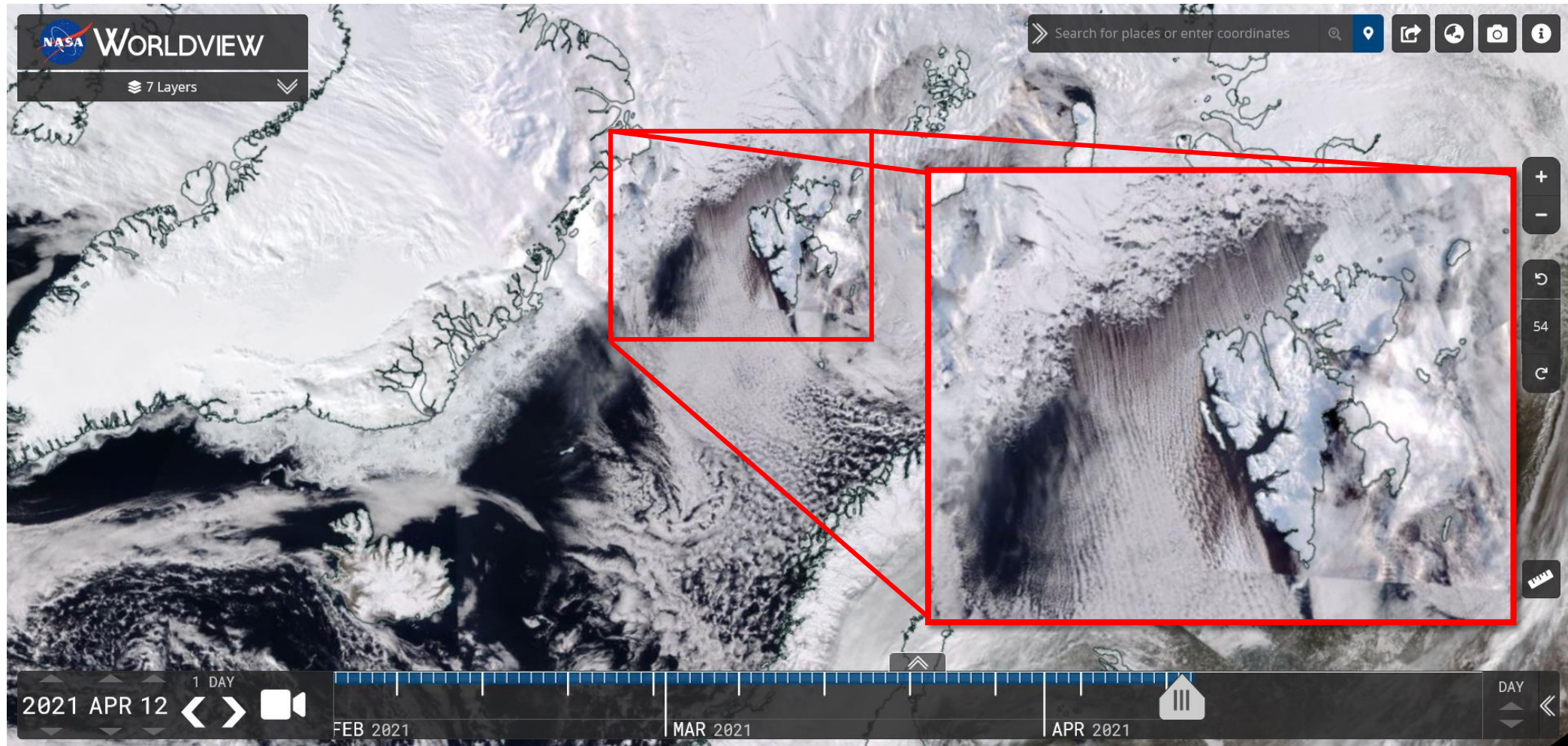
ECMWF kachelmannwetter.com
WETTER HD

- Kiruna cloud-free
- Svalbard surrounded by low clouds -> cloud streets over Whaler's Bay Polynya and Fram Strait

VIIRS (NOAA-20) (12.04.2021)



VIIRS (NOAA-20) (12.04.2021)

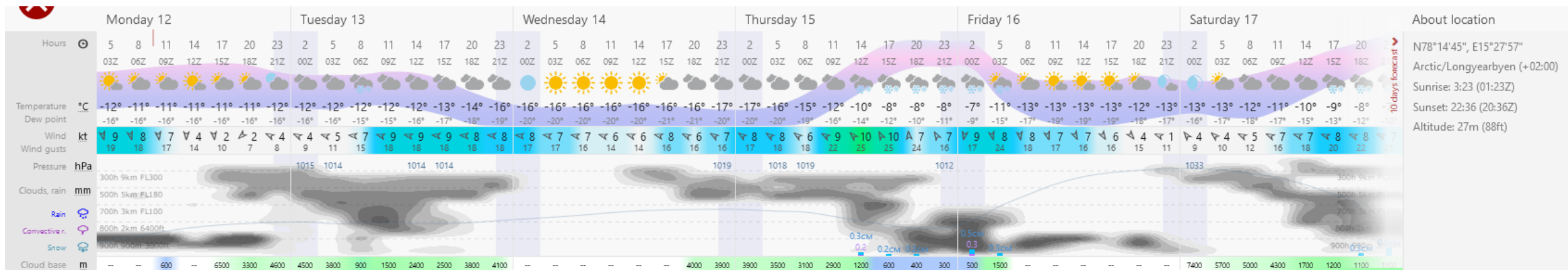


Airport situation: Longyearbyen (12.04.2021)



ENSB 121150Z 36008KT 9999 FEW035 M08/M17
Q1012 NOSIG RMK WIND 1400FT 01009KT

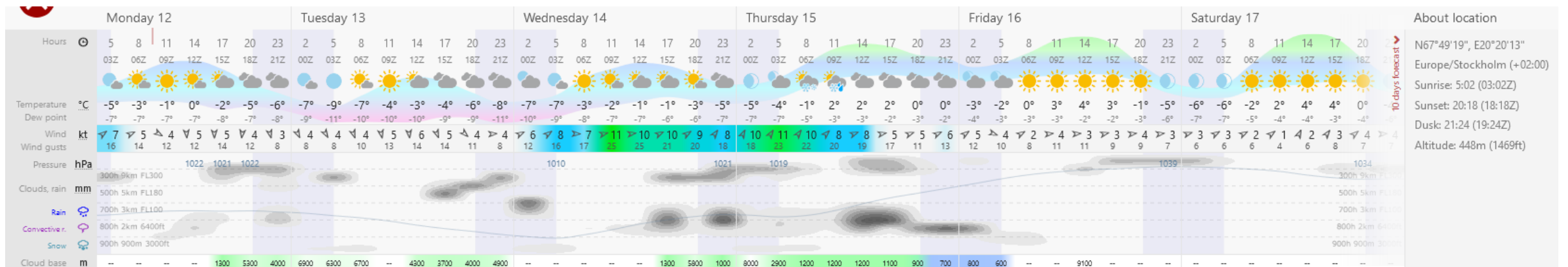
- Perfect visibility
- Some low clouds
- Suitable for flight



Airport situation: Kiruna (12.04.2021)

- Good visibility, almost no clouds
- Perfect flight conditions

121150Z 35006KT 310V020 9999 SCT046 01/M07
Q1019



Windy surface temperature/pressure (12.04.2021 12 UTC)



Summary

- Small cold air outbreak over Whaler's Bay with nice cloud streets
- Perfect flight conditions in Longyearbyen and Kiruna
- Cold air gets diverted over Novaya Zemlya due to a blocking high pressure system east of Iceland
- Sampling of cloud streets possible: Onset North of Svalbard and dissipation North of Scandinavian Peninsula