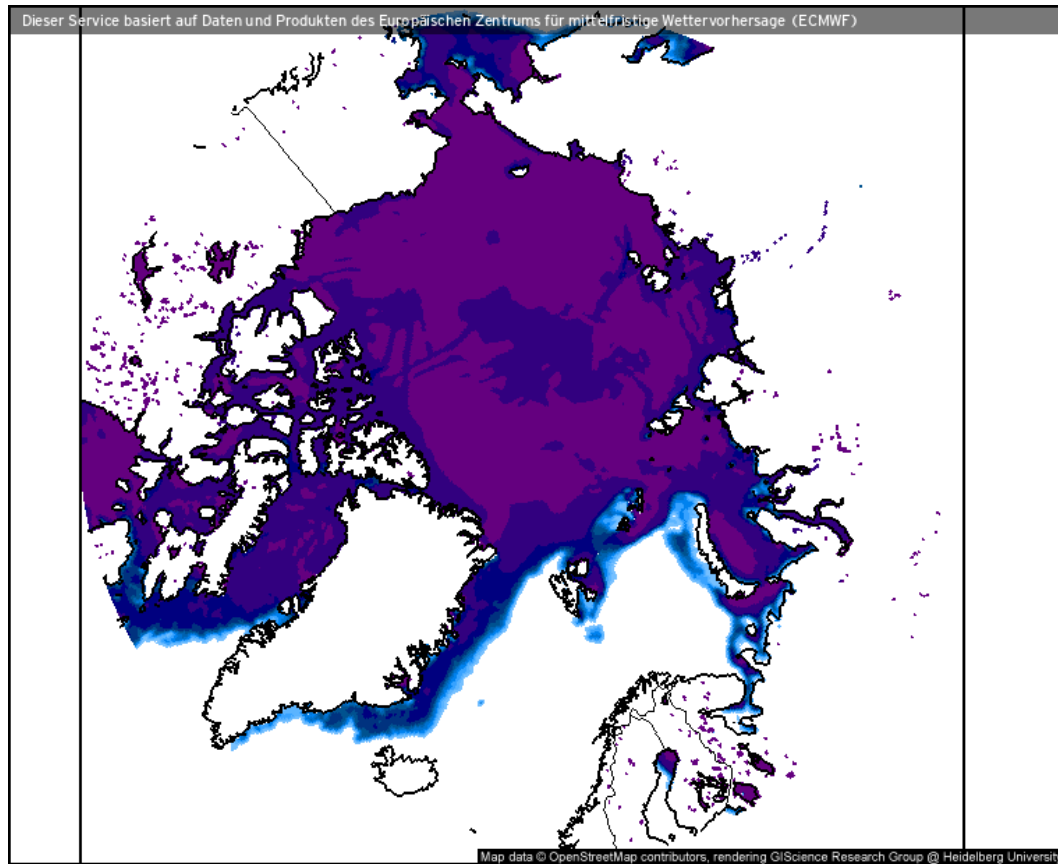


Weather observations

11.04.2021

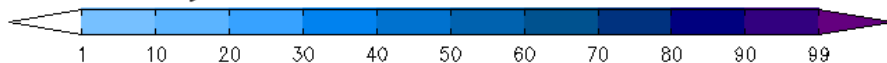
Tim | Benjamin

Sea ice cover (11.04.2021 12 UTC)



- Still pronounced Whaler's Bay polynia
- No significant sea-ice change

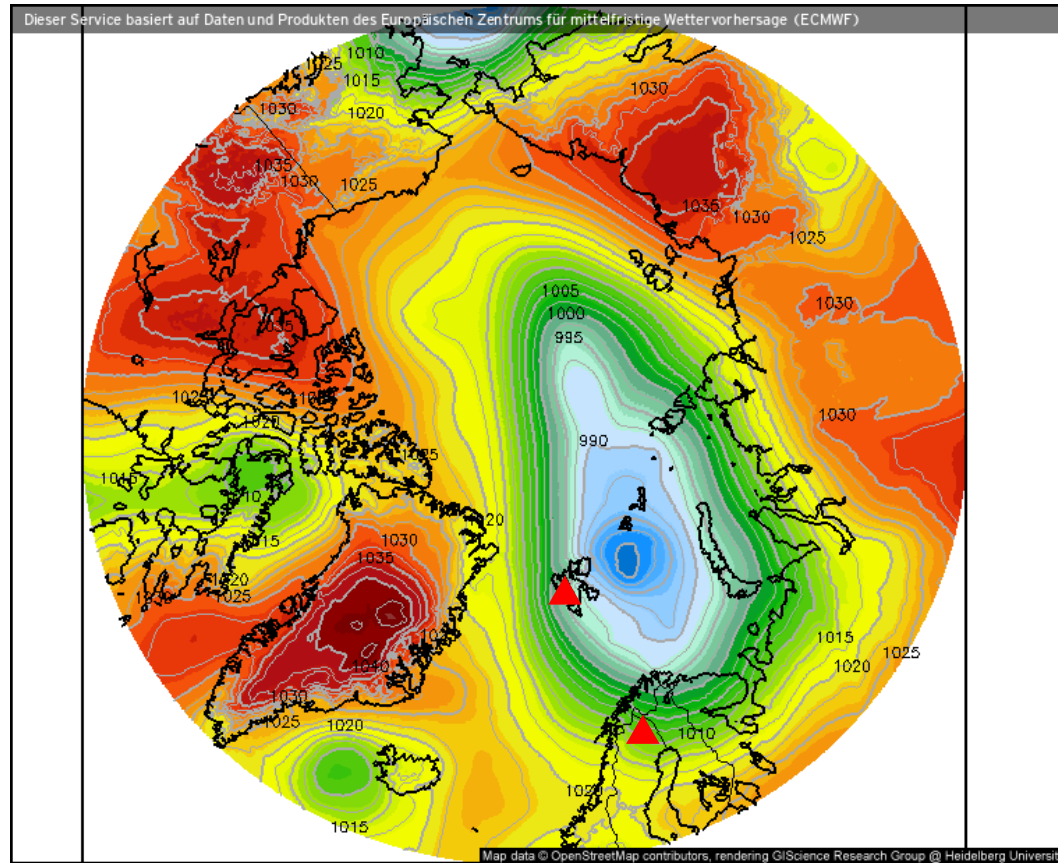
Eisbedeckung (Meere und Seen) (%)



Prognose für
So. 11.04.2021, 14:00 Uhr MESZ

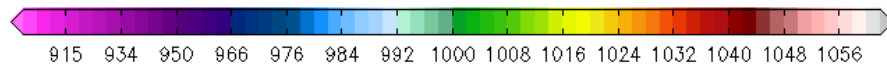
Nordpol
ECMWF/Global Euro HD vom 11.04.2021/12Z

Surface air pressure (11.04.2021 12 UTC)



- Parts of the low extend into central Arctic

Luftdruck auf Meereshöhe (hPa)



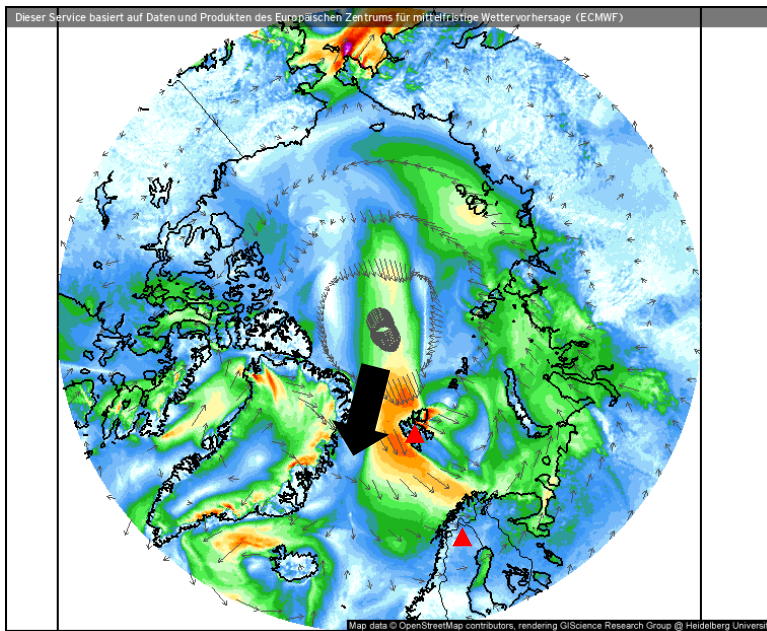
Prognose für

So. 11.04.2021, 14:00 Uhr MESZ

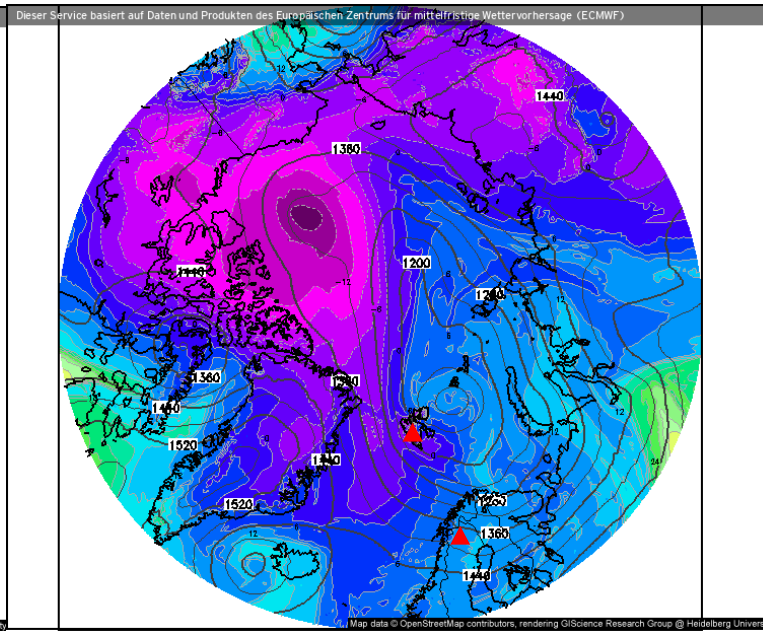
Nordpol
ECMWF/Global Euro HD vom 11.04.2021/12Z

Wind, θ_{eq} , z, IWV (11.04.2021 12 UTC)

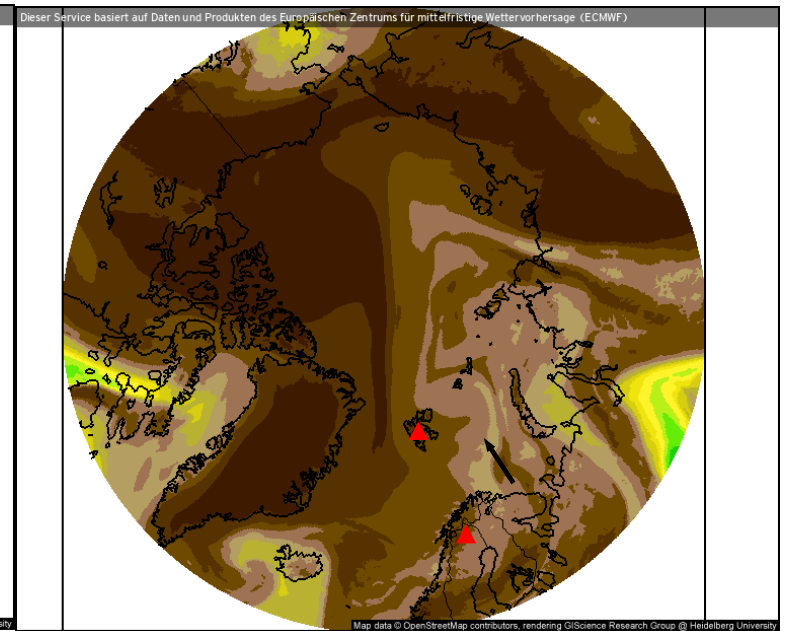
Wind speed and streamlines



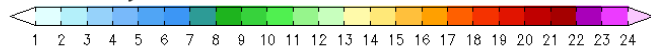
Theta-E and geopotential (850 hPa)



Precipitable water



Windrichtung und Windmittel (m/s)



Prognose für So. 11.04.2021, 14:00 Uhr MESZ

Theta-E und Geopot, 850hPa (°C)



Prognose für So. 11.04.2021, 14:00 Uhr MESZ

Atmosphärisches Niederschlagswasser (mm)



Prognose für 11.04.2021, 14:00 Uhr MESZ

Nordpol
ECMWF/Global Euro HD vom 09.04.2021/12z

ECMWF
kachelmannwetter.com
WETTER HD

Nordpol
ECMWF/Global Euro HD vom 09.04.2021/12z

ECMWF
kachelmannwetter.com
WETTER HD

Nordpol
ECMWF/Global Euro HD vom 09.04.2021/12z

ECMWF
kachelmannwetter.com
WETTER HD

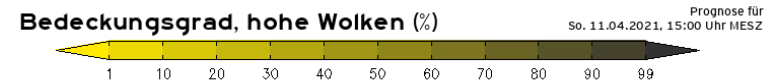
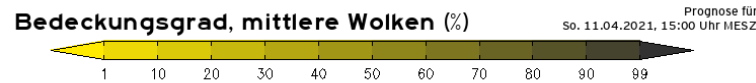
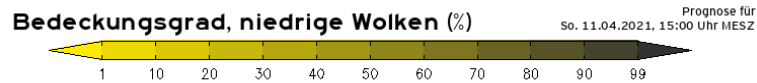
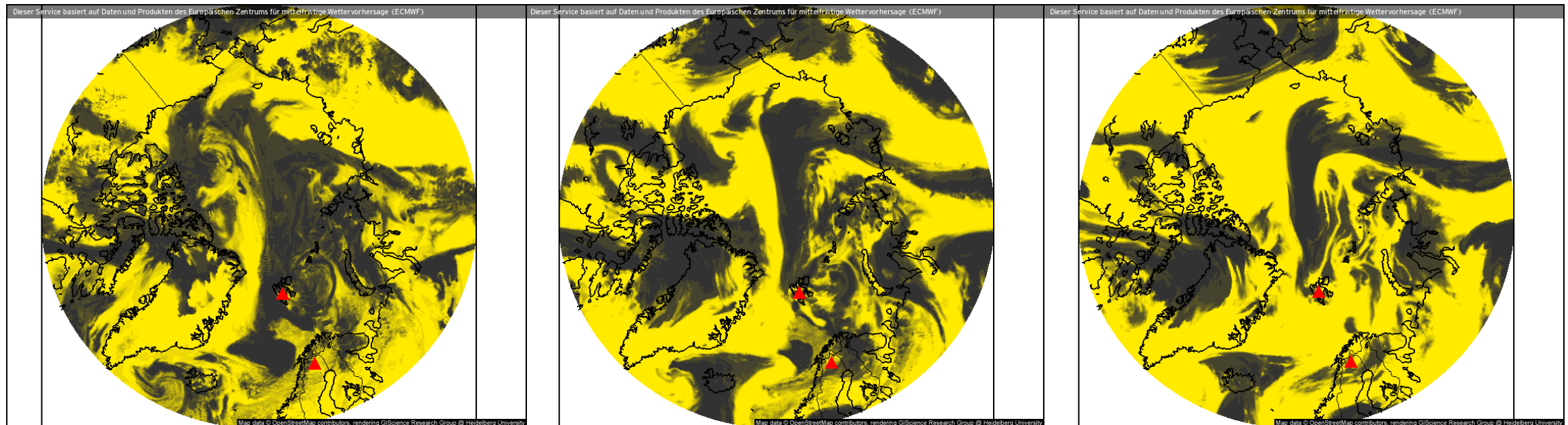
- Lower winds over Fram Strait – shifted southwards

Clouds (11.04.2021 13 UTC)

Low-level clouds

Mid-level clouds

High-level clouds



Nordpol
ECMWF/Global Euro HD vom 11.04.2021/12z

ECMWF kachelmannwetter.com
WETTER HD

Nordpol
ECMWF/Global Euro HD vom 11.04.2021/12z

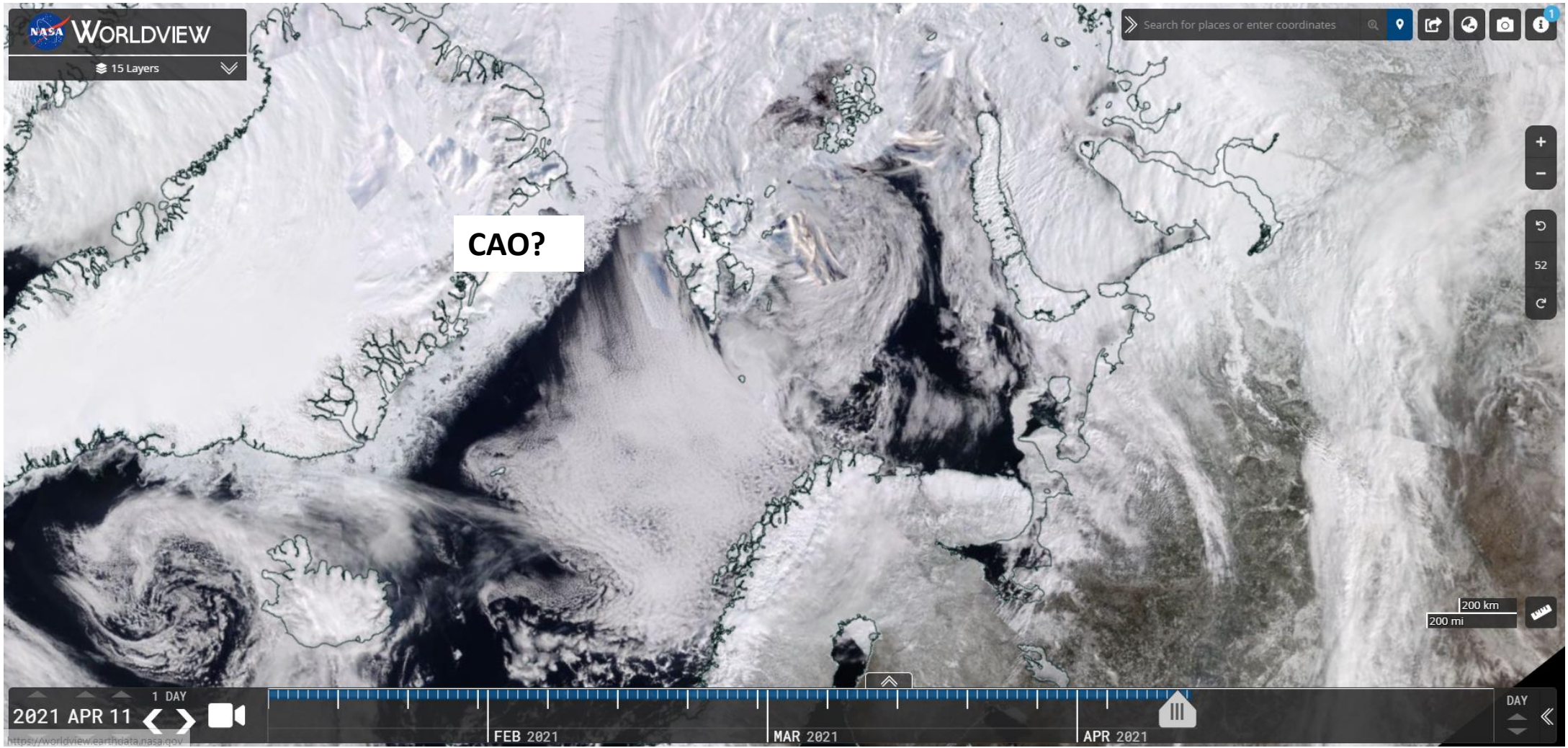
ECMWF kachelmannwetter.com
WETTER HD

Nordpol
ECMWF/Global Euro HD vom 11.04.2021/12z

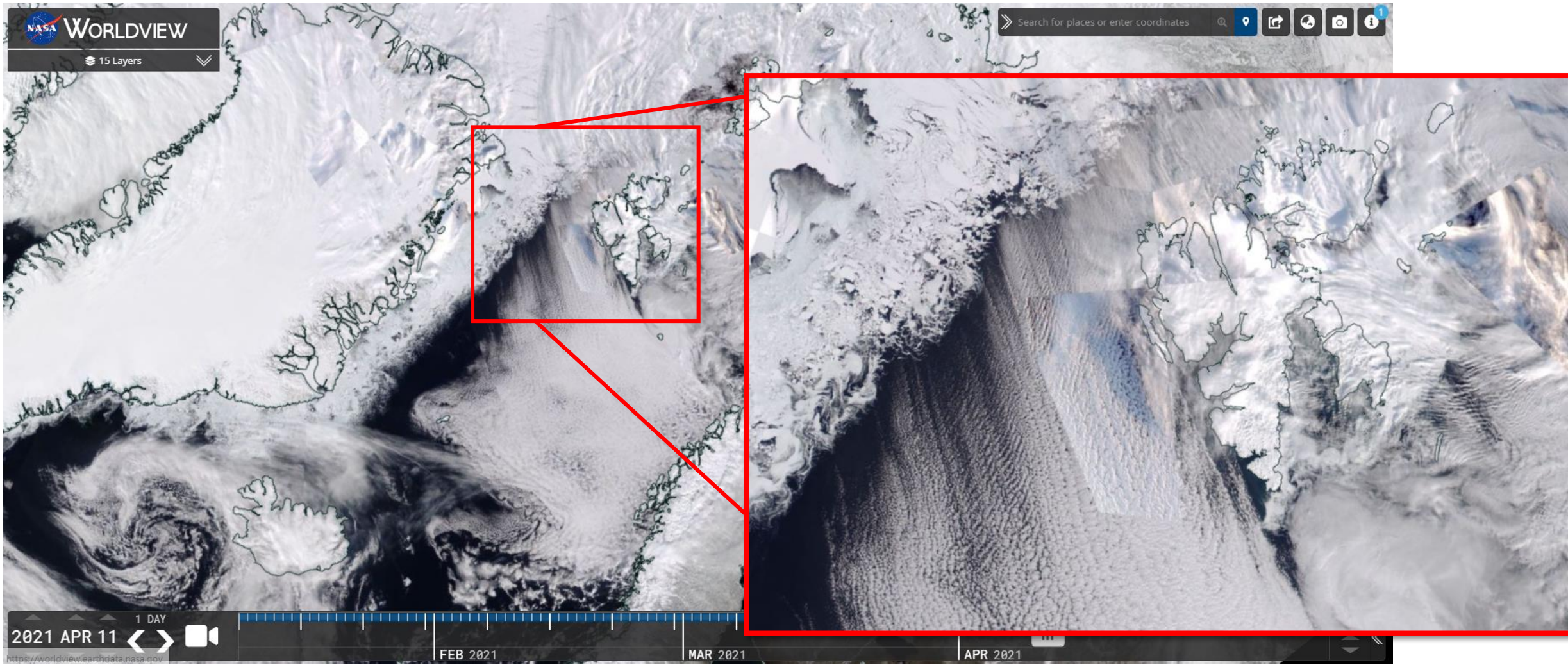
ECMWF kachelmannwetter.com
WETTER HD

- Few clouds over Kiruna
- Low clouds over Lyr
- Following the low, cloud band extends into central Arctic

VIIRS (NOAA-20) (11.04.2021)



VIIRS (NOAA-20) (11.04.2021)



Airport situation: Longyearbyen (11.04.2021)

Svalbard Airport. Longyear

Longyearbyen, Norway
 latitude: 78-15N, longitude: 015-28E,
 elevation: 2 m

Current weather observation

The report was made 52 minutes ago, at 11:20 UTC

Wind 21 kt from the North/Northwest

Temperature -8°C

Humidity 57%

Pressure 994 hPa

Visibility 10 km or more

Few clouds at a height of 2500 ft
 Scattered clouds at a height of 4000 ft

Change units

Time: 14:12 (12:12 UTC)

Forecast

Forecast valid from 11 at 12 UTC to 12 at 12 UTC

Wind 20 kt from the North

Visibility 10 km or more

Few clouds at a height of 1200 ft
 Scattered clouds at a height of 3000 ft

Temporary
 from 11 at 12 UTC to 11 at 21 UTC

Wind 25 kt from the North/Northwest with
 gusts up to 35 kt

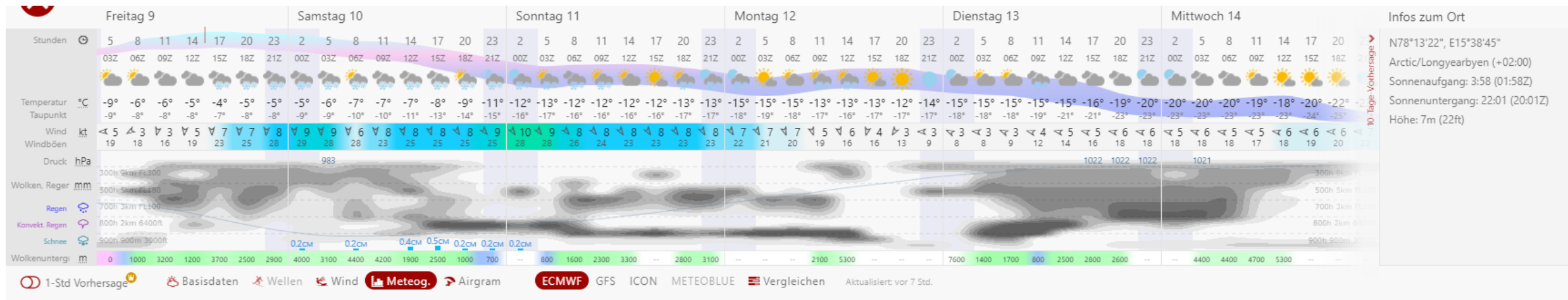
Low drifting snow

Becoming
 from 12 at 03 UTC to 12 at 06 UTC

Wind 10 kt from the North

TAF: ENSB 1112/1212 35020KT 9999
 FEW012 SCT030 TEMPO 1112/1121
 33025G35KT DRSN BECMG 1203/1206
 35010KT

- Conditions might be suitable for flight
- Caution, high winds



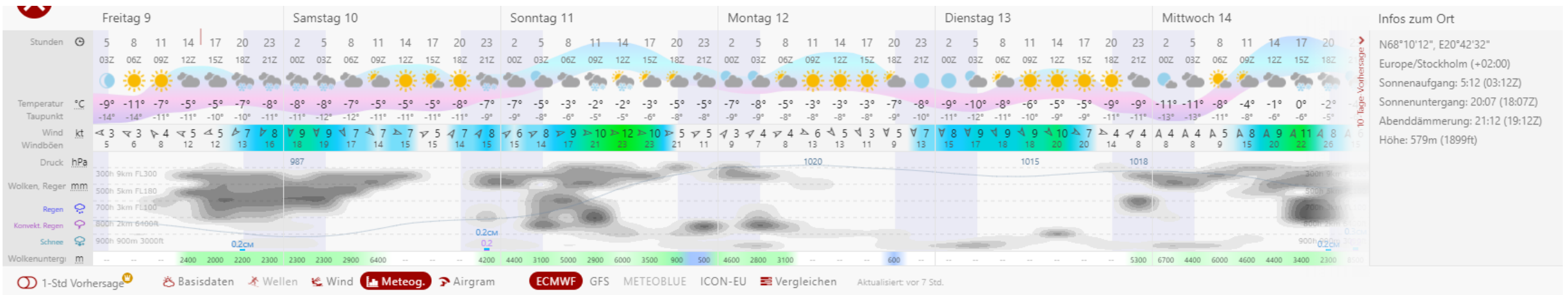
Airport situation: Kiruna (11.04.2021)

- Perfect flight conditions

Current weather observation
The report was made 21 minutes ago, at 11:50 UTC
Wind 14 kt from the West/Northwest
Temperature 2°C
Humidity 60%
Pressure 1006 hPa
Visibility 10 km or more
Change units

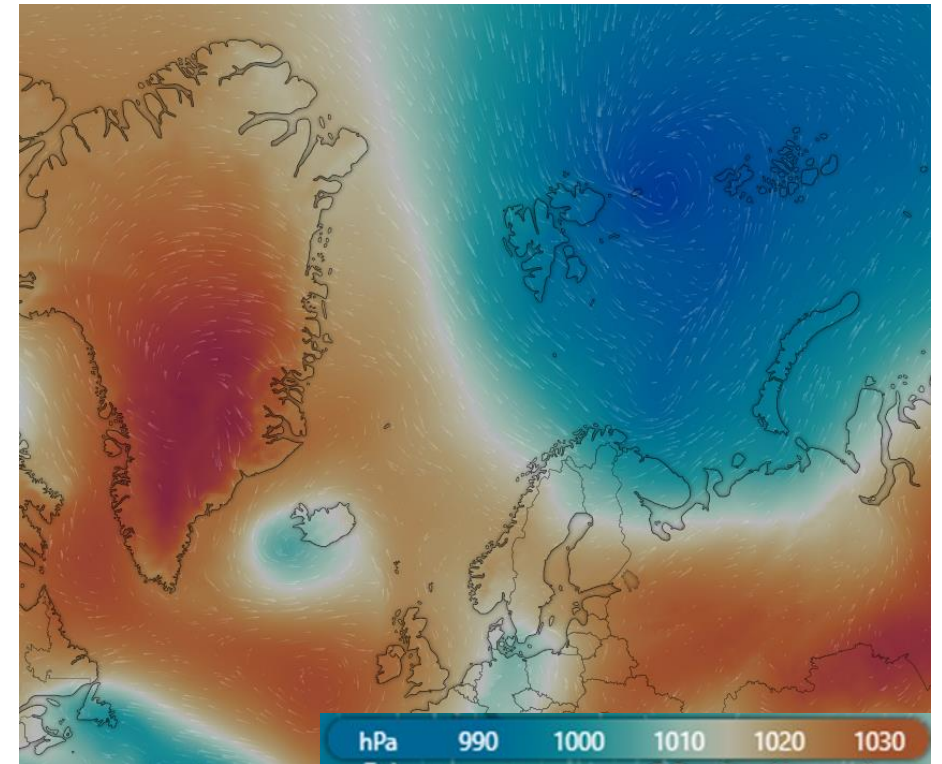
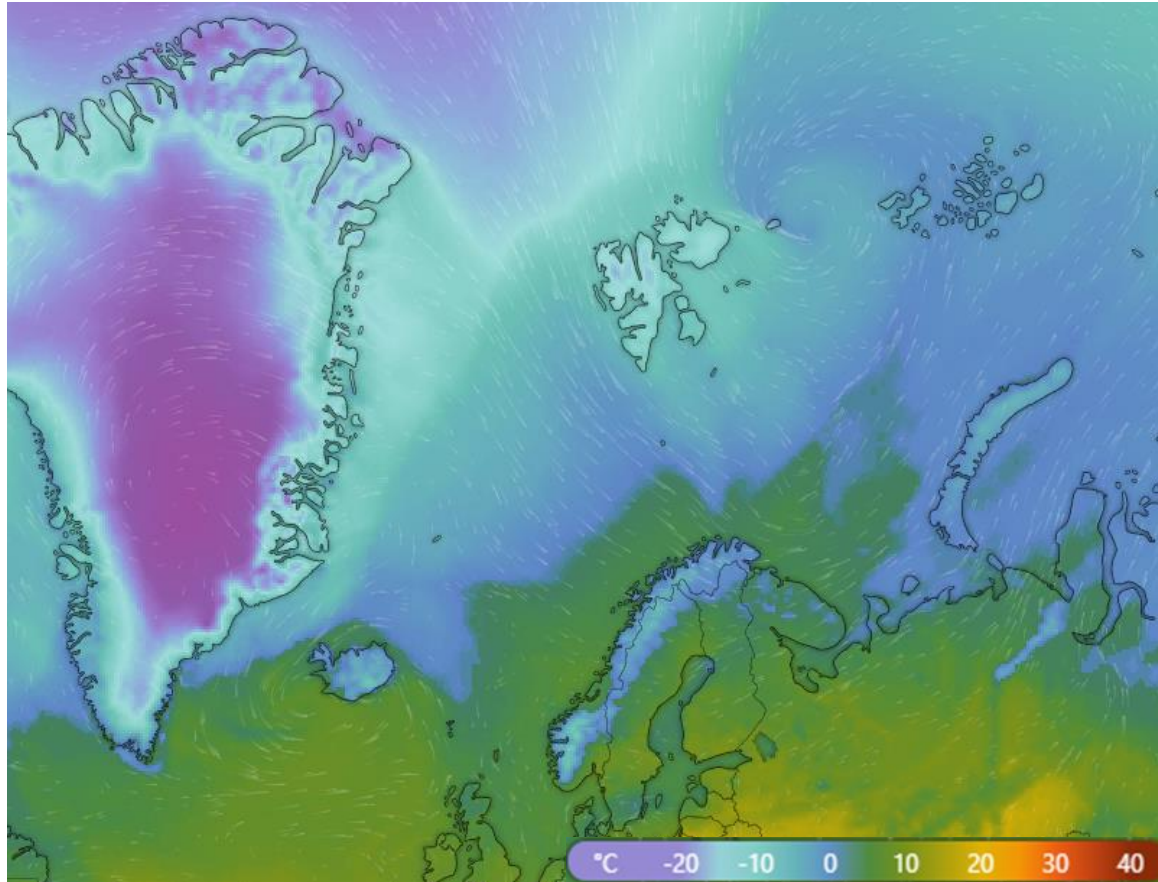
Time: 14:11 (12:11 UTC)

Forecast
The report was made 41 minutes ago, at 11:30 UTC
Forecast valid from 11 at 12 UTC to 11 at 19 UTC
Wind 15 kt from the West/Northwest with gusts up to 25 kt
Visibility 10 km or more
Scattered clouds at a height of 4000 ft
Becoming from 11 at 15 UTC to 11 at 17 UTC
Wind 12 kt from the West/Northwest
TAF: ESNQ 111130Z 1112/1119 29015G25KT 9999 SCT040 BECMG 1115/1117 29012KT



Infos zum Ort
 N68°10'12", E20°42'32"
 Europe/Stockholm (+02:00)
 Sonnenaufgang: 5:12 (03:12Z)
 Sonnenuntergang: 20:07 (18:07Z)
 Abenddämmerung: 21:12 (19:12Z)
 Höhe: 579m (1899ft)

Windy surface temperature/pressure (11.04.2021)



Summary

- Extension of cloud streets
- CAO