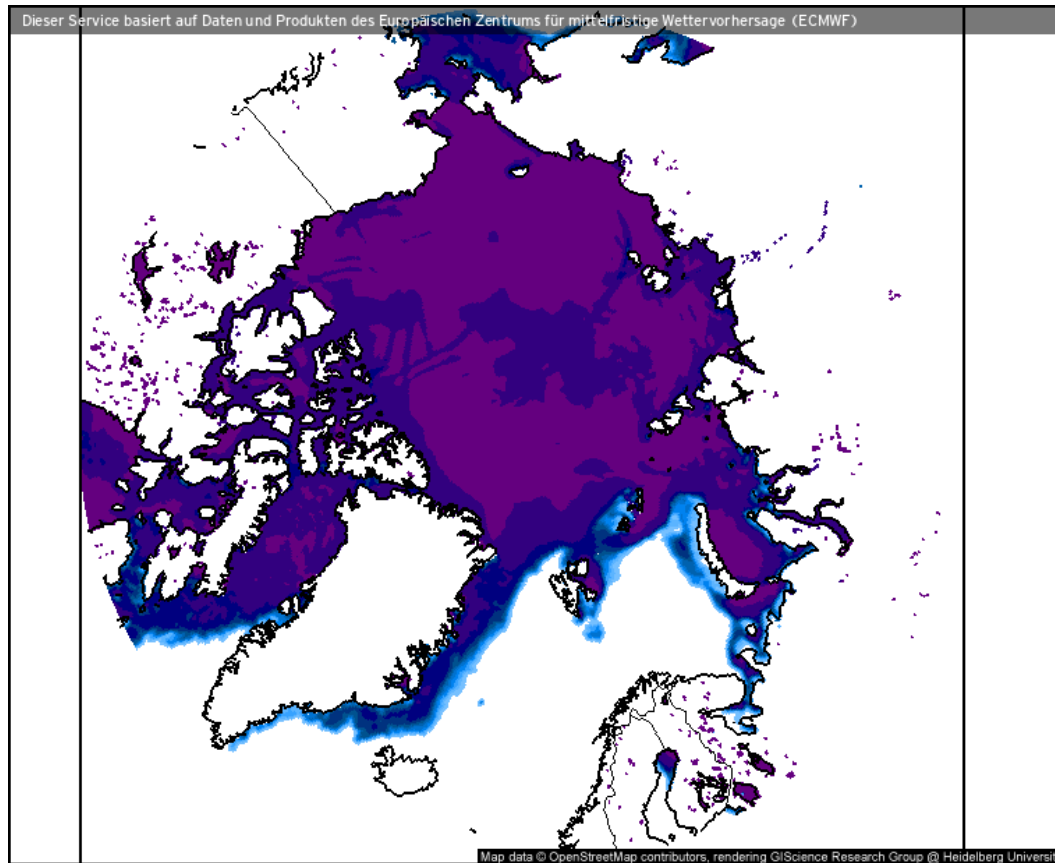


Weather observations

10.04.2021

Tim | Benjamin

Sea ice cover (10.04.2021 12 UTC)



- Still pronounced Whaler's Bay polynia
- No significant sea-ice change

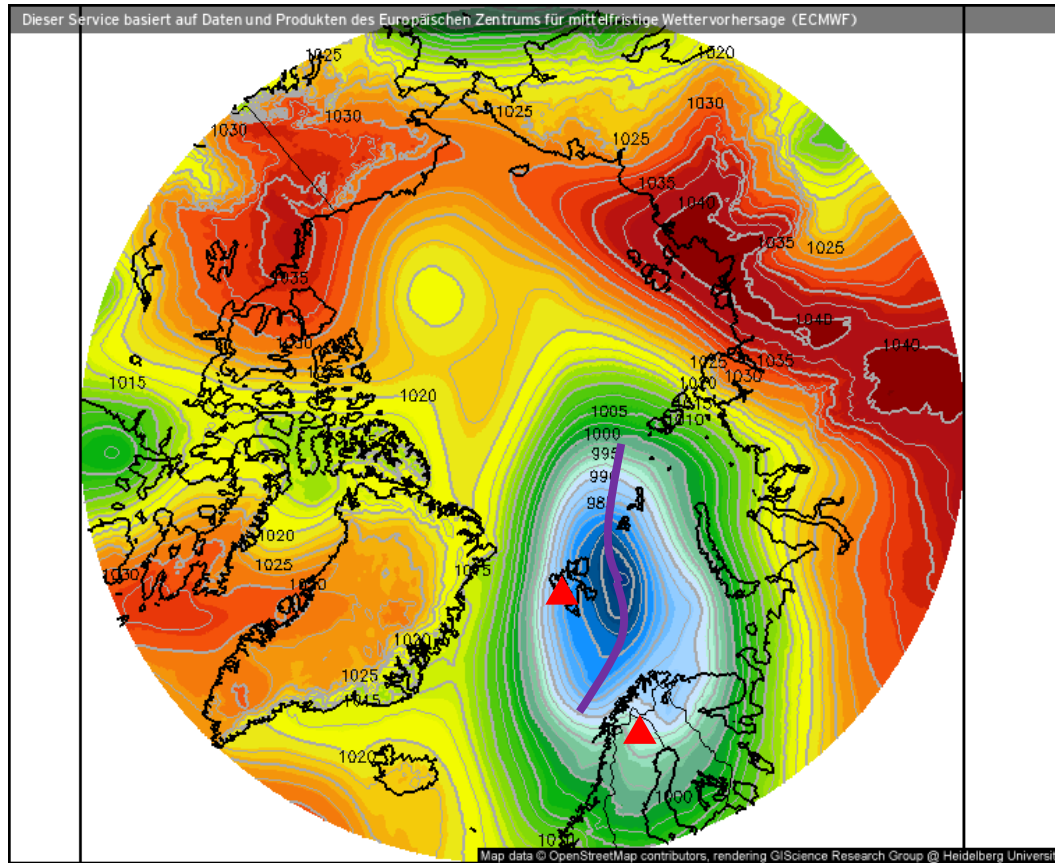
Eisbedeckung (Meere und Seen) (%)



Prognose für
Sa. 10.04.2021, 14:00 Uhr MESZ

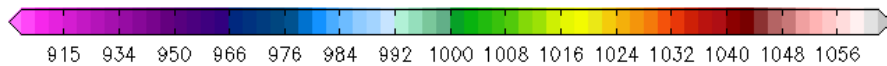
Nordpol
ECMWF/Global Euro HD vom 10.04.2021/12Z

Surface air pressure (10.04.2021 12 UTC)



- The low now lies directly East of Svalbard
- The secondary low vanished (or merged)

Luftdruck auf Meereshöhe (hPa)



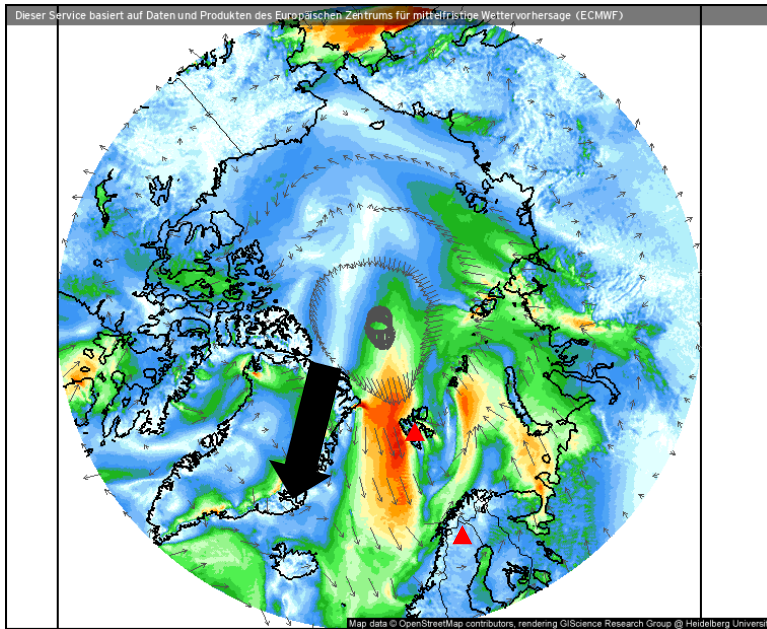
Prognose für

Sa. 10.04.2021, 14:00 Uhr MESZ

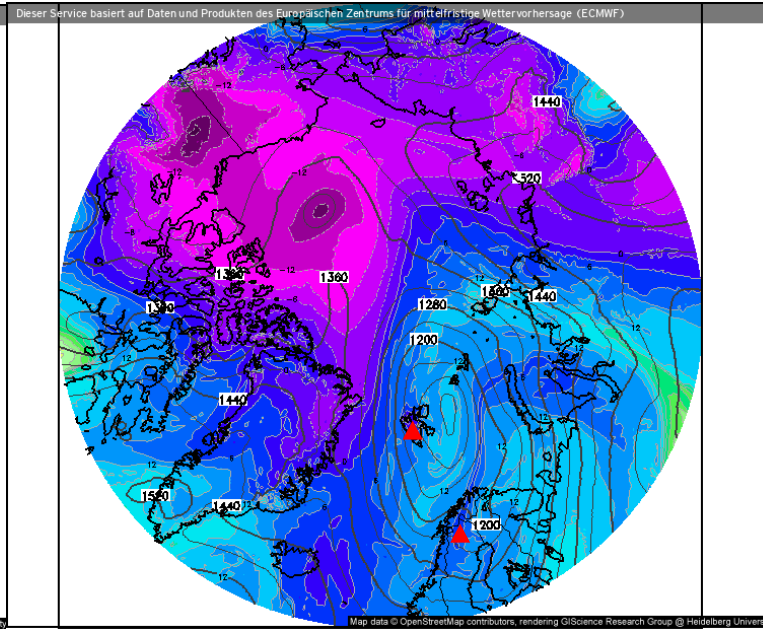
Nordpol
ECMWF/Global Euro HD vom 10.04.2021/12Z

Wind, θ_{eq} , z, IWV (10.04.2021 12 UTC)

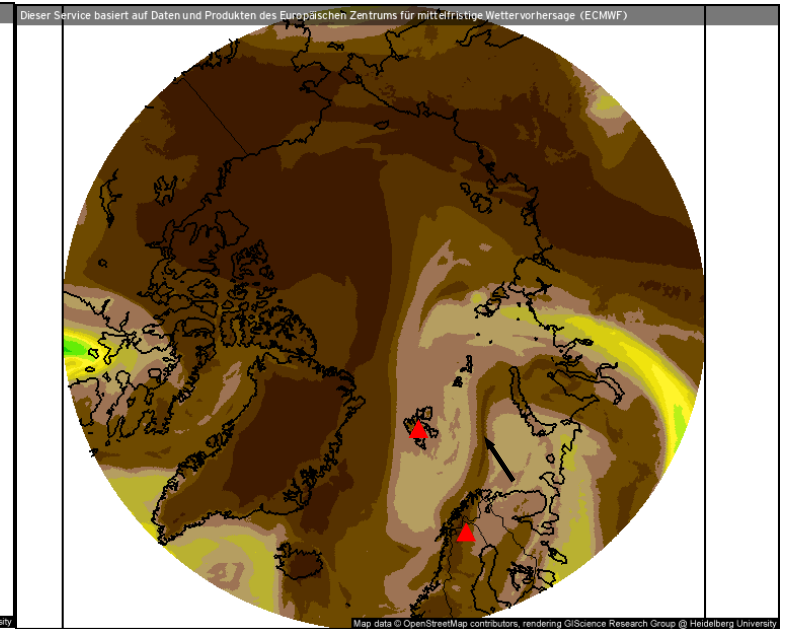
Wind speed and streamlines



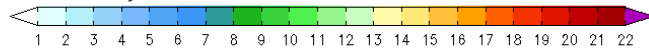
Theta-E and geopotential (850 hPa)



Precipitable water



Windrichtung und Windmittel (m/s)



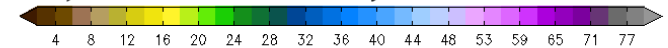
Prognose für Sa. 10.04.2021, 14:00 Uhr MESZ

Theta-E und Geopot, 850hPa (°C)



Prognose für Sa. 10.04.2021, 14:00 Uhr MESZ

Atmosphärisches Niederschlagswasser (mm)



Prognose für Sa. 10.04.2021, 14:00 Uhr MESZ

Nordpol
ECMWF/Global Euro HD vom 09.04.2021/12Z

ECMWF kachelmannwetter.com
WETTER HD

Nordpol
ECMWF/Global Euro HD vom 09.04.2021/12Z

ECMWF kachelmannwetter.com
WETTER HD

Nordpol
ECMWF/Global Euro HD vom 09.04.2021/12Z

ECMWF kachelmannwetter.com
WETTER HD

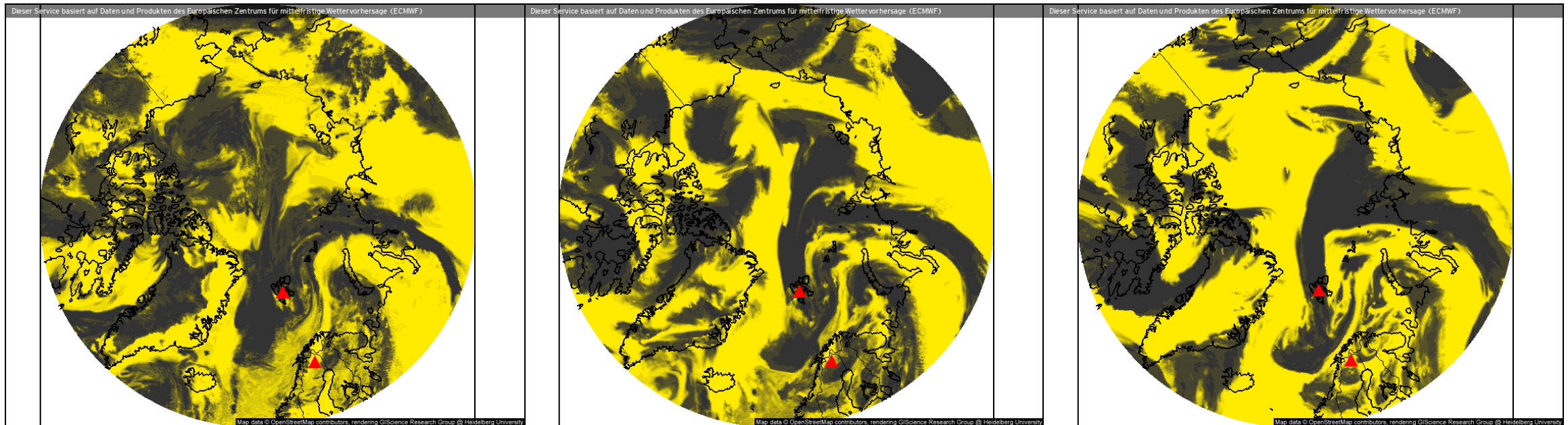
- Stronger winds over Fram Strait – shifted southwards

Clouds (10.04.2021 13 UTC)

Low-level clouds

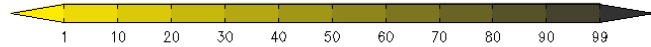
Mid-level clouds

High-level clouds



Bedeckungsgrad, niedrige Wolken (%)

Prognose für
Sa. 10.04.2021, 15:00 Uhr MESZ

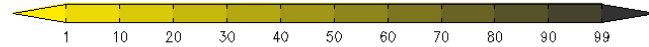


Nordpol
ECMWF/Global Euro HD vom 10.04.2021/12z

ECMWF kachelmannwetter.com
WETTER HD

Bedeckungsgrad, mittlere Wolken (%)

Prognose für
Sa. 10.04.2021, 15:00 Uhr MESZ

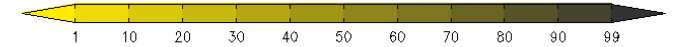


Nordpol
ECMWF/Global Euro HD vom 10.04.2021/12z

ECMWF kachelmannwetter.com
WETTER HD

Bedeckungsgrad, hohe Wolken (%)

Prognose für
Sa. 10.04.2021, 15:00 Uhr MESZ

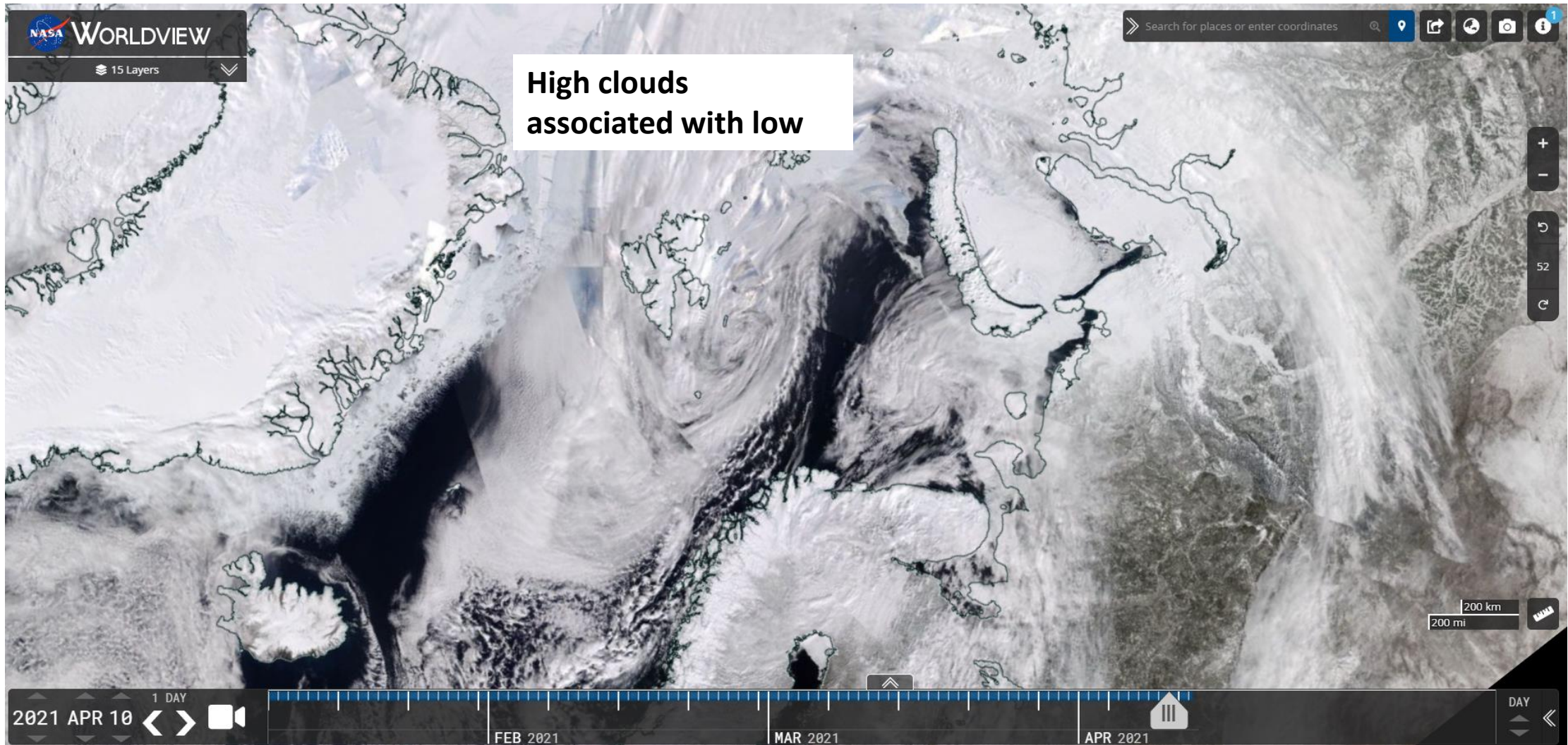


Nordpol
ECMWF/Global Euro HD vom 10.04.2021/12z

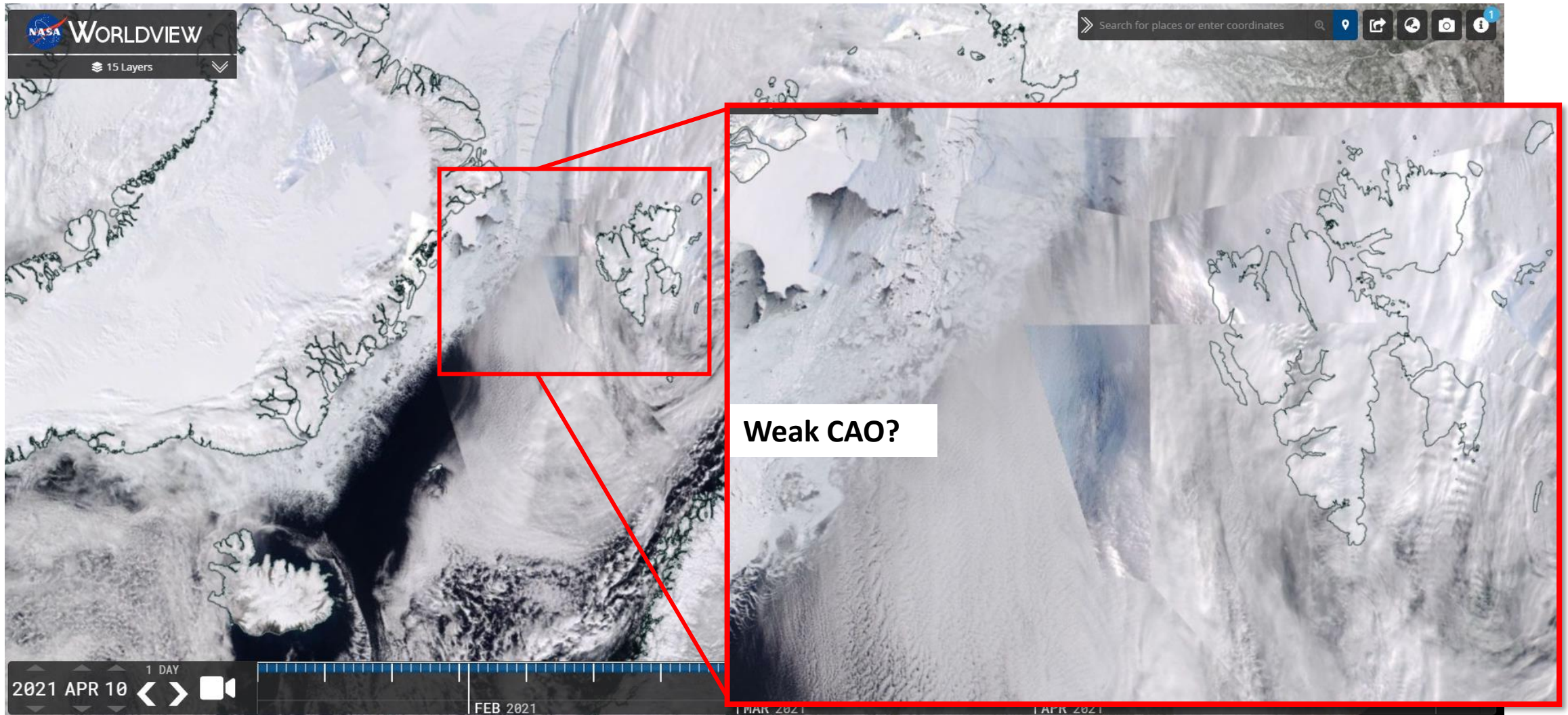
ECMWF kachelmannwetter.com
WETTER HD

- Kiruna partly cloudy
- LYR shows clouds in all altitudes

VIIRS (NOAA-20) (10.04.2021)



VIIRS (NOAA-20) (10.04.2021)



Airport situation: Longyearbyen (10.04.2021)

- Mostly sufficient visibility
- But many clouds, snow
- Flight might be difficult

Svalbard Airport. Longyear
 Longyearbyen, Norway
 latitude: 78-15N, longitude: 015-28E,
 elevation: 2 m

Current weather observation
 The report was made **29** minutes ago, at **11:50** UTC

Wind **13** kt from the **North/Northeast**

Temperature **-3°C**

Humidity **68%**

Pressure **982** hPa

Visibility **10** km or more

Few clouds at a height of **1500** ft
Scattered clouds at a height of **2000** ft
Broken clouds at a height of **3000** ft

light snow

[Change units](#)

Time: 14:19 (12:19 UTC)

Forecast

Forecast valid from 10 at 12 UTC to 11 at 12 UTC

Wind **18** kt from the **North/Northwest**

Visibility **10** km or more

Few clouds at a height of **1500** ft
Broken clouds at a height of **3000** ft

Probability **30%** :

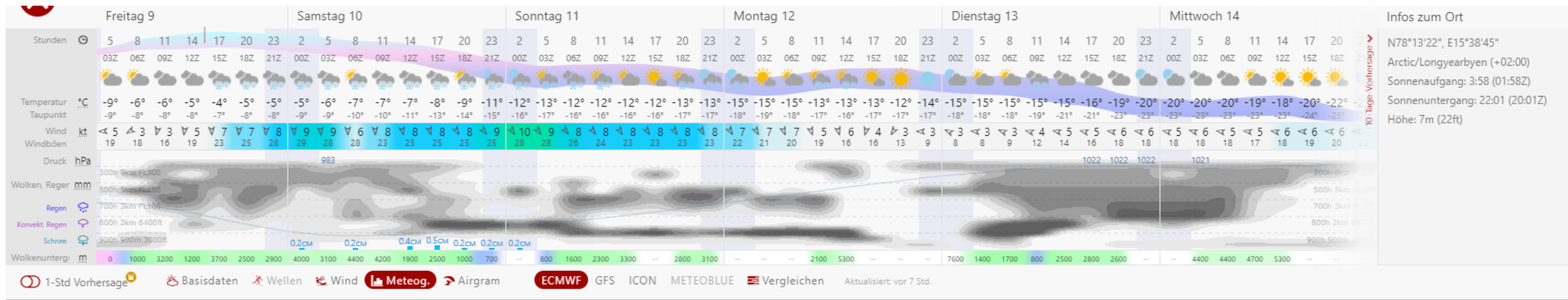
Temporary
 from 10 at 12 UTC to 11 at 06 UTC

Wind **8** kt from the **North**

Visibility: **3000** m
 at a height of **800** ft

light snow

TAF: ENSB 1012/1112 34018KT 999
 FEW015 BKN030 PROB30 TEMPO
 1012/1106 01008KT 3000 -SN VV008



Infos zum Ort
 N78°13'22", E15°38'45"
 Arctic/Longyearbyen (+02:00)
 Sonnenaufgang: 3:58 (01:58Z)
 Sonnenuntergang: 22:01 (20:01Z)
 Höhe: 7m (22ft)

Airport situation: Kiruna (10.04.2021)

- Perfect conditions

Kiruna Airport
 Kiruna, Sweden
 latitude: 67-49N, longitude: 020-20E,
 elevation: 452 m

Current weather observation
 The report was made 29 minutes ago, at 11:50 UTC

Wind 9 kt from the West/Northwest

Temperature -2°C

Humidity 43%

Pressure 990 hPa

Visibility 10 km or more

[Change units](#)

Time: 14:19 (12:19 UTC)

Forecast
 The report was made 3 hours and 49 minutes ago, at 08:30 UTC

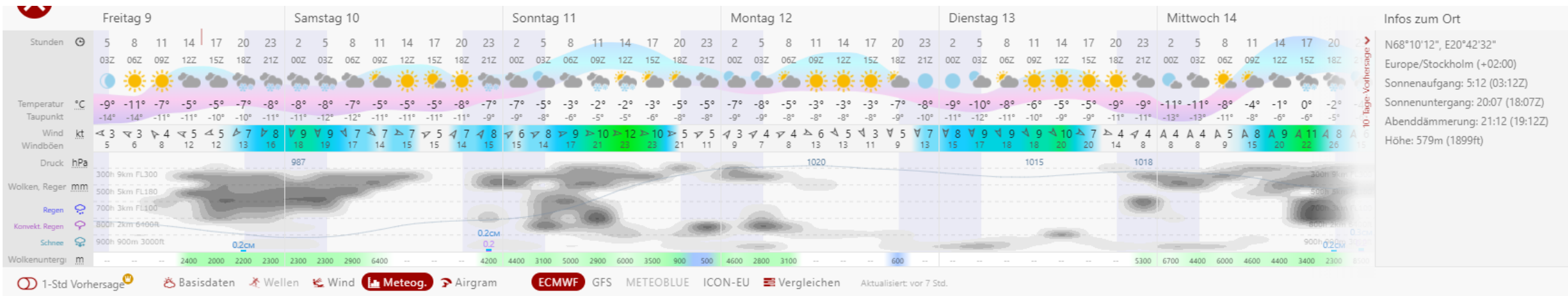
Forecast valid from 10 at 09 UTC to 10 at 12 UTC

Wind 10 kt from the North

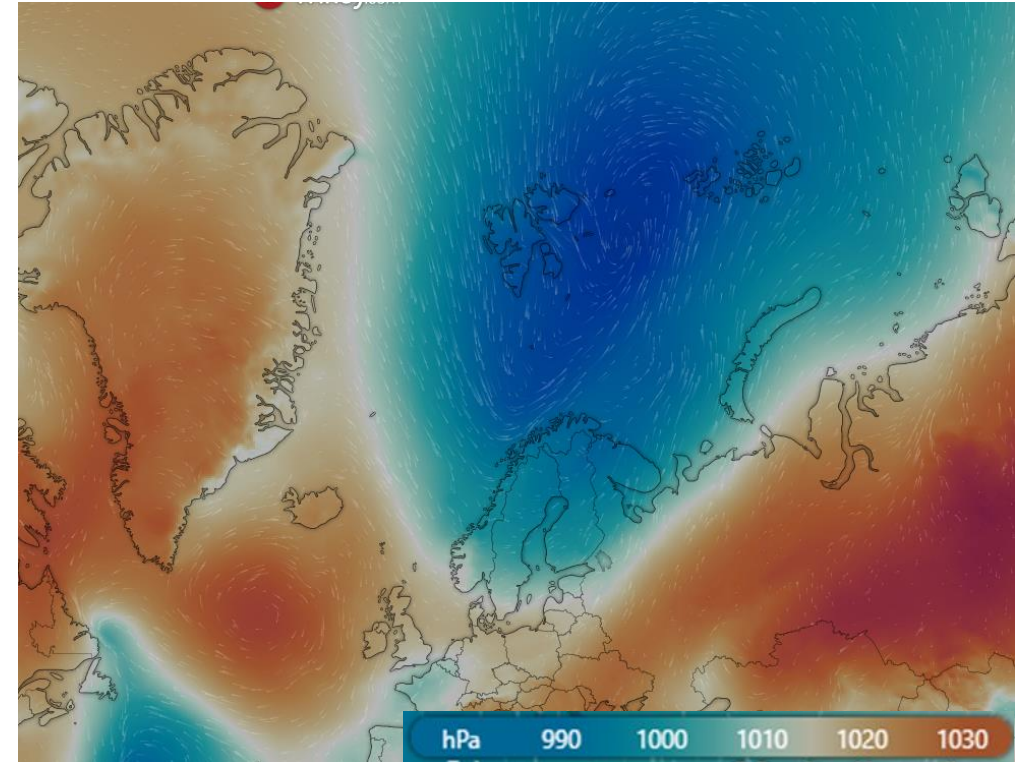
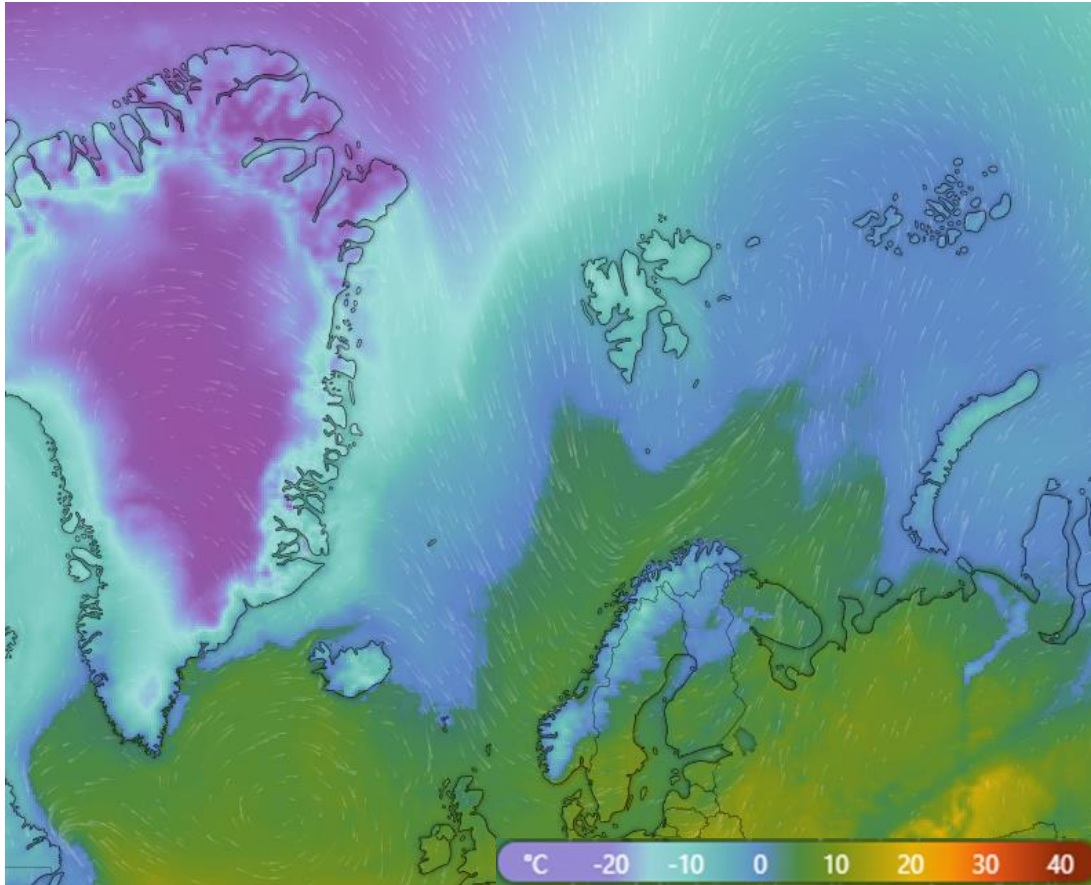
Visibility 10 km or more

no clouds below 1500 m and no cumulonimbus

TAF: ESNQ 100830Z 1009/1012 35010KT CAVOK



Windy surface temperature/pressure (10.04.2021)



Summary

- Stronger CAO
- Slightly visible cloud streets