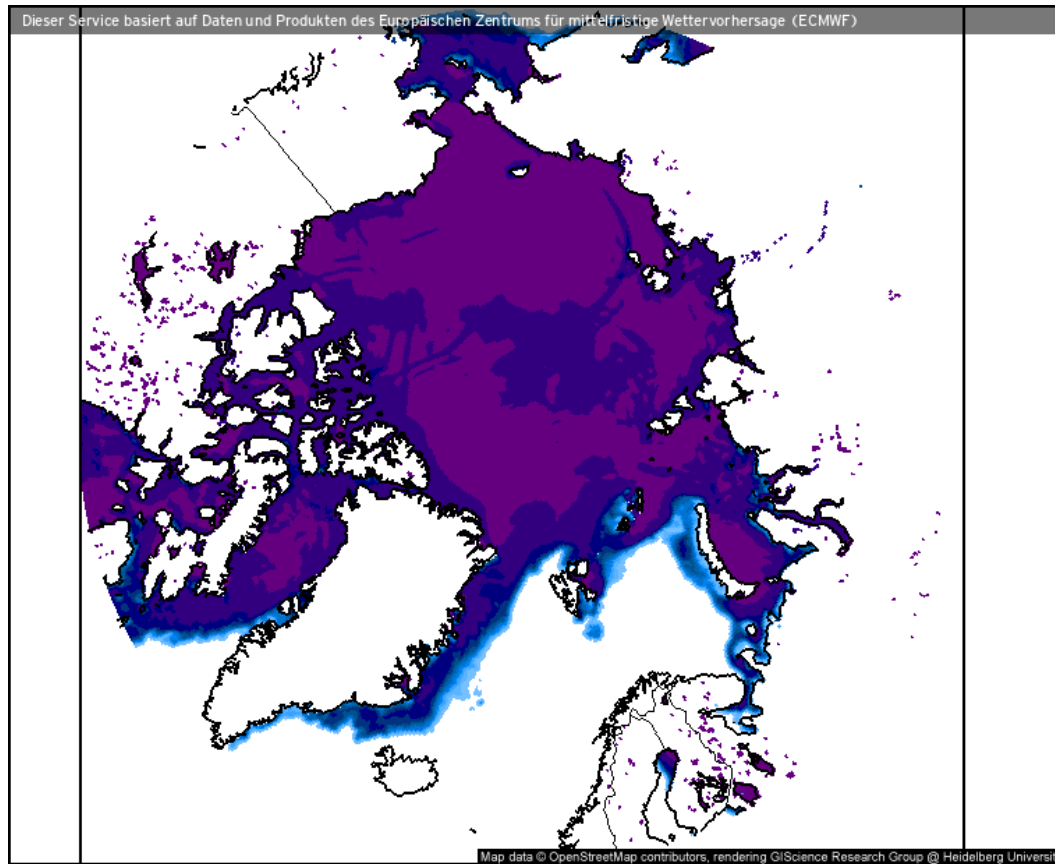


# Weather observations

## 09.04.2021

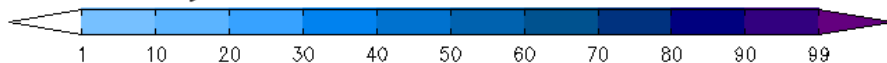
Tim | Benjamin

# Sea ice cover (09.04.2021 12 UTC)



- Still pronounced Whaler's Bay polynia
- No significant sea-ice change

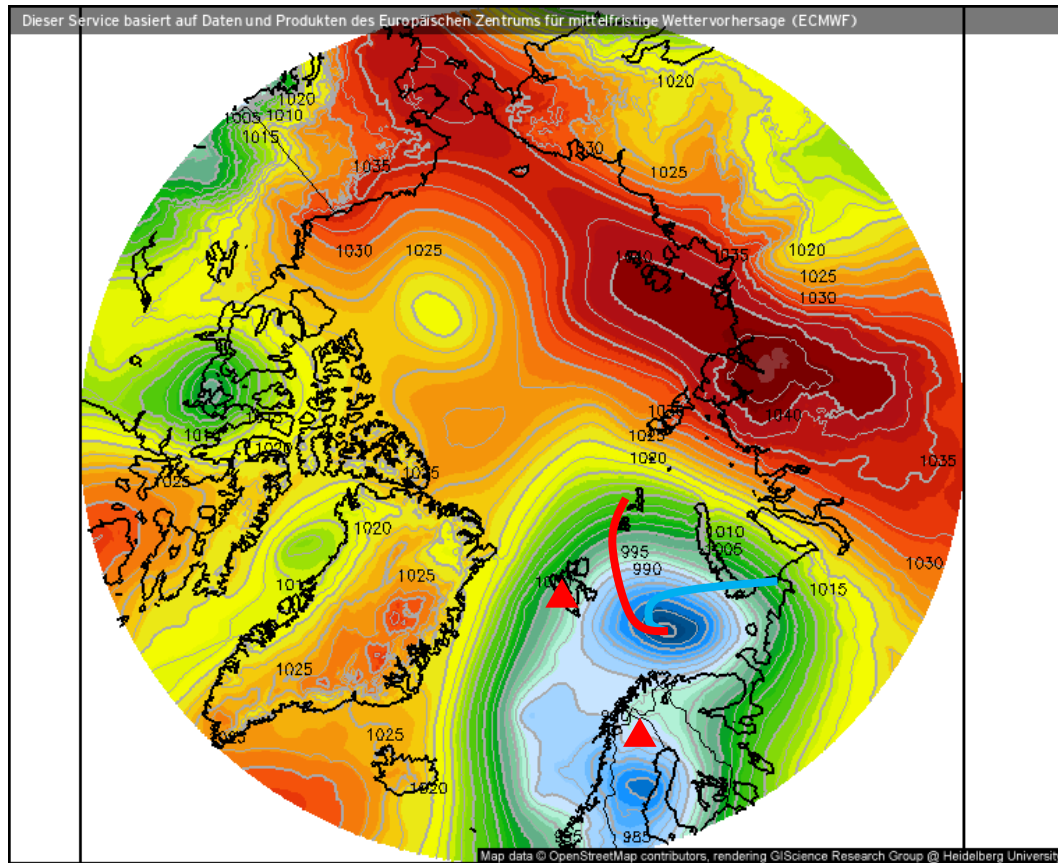
Eisbedeckung (Meere und Seen) (%)



Prognose für  
Fr. 09.04.2021, 14:00 Uhr MESZ

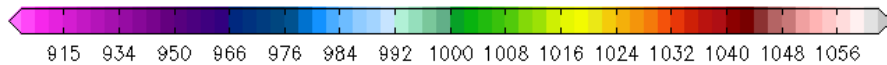
Nordpol  
ECMWF/Global Euro HD vom 09.04.2021/12Z

# Surface air pressure (09.04.2021 12 UTC)



- Low is extremely persistent, now again S-E of Svalbard, towards Barents Sea
- Secondary low over Sweden
- High over Greenland weakens

Luftdruck auf Meereshöhe (hPa)

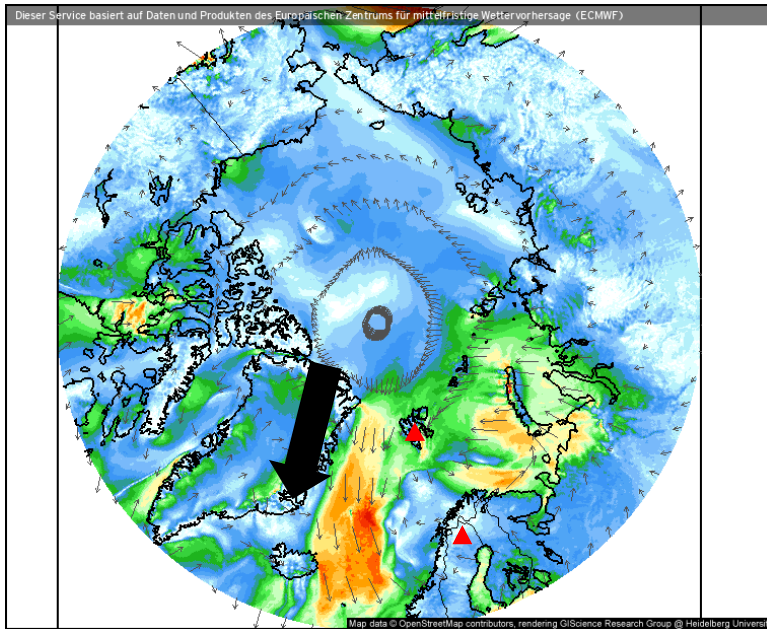


Prognose für  
Fr. 09.04.2021, 14:00 Uhr MESZ

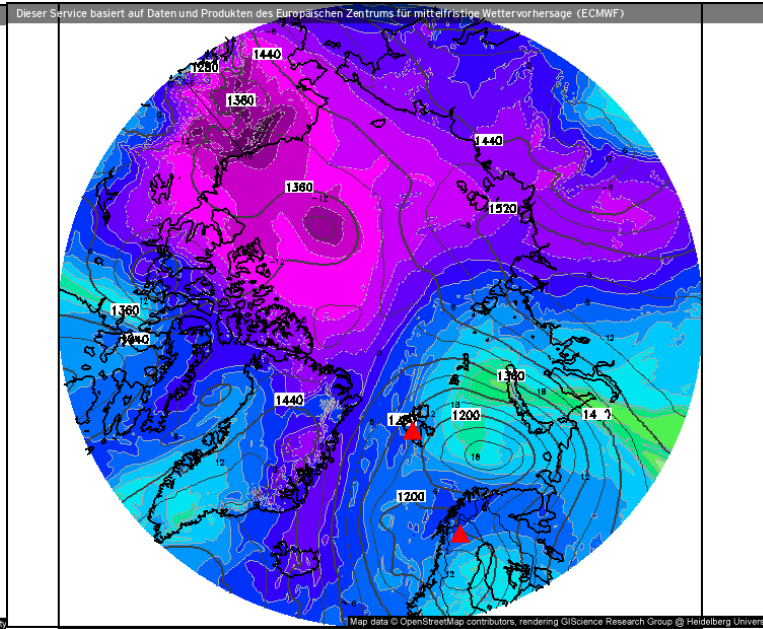
Nordpol  
ECMWF/Global Euro HD vom 09.04.2021/12Z

# Wind, $\theta_{eq}$ , z, IWV (09.04.2021 12 UTC)

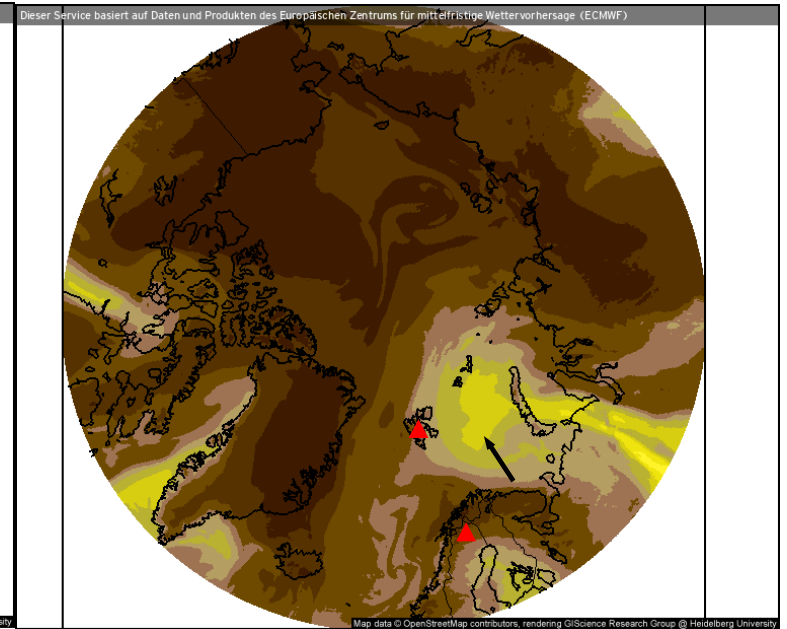
## Wind speed and streamlines



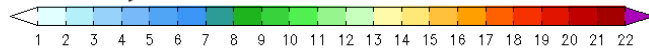
## Theta-E and geopotential (850 hPa)



## Precipitable water

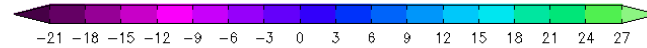


Windrichtung und Windmittel (m/s)



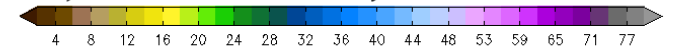
Prognose für Fr. 09.04.2021, 14:00 Uhr MESZ

Theta-E und Geopot, 850hPa (°C)



Prognose für Fr. 09.04.2021, 14:00 Uhr MESZ

Atmosphärisches Niederschlagswasser (mm)



Prognose für Fr. 09.04.2021, 14:00 Uhr MESZ

Nordpol  
ECMWF/Global Euro HD vom 09.04.2021/12z

ECMWF kachelmannwetter.com  
WETTER HD

Nordpol  
ECMWF/Global Euro HD vom 09.04.2021/12z

ECMWF kachelmannwetter.com  
WETTER HD

Nordpol  
ECMWF/Global Euro HD vom 09.04.2021/12z

ECMWF kachelmannwetter.com  
WETTER HD

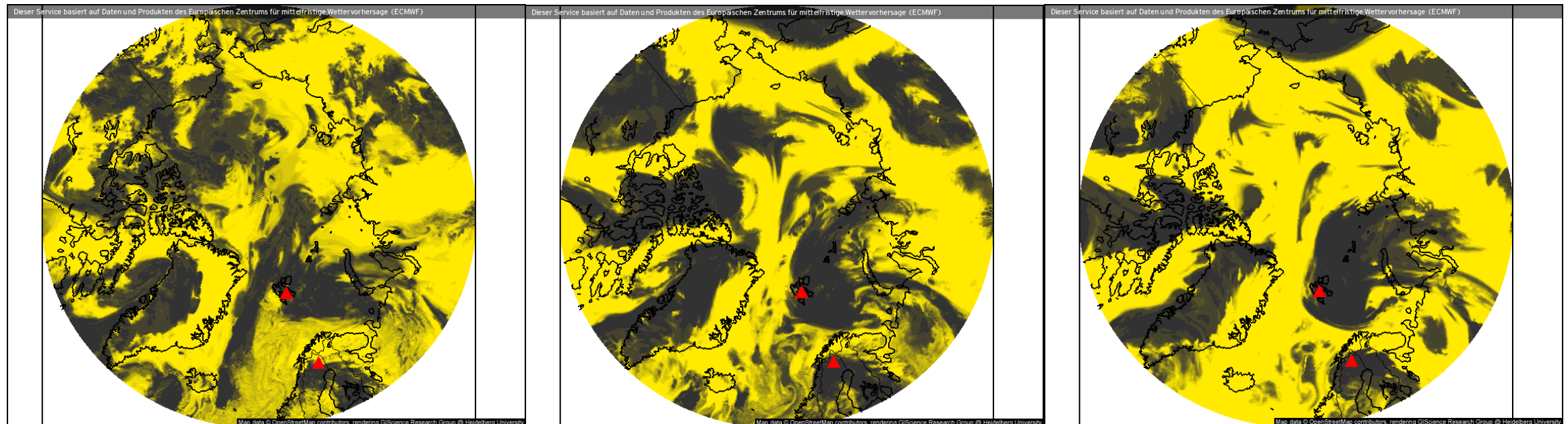
- Weaker winds over Fram Strait – shifted southwards
- Stronger intrusion of moist air into Barent Sea – reaching Svalbard

# Clouds (09.04.2021 13 UTC)

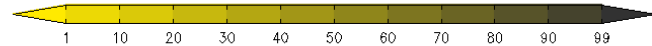
## Low-level clouds

## Mid-level clouds

## High-level clouds

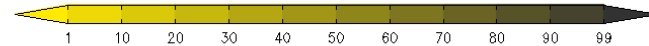


Bedeckungsgrad, niedrige Wolken (%)



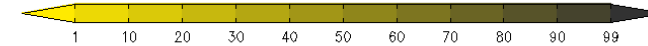
Prognose für Fr. 09.04.2021, 15:00 Uhr MESZ

Bedeckungsgrad, mittlere Wolken (%)



Prognose für Fr. 09.04.2021, 15:00 Uhr MESZ

Bedeckungsgrad, hohe Wolken (%)



Prognose für Fr. 09.04.2021, 15:00 Uhr MESZ

Nordpol  
ECMWF/Global Euro HD vom 09.04.2021/12Z

ECMWF kachelmannwetter.com  
WETTER HD

Nordpol  
ECMWF/Global Euro HD vom 09.04.2021/12Z

ECMWF kachelmannwetter.com  
WETTER HD

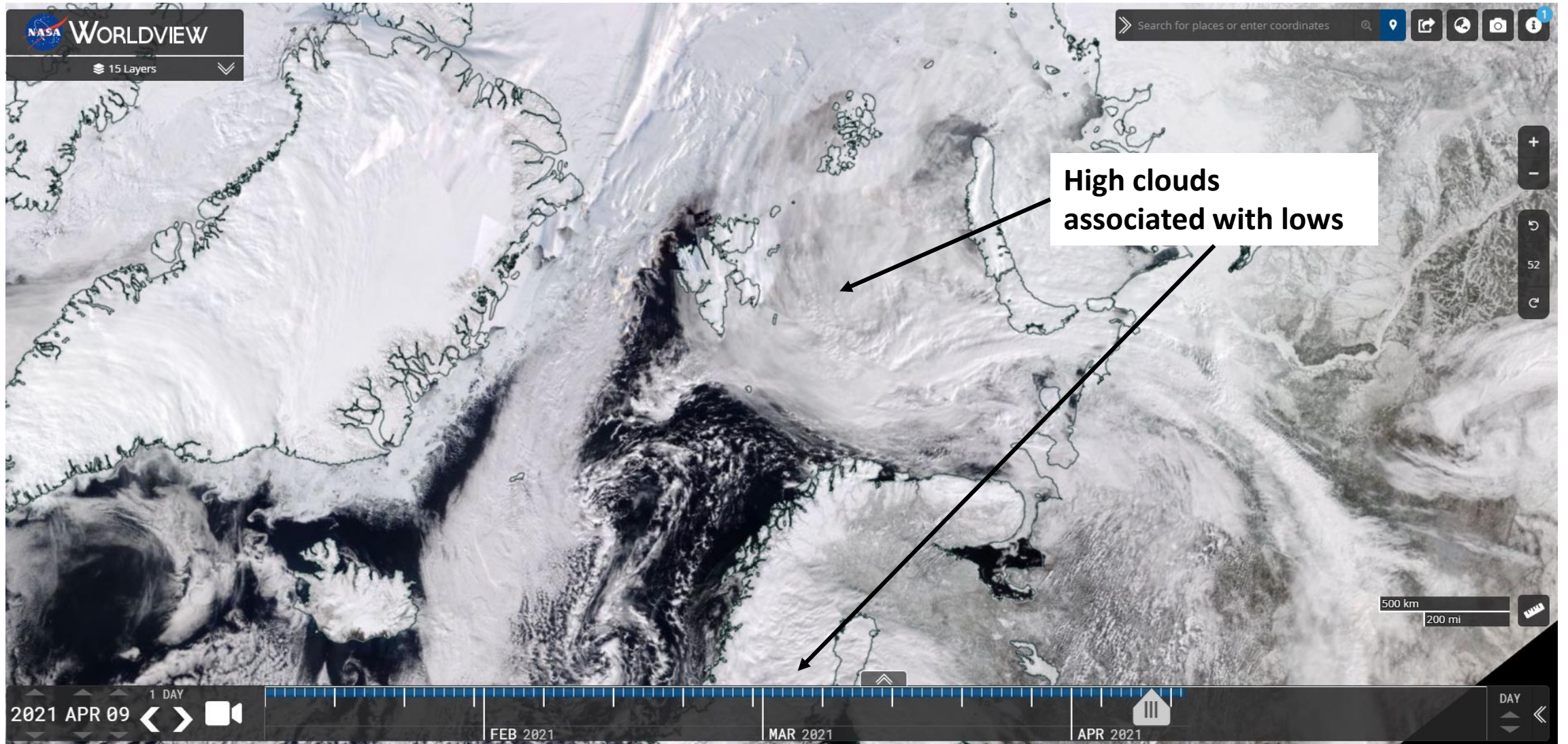
Nordpol  
ECMWF/Global Euro HD vom 09.04.2021/12Z

ECMWF kachelmannwetter.com  
WETTER HD

- The 2 lows (Barents Sea, Sweden) bring clouds over LYR/KIR on all altitudes

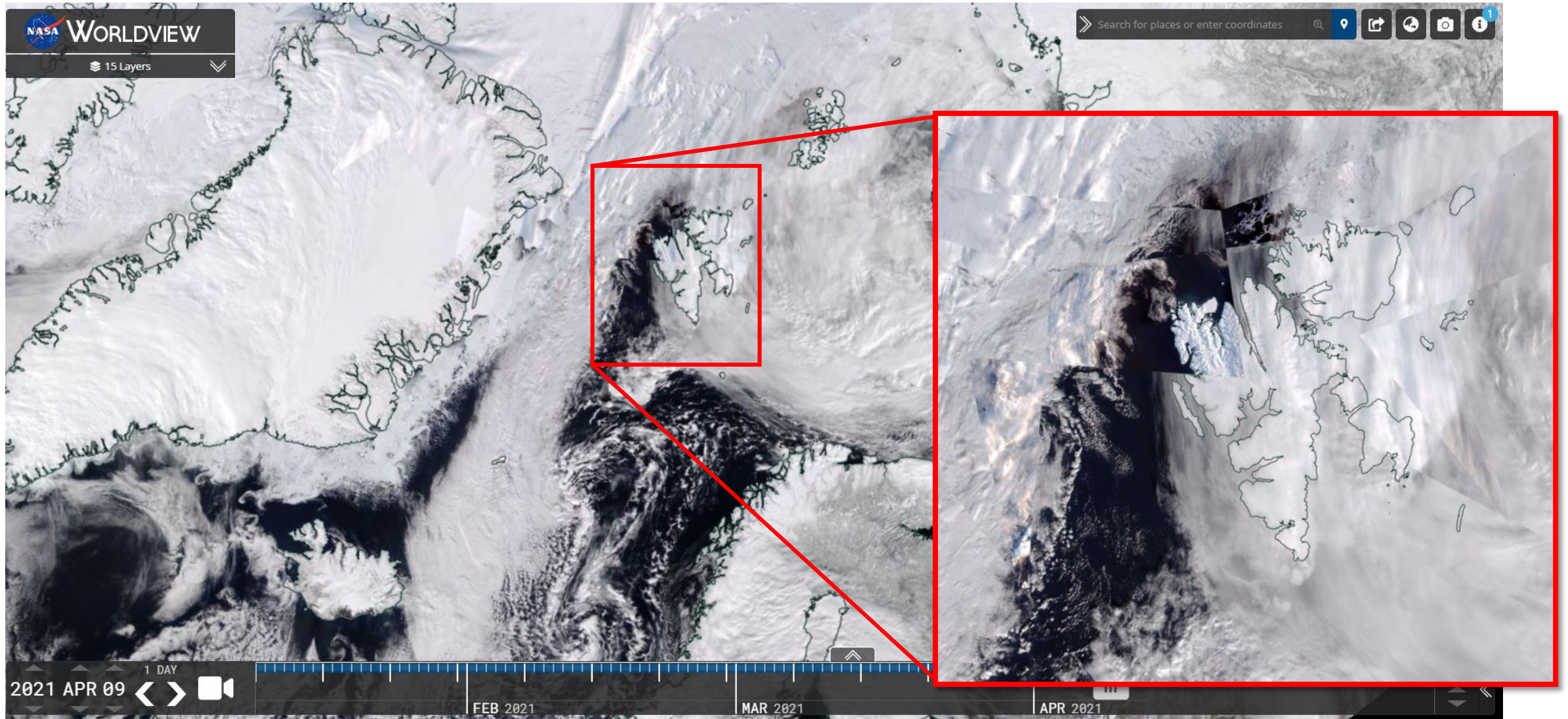


# VIIRS (NOAA-20) (09.04.2021)





# VIIRS (NOAA-20) (09.04.2021)



# Airport situation: Longyearbyen (09.04.2021)



- Baseline: high visibility, but temporarily often interrupted down to 2 km
- Temporarily strong winds, clouds and snow
- Flight possible, but landing might be risky

Svalbard Airport, Longyear  
 Longyearbyen, Norway  
 latitude: 78-15N, longitude: 015-28E, elevation: 2 m

**Current weather observation**  
 The report was made 10 minutes ago, at 12:50 UTC

Wind 9 kt from the Northeast  
 Temperature 0°C  
 Humidity 59%  
 Pressure 995 hPa  
 Visibility 10 km or more

Scattered clouds at a height of 3500 ft  
 Broken clouds at a height of 4500 ft

[Change units](#)

Time: 15:00 (13:00 UTC)

**Forecast**  
 Forecast valid from 09 at 12 UTC to 10 at 12 UTC

Wind 9 kt from the North/Northeast  
 Visibility 10 km or more  
 Few clouds at a height of 2000 ft  
 Broken clouds at a height of 3000 ft

Temporary  
 from 09 at 12 UTC to 09 at 18 UTC

Wind 20 kt from the North/Northeast  
 Low drifting snow

Temporary  
 from 09 at 18 UTC to 09 at 24 UTC

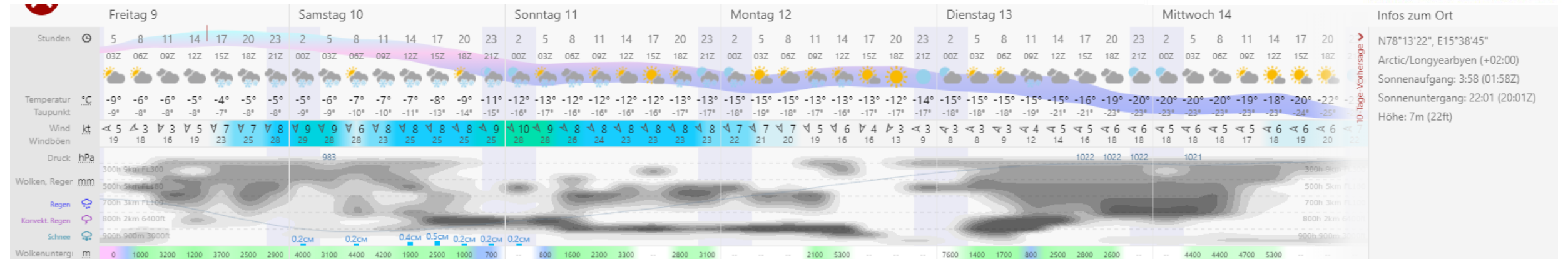
Wind 25 kt from the North/Northeast with gusts up to 35 kt  
 Visibility 4000 m  
 at a height of 1200 ft  
 light snow, Blowing snow

Temporary  
 from 10 at 00 UTC to 10 at 12 UTC

Wind 20 kt from the North/Northwest  
 Visibility 2000 m  
 at a height of 800 ft  
 snow, Blowing snow

METAR: ENSB 091250Z 05009KT 9999  
 SCT035 BKN045 M00/M07 Q0995 RMK  
 WIND 1400FT 04013KT

TAF: ENSB 0912/1012 03009KT 9999  
 FEW020 BKN030 TEMPO 0912/0918  
 03020KT DRSN TEMPO 0918/0924  
 03025G35KT 4000 -SN BLSN VV012 TEMPO  
 1000/1012 34020KT 2000 SN BLSN VV008



Infos zum Ort  
 N78°13'22", E15°38'45"  
 Arctic/Longyearbyen (+02:00)  
 Sonnenaufgang: 3:58 (01:58Z)  
 Sonnenuntergang: 22:01 (20:01Z)  
 Höhe: 7m (22ft)



# Airport situation: Kiruna (09.04.2021)

- Also fluctuating conditions, with changing visibility between 10 and 2 km and light snow

Time: 15:00 (13:00 UTC)

**Kiruna Airport**

Kiruna, Sweden  
 latitude: 67-49N, longitude: 020-20E,  
 elevation: 452 m

**Current weather observation**

The report was made 10 minutes ago, at 12:50 UTC

Wind 7 kt from the **East/Southeast**

Temperature **-3°C**

Humidity **58%**

Pressure **987 hPa**

Visibility 10 km or more

**Broken clouds at a height of 4700 ft**

[Change units](#)

**Forecast**

The report was made 1 hour and 30 minutes ago, at 11:30 UTC

Forecast valid from 09 at 12 UTC to 09 at 17 UTC

Wind 6 kt from the **Northeast**

Visibility 10 km or more

no clouds below 1500 m and no cumulonimbus

*Becoming*

from 09 at 13 UTC to 09 at 15 UTC

Visibility: **2000 m**

at a height of **1000 ft**

**snow**

*Temporary*

from 09 at 15 UTC to 09 at 17 UTC

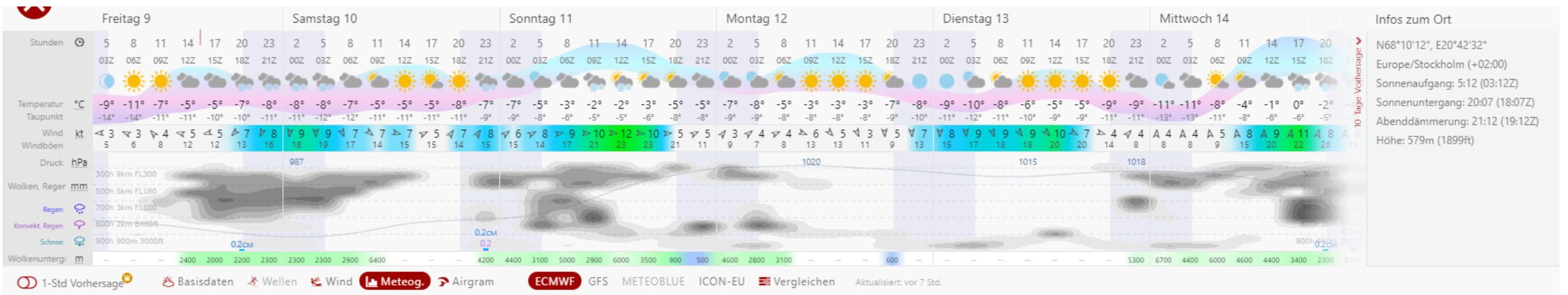
Visibility: **5000 m**

at a height of **1500 ft**

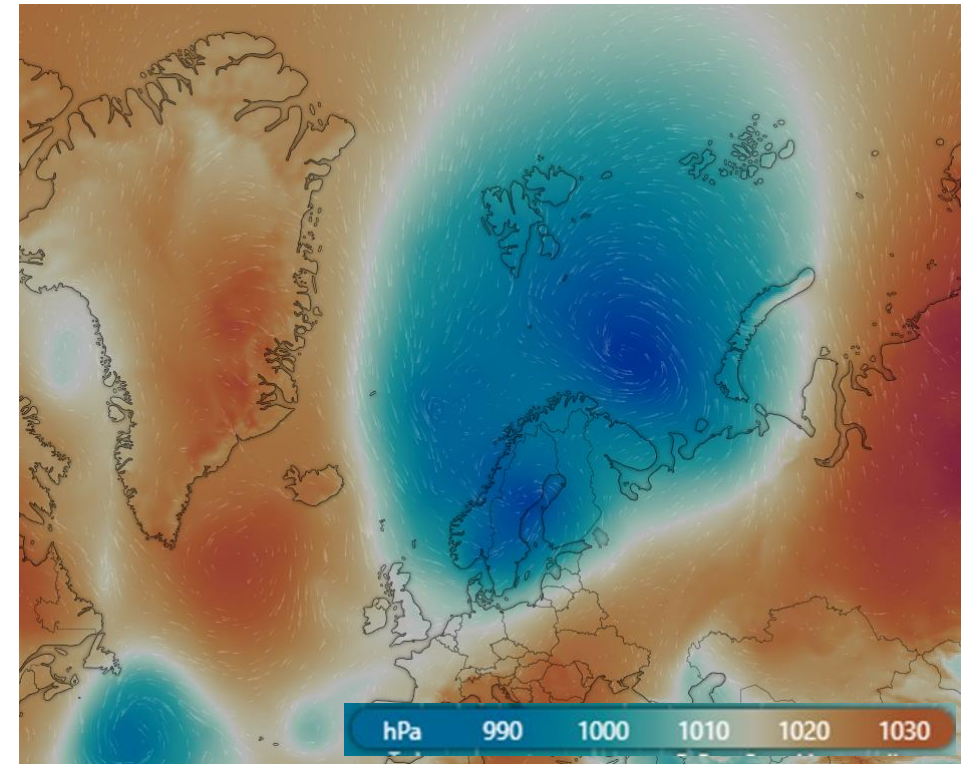
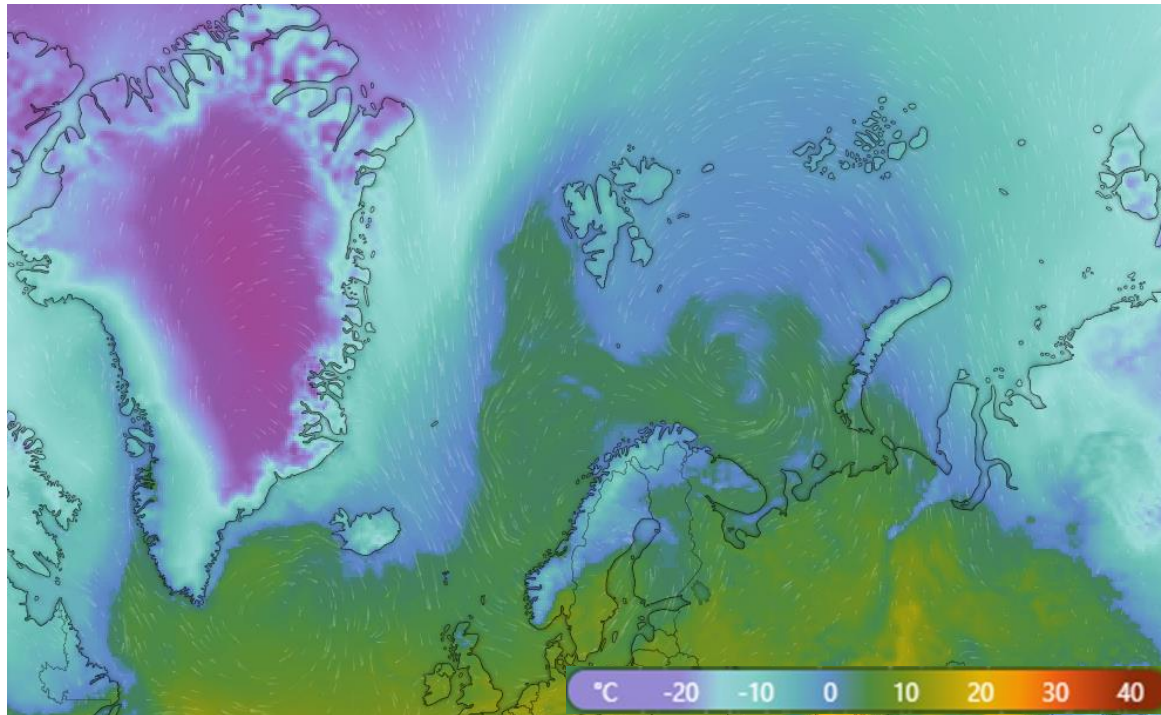
**light snow**

**TAF:** ESNQ 091130Z 0912/0917 05006KT  
 CAVOK BECMG 0913/0915 2000 SN VV010  
 TEMPO 0915/0917 5000 -SN VV015

**METAR:** ESNQ 091250Z 11007KT 9999  
 BKN047 M03/M10 Q0987



# Windy surface temperature/pressure (09.04.2021)



## Summary

- Lower CAO