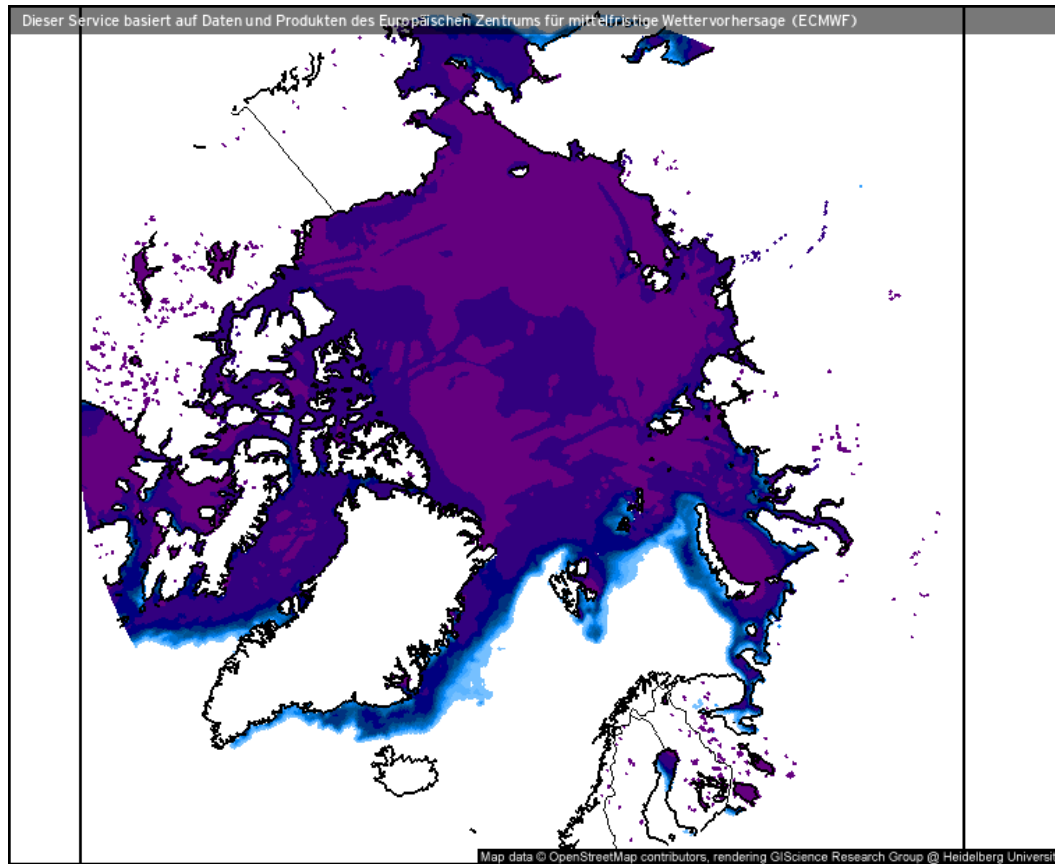


Weather observations

07.04.2021

Tim | Benjamin

Sea ice cover (07.04.2021 12 UTC)



- Still pronounced Whaler's Bay polynia
- Sea ice cover East of Greenland slightly decreased

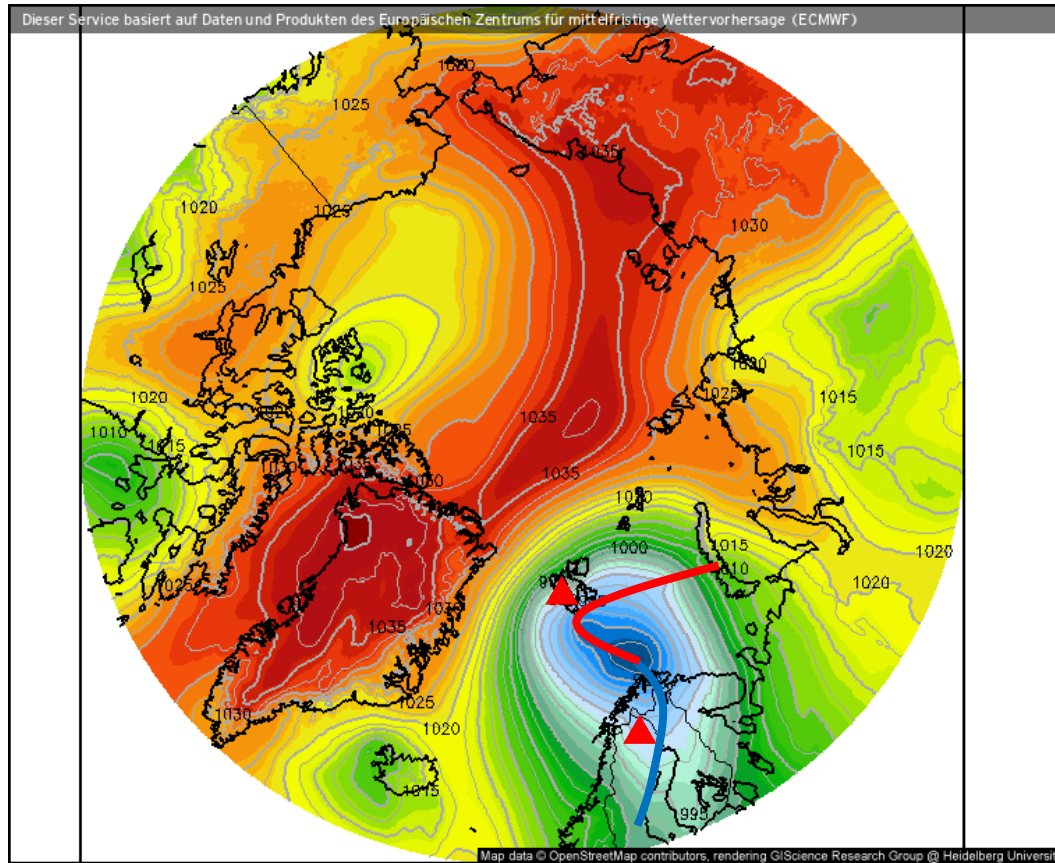
Eisbedeckung (Meere und Seen) (%)



Prognose für
Mi. 07.04.2021, 14:00 Uhr MESZ

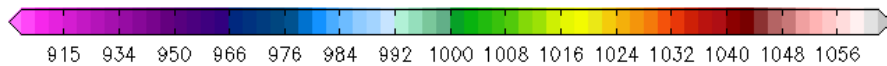
Nordpol
ECMWF/Global Euro HD vom 07.04.2021/12Z

Surface air pressure (07.04.2021 12 UTC)



- Low further weakens
- Low shifts towards Svalbard
- High over Greenland strengthens

Luftdruck auf Meereshöhe (hPa)



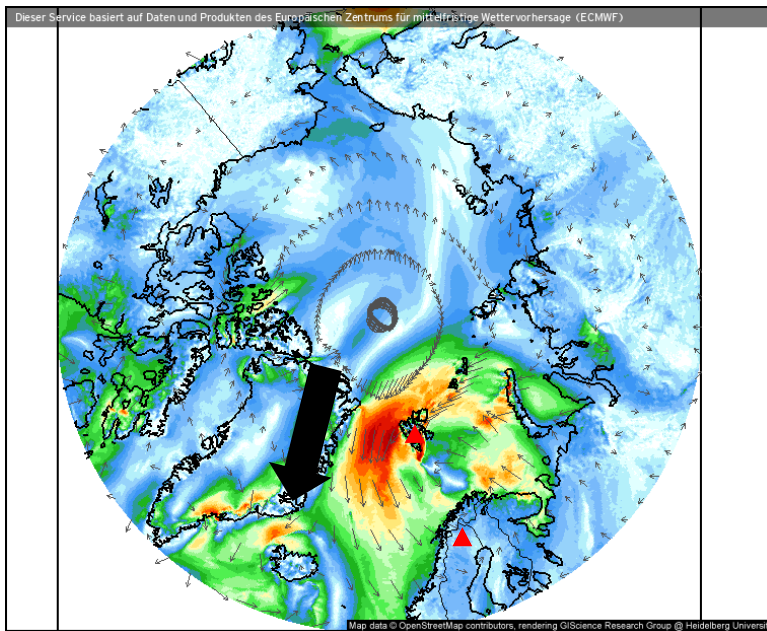
Prognose für

Mi. 07.04.2021, 14:00 Uhr MESZ

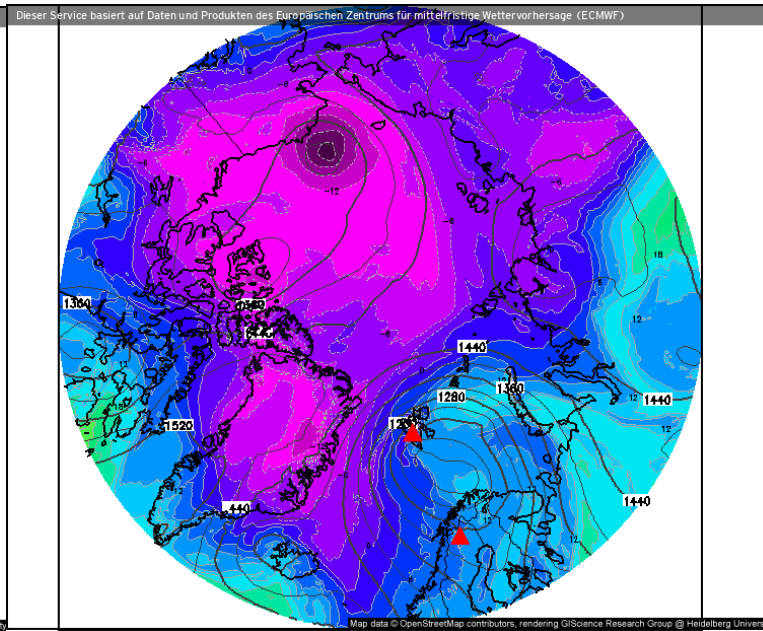
Nordpol
ECMWF/Global Euro HD vom 07.04.2021/12Z

Wind, θ_{eq} , z, IWV (07.04.2021 12 UTC)

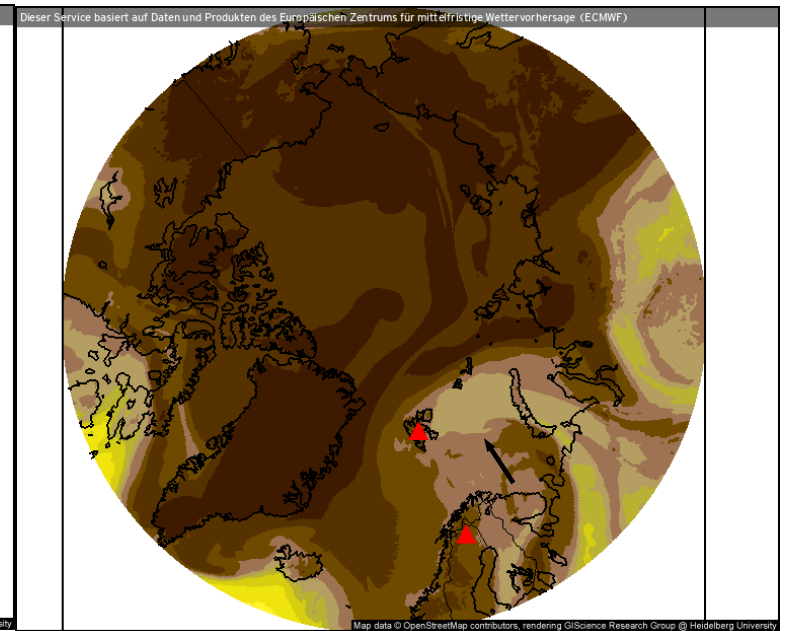
Wind speed and streamlines



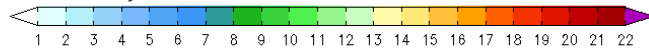
Theta-E and geopotential (850 hPa)



Precipitable water



Windrichtung und Windmittel (m/s)



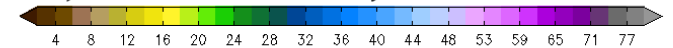
Prognose für Mi. 07.04.2021, 14:00 Uhr MESZ

Theta-E und Geopot, 850hPa (°C)



Prognose für Mi. 07.04.2021, 14:00 Uhr MESZ

Atmosphärisches Niederschlagswasser (mm)



Prognose für Mi. 07.04.2021, 14:00 Uhr MESZ

Nordpol
ECMWF/Global Euro HD vom 07.04.2021/12z

ECMWF kachelmannwetter.com
WETTER HD

Nordpol
ECMWF/Global Euro HD vom 07.04.2021/12z

ECMWF kachelmannwetter.com
WETTER HD

Nordpol
ECMWF/Global Euro HD vom 07.04.2021/12z

ECMWF kachelmannwetter.com
WETTER HD

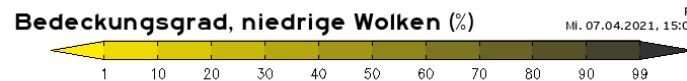
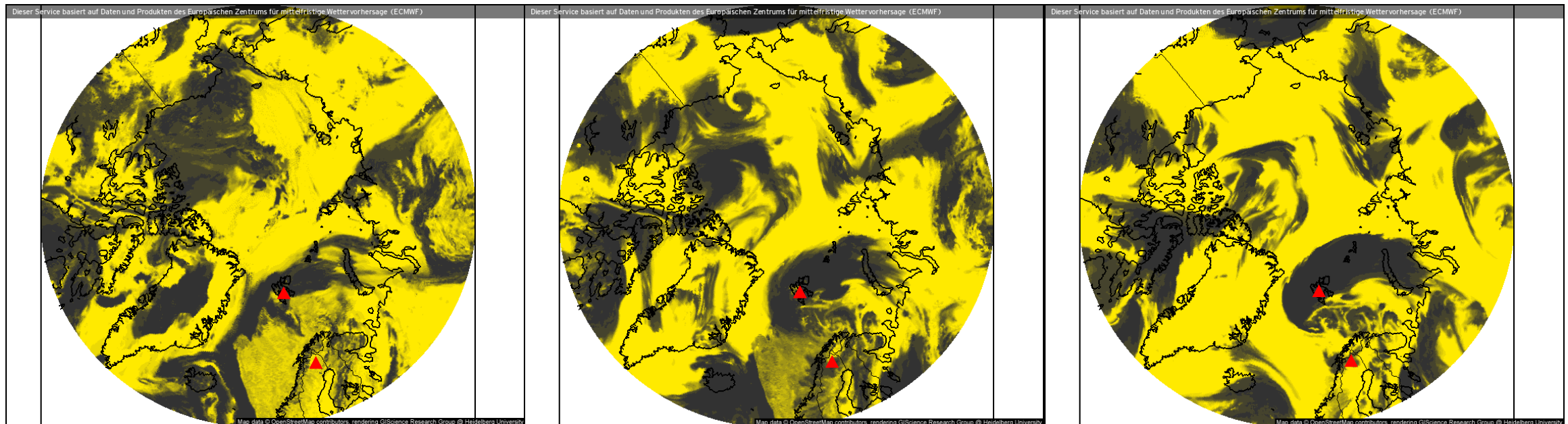
- Stronger winds over Fram Strait
- Lower intrusion of moist air into Barent Sea – reaching Svalbard

Clouds (07.04.2021 13 UTC)

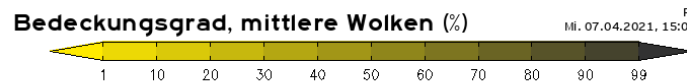
Low-level clouds

Mid-level clouds

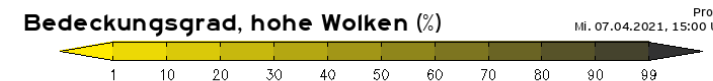
High-level clouds



Prognose für
Mi., 07.04.2021, 15:00 Uhr MESZ



Prognose für
Mi., 07.04.2021, 15:00 Uhr MESZ



Prognose für
Mi., 07.04.2021, 15:00 Uhr MESZ

Nordpol
ECMWF/Global Euro HD vom 07.04.2021/12z

ECMWF kachelmannwetter.com
WETTER HD

Nordpol
ECMWF/Global Euro HD vom 07.04.2021/12z

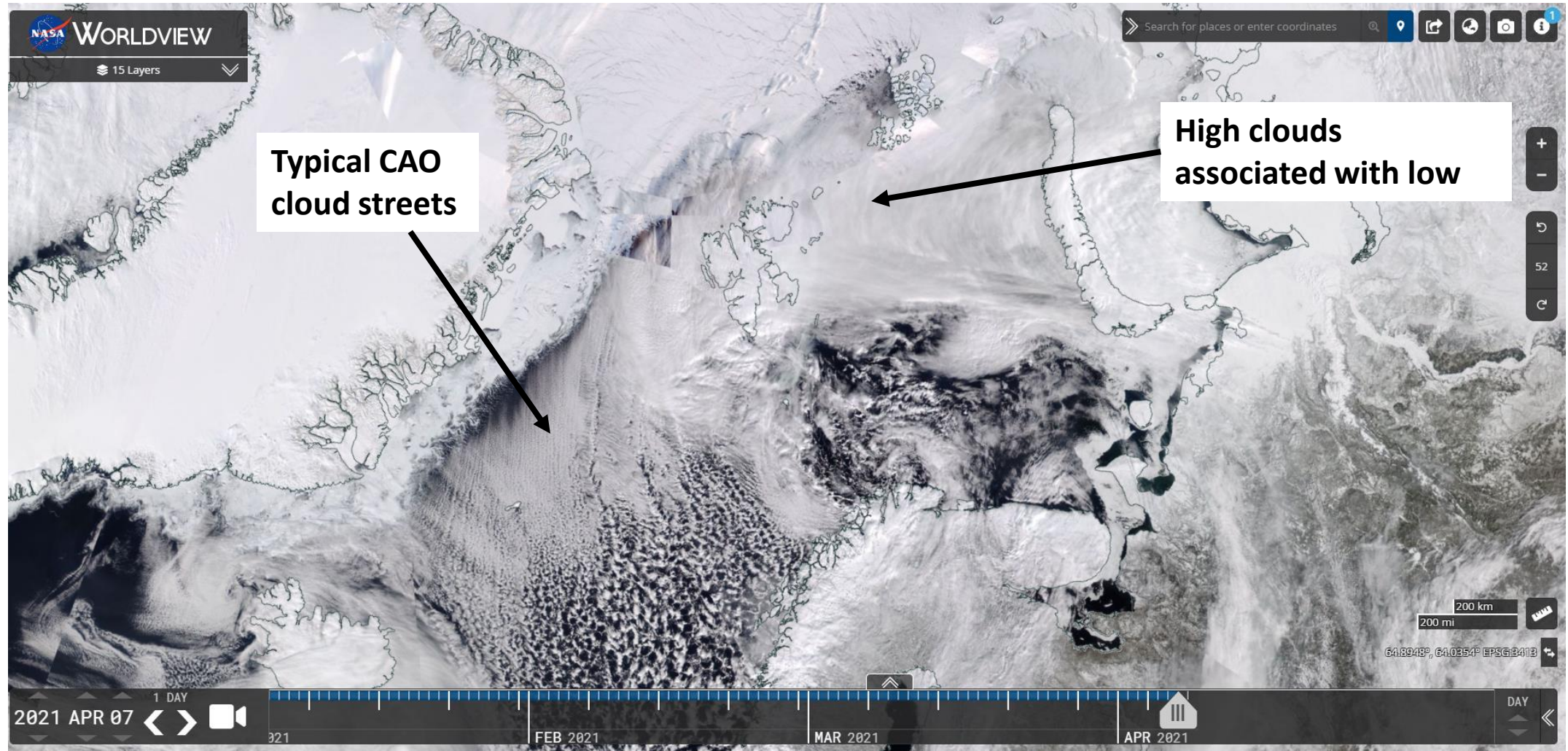
ECMWF kachelmannwetter.com
WETTER HD

Nordpol
ECMWF/Global Euro HD vom 07.04.2021/12z

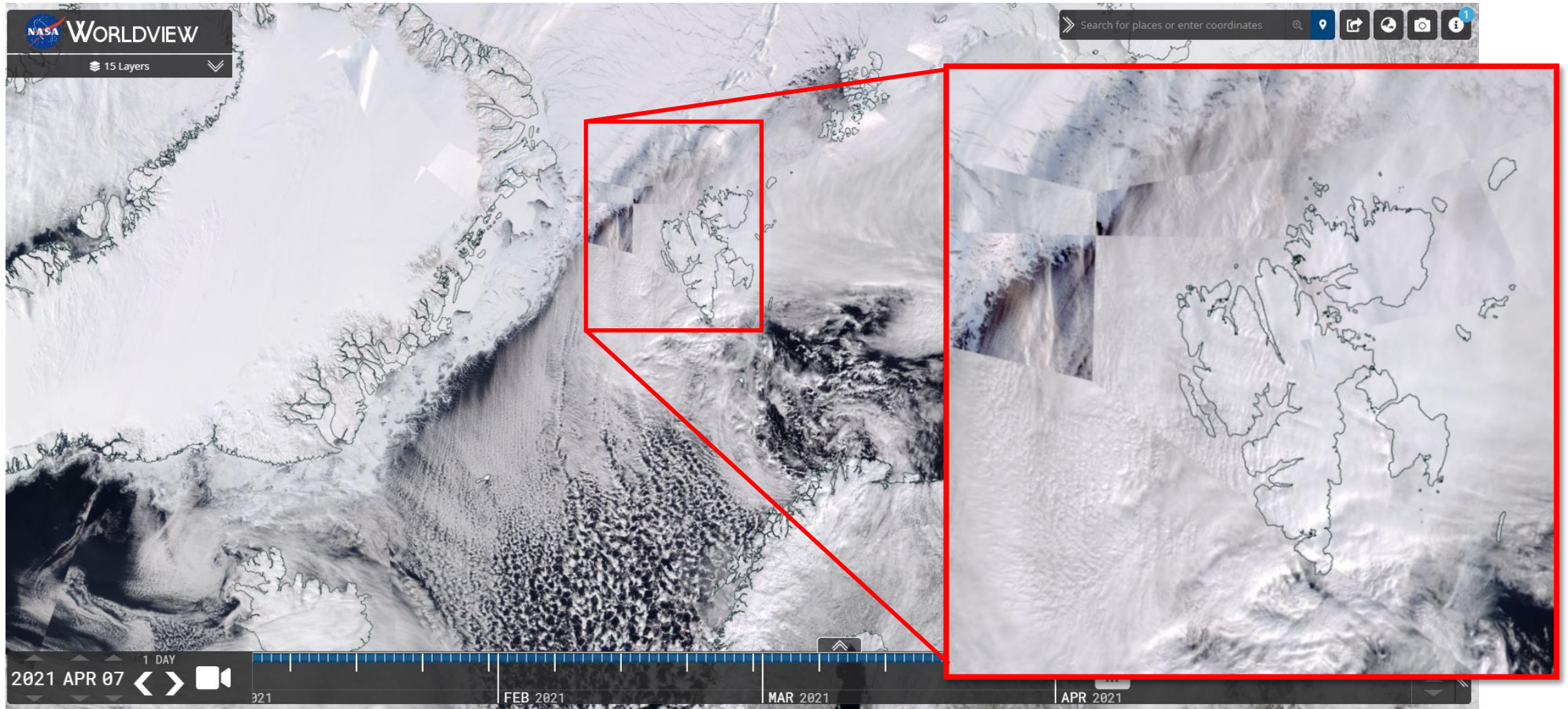
ECMWF kachelmannwetter.com
WETTER HD

- Kiruna mostly cloud-free
- The low brings clouds of all altitudes to Svalbard/LYR

VIIRS (NOAA-20) (07.04.2021)



VIIRS (NOAA-20) (06.04.2021)



Airport situation: Longyearbyen (07.04.2021)



- Strong winds & precipitation
- Extremely low visibility
- No flight possible

Svalbard Airport. Longyear

Longyearbyen, Norway

latitude: 78-15N, longitude: 015-28E, elevation: 2 m

Current weather observation

The report was made **25** minutes ago, at **11:50** UTC

Wind **25** kt from the **Northeast** with gusts up to **37** kt

Temperature **-7°C**

Humidity **86%**

Pressure **991** hPa

Visibility: **0300** m

heavy snow, Blowing snow

[Change units](#)

METAR: ENSB 071150Z 04025G37KT 0300 +SN BLSN VV005 M07/M09 Q0991 TEMPO 04025KT 1000 SN VV008 RMK WIND 1400FT 03029KT

Time: 14:15 (12:15 UTC)

Forecast

Forecast valid from 07 at 12 UTC to 08 at 12 UTC

Wind **25** kt from the **Northeast**

Visibility: **1000** m

at a height of **800** ft

snow

Temporary

from 07 at 12 UTC to 07 at 15 UTC

Wind **25** kt from the **Northeast** with gusts up to **35** kt

Visibility: **0300** m

at a height of **300** ft

heavy snow, Blowing snow

Becoming

from 07 at 15 UTC to 07 at 18 UTC

Wind **8** kt from the **East**

Visibility **10** km or more

Few clouds at a height of **1000** ft
Broken clouds at a height of **2000** ft

light snow

Temporary

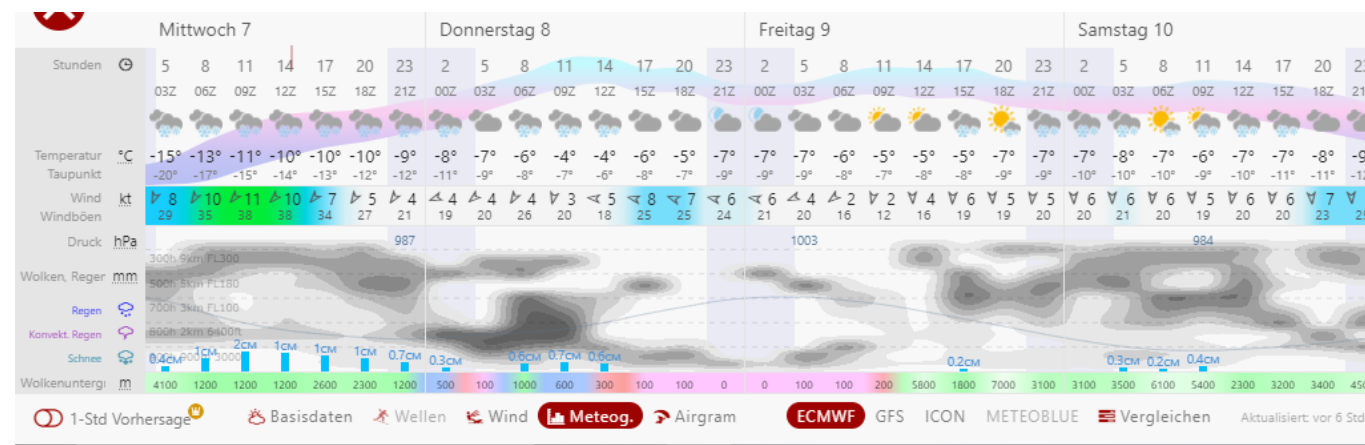
from 07 at 15 UTC to 07 at 21 UTC

Visibility: **1000** m

at a height of **800** ft

snow

TAF: ENSB 0712/0812 04025KT 1000 SN VV008 TEMPO 0712/0715 04025G35KT 0300 +SN BLSN VV003 BECMG 0715/0718 1000KT 9999 -SN FEW010 BKN020 TEMPO 0715/0721 1000 SN VV008



Airport situation: Kiruna (07.04.2021)

- Good visibility, few clouds

Kiruna Airport

Kiruna, Sweden
 latitude: 67-49N, longitude: 020-20E,
 elevation: 452 m

Current weather observation

The report was made **25 minutes ago, at 11:50 UTC**

Wind 12 kt from the West

Temperature 0°C

Humidity 59%

Pressure 987 hPa

Visibility 10 km or more

Scattered clouds at a height of 4300 ft
Broken clouds at a height of 10000 ft

[Change units](#)

METAR: ESNQ 071150Z 28012KT 9999 SCT043 BKN100 M00/M07 Q0987

Time: 14:15 (12:15 UTC)

Forecast

The report was made **45 minutes ago, at 11:30 UTC**

Forecast valid from 07 at 12 UTC to 07 at 17 UTC

Wind 14 kt from the West/Northwest

Visibility 10 km or more

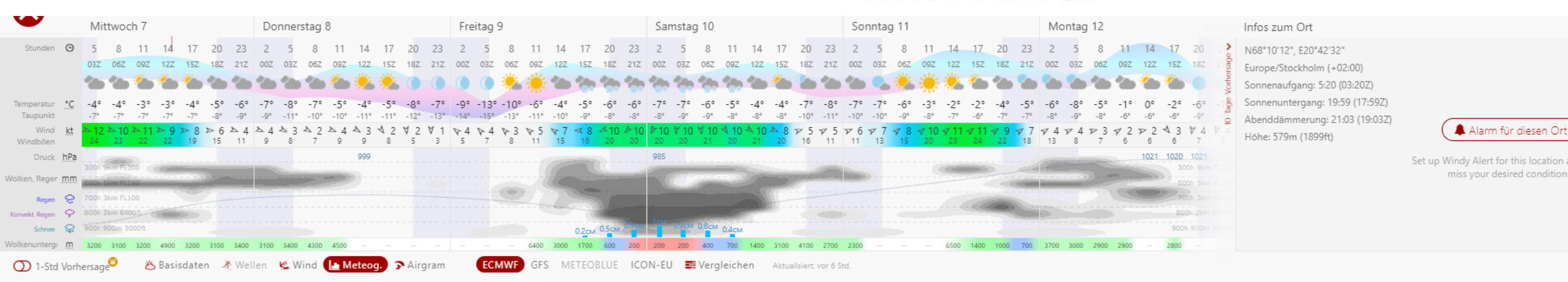
no clouds below 1500 m and no cumulonimbus

Temporary from 07 at 12 UTC to 07 at 17 UTC

Scattered clouds at a height of 4000 ft, Cumulonimbus.

light snow showers

TAF: ESNQ 071130Z 0712/0717 30014KT CAVOK TEMPO 0712/0717 -SHSN SCT040CB



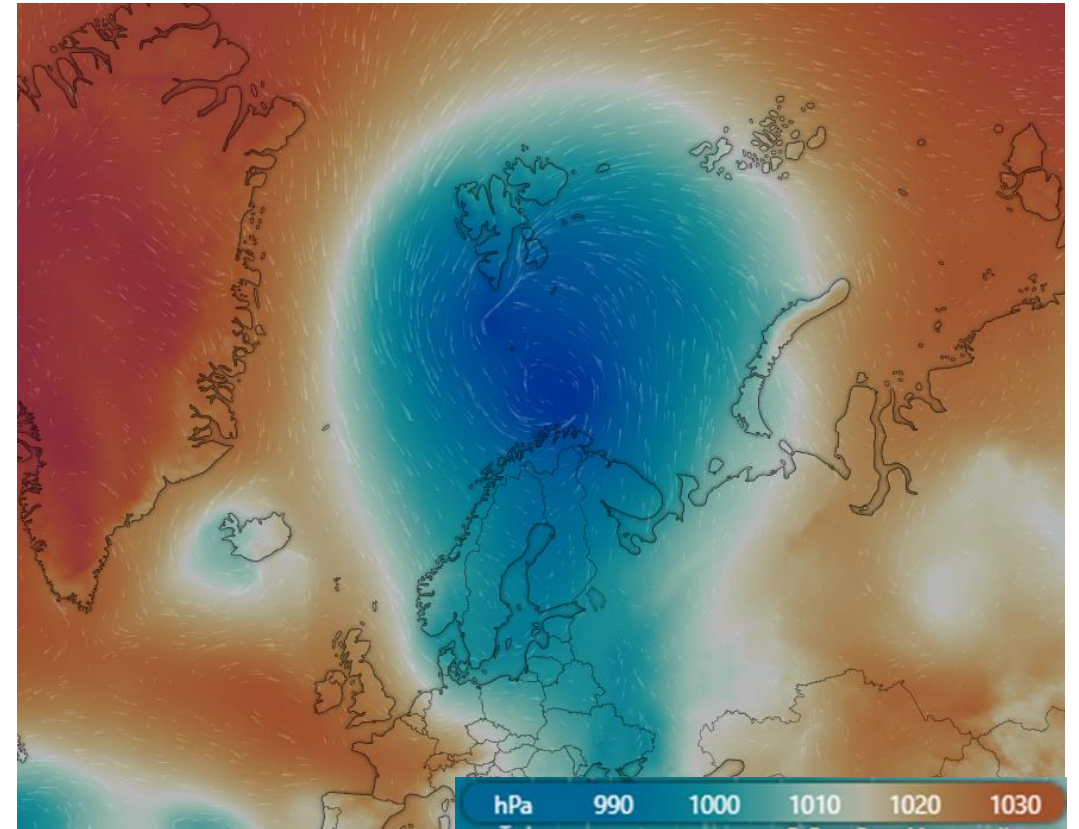
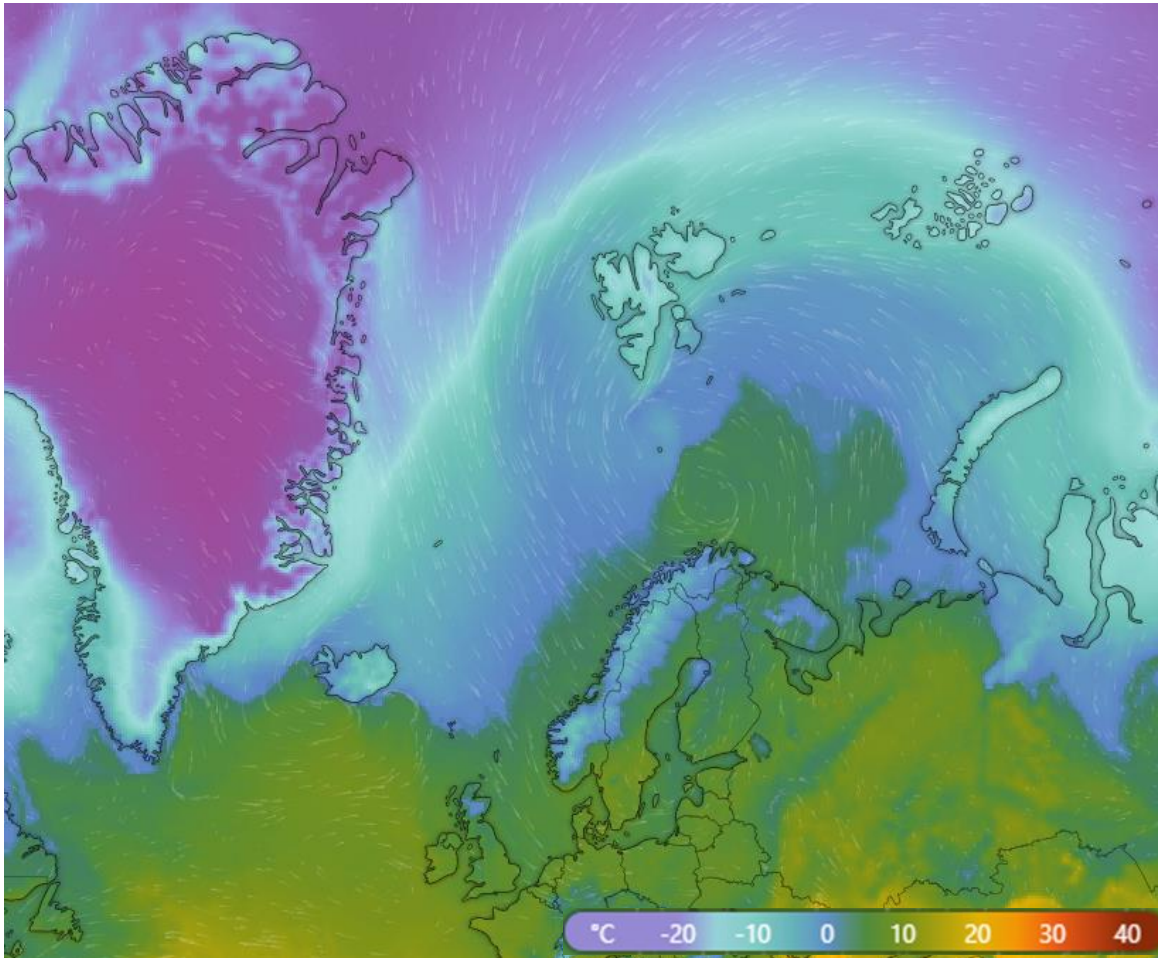
Infos zum Ort

N68°10'12", E20°42'32"
 Europe/Stockholm (+02:00)
 Sonnenaufgang: 5:20 (03:20Z)
 Sonnenuntergang: 19:59 (17:59Z)
 Abenddämmerung: 21:03 (19:03Z)
 Höhe: 579m (1899ft)

Alarm für diesen Ort

Set up Windy Alert for this location a miss your desired conditions

Windy surface temperature/pressure (07.04.2021)



Summary

- Svalbard under heavy influence by low (clouds, precipitation)
- Still CAO S-W of Svalbard, but no flight possible from LYR