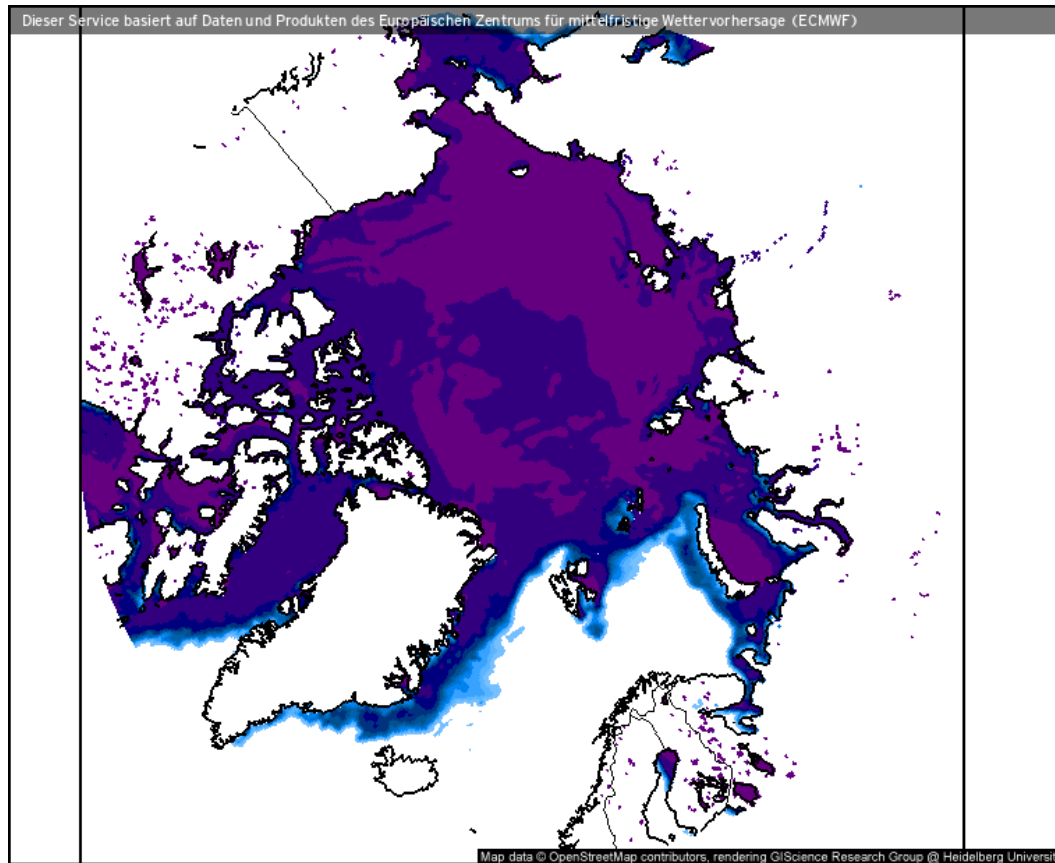


Weather observations

06.04.2021

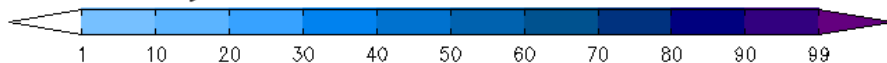
Tim | Benjamin

Sea ice cover (06.04.2021 12 UTC)



- Still pronounced Whaler's Bay polynia
- Sea ice cover increase East of Greenland

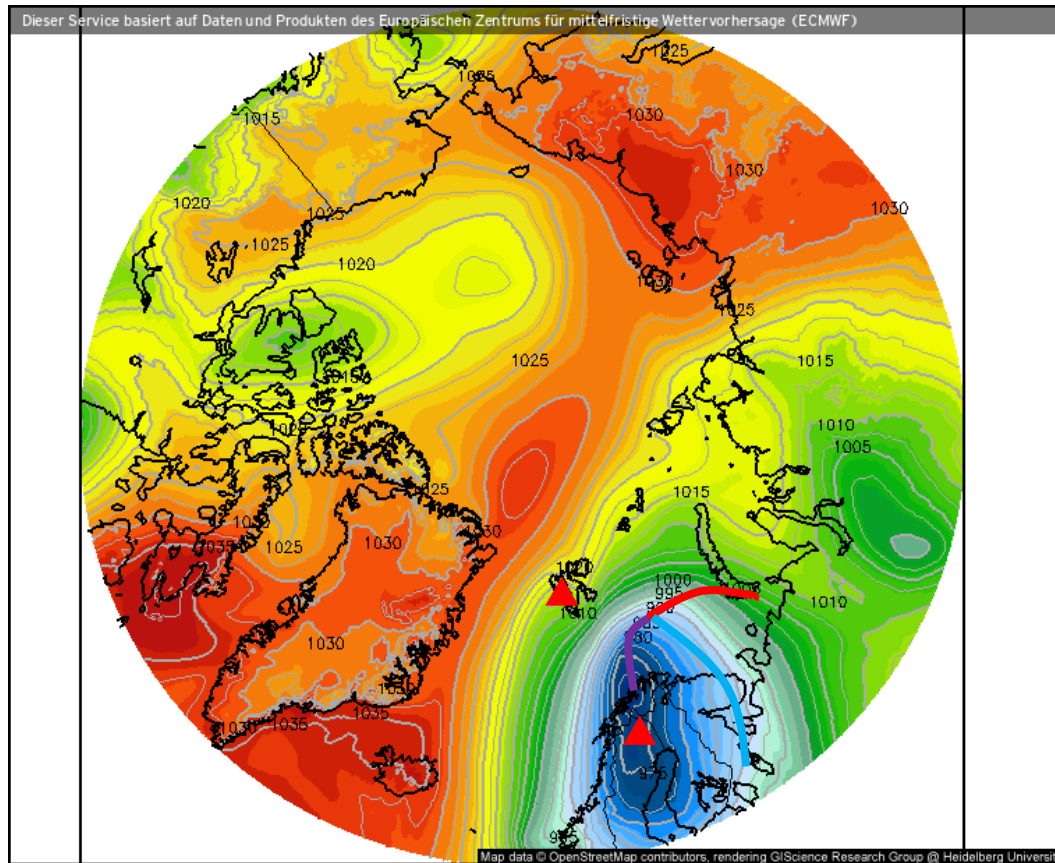
Eisbedeckung (Meere und Seen) (%)



Prognose für
Di. 06.04.2021, 14:00 Uhr MESZ

Nordpol
ECMWF/Global Euro HD vom 06.04.2021/12Z

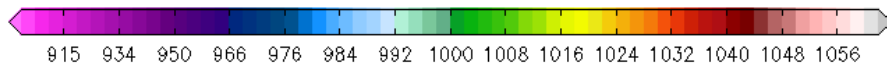
Surface air pressure (06.04.2021 12 UTC)



- Low over Scandinavia weakens
- High over Greenland weakens
- Slightly weaker CAO situation, shifted more towards Svalbard

Luftdruck auf Meereshöhe (hPa)

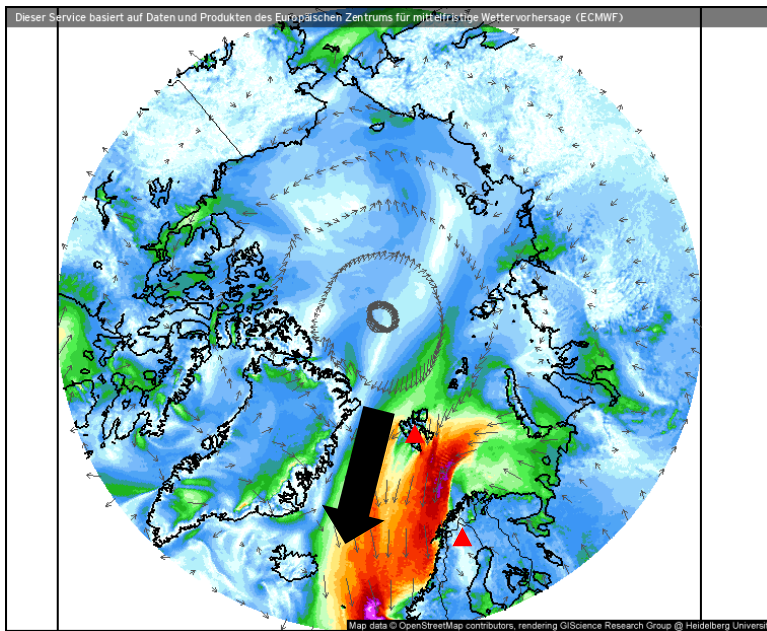
Prognose für
Di. 06.04.2021, 14:00 Uhr MESZ



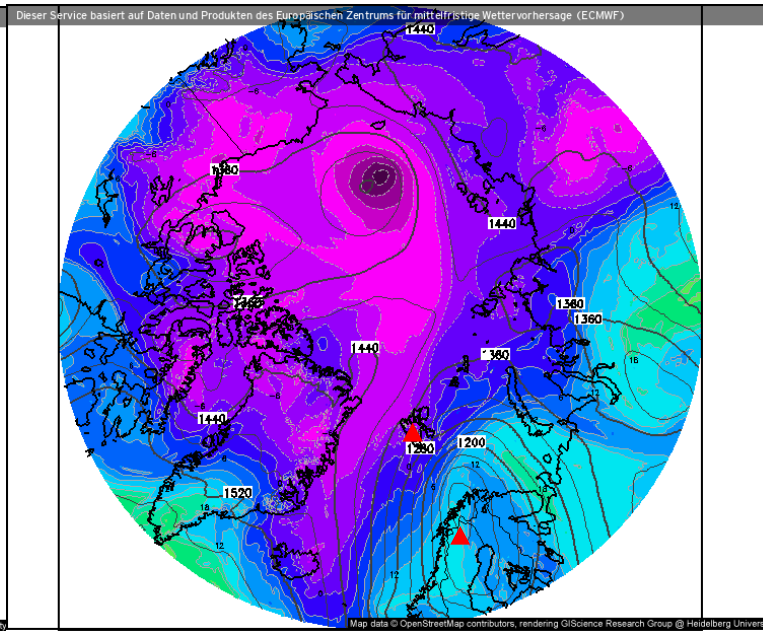
Nordpol
ECMWF/Global Euro HD vom 06.04.2021/12Z

Wind, θ_{eq} , z, IWV (06.04.2021 12 UTC)

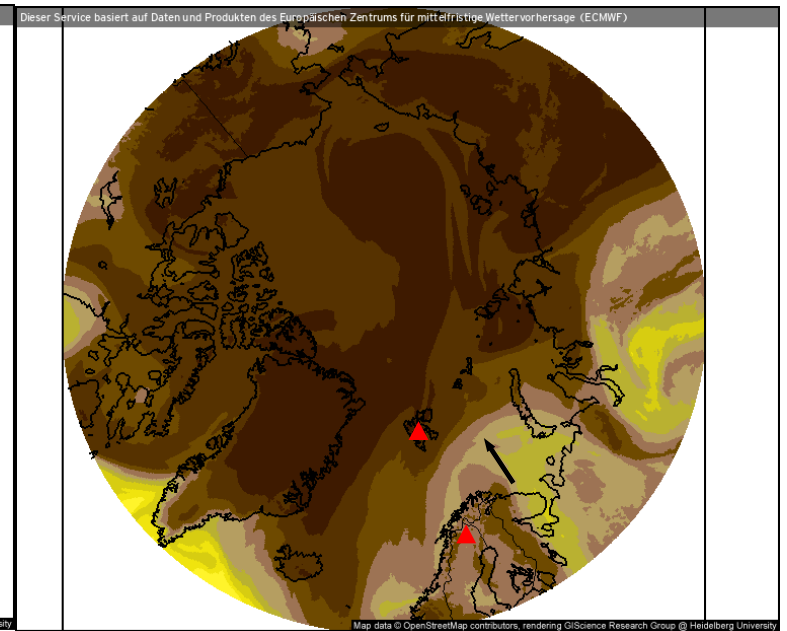
Wind speed and streamlines



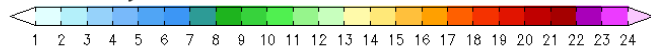
Theta-E and geopotential (850 hPa)



Precipitable water



Windrichtung und Windmittel (m/s)



Prognose für
Di. 06.04.2021, 14:00 Uhr MESZ

Theta-E und Geopot, 850hPa (°C)



Prognose für
Di. 06.04.2021, 14:00 Uhr MESZ

Atmosphärisches Niederschlagswasser (mm)



Prognose für
06.04.2021, 14:00 Uhr MESZ

Nordpol
ECMWF/Global Euro HD vom 06.04.2021/12Z

ECMWF kachelmannwetter.com
WETTER HD

Nordpol
ECMWF/Global Euro HD vom 06.04.2021/12Z

ECMWF kachelmannwetter.com
WETTER HD

Nordpol
ECMWF/Global Euro HD vom 06.04.2021/12Z

ECMWF kachelmannwetter.com
WETTER HD

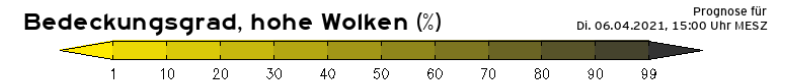
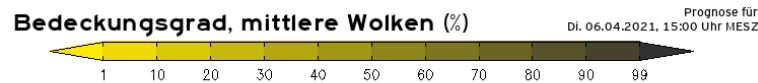
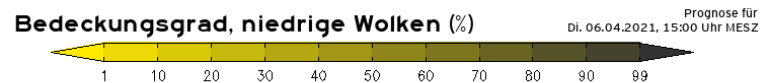
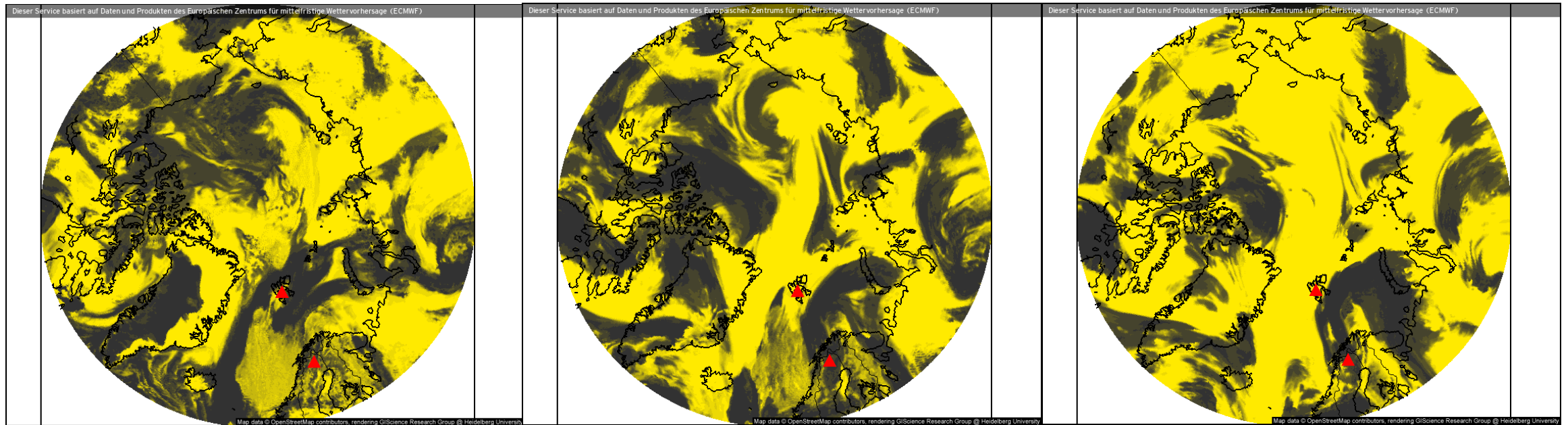
- Slightly weakend CAO over Fram Strait
- Slight intrusion of moist air into Barent Sea – not reaching Svalbard

Clouds (06.04.2021 13 UTC)

Low-level clouds

Mid-level clouds

High-level clouds



Nordpol
ECMWF/Global Euro HD vom 06.04.2021/12z

ECMWF kachelmannwetter.com
WETTER HD

Nordpol
ECMWF/Global Euro HD vom 06.04.2021/12z

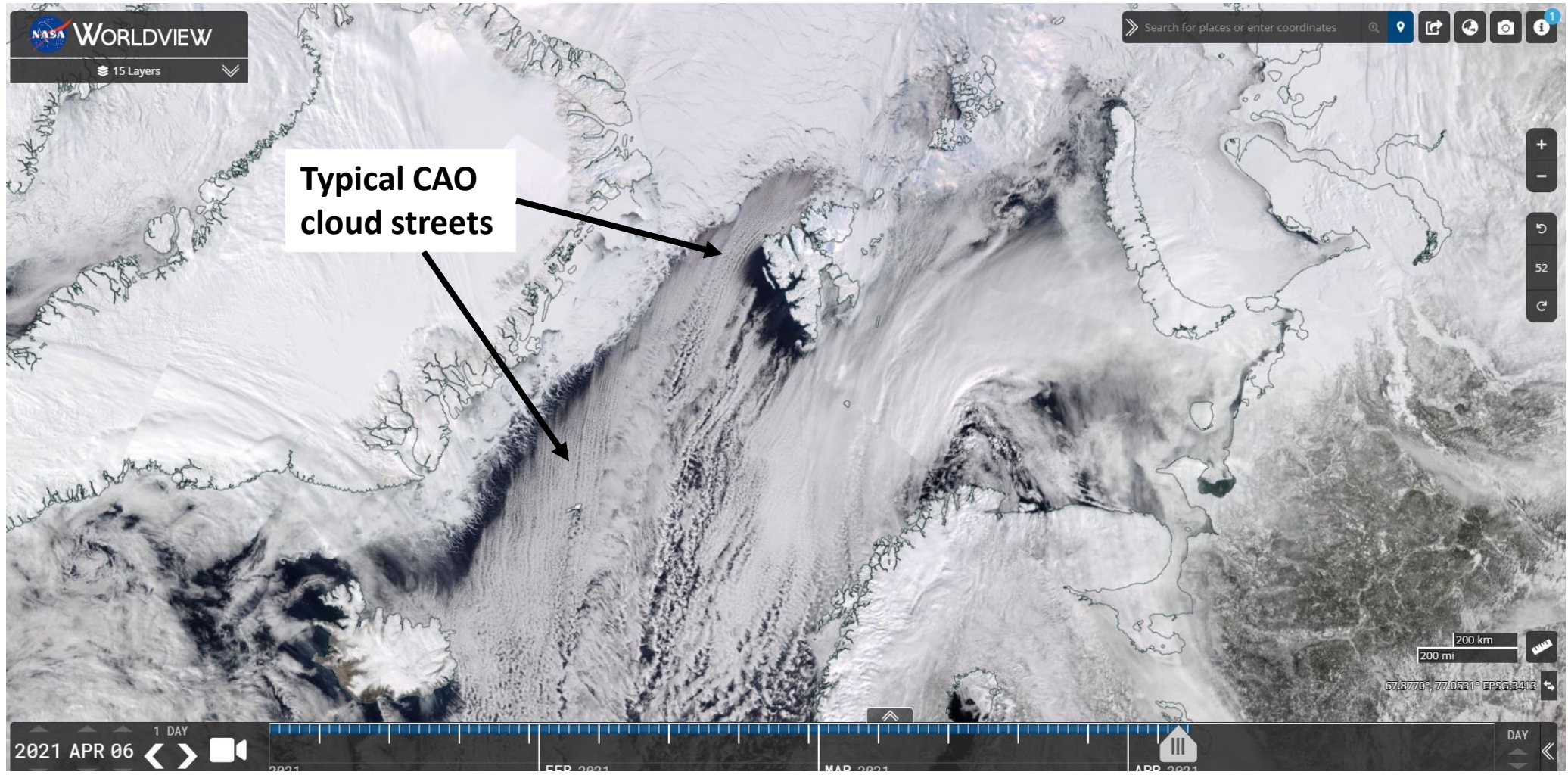
ECMWF kachelmannwetter.com
WETTER HD

Nordpol
ECMWF/Global Euro HD vom 06.04.2021/12z

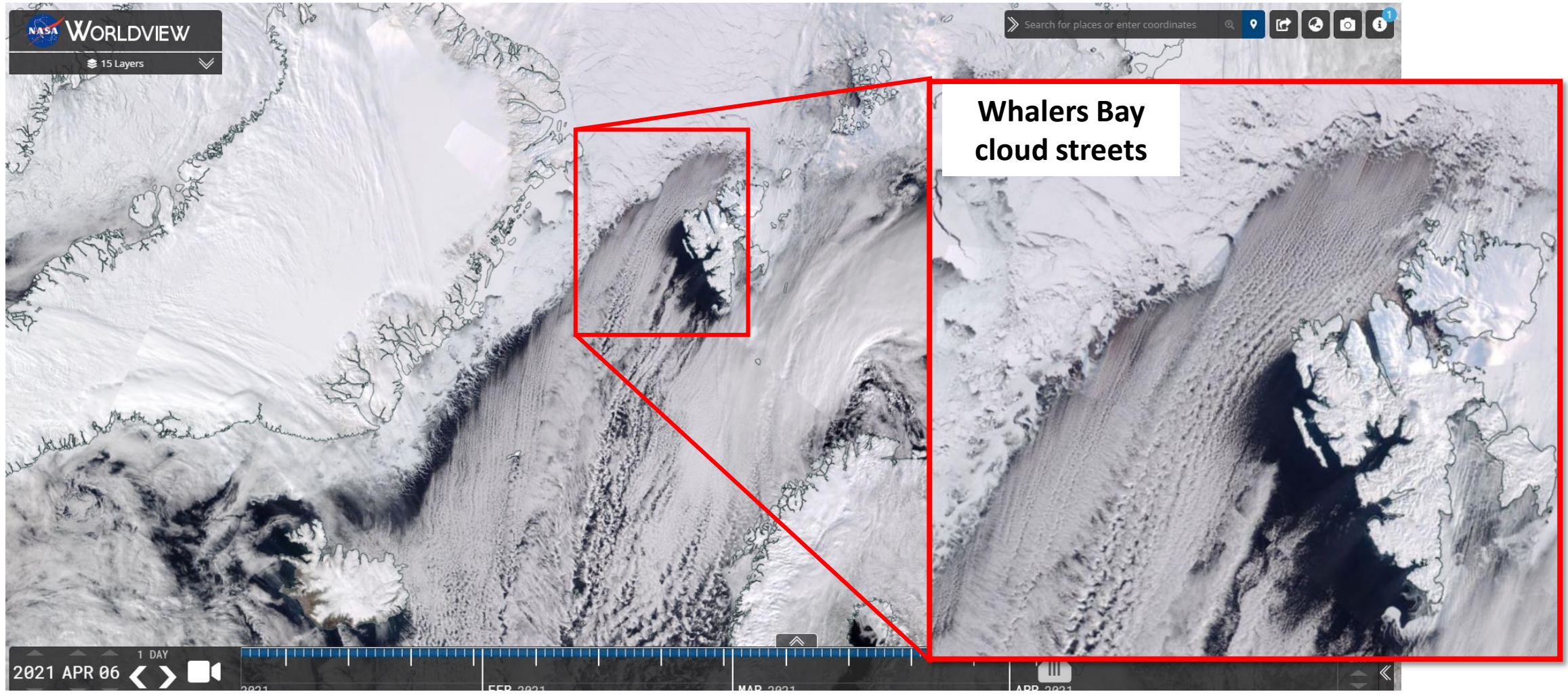
ECMWF kachelmannwetter.com
WETTER HD

- Mostly low clouds above Longyearbyen
- Only low clouds West of Svalbard
- Clouds in all altitudes above Kiruna

VIIRS (NOAA-20) (06.04.2021)



VIIRS (NOAA-20) (06.04.2021)



Airport situation: Longyearbyen (06.04.2021)



Svalbard Airport. Longyear

Longyearbyen, Norway
 latitude: 78-15N, longitude: 015-28E,
 elevation: 2 m

Current weather observation

The report was made 16 minutes ago, at 11:50 UTC
Wind 12 kt from the East/Southeast
Temperature -11°C
Humidity 51%
Pressure 1012 hPa
Visibility 10 km or more
Few clouds at a height of 2000 ft
Change units

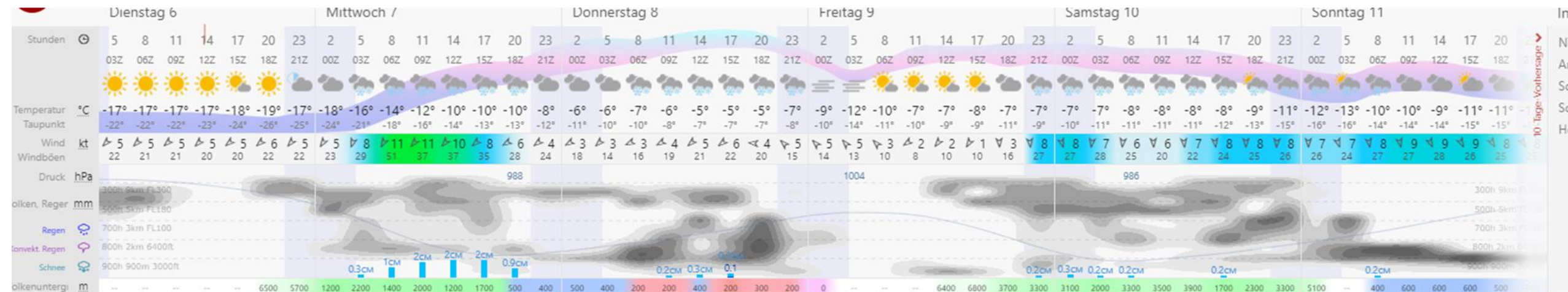
METAR: ENSB 061150Z 11012KT 9999
 FEW020 M11/M19 Q1012 TEMPO 04010KT
RMK WIND 1400FT 07010KT

Time: 14:06 (12:06 UTC)

Forecast

Forecast valid from 06 at 12 UTC to 07 at 12 UTC
Wind 9 kt from the East/Southeast Visibility 10 km or more
Few clouds at a height of 2000 ft Scattered clouds at a height of 3000 ft
<i>Temporary</i> from 06 at 12 UTC to 06 at 22 UTC
Wind 15 kt from the East/Northeast
<i>Becoming</i> from 06 at 22 UTC to 06 at 24 UTC
Wind 20 kt from the North/Northeast
<i>Temporary</i> from 07 at 03 UTC to 07 at 12 UTC
Wind 30 kt from the Northeast with gusts up to 40 kt Visibility: 1000 m at a height of 800 ft
Blowing snow
TAF: ENSB 0612/0712 12009KT 9999 FEW020 SCT030 TEMPO 0612/0622 06015KT BECMG 0622/0624 03020KT TEMPO 0703/0712 04030G40KT 1000 BLSN VV000

- Good visibility, only few clouds



Airport situation: Kiruna (06.04.2021)

- Good visibility, but many clouds
- In the evening, visibility partly reduced @900 ft

Kiruna Airport
 Kiruna, Sweden
 latitude: 67-49N, longitude: 020-20E,
 elevation: 452 m

Current weather observation
 The report was made **16** minutes ago, at **11:50** UTC

Wind **10** kt from the **North**

Temperature **1°C**

Humidity **93%**

Pressure **970** hPa

Visibility **10** km or more

Few clouds at a height of **700** ft
Broken clouds at a height of **1300** ft
Overcast at a height of **8000** ft

[Change units](#)

METAR: ESNQ 061150Z 35010KT 9999
 FEW007 BKN013 OVC080 01/M00 Q0970

Time: 14:06 (12:06 UTC)

Forecast
 The report was made **36** minutes ago, at **11:30** UTC

Forecast valid from 06 at 12 UTC to 06 at 17 UTC

Wind **8** kt from the **North/Northwest**

Visibility: **8000** m

Broken clouds at a height of **2500** ft

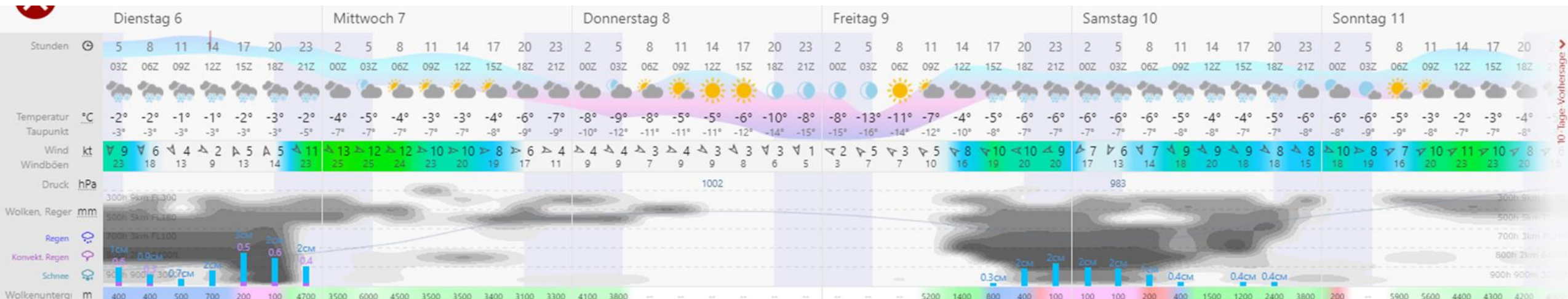
light snow

Temporary
 from 06 at 12 UTC to 06 at 17 UTC

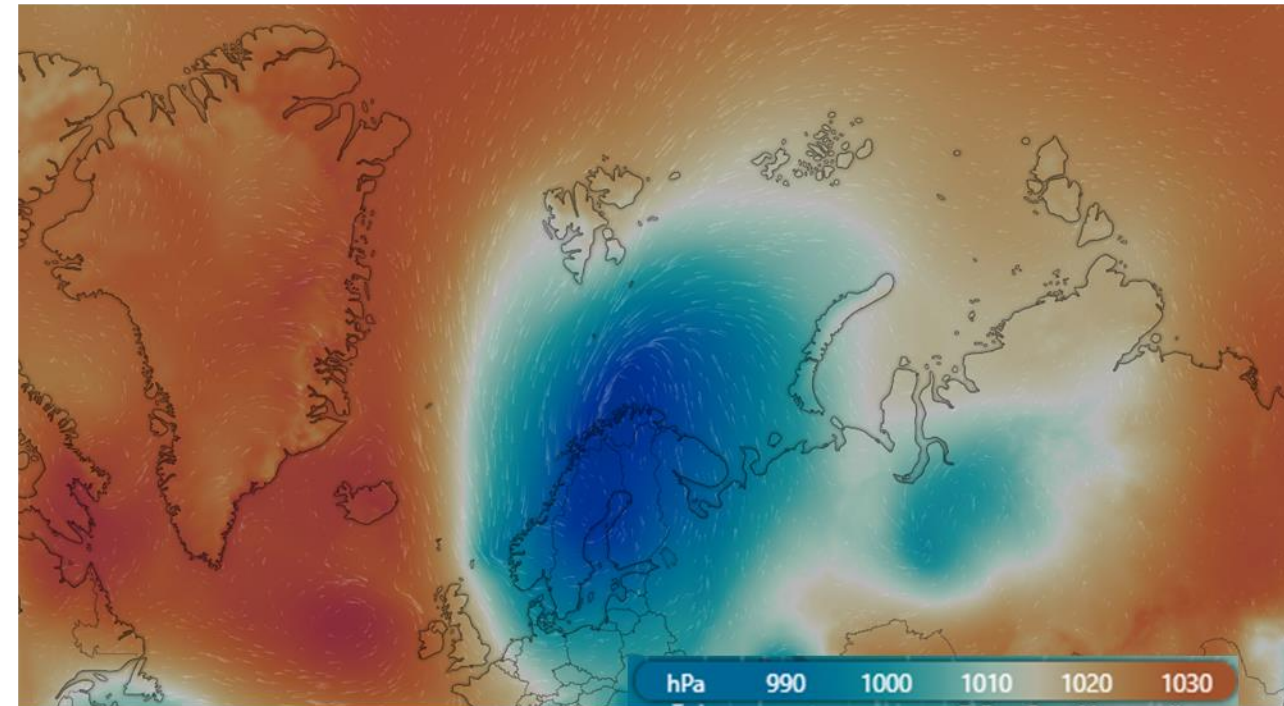
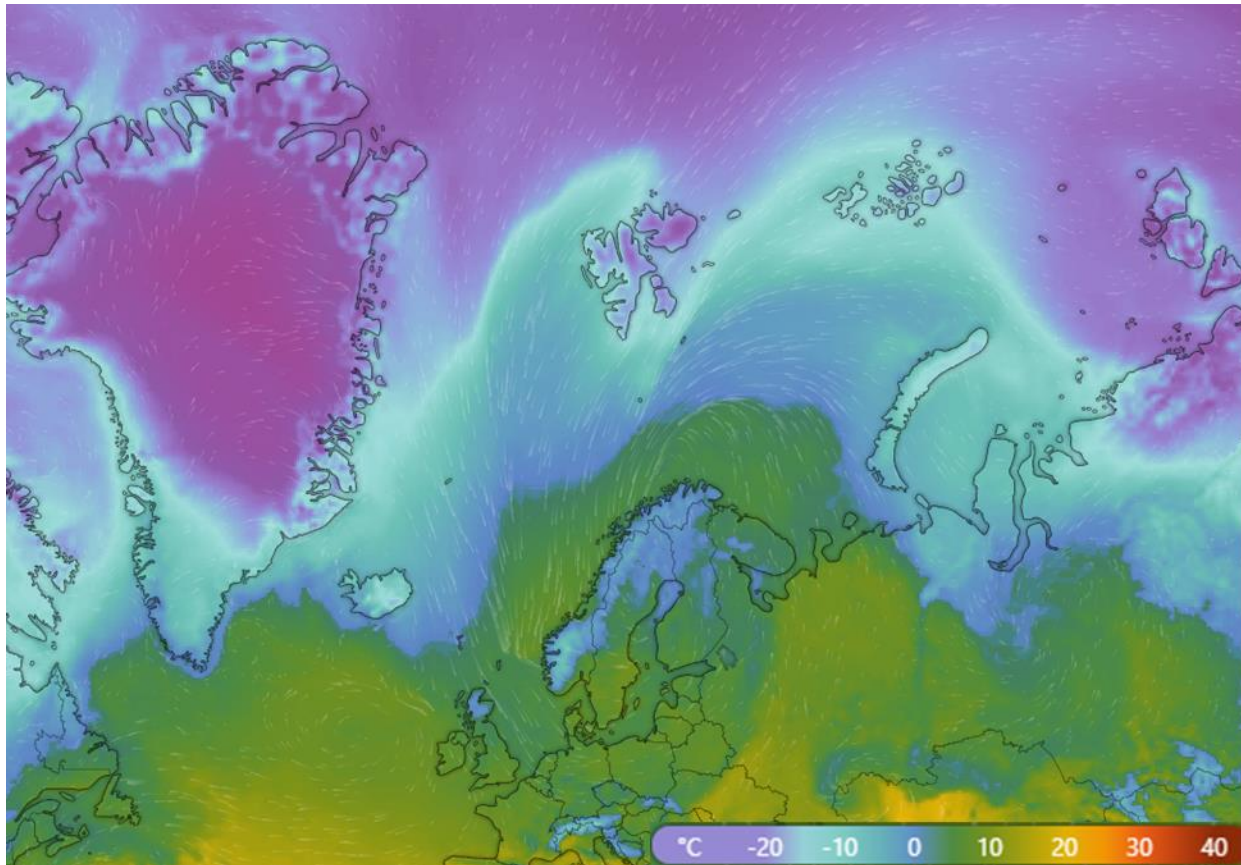
Visibility: **1800** m
 at a height of **900** ft

snow

TAF: ESNQ 061130Z 0612/0617 34008KT
 8000 -SN BKN025 TEMPO 0612/0617 1800
 SN VV009



Windy surface temperature/pressure (06.04.2021)



Summary

- Intense CAO West of Svalbard
- Compared to yesterday, the CAO cloud streets are even closer to the island & already start at Whalers Bay