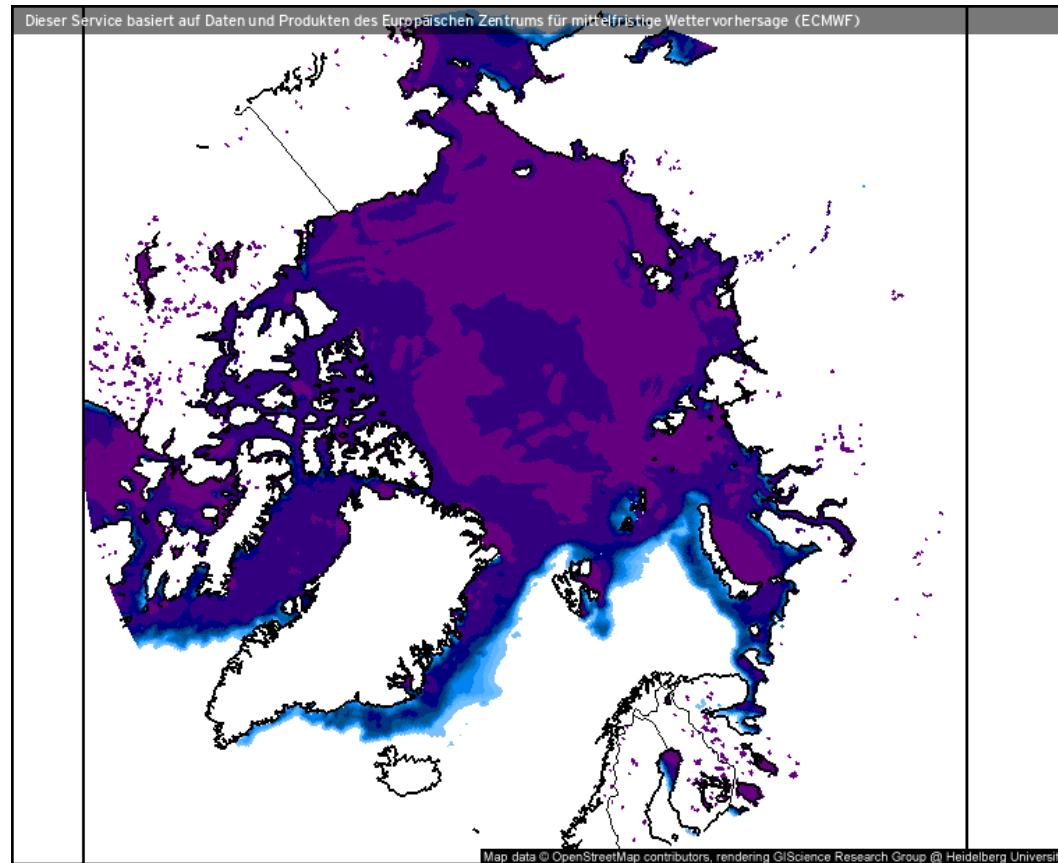


# Weather observations

## 05.04.2021

Tim | Benjamin

# Sea ice cover (05.04.2021 12 UTC)



- Still pronounced Whaler's Bay polynia
- Sea ice cover increase East of Greenland

Eisbedeckung (Meere und Seen) (%)

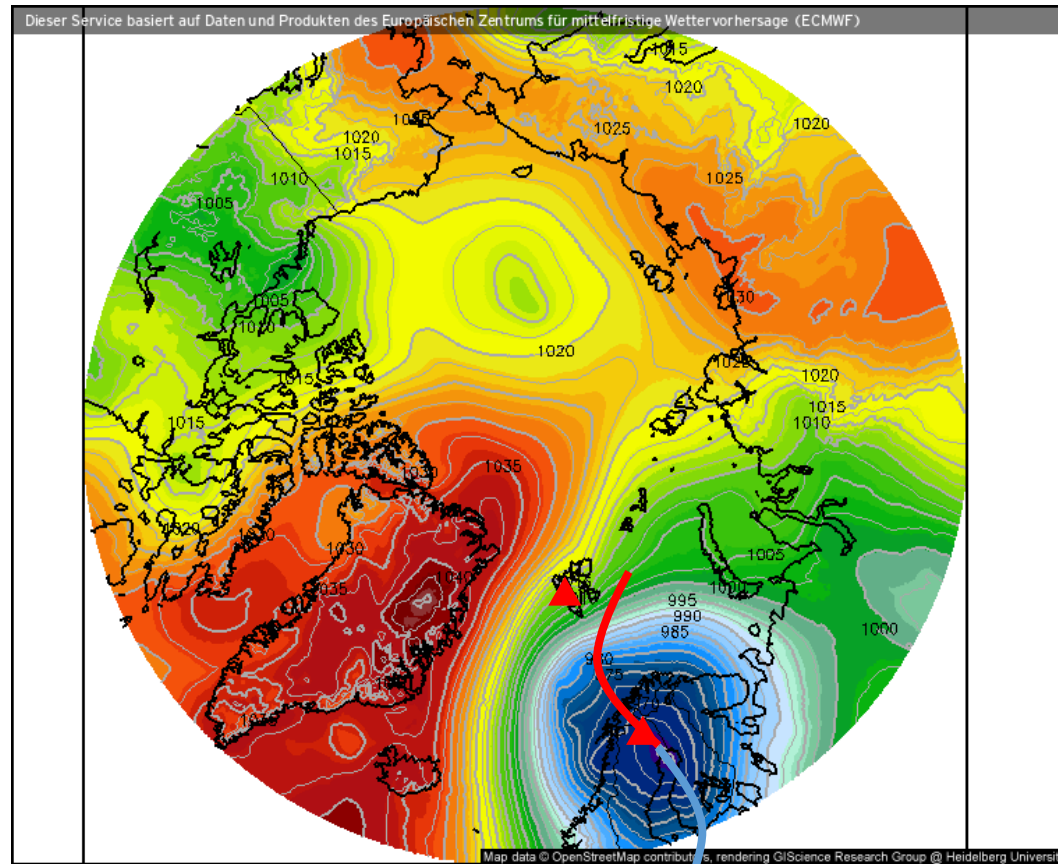


Prognose für

Mo. 05.04.2021, 14:00 Uhr MESZ

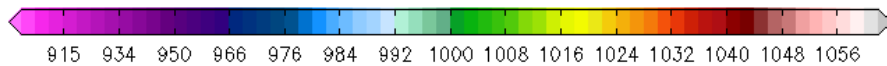
Nordpol  
ECMWF/Global Euro HD vom 05.04.2021/12Z

# Surface air pressure (05.04.2021 12 UTC)



- Low to South of Svalbard further intensifies, but shifts towards Scandinavia
- High over Greenland weakens
- Slightly weaker CAO situation

Luftdruck auf Meereshöhe (hPa)

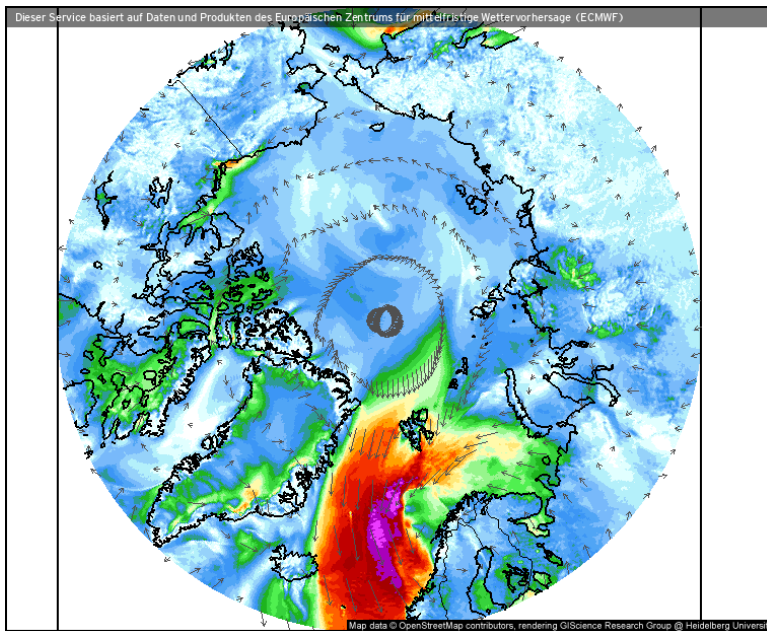


Prognose für  
Mo. 05.04.2021, 14:00 Uhr MESZ

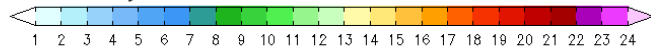
Nordpol  
ECMWF/Global Euro HD vom 05.04.2021/12Z

# Wind, $\theta_{eq}$ , z, IWV (05.04.2021 12 UTC)

## Wind speed and streamlines



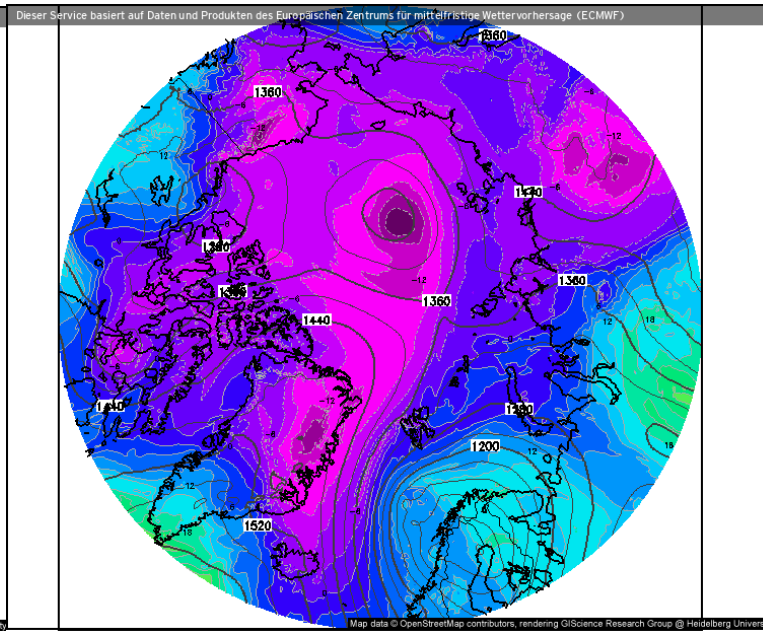
Windrichtung und Windmittel (m/s)



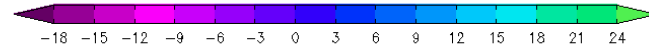
Nordpol  
ECMWF/Global Euro HD vom 05.04.2021/00z

Prognose für  
Mo. 05.04.2021, 14:00 Uhr MESZ  
kachelmannwetter.com  
WETTER HD

## Theta-E and geopotential (850 hPa)



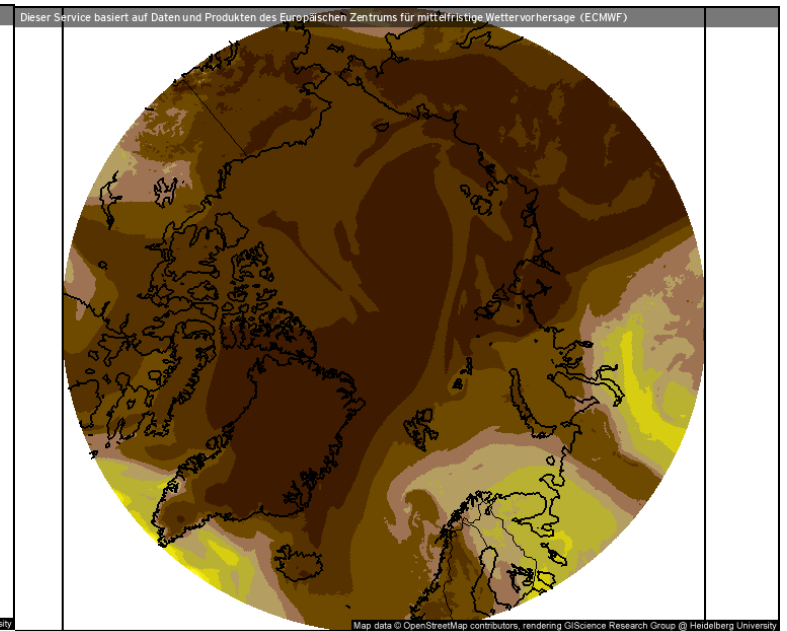
Theta-E und Geopot, 850hPa (°C)



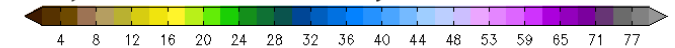
Nordpol  
ECMWF/Global Euro HD vom 05.04.2021/00z

Prognose für  
Mo. 05.04.2021, 14:00 Uhr MESZ  
kachelmannwetter.com  
WETTER HD

## Precipitable water



Atmosphärisches Niederschlagswasser (mm)



Nordpol  
ECMWF/Global Euro HD vom 05.04.2021/00z

Prognose für  
Mo. 05.04.2021, 14:00 Uhr MESZ  
kachelmannwetter.com  
WETTER HD

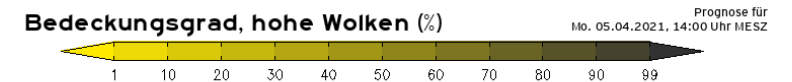
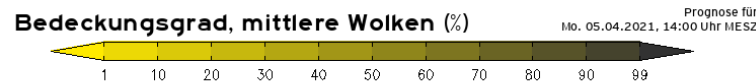
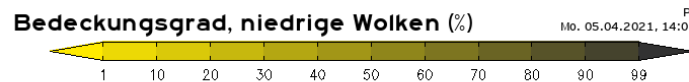
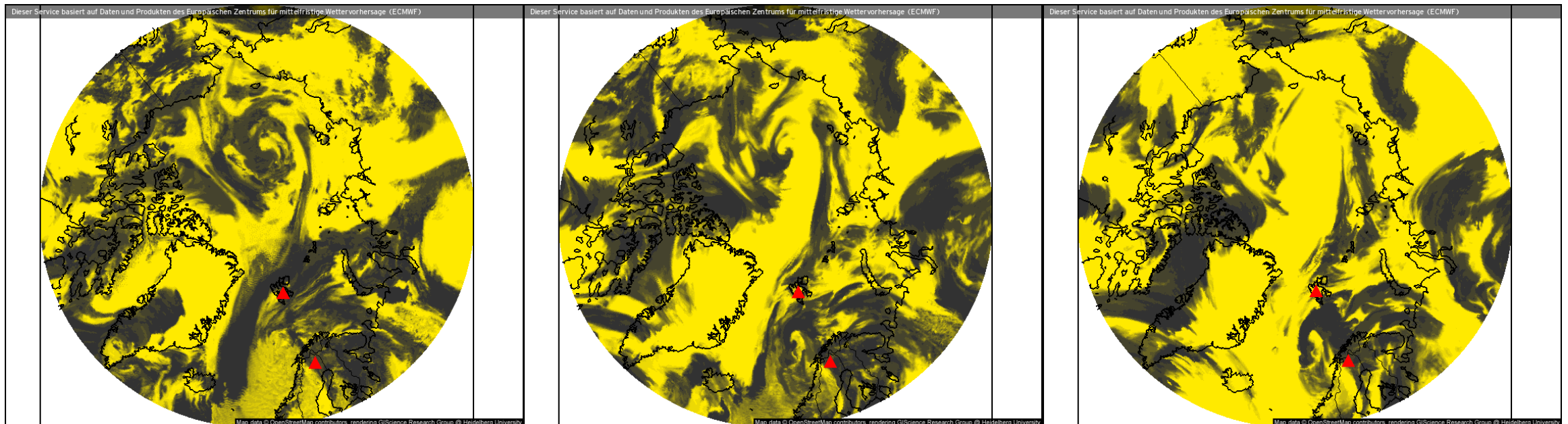
- Massive CAO over Fram Strait
- Slight intrusion of moist air into Barent Sea

# Clouds (05.04.2021 12 UTC)

## Low-level clouds

## Mid-level clouds

## High-level clouds



Nordpol  
ECMWF/Global Euro HD vom 05.04.2021/00Z

ECMWF kachelmannwetter.com  
WETTER HD

Nordpol  
ECMWF/Global Euro HD vom 05.04.2021/00Z

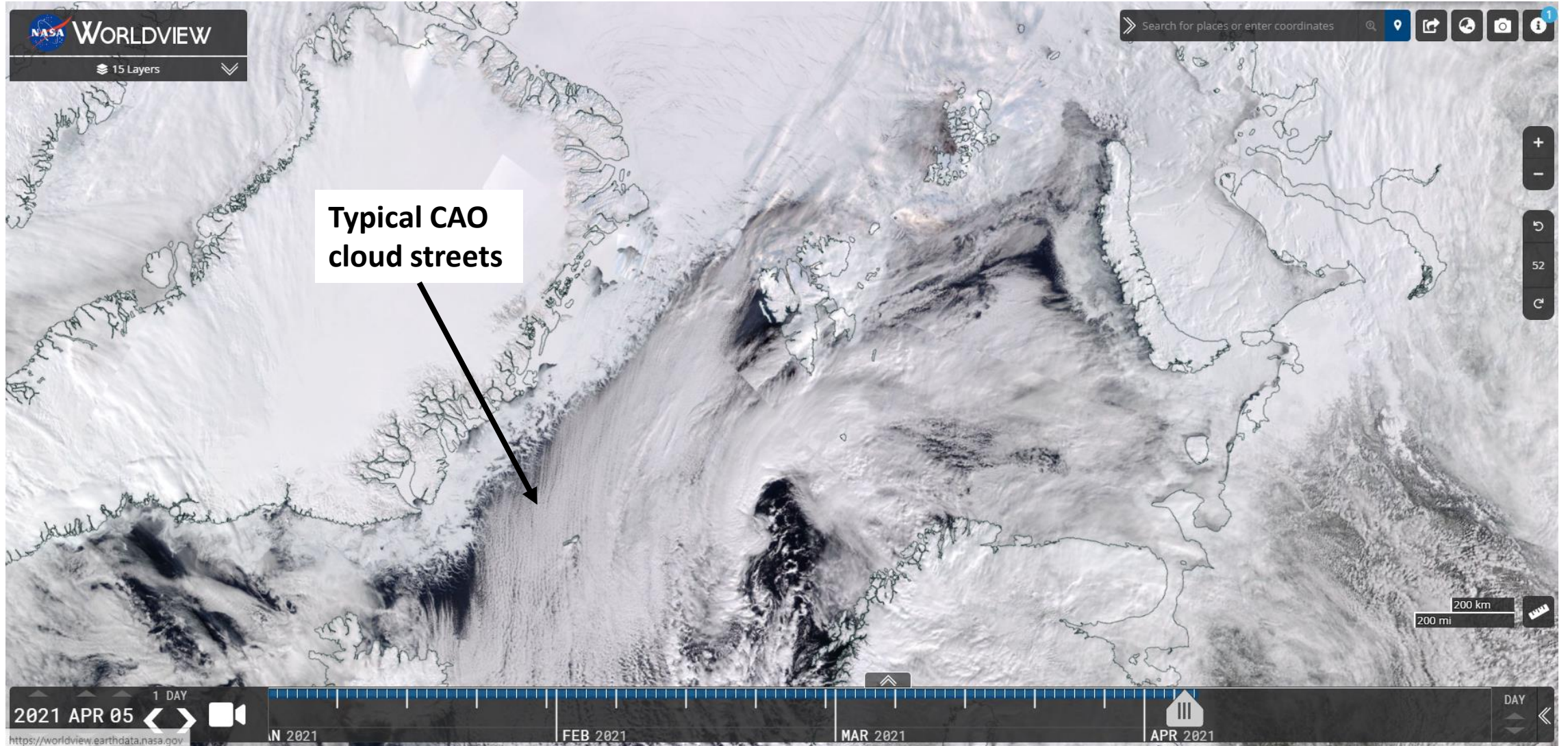
ECMWF kachelmannwetter.com  
WETTER HD

Nordpol  
ECMWF/Global Euro HD vom 05.04.2021/00Z

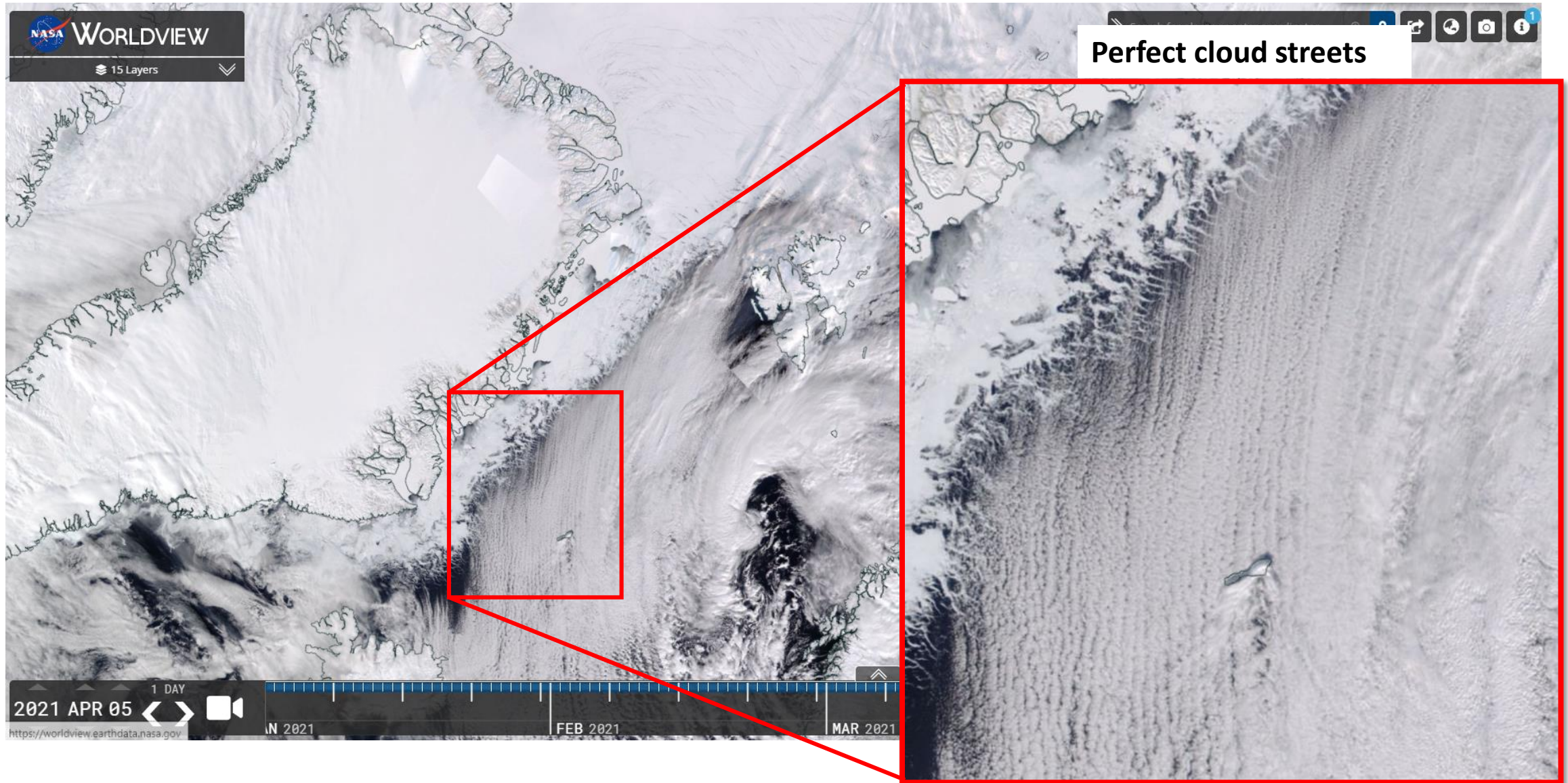
ECMWF kachelmannwetter.com  
WETTER HD

- Clouds in all altitudes above Longyearbyen
- Only low clouds West of Svalbard
- Clouds in all altitudes above Kiruna

# VIIRS (NOAA-20) (05.04.2021)



# VIIRS (NOAA-20) (05.04.2021)



# Airport situation: Longyearbyen (05.04.2021)



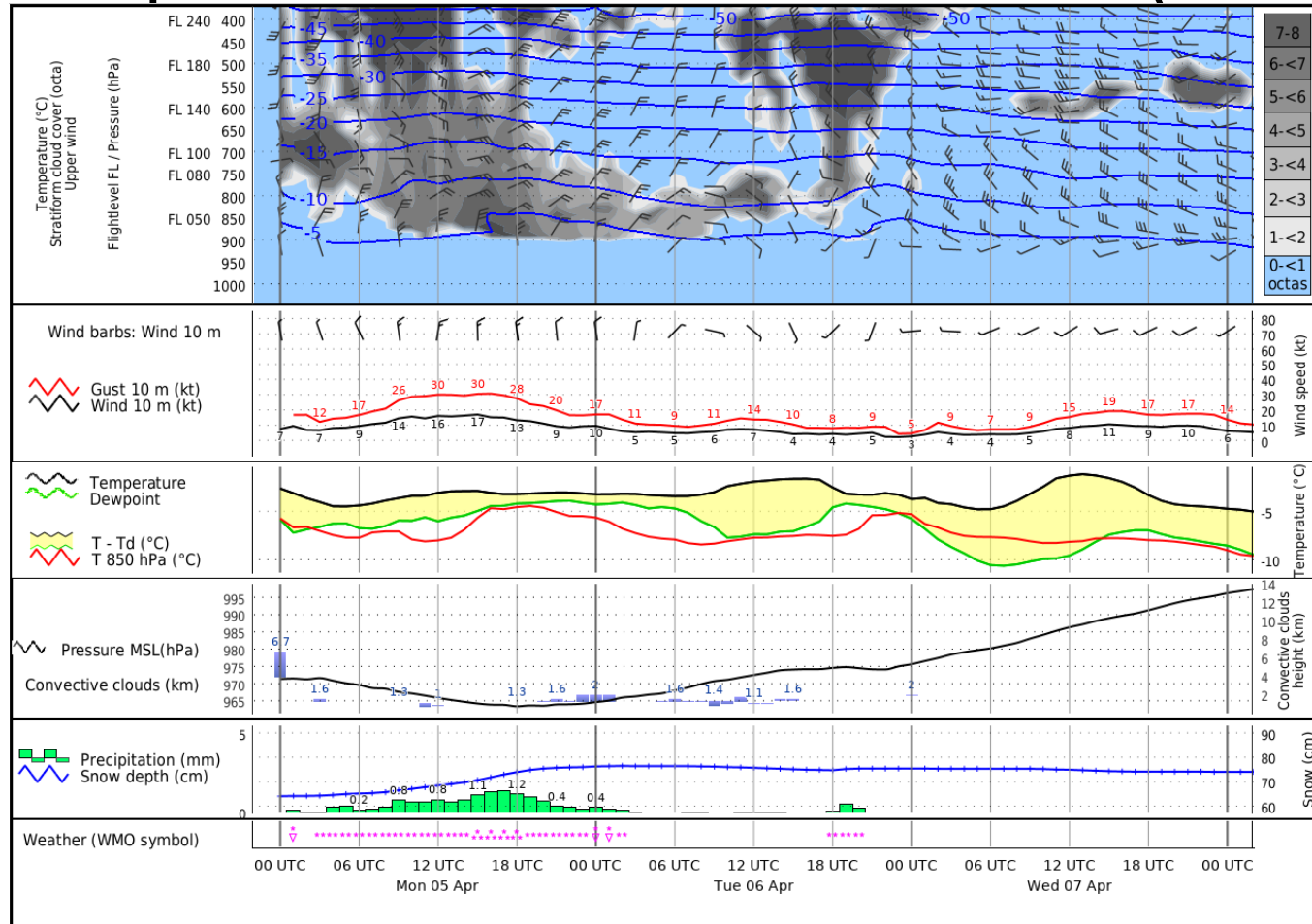
- Sufficient visibility
- Some clouds in different altitudes

Local time	$T_{2m}$ [°C]	$p_{station}$ [mm Hg]	$p_{MSL}$	RH [%]	winds		clouds	visibility [km]	$T_{dew}$ [°C]
07:50	-7	751.1	753.9	68	Wind blowing from the north-east	Strong breeze (13 m/s)	Scattered clouds (40-50%) 750 m, broken clouds (80-90%) 1500 m	10.0 and more	-12
13:50	-7	754.1	756.9	63	Wind blowing from the north-east	Fresh breeze (10 m/s)	Few clouds (10-30%) 300 m, scattered clouds (40-50%) 600 m, broken clouds (80-90%) 1950 m	10.0 and more	-13



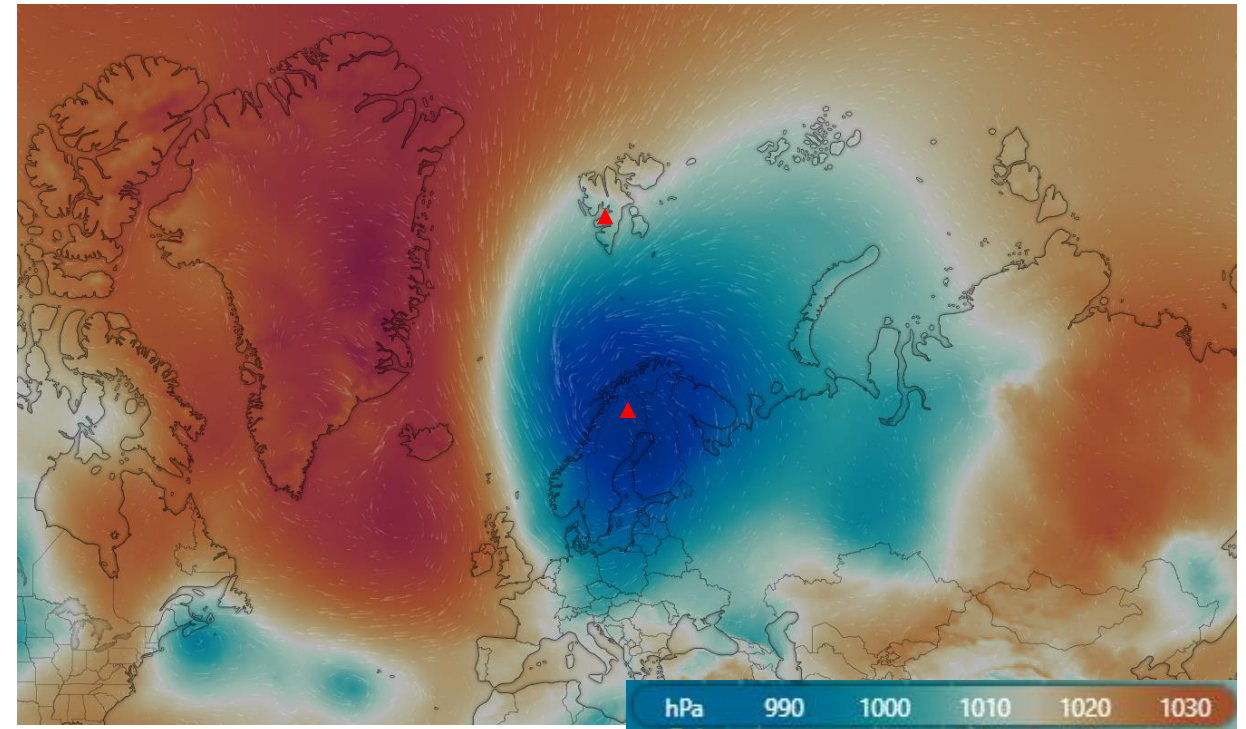
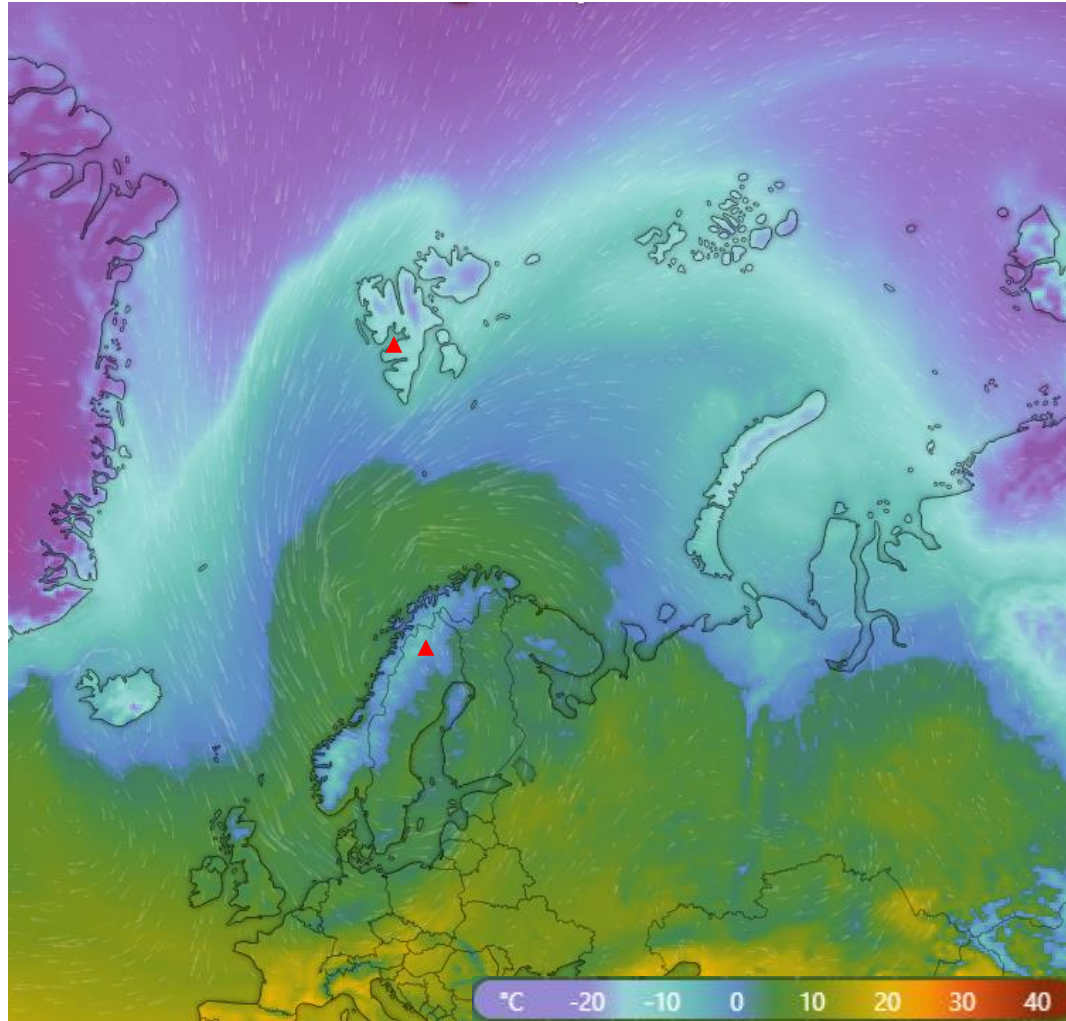
# Airport situation: Kiruna (05.04.2021)

- Low visibility (~2 km)
- Many low clouds present



Local time	T <sub>2m</sub> [°C]	p <sub>station</sub> [mm Hg]	p <sub>MSL</sub> [mm Hg]	RH [%]	winds	clouds	visibility [km]	T <sub>dew</sub> [°C]
07:50	-5	684.1	724.7	100	Wind blowing from the north-northwest Gentle breeze (5 m/s)	Light snow Few clouds (10-30%) 150 m, scattered clouds (40-50%) 360 m, overcast (100%) 800 m	1.8	-5
13:50	-3	682.9	723.1	93	Wind blowing from the north Fresh breeze (8 m/s)	Light snow Few clouds (10-30%) 450 m, scattered clouds (40-50%) 900 m, broken clouds (60-90%) 1200 m	2.1	-4

# Windy surface temperature/pressure (05.04.2021)



## Summary

- Intense CAO S-W of Svalbard