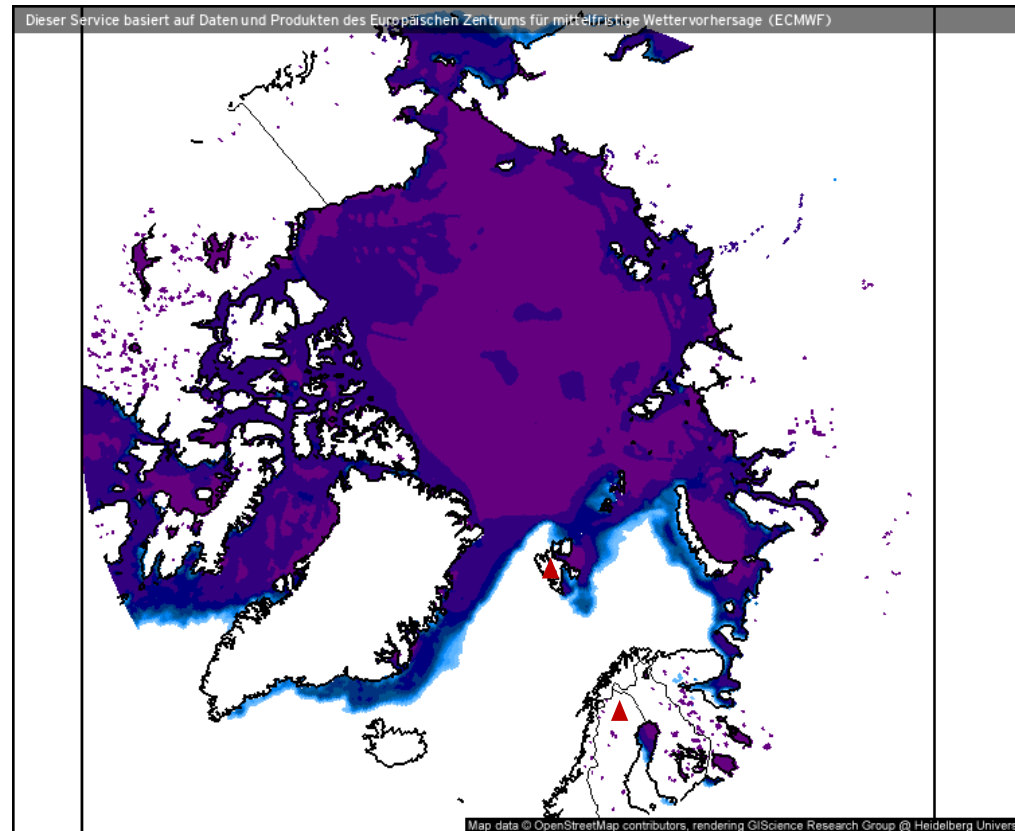


Weather observations  
01.04.2021

# 01.04.2021 00 UTC

## Sea ice fraction



Eisbedeckung (Meere und Seen) (%)

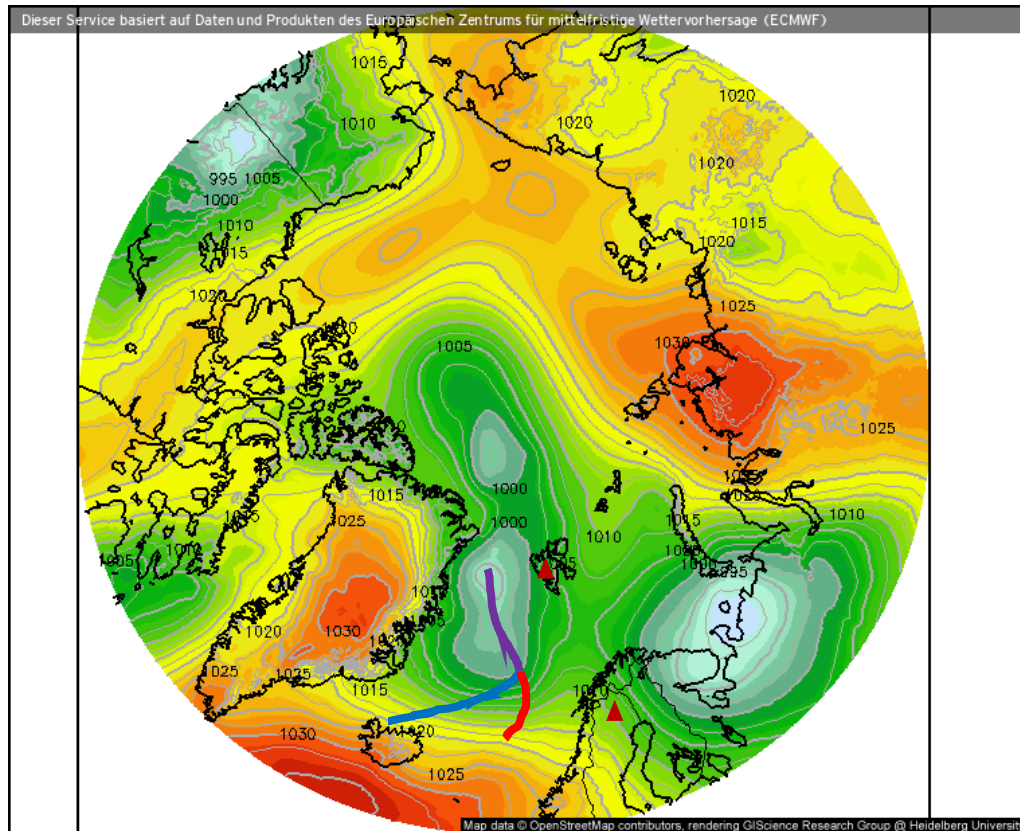
Prognose für  
Do. 01.04.2021, 02:00 Uhr MESZ



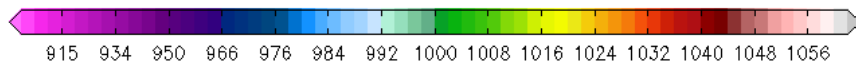
Nordpol  
ECMWF/Global Euro HD vom 01.04.2021/00z

# 01.04.2021 00 UTC

## Surface air pressure



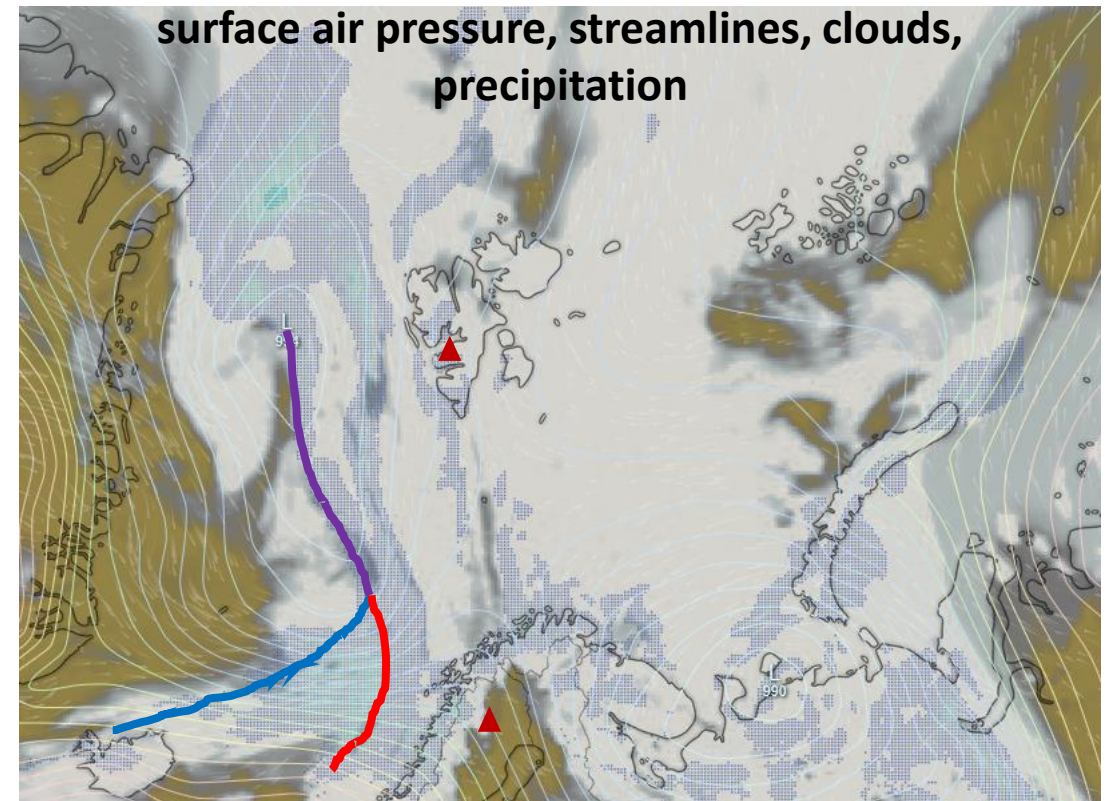
Luftdruck auf Meereshöhe (hPa)



Nordpol  
ECMWF/Global Euro HD vom 01.04.2021/00Z

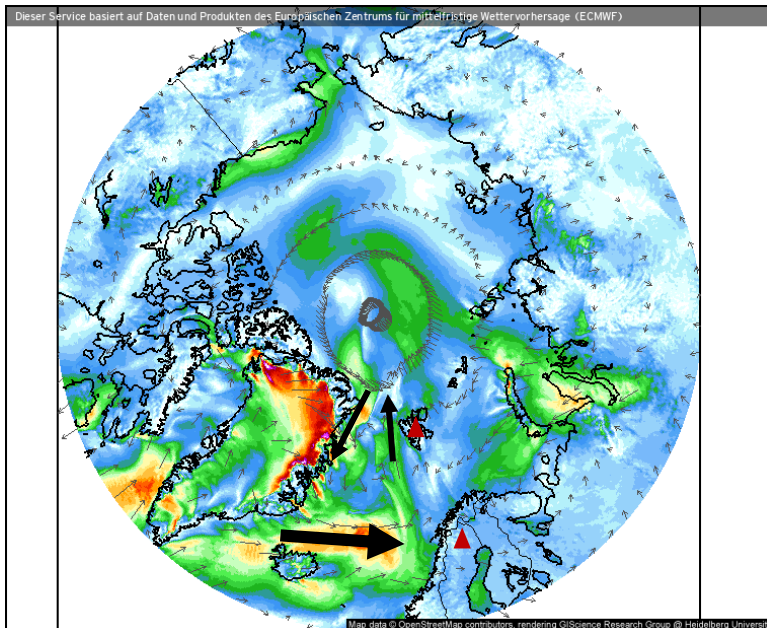
Prognose für  
Do. 01.04.2021, 02:00 Uhr MESZ

- Lows that formed over Greenland move eastward
- northwesterly flow over North Atlantic

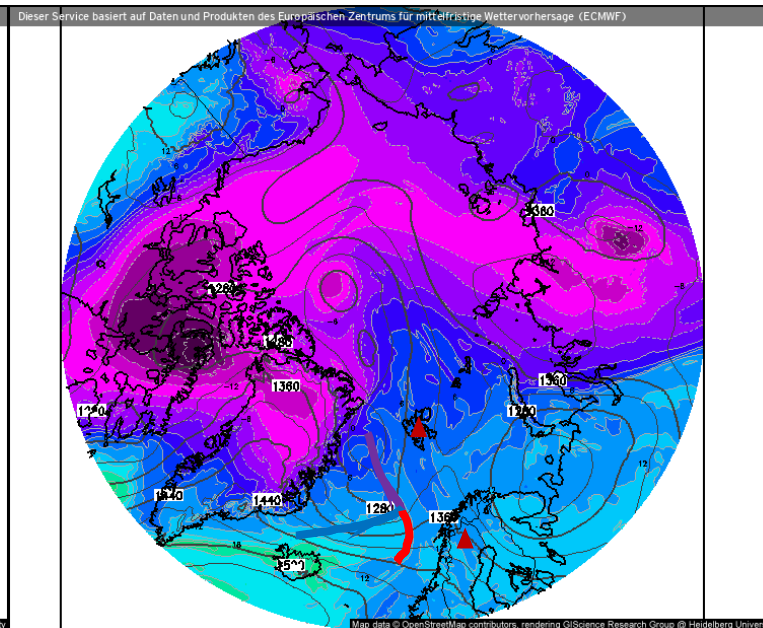


# 01.04.2021 00 UTC

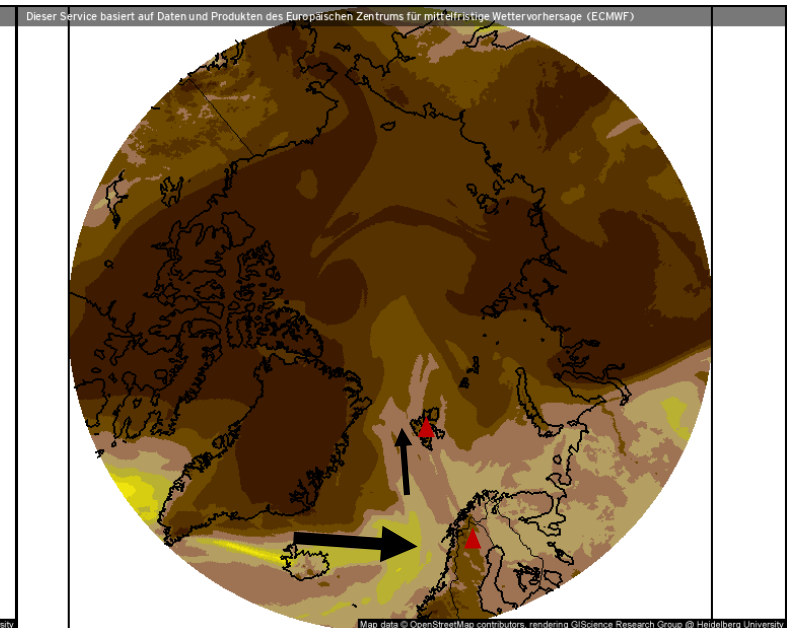
## Wind speed and streamlines



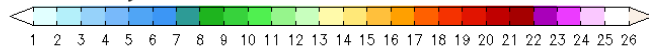
## Theta-E and geopotential (850 hPa)



## Precipitable water

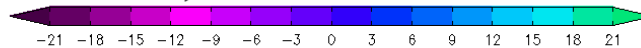


Windrichtung und Windmittel (m/s)



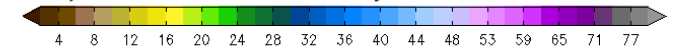
Prognose für Do. 01.04.2021, 02:00 Uhr MESZ

Theta-E und Geopot, 850hPa (°C)



Prognose für Do. 01.04.2021, 02:00 Uhr MESZ

Atmosphärisches Niederschlagswasser (mm)



Prognose für Do. 01.04.2021, 02:00 Uhr MESZ

Nordpol  
ECMWF/Global Euro HD vom 01.04.2021/00Z

ECMWF kachelmannwetter.com  
WETTER HD

Nordpol  
ECMWF/Global Euro HD vom 01.04.2021/00Z

ECMWF kachelmannwetter.com  
WETTER HD

Nordpol  
ECMWF/Global Euro HD vom 01.04.2021/00Z

ECMWF kachelmannwetter.com  
WETTER HD

- Northerly flow west, and southerly flow east of the Low over Fram Strait
- Slight intrusion of moist air into eastern Fram Strait
- Eastward moist air transport over North Atlantic (Iceland towards Scandinavia)



# 01.04.2021 – Situation at the airports

## Longyearbyen



### Svalbard Airport. Longyear

Longyearbyen, Norway

latitude: 78-15N, longitude: 015-28E,  
elevation: 2 m

#### Current weather observation

The report was made 32 minutes ago, at 06:50 UTC

Wind 10 kt from the Southeast

Temperature -1°C

Humidity 69%

Pressure 1001 hPa

Visibility 10 km or more

Scattered clouds at a height of 3500 ft  
Broken clouds at a height of 5500 ft

Time: 09:22 (07:22 UTC)

#### Forecast

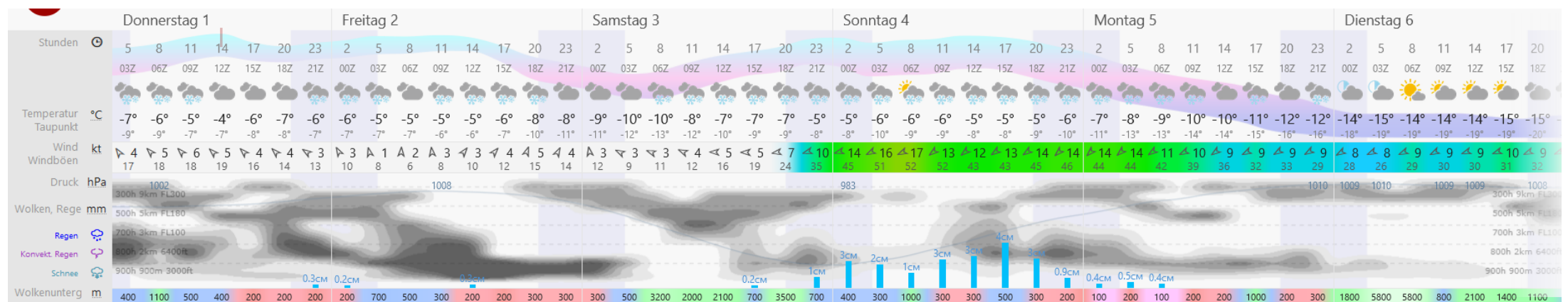
Forecast valid from 01 at 06 UTC to 02 at 06 UTC

Wind 12 kt from the East/Southeast

Visibility 10 km or more

Few clouds at a height of 2000 ft  
Broken clouds at a height of 5000 ft

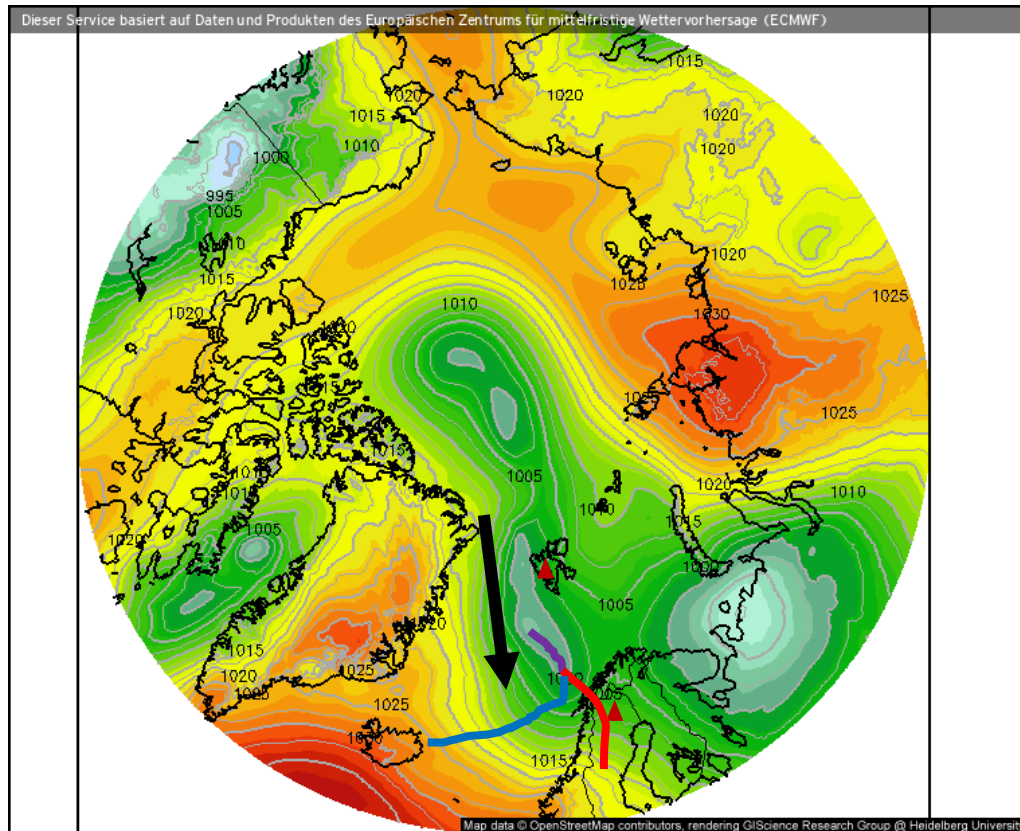
TAF: ENSB 0106/0206 12012KT 9999  
FEW020 BKN050





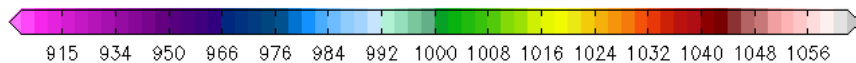
# 01.04.2021 12 UTC

## Surface air pressure



- Low over Fram Strait weakens as it moves eastwards
- High pressure ridge over Greenland
- Northerly flow through the Fram Strait originating the Central Arctic

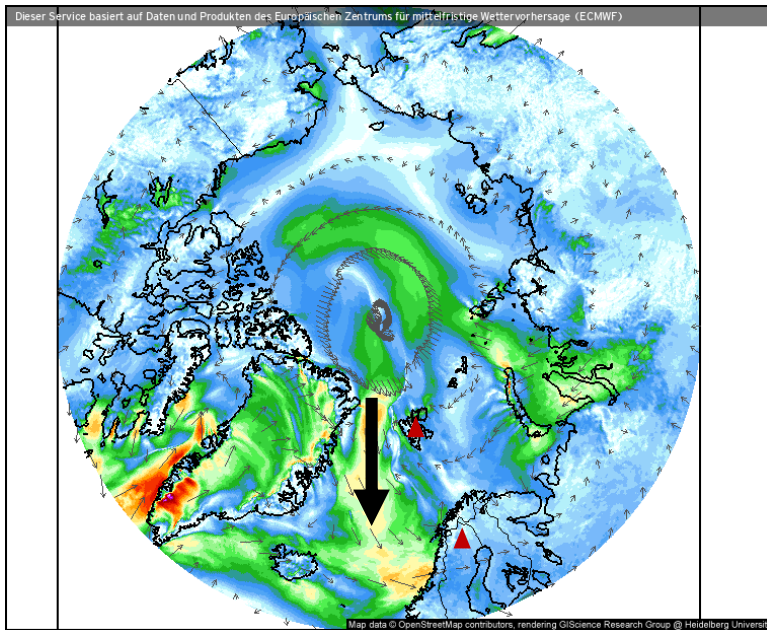
Luftdruck auf Meereshöhe (hPa)



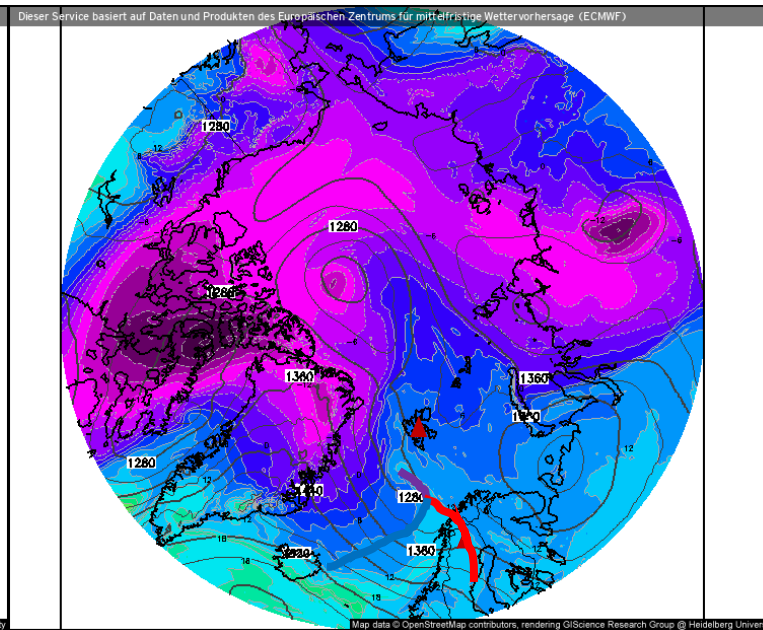
Prognose für  
Do. 01.04.2021, 14:00 Uhr MESZ

# 01.04.2021 12 UTC

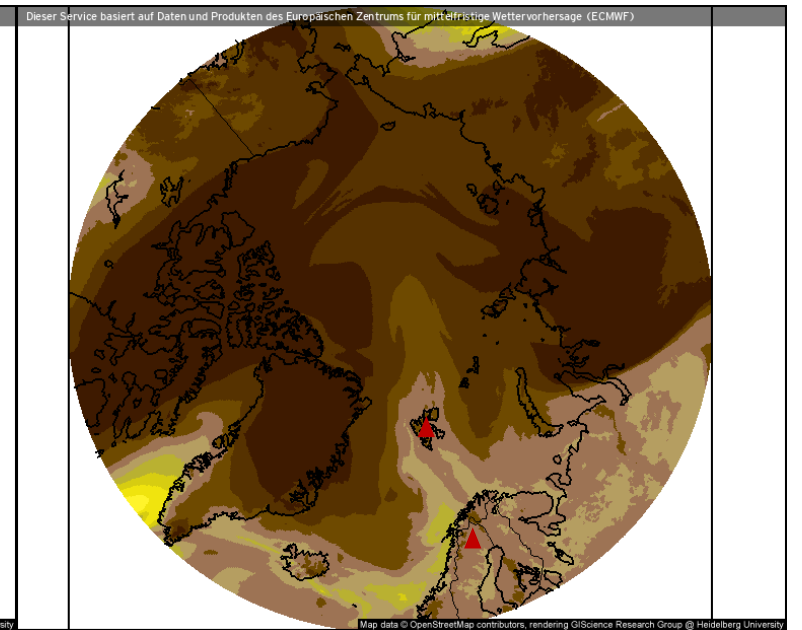
## Wind speed and streamlines



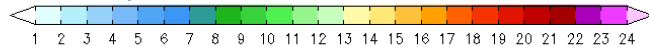
## Theta-E and geopotential (850 hPa)



## Precipitable water



### Windrichtung und Windmittel (m/s)



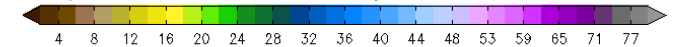
### Prognose für Do. 01.04.2021, 14:00 Uhr MESZ

### Theta-E und Geopot, 850hPa (°C)



### Prognose für Do. 01.04.2021, 14:00 Uhr MESZ

### Atmosphärisches Niederschlagswasser (mm)



### Prognose für Do. 01.04.2021, 14:00 Uhr MESZ

Nordpol  
ECMWF/Global Euro HD vom 01.04.2021/12z

ECMWF kachelmannwetter.com  
WETTER HD

Nordpol  
ECMWF/Global Euro HD vom 01.04.2021/12z

ECMWF kachelmannwetter.com  
WETTER HD

Nordpol  
ECMWF/Global Euro HD vom 01.04.2021/12z

ECMWF kachelmannwetter.com  
WETTER HD

- Northerly wind in the Fram Strait
- No significant intrusion of moisture

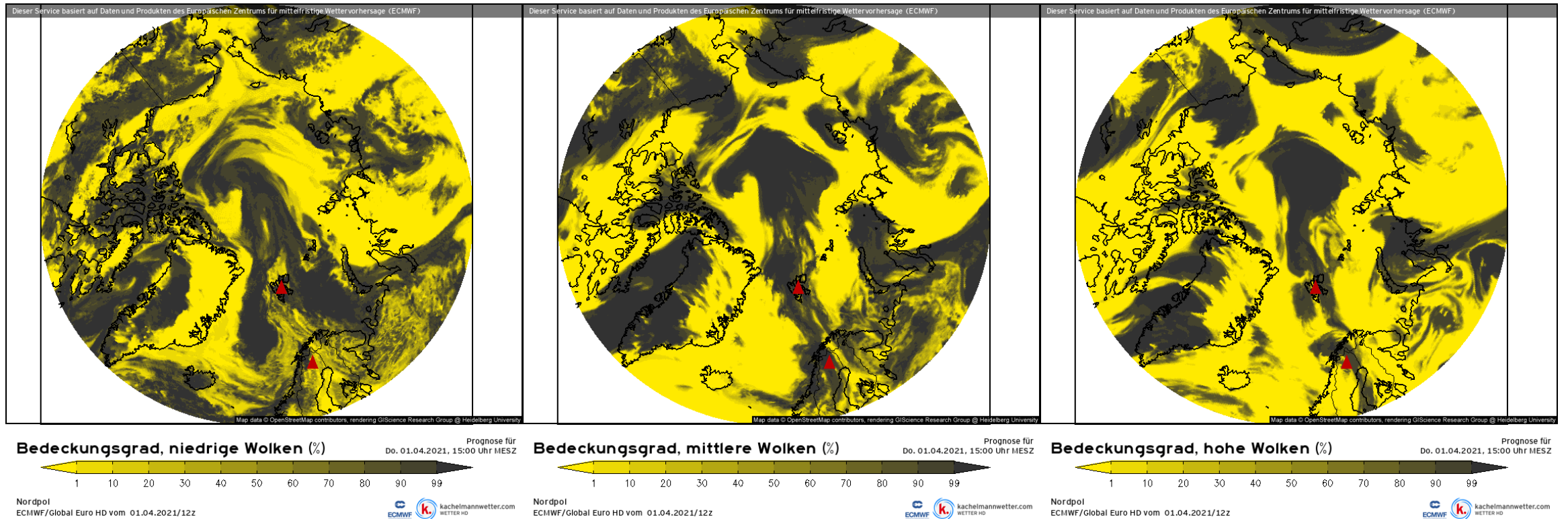


# 01.04.2021 13 UTC

## Low-level clouds

## Mid-level clouds

## High-level clouds



- Lots of low-level clouds around Svalbard (especially east and west)
- Mid- and high-level cloud band over Svalbard and Kiruna (frontal clouds)

01.04.2021: some off-ice flow with roll clouds

