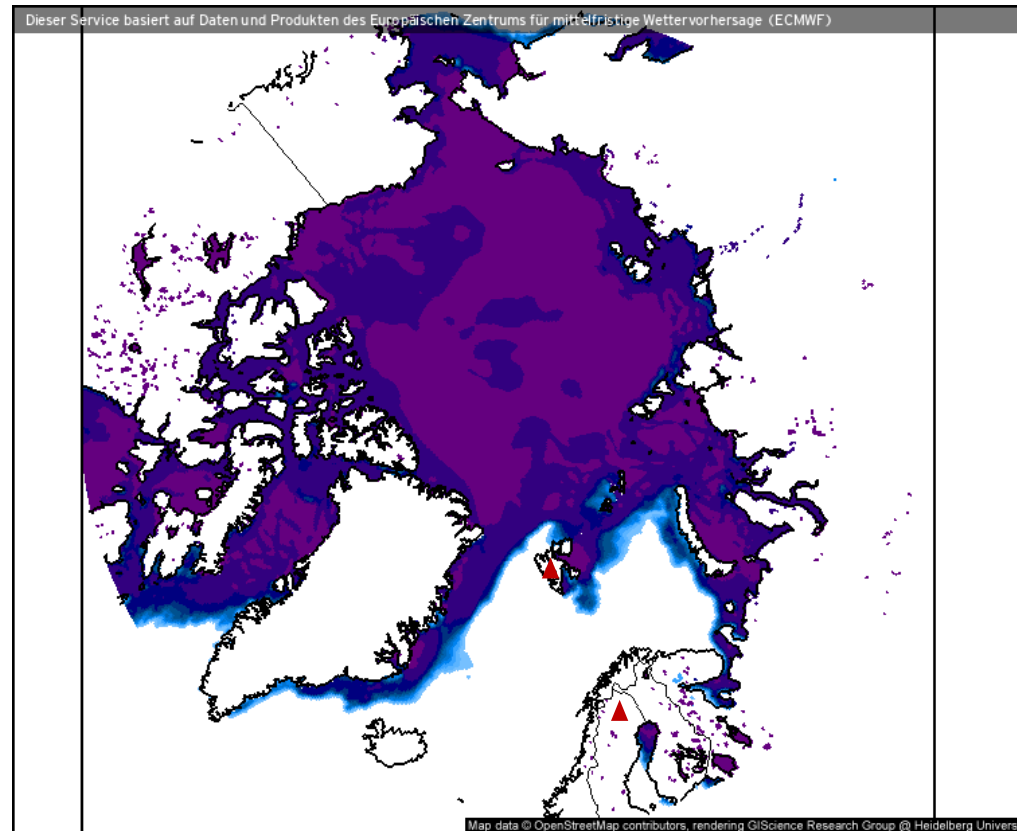


Weather observations
29.03.2021

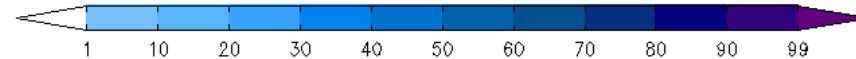
29.03.2021 00 UTC

Sea ice fraction



Eisbedeckung (Meere und Seen) (%)

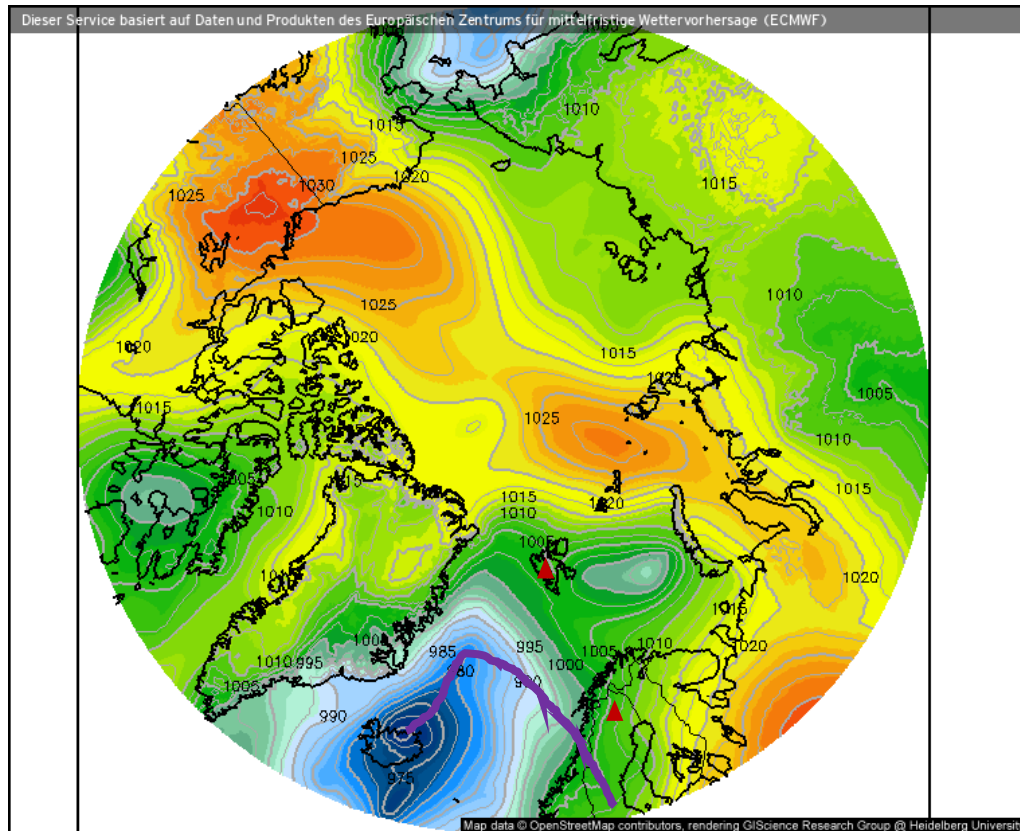
Prognose für
Mo. 29.03.2021, 02:00 Uhr MESZ



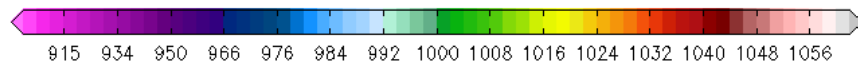
Nordpol
ECMWF/Global Euro HD vom 29.03.2021/00z

29.03.2021 00 UTC

Surface air pressure



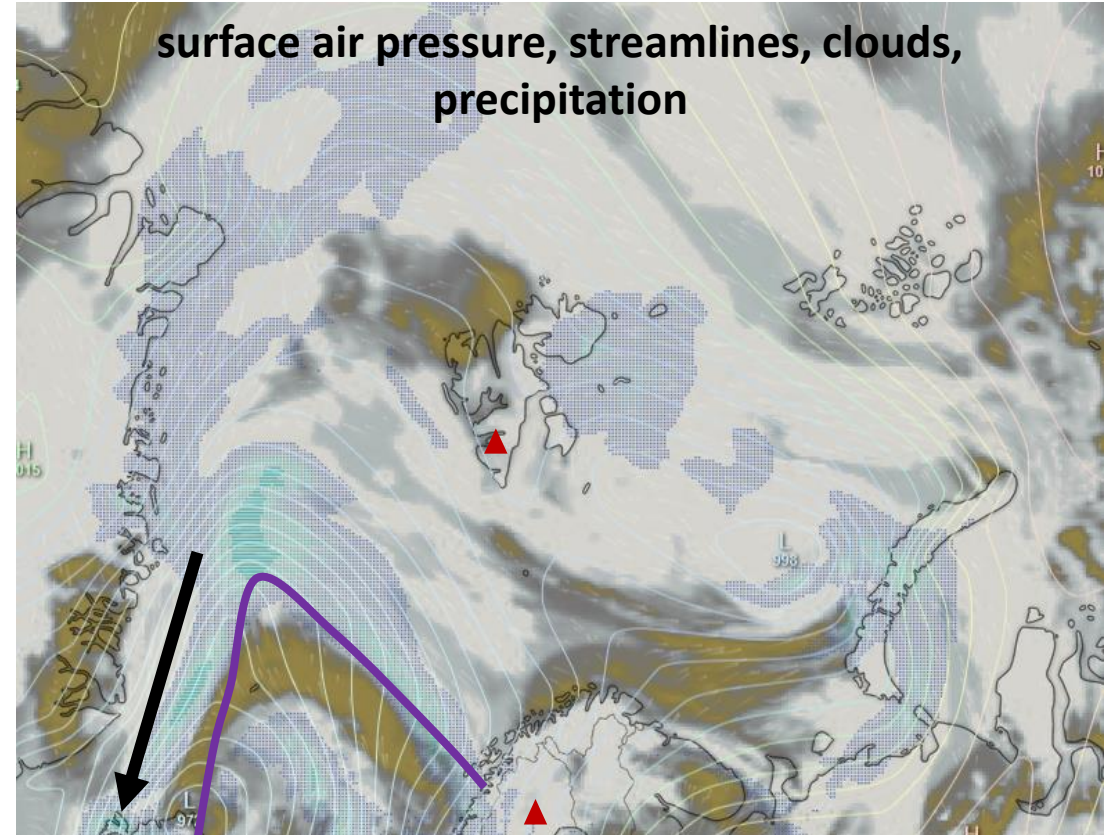
Luftdruck auf Meereshöhe (hPa)



Nordpol
ECMWF/Global Euro HD vom 29.03.2021/00Z

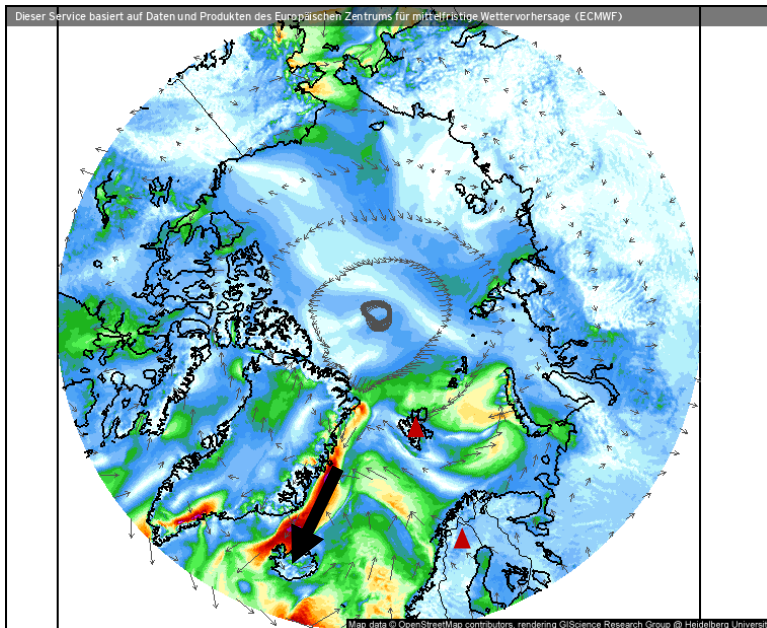
Prognose für
Mo. 29.03.2021, 02:00 Uhr MESZ

- Low over Iceland
- southward cold air transport along the ice edge west of Low

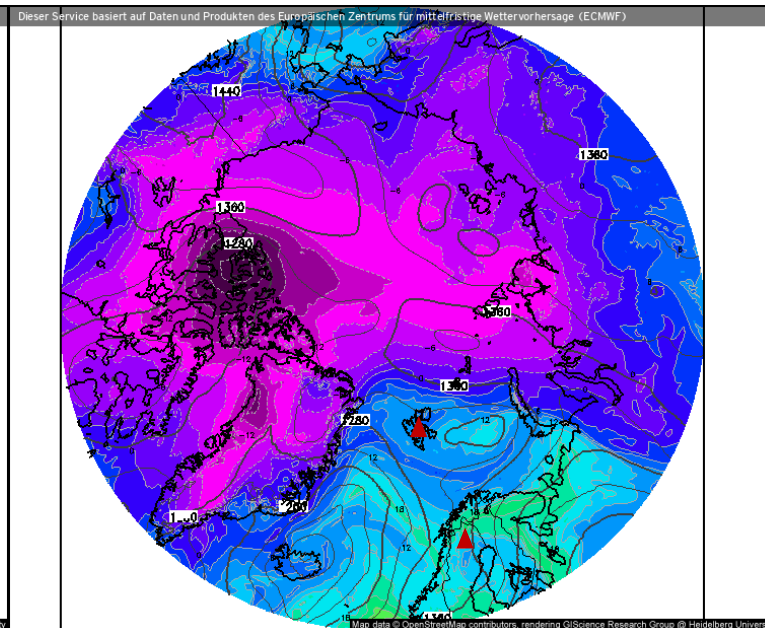


29.03.2021 00 UTC

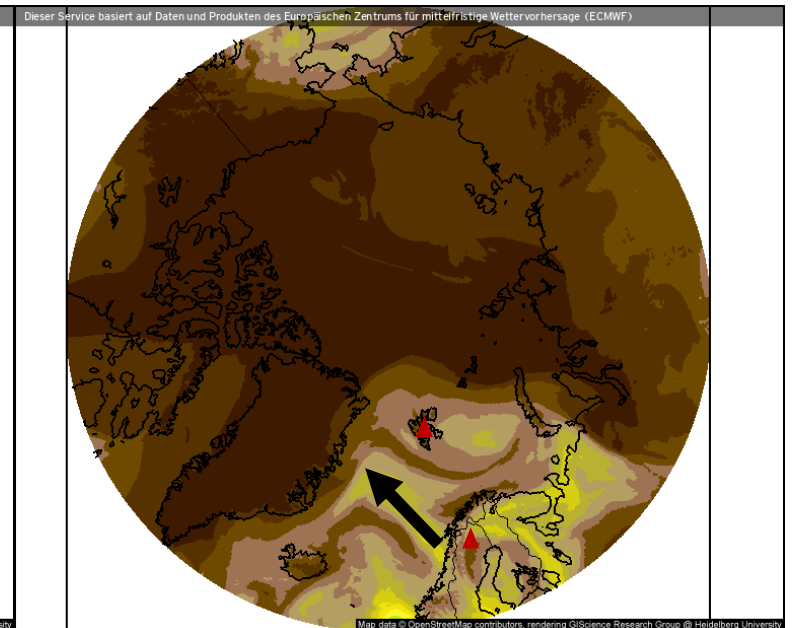
Wind speed and streamlines



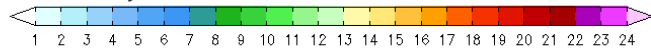
Theta-E and geopotential (850 hPa)



Precipitable water

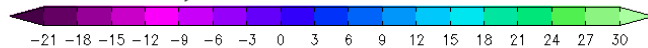


Windrichtung und Windmittel (m/s)



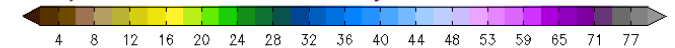
Prognose für Mo. 29.03.2021, 02:00 Uhr MESZ

Theta-E und Geopot, 850hPa (°C)



Prognose für Mo. 29.03.2021, 02:00 Uhr MESZ

Atmosphärisches Niederschlagswasser (mm)



Prognose für Mo. 29.03.2021, 02:00 Uhr MESZ

Nordpol
ECMWF/Global Euro HD vom 29.03.2021/00z

ECMWF kachelmannwetter.com
WETTER HD

Nordpol
ECMWF/Global Euro HD vom 29.03.2021/00z

ECMWF kachelmannwetter.com
WETTER HD

Nordpol
ECMWF/Global Euro HD vom 29.03.2021/00z

ECMWF kachelmannwetter.com
WETTER HD

- No strong winds around Svalbard
- Moist air advection over Atlantic from North Norway to Greenland

29.03.2021 – Situation at the airports

Longyearbyen



Svalbard Airport. Longyear

Longyearbyen, Norway

latitude: 78-15N, longitude: 015-28E,
elevation: 2 m

Current weather observation

The report was made **34** minutes ago, at **06:20** UTC

Wind **2** kt from variable directions

Temperature **-3°C**

Humidity **74%**

Pressure **1004** hPa

Visibility **10** km or more

Few clouds at a height of **3000** ft

Change units

Time: 08:54 (06:54 UTC)

Forecast

Forecast valid from 29 at 06 UTC to 30 at 06 UTC

Wind **12** kt from the **East/Southeast**

Visibility **10** km or more

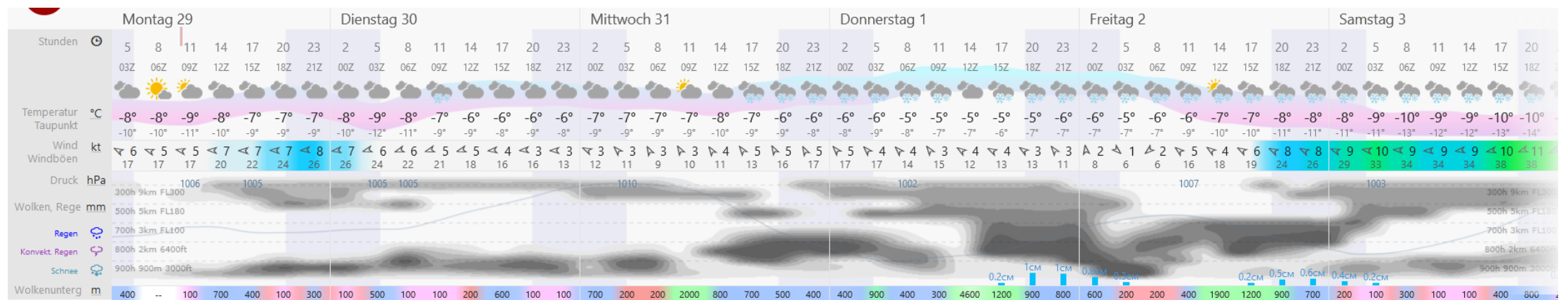
Few clouds at a height of **2000** ft

Becoming
from 29 at 08 UTC to 29 at 10 UTC

Wind **22** kt from the **South/Southeast**

Temporary
from 29 at 16 UTC to 29 at 24 UTC

Wind **25** kt from the **South/Southeast** with gusts up to **35** kt



29.03.2021 – Situation at the airports

Kiruna

Kiruna Airport

Kiruna, Sweden
 latitude: 67-49N, longitude: 020-20E,
 elevation: 452 m

Current weather observation

The report was made **19** minutes ago, at **07:20** UTC

Wind **11** kt from the **South**, varying between **Southeast and South**

Temperature **0°C**

Humidity **86%**

Pressure **999** hPa

Visibility **10** km or more

[Change units](#)

Time: 09:39 (07:39 UTC)

Forecast

The report was made **5** hours and **9** minutes ago, at **02:30** UTC

Forecast valid from 29 at 03 UTC to 29 at 06 UTC

Wind **12** kt from the **South**

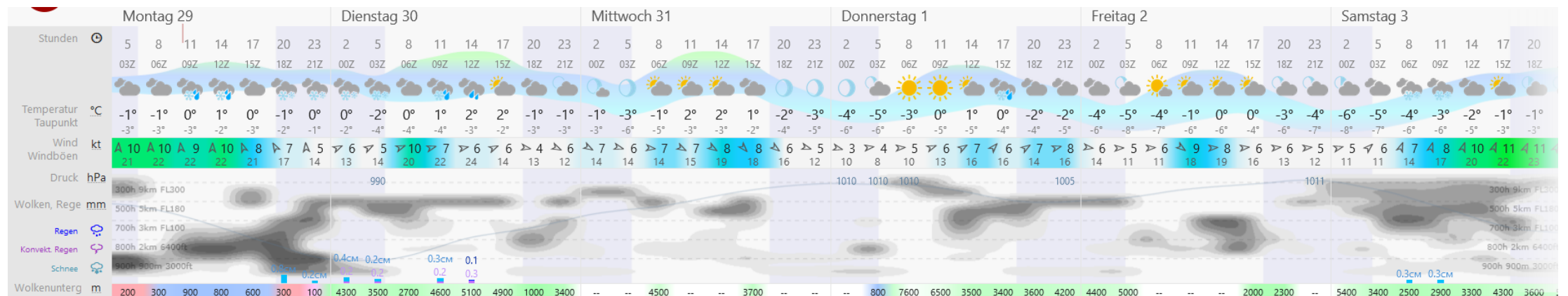
Visibility **10** km or more

Broken clouds at a height of **1200** ft

Temporary
 from 29 at 03 UTC to 29 at 06 UTC

Broken clouds at a height of **1500** ft

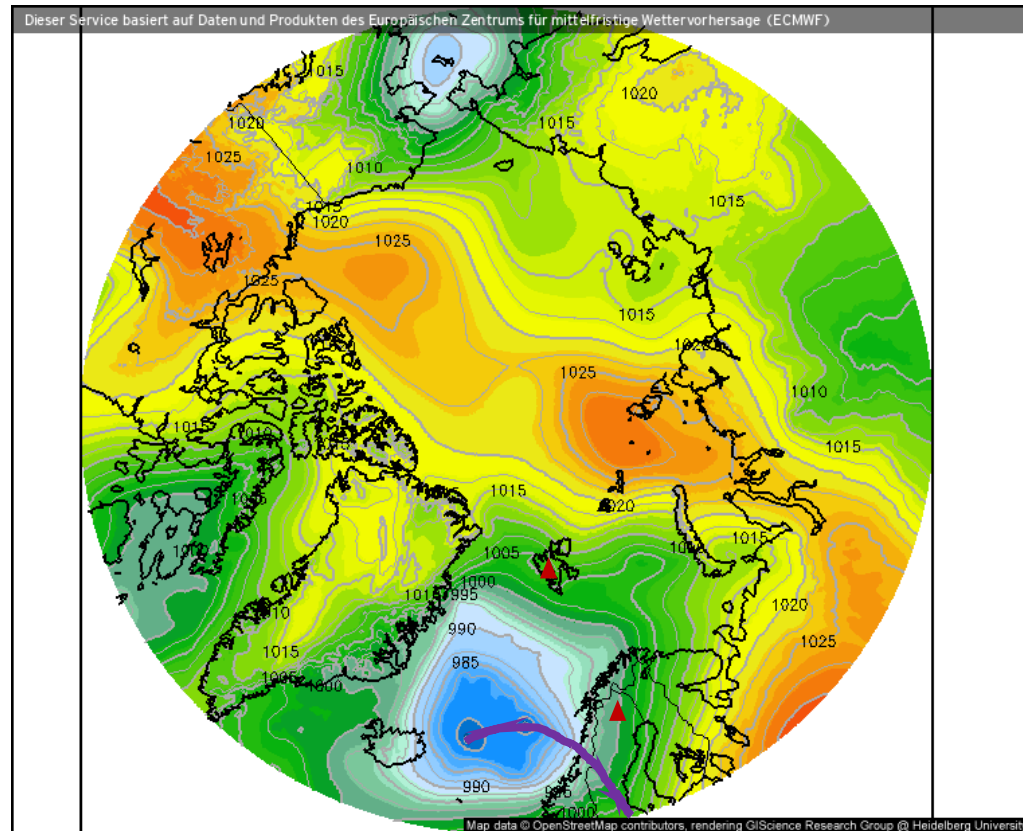
TAF: ESNQ 290230Z 2903/2906 18012KT
 9999 BKN012 TEMPO 2903/2906 BKN015



29.03.2021 12 UTC

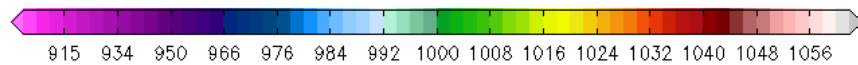
Surface air pressure

- Low weakens as it moves eastward



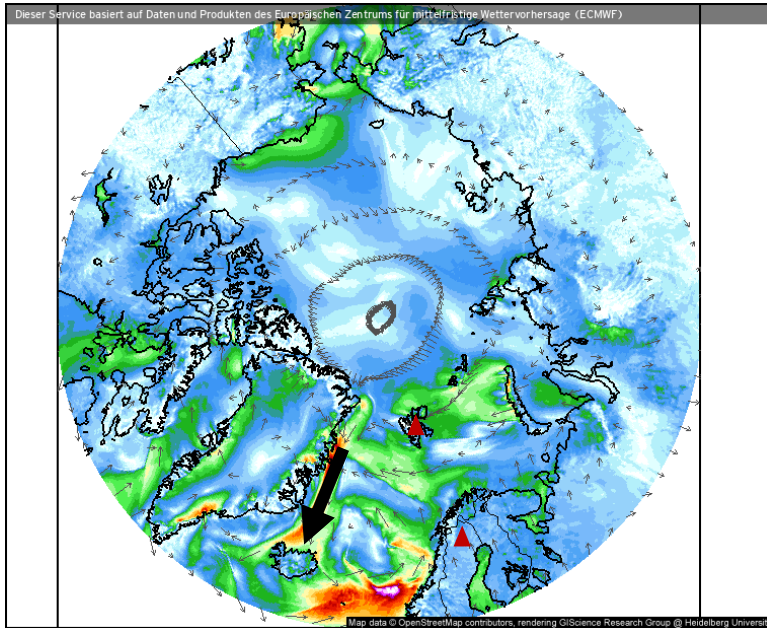
Luftdruck auf Meereshöhe (hPa)

Prognose für
Mo. 29.03.2021, 14:00 Uhr MESZ

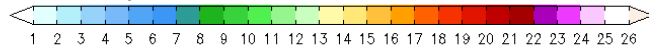


29.03.2021 12 UTC

Wind speed and streamlines



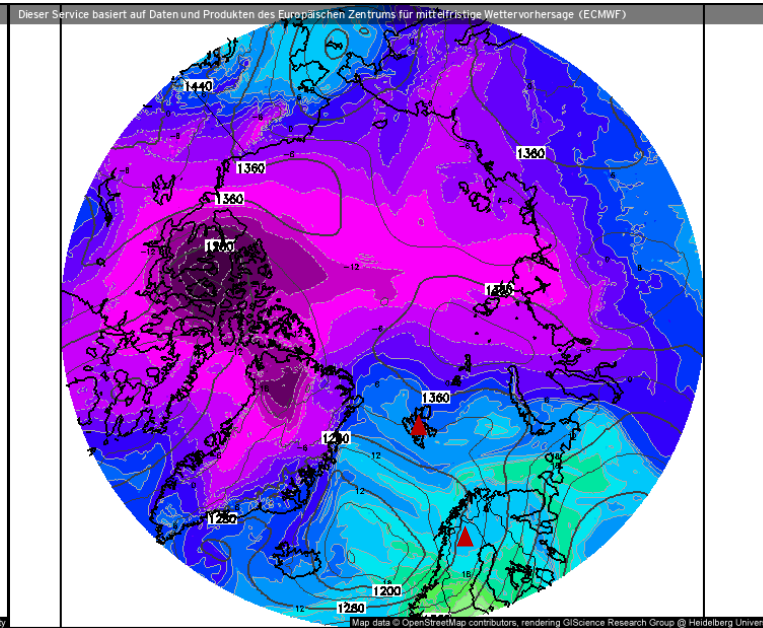
Windrichtung und Windmittel (m/s)



Nordpol
ECMWF/Global Euro HD vom 29.03.2021/12z

Prognose für
Mo. 29.03.2021, 14:00 Uhr MESZ
ECMWF kachelmannwetter.com
WETTER HD

Theta-E and geopotential (850 hPa)



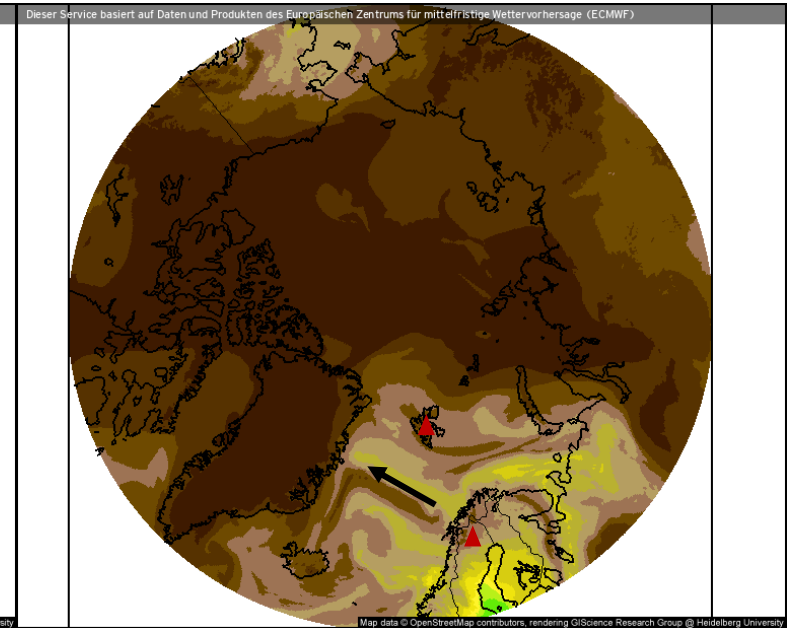
Theta-E und Geopot, 850hPa (°C)



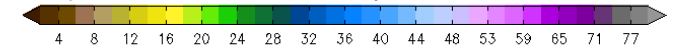
Nordpol
ECMWF/Global Euro HD vom 29.03.2021/12z

Prognose für
Mo. 29.03.2021, 14:00 Uhr MESZ
ECMWF kachelmannwetter.com
WETTER HD

Precipitable water



Atmosphärisches Niederschlagswasser (mm)



Nordpol
ECMWF/Global Euro HD vom 29.03.2021/12z

Prognose für
29.03.2021, 14:00 Uhr MESZ
ECMWF kachelmannwetter.com
WETTER HD

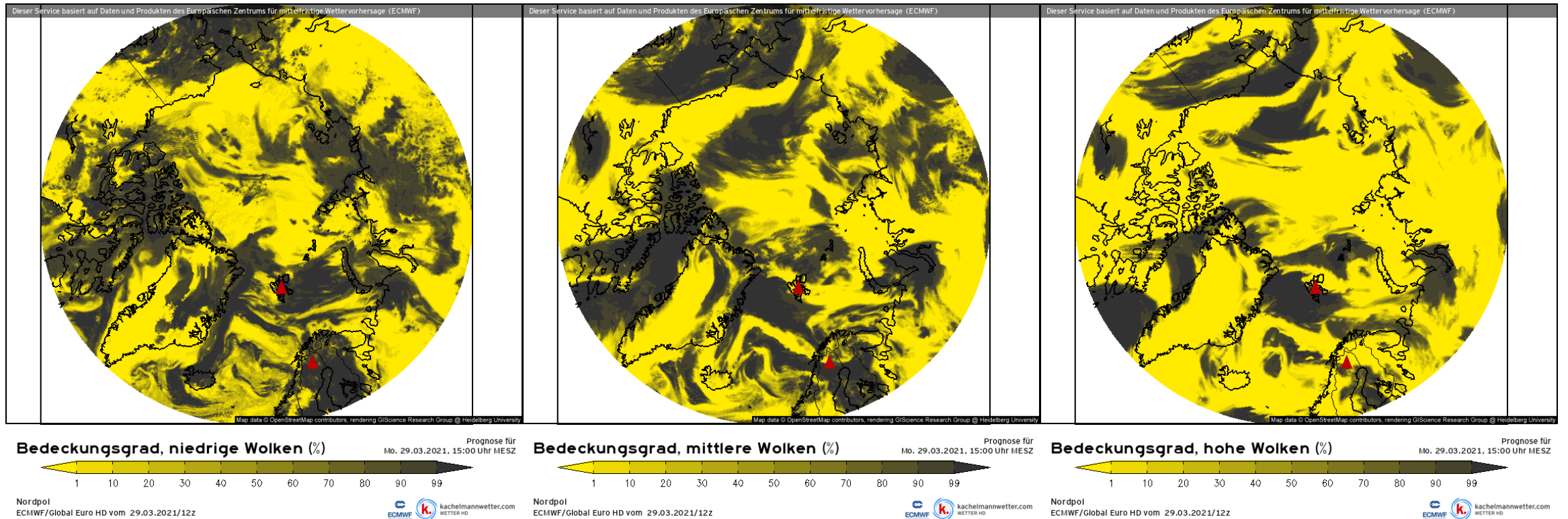
- Northerly wind west of the low weakens
- Moist air advection over North Atlantic weakens

29.03.2021 13 UTC

Low-level clouds

Mid-level clouds

High-level clouds



- Lots of low-level clouds especially east of Svalbard
- Mid- and high-level clouds southwest of Svalbard in the moist air, but also to the North

29.03.2021

