

Weather update

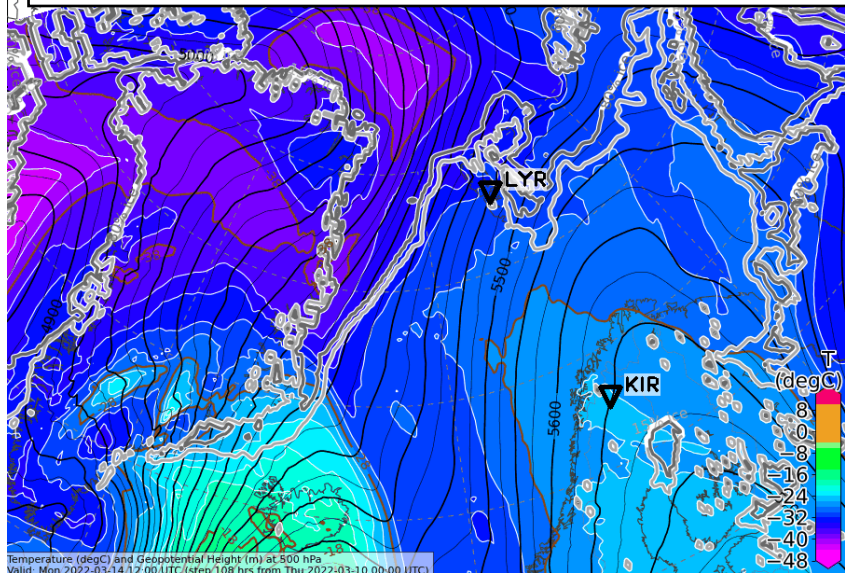
HALO-(AC)³

Friday, 2022-03-11, 09:00 LT

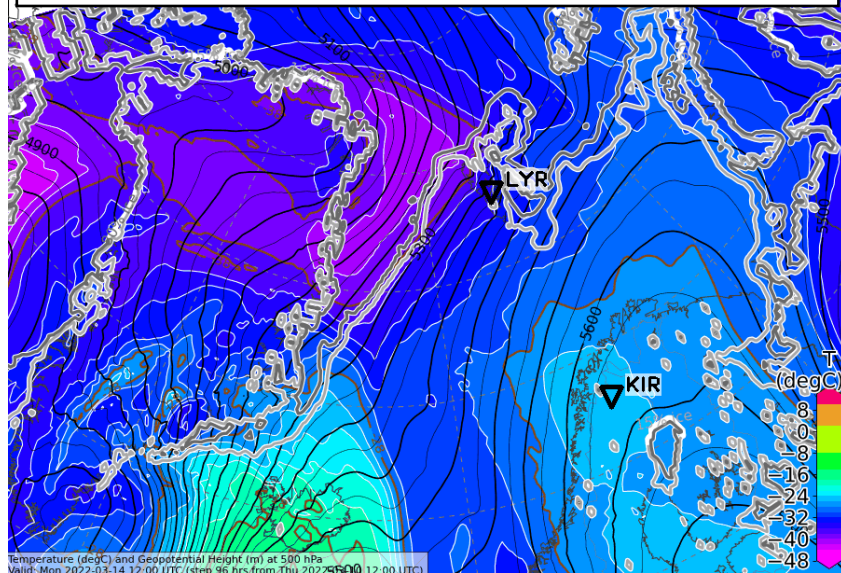
Forecast comparison yesterday 00 UTC vs. 12 UTC

Mon, 2022-03-14 12 UTC (+84h)

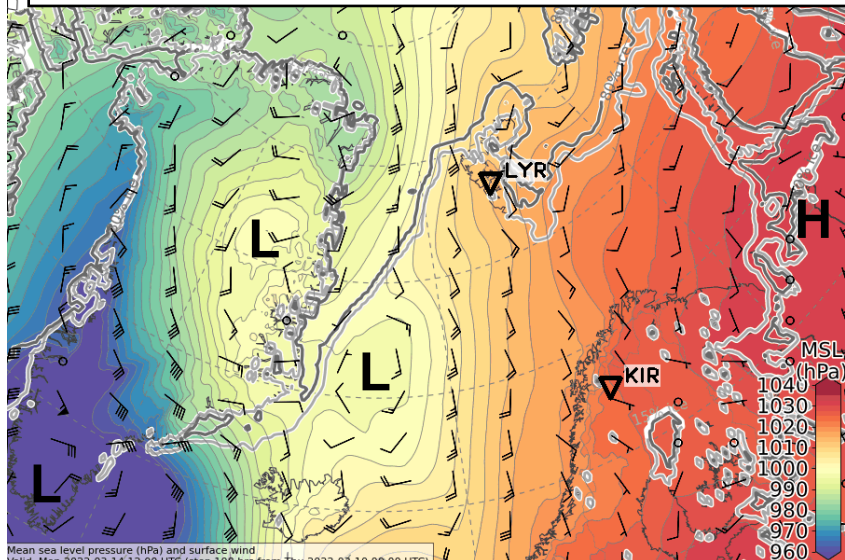
500 hPa Geopot. and T (yest. 00 UTC)



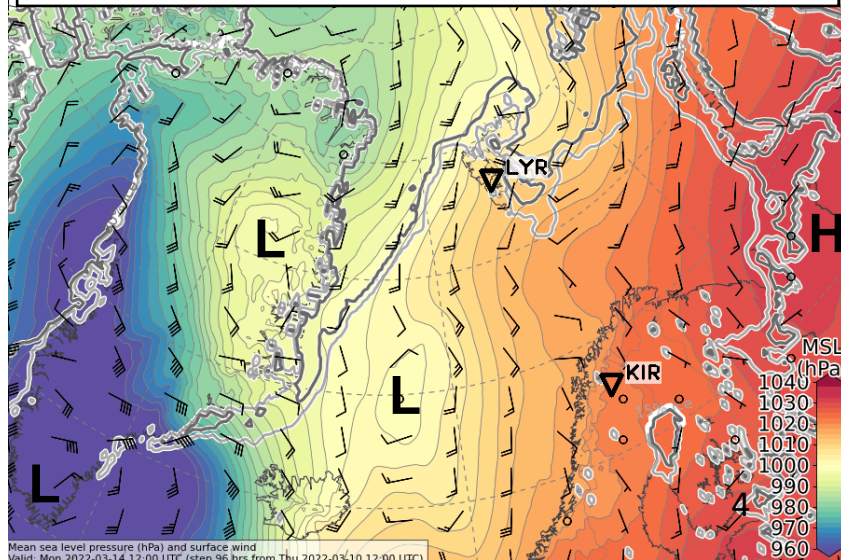
500 hPa Geopot. and T (yest. 12 UTC)



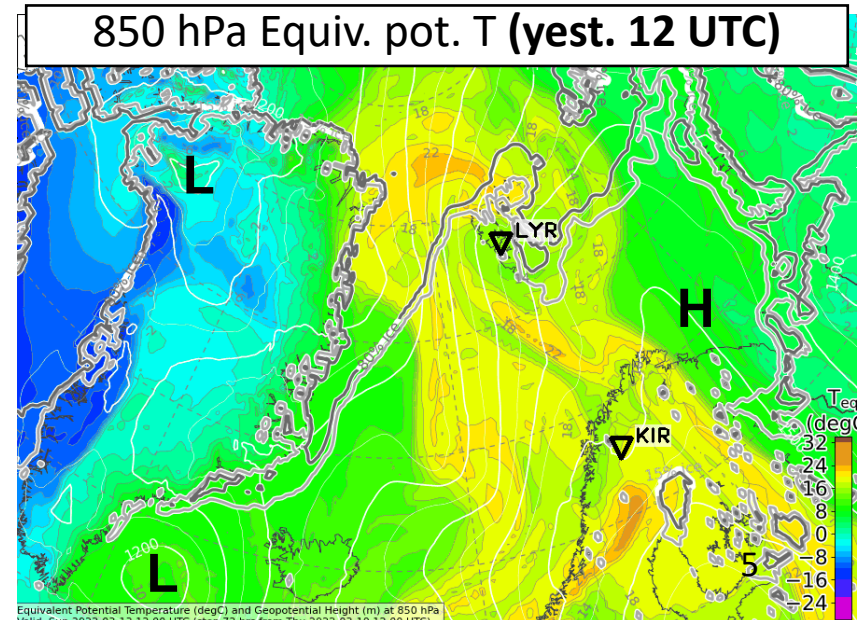
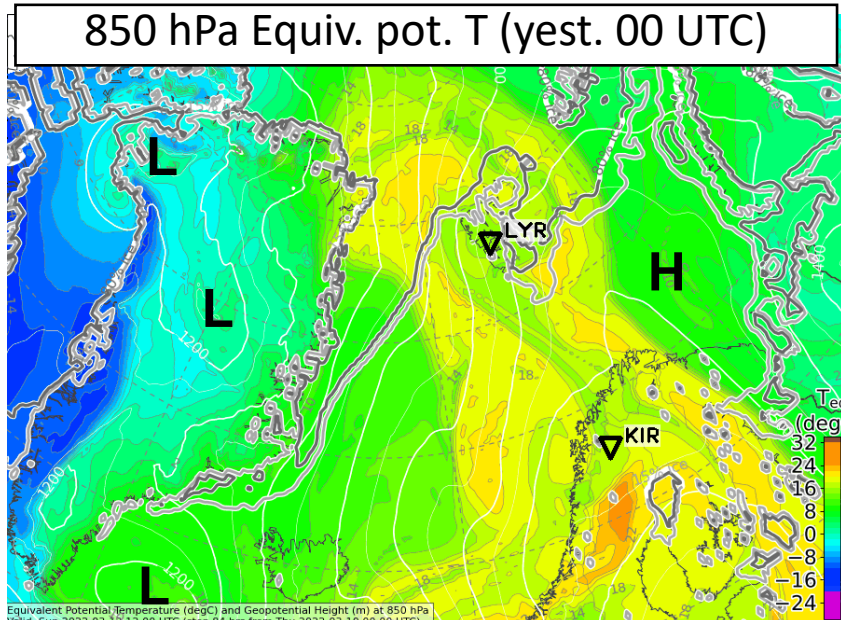
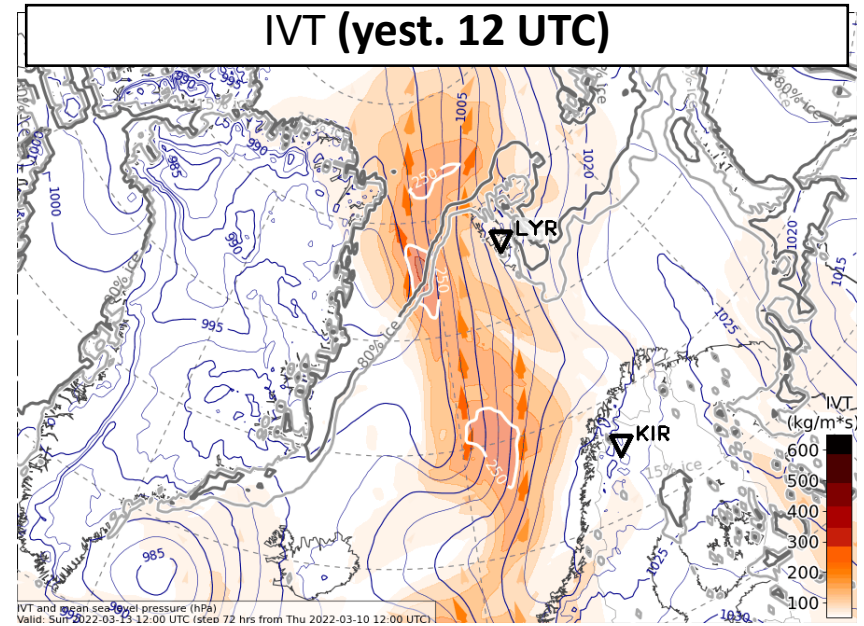
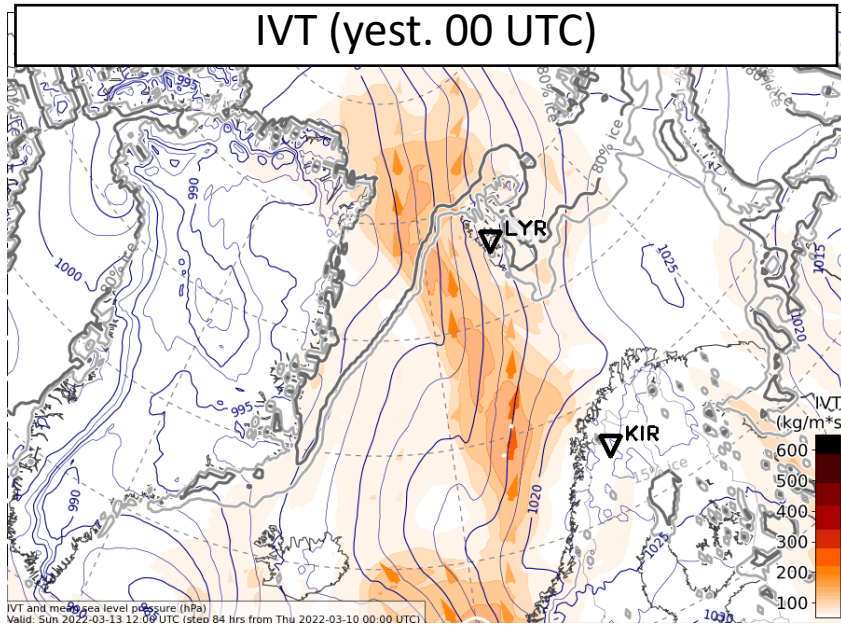
Sea level pressure (yest. 00UTC)



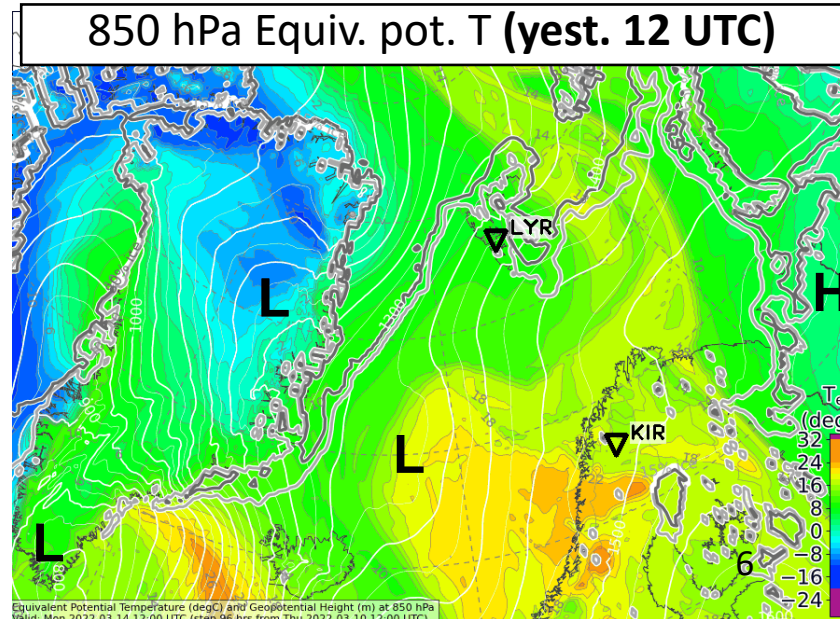
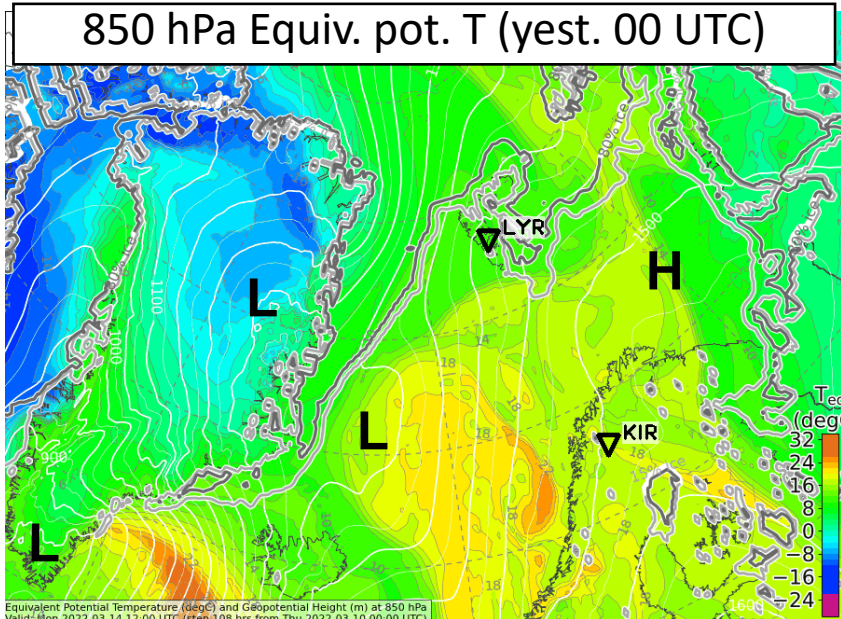
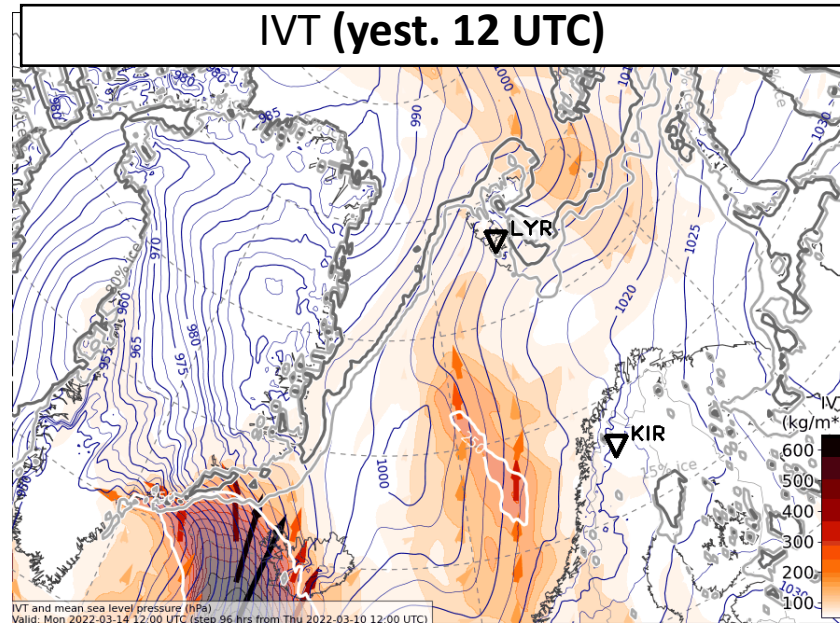
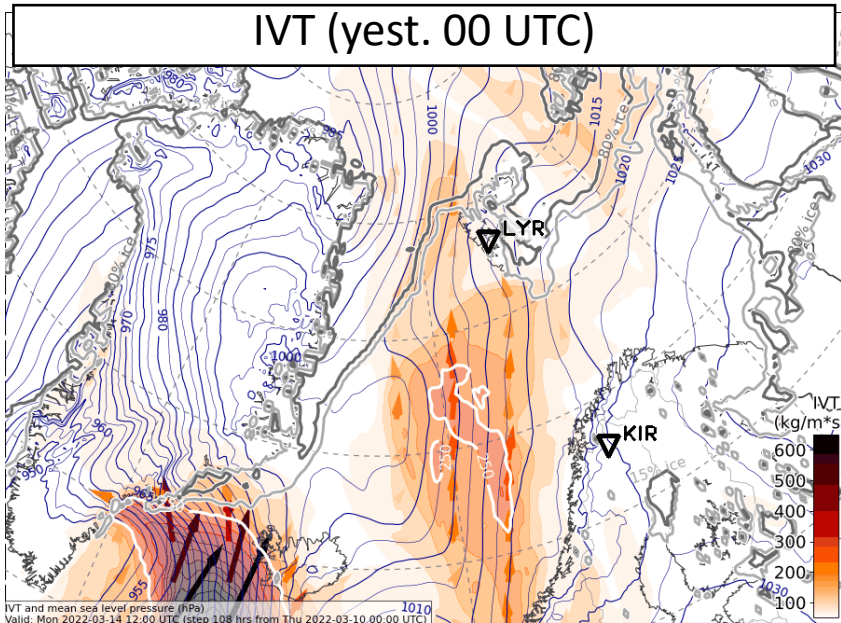
Sea level pressure (yest. 12 UTC)



Sun, 2022-03-13 12 UTC (+60h)



Mon, 2022-03-14 12 UTC (+84h)



Detailed outlook for Sunday & Monday

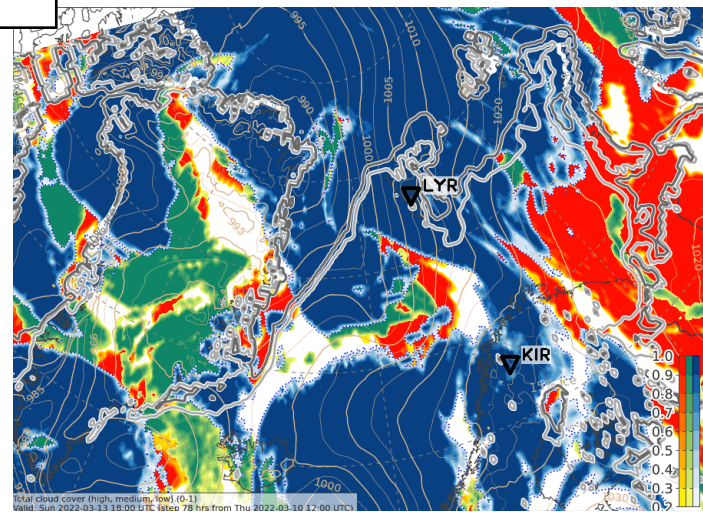
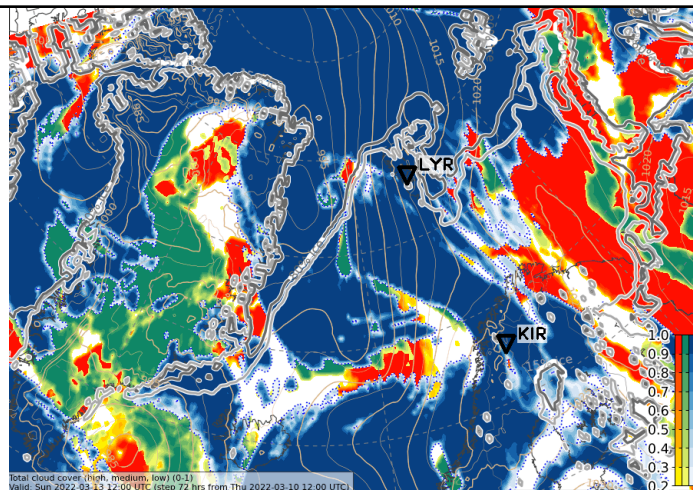
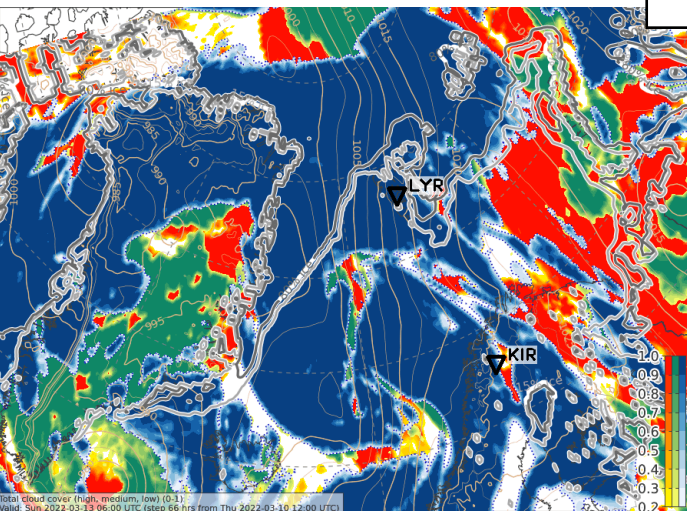
2022-03-10 12 UTC: 66h - 102h

500 hPa Geopot & T

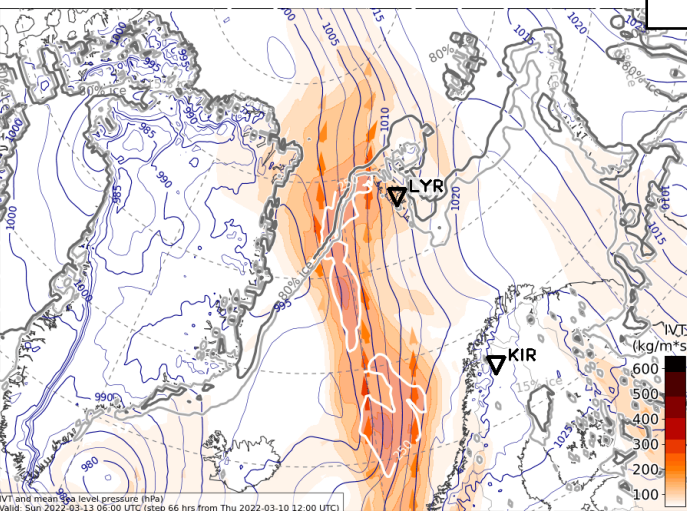
Sea level pressure

Sun, 2022-03-13 12 UTC (66h - 78h)

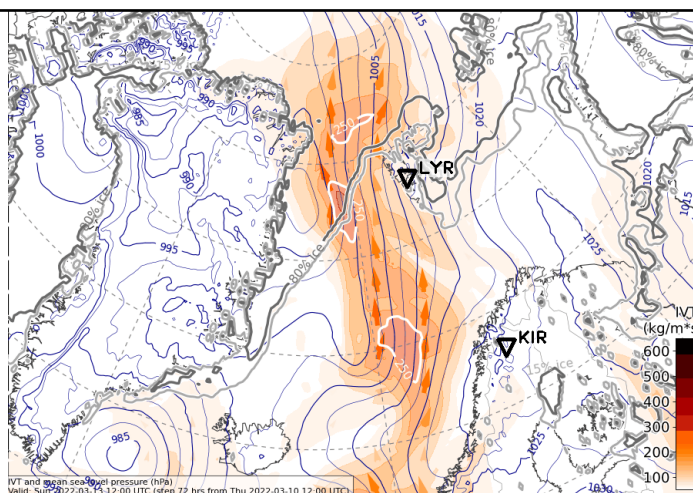
Total Cloud Cover



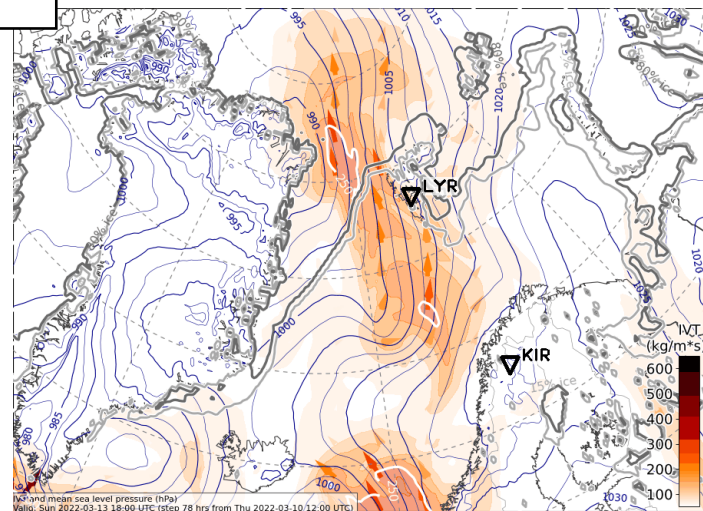
IVT



06 UTC



12 UTC

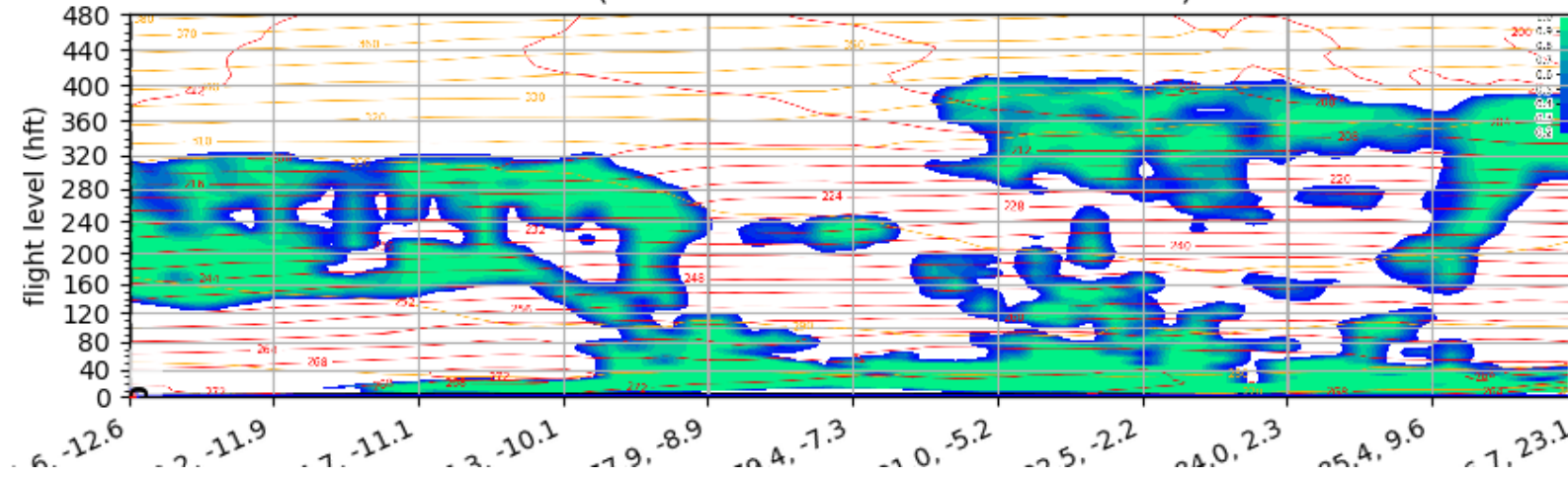


18 UTC

Sun, 2022-03-13 12 UTC

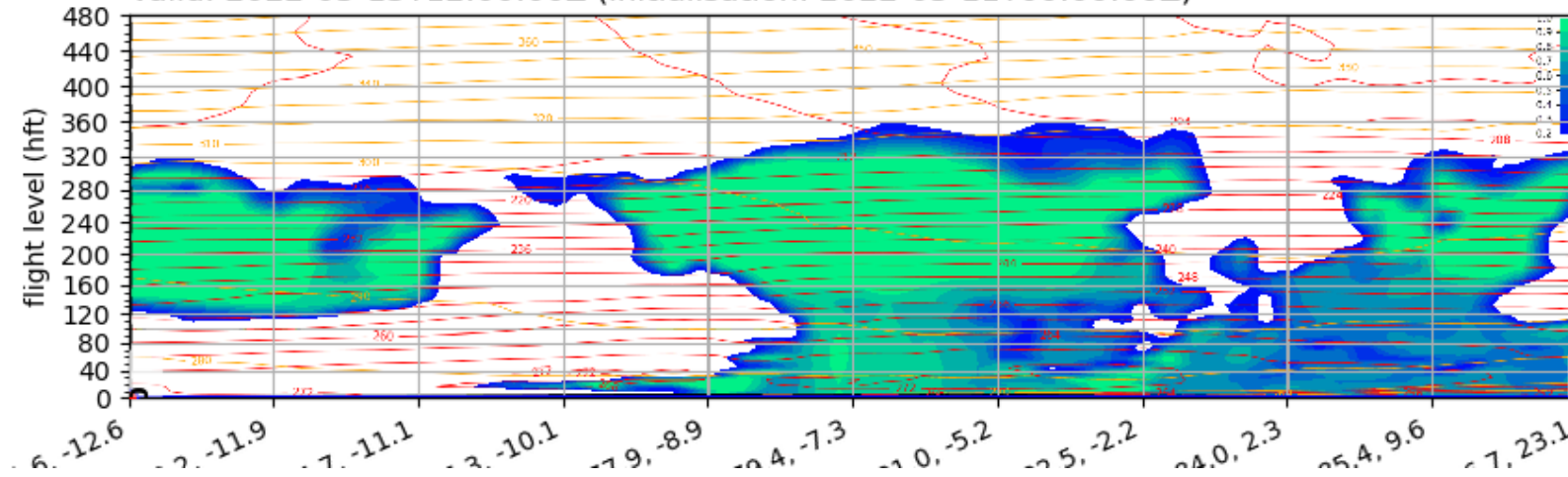
ECMWF

Valid: 2022-03-13T12:00:00Z (initialisation: 2022-03-10T12:00:00Z)

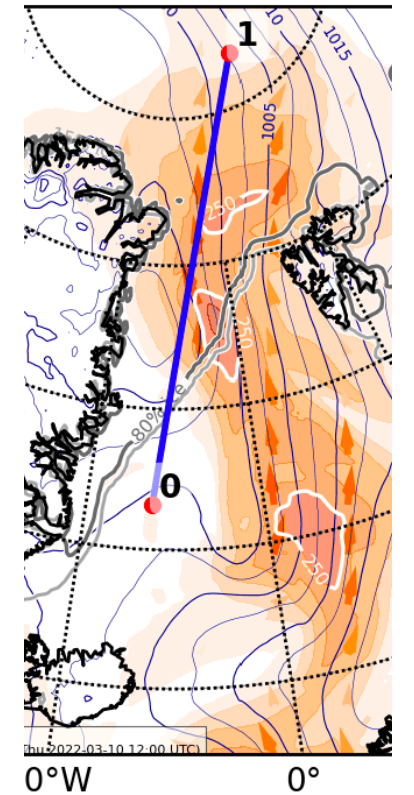


ICON

Valid: 2022-03-13T12:00:00Z (initialisation: 2022-03-11T00:00:00Z)

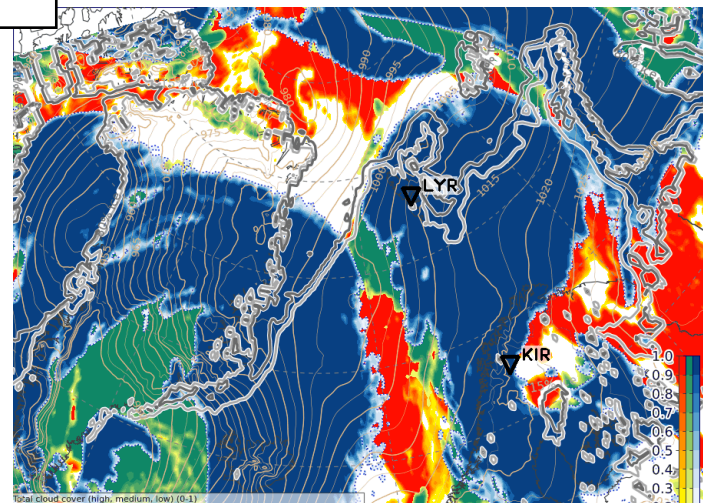
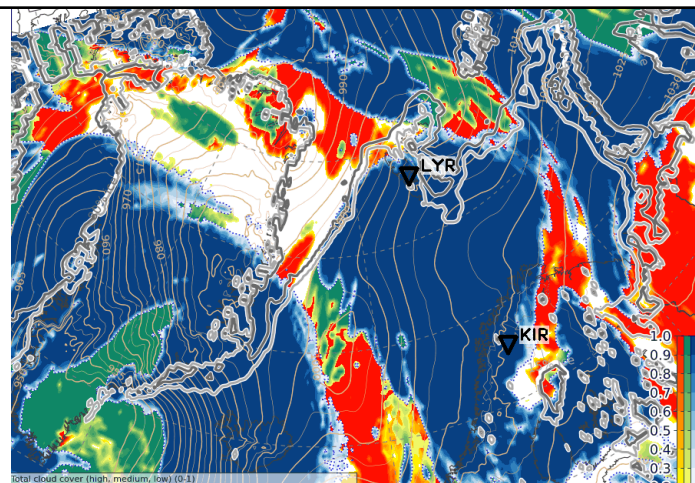
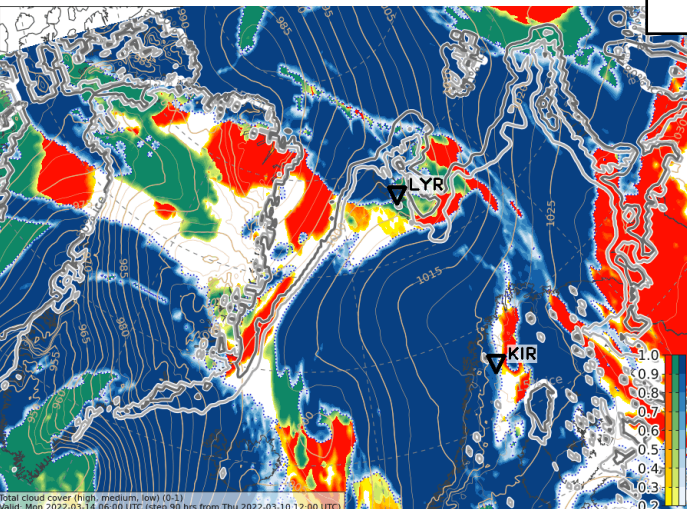


Wind Mean Sea Level T12:00:00Z (initiali

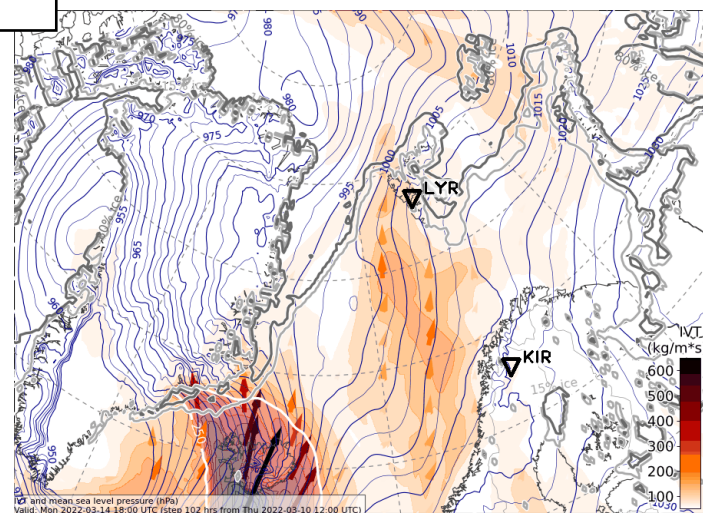
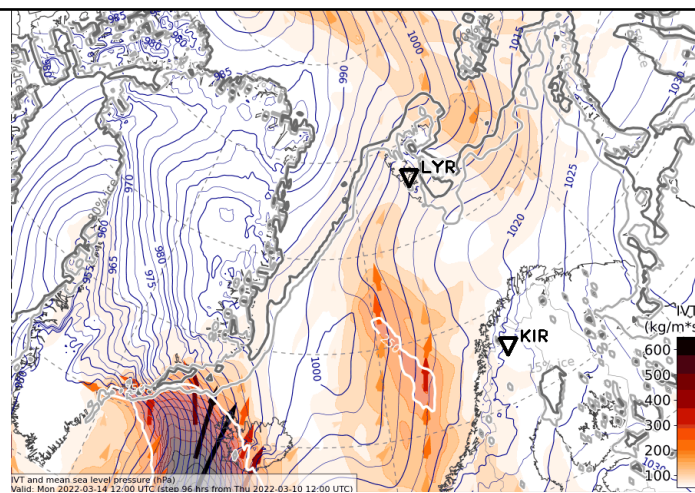
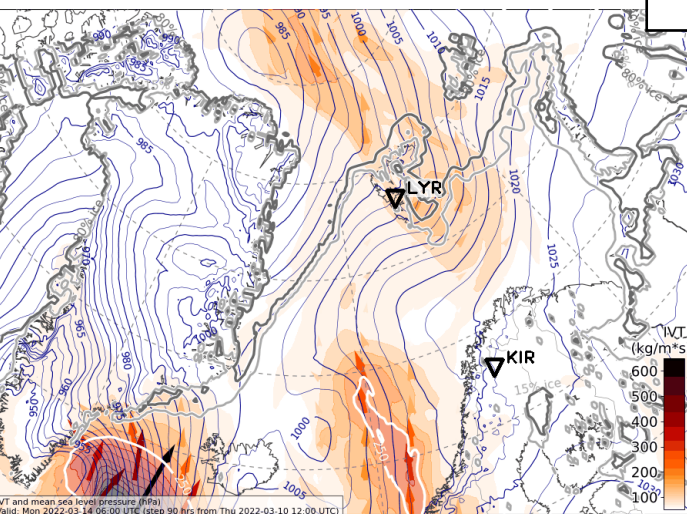


Mon, 2022-03-14 12 UTC (90h - 102h)

Total Cloud Cover



IVT



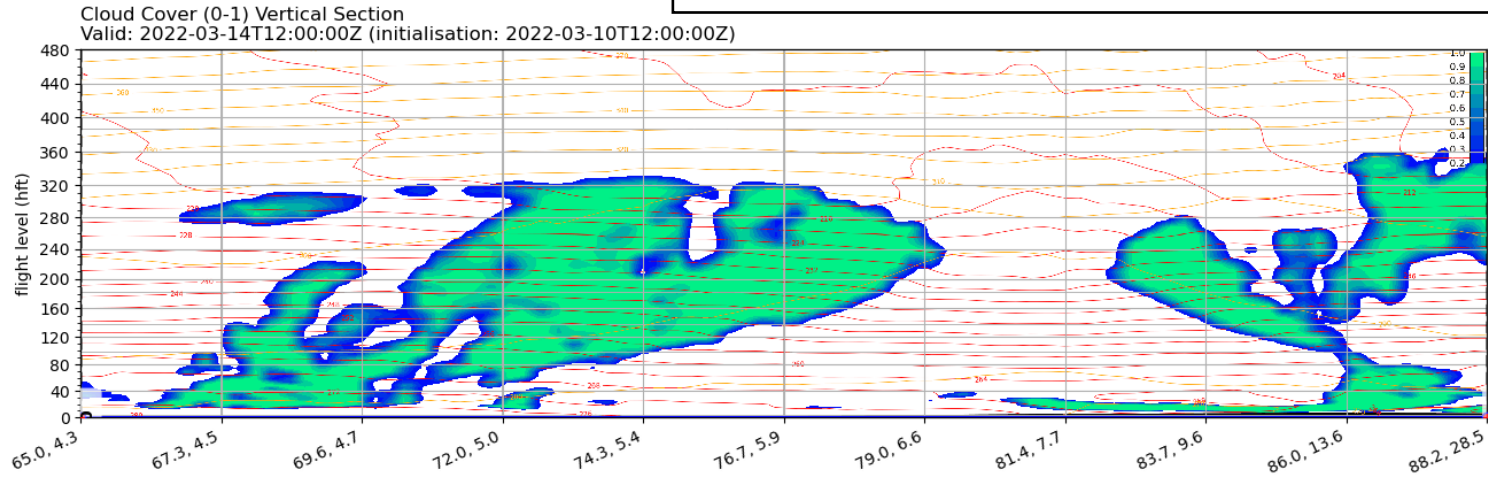
06 UTC

12 UTC

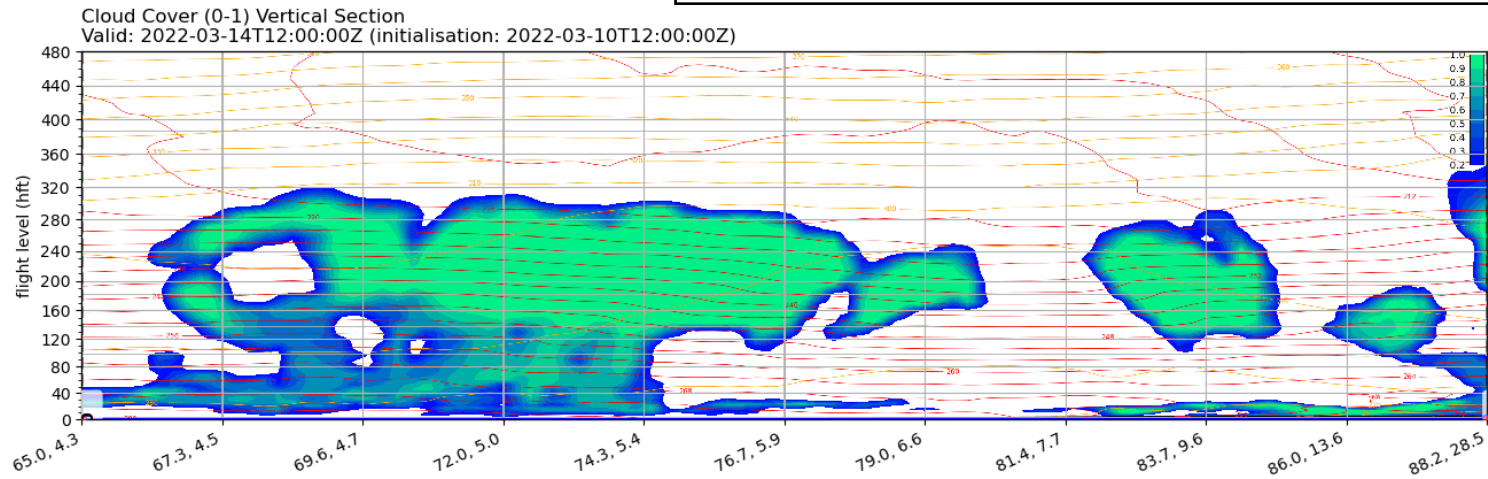
18 UTC

Mon, 2022-03-14 12 UTC

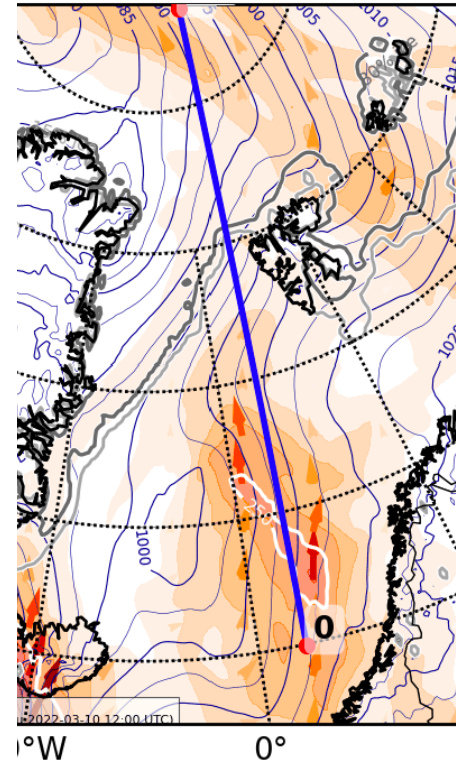
ECMWF



ICON



nd Mean Sea Level Pres:
T12:00:00Z (initialisation



Summary

Summary: Weather Update 2022-03-11, 09:00 LT

- **Sunday, 2022-03-13:**
 - General circulation pattern with pronounced S-N flow unchanged
 - Small low pressure perturbation over ocean causes stronger pressure gradients / winds
 - Bigger areas of warm and moist airmasses
 - WAI is more intense and spatially more extended
- **Monday, 2022-03-14:**
 - Orientation of S-N flow slightly changed to SW-NE flow
 - Surface low less intense and more towards east
 - WAI less intense (especially over Fram Strait)