

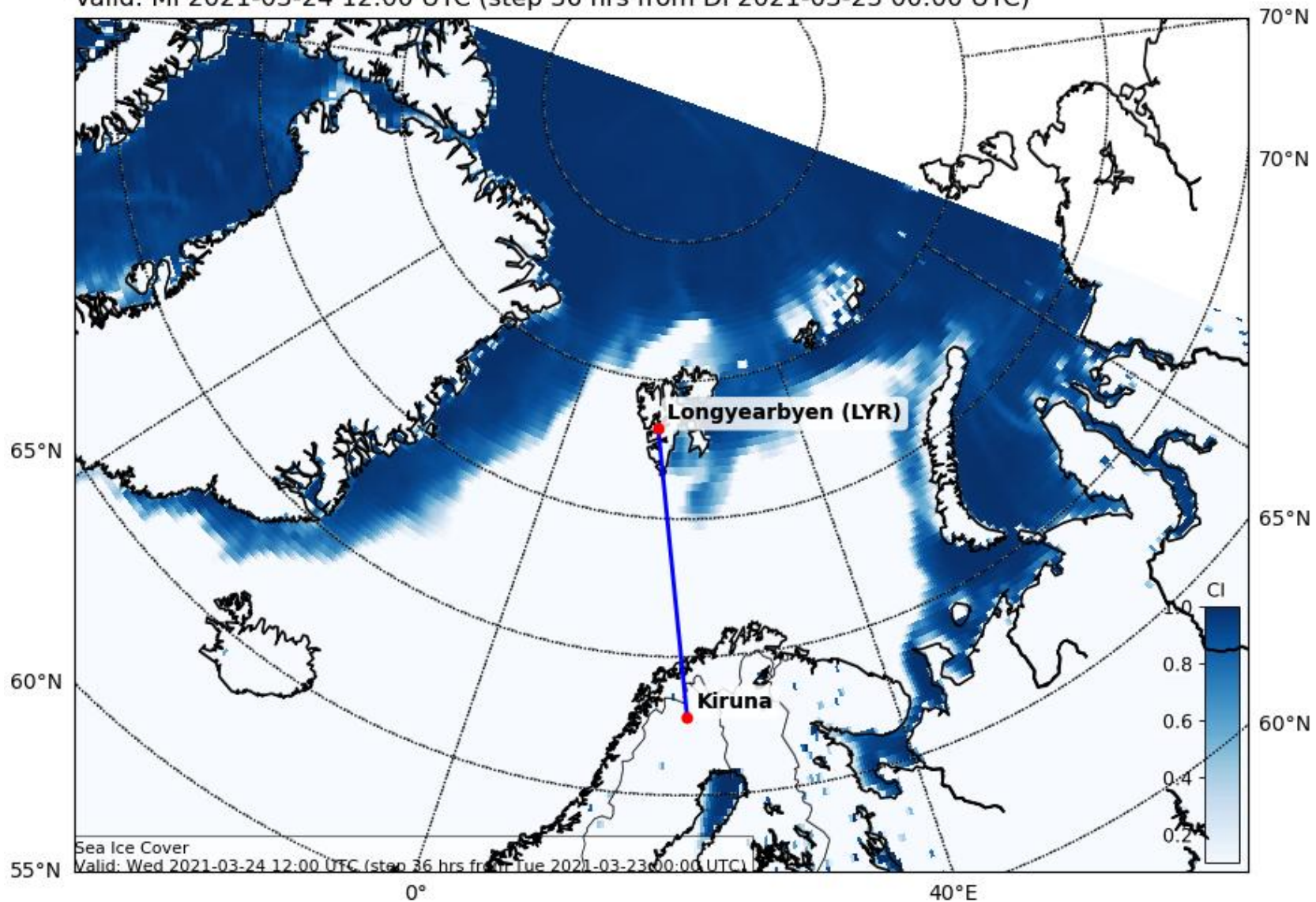
# Weather update HALO-(AC)<sup>3</sup>

24 March 2021

# Sea Ice Concentration (ECMWF): 24/03, 12 UTC

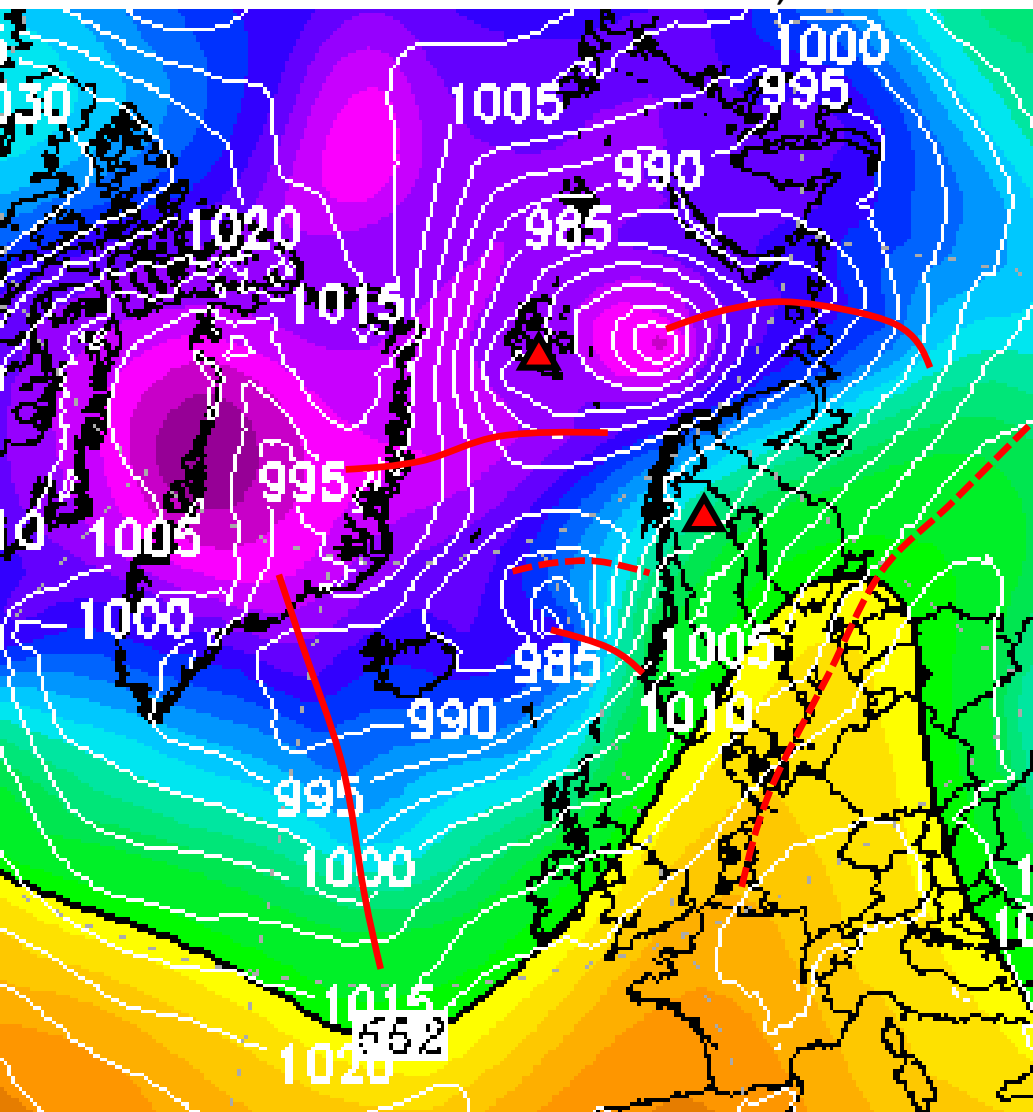
Sea Ice Cover Fraction (0-1) (pseudocolor plot)

Valid: Mi 2021-03-24 12:00 UTC (step 36 hrs from Di 2021-03-23 00:00 UTC)

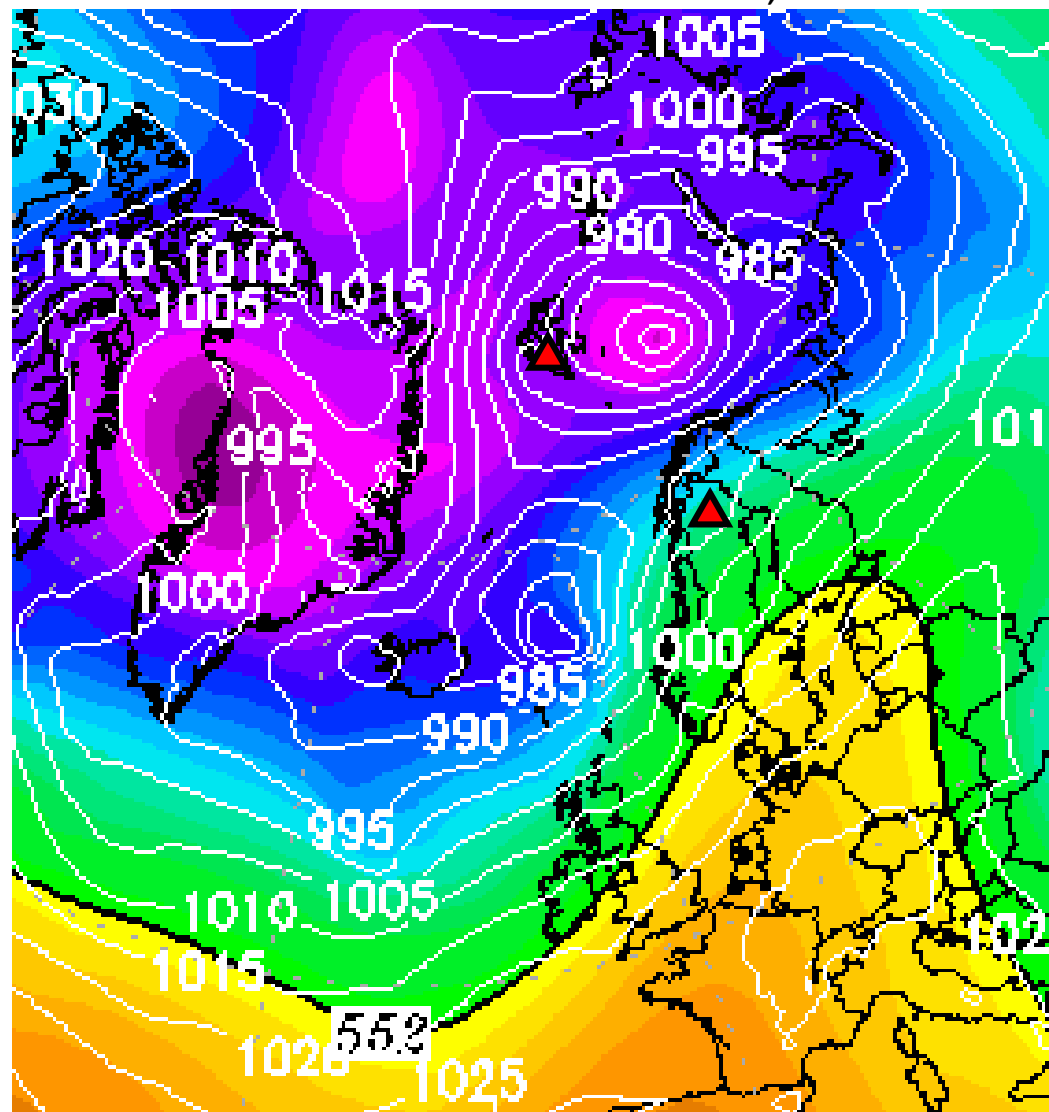


# 500 hPa Geopot. & Sfc. pressure (ECMWF): 24/03, 00 UTC

Forecast based on 2021-03-22, 00Z

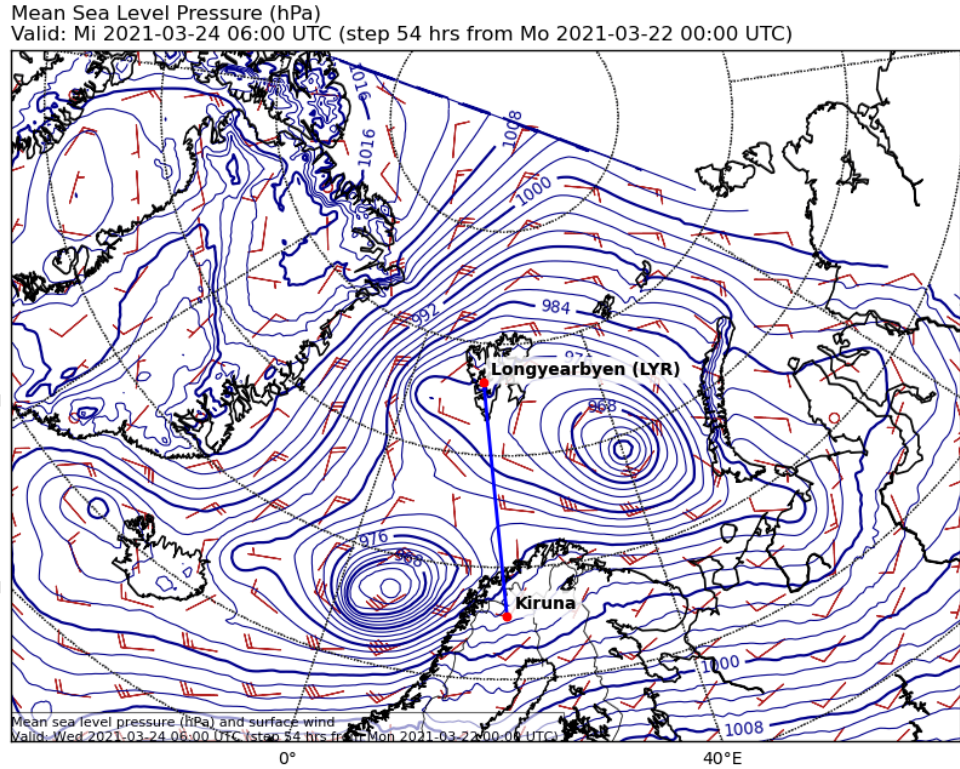


Forecast based on 2021-03-23, 00Z

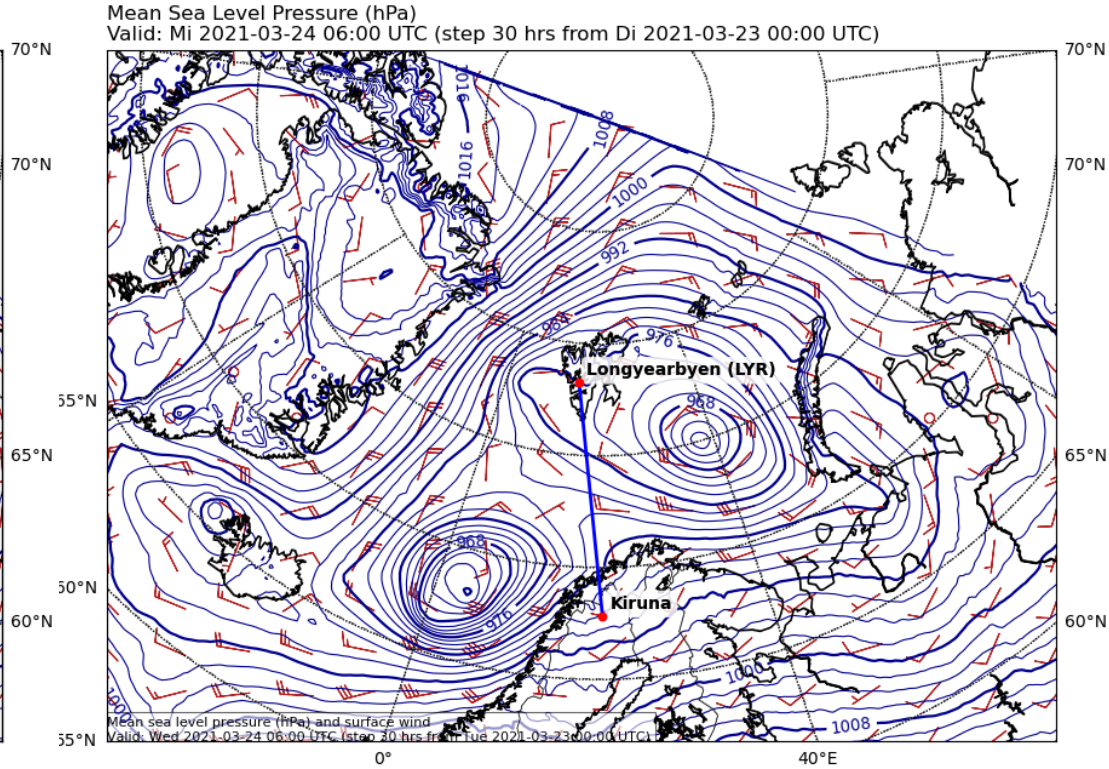


# Surface Winds (EZ): Wed. 24/03, 06 UTC

## Yesterday's forecast



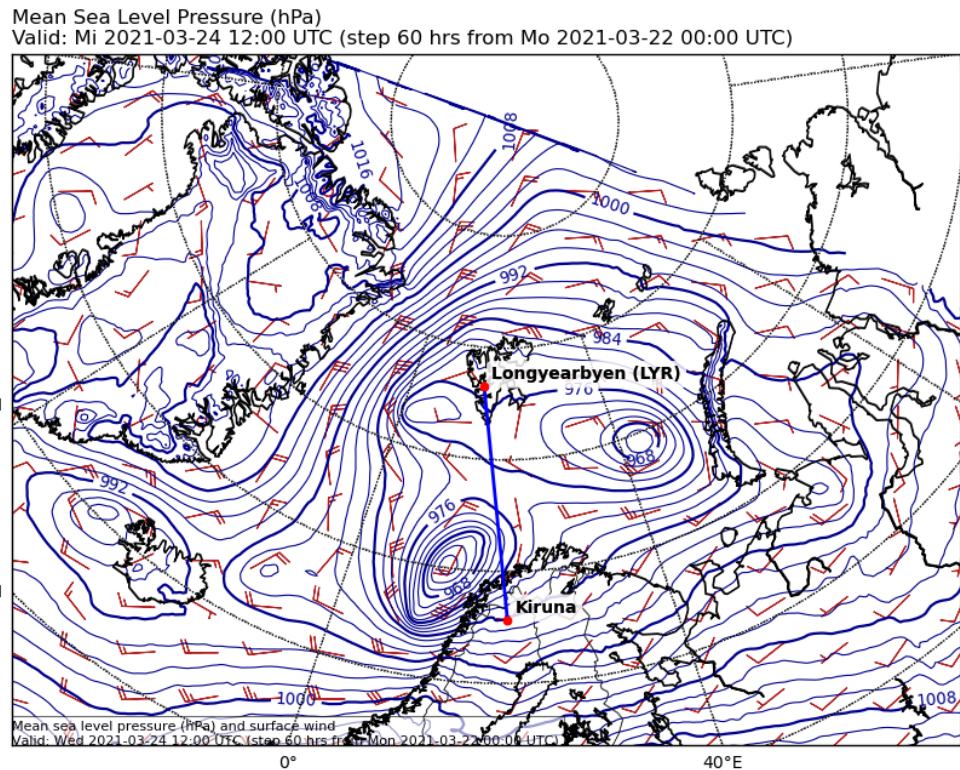
## Today's forecast



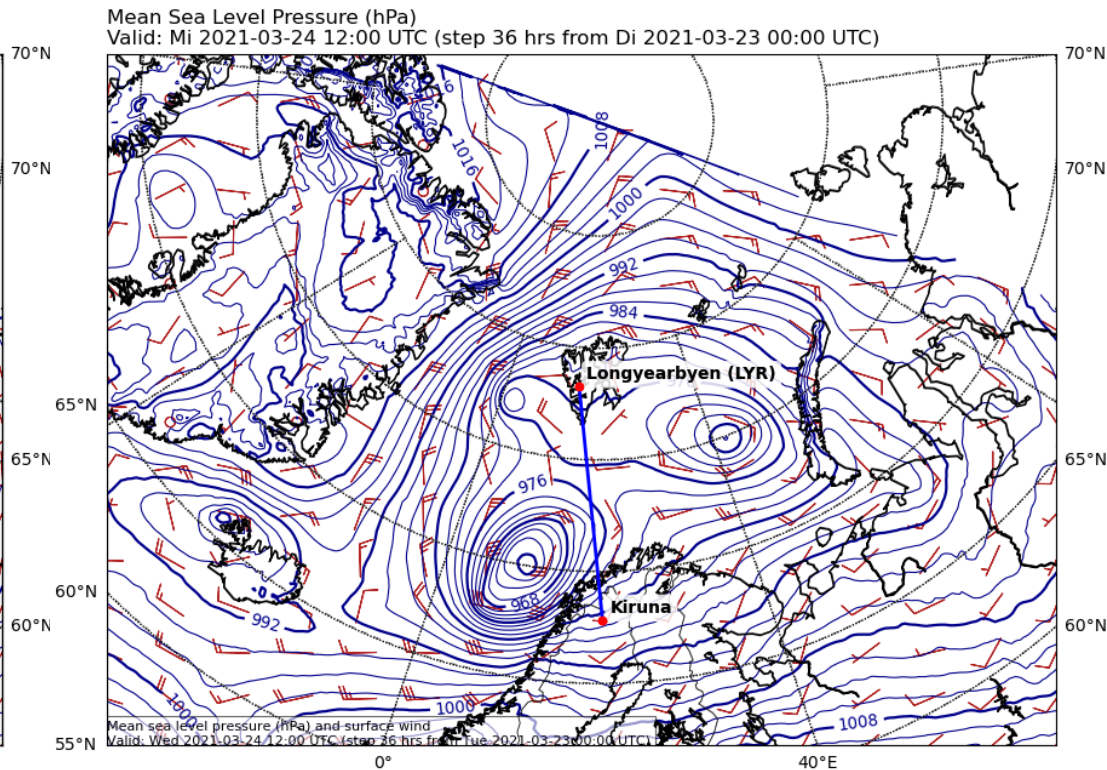
Southern Cyclone slightly more to the west  
Eastern Cyclone core dissolves faster  
Wind field changes a bit around the cyclone centres

# Surface Winds (EZ): Wed. 24/03, 12 UTC

## Yesterday's forecast



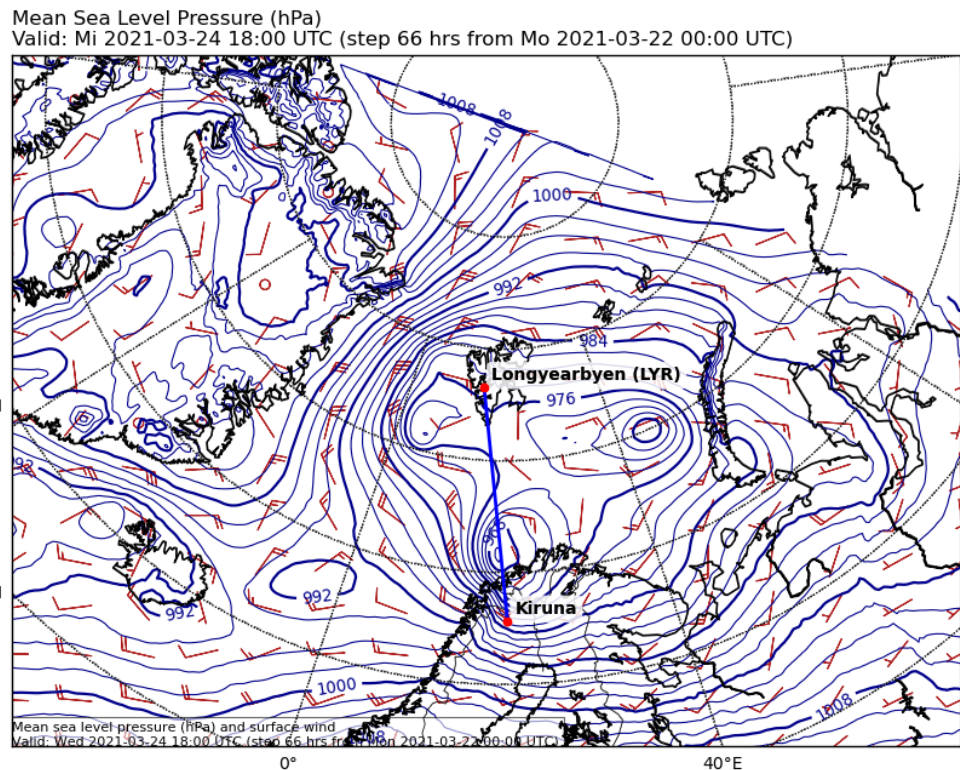
## Today's forecast



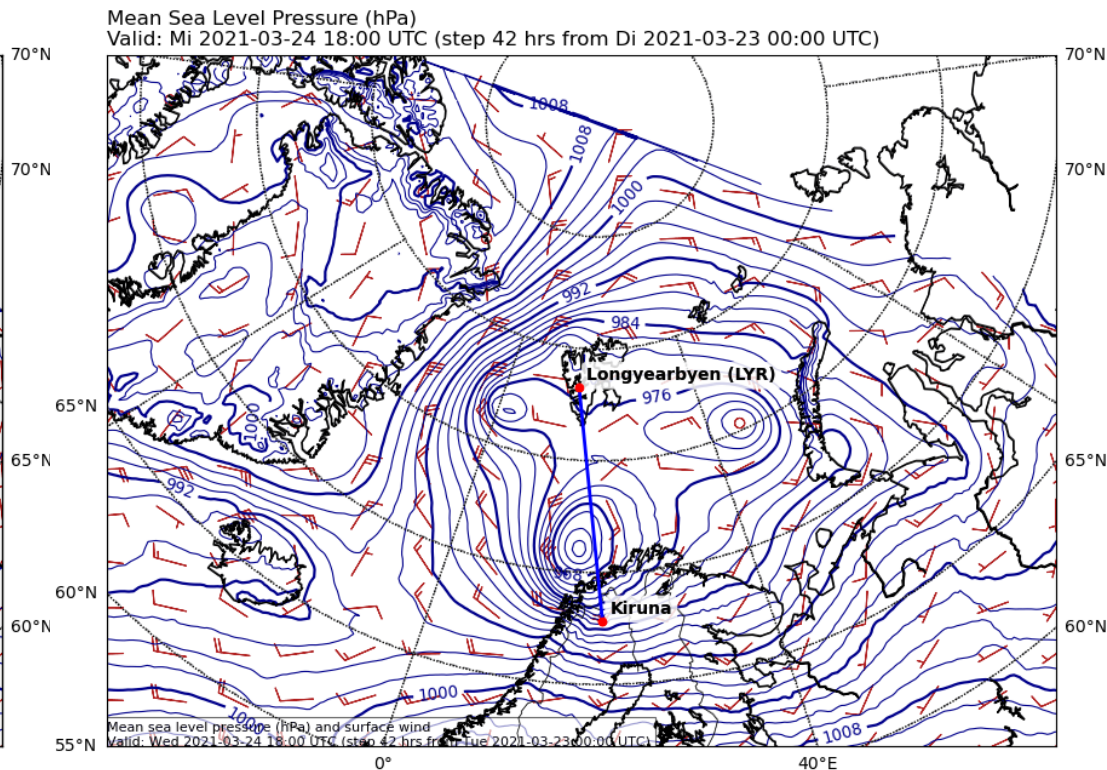
Southern Cyclone: lower core pressure  
Eastern Cyclone core pressure slightly higher  
Wind field changes a bit around the cyclone centres

# Surface Winds (EZ): Wed. 24/03, 18 UTC

## Yesterday's forecast

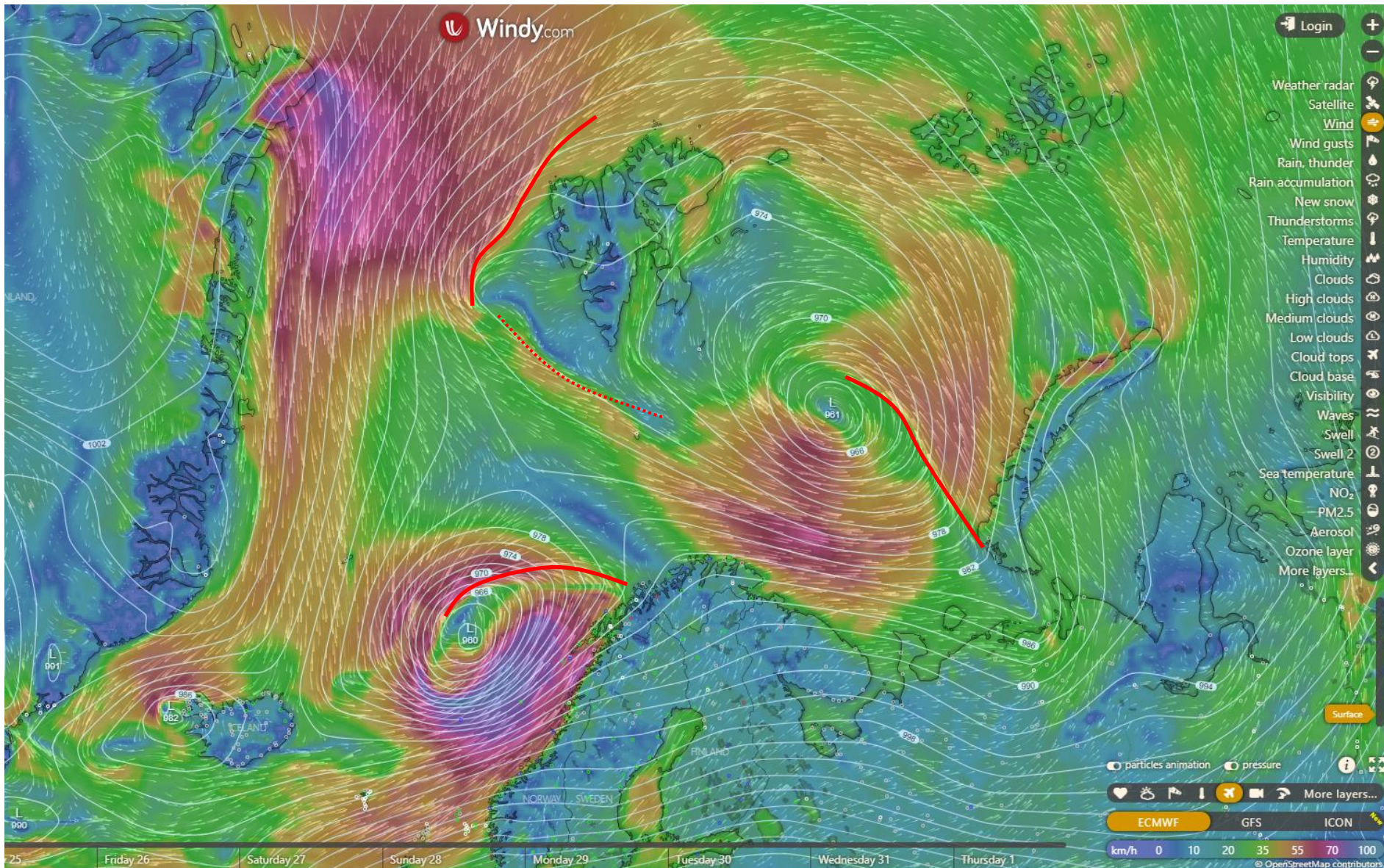


## Today's forecast

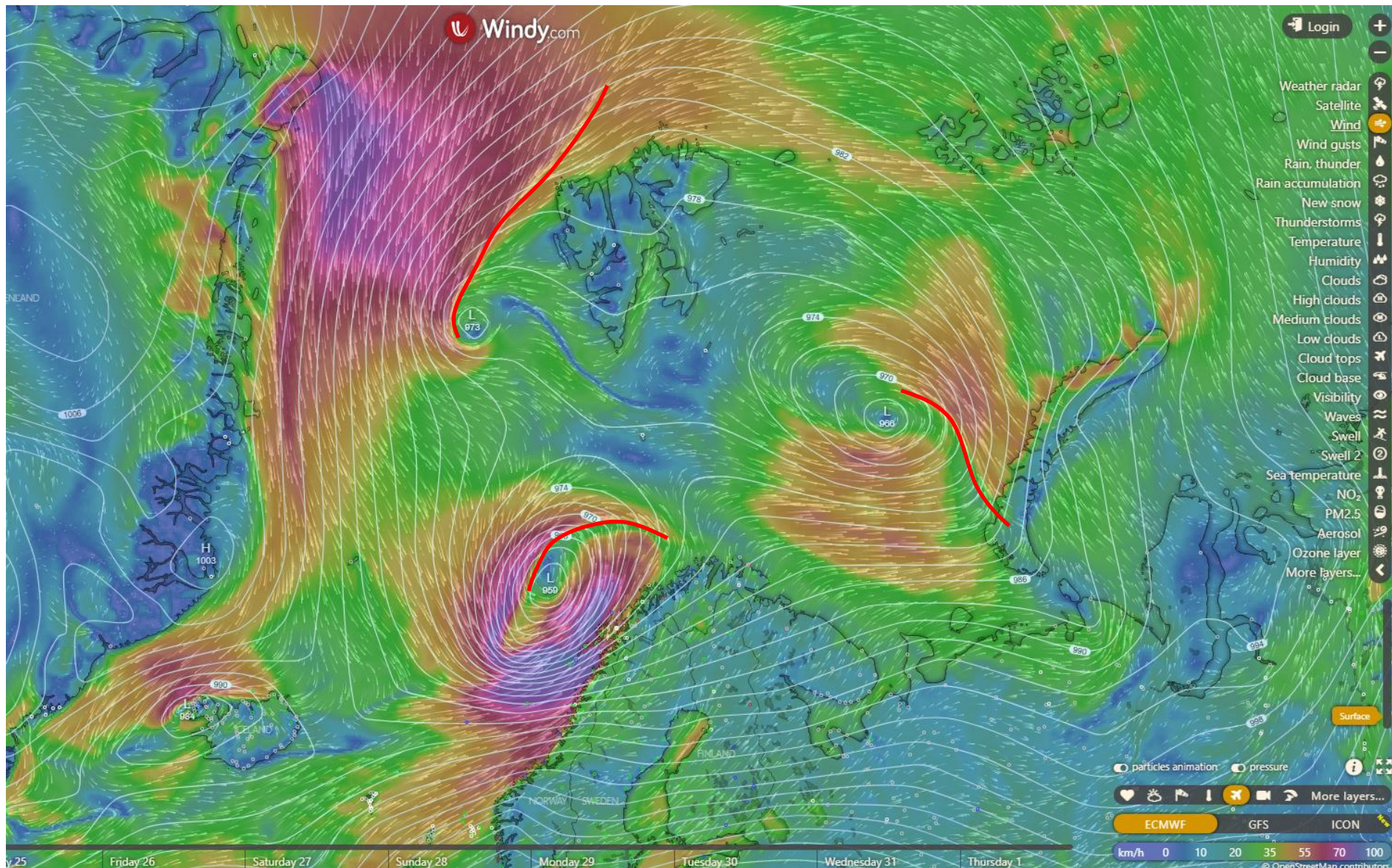


Southern Cyclone **deflected more to the North!**; lower pressure  
Eastern Cyclone: Flow in Fram Strait is a bit more zonal

# Surface Winds (EZ): Wed. 24/03, 06 UTC

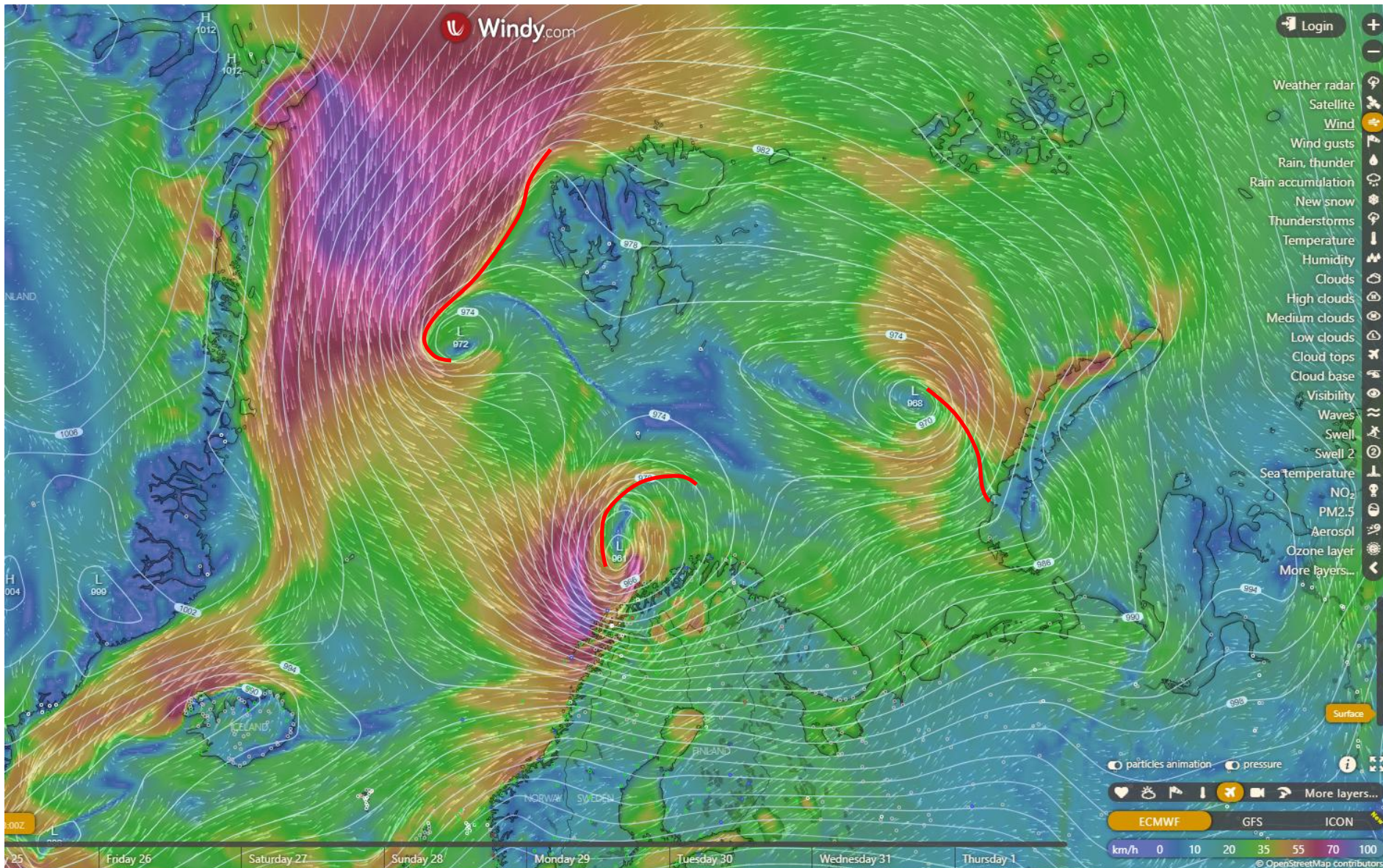


# Surface Winds (EZ): Wed. 24/03, 12 UTC

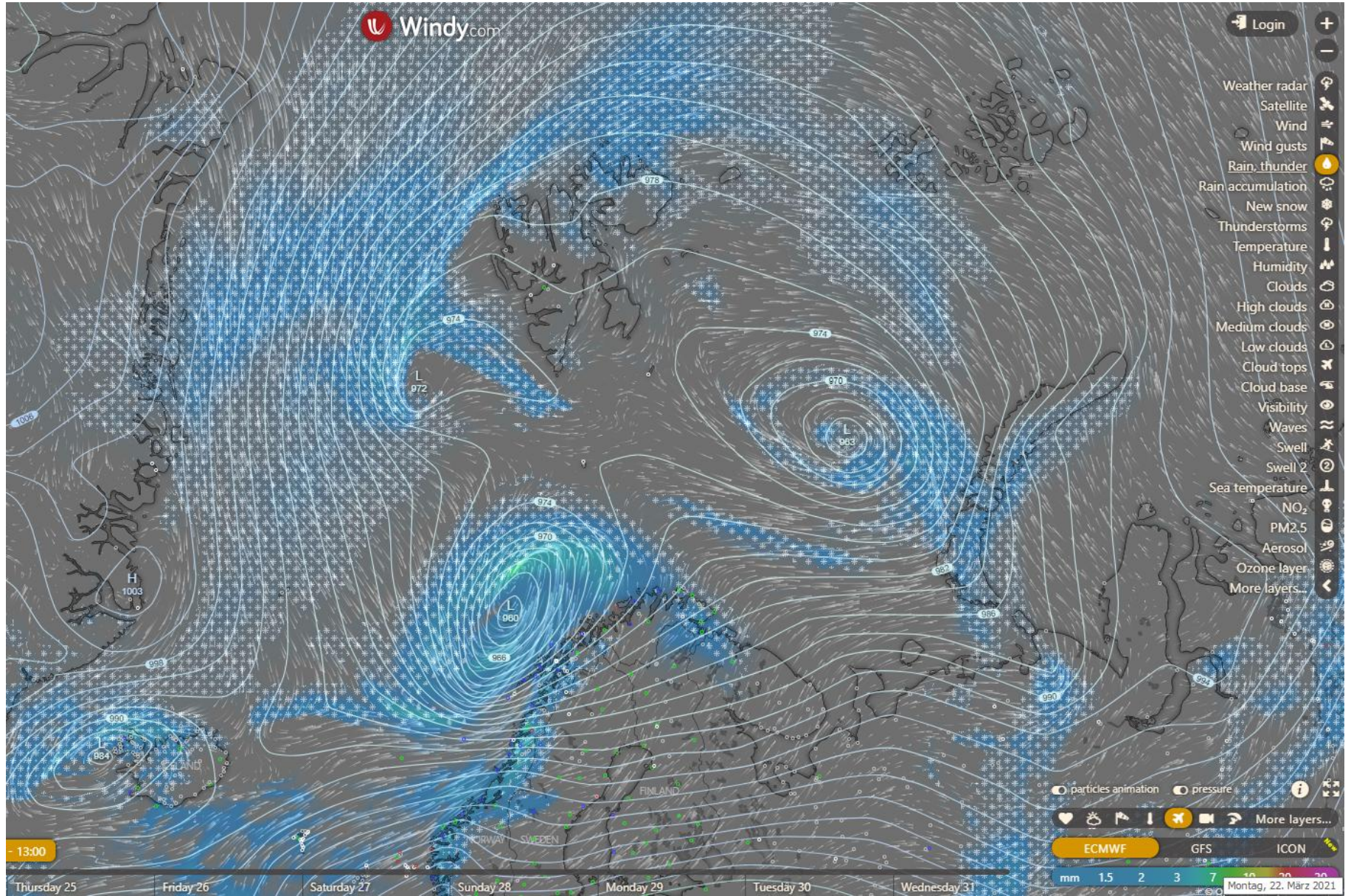




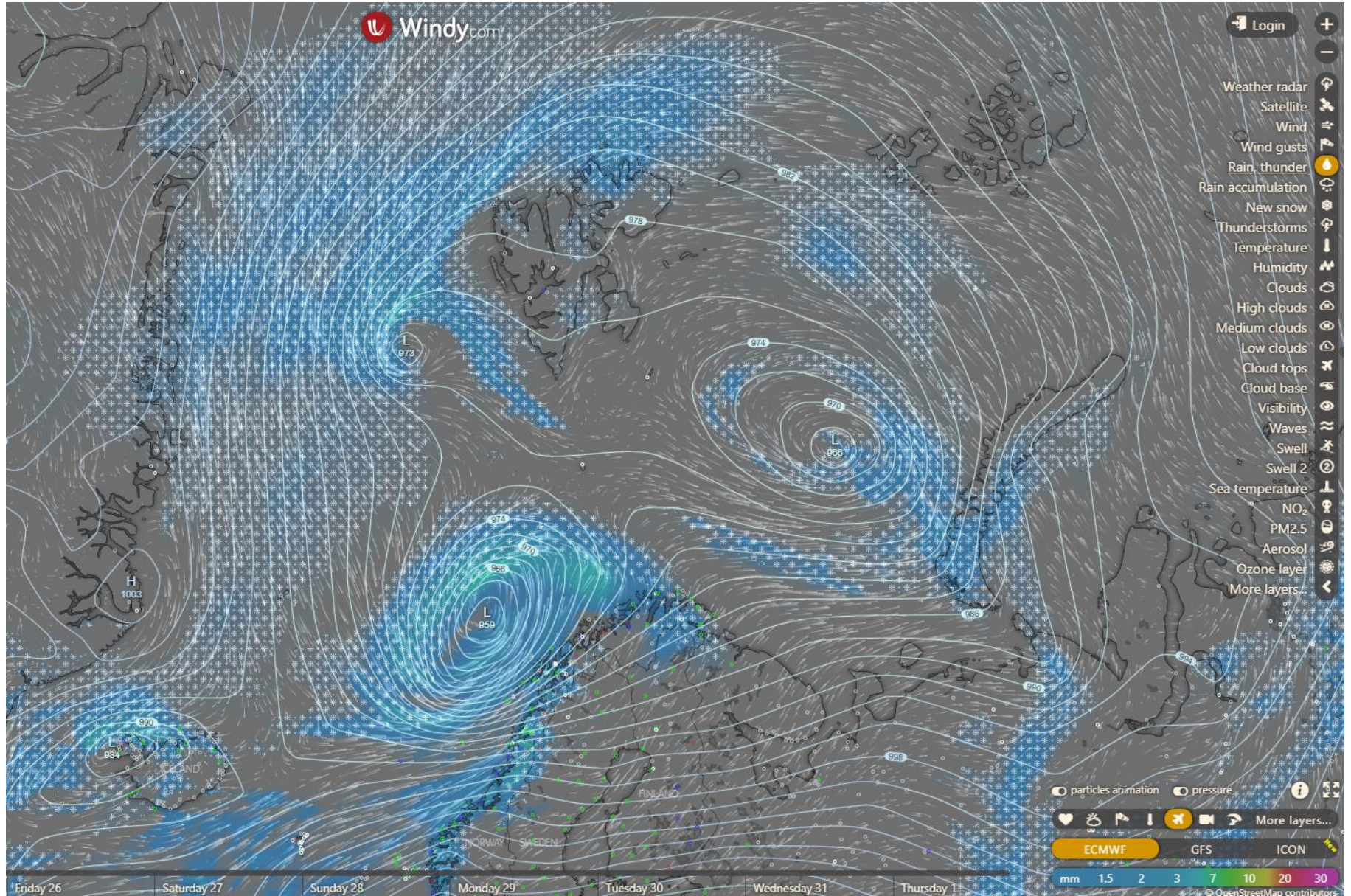
# Surface Winds (EZ): Wed. 24/03, 18 UTC



# Yesterday's Forecast: Precipitation (EZ): Wed. 25/03, 12 UTC



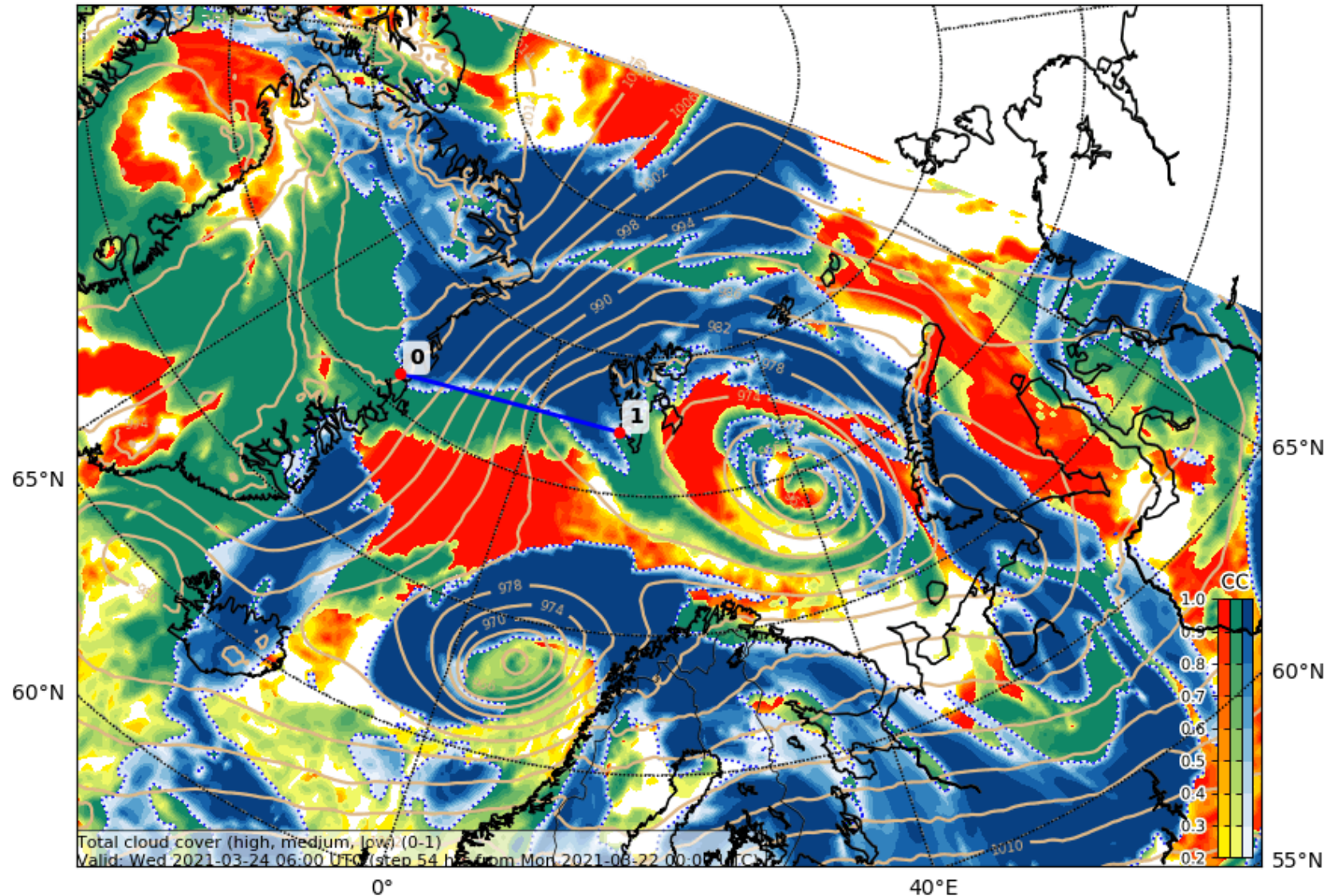
# Today's Forecast: Precipitation (EZ): Wed. 25/03, 12 UTC



# Yesterday's Forecast: Total Cloud cover (EZ): Wed. 25/03, 06 UTC

Cloud Cover (0-1) (Total Cloud Cover)

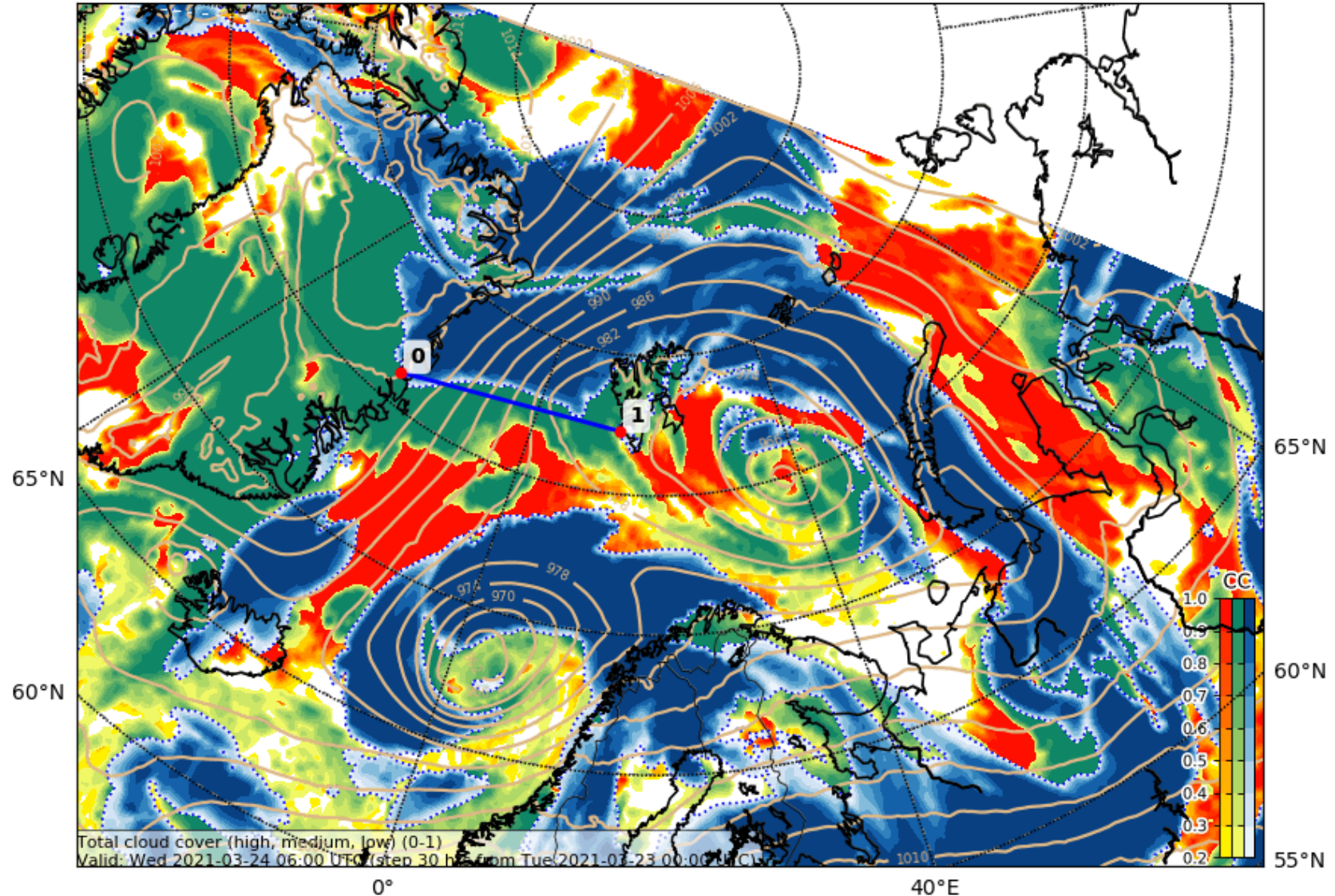
Valid: Mi 2021-03-24 06:00 UTC (step 54 hrs from Mo 2021-03-22 00:00 UTC)



# Today's Forecast: Total Cloud cover (EZ): Wed. 25/03, 06 UTC

Cloud Cover (0-1) (Total Cloud Cover)

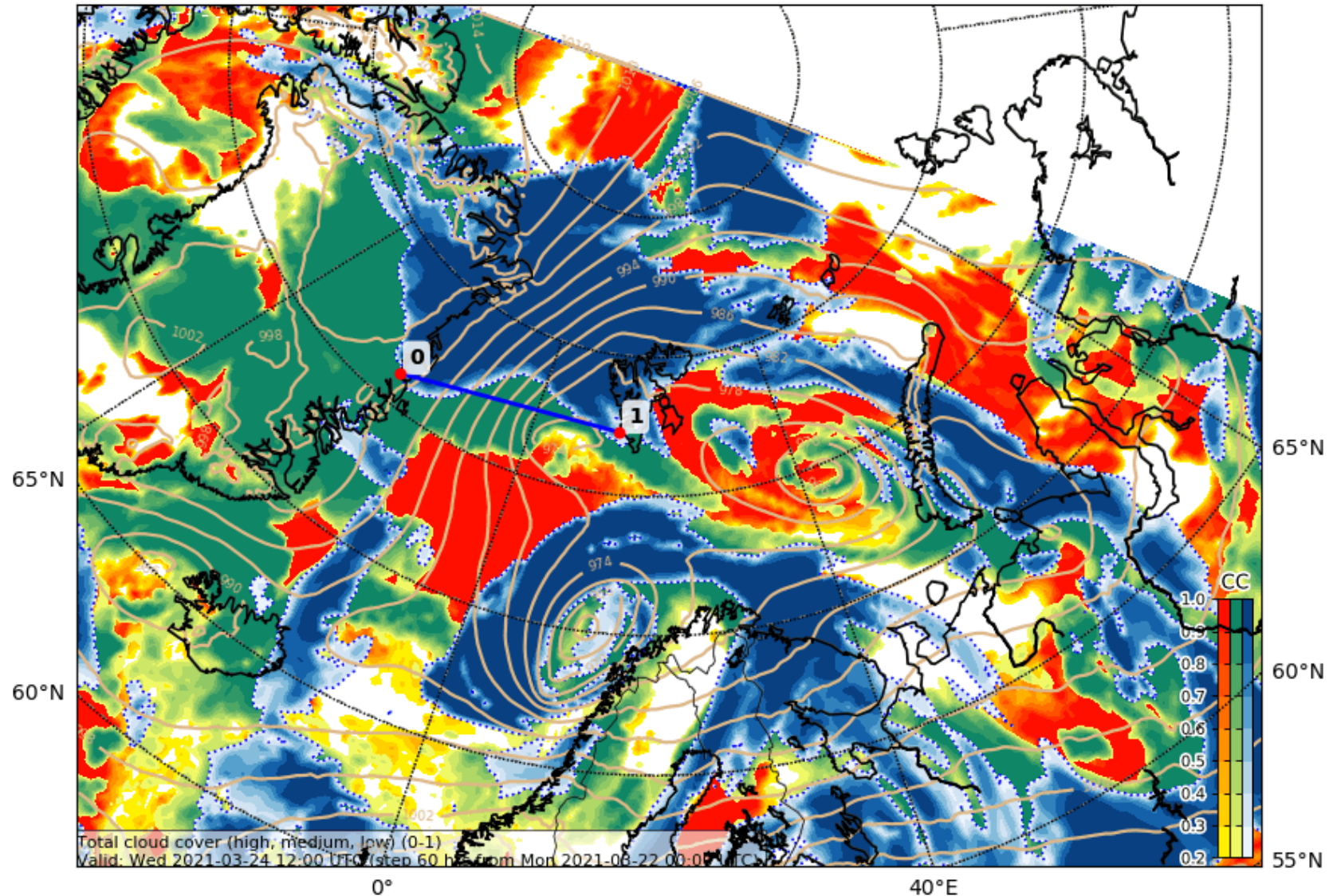
Valid: Mi 2021-03-24 06:00 UTC (step 30 hrs from Di 2021-03-23 00:00 UTC)



# Yesterday's Forecast: Total Cloud cover (EZ): Wed. 25/03, 12 UTC

Cloud Cover (0-1) (Total Cloud Cover)

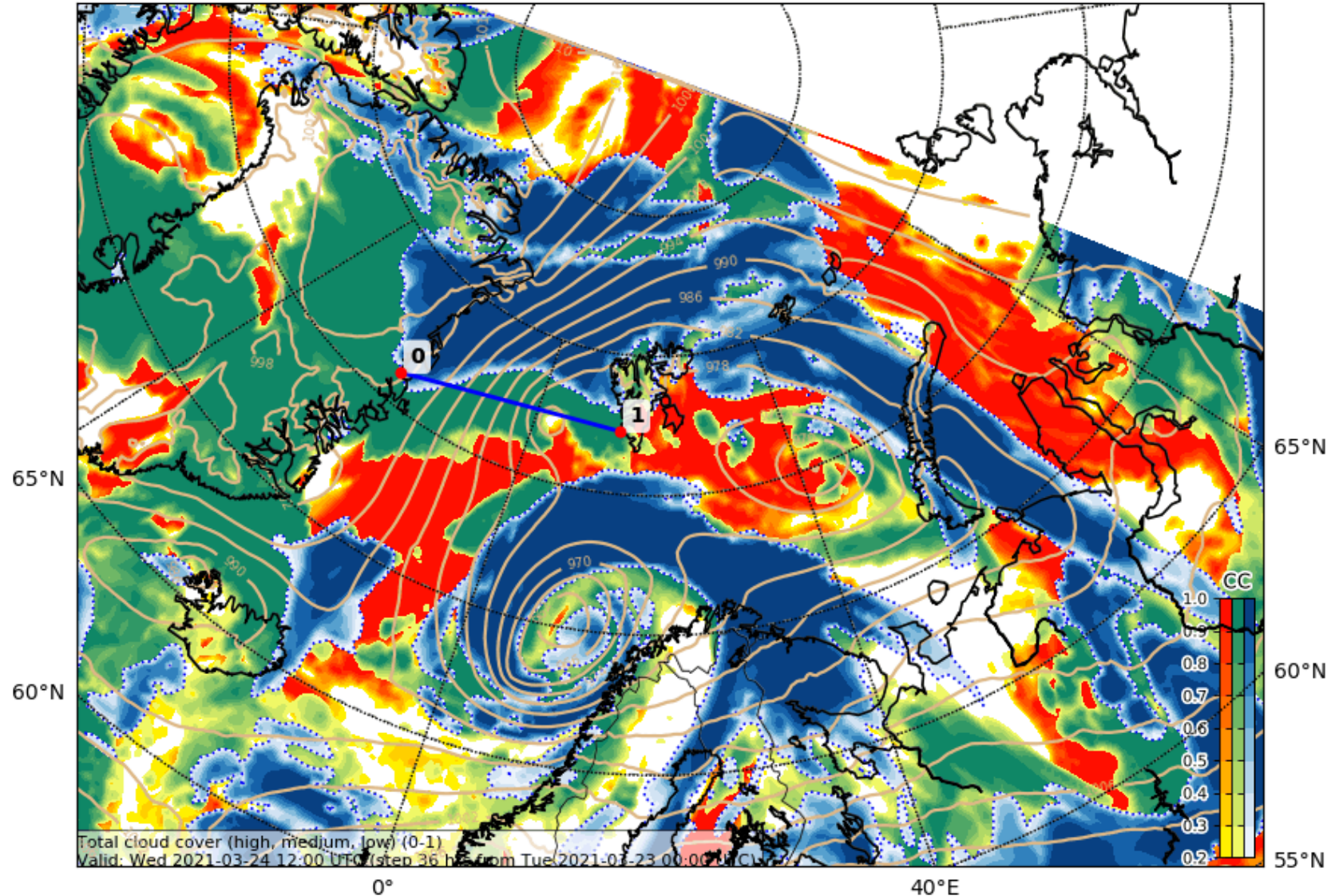
Valid: Mi 2021-03-24 12:00 UTC (step 60 hrs from Mo 2021-03-22 00:00 UTC)



# Today's Forecast: Total Cloud cover (EZ): Wed. 25/03, 12 UTC

Cloud Cover (0-1) (Total Cloud Cover)

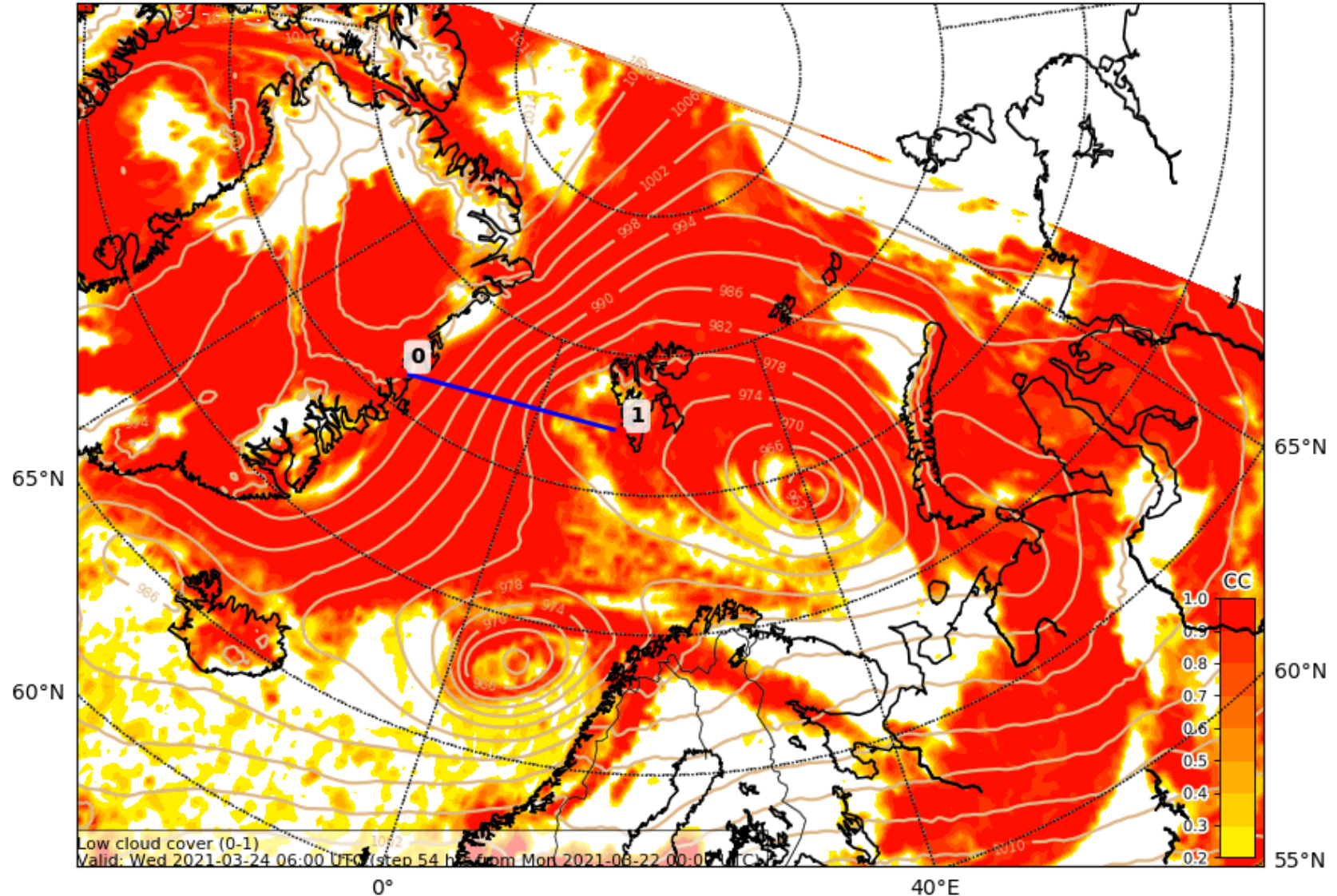
Valid: Mi 2021-03-24 12:00 UTC (step 36 hrs from Di 2021-03-23 00:00 UTC)



# Yesterday's Forecast: Low Cloud cover (EZ): Wed. 25/03, 06 UTC

Cloud Cover (0-1) (Low Cloud Cover)

Valid: Mi 2021-03-24 06:00 UTC (step 54 hrs from Mo 2021-03-22 00:00 UTC)

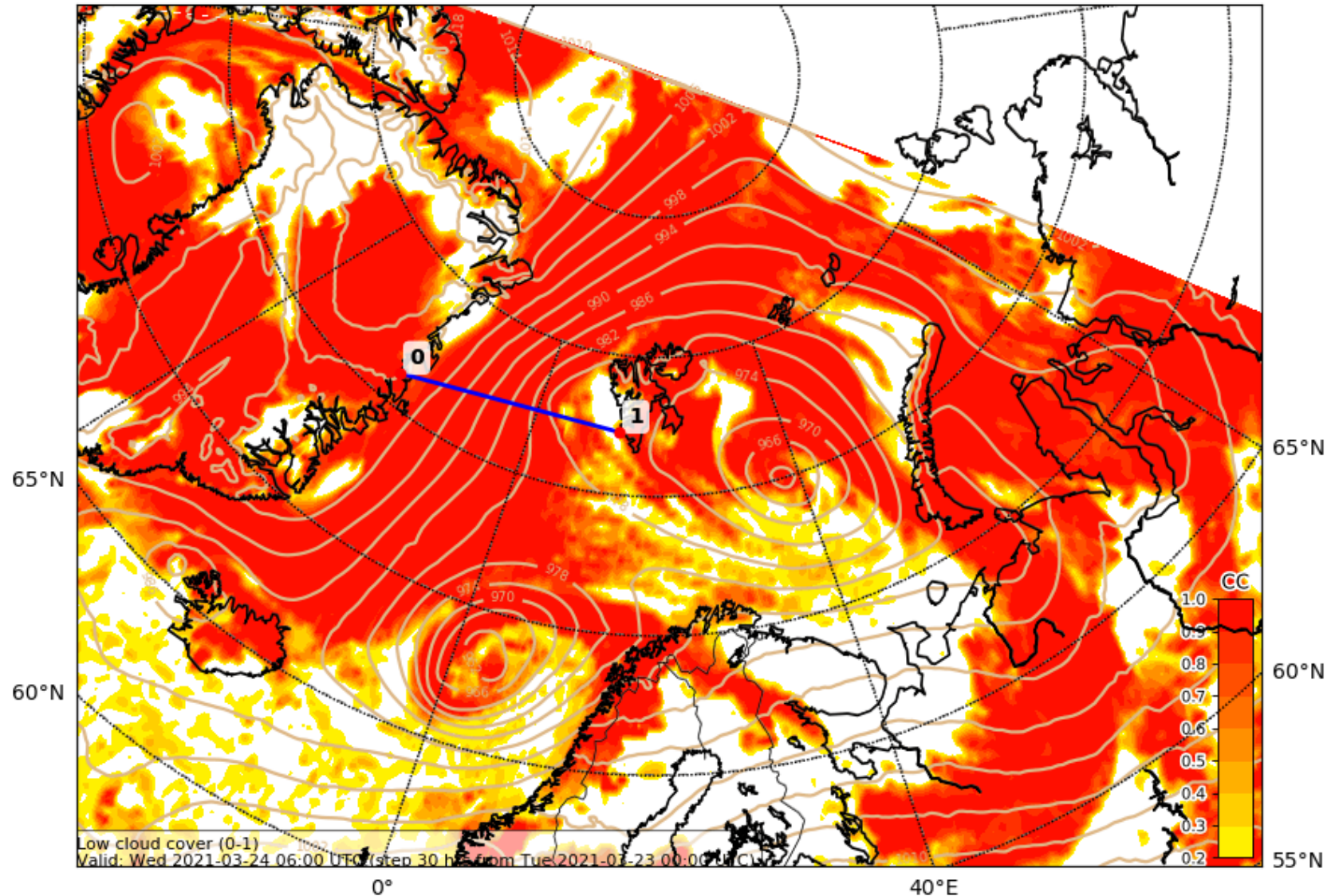




# Today's Forecast: Total Cloud cover (EZ): Wed. 25/03, 06 UTC

Cloud Cover (0-1) (Low Cloud Cover)

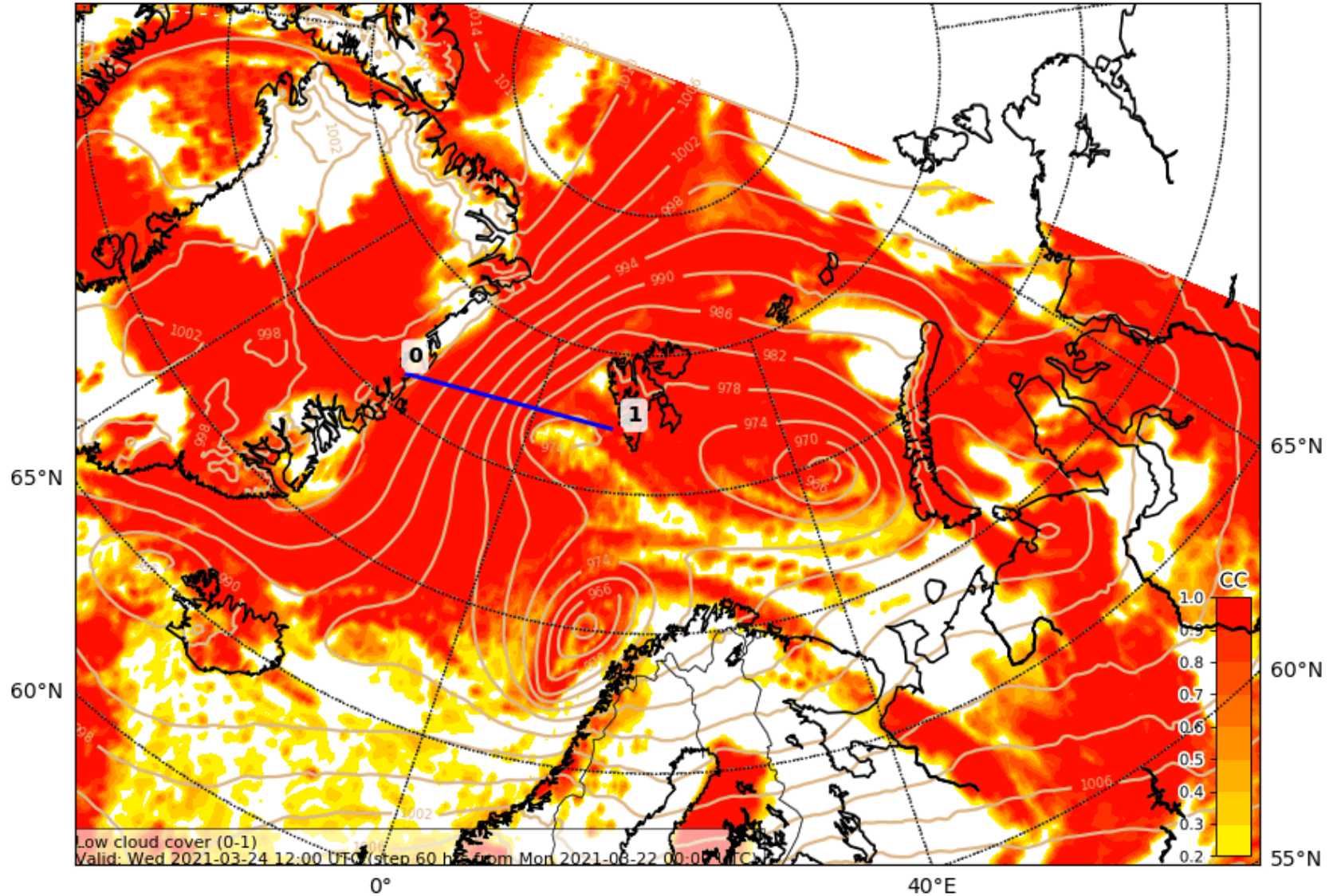
Valid: Mi 2021-03-24 06:00 UTC (step 30 hrs from Di 2021-03-23 00:00 UTC)



# Yesterday's Forecast: Total Cloud cover (EZ): Wed. 25/03, 12 UTC

Cloud Cover (0-1) (Low Cloud Cover)

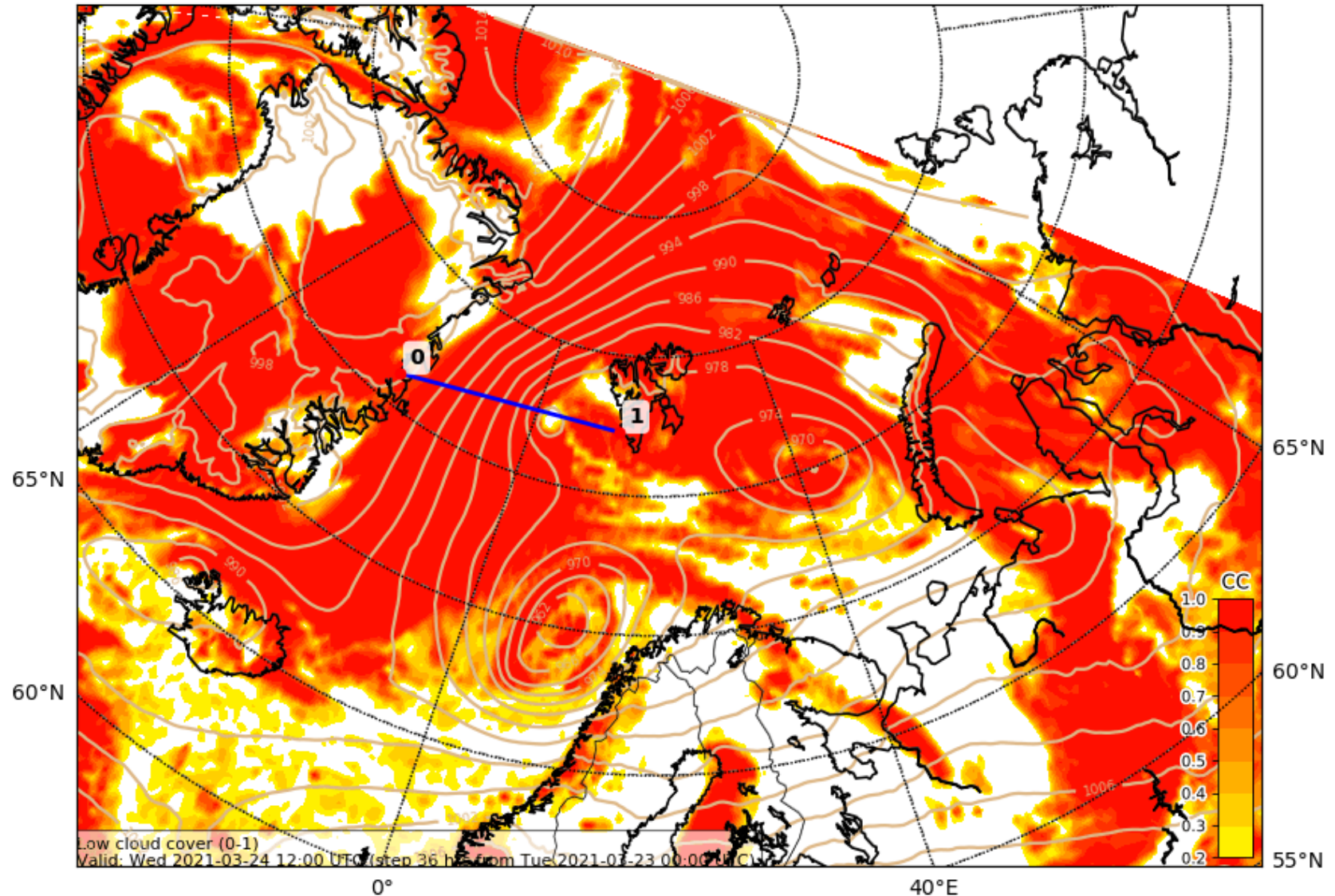
Valid: Mi 2021-03-24 12:00 UTC (step 60 hrs from Mo 2021-03-22 00:00 UTC)

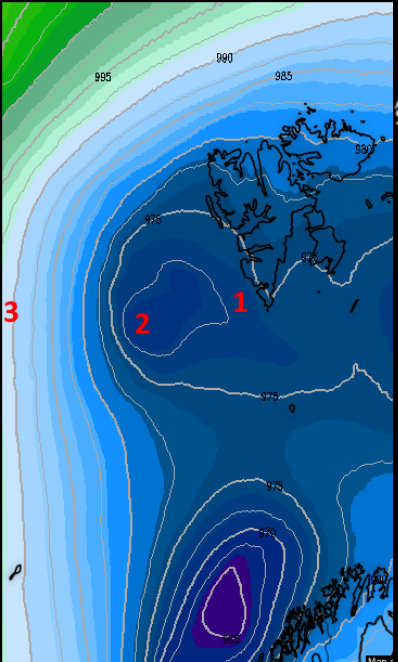


# Today's Forecast: Total Cloud cover (EZ): Wed. 25/03, 12 UTC

Cloud Cover (0-1) (Low Cloud Cover)

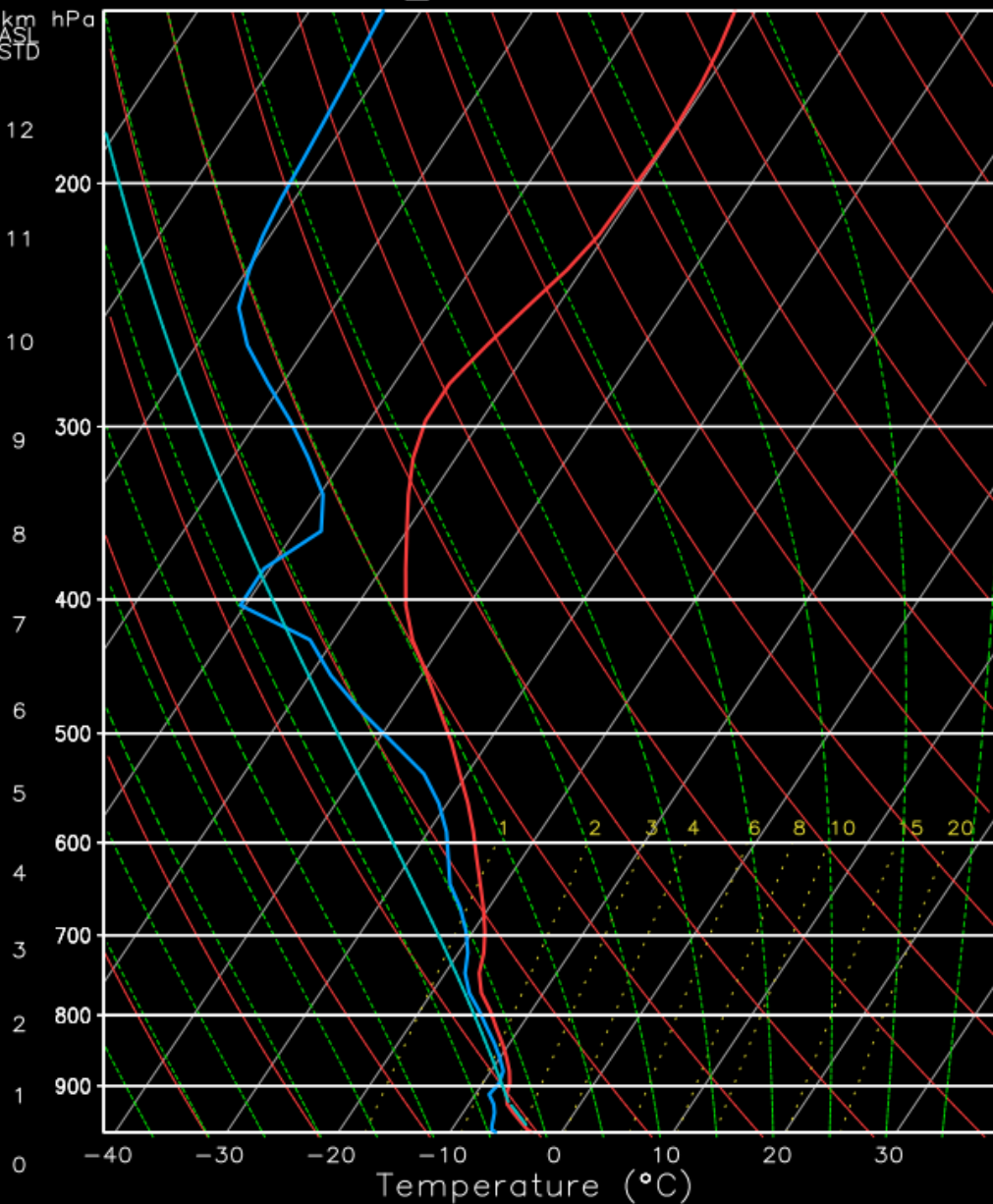
Valid: Mi 2021-03-24 12:00 UTC (step 36 hrs from Di 2021-03-23 00:00 UTC)





**1**

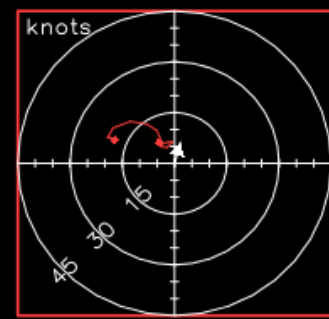
Location: 76.89\_13.41



Mixing Ratio (g/kg)

LCL

Lat: 76.875 Lon: 13.375  
Elevation: -0.0 m



KO	8
VT	24
TT	47
PPW(mm)	6.1

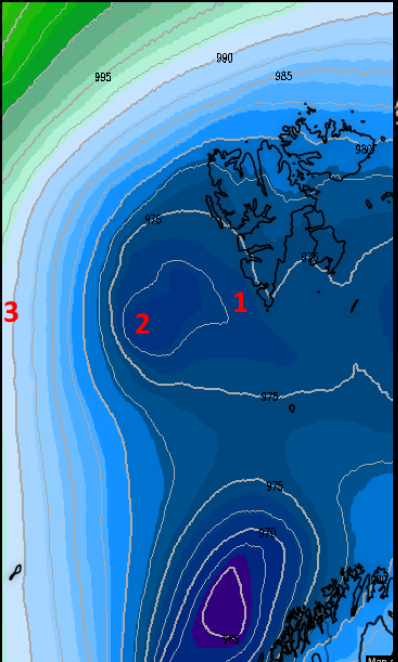
Surface	
Temp(°C)	-2.6
Dewp(°C)	-5.9
$\theta_e$ (K)	279
LI	11
CAPE(J/kg)	0
CIN(J/kg)	0

Most Unstable	
Press(mb)	721
$\theta_e$ (K)	283
LI	7
CAPE(J/kg)	0
CIN(J/kg)	0

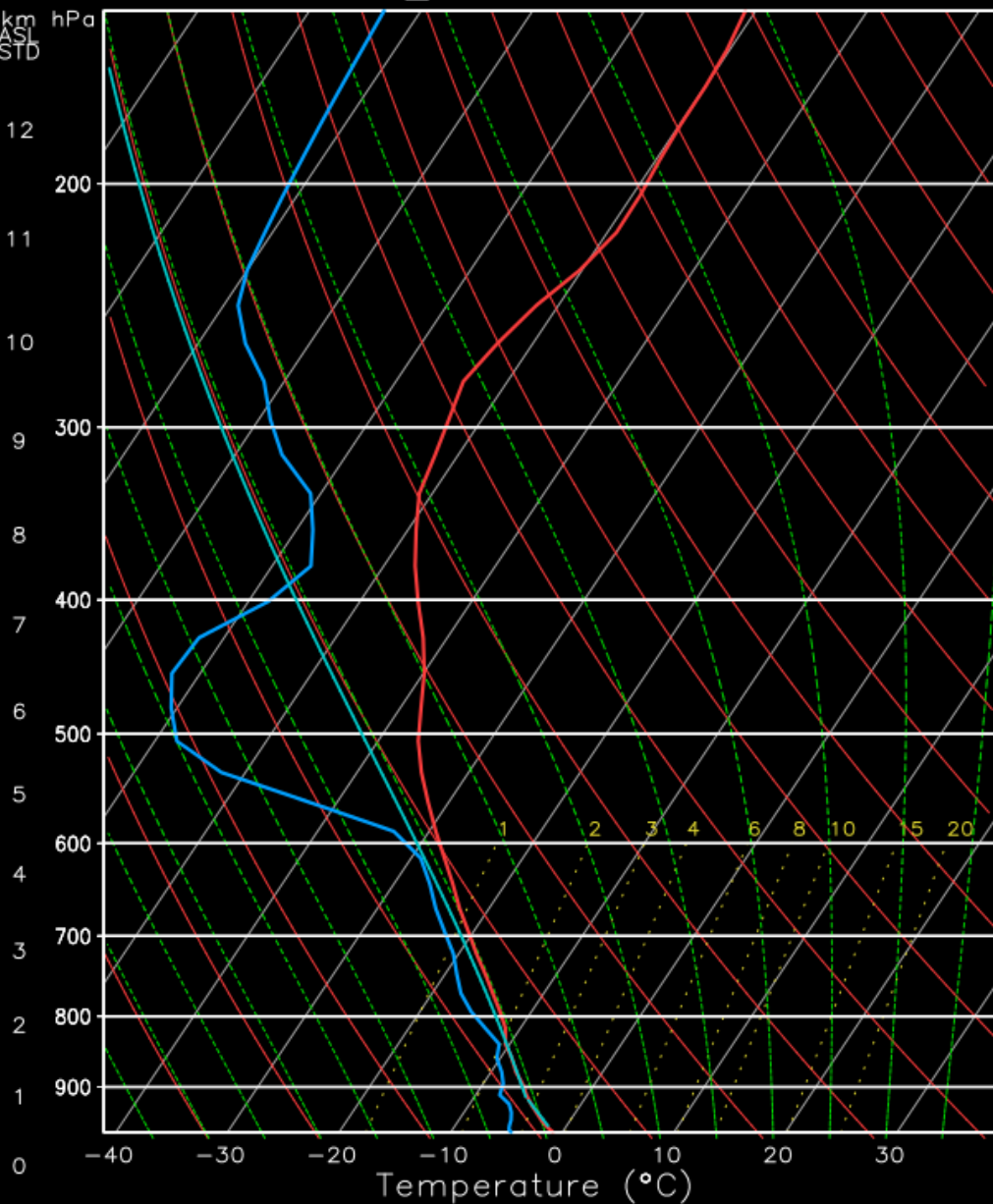
Hodograph	
EH	55
SREH	31
StmDir	195°
StmSpd(kt)	6

ICON12x12  
run: 20210323\_06Z +030h

valid:  
12Z 24MAR2021



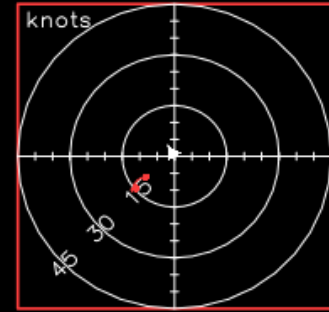
**2** Location: 76.45\_3.92



Mixing Ratio (g/kg)

LCL

Lat: 76.500 Lon: 3.875  
Elevation: -0.0 m



KO	3
VT	27
TT	53
PPW(mm)	5.6

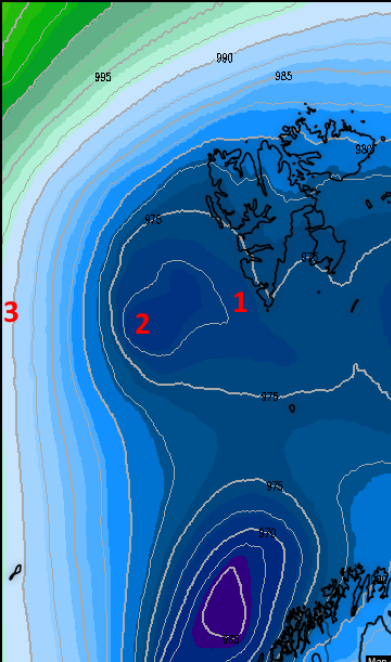
Surface	
Temp(°C)	-0.8
Dewp(°C)	-4.6
$\theta_e$ (K)	282
LI	6
CAPE(J/kg)	1
CIN(J/kg)	0

Most Unstable	
Press(mb)	695
$\theta_e$ (K)	282
LI	6
CAPE(J/kg)	0
CIN(J/kg)	0

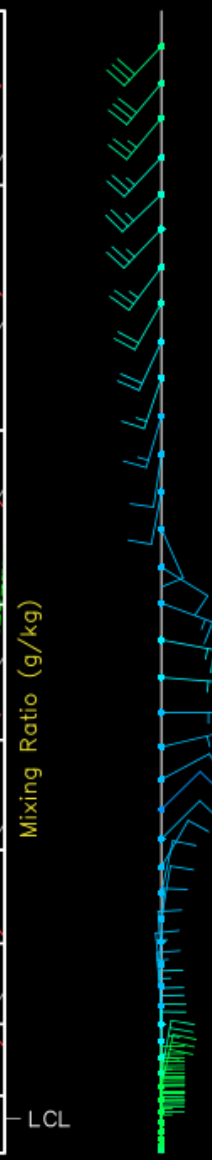
Hodograph	
EH	4
SREH	-0
StmDir	148°
StmSpd(kt)	3

ICON12x12  
run: 20210323\_06Z +030h

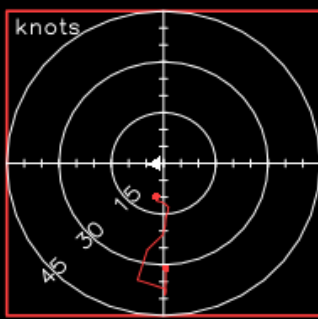
valid:  
12Z 24MAR2021



**3** Location: 76.73\_ -9.14

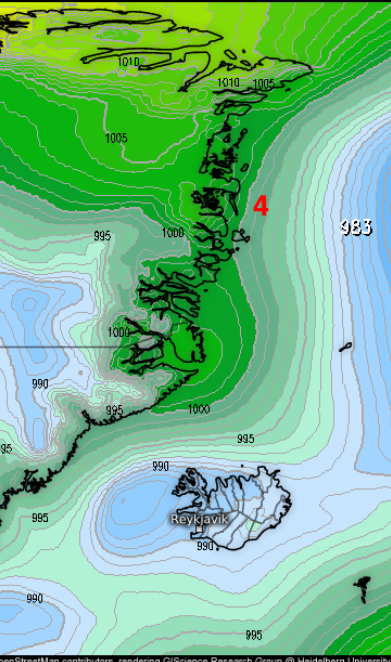


Lat: 76.750 Lon: -9.125  
Elevation: -0.0 m



KO	20
VT	22
TT	42
PPW(mm)	2.6
Surface	
Temp(°C)	-23.7
Dewp(°C)	-27.1
$\theta_e$ (K)	251
LI	27
CAPE(J/kg)	0
CIN(J/kg)	0
Most Unstable	
Press(mb)	725
$\theta_e$ (K)	275
LI	7
CAPE(J/kg)	0
CIN(J/kg)	0
Hodograph	
EH	45
SREH	13
StmDir	86°
StmSpd(kt)	4

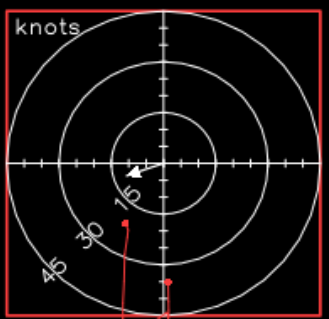
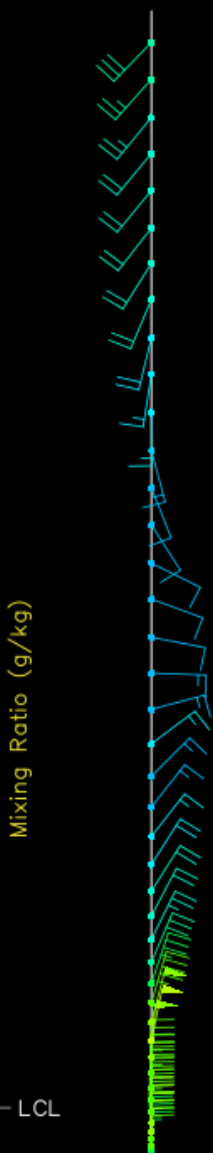
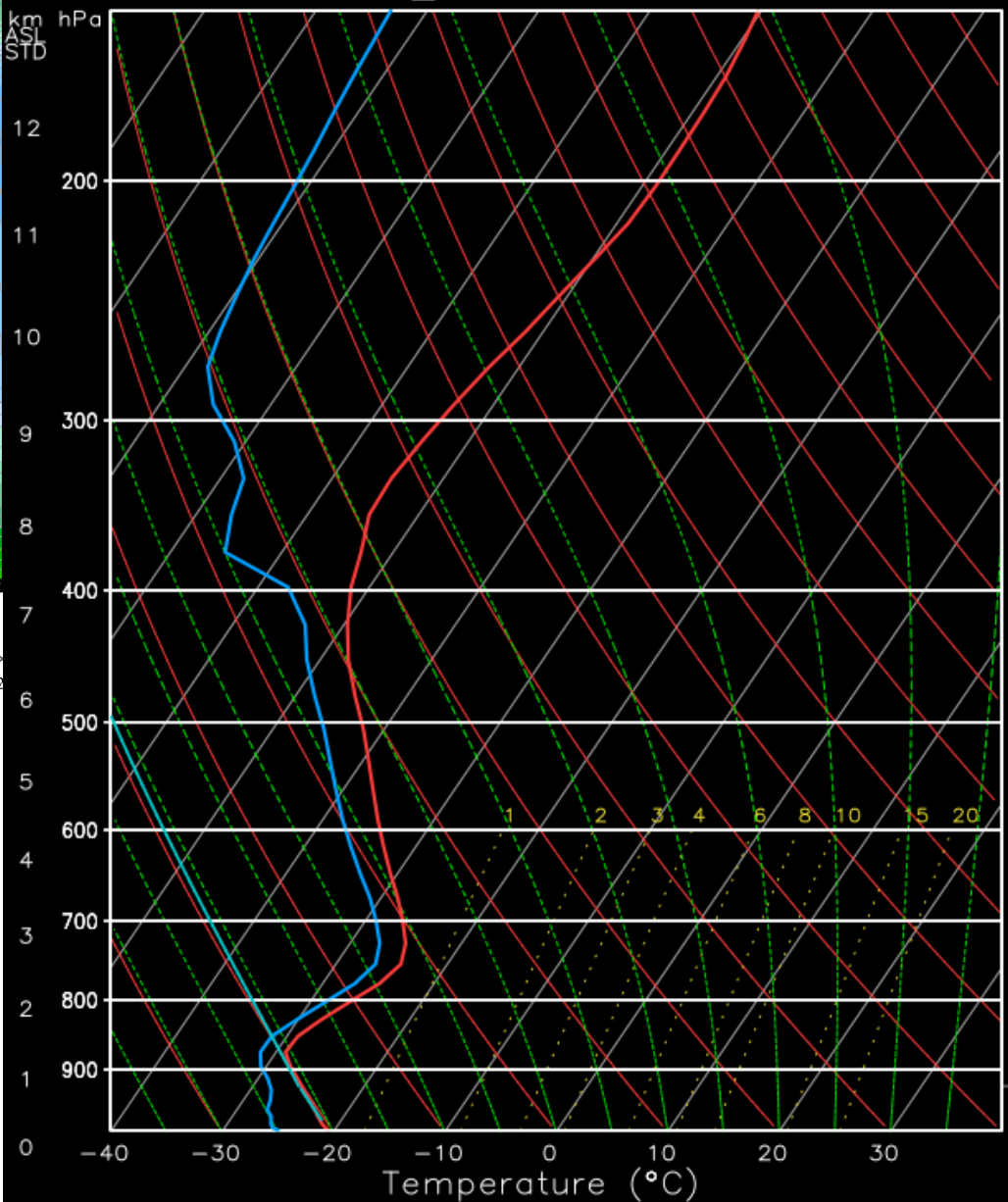
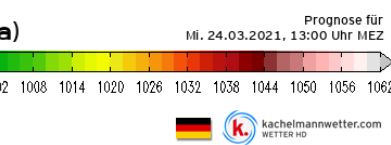
ICON12x12  
run: 20210323\_06Z +030h  
valid:  
12Z 24MAR2021



4

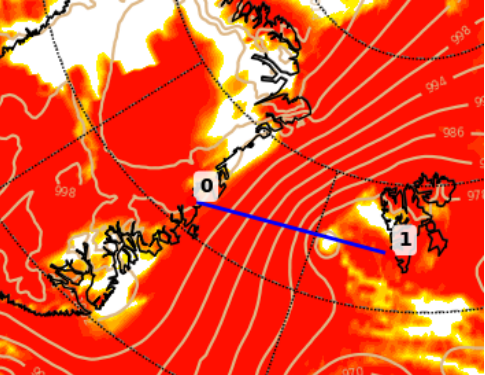
Location: 76.45\_ -16.2

Lat: 76.500 Lon: -16.250  
Elevation: -0.0 m



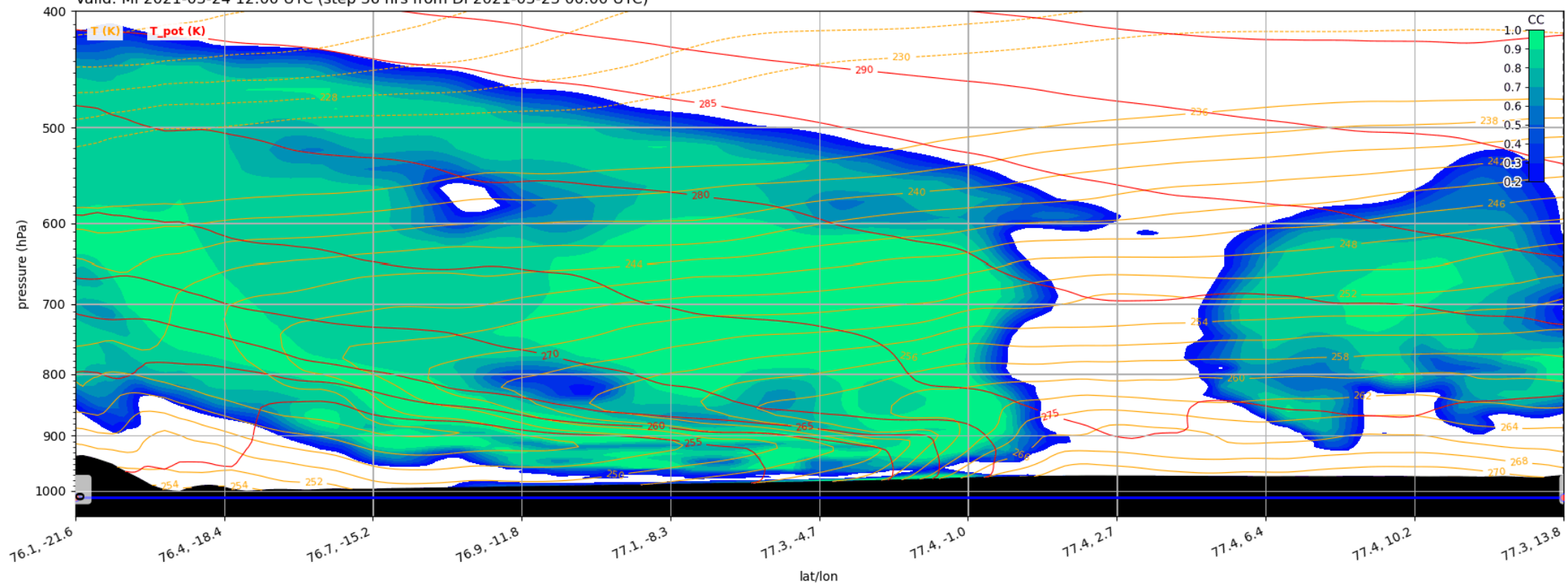
KO	22
VT	13
TT	24
PPW(mm)	1.9
Surface	
Temp(°C)	-20.5
Dewp(°C)	-25
$\theta_e$ (K)	253
LI	23
CAPE(J/kg)	0
CIN(J/kg)	0
Most Unstable	
Press(mb)	727
$\theta_e$ (K)	273
LI	8
CAPE(J/kg)	0
CIN(J/kg)	0
Hodograph	
EH	238
SREH	160
StmDir	70°
StmSpd(kt)	11

ICON12x12  
run: 20210323\_06Z +030h  
valid:  
12Z 24MAR2021

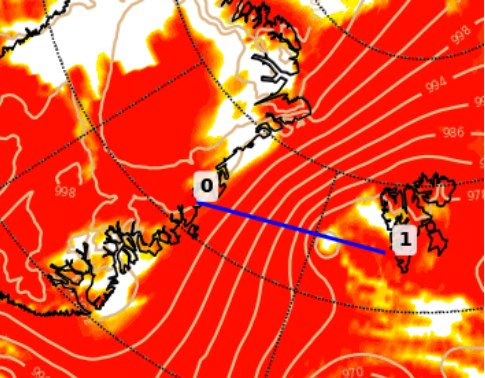


## Cloud cover

Cloud Cover (0-1) Vertical Section  
Valid: Mi 2021-03-24 12:00 UTC (step 36 hrs from Di 2021-03-23 00:00 UTC)

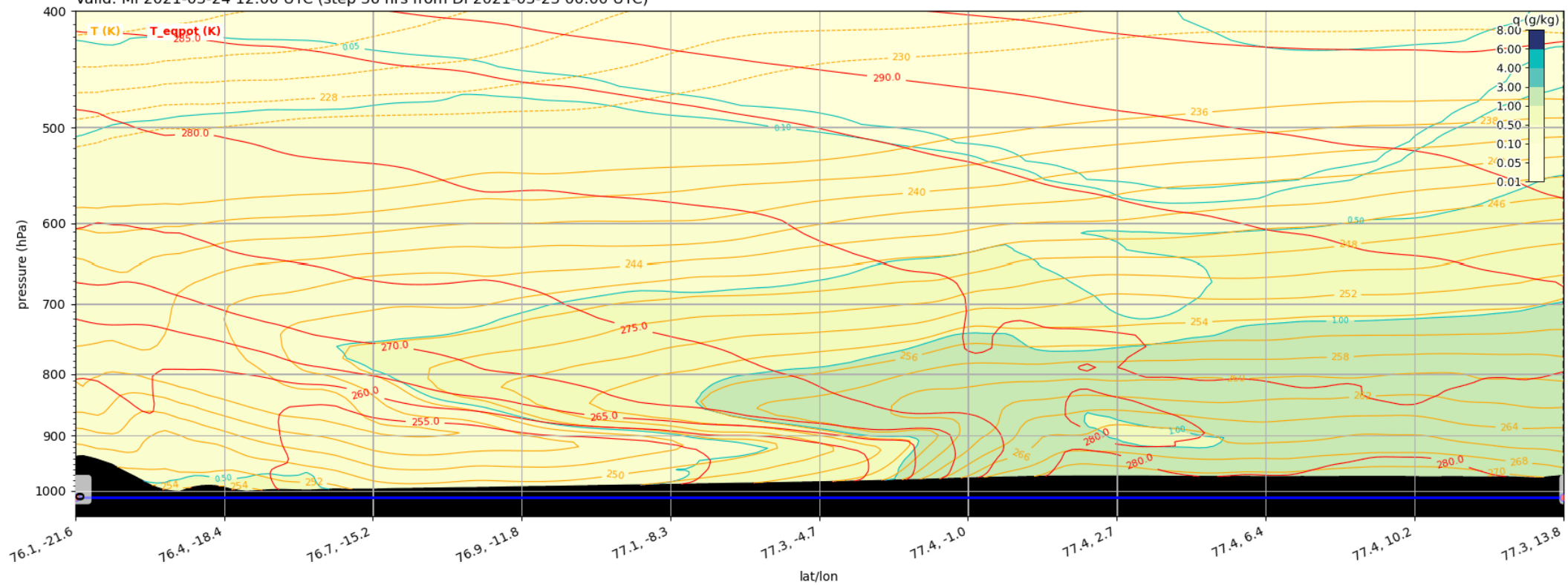


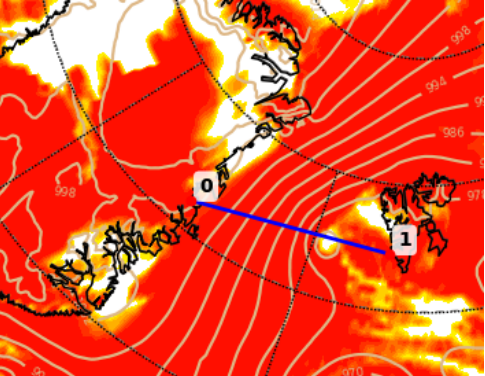




# Spec. hum.

Specific Humidity (g/kg) Vertical Section  
Valid: Mi 2021-03-24 12:00 UTC (step 36 hrs from Di 2021-03-23 00:00 UTC)





# Temperature

Temperature (K) Vertical Section  
Valid: Mi 2021-03-24 12:00 UTC (step 36 hrs from Di 2021-03-23 00:00 UTC)

