

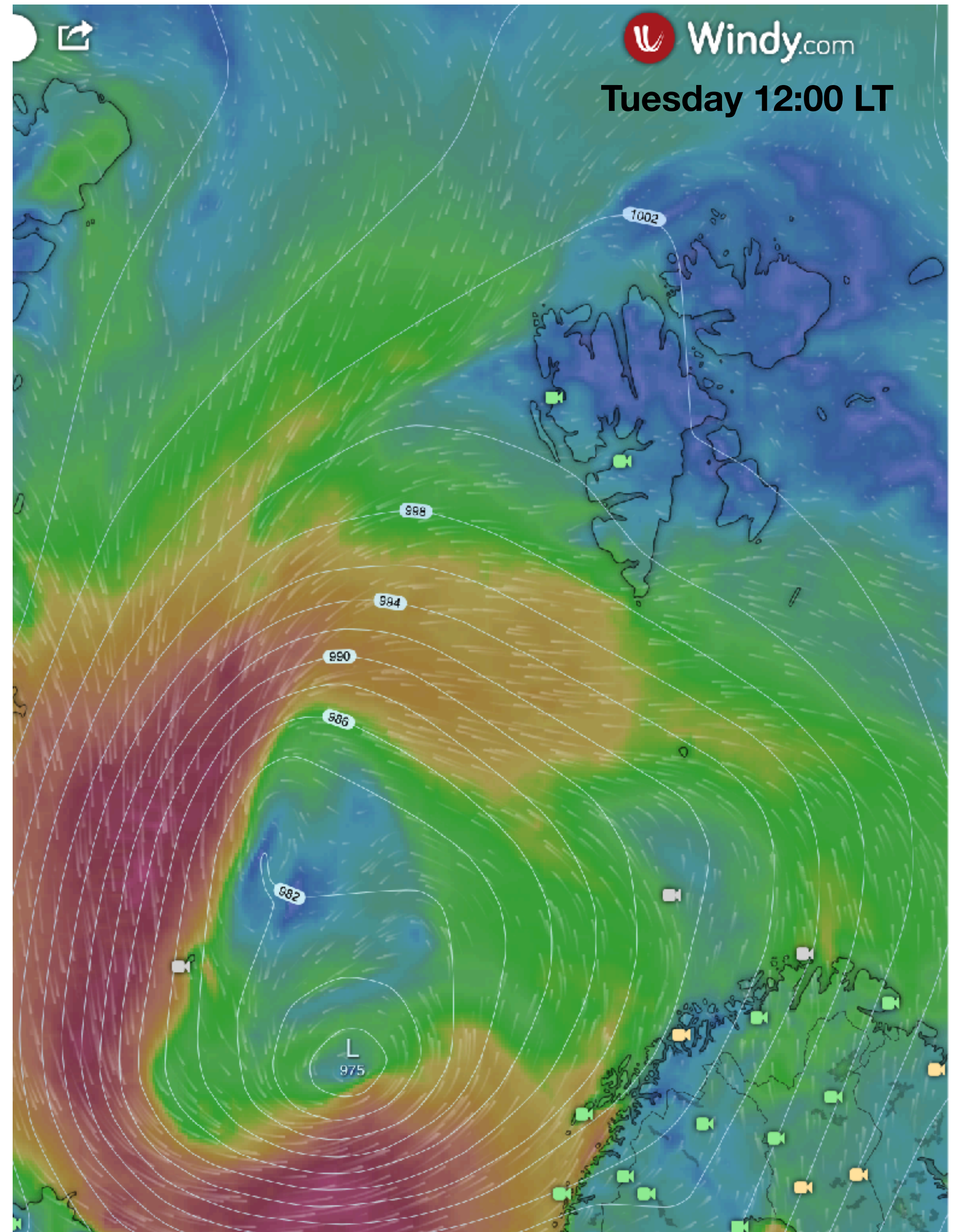
Monday 10:45 LT

13 minutes ago

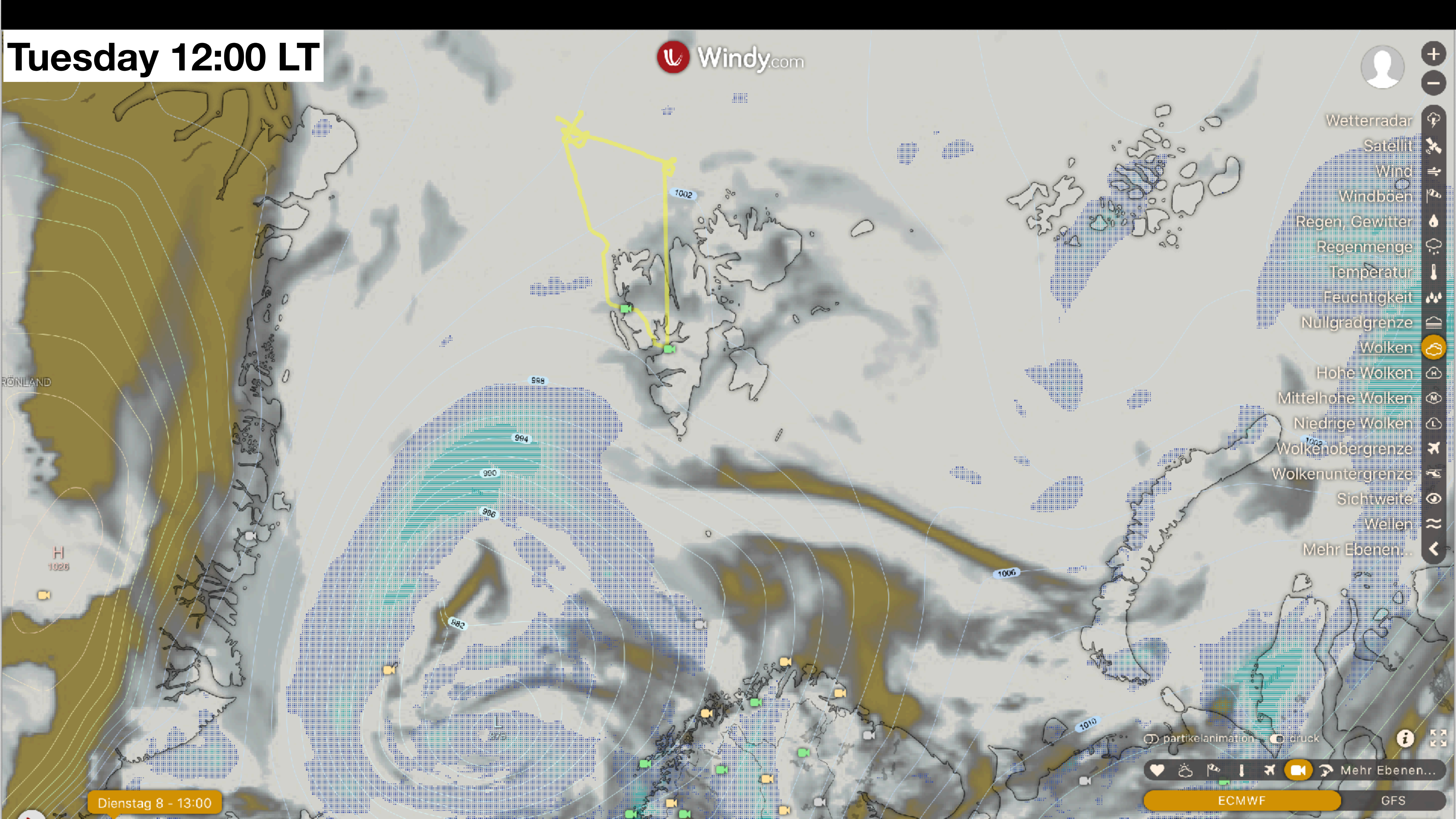


Tuesday 10:45 LT

5 hours ago



Tuesday 12:00 LT



- Wetterradar
- Satellit
- Wind
- Windböen
- Regen, Gewitter
- Regenmenge
- Temperatur
- Feuchtigkeit
- Nulgradgrenze
- Wolken
- Hohe Wolken
- Mittelhohe Wolken
- Niedrige Wolken
- Wolkenobergrenze
- Wolkenuntergrenze
- Sichtweite
- Wellen
- Mehr Ebenen...

Dienstag 8 - 13:00

partikelanimation druck

Mehr Ebenen...

ECMWF GFS

Wednesday 12:00 LT



Wetterradar

Satellit

Wind

Windböen

Regen, Gewitter

Regenmenge

Temperatur

Feuchtigkeit

Nulgradgrenze

Wolken

Hohe Wolken

Mittelhohe Wolken

Niedrige Wolken

Wolkenobergrenze

Wolkenuntergrenze

Sichtweite

Wellen

Mehr Ebenen...

FRÖNLAND

H
1026

1002

998

994

990

986

982

980

1014

1010

996

995

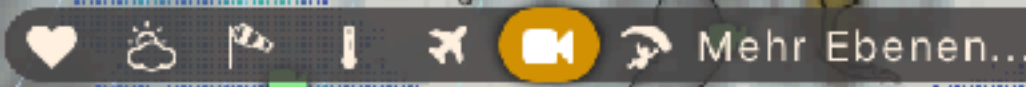
Mittwoch 9 - 13:00

partikelanimation

druck

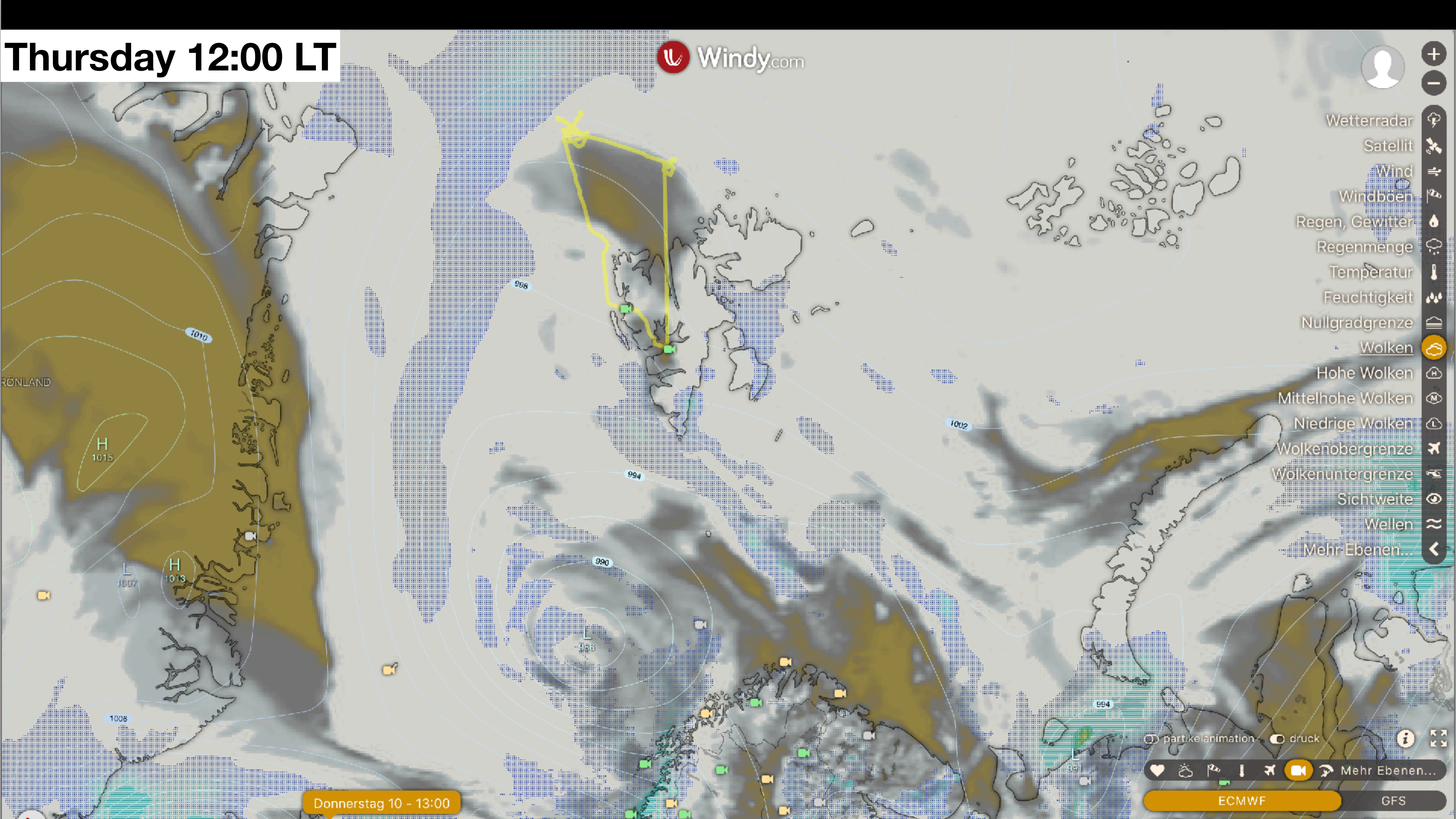


Mehr Ebenen...



ECMWF GFS

Thursday 12:00 LT



- + (Zoom In)
- (Zoom Out)
- Wetterradar
- Satellit
- Wind
- Windböen
- Regen, Gewitter
- Regenmenge
- Temperatur
- Feuchtigkeit
- Nullgradgrenze
- Wolken
- Hohe Wolken
- Mittelhohe Wolken
- Niedrige Wolken
- Wolkenobergrenze
- Wolkenuntergrenze
- Sichtweite
- Wellen
- Mehr Ebenen...

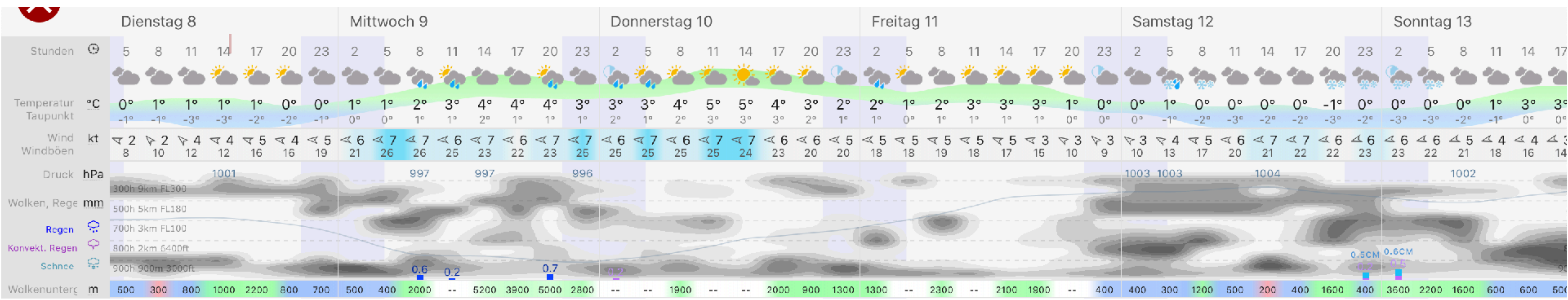
Donnerstag 10 - 13:00

partikelanimation druck

Mehr Ebenen...

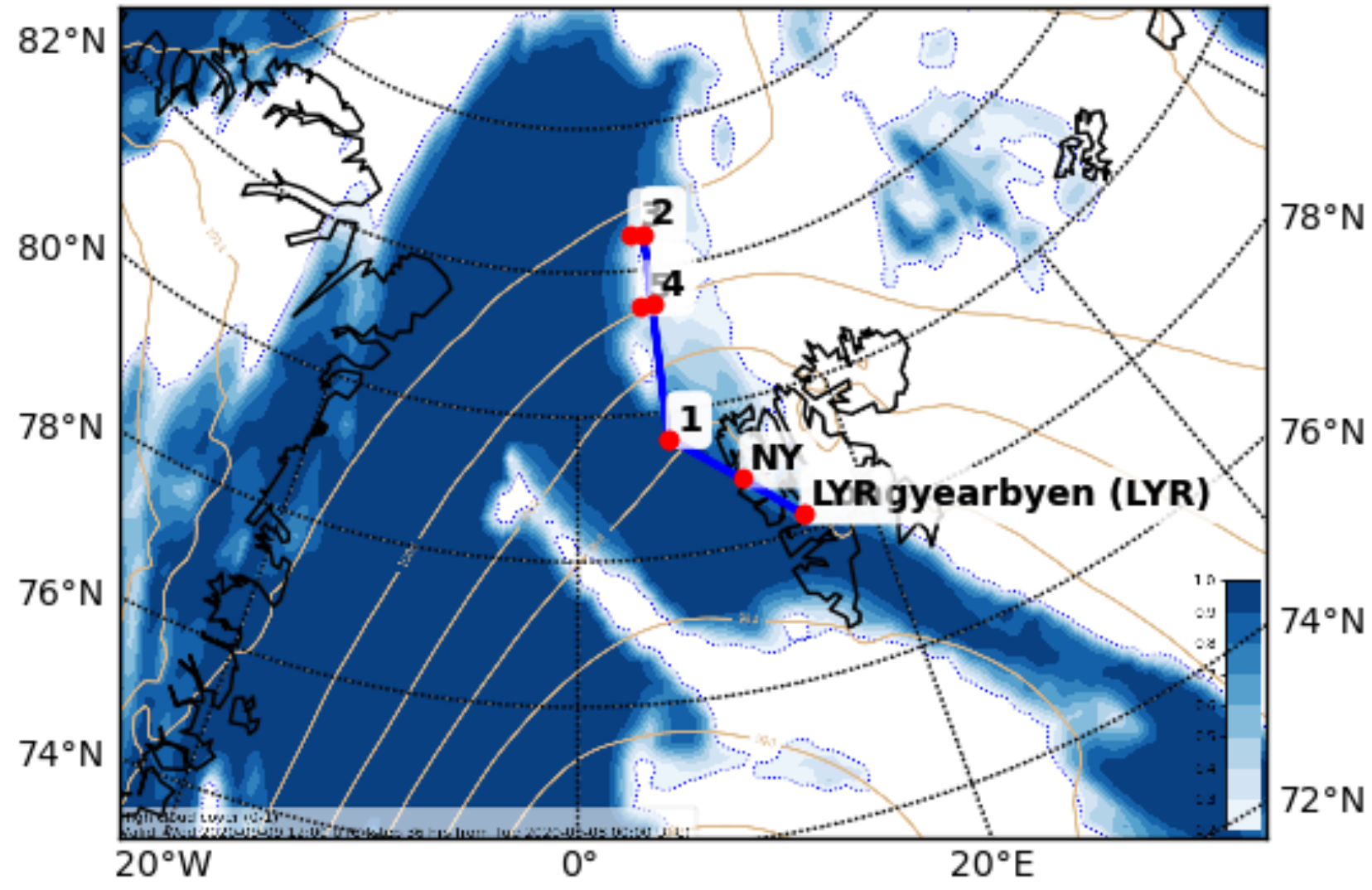
ECMWF GFS

Meteogram Longyearbyen

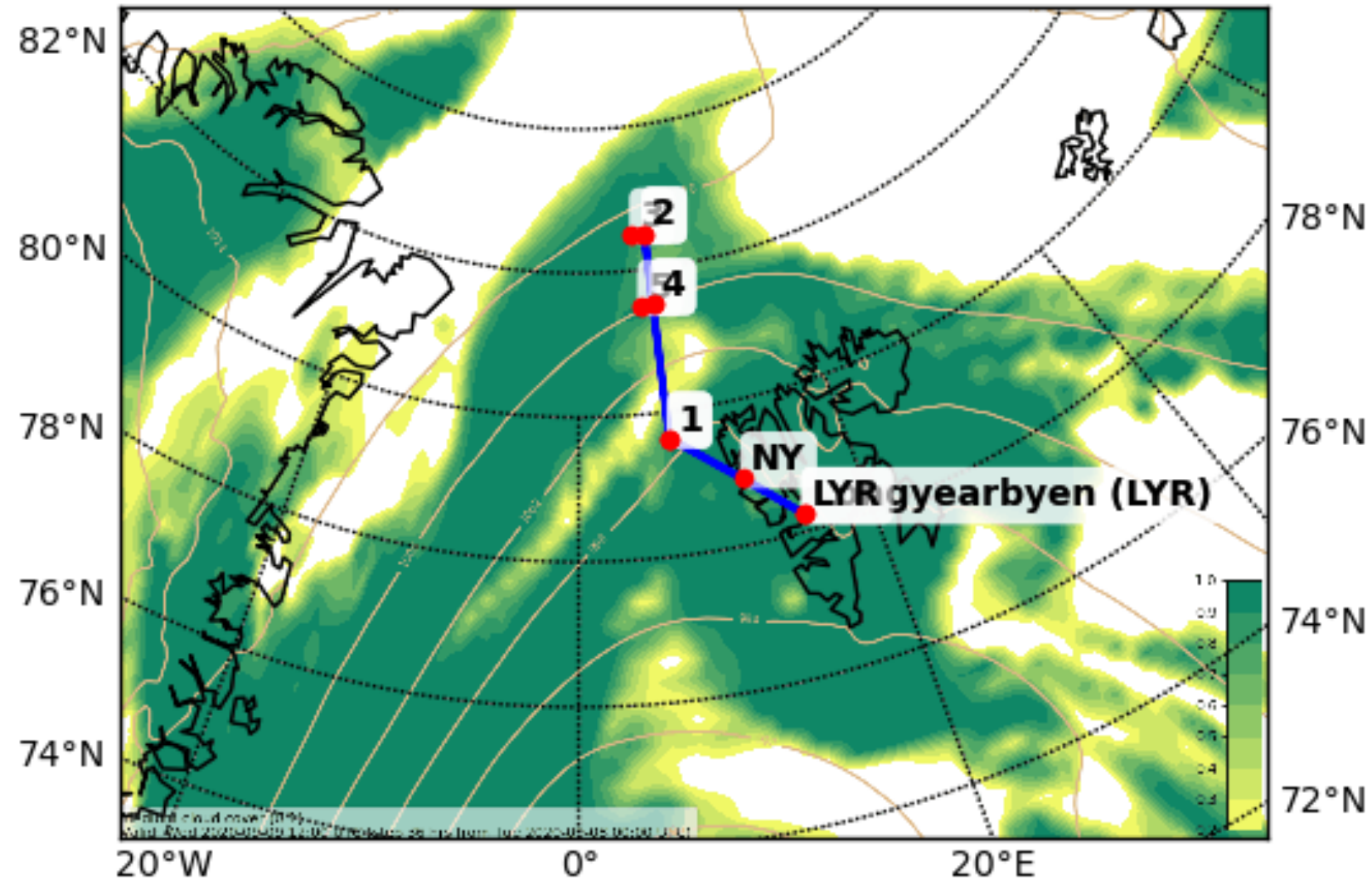


Wednesday

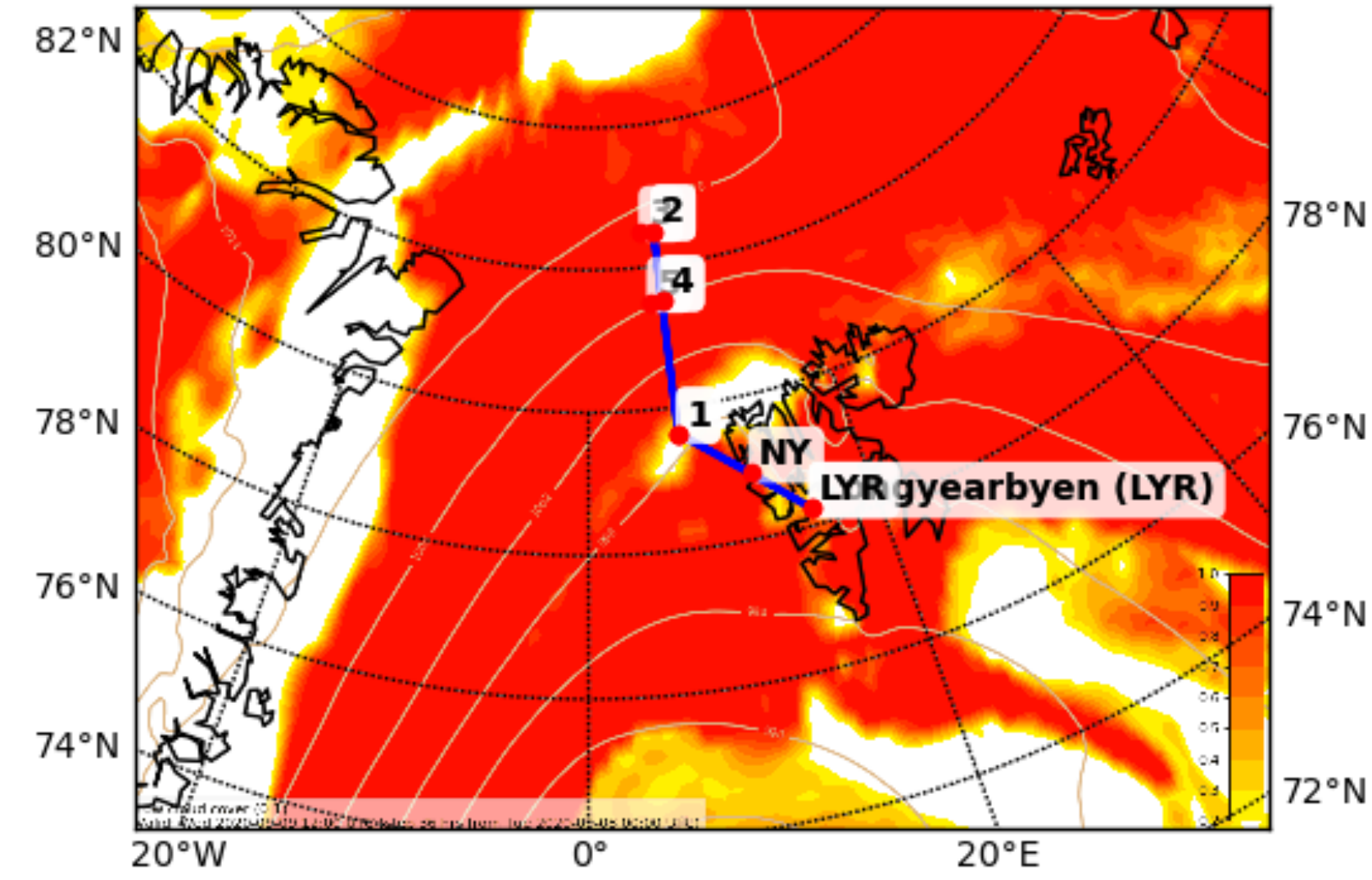
Cloud Cover (0-1) (High Cloud Cover)
Valid: Mi 2020-09-09 12:00 UTC (step 36 hrs from Di 2020-0



Cloud Cover (0-1) (Medium Cloud Cover)
Valid: Mi 2020-09-09 12:00 UTC (step 36 hrs from Di 2020-0



Cloud Cover (0-1) (Low Cloud Cover)
Valid: Mi 2020-09-09 12:00 UTC (step 36 hrs from Di 2020-0



Wednesday

Cloud Cover (0-1) Vertical Section
Valid: Mi 2020-09-09 12:00 UTC (step 36 hrs from Di 2020-09-08 00:00 UTC)

