

Weather briefing HALO-(AC)³

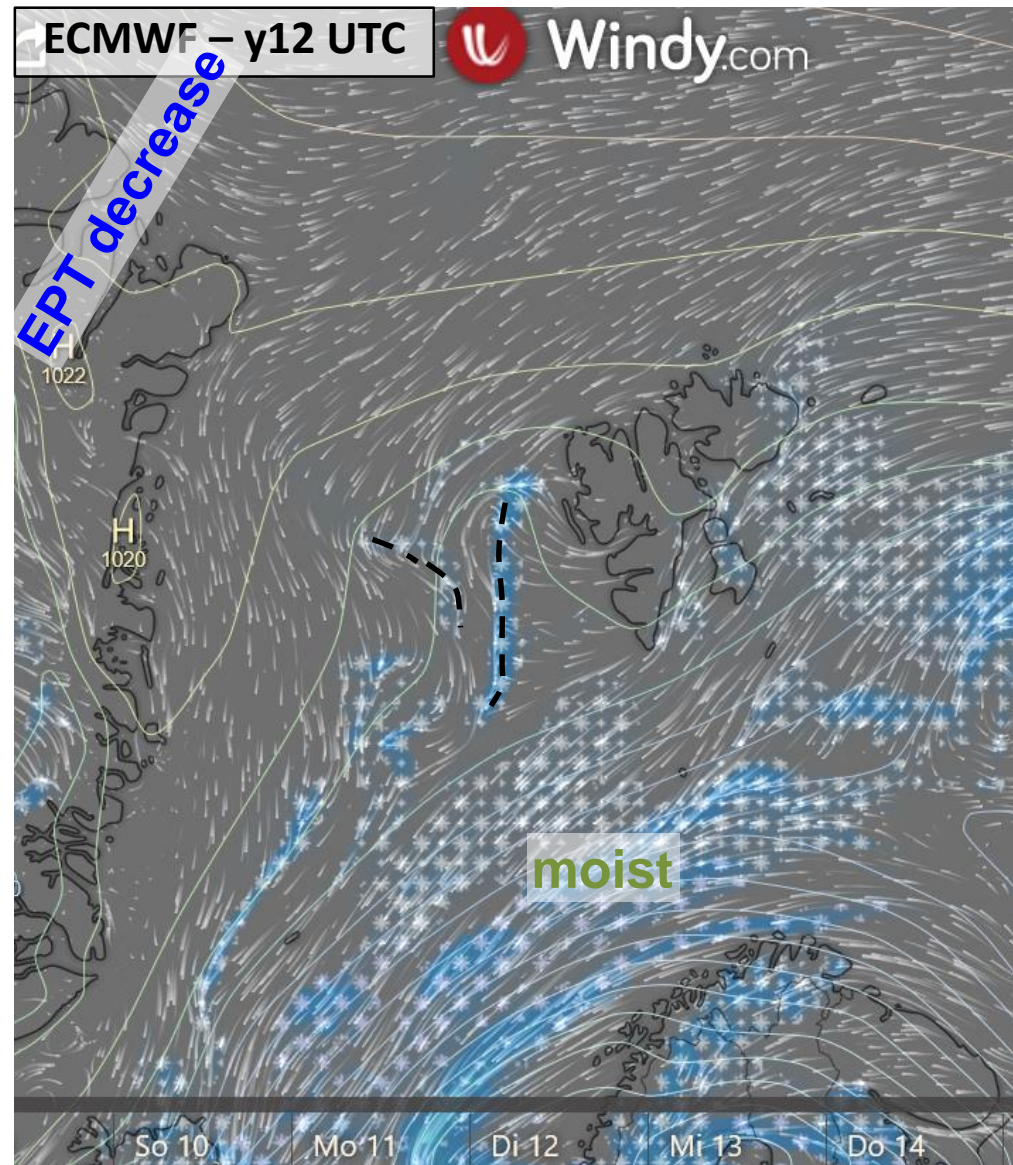
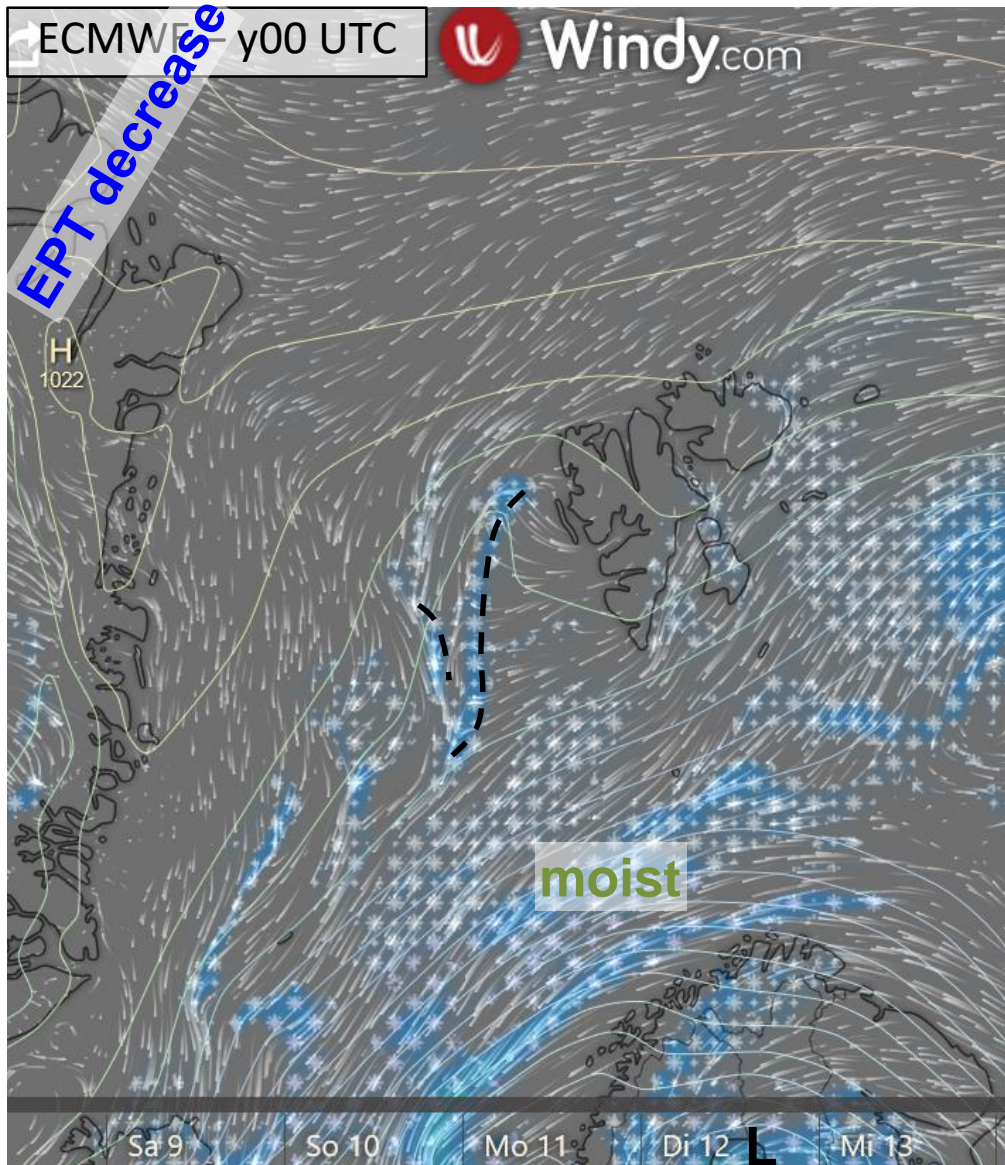
Wednesday, 2022-04-06, 09:00 LT

Forecast comparison
yesterday 00 UTC vs. **yesterday 12 UTC/today 00 UTC**
ECMWF & ICON

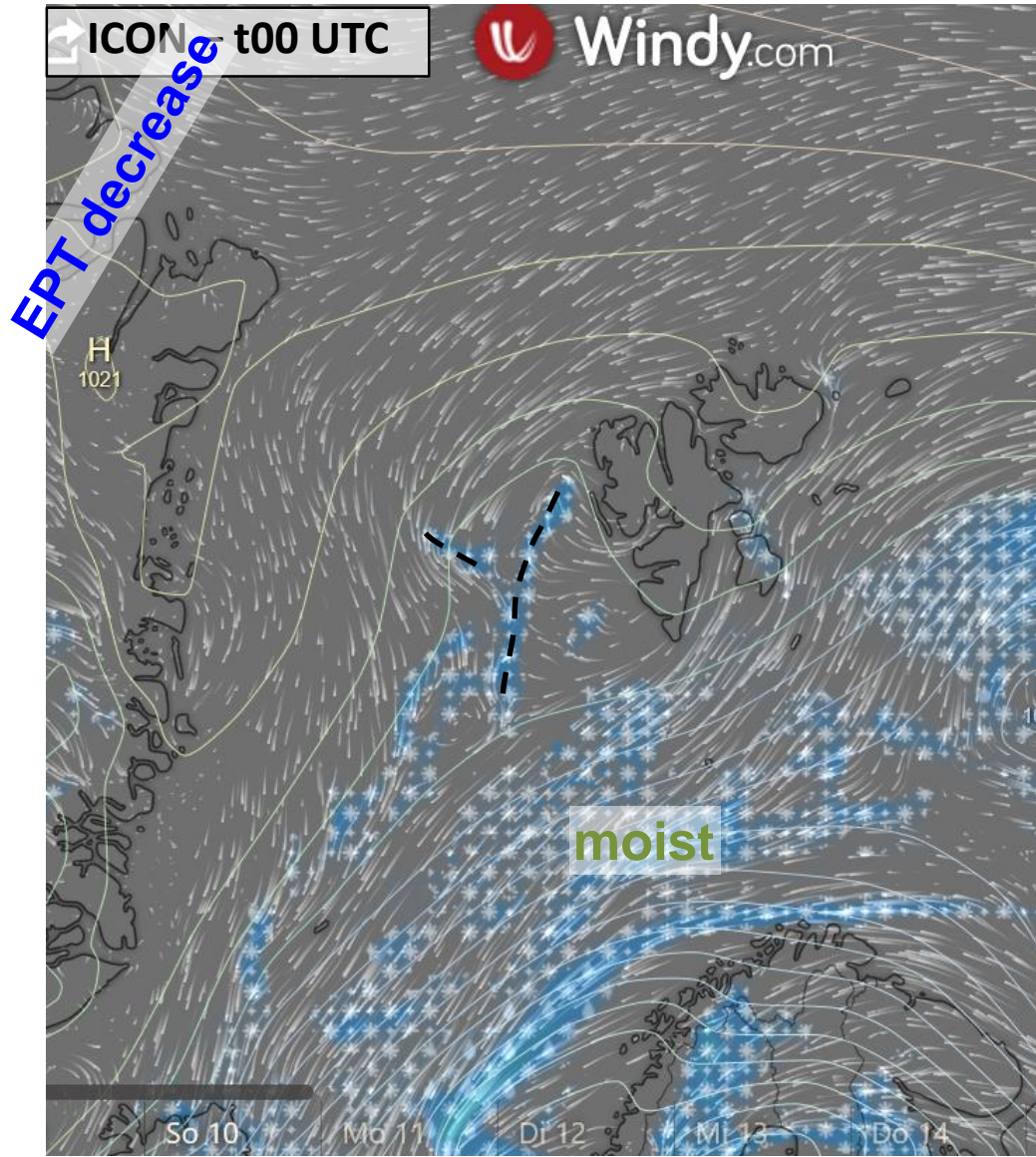
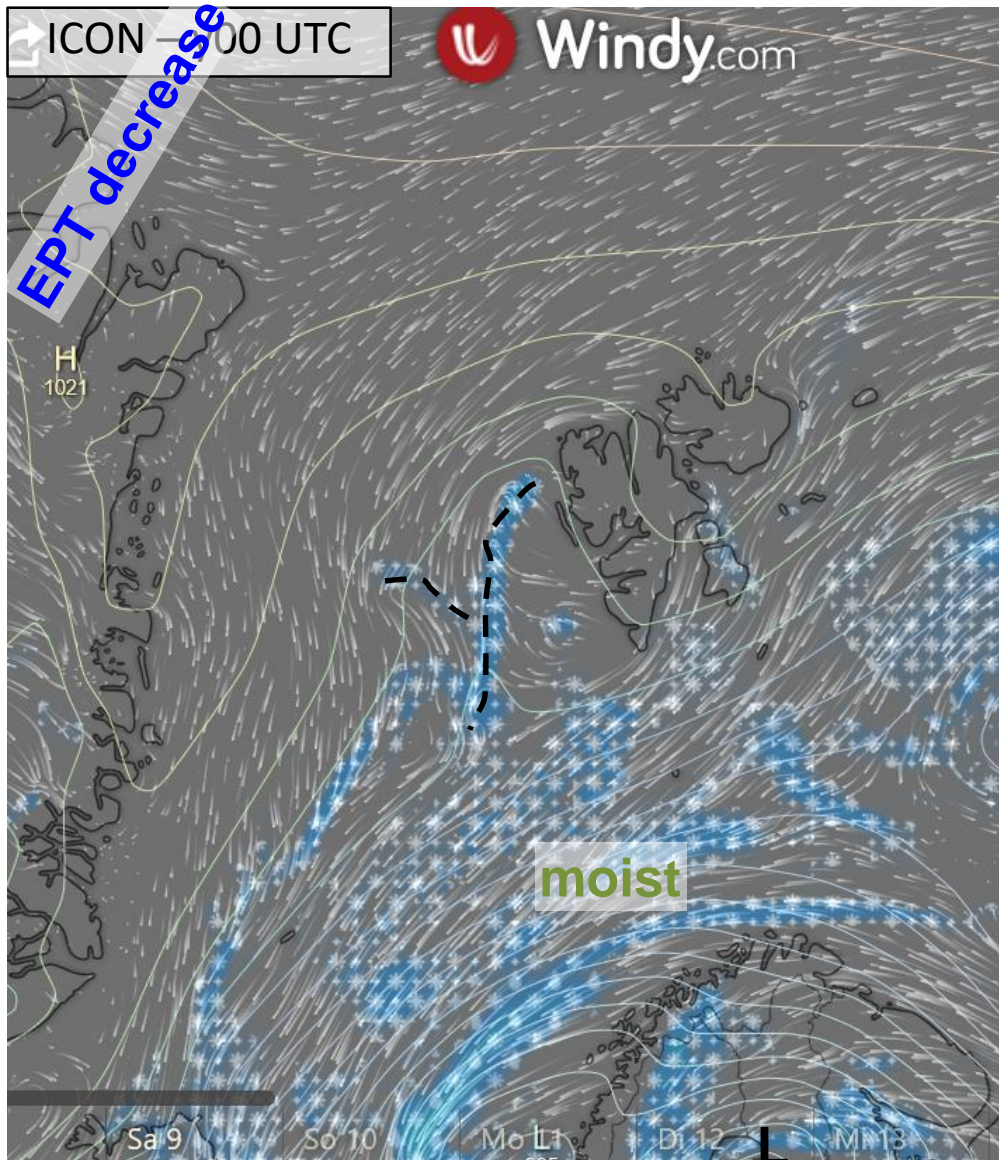
CAA: Cold Air Advection

WAA: Warm Air Advection

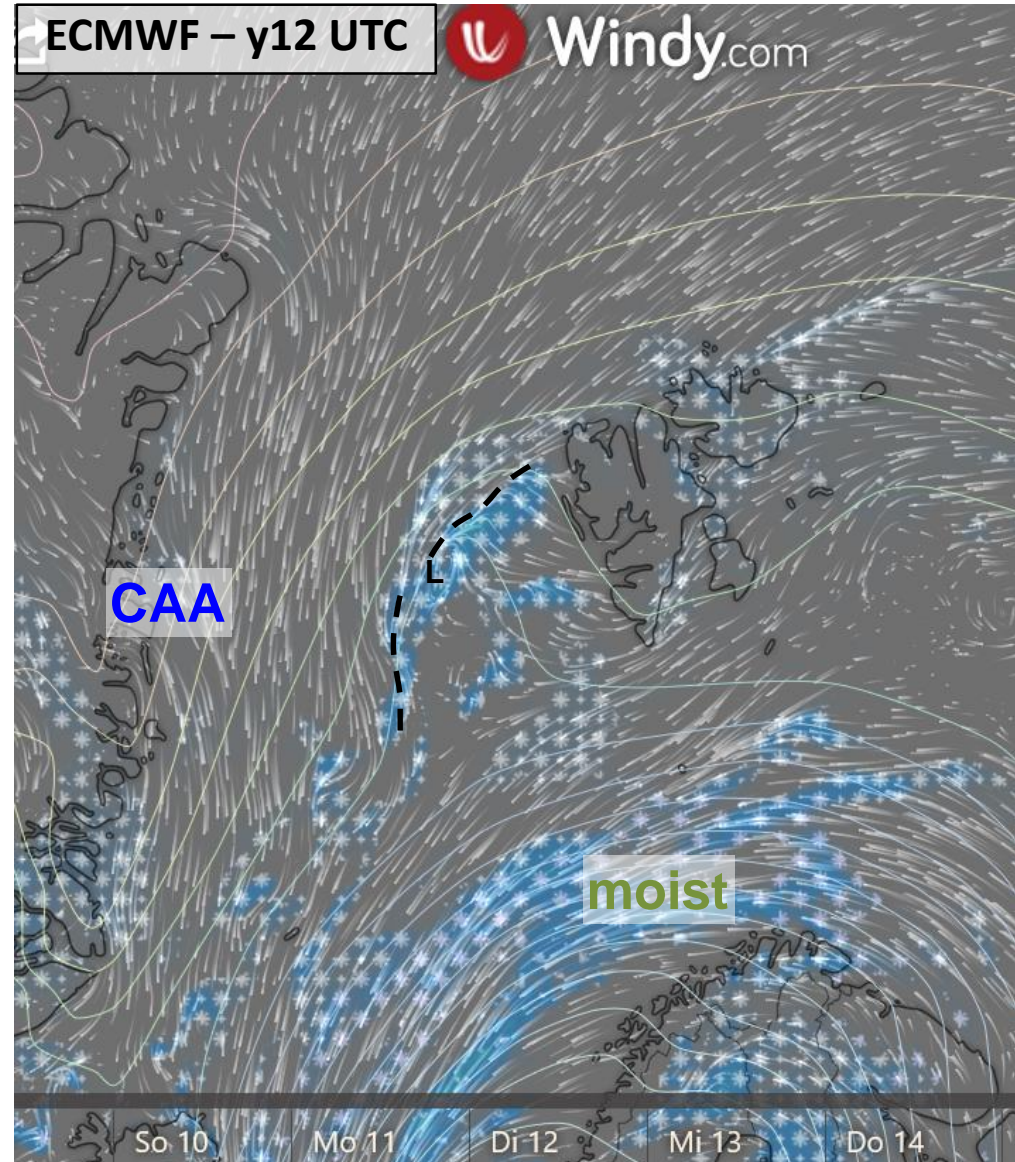
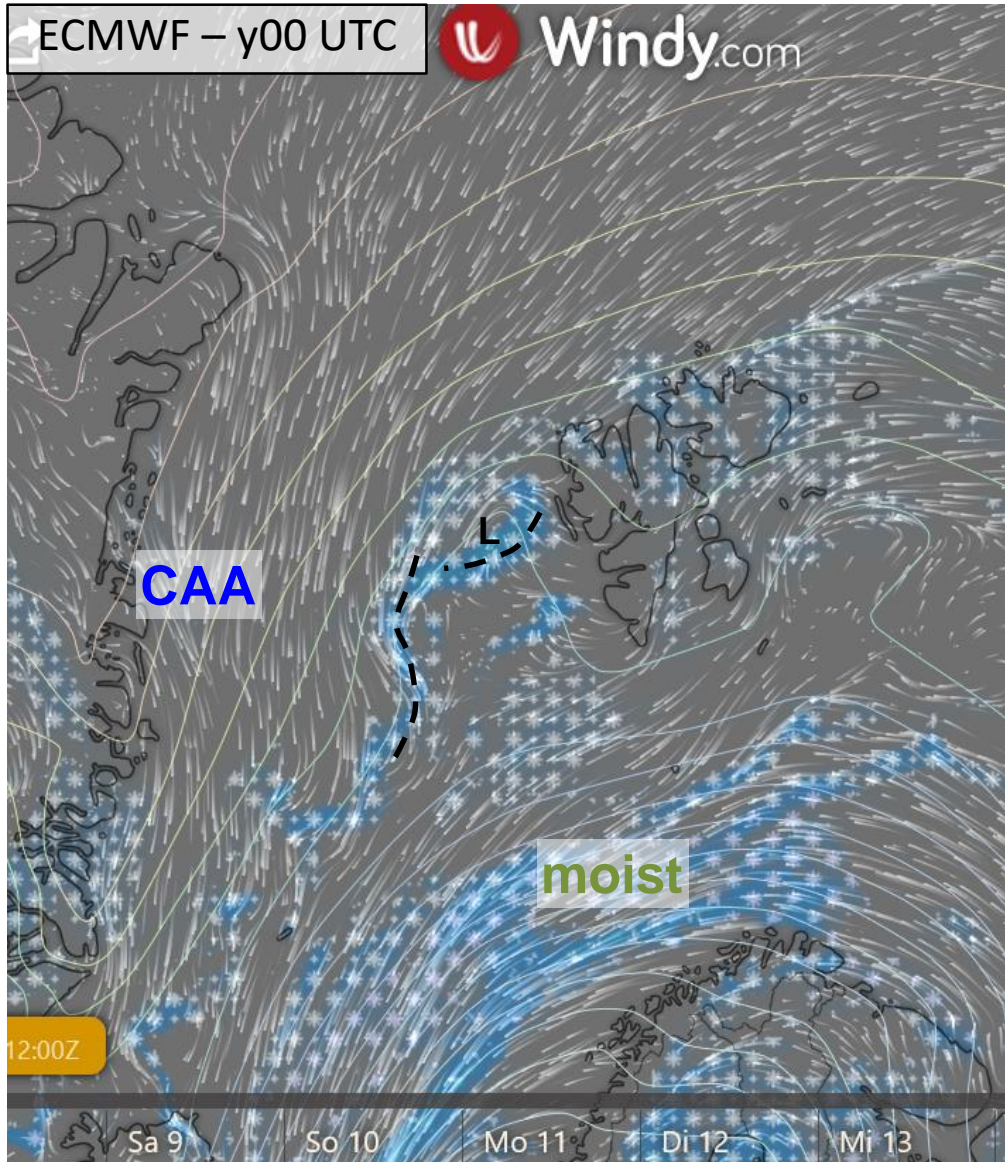
Wednesday, 2022-04-06 12 UTC



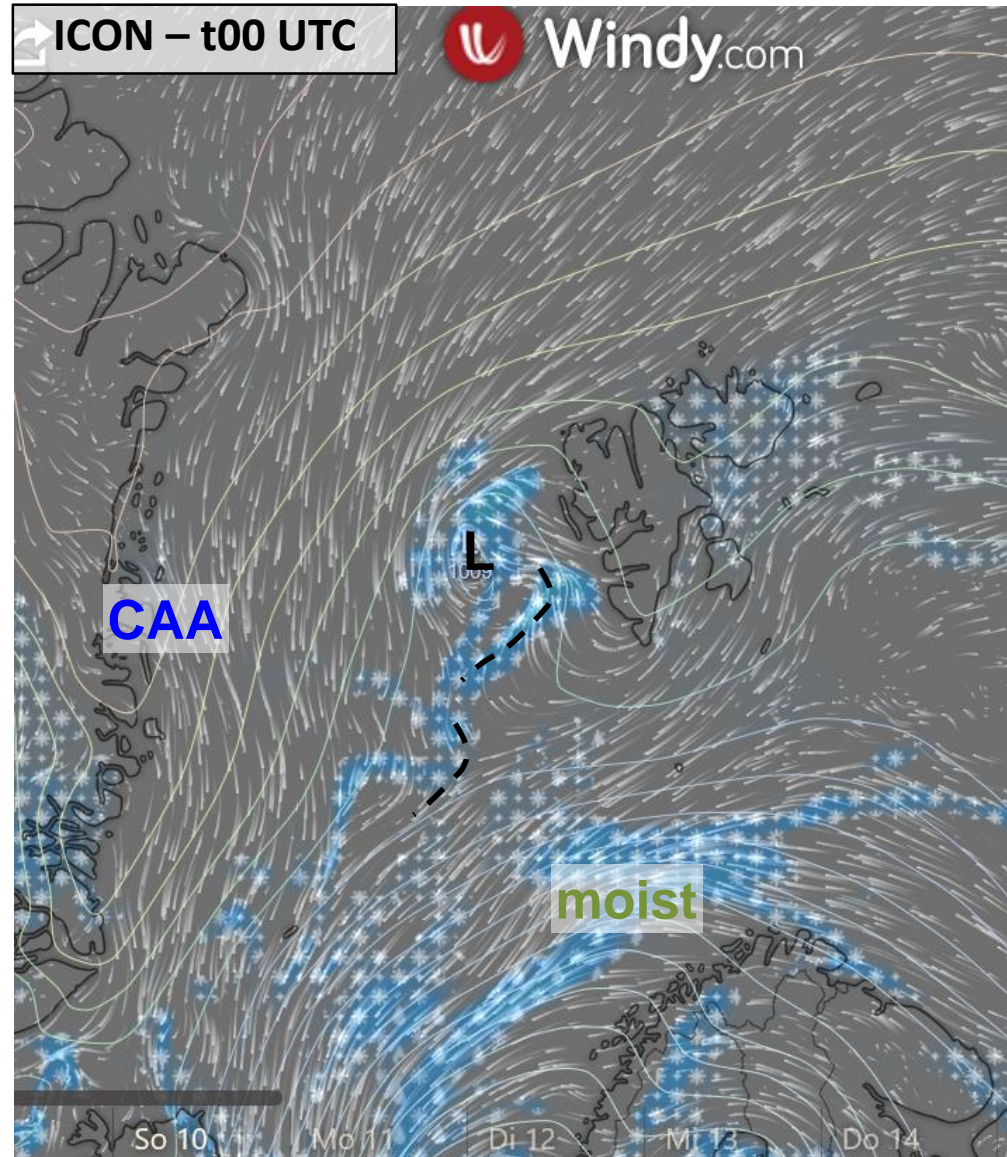
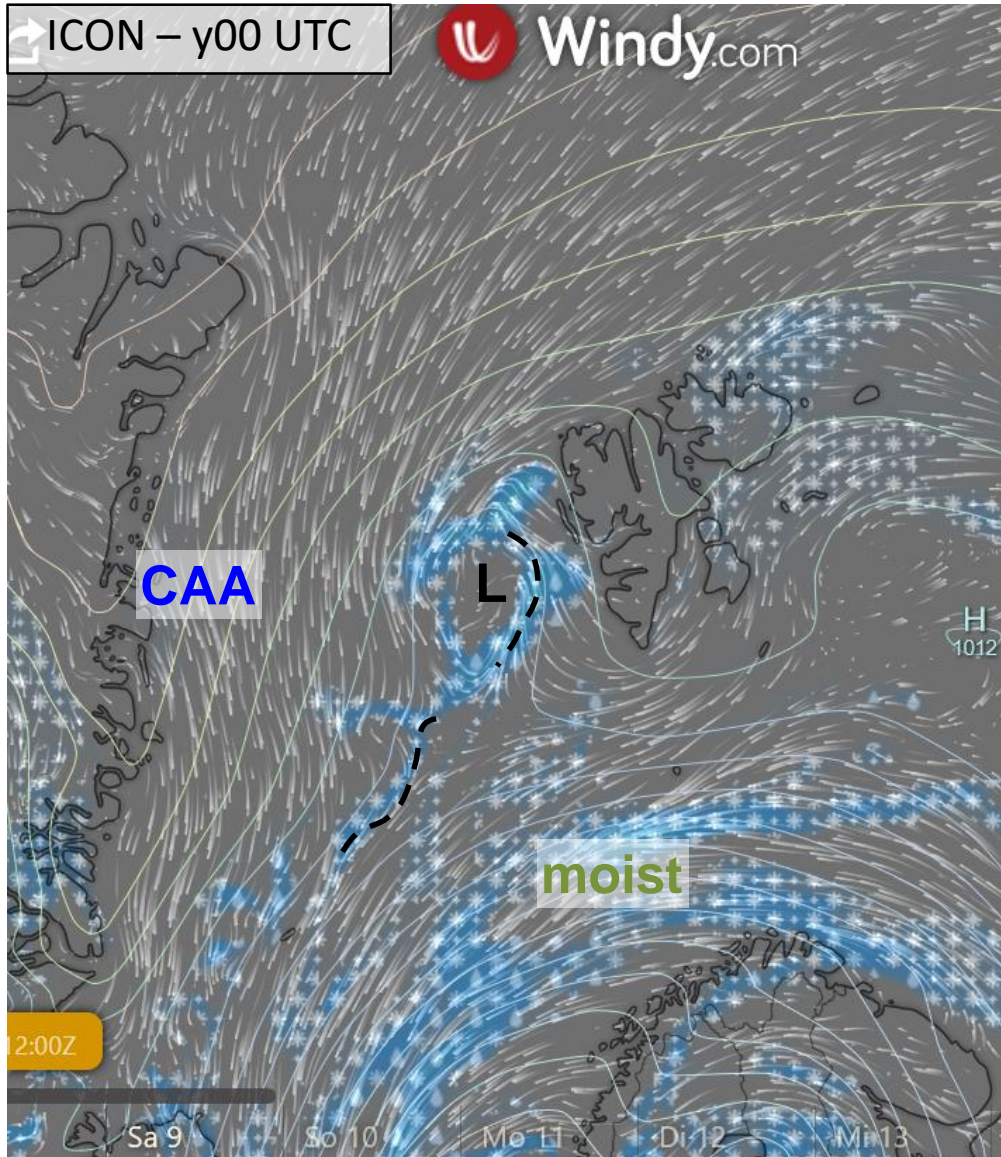
Wednesday, 2022-04-06 12 UTC



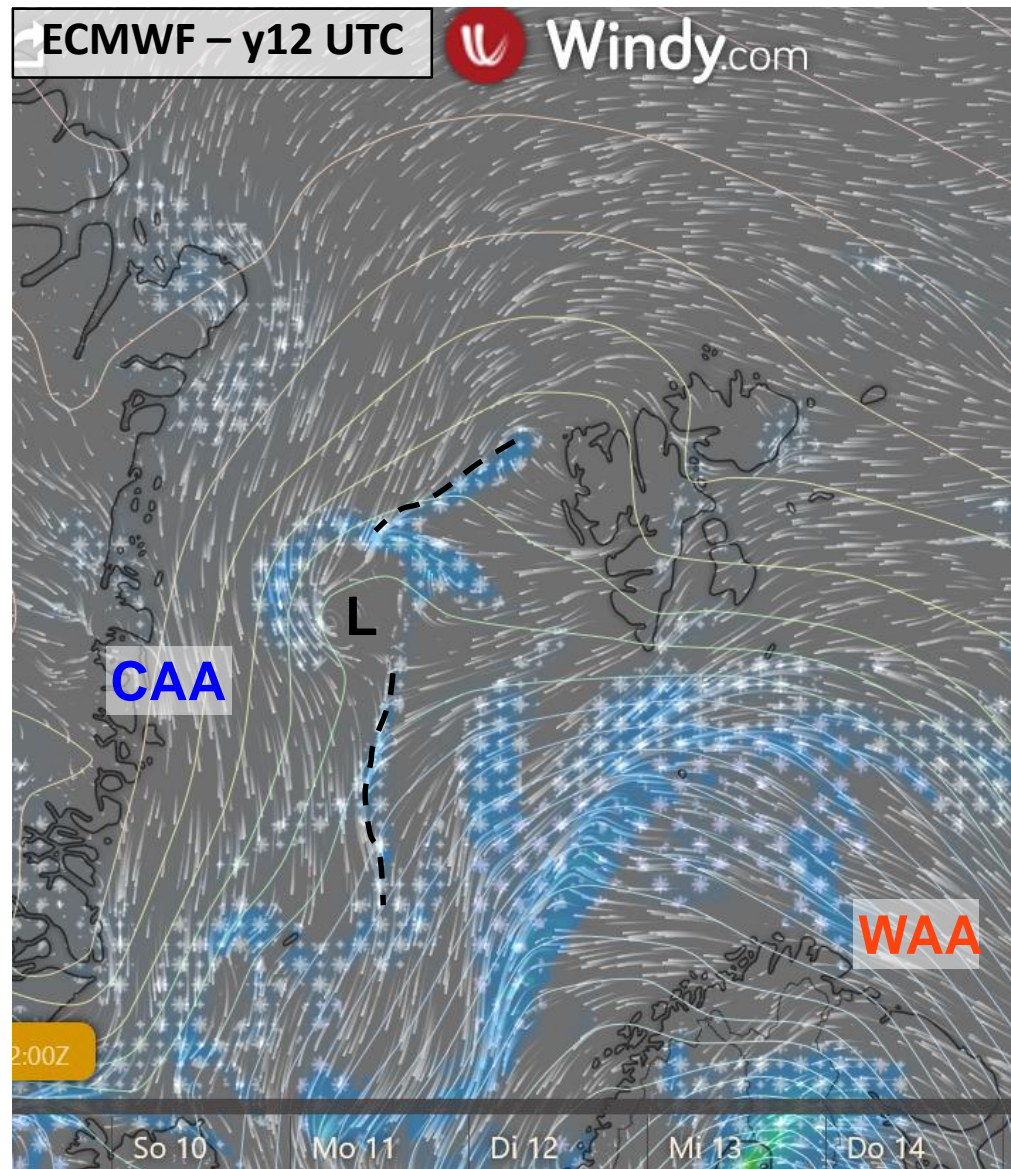
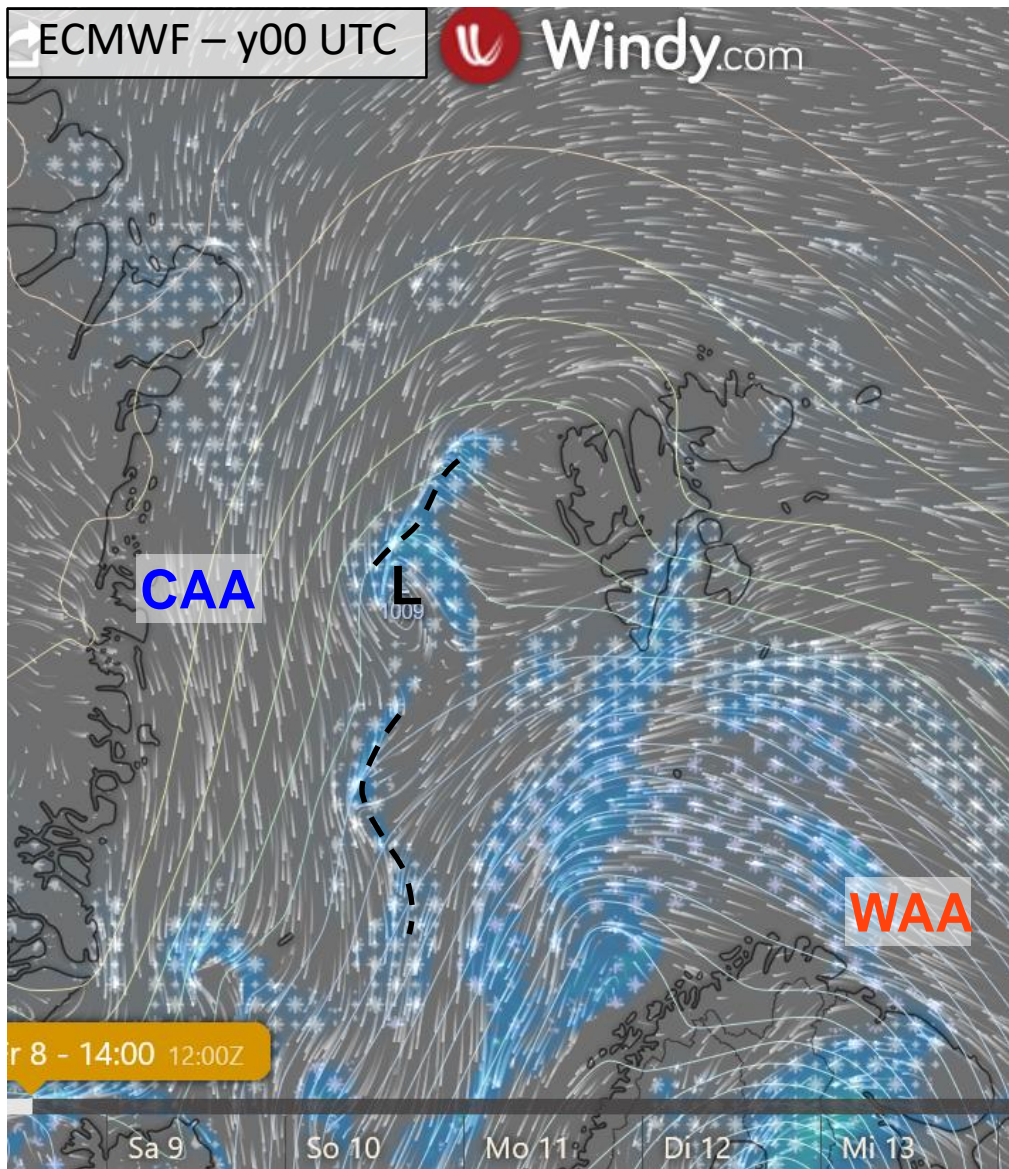
Thursday, 2022-04-07 12 UTC



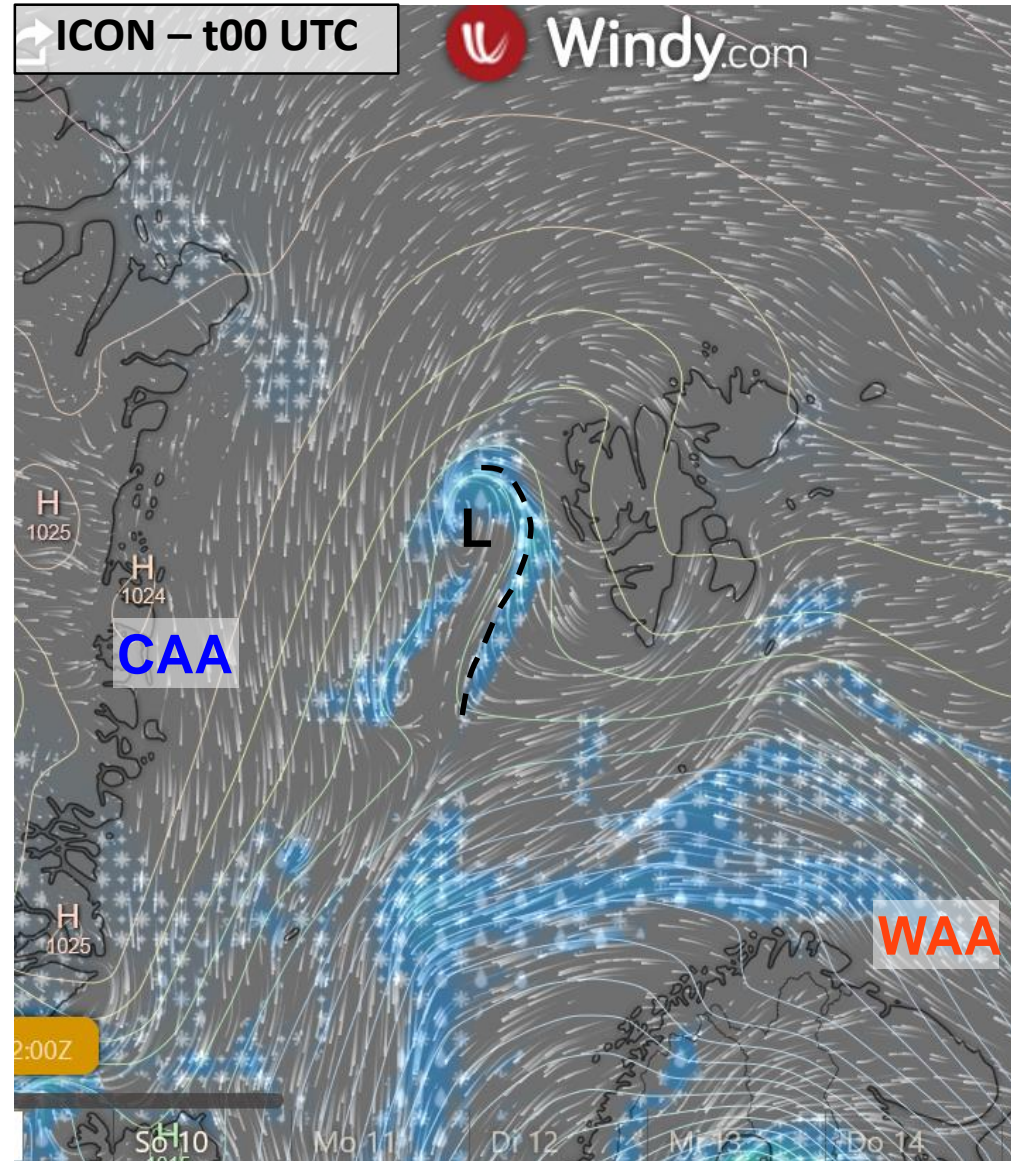
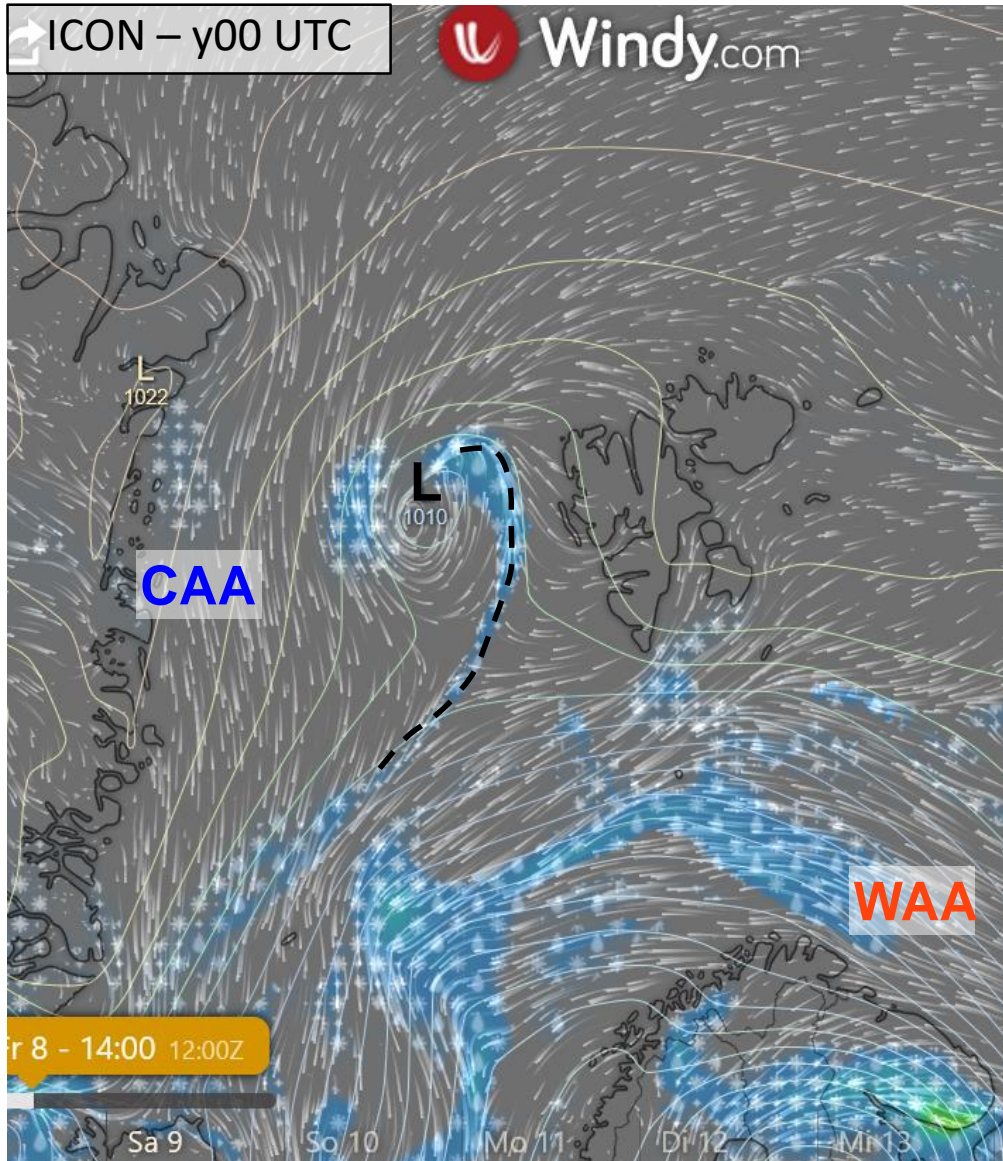
Thursday, 2022-04-07 12 UTC



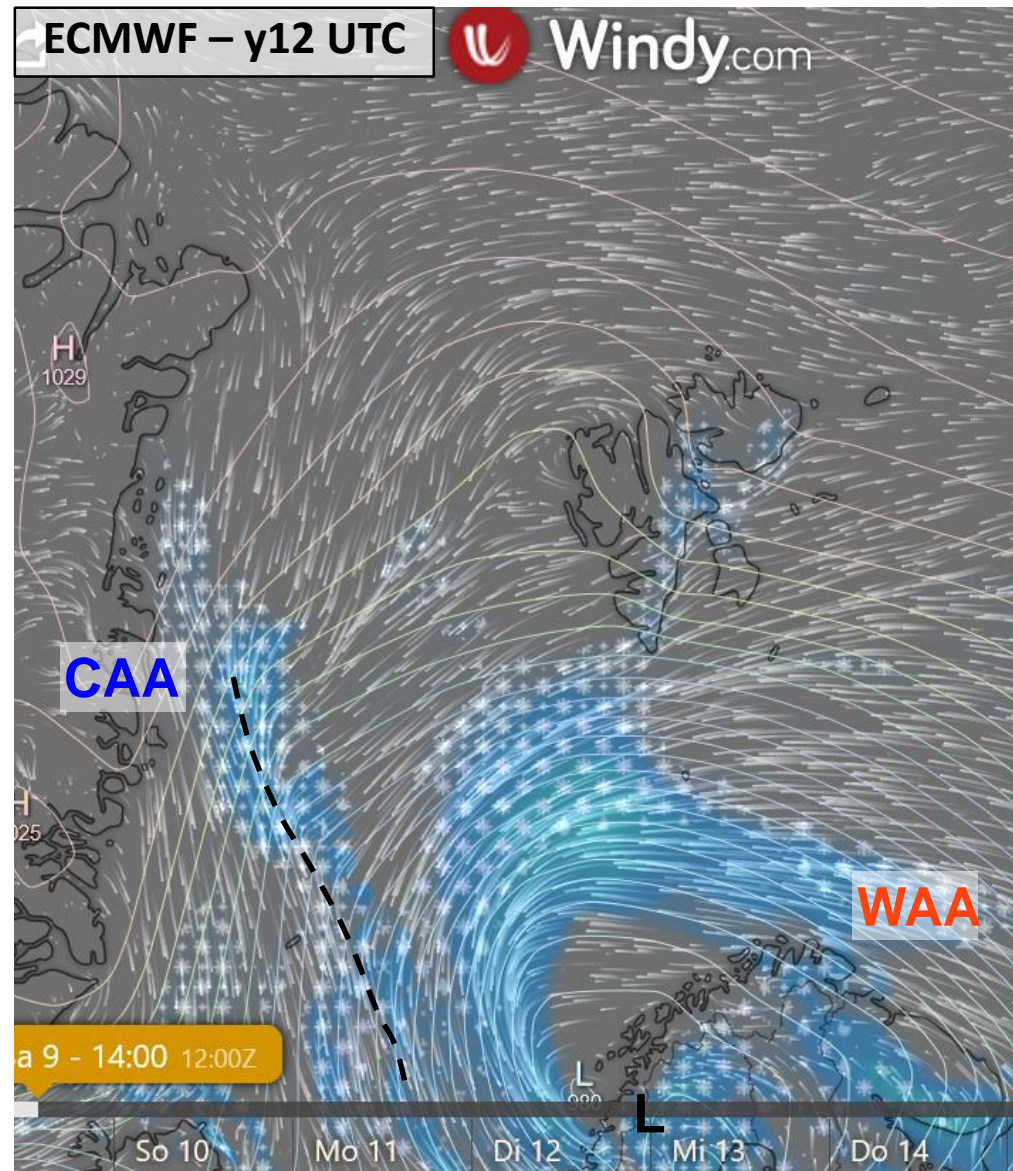
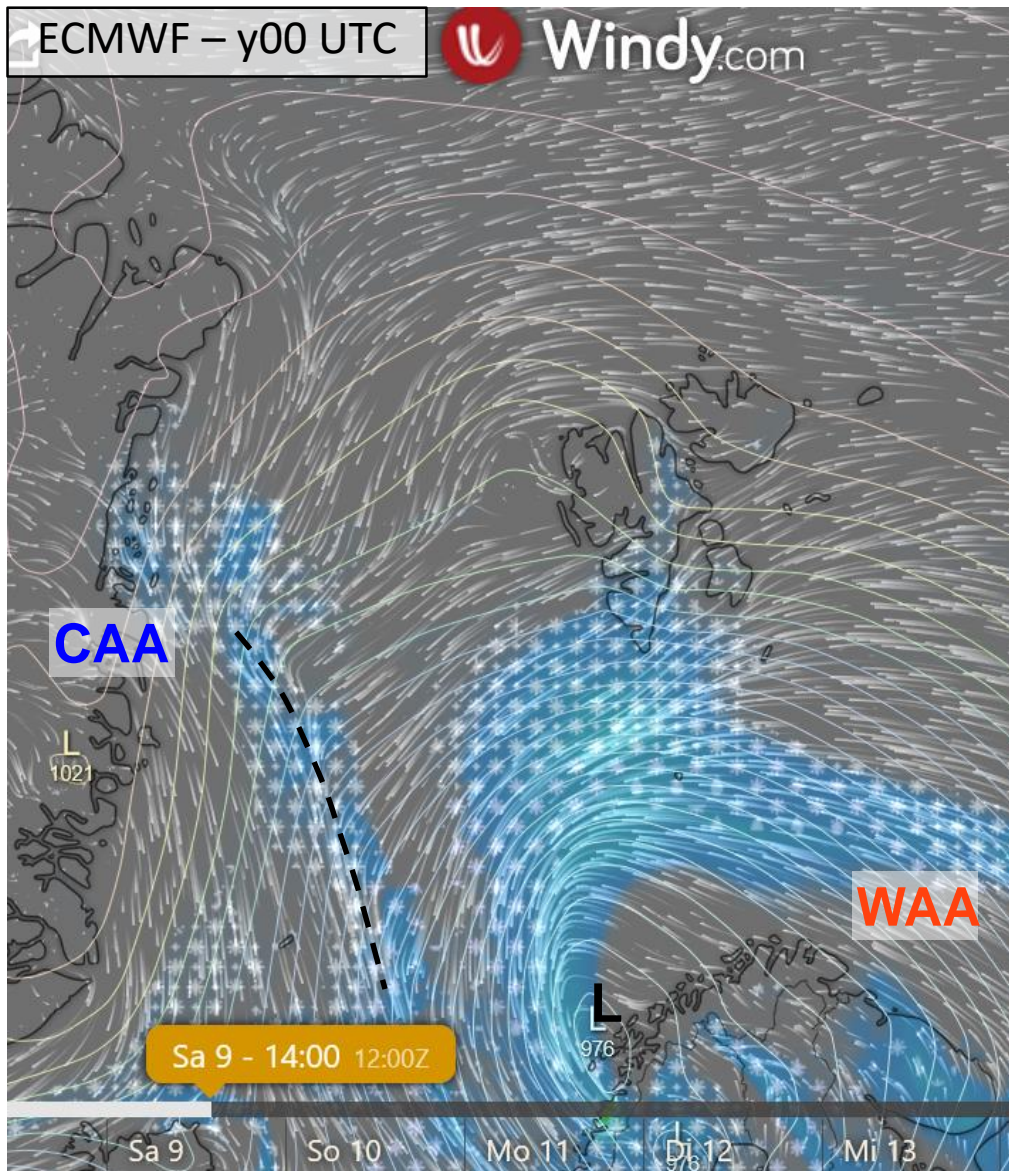
Friday, 2022-04-08 12 UTC



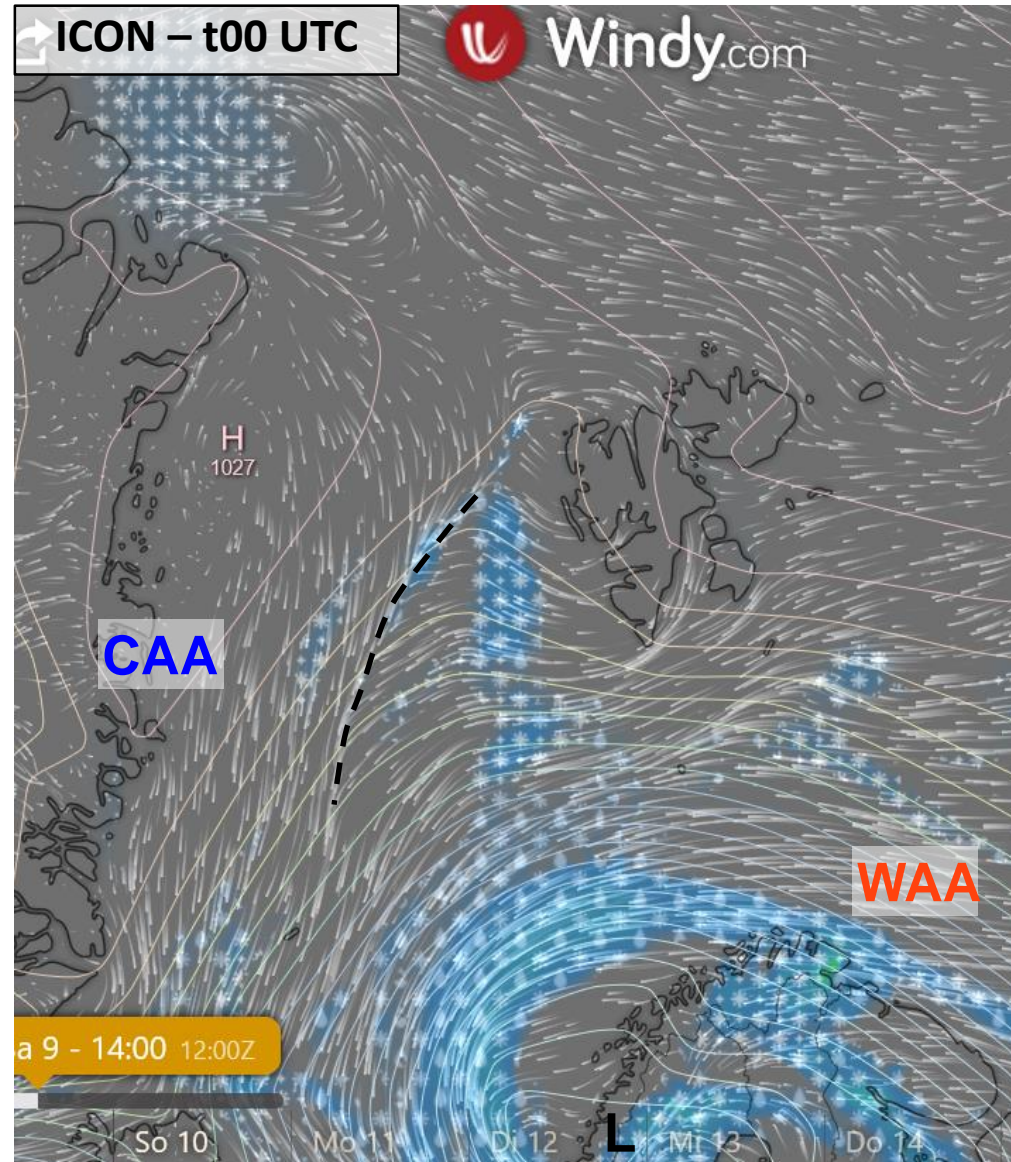
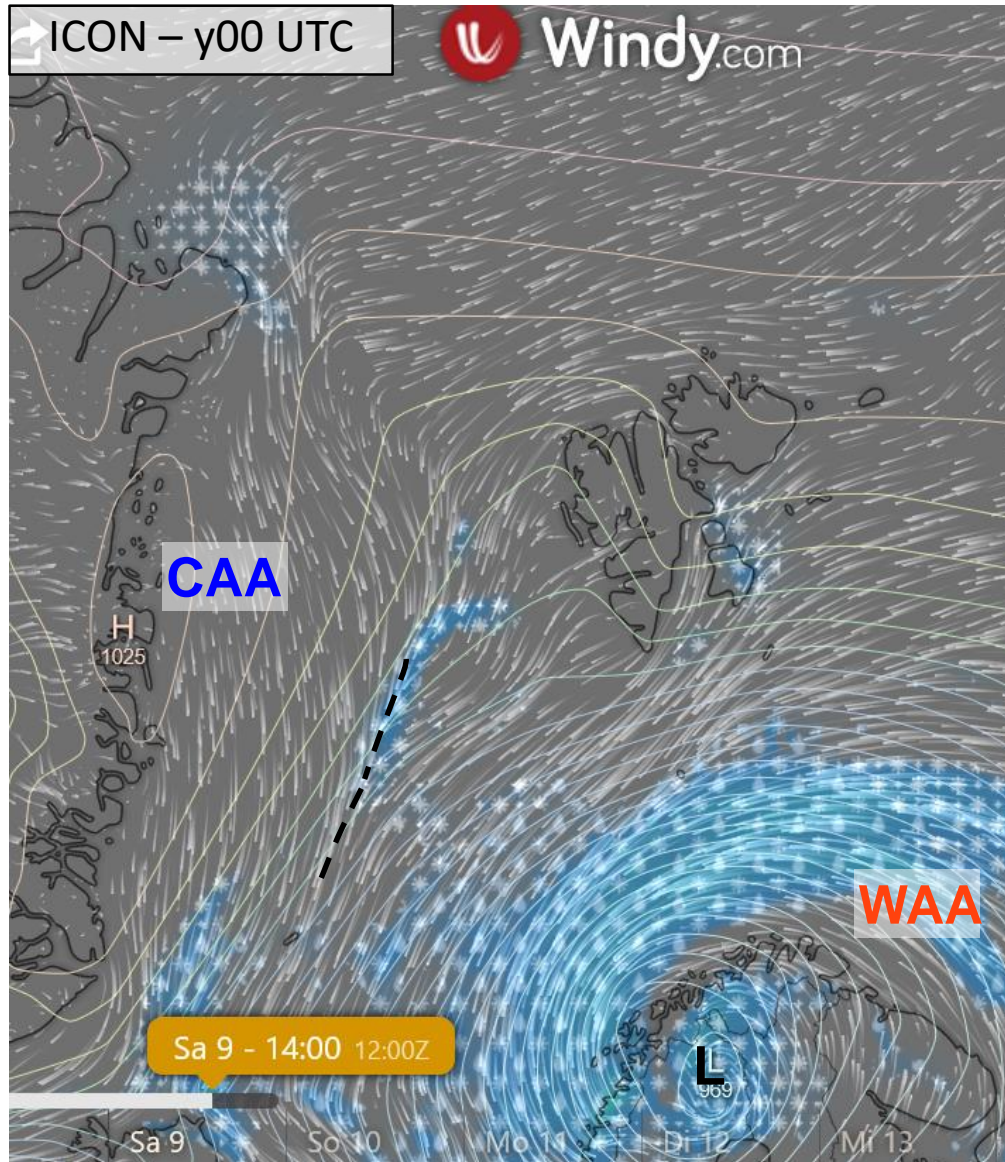
Friday, 2022-04-08 12 UTC



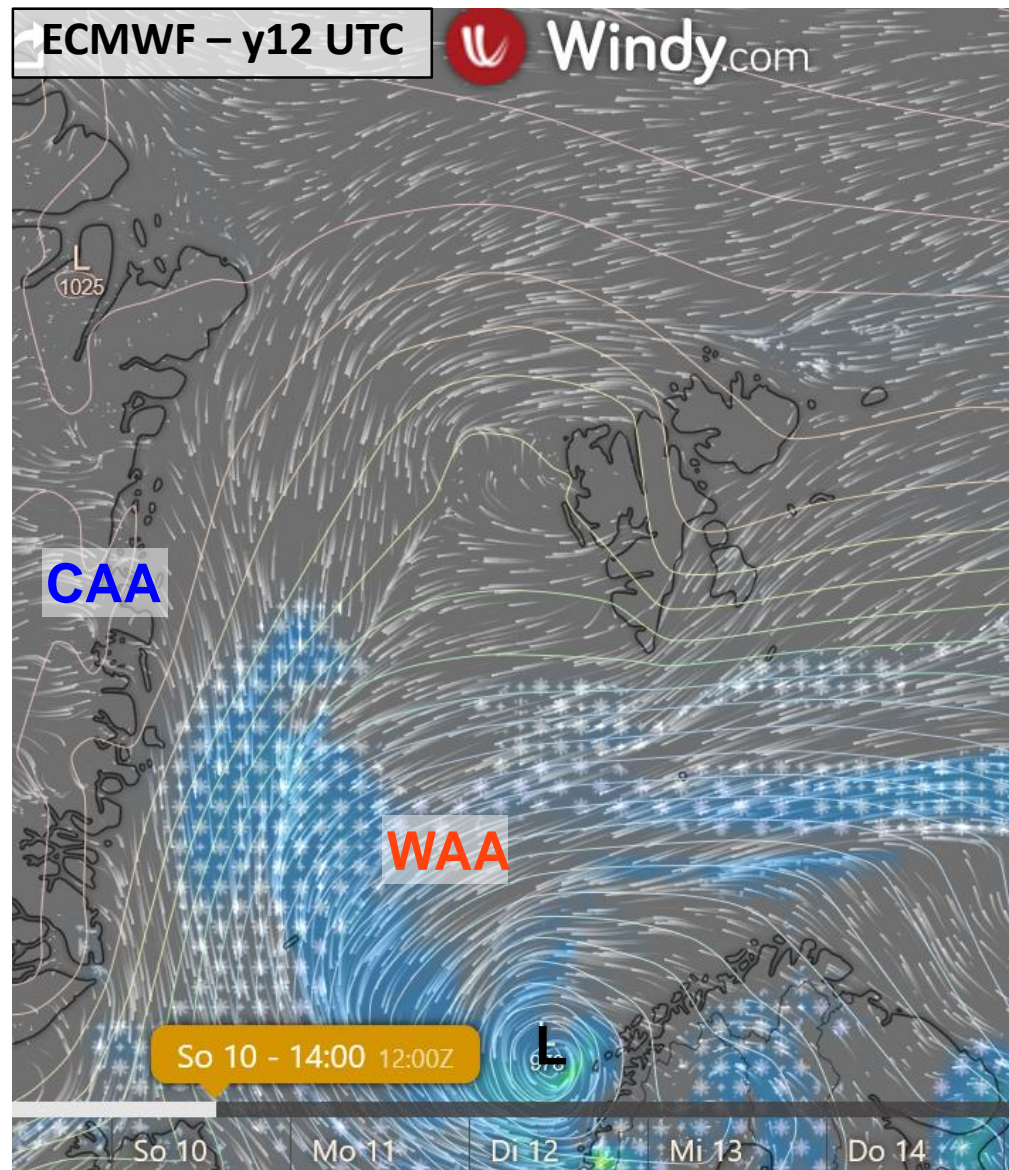
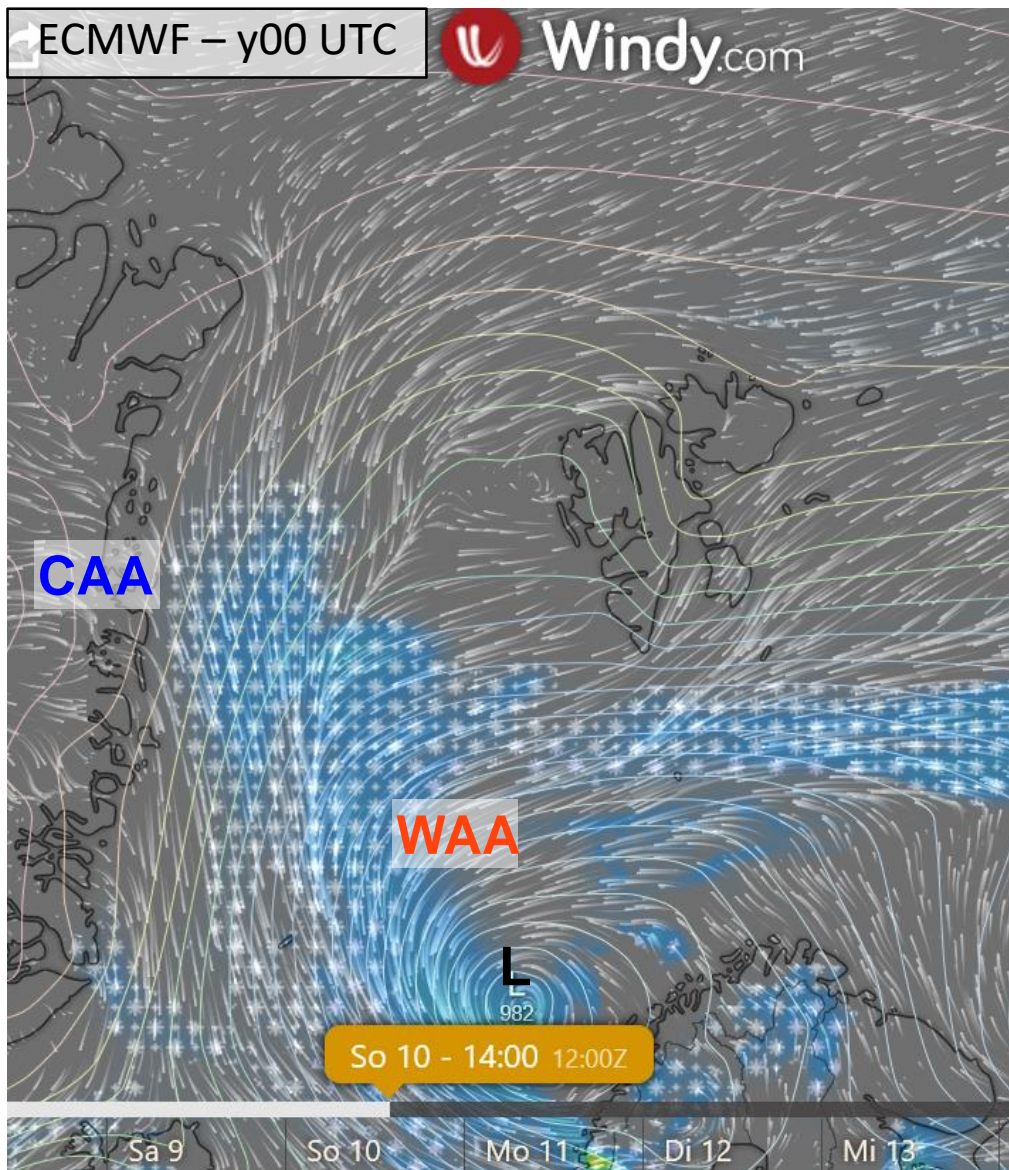
Saturday, 2022-04-09 12 UTC



Saturday, 2022-04-09 12 UTC

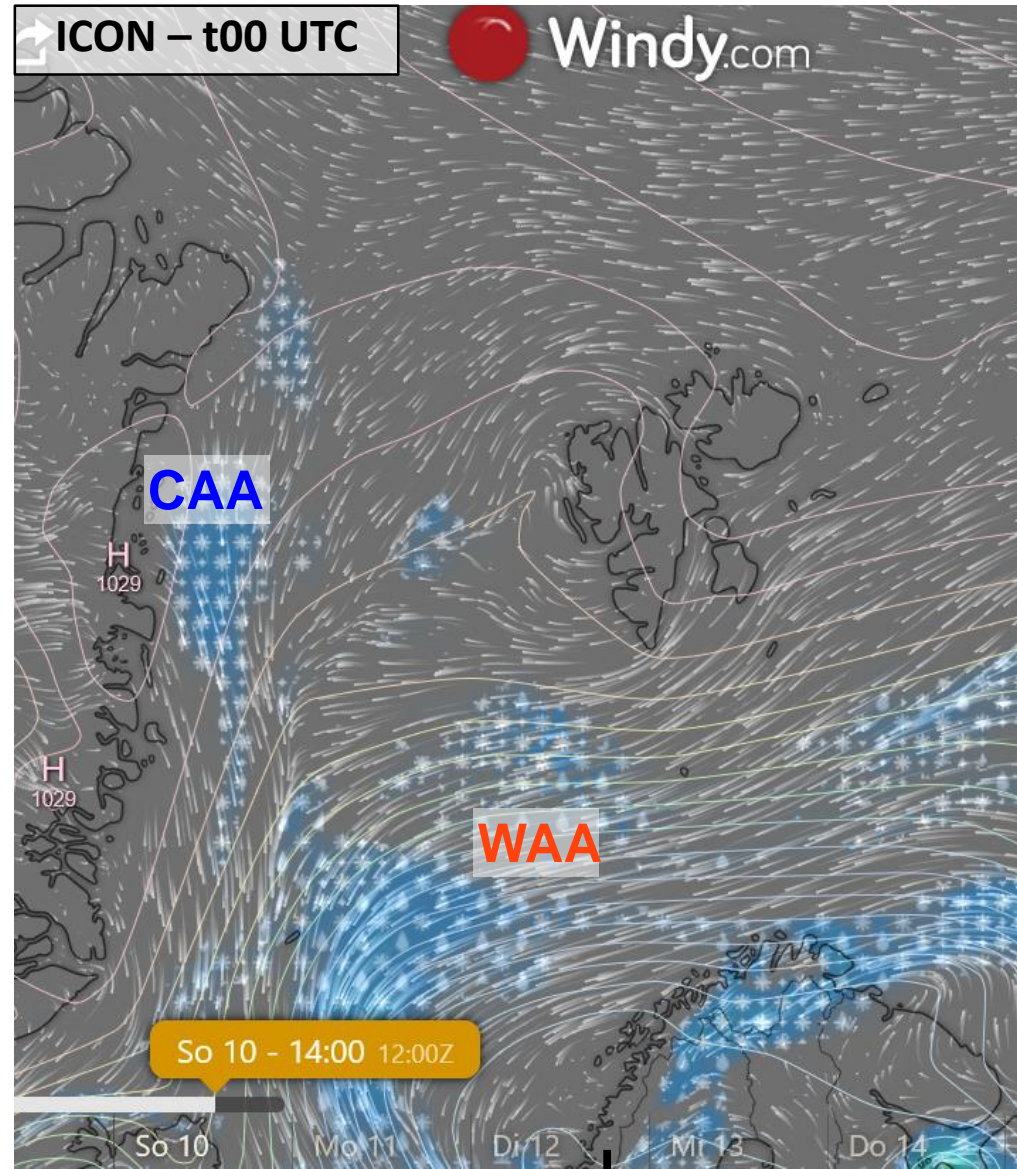


Sunday, 2022-04-10 12 UTC

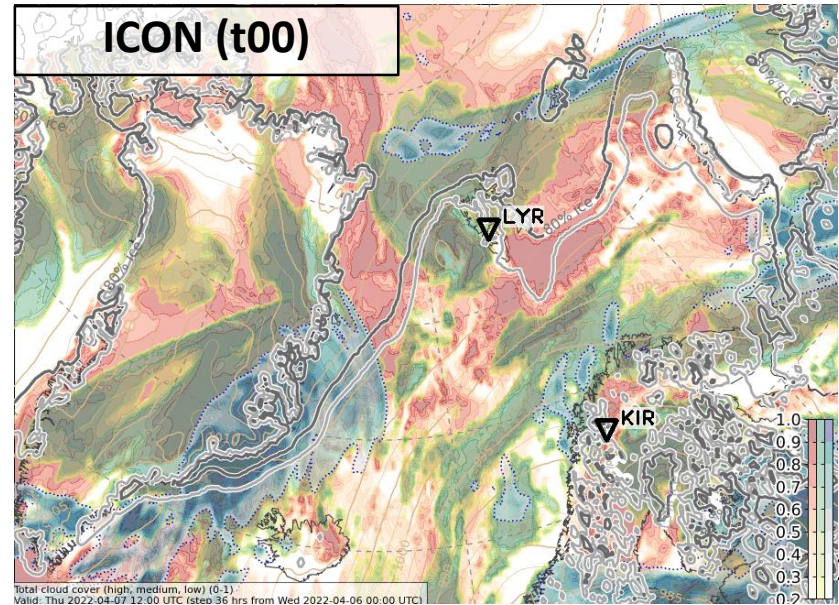
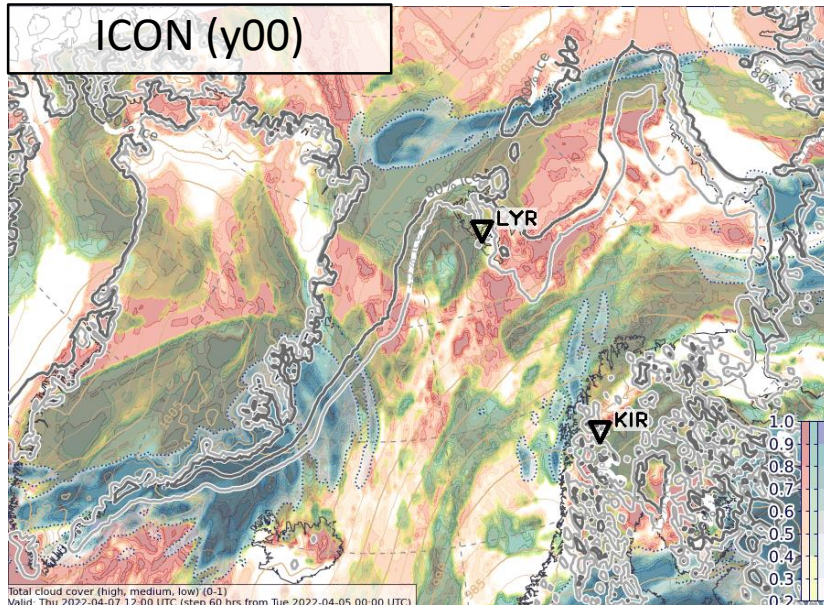
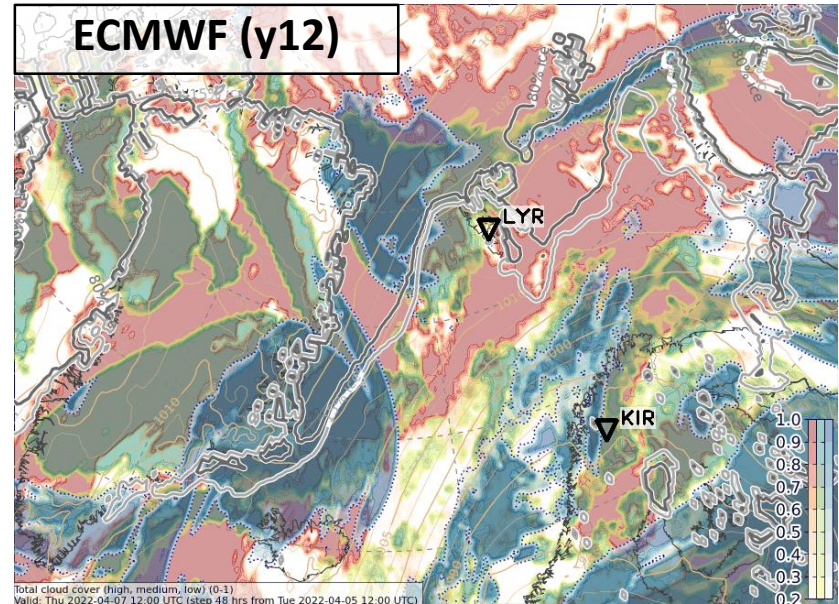
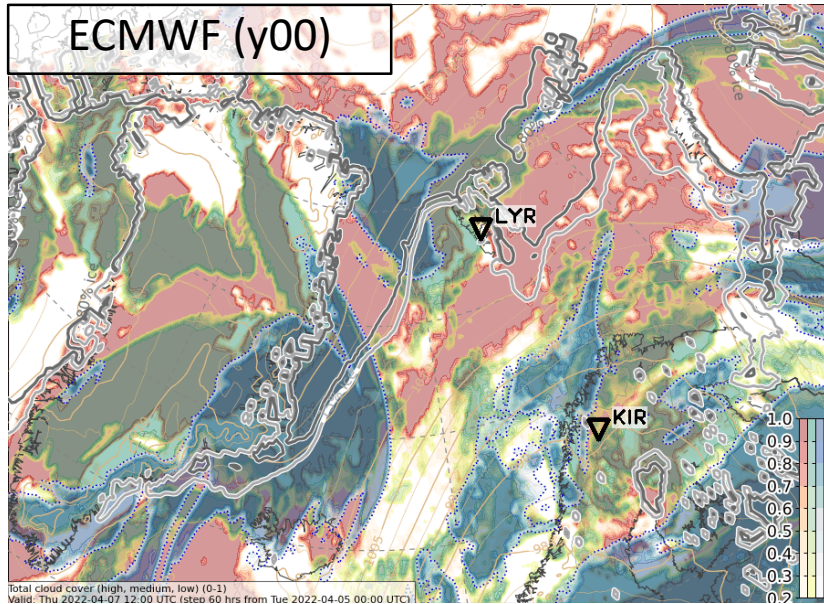


Sunday, 2022-04-10 12 UTC

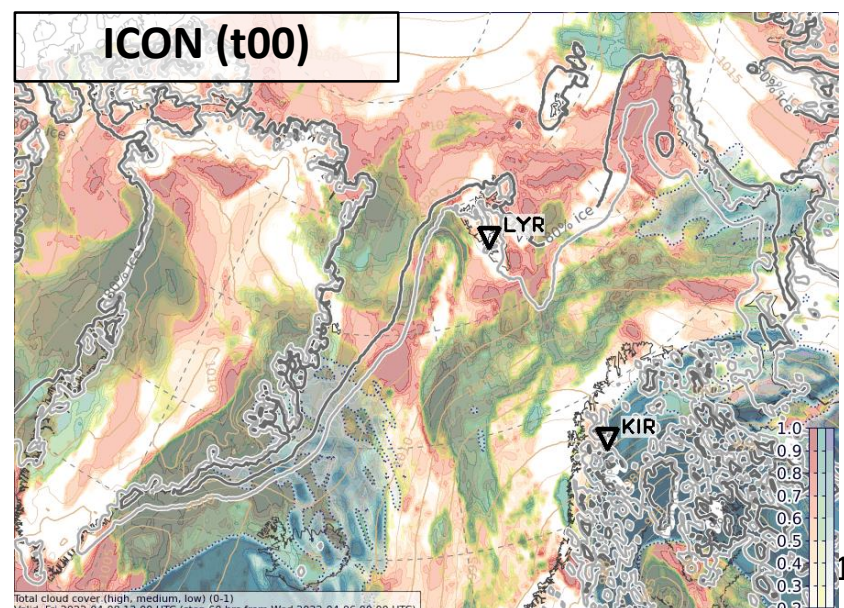
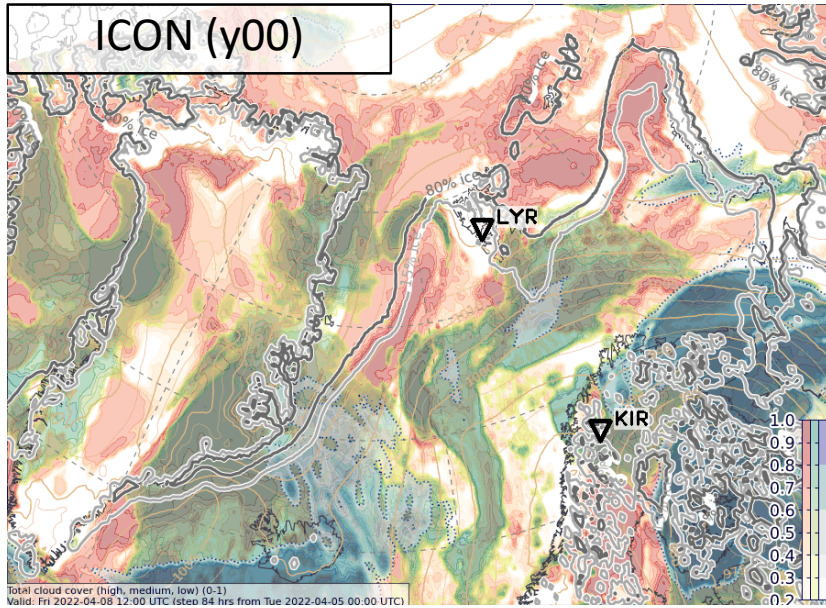
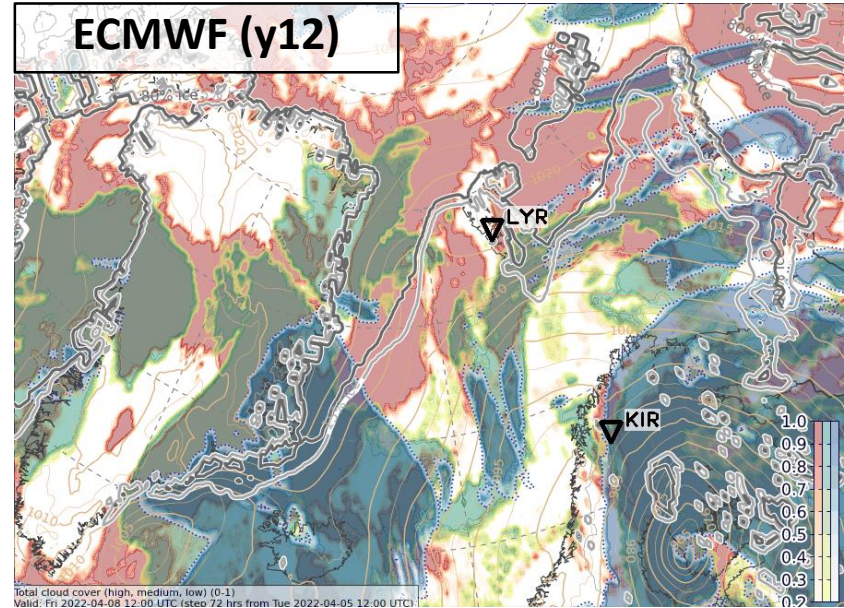
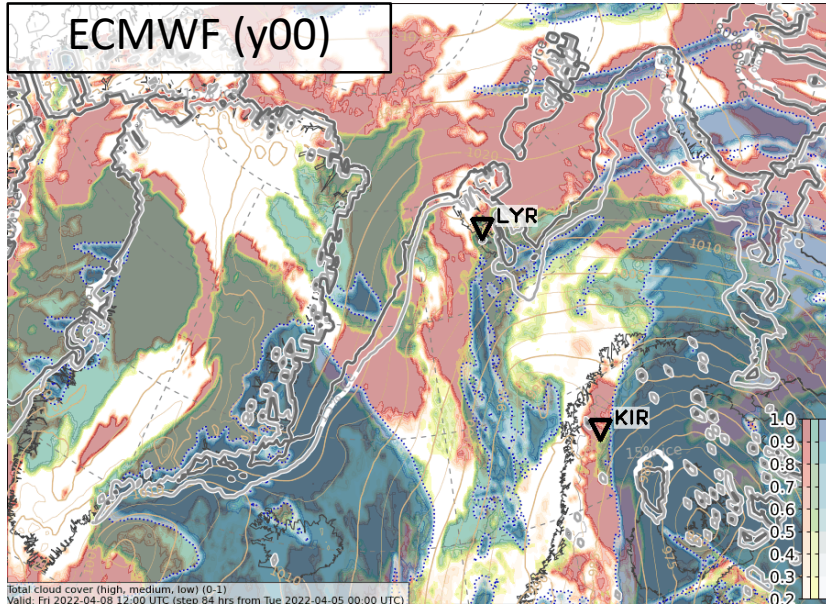
ICON – y00 UTC



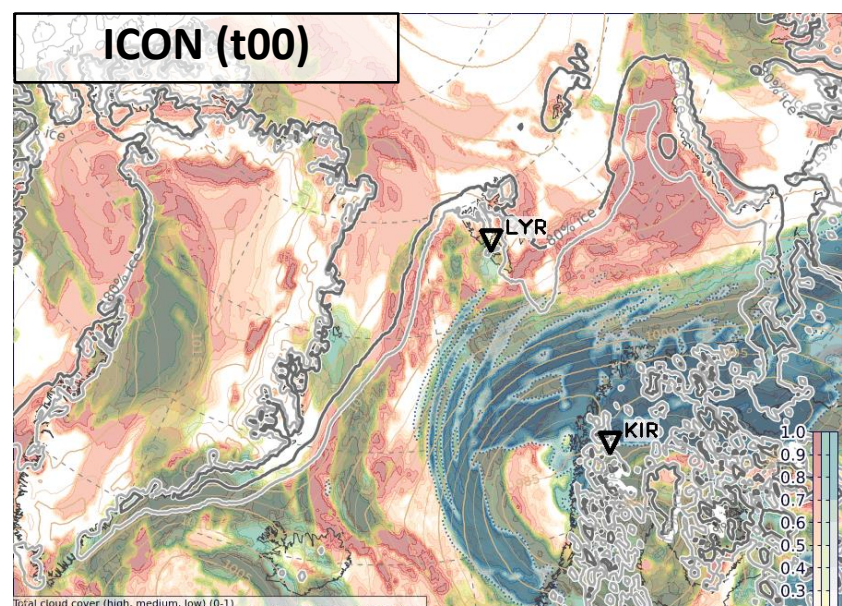
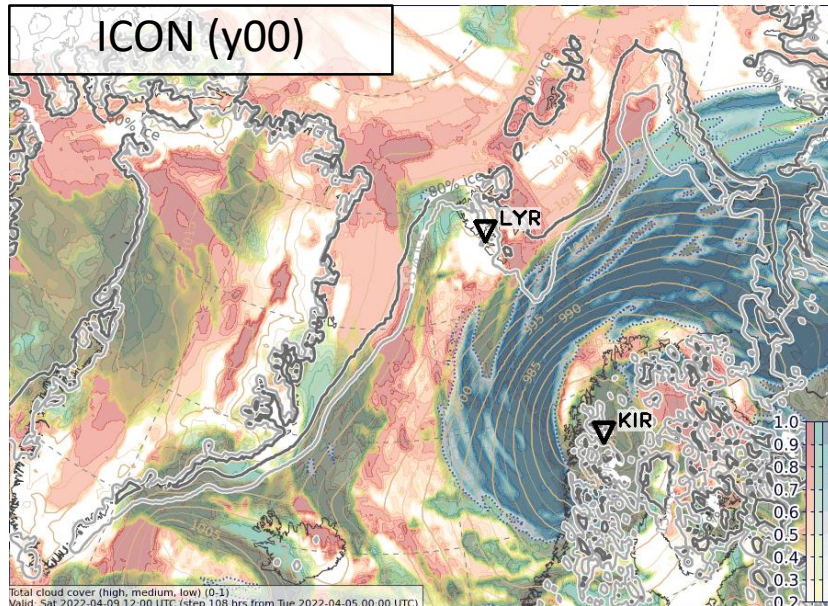
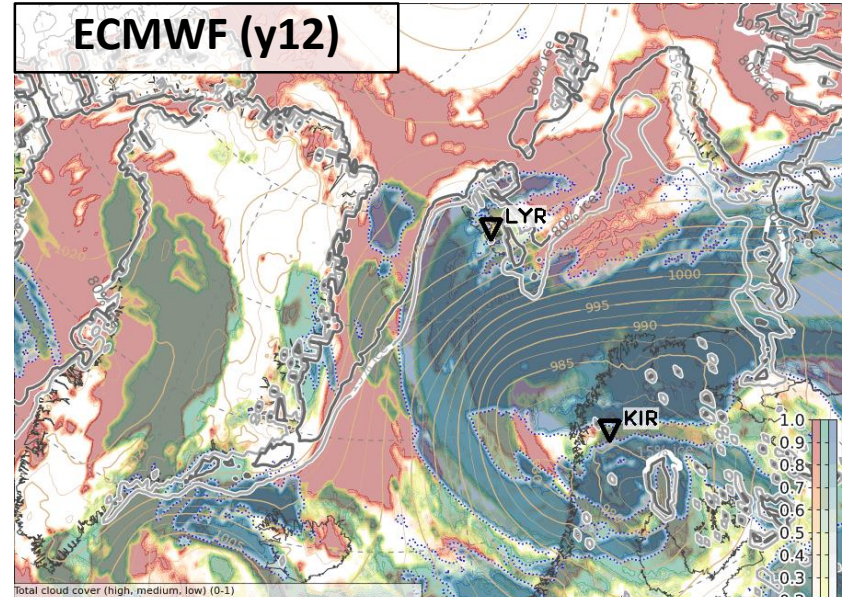
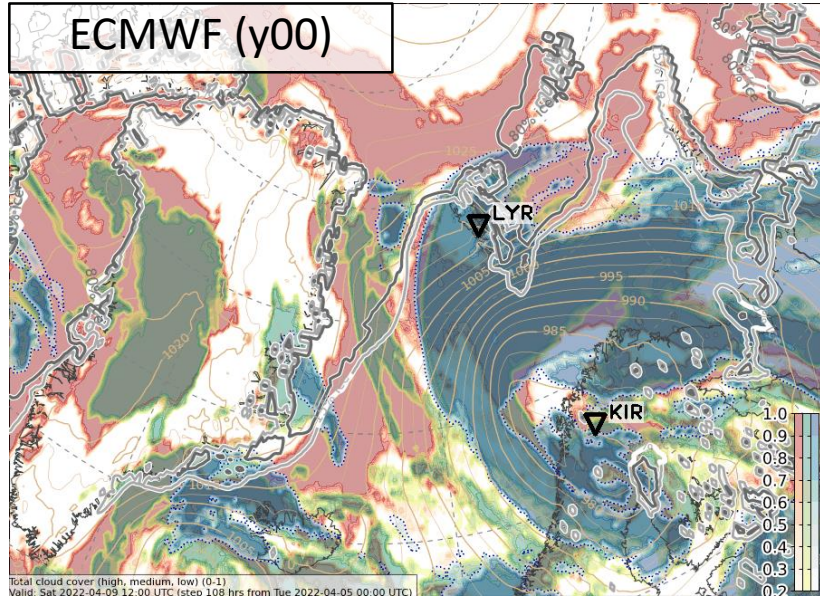
Thu, Total Cloud Cover, 2022-04-07 12 UTC



Fri, Total Cloud Cover, 2022-04-08 12 UTC



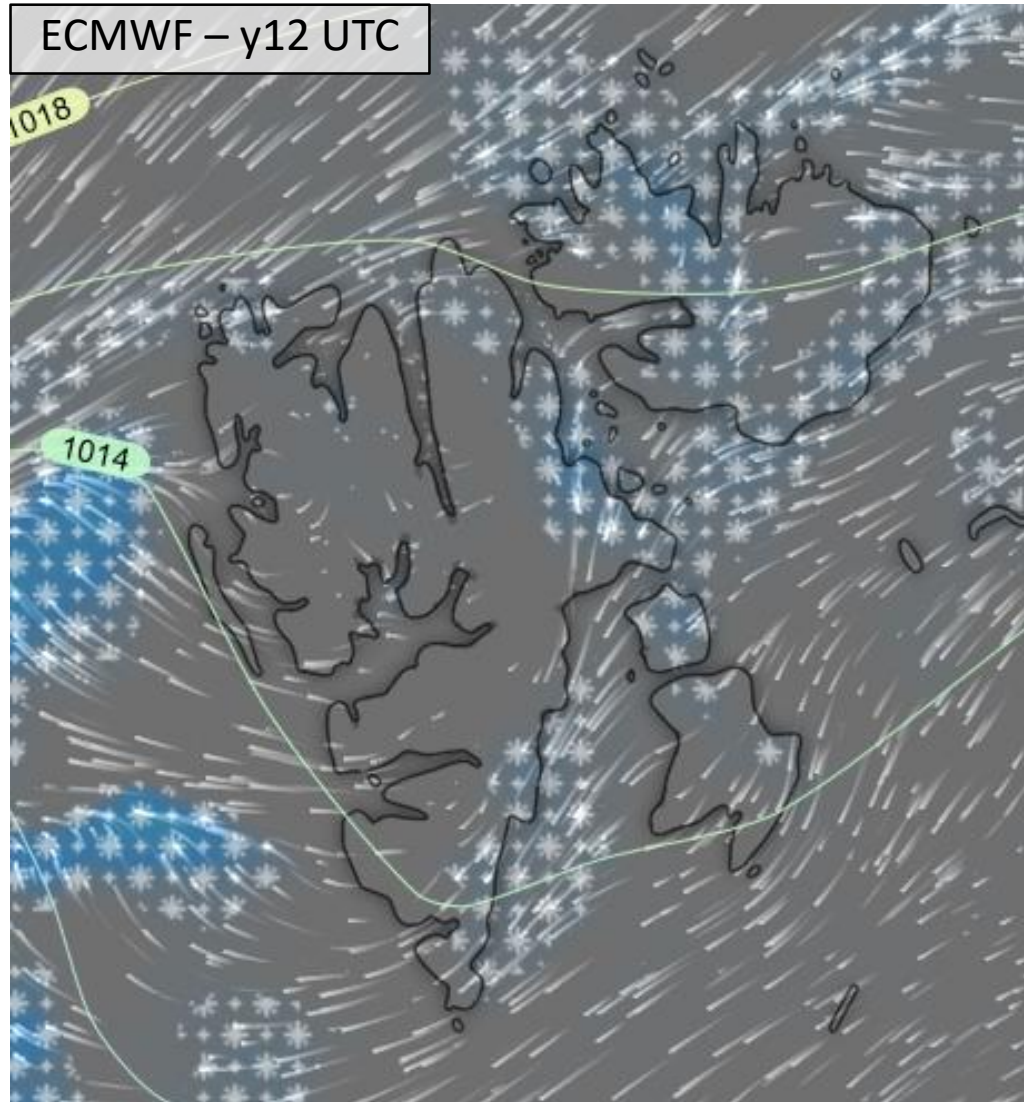
Sat, Total Cloud Cover, 2022-04-09 12 UTC



Airport meteograms & local weather at Svalbard

Thu, 2022-04-07 12 UTC: Precipitation

ECMWF – y12 UTC

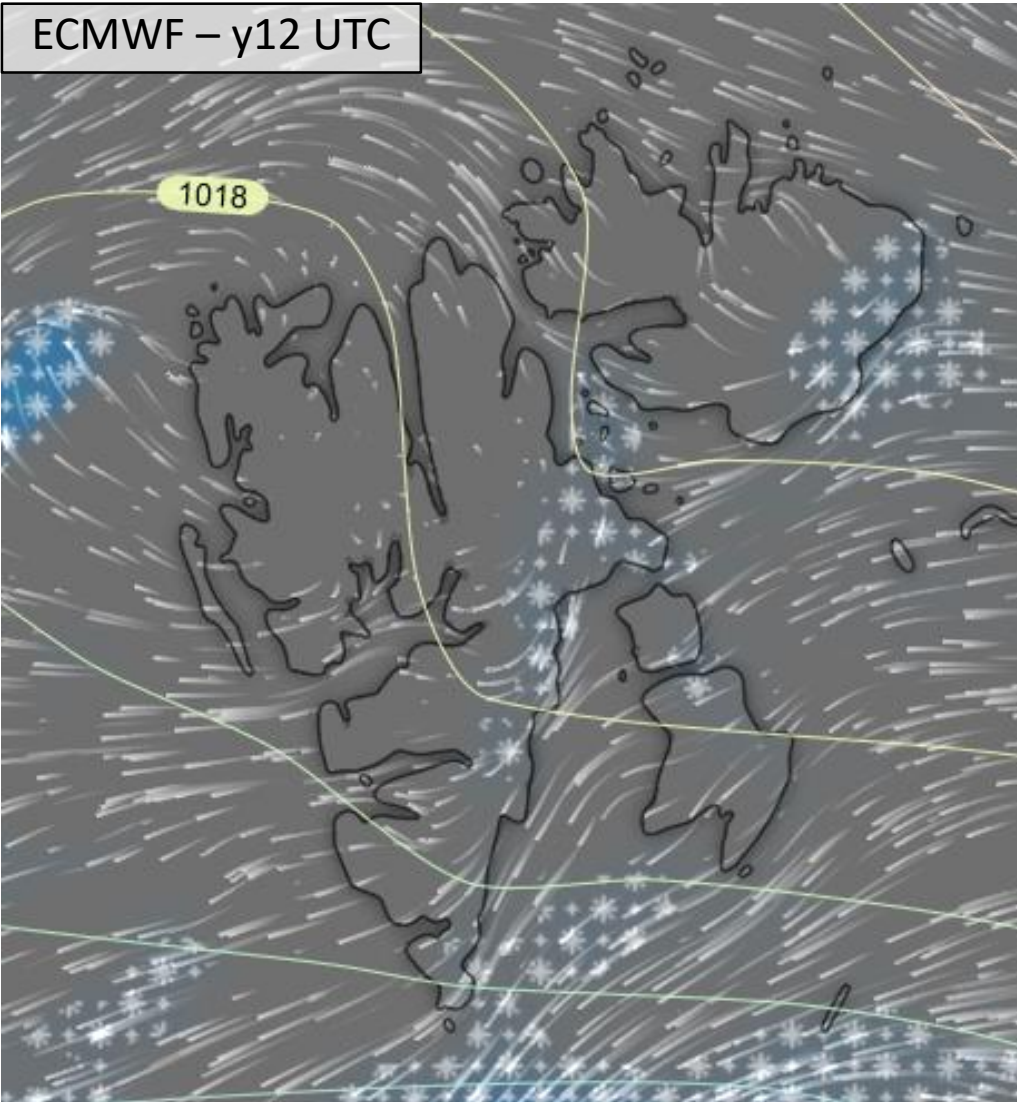


ICON – t00 UTC



Fri, 2022-04-08 12 UTC: Precipitation

ECMWF – y12 UTC

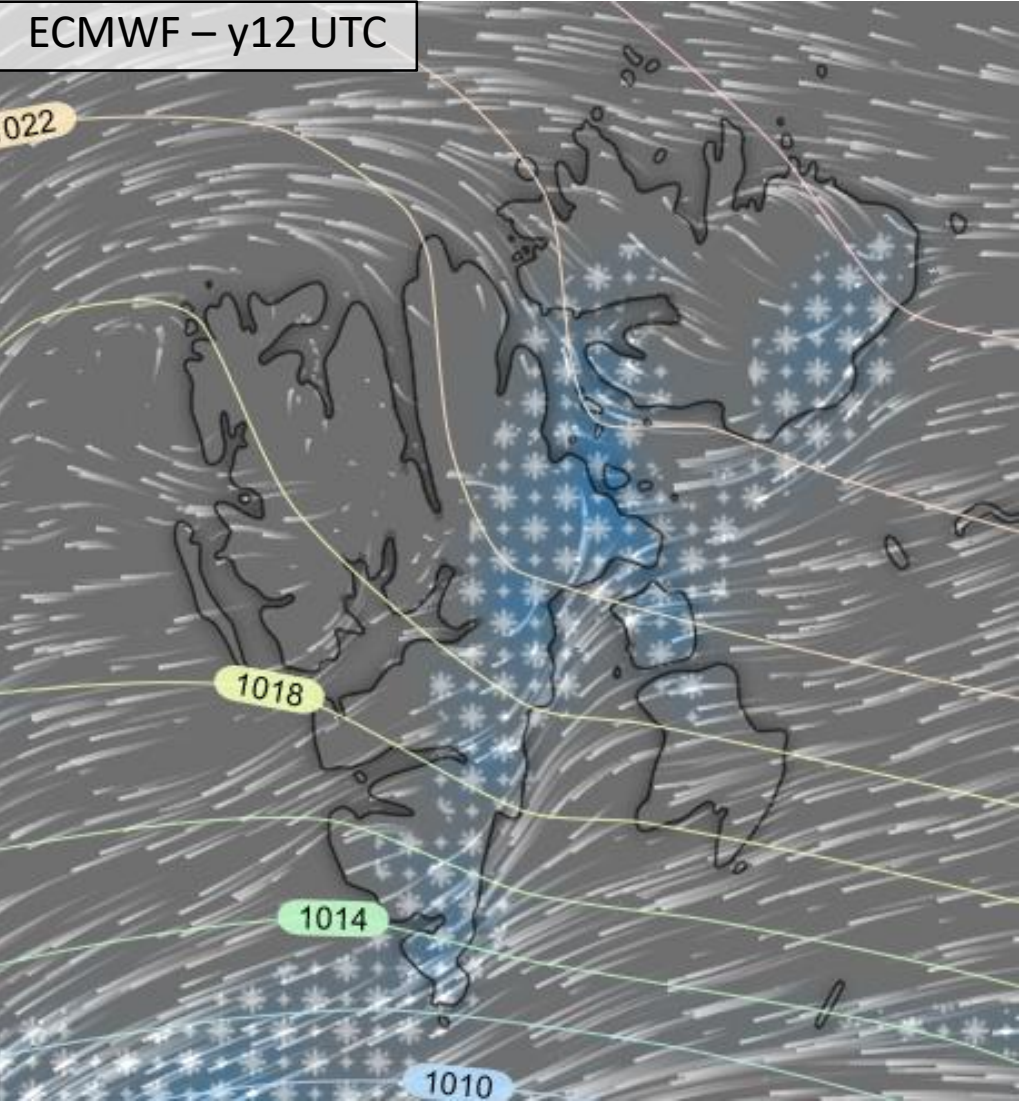


ICON – t00 UTC

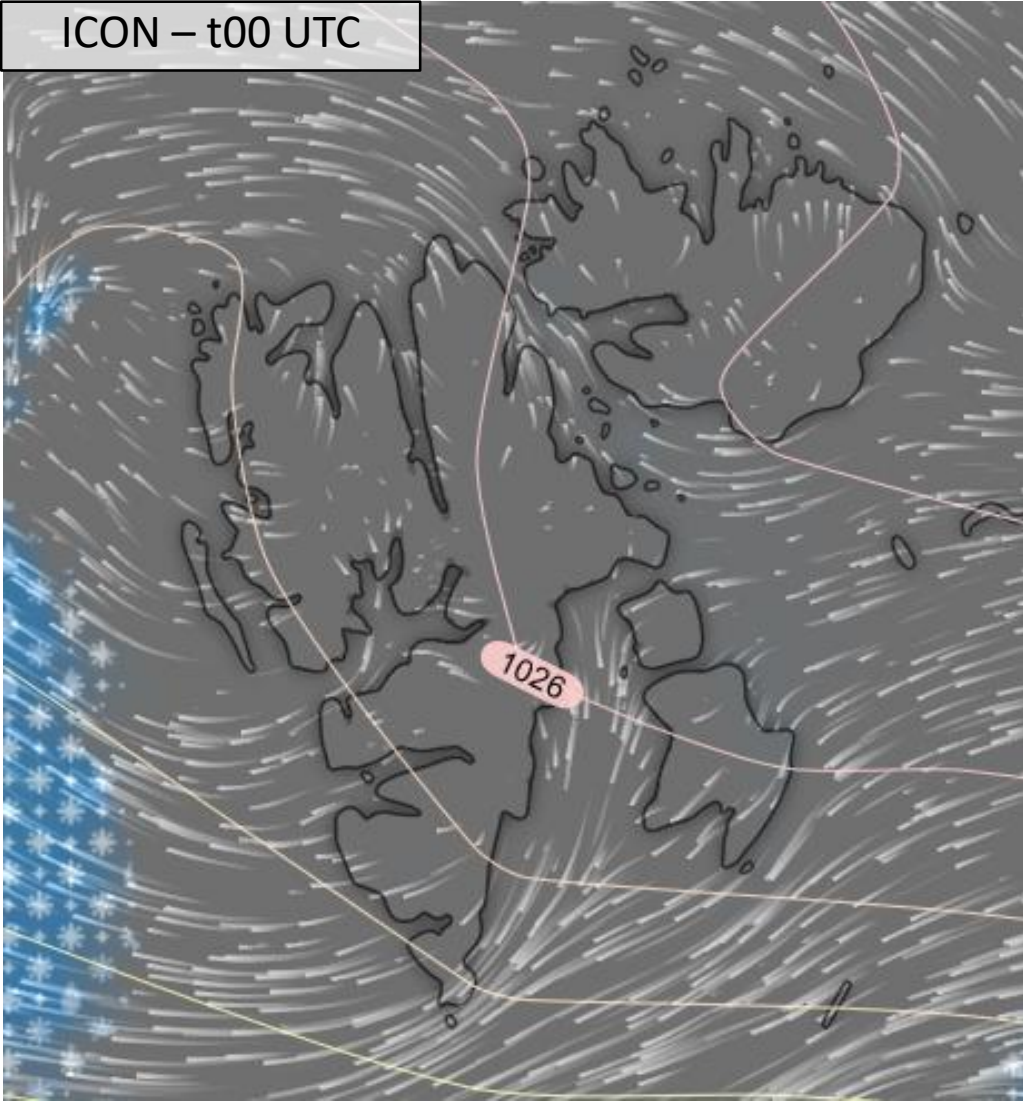


Sat, 2022-04-09 12 UTC: Precipitation

ECMWF – y12 UTC

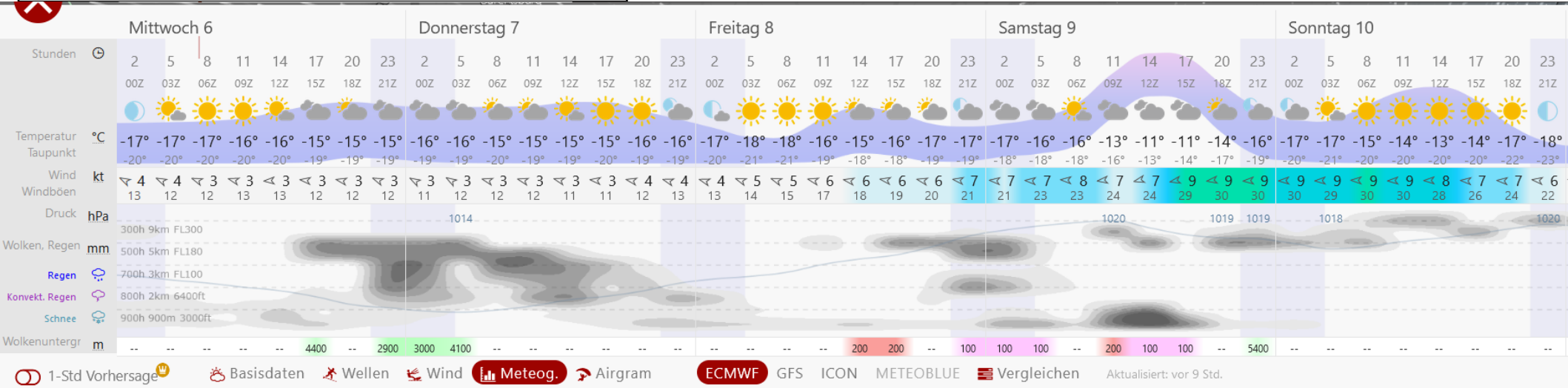


ICON – t00 UTC

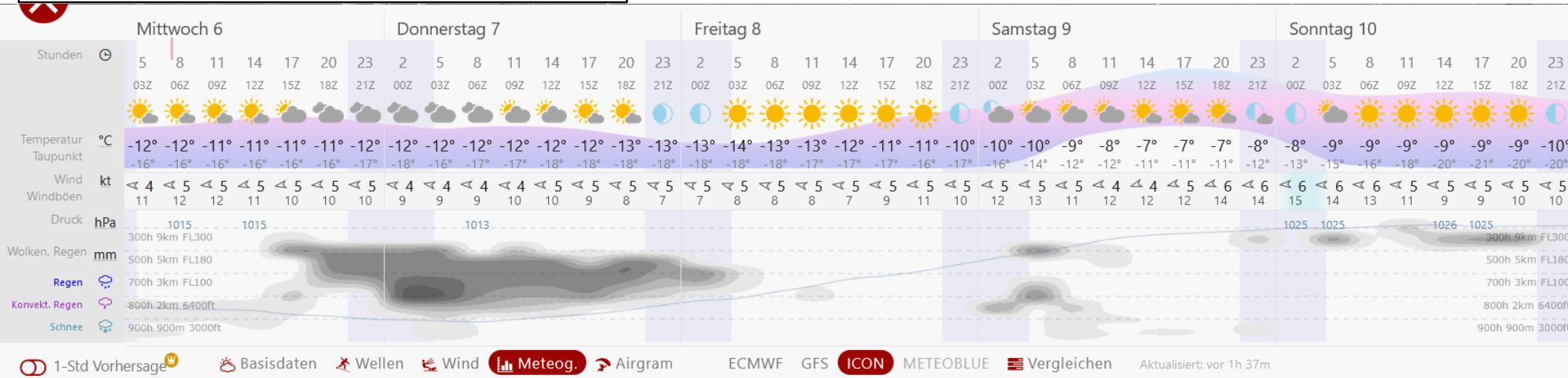


Longyearbyen:

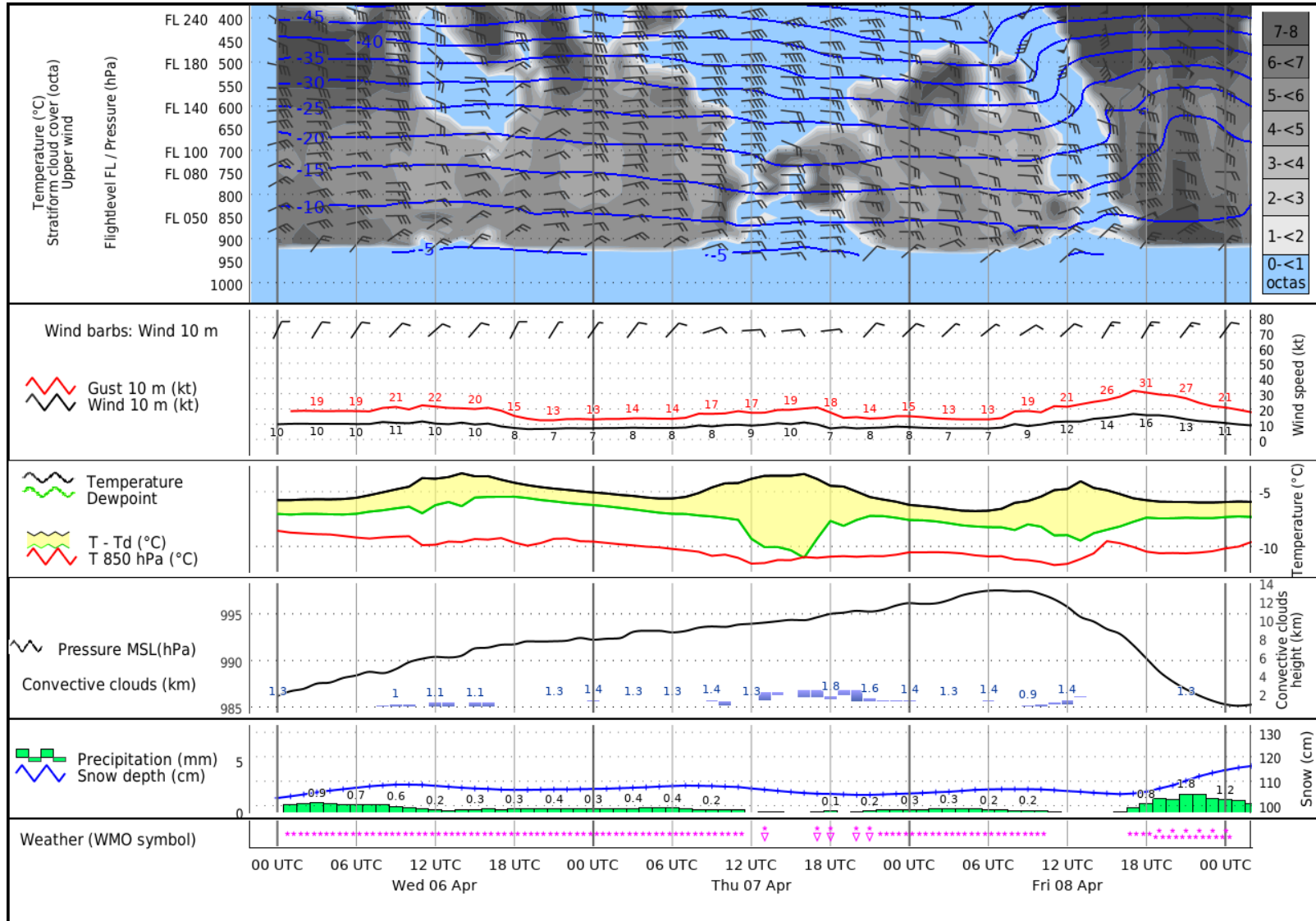
ECWMF



ICON



Kiruna:



Meteorgram Kiruna (ESNQ), 460 m, LAT/LON: N 67°49' E 20°20'

ICON-EU 2022-04-06 00 UTC, model height: 460 m

Summary

- **Thursday, 2022-04-07:**
 - Polar Low West of Svalbard seen by both ICON and ECMWF
 - Cirrus field West of Svalbard
 - CAA in western Fram Strait
- **Friday, 2022-04-08:**
 - Development of Polar Low uncertain between old and new runs
 - Arrival of warmer air from Scandinavian Low system
 - CAA in western Fram Strait
 - Convergence line over Fram Strait
- **Saturday, 2022-04-09:**
 - Warm air from Scandinavian Low system reaches Fram Strait and Svalbard