

Weather update HALO-(AC)³

Wednesday, 2022-04-04, 09:00 LT

Surface wind development and precipitation

2022-04-03 12 UTC: 24 – 96h

ECMWF

2022-04-04 00 UTC: 12 – 84h

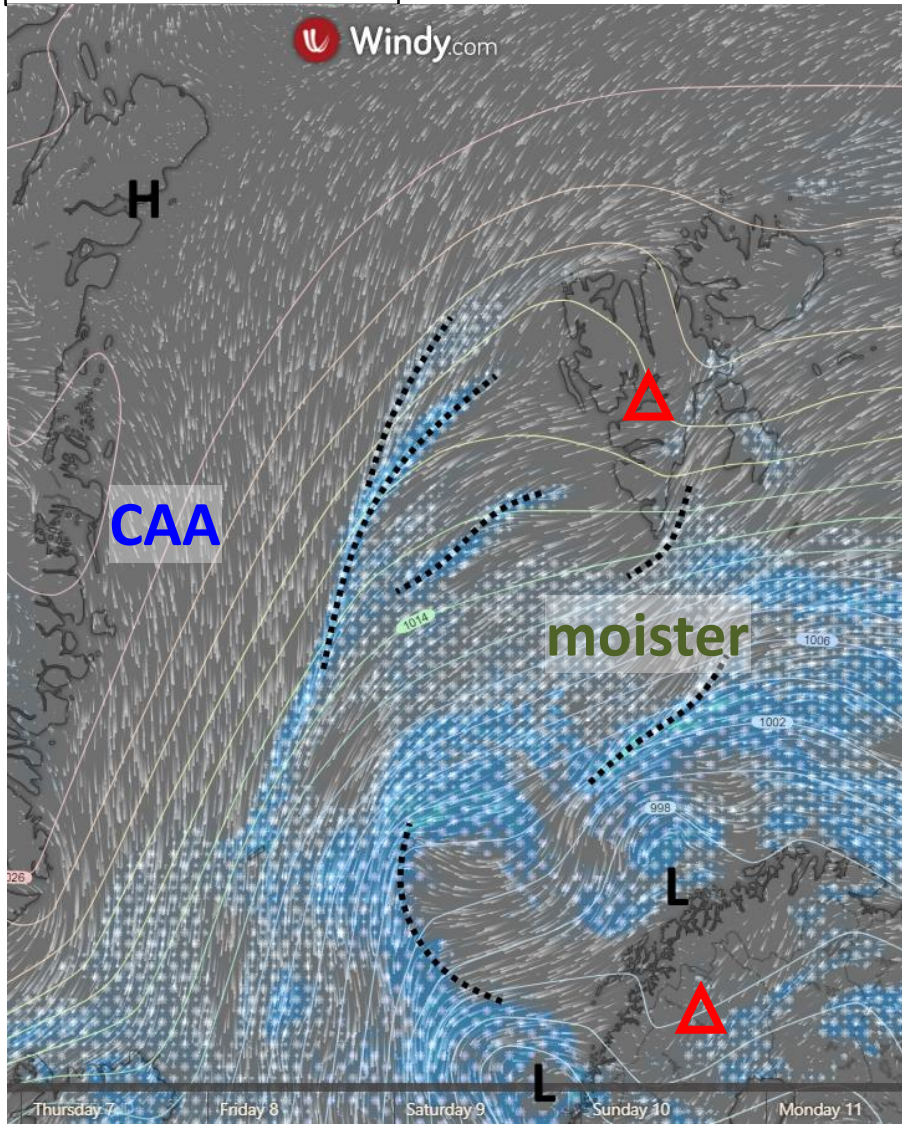
ICON

CAA: Cold Air Advection

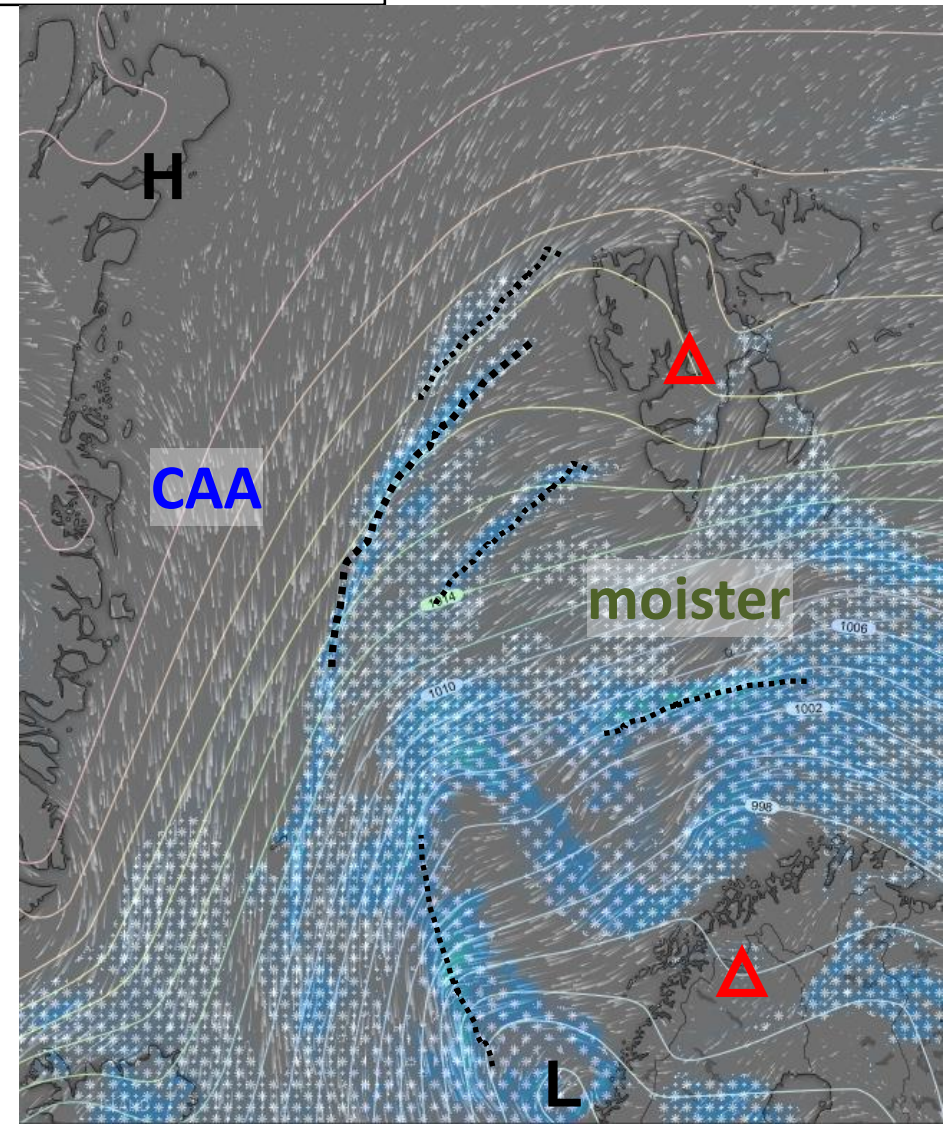
WAA: Warm Air Advection

Monday, 2022-04-04 12 UTC

ECMWF - 00 UTC

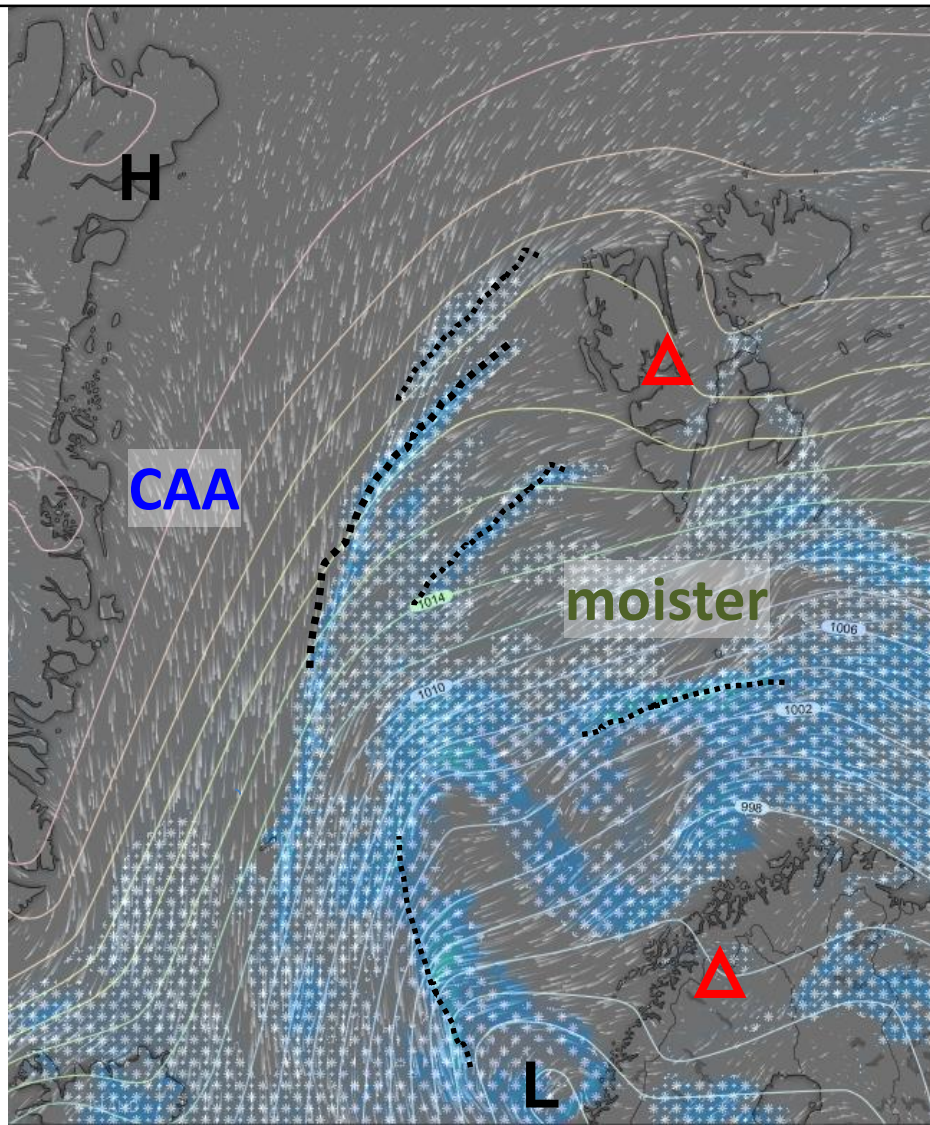


ECMWF - 12 UTC

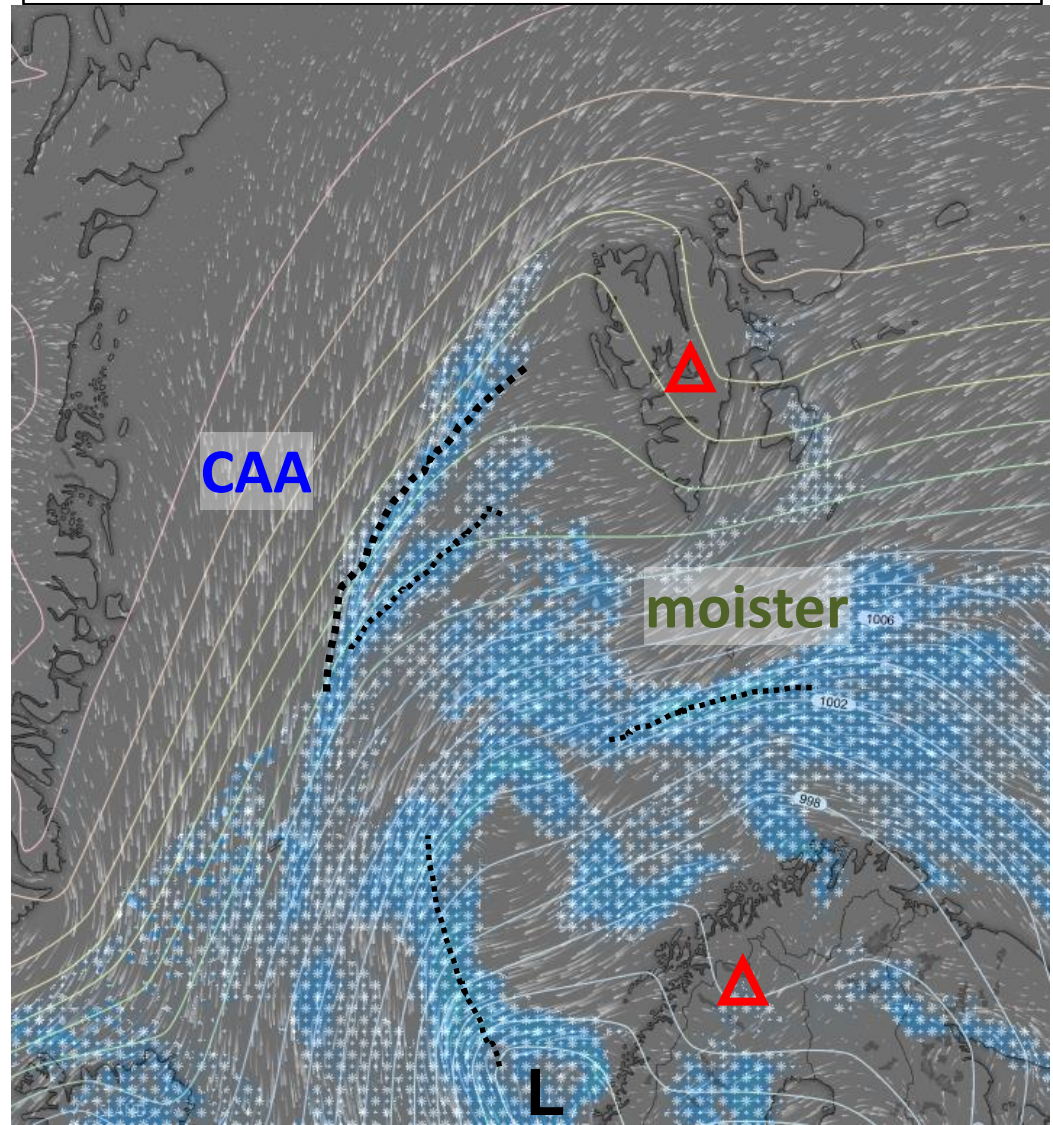


Monday, 2022-04-04 12 UTC

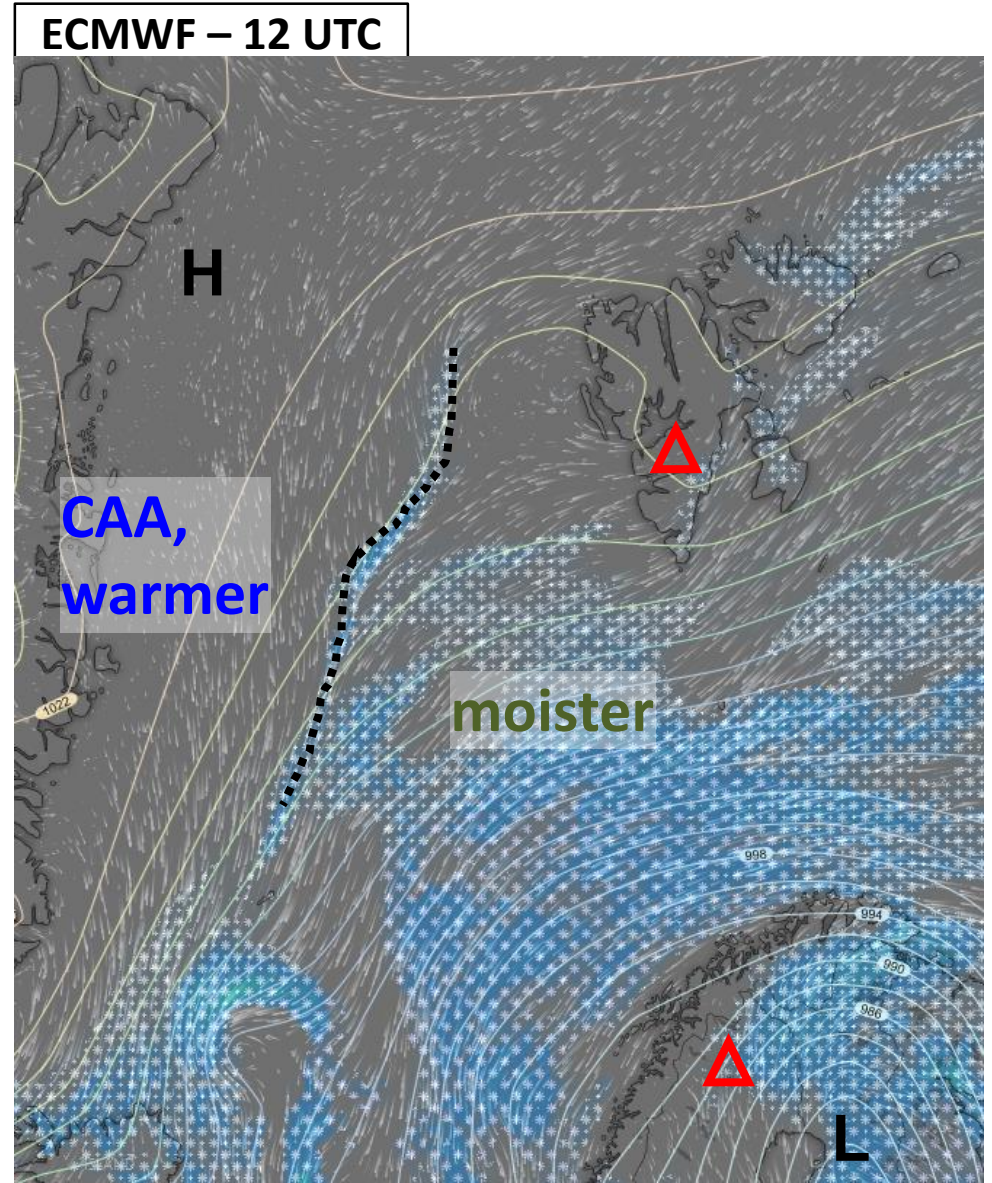
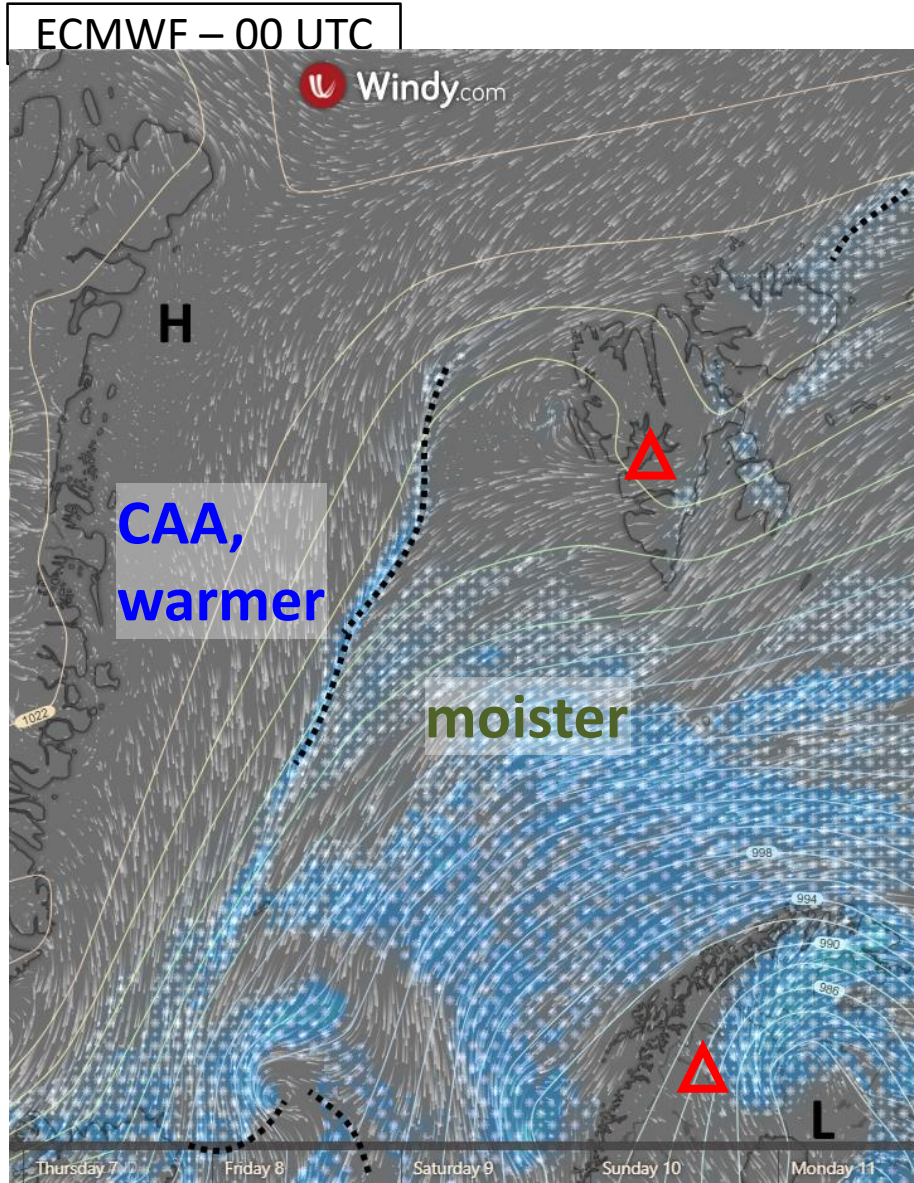
ECMWF (22-04-03 12 UTC)



ICON (22-04-04 00 UTC)

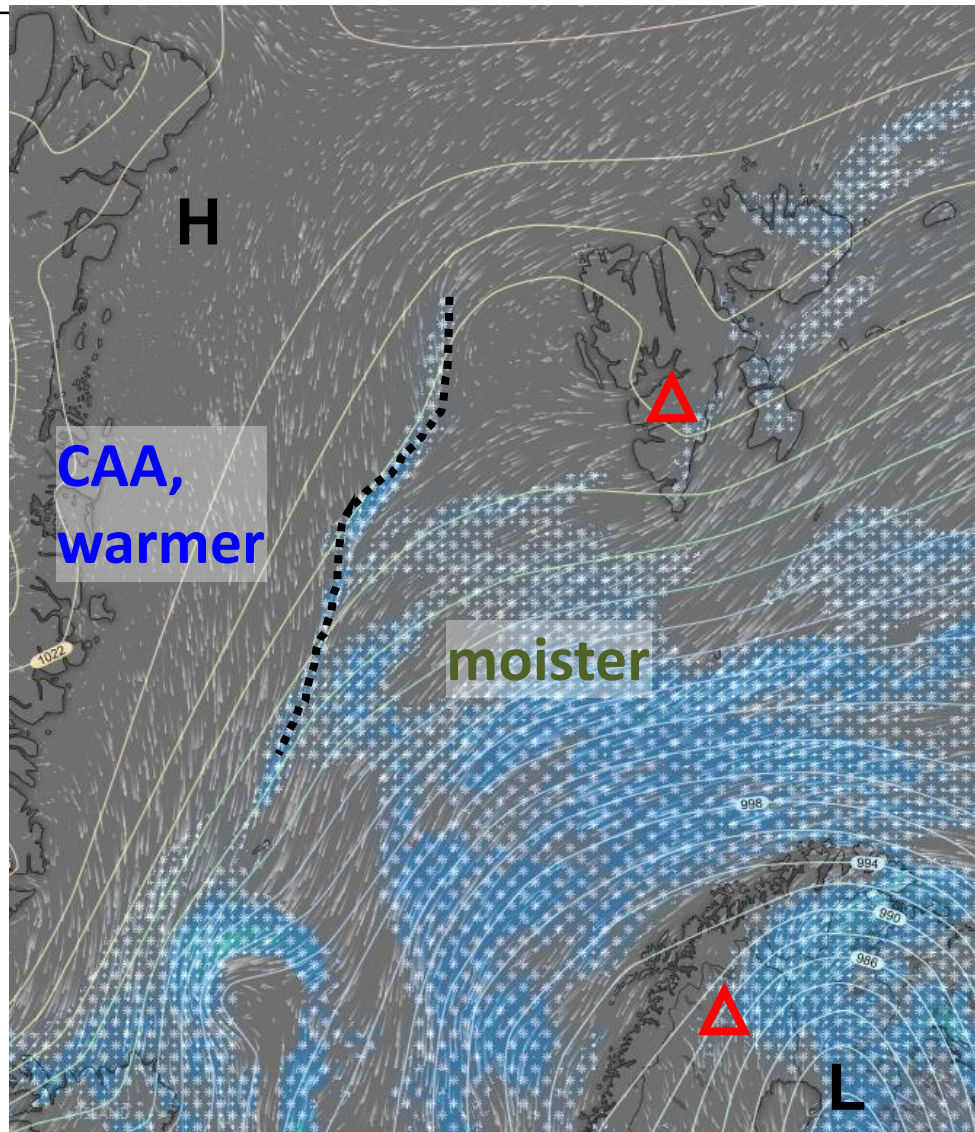


Tuesday, 2022-04-05 12 UTC

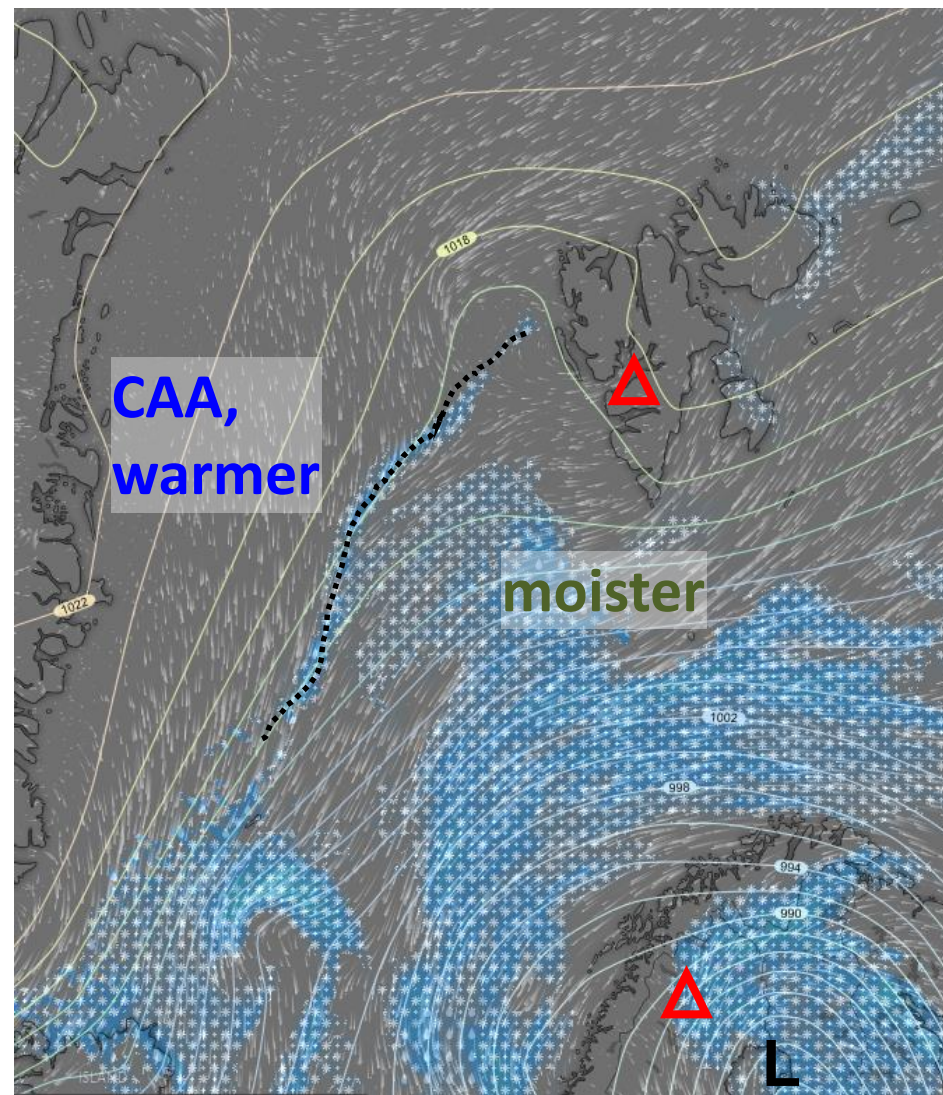


Tuesday, 2022-04-05 12 UTC

ECMWF



ICON

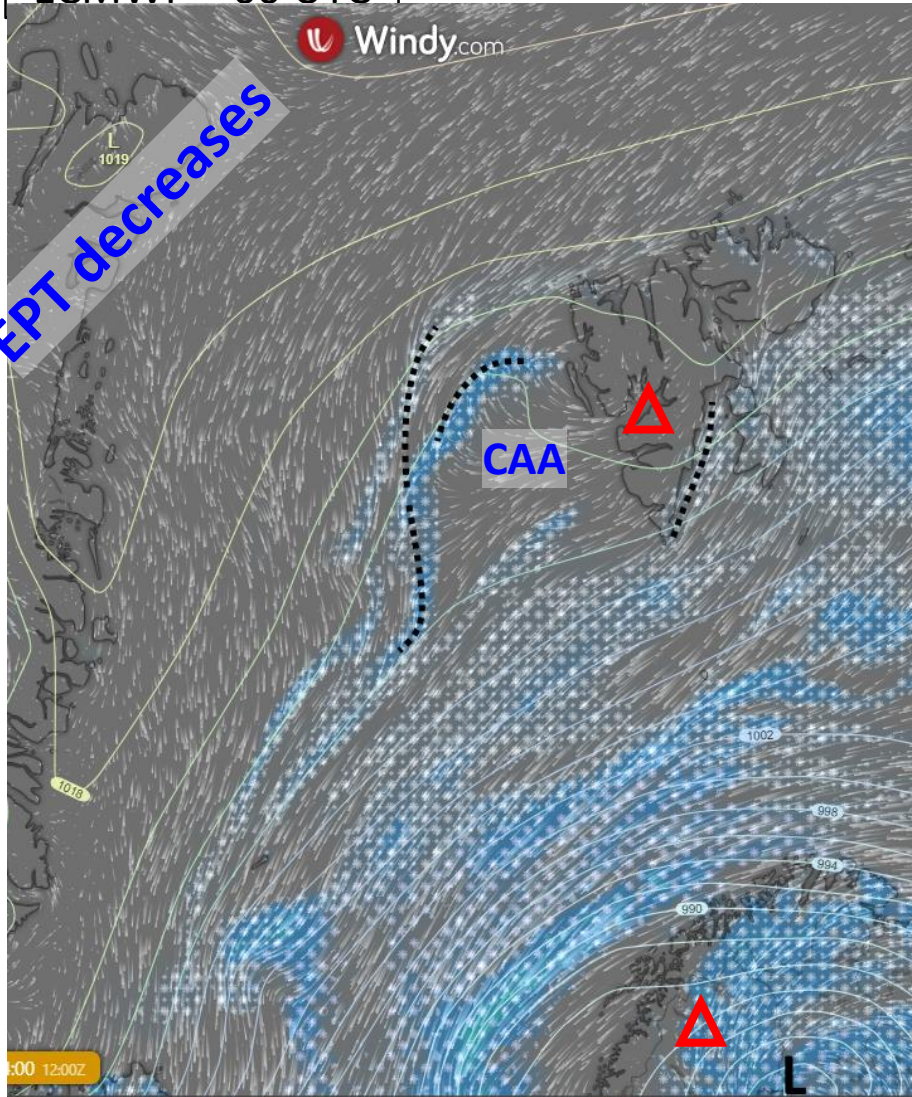


Wednesday, 2022-04-06 12 UTC

ECMWF - 00 UTC

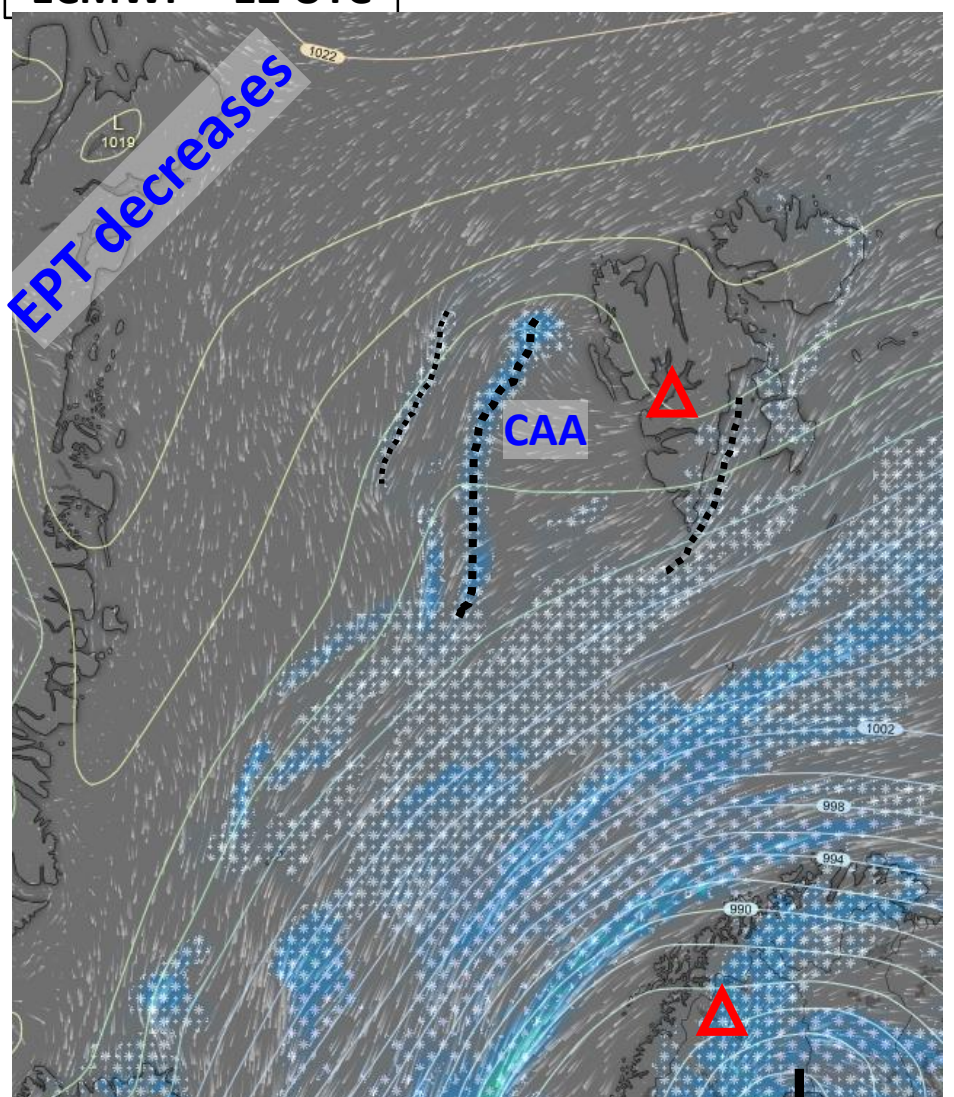


EPT decreases



ECMWF - 12 UTC

EPT decreases

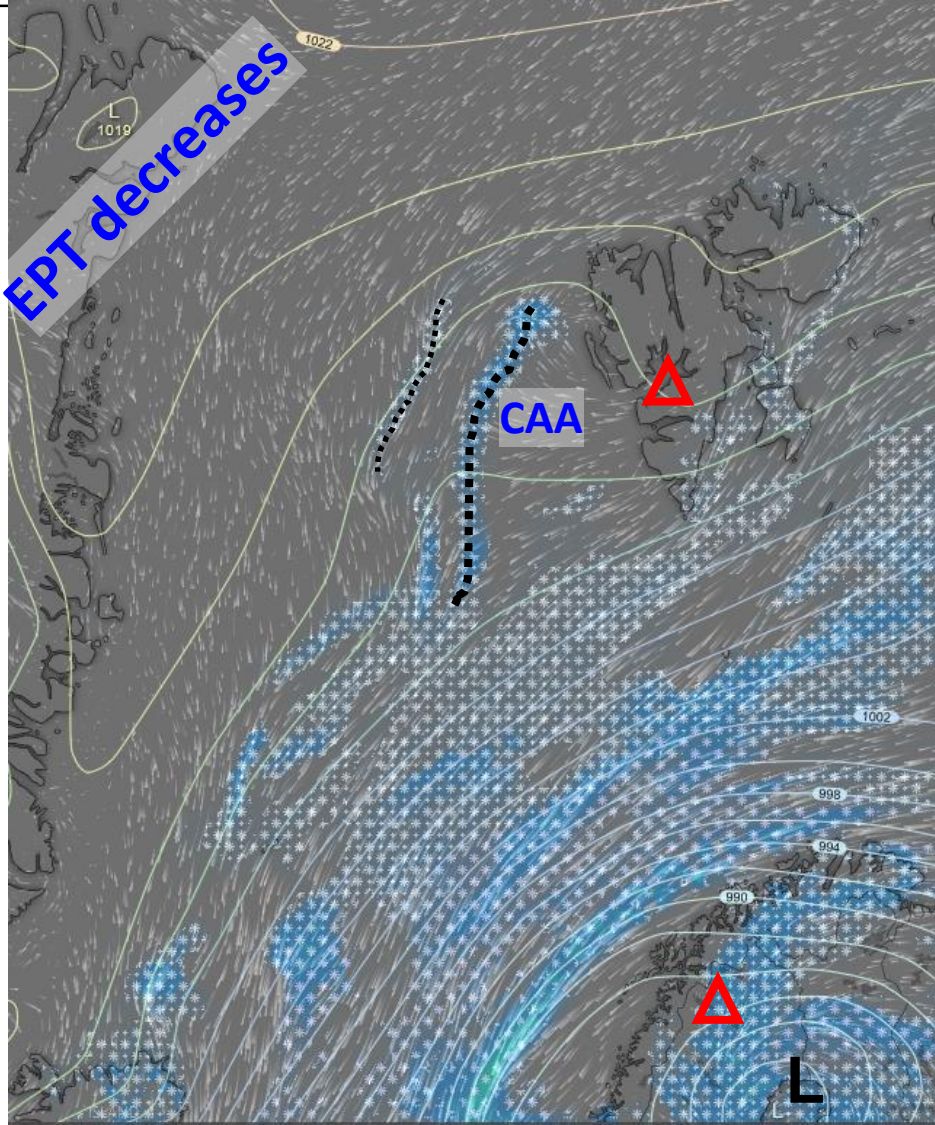


Thursday 7 Friday 8 Saturday 9 Sunday 10 Monday 11

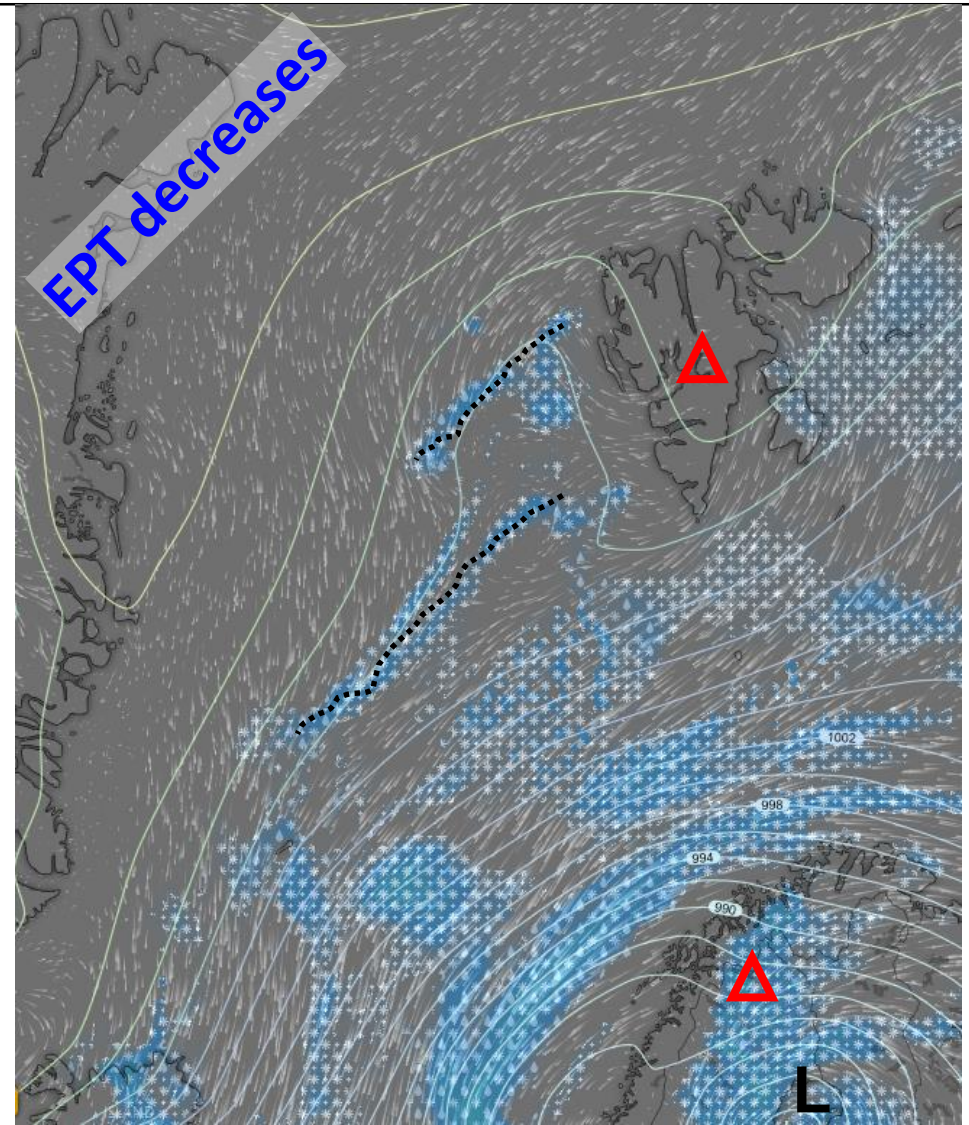
Thursday 7 Friday 8 Saturday 9 Sunday 10 Monday 11

Wednesday, 2022-04-06 12 UTC

ECMWF



ICON

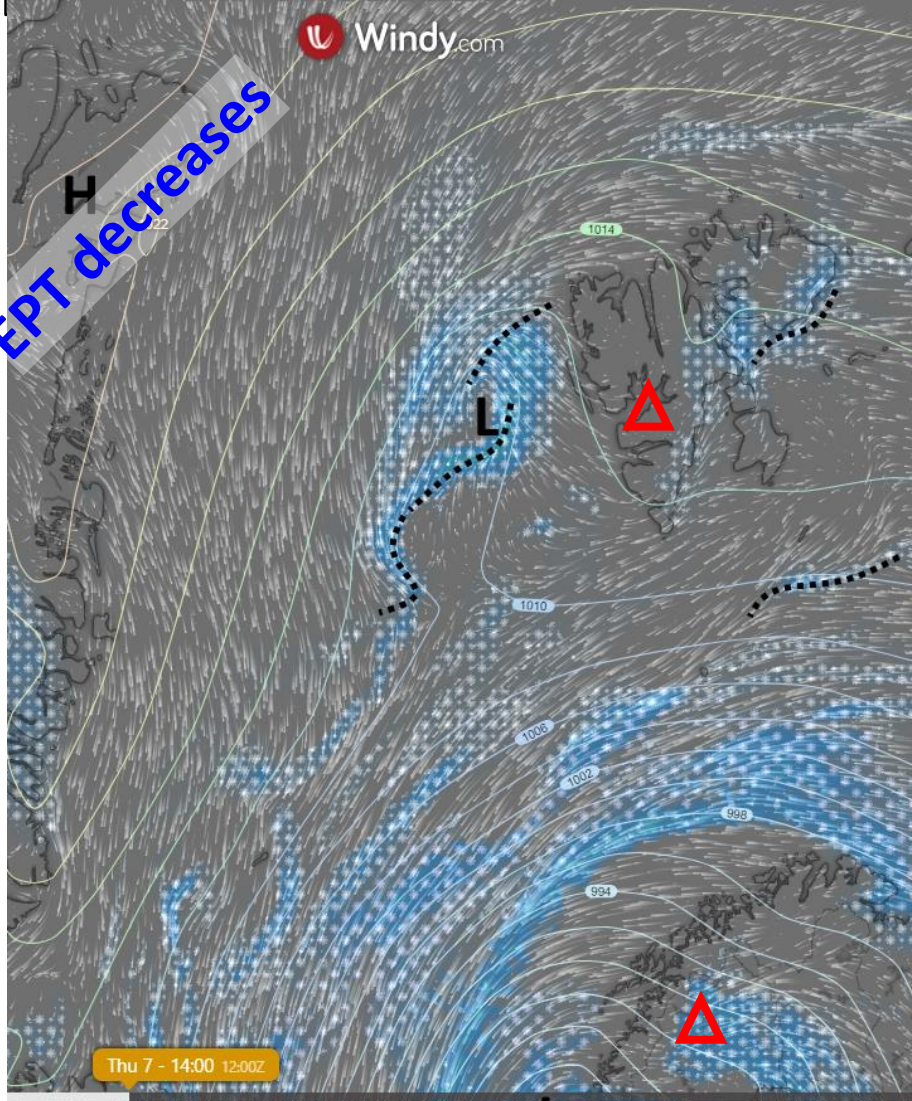


Thursday, 2022-04-07 12 UTC

ECMWF - 00 UTC

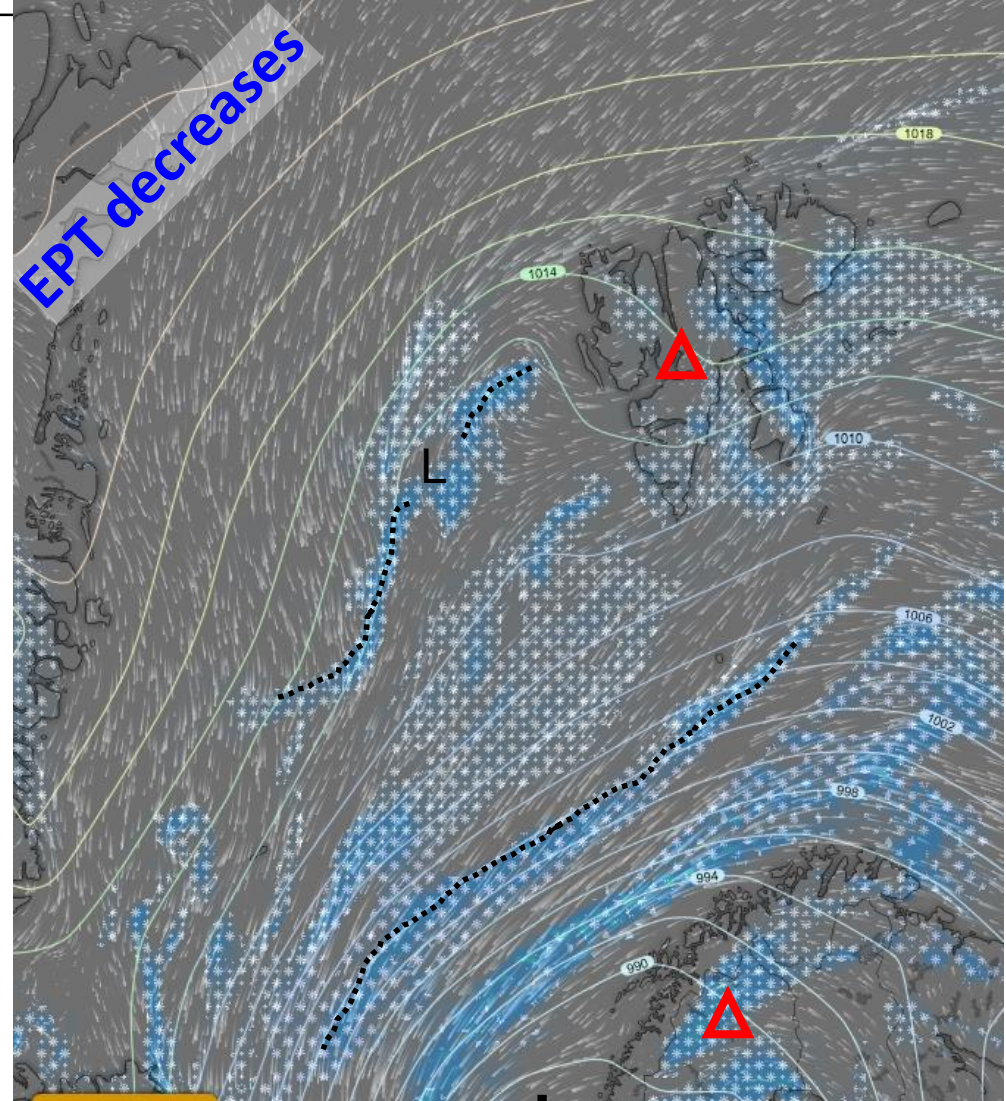


EPT decreases



ECMWF - 12 UTC

EPT decreases



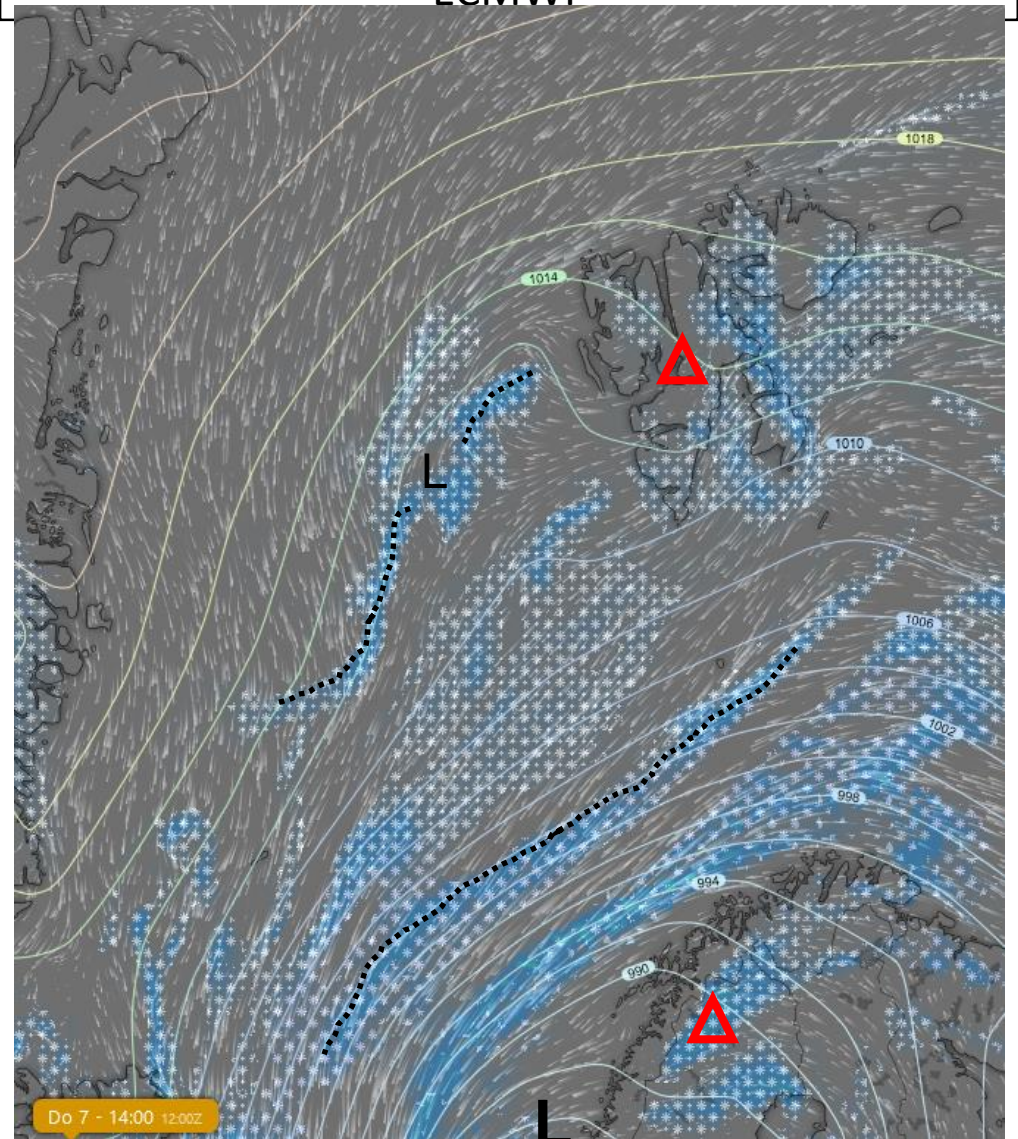
Thu 7 - 14:00 12:00Z

Thursday 7th Friday 8th Saturday 9th Sunday 10th Monday 11th

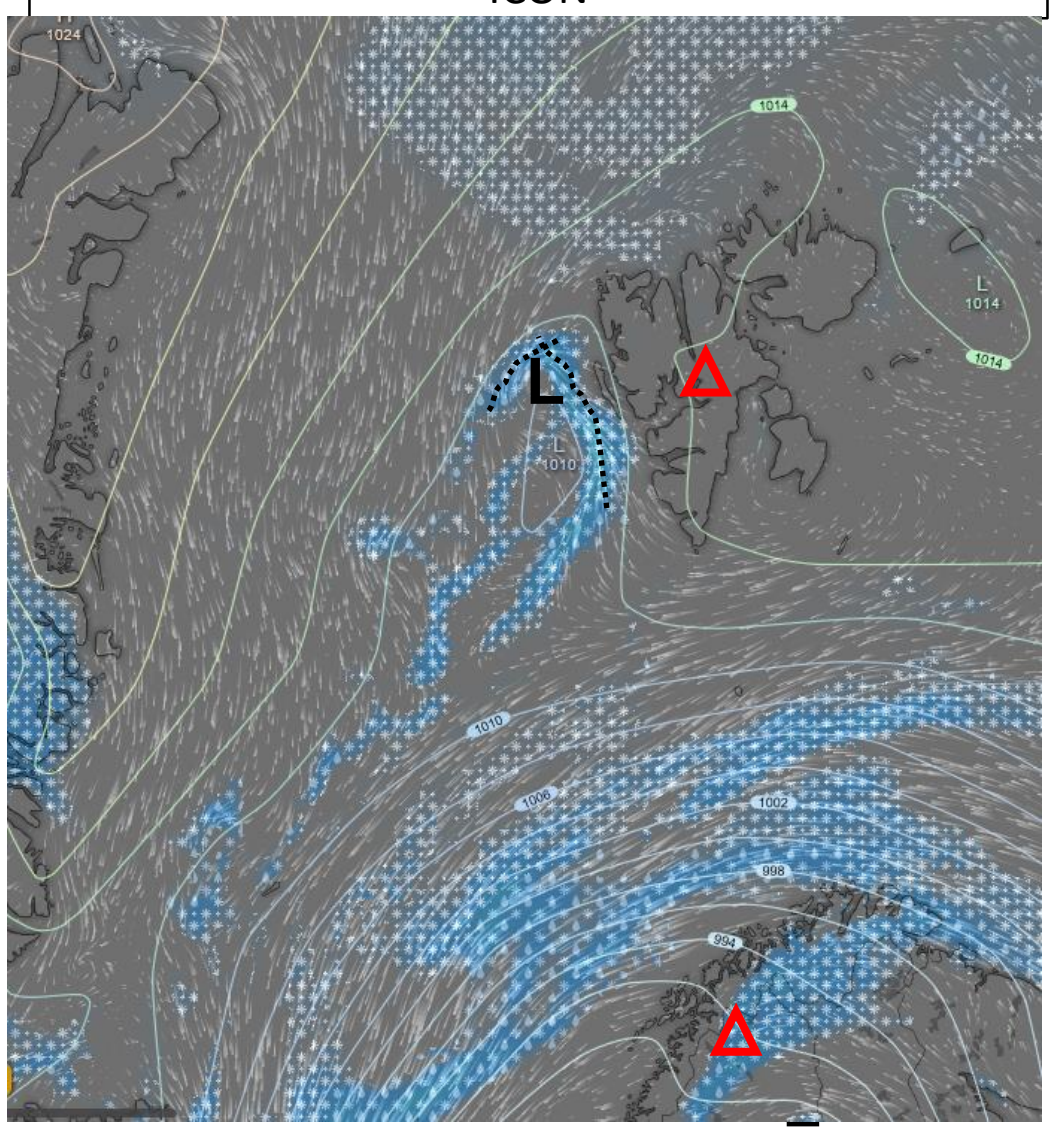
Do 7 - 14:00 12:00Z

Thursday, 2022-04-07 12 UTC

ECMWF



ICON



Forecast comparison yesterday 00 UTC and 12 UTC

Forecast comparison (TCC, Theta850hPa)

2022-04-03 00 UTC

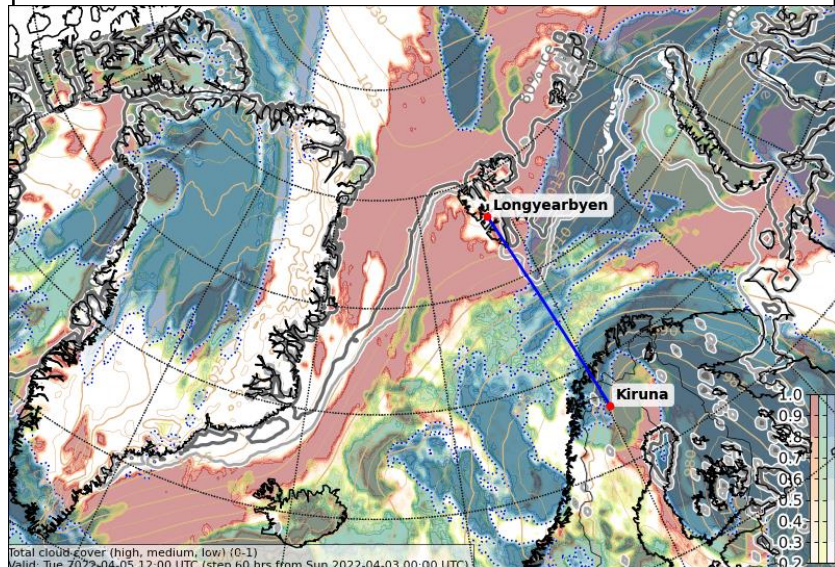
ECMWF

2022-04-03 12 UTC

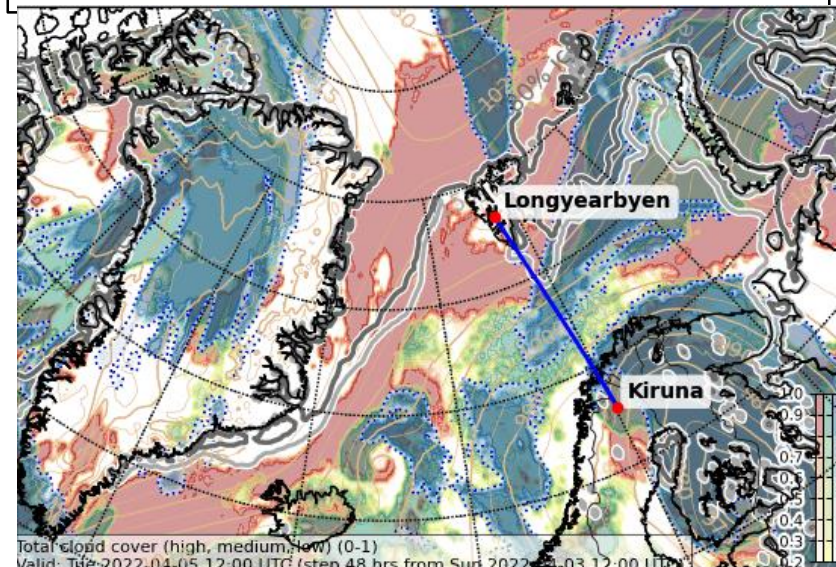
ECMWF

Tuesday, 2022-04-05 12 UTC (+84h)

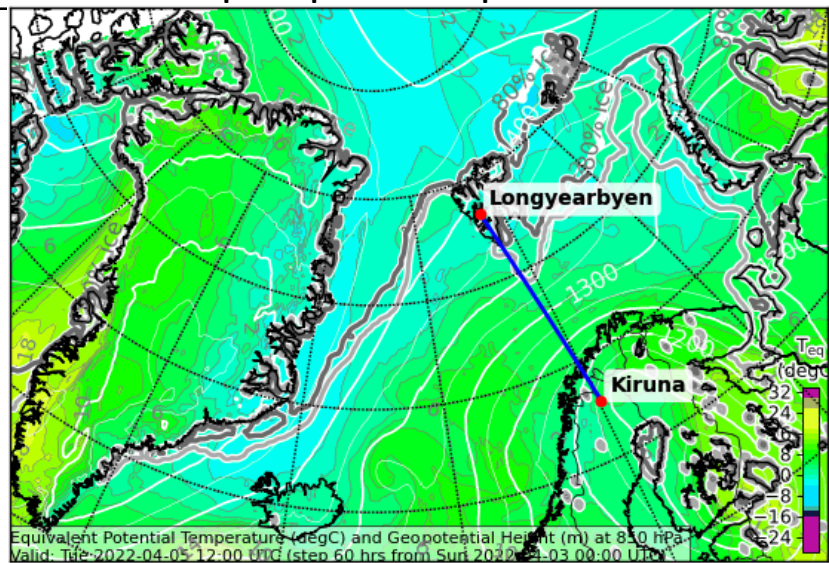
Total cloud cover – 00 UTC Run



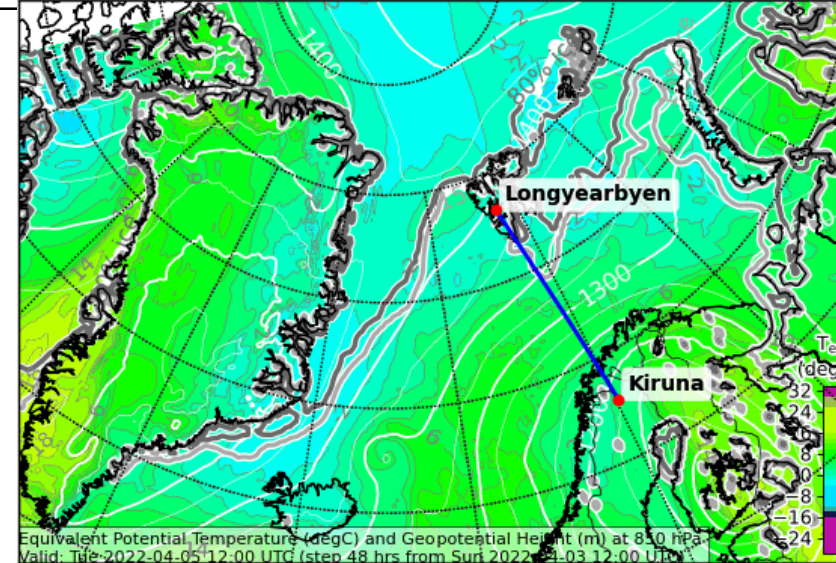
Total cloud cover – 12 UTC Run



850 hPa Equiv. pot. Temperature – 00 UTC

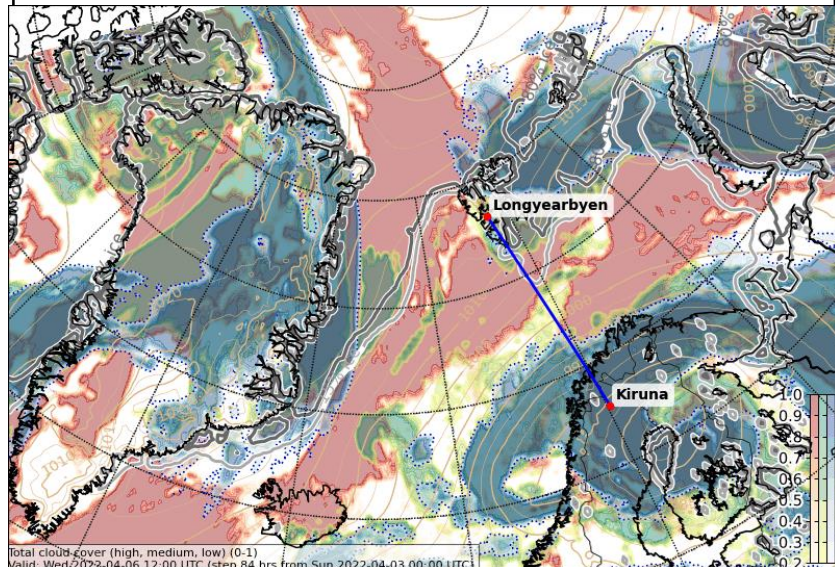


850 hPa Equiv. pot. Temperature – 12 UTC

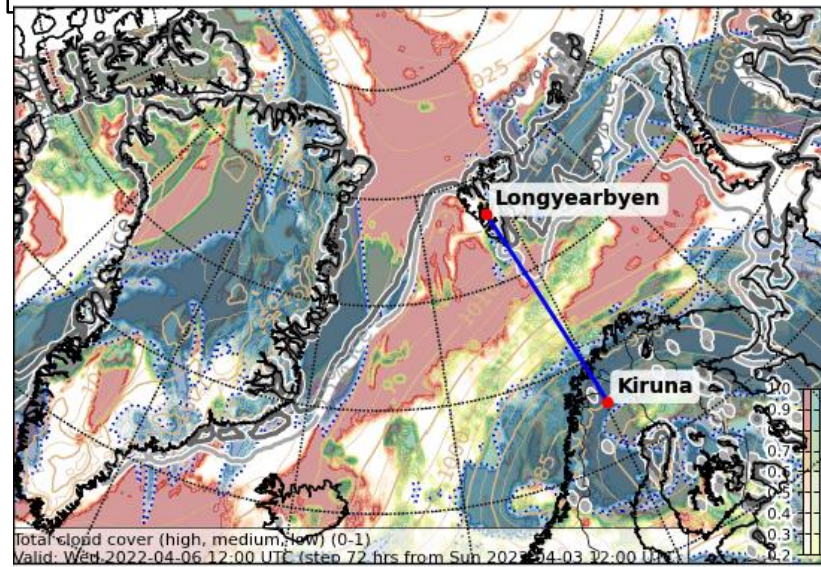


Wed, 2022-04-06 12 UTC (+108h)

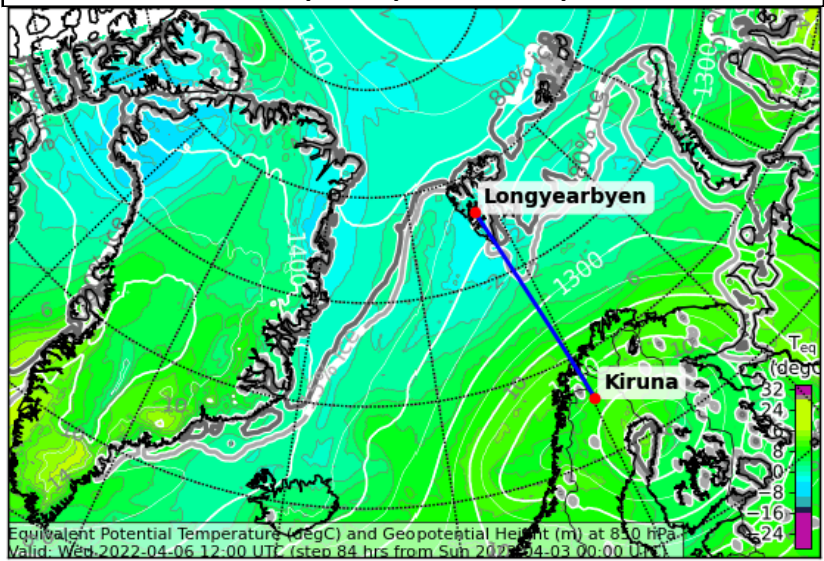
Total cloud cover – 00 UTC Run



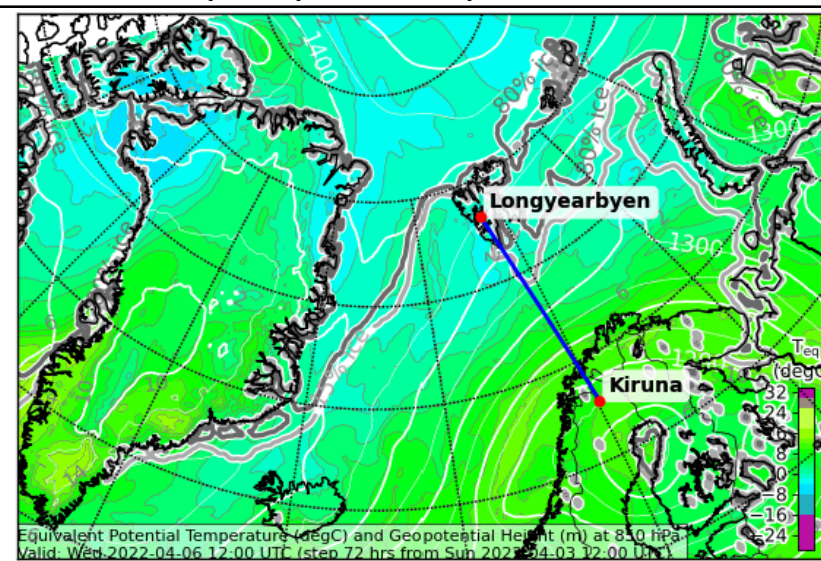
Total cloud cover – 12 UTC Run



850 hPa Equiv. pot. temperature

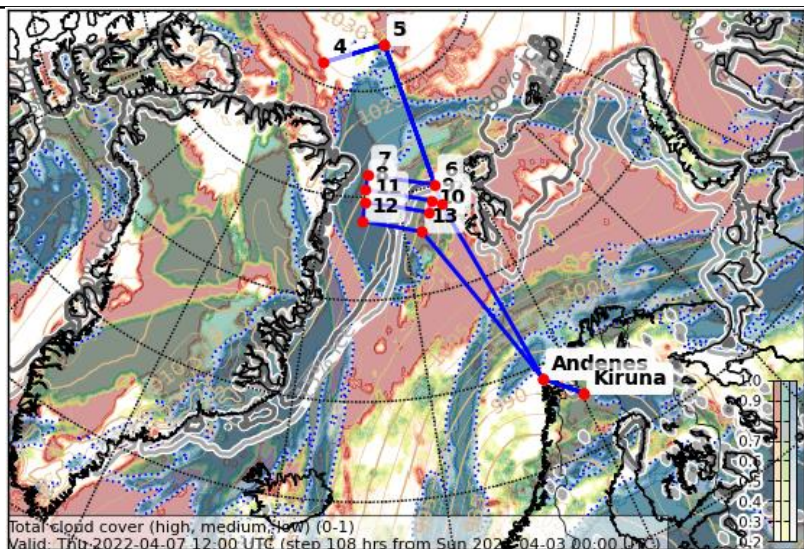


850 hPa Equiv. pot. Temperature – 12 UTC

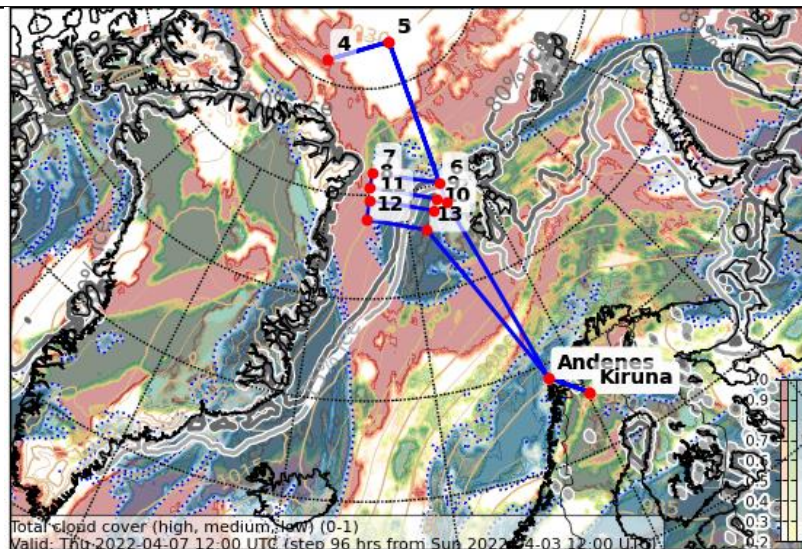


Thu, 2022-04-07 12 UTC (+132h)

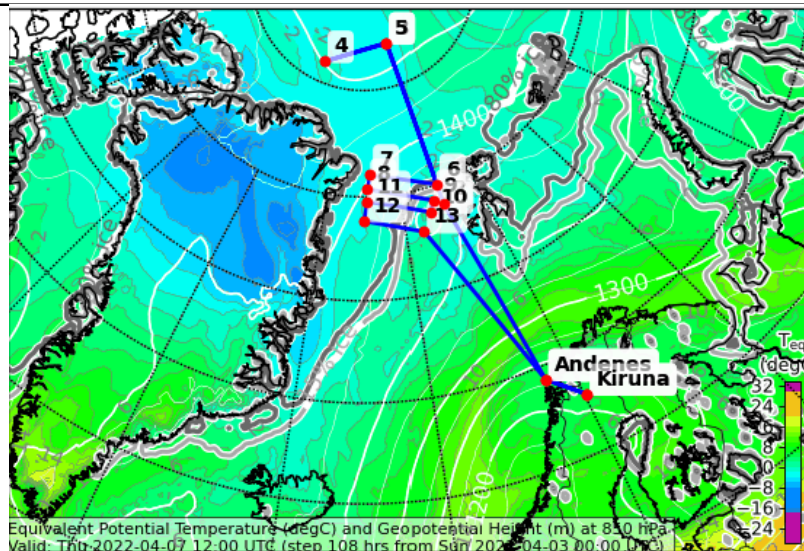
Total cloud cover – 00 UTC Run



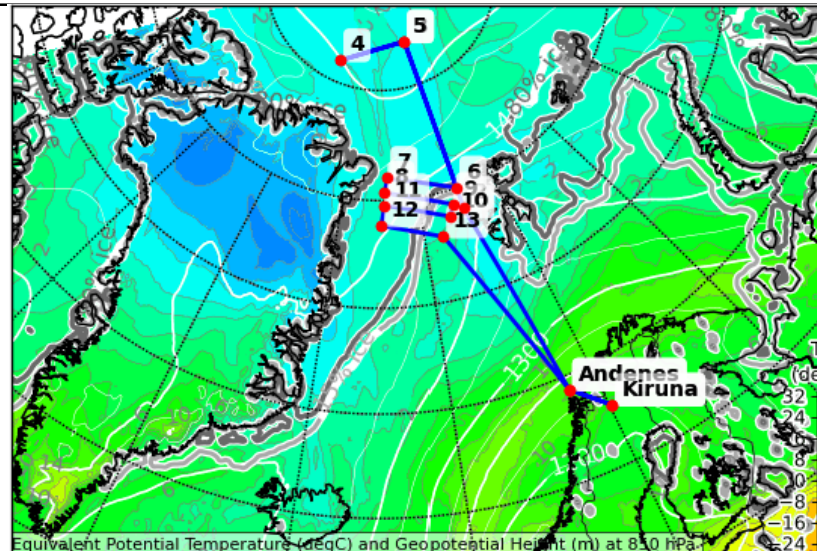
Total cloud cover – 12 UTC Run



850 hPa Equiv. pot. temperature

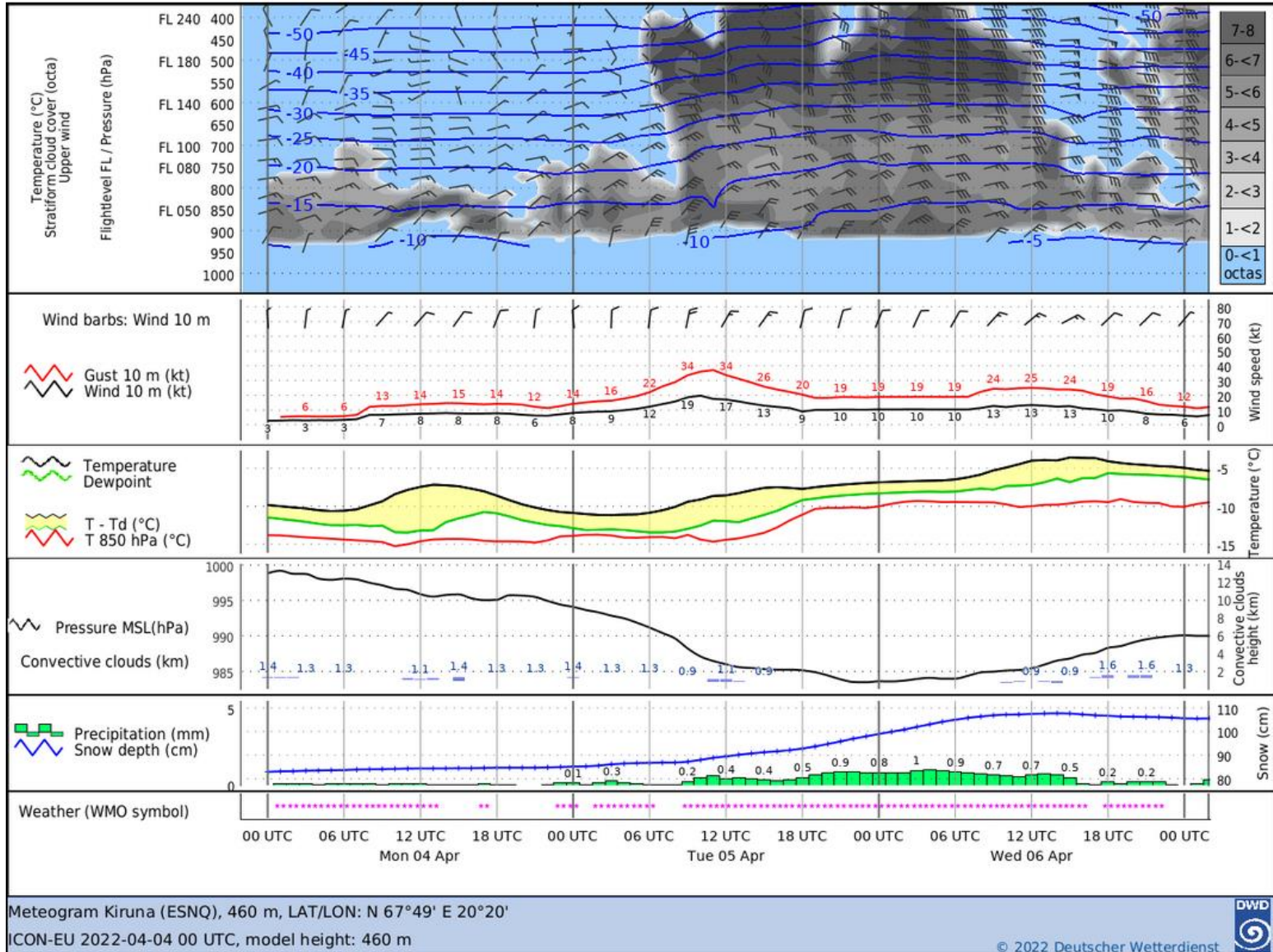


850 hPa Equiv. pot. Temperature – 12 UTC



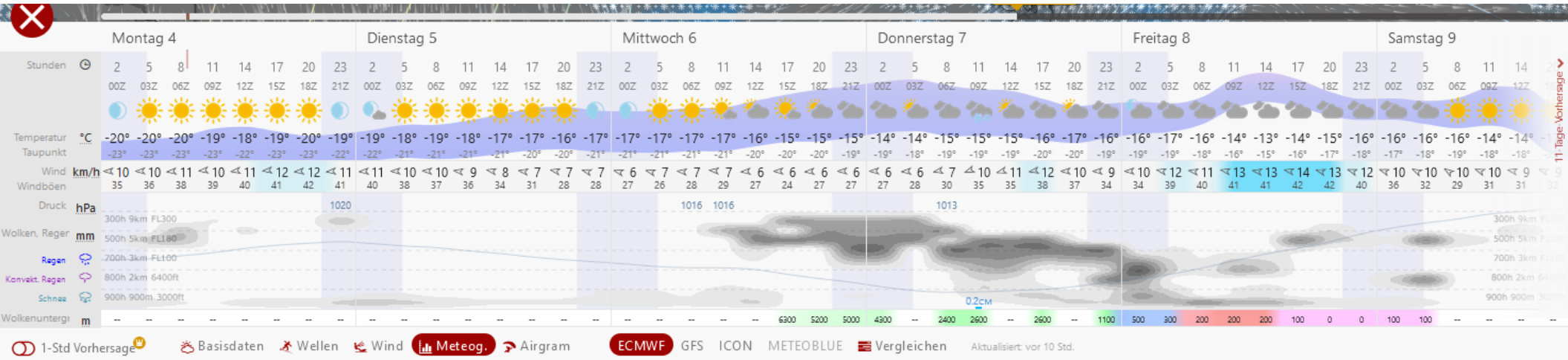
Airport meteograms & local weather at Kiruna/Svalbard

Kiruna:

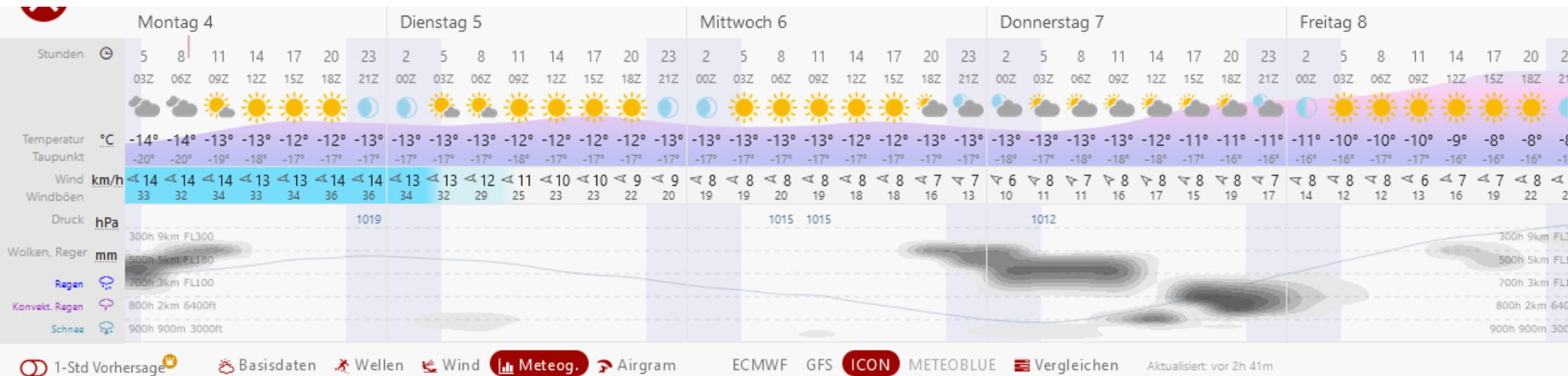


Longyearbyen:

ECWMF y12



ICON t00



Summary

Summary: Weather Update 2022-04-04, 09:00 LT

- **Monday, 2022-04-04:**
 - No significant changes
- **Tuesday, 2022-04-05:**
 - Temperature in Fram Strait increases
 - Convergence line fades (tilts in ICON)
 - Moist air with precip. between Norway and Svalbard
 - Strong snowfall expected for Kiruna (peak from Tuesday evening to Wednesday)
- **Wednesday, 2022-04-06:**
 - Greenland airmass development: cooling and drying
- **Thursday, 2022-04-07:**
 - Northeastern Greenland is very dry and cold compared to previous days
 - Chance for Polar Low (but uncertain), less pronounced in recent forecasts
 - Weak T gradients in Fram Strait
- **Friday, 2022-04-08:**
 - Eastern Fram Strait warmer than Western
 - Polar Low fades in ECMWF but in ICON another vortex forming on Thursday moves northward