

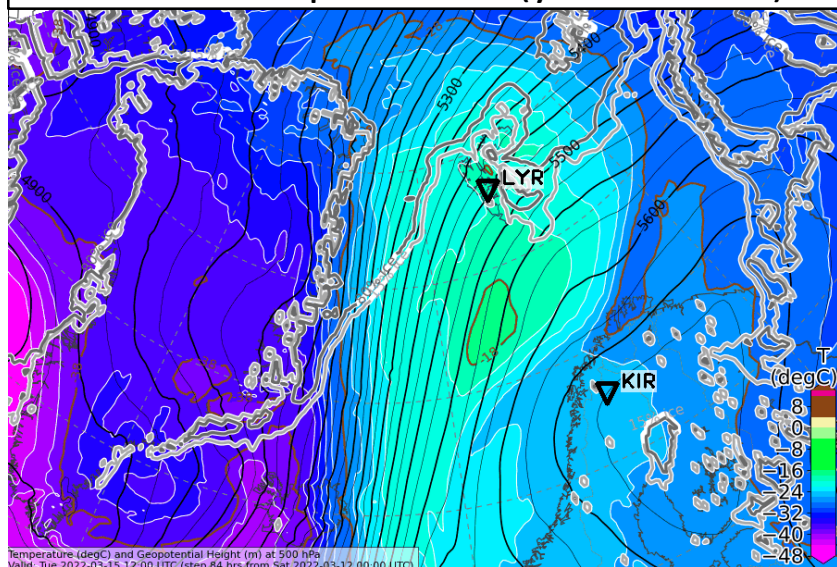
# Weather update HALO-(AC)<sup>3</sup>

Saturday, 2022-03-13, 09:00 LT

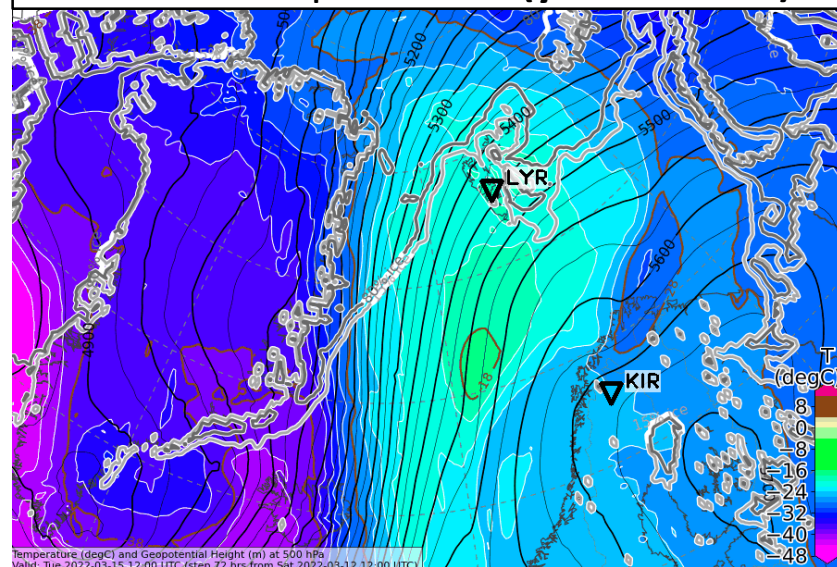
## **Forecast comparison yesterday 00 UTC vs. 12 UTC**

Tue, 2022-03-15 12 UTC (+72h)

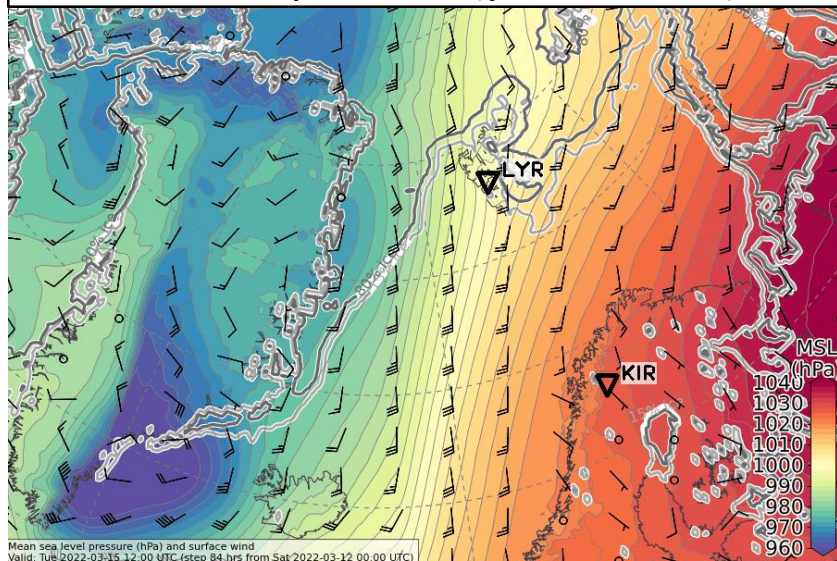
500 hPa Geopot. and T (yest. 00 UTC)



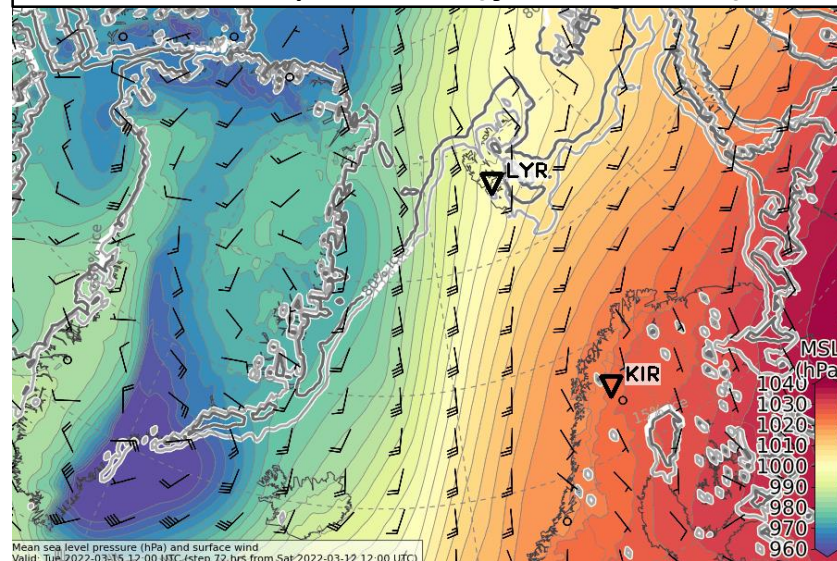
500 hPa Geopot. and T (yest. 12 UTC)



Sea level pressure (yest. 00 UTC)

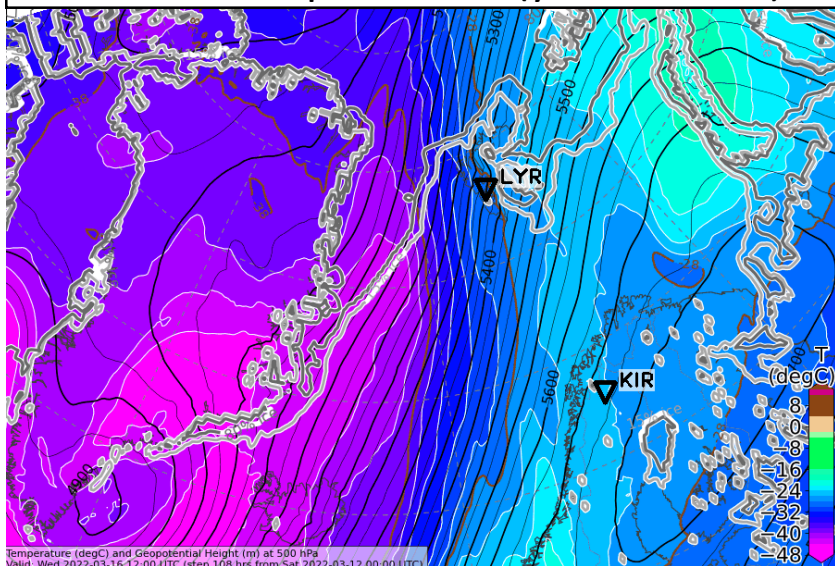


Sea level pressure (yest. 12 UTC)

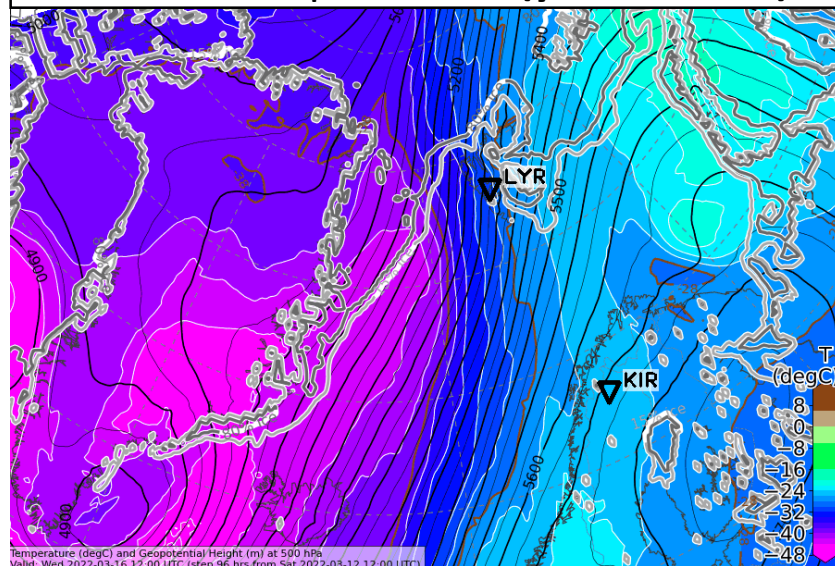


Wed, 2022-03-16 12 UTC (+96h)

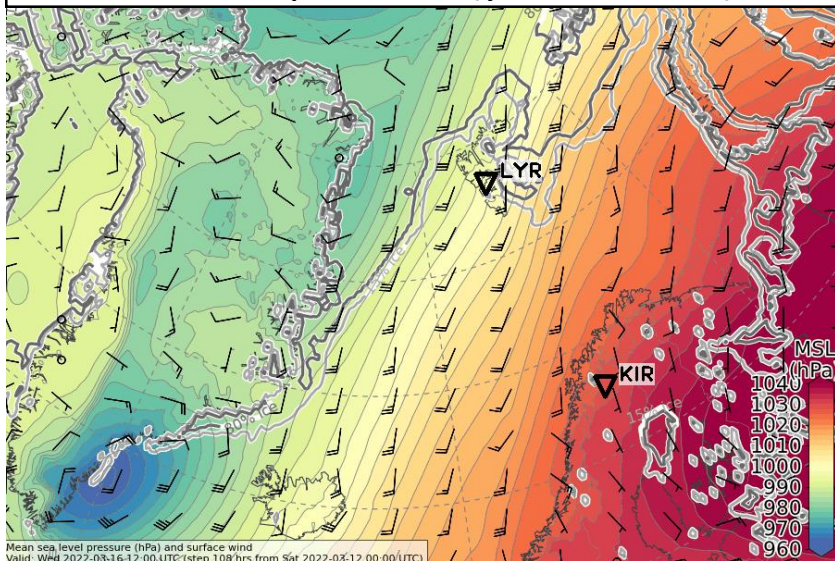
500 hPa Geopot. and T (yest. 00 UTC)



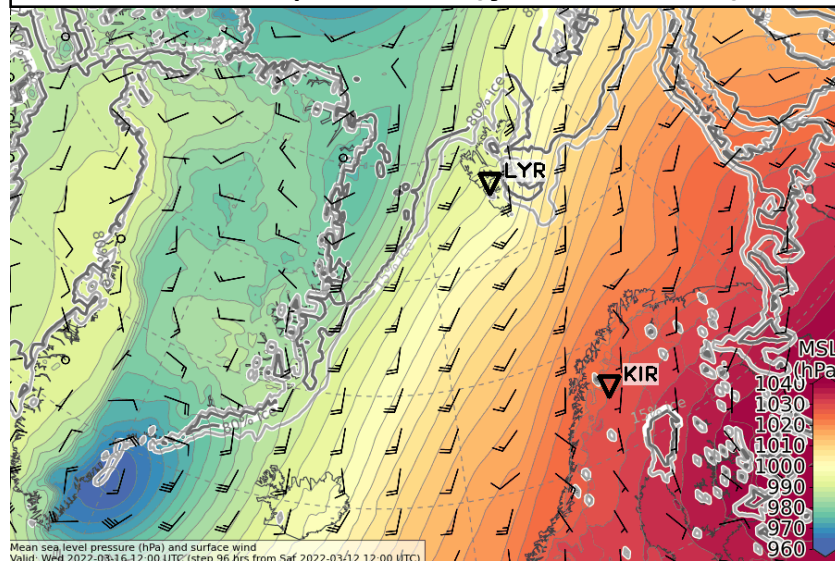
500 hPa Geopot. and T (yest. 12 UTC)



Sea level pressure (yest. 00 UTC)

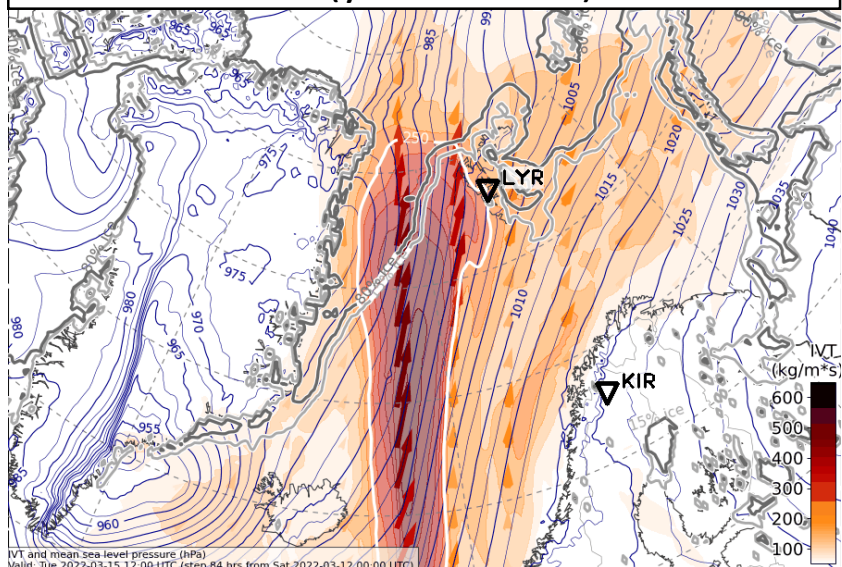


Sea level pressure (yest. 12 UTC)

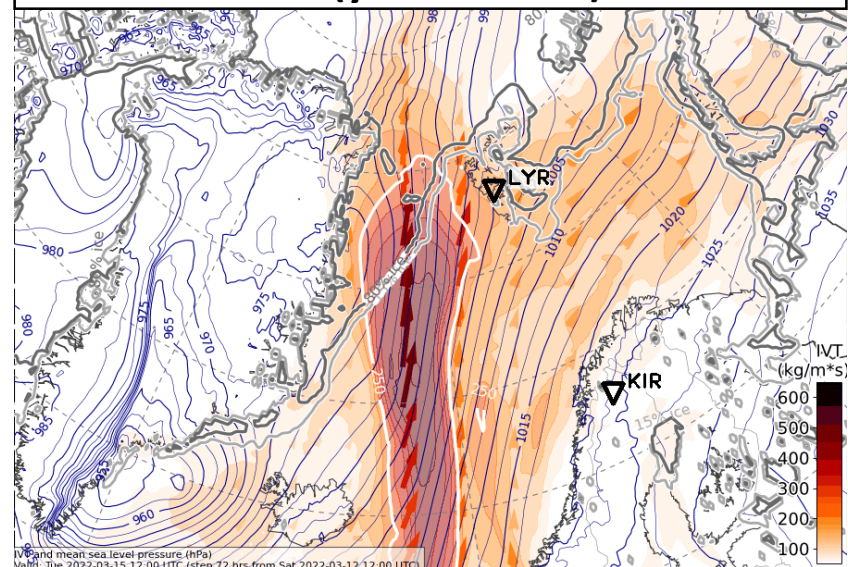


Tue, 2022-03-15 12 UTC (+72h)

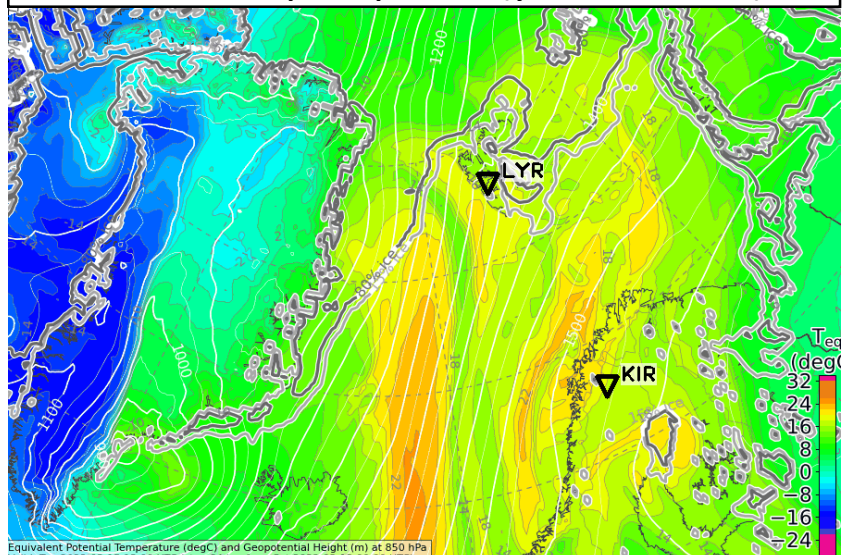
IVT (yest. 00 UTC)



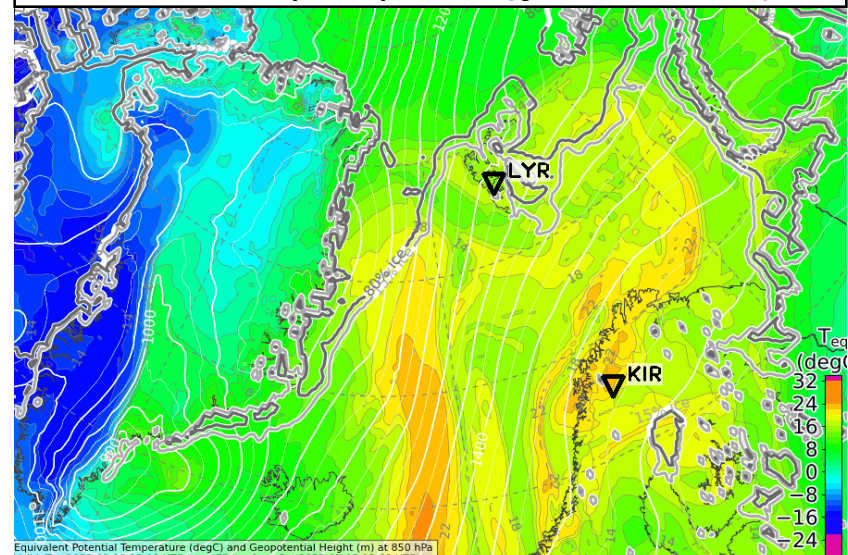
IVT (yest. 12 UTC)



850 hPa Equiv. pot. T (yest. 00 UTC)

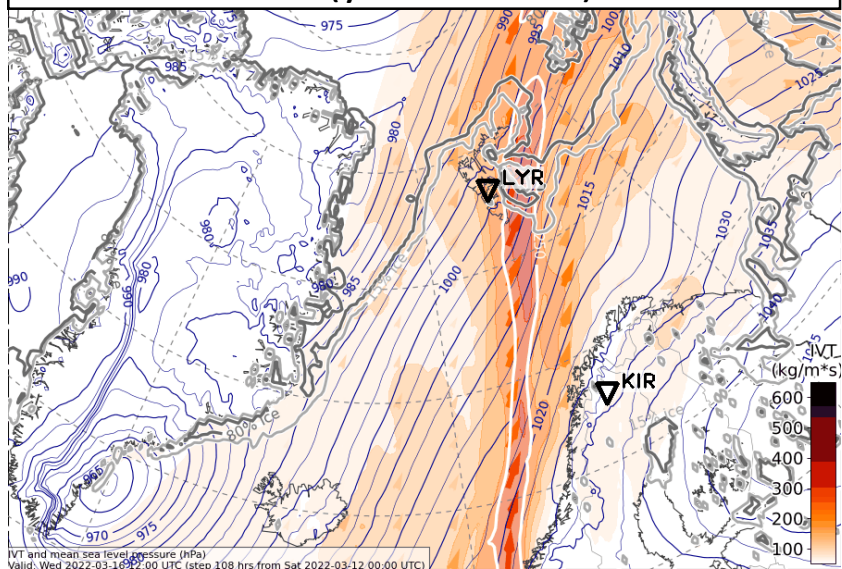


850 hPa Equiv. pot. T (yest. 12 UTC)

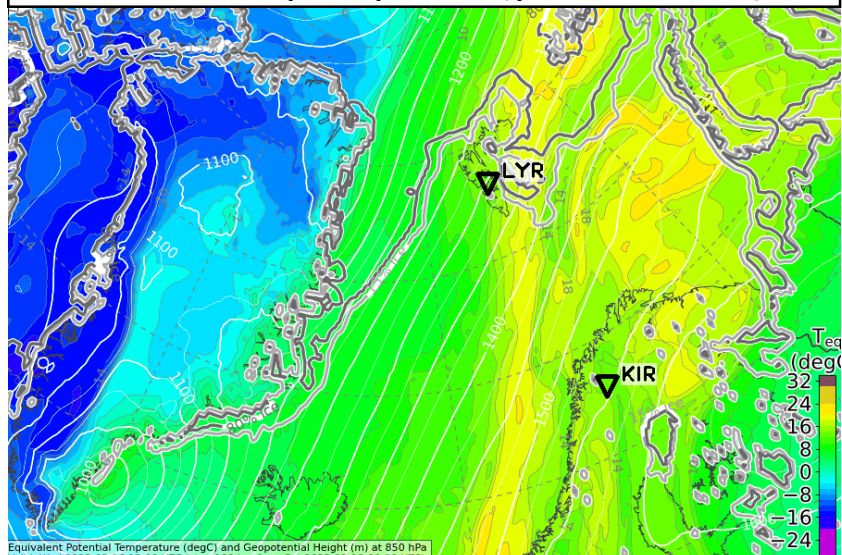


Wed, 2022-03-16 12 UTC (+72h)

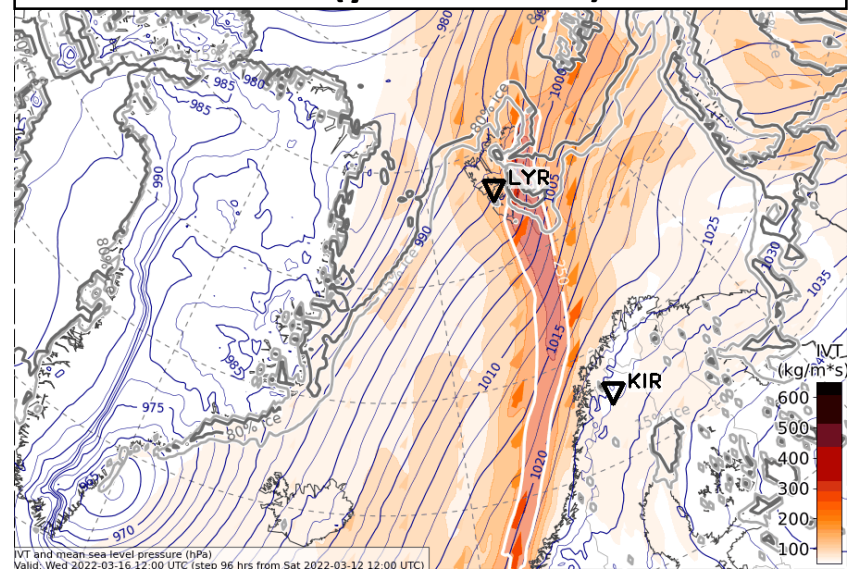
IVT (yest. 00 UTC)



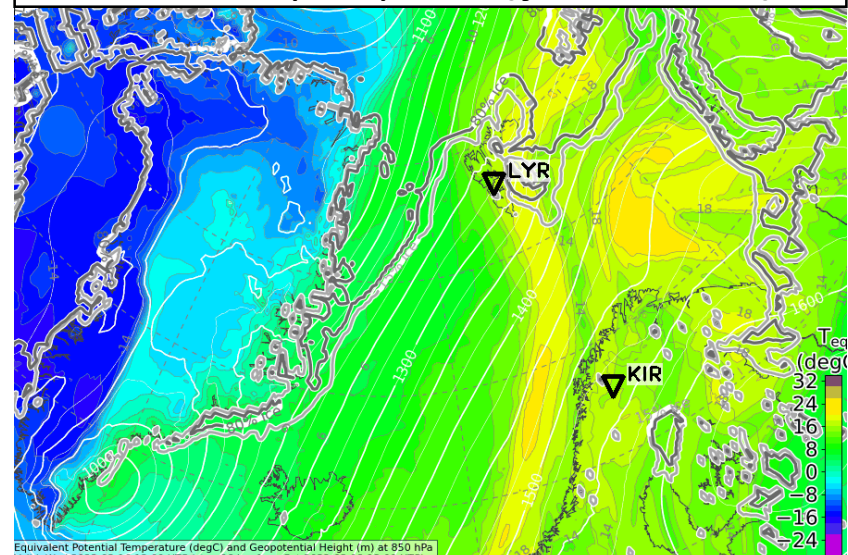
850 hPa Equiv. pot. T (yest. 00 UTC)



IVT (yest. 12 UTC)



850 hPa Equiv. pot. T (yest. 12 UTC)



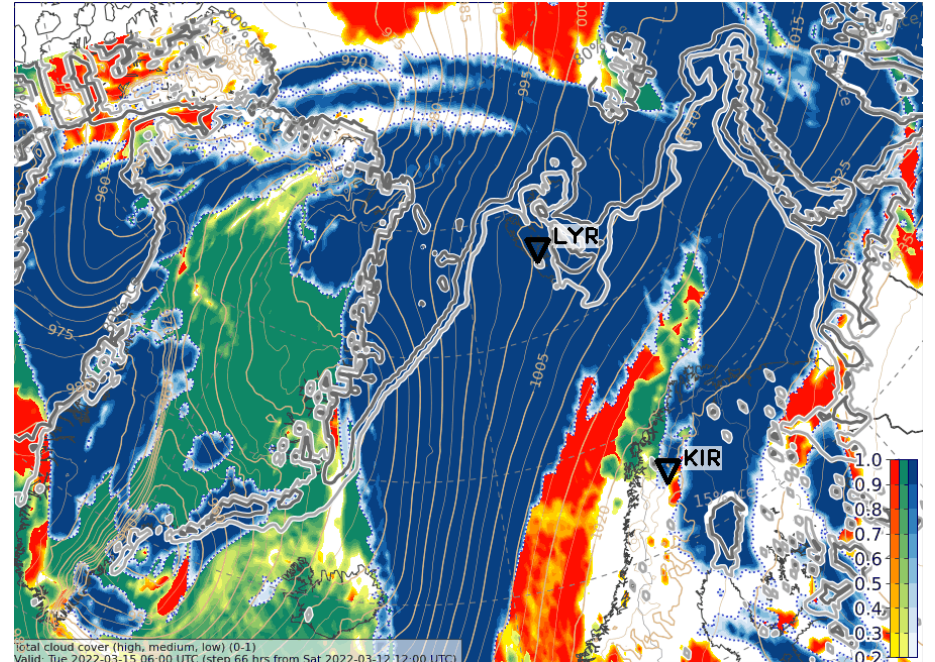
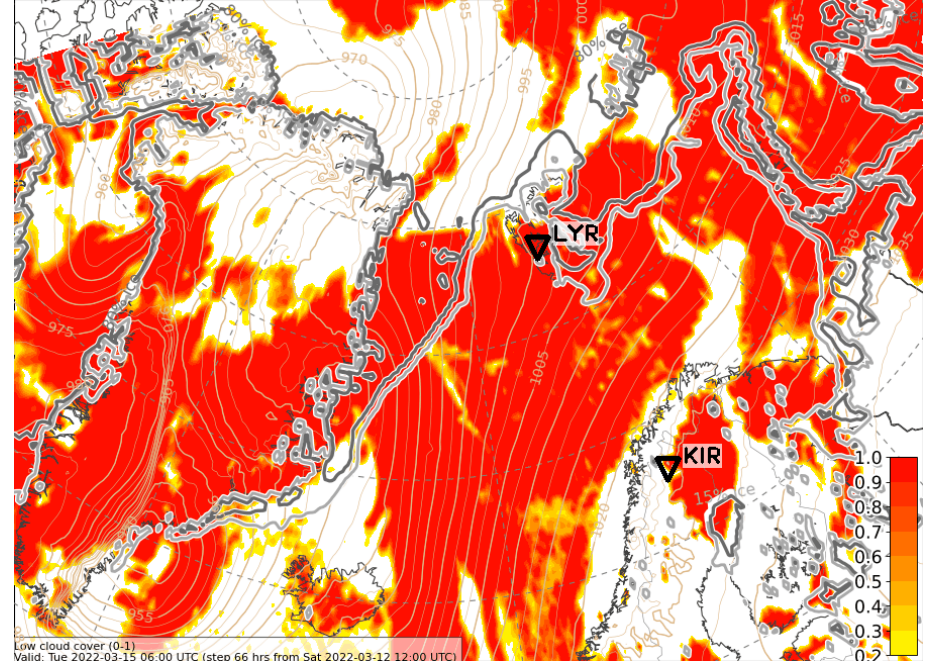
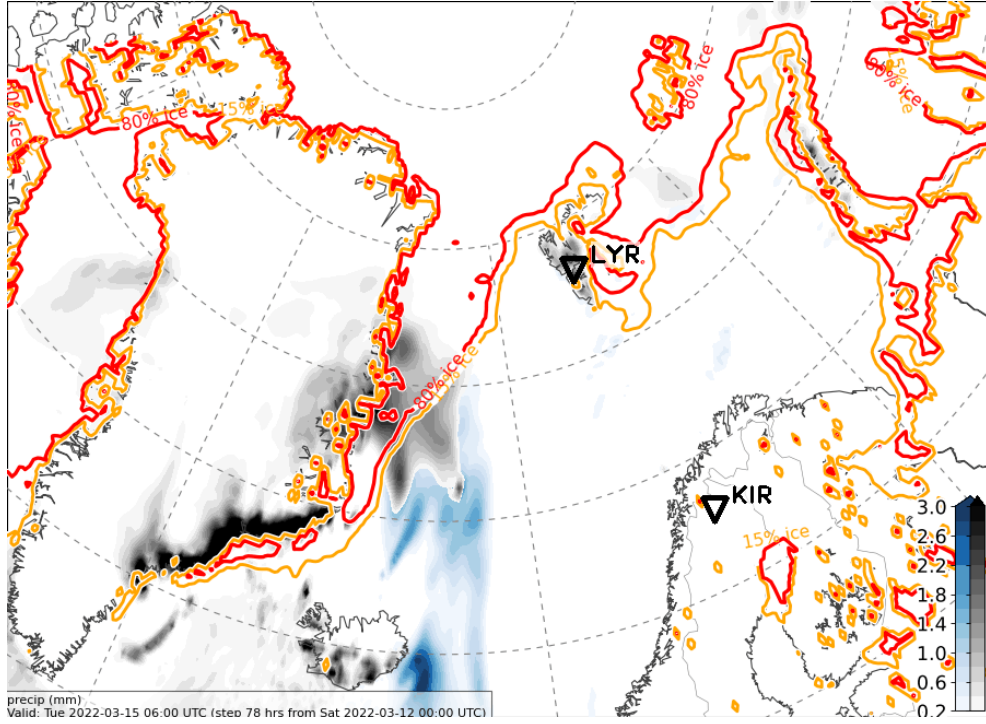
## **Detailed outlook for Tuesday & Wednesday**

2022-03-12 12 UTC: 66 – 102h

Precip & Low cloud cover

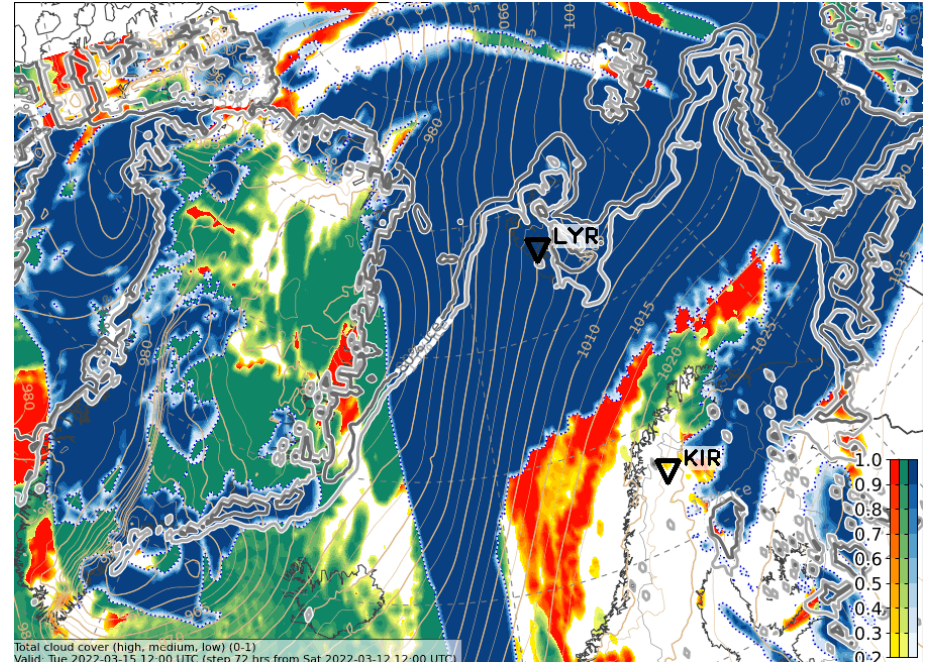
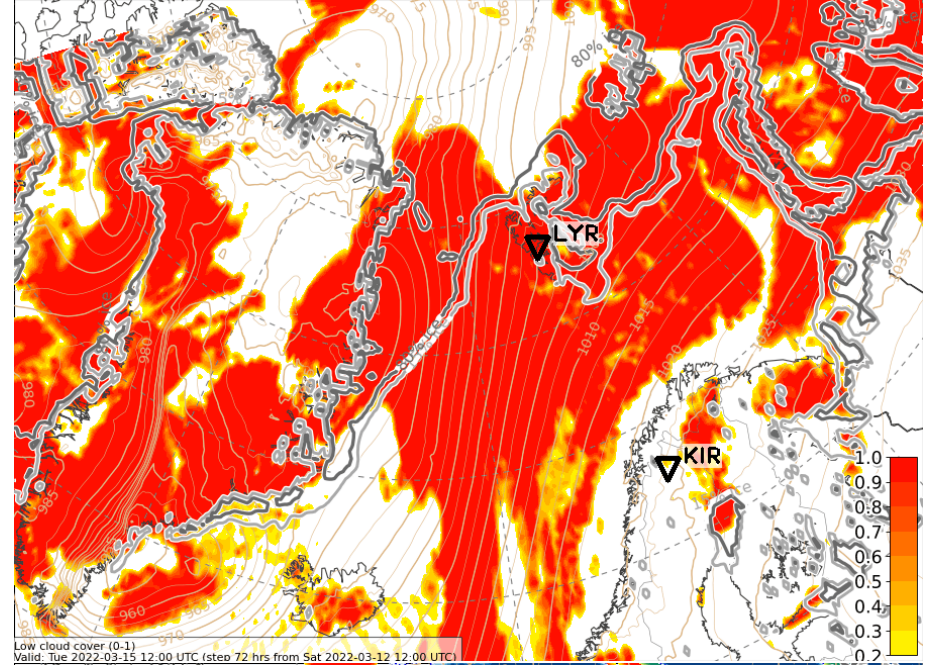
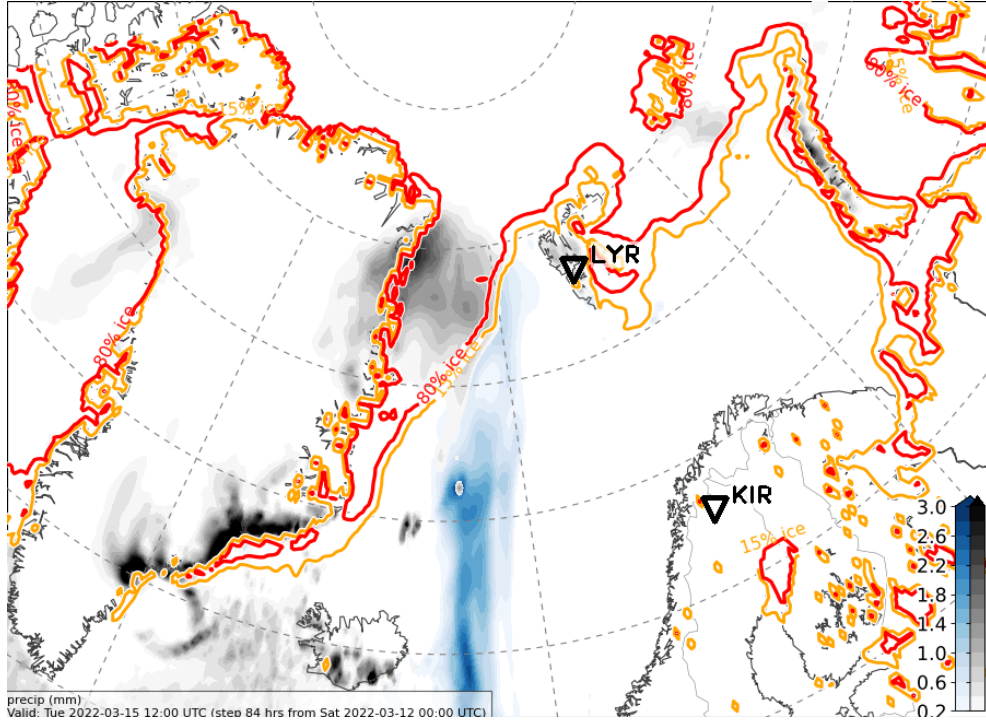
Total cloud cover

Tue, 2022-03-15 06 UTC

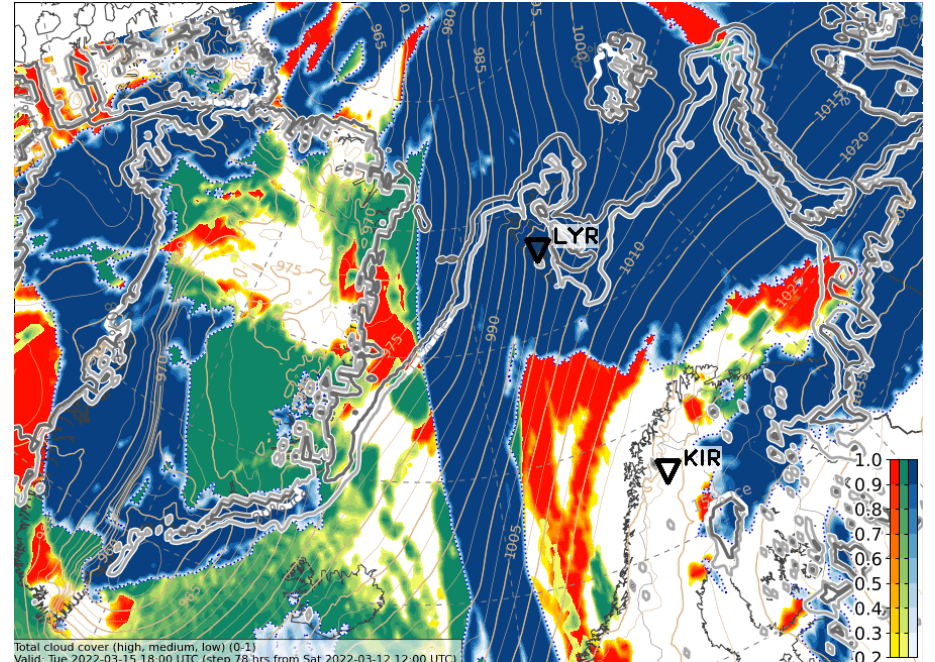
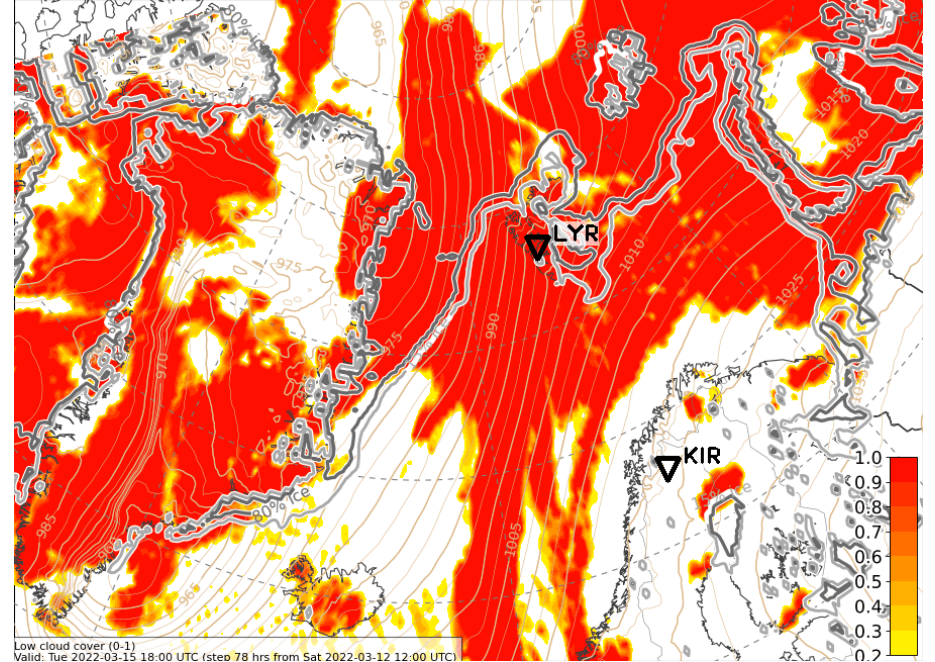
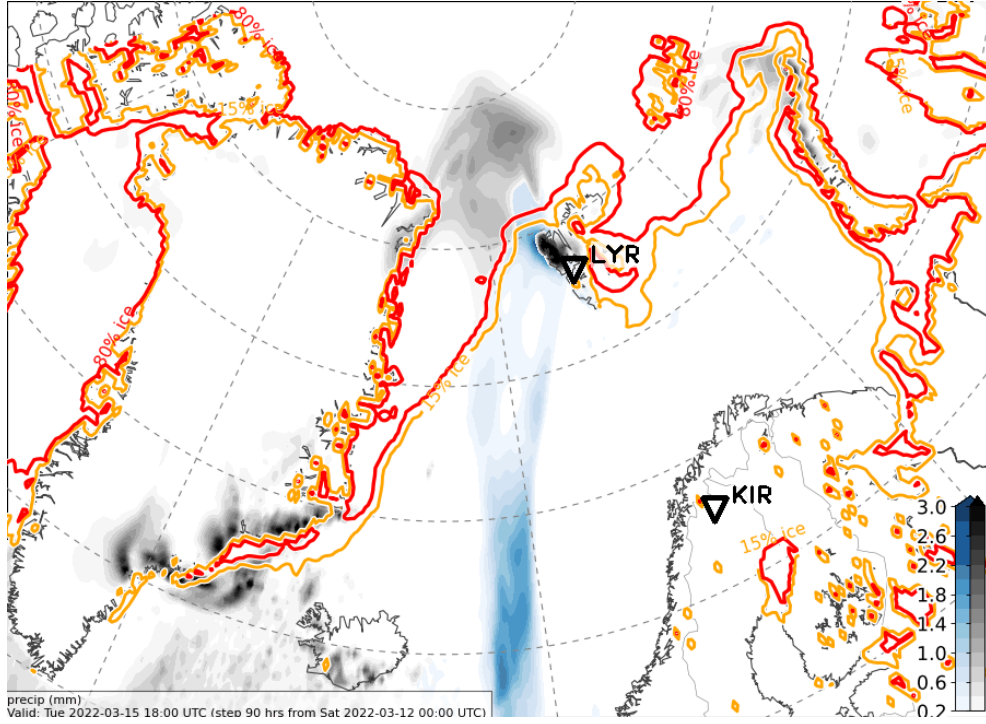




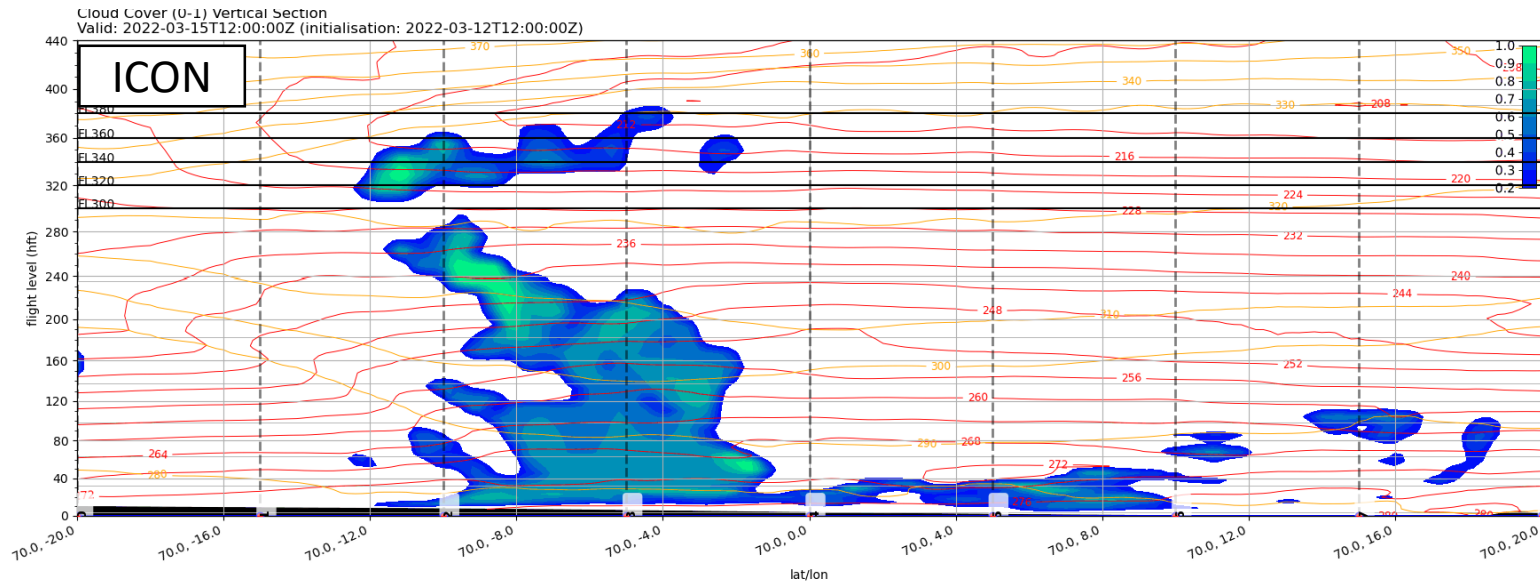
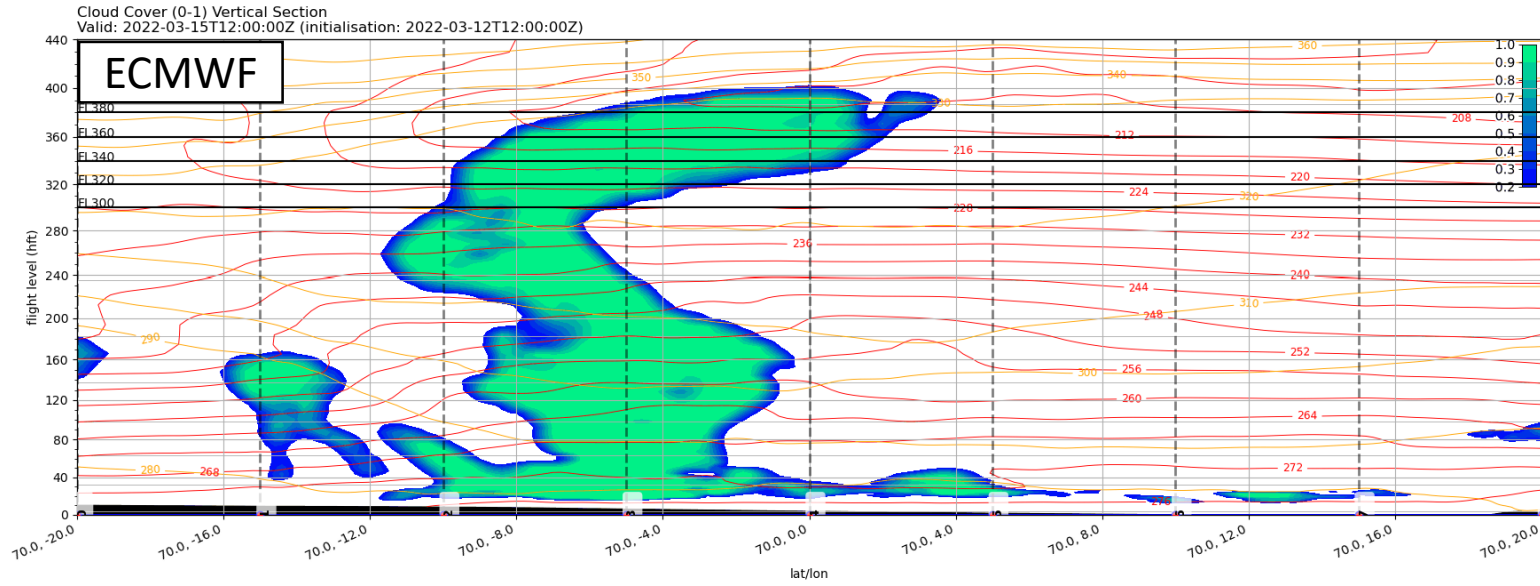
Tue, 2022-03-15 12 UTC



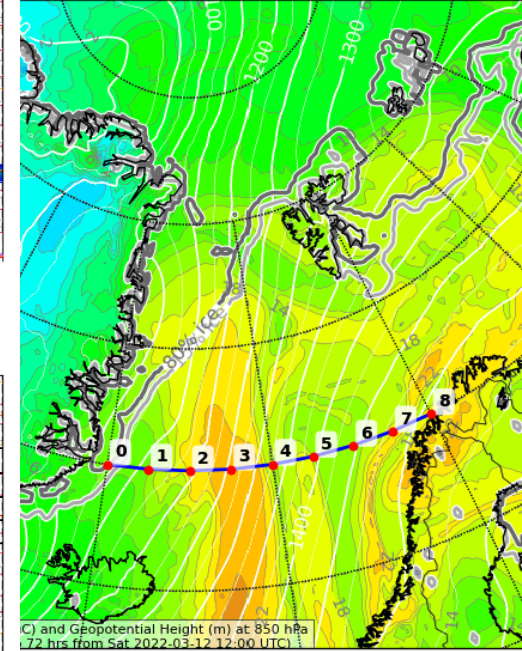
Tue, 2022-03-15 18 UTC



# Tue, 2022-03-15 12 UTC: Clouds

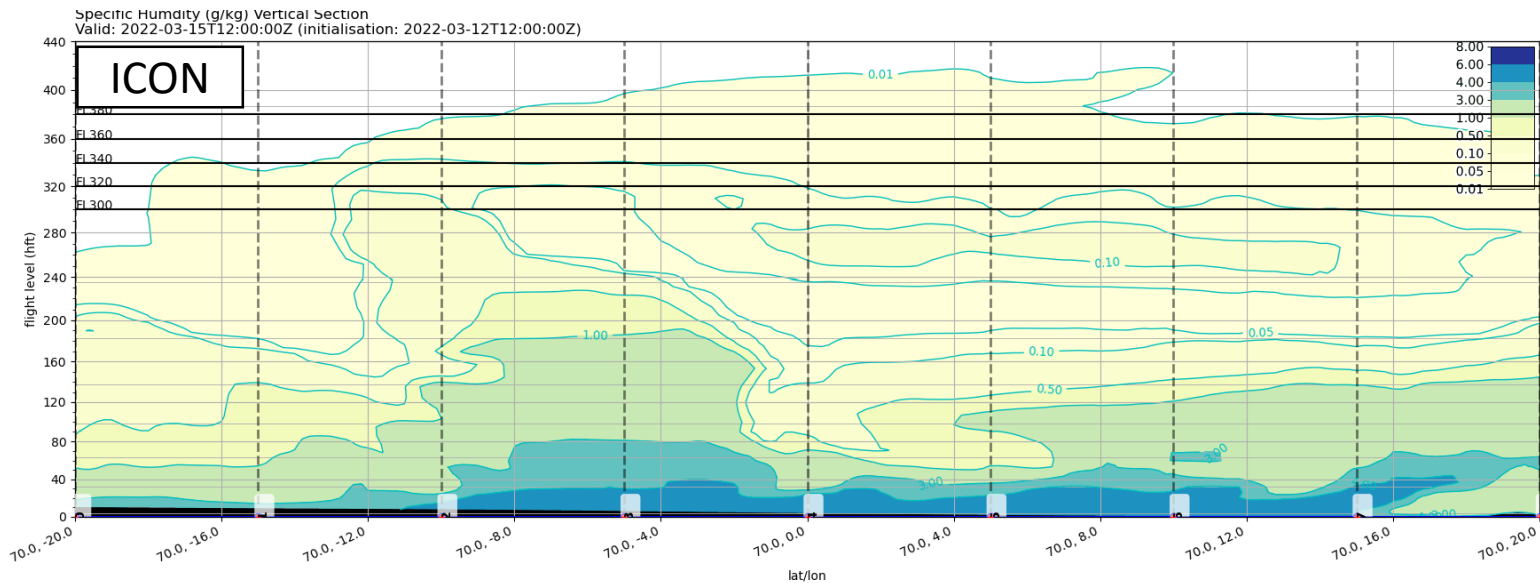
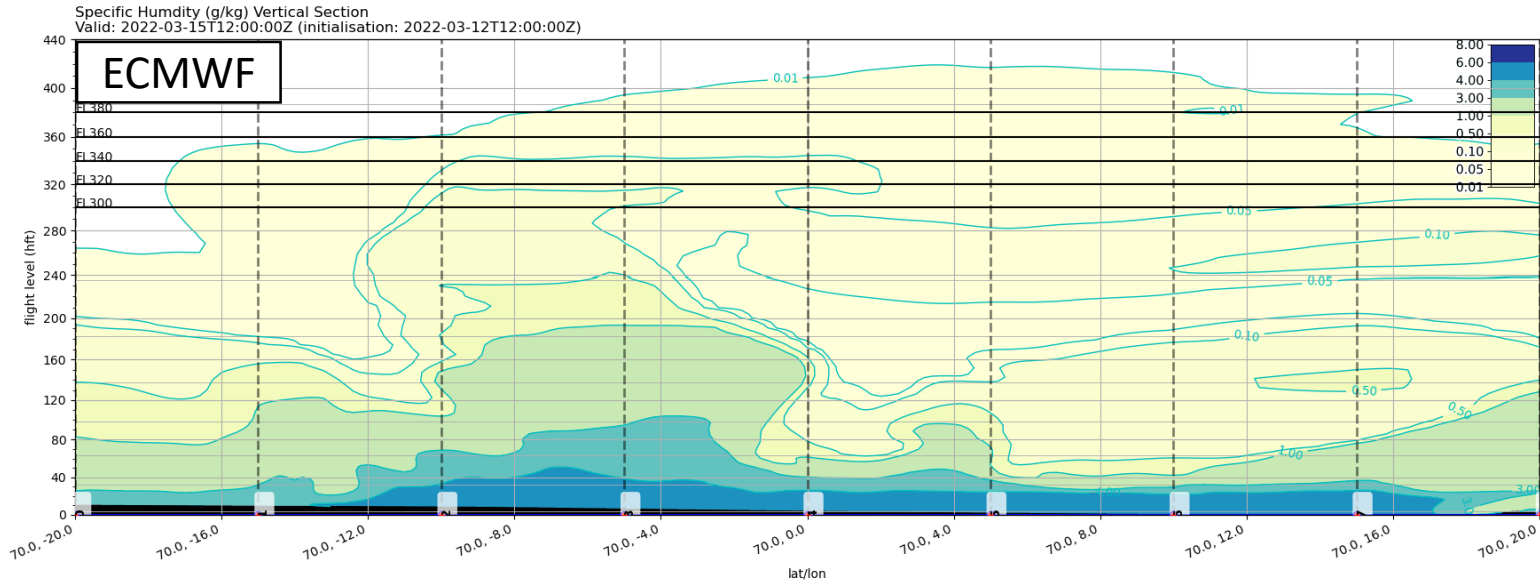


Potential (degC) and Geopotential Height (m) at 850 hPa (initialisation: 2022-03-12T12:00:00Z)

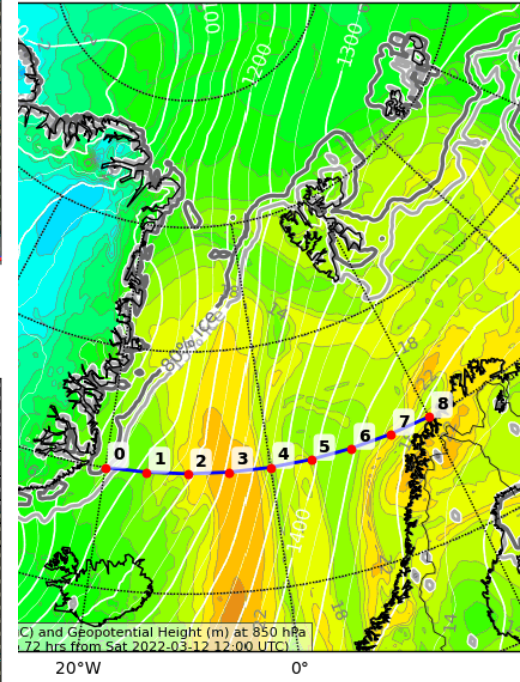


Potential (degC) and Geopotential Height (m) at 850 hPa (initialisation: 2022-03-12T12:00:00Z)

# Tue, 2022-03-15 12 UTC: Specific humidity

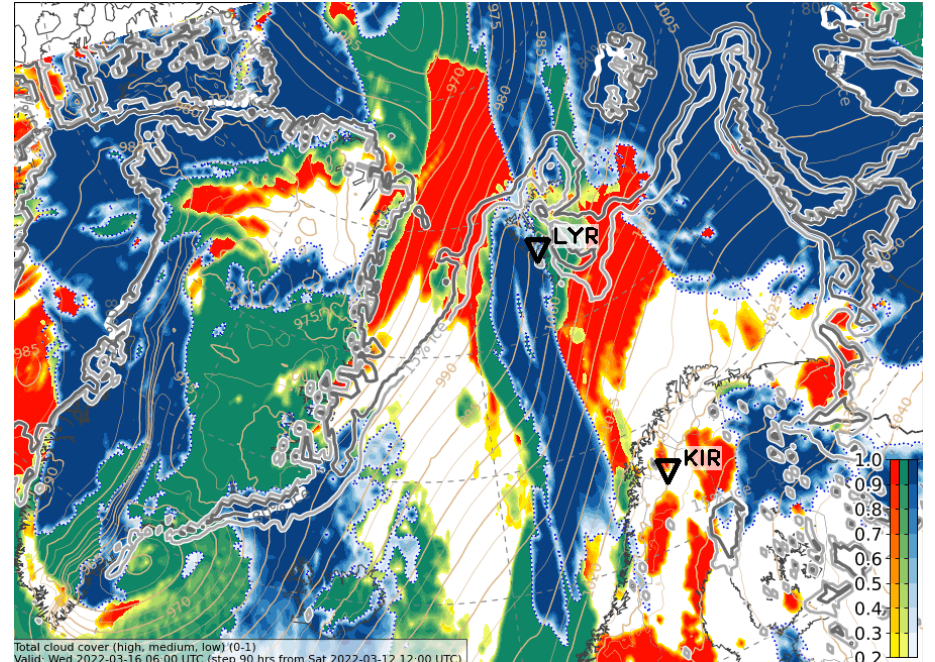
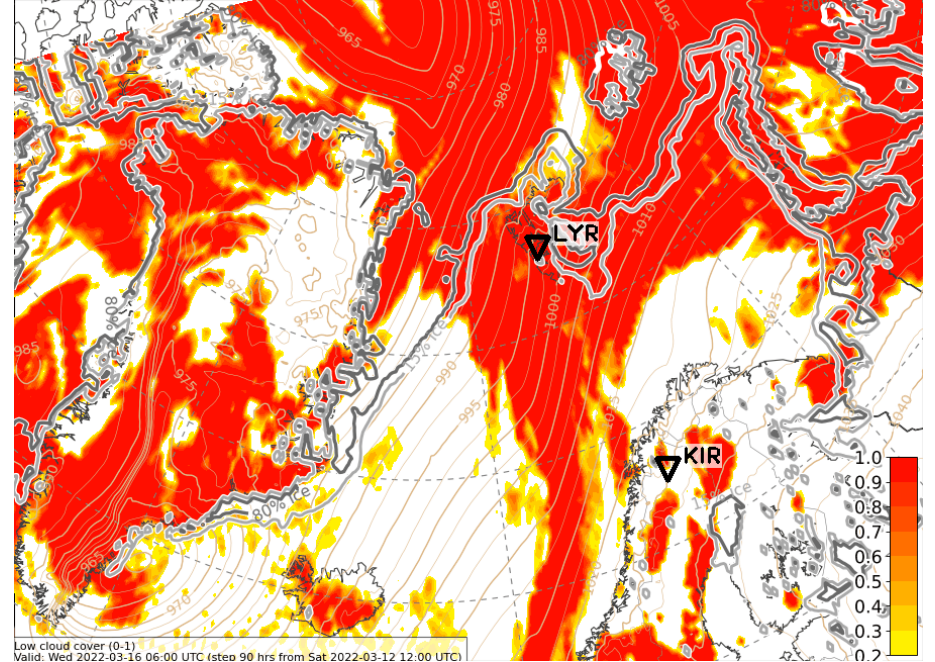
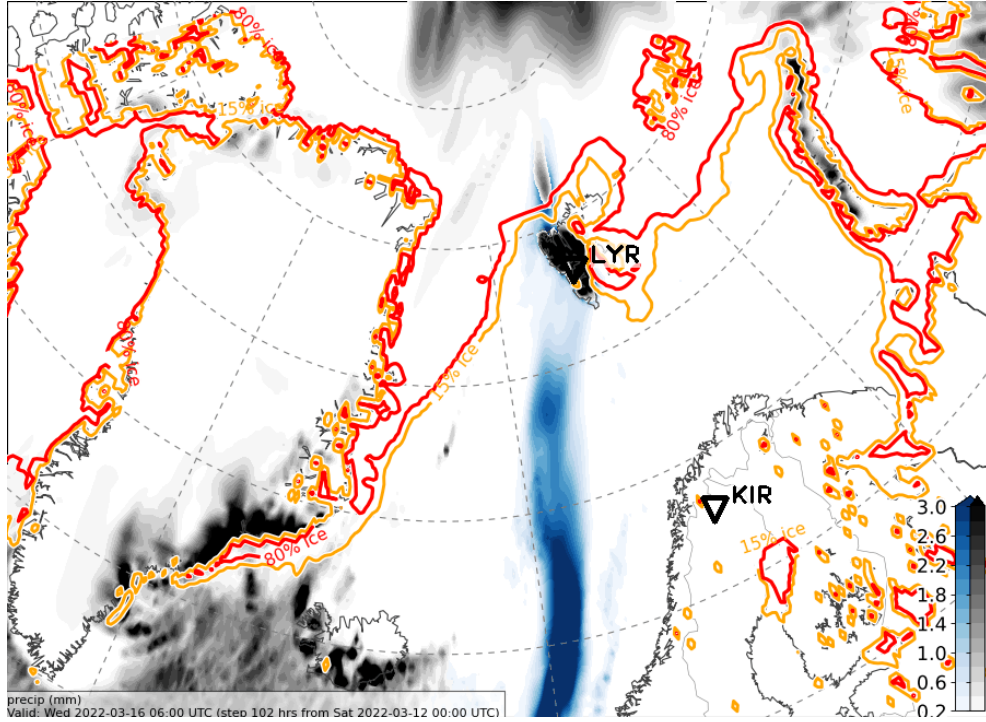


Potential (degC) and Geopotential Height (m) at 850 hPa  
Valid: 2022-03-15T12:00:00Z (initialisation: 2022-03-12T12:00:00Z)

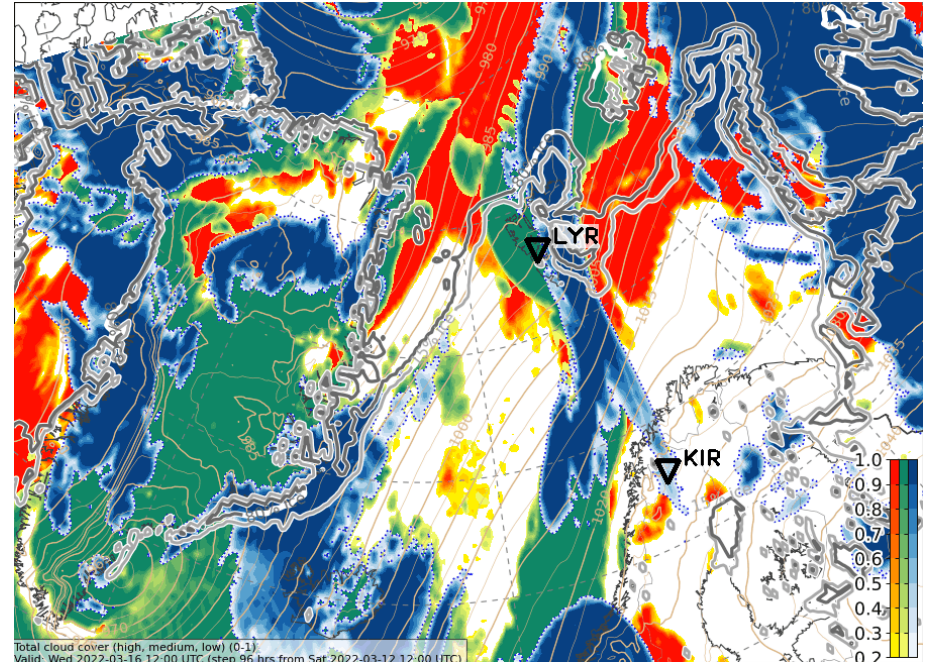
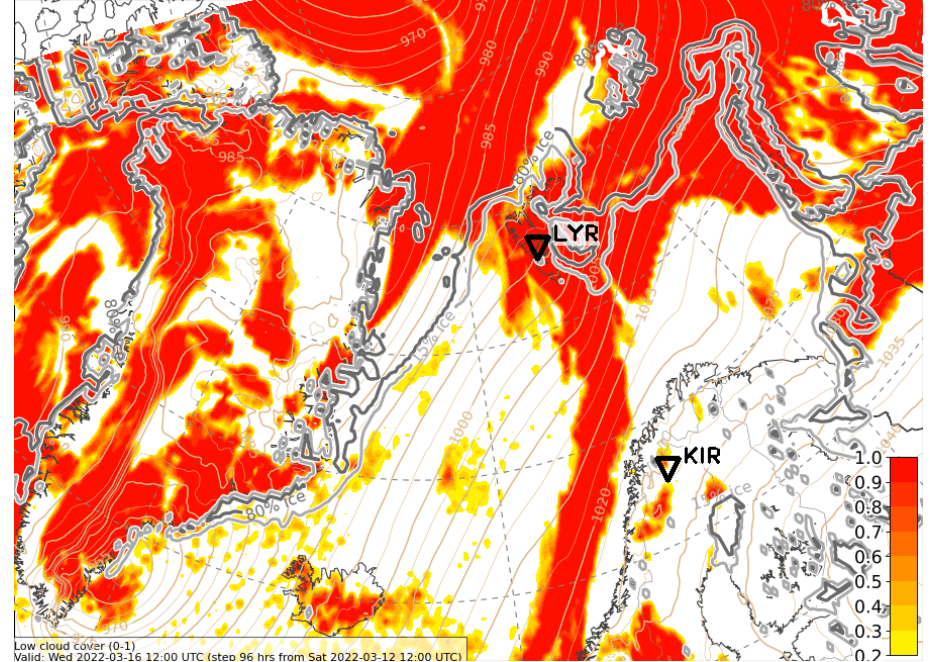
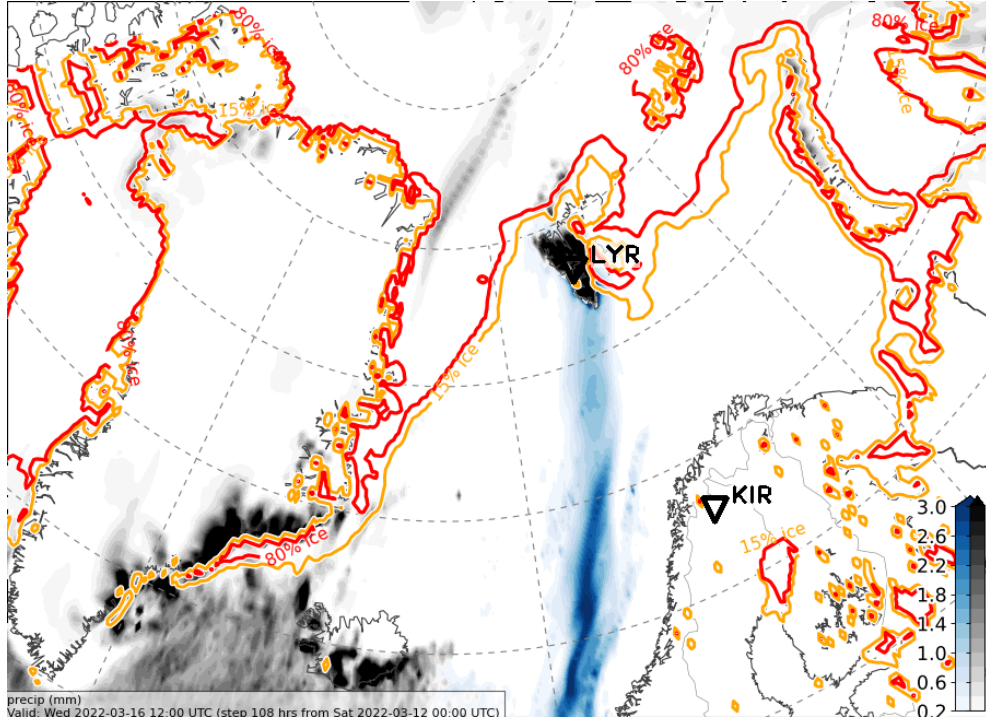


Potential (degC) and Geopotential Height (m) at 850 hPa  
Valid: 2022-03-15T12:00:00Z (initialisation: 2022-03-12T12:00:00Z)

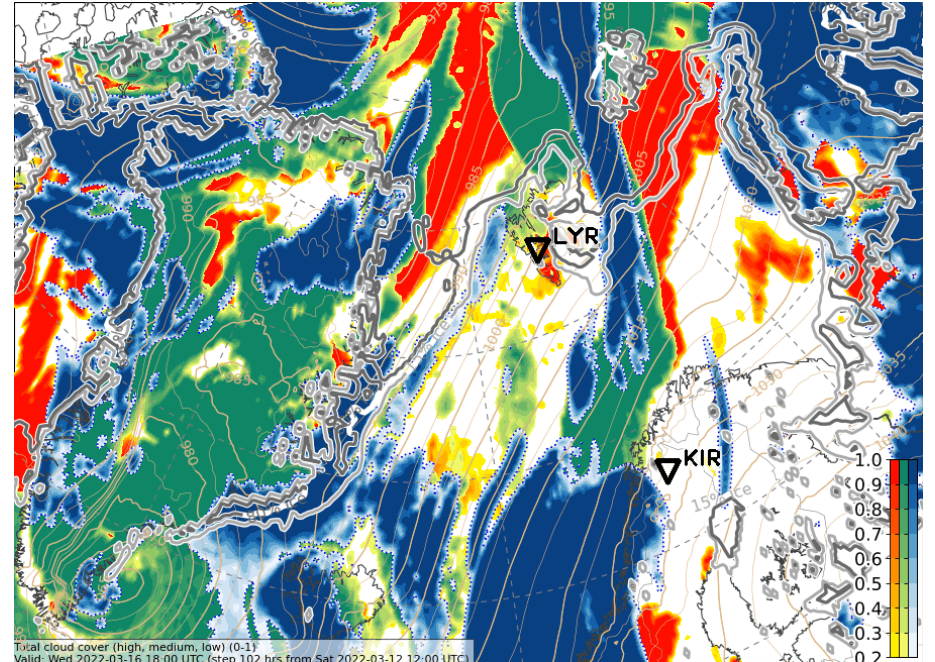
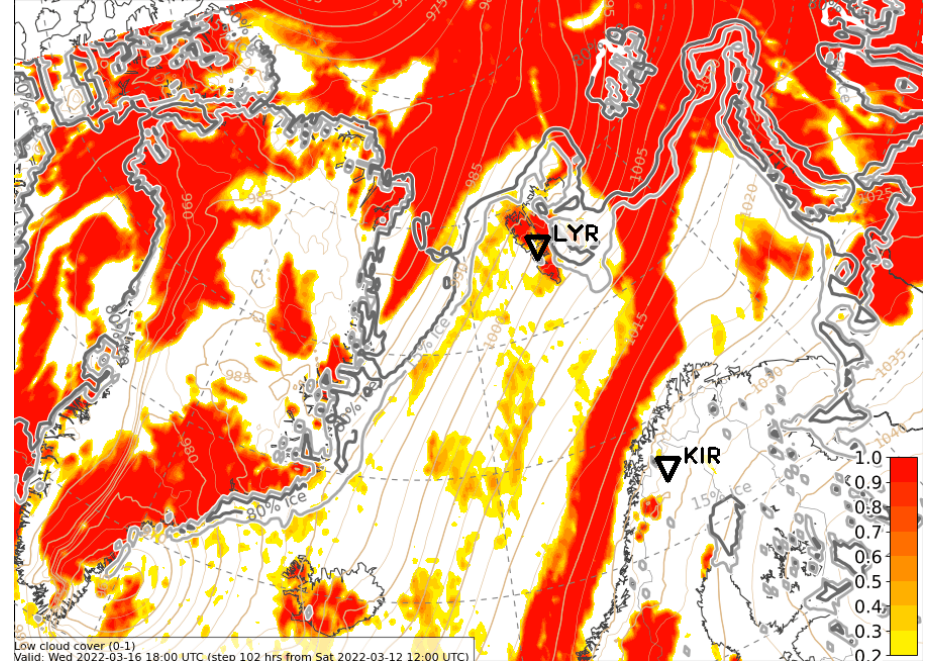
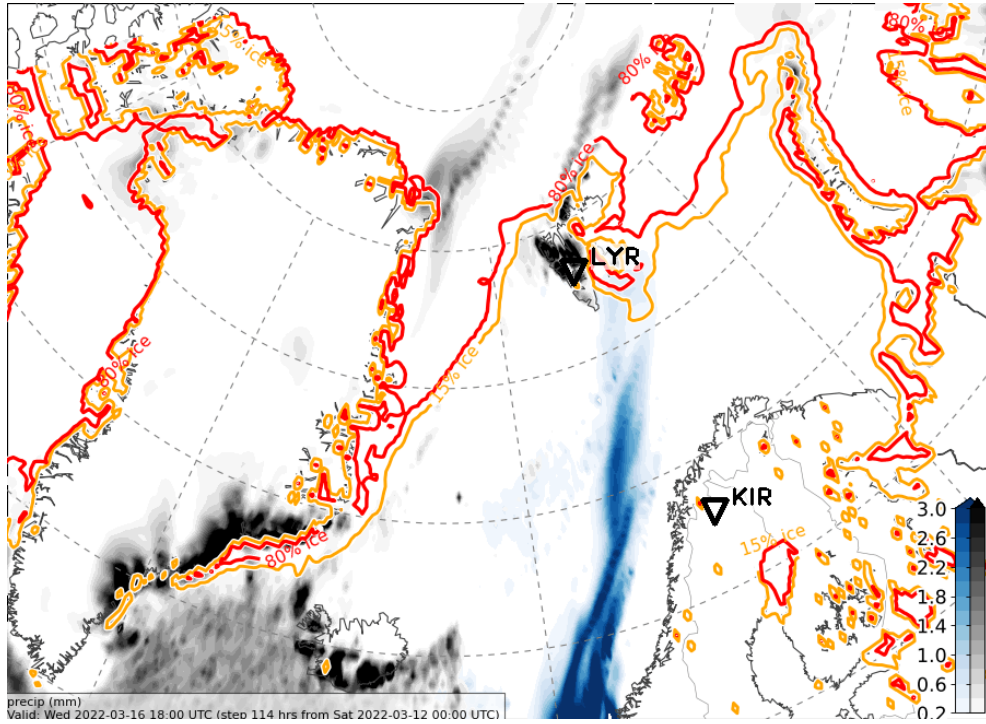
Wed, 2022-03-16 06 UTC



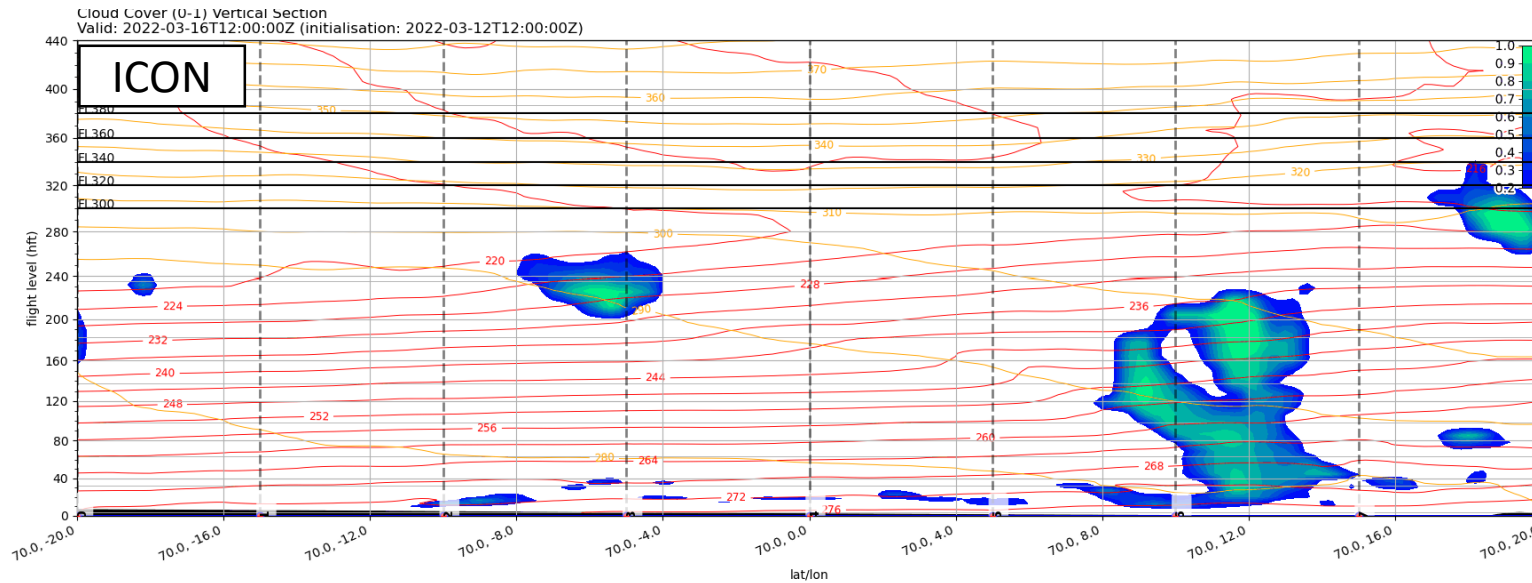
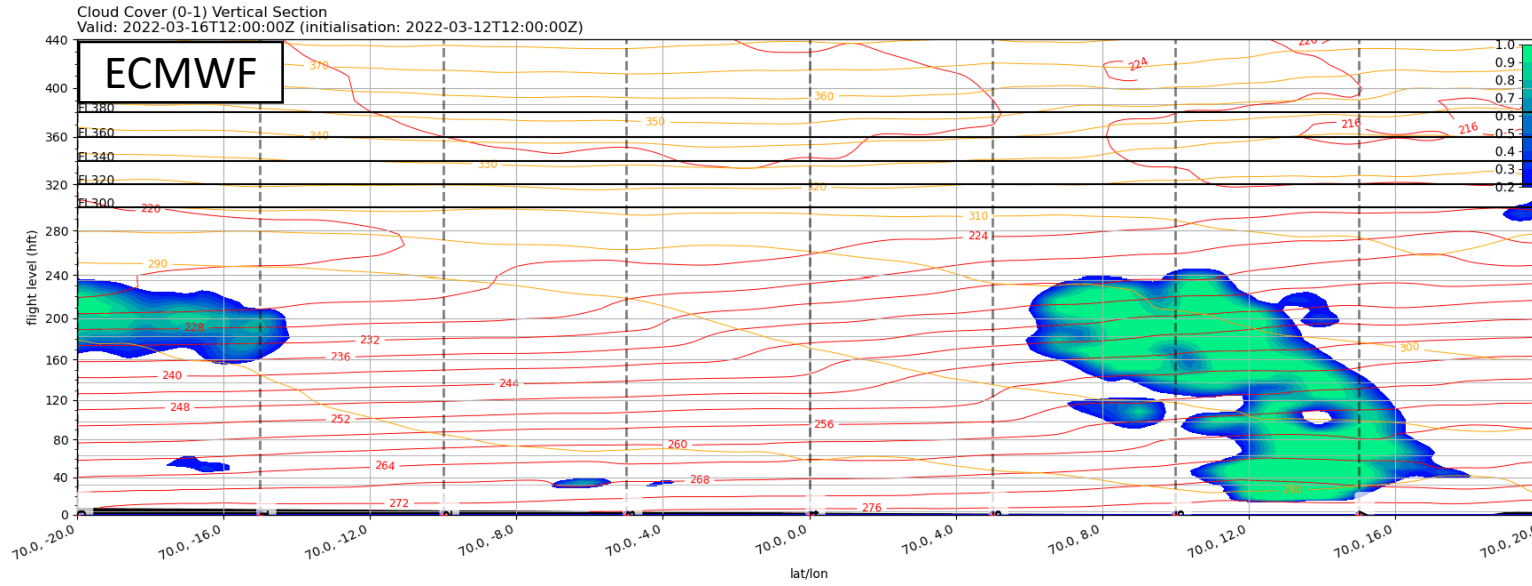
Wed, 2022-03-16 12 UTC



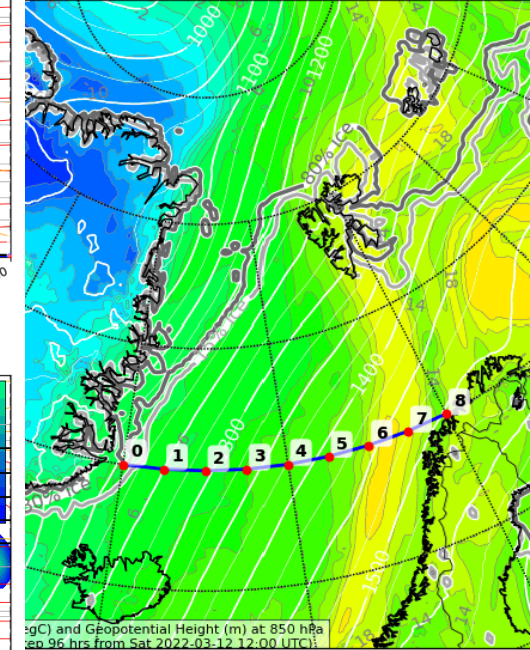
Wed, 2022-03-16 18 UTC



# Wed, 2022-03-16 12 UTC: Clouds



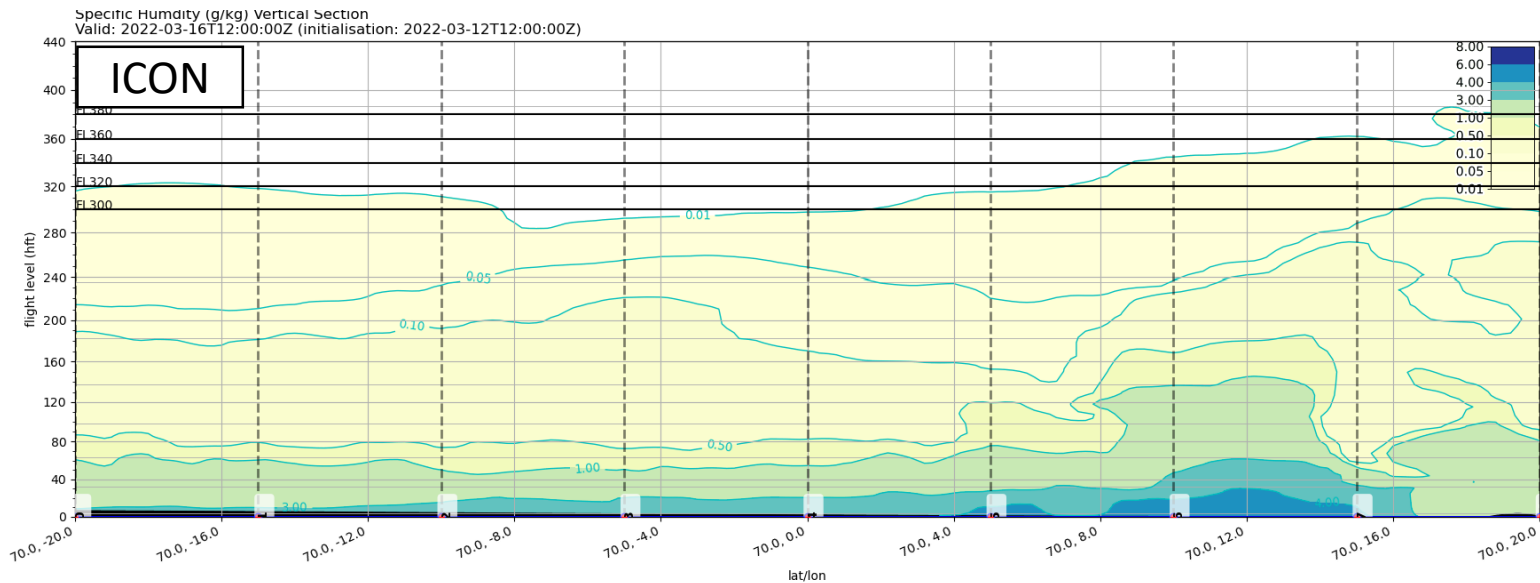
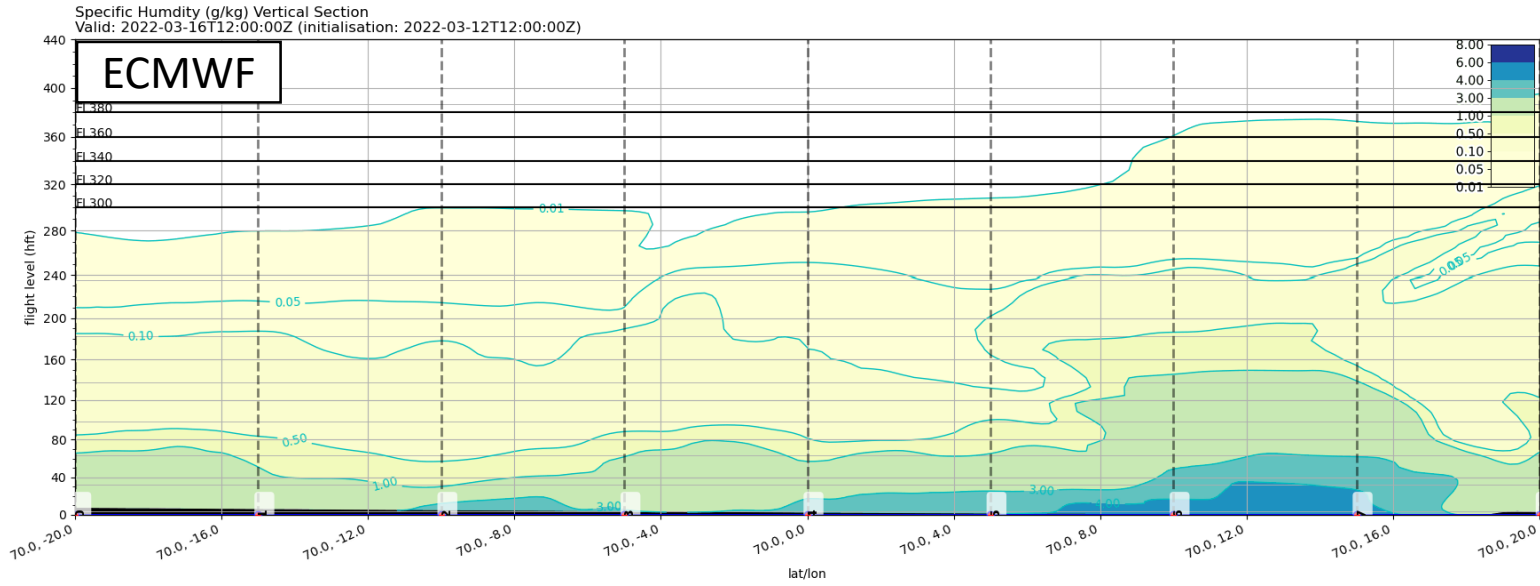
Potential (degC) and Geopotential Height (m) at 850 hPa  
Valid: 2022-03-16T12:00:00Z (initialisation: 2022-03-12T12:00:00Z)



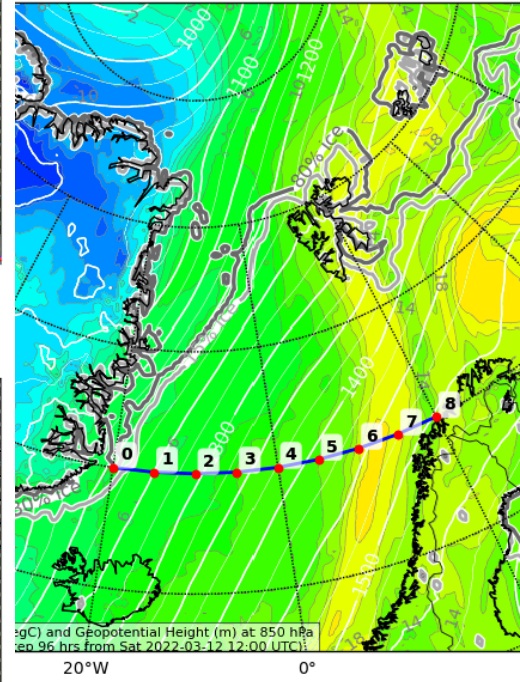
Potential (degC) and Geopotential Height (m) at 850 hPa  
Valid: 2022-03-16T12:00:00Z (initialisation: 2022-03-12T12:00:00Z)



# Wed, 2022-03-16 12 UTC: Specific humidity

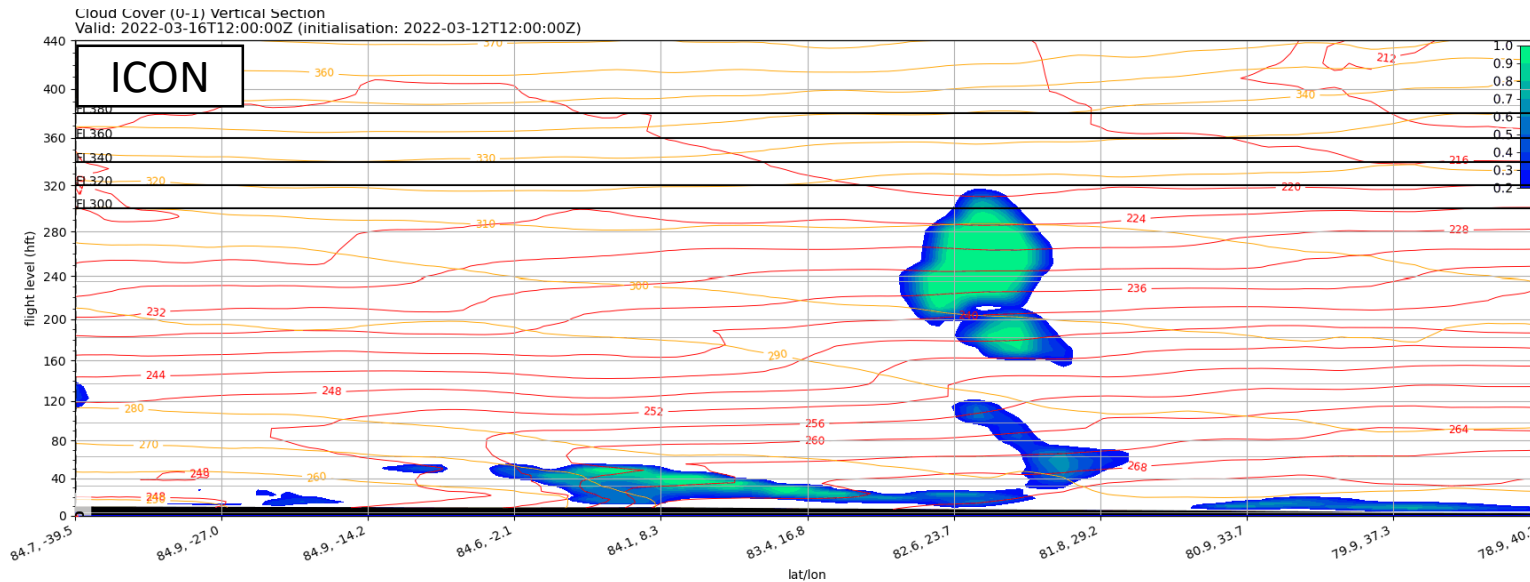
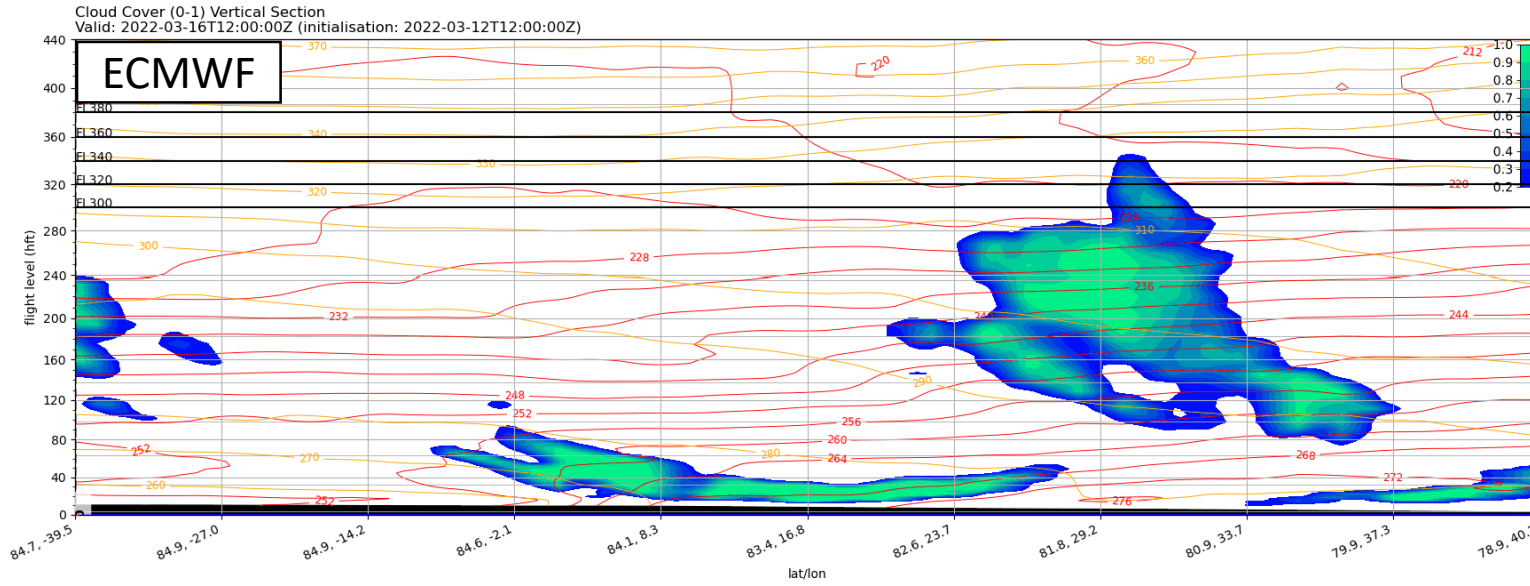


Potential (degC) and Geopotential Height (m) at 850 hPa  
Valid: 2022-03-16T12:00:00Z (initialisation: 2022-03-12T12:00:00Z)

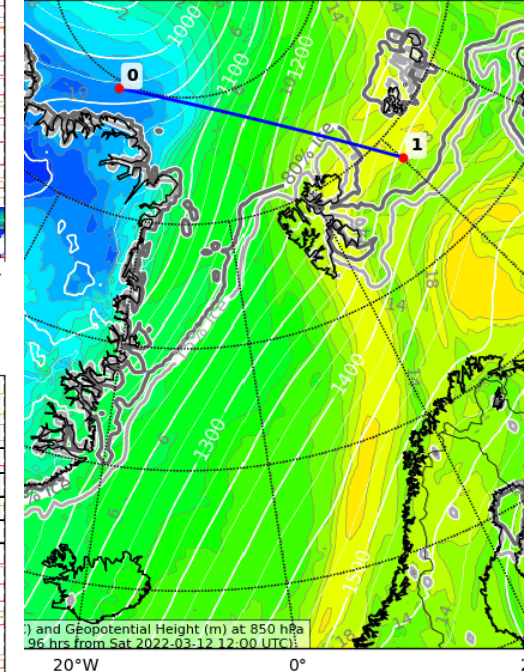


Potential (degC) and Geopotential Height (m) at 850 hPa  
Valid: 2022-03-16T12:00:00Z (initialisation: 2022-03-12T12:00:00Z)

# Wed, 2022-03-16 12 UTC: Clouds

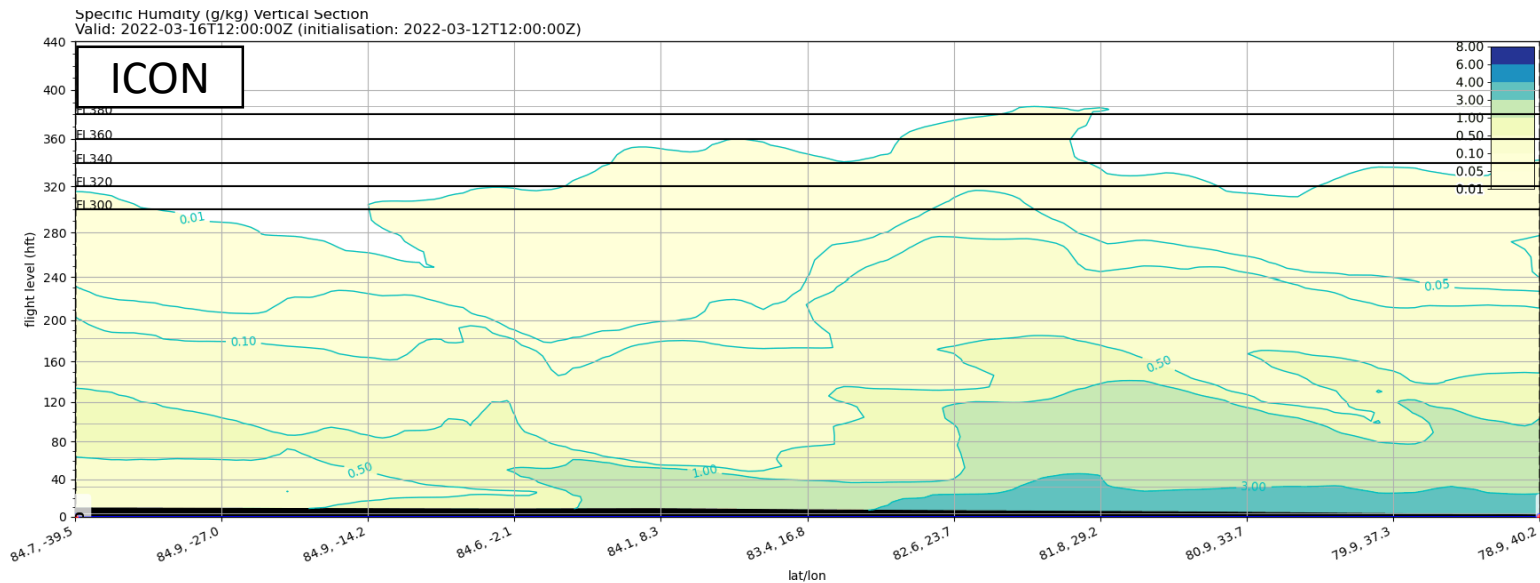
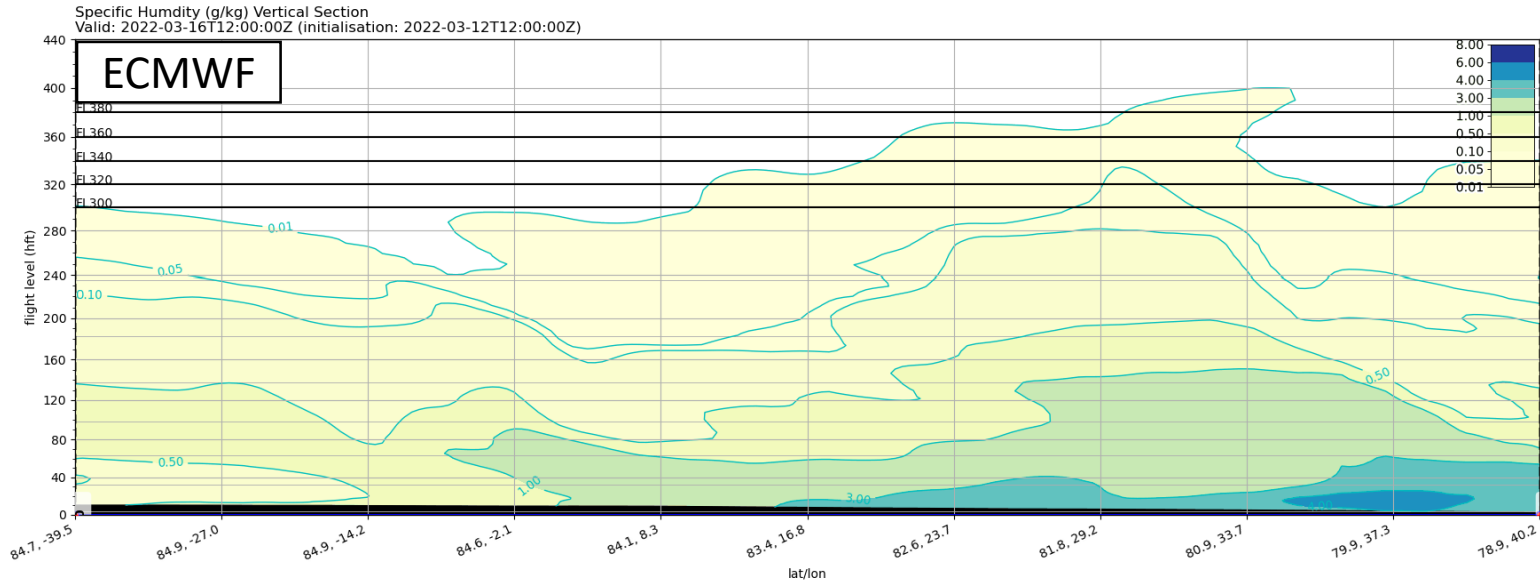


Temperature (degC) and Geopotential Height (m) at 850 hPa  
Valid: 2022-03-16T12:00:00Z (initialisation: 2022-03-12T12:00:00Z)

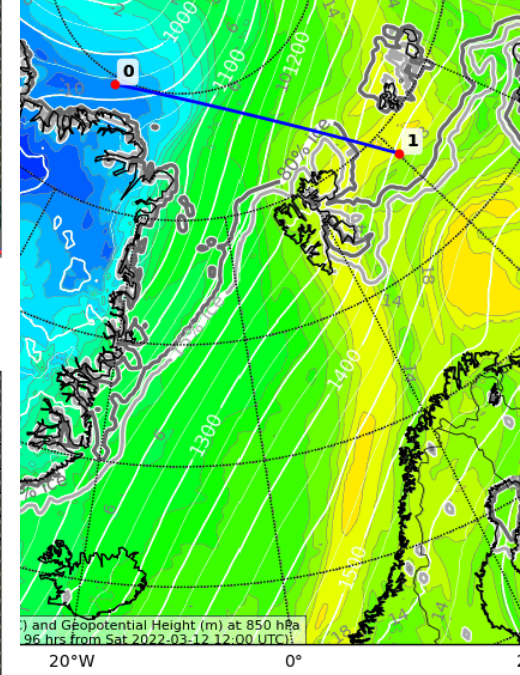


Temperature (degC) and Geopotential Height (m) at 850 hPa  
96 hrs from Sat 2022-03-12 12:00 UTC

# Wed, 2022-03-16 12 UTC: Specific humidity



Temperature (degC) and Geopotential Height (m) at 850 hPa  
Valid: 2022-03-16T12:00:00Z (initialisation: 2022-03-12T12:00:00Z)



Temperature (degC) and Geopotential Height (m) at 850 hPa  
Valid: 2022-03-16T12:00:00Z (initialisation: 2022-03-12T12:00:00Z)

# Summary

## Summary: Weather Update 2022-03-13, 09:00 LT

- **Tuesday, 2022-03-15:**

- High over NW Russia a bit less strong
  - Slightly weaker winds over Barents Sea and eastern North Atlantic
- Intrusion (Atmos. River) slightly curved
- Head of Atmos. River slightly less broad

- **Wednesday, 2022-03-16:**

- Old Atmos. River more curved than in prev. Forecast
- Apart from that: No significant changes