

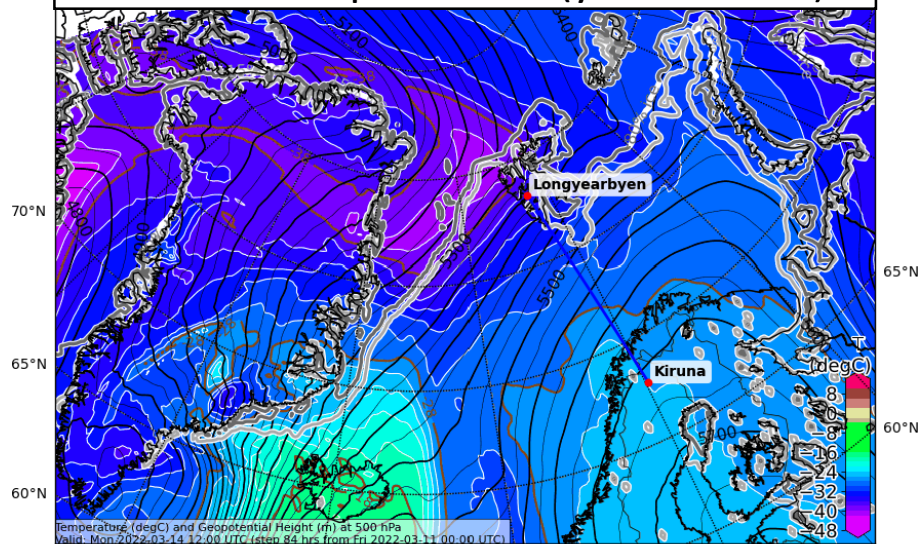
# Weather update HALO-(AC)<sup>3</sup>

Saturday, 2022-03-12, 09:00 LT

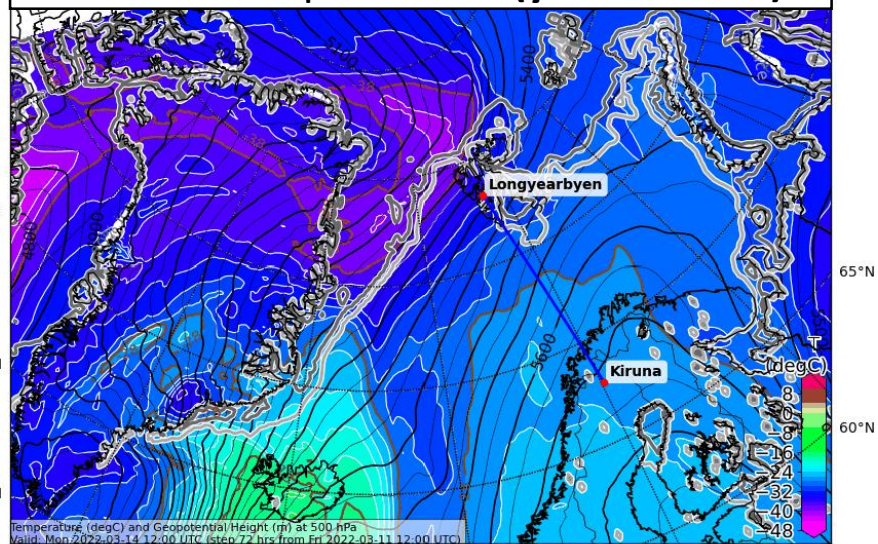
## **Forecast comparison yesterday 00 UTC vs. 12 UTC**

Mon, 2022-03-14 12 UTC (+72h)

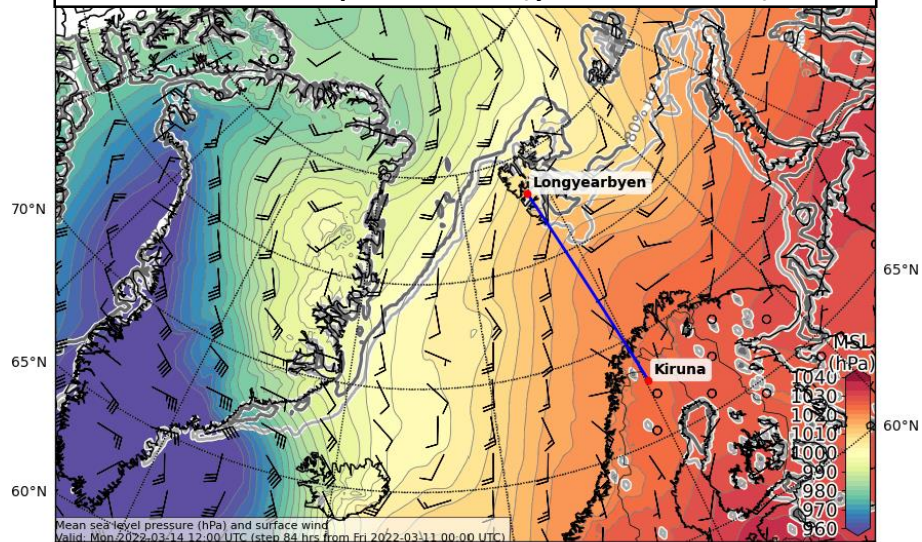
500 hPa Geopot. and T (yest. 00 UTC)



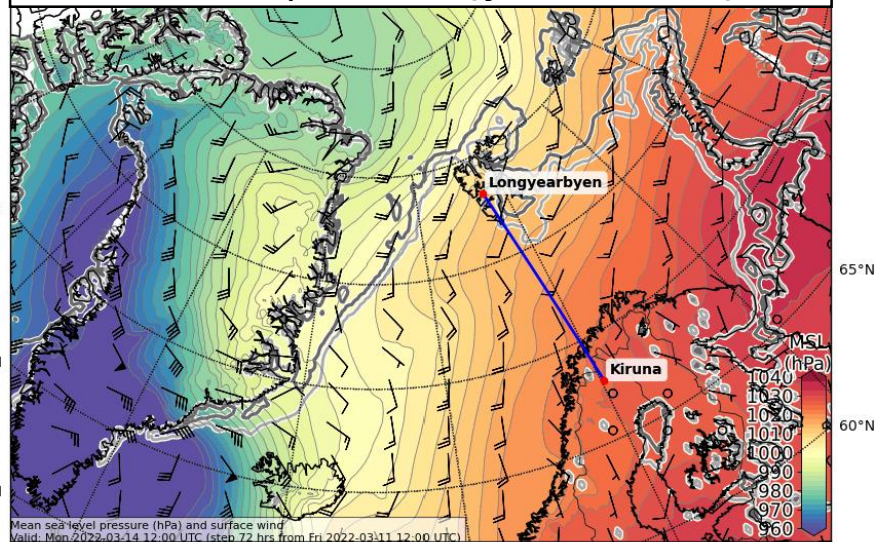
500 hPa Geopot. and T (yest. 12 UTC)



Sea level pressure (yest. 00UTC)



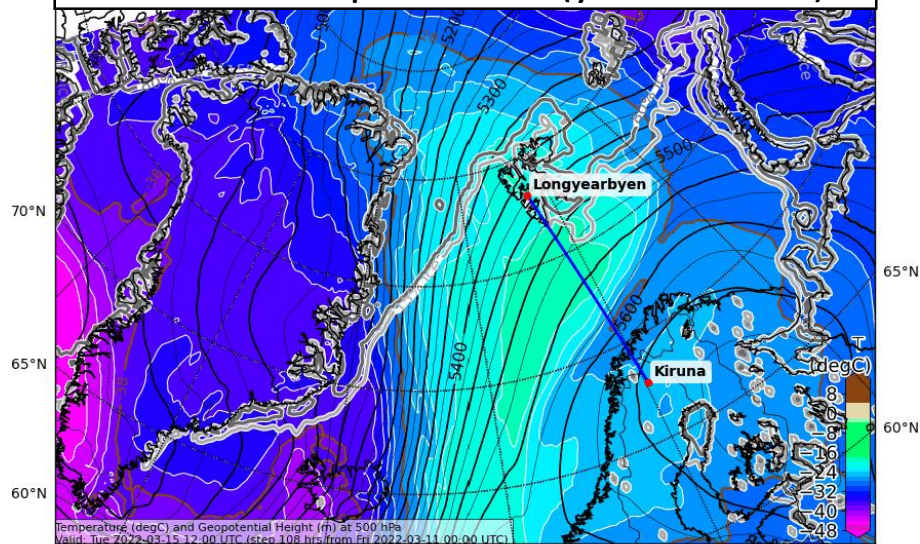
Sea level pressure (yest. 12 UTC)



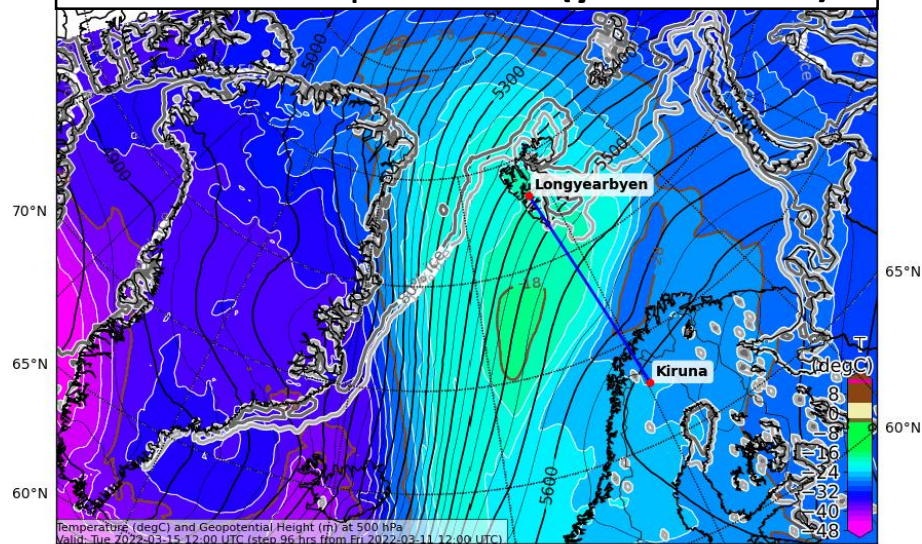


Tue, 2022-03-15 12 UTC (+96h)

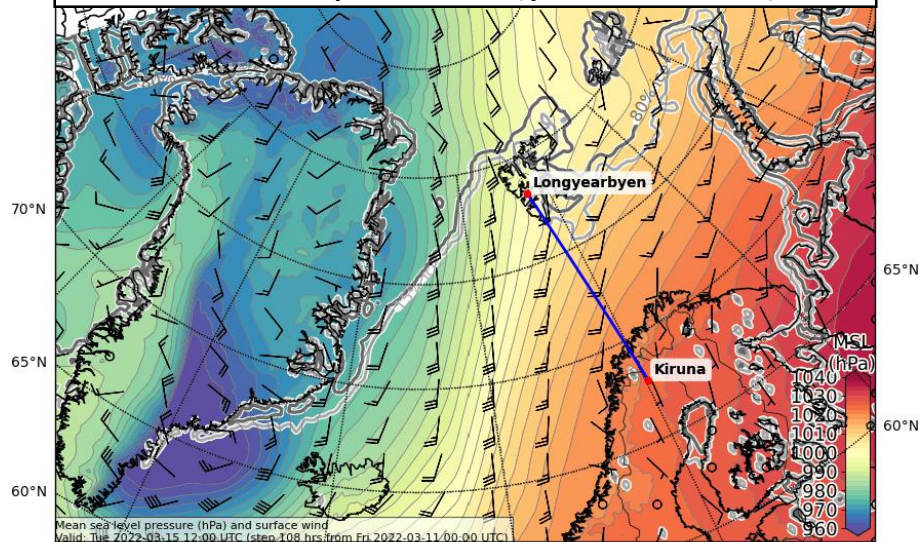
500 hPa Geopot. and T (yest. 00 UTC)



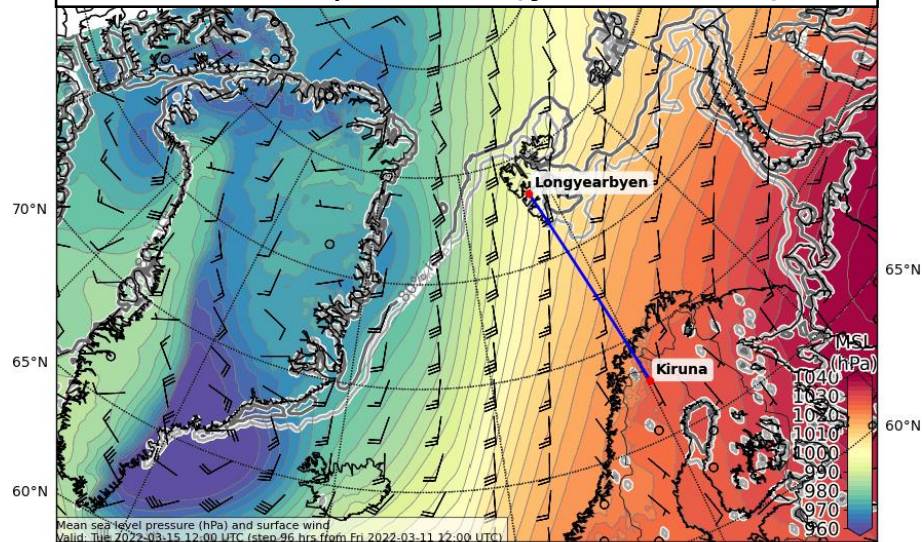
500 hPa Geopot. and T (yest. 12 UTC)



Sea level pressure (yest. 00 UTC)



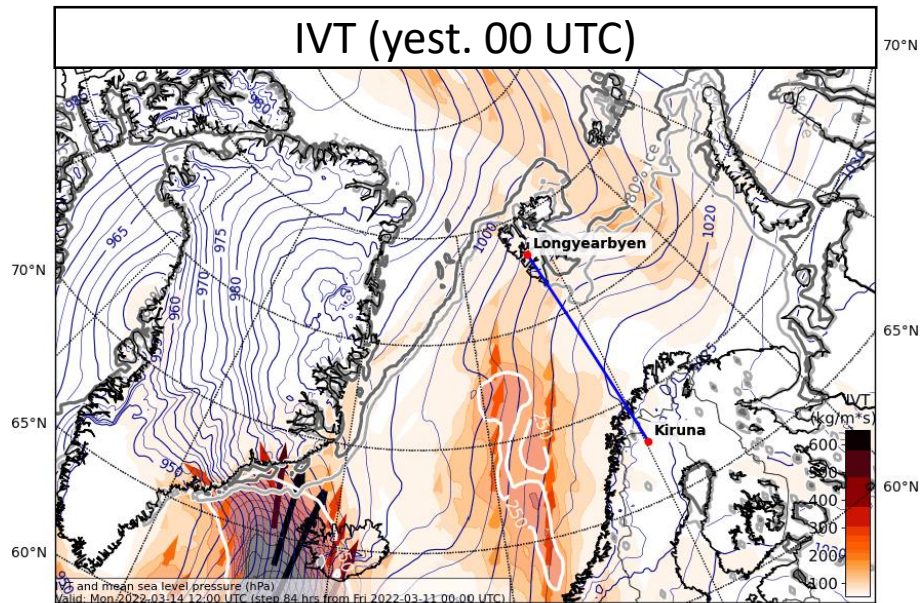
Sea level pressure (yest. 12 UTC)



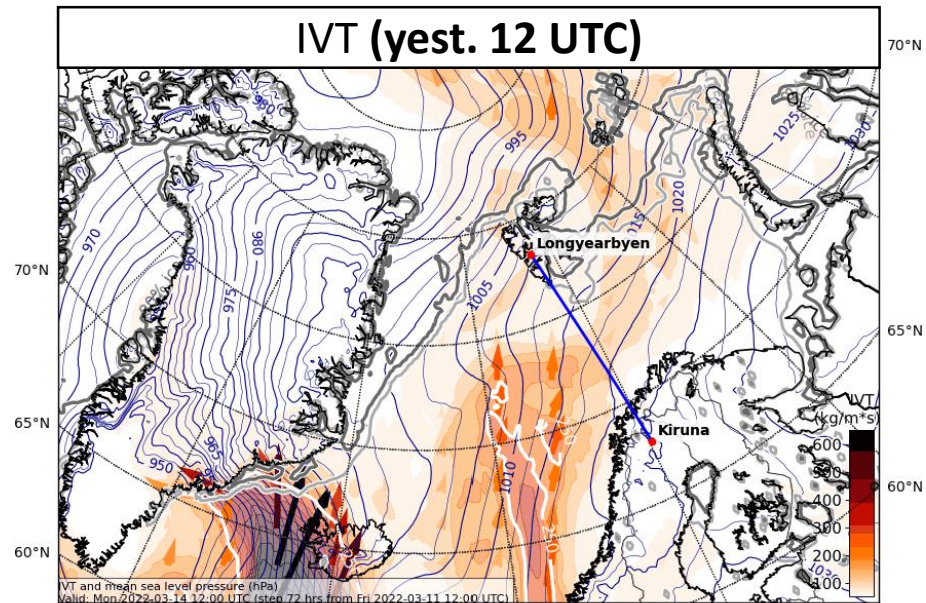


# Mon, 2022-03-14 12 UTC (+72h)

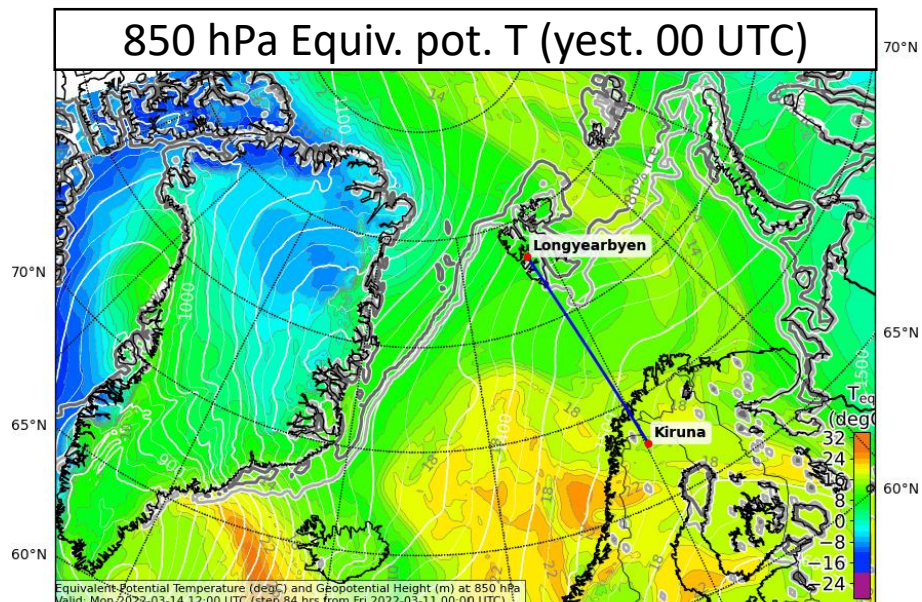
## IVT (yest. 00 UTC)



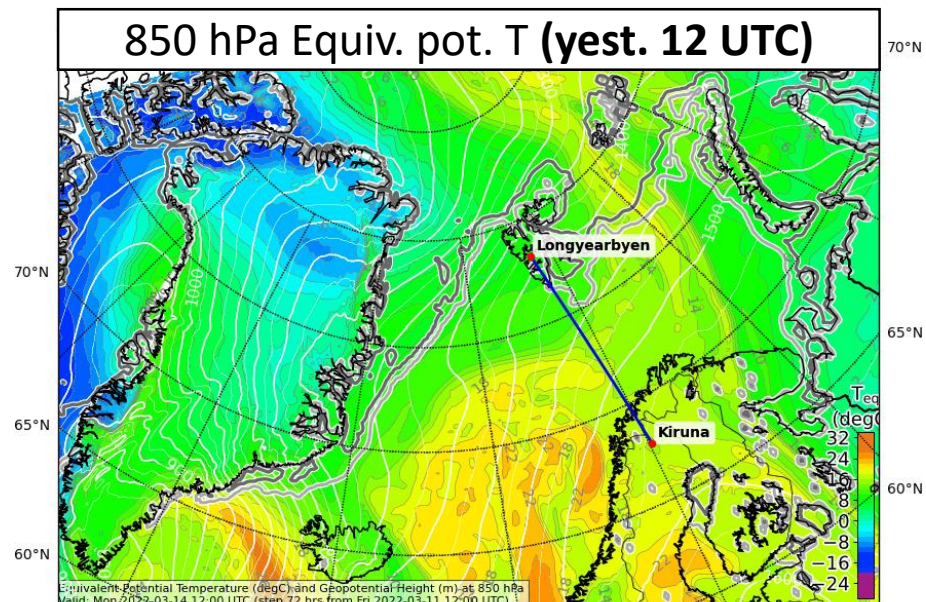
## IVT (yest. 12 UTC)



## 850 hPa Equiv. pot. T (yest. 00 UTC)

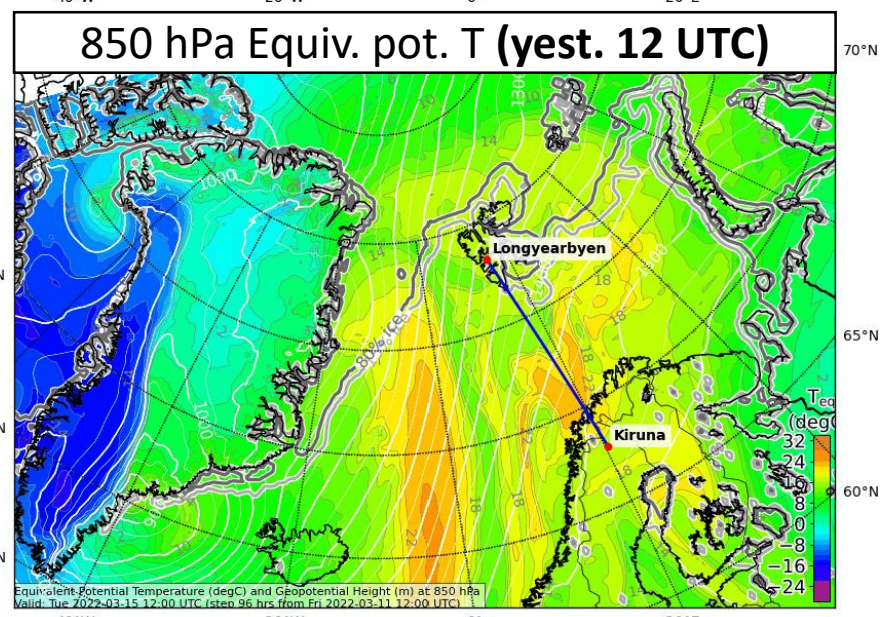
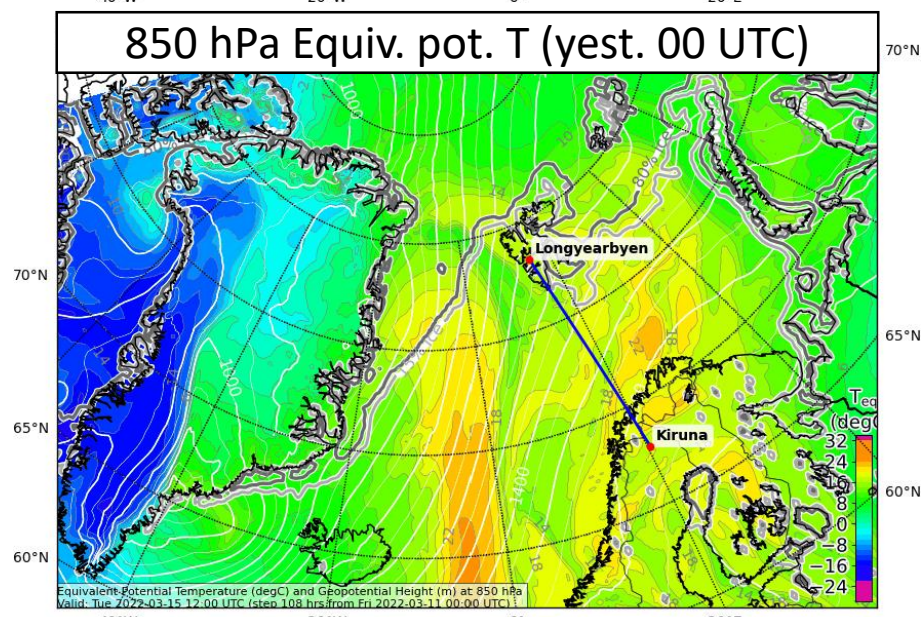
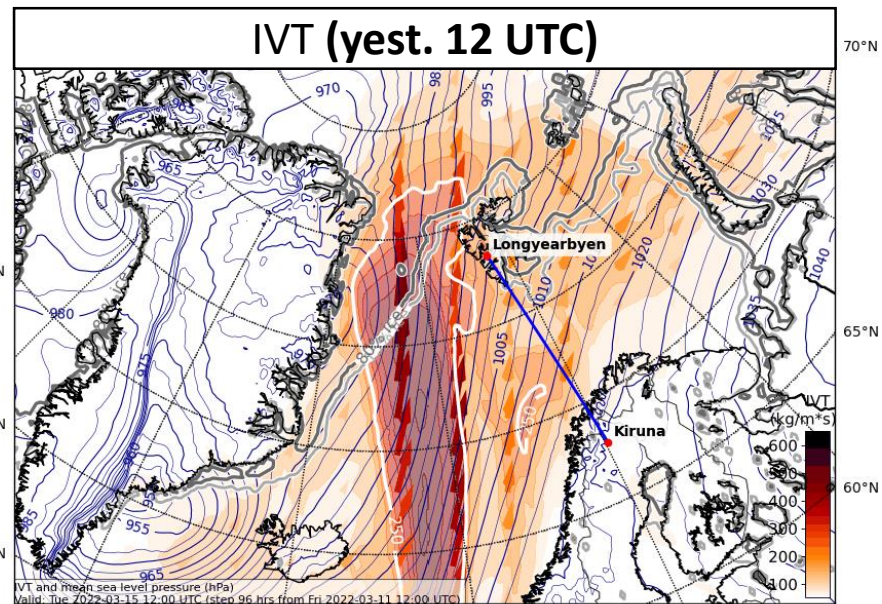
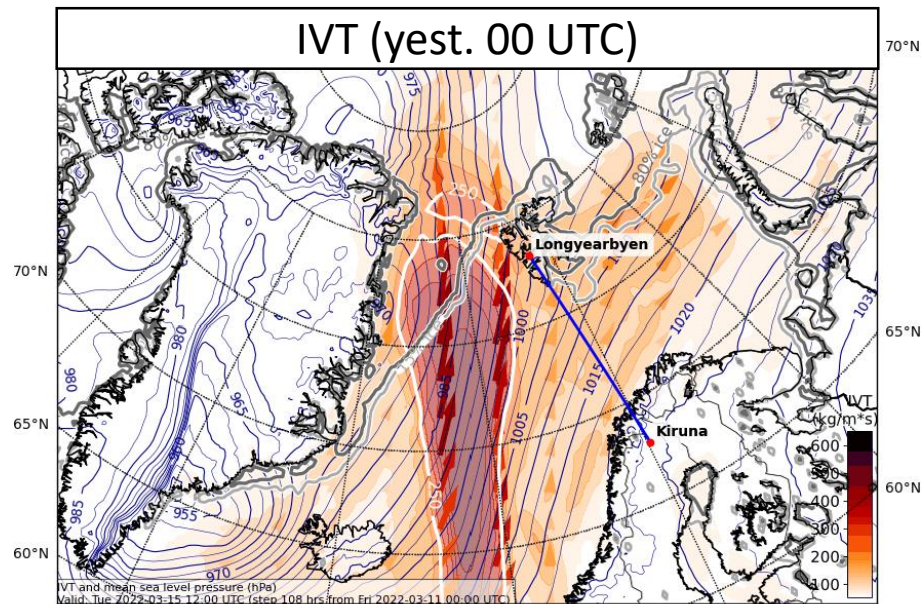


## 850 hPa Equiv. pot. T (yest. 12 UTC)





Tue, 2022-03-13 12 UTC (+96h)



## **Detailed outlook for Monday & Tuesday**

2022-03-11 12 UTC: 66 – 102h

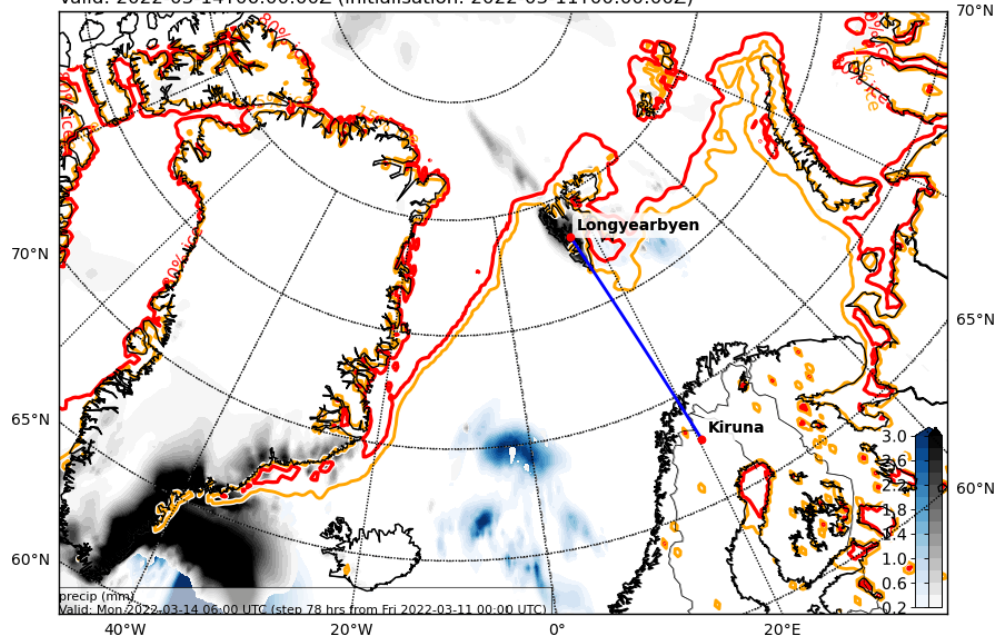
Precip & Low cloud cover

Total cloud cover

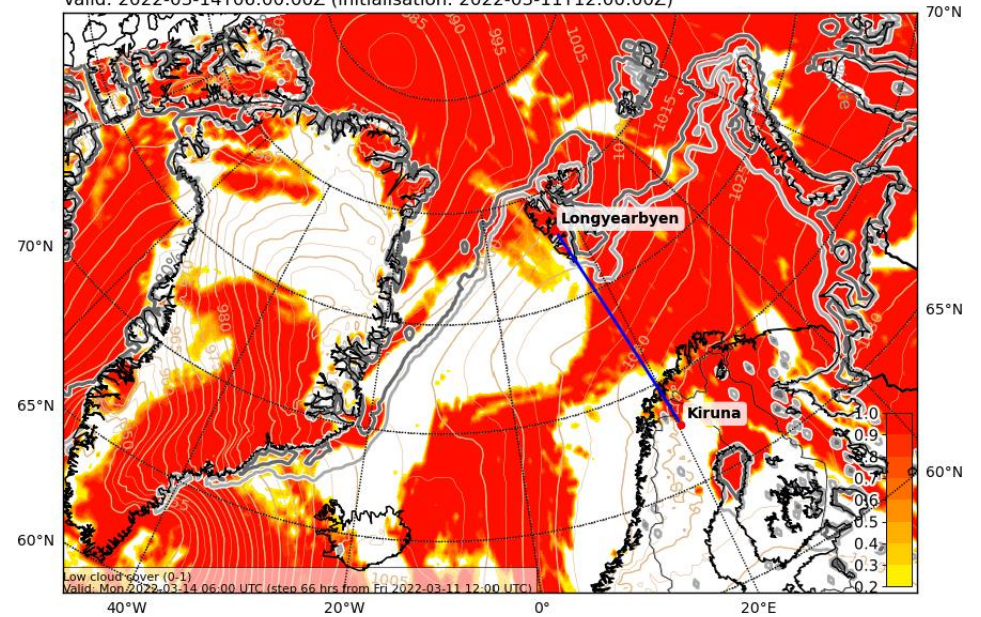


# Mon, 2022-03-14 06 UTC

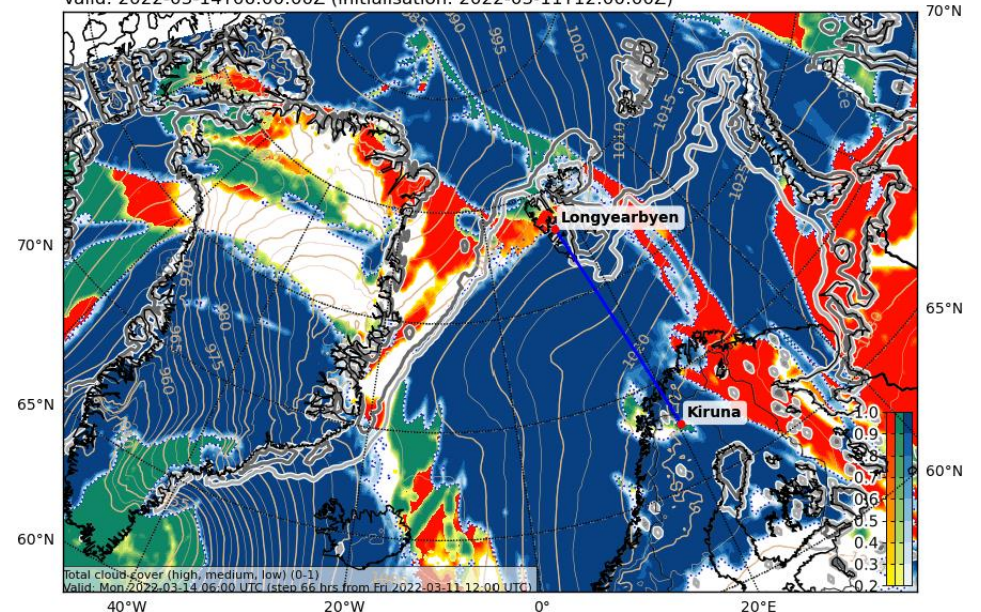
Precipitation, instantaneous (mm water eq.). Rain-blue, snow-black  
Valid: 2022-03-14T06:00:00Z (initialisation: 2022-03-11T00:00:00Z)



Cloud Cover (0-1) and Mean Sea Level Pressure (hPa) ( LOW )  
Valid: 2022-03-14T06:00:00Z (initialisation: 2022-03-11T12:00:00Z)



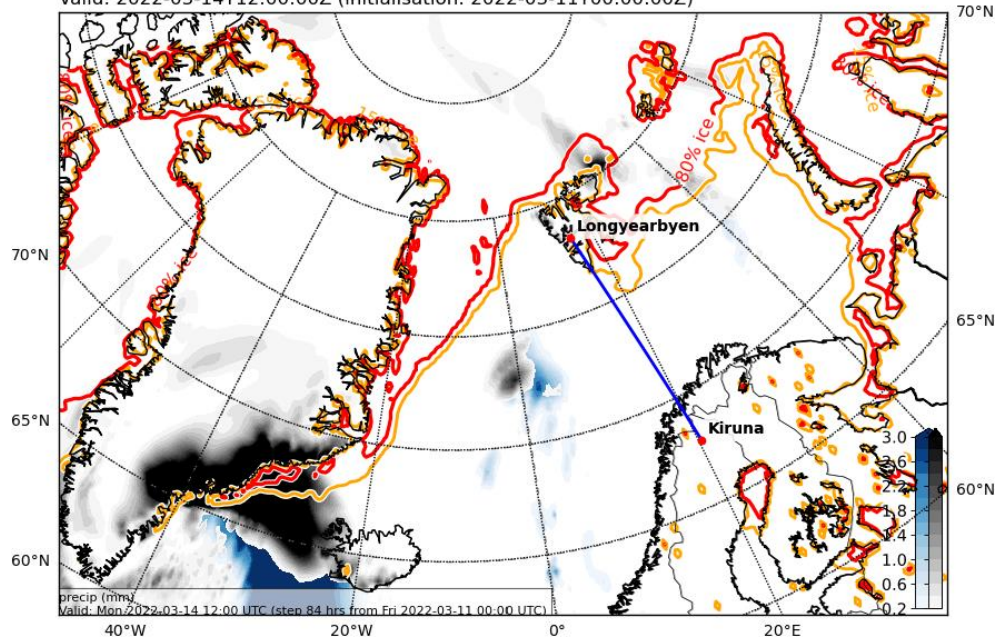
Cloud Cover (0-1) and Mean Sea Level Pressure (hPa) ( TOT )  
Valid: 2022-03-14T06:00:00Z (initialisation: 2022-03-11T12:00:00Z)



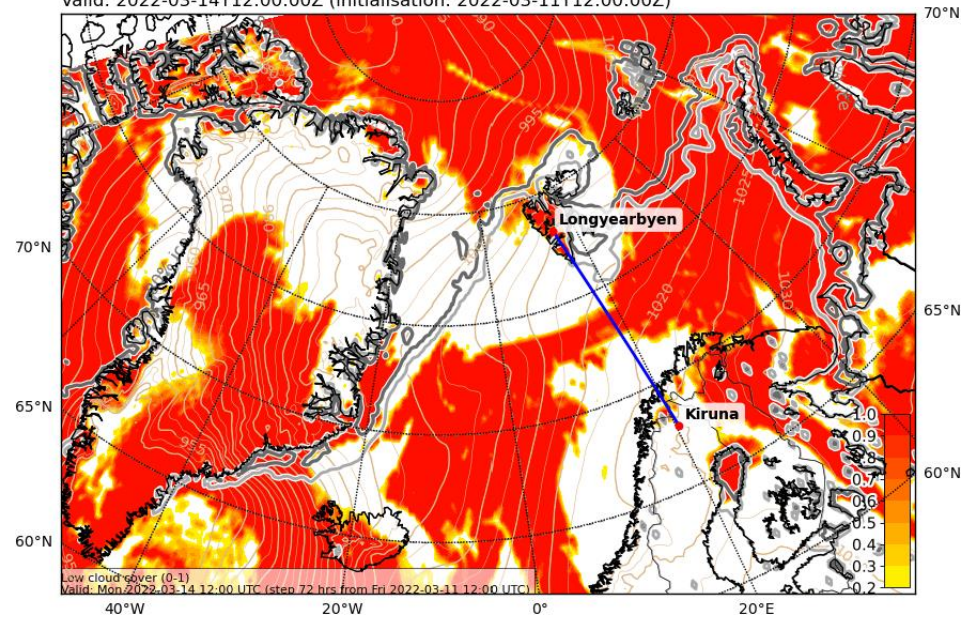


# Mon, 2022-03-14 12 UTC

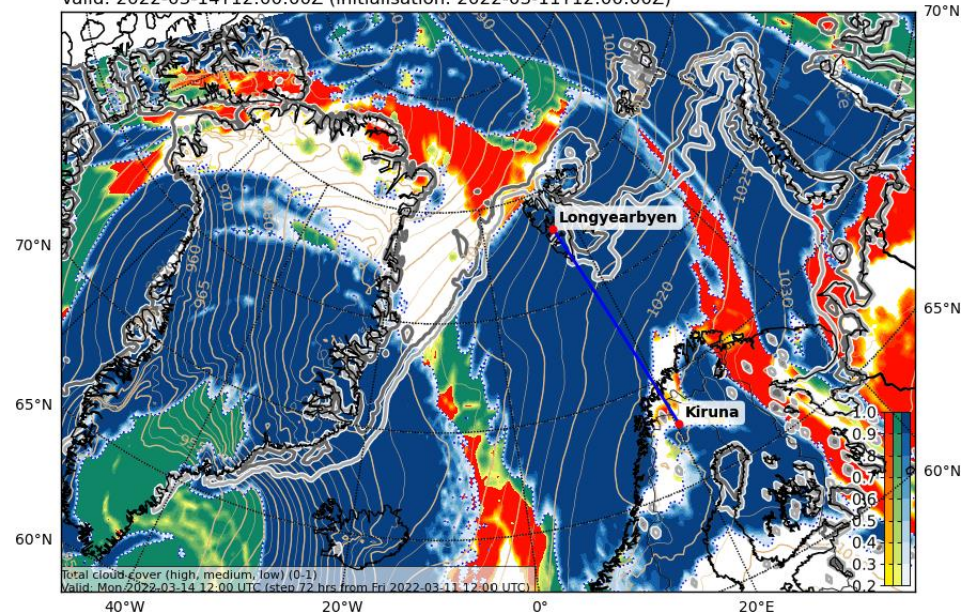
Precipitation, instantaneous (mm water eq.). Rain-blue, snow-black  
Valid: 2022-03-14T12:00:00Z (initialisation: 2022-03-11T00:00:00Z)



Cloud Cover (0-1) and Mean Sea Level Pressure (hPa) ( LOW )  
Valid: 2022-03-14T12:00:00Z (initialisation: 2022-03-11T12:00:00Z)



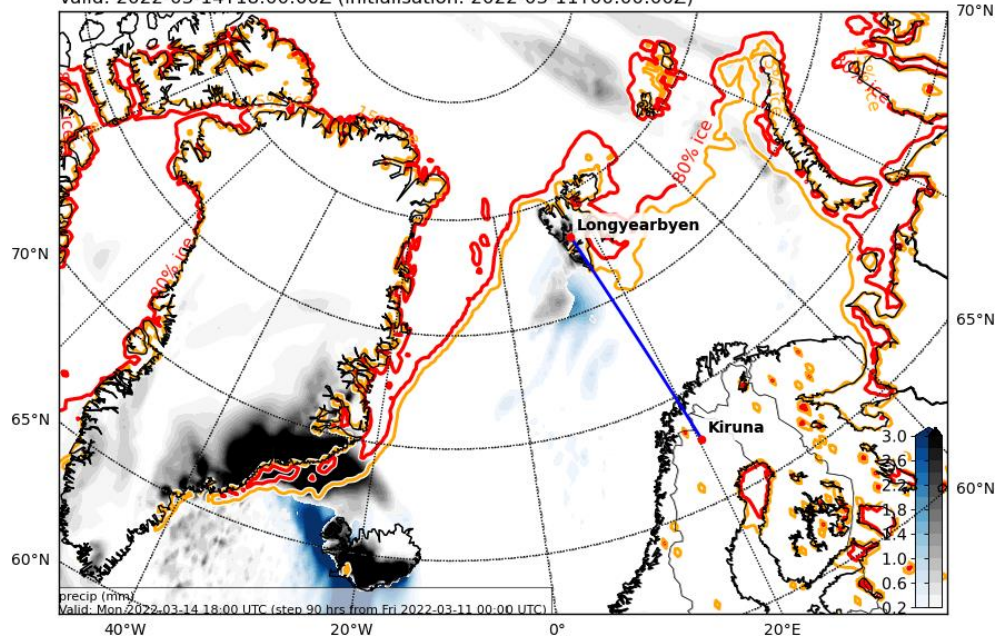
Cloud Cover (0-1) and Mean Sea Level Pressure (hPa) ( TOT )  
Valid: 2022-03-14T12:00:00Z (initialisation: 2022-03-11T12:00:00Z)





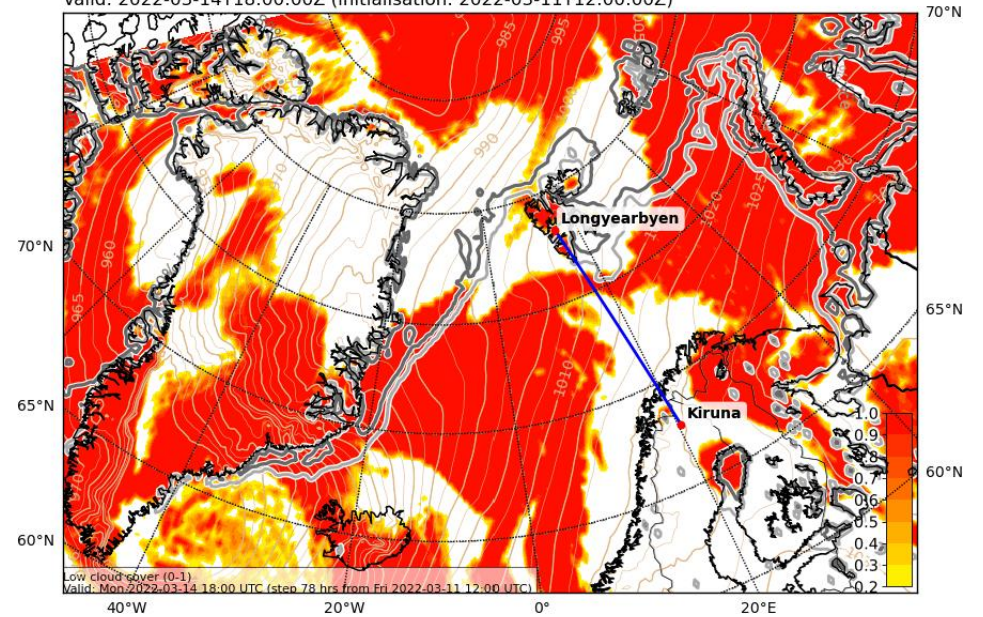
# Mon, 2022-03-14 18 UTC

Precipitation, instantaneous (mm water eq.). Rain-blue, snow-black  
Valid: 2022-03-14T18:00:00Z (initialisation: 2022-03-11T00:00:00Z)



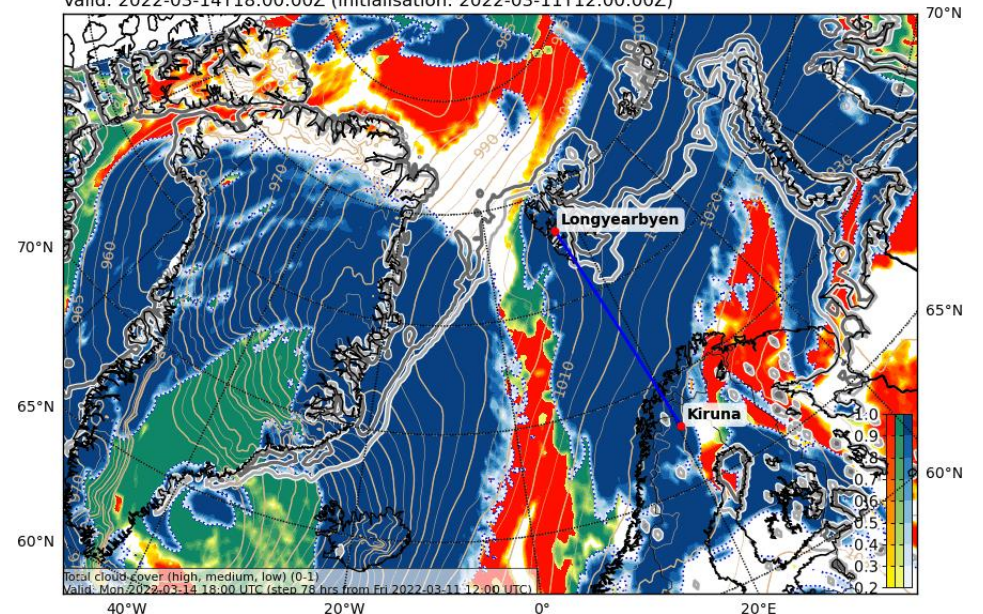
Cloud Cover (0-1) and Mean Sea Level Pressure (hPa) ( LOW )

Valid: 2022-03-14T18:00:00Z (initialisation: 2022-03-11T12:00:00Z)



Cloud Cover (0-1) and Mean Sea Level Pressure (hPa) ( TOT )

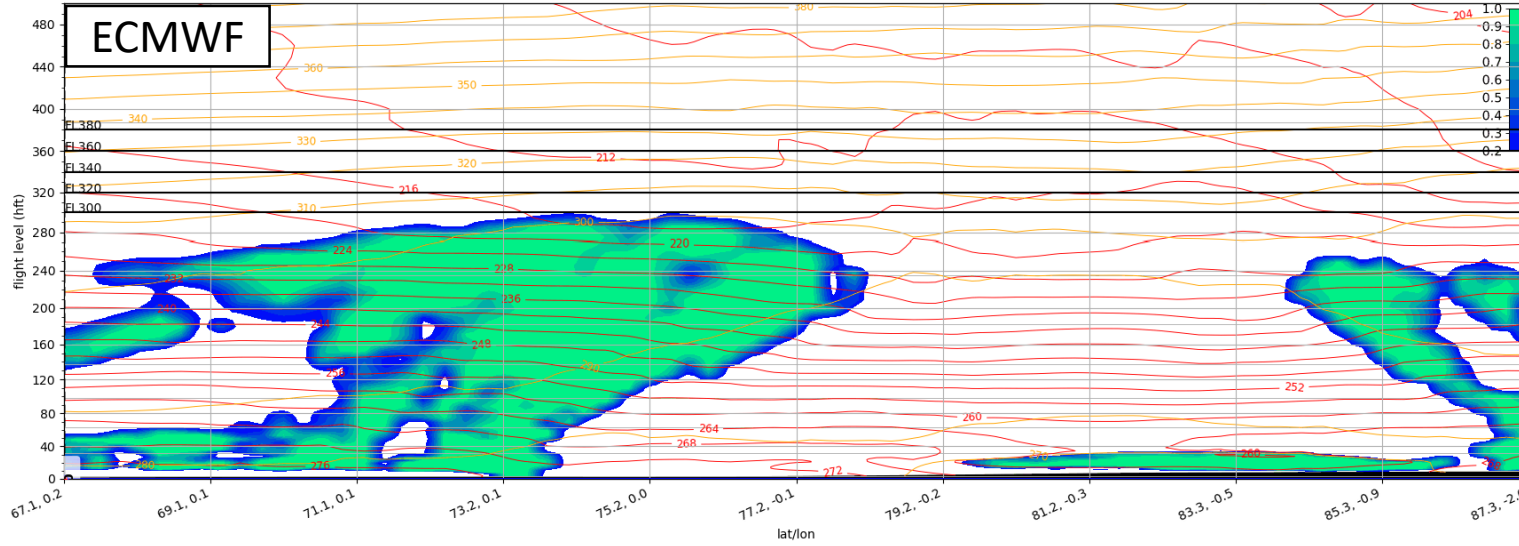
Valid: 2022-03-14T18:00:00Z (initialisation: 2022-03-11T12:00:00Z)



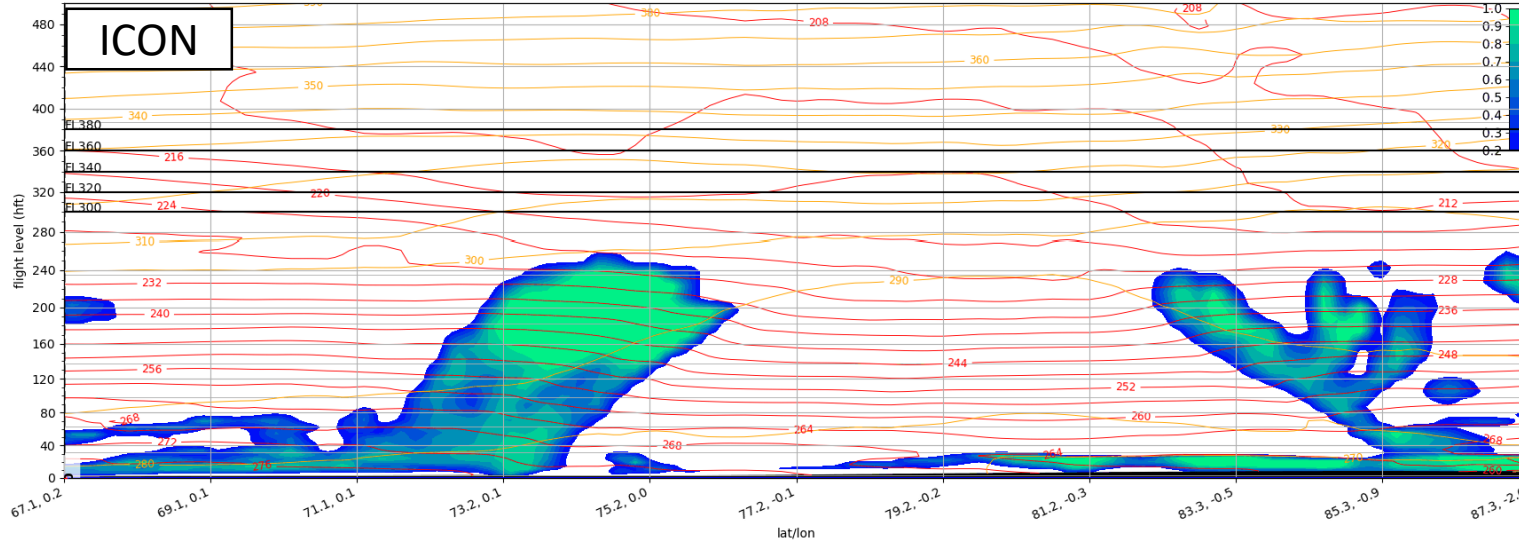


# Mon, 2022-03-14 12 UTC

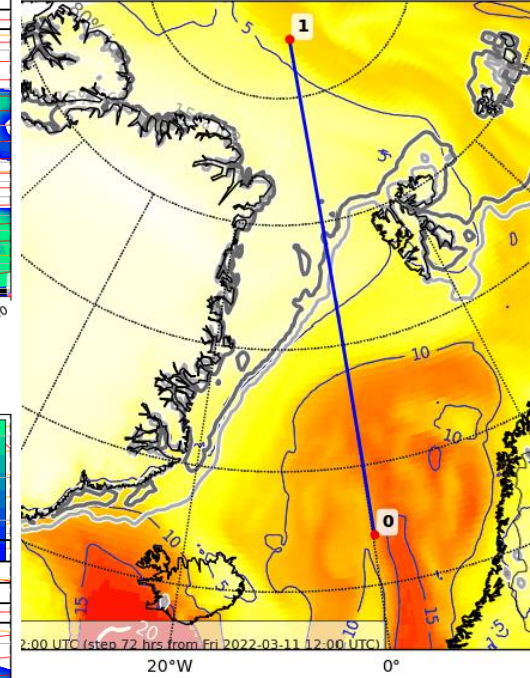
Cloud Cover (0-1) Vertical Section  
Valid: 2022-03-14T12:00:00Z (initialisation: 2022-03-11T12:00:00Z)



Cloud Cover (0-1) Vertical Section  
Valid: 2022-03-14T12:00:00Z (initialisation: 2022-03-12T00:00:00Z)



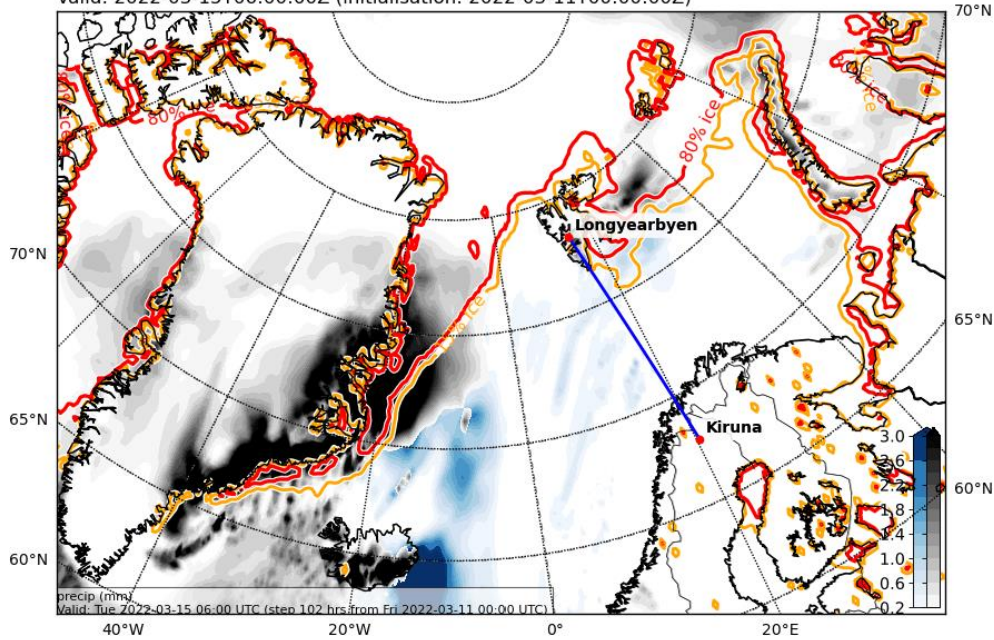
4T12:00:00Z (initialisation: 2022-03-11T12:00:00Z)



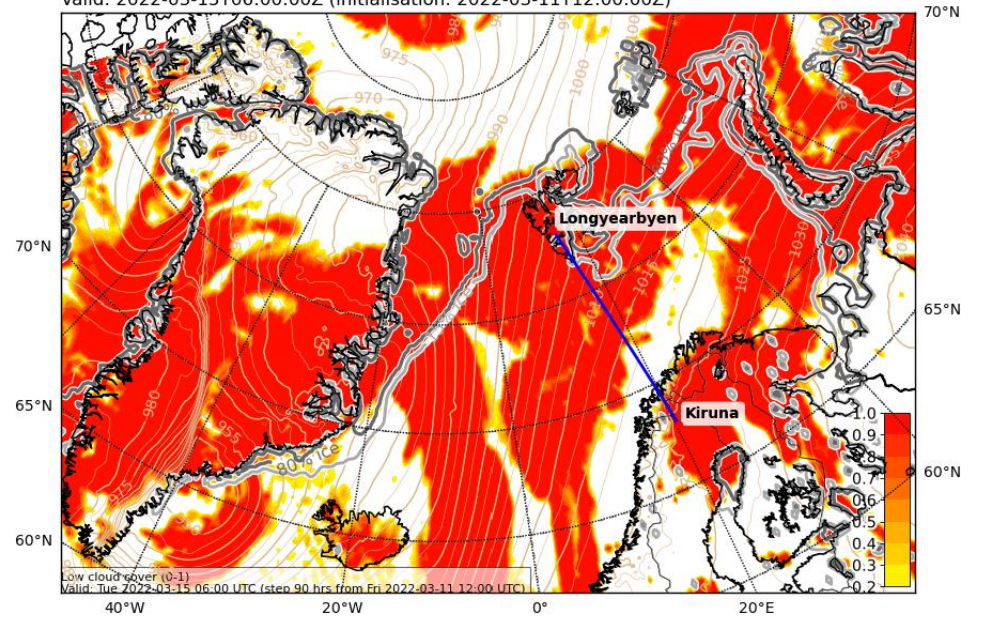


# Tue, 2022-03-15 06 UTC

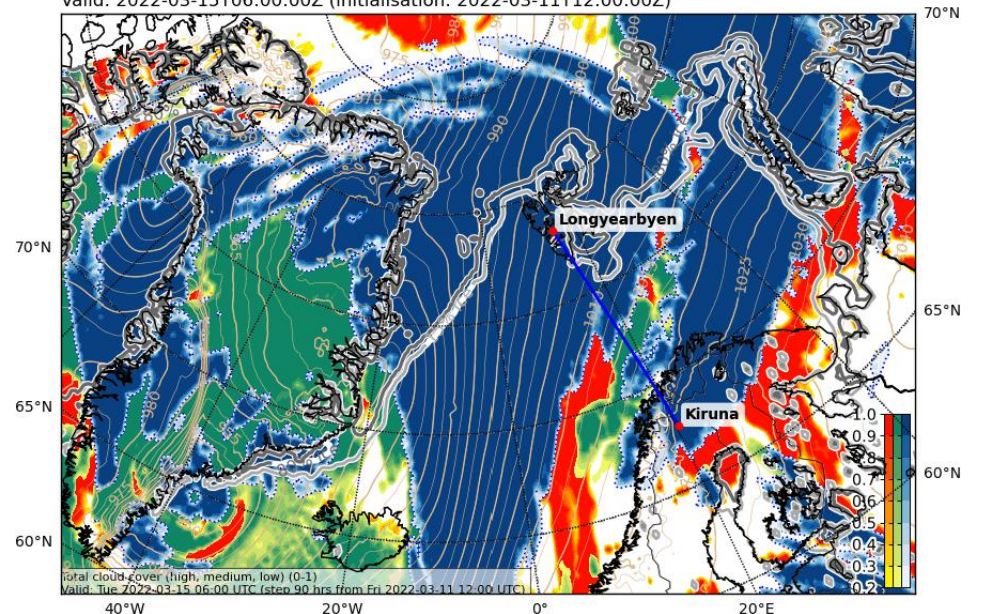
Precipitation, instantaneous (mm water eq.). Rain-blue, snow-black  
Valid: 2022-03-15T06:00:00Z (initialisation: 2022-03-11T00:00:00Z)



Cloud Cover (0-1) and Mean Sea Level Pressure (hPa) ( LOW )  
Valid: 2022-03-15T06:00:00Z (initialisation: 2022-03-11T12:00:00Z)



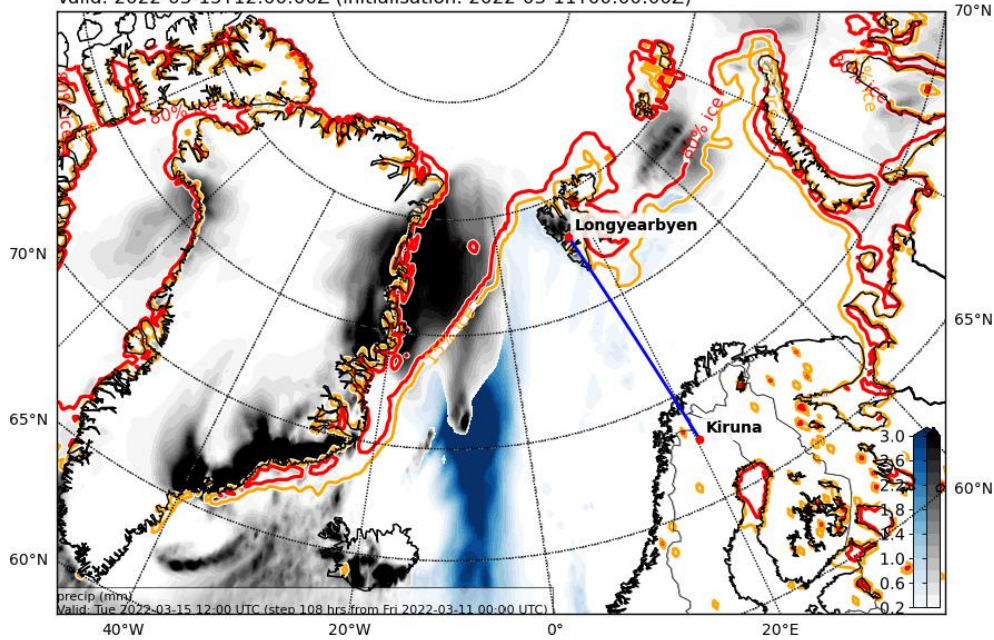
Cloud Cover (0-1) and Mean Sea Level Pressure (hPa) ( TOT )  
Valid: 2022-03-15T06:00:00Z (initialisation: 2022-03-11T12:00:00Z)



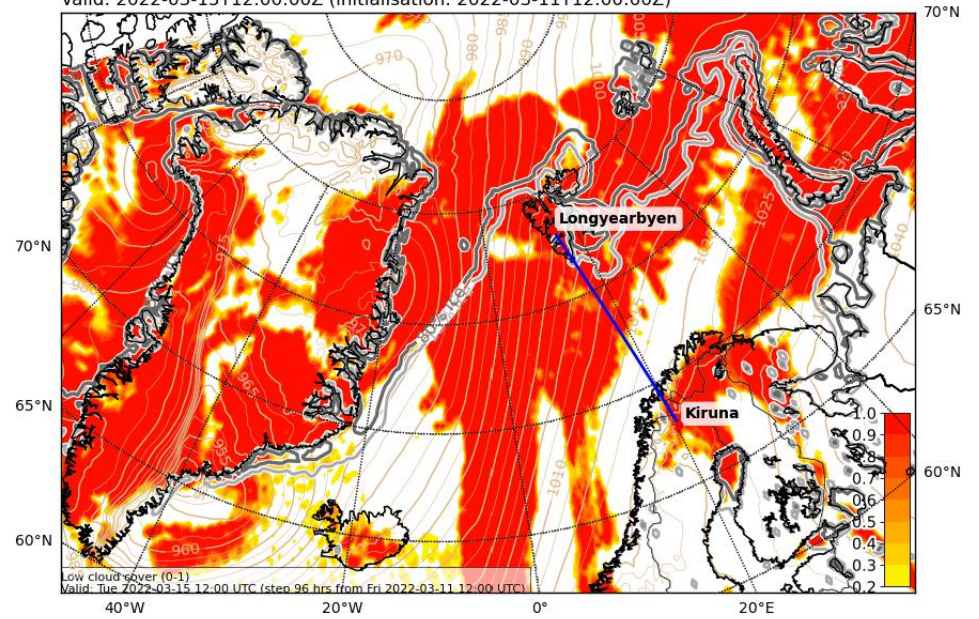


# Tue, 2022-03-15 12 UTC

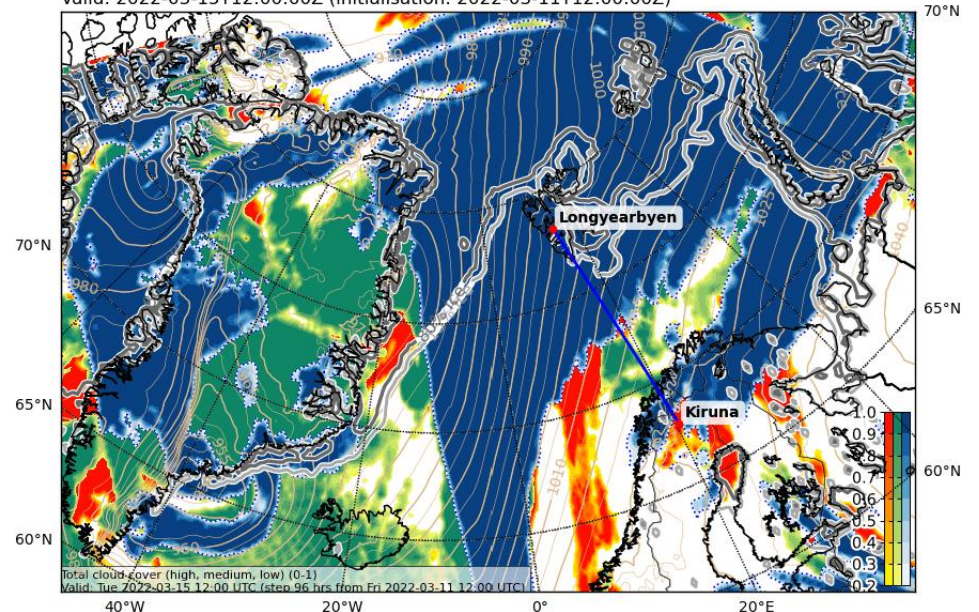
Precipitation, instantaneous (mm water eq.). Rain-blue, snow-black  
Valid: 2022-03-15T12:00:00Z (initialisation: 2022-03-11T00:00:00Z)



Cloud Cover (0-1) and Mean Sea Level Pressure (hPa) ( LOW )  
Valid: 2022-03-15T12:00:00Z (initialisation: 2022-03-11T12:00:00Z)



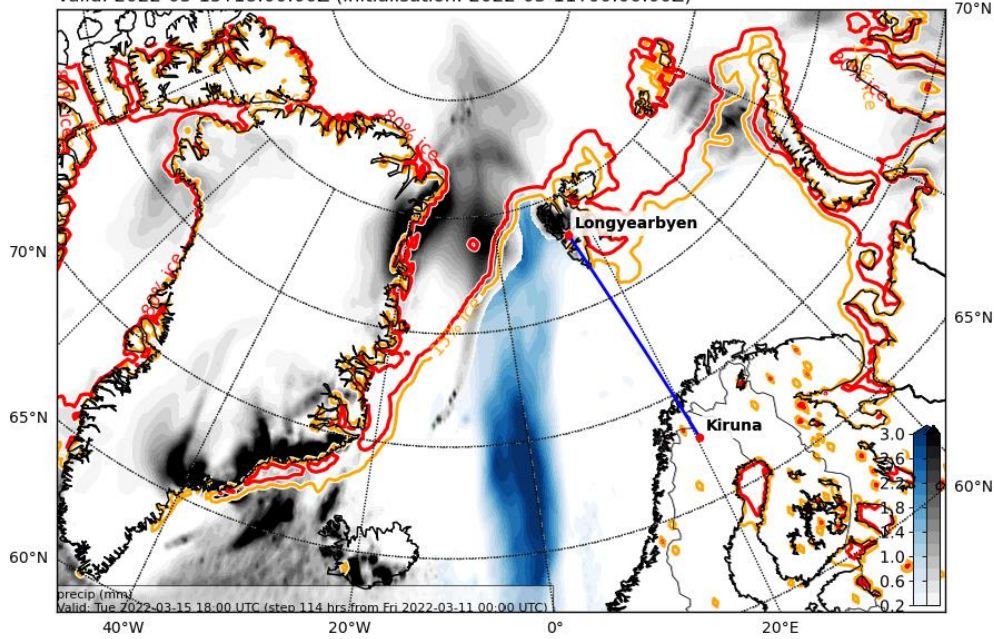
Cloud Cover (0-1) and Mean Sea Level Pressure (hPa) ( TOT )  
Valid: 2022-03-15T12:00:00Z (initialisation: 2022-03-11T12:00:00Z)



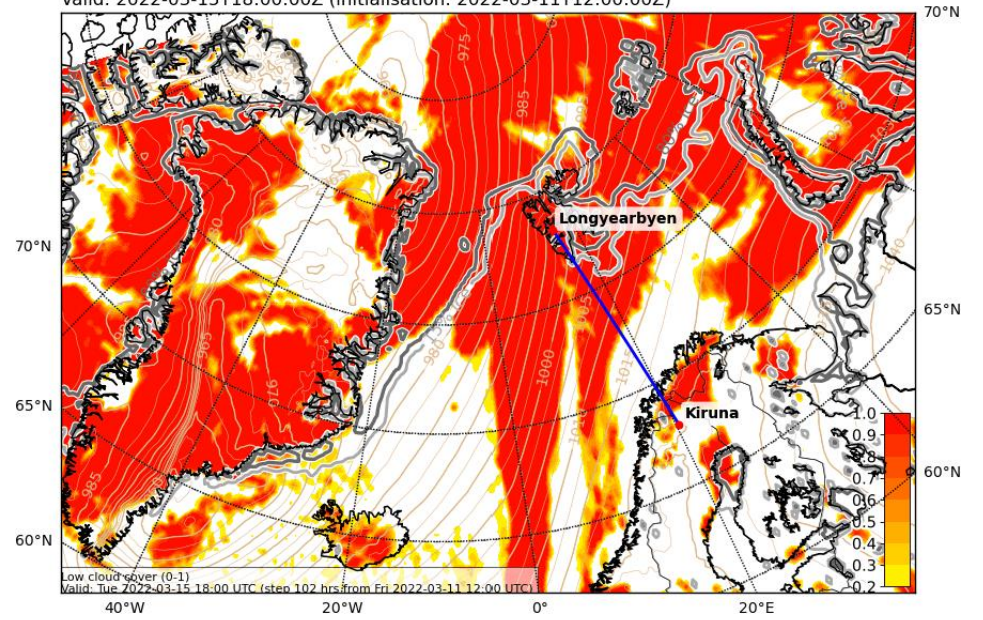


# Tue, 2022-03-15 18 UTC

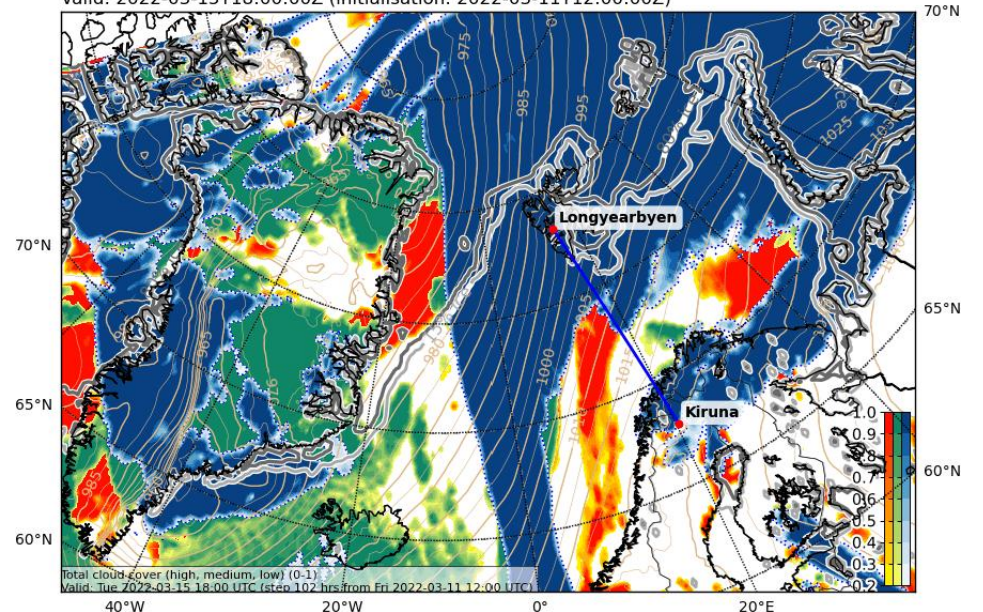
Precipitation, instantaneous (mm water eq.). Rain-blue, snow-black  
Valid: 2022-03-15T18:00:00Z (initialisation: 2022-03-11T00:00:00Z)



Cloud Cover (0-1) and Mean Sea Level Pressure (hPa) ( LOW )  
Valid: 2022-03-15T18:00:00Z (initialisation: 2022-03-11T12:00:00Z)



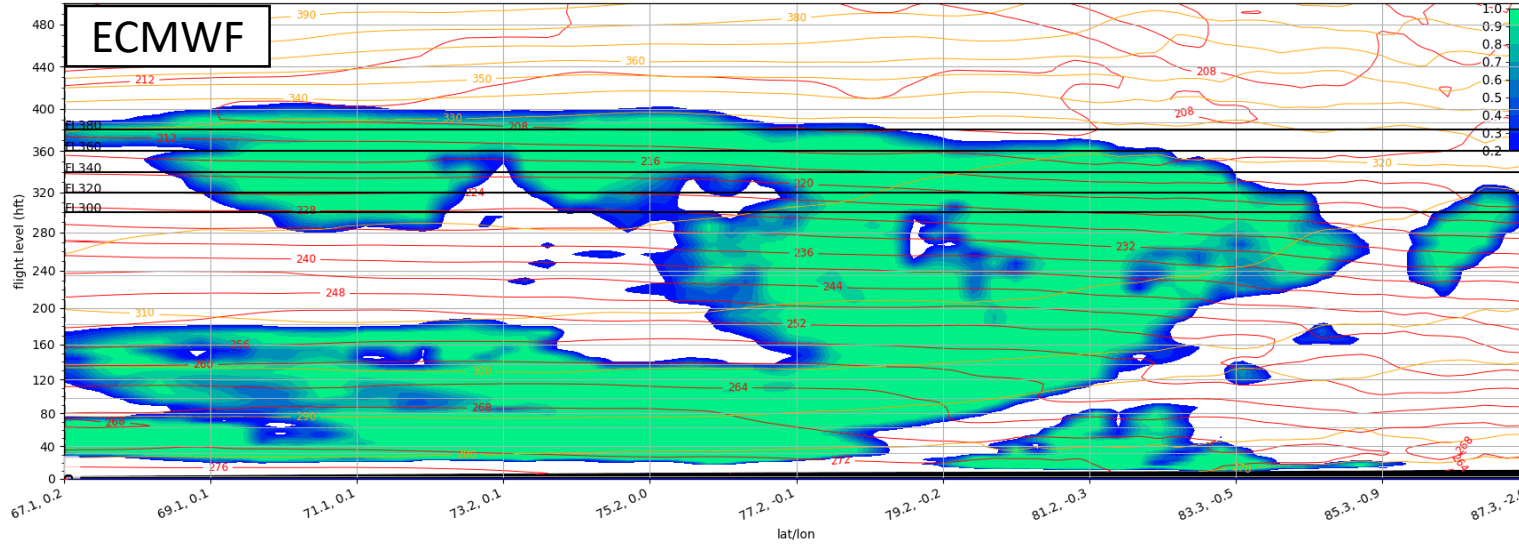
Cloud Cover (0-1) and Mean Sea Level Pressure (hPa) ( TOT )  
Valid: 2022-03-15T18:00:00Z (initialisation: 2022-03-11T12:00:00Z)



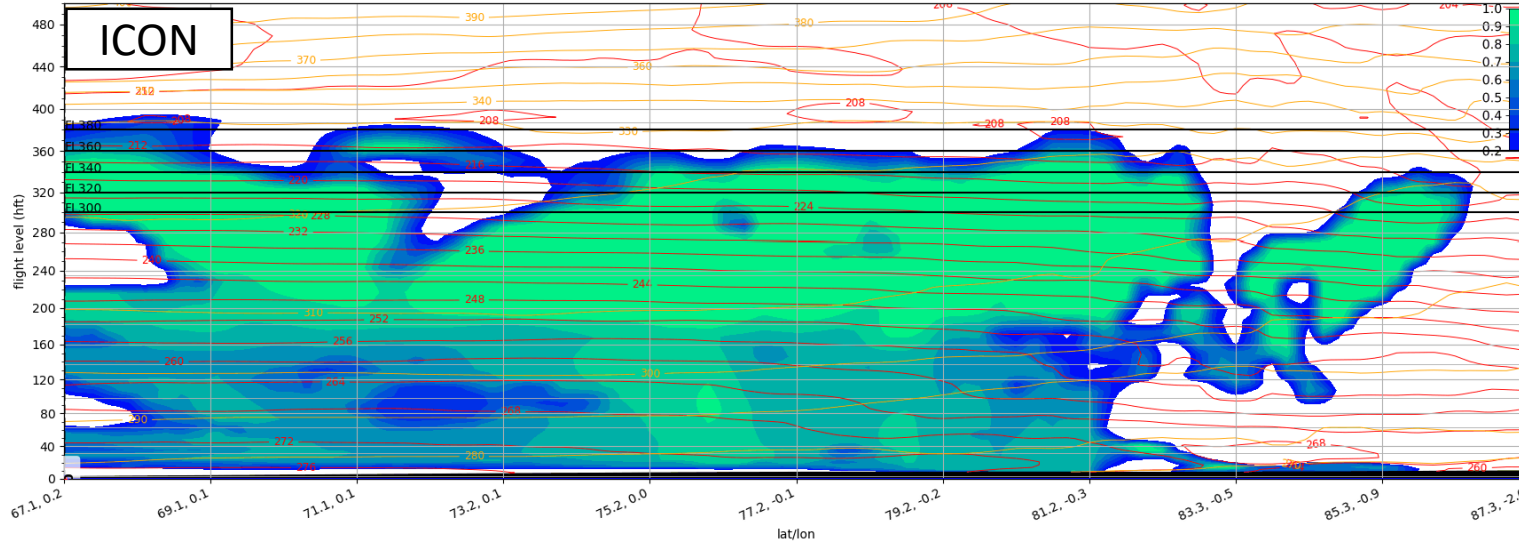


# Tue, 2022-03-15 12 UTC

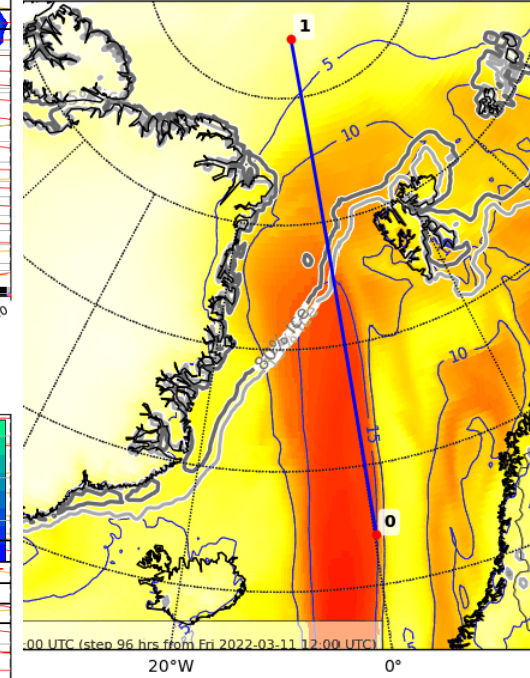
Cloud Cover (0-1) Vertical Section  
Valid: 2022-03-15T12:00:00Z (initialisation: 2022-03-11T12:00:00Z)



Cloud Cover (0-1) Vertical Section  
Valid: 2022-03-15T12:00:00Z (initialisation: 2022-03-12T00:00:00Z)



5T12:00:00Z (initialisation: 2022-03-11T12:00:00Z)





# Summary



## Summary: Weather Update 2022-03-12, 09:00 LT

- **Monday, 2022-03-14:**

- Similar pressure and geopotential fields as in previous run
- Svalbard surrounded by IVT
- Secondary low in North Atlantic still present

- **Tuesday, 2022-03-15:**

- IVT narrower in its northern part; second local maximum close to Norway
- Heavy precip (snow and rain) over Northern Atlantic and western Fram Strait  
→ In the evening: also eastern Fram Strait and Svalbard
- Cloud top is about FL400 in both ICON and ECMWF