

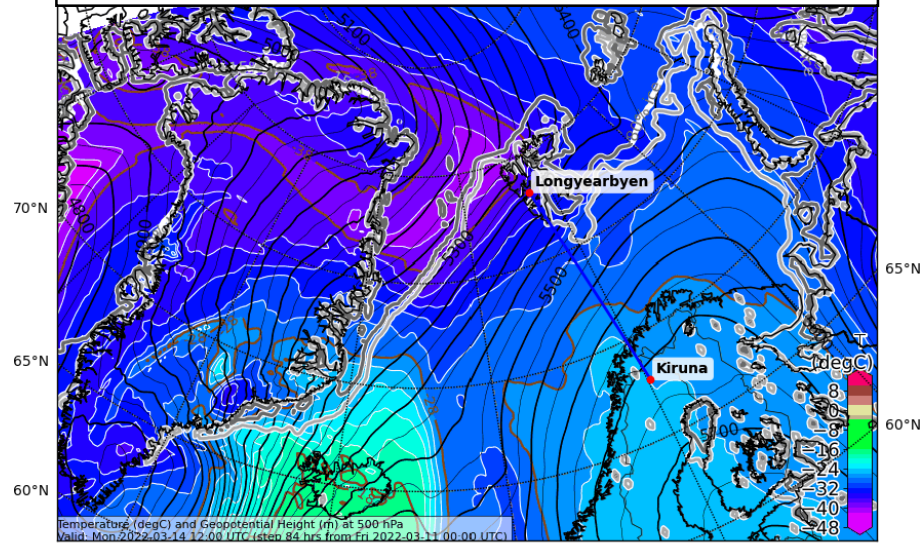
Weather update HALO-(AC)³

Saturday, 2022-03-12, 09:00 LT

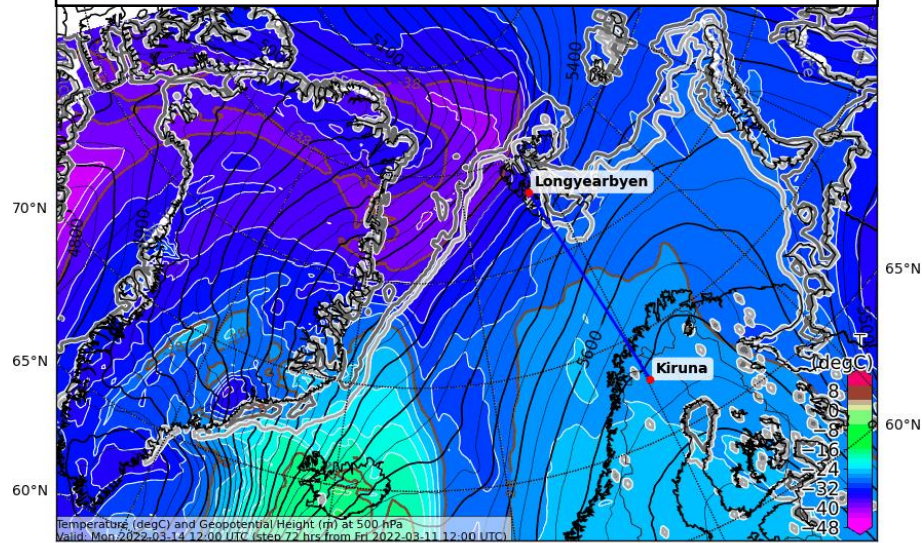
Forecast comparison yesterday 00 UTC vs. 12 UTC

Mon, 2022-03-14 12 UTC (+72h)

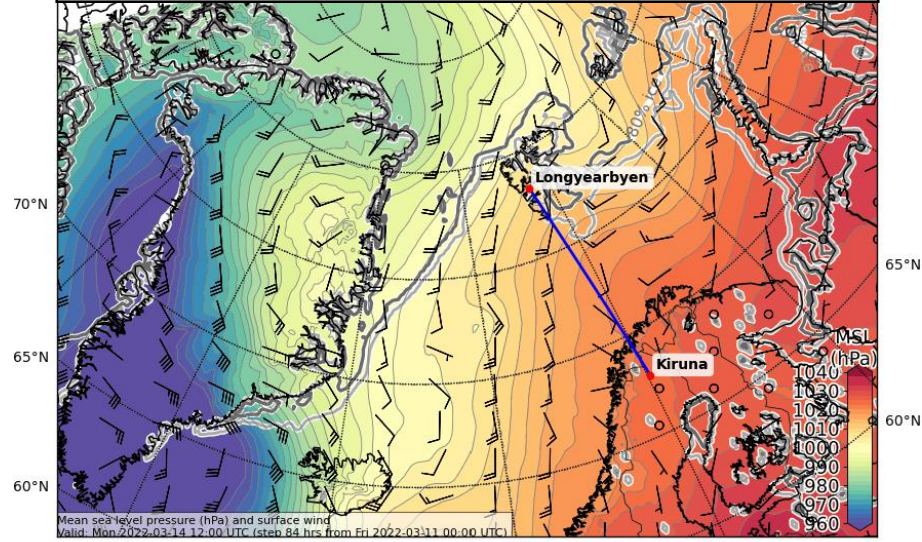
500 hPa Geopot. and T (yest. 00 UTC)



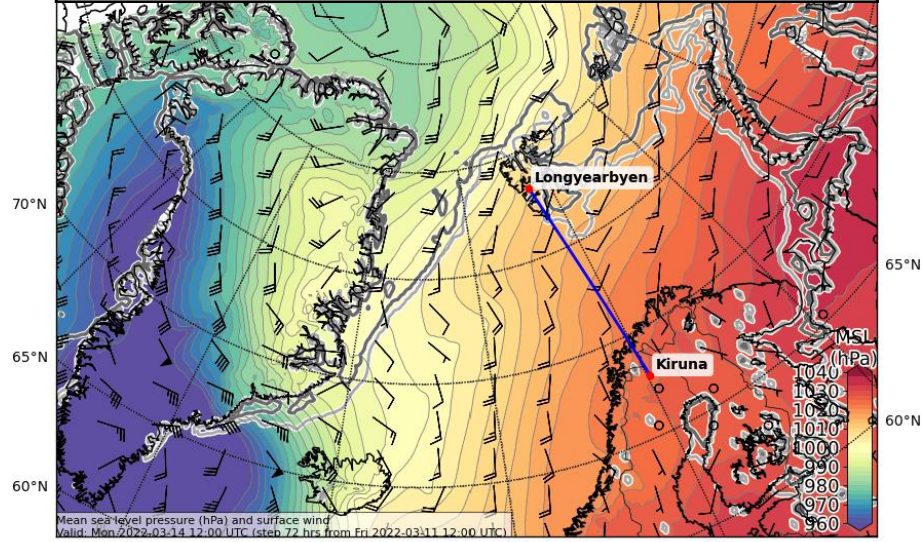
500 hPa Geopot. and T (yest. 12 UTC)



Sea level pressure (yest. 00UTC)

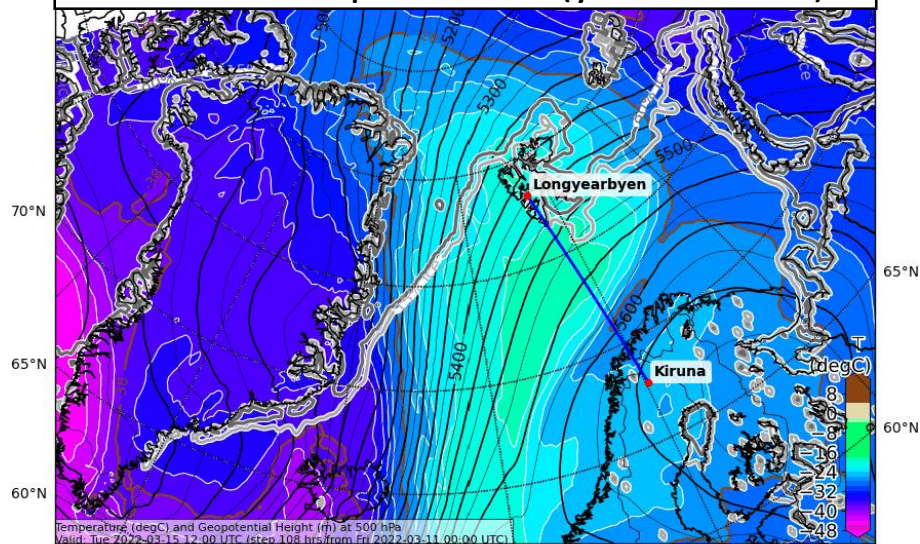


Sea level pressure (yest. 12 UTC)

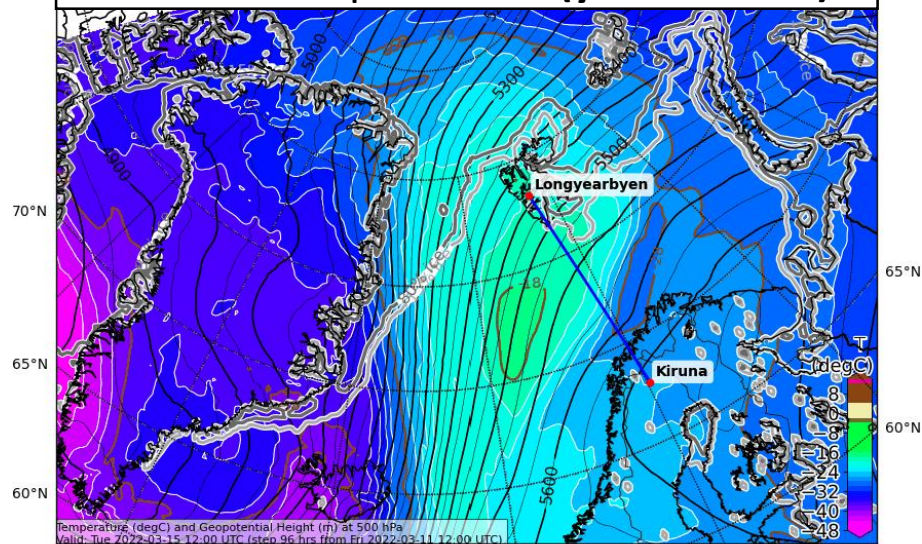


Tue, 2022-03-15 12 UTC (+96h)

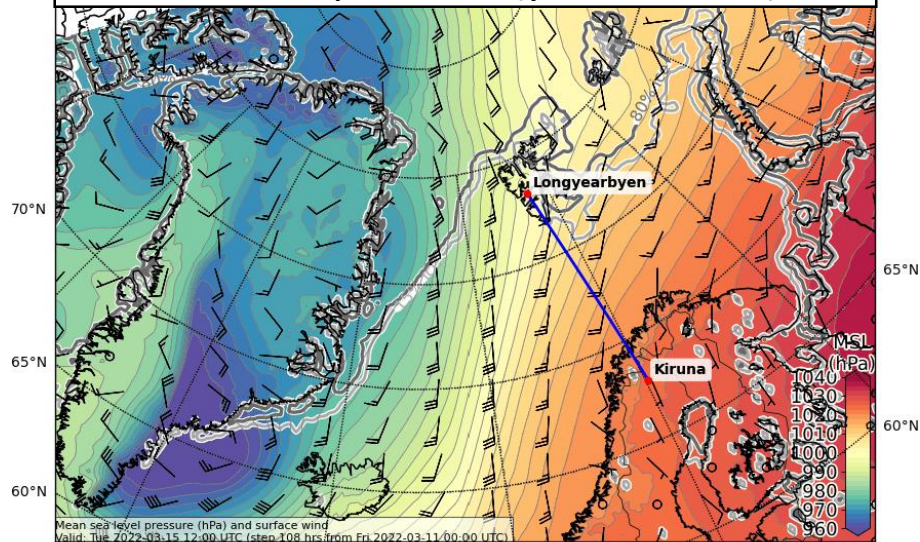
500 hPa Geopot. and T (yest. 00 UTC)



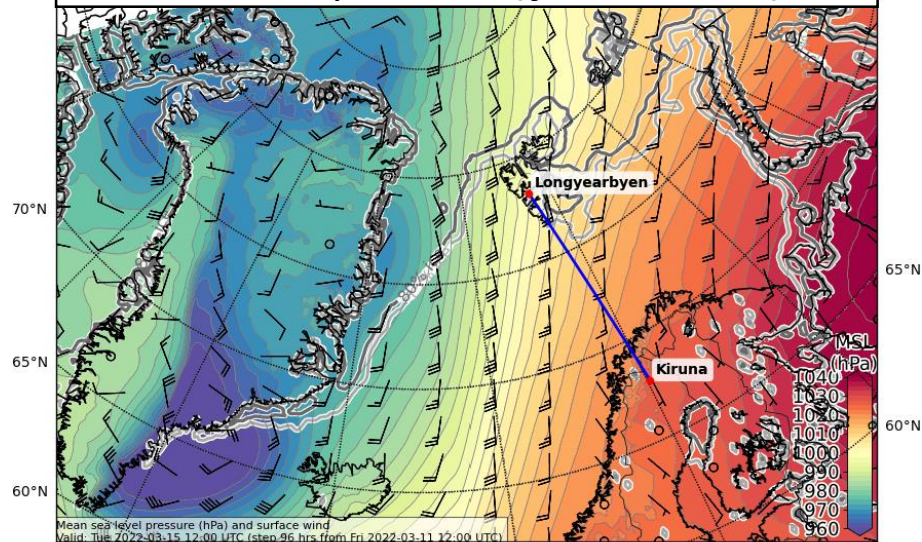
500 hPa Geopot. and T (yest. 12 UTC)



Sea level pressure (yest. 00 UTC)

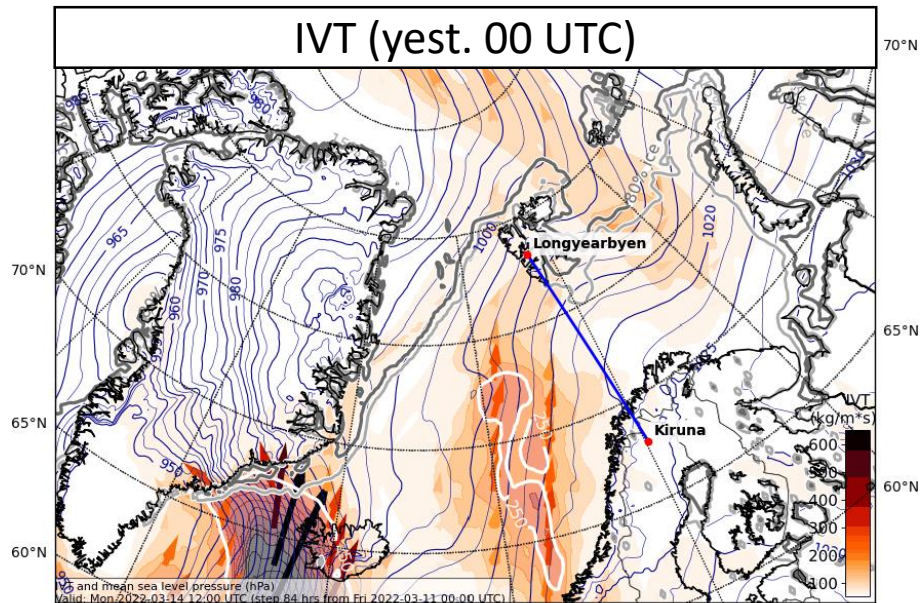


Sea level pressure (yest. 12 UTC)

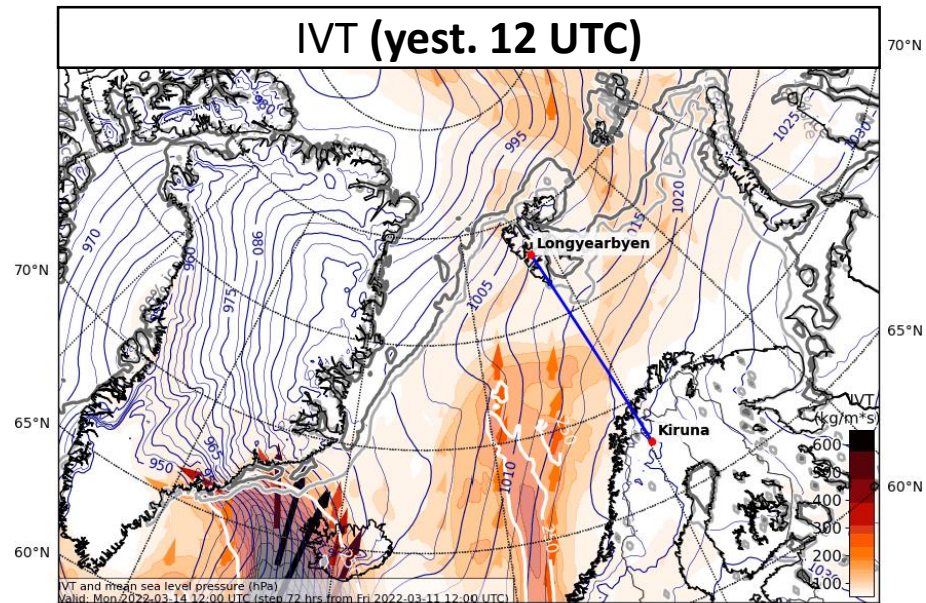


Mon, 2022-03-14 12 UTC (+72h)

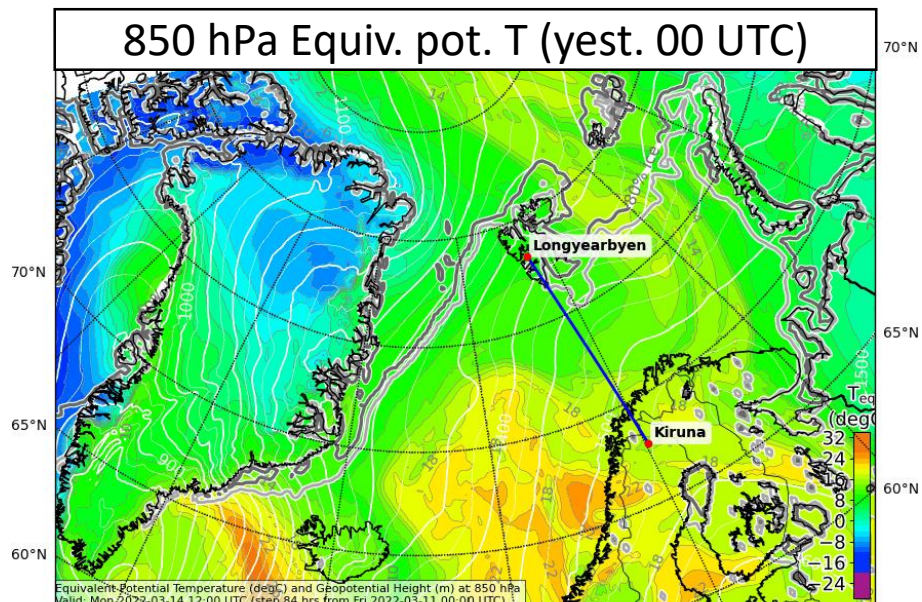
IVT (yest. 00 UTC)



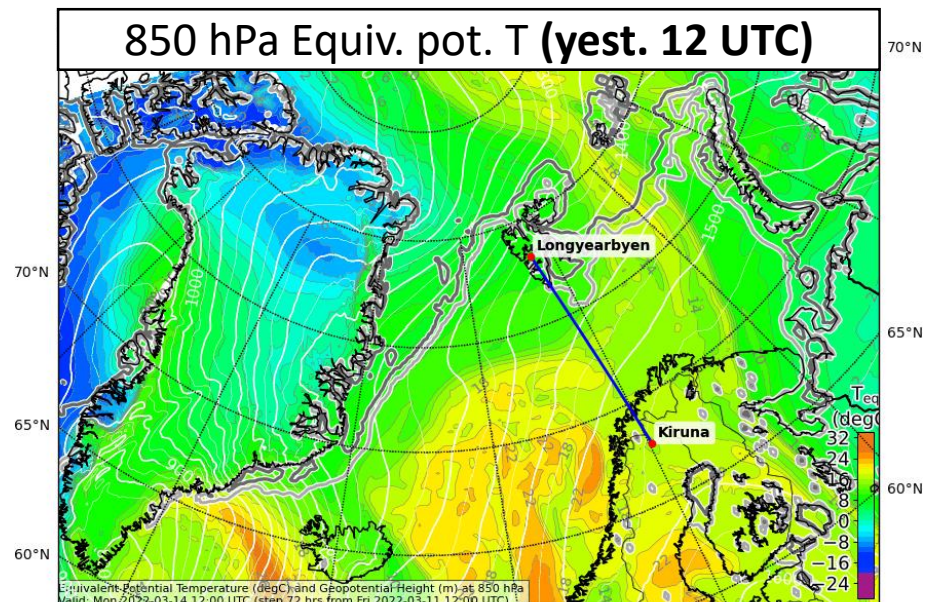
IVT (yest. 12 UTC)



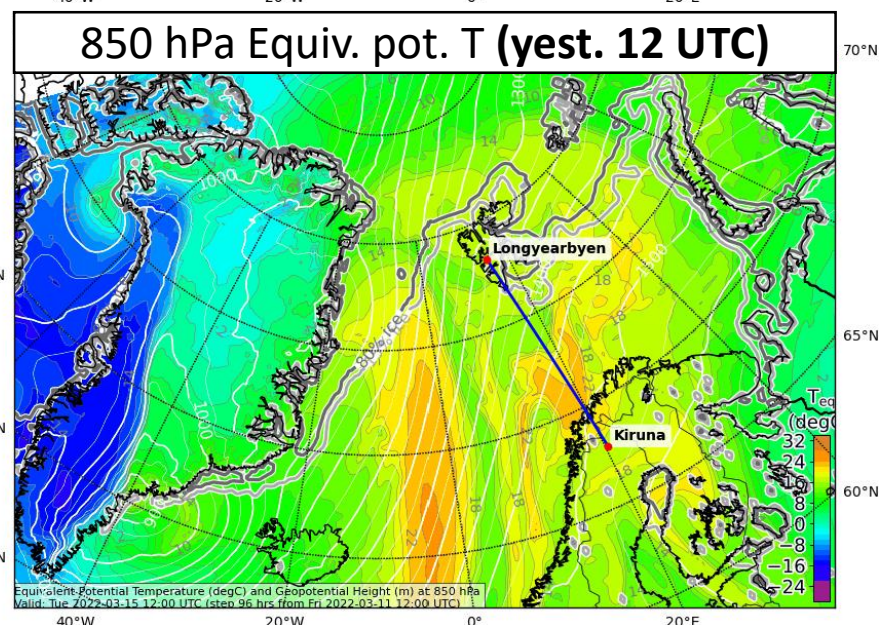
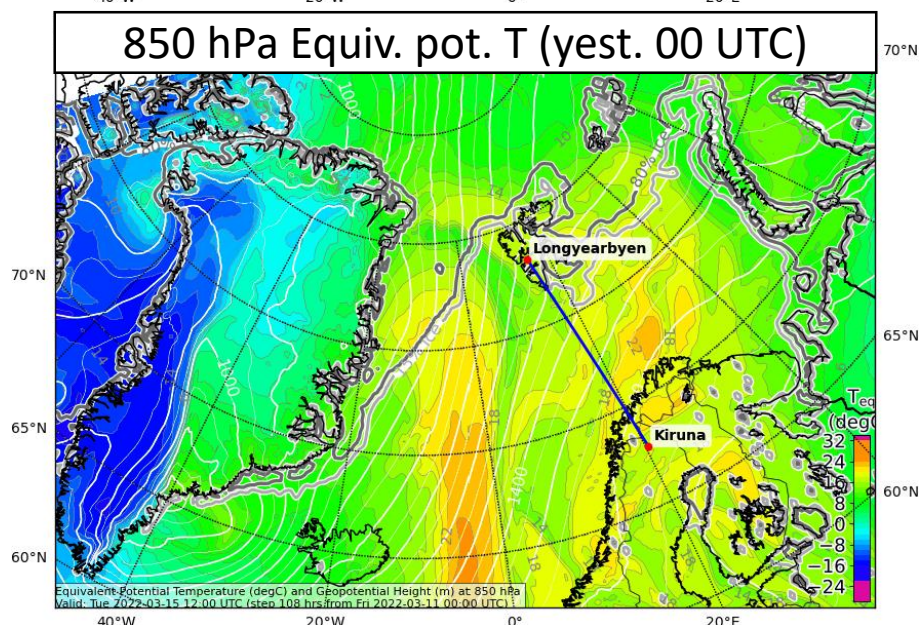
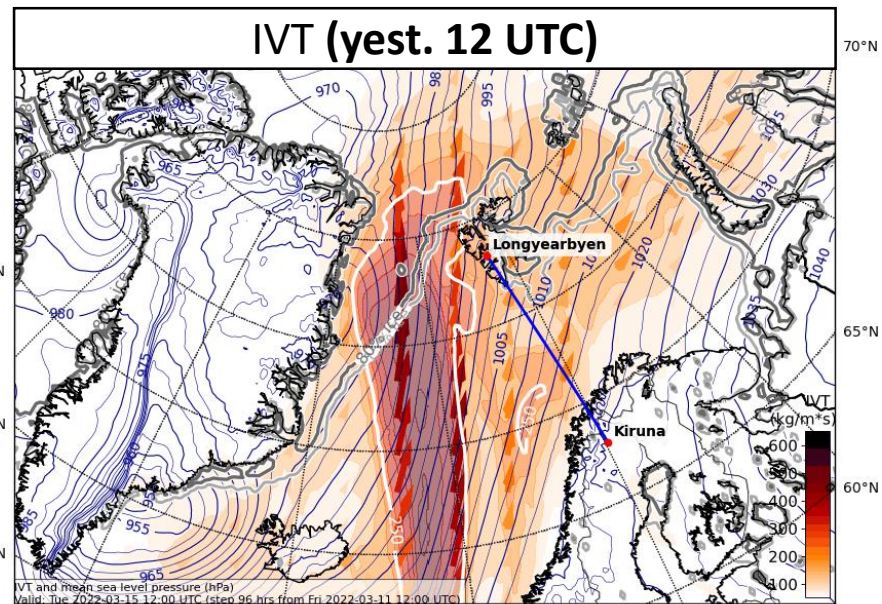
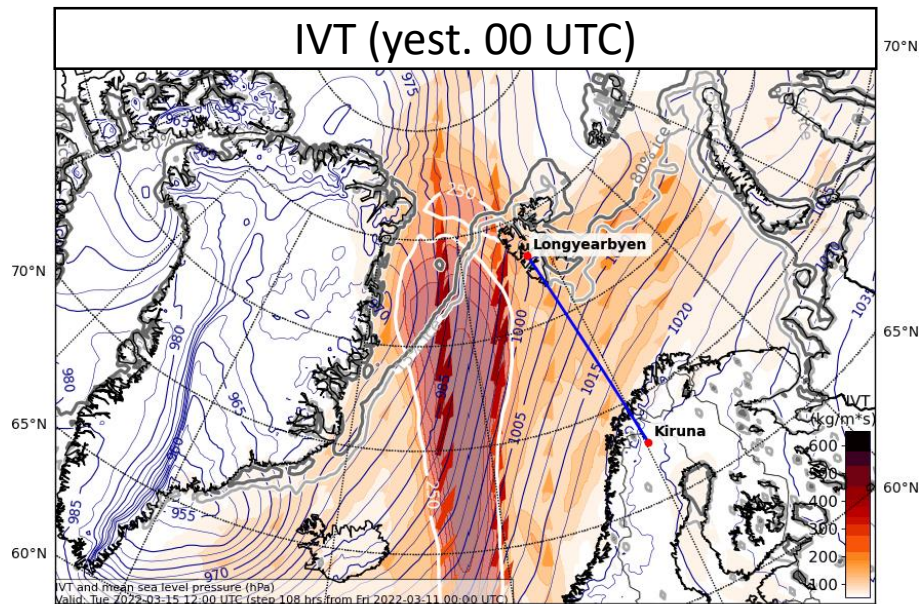
850 hPa Equiv. pot. T (yest. 00 UTC)



850 hPa Equiv. pot. T (yest. 12 UTC)



Tue, 2022-03-15 12 UTC (+96h)



Detailed outlook for Monday & Tuesday

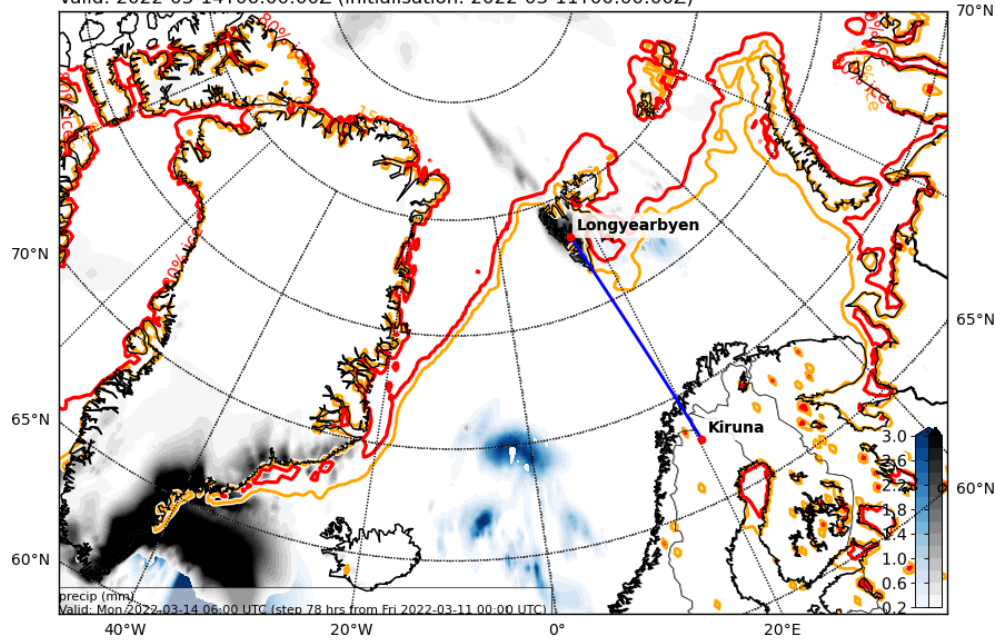
2022-03-11 12 UTC: 66 – 102h

Precip & Low cloud cover

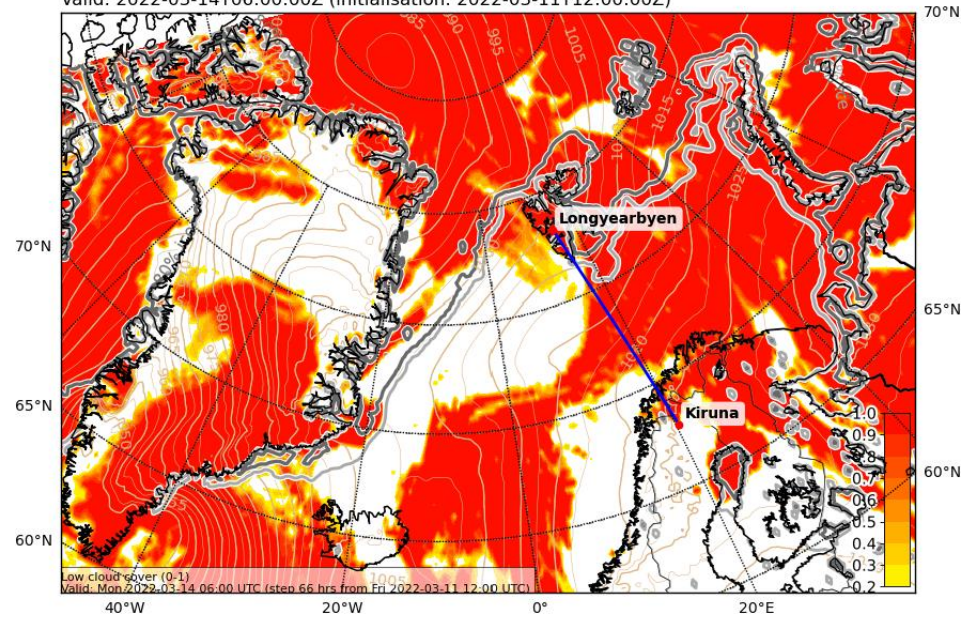
Total cloud cover

Mon, 2022-03-14 06 UTC

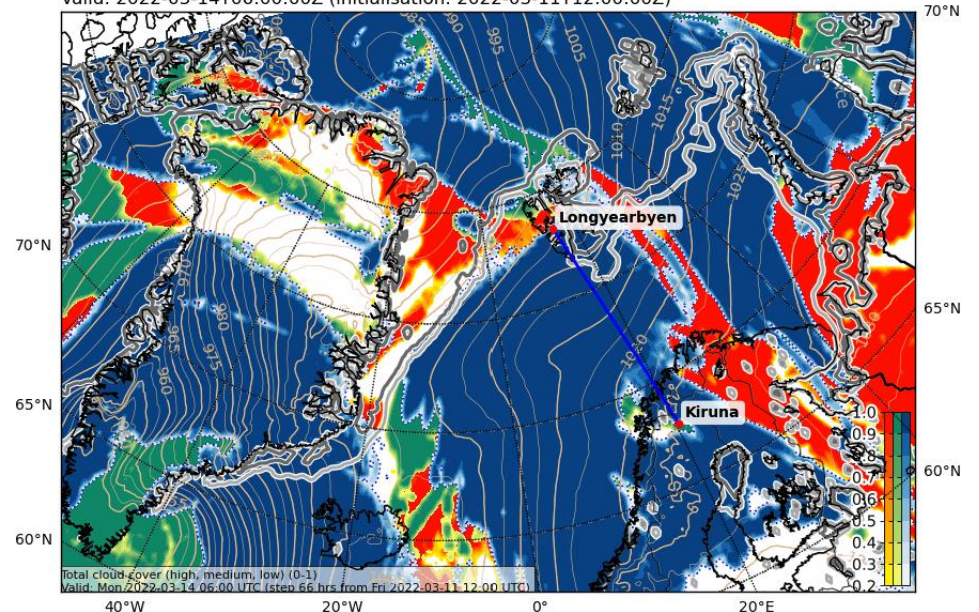
Precipitation, instantaneous (mm water eq.). Rain-blue, snow-black
Valid: 2022-03-14T06:00:00Z (initialisation: 2022-03-11T00:00:00Z)



Cloud Cover (0-1) and Mean Sea Level Pressure (hPa) (LOW)
Valid: 2022-03-14T06:00:00Z (initialisation: 2022-03-11T12:00:00Z)

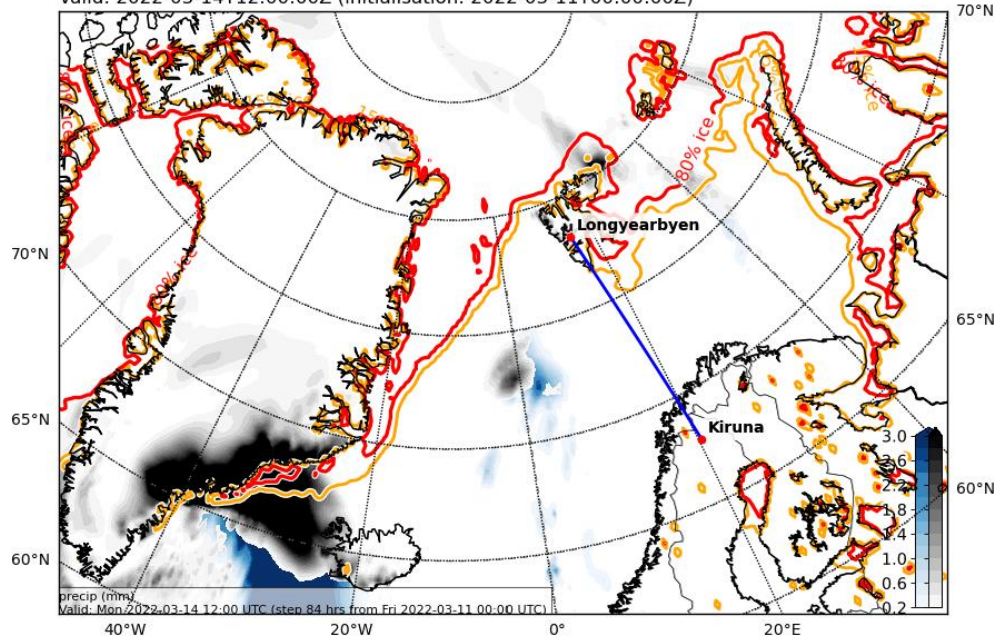


Cloud Cover (0-1) and Mean Sea Level Pressure (hPa) (TOT)
Valid: 2022-03-14T06:00:00Z (initialisation: 2022-03-11T12:00:00Z)

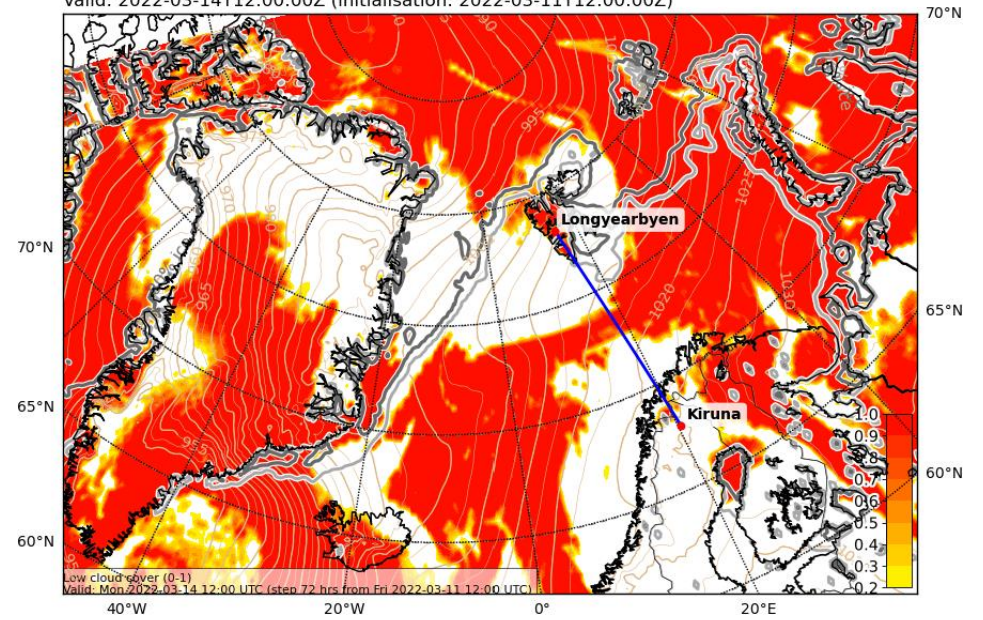


Mon, 2022-03-14 12 UTC

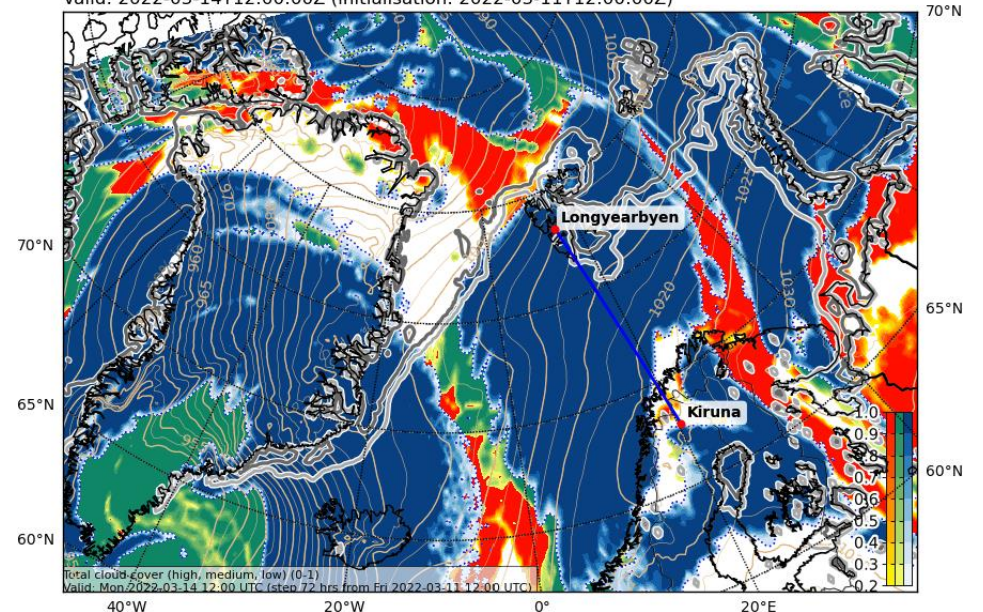
Precipitation, instantaneous (mm water eq.). Rain-blue, snow-black
Valid: 2022-03-14T12:00:00Z (initialisation: 2022-03-11T00:00:00Z)



Cloud Cover (0-1) and Mean Sea Level Pressure (hPa) (LOW)
Valid: 2022-03-14T12:00:00Z (initialisation: 2022-03-11T12:00:00Z)

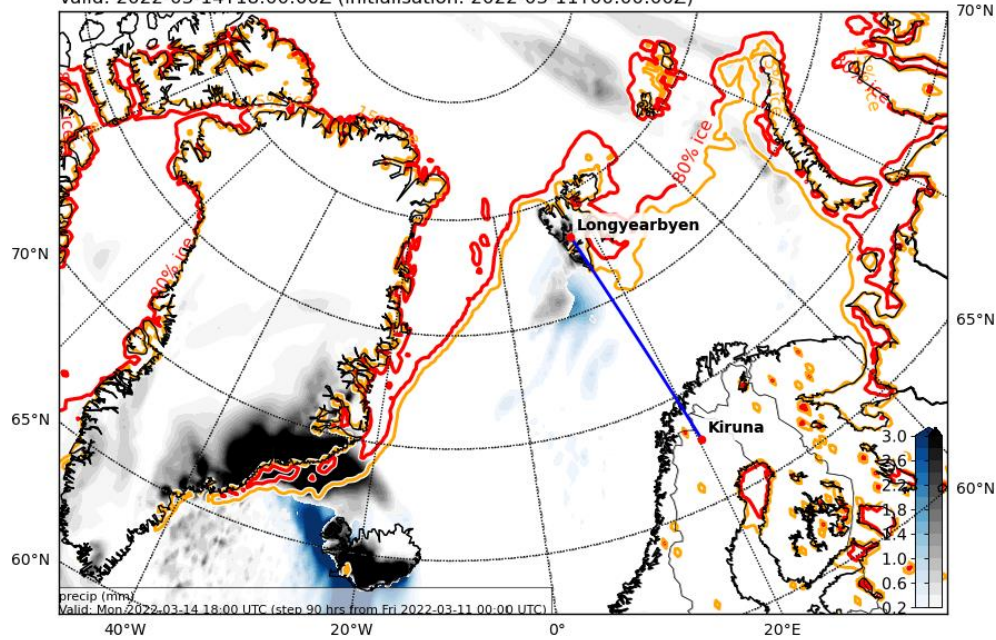


Cloud Cover (0-1) and Mean Sea Level Pressure (hPa) (TOT)
Valid: 2022-03-14T12:00:00Z (initialisation: 2022-03-11T12:00:00Z)



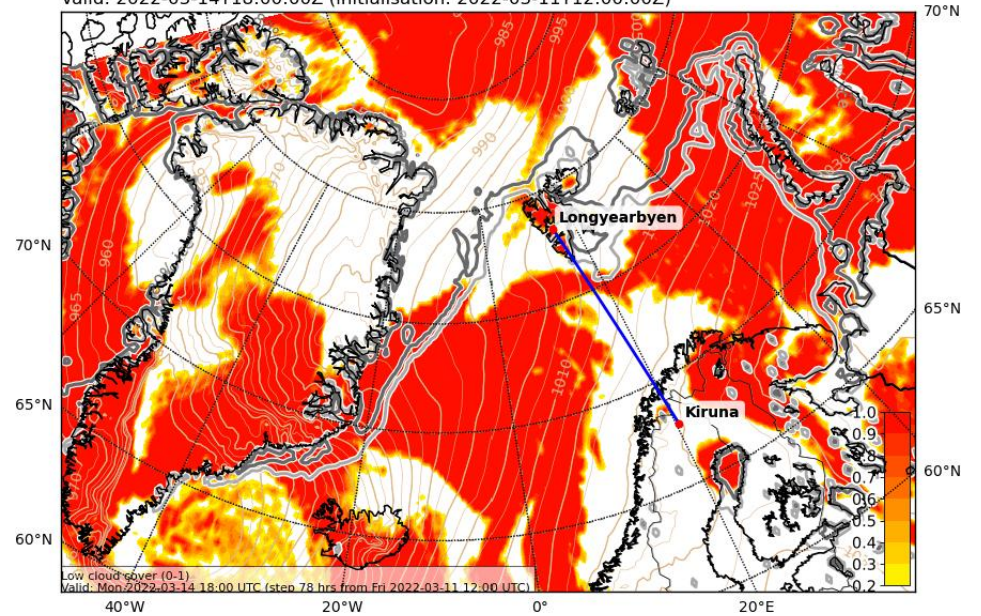
Mon, 2022-03-14 18 UTC

Precipitation, instantaneous (mm water eq.). Rain-blue, snow-black
Valid: 2022-03-14T18:00:00Z (initialisation: 2022-03-11T00:00:00Z)



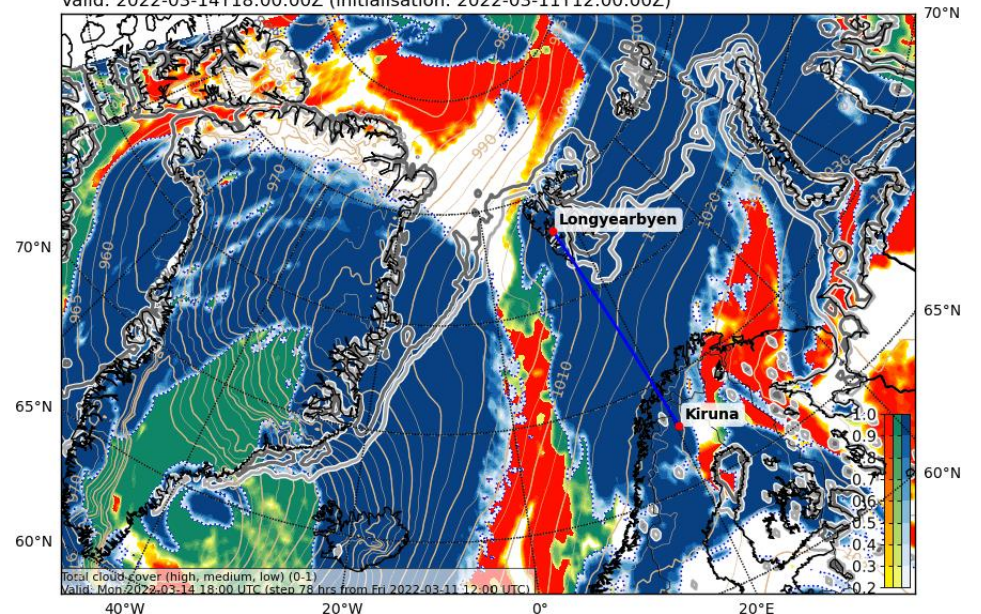
Cloud Cover (0-1) and Mean Sea Level Pressure (hPa) (LOW)

Valid: 2022-03-14T18:00:00Z (initialisation: 2022-03-11T12:00:00Z)



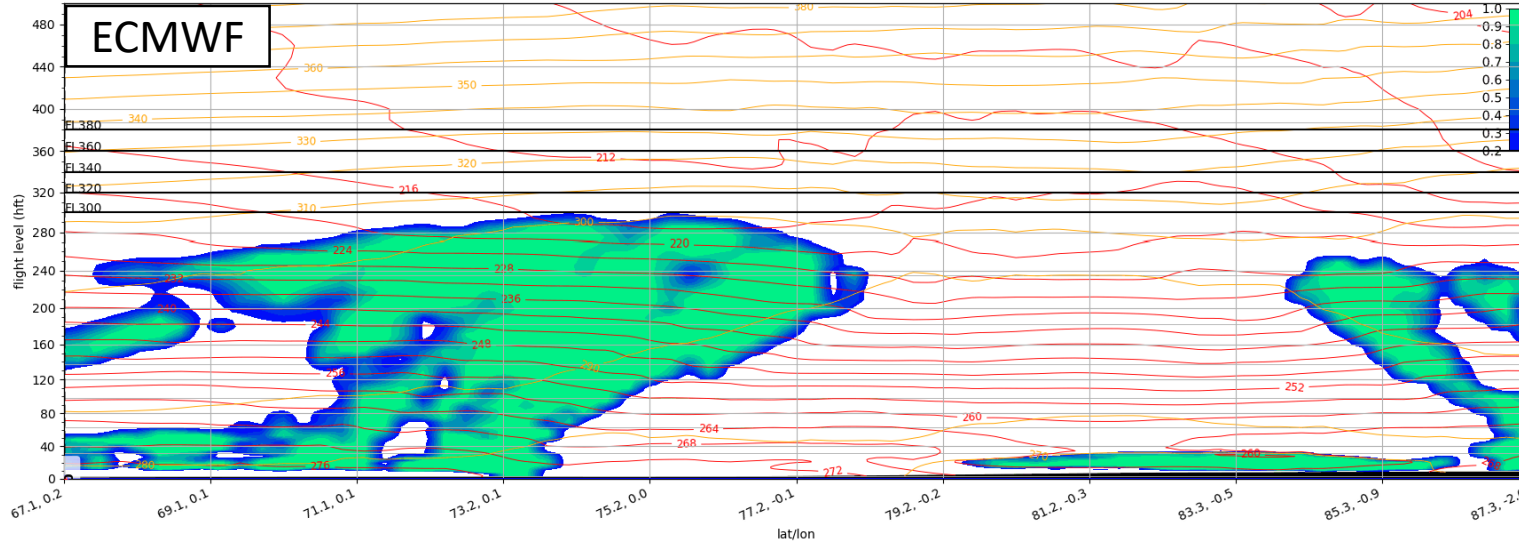
Cloud Cover (0-1) and Mean Sea Level Pressure (hPa) (TOT)

Valid: 2022-03-14T18:00:00Z (initialisation: 2022-03-11T12:00:00Z)

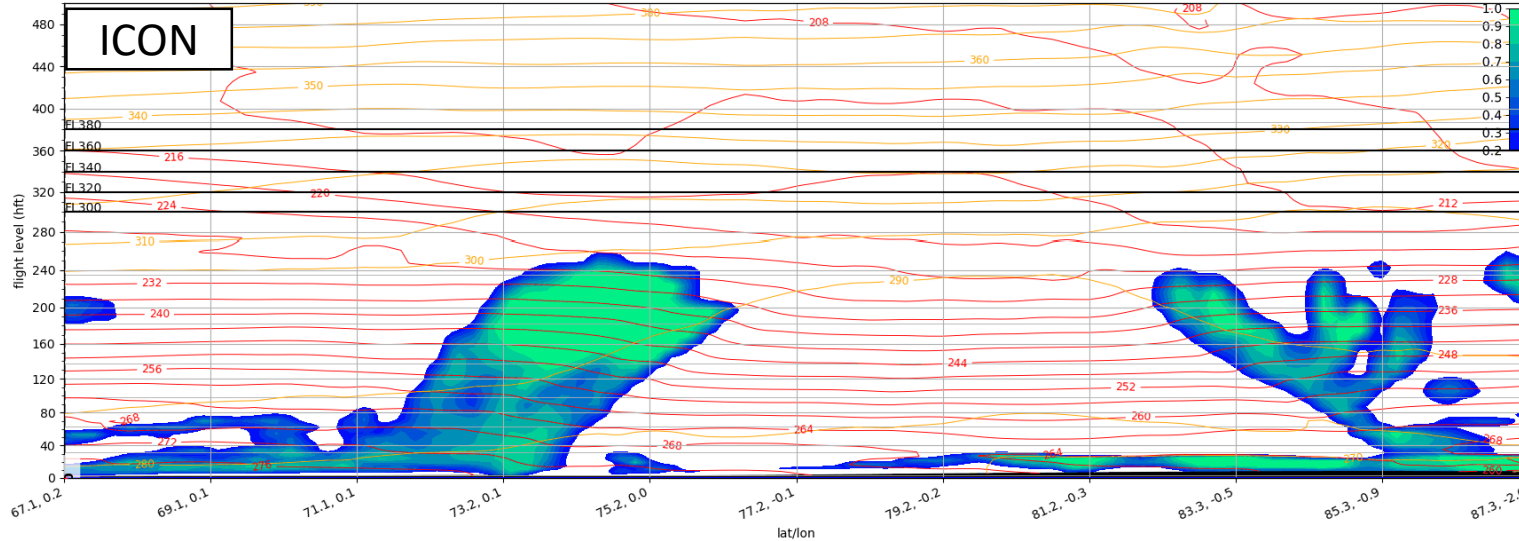


Mon, 2022-03-14 12 UTC

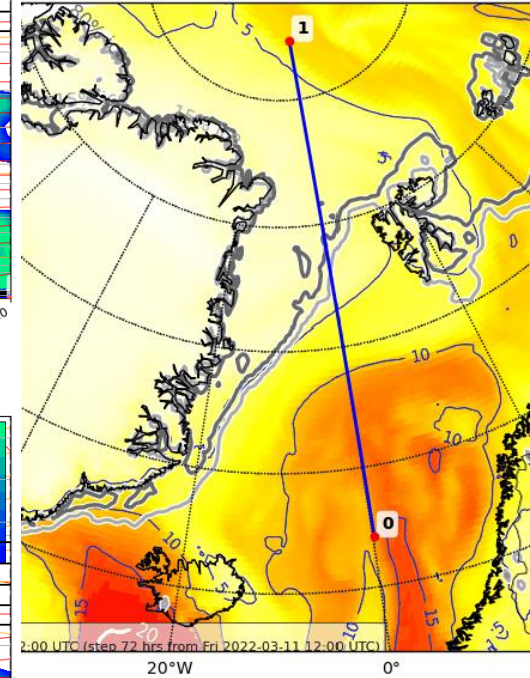
Cloud Cover (0-1) Vertical Section
Valid: 2022-03-14T12:00:00Z (initialisation: 2022-03-11T12:00:00Z)



Cloud Cover (0-1) Vertical Section
Valid: 2022-03-14T12:00:00Z (initialisation: 2022-03-12T00:00:00Z)

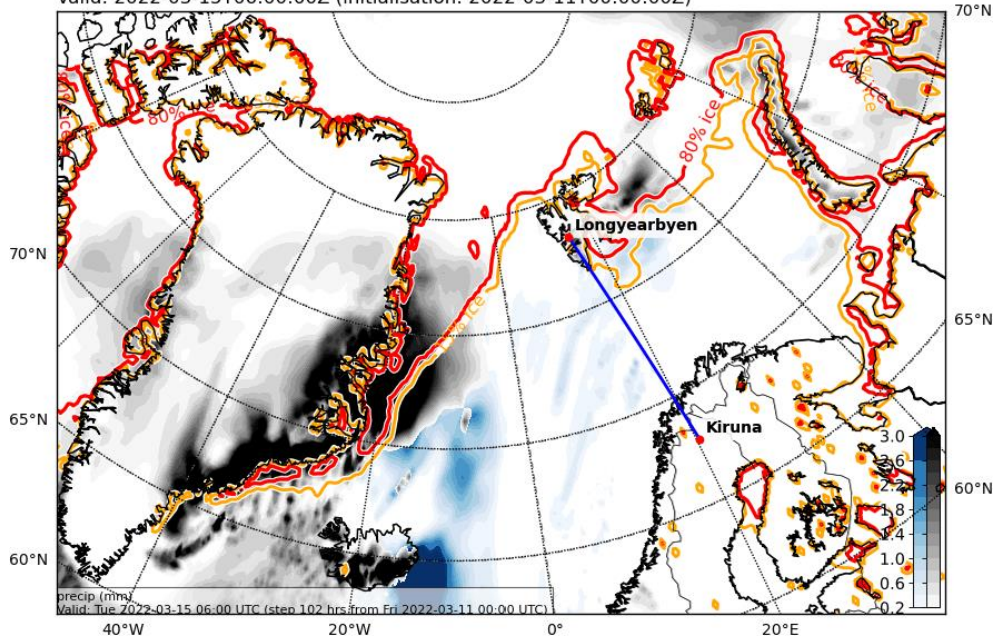


4T12:00:00Z (initialisation: 2022-03-11T12:00:00Z)

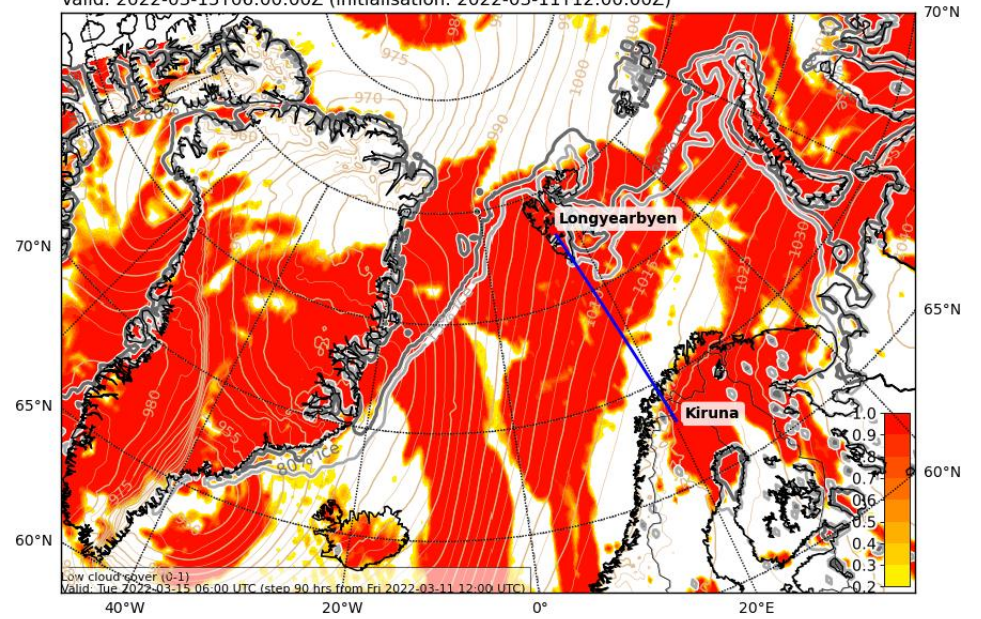


Tue, 2022-03-15 06 UTC

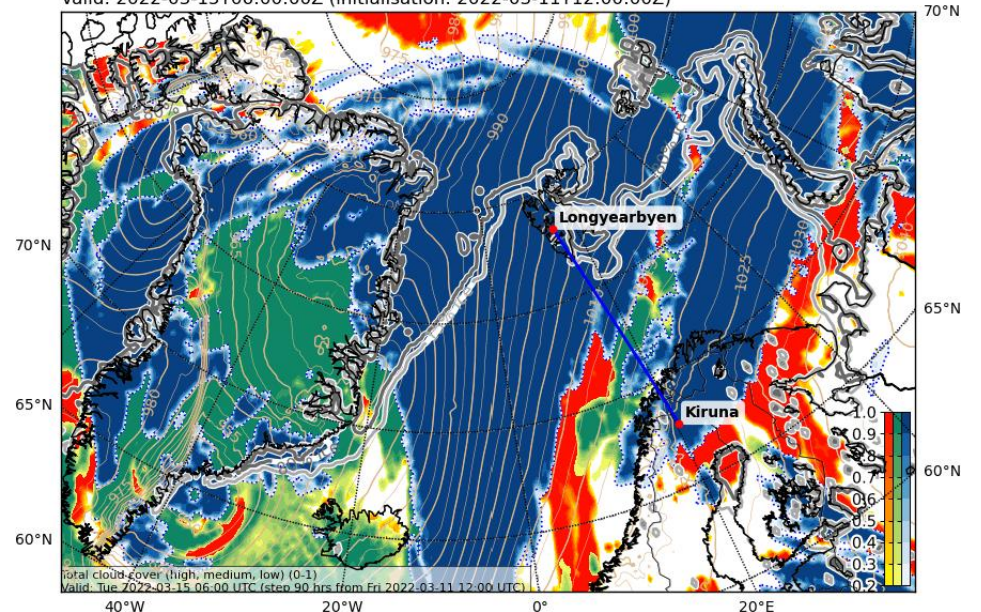
Precipitation, instantaneous (mm water eq.). Rain-blue, snow-black
Valid: 2022-03-15T06:00:00Z (initialisation: 2022-03-11T00:00:00Z)



Cloud Cover (0-1) and Mean Sea Level Pressure (hPa) (LOW)
Valid: 2022-03-15T06:00:00Z (initialisation: 2022-03-11T12:00:00Z)

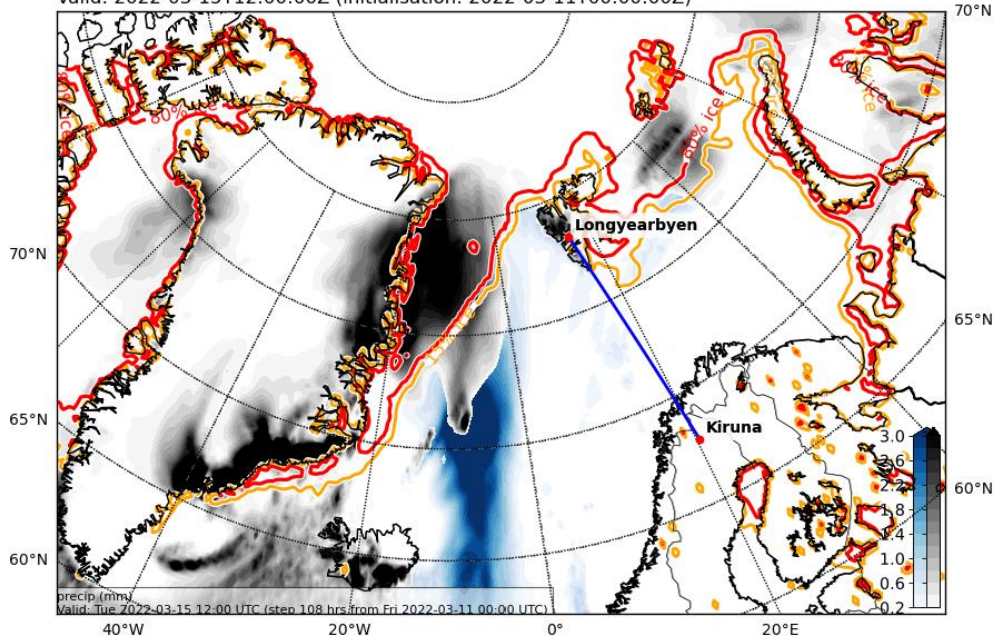


Cloud Cover (0-1) and Mean Sea Level Pressure (hPa) (TOT)
Valid: 2022-03-15T06:00:00Z (initialisation: 2022-03-11T12:00:00Z)

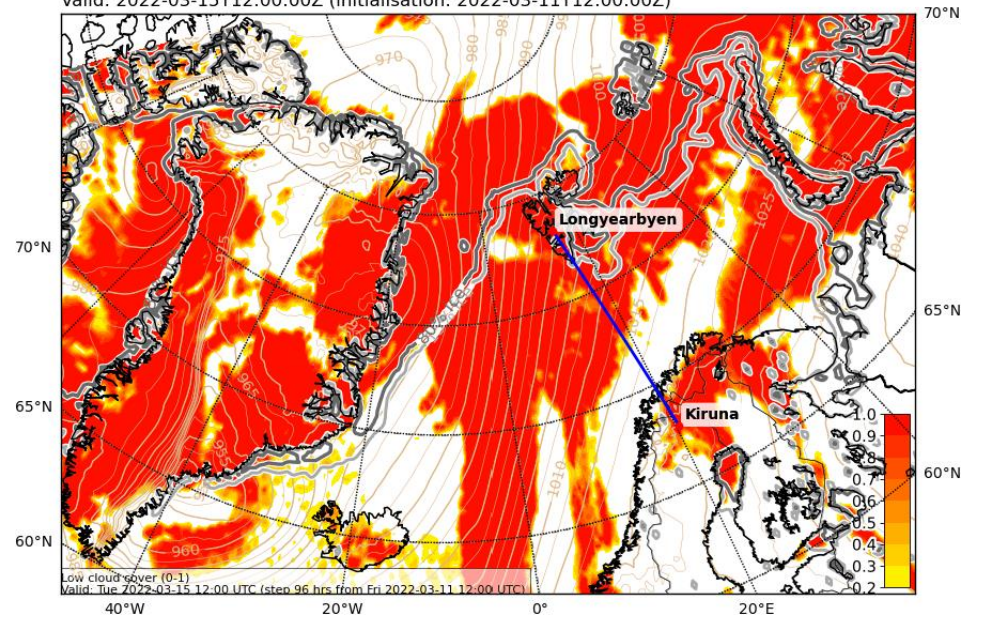


Tue, 2022-03-15 12 UTC

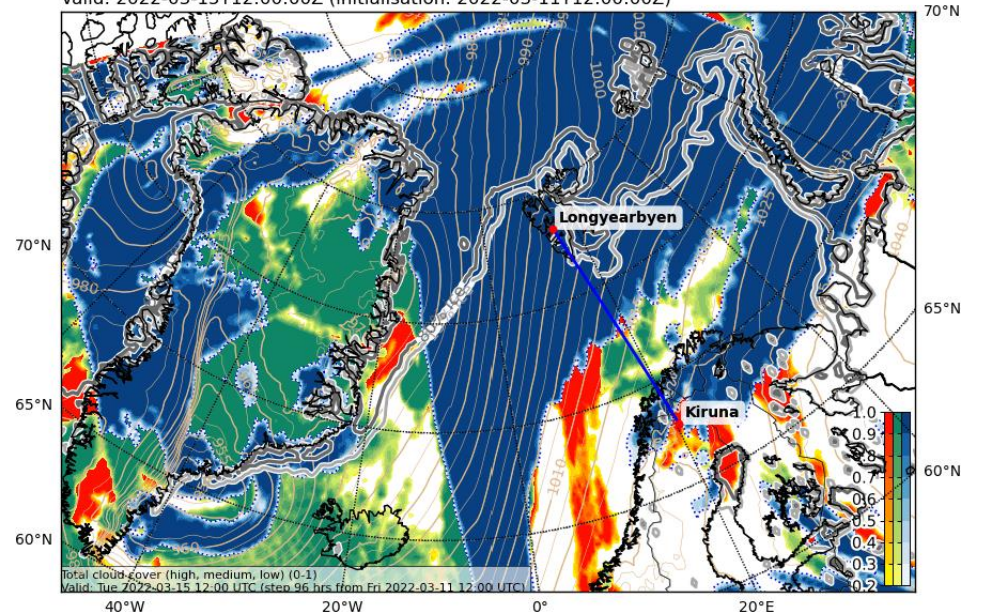
Precipitation, instantaneous (mm water eq.). Rain-blue, snow-black
Valid: 2022-03-15T12:00:00Z (initialisation: 2022-03-11T00:00:00Z)



Cloud Cover (0-1) and Mean Sea Level Pressure (hPa) (LOW)
Valid: 2022-03-15T12:00:00Z (initialisation: 2022-03-11T12:00:00Z)

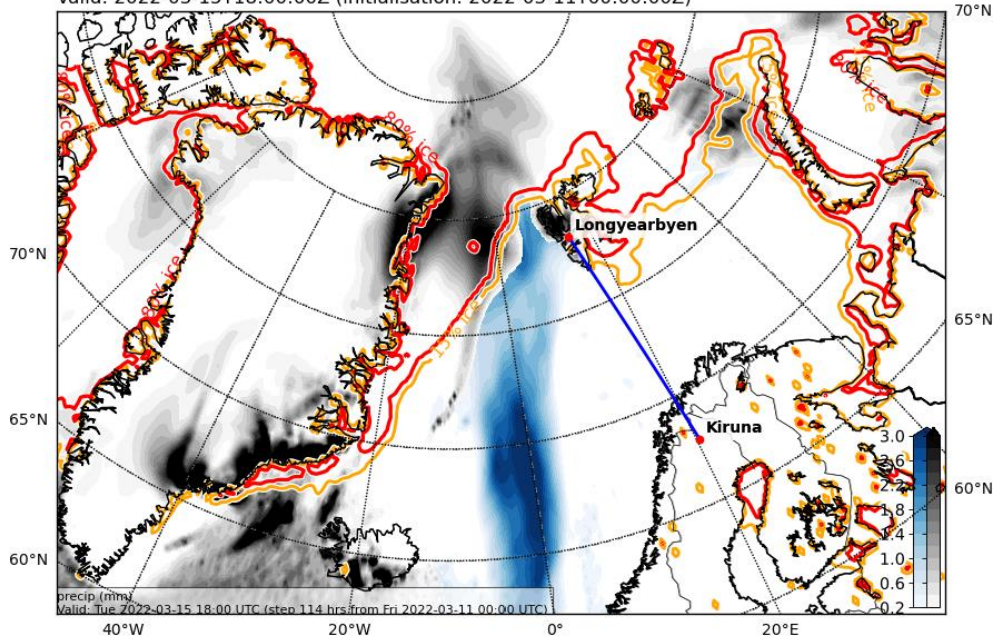


Cloud Cover (0-1) and Mean Sea Level Pressure (hPa) (TOT)
Valid: 2022-03-15T12:00:00Z (initialisation: 2022-03-11T12:00:00Z)

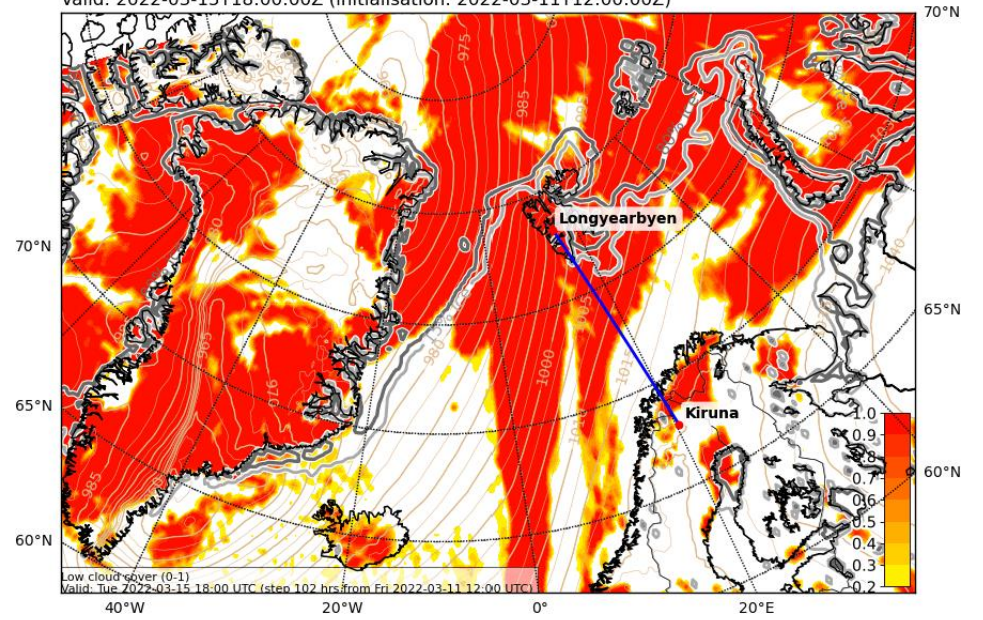


Tue, 2022-03-15 18 UTC

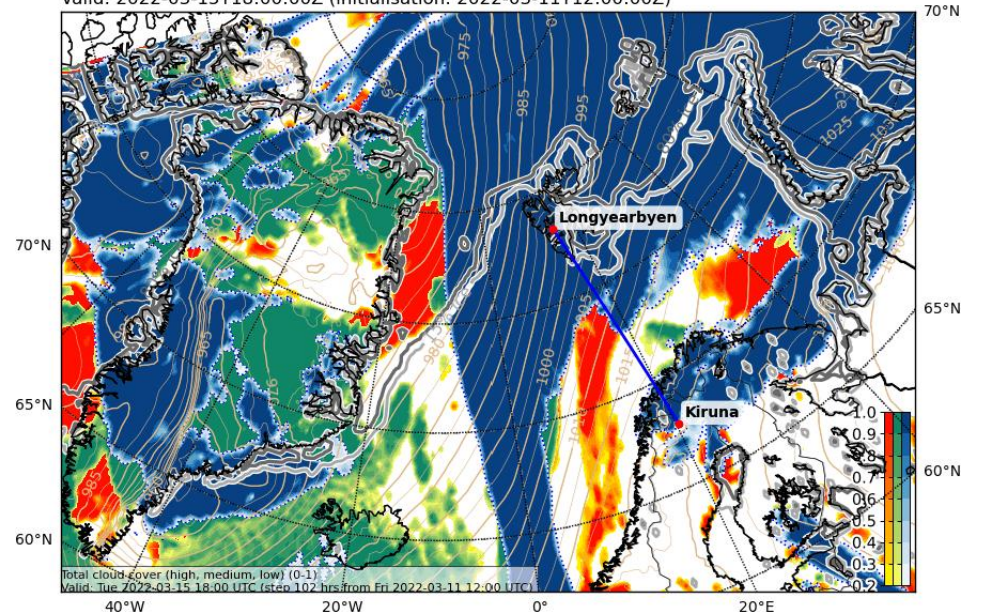
Precipitation, instantaneous (mm water eq.). Rain-blue, snow-black
Valid: 2022-03-15T18:00:00Z (initialisation: 2022-03-11T00:00:00Z)



Cloud Cover (0-1) and Mean Sea Level Pressure (hPa) (LOW)
Valid: 2022-03-15T18:00:00Z (initialisation: 2022-03-11T12:00:00Z)

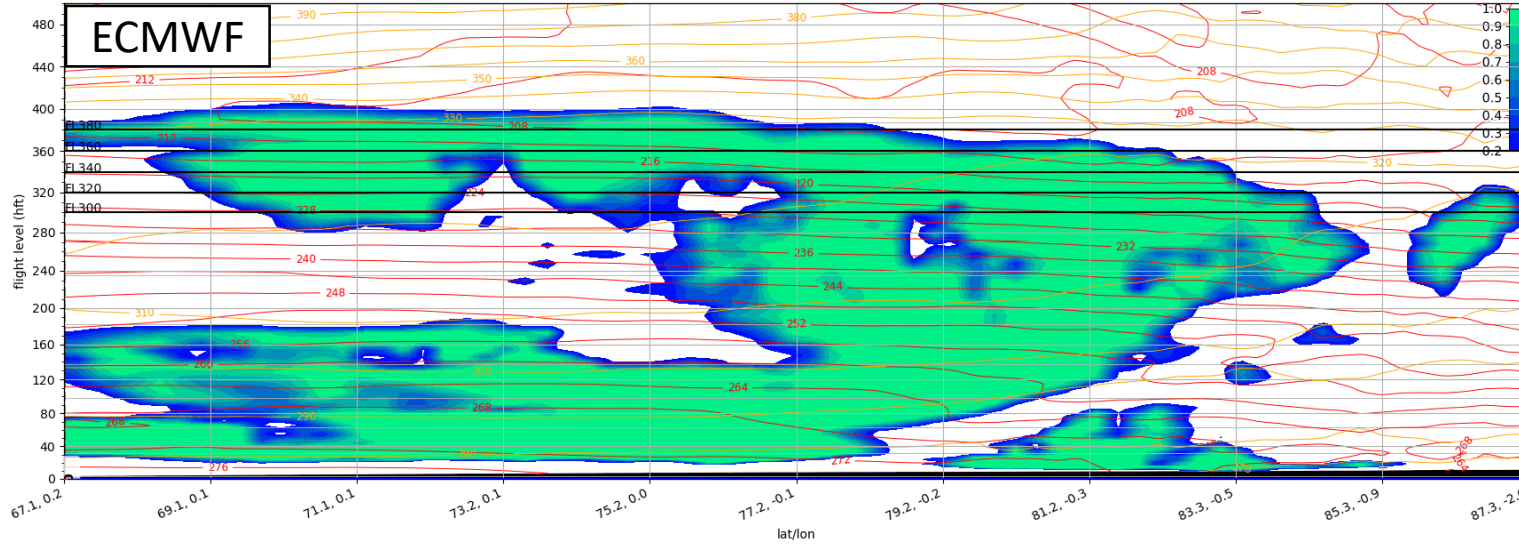


Cloud Cover (0-1) and Mean Sea Level Pressure (hPa) (TOT)
Valid: 2022-03-15T18:00:00Z (initialisation: 2022-03-11T12:00:00Z)

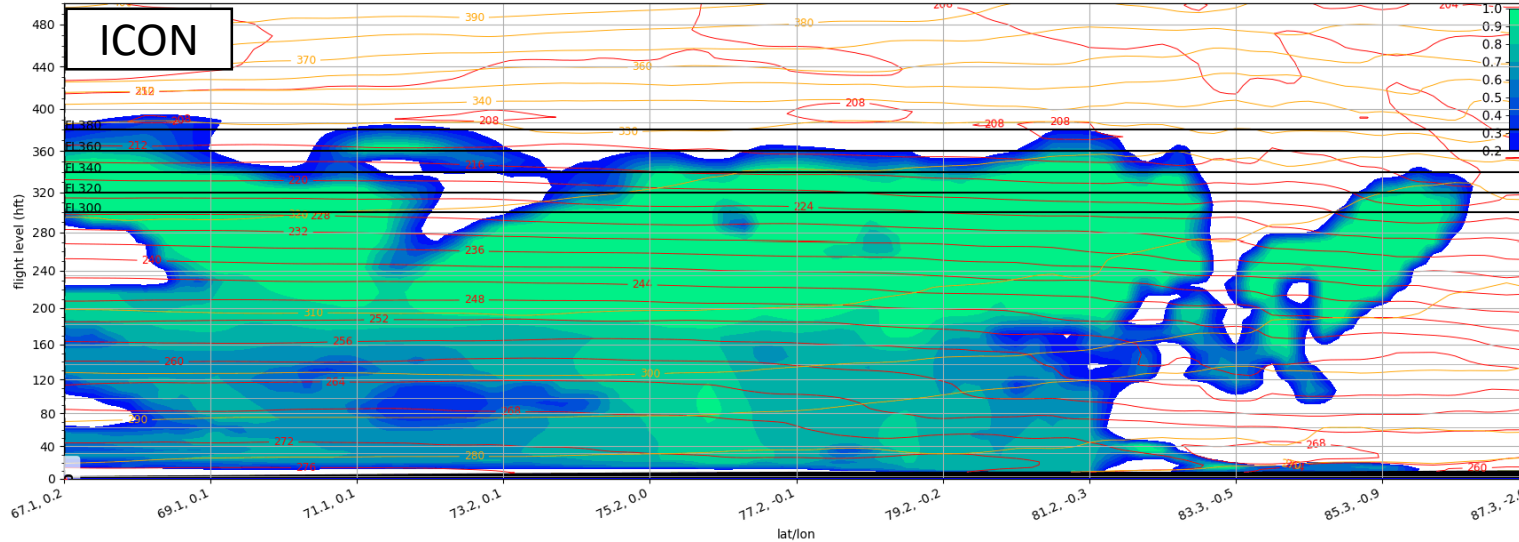


Tue, 2022-03-15 12 UTC

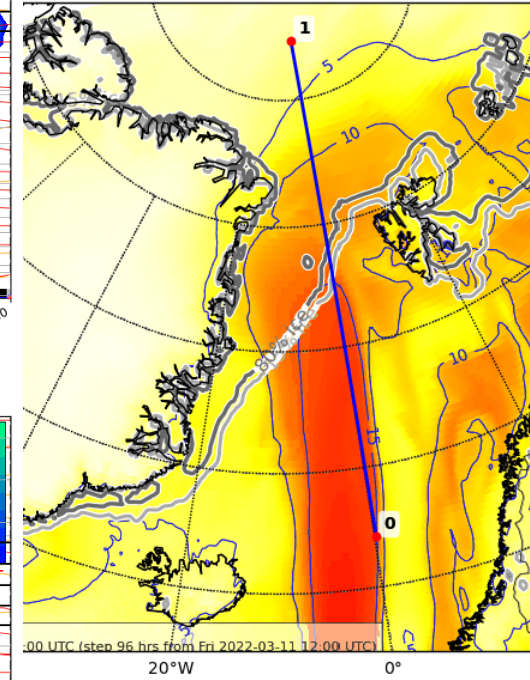
Cloud Cover (0-1) Vertical Section
Valid: 2022-03-15T12:00:00Z (initialisation: 2022-03-11T12:00:00Z)



Cloud Cover (0-1) Vertical Section
Valid: 2022-03-15T12:00:00Z (initialisation: 2022-03-12T00:00:00Z)



5T12:00:00Z (initialisation: 2022-03-11T12:00:00Z)



Summary

Summary: Weather Update 2022-03-12, 09:00 LT

- **Monday, 2022-03-14:**

- Similar pressure and geopotential fields as in previous run
- Svalbard surrounded by IVT
- Secondary low in North Atlantic still present

- **Tuesday, 2022-03-15:**

- IVT narrower in its northern part; second local maximum close to Norway
- Heavy precip (snow and rain) over Northern Atlantic and western Fram Strait
→ In the evening: also eastern Fram Strait and Svalbard
- Cloud top is about FL400 in both ICON and ECMWF