

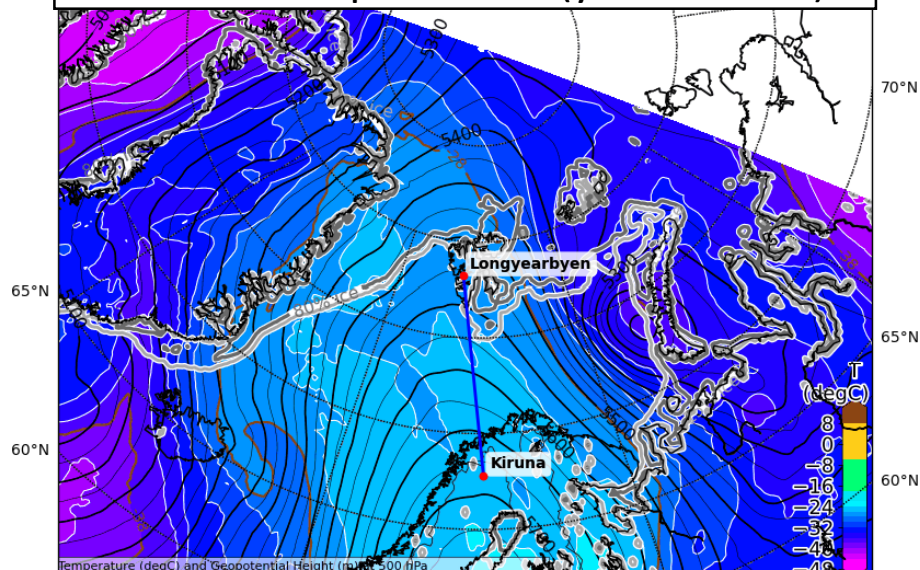
Weather update HALO-(AC)³

Thursday, 2022-03-10, 09:00 LT

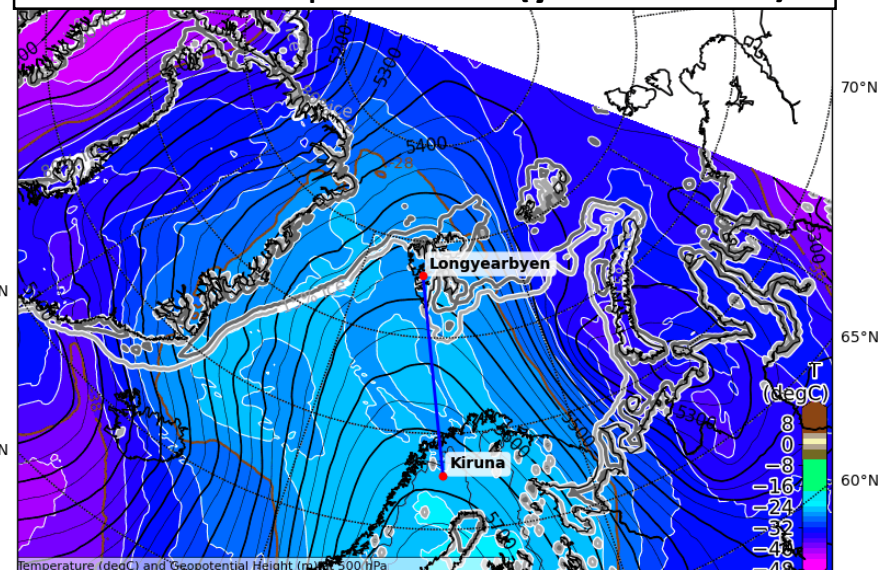
Forecast comparison yesterday 00 UTC vs. 12 UTC

Sat, 2022-03-12 12 UTC (+60h)

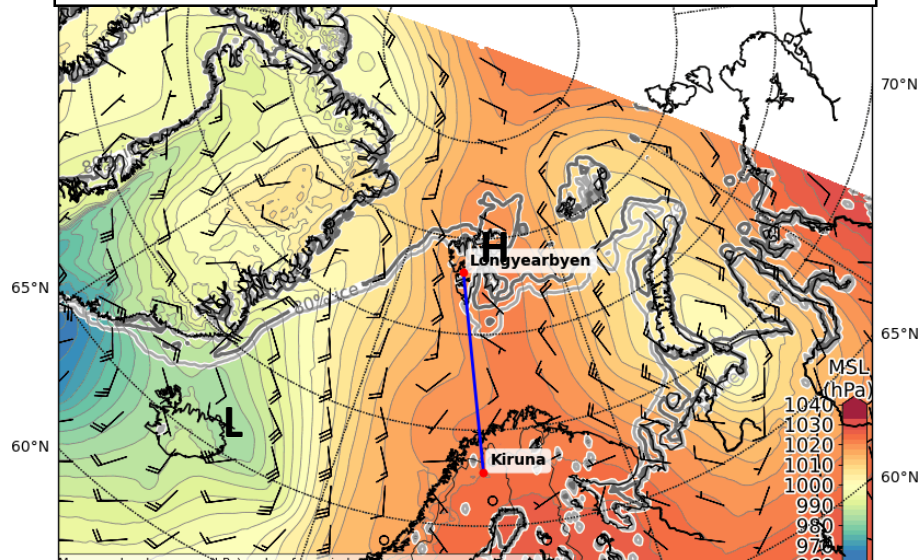
500 hPa Geopot. and T (yest. 00 UTC)



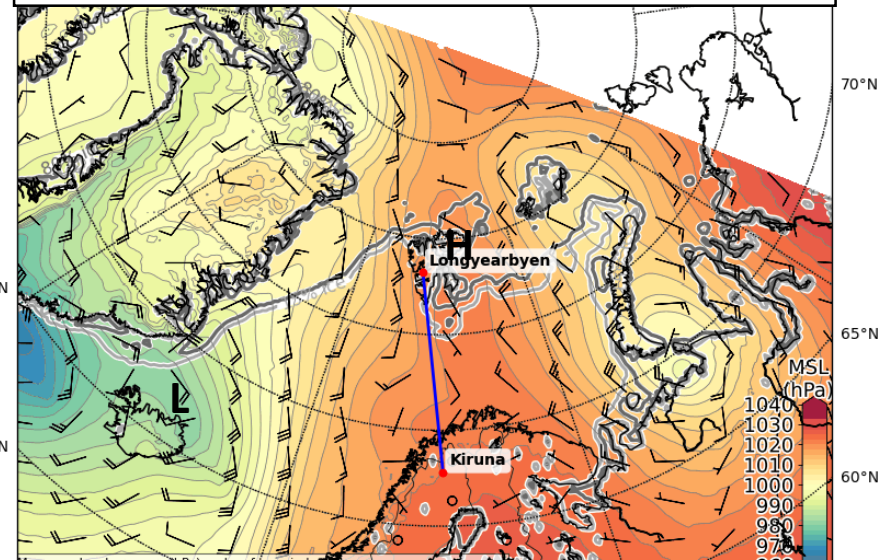
500 hPa Geopot. and T (yest. 12 UTC)



Sea level pressure (yest. 00UTC)

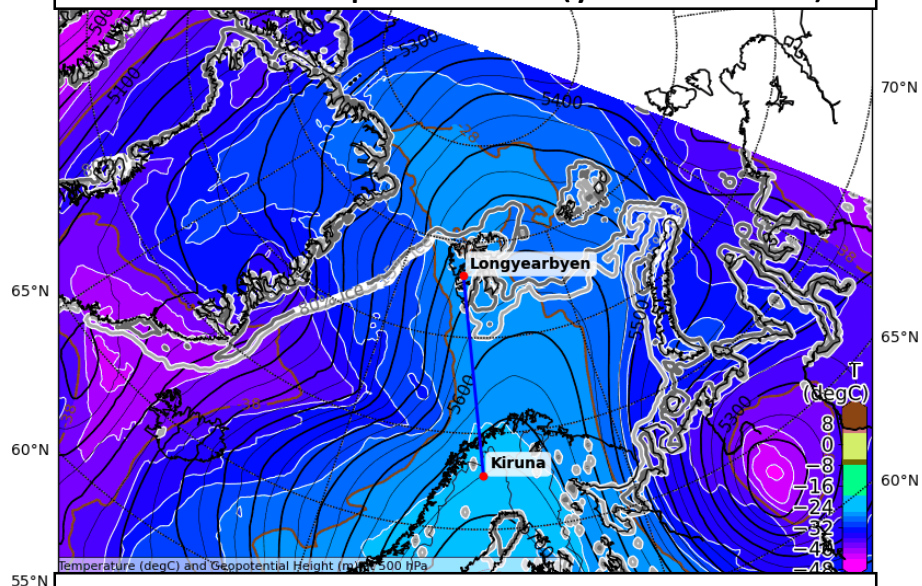


Sea level pressure (yest. 12 UTC)

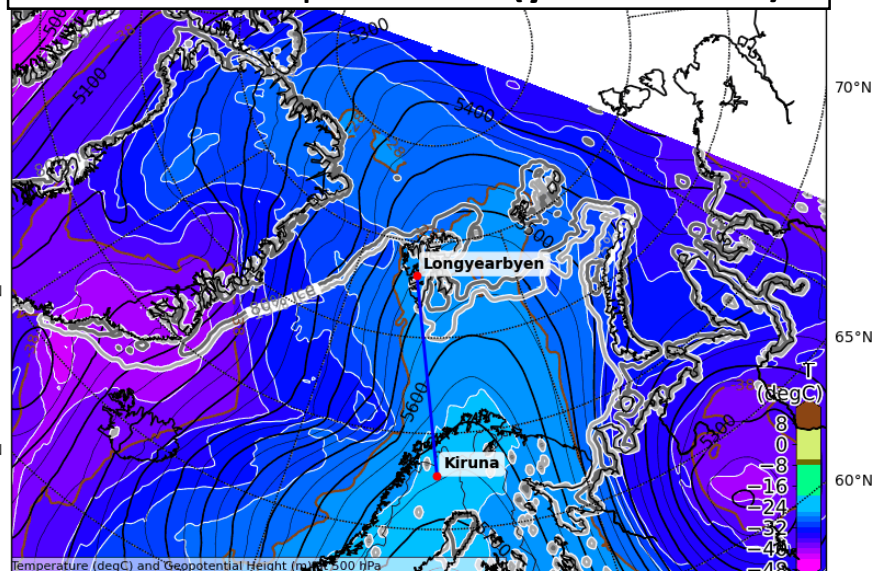


Sun, 2022-03-13 12 UTC (+84h)

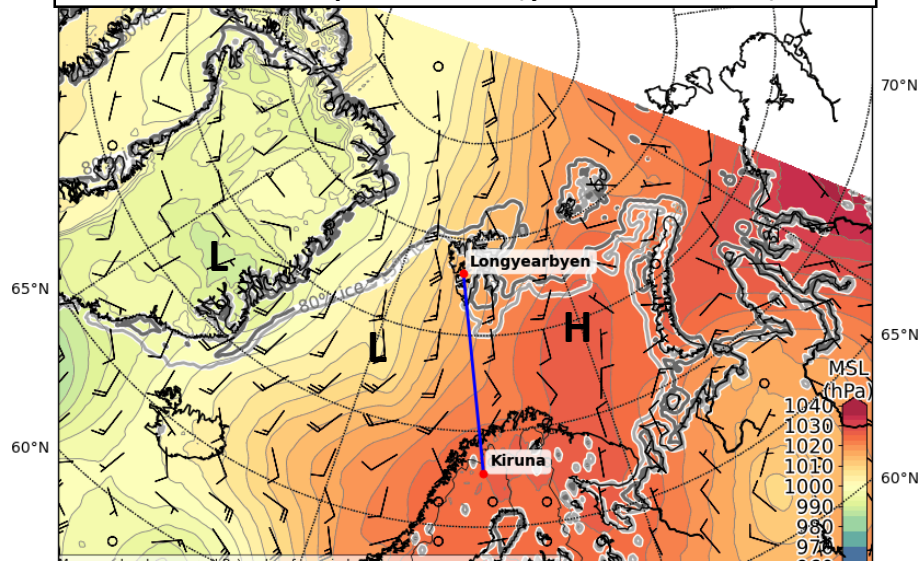
500 hPa Geopot. and T (yest. 00 UTC)



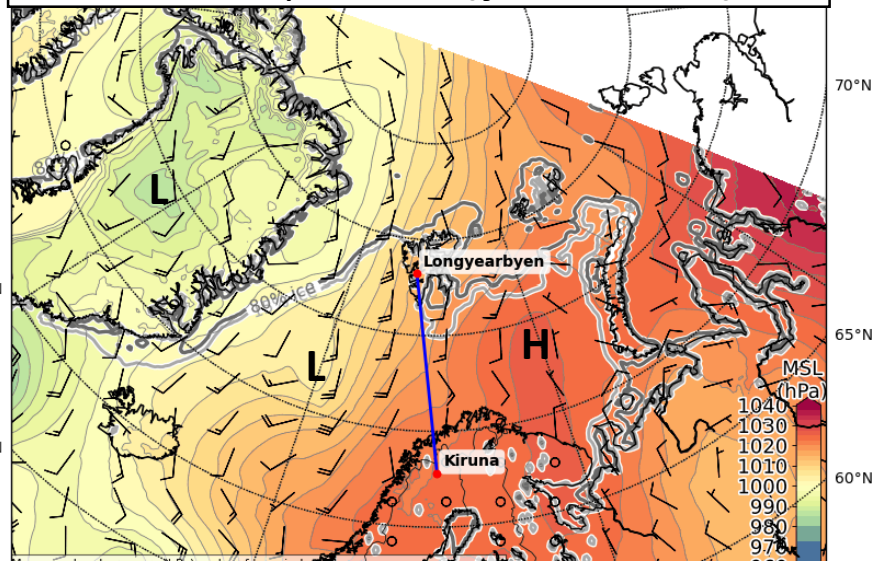
500 hPa Geopot. and T (yest. 12 UTC)



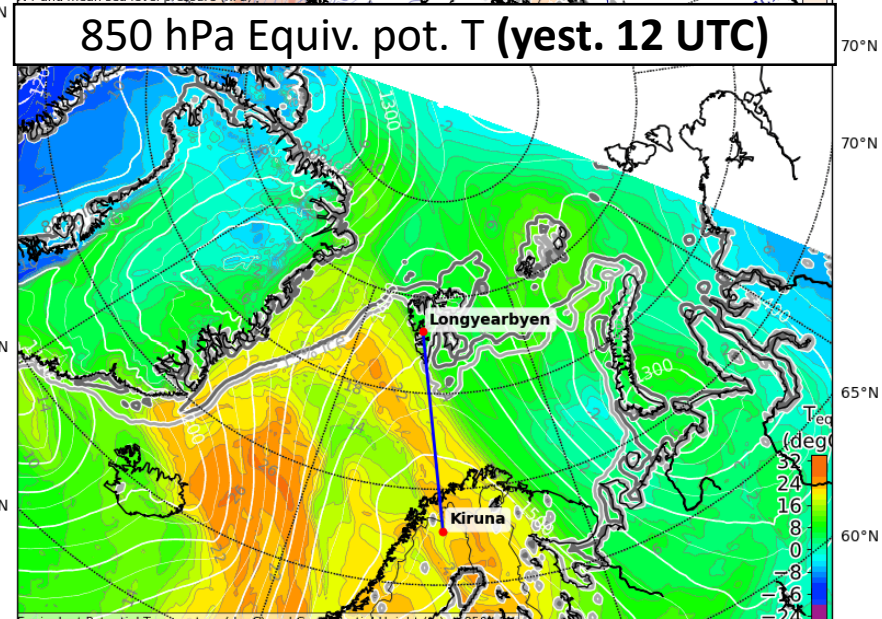
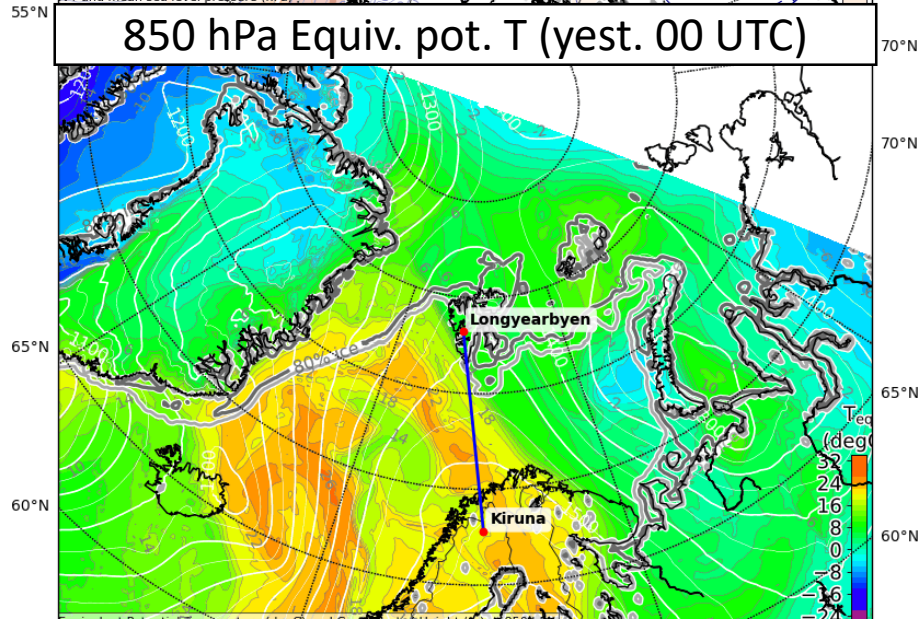
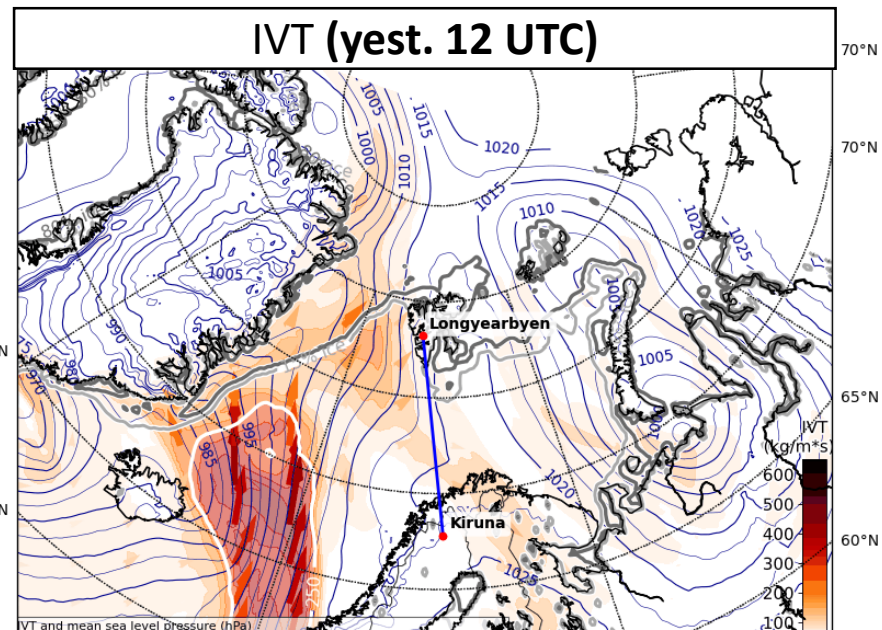
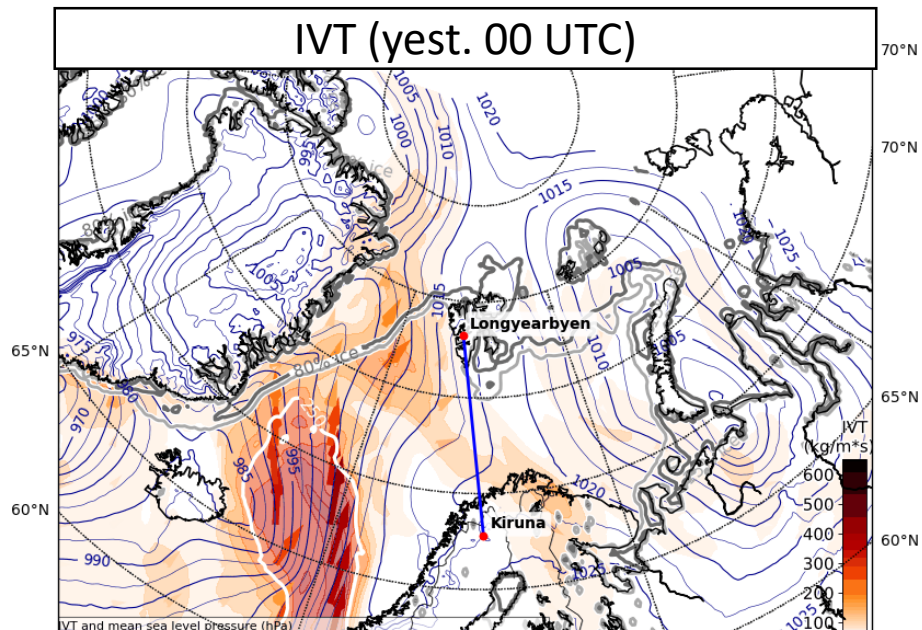
Sea level pressure (yest. 00 UTC)



Sea level pressure (yest. 12 UTC)

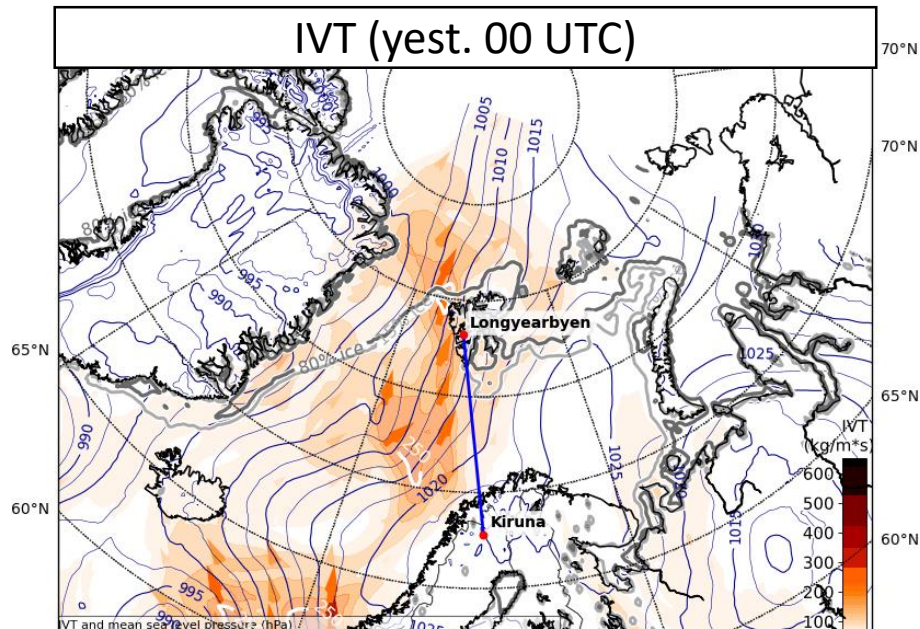


Sat, 2022-03-12 12 UTC (+60h)

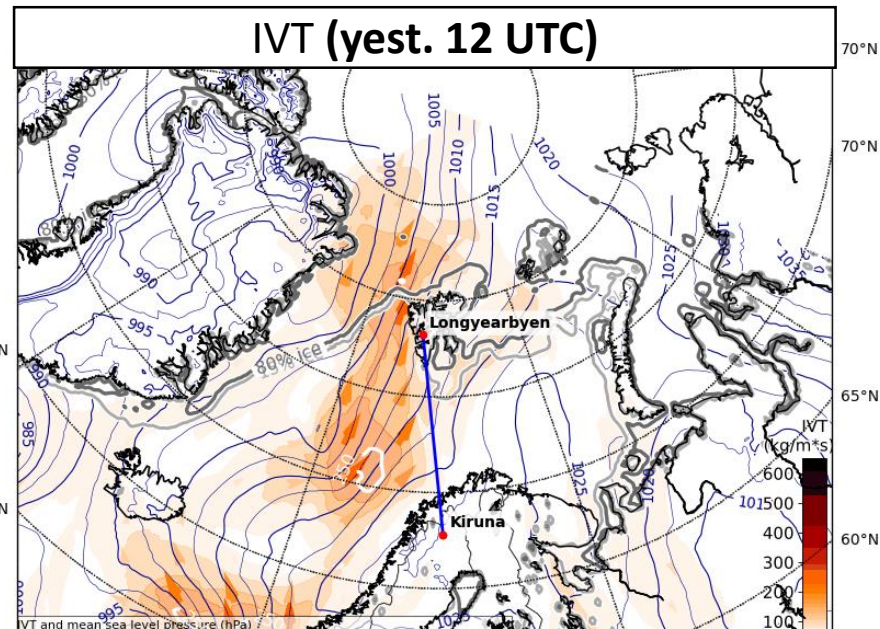


Sun, 2022-03-13 12 UTC (+84h)

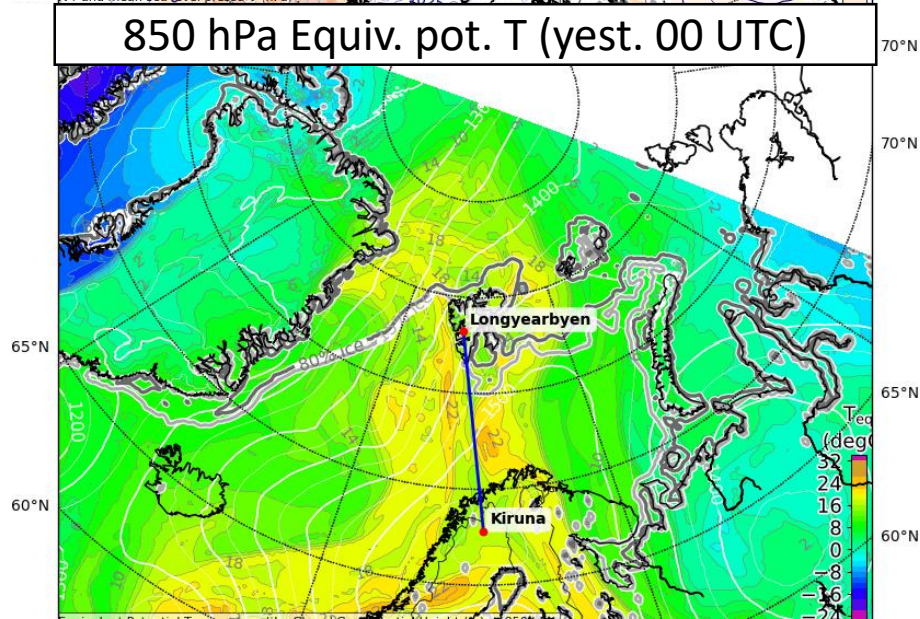
IVT (yest. 00 UTC)



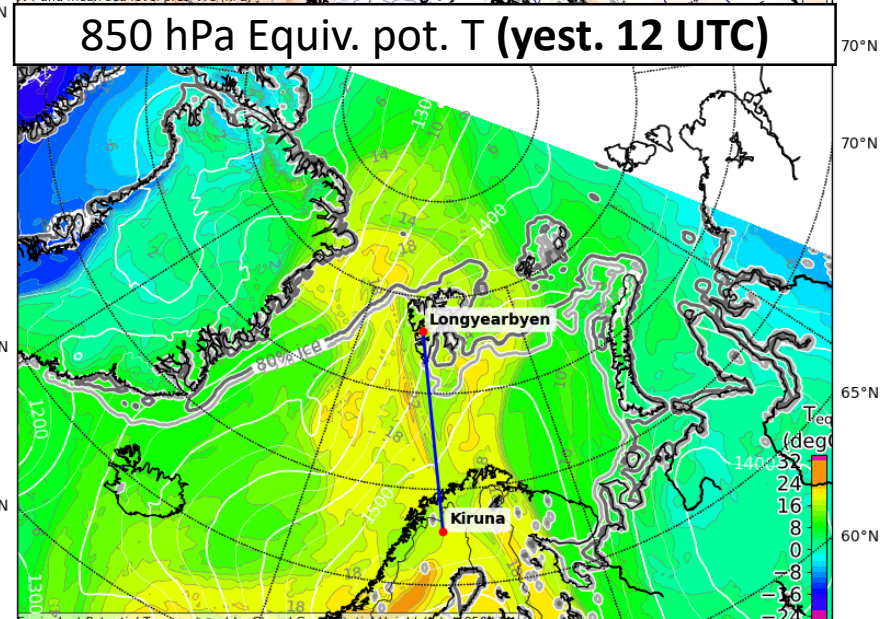
IVT (yest. 12 UTC)



850 hPa Equiv. pot. T (yest. 00 UTC)



850 hPa Equiv. pot. T (yest. 12 UTC)



Detailed outlook for Saturday & Sunday

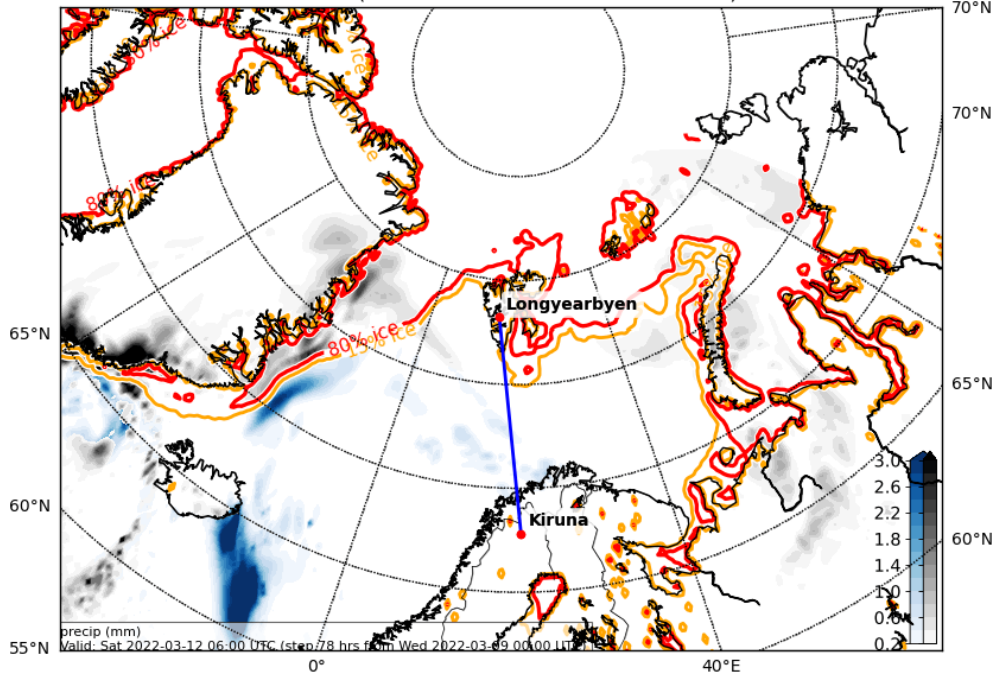
2022-03-09 12 UTC: 66 – 102h

500 hPa Geopot & T

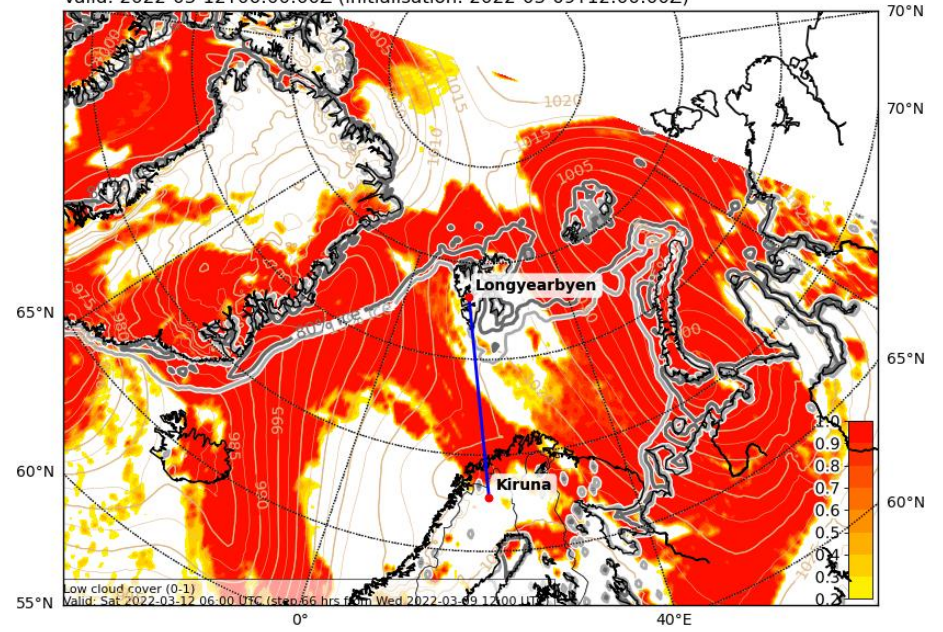
Sea level pressure

Sat, 2022-03-12 06 UTC

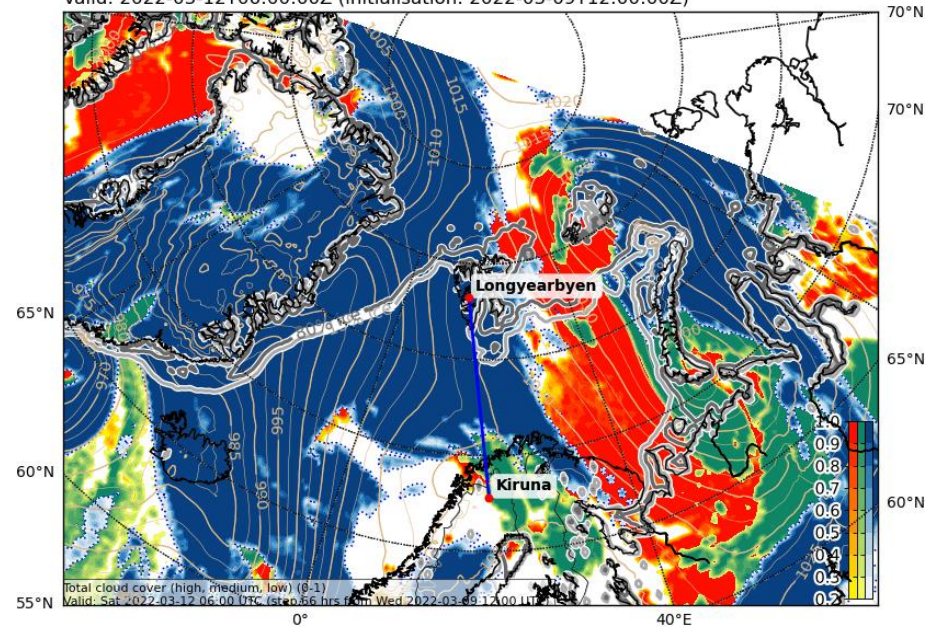
Precipitation, instantaneous (mm water eq.). Rain-blue, snow-black
Valid: 2022-03-12T06:00:00Z (initialisation: 2022-03-09T00:00:00Z)



Cloud Cover (0-1) and Mean Sea Level Pressure (hPa) (LOW)
Valid: 2022-03-12T06:00:00Z (initialisation: 2022-03-09T12:00:00Z)

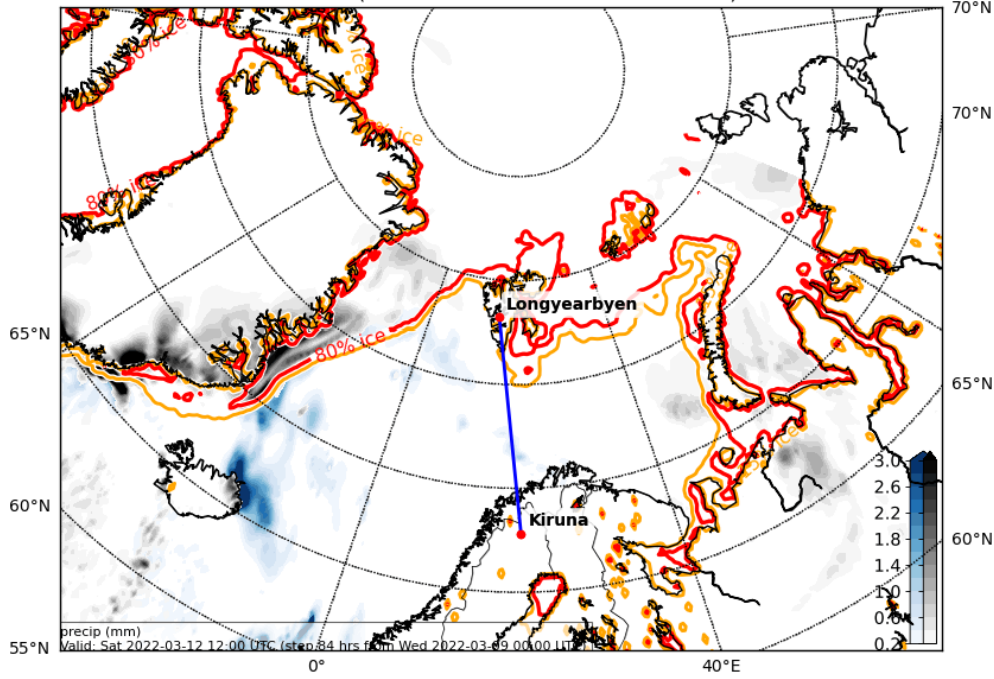


Cloud Cover (0-1) and Mean Sea Level Pressure (hPa) (TOT)
Valid: 2022-03-12T06:00:00Z (initialisation: 2022-03-09T12:00:00Z)

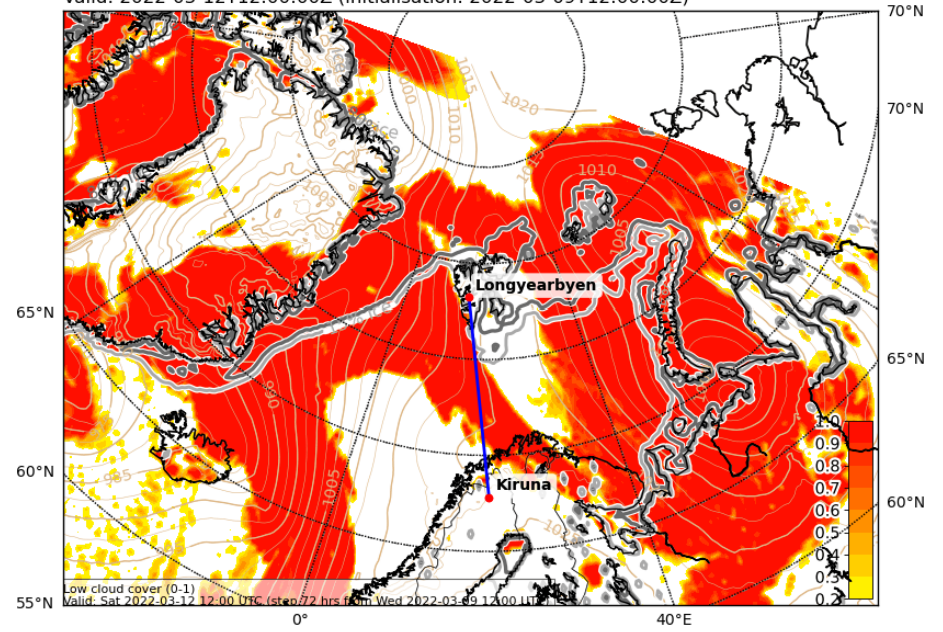


Sat, 2022-03-12 12 UTC

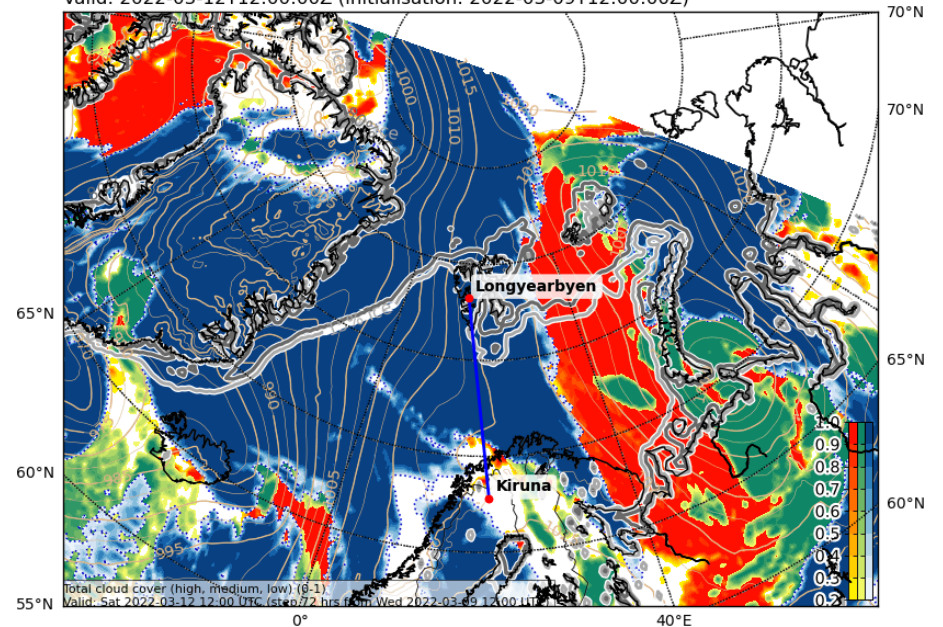
Precipitation, instantaneous (mm water eq.). Rain-blue, snow-black
Valid: 2022-03-12T12:00:00Z (initialisation: 2022-03-09T00:00:00Z)



Cloud Cover (0-1) and Mean Sea Level Pressure (hPa) (LOW)
Valid: 2022-03-12T12:00:00Z (initialisation: 2022-03-09T12:00:00Z)

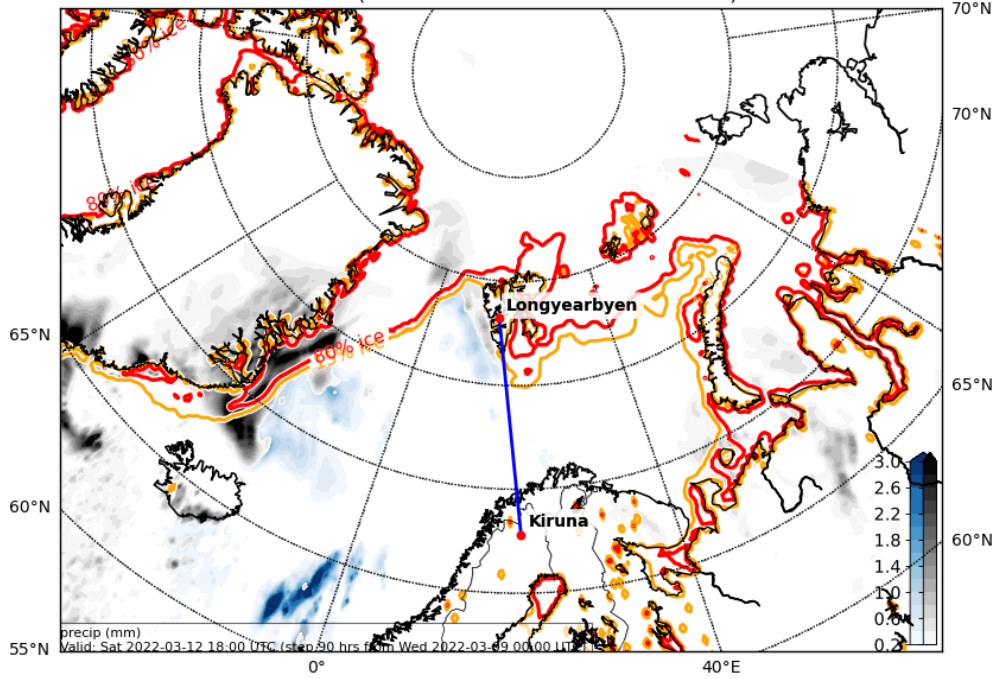


Cloud Cover (0-1) and Mean Sea Level Pressure (hPa) (TOT)
Valid: 2022-03-12T12:00:00Z (initialisation: 2022-03-09T12:00:00Z)

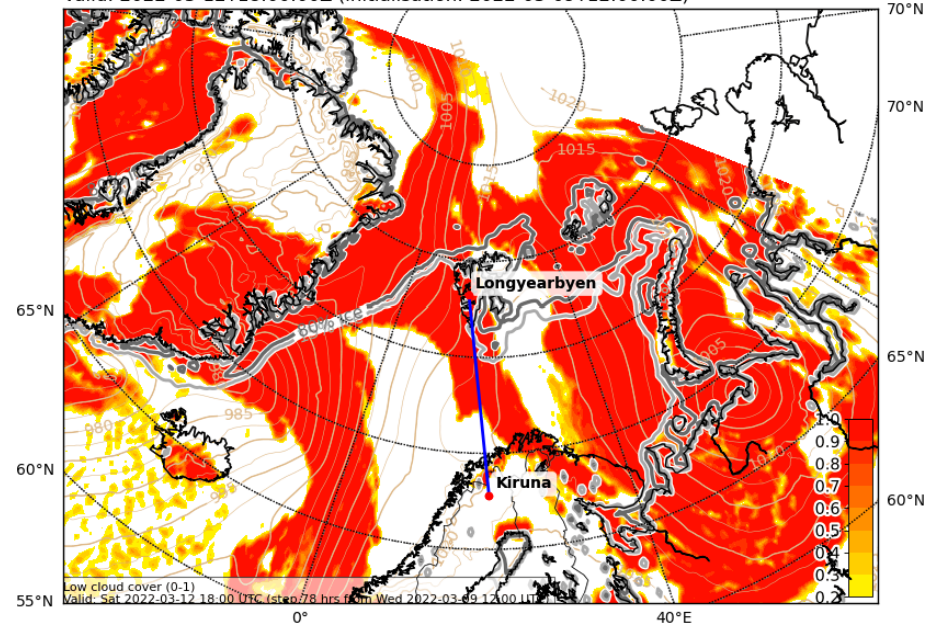


Sat, 2022-03-12 18 UTC

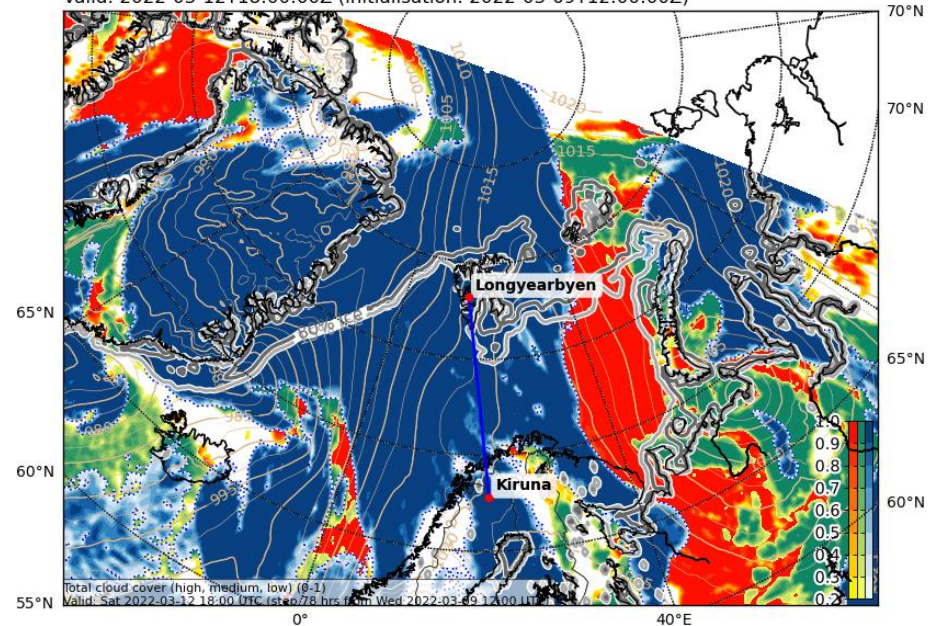
Precipitation, instantaneous (mm water eq.). Rain-blue, snow-black
Valid: 2022-03-12T18:00:00Z (initialisation: 2022-03-09T00:00:00Z)



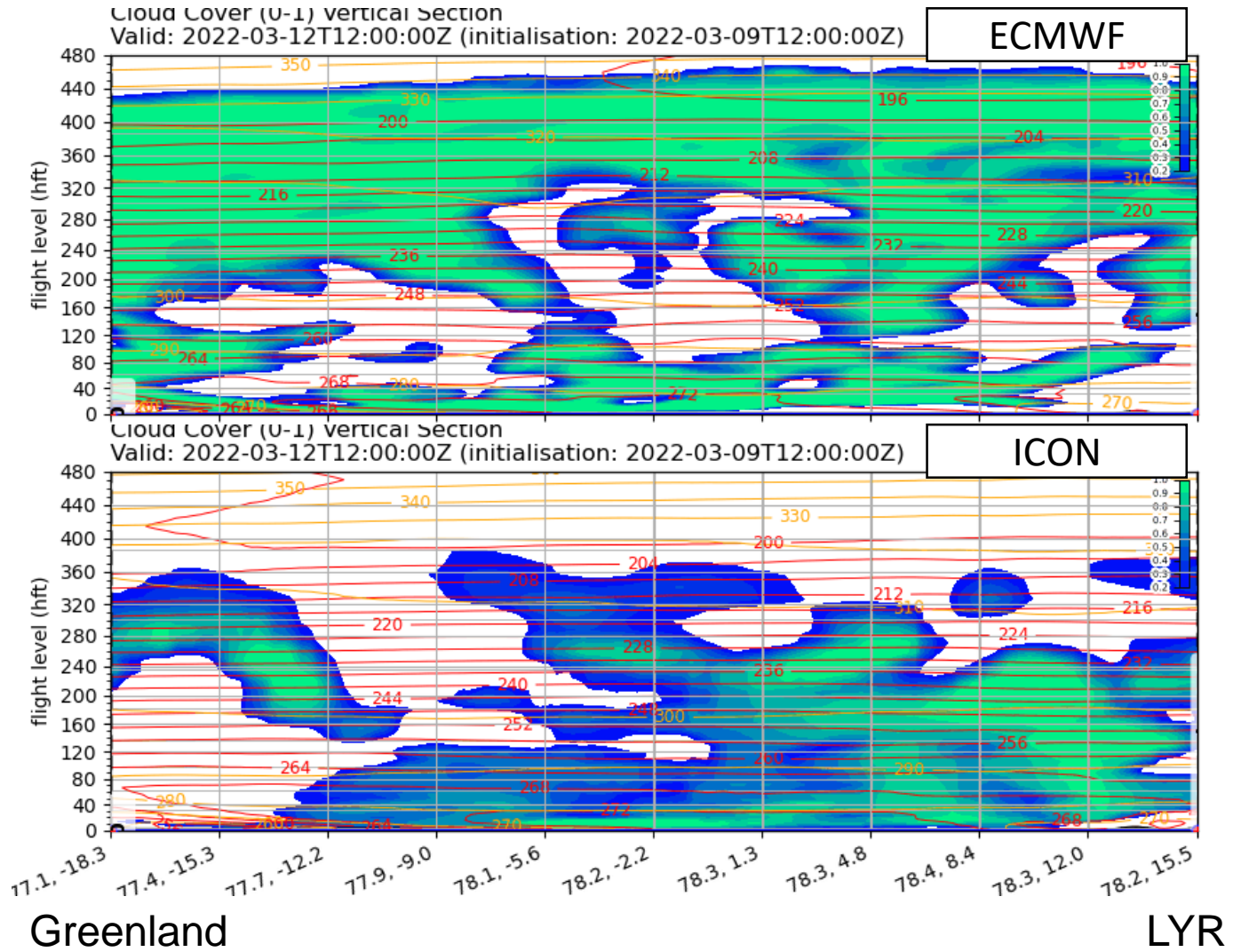
Cloud Cover (0-1) and Mean Sea Level Pressure (hPa) (LOW)
Valid: 2022-03-12T18:00:00Z (initialisation: 2022-03-09T12:00:00Z)



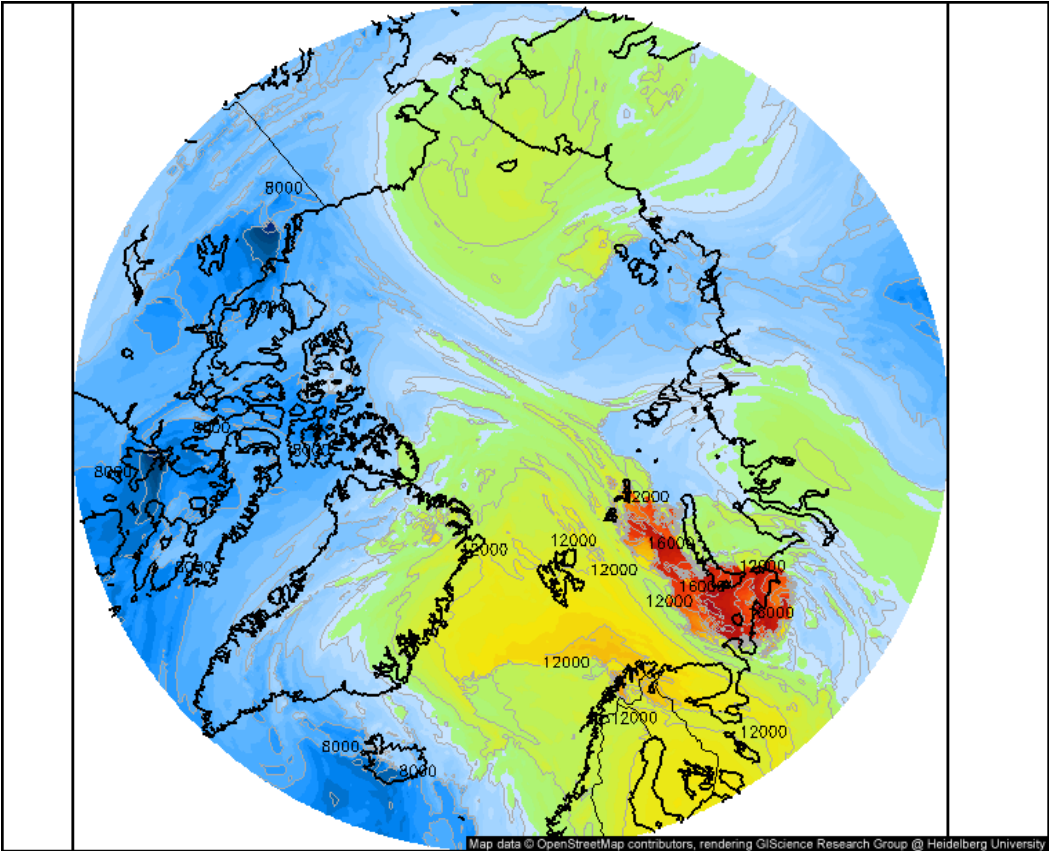
Cloud Cover (0-1) and Mean Sea Level Pressure (hPa) (TOT)
Valid: 2022-03-12T18:00:00Z (initialisation: 2022-03-09T12:00:00Z)



Sat, 2022-03-12 12 UTC

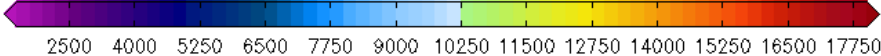


Sat, 2022-03-12 12 UTC



Tropopause height (m)

Valid for
Sat 03/12/2022, 12:00pm GMT

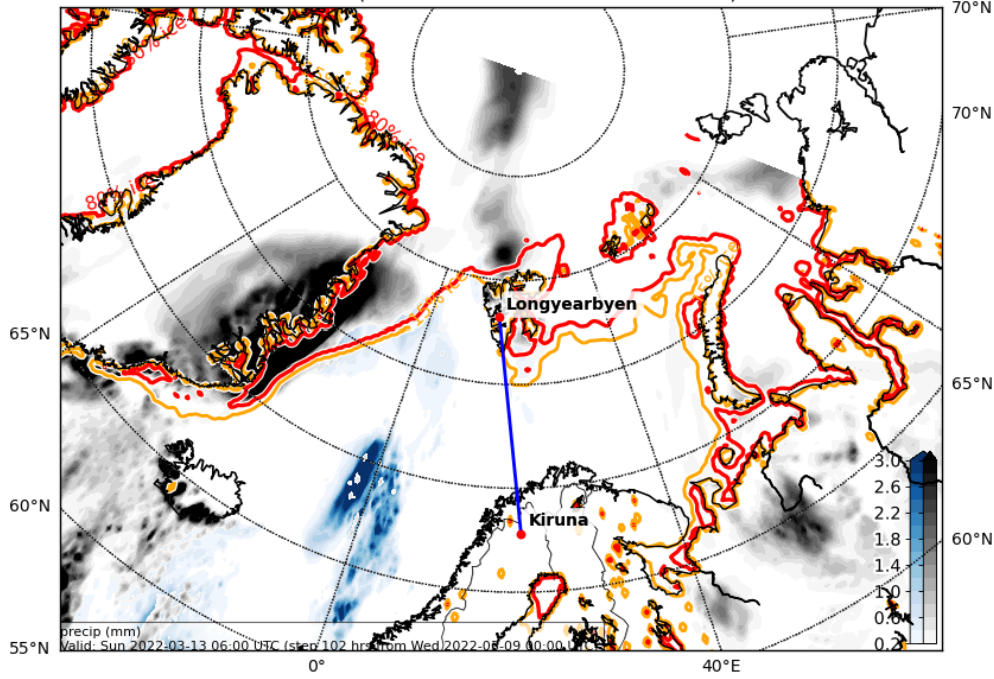


North Pole
GFS (15 days) from 03/09/2022/12z

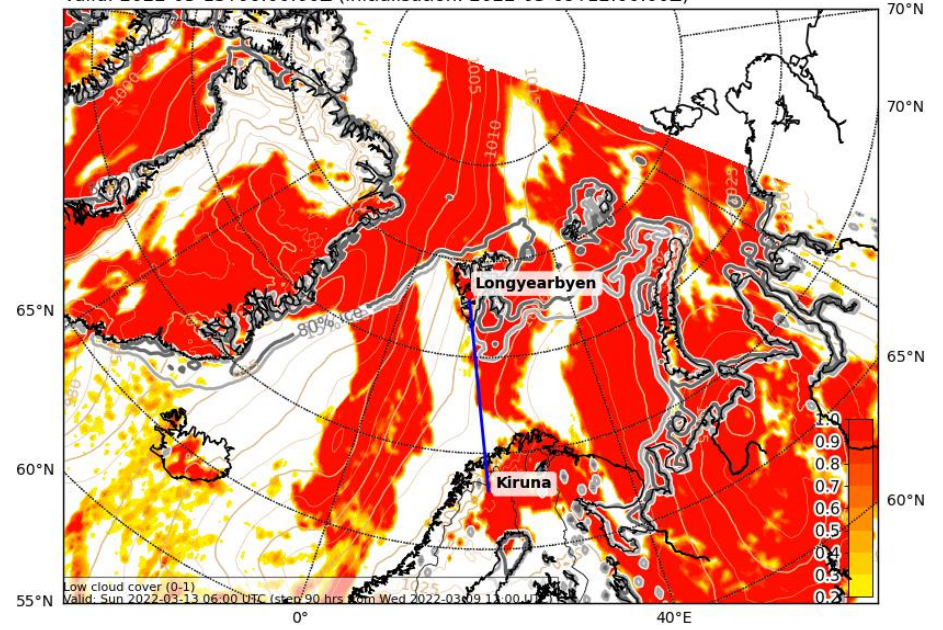
 meteologix.com

Sun, 2022-03-13 06 UTC

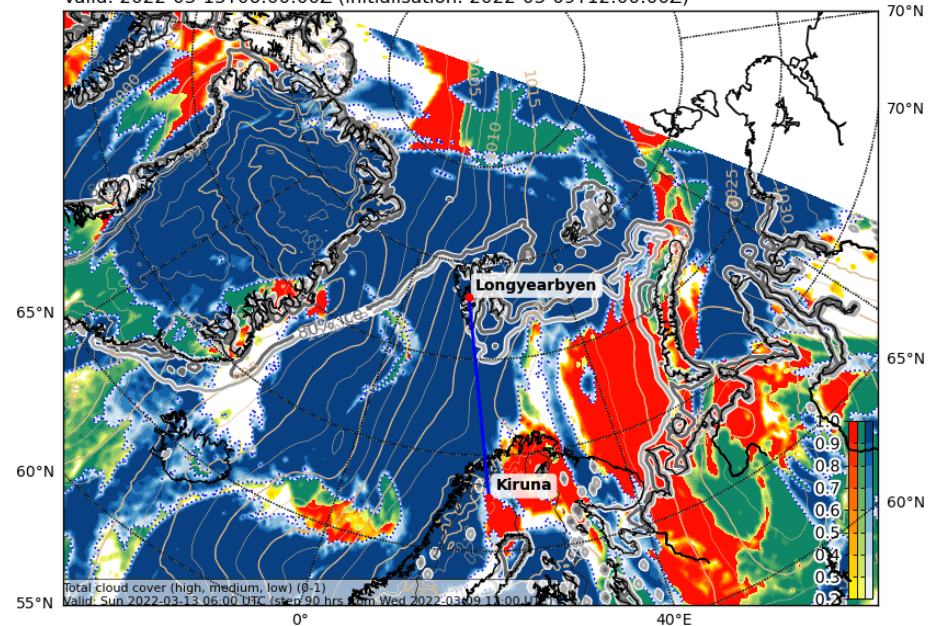
Precipitation, instantaneous (mm water eq.). Rain-blue, snow-black
Valid: 2022-03-13T06:00:00Z (initialisation: 2022-03-09T00:00:00Z)



Cloud Cover (0-1) and Mean Sea Level Pressure (hPa) (LOW)
Valid: 2022-03-13T06:00:00Z (initialisation: 2022-03-09T12:00:00Z)

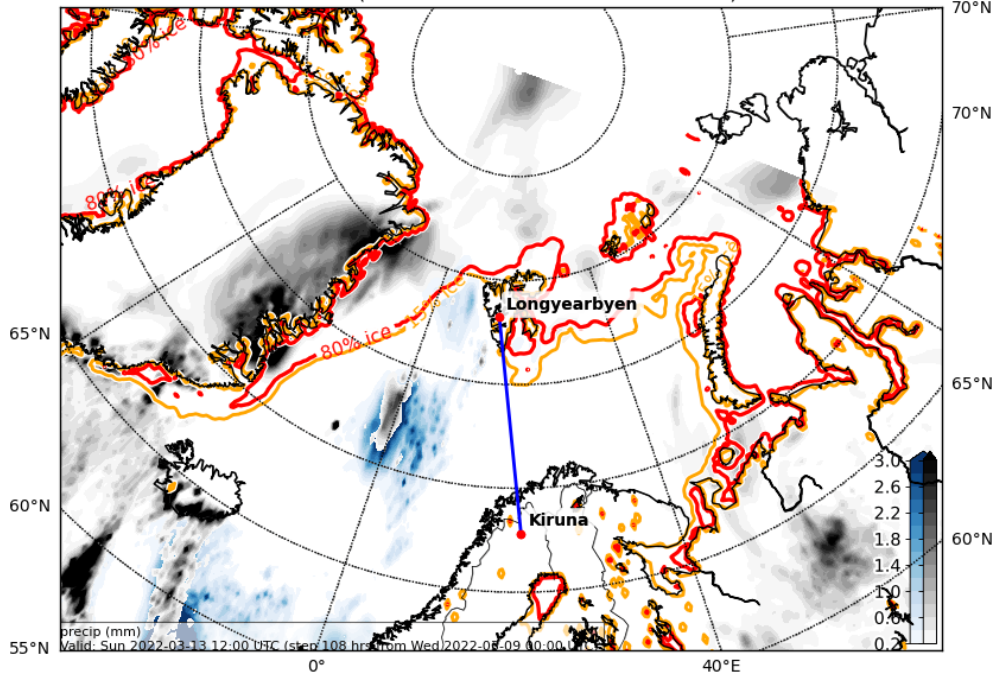


Cloud Cover (0-1) and Mean Sea Level Pressure (hPa) (TOT)
Valid: 2022-03-13T06:00:00Z (initialisation: 2022-03-09T12:00:00Z)

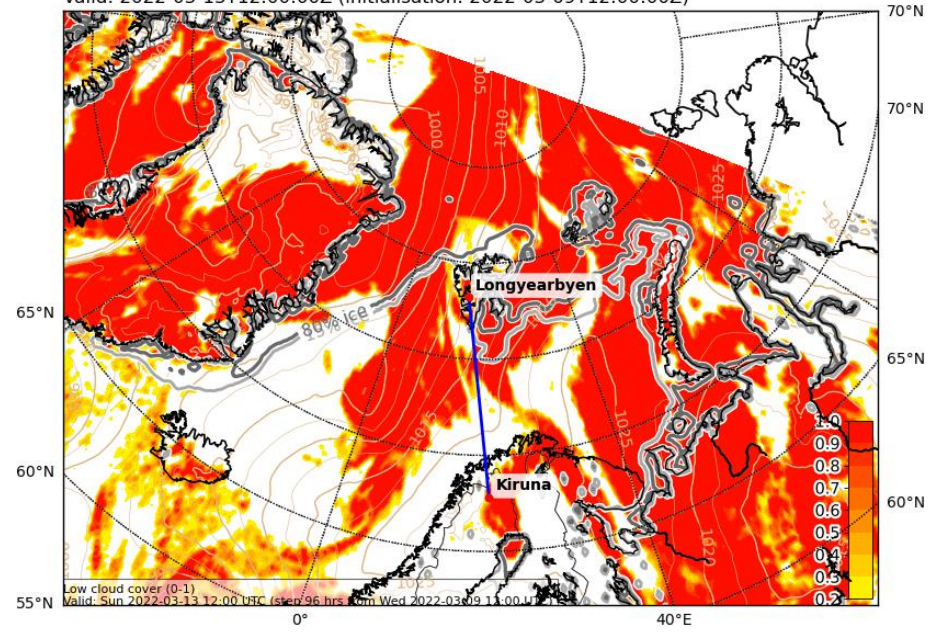


Sun, 2022-03-13 12 UTC

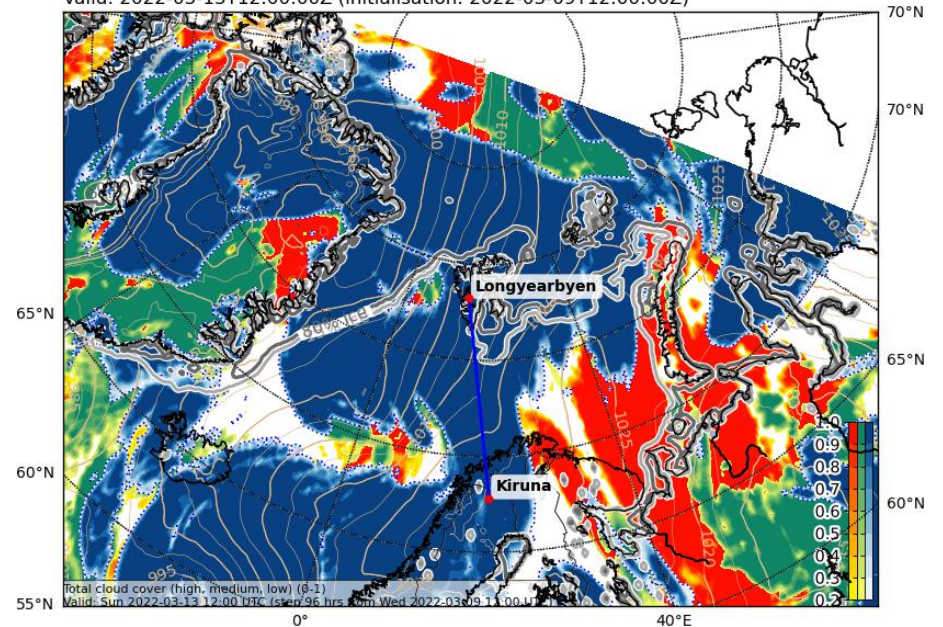
Precipitation, instantaneous (mm water eq.). Rain-blue, snow-black
Valid: 2022-03-13T12:00:00Z (initialisation: 2022-03-09T00:00:00Z)



Cloud Cover (0-1) and Mean Sea Level Pressure (hPa) (LOW)
Valid: 2022-03-13T12:00:00Z (initialisation: 2022-03-09T12:00:00Z)

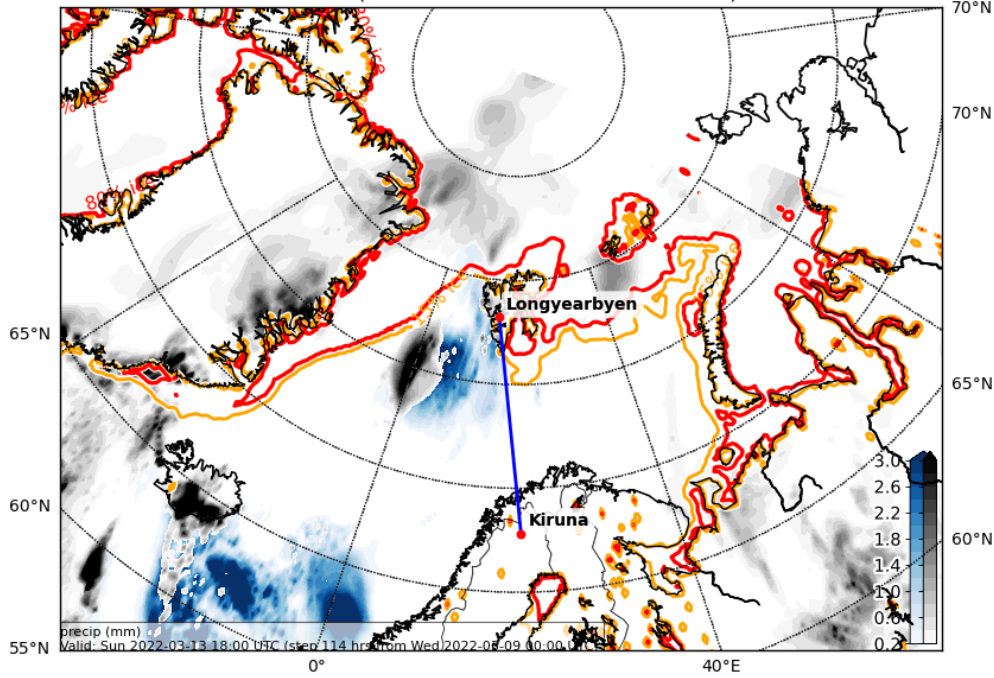


Cloud Cover (0-1) and Mean Sea Level Pressure (hPa) (TOT)
Valid: 2022-03-13T12:00:00Z (initialisation: 2022-03-09T12:00:00Z)

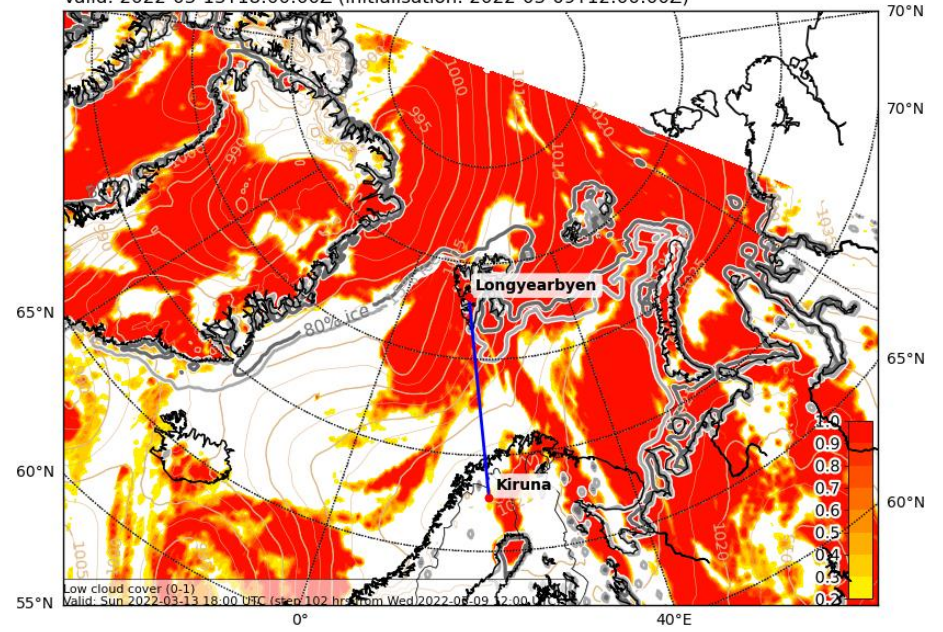


Sun, 2022-03-13 18 UTC

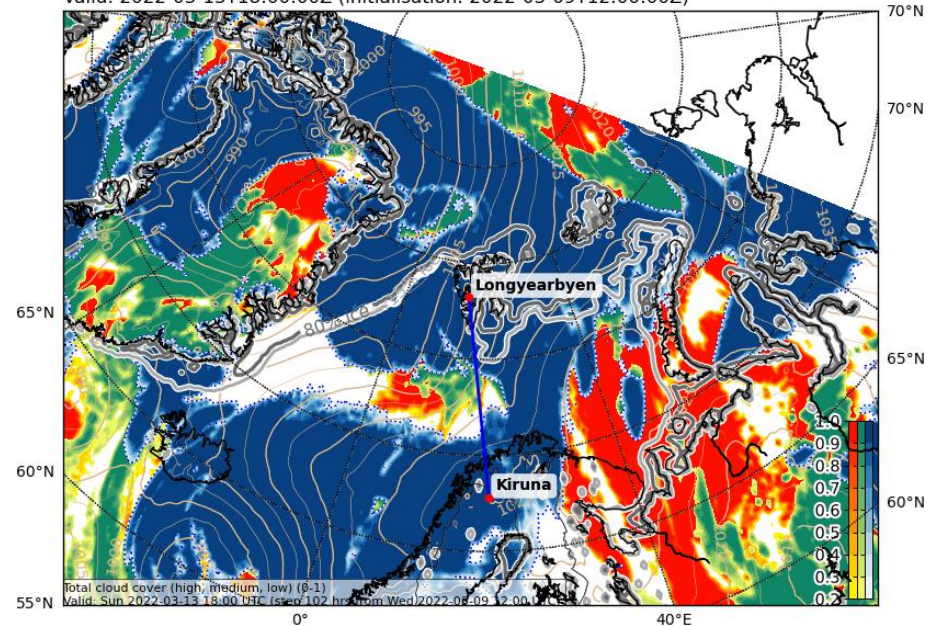
Precipitation, instantaneous (mm water eq.). Rain-blue, snow-black
Valid: 2022-03-13T18:00:00Z (initialisation: 2022-03-09T00:00:00Z)



Cloud Cover (0-1) and Mean Sea Level Pressure (hPa) (LOW)
Valid: 2022-03-13T18:00:00Z (initialisation: 2022-03-09T12:00:00Z)

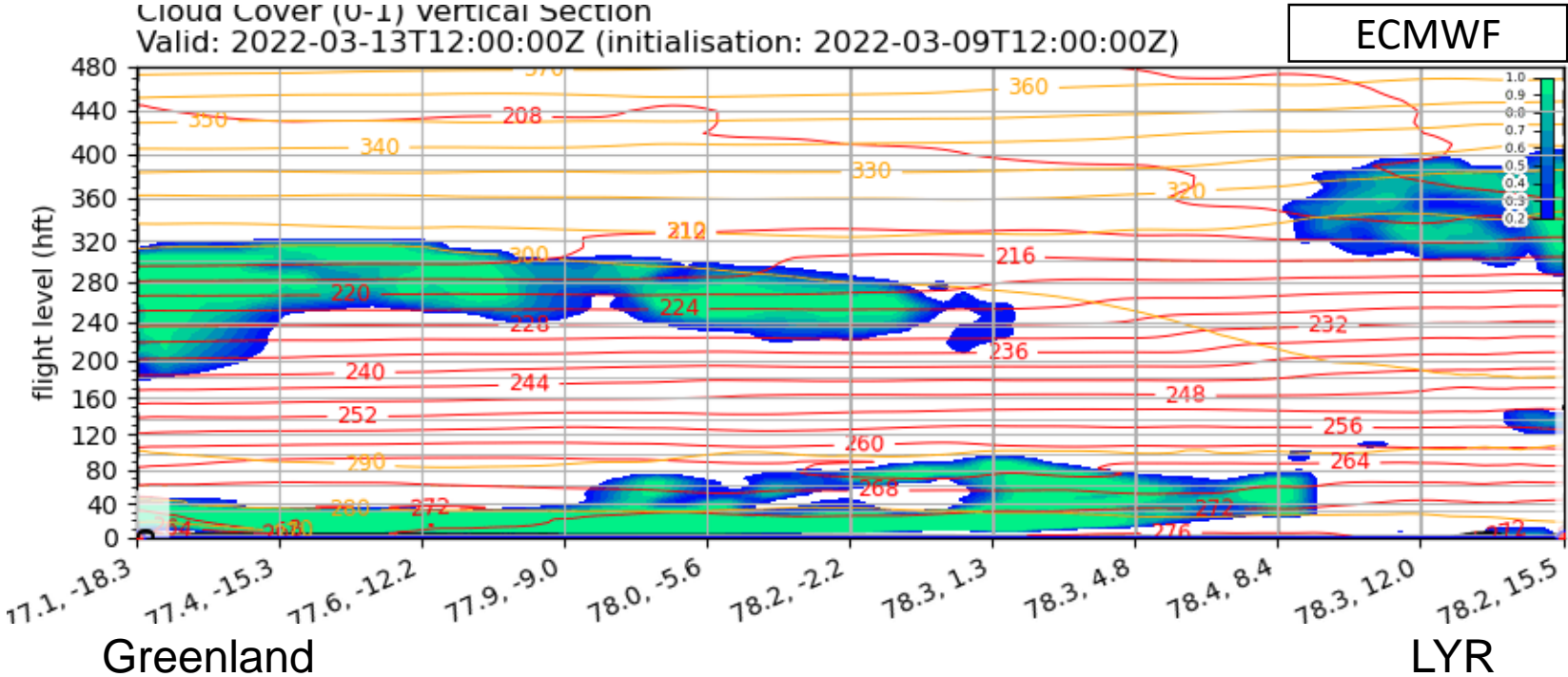


Cloud Cover (0-1) and Mean Sea Level Pressure (hPa) (TOT)
Valid: 2022-03-13T18:00:00Z (initialisation: 2022-03-09T12:00:00Z)



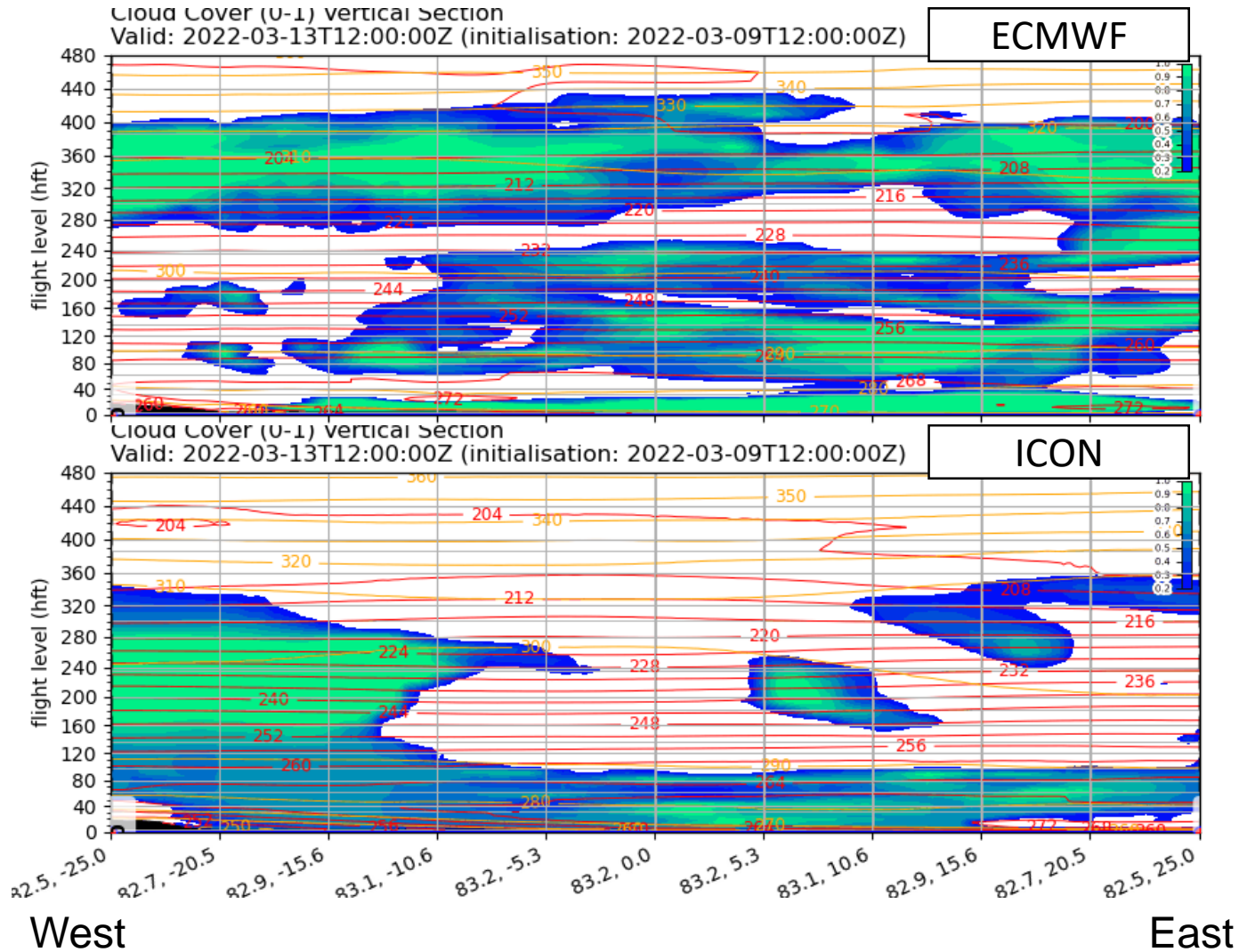
Sun, 2022-03-13 12 UTC

78°N



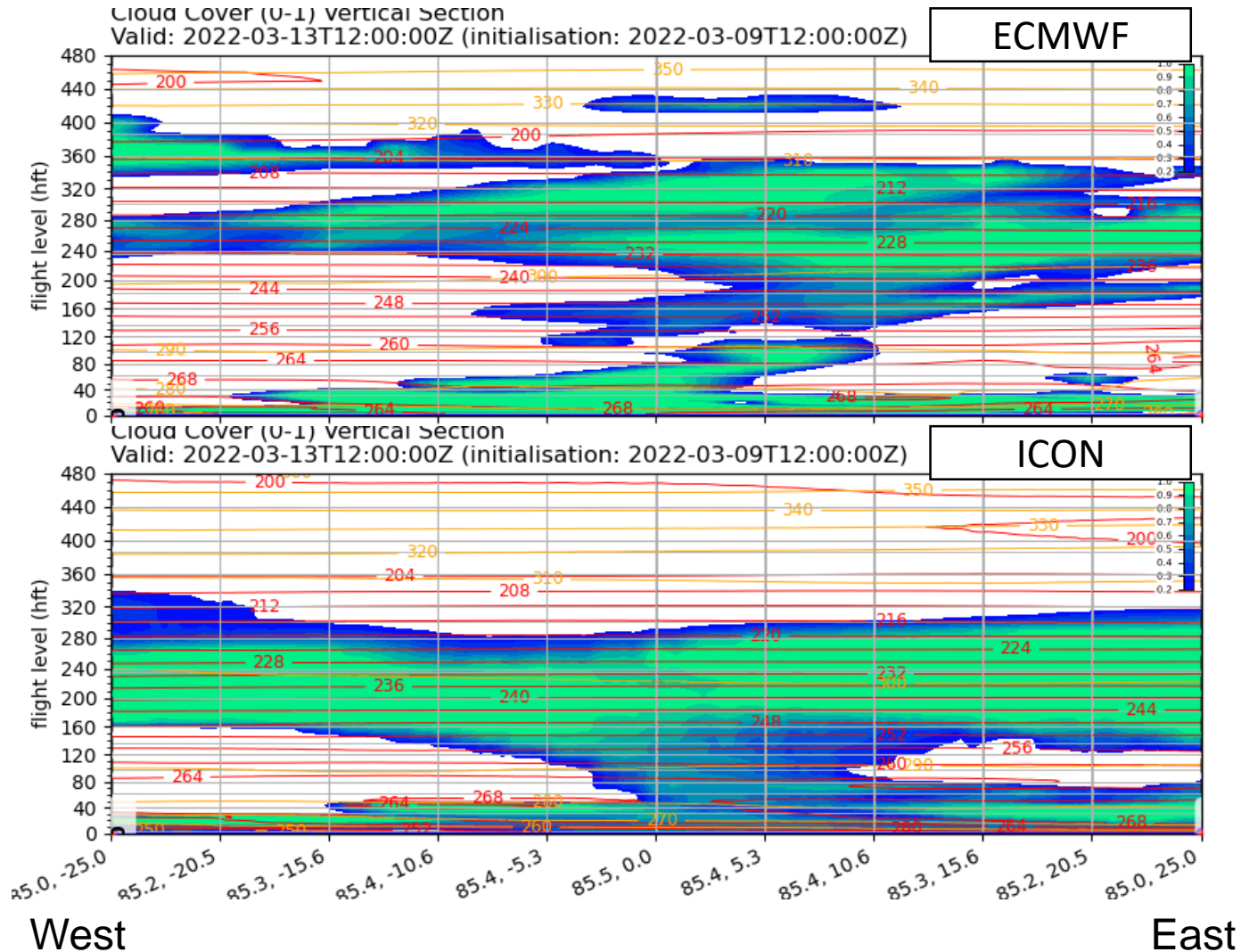
Sun, 2022-03-13 12 UTC

82.5°N



Sun, 2022-03-13 12 UTC

85°N



Summary

Summary: Weather Update 2022-03-10, 09:00 LT

- **Saturday, 2022-03-12:**
 - Only minor changes compared to 00 UTC forecast
 - Larger θ_E (warmer/moister air) than in 00 run north-east of Iceland, slightly lower θ_E (and weakened WAI) in Fram Strait
 - Anomalously high tropopause
 - Discrepancy of cloud cover in flight altitude between models
- **Sunday, 2022-03-13:**
 - Slight position change of pressure systems
 - Broader band of IVT over Fram Strait
 - Larger θ_E over sea ice
 - Warm air intrusion through Fram Strait reaching the North pole with precipitation