

Weather update HALO-(AC)³

Sunday, 2022-03-20, 09:00 LT

Surface wind development and precipitation

2022-03-19 12 UTC: 45 – 96h

ECMWF

2022-03-20 00 UTC: 33 – 84h

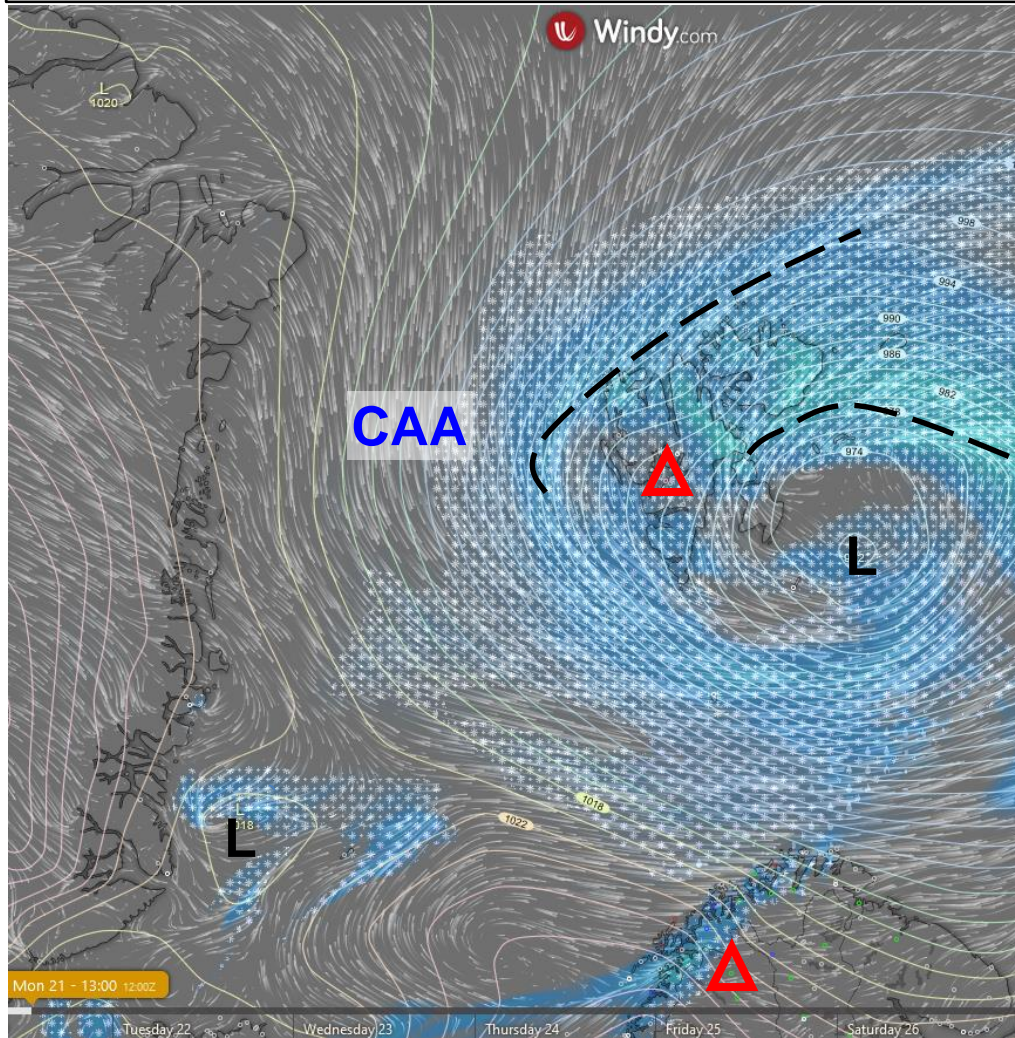
ICON

CAA: Cold Air Advection

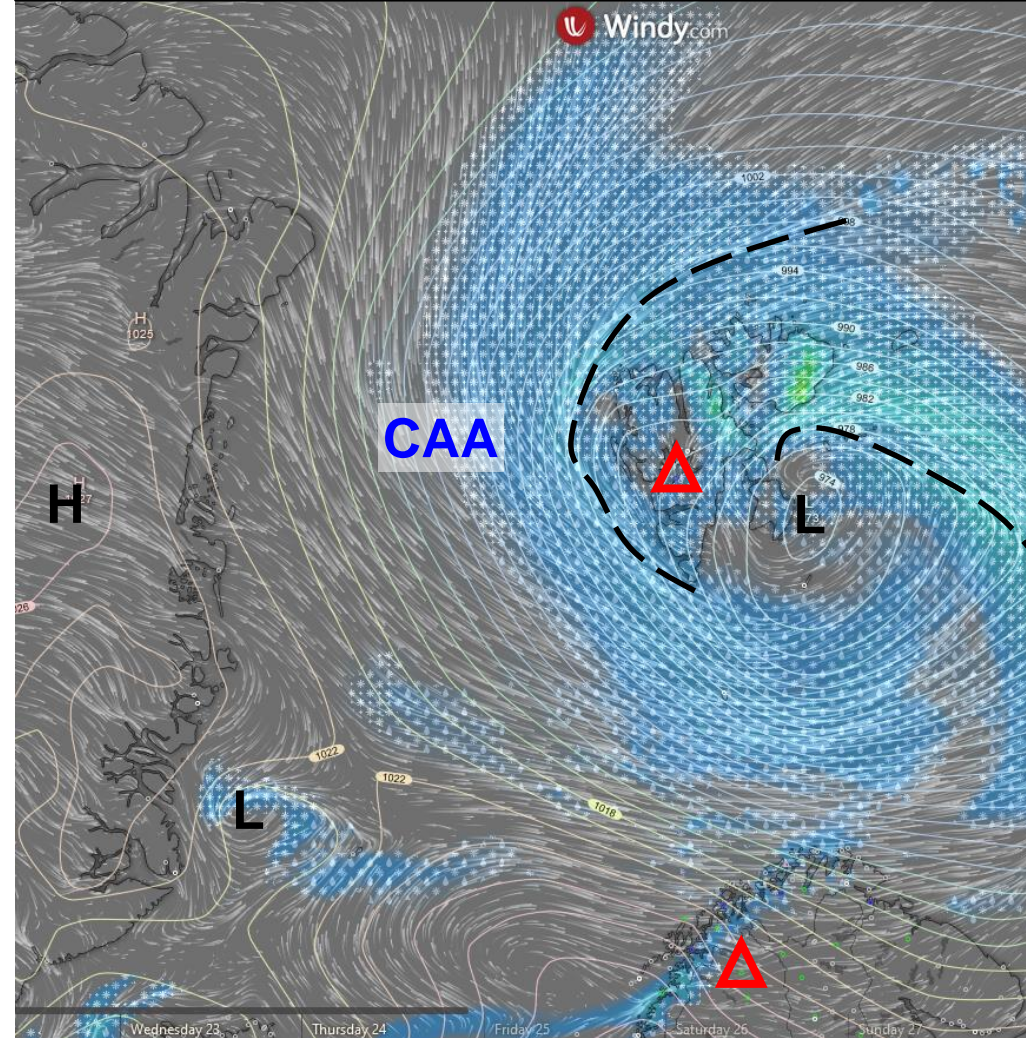
WAA: Warm Air Advection

Monday, 2022-03-21 12 UTC (+60h)

ECMWF

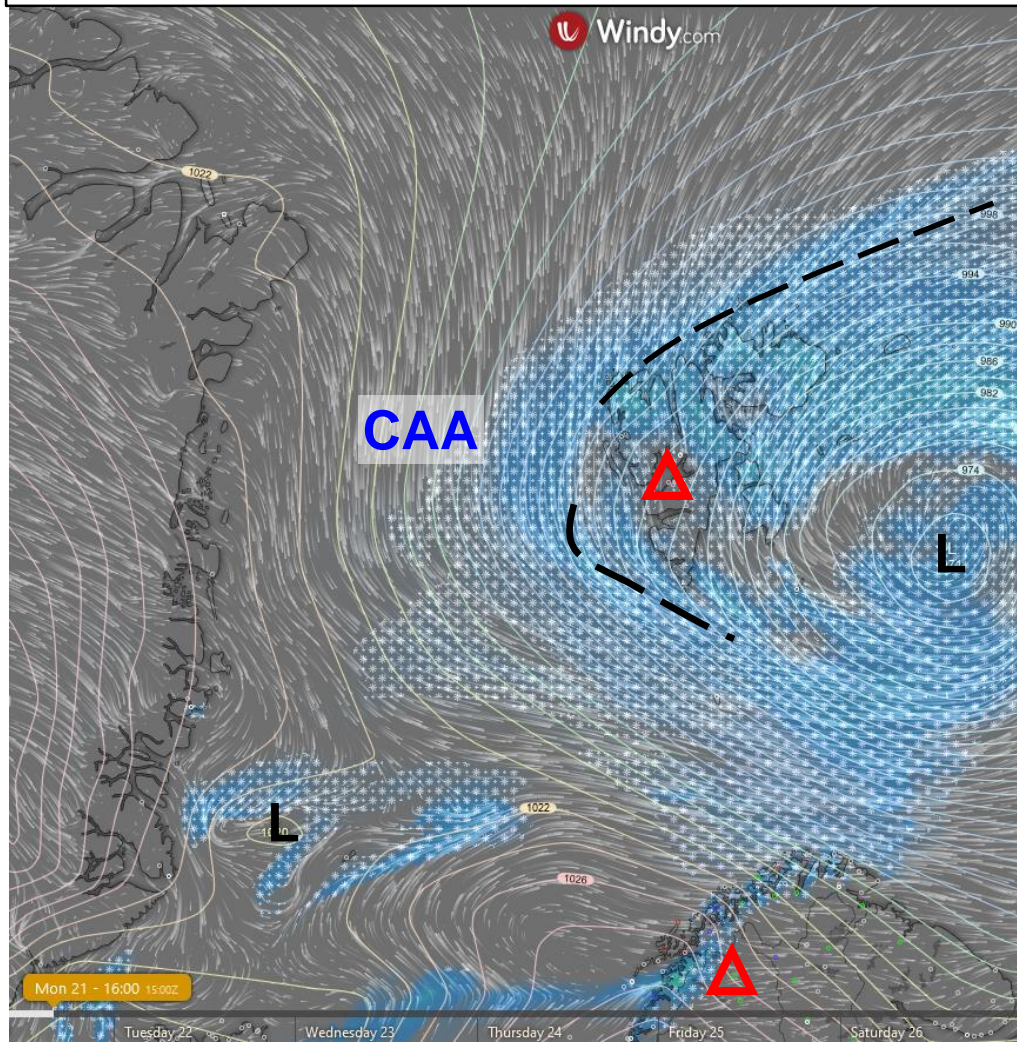


ICON

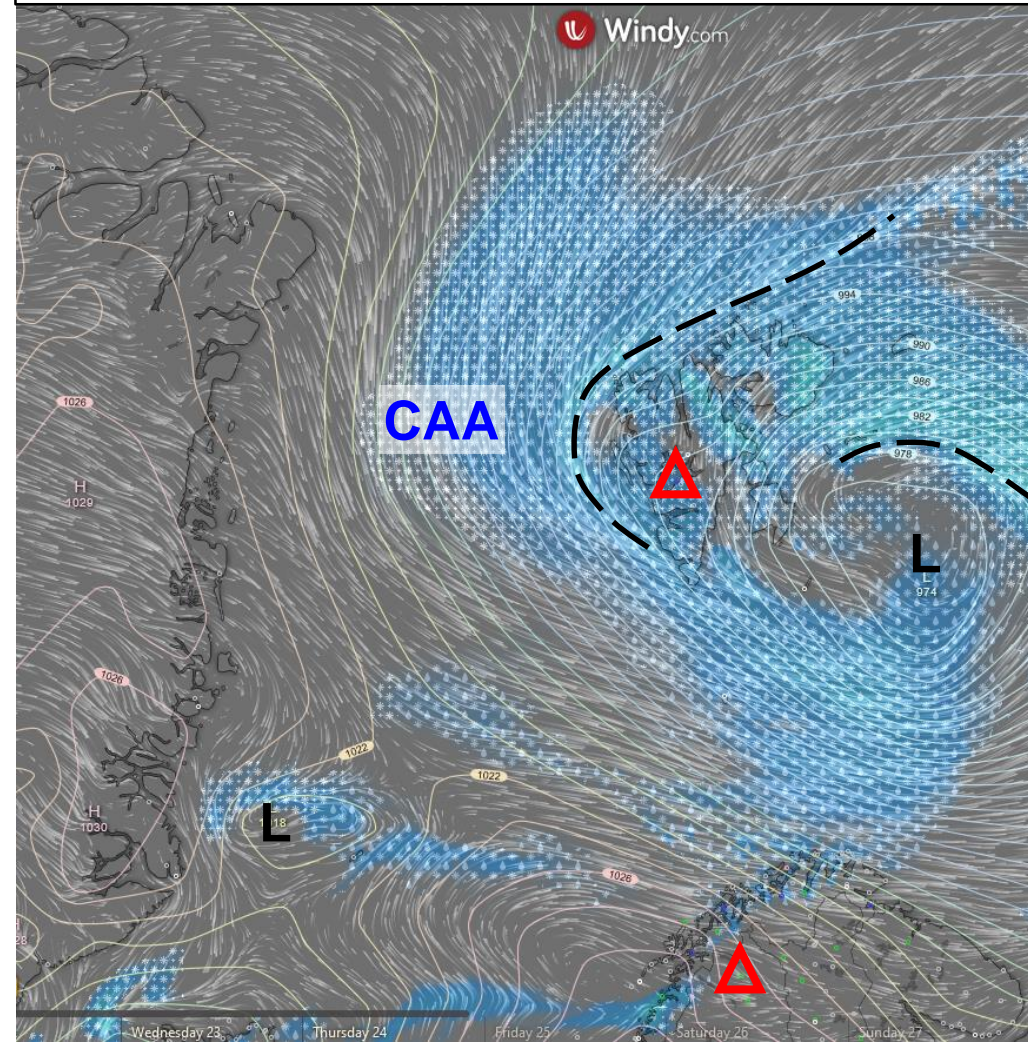


Monday, 2022-03-21 15 UTC (+63h)

ECMWF

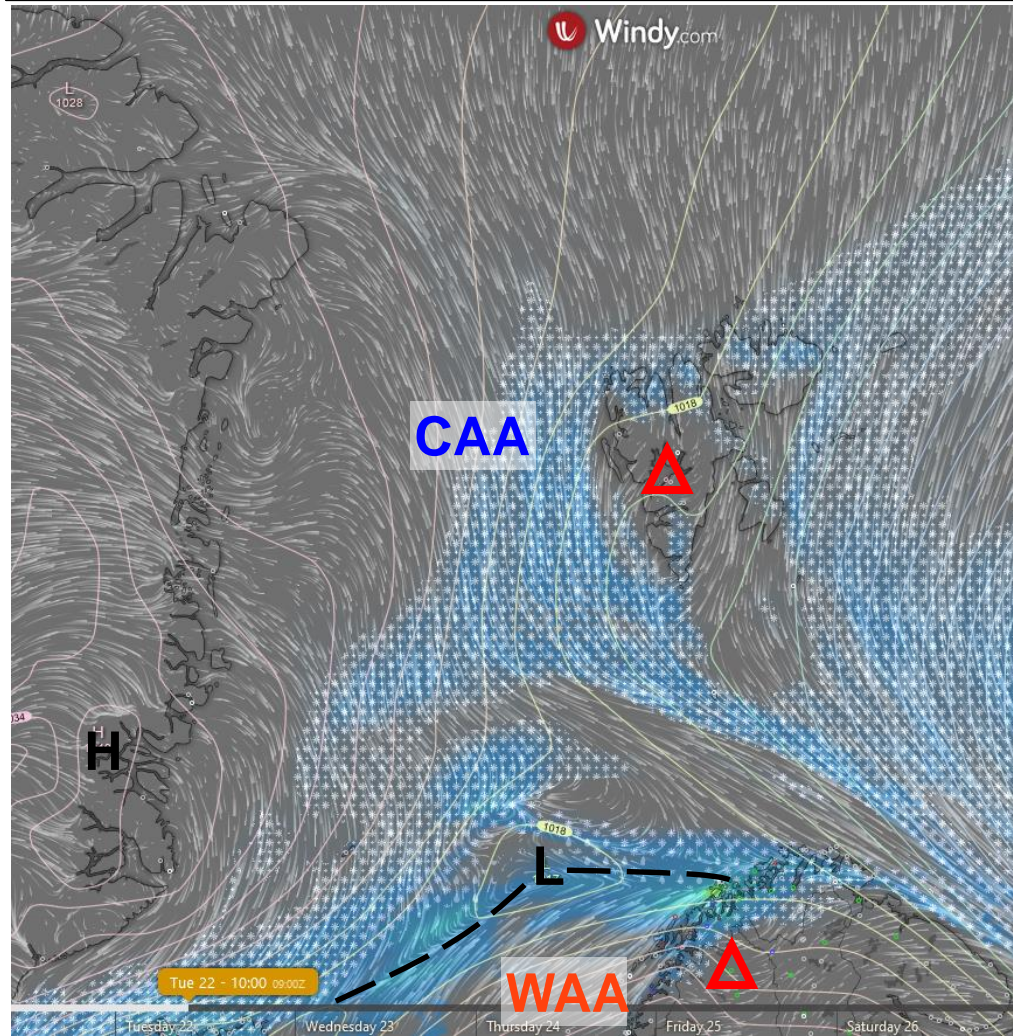


ICON

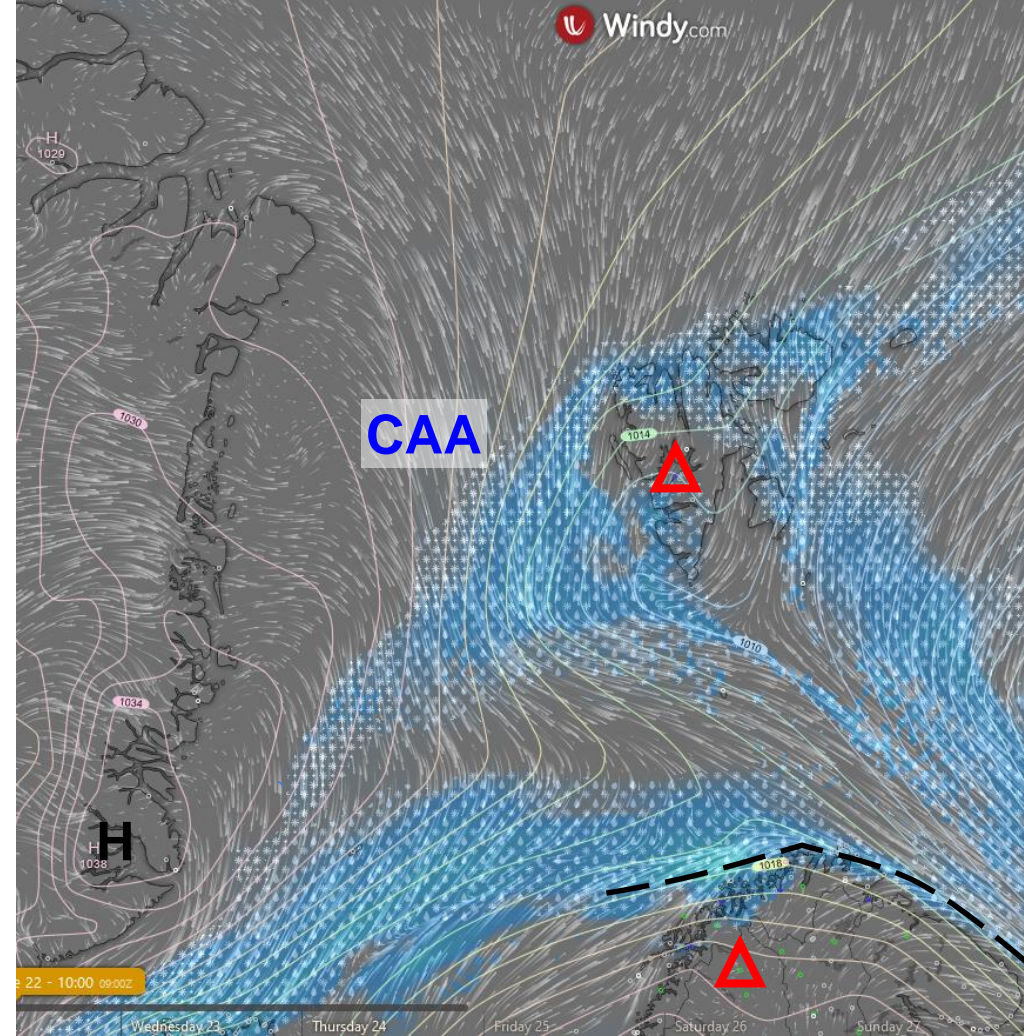


Tuesday, 2022-03-22 09 UTC (+78h)

ECMWF

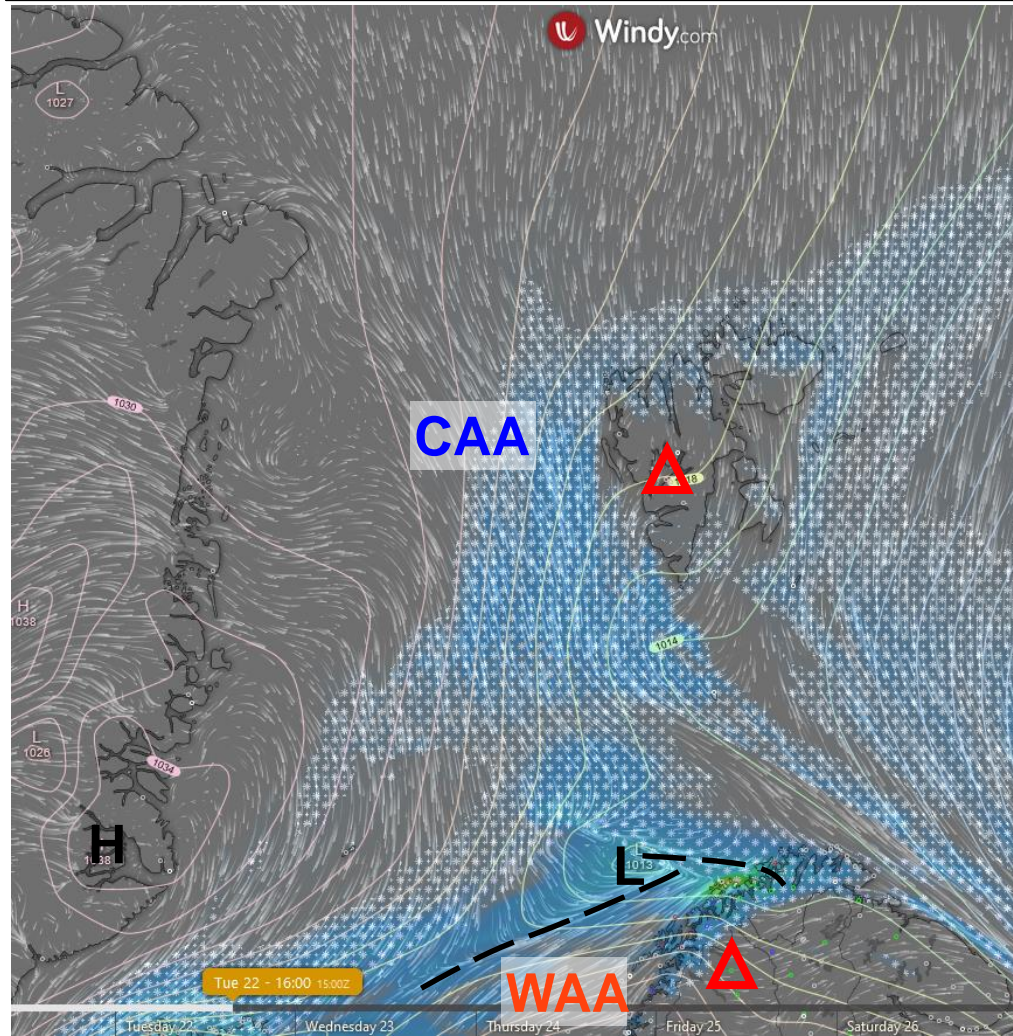


ICON

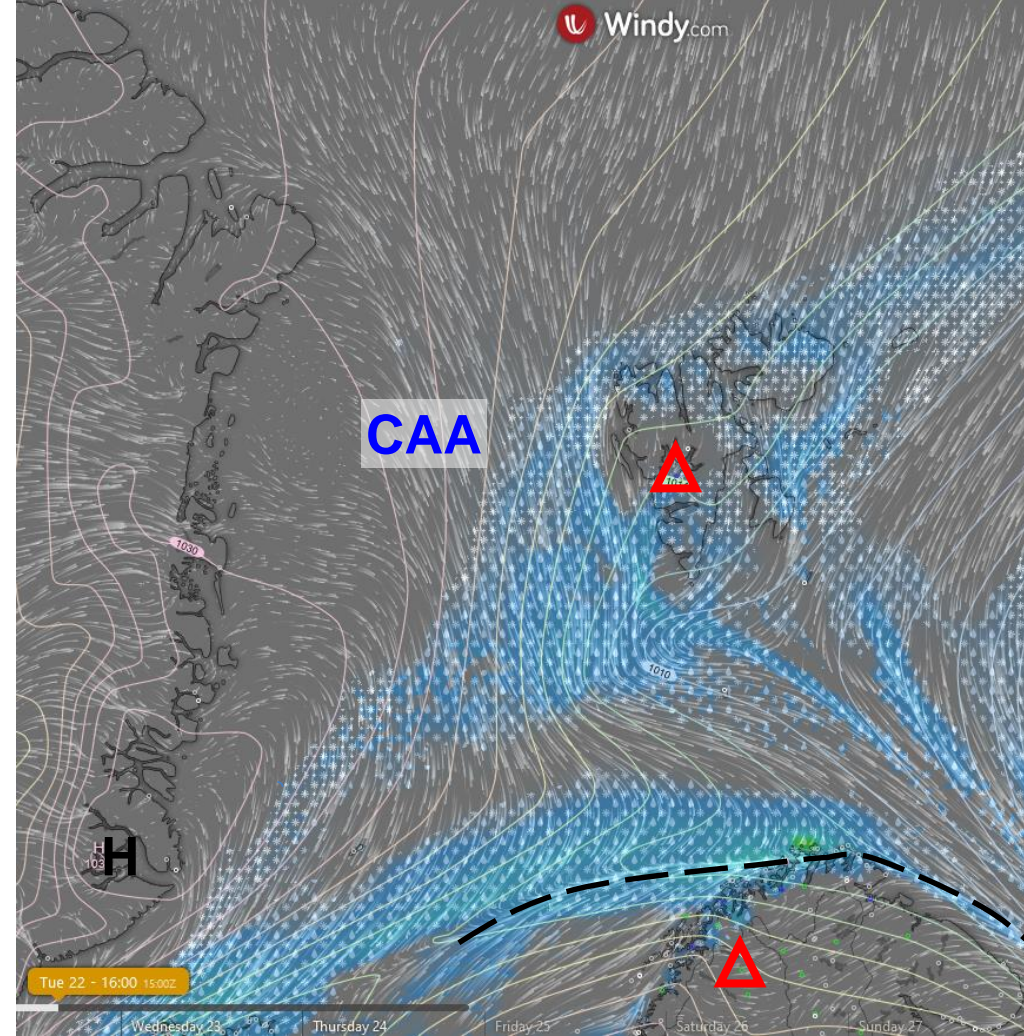


Tuesday, 2022-03-22 15 UTC (+84h)

ECMWF

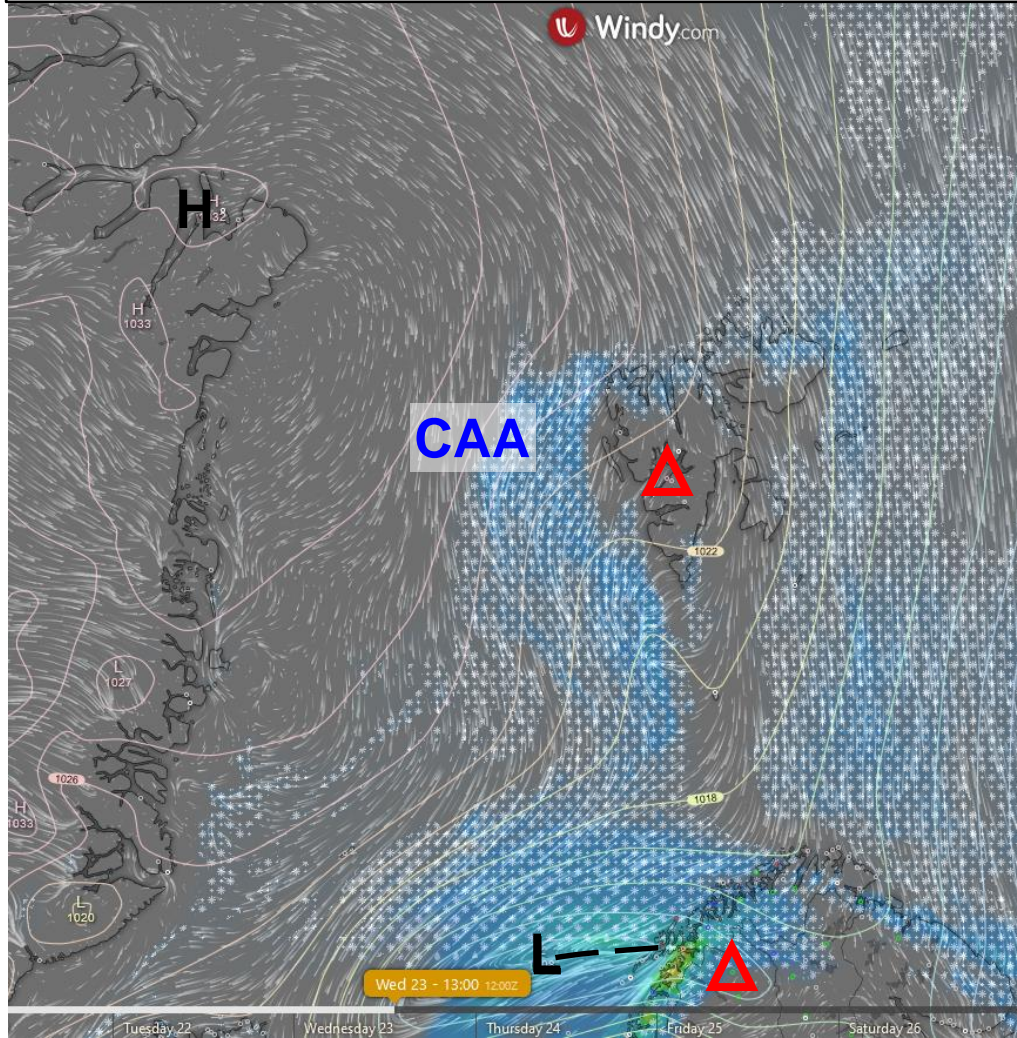


ICON

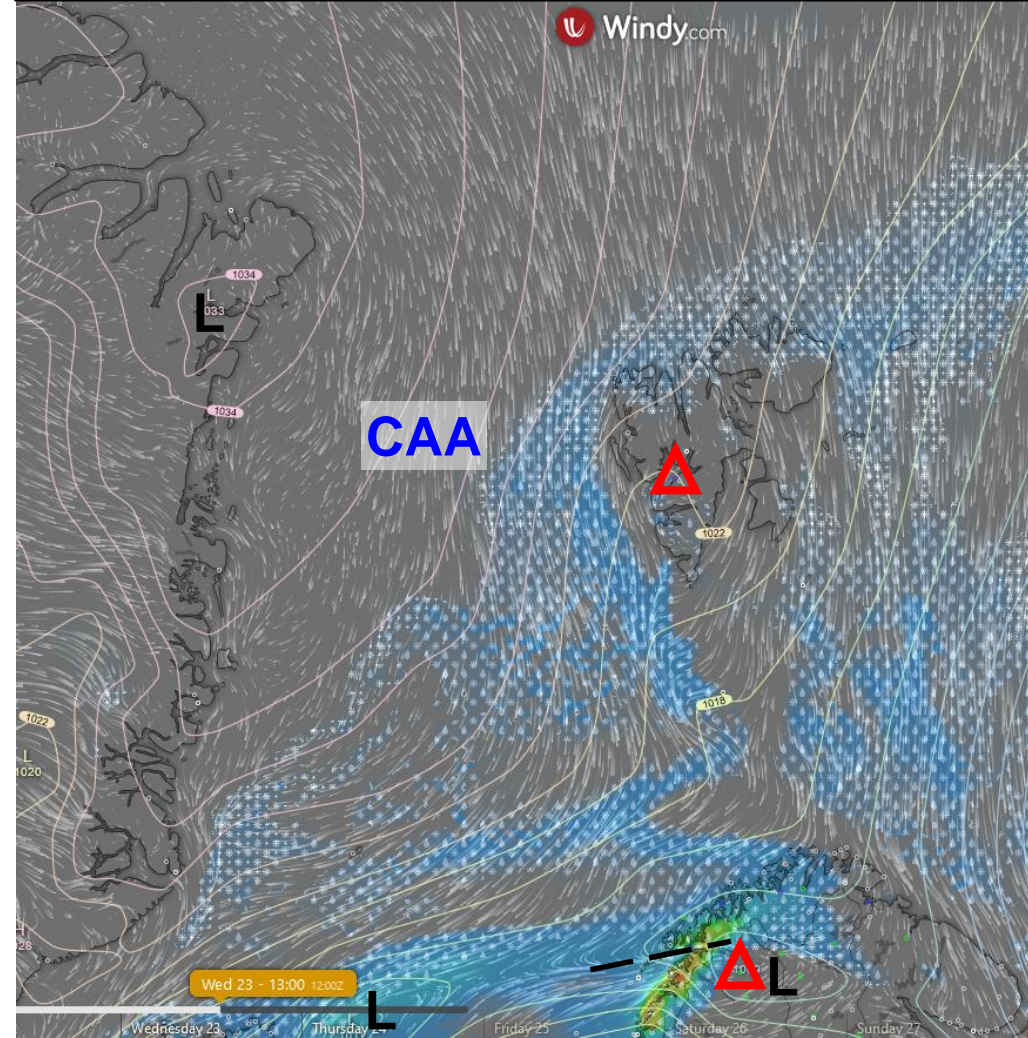


Wednesday, 2022-03-23 12 UTC (+108h)

ECMWF



ICON



Forecast comparison yesterday 00 UTC and 12 UTC

Forecast comparison (TCC, Theta850hPa)

2022-03-19 00 UTC

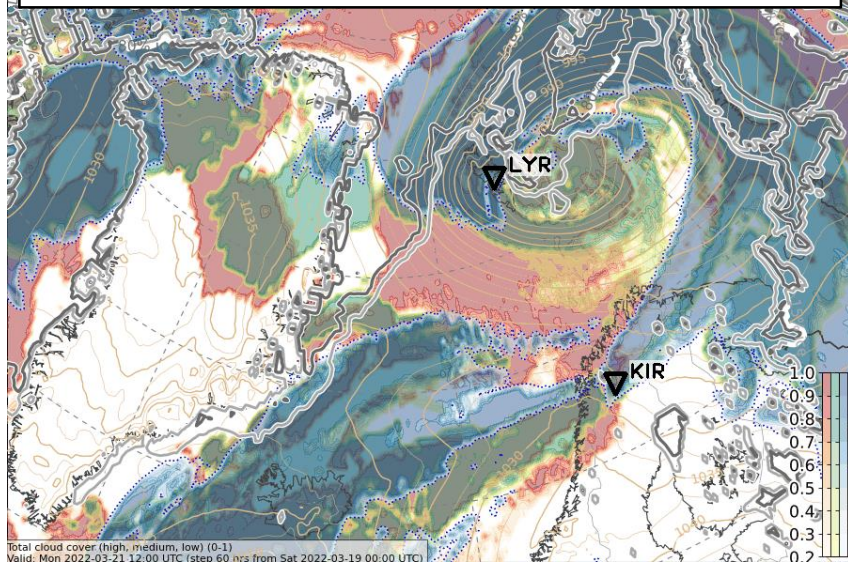
ECMWF

2022-03-19 12 UTC

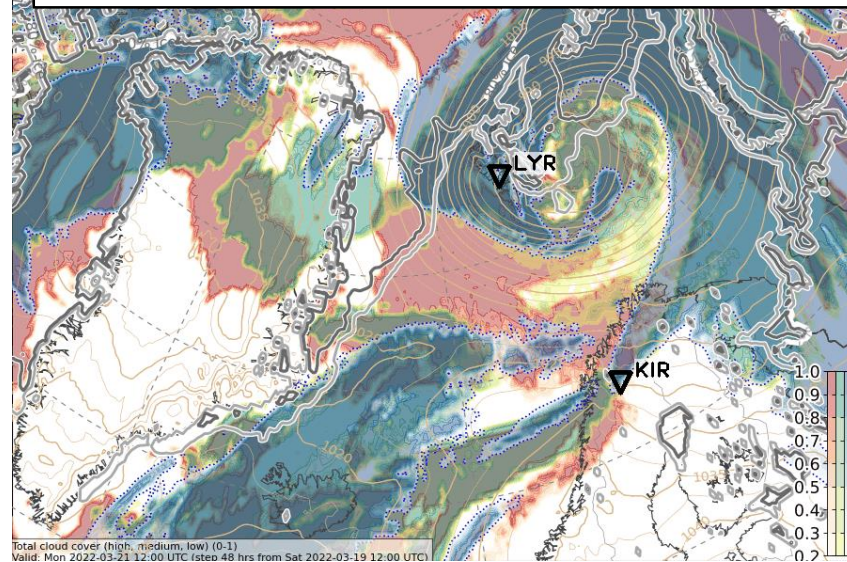
ECMWF

Mon, 2022-03-21 12 UTC (+60h)

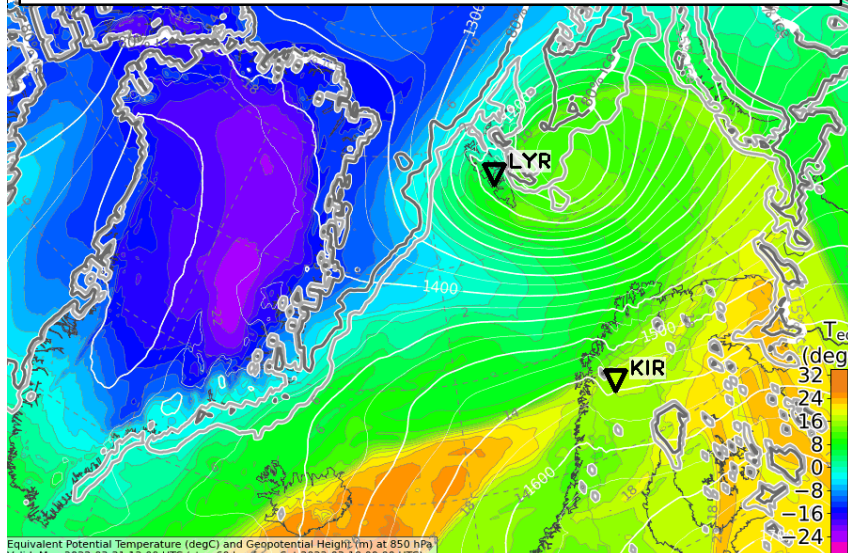
Total cloud cover – 00 UTC Run



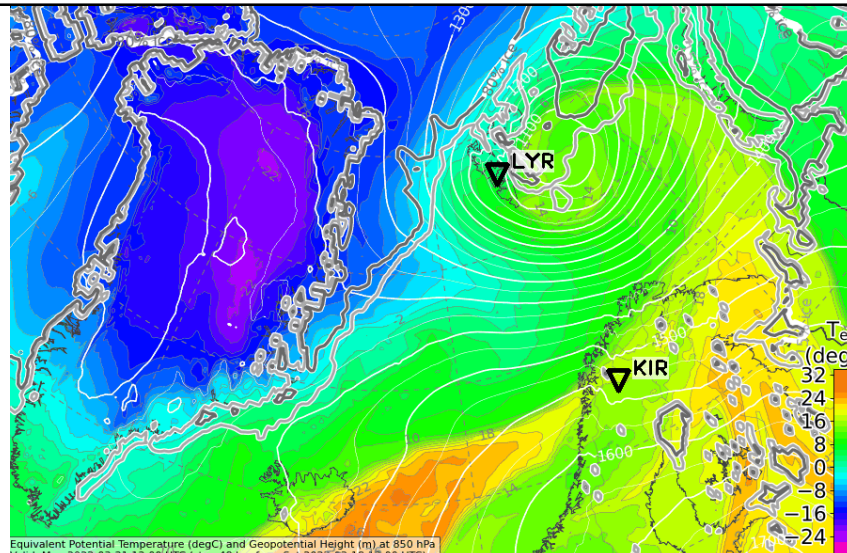
Total cloud cover – 12 UTC Run



850 hPa Equiv. pot. temperature

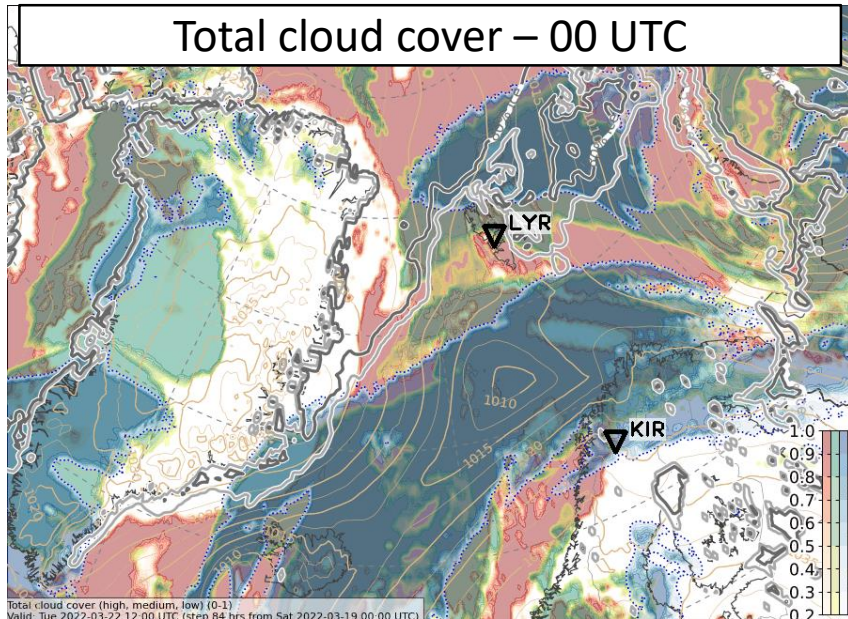


850 hPa Equiv. pot. Temperature – 12 UTC

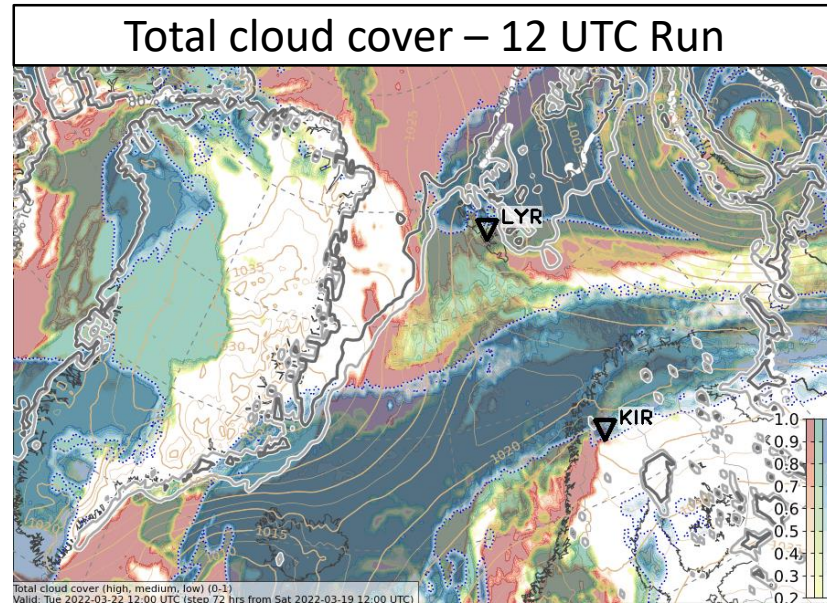


Tue, 2022-03-22 12 UTC (+84h)

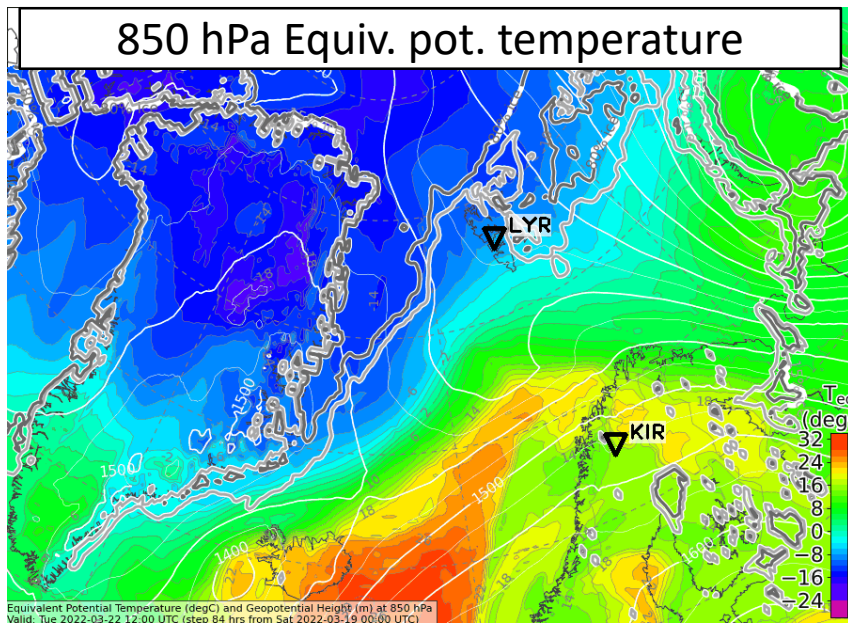
Total cloud cover – 00 UTC



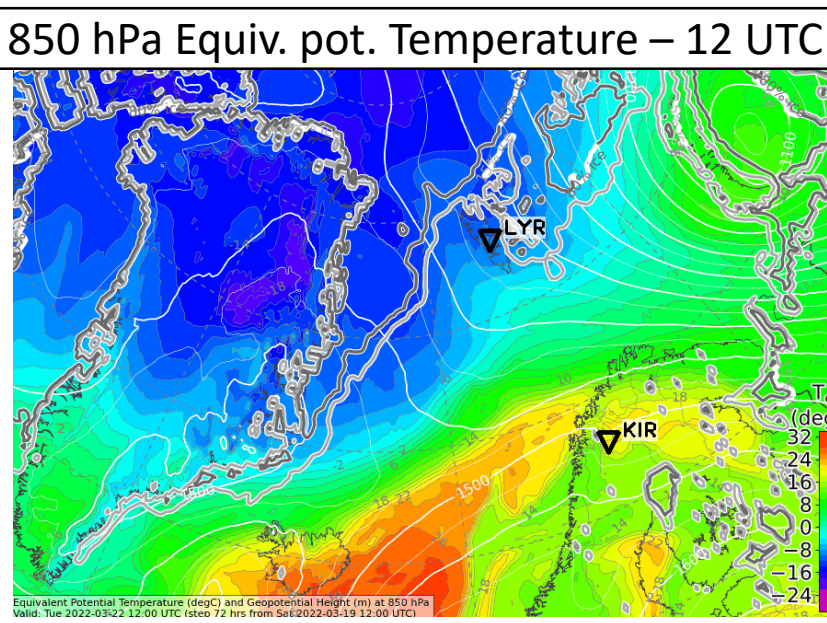
Total cloud cover – 12 UTC Run



850 hPa Equiv. pot. temperature



850 hPa Equiv. pot. Temperature – 12 UTC

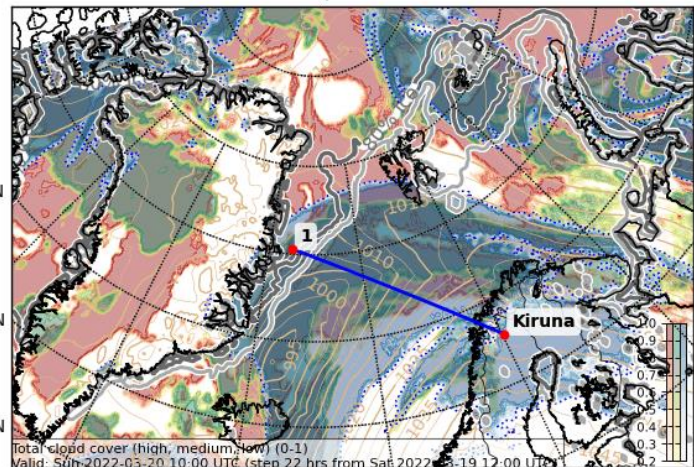


Cloud cross-sections: Fram Strait
2022-03-19 12 UTC: 36 – 60h
ECMWF & ICON

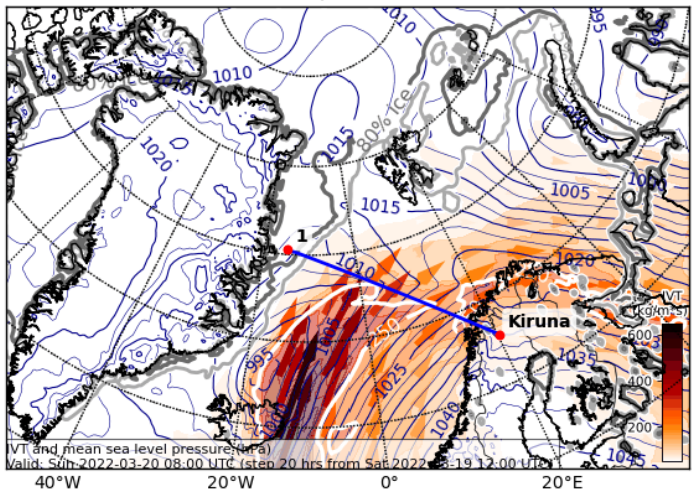
Sun, 2022-03-20, Clouds, 12 UTC

ECMWF

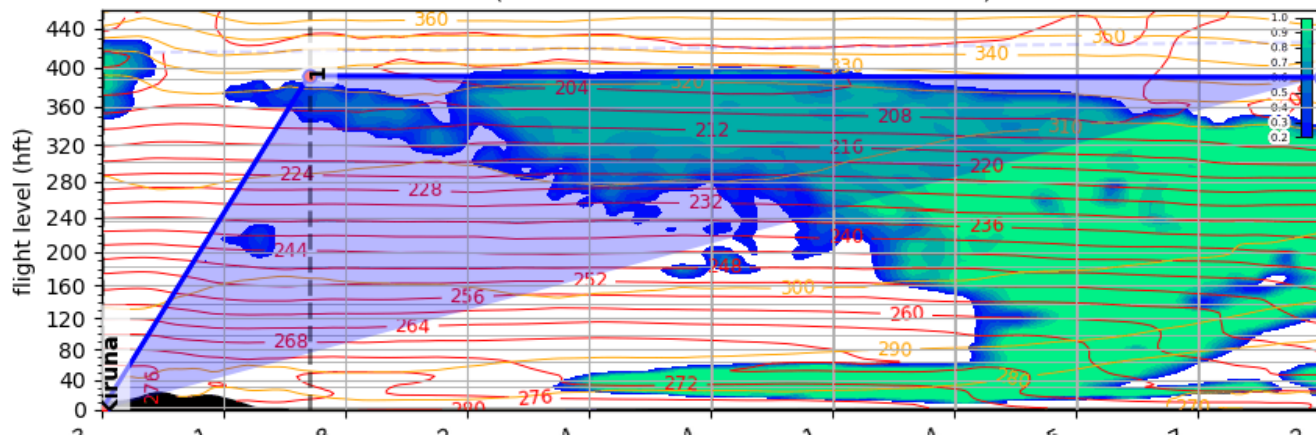
Cloud Cover (0-1) and Mean Sea Level Pressure (hPa) (default)
Valid: 2022-03-20T10:00:00Z (initialisation: 2022-03-19T12:00:00Z)



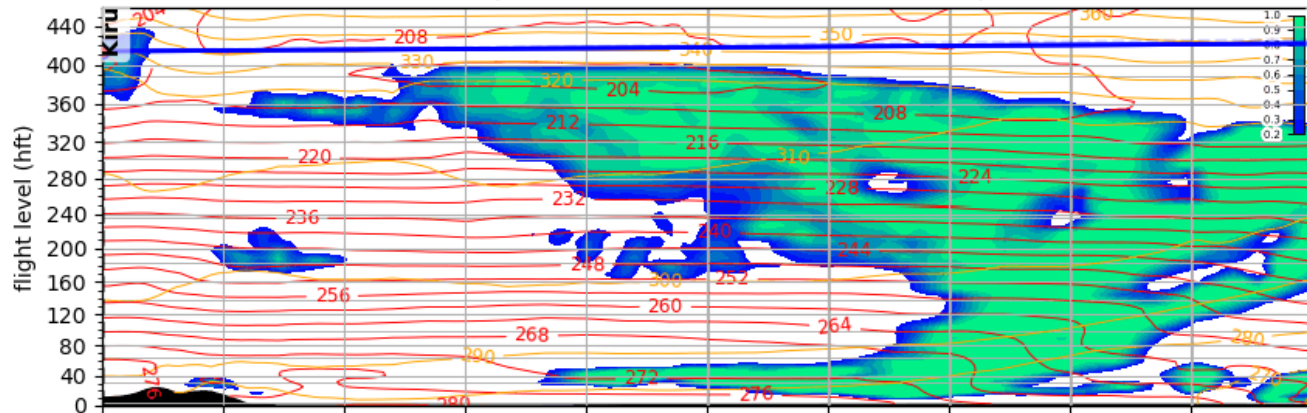
IVT (kg m⁻¹ s⁻¹) and Mean Sea Level Pressure (hPa)
Valid: 2022-03-20T08:00:00Z (initialisation: 2022-03-19T12:00:00Z)



Cloud Cover (0-1) vertical section
Valid: 2022-03-20T10:00:00Z (initialisation: 2022-03-19T00:00:00Z)

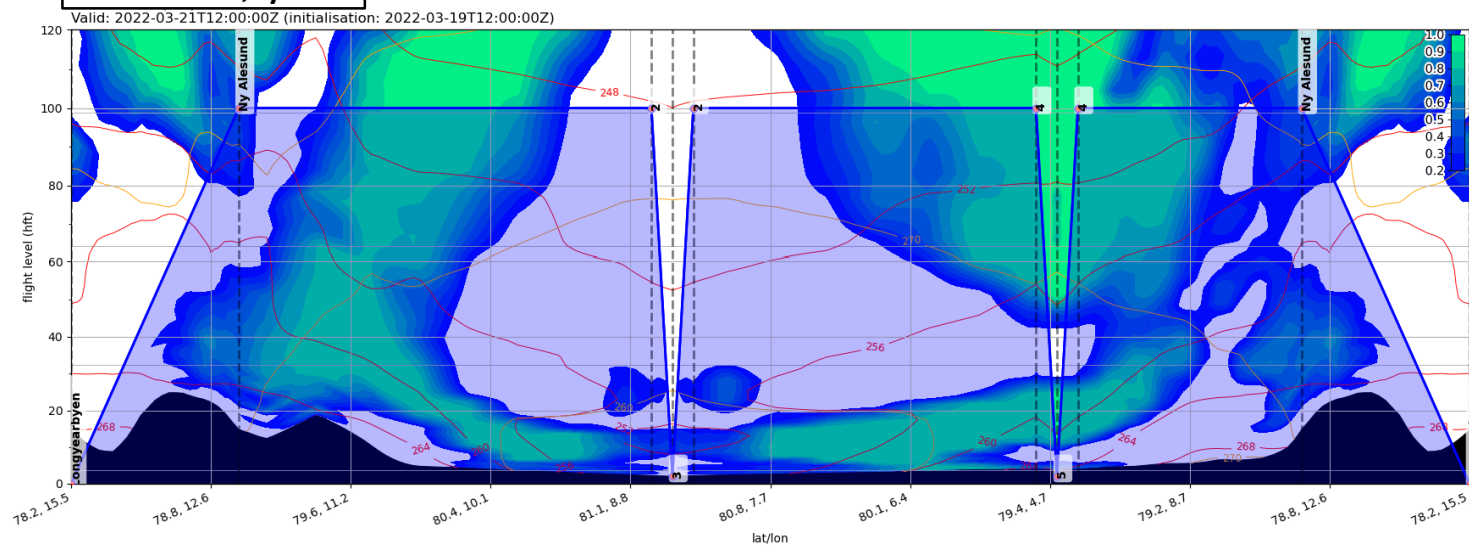


Valid: 2022-03-20T10:00:00Z (initialisation: 2022-03-19T12:00:00Z)

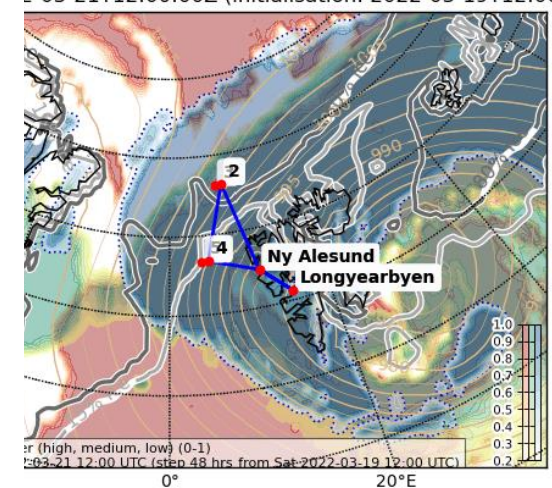


Mon, 2022-03-21, Clouds, 12 UTC – Flight track Polar 5

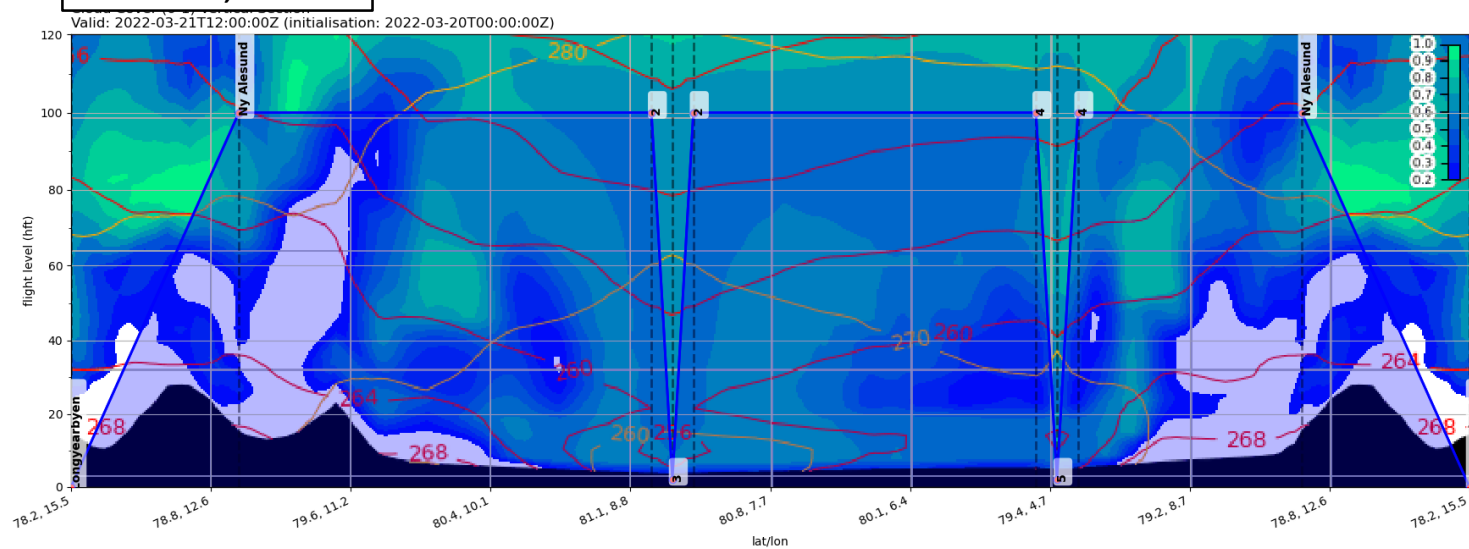
ECMWF, y12



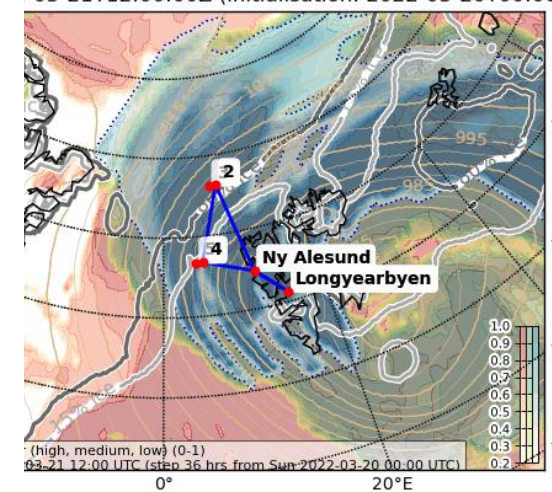
er (0-1) and Mean Sea Level Pressure (hPa) (default
2-03-21T12:00:00Z (initialisation: 2022-03-19T12:00:00Z)



ICON, t00

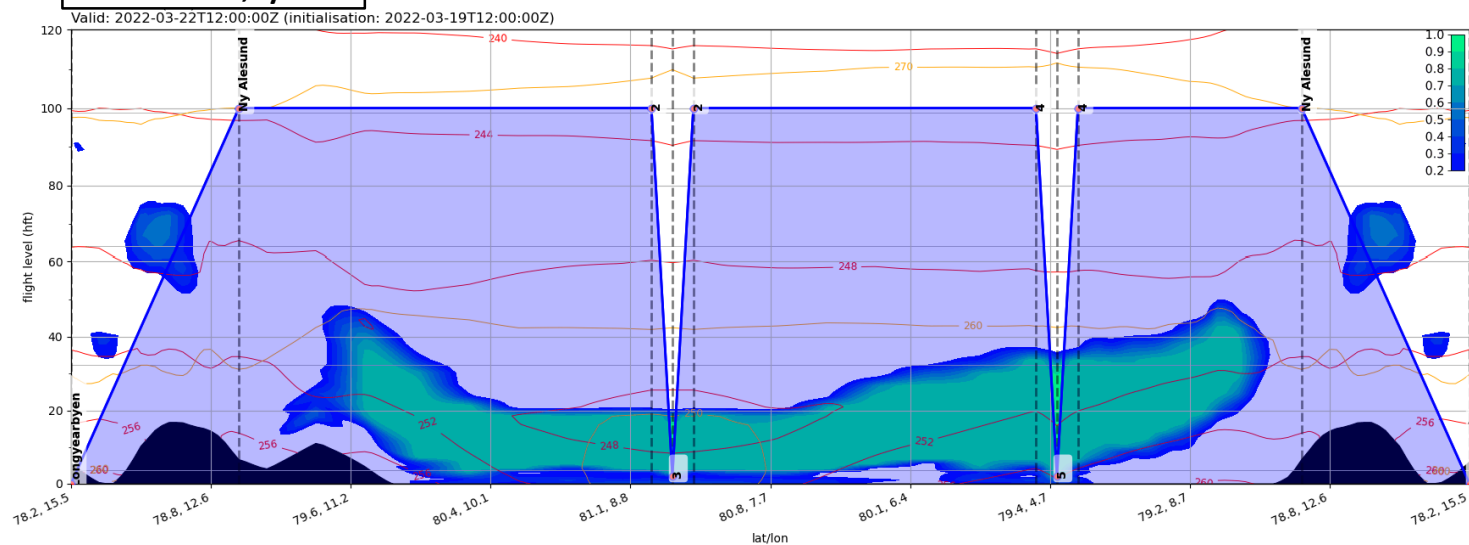


er (0-1) and Mean Sea Level Pressure (hPa) (default
-03-21T12:00:00Z (initialisation: 2022-03-20T00:00:00Z)

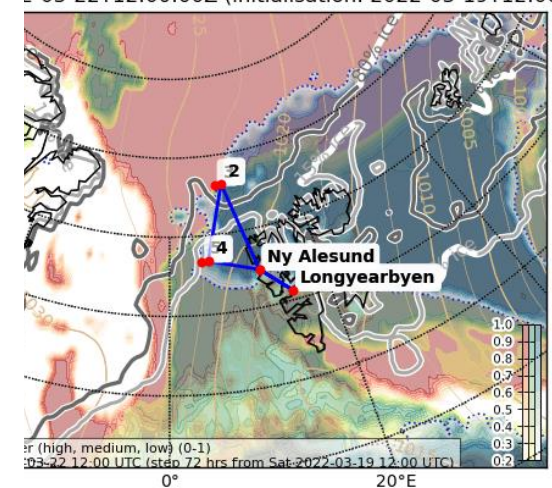


Tue, 2022-03-22, Clouds, 12 UTC – Flight track Polar 5

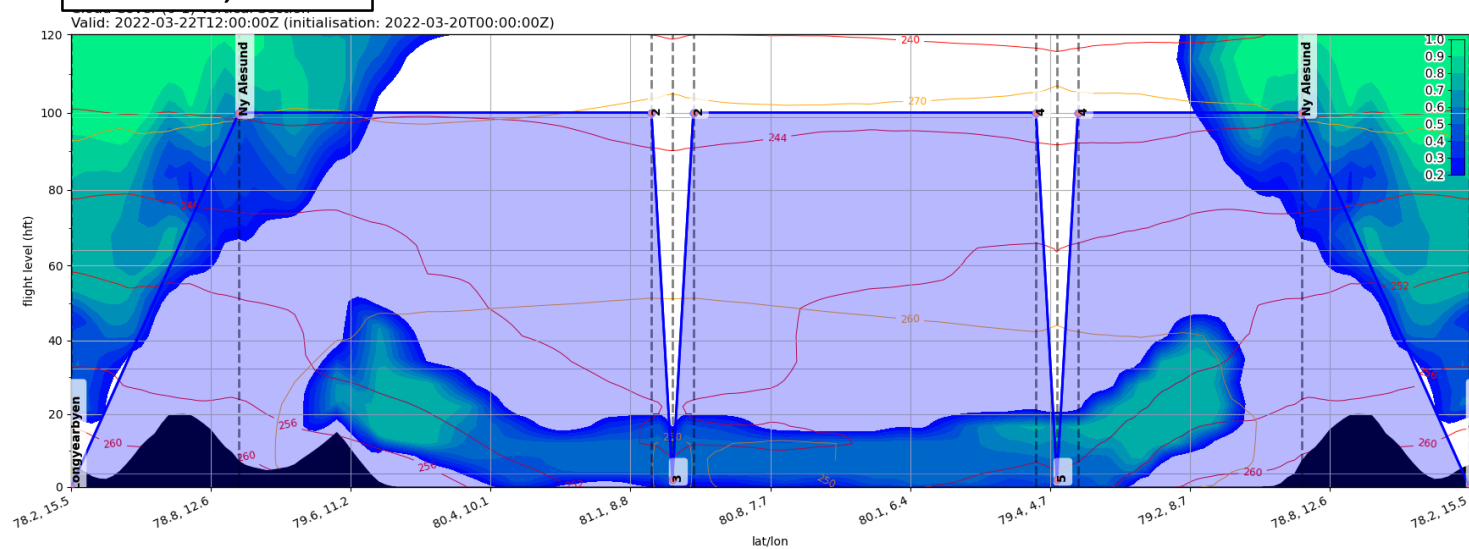
ECMWF, y12



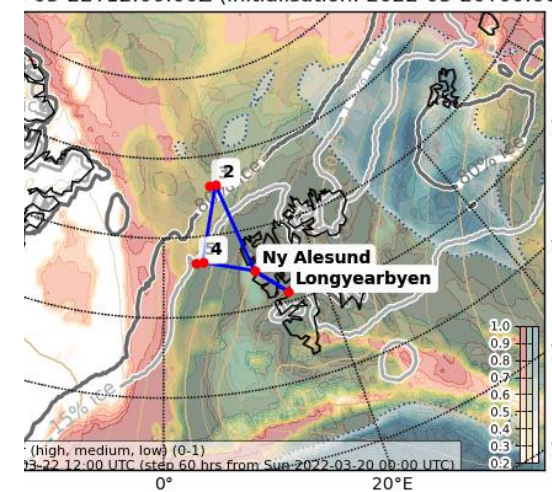
er (0-1) and Mean Sea Level Pressure (hPa) (default
2-03-22T12:00:00Z (initialisation: 2022-03-19T12:00:00Z)



ICON, t00

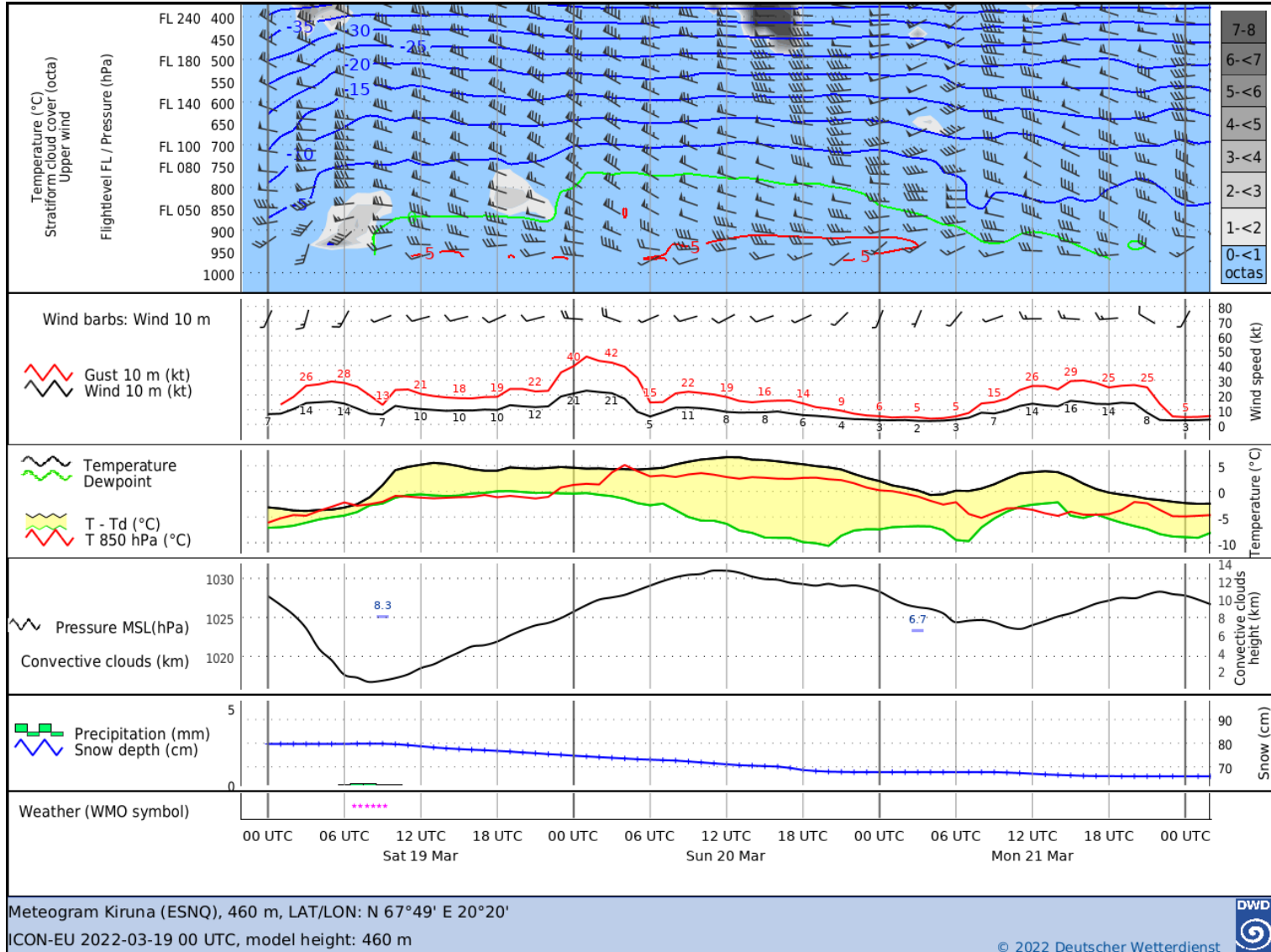


er (0-1) and Mean Sea Level Pressure (hPa) (default
-03-22T12:00:00Z (initialisation: 2022-03-20T00:00:00Z)



Airport meteograms & local weather at Svalbard

Kiruna:



Summary

Summary: Weather Briefing 2022-03-17, 17:00 LT

- **Monday, 2022-03-21:**
 - No significant forecast changes:
 - SK cyclone reaching Svalbard and starts dissipating
 - Unfavourable flight conditions around LYR (wind, precip.)
 - High-reaching clouds in Fram Strait close to Svalbard, low level clouds south of cyclone
- **Tuesday, 2022-03-22:**
 - CAO developing in Fram Strait perpendicular to sea ice edge. CAA stronger in 12 UTC run.
- **Wednesday, 2022-03-23:**
 - CAA reaching further to open ocean, probably blocked by WAA in North Atlantic.
 - Details in intensity still unsure.