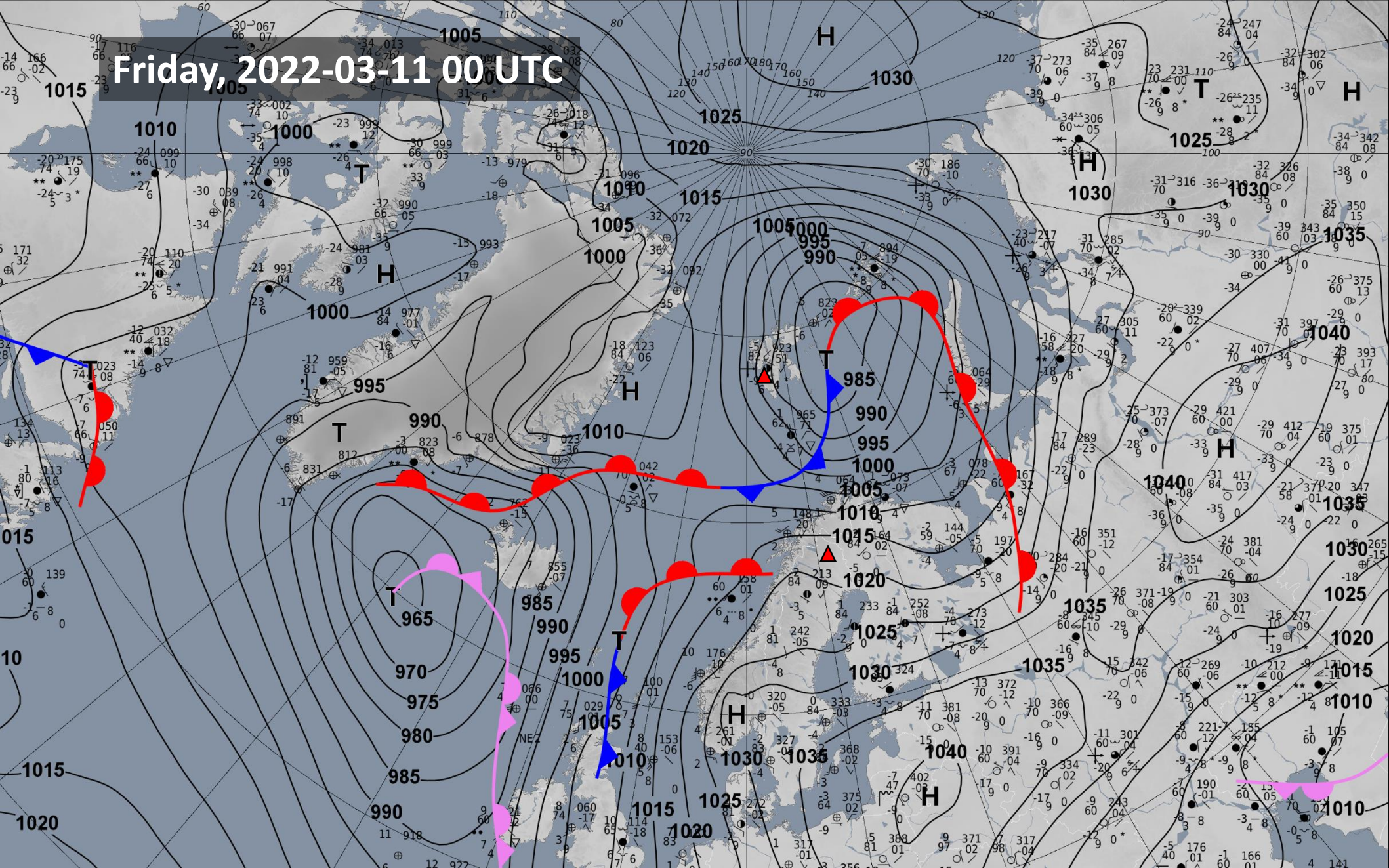


Weather briefing HALO-(AC)³

Friday, 2022-03-11 17:00

Surface Analysis
2022-03-11 00 UTC
DWD

Friday, 2022-03-11 00 UTC



Circulation pattern development

2022-03-11 00 UTC: 00 – 72h

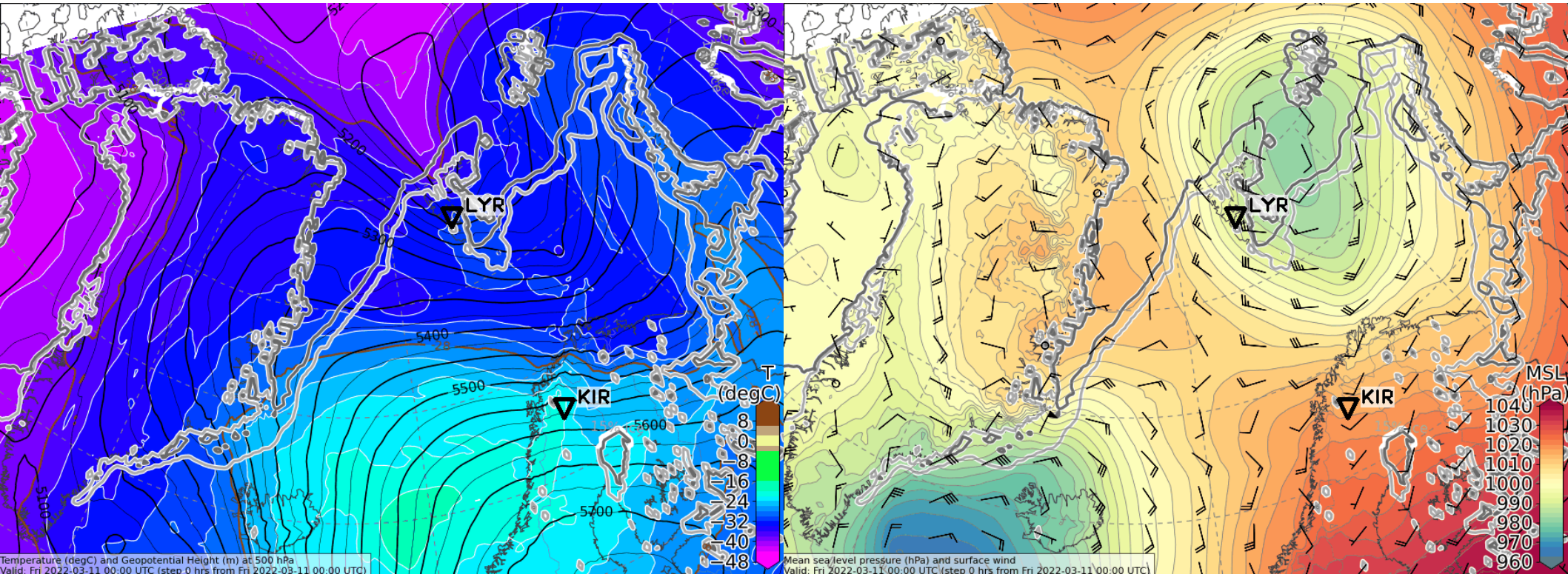
500 hPa Geopot & T

Sea level pressure

Friday, 2022-03-11 00 UTC (+00h)

500 hPa Geopot & T

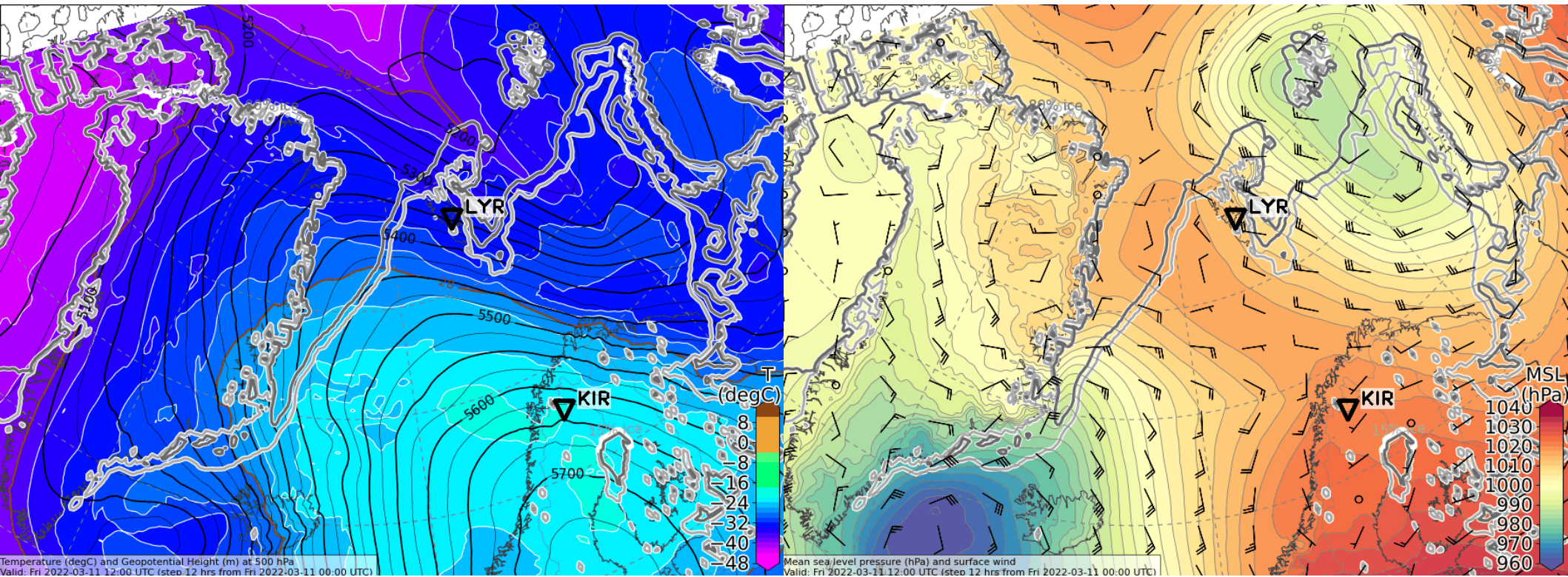
Sea level pressure



Friday, 2022-03-11 12 UTC (+12h)

500 hPa Geopot & T

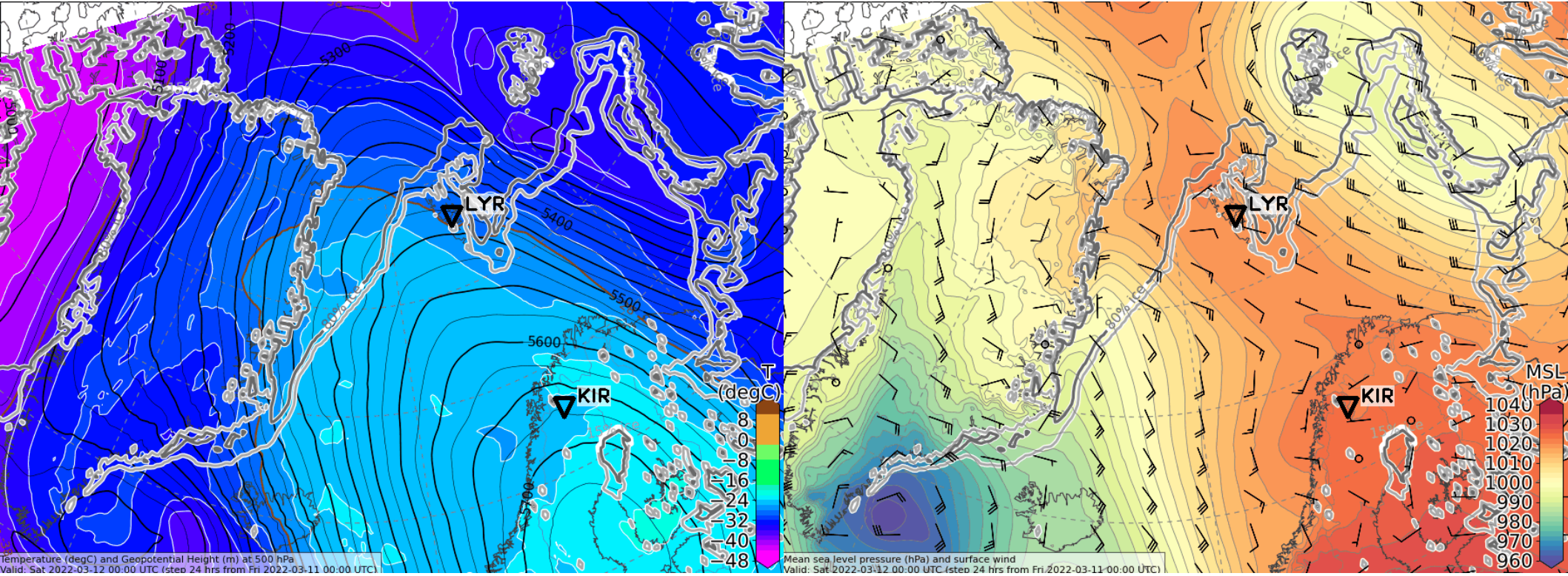
Sea level pressure



Saturday, 2022-03-12 00 UTC (+24h)

500 hPa Geopot & T

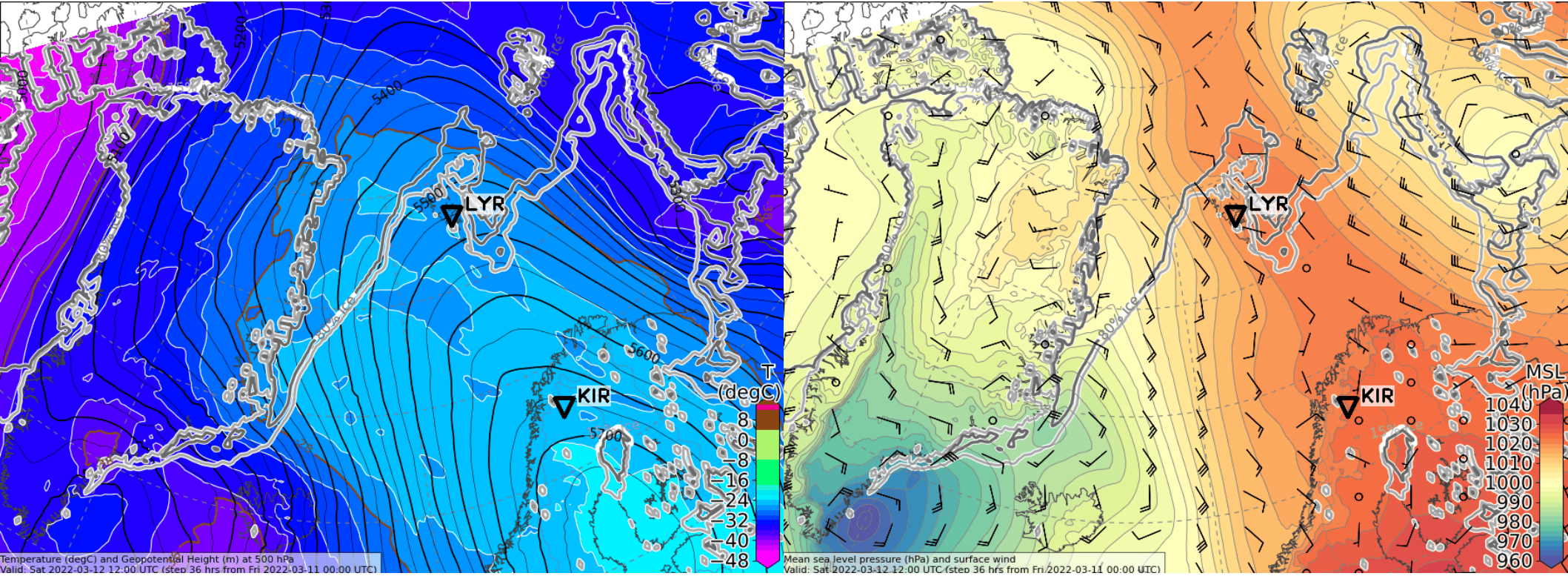
Sea level pressure



Saturday, 2022-03-03 12 UTC (+36h)

500 hPa Geopot & T

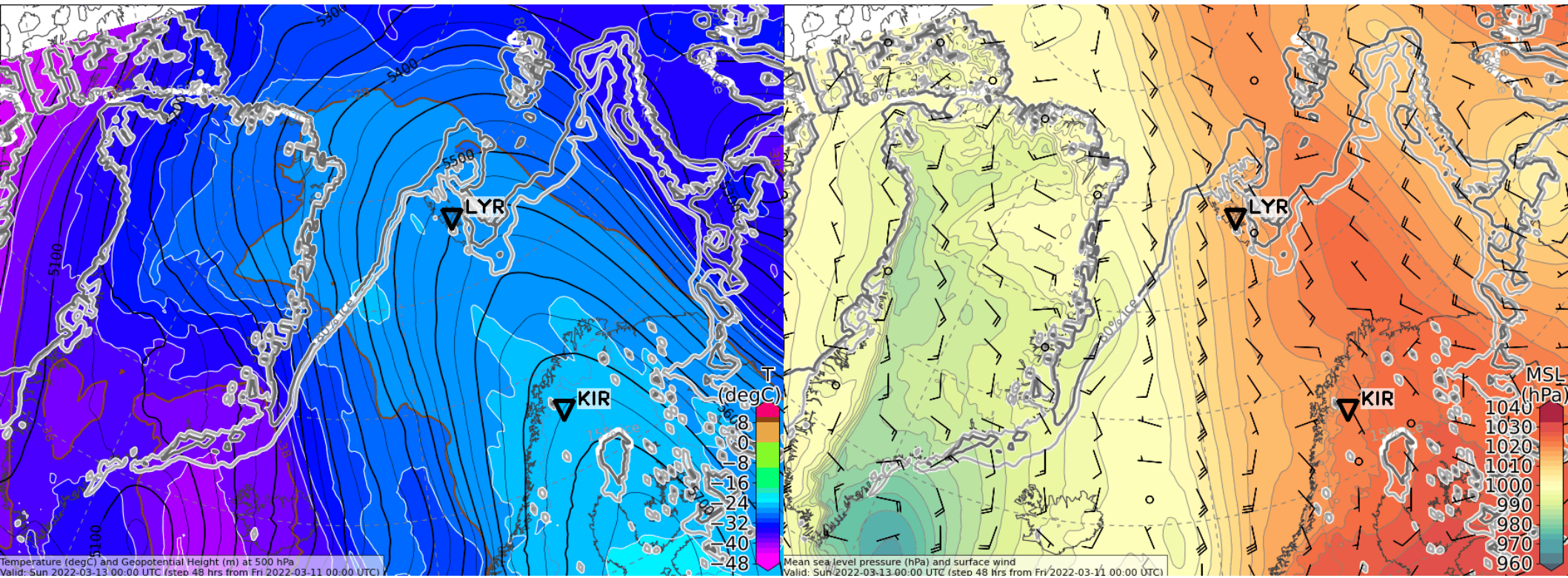
Sea level pressure



Sunday, 2022-03-13 00 UTC (+48h)

500 hPa Geopot & T

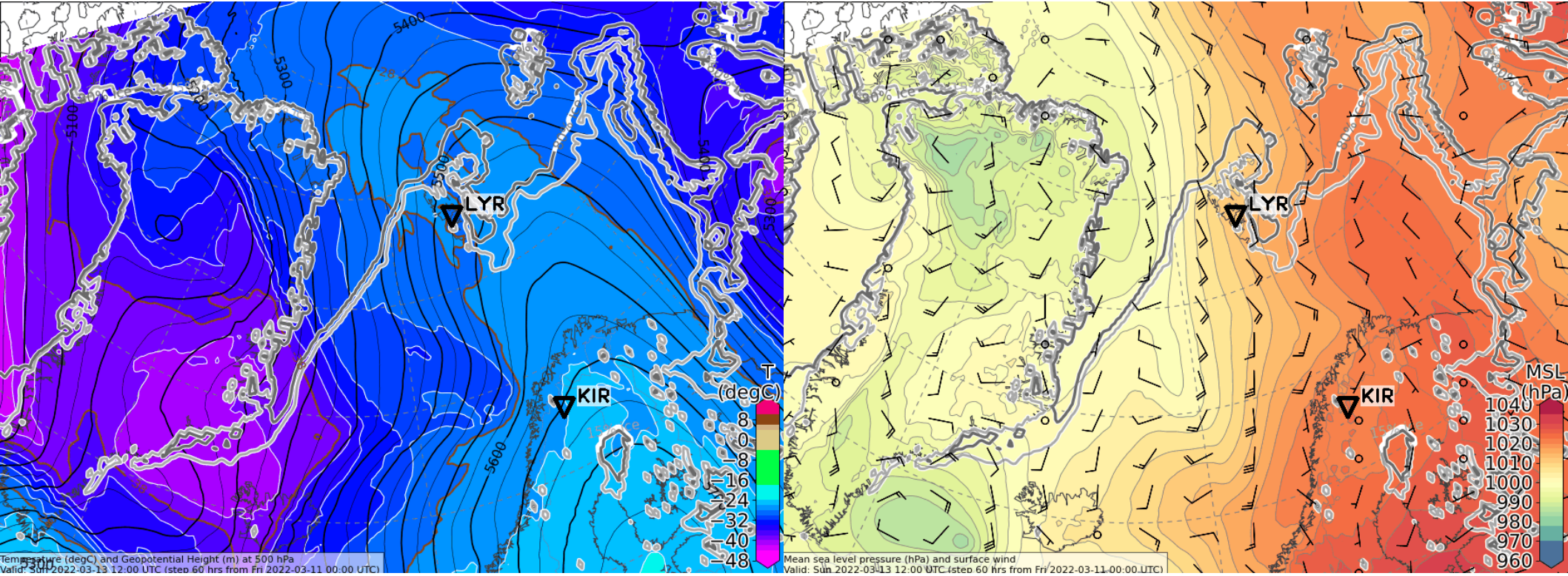
Sea level pressure



Sunday, 2022-03-13 12 UTC (+60h)

500 hPa Geopot & T

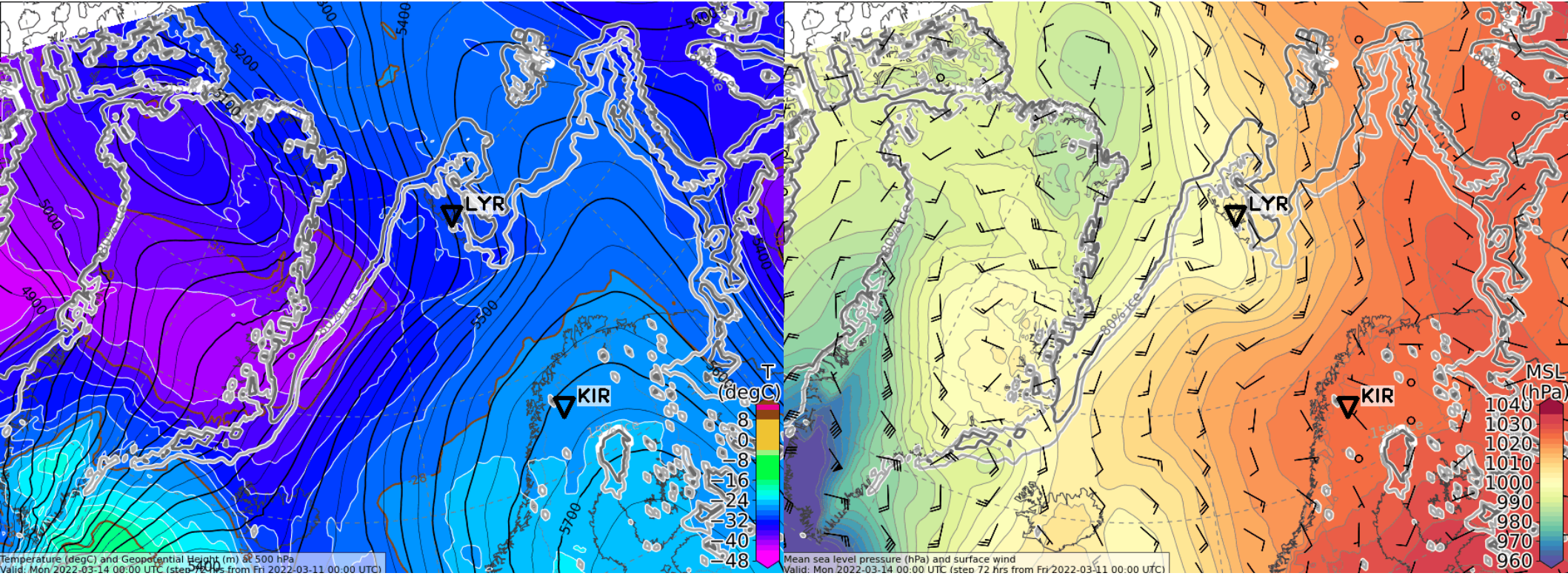
Sea level pressure



Monday, 2022-03-14 00 UTC (+72h)

500 hPa Geopot & T

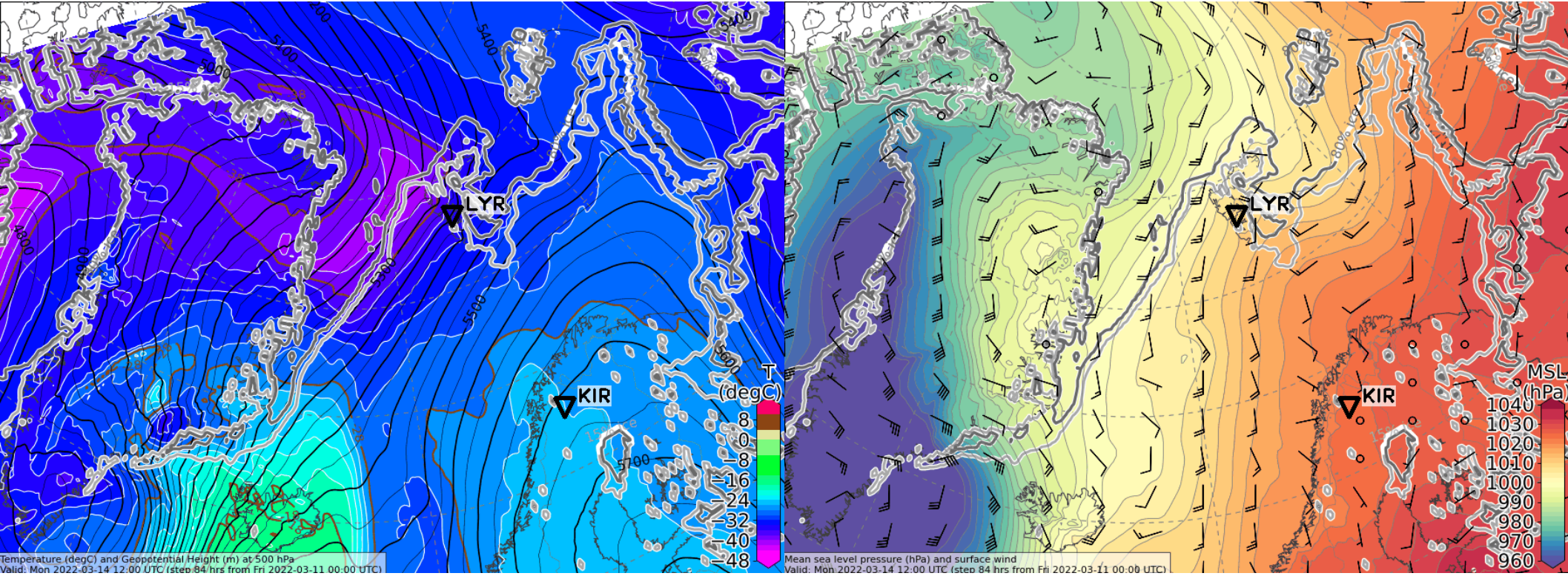
Sea level pressure



Monday, 2022-03-14 12 UTC (+84h)

500 hPa Geopot & T

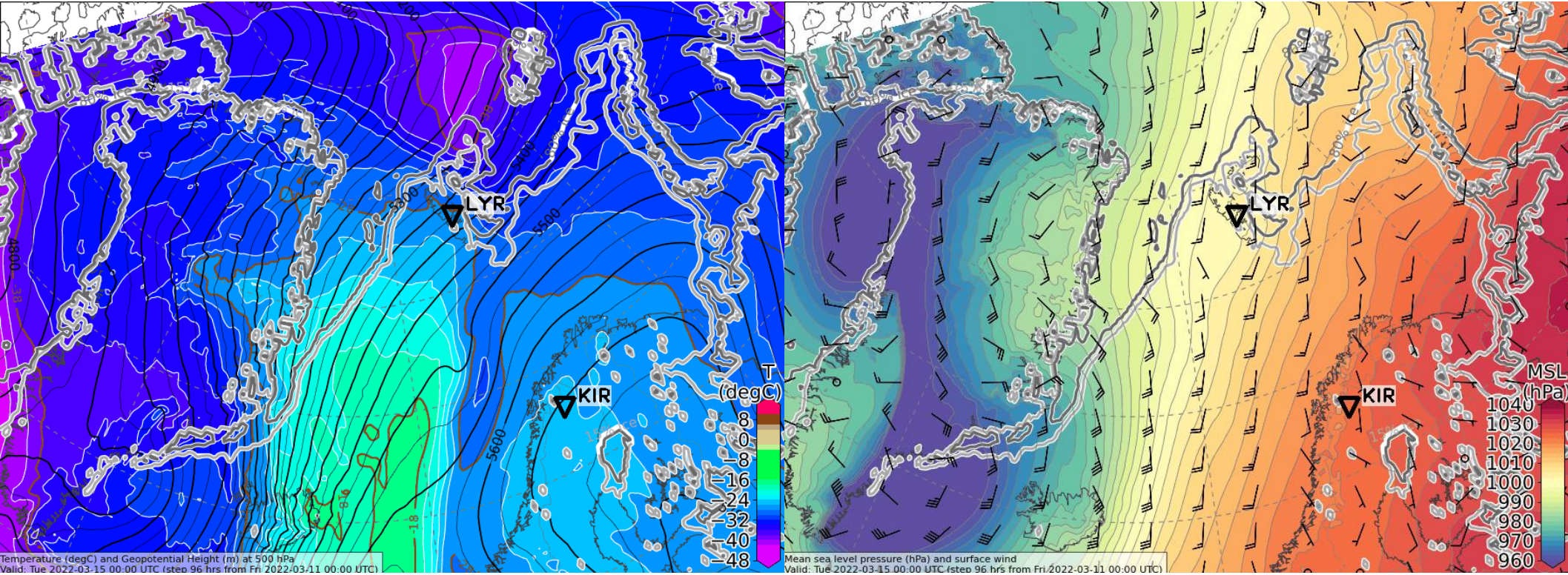
Sea level pressure



Tuesday, 2022-03-15 00 UTC (+96h)

500 hPa Geopot & T

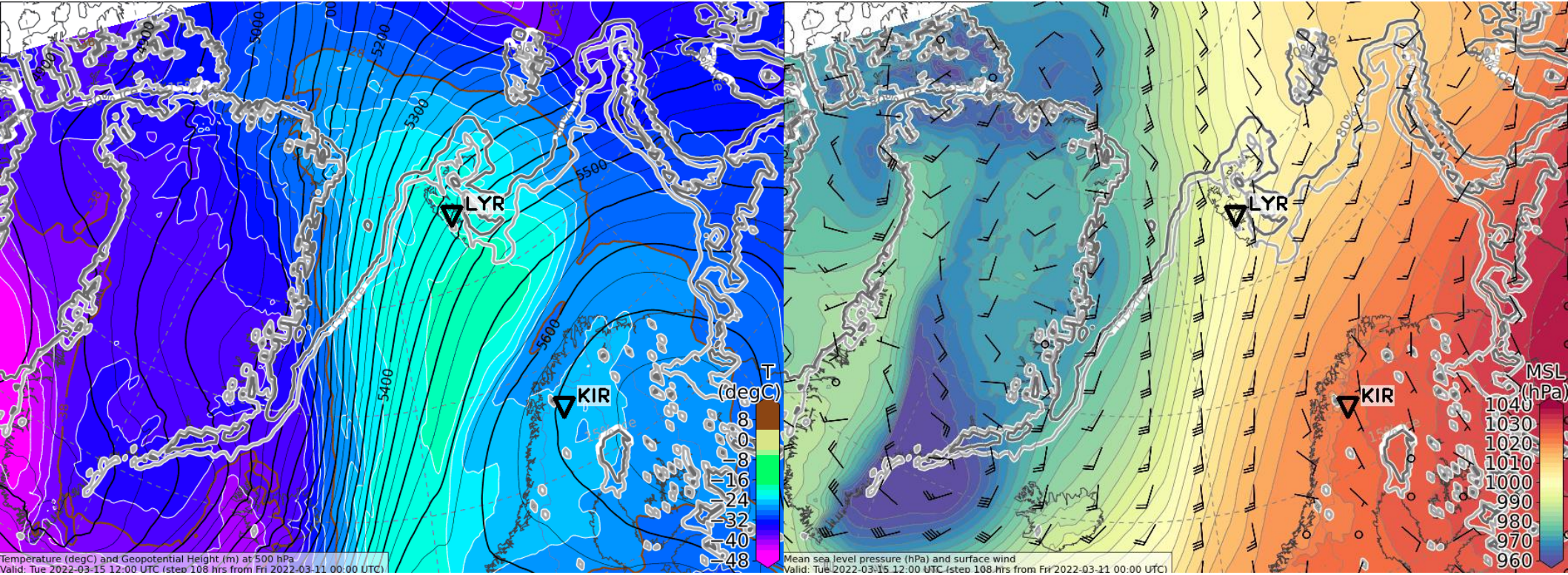
Sea level pressure



Tuesday, 2022-03-15 12 UTC (+108h)

500 hPa Geopot & T

Sea level pressure



Surface wind development
2022-03-11 00 UTC: 36 – 108h
ECMWF

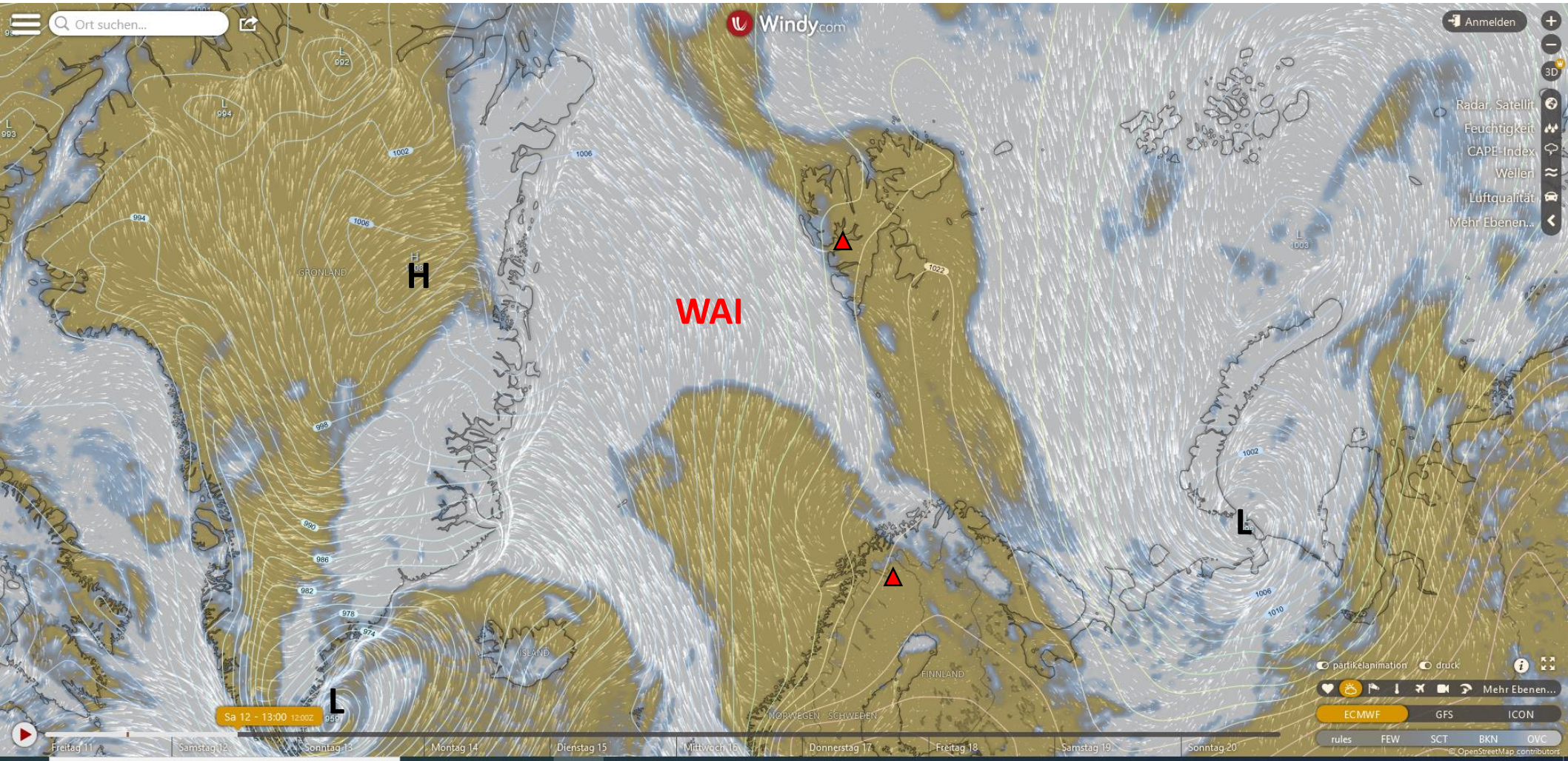
L: Low

H: High

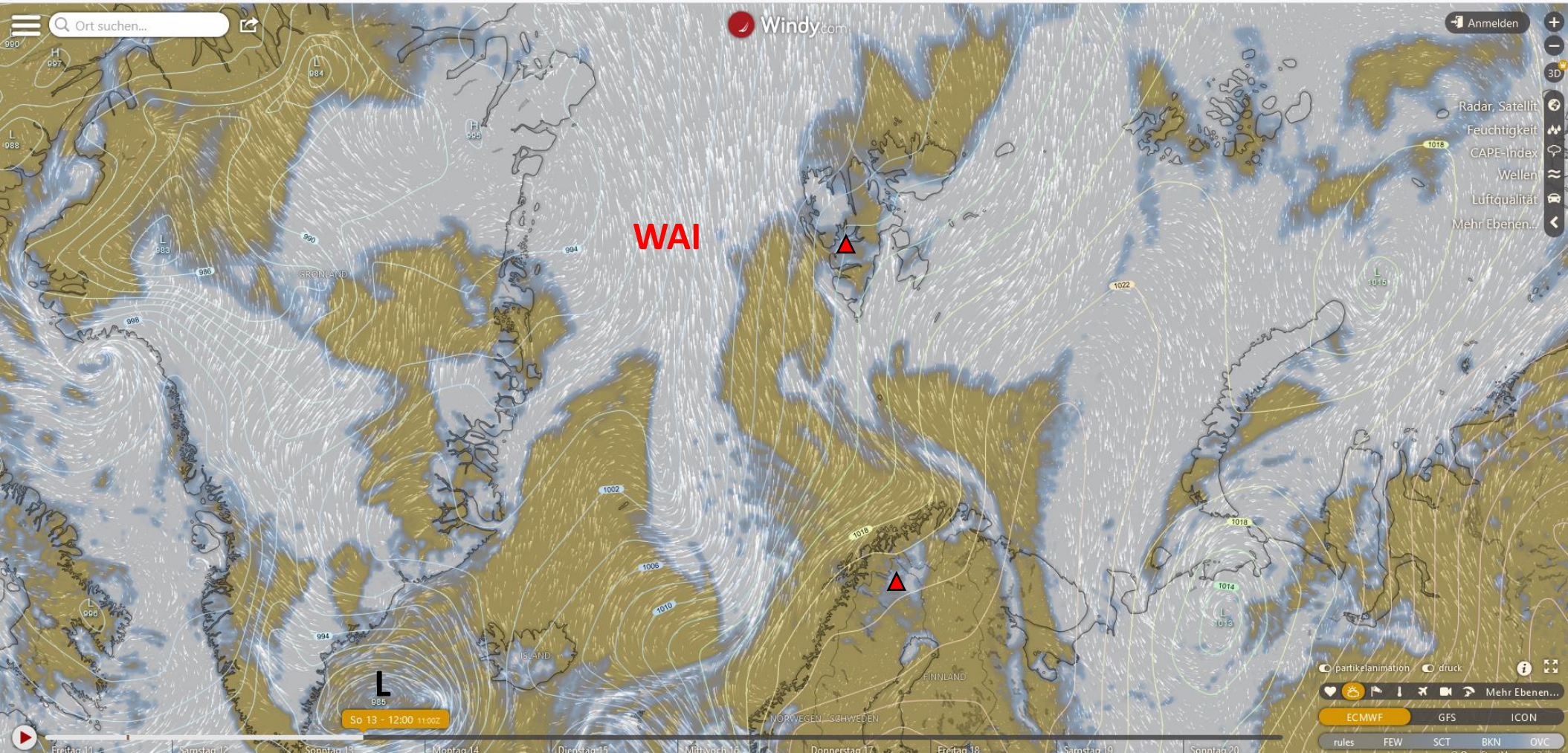
CAA: Cold Air Advection

WAA: Warm Air Advection

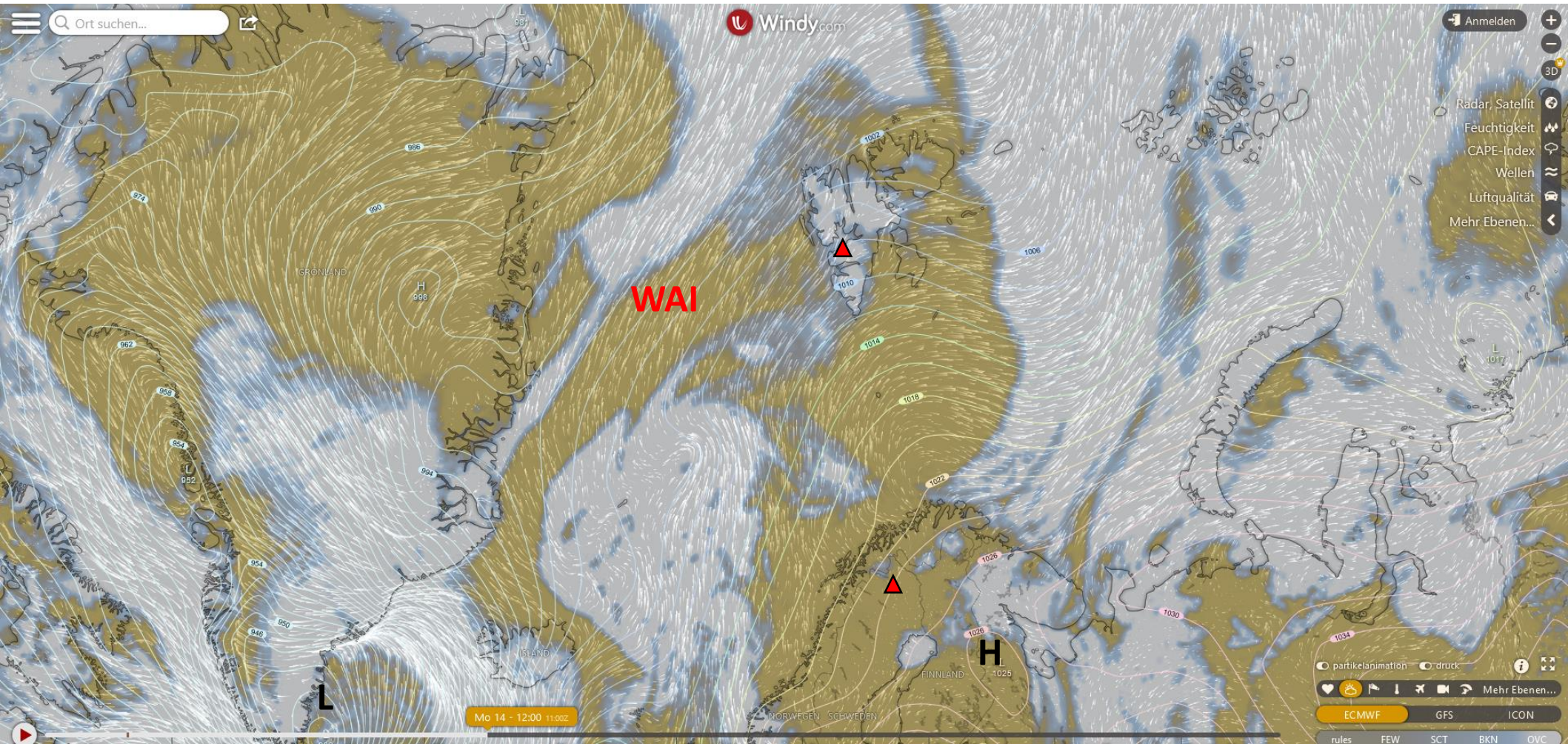
Saturday, 2022-03-12 12 UTC (+36h)



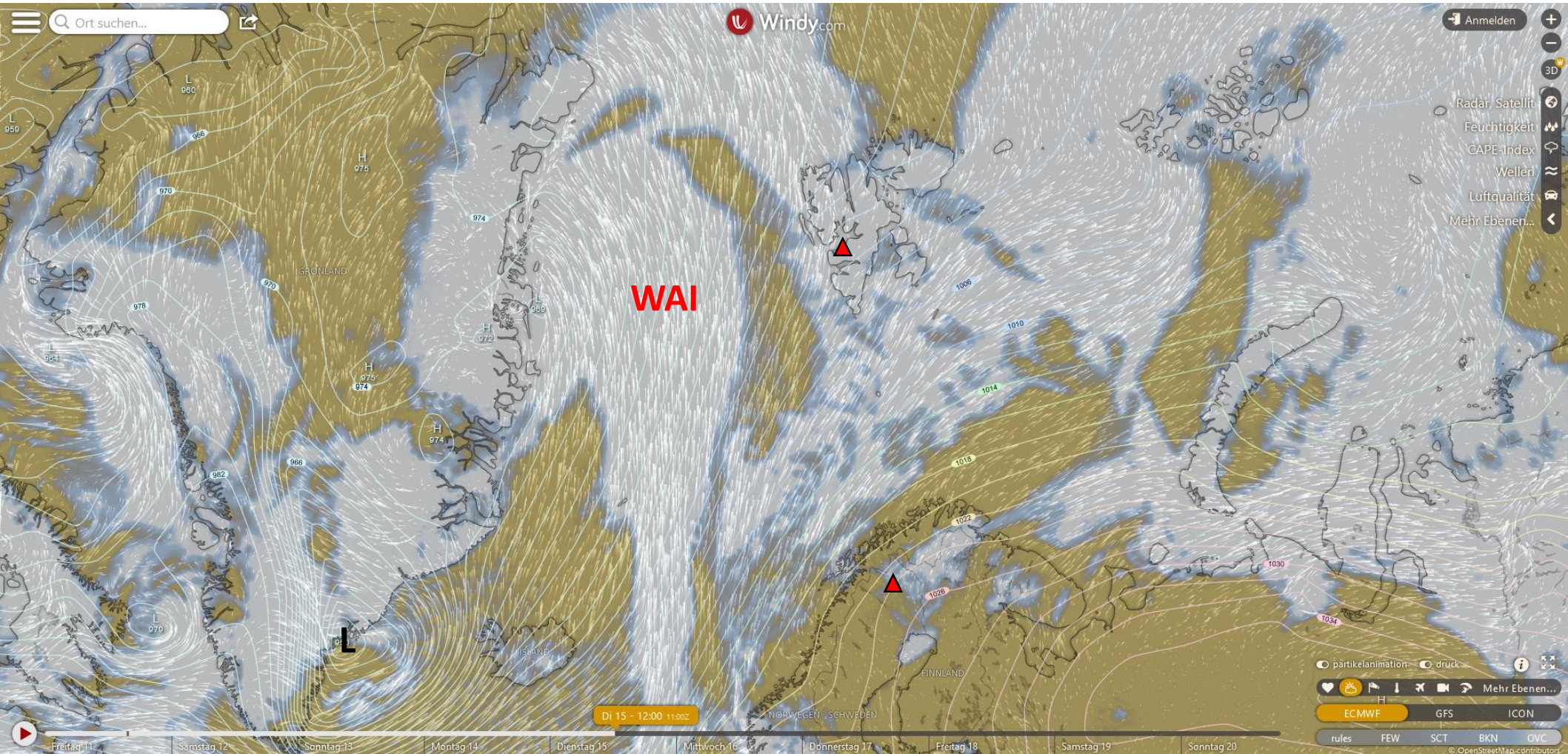
Sunday, 2022-03-13 12 UTC (+60h)



Monday, 2022-03-14 12 UTC (+84h)

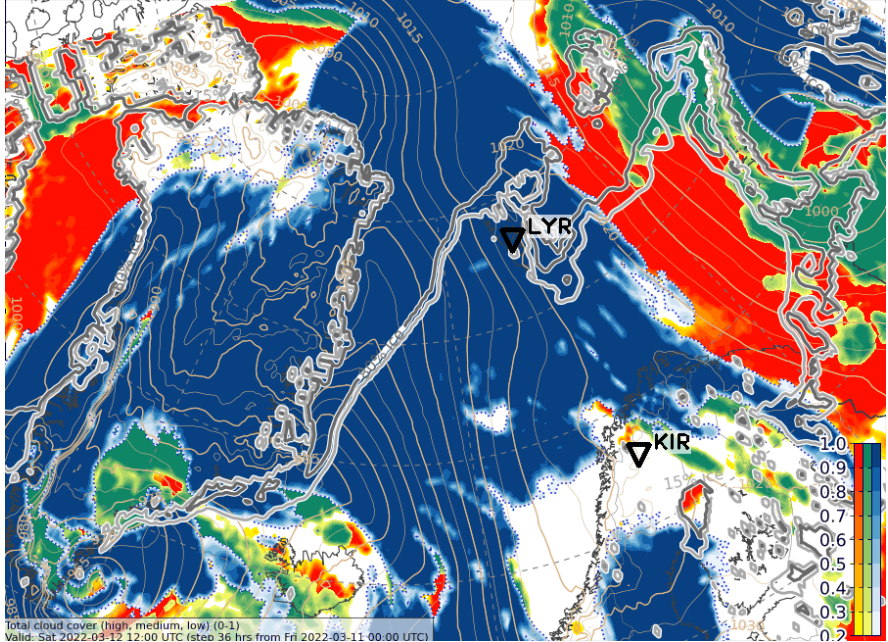
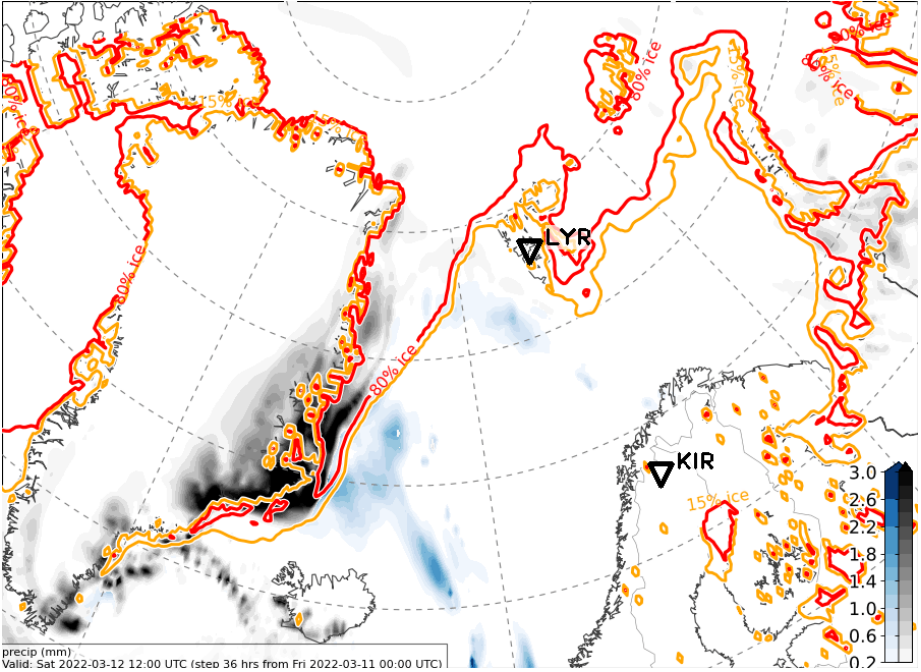


Tuesday, 2022-03-15 12 UTC (+108h)

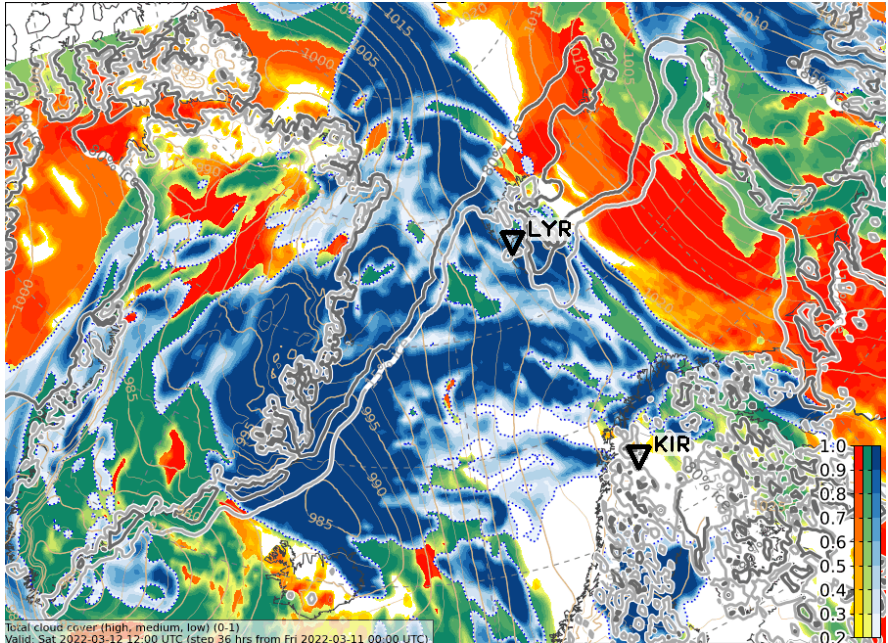


Cloud cover & precip development
2022-03-02 00 UTC: 36 – 108h
ECMWF + ICON

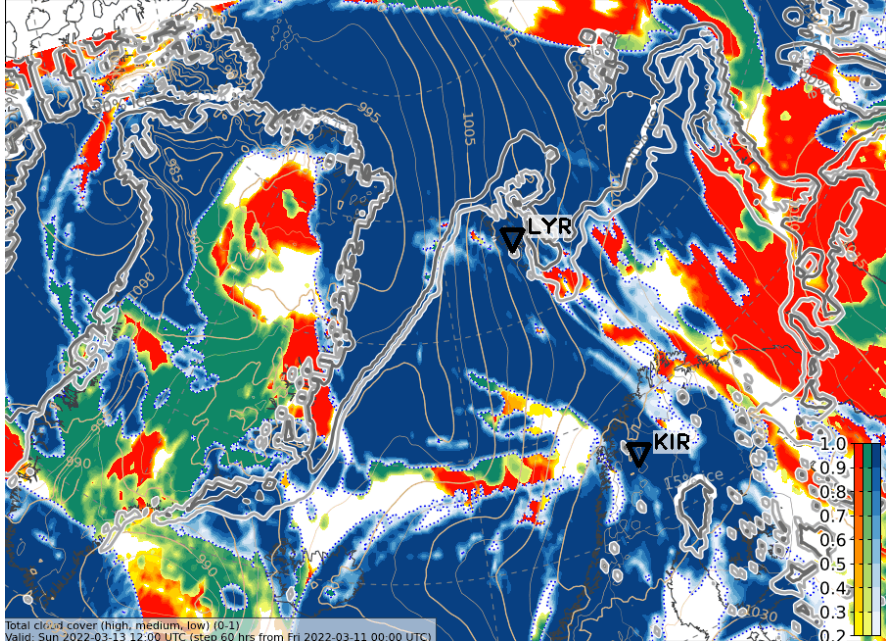
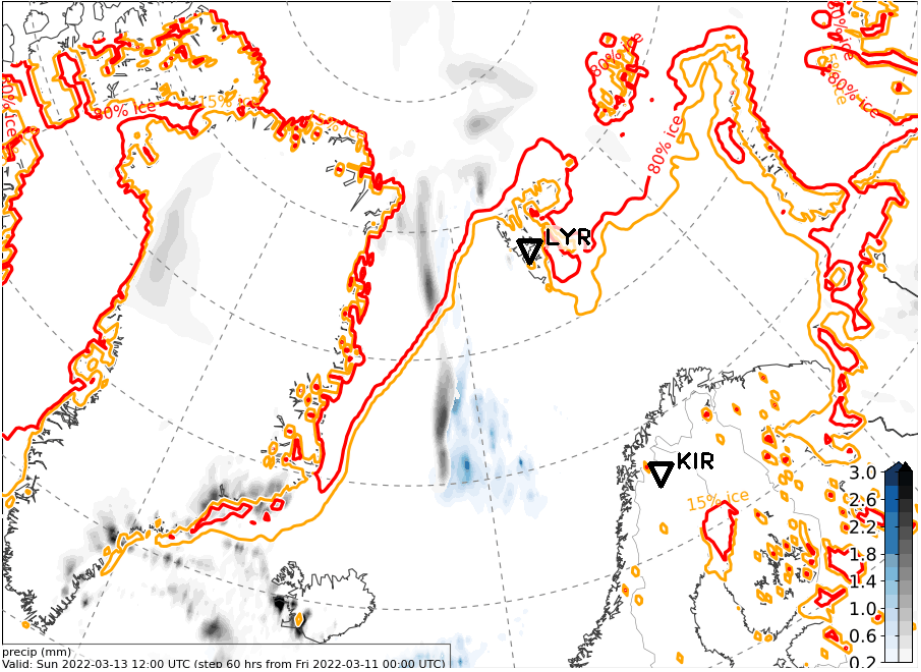
Sat, 2022-03-12 12 UTC (+36h) ECMWF



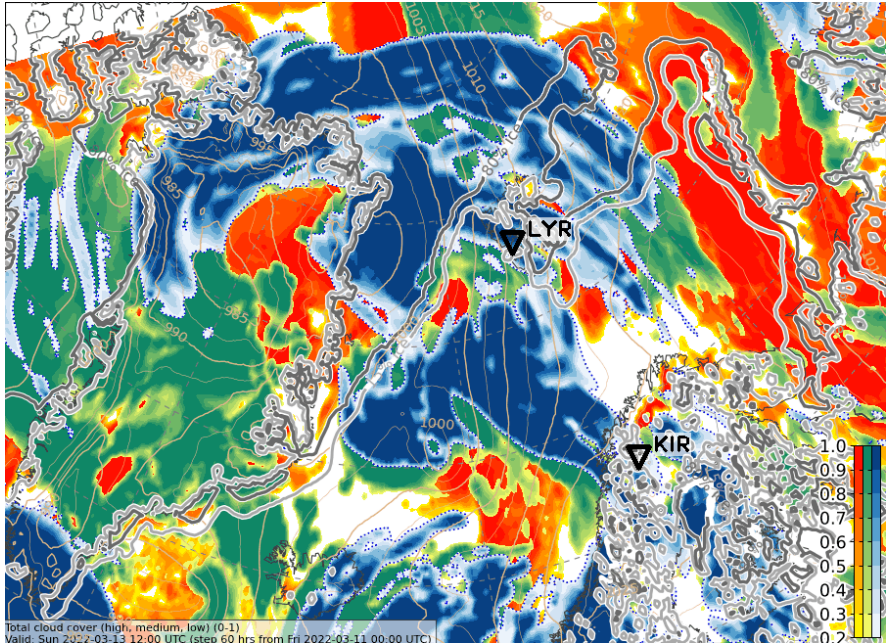
ICON



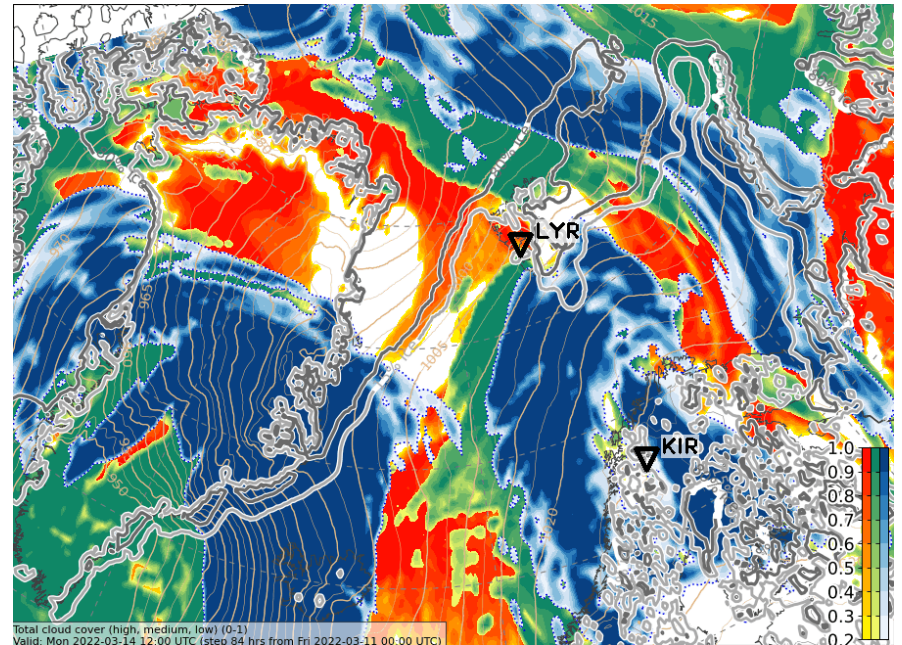
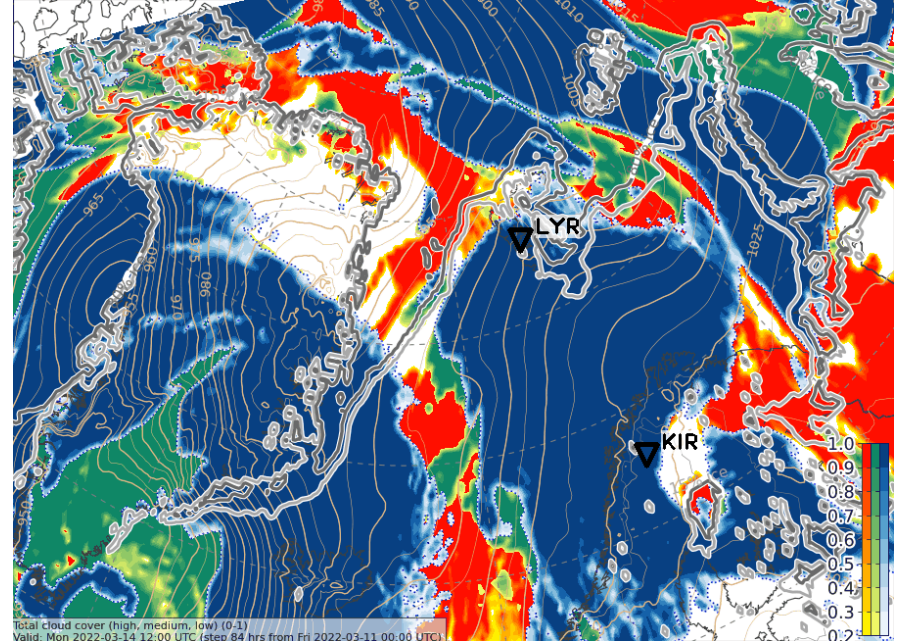
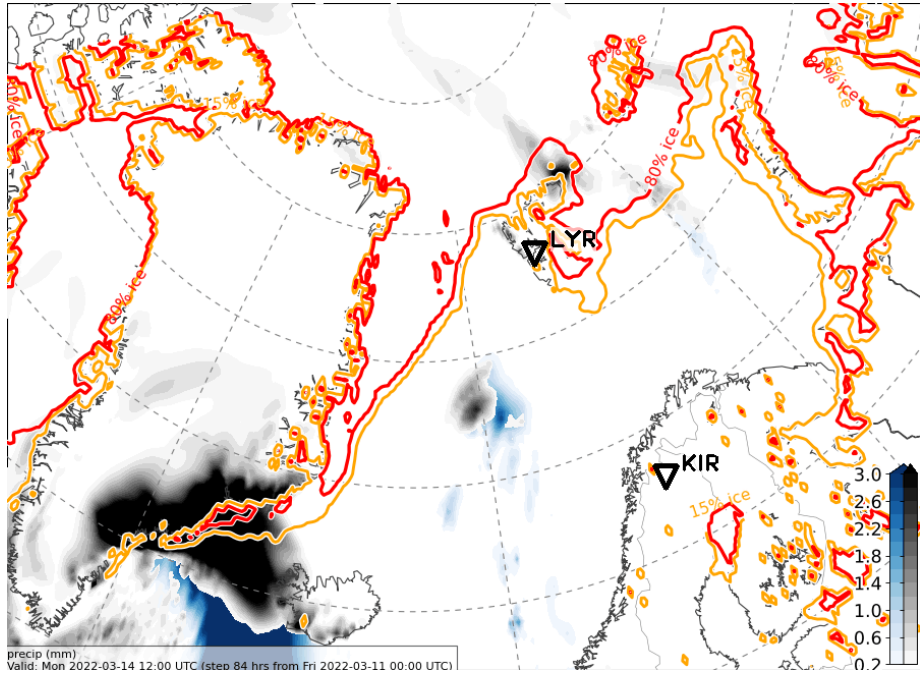
Sun, 2022-03-13 12 UTC (+60h) ECMWF



ICON

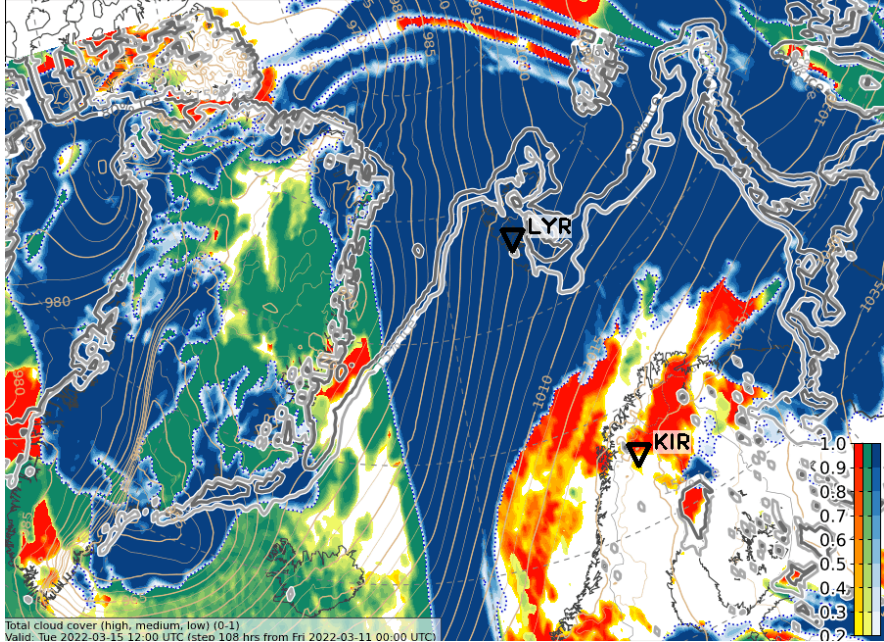
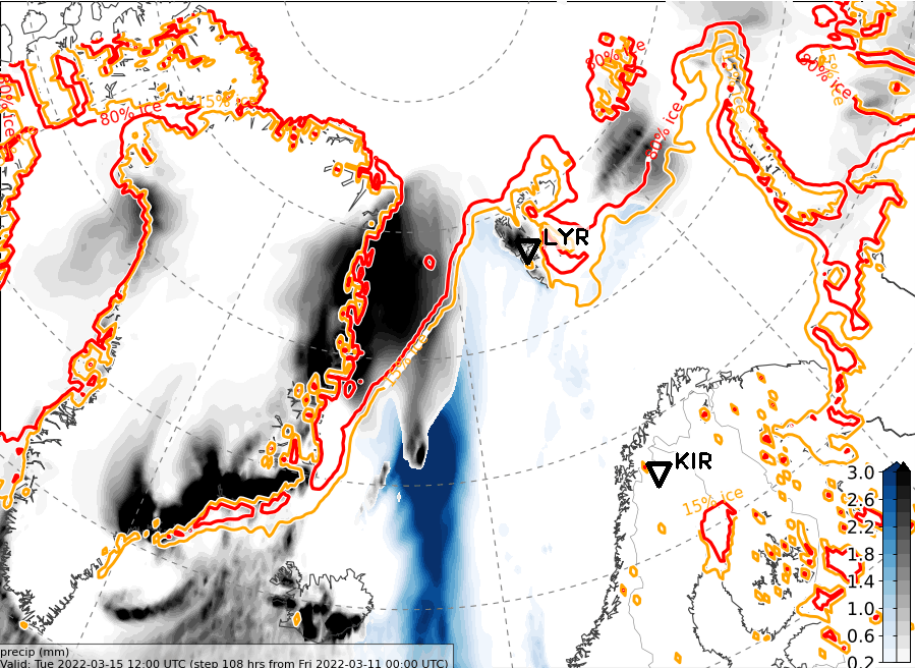


Mon, 2022-03-14 12 UTC (+84h) ECMWF



ICON

Tue, 2022-03-15 12 UTC (+108h) ECMWF

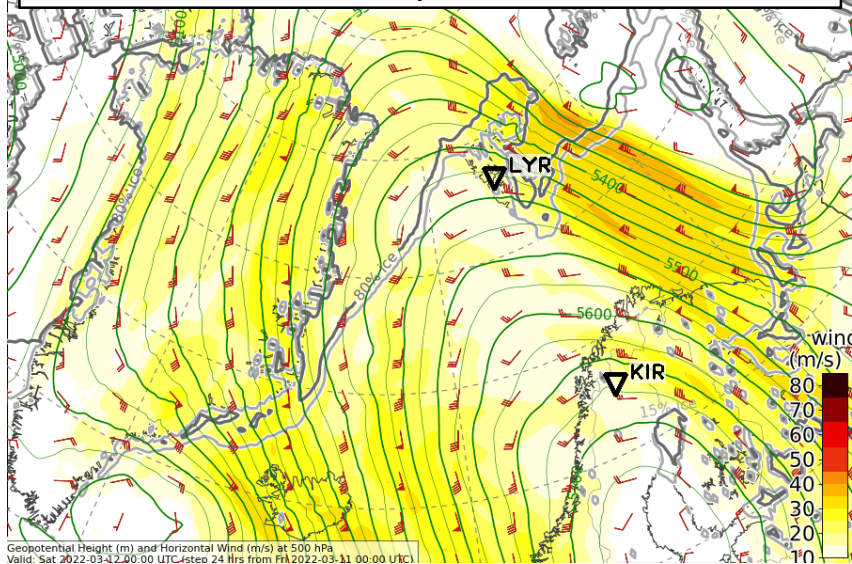


Extra variables

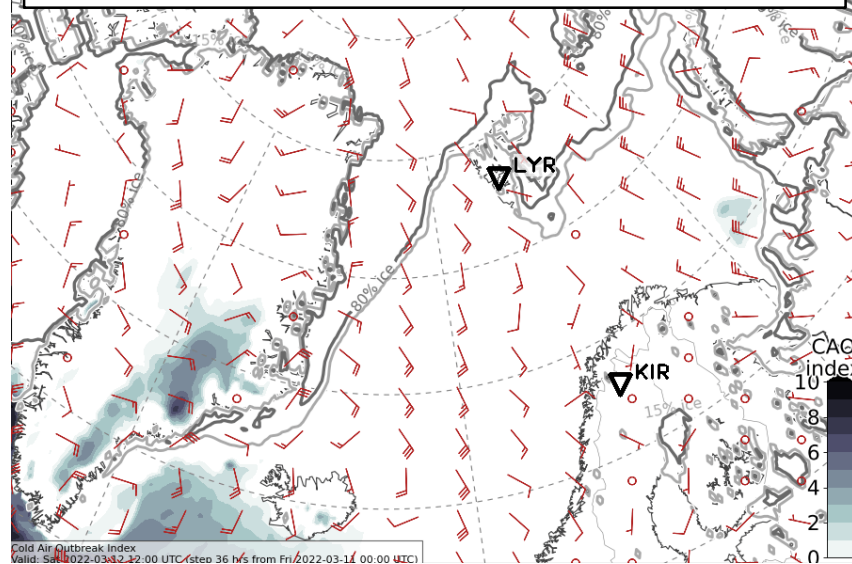
2022-03-02 00 UTC: 00 – 84h
500 hPa wind & 850hPa θ_e & CAO & IVT

Sat, 2022-03-12 12 UTC (+36h)

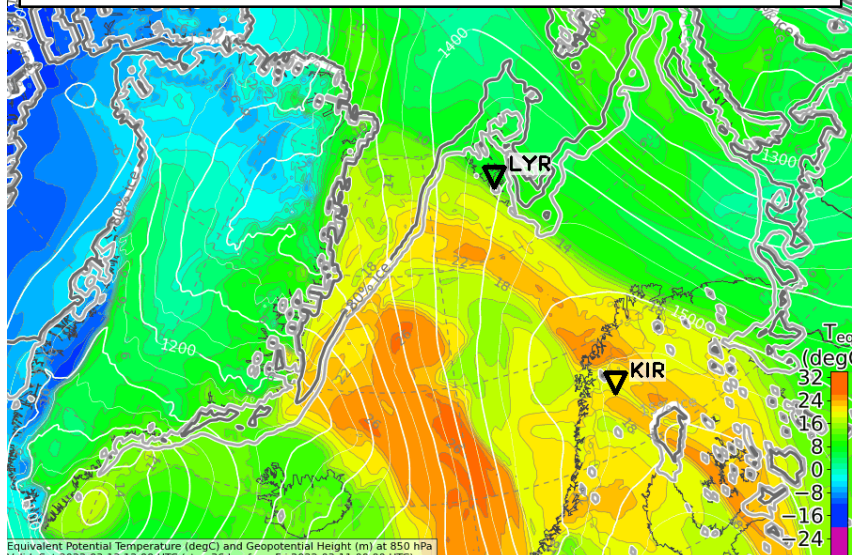
500 hPa Geopot. and Wind



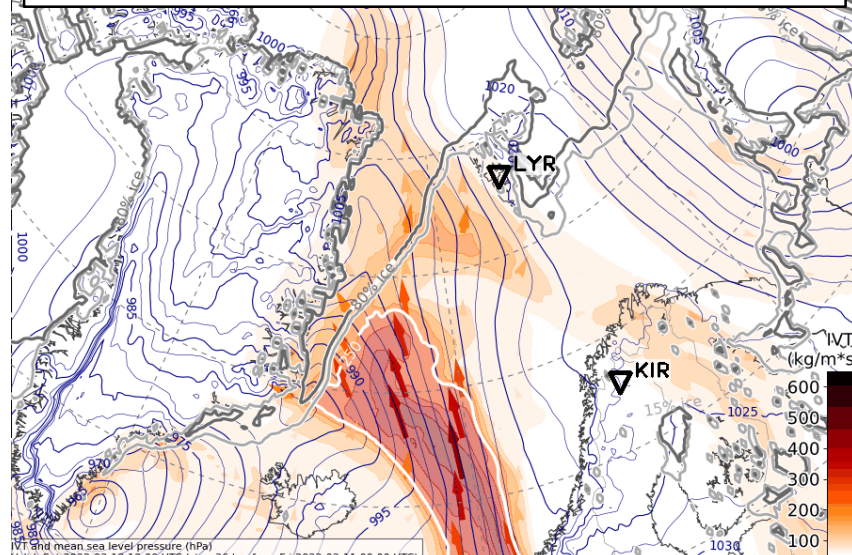
CAO Index



850 hPa Equiv. pot. temperature

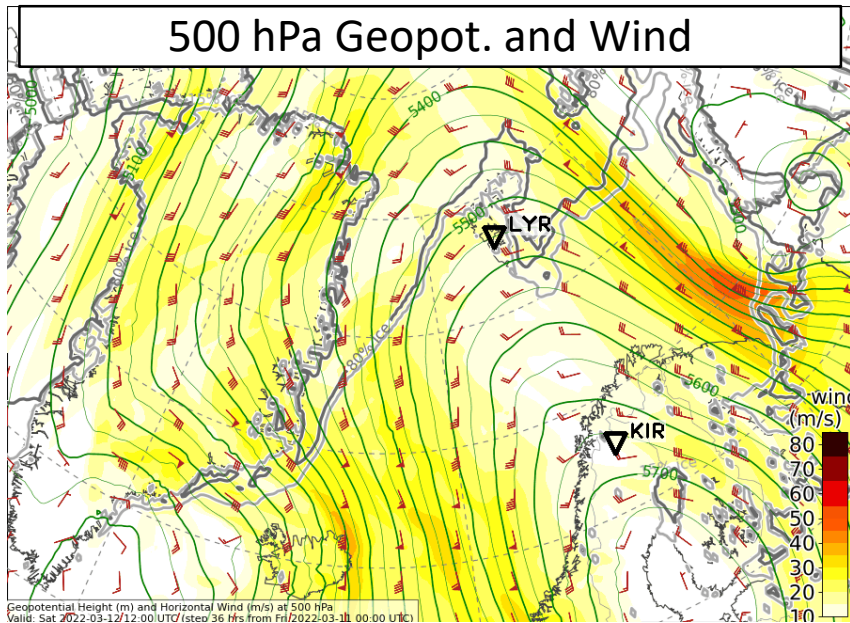


Integrated water vapour transport

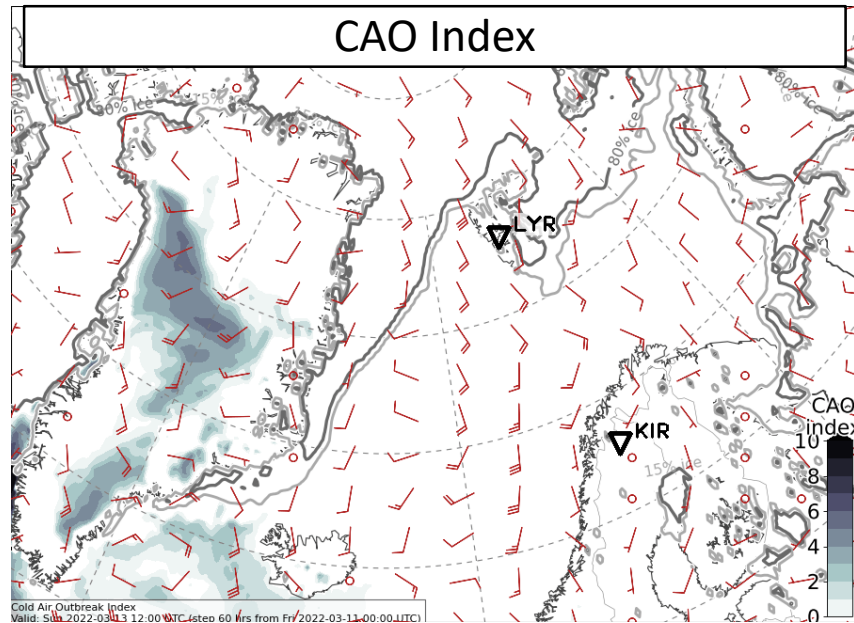


Sun, 2022-03-13 12 UTC (+60h)

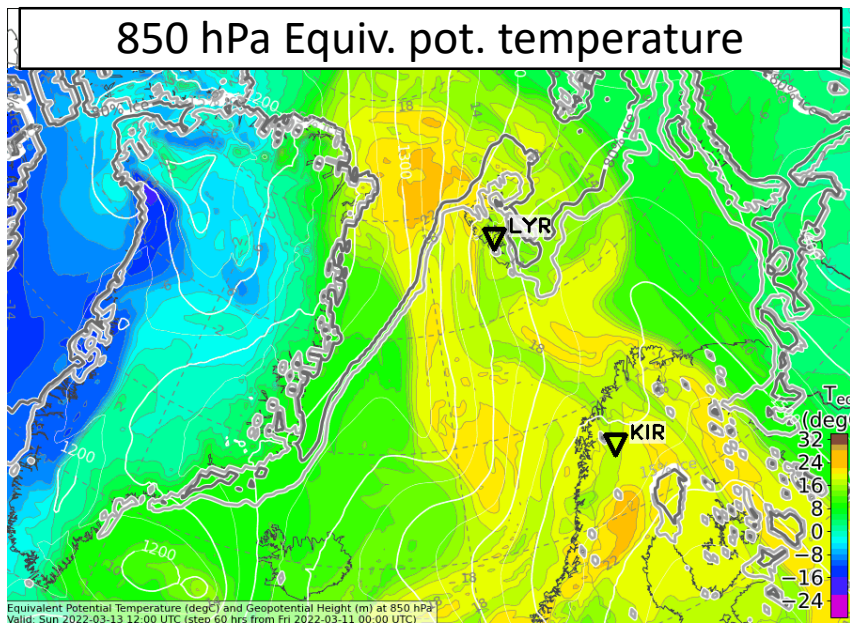
500 hPa Geopot. and Wind



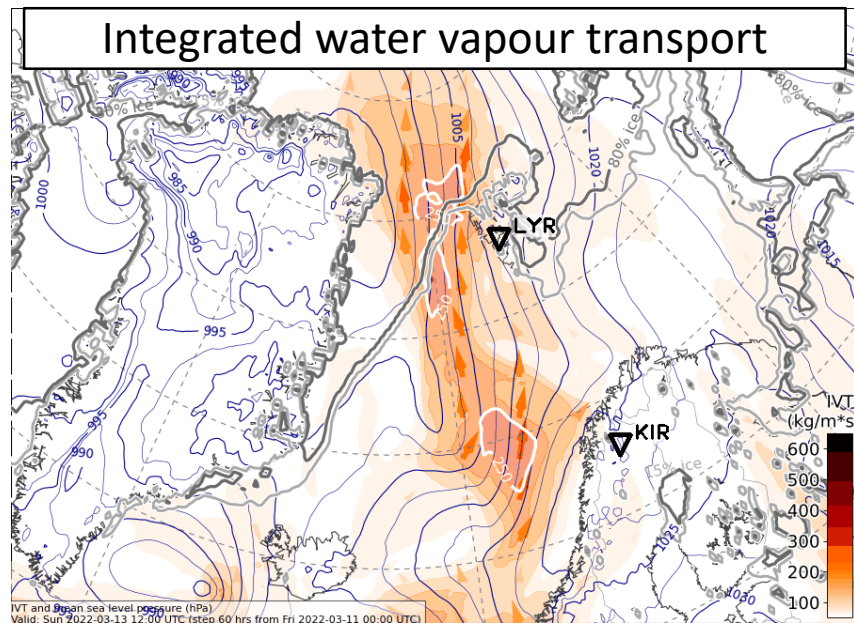
CAO Index



850 hPa Equiv. pot. temperature

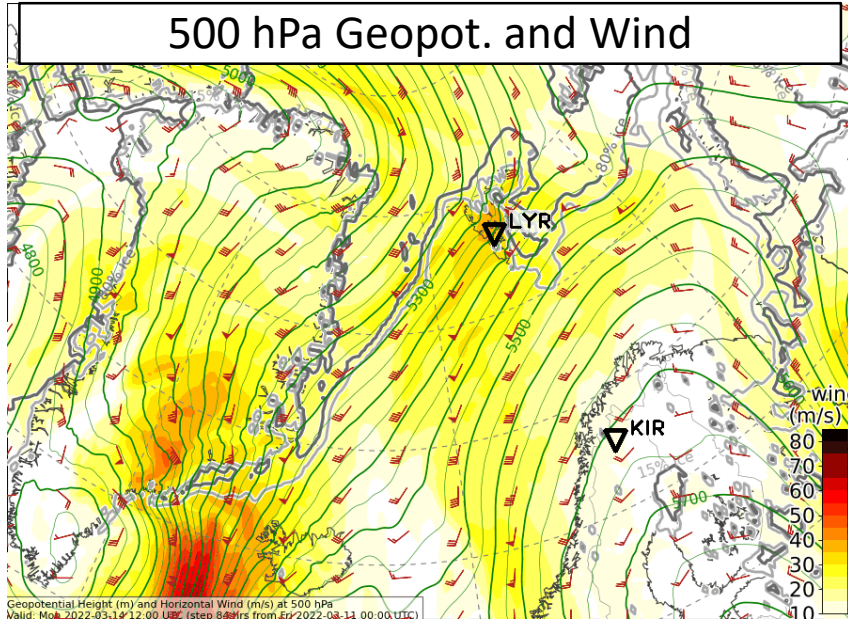


Integrated water vapour transport

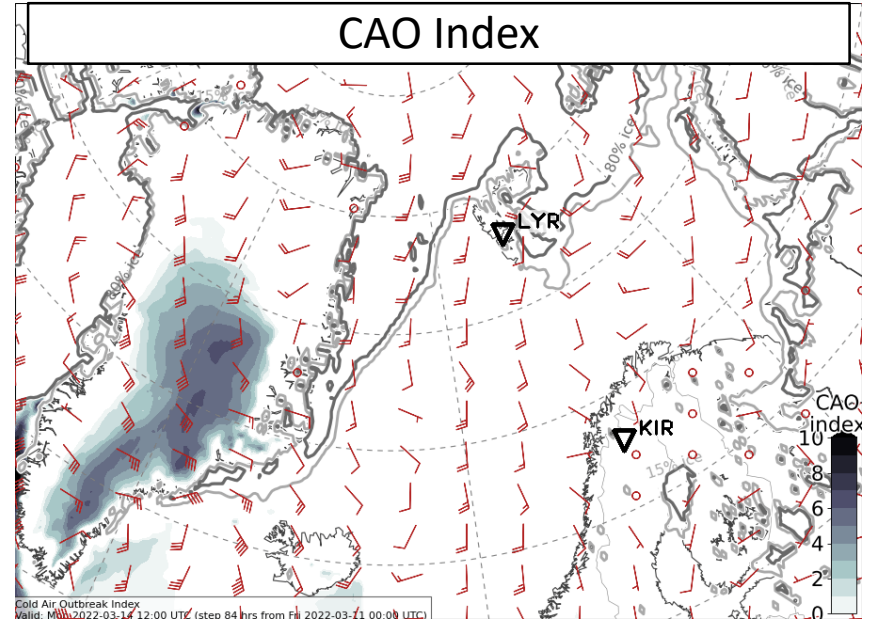


Mon, 2022-03-14 12 UTC (+84h)

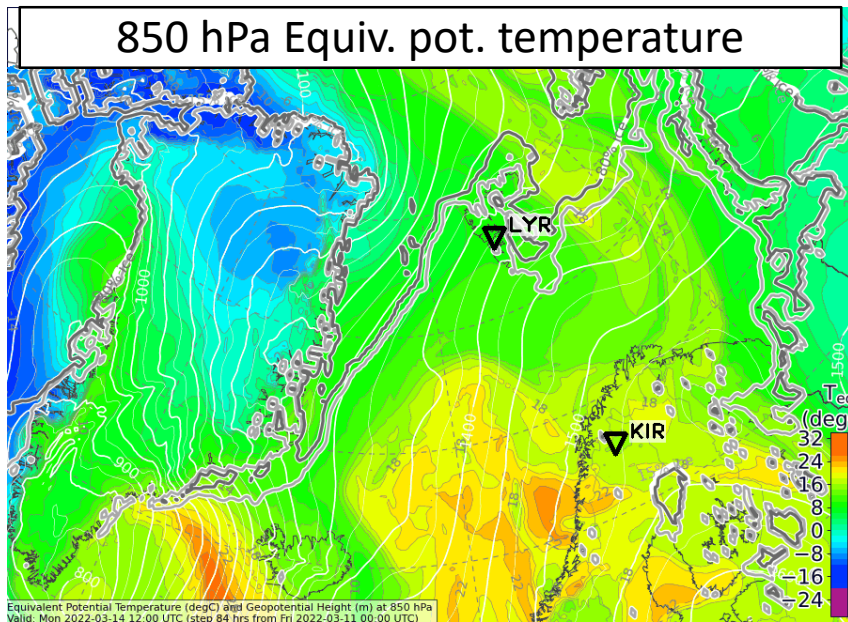
500 hPa Geopot. and Wind



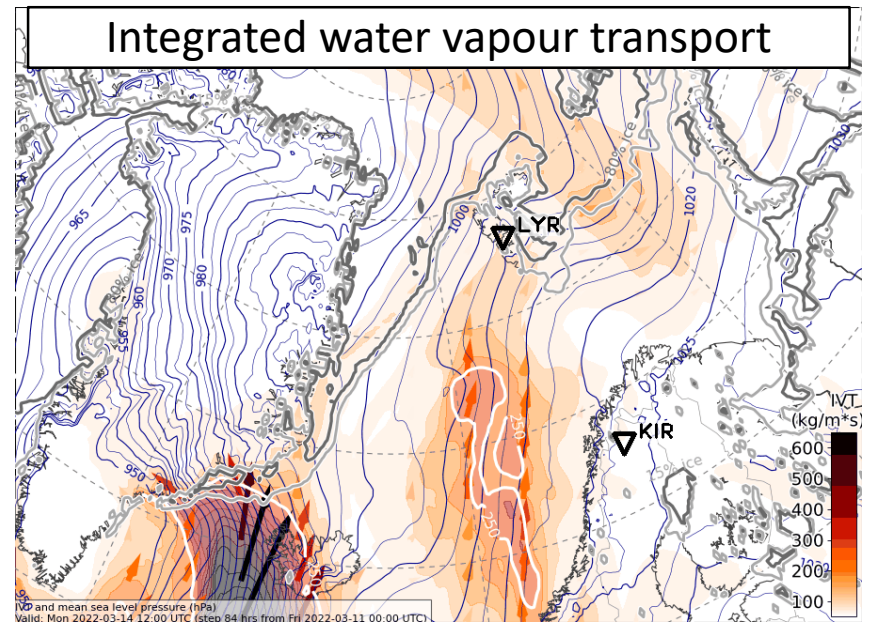
CAO Index



850 hPa Equiv. pot. temperature

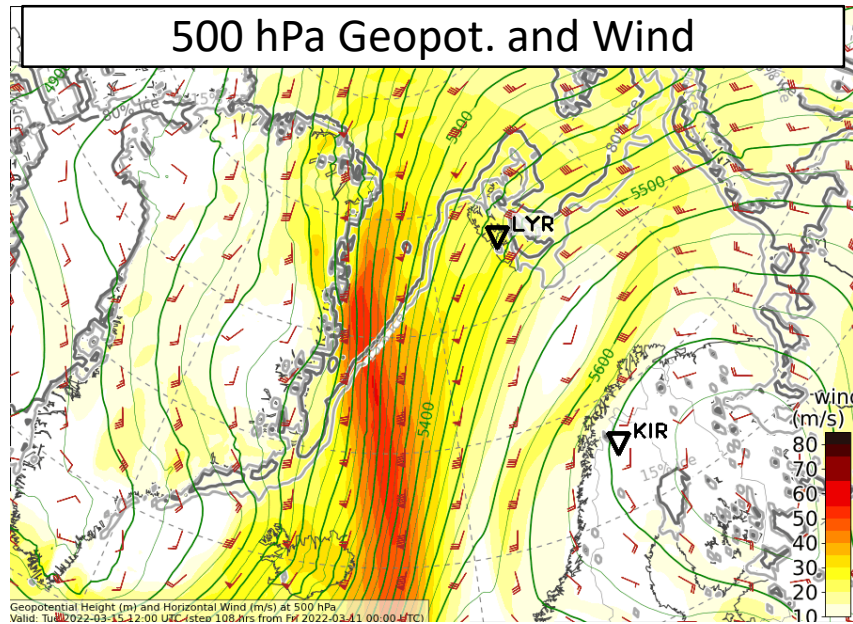


Integrated water vapour transport

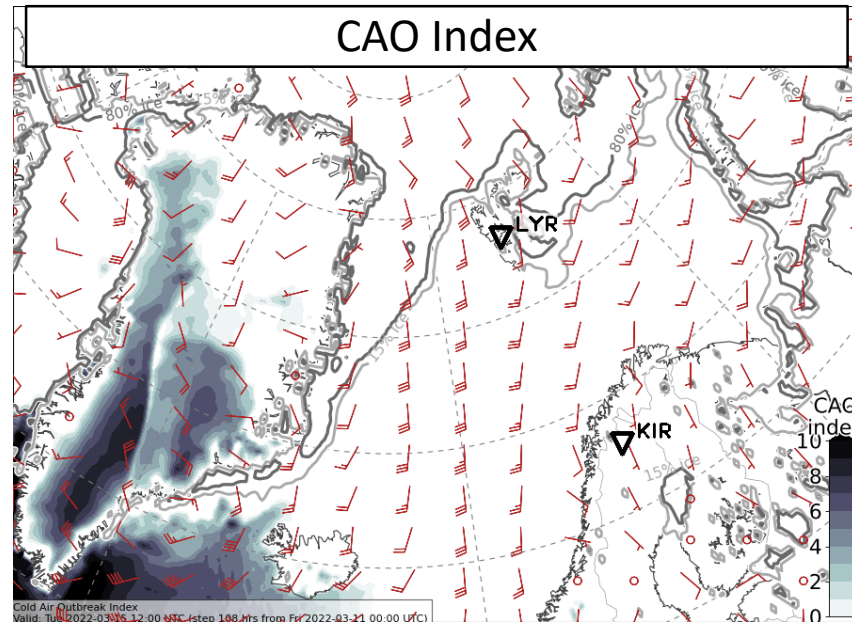


Tue, 2022-03-15 12 UTC (+108h)

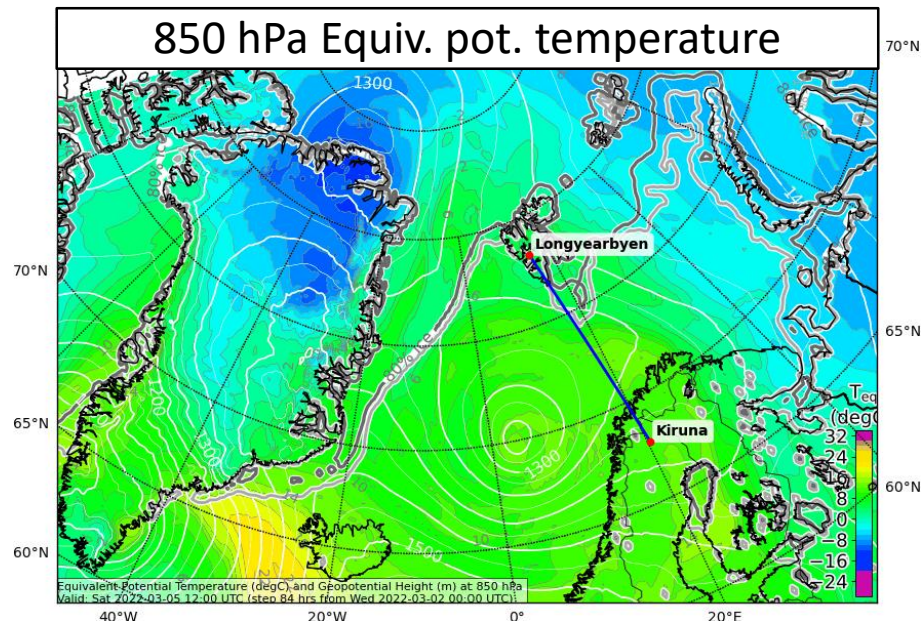
500 hPa Geopot. and Wind



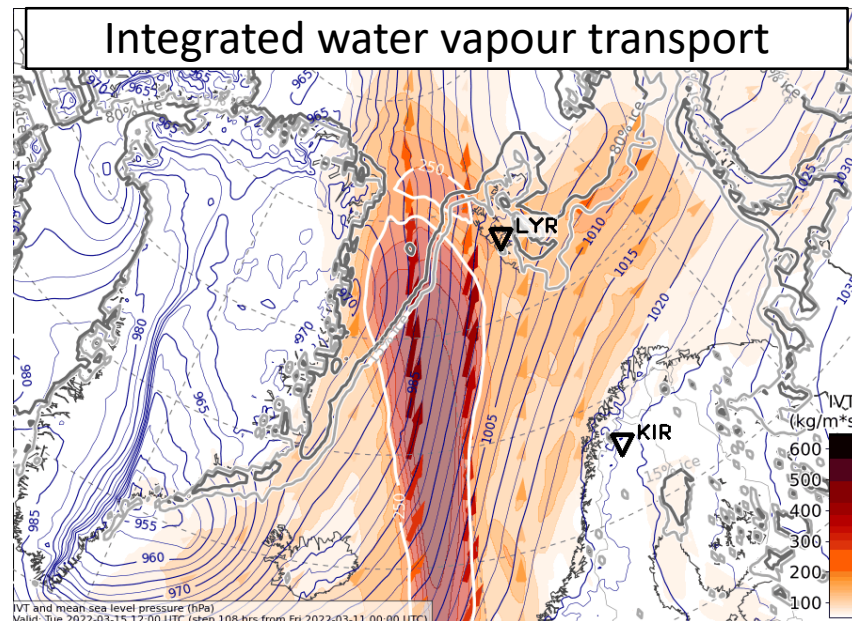
CAO Index



850 hPa Equiv. pot. temperature

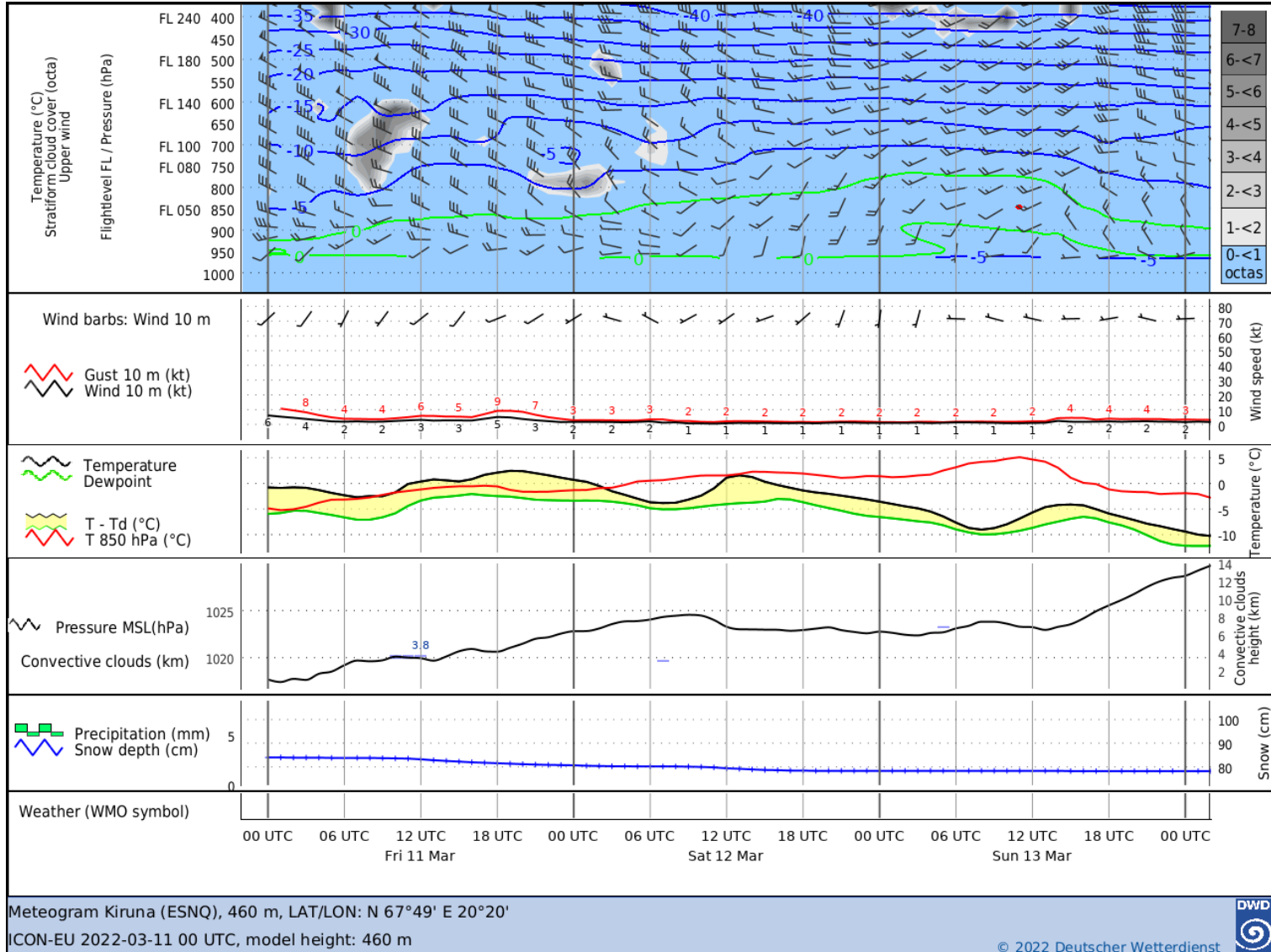


Integrated water vapour transport

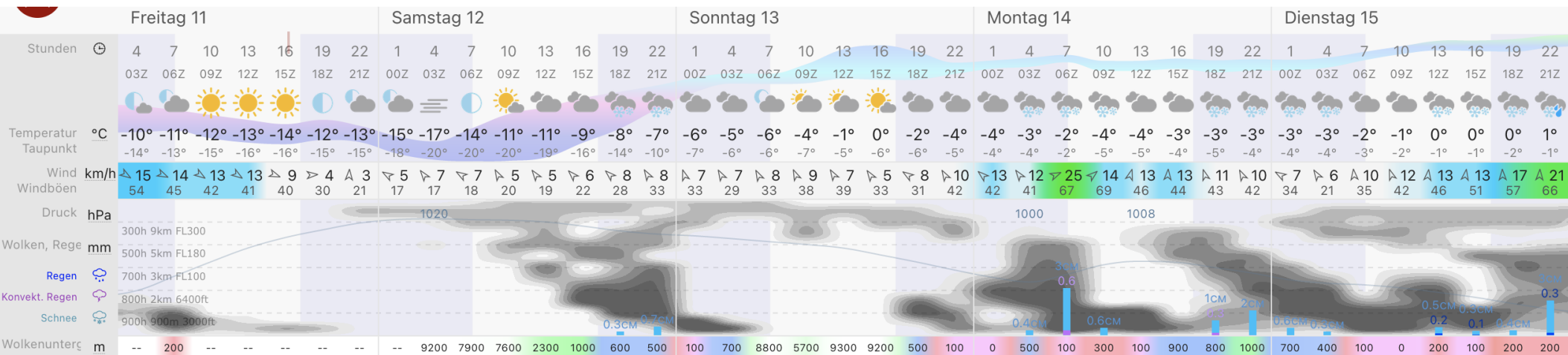


Airport meteograms
2022-03-02 00 UTC: 00 – 72h

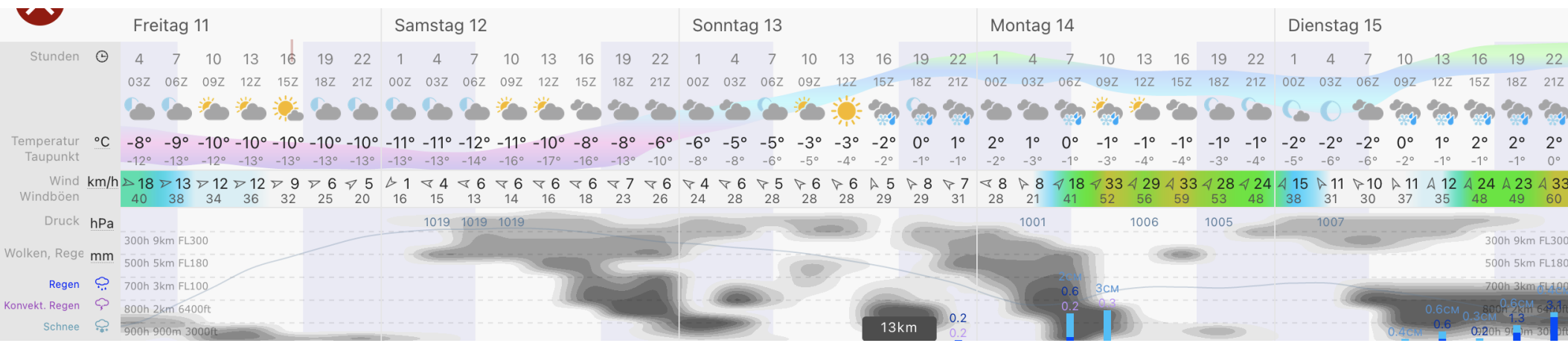
Kiruna:



LYR: ECMWF



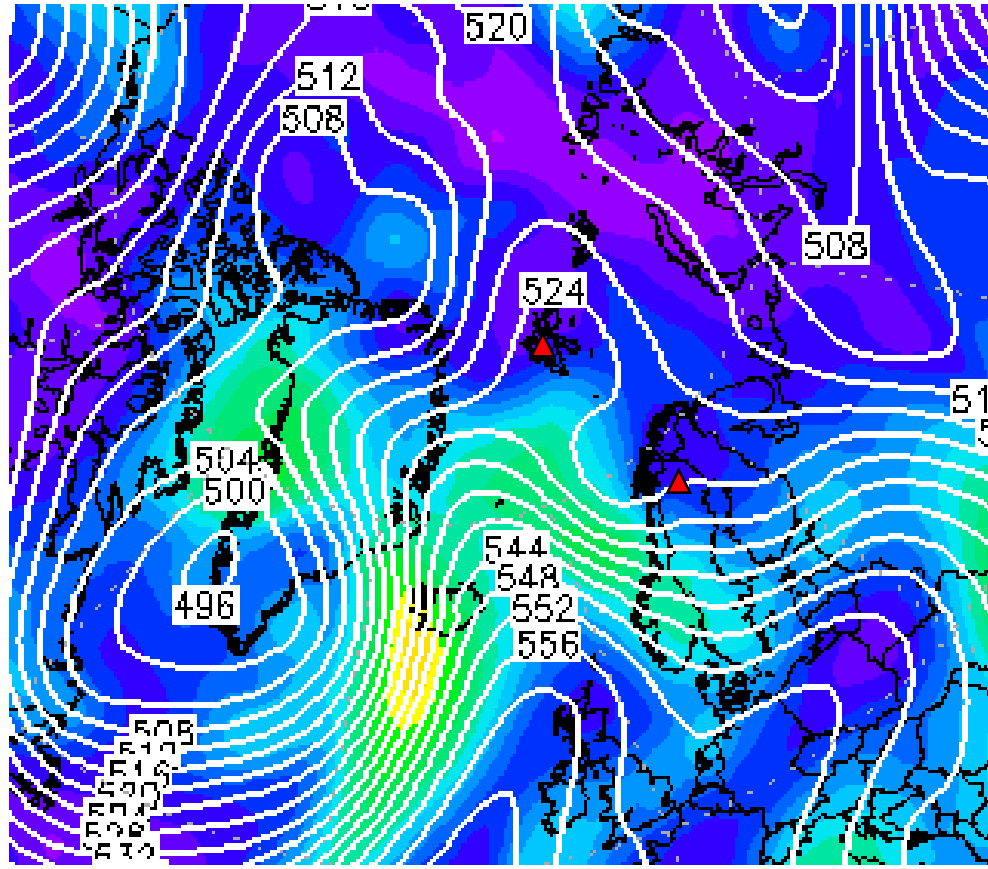
LYR: ICON



Forecast uncertainty
2022-03-02 00 UTC: 72 – 96h

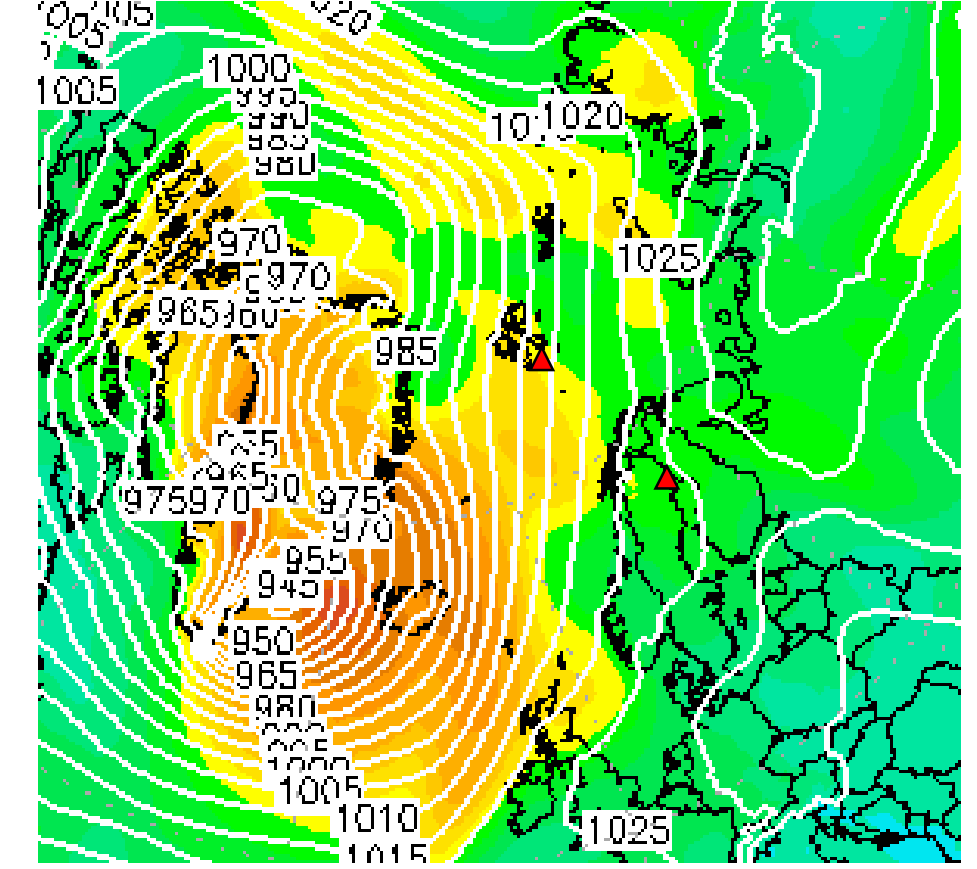
Tuesday, 2022-03-15 00 UTC (+108h)

500 hPa Geopot



gdam

Sfc pressure



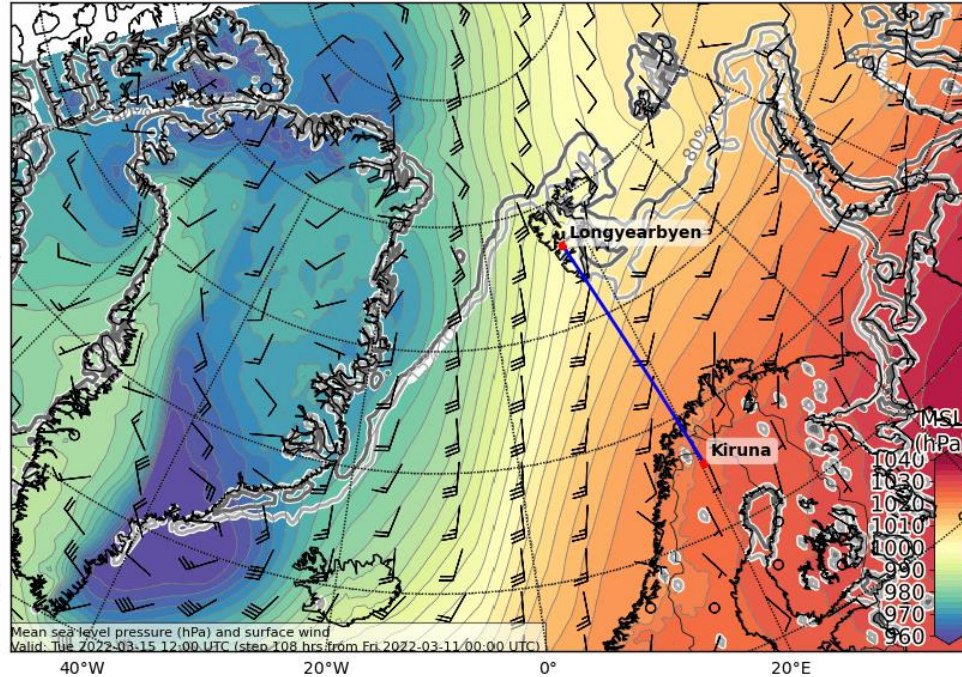
hPa

Tuesday, 2022-03-15 (+108h)

ECMWF

Mean Sea Level Pressure (hPa)

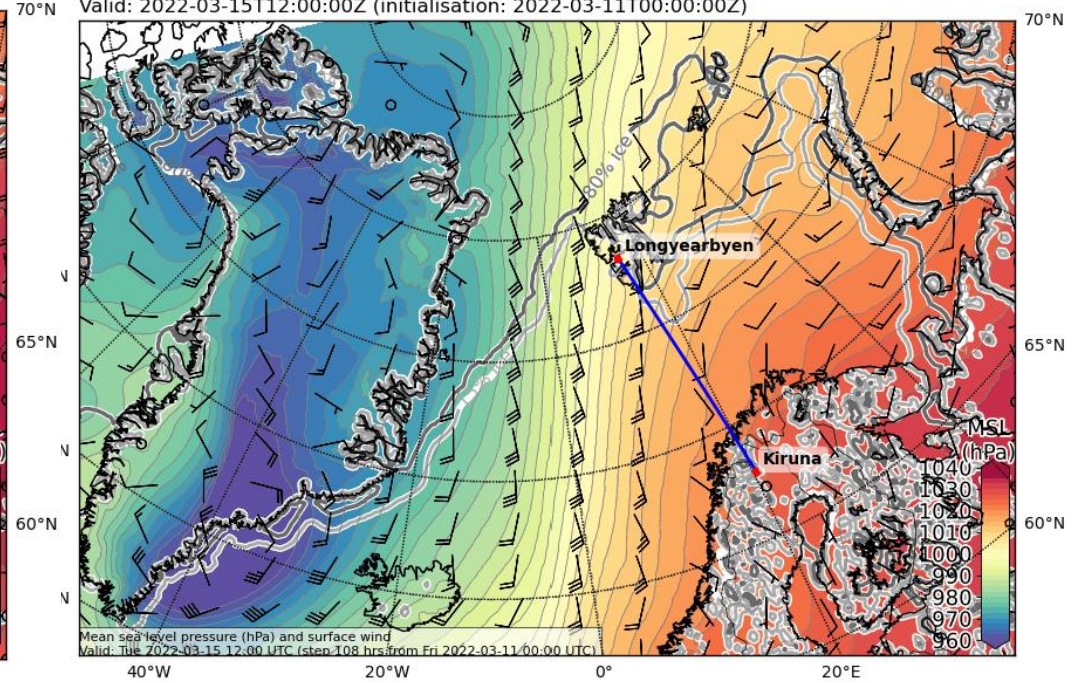
Valid: 2022-03-15T12:00:00Z (initialisation: 2022-03-11T00:00:00Z)



ICON

Mean Sea Level Pressure (hPa)

Valid: 2022-03-15T12:00:00Z (initialisation: 2022-03-11T00:00:00Z)



Summary

Summary: Weather Briefing 2022-03-11

Saturday, 2022-03-12:

- WAI through Fram Strait

Sunday, 2022-03-13:

- WAI still on the way to the pole, intensification in high arctic,
- Inflow region south of Svalbard weakens.

Monday, 2022-03-14:

- Warm air still on the way to the arctic, but wave disturbances
- Moderate

Tuesday, 2022-03-15:

- Very intense (maybe exceptional) northward intrusion of warm air and moisture
- Very high precipitation
- Still uncertain but promising phenomena