

Weather briefing

HALO-(AC)³

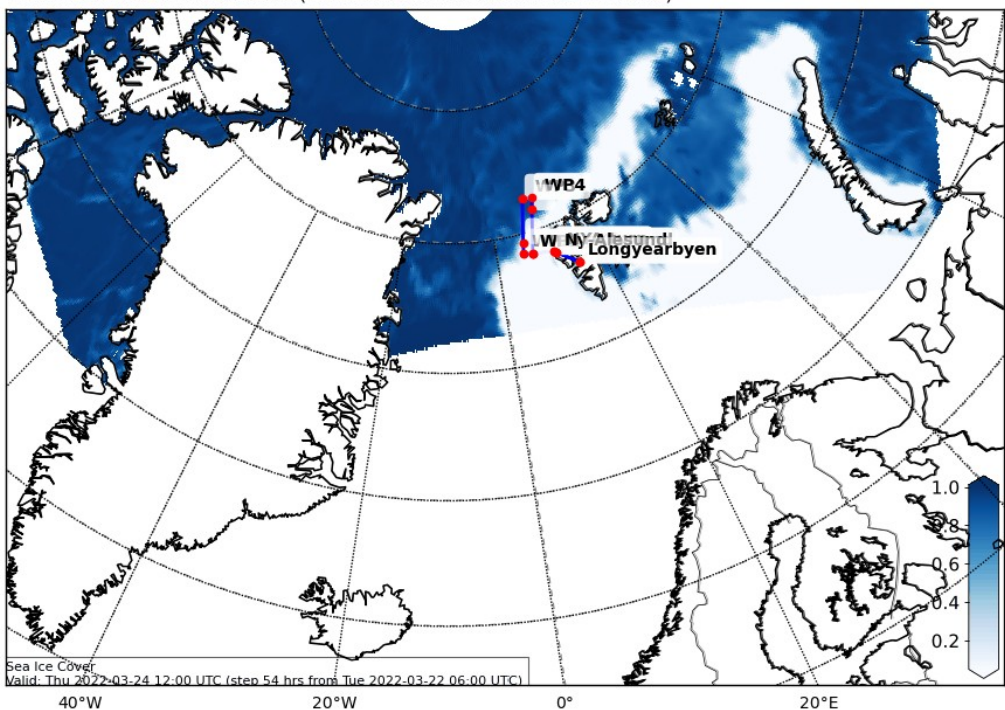
Wednesday, 2022-03-23, 17:00 LT

Sea Ice Cover Forecast
Thursday, 2022-03-24 12 UTC
NOAA, ECMWF

Sea ice: Thursday, 2022-03-24 12 UTC

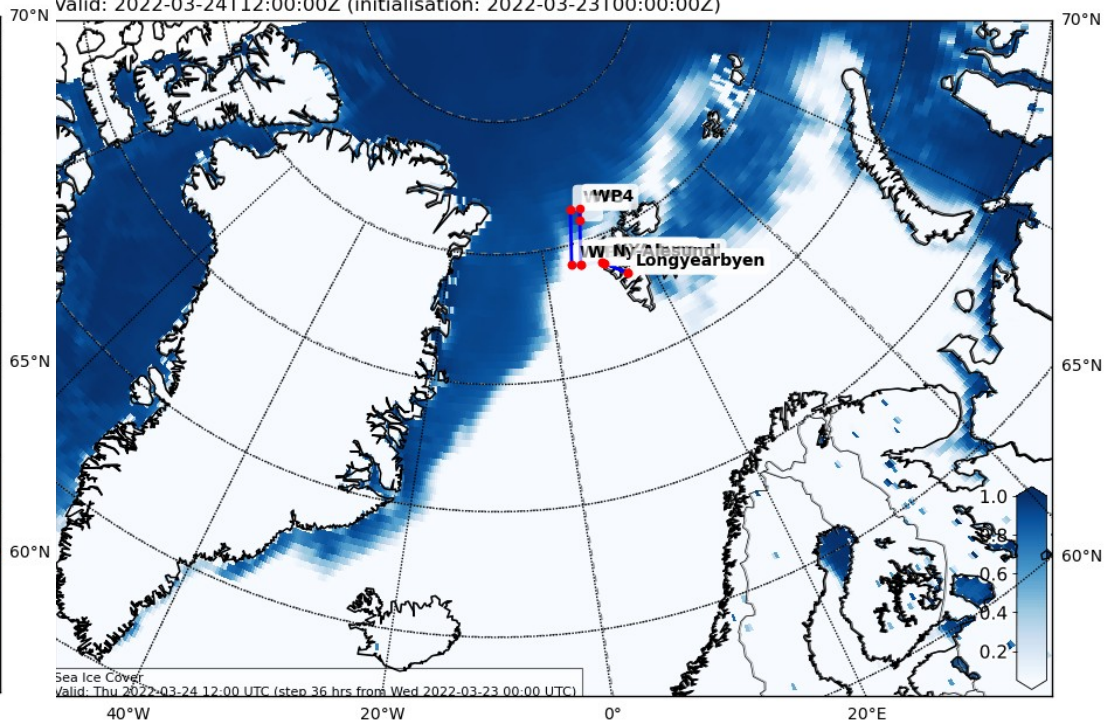
NOAA:

Sea Ice Cover Forecast (0-1) (default)
Valid: 2022-03-24T12:00:00Z (initialisation: 2022-03-22T06:00:00Z)



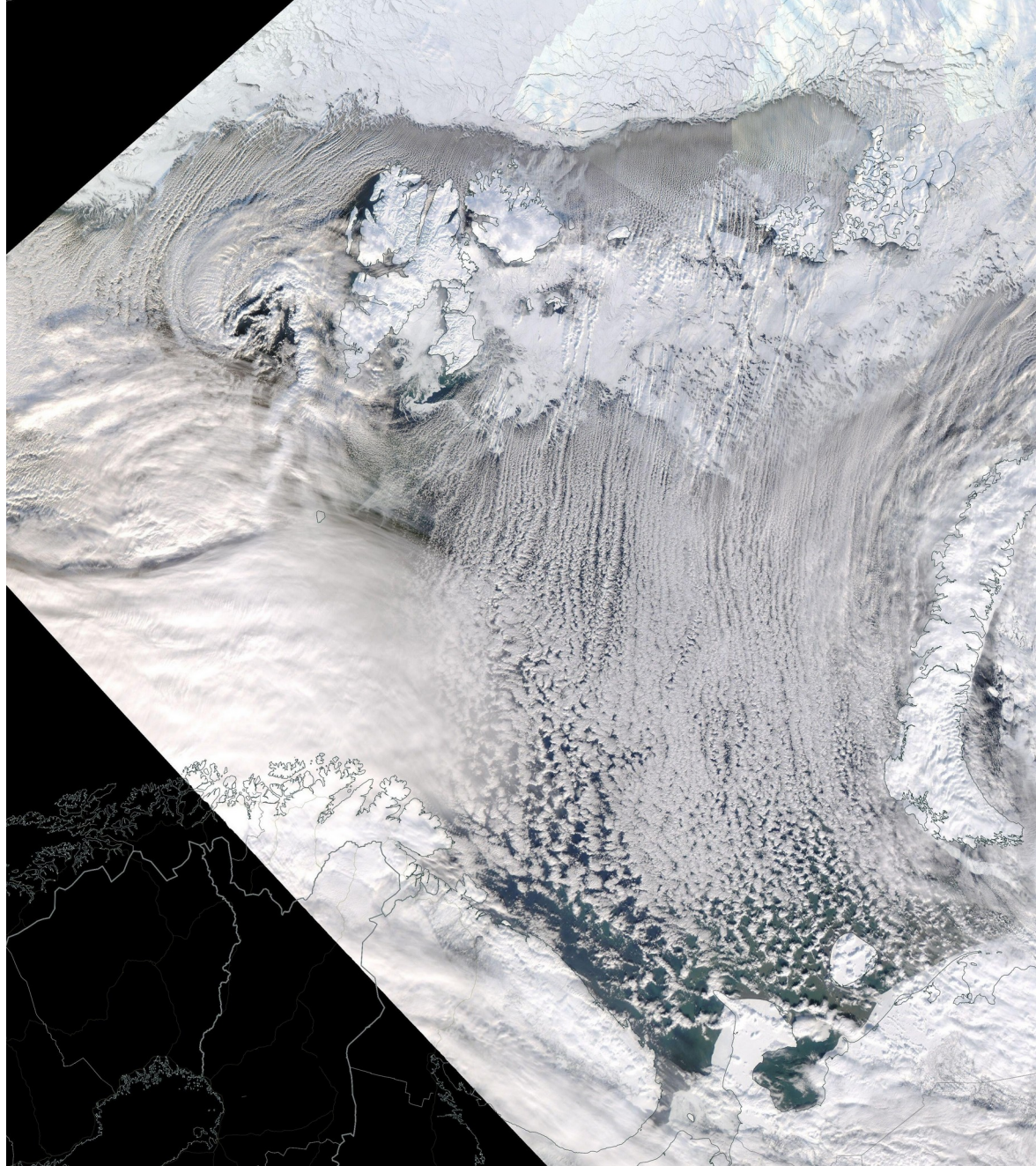
ECMWF:

Sea Ice Cover Fraction (0-1) (default)
Valid: 2022-03-24T12:00:00Z (initialisation: 2022-03-23T00:00:00Z)

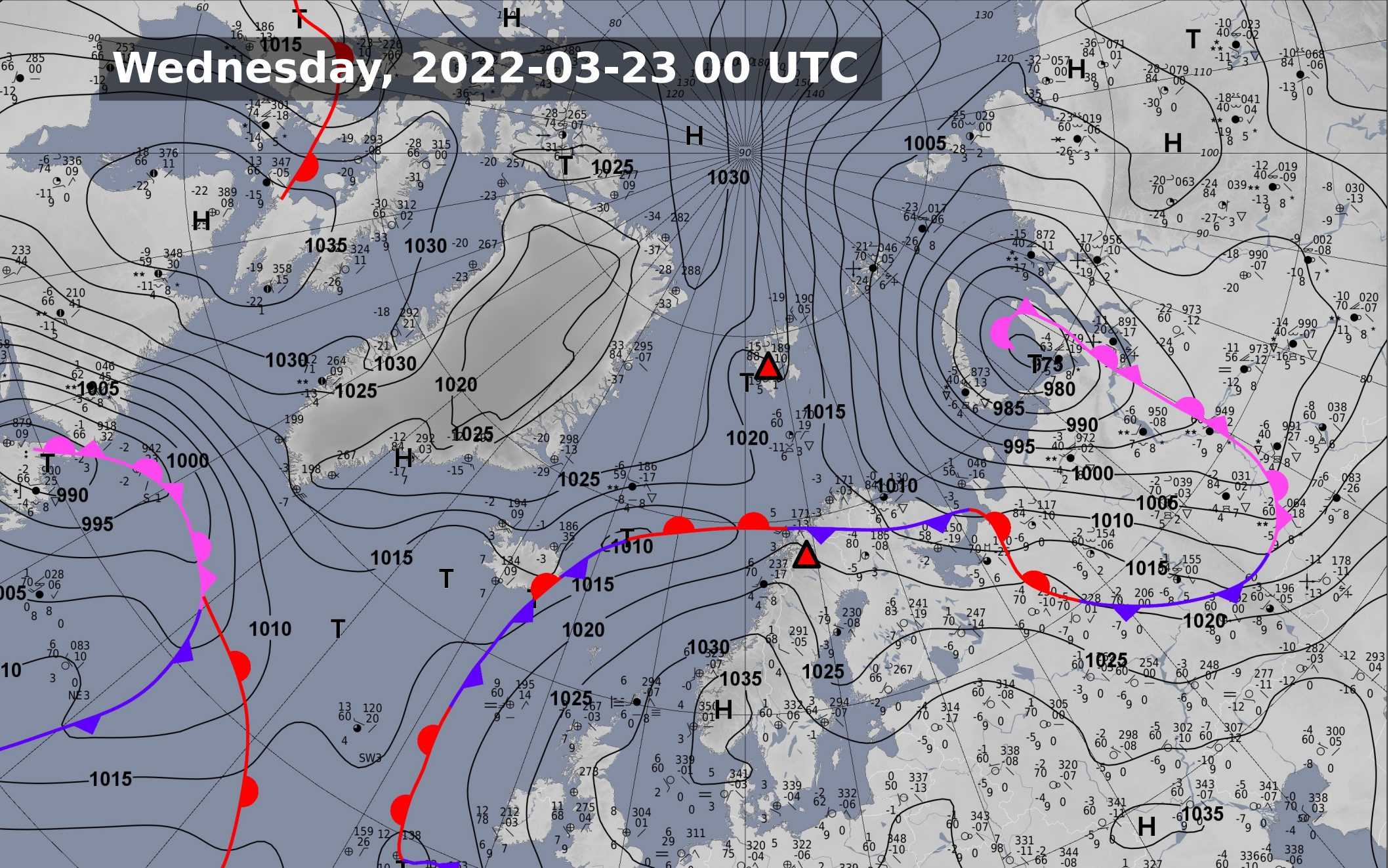


Surface Analysis

Wednesday, 2022-03-23 00 UTC
DWD



Wednesday, 2022-03-23 00 UTC



Surface wind development and precipitation

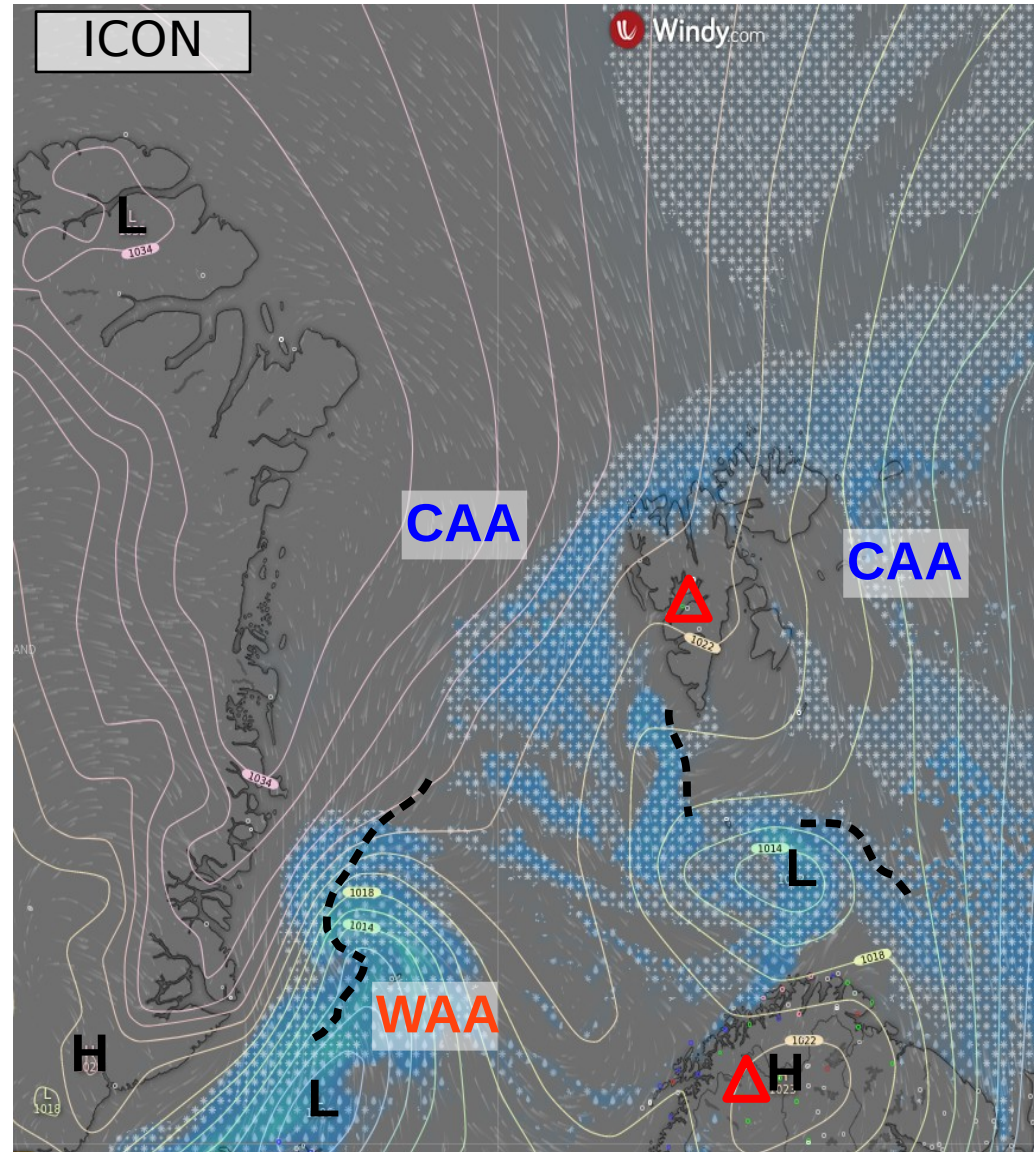
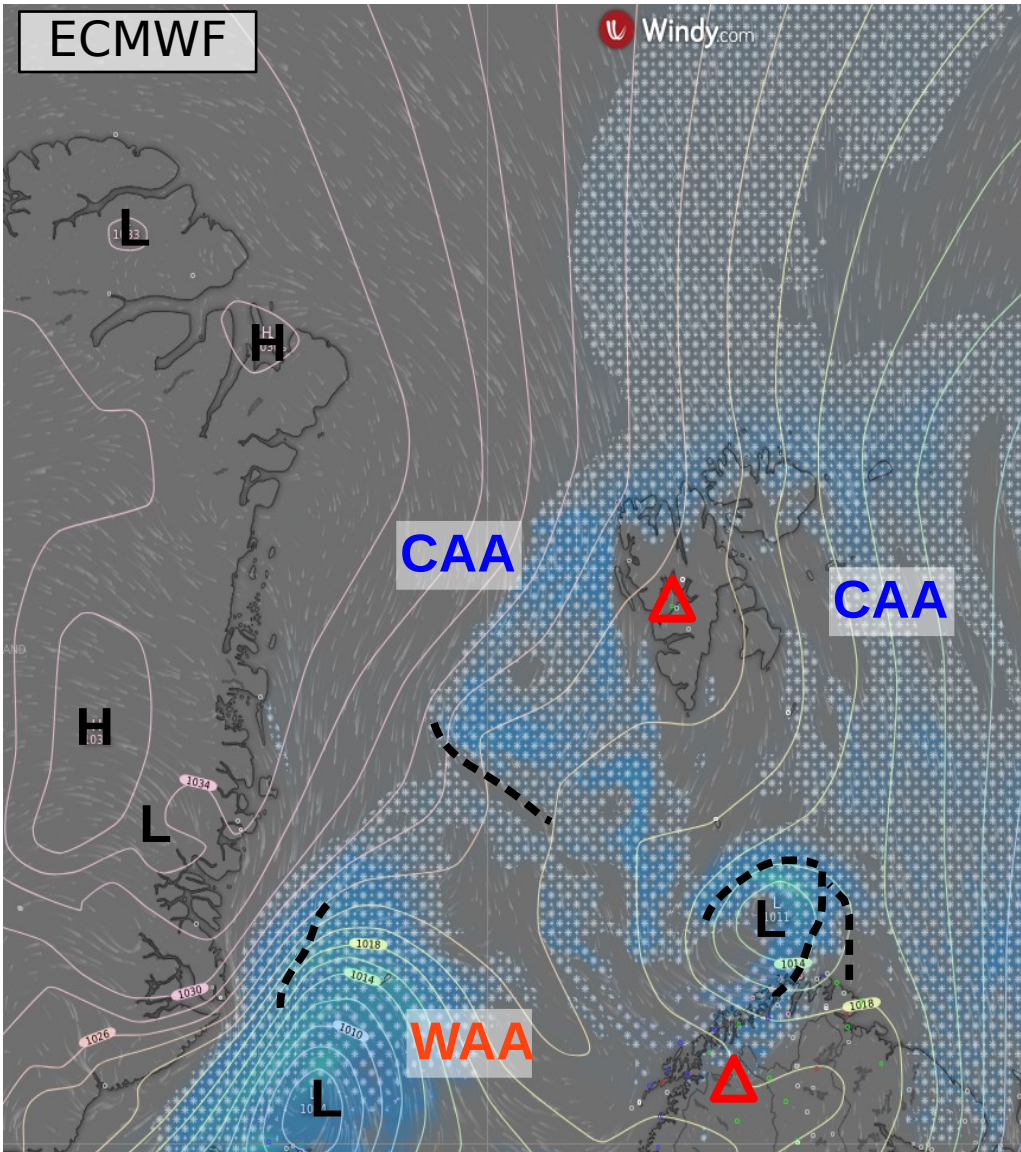
2022-03-23 00 UTC: 36 - 108h

ECMWF & ICON

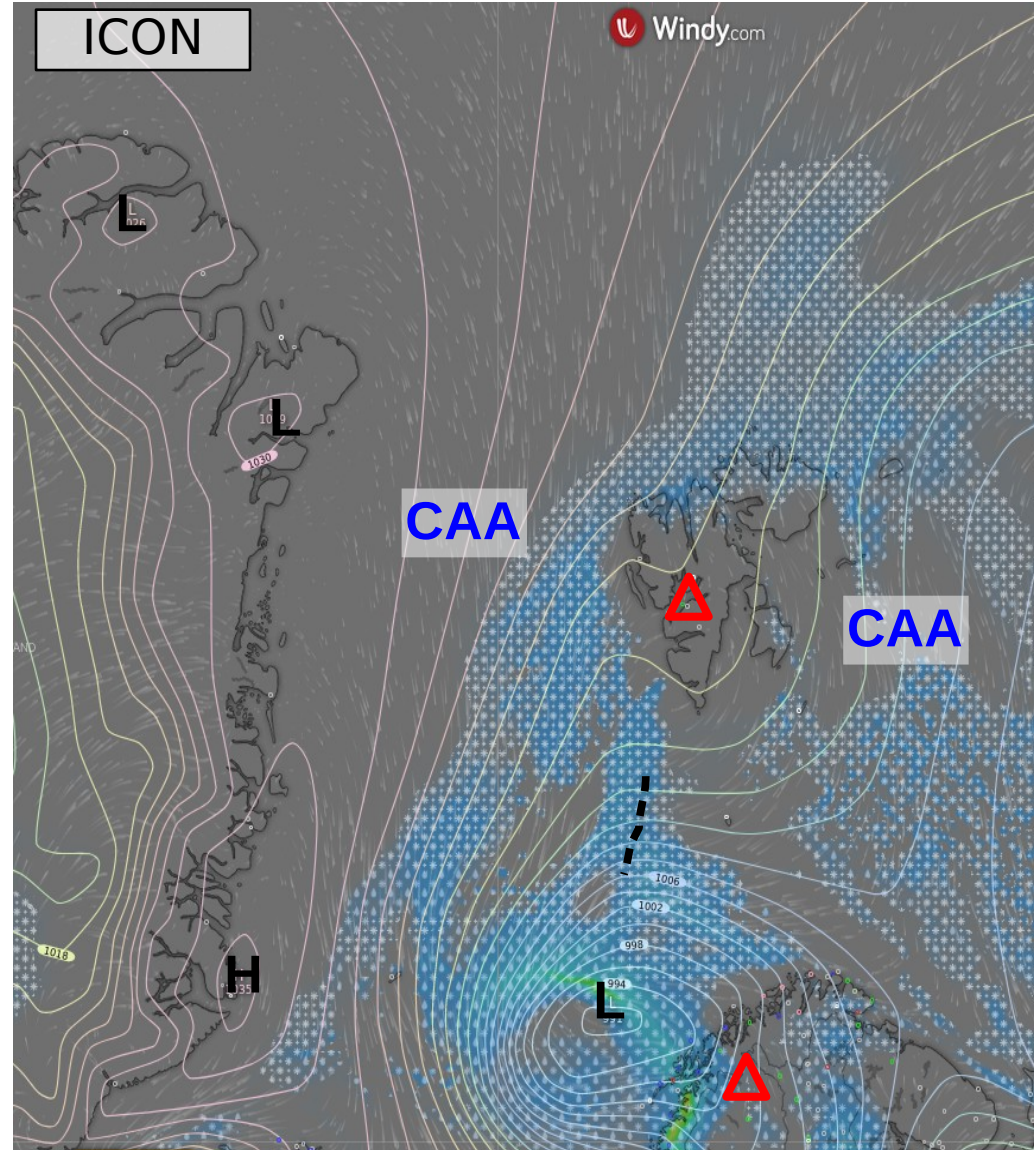
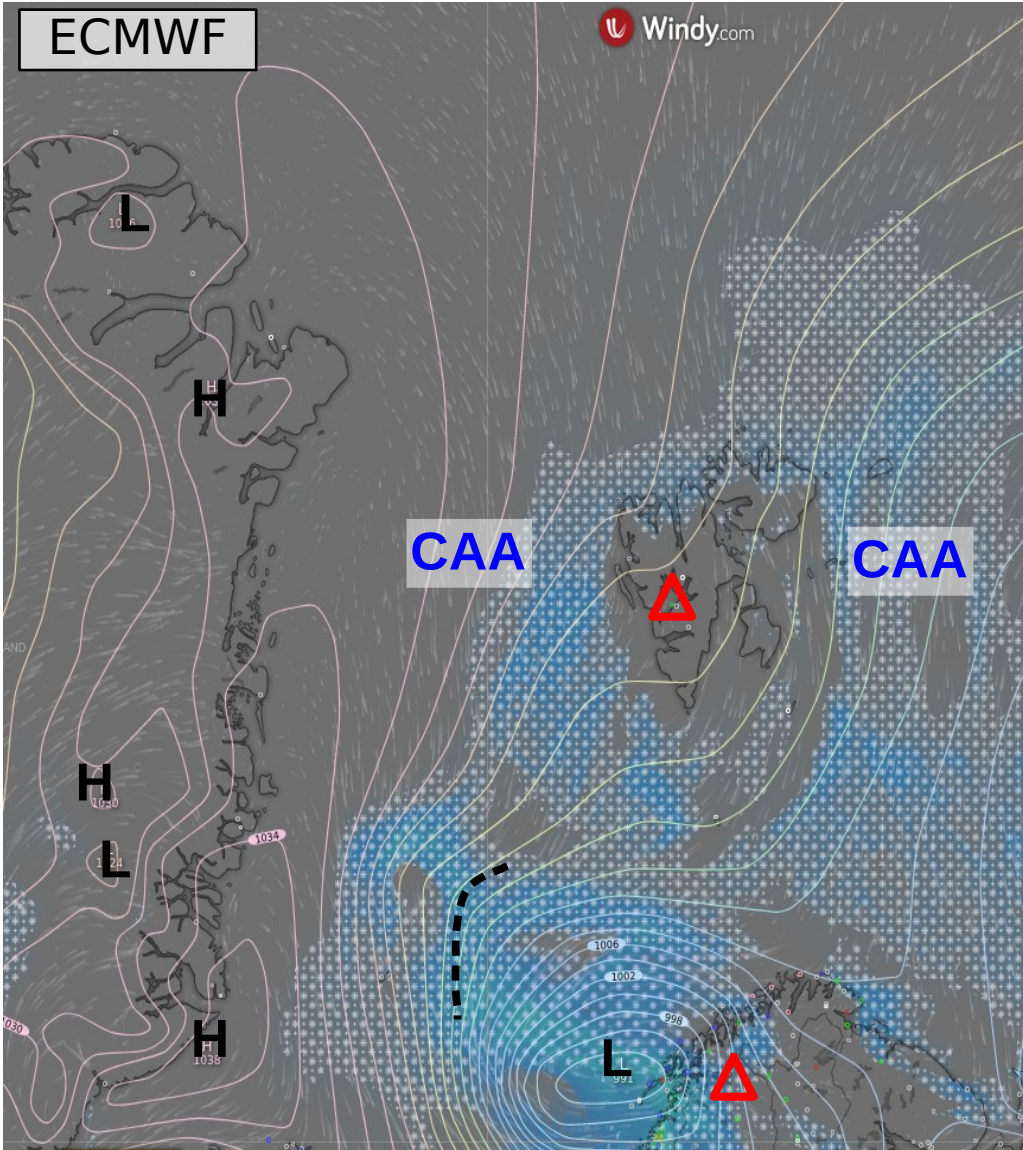
**CAA: Cold Air
Advection**

**WAA: Warm Air
Advection**

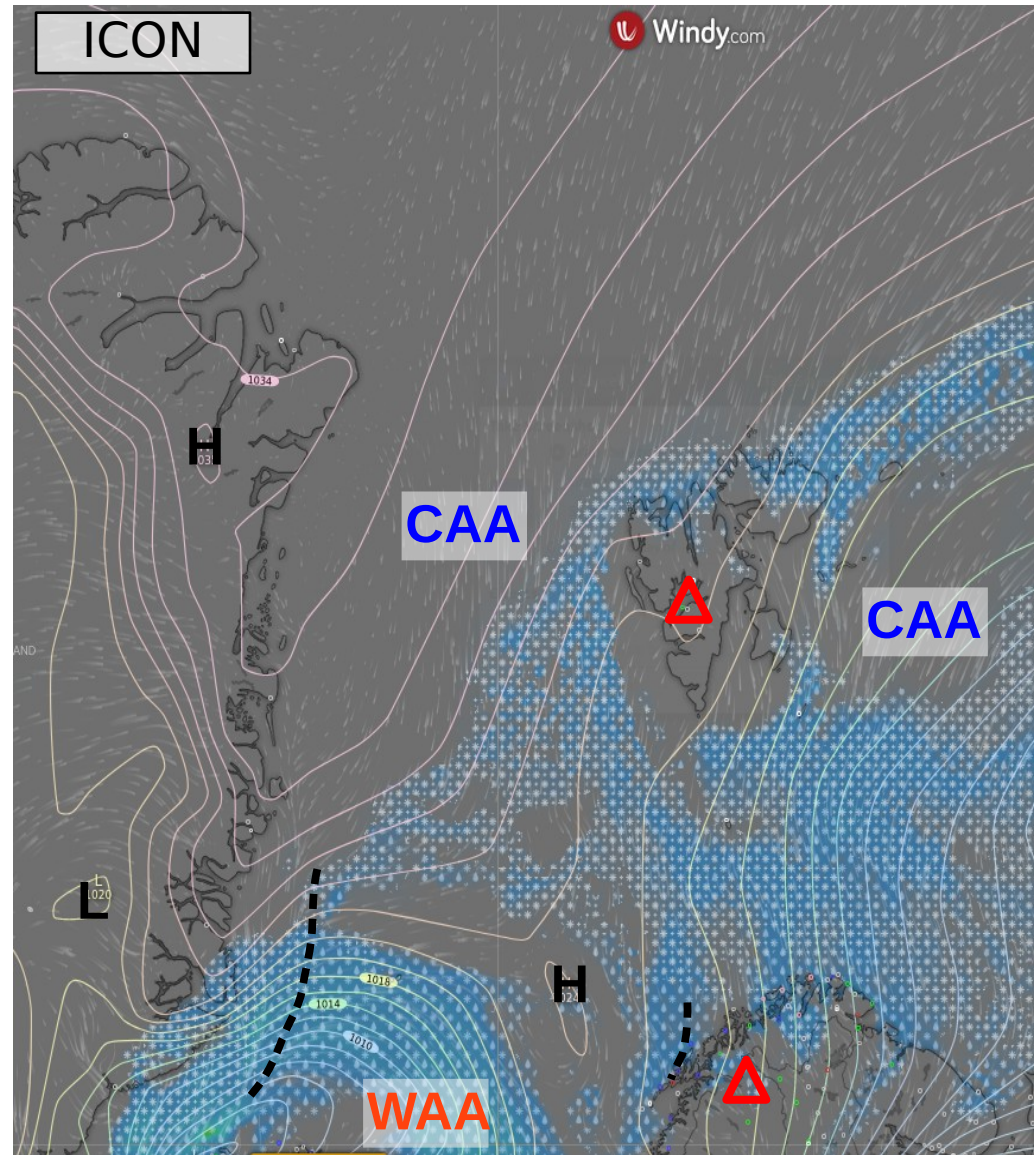
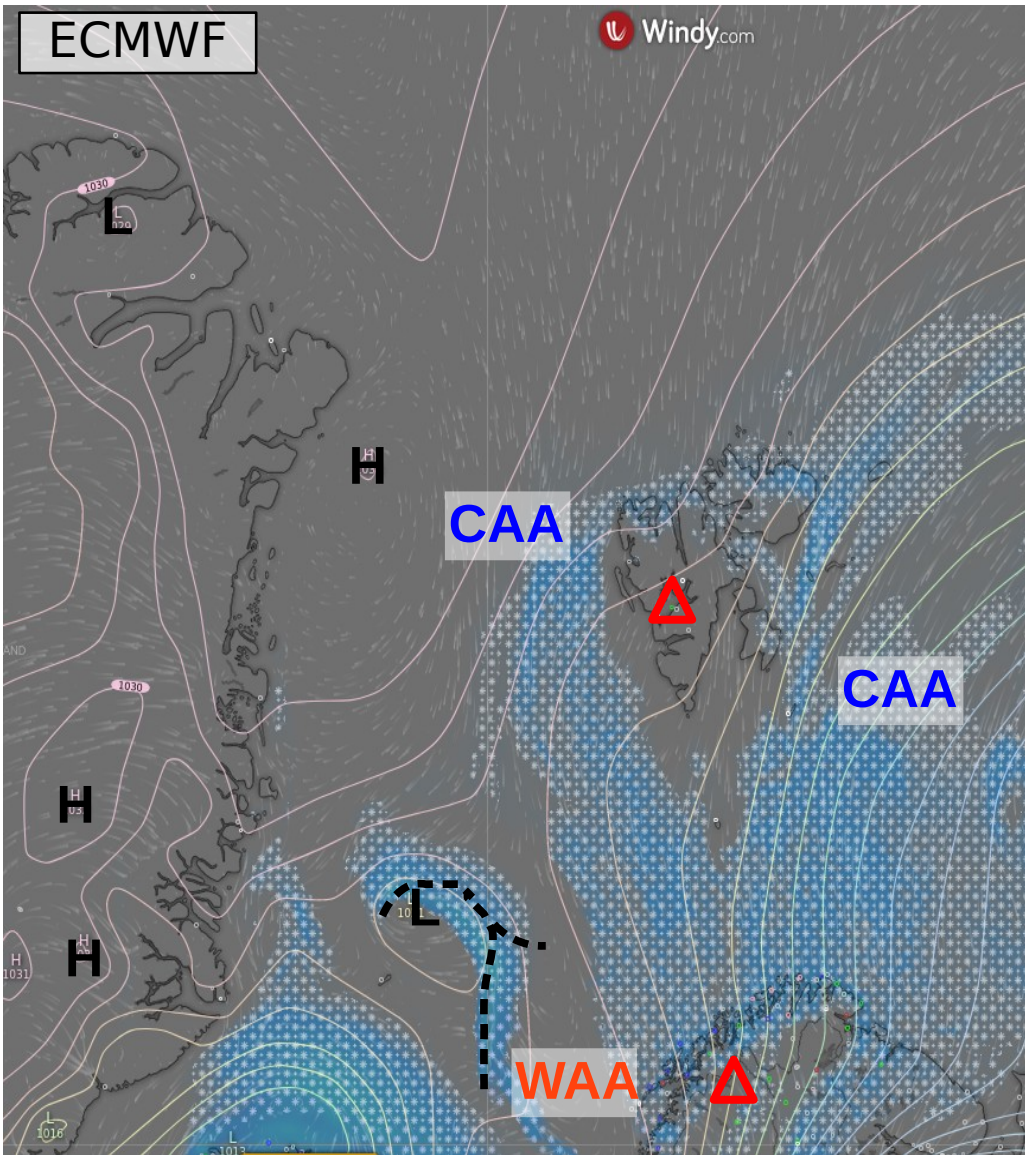
Thursday, 2022-03-24 12 UTC (+36h)



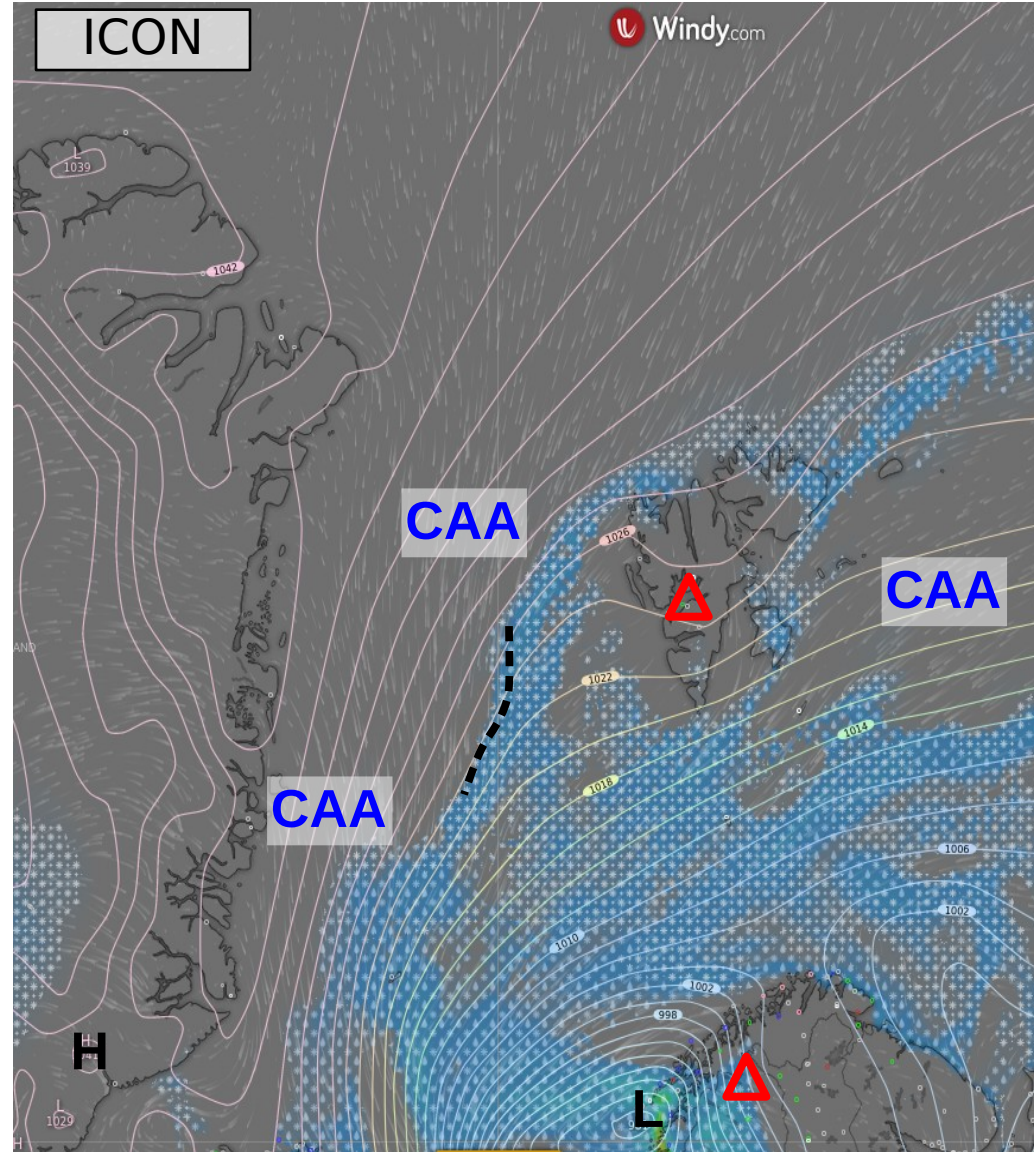
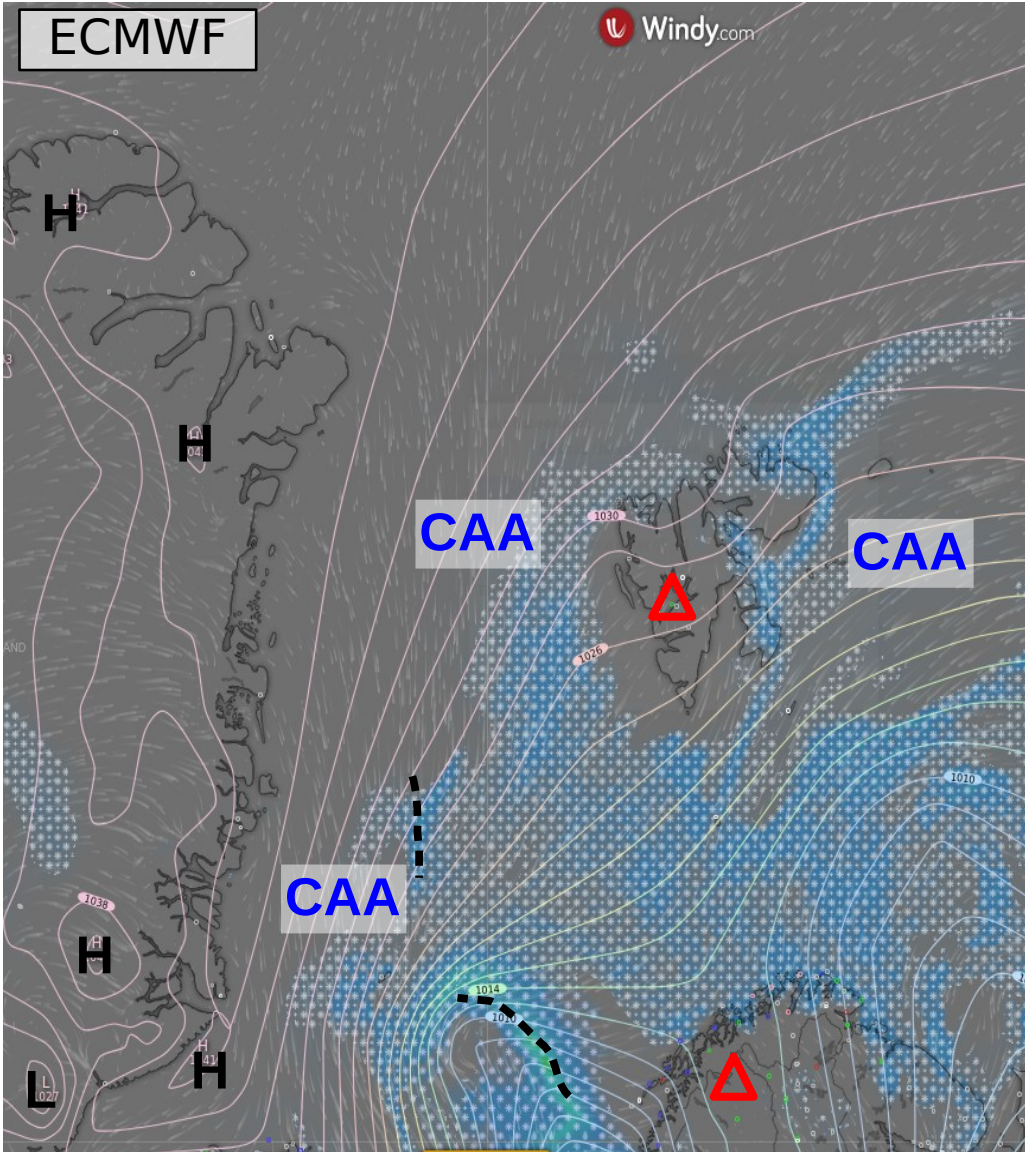
Friday, 2022-03-25 12 UTC (+60h)



Saturday, 2022-03-26 12 UTC (+84h)



Sunday, 2022-03-27 12 UTC (+108h)

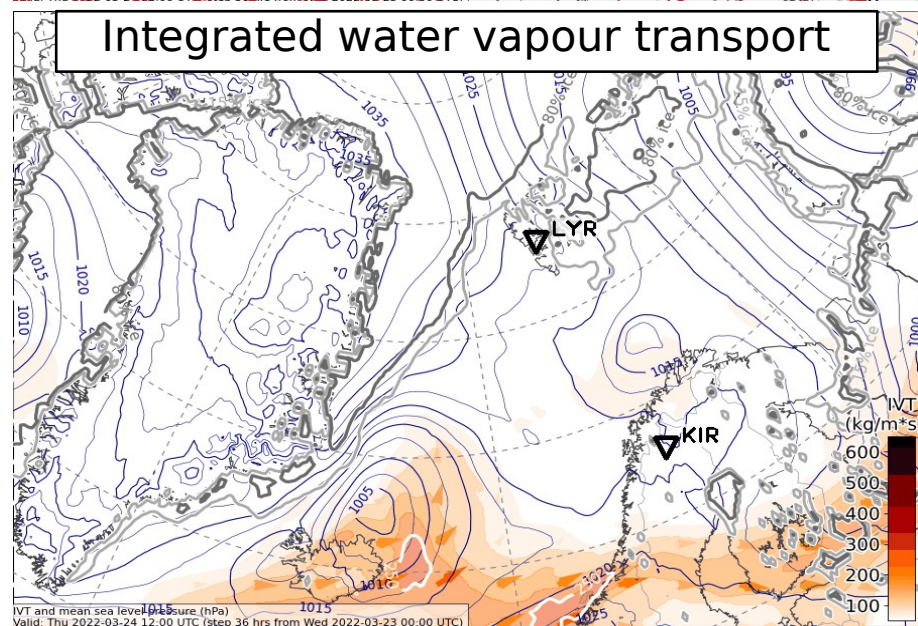
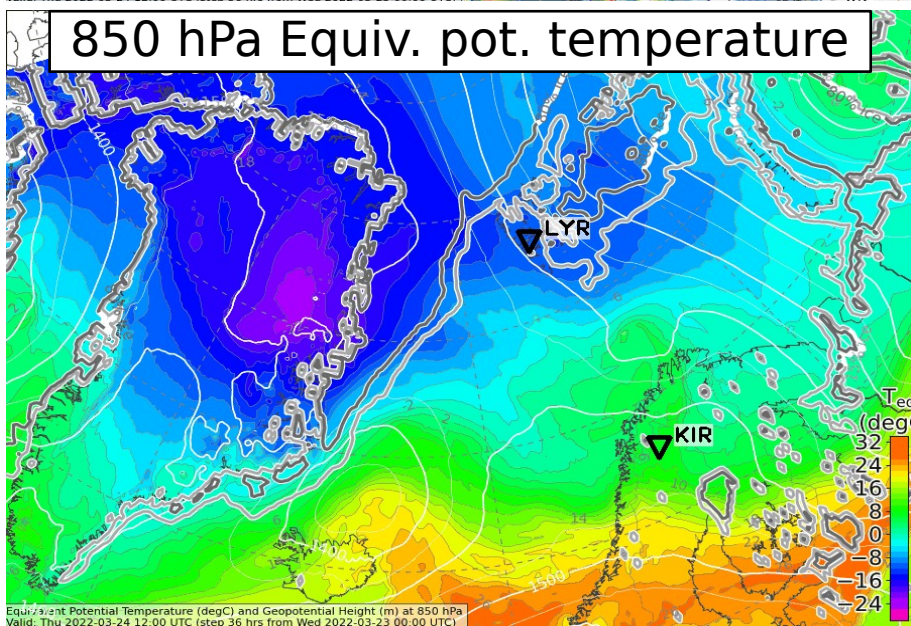
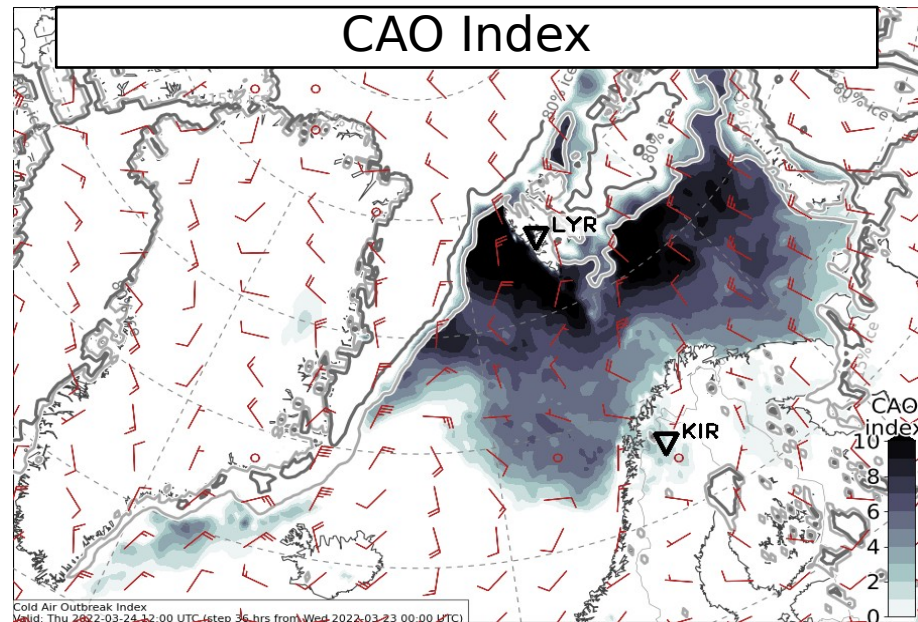
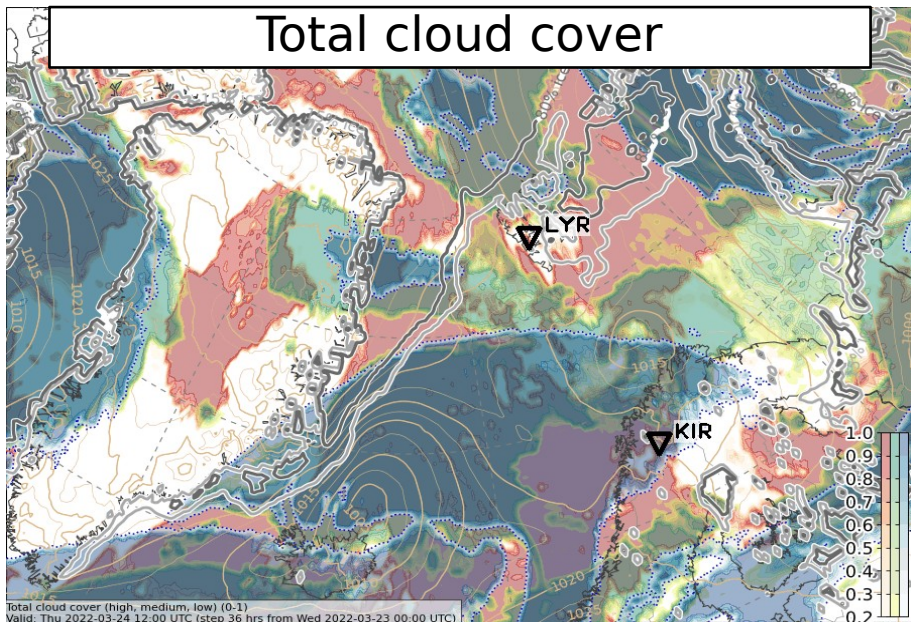


Cloud cover, CAO index, Airmasses, IVT

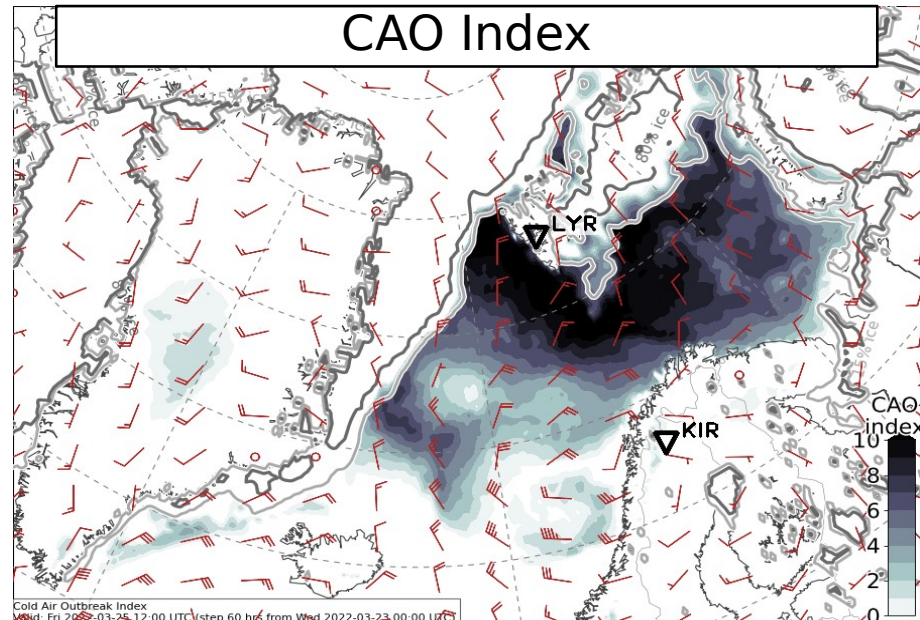
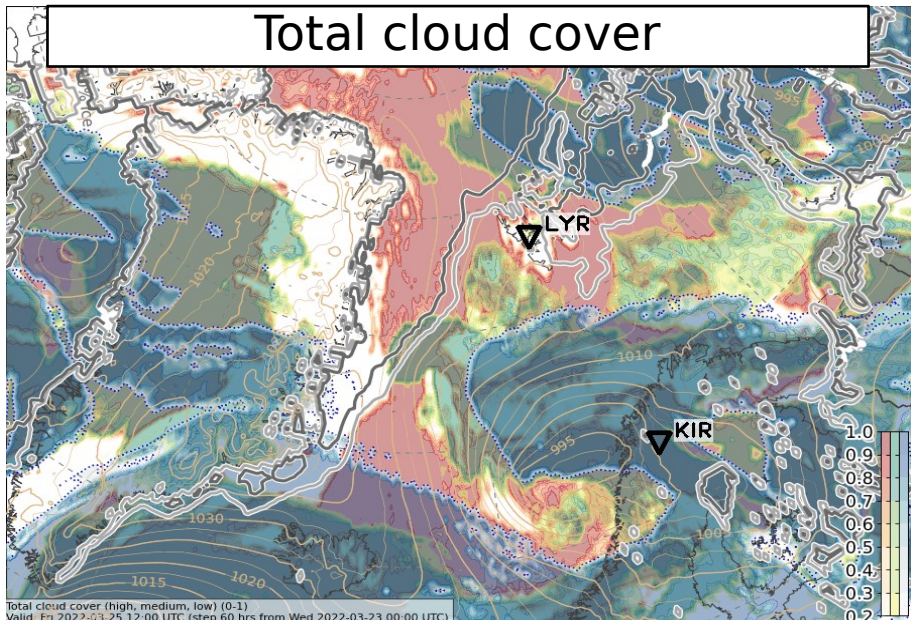
2022-03-23 00 UTC: 36 - 108h

Cloud cover & 850hPa θ_e & CAO & IVT

Thu, 2022-03-24 12 UTC (+36h)

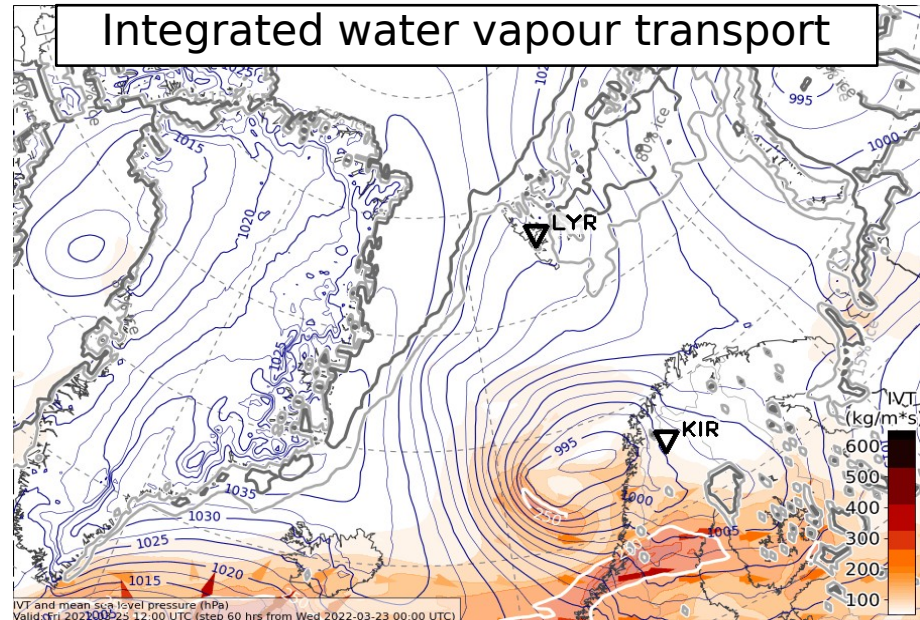


Fri, 2022-03-25 12 UTC (+60h)

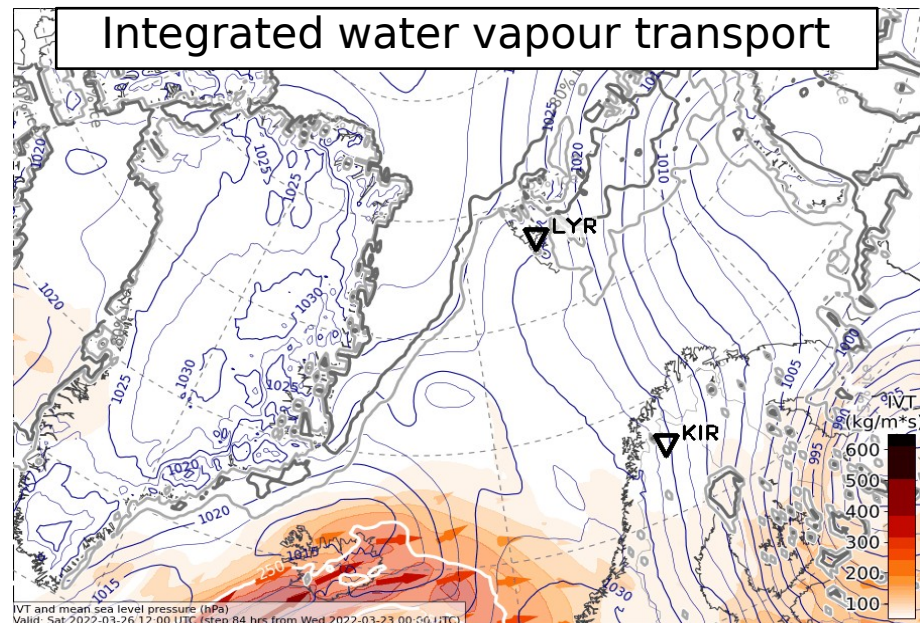
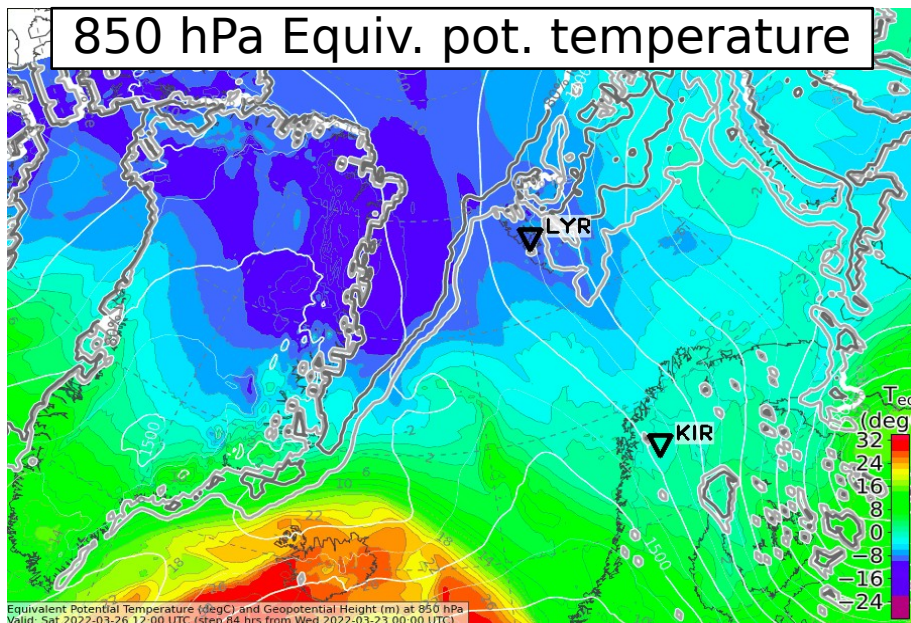
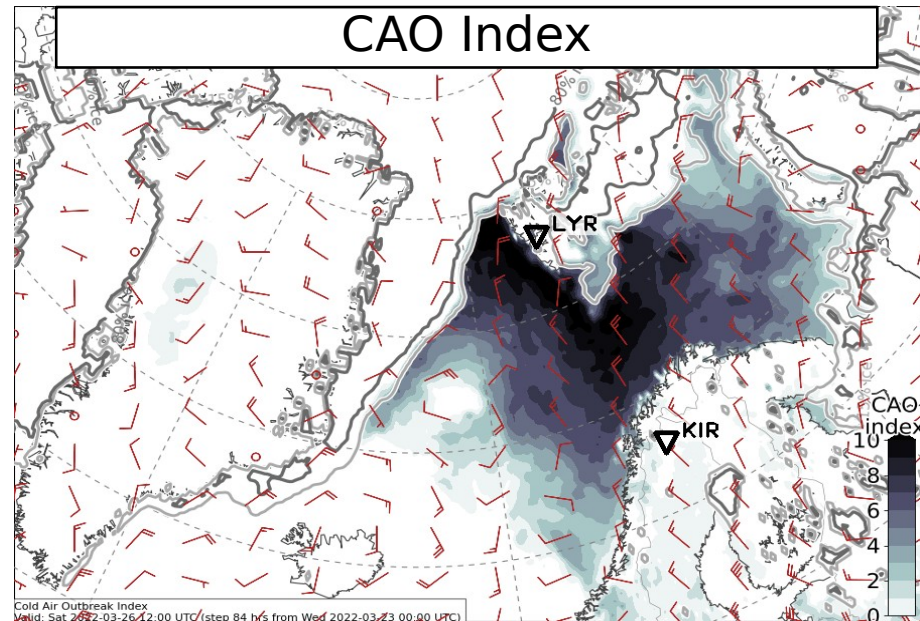
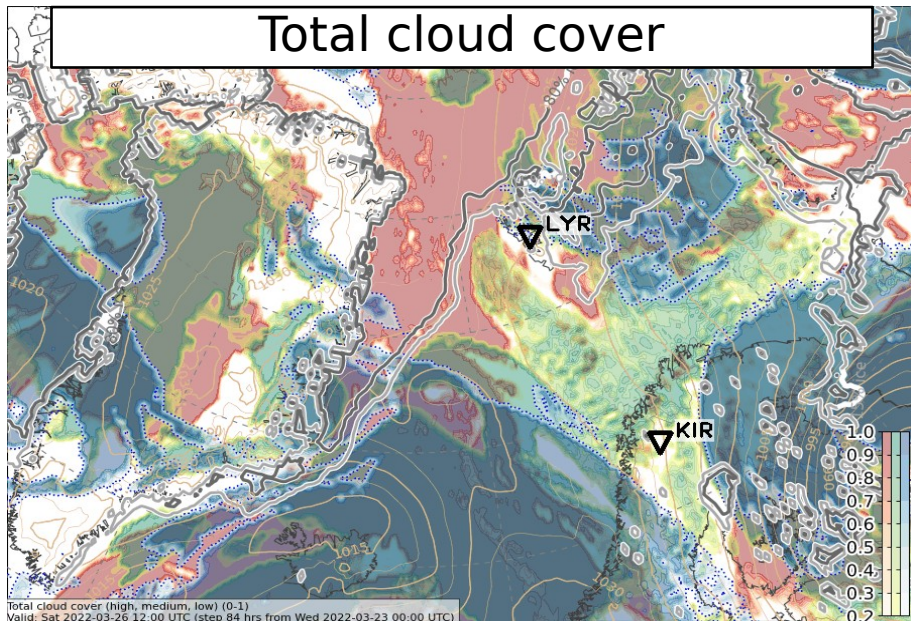


850 hPa Equiv. pot. temperature

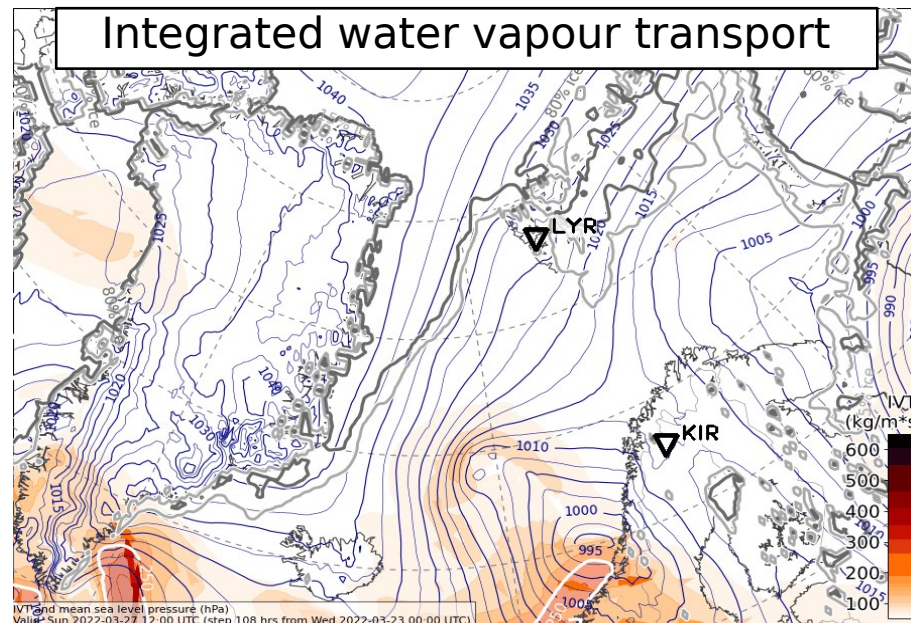
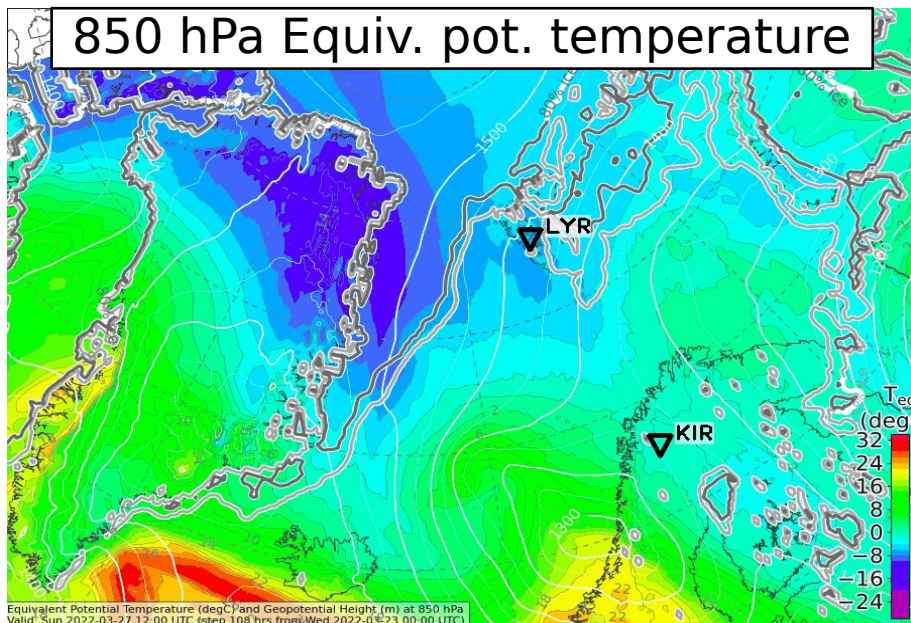
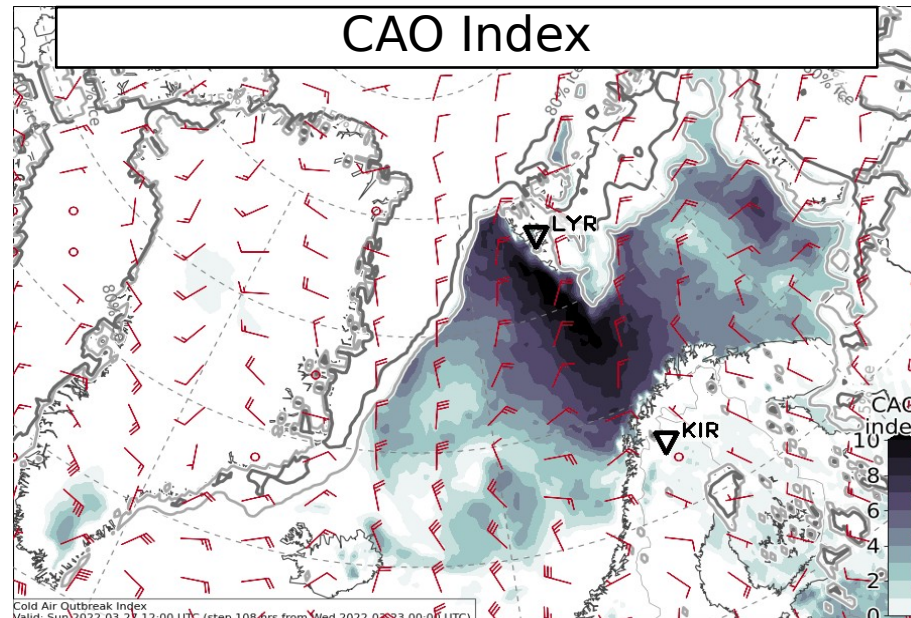
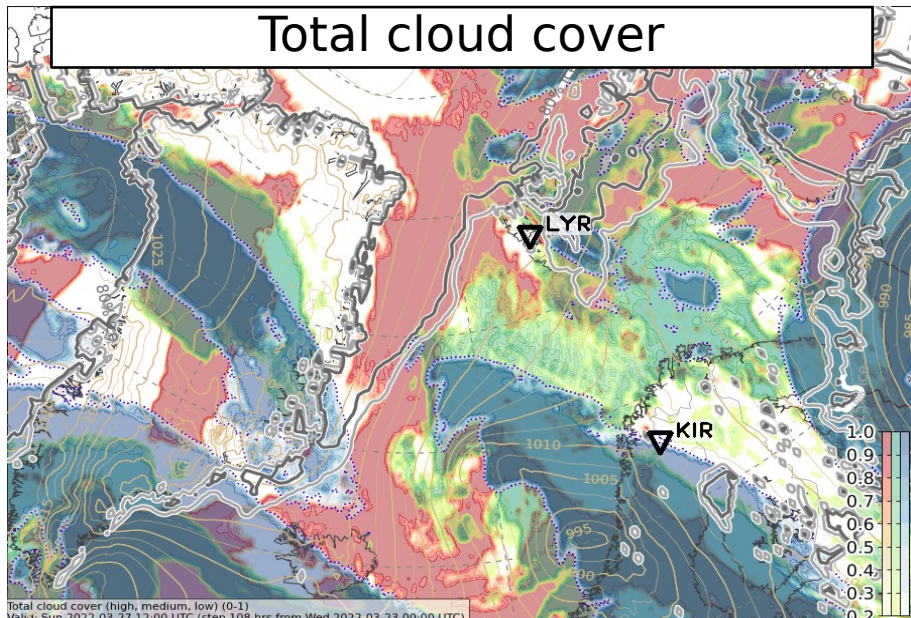
not available!



Sat, 2022-03-26 12 UTC (+84h)



Sun, 2022-03-27 12 UTC (+108h)

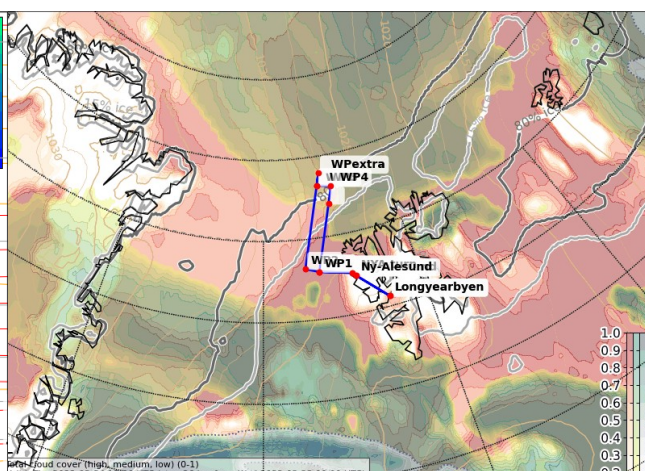
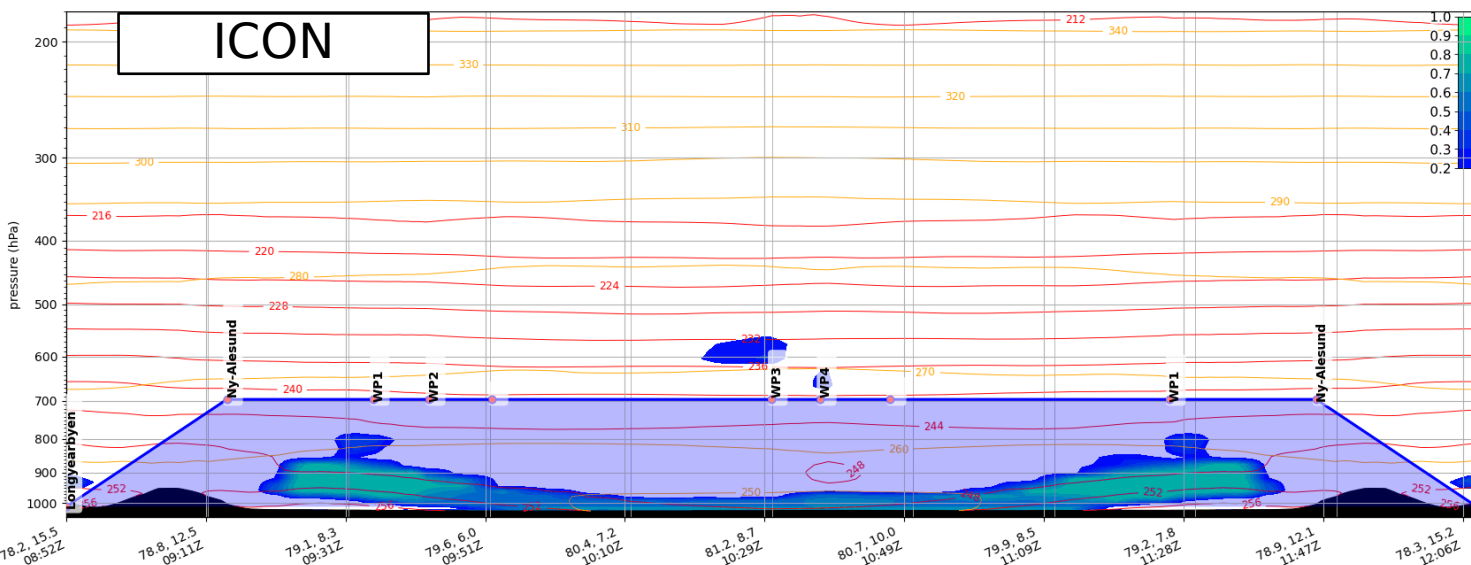
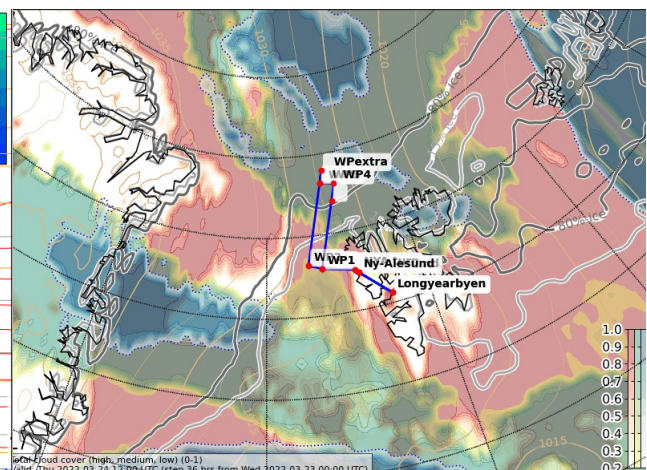
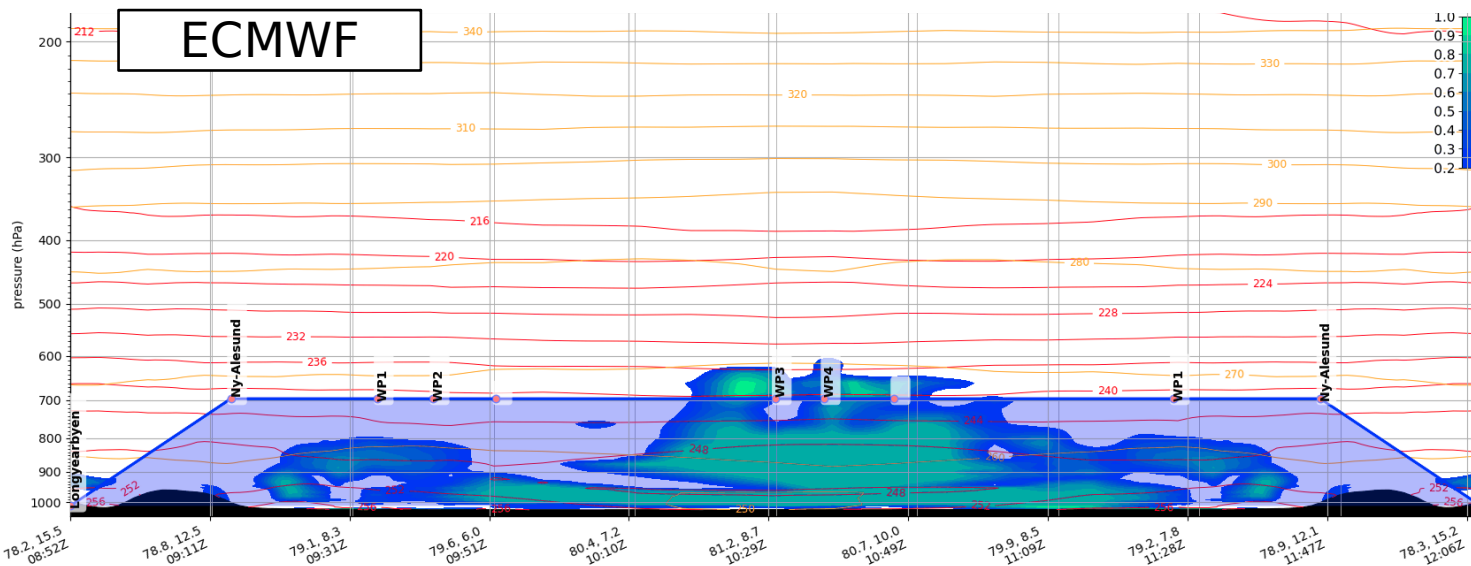


Cloud cross-sections: P5_RF04

2022-03-23 00 UTC: 36 h

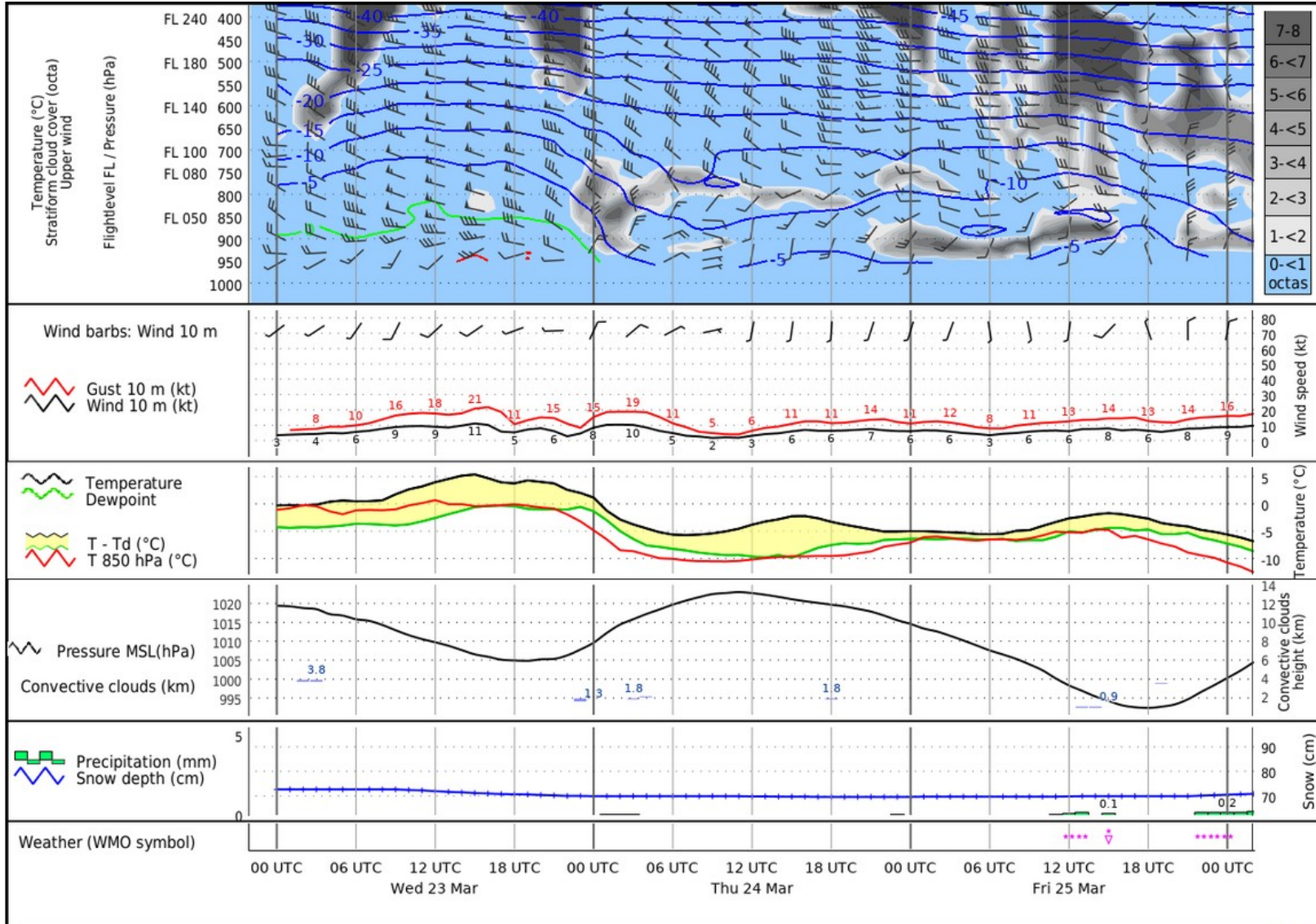
ECMWF & ICON

Thu, 2022-03-24, Clouds, 12 UTC



Airport meteograms & local weather at Svalbard

Kiruna:

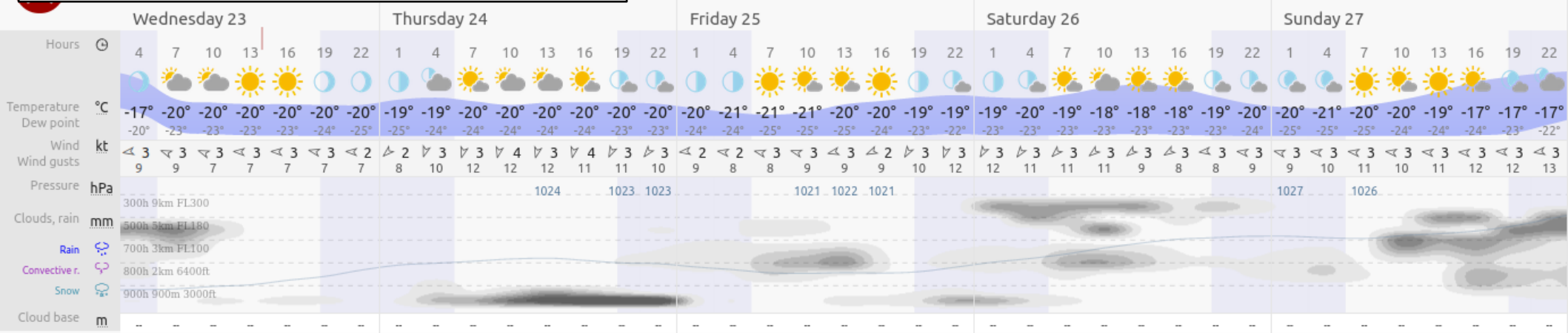


Meteorgram Kiruna (ESNQ), 460 m, LAT/LON: N 67°49' E 20°20'

ICON-EU 2022-03-23 00 UTC, model height: 460 m

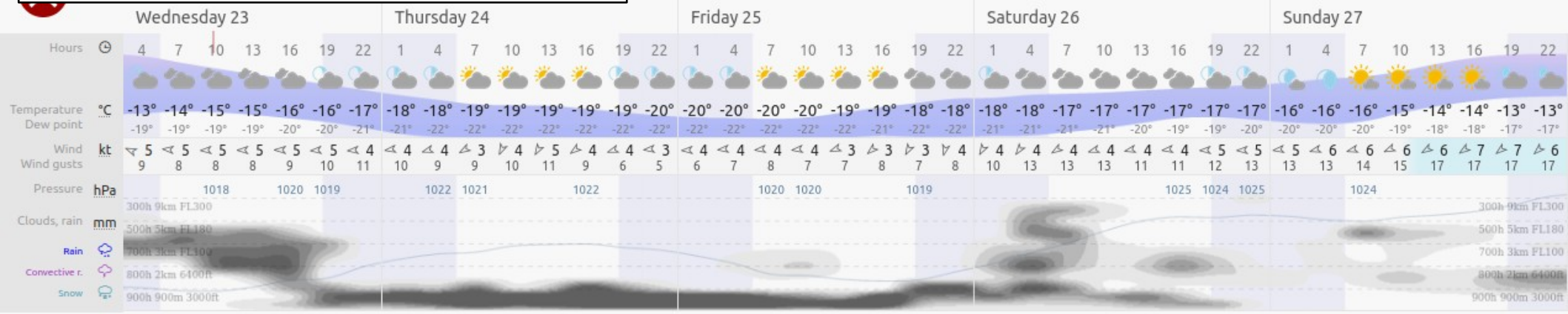
Longyearbyen:

ECWMF



1h forecast Basic Waves Wind Meteog. Airgram **ECWMF** GFS ICON METEOBLUE Compare Updated: 3h 54m ago

ICON



1h forecast Basic Waves Wind Meteog. Airgram ECMWF GFS **ICON** METEOBLUE Compare Updated: 4h ago

Latest METAR and TAF from Longyearbyen airport

Svalbard Airport. Longyear

Longyearbyen, Norway

latitude: 78-15N, longitude: 015-28E,
elevation: 2 m

Current weather observation

The report was made **30** minutes ago, at **14:20**
UTC

Wind **7** kt from the **East/Southeast**

Temperature **-16°C**

Humidity **60%**

Pressure **1019** hPa

Visibility 10 km or more

Few clouds at a height of **3000** ft

[Change units](#)

METAR: ENSB 231420Z 12007KT 9999
FEW030 M16/M22 Q1019 NOSIG RMK WIND
1400FT 10007KT

Time: 15:50 (14:50 UTC)

Forecast

*Forecast valid from 23 at 12 UTC to 24 at 12
UTC*

Wind **9** kt from the **East**

Visibility 10 km or more

Few clouds at a height of **3000** ft

TAF: ENSB 2312/2412 10009KT 9999
FEW030

Summary

Summary: Weather Briefing 2022-03-23, 17:00 LT

- **Outlook Thursday to Sunday:**
 - CAO around Svalbard with N-NE flow
 - CAO reaching further south
 - Low clouds over sea ice spreading further south
- **Thursday, 2022-03-24:**
 - Vertical cloud cross section: major differences between ICON and ECMWF
- **Friday, 2022-03-25:**
- **Saturday, 2022-03-26:**
 - Low pressure system SW of Svalbard → disturbs N flow (uncertain)
- **Sunday, 2022-03-27:**
 - N flow again