



# Flight Plan for: 04 April 2022 RF10

**POLAR 5**

Take Off: 10:05 UTC (12:05 LT)  
Duration: 04h 25min

Pilots: James Steward  
Noah Hladiuk

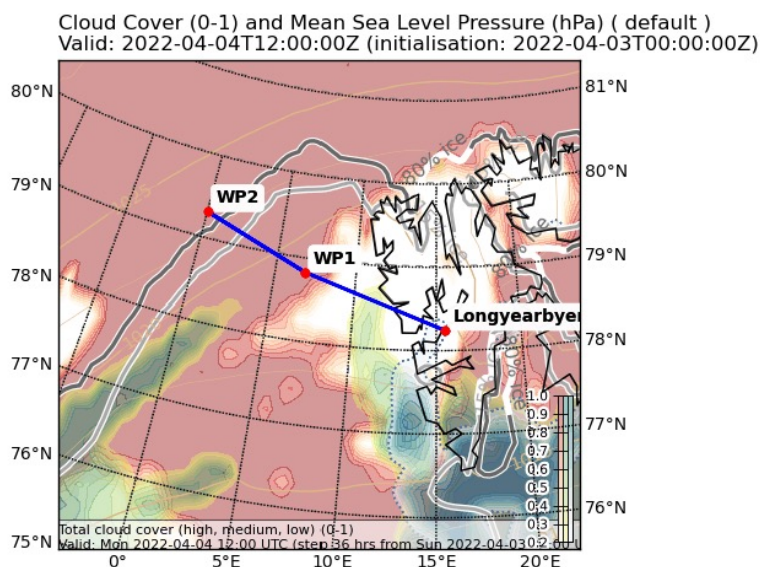
<b>Crew:</b>	Mission PI	Sabrina Schnitt
	AWI	?
	AWI	Timo Vihma
	Eagle/Hawk	Evelyn Jäkel
	MiRAC	Imke Schirmacher
	Dropsondes	Nina Maherndl

**Ground PI:** ?

## Waypoints:

Loc	Lat	Lon	FL	TAS to next	NM	Dist. Cum / nm	Duration / min	UTC
LYR	78.25	15.48	0	160	0	0	0	10:05
W1	78.83	6.83	100	120	109	109	45	10:50
W2	79.31	0.00	100	120	83	192	45(+5)	11:40
W1	78.83	6.83	100	120	83	275	45(+5)	12:30
W2	79.31	0.00	100	120	83	359	45(+5)	13:20
W1	78.83	6.83	100	160	83	442	45	14:00
LYR	78.25	15.48	0	0	109	551	45	14:45

## Overview Map:





## Detailed Map:

11 dropsondes ●

2 clear-sky

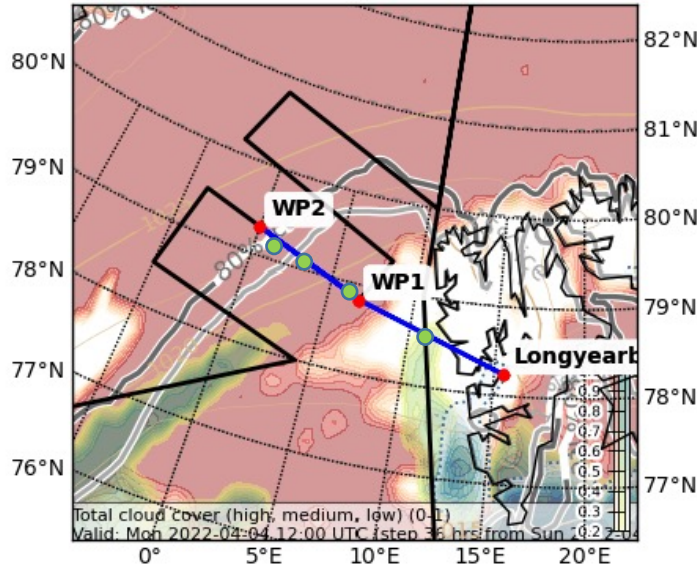
3 per leg:

- E edge cloud deck
- leg center
- ice edge

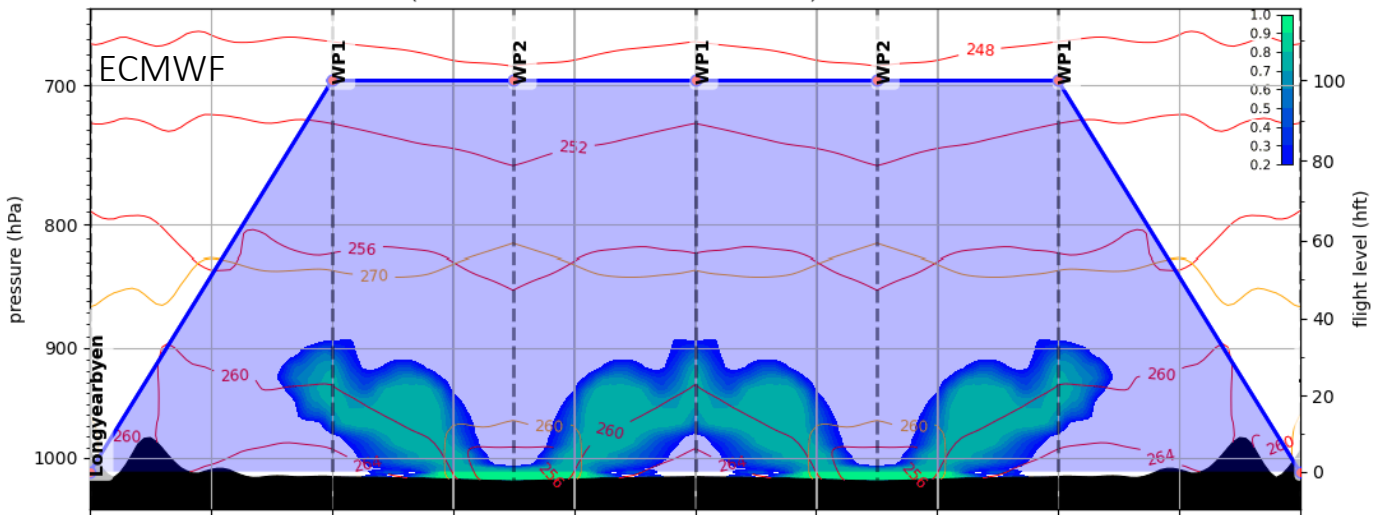
procedure turns after each WP1/2

HALO overpass: leg 4

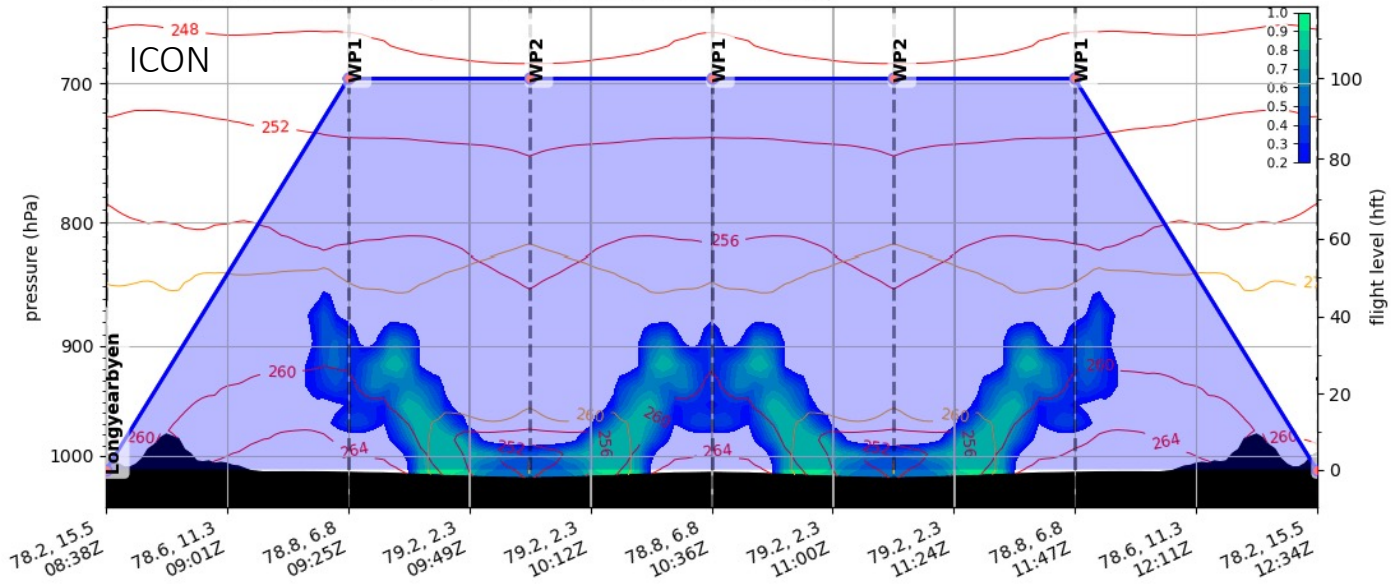
Cloud Cover (0-1) and Mean Sea Level Pressure (hPa) ( default )  
Valid: 2022-04-04T12:00:00Z (initialisation: 2022-04-03T00:00:00Z)



Cloud Cover (0-1) Vertical Section  
Valid: 2022-04-04T12:00:00Z (initialisation: 2022-04-03T00:00:00Z)



Cloud Cover (0-1) Vertical Section  
Valid: 2022-04-04T12:00:00Z (initialisation: 2022-04-03T00:00:00Z)

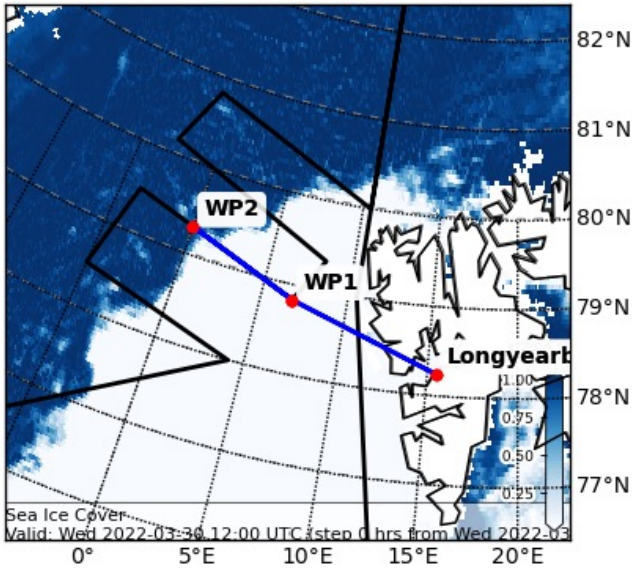




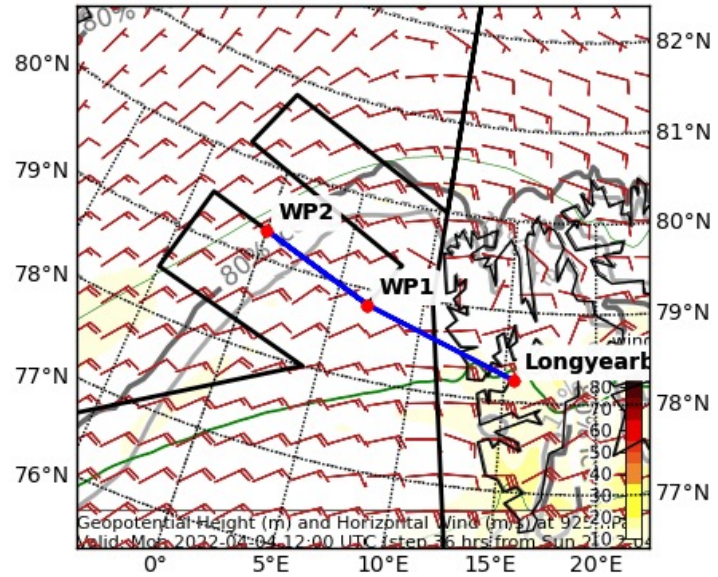


## Additional Maps:

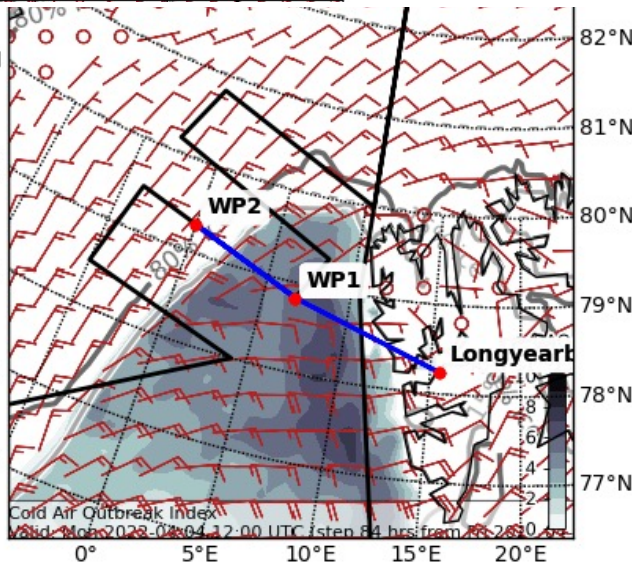
Sea Ice Cover AMSR2 (0-1) ( default )  
Valid: 2022-03-30T12:00:00Z (initialisation: 2022-03-30T12:00:00Z)



Horizontal Wind (m/s) and Geopotential Height (m) ( default ) at 925.0 (hPa)  
Valid: 2022-04-04T12:00:00Z (initialisation: 2022-04-03T00:00:00Z)



Marine Cold Air Outbreak Index and Surface Winds  
Valid: 2022-04-04T12:00:00Z (initialisation: 2022-04-01T00:00:00Z)



Precipitation, accumulated (mm water eq.). Rain-blue, snow-black  
Valid: 2022-04-04T12:00:00Z (initialisation: 2022-04-03T00:00:00Z)

