



Flight Plan for: 09 April 2022

POLAR 6

Take Off: 09.00 UTC (11:00 LT)
Duration: 05h 10 min

Pilots: James Steward
Artem Brusilovsky

Crew:

Mission PI
AWI

Christof Lüpkes
Maximilian Stöhr/Dirk Kalmbach

ALABAMA
PMS
Aerosol/HERA/CVI

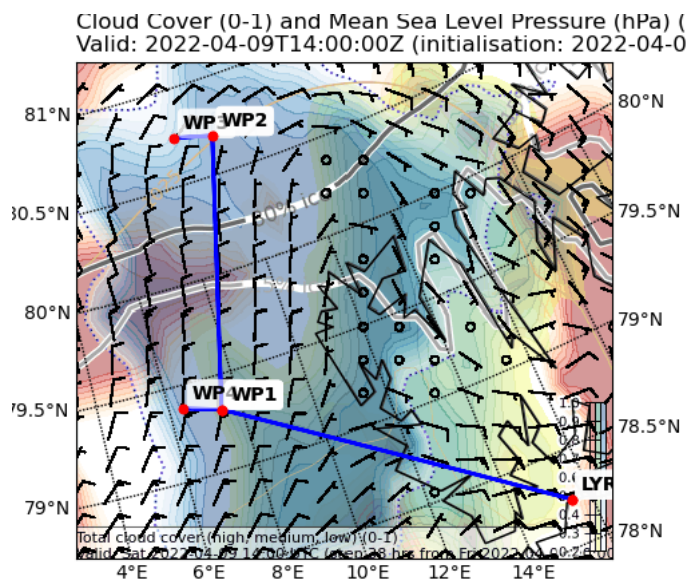
Philipp Joppe
Regis Dupuy
Jonas Schäfer

Ground PI: -

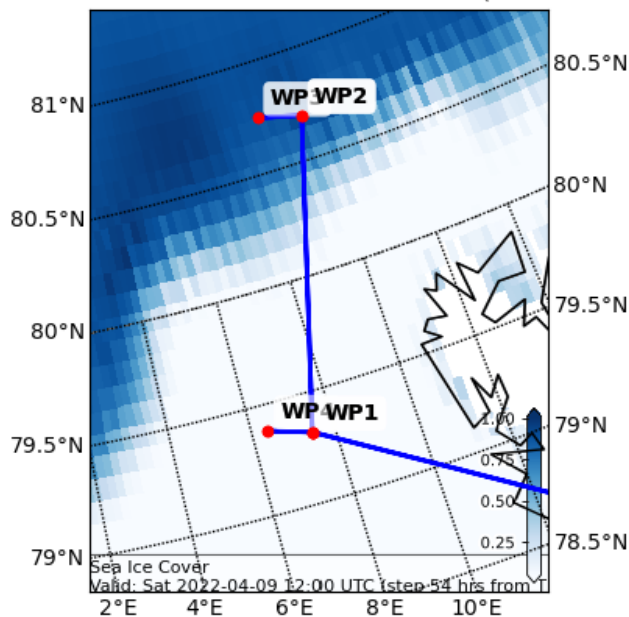
Waypoints:

Lat	Lon	Lat_dm	Lon_dm
LYR 78.25 N	15.48E	78° 14.70'N	15° 28.92'E
WP1 79.32 N	7.44E	79° 19.20'N	7° 26.40'E
WP2 80.70 N	9.65E	80° 42.00'N	9° 39.00'E
WP3 80.75 N	8.45E	80° 45.00'N	8° 27.00'E
WP4 79.38 N	6.40E	79° 22.80'N	6° 24.00'E

Overview Map:



Valid: 2022-04-09T12:00:00Z (initialisation)



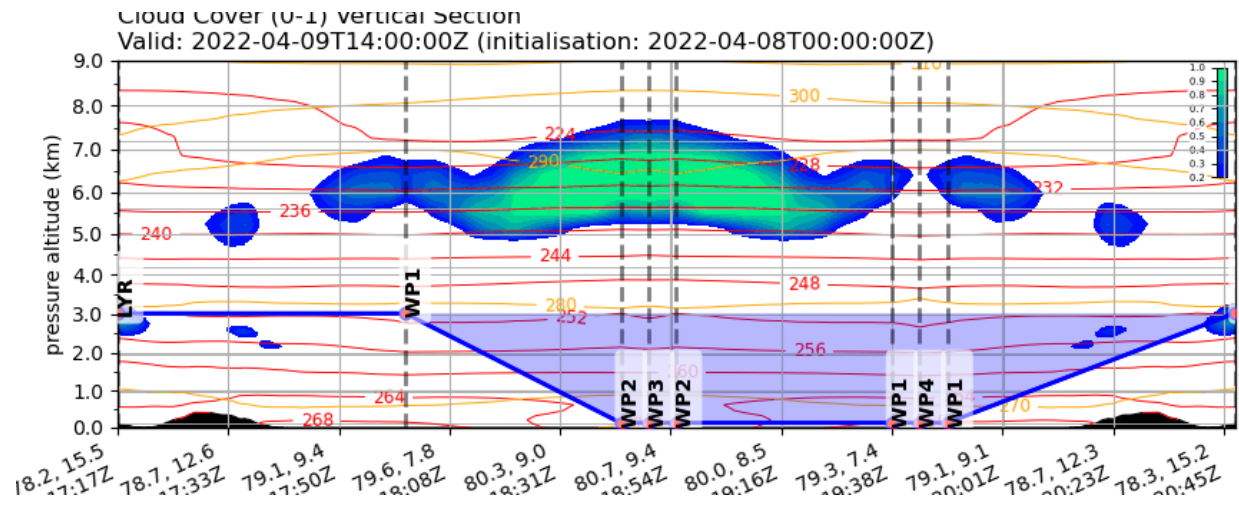
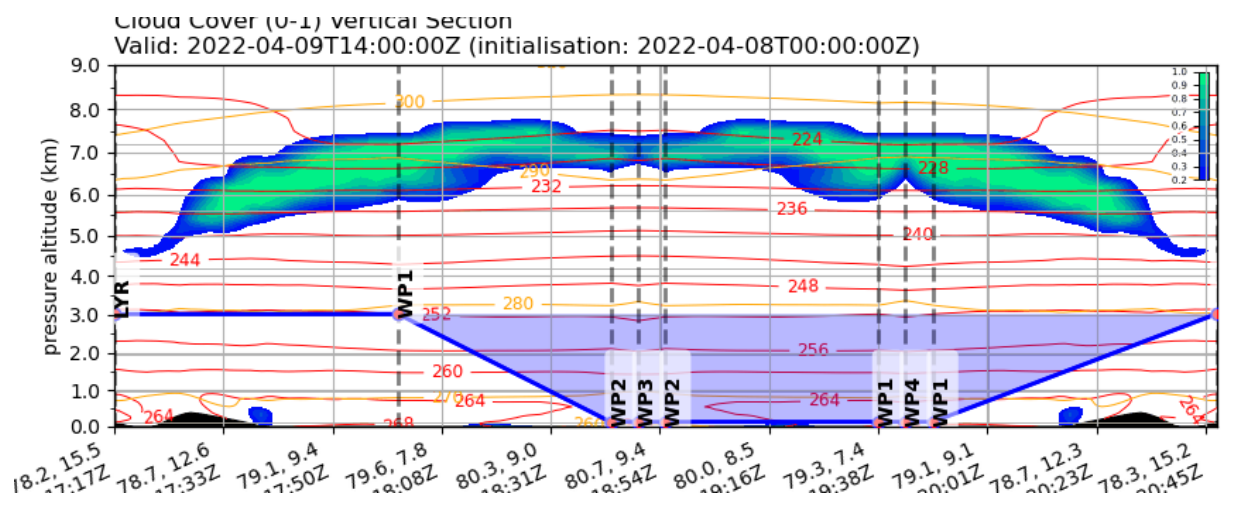


Detailed Flight Information:

LYR → WP1	10.000 ft	160 Kn (TAS)	114 Nm	57 min
WP1 → WP2	Sawteeth	120 Kn	86 Nm	43 min
WP2 → WP3 → WP2		120 Kn 6 legs (12 Nm)		55 min
WP2 → WP1	200 ft	120 Kn	86 Nm	43 min
WP1 → WP4 → WP1		120 Kn 6 legs (12 NM)		55 min
WP1 → LYR	10.000 ft	160 Kn (TAS)	114 Nm	57 min

Total Flight Time SUM: 5 hr 10 min

In sawteeth, rates of ascend and descend: 500 ft/min



Cloud Cover (0-1) and Mean Sea Level Pressure (hPa) (LOV
Valid: 2022-04-09T14:00:00Z (initialisation: 2022-04-08T01

