



Take Off: 09:35 UTC  
Duration: 04:24 Hours

Pilots: Alan Gilbertson  
Artem Brusilovskiy

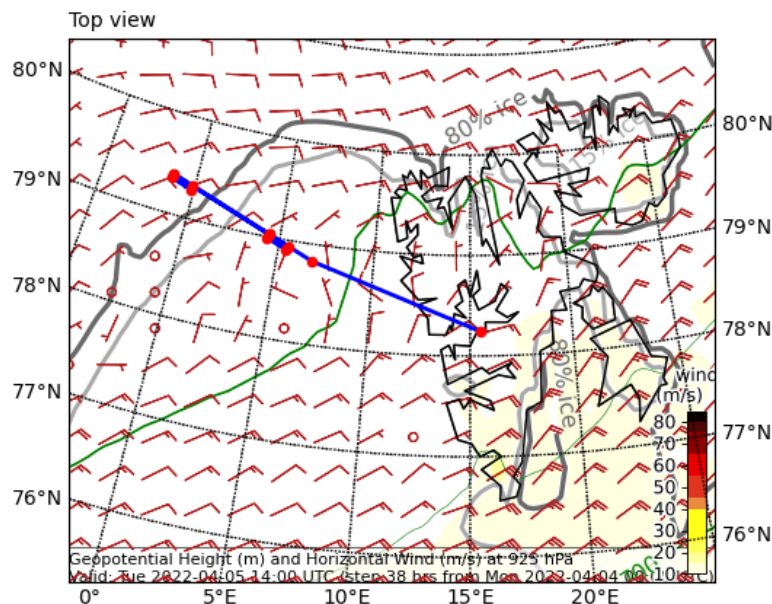
<b>Crew:</b>	Mission PI AWI ALABAMA /Trace gas PMS Aerosol/HERA/CVI Camera	Johannes Schneider / Manuel Moser Cristina Sans Coll Alexander Gerst / Johannes Schneider Alexander Gerst / Manuel Moser Sarah Grawe Jonas Sichert
--------------	--	---

**Ground PI:** Tim Sperzel

## Waypoints:

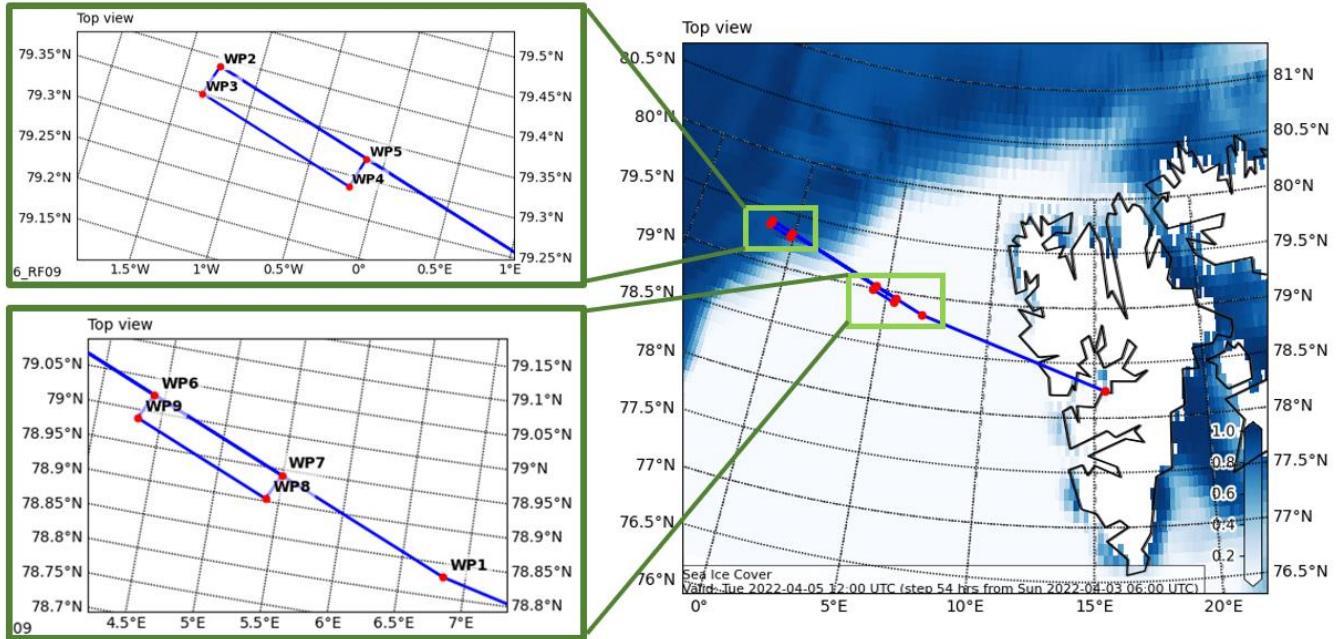
<b>WP1</b>	78.83 6.83	78° 49.800' N	006° 49.800' E
<b>WP2</b>	79.39 -1.28	79° 23.340' N	001° 16.620' W
<b>WP3</b>	79.35 -1.34	79° 21.000' N	001° 20.580' W
<b>WP4</b>	79.29 -0.19	79° 17.160' N	000° 11.580' W
<b>WP5</b>	79.33 -0.13	79° 19.560' N	000° 07.620' W
<b>WP6</b>	79.03 4.41	79° 01.500' N	004° 24.720' E
<b>WP7</b>	78.94 5.49	78° 56.520' N	005° 29.340' E
<b>WP8</b>	78.90 5.40	78° 54.240' N	005° 23.940' E
<b>WP9</b>	78.99 4.32	78° 59.220' N	004° 19.260' E

## Overview Map:





## Detailed Map:



## Flight Plan:

**LYR – W1** at cruise altitude + wing by wing with P5 @160kn; 109NM 40 min  
**W1 – W2** Staircase pattern in cloud top @120kn; 98NM 49 min

Science Track over sea ice: (1 below clouds, 3 inside clouds, 1 above clouds)

**W2>W3>W4>W5>W2>W3>W4>W5>W2>W3>W4>W5**  
 @120kn; 13NM each 42min

**W5 – W6** low level leg @120kn; 54NM 27min

Science track over ocean:(1 below clouds, 3 inside clouds, 2 above clouds)

**W6>W7>W8>W9>W6>W7>W8>W9>W6>W7>W8>W9>W8**  
 @120kn; 13NM each 60min

**W8 – LYR** FL140 (5min); FL120 (5min); FL80 (5min); cruise @160kn; 126NM 45min

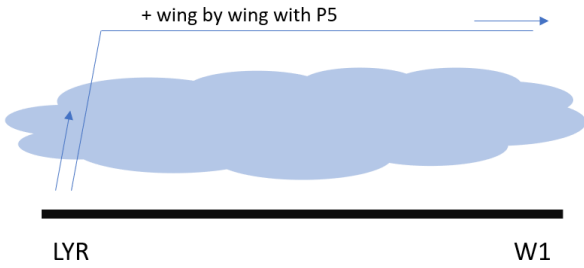
## Total:

## 4 hr 24 min



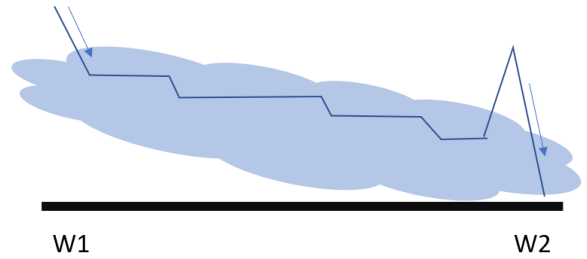
## Additional Maps:

LYR → W1 (@160kn; 109NM; 40min)



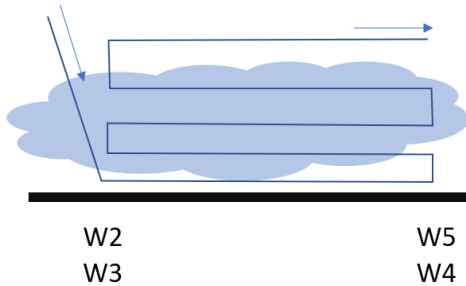
W1 → W2 (@120kn; 98NM; 49min)

Altitudes: inside cloud top



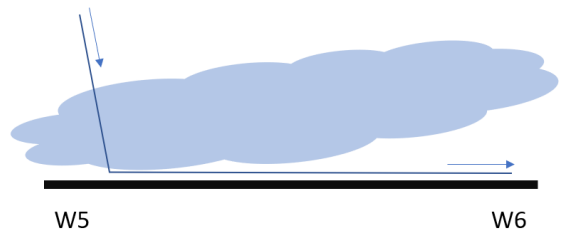
W1/W3 → W5/W4 (@120kn; 13NM/6min each leg; 42min)

Altitudes: 200ft, 600ft, 1000ft, 1400ft, 2000ft(above cloud)



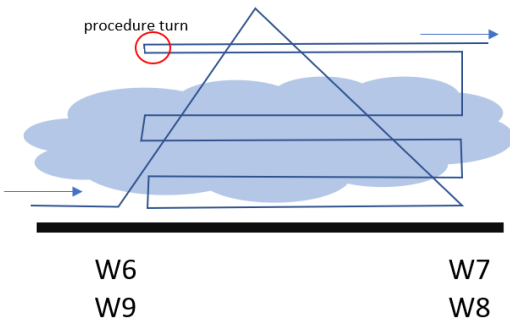
W5 → W6 (@120kn; 54NM; 27min)

Altitude: 200ft



W6/W9 → W7/W8 (@120kn; 13NM/6min each leg; 60min)

Altitudes: 2200ft(below cloud), 3250ft, 3500ft, 3750ft, 4100ft (above cloud)



W8 → LYR (@160kn; 126NM; 45min)

Altitudes: 14000ft, 12000ft, 8000ft

