



Flight Plan for: 05 April 2022

POLAR 5

Take Off: 09:30 UTC (11:30 LT)
Duration: 04h 25min

Pilots: James Steward
Noah Hladiak

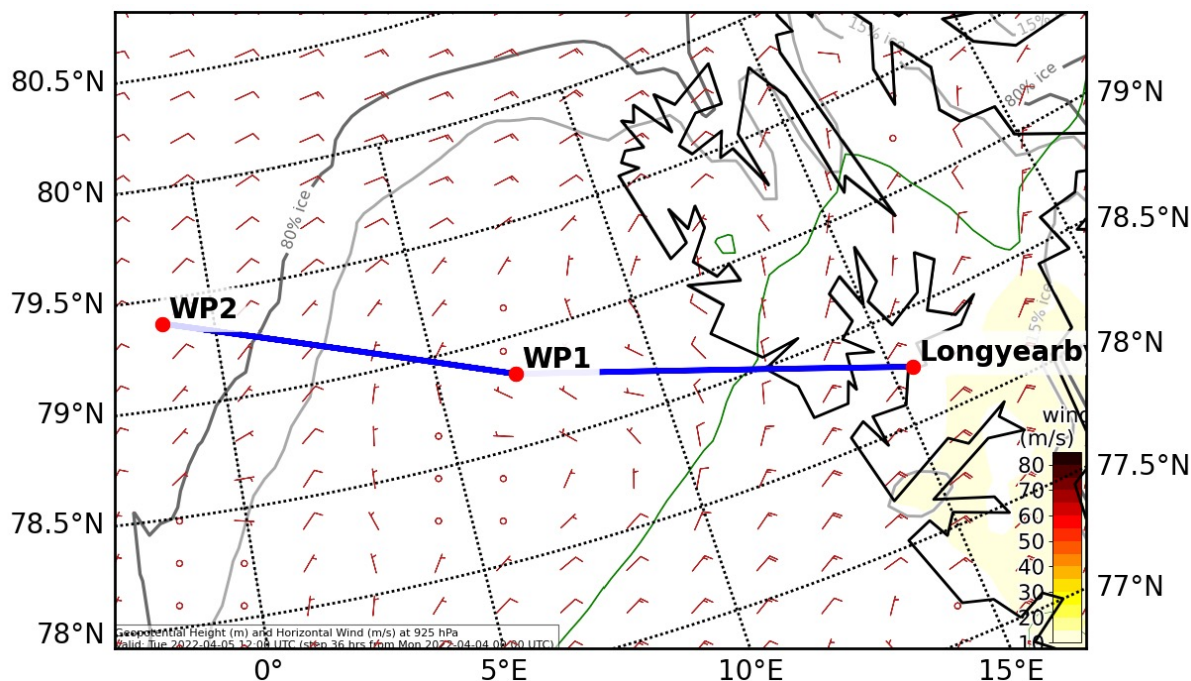
Crew:	Mission PI	Marcus Klingebiel
	AWI	Dennis Ludwig
	AWI	Dirk Kalmbach
	Eagle/Hawk	Hanno Müller
	MiRAC	Imke Schirmacher
	Dropsondes	Nils Risse

Ground PI: Tim Sperzel

Waypoints:

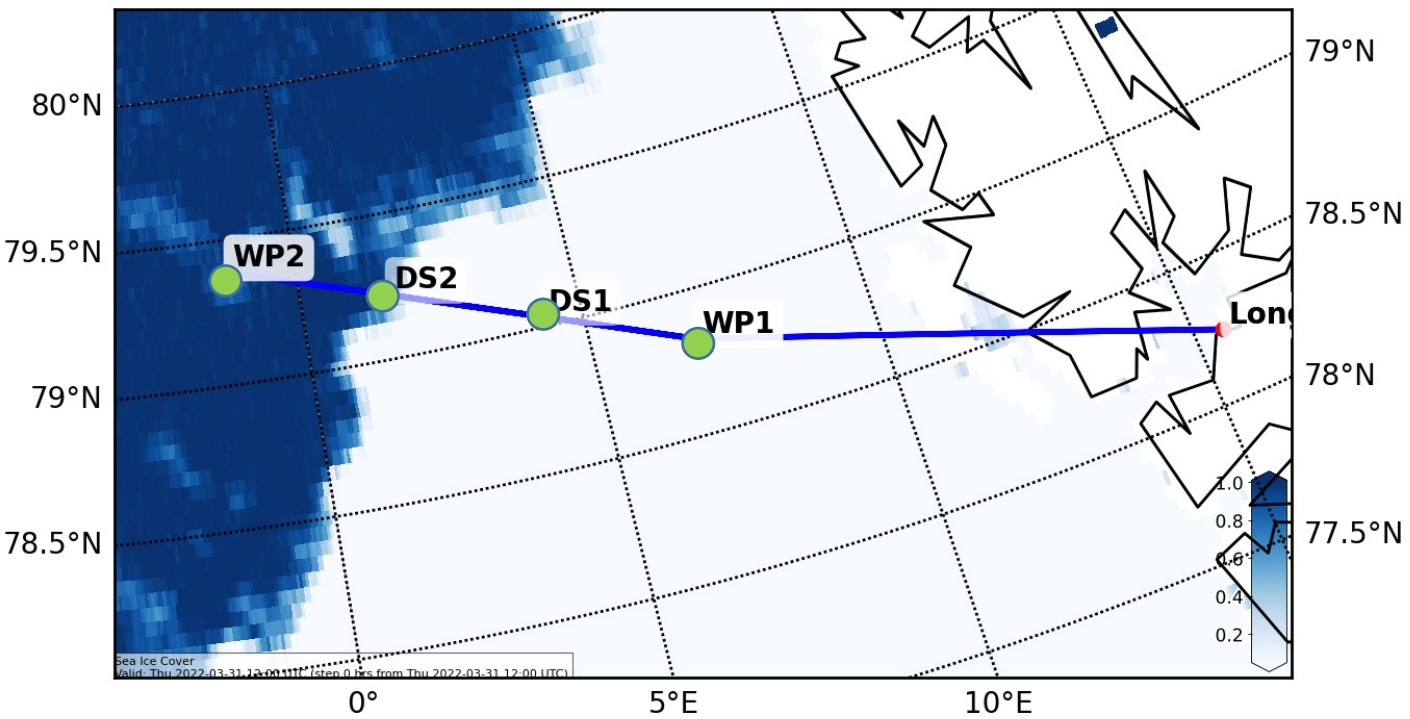
	Lat (+90)	Lon (+180)	FL	Speed (kn)	dms lat	dms lon	Dist. (nm)	Leg. time	Cum. dist. (nm)	Cum. time	UTC	Comment
LYR	78,245	15,482	0	0	78° 14.700' N	015° 28.920' E	0	00:00:00	0	0:00:00	09:30	
WP1	78,83	6,83	100	160	78° 49.800' N	006° 49.800' E	109	00:41:01	109	0:41:01	10:11	Wing by wing
WP2	79,389	-1,277	100	140	79° 23.340' N	001° 16.620' W	98	00:47:05	207	1:28:06	10:58	
WP1	78,83	6,83	100	140	78° 49.800' N	006° 49.800' E	98	00:47:05	305	2:15:11	11:45	
WP2	79,389	-1,277	100	140	79° 23.340' N	001° 16.620' W	98	00:47:05	403	3:02:16	12:32	Profile over ice
WP1	78,83	6,83	100	140	78° 49.800' N	006° 49.800' E	98	00:42:05	501	3:44:21	13:14	
LYR	78,245	15,482	0	160	78° 14.700' N	015° 28.920' E	109	00:41:01	610	4:25:22	13:55	

Overview Map:





Detailed Map:



Dropsonde locations:

	Lat (+90)	Lon (+180)
WP1	78,83	6,83
DS1	79,04	4,28
DS2	79,22	1,6
WP2	79,389	-1,277

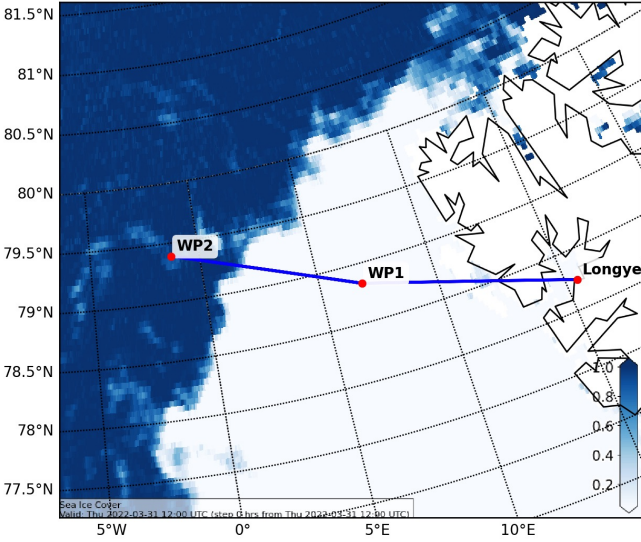
● Dropsonde

13 Sondes in total

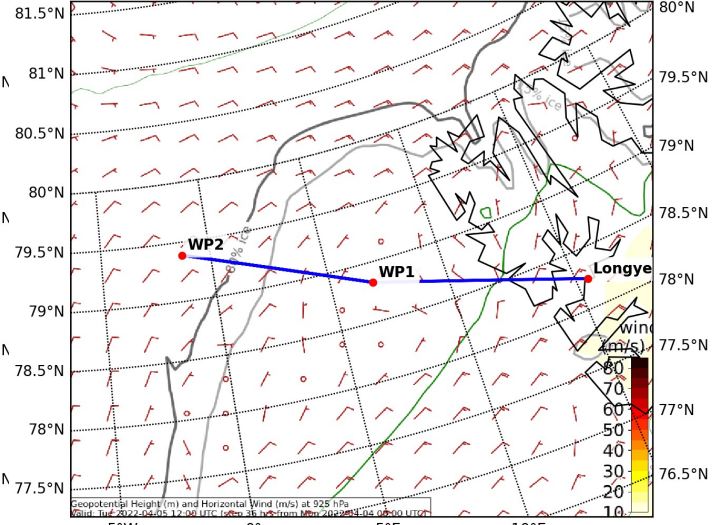


Additional Maps:

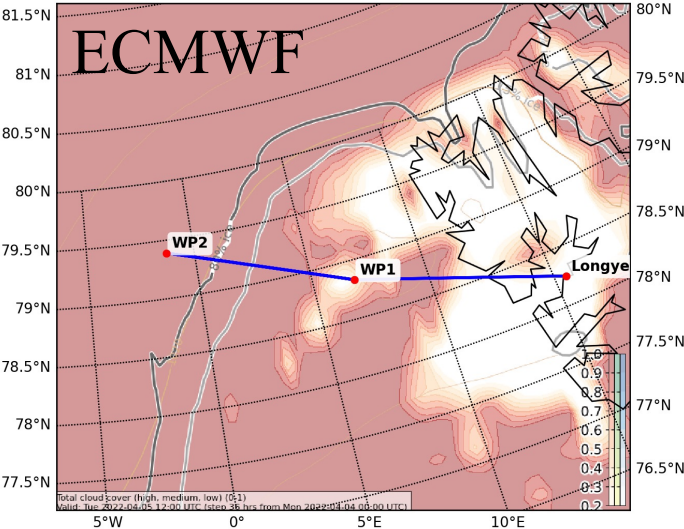
Sea Ice Cover AMSR2 (0-1) (default)
Valid: 2022-03-31T12:00:00Z (initialisation: 2022-03-31T12:00:00Z)



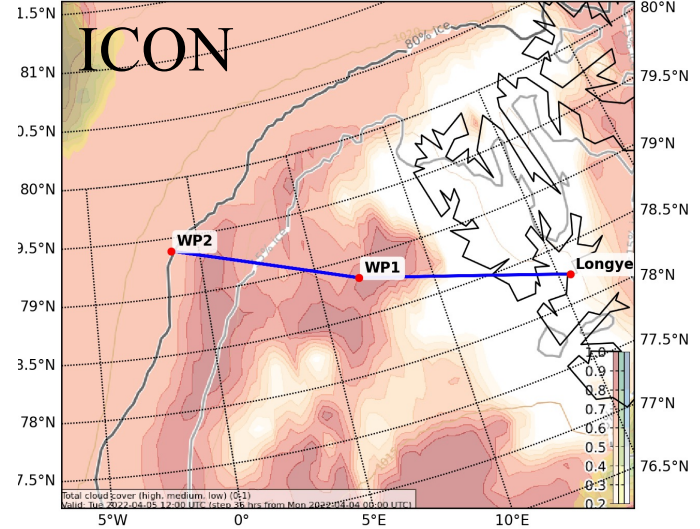
Horizontal Wind (m/s) and Geopotential Height (m) (default) at 925.0 (hPa)
Valid: 2022-04-05T12:00:00Z (initialisation: 2022-04-04T00:00:00Z)



Cloud Cover (0-1) and Mean Sea Level Pressure (hPa) (TOT)
Valid: 2022-04-05T12:00:00Z (initialisation: 2022-04-04T00:00:00Z)



Cloud Cover (0-1) and Mean Sea Level Pressure (hPa) (TOT)
Valid: 2022-04-05T12:00:00Z (initialisation: 2022-04-04T00:00:00Z)



Cloud Cover (0-1) Vertical Section
Valid: 2022-04-05T12:00:00Z (initialisation: 2022-04-04T00:00:00Z)

