



Flight Plan for: 24 March 2022

**POLAR 6**

Take Off: 11:00 UTC  
Duration: 5:14 Hours

Pilots: Alan Gilbertson  
Artem Brusilovskiy

**Crew:**

Mission PI	Stephan Borrmann
AWI	?
AWI	?
CVI/ Aerosol/HERA	Bruno Wetzel
ALABAMA /Trace gas	Oliver Eppers
PMS	Johannes Lucke

**Waypoints:**

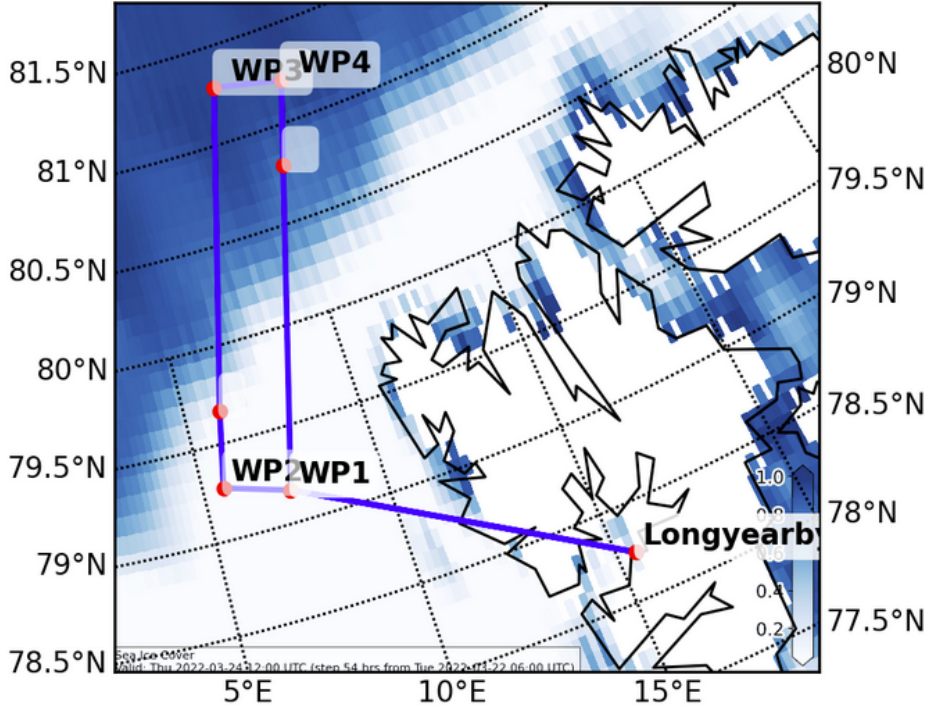
WP1	79°10.3' N	007°22.9' E	WP1	79.171	7.381 0
WP2	79°16.5' N	005°34.8' E	WP2	79.274	5.581 0
WP3	81°17.4' N	008°44.4' E	WP3	81.289	8.740 0
WP4	81°12.9' N	010°59.7' E	WP4	81.214	10.995 0



## Overview map:

Sea Ice Cover Forecast (0-1) ( default )

Valid: 2022-03-24T12:00:00Z (initialisation: 2022-03-22T06:00:00Z)



## Flight Plan:

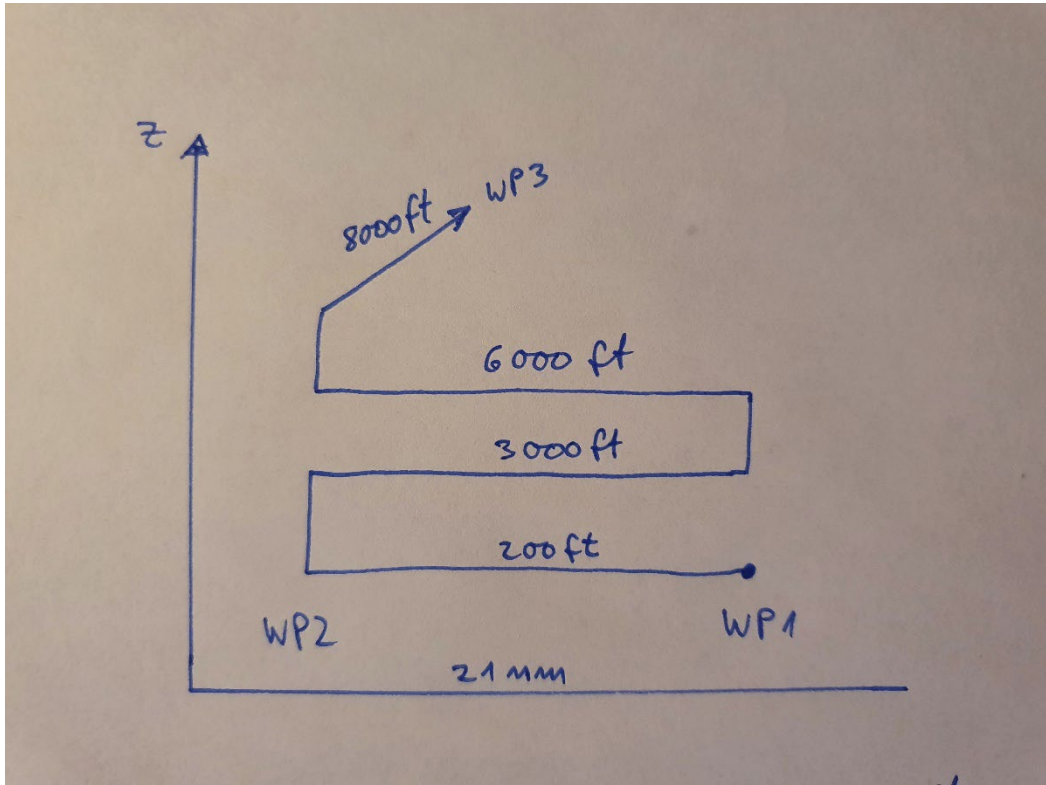
<b>LYR – WP1</b>	at cruise altitude plus profile descent	<b>110 NM @120kn</b>	<b>55 min</b>
<b>WP1 – WP2</b>	stepladder (700ft/min)	<b>21(x3) NM @120kn</b>	<b>36 min</b>
<b>WP2 – WP3</b>	staircase (200; ...12kft)	<b>125 NM @ 120kn</b>	<b>63 min</b>
<b>WP3 – WP4</b>	stepladder (700ft/min)	<b>21*(3NM) @ 120kn</b>	<b>41 min</b>
<b>WP4 – WP1</b>	staircase (200ft,..., 8000ft)	<b>128 NM @120kn</b>	<b>64 min</b>
<b>WP1 – LYR</b>	“trace gas hill” (up to 12 kft)	<b>110 NM @ 120kn</b>	<b>55 min</b>

### Total:

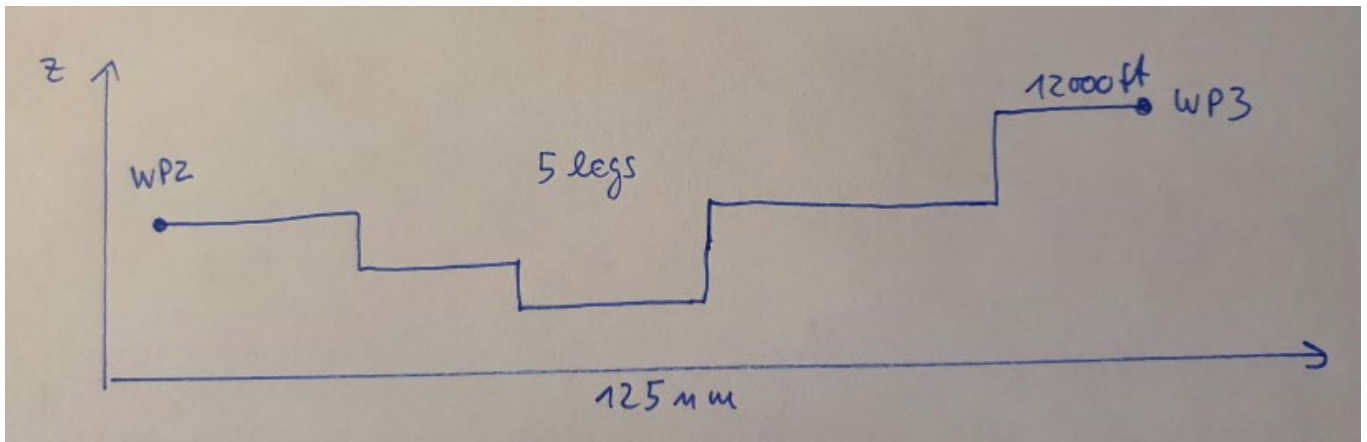
### 5 hr 14 min

# Details of the profiles

TO Lyr 10:00 UTC. LYR to WP1 at cruising altitude, descent to WP1 as profile for icing check.

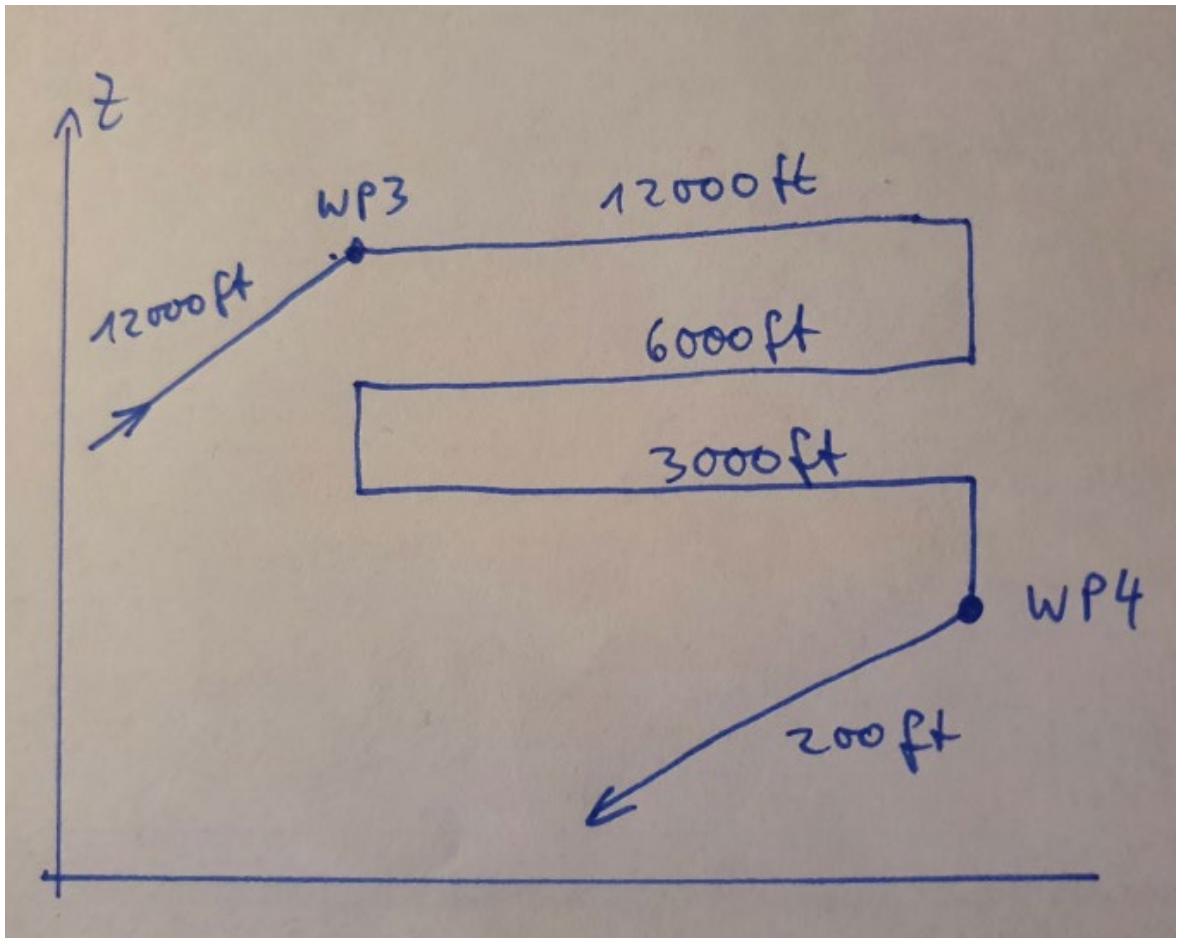


Between WP1 and WP2 ladder with three 7' steps plus 5' each for procedure turn.

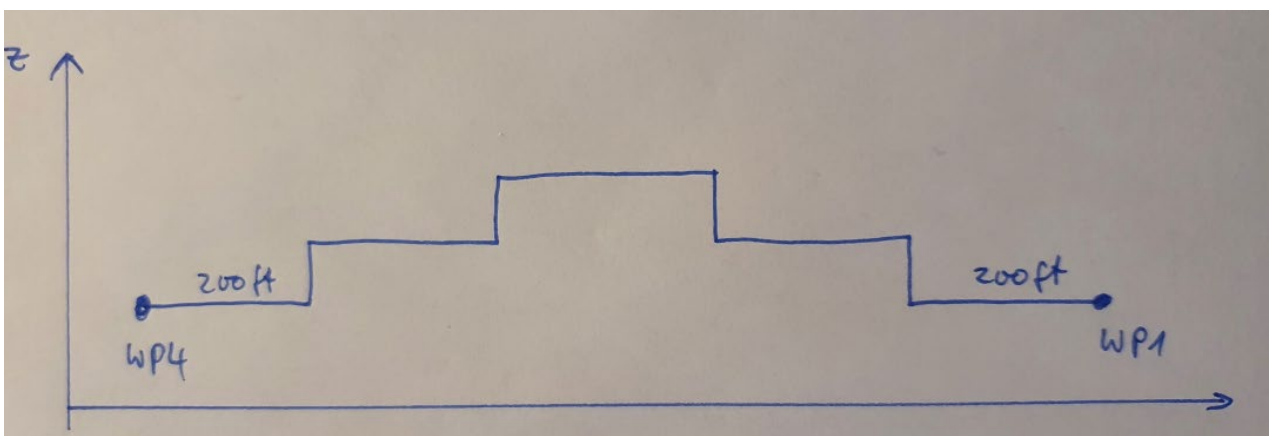


Between W2 and WP3 staircase with five steps .

Between WP3 and WP4 ladder with three 7' steps plus 5' each procedure turn. When arriving at WP4, 200 ft is meeting time with Polar 6.



Between WP4 and WP1 staircase with five steps



Between WP1 and LYR trace gas profile up to 12 000 ft.

