



# Flight Plan: Monday, 21 March

# HALO

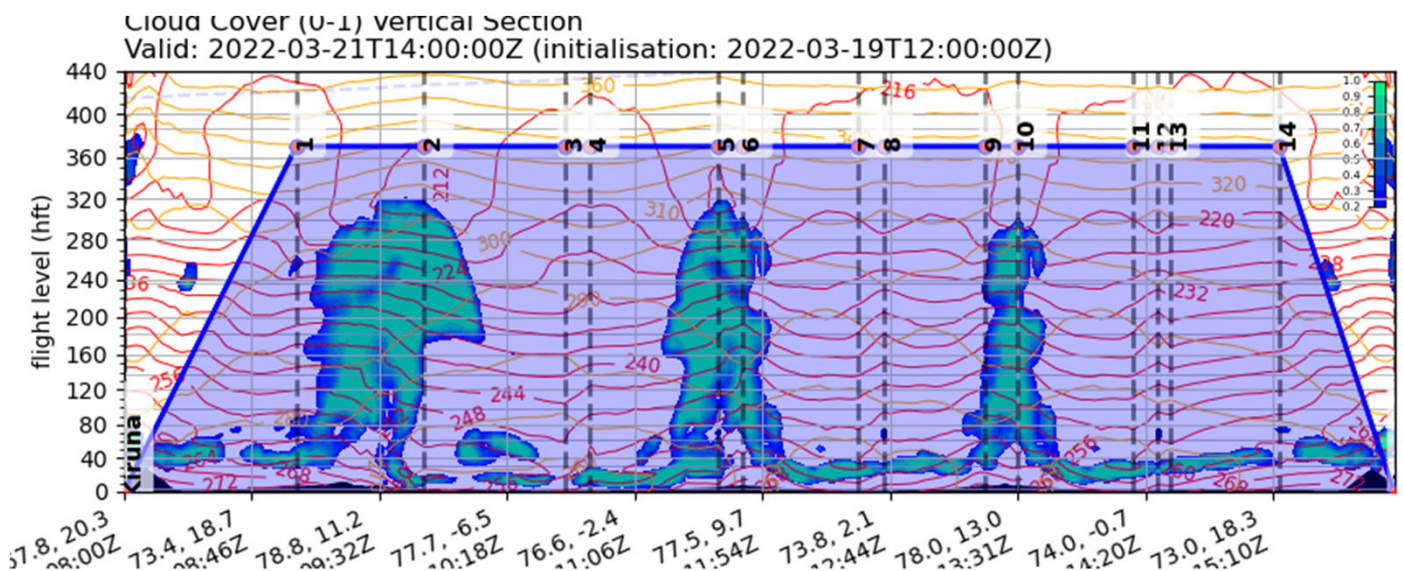
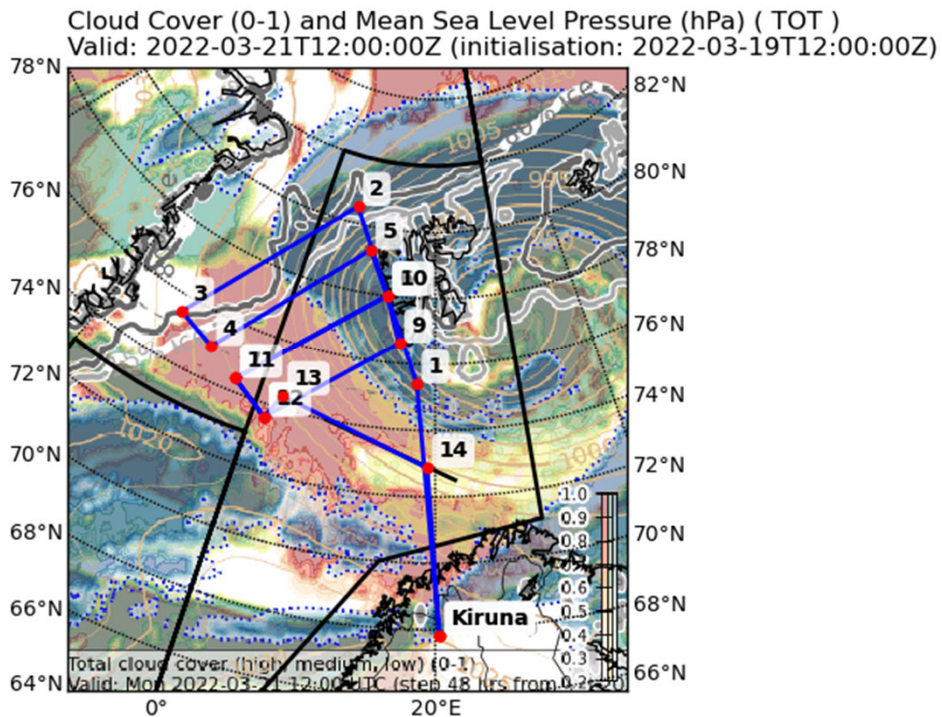
Take Off: 08:00 UTC  
 Duration: 7 Hours, 52 min  
 Plus curves

Pilots: Marc Puskeiler  
 Micha Grossrubatscher  
 Technician: Thomas Leder

## Crew:

Mission PI	Susanne Crewell
WALES	Georgios Dekoutsidis
HAMP	Andreas Walbröl
SMART/VELOX	Johnnes Röttenbacher
specMACS	Veronika Pörtge
Drosondes	Marlen Brückner
Camera	Melanie Lauer
Ground PI	Andre Ehrlich

## Maps:





## Coordinates

Index	Location	Lat (+-90)	Lon (+-180)	Flightlevel
0	Kiruna	67.821	20.336	0.000
1		75.401	17.800	370.000
2		80.500	5.800	370.000
3		75.500	-12.050	370.000
4		75.000	-7.000	370.000
5		79.300	9.500	370.000
6		78.000	13.000	370.000
7		74.400	-3.000	370.000
8		73.600	1.400	370.000
9		76.600	15.300	370.000
10		78.000	13.000	370.000
11		74.400	-3.000	370.000
12		73.600	1.400	370.000
13		74.373	2.647	370.000
14		72.865	19.202	370.000
15	Kiruna	67.821	20.336	0.000

## Drop sondes:

D1: 72.5 N, 19 E  
D2 74.1 N, 18 E  
D3: 80.3 N, 6.6 E  
D4: 80 N, 1 E  
D5: 78.2 N, 3E  
D6: 77 N, 6E D11  
D7: 75.7 N, 1.5 E D12  
D8: 73.7 N, 2 E D13  
D9: 75.3 N, 8.1 E  
D10 76.1 N, 12.4 E  
D14: 72.5 N, 19 E

