



# Flight Plan for: 22 March 2022

**POLAR 6**

Take Off: 10:00 UTC (11:00 LT)  
Duration: 4:45 Hours

Pilots: Alan Gilbertson  
Artem Brusilovskiy

## Crew:

Mission PI

AWI

AWI

CVI/ Aerosol/HERA

ALABAMA /Trace gas

PMS

Stephan Borrmann

Martin Gehrman

Dennis Ludwig

Sarah Grawe

Hans-Christian Clemen

Guillaume Mioche

## Waypoints:

**WP1** 79.02 5.54 79° 1.200' N 5° 32.220' E

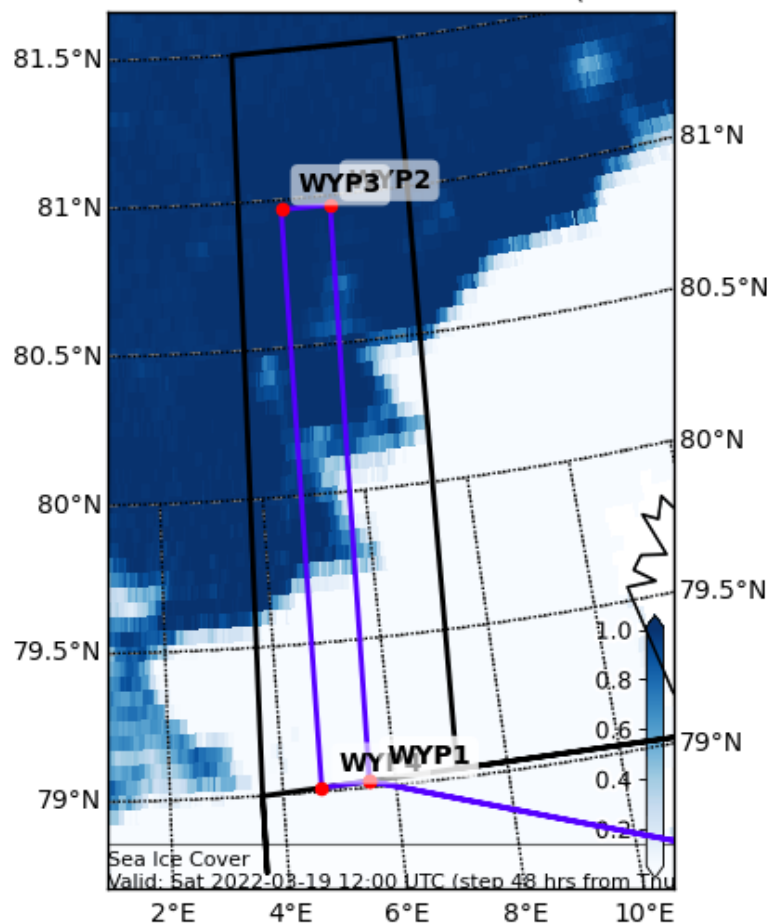
**WP2** 80.97 5.89 80° 58.080' N 5° 53.400' E

**WP3** 80.97 4.83 80° 58.080' N 4° 49.920' E

**WP4** 79.01 4.68 79° 0.780' N 4° 41.040' E

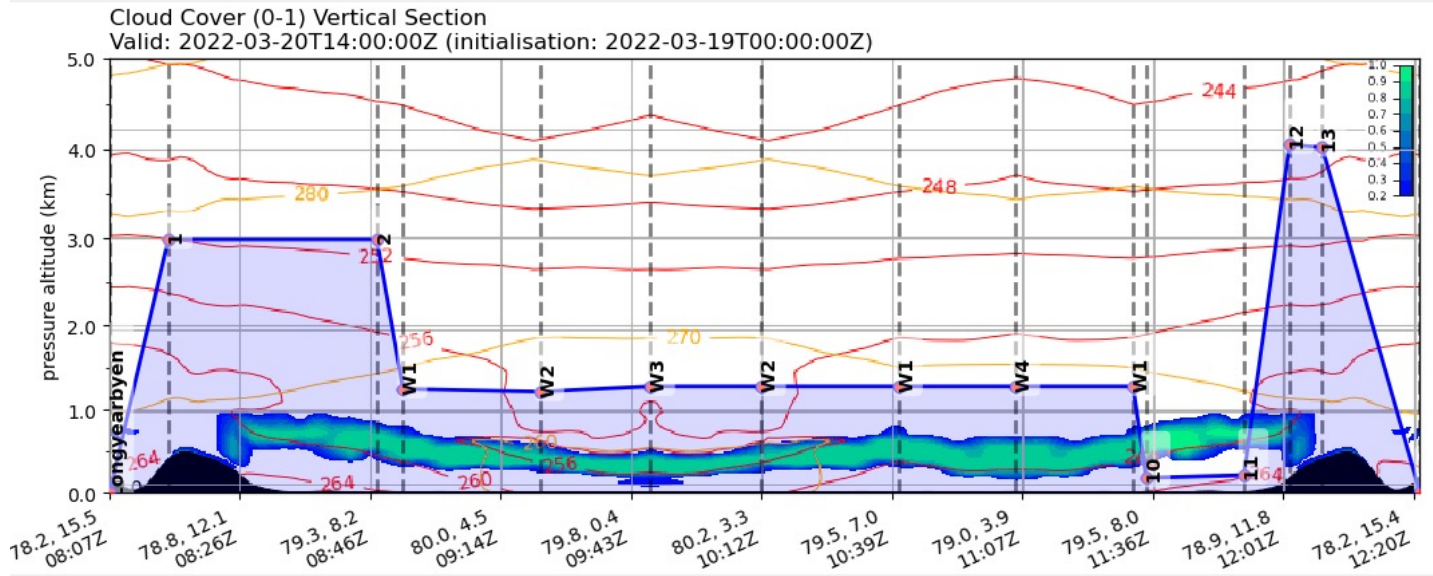
Sea Ice Cover AMSR2 (0-1) ( default )  
Valid: 2022-03-19T12:00:00Z (initialisation: ;

## Overview Map:





## Detailed Map (side view):



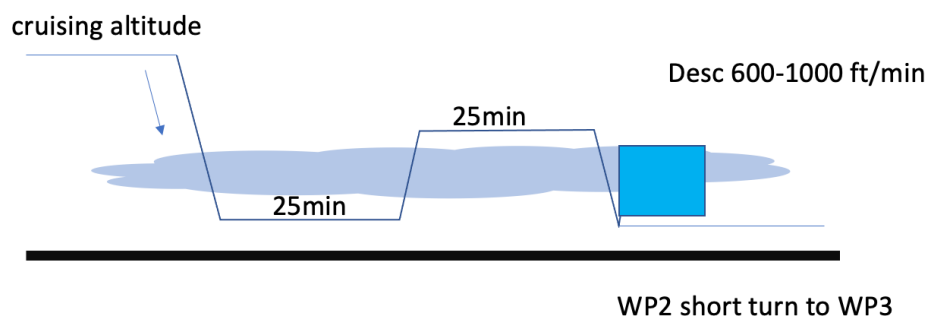
## Flight Plan:

<b>LYR – W1</b> at cruise altitude	<b>120 NM @160kn</b>	<b>48 min</b>
<b>W1 – W2</b> 200ft low level / 3000ft high level	<b>120 NM @120kn</b>	<b>60 min</b>
<b>W2 – W3</b> Stack pattern (200ft; - 3000ft)	<b>10 NM @ 120kn</b>	<b>45 min</b>
<b>W3 – W4</b> 200ft low level / 3000ft high level	<b>120 NM @ 120kn</b>	<b>60 min</b>
<b>W4 – W1</b> Stack pattern (200ft; - 3000ft)	<b>10 NM @120kn</b>	<b>25 min</b>
<b>W1 –LYR</b> climb up 12000 feet and descend	<b>120 NM @160kn</b>	<b>48 min</b>

**Total: 4 hr 45 min**

## Additional Maps:

W1 → W2: be at 200 ft already when approaching WP2

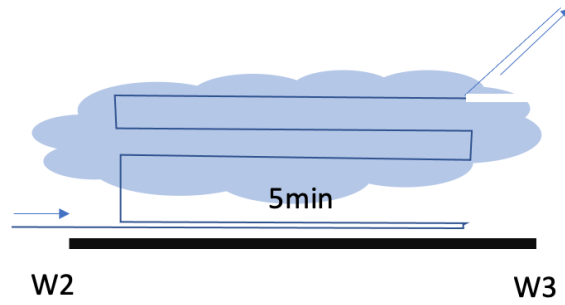




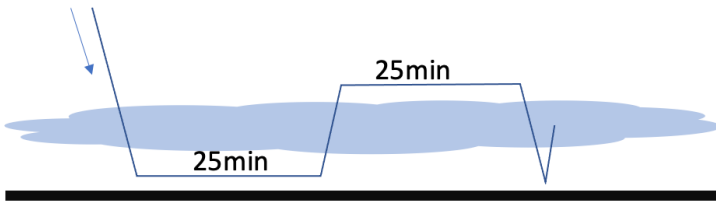
### Additional Maps:

W2 ↔ W4

Short turn to WP4  
then exit cloud

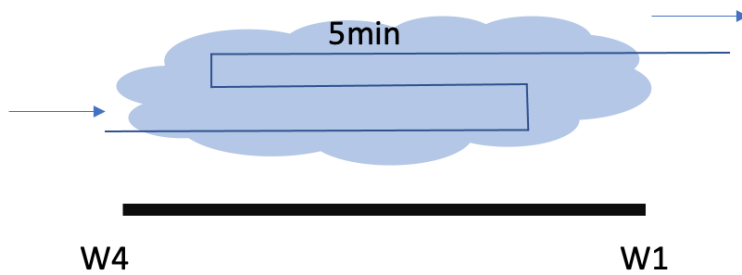


W3 → W4



WP4, short turn to WP1

W4 ↔ W1



5min @ 12000ft

