



# Flight Plan for: 26 March 2021

**POLAR 5**

Take Off: 09:00 UTC  
Duration: 5h 19min

Pilots: NN KBAL  
NN KBAL

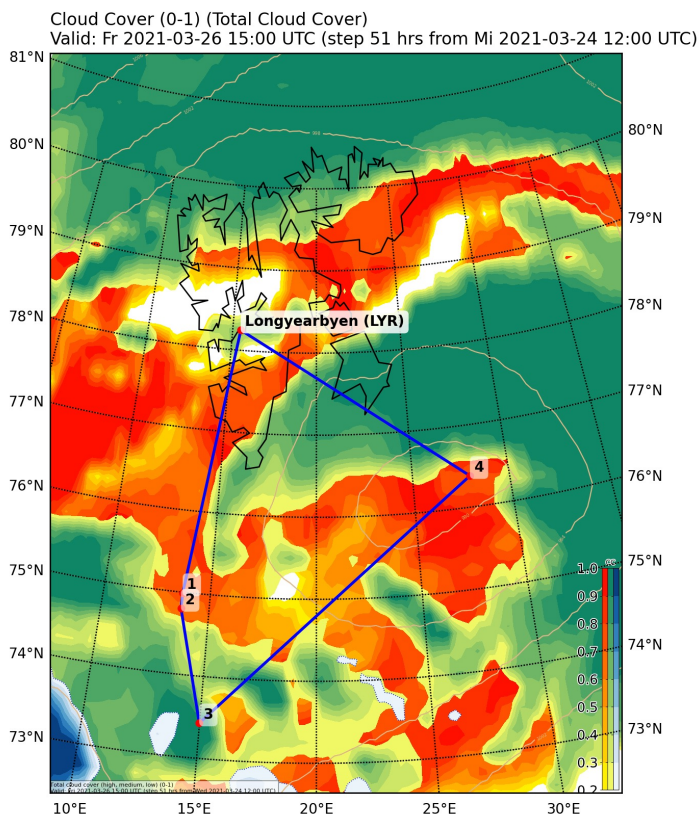
## Crew:

Mission PI	Marcus Klingebiel
AWI Ing	Martin Gehrman
Eagle/Hawk	Evi Jaekel
MiRAC	Pavel Krobot
Drop sonde	Sebastian Becker
AMALI	Birte Kula

## Waypoints:

**LYR:** 78° 14.700' N, 15° 28.920' E  
**W1:** 74° 59.400' N, 13° 42.000' E  
**W2:** 74° 48.000' N, 13° 42.000' E  
**W3:** 73° 25.800' N, 14° 59.400' E  
**W4:** 76° 22.800' N, 27° 58.200' E  
**LYR:** 78° 14.700' N, 15° 28.920' E

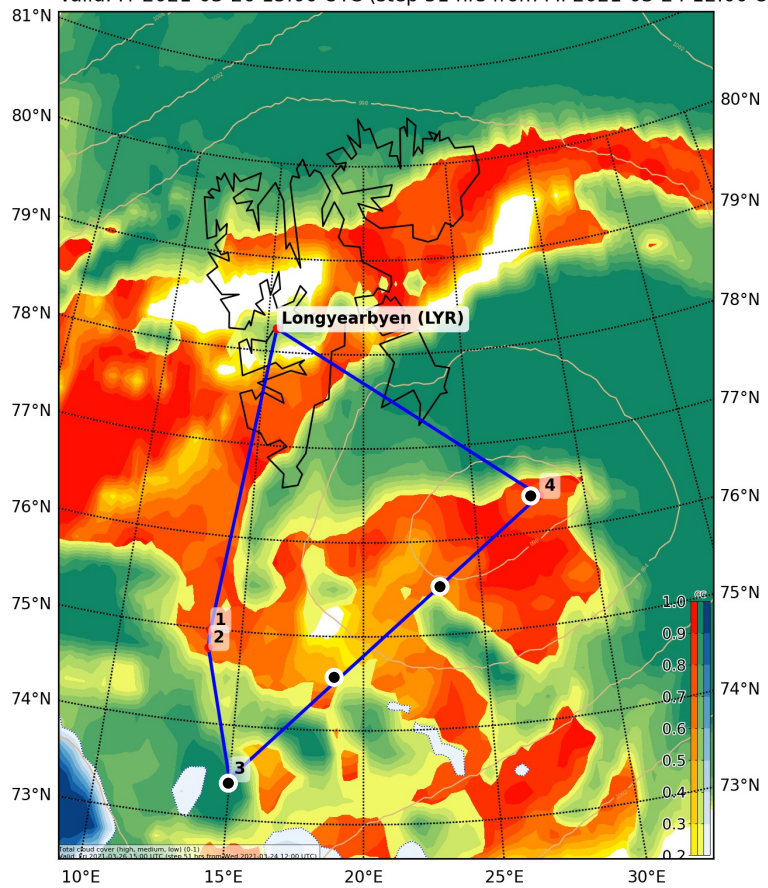
## Overview Map:





## Detailed Map:

Cloud Cover (0-1) (Total Cloud Cover)  
Valid: Fr 2021-03-26 15:00 UTC (step 51 hrs from Mi 2021-03-24 12:00 UTC)



Dropsondes ●

## Flight Plan (including drop sondes):

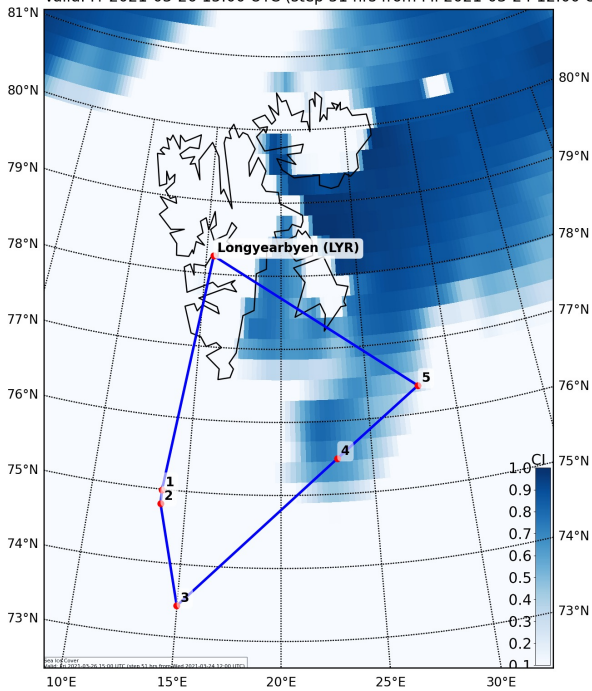
<b>LYR – W1</b> ascend FL 100: 198 NM @cruising speed	<b>74 min</b>
<b>W1 – W2</b> at FL 100: 11 NM @120kn	<b>6 min</b>
<b>W2 – W3</b> at FL 100: 32 NM@ cruising speed	<b>31 min</b>
<b>W3 - W4</b> at FL 100: 269 NM @120kn	<b>134 min</b>
Dropsonde 1: at WP3	
Dropsonde 2: 74° 30.000' N 18° 47.400 E	
Dropsonde 3: 76° 22.800' N 27° 58.200 E	
Dropsonde 4: at WP 4	
<b>W4 – LYR</b> at FL100: 65 NM @ cruising speed	<b>74 min</b>

**Total: 5 hr 19 min**

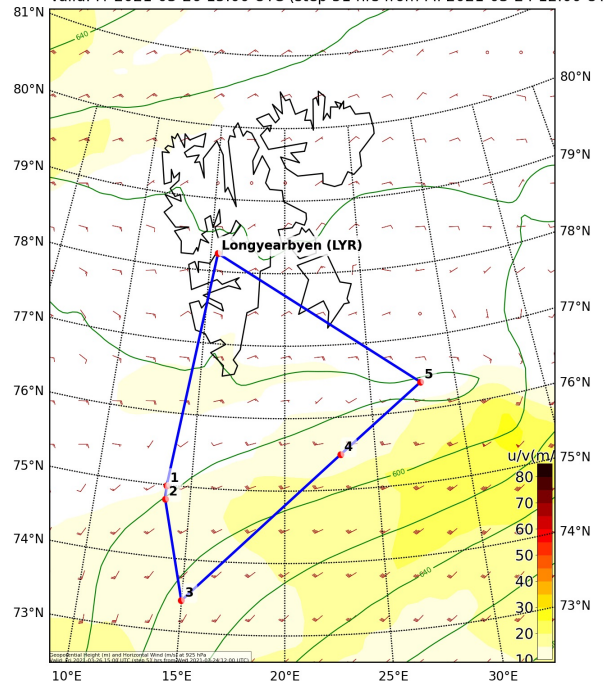


## Additional Maps:

Sea Ice Cover Fraction (0-1) (pseudocolor plot)  
Valid: Fr 2021-03-26 15:00 UTC (step 51 hrs from Mi 2021-03-24 12:00 UTC)



Geopotential Height (m) and Horizontal Wind (m/s) (Wind Speed 10-85 m/s) ε  
Valid: Fr 2021-03-26 15:00 UTC (step 51 hrs from Mi 2021-03-24 12:00 UTC)



Cloud Cover (0-1) Vertical Section  
Valid: Fr 2021-03-26 15:00 UTC (step 51 hrs from Mi 2021-03-24 12:00 UTC)

