



Flight Plan for: 20 March 2021

POLAR 6

Take Off: 10:00 UTC
Duration: 04.22 Hours

Pilots: Alan Gilbertson
Artem Brusilovskiy

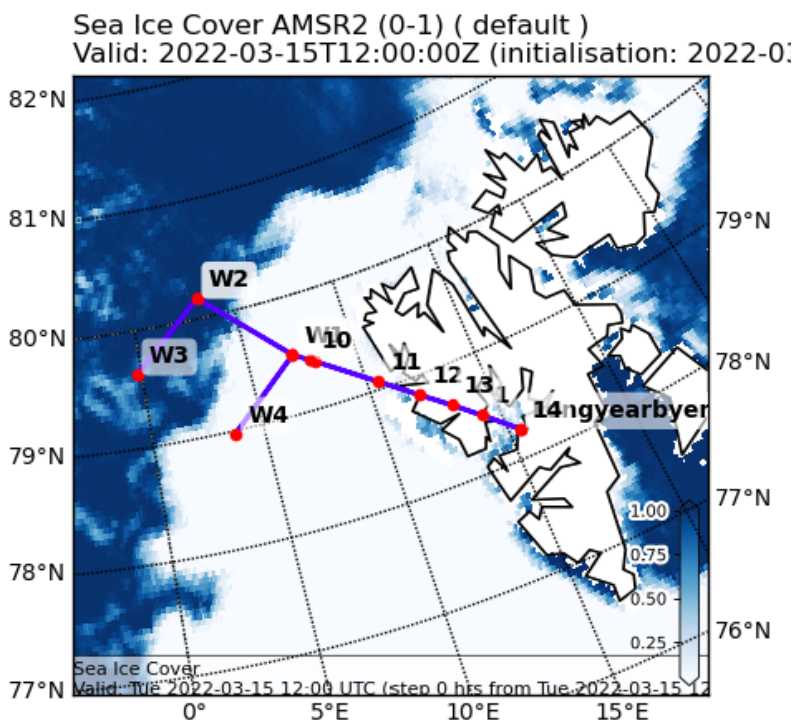
Crew:

Mission PI	Manuel Moser
AWI	Martin Gehrman
CVI	Stephan Mertes
ALABAMA /Trace gas	Hans-Christian Clemen
PMS	Johannes Lucke
Aerosol/HERA	Sarah Grawe

Waypoints:

WP1	79.50 7.12	79° 30.300' N 7° 7.500' E
WP2	80.17 3.32	80° 10.320' N 3° 19.260' E
WP3	79.62 -0.24	79° 37.500' N 0° 14.400' E
WP4	78.97 3.70	78° 58.500' N 3° 42.240' E

Overview Map:

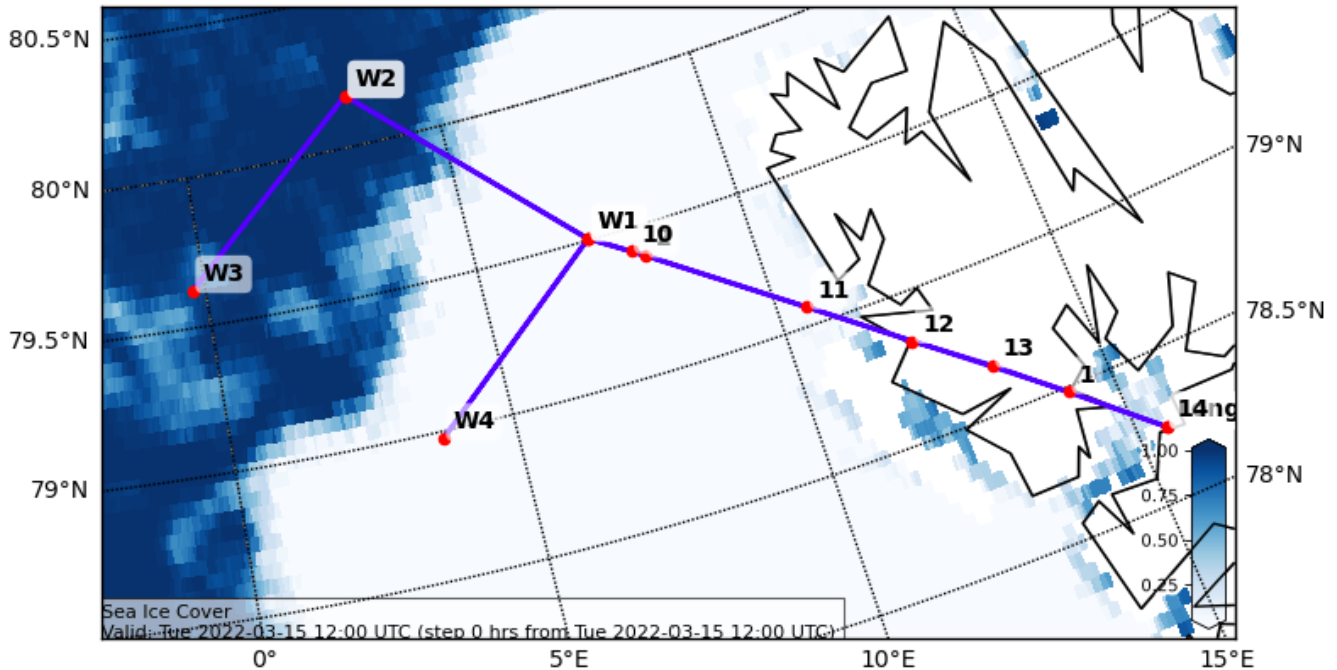




Detailed Map:

Sea Ice Cover AMSR2 (0-1) (default)

Valid: 2022-03-15T12:00:00Z (initialisation: 2022-03-15T12:00:00Z)



Flight Plan:

LYR – W1 at cruise altitude	120 NM @160kn	46 min
W1 – W2 Sawtooth pattern (800ft/min)	56 NM @120kn	28 min
W2 – W3 Staircase pattern (200ft;1150ft;2300ft)	50 NM @ 120kn	25 min
W3 – W2 Staircase pattern (200ft;1150ft;2300ft)	50 NM @ 120kn	25 min
W2 – W1 Sawtooth pattern (800ft/min)	56 NM @120kn	28 min
W1 – W4 Staircase pattern (200ft;1150ft;2300ft)	50 NM @ 120kn	25 min
W4 – W1 Staircase pattern (200ft;1150ft;2300ft)	50 NM @ 120kn	25 min
W1 –LYR' at 200ft	40 NM @ 120kn	20 min
W1 –LYR'' at FL130 (5min); FL100 (5min); rest cruise	80 NM @160kn	30 min

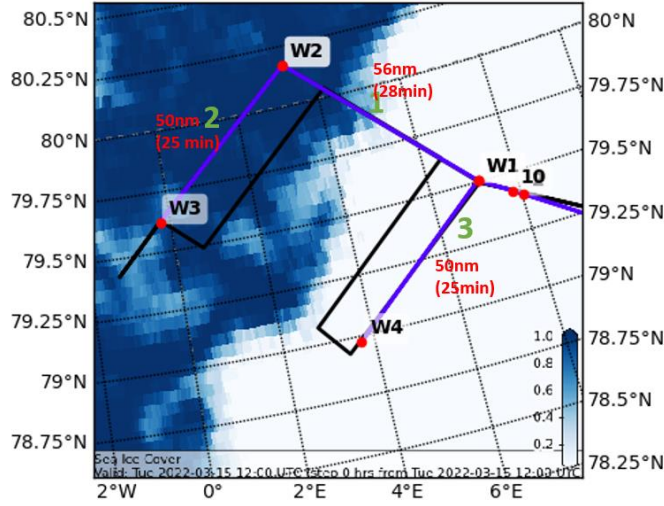
Total:

4 hr 22 min

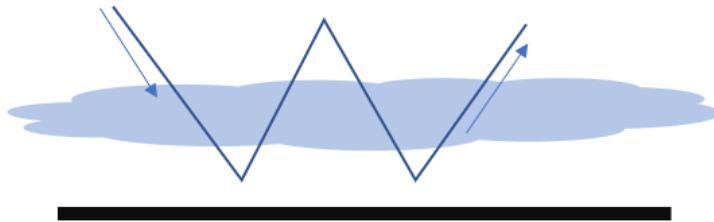


Additional Maps:

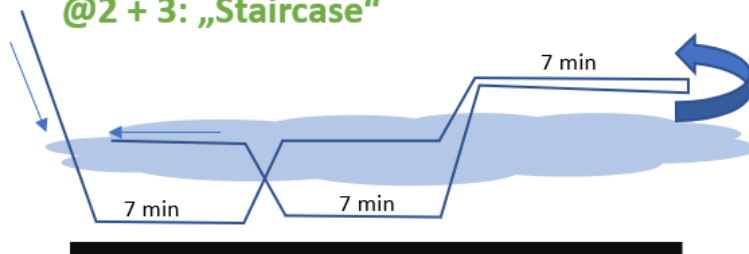
Sea Ice Cover AMSR2 (0-1) (default)
Valid: 2022-03-15T12:00:00Z (initialisation: 2022-0-



@1: „Sawtooth“



@2 + 3: „Staircase“



Cloud Cover (0-1) Vertical Section
Valid: 2022-03-20T14:00:00Z (initialisation: 2022-03-19T00:00:00Z)

