

Crew:

Mission PI	Manfred Wendisch	
AWI	Hannes Probst	
AWI	Martin Germann	Est. Take Off: 10:00 LT
Eagle/Hawk	Michael Schäfer	
MiRAC	Mario Mech	Est. Duration: 5 Hours 30 min
PMS	Manuel Moser	

Coordinates:

LYR	78° 14,7'	15° 28,9'
NY	78° 55,4'	11° 55,4'
W1	79° 07,2'	9° 25,8'
W2	82° 30,0'	6° 43,2'
W3	82° 30,0'	5° 24,0'
W4	81° 30,0'	7° 44,4'
W5	81° 30,0'	6° 24,0'
W6	78° 00,0'	10° 00,0'

8 dropsondes

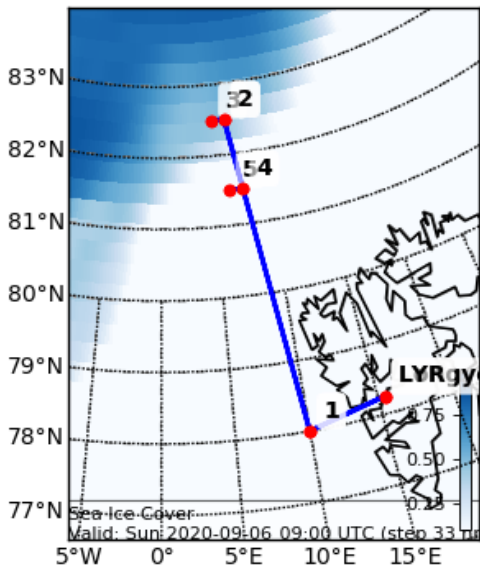
Flight Plan:

LYR – NY –W1 ascend to FL100	90 NM @ 160 kn	34 min
W1 – W2 stay at FL100	205 NM @ 160 kn	61 min
W2 – W3 stay at FL100	10 NM @ 120 kn	5 min
W3 – W2 descend to 200 ft with 2,000 ft/min		10 min
W2 ↔ W3 different levels from below	10 NM @ 120 kn	40 min
W2 –W4 saw tooth through clouds	60 NM @ 140 kn	30 min
W4 ↔ W5 different levels from below	10 NM @ 120 kn	40 min
W4 – W6 at FL100	212 NM @ 160 kn	80 min
W6 – LYR descending	69 NM @ 160 kn	26 min
		326 min

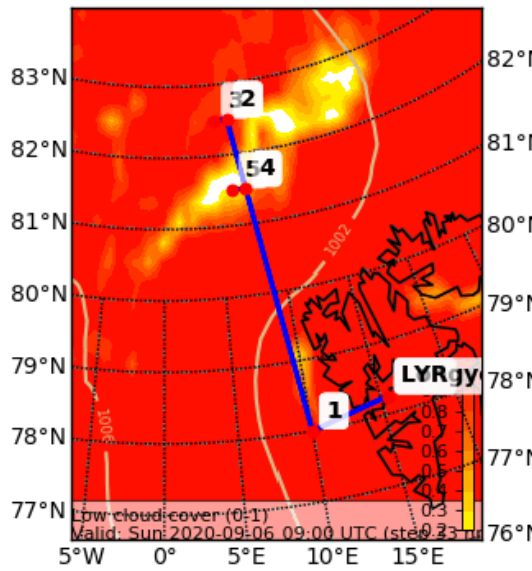
Total:

ca 5 hours 26 min

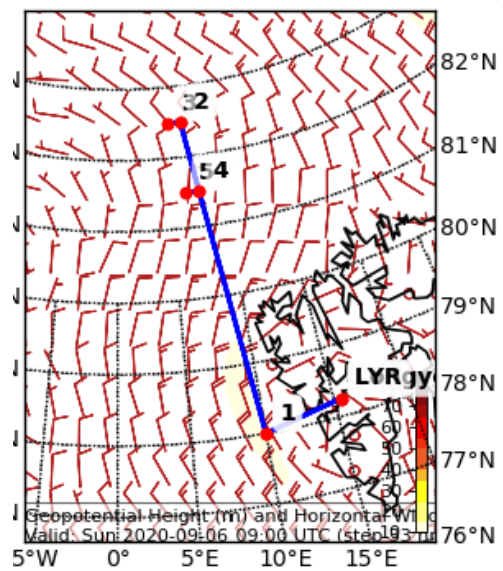
Sea Ice Cover Fraction (0-1) (pseudocolor)
Valid: Sun 2020-09-06 09:00 UTC (step 33 hrs)



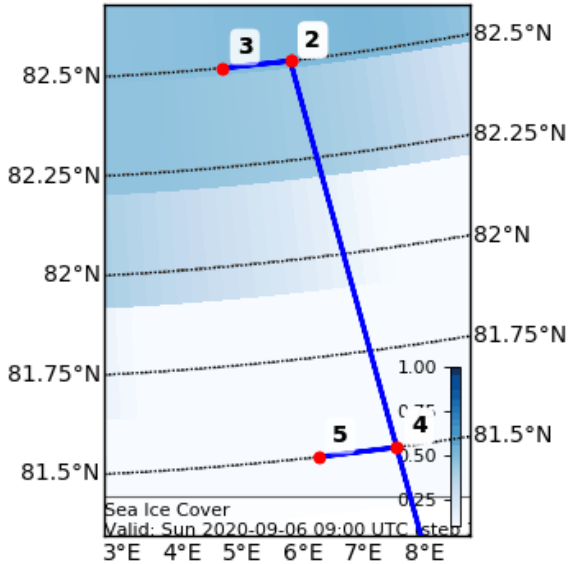
Cloud Cover (0-1) (Low Cloud Cov)
Valid: Sun 2020-09-06 09:00 UTC (step 33 hrs)



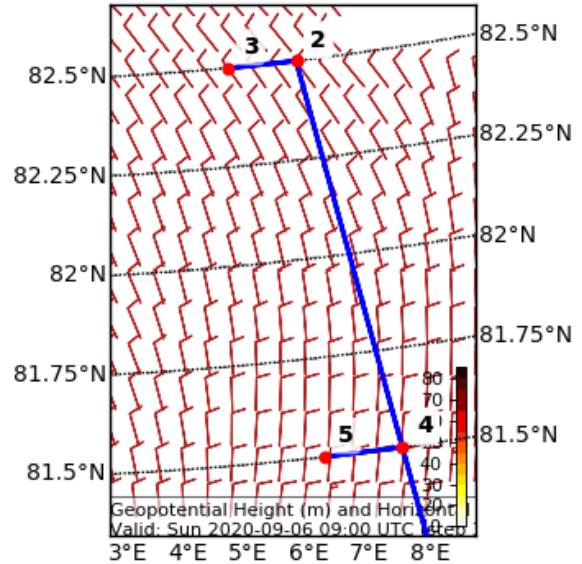
Geopotential Height (m) and Horizontal Wind
Valid: Sun 2020-09-06 09:00 UTC (step 33 hrs)



Sea Ice Cover Fraction (0-1) (pseudocolor)
Valid: Sun 2020-09-06 09:00 UTC (step 33 hrs)

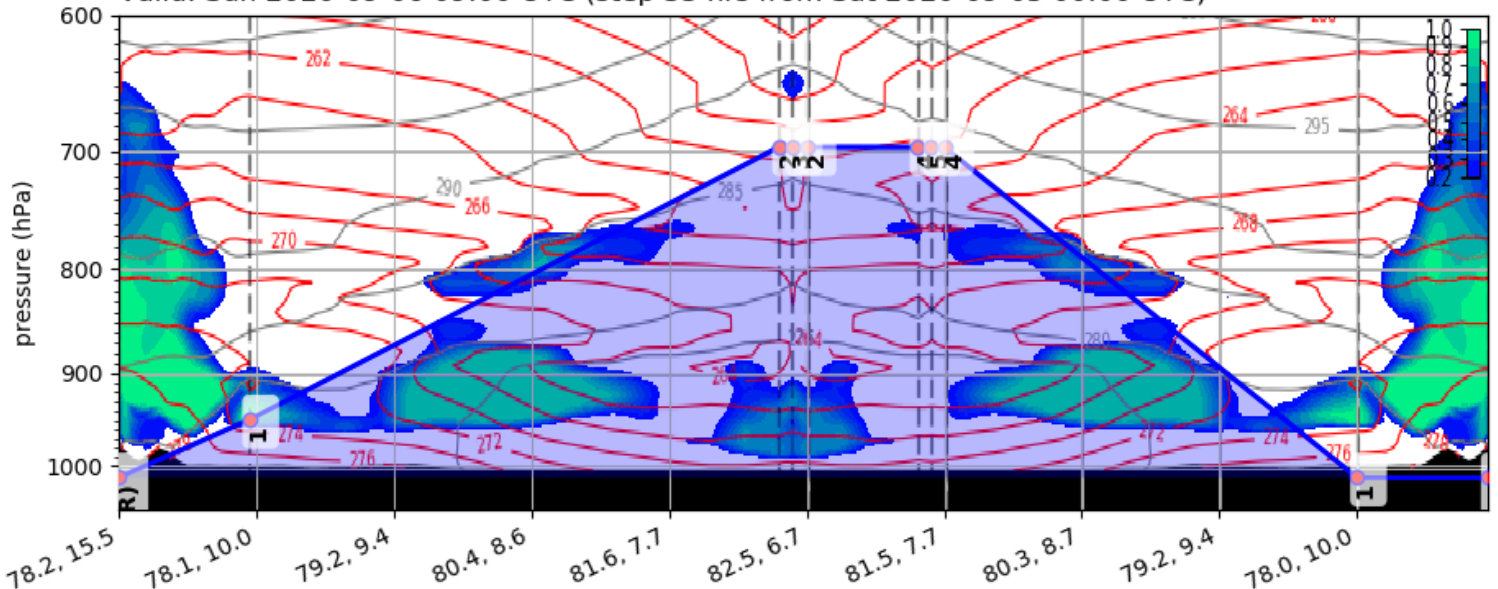


Geopotential Height (m) and Horizontal Wind
Valid: Sun 2020-09-06 09:00 UTC (step 33 hrs)



Cloud Cover (0-1) Vertical Section

Valid: Sun 2020-09-06 09:00 UTC (step 33 hrs from Sat 2020-09-05 00:00 UTC)



MOSAIC-ACA Flight 2020 09 06—short

POLAR 5

Crew:

Mission PI

André Ehrlich

AWI

Hannes Probst

Est. Take Off: 10:00 LT

AWI

Martin Germann

Eagle/Hawk

Michael Schäfer

Est. Duration: 3 h 30 min

MiRAC

Mario Mech

PMS

Manuel Moser

Coordinates:

LYR	78° 14,7'	15° 28,9'
W1	78° 00,0'	5° 00,0'
W2	78° 00,0'	3° 00,0'
W3	77° 40,0'	3° 00,0'
W4	77° 40,0'	5° 00,0'
W5	77° 20,0'	5° 00,0'
W6	77° 20,0'	3° 00,0'
W7	77° 00,0'	3° 00,0'
W8	77° 00,0'	4° 00,0'
W9	77° 30,0'	4° 00,0'
W10	78° 00,0'	4° 00,0'

4 dropsondes

W1—W2

W3—W4

W5—W6

W7—W8

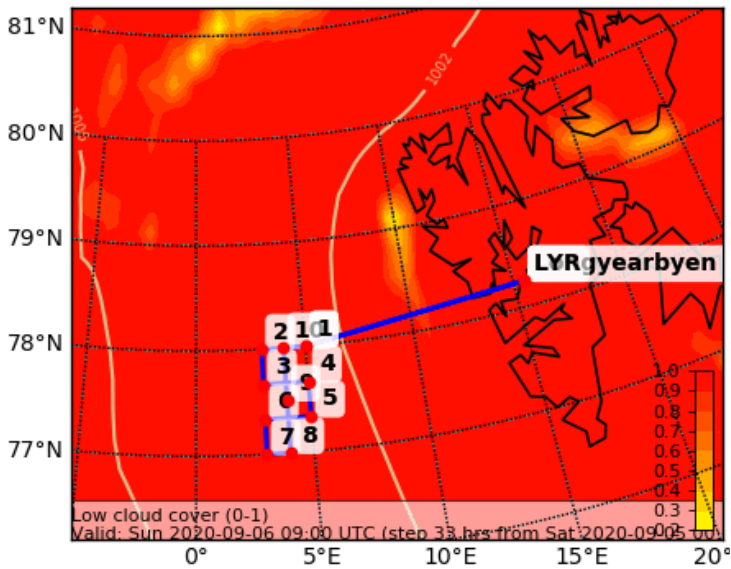
Flight Plan:

LYR – W1 ascent to FL100	130 NM @ 160kn	50 min
W1 – W2 at FL100	25 NM @ 140kn	12 min
W2 – W3 at FL100	20 NM @ 140kn	10 min
W3 – W4 at FL100	25 NM @ 140kn	12 min
W4 – W5 at FL100	20 NM @ 140kn	10 min
W5 – W6 at FL100	25 NM @ 140kn	12 min
W6 – W7 at FL100	20 NM @ 140kn	10 min
W7 – W8 at FL100	13 NM @ 140kn	6 min
W8 – W9 <u>Descent</u> to 200 ft, 1500 ft/min	30 NM @ 140kn	15 min
W9 – W10 <u>Ascent</u> to FL100, 1500 ft/min	30 NM @ 140kn	15 min
W10 – W1 – LYR Go home	142 NM @ 160kn	55 min

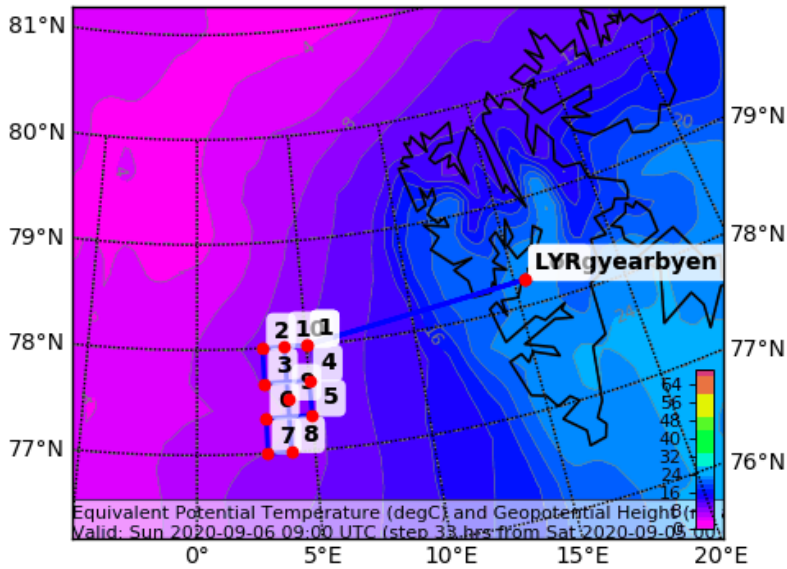
Total:

3 hours 30 min

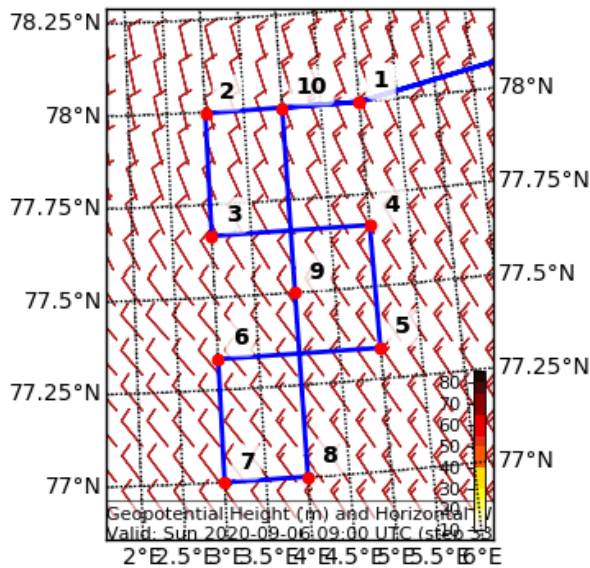
Cloud Cover (0-1) (Low Cloud Cover)
Valid: Sun 2020-09-06 09:00 UTC (step 33 hrs fr



Equivalent Potential Temperature (degC) and Geopot
Valid: Sun 2020-09-06 09:00 UTC (step 33 hrs from S



Geopotential Height (m) and Horiz
Valid: Sun 2020-09-06 09:00 UTC (s



Cloud Cover (0-1) Vertical Section
Valid: Sun 2020-09-06 09:00 UTC (step 33 hrs from Sat 2020-09-05 00:00 UTC)

