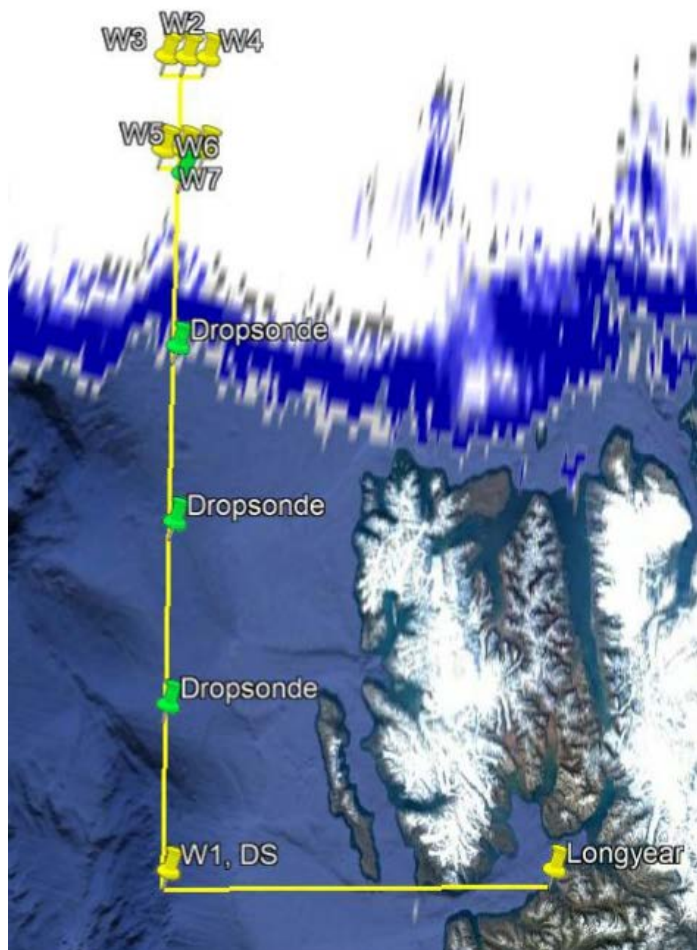


Flightplan 25 March 2019



- W1: 78° 0.86' N 8° 5.228'E
- W2: 81°10.95' N 4° 16.038'E
- W3: 81° 9.939'N 3°44.940'E
- W4: 81°12.153'N 4°48.371'E
- W5: 80°49.2558'N 4°50.781'E
- W6: 80°48.221'N 4°20.4323'E
- W7: 80°50.4188'N 5°20.8041'E

- Dropsonde 1 at: W1
- Dropsonde 2 at 78°39.9408'N
- Dropsonde 3 at: 79°22.8956'N
- Dropsonde 4 at: 80° 3.7275'N
- Dropsonde 5 at: 80°43.895'N

LJR → W1 in 10.000 ft, 160 Kn 94 Nm	35 min
W1 -> W2 in 10.000 ft, 160 Kn 198 Nm	1 hr 14 min
Temp down at W2 to 200 ft	
W2 -> W3 200 ft, W3 -> W4 200 ft.....Staircase 6 legs	60 min
W2 -> W6 as slow descend to 200 ft	
W6 -> W7 200 ft 10 Nm Staircase 4 legs	40 min
W5 → W1 Sawteeth 175 Nm	1 hr 20 min
W1 → LJR in 10.000 ft 160 Kn 94 Nm	35 min
Total:	5 hr 24 min

Participants: Pilots: Jim Haffey, Marc-Andre Verner

Christof Lüpkes (PI), Mario Mech, Yvonne Boose, Michael Schäfer, Günter Schwarz, Sebastian Spelz

W1: 78° 0'52.06"N 8° 5'13.68"E

W2: 81°10'57.29"N 4°16'2.28"E

W3: 81° 9'56.39"N 3°44'56.43"E

W4: 81°12'9.20"N 4°48'22.27"E

W5: 80°49'15.35"N 4°50'46.89"E

W6: 80°48'13.27"N 4°20'25.94"E

W7: 80°50'25.13"N 5°20'48.25"E

Dropsonde 1 at: W1

Dropsonde 2 at 78°39'56.45"N

Dropsonde 3 at: 79°22'53.74"N

Dropsonde 4 at: 80° 3'43.65"N

Dropsonde 5 at: 80°43'53.70"N