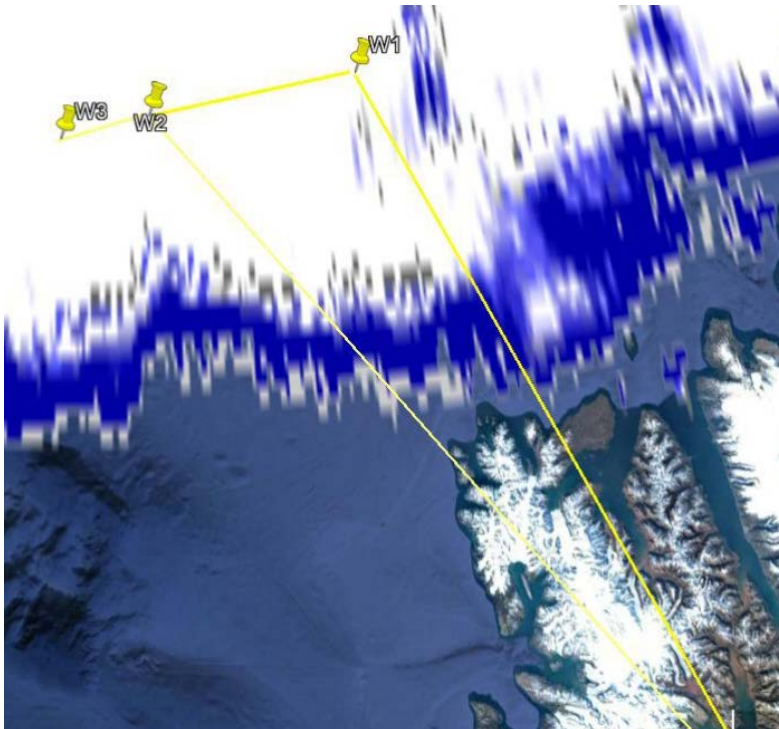


Flightplan 21 March 2019



**W1: 81° 6.094' N
9° 38.132' E**

**W2: 80°59.987' N
5°0' E**

**W3: 80°55.496' N
3° 3.149 E**

LYR → W1 in 10.000 ft, 160 Kn 210 Nm 1 hr 19 min

Arrive at W1 in 200 ft

W1 → W2: 200 ft 80, 100, 120, 140, 120, 100, 80 Kn 49 Nm 25 min

W2 → W3 200 ft 22 Nm 120 Kn 11 min

Temp to 3000 ft 15 min

W3 → W2 (exactly on track W2 -> W3) 22 Nm 120 Kn 11 min

W2 → LYR 10.000 ft 160 Kn 242 Nm 1hr 30 min

Estimated total flight time: 4 - 4.5 hr

Participants:

**Pilots: Jim Haffey, Marc-Andre Verner
Christof Lüpkes (PI), Mario Mech, Yvonne Boose
Leif Leonard Kliesch, Michael Schäfer
Cristina Sans Coll**