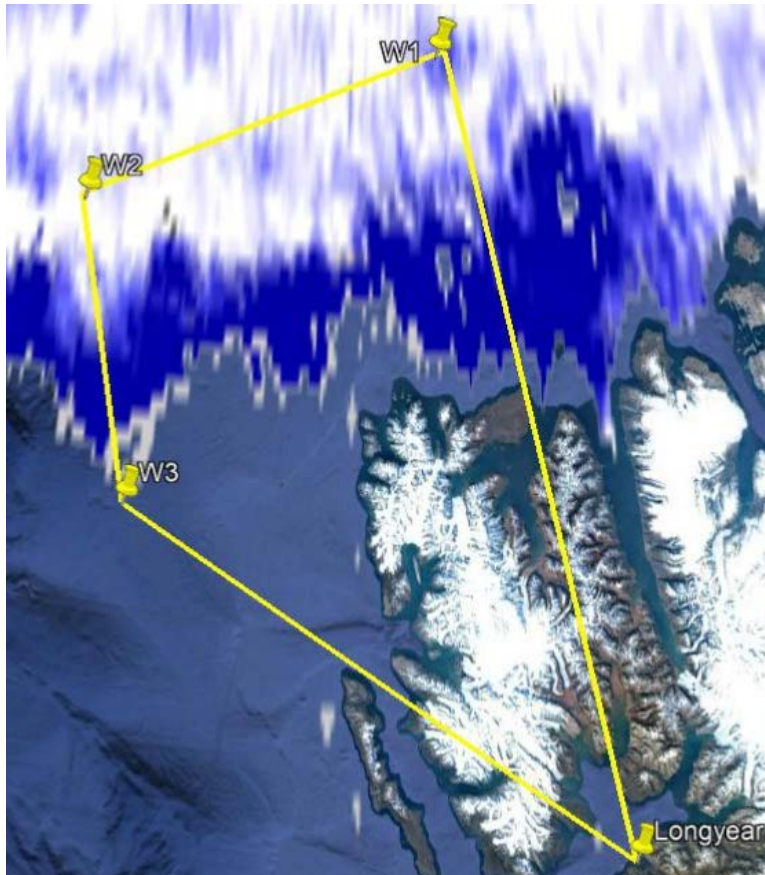


Flightplan 11 April 2019



For pilots:

W1: 81° 00.000' N 12° 4.000' E

W2: 80° 27.300' N 04° 52.354' E

W3: 79° 25.565' N 06° 16.418' E

For AWI:

W1: 81.000 N 12.067 E

W2: 80.455 N 04.873 E

W3: 79.426 N 06.274 E

LYR → W1 in 10.000 ft, 167 Nm

160 Kn

1 hr 3 min

Dropsonde 1 at 80.5 N on way LYR → W1

Arrive at W1 in 200 ft (Temp, 1000 ft/min)

At W1 staircase leg length 13 Nm 120 Kn 70 min

W1 → W2 sawteeth or 200 ft dependent on clouds 75 Nm 120 Kn 38 min

At W2 Staircase 120 Kn 70 min

W2 → W3 65 Nm, 200 ft and sawteeth 120 Kn 33 min

W3 → LYR 126 Nm 160 Kn 47 min

Total:

5 hr 22 min

Participants:

Pilots: Jim Haffey, Marc-Andre Verner

Christof Lüpkes (PI), Johannes Stapf, Sebastian Spelz, Pavel Krobot, Yvonne Boose

