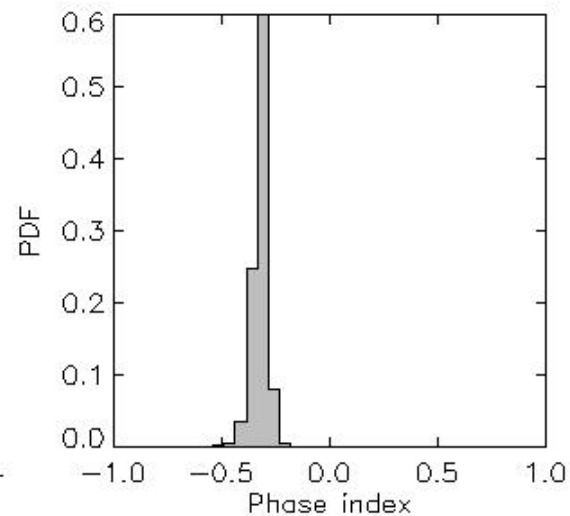
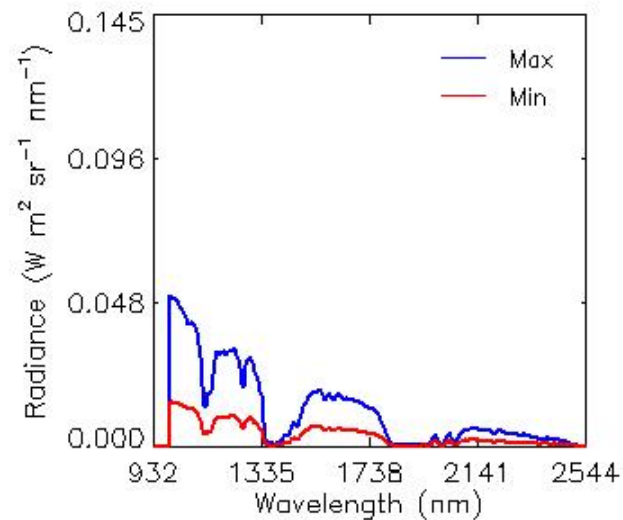
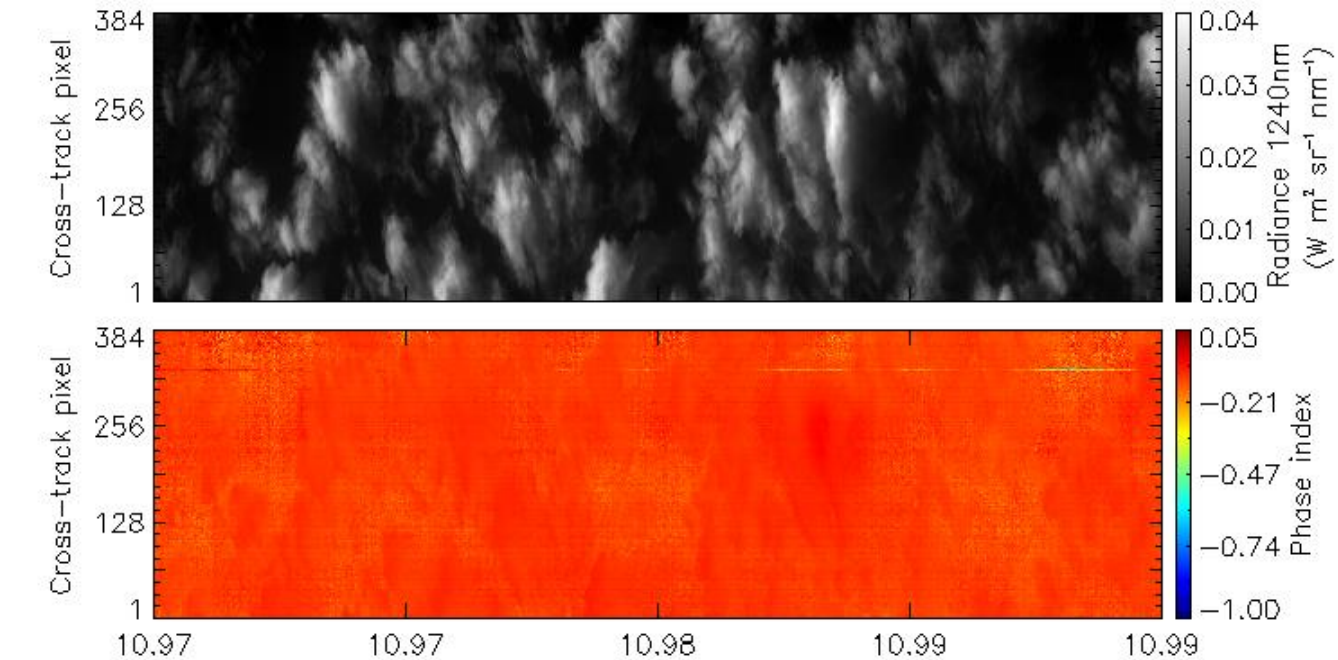
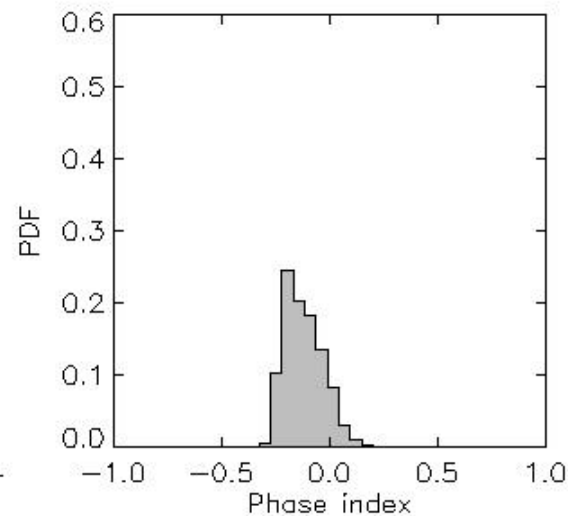
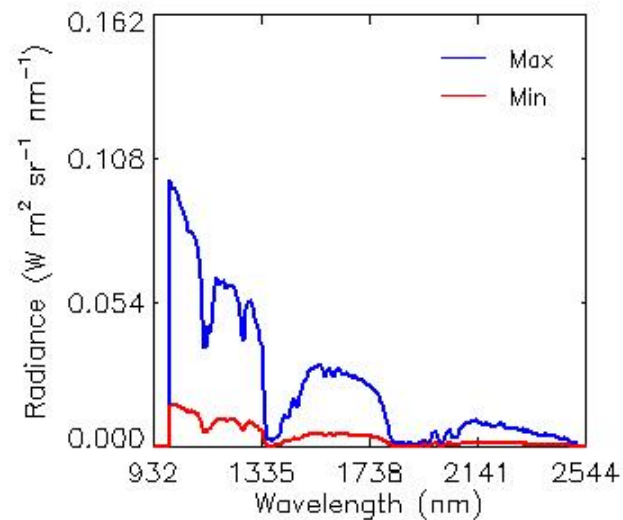
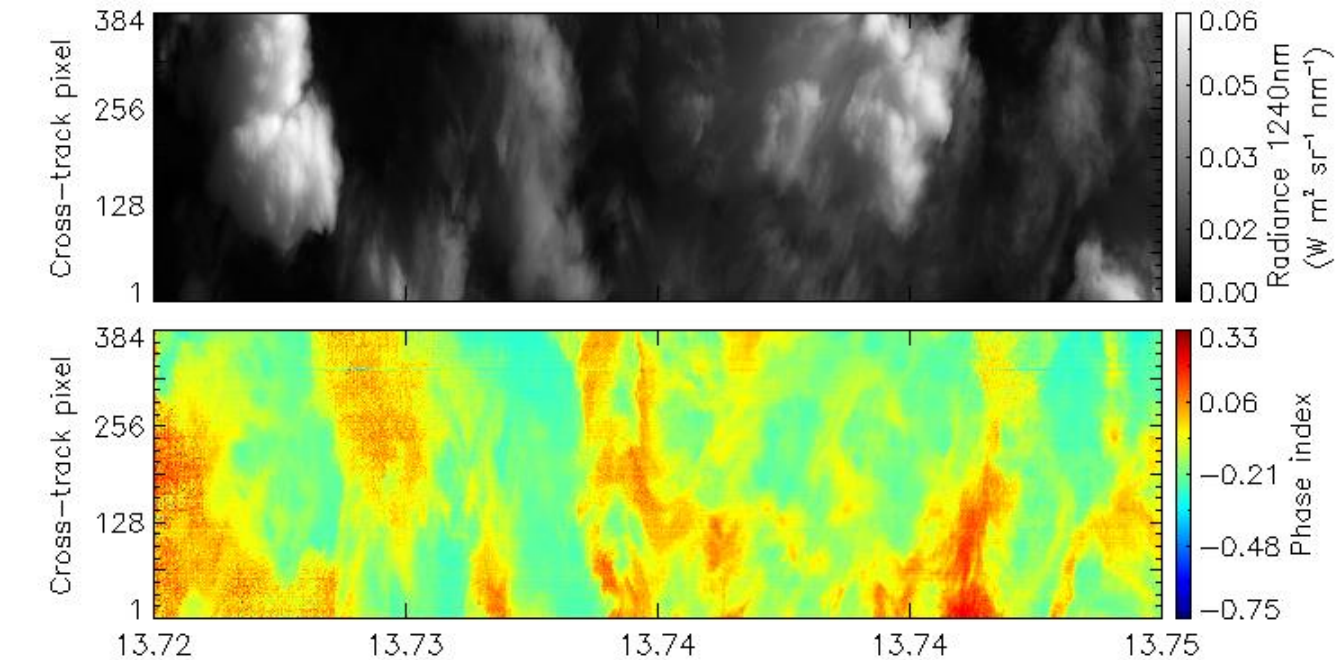


Flight 06 (30/03)



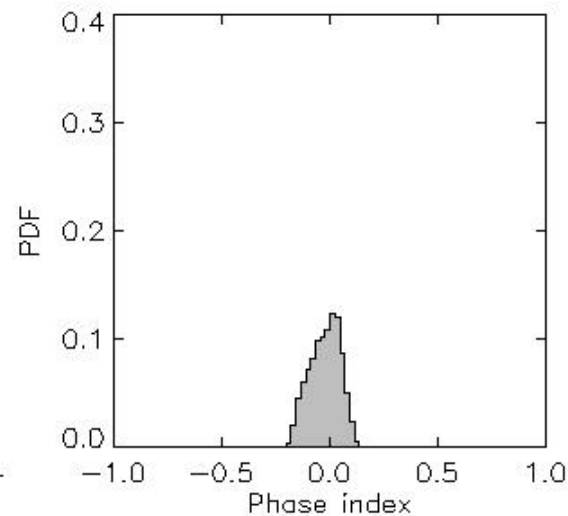
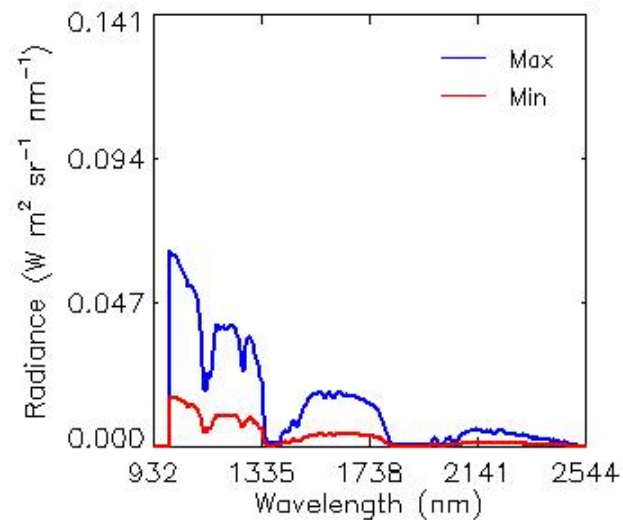
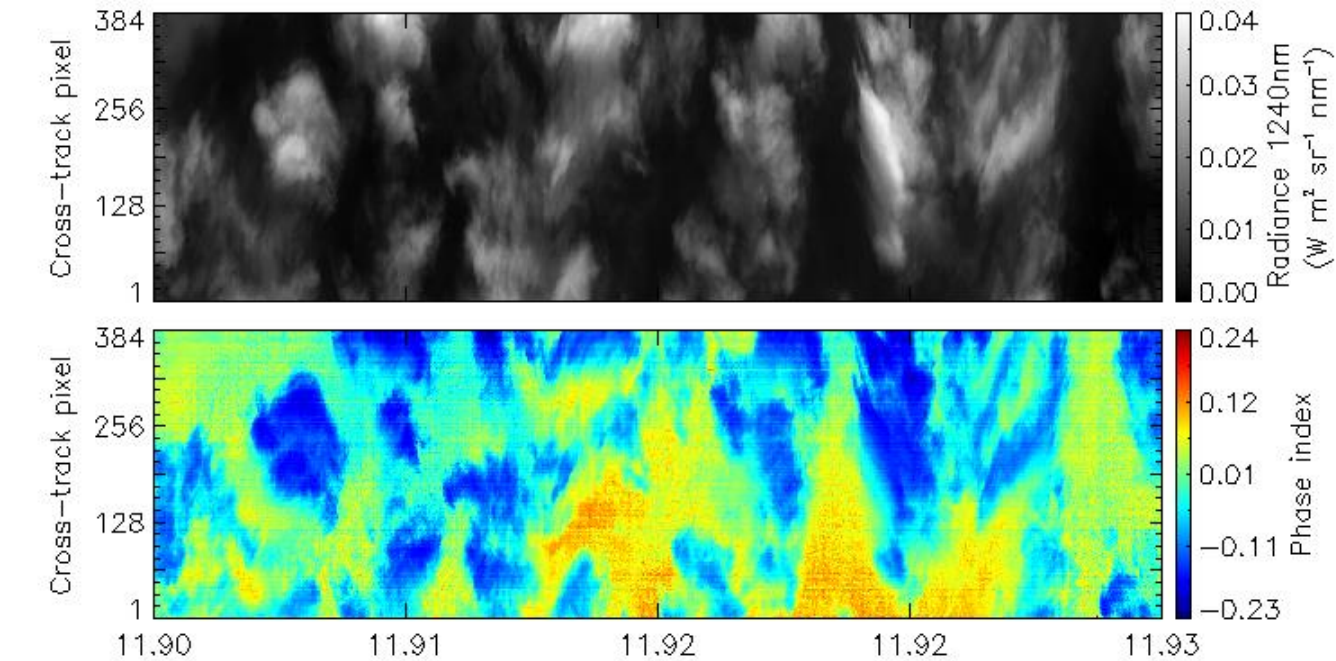
Liquid clouds

Flight 07 (31/03)



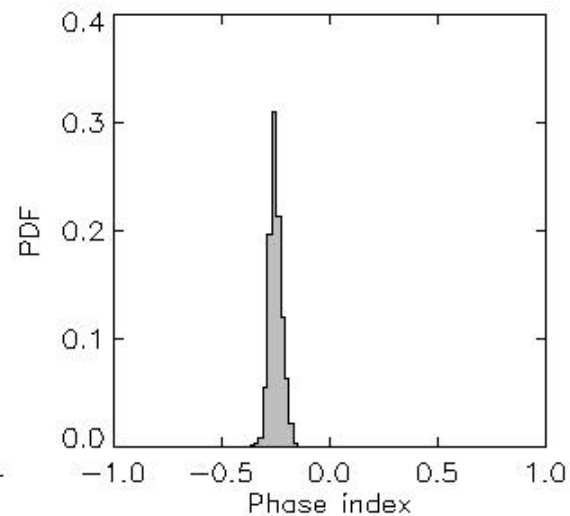
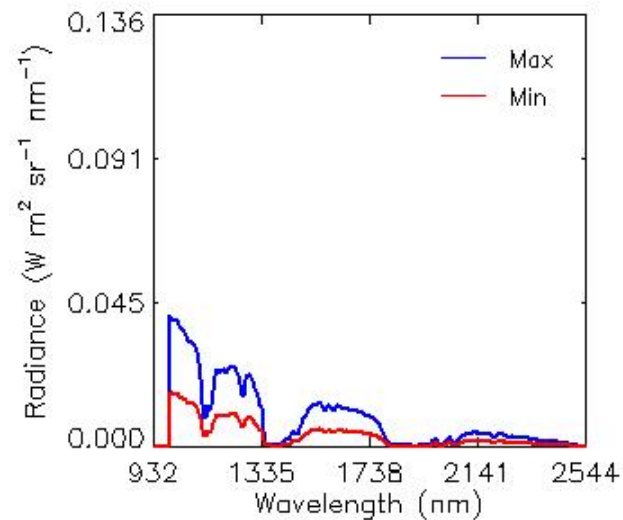
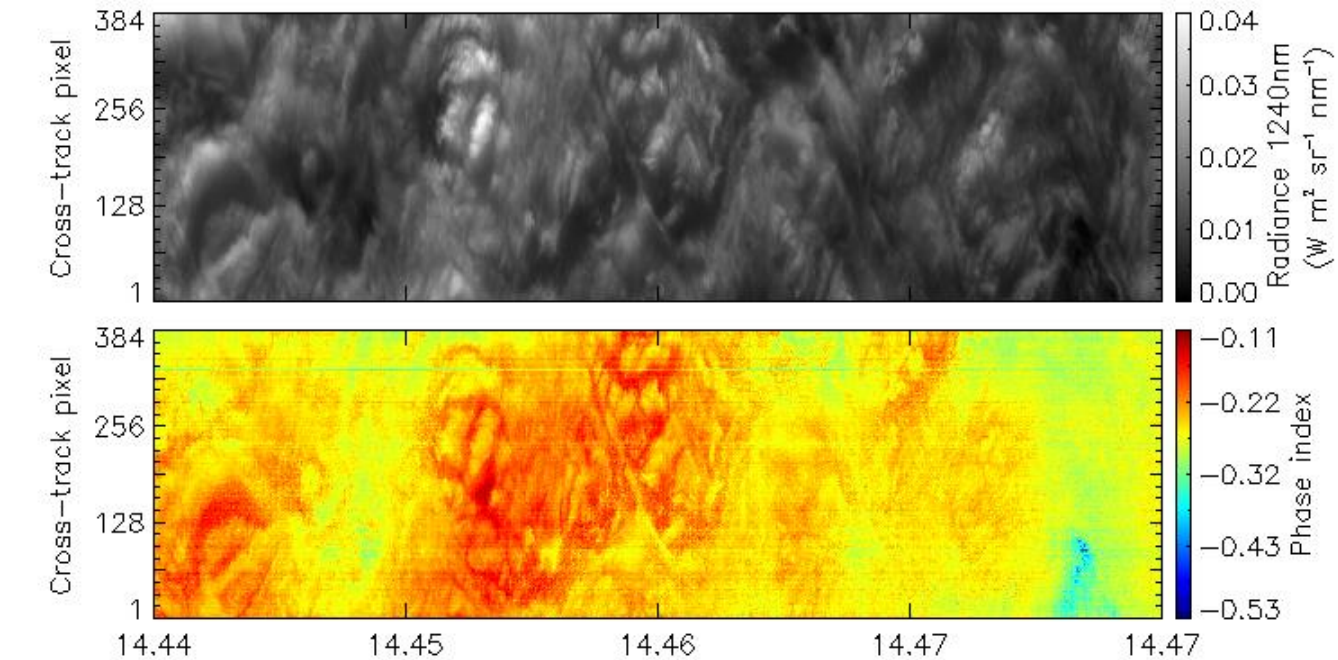
Liquid clouds but
positive phase
index over open
water (??)

Flight 08 (01/04)



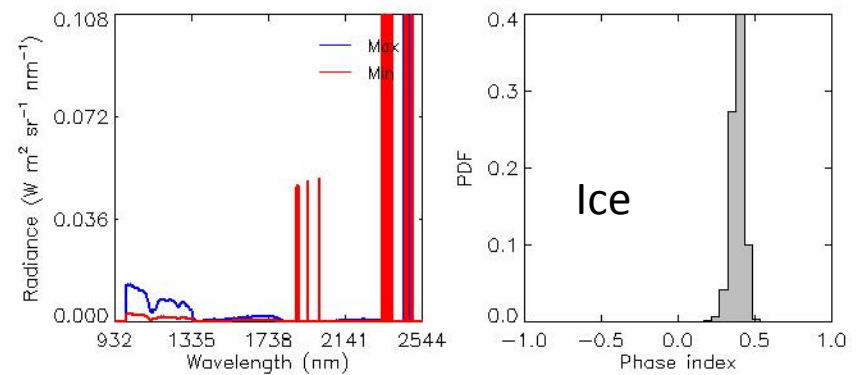
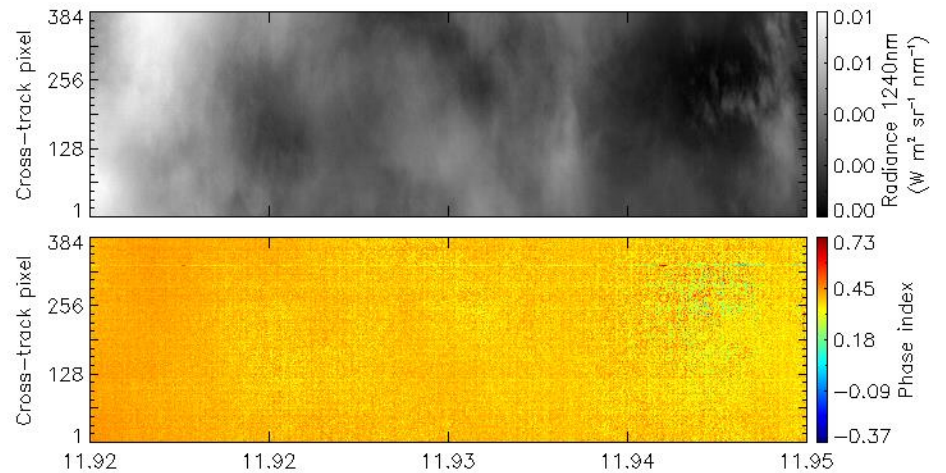
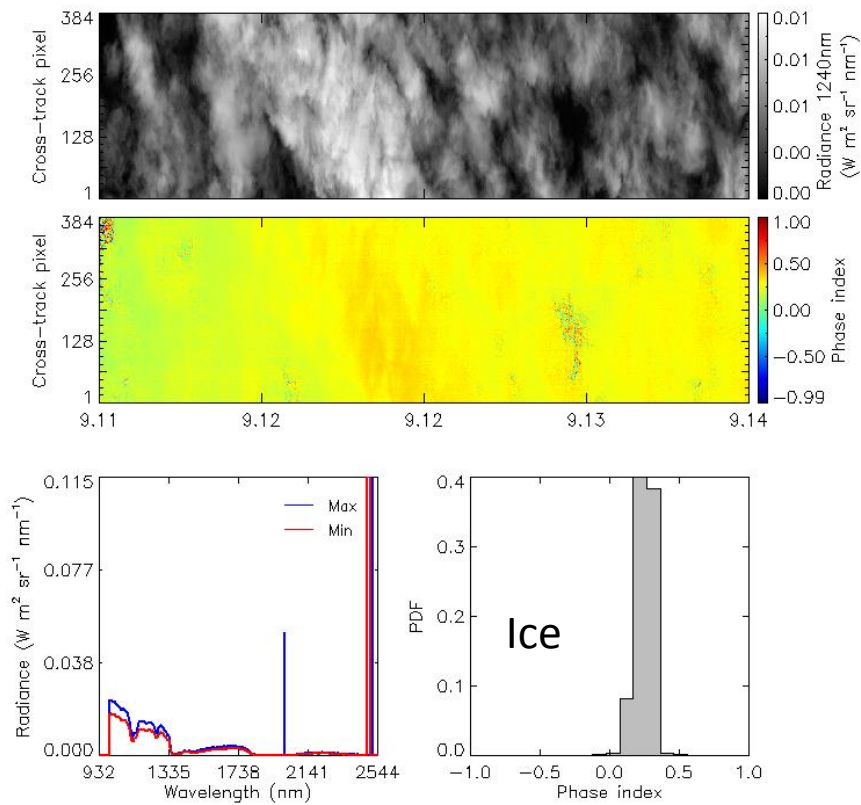
Liquid clouds but
positive phase
index over open
water (??)

Flight 09 (03/04)



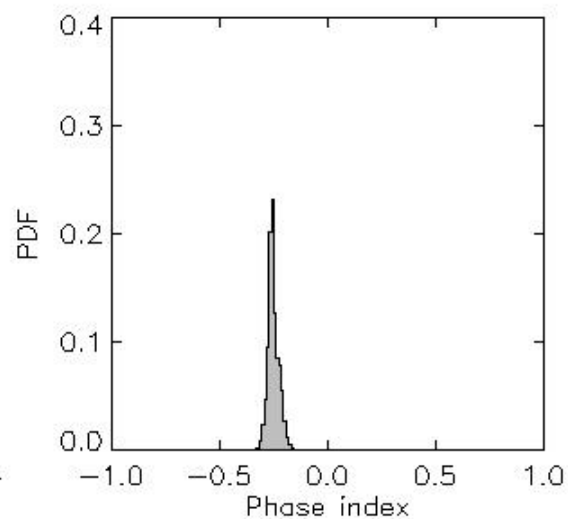
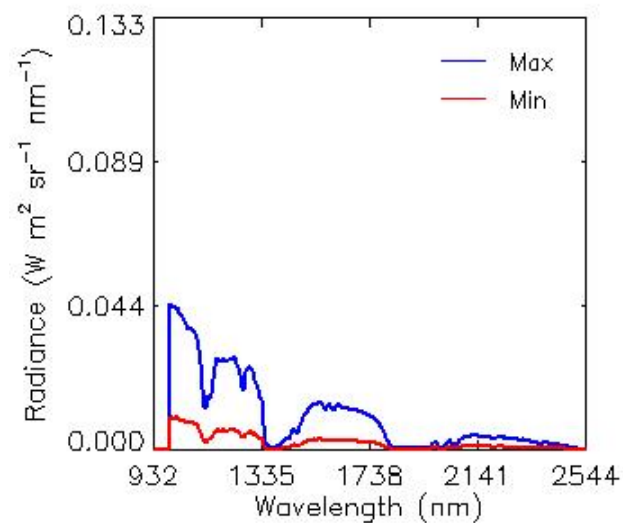
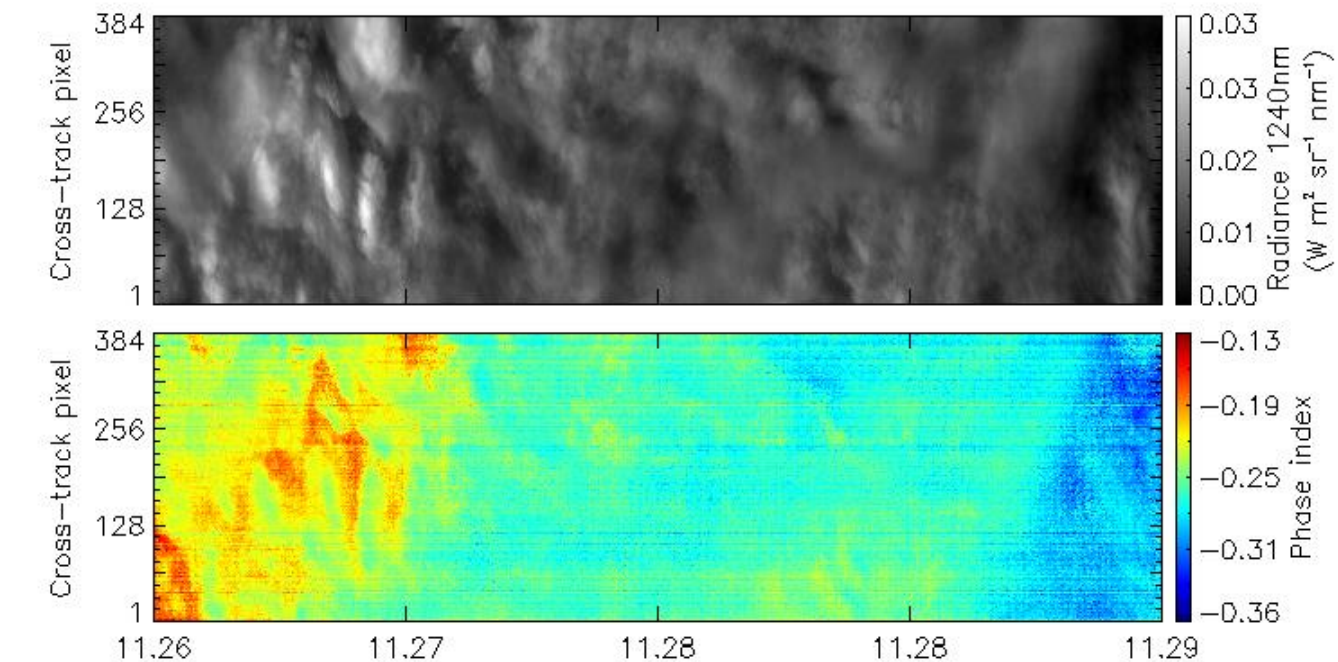
Liquid water
clouds

Flight 10 (04/04)



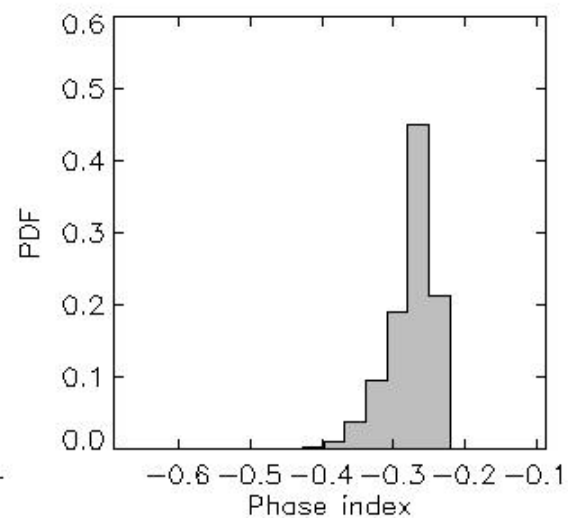
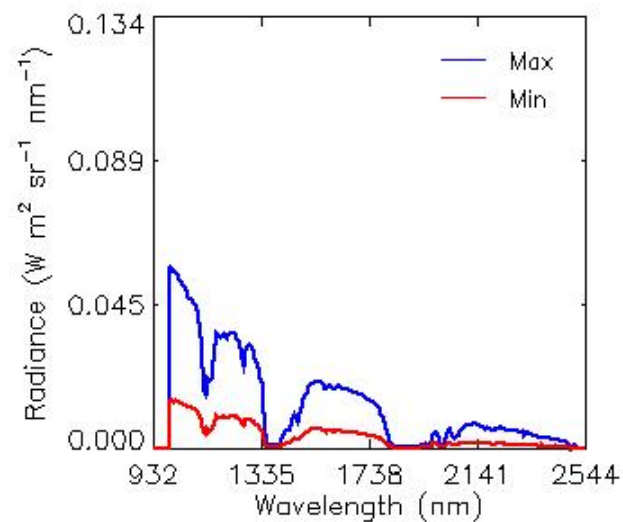
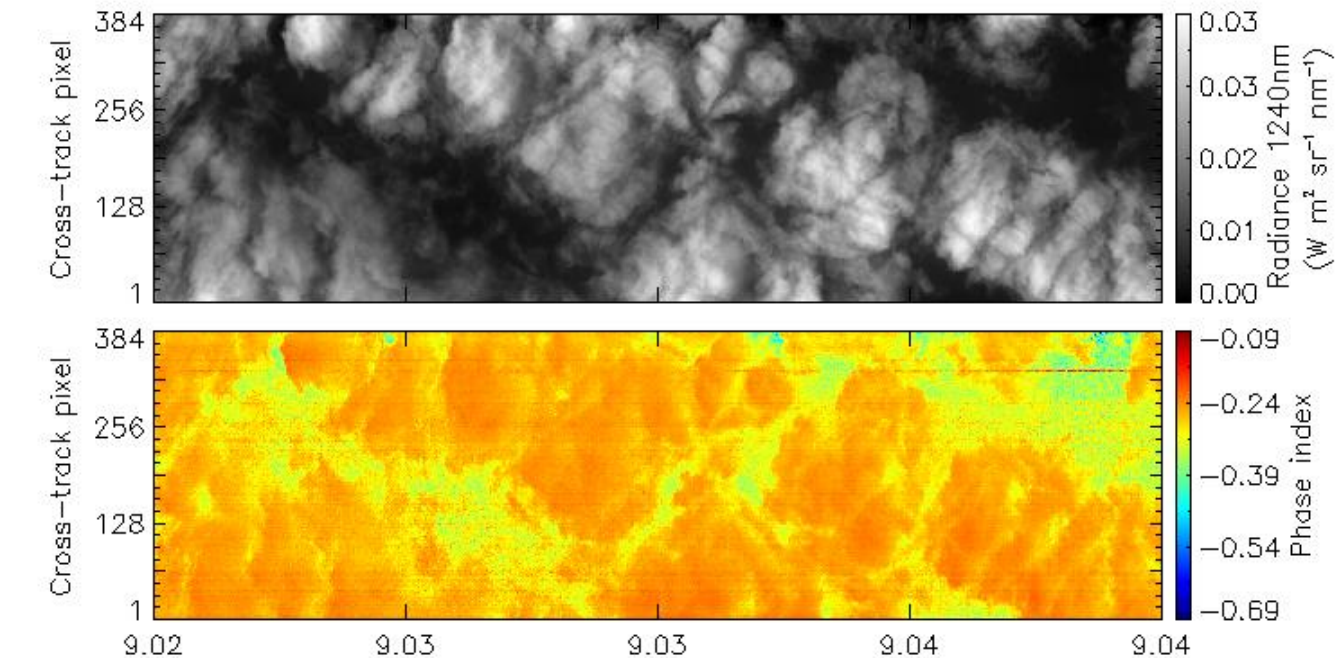
Warm air advection?

Flight 11 (06/04)



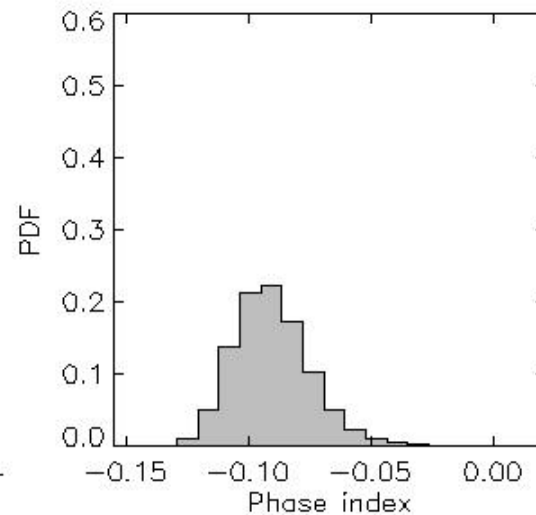
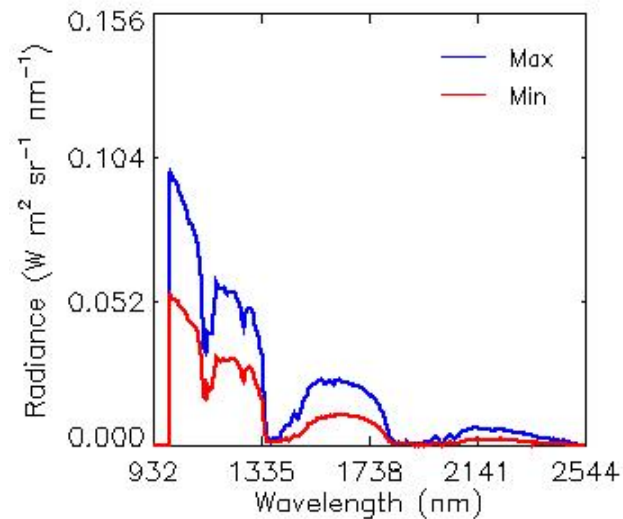
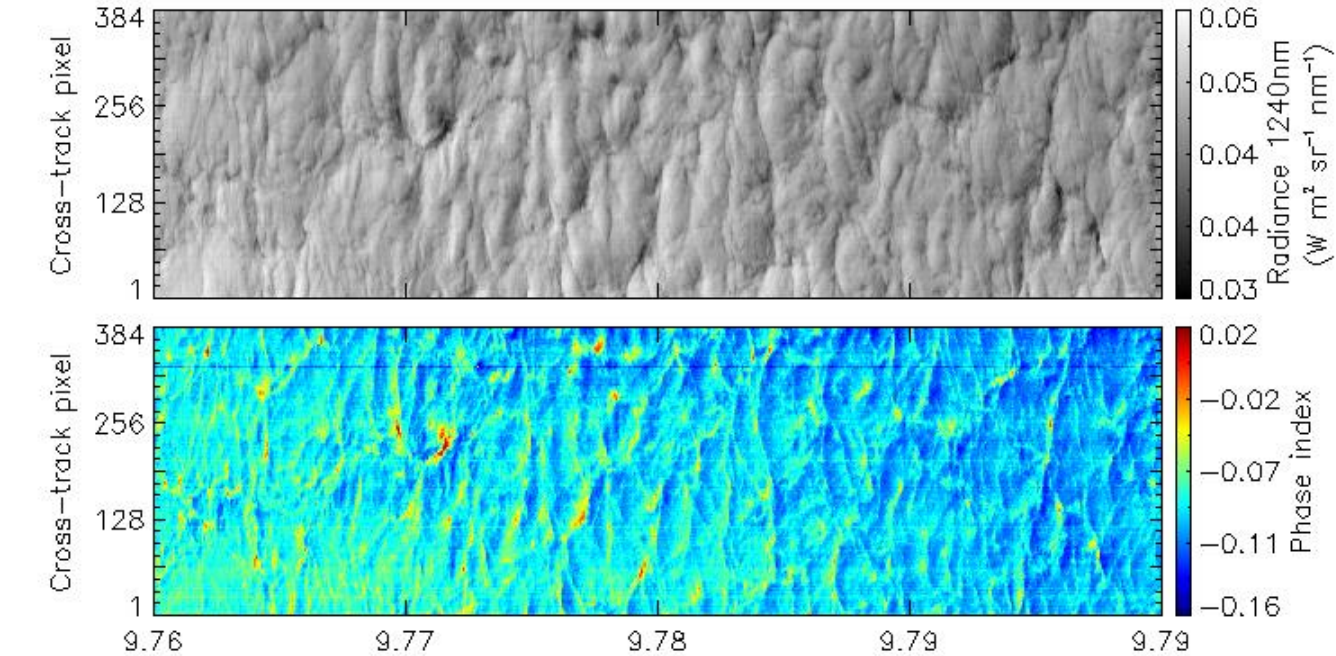
Liquid water
clouds

Flight 05 ACLOUD (25/05/2017)



Liquid clouds
according to
phase index... but
mixed in reality

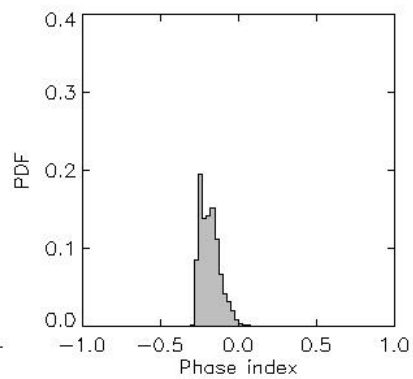
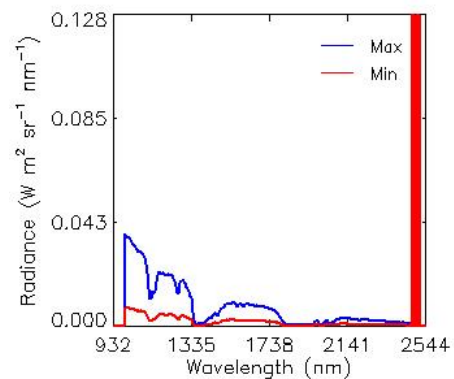
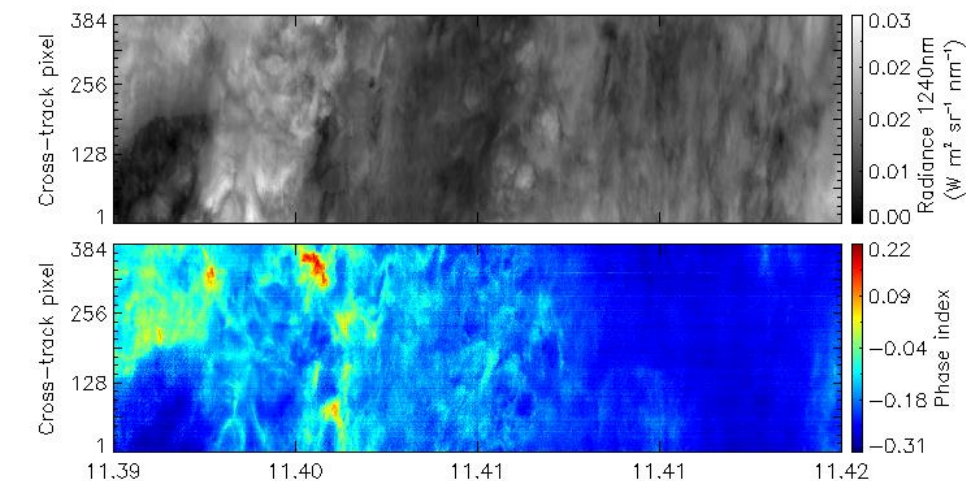
Flight 11 ACLOUD (02/06/2017)



Liquid clouds
according to
phase index... but
mixed in reality

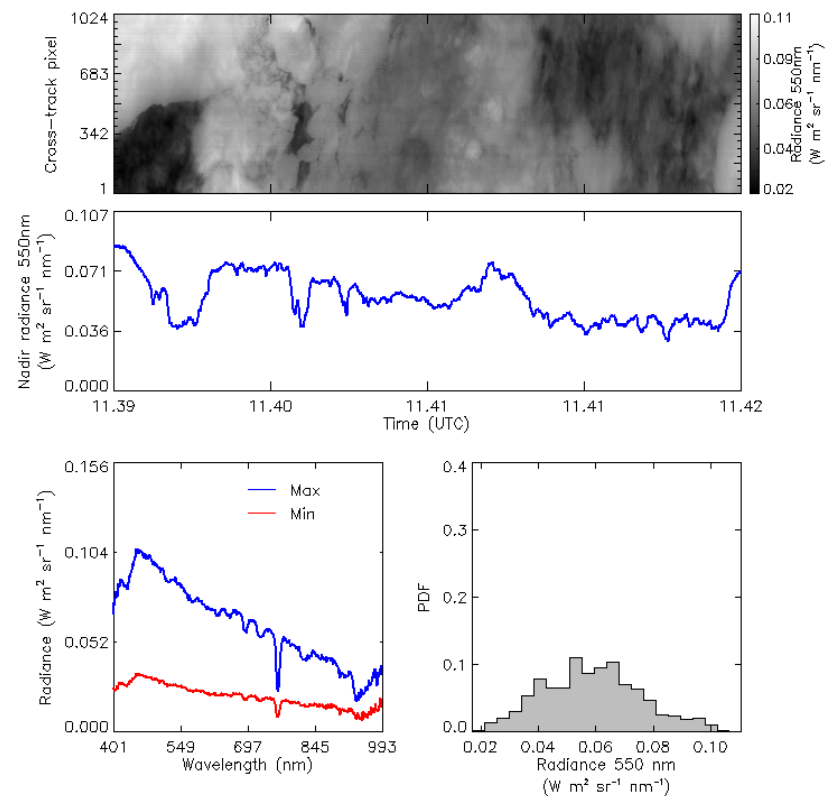
Flight 12 (07/04)

HAWK (1240 nm)



Ice from the surface

EAGLE (550 nm)



Flight 06 (30/03) (EAGLE 550nm)

