

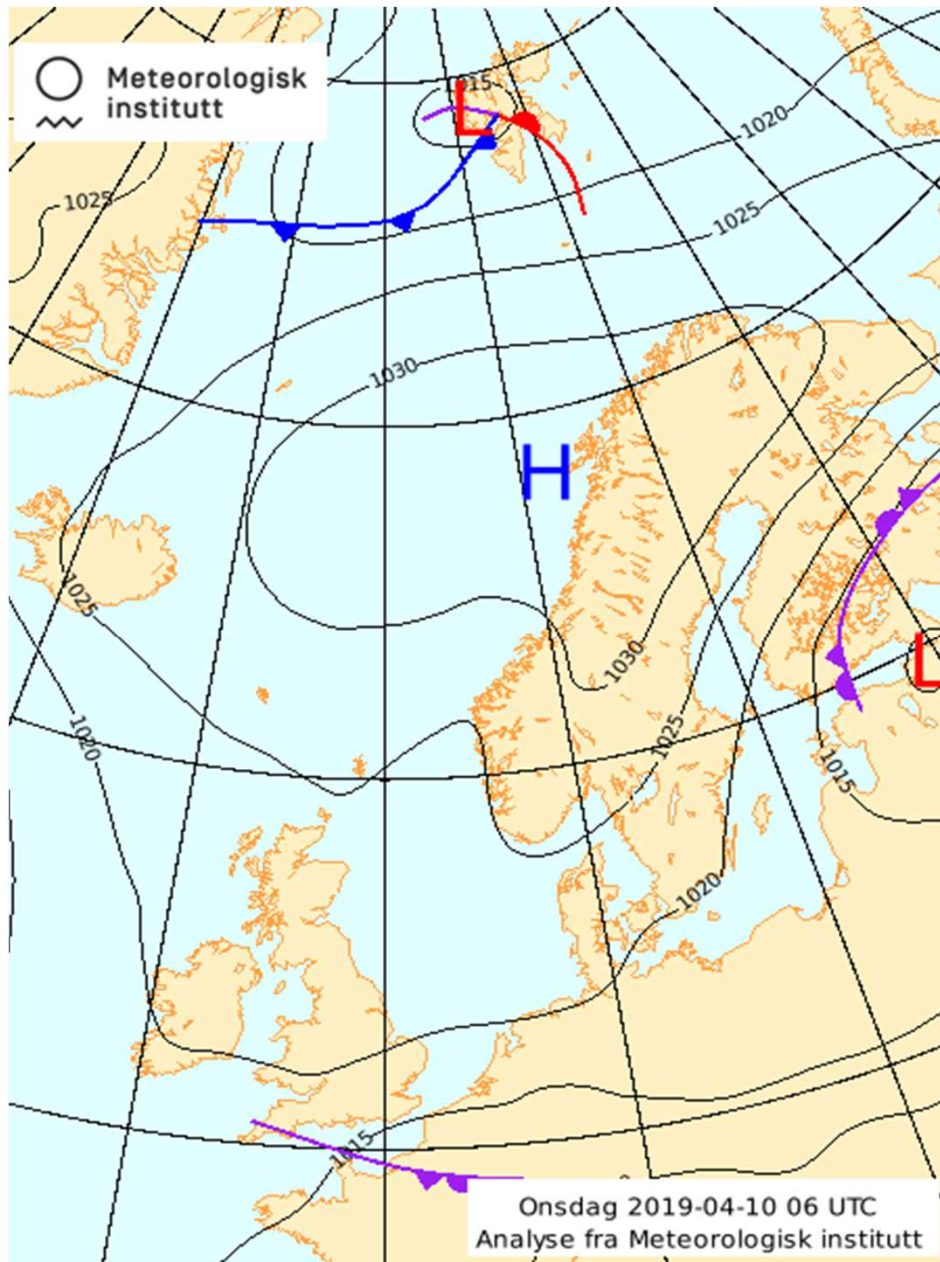
Weather briefing

AFLUX

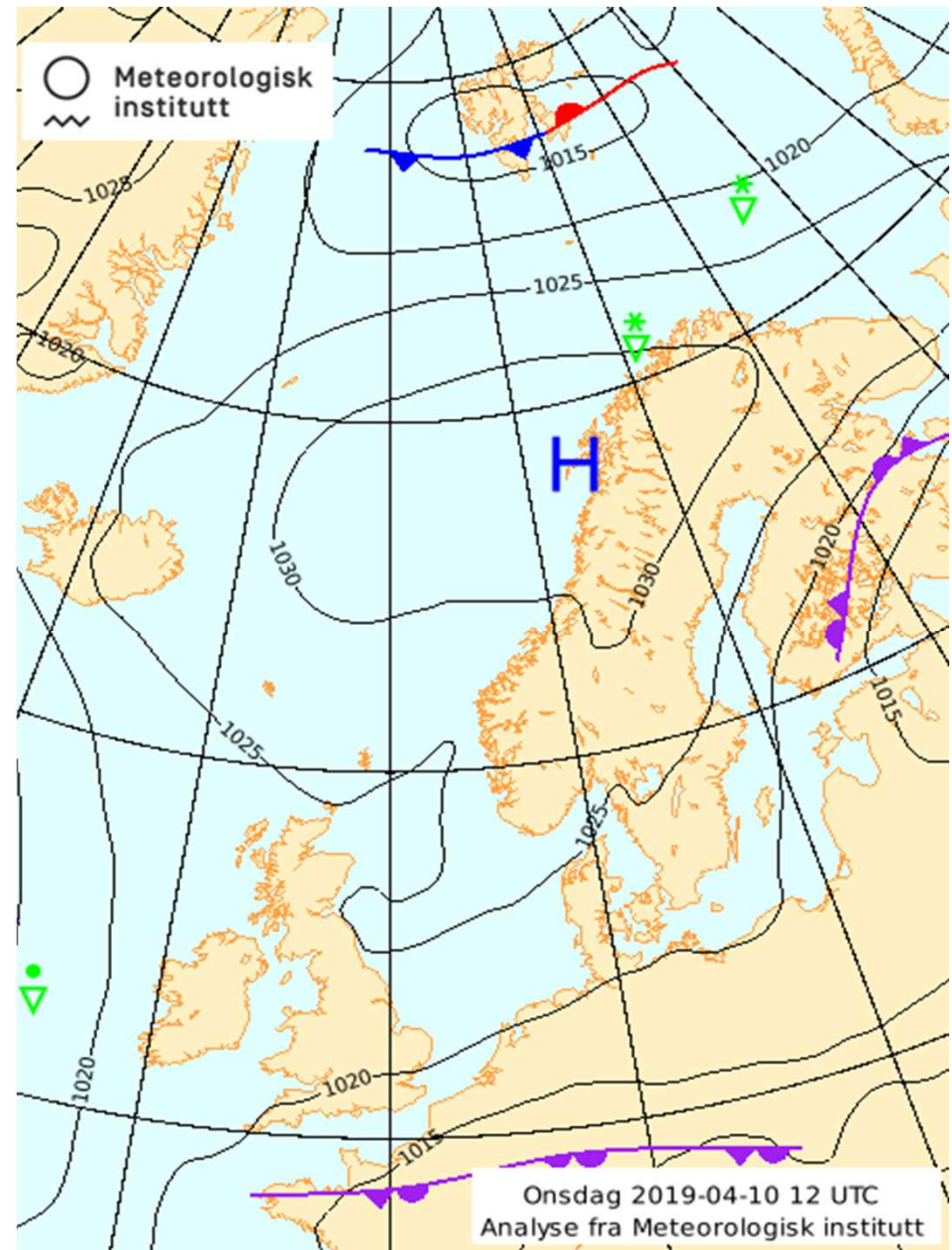
10/04/2019

Analysis Surface Pressure & Fronts (met.no)

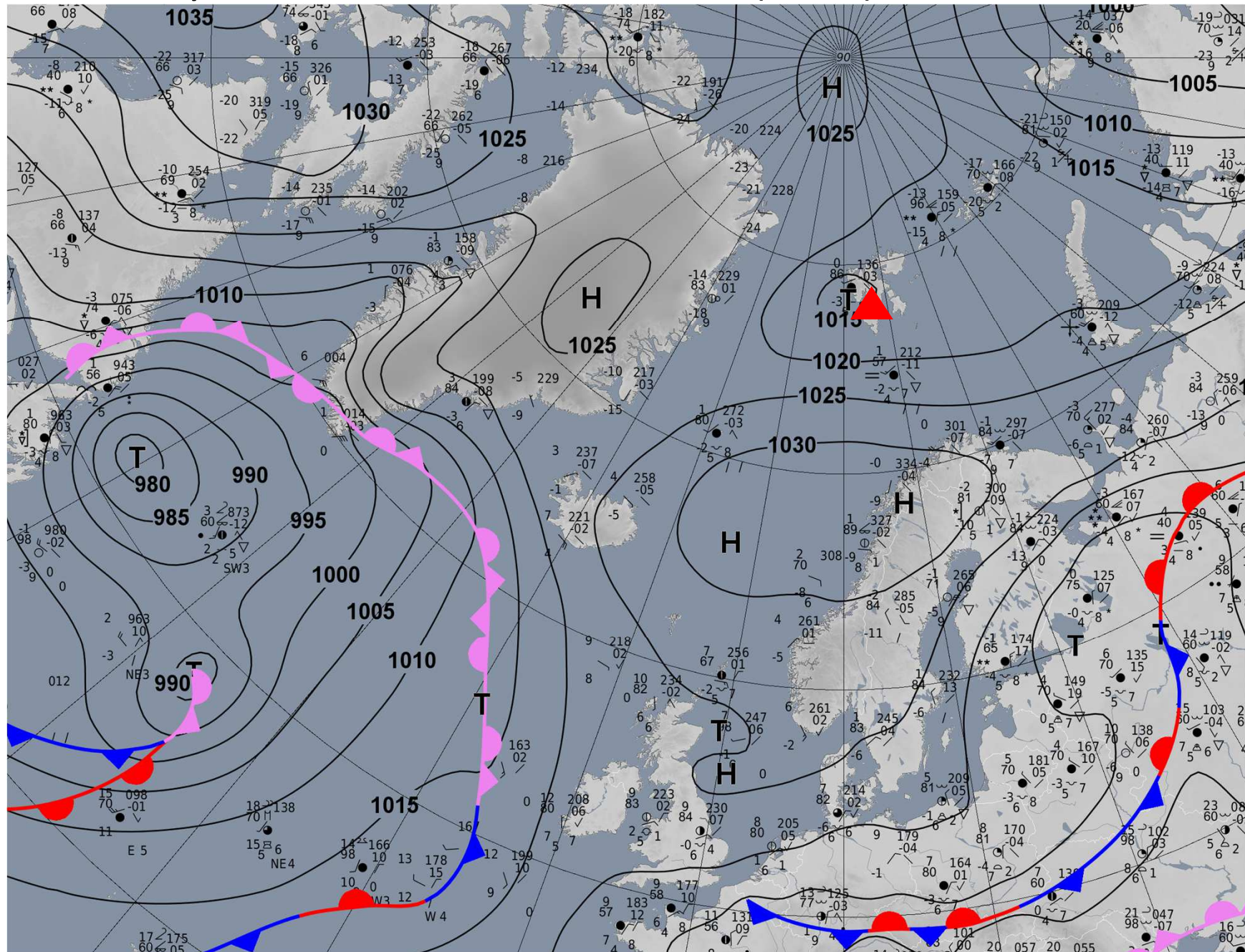
Analysis: 10/04, 06 UTC



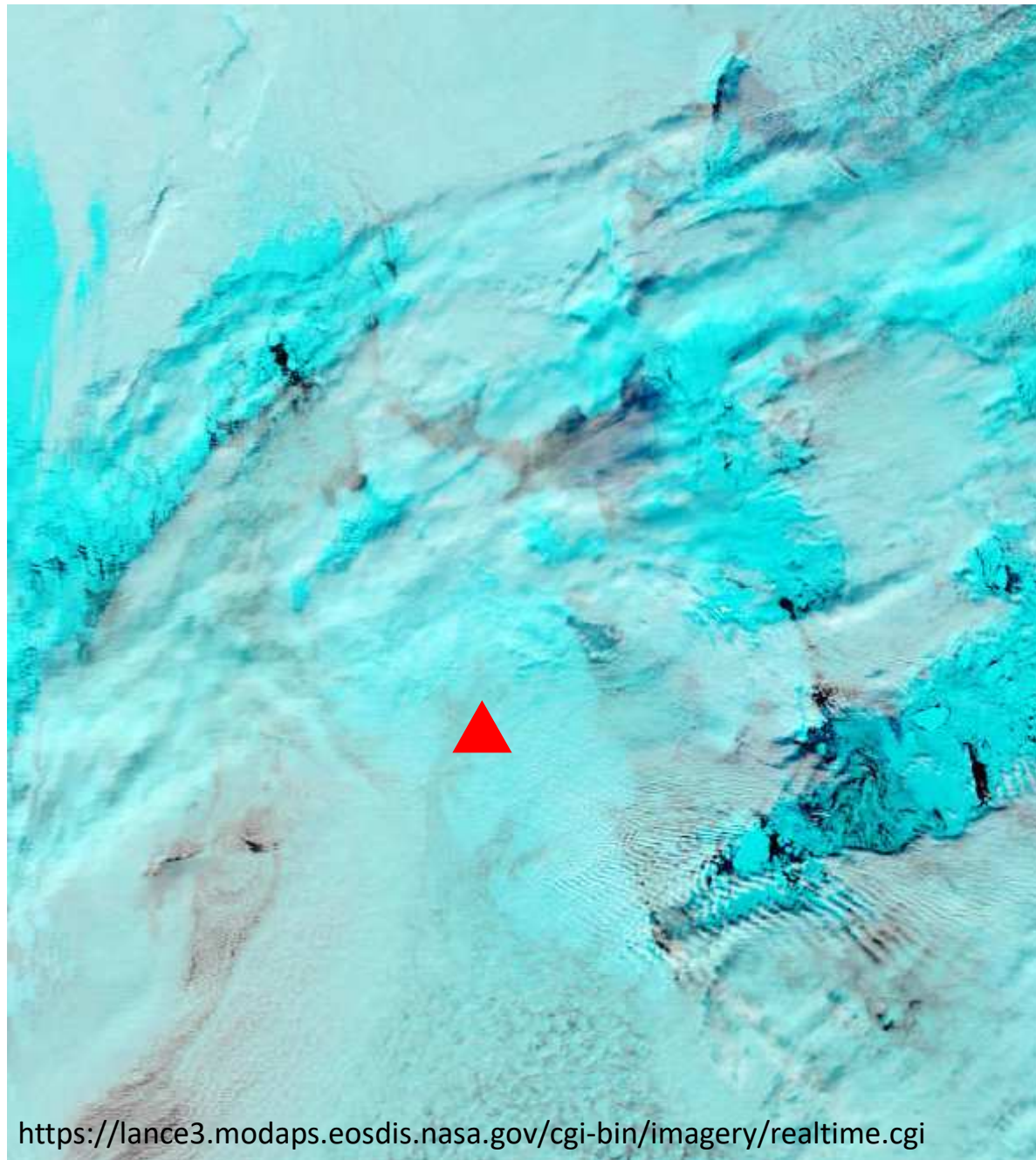
Analysis: 10/04, 12 UTC



Analysis Surface Pressure & Fronts (DWD) 10/04, 12 UTC



Satellite picture Terra MODIS 10/04, 11:20 UTC



10/04/2019

<https://lance3.modaps.eosdis.nasa.gov/cgi-bin/imagery/realtime.cgi>

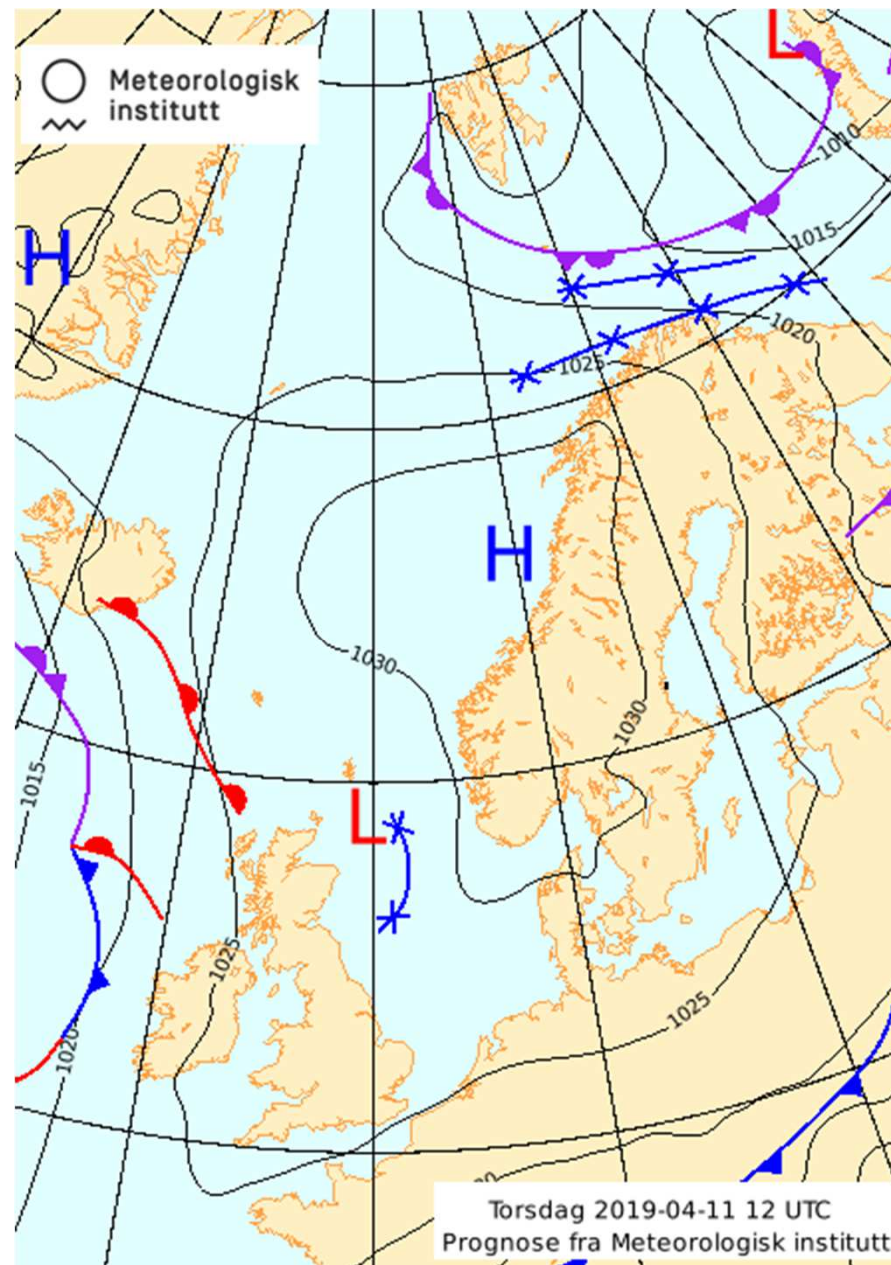
Latest METAR & TAF – 10/04

METAR: ENSB 101450Z 11003KT 9999 -FZRA SCT012 BKN030 M01/M02
Q1013 RMK WIND 1400FT 29003KT

TAF: ENSB 1012/1112 22010KT 9999 FEW010 BKN020
PROB40 TEMPO 1012/1015 4000 FZDZ -SHSN SCT008 BKN012
TEMPO 1012/1018 VRB05KT BECMG 1015/1018 12008KT

Thursday, 11/04/2019

Predicted Surface Pressure & Fronts (met.no) 11/04, 12 UTC

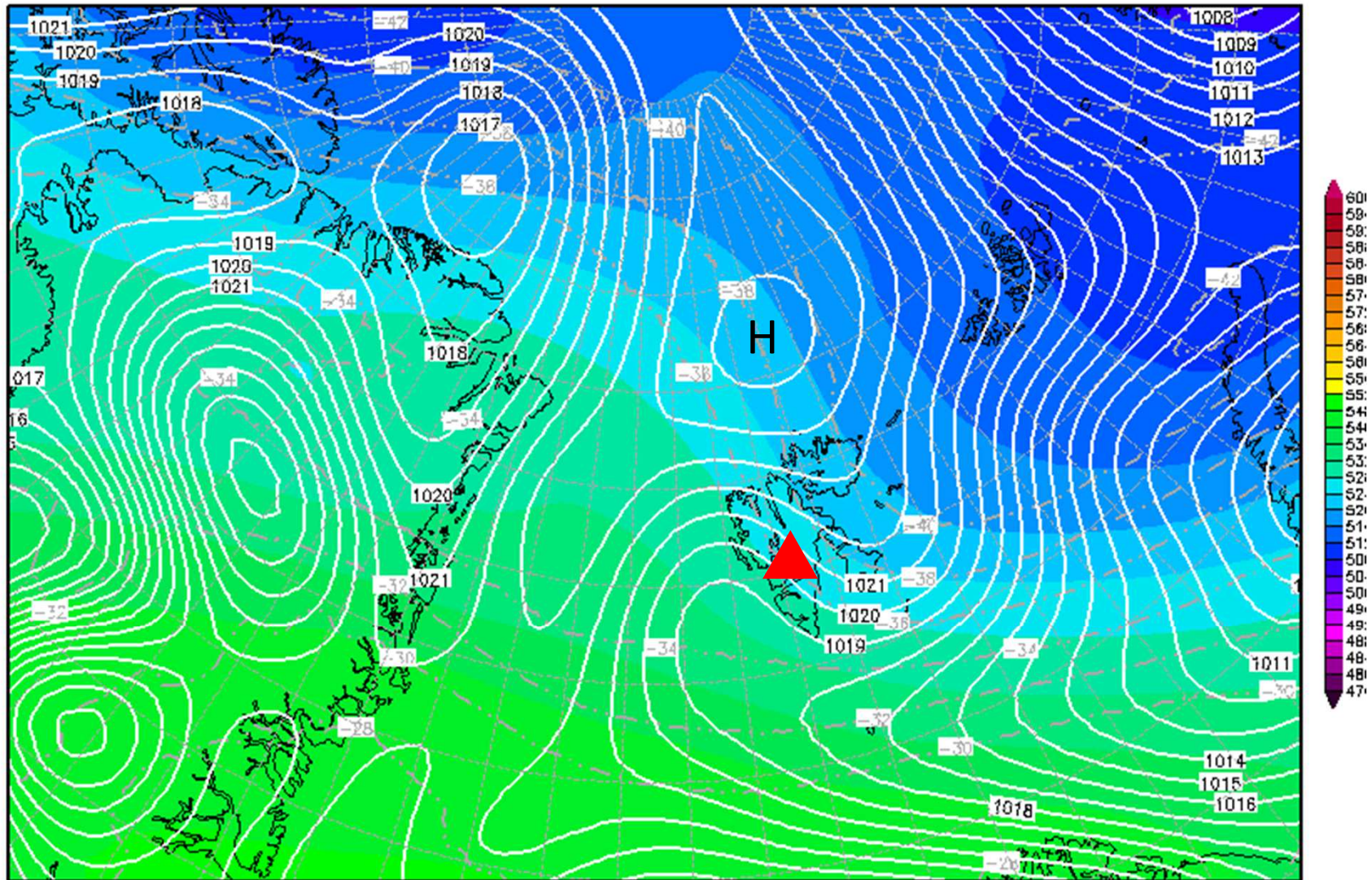


500hPa & Surface Pressure 11/04, 12 UTC

Init : Wed,10APR2019 12Z

Valid: Thu,11APR2019 12Z

500 hPa Geopot.(gpdm), T (C) und Bodendr. (hPa)

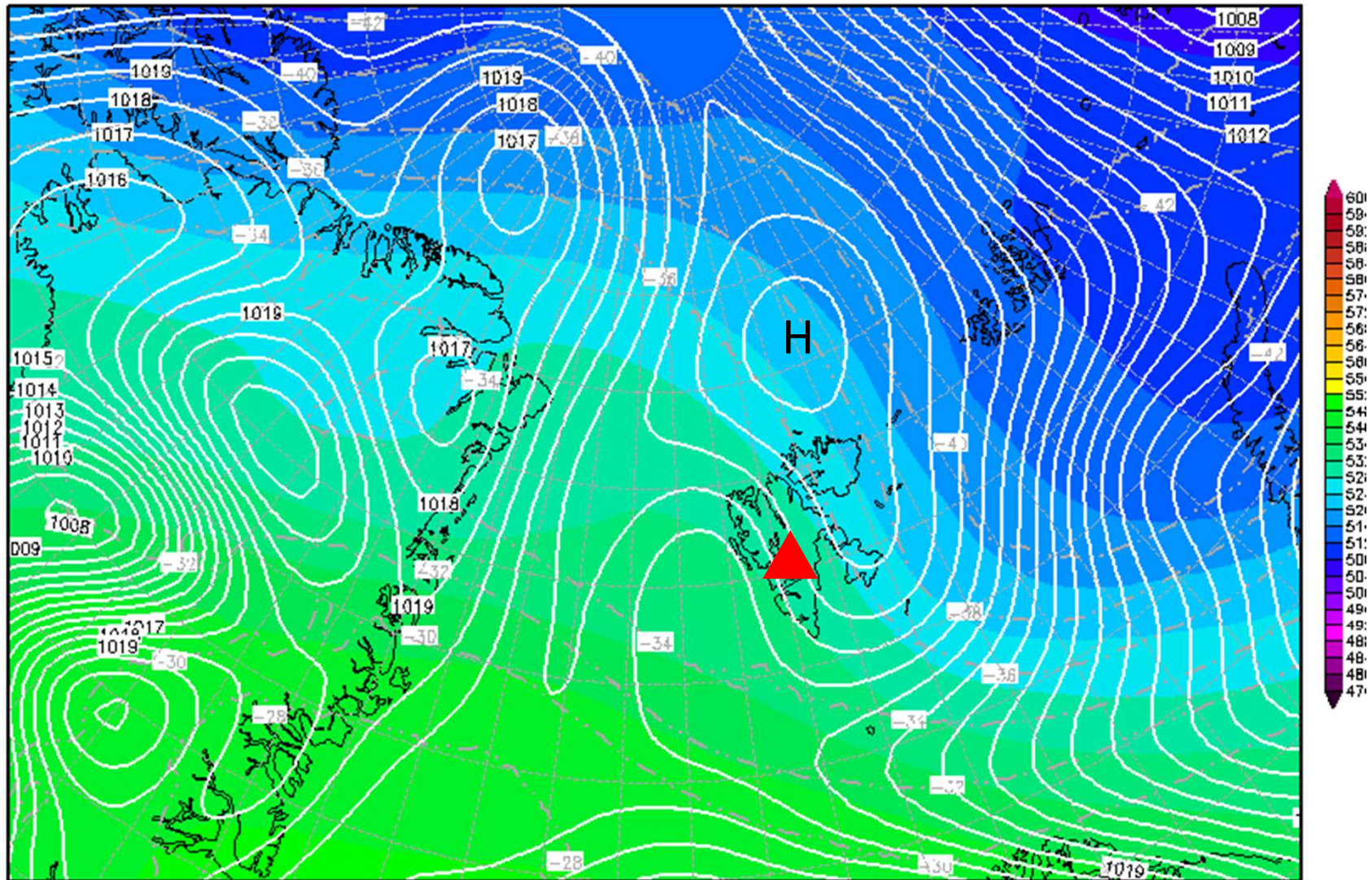


500hPa & Surface Pressure 11/04, 18 UTC

Init : Wed, 10 APR 2019 12Z

Valid: Thu, 11 APR 2019 18Z

500 hPa Geopot.(gpdm), T (C) und Bodendr. (hPa)

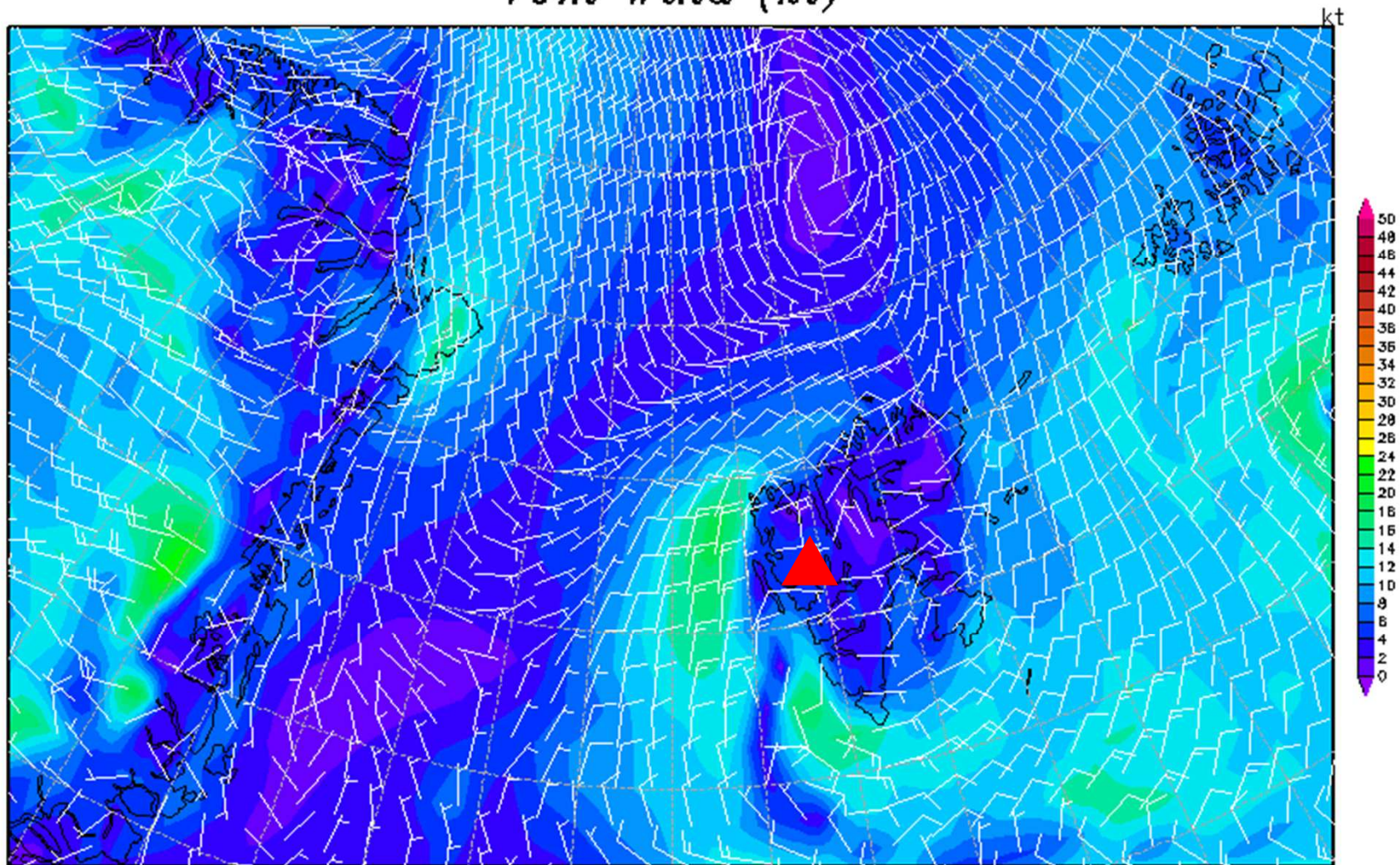


10m Wind – GFS 11/04, 12 UTC

Init : Wed,10APR2019 12Z

Valid: Thu,11APR2019 12Z

10m Wind (kt)



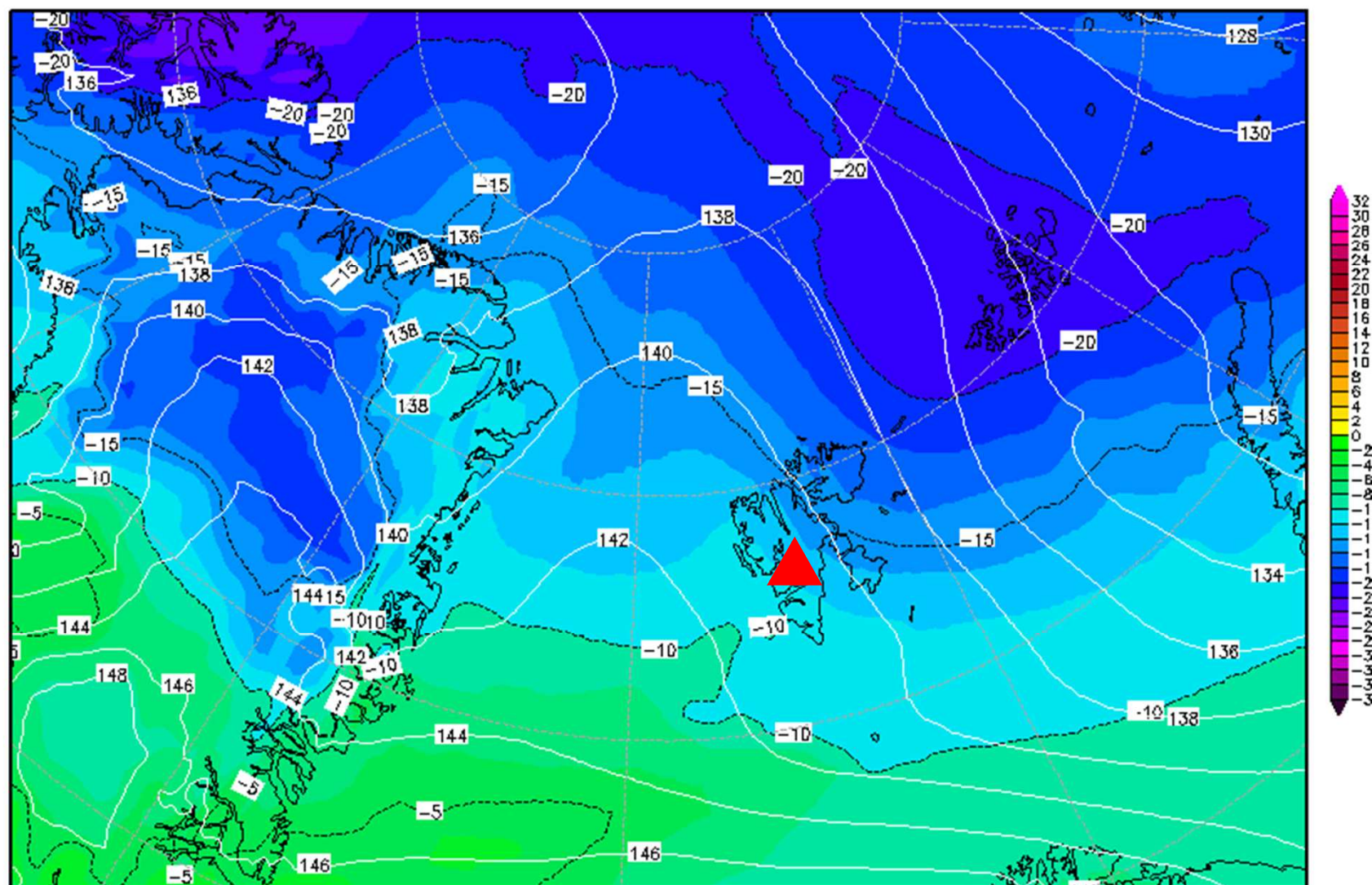
Daten: GFS-Modell des amerikanischen Wetterdienstes
(C) Wetterzentrale
www.wetterzentrale.de

850hPa & Temperature 11/04, 12 UTC

Init : Wed,10APR2019 12Z

Valid: Thu,11APR2019 12Z

850 hPa Geopot. (gpdm) und Temperatur (Grad C)

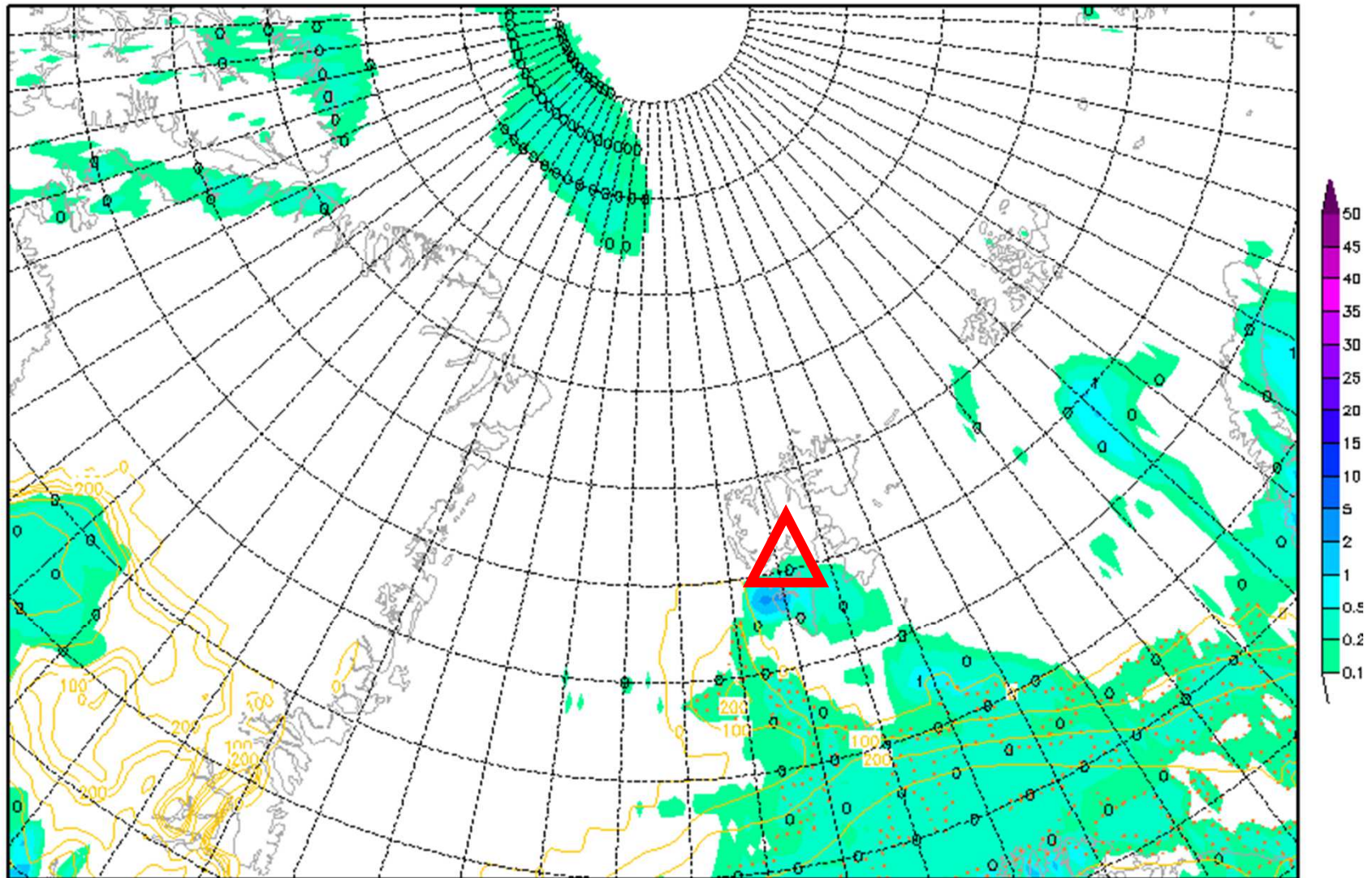


3h Prec. – GFS 11/04, 09-12 UTC

Init : Wed, 10 APR 2019 12Z

Valid: Thu, 11 APR 2019 12Z

3h-Nds in mm (rot=konvektiv) + 0°-Grenze in m



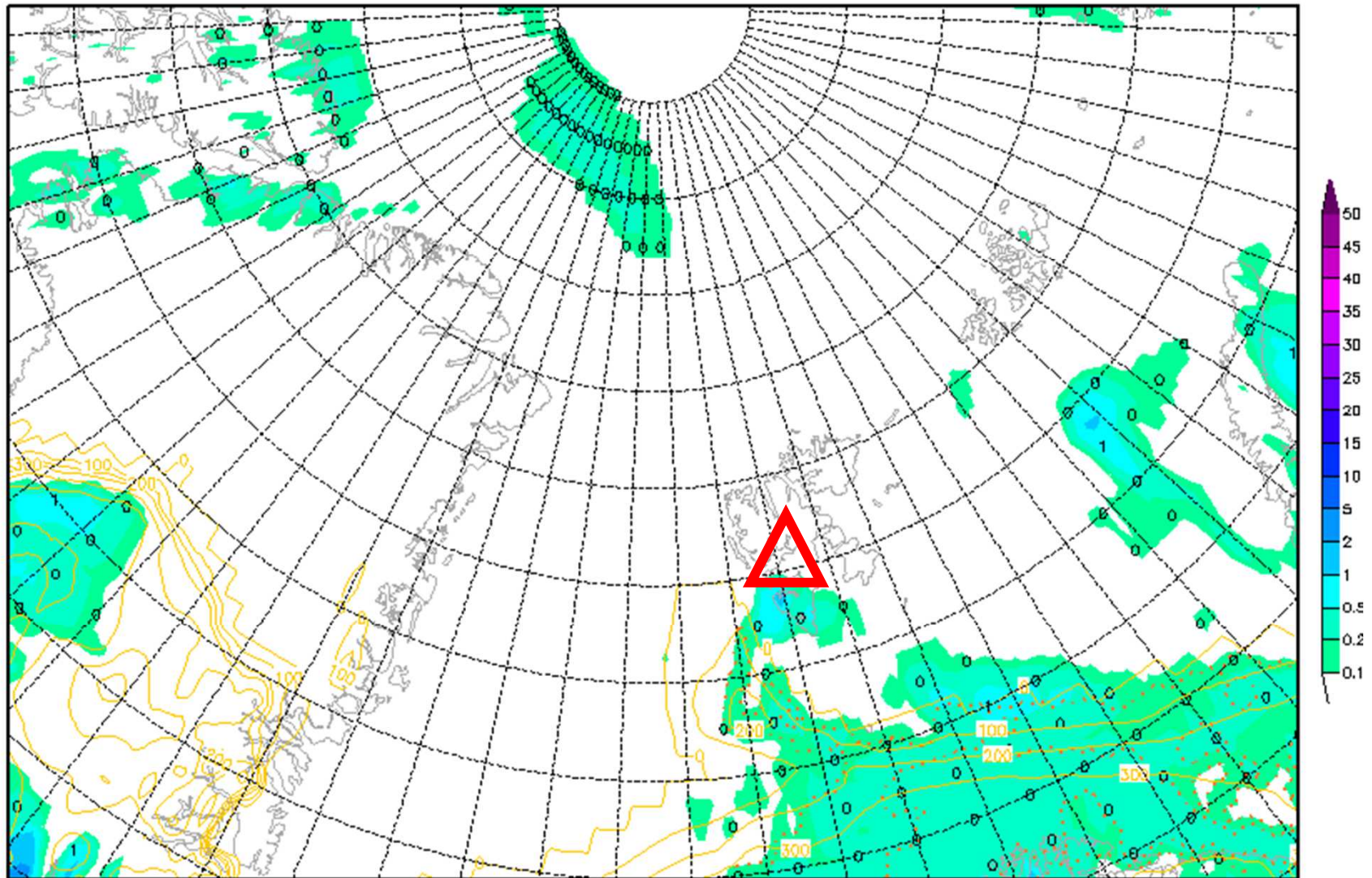
Daten: GFS-Modell des amerikanischen Wetterdienstes
(C) Wetterzentrale
www.wetterzentrale.de

3h Prec. – GFS 11/04, 12-15 UTC

Init : Wed, 10 APR 2019 12Z

Valid: Thu, 11 APR 2019 15Z

3h-Nds in mm (rot=konvektiv) + 0°-Grenze in m



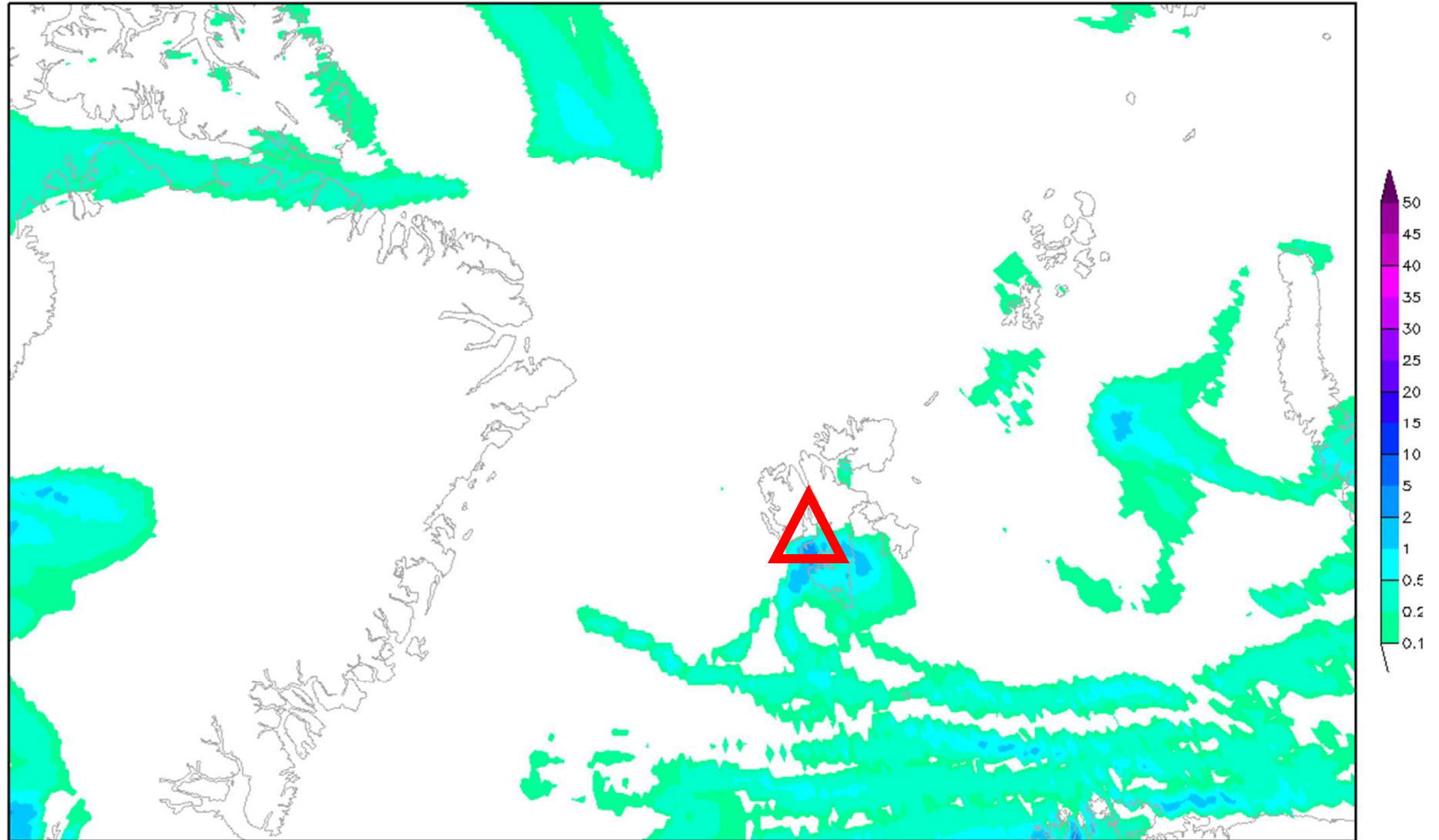
Daten: GFS-Modell des amerikanischen Wetterdienstes
(C) Wetterzentrale
www.wetterzentrale.de

3h Prec. – ICON 11/04, 12-15 UTC

Init : Wed,10APR2019 06Z

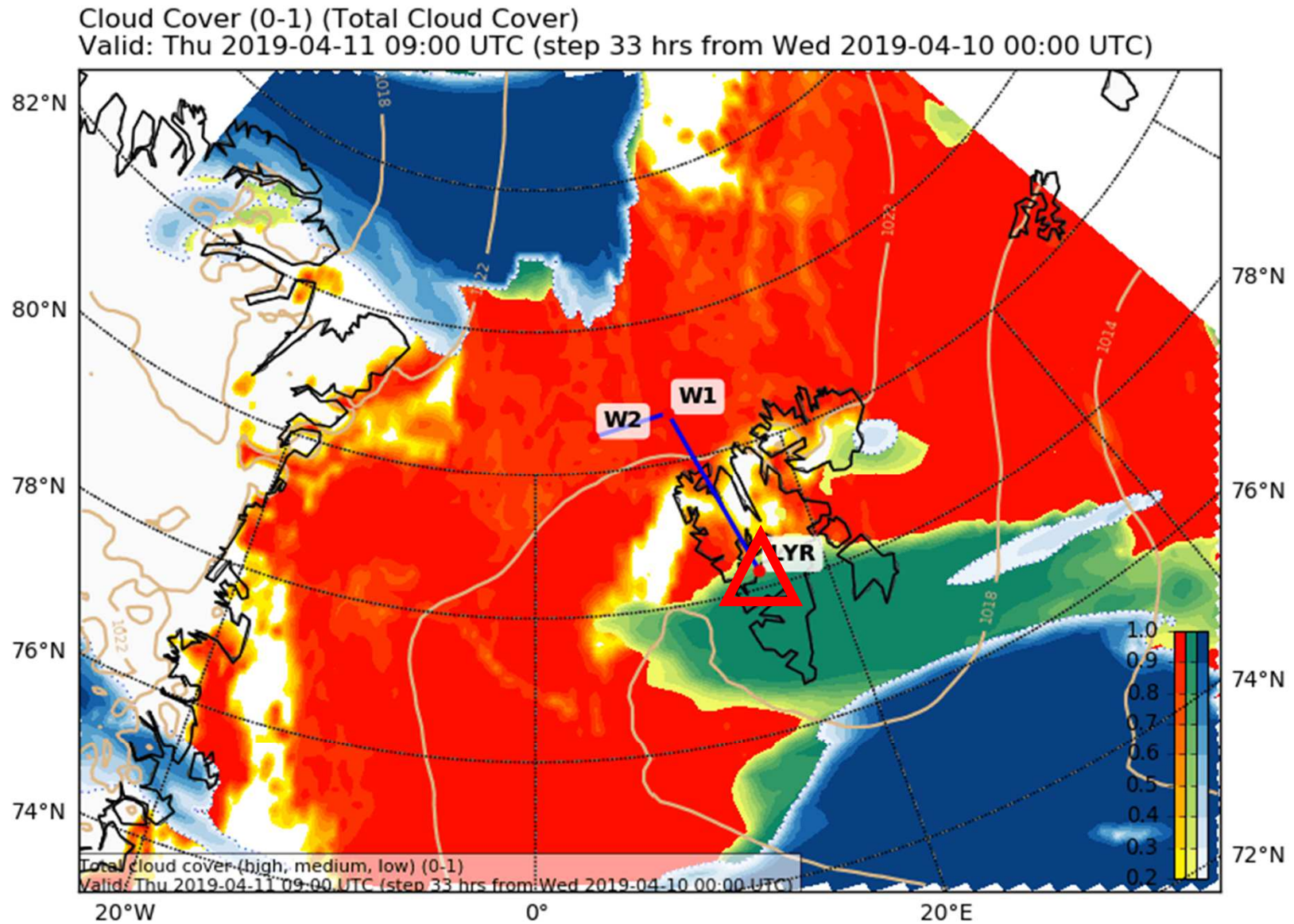
Valid: Thu,11APR2019 15Z

3h-Niederschlag in mm

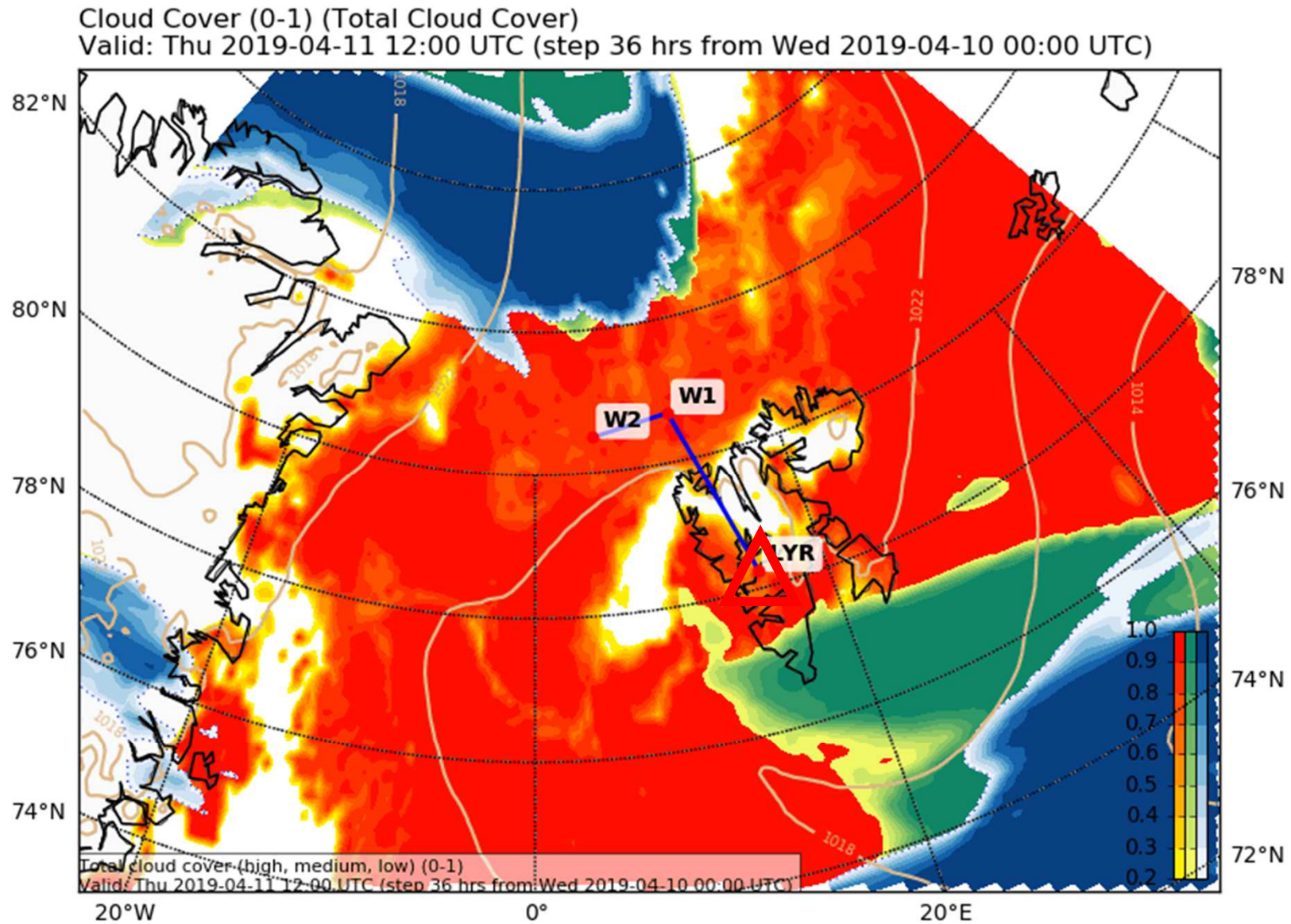


Daten: DWD ICON (0.125°)
(C) Wetterzentrale
www.wetterzentrale.de

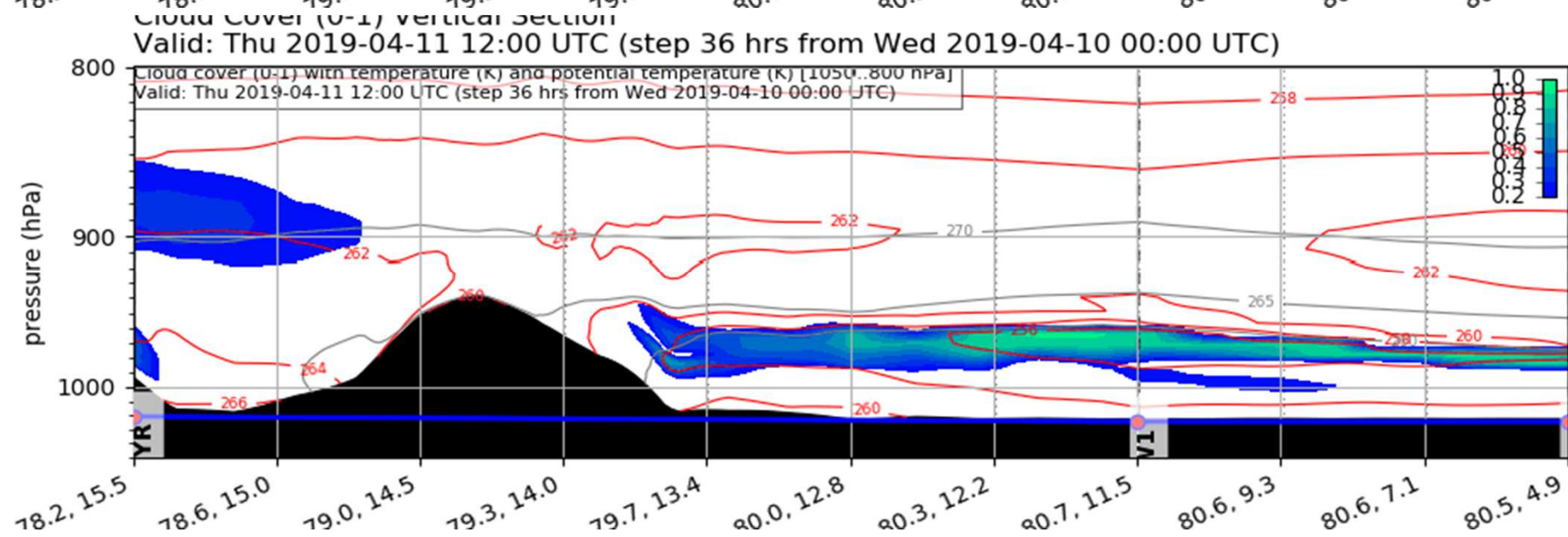
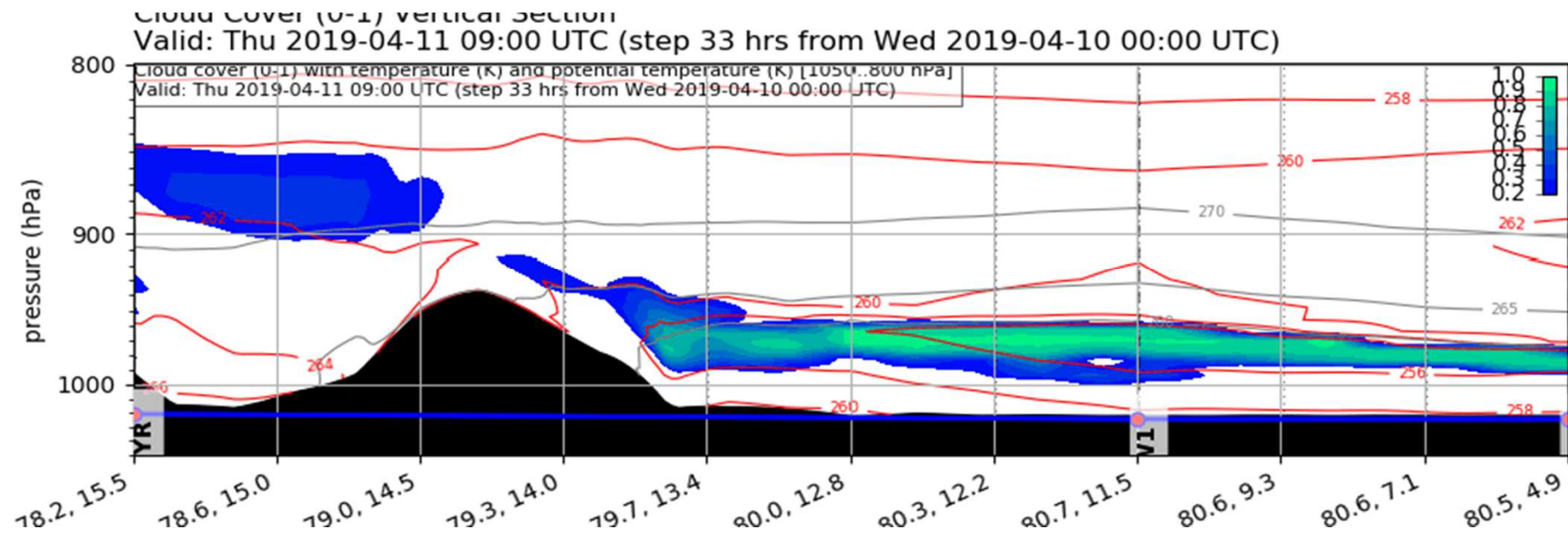
Total cloud cover – ECMWF 11/04, 09 UTC



Total cloud cover – ECMWF 11/04, 12 UTC

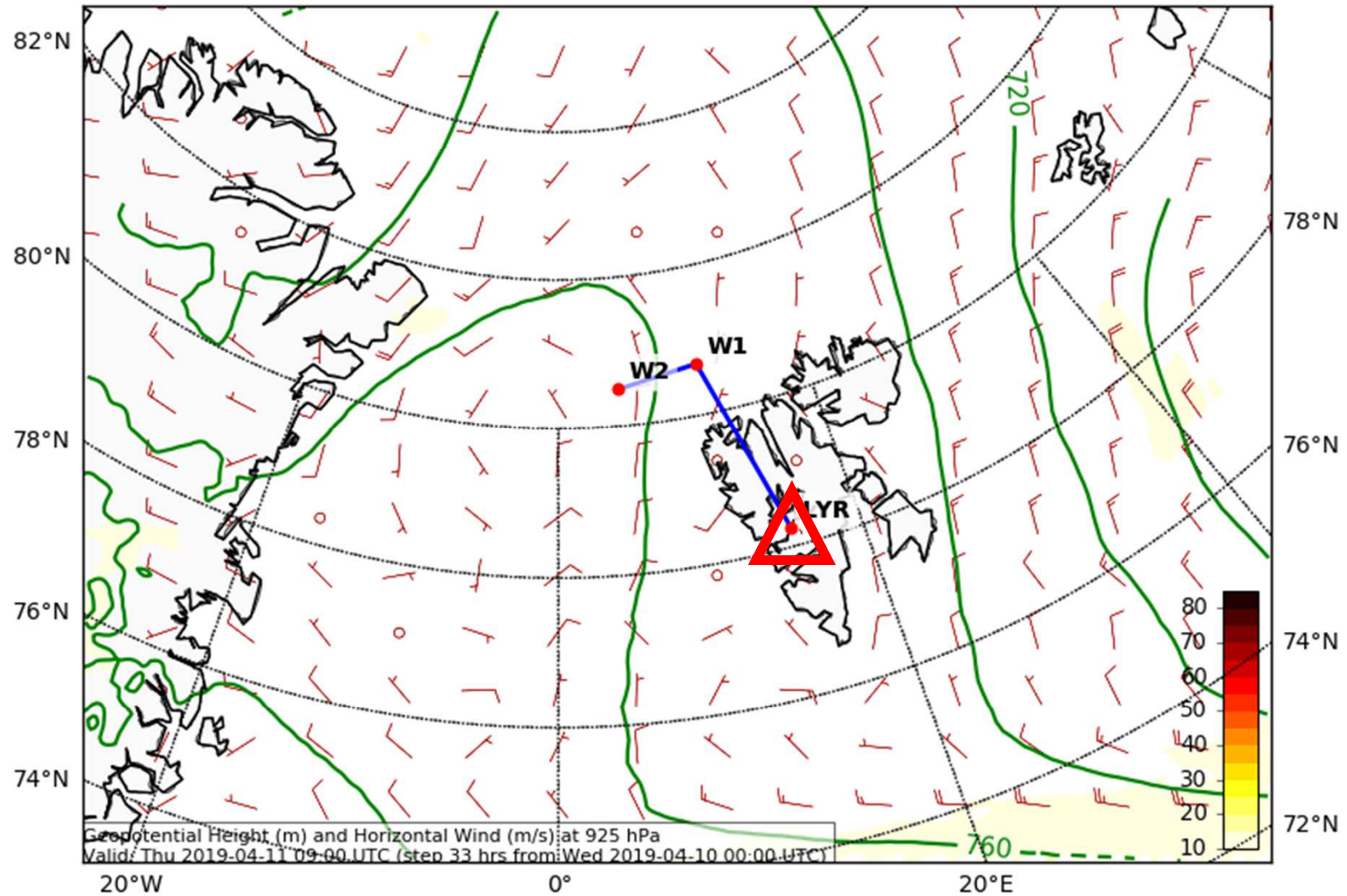


Cloud cover up to 800hPa – ECMWF 11/04, 09 & 12Z



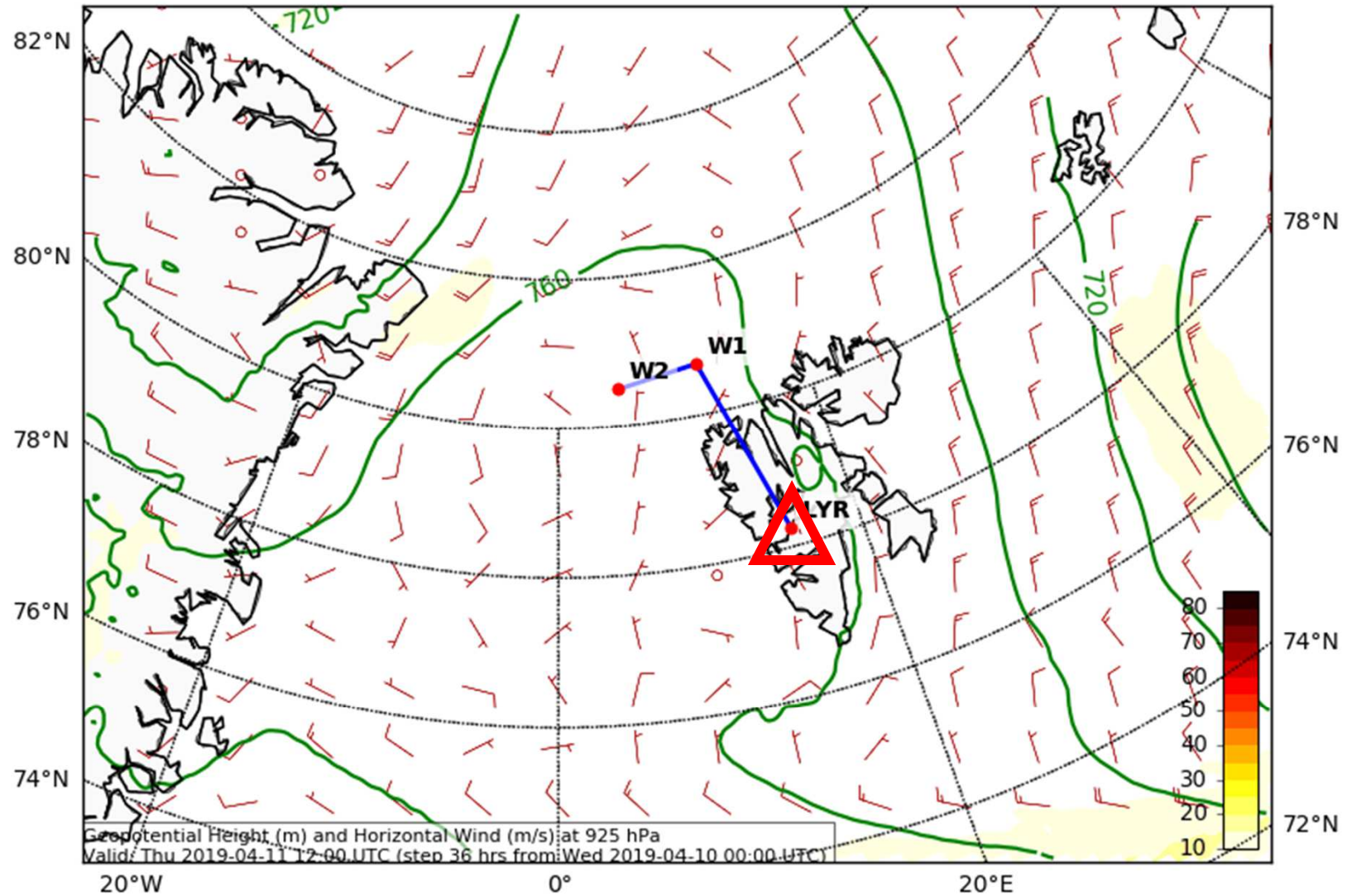
Wind at 950hPa – ECMWF 11/04, 09 UTC

Geopotential Height (m) and Horizontal Wind (m/s) (Wind Speed 10-85 m/s) at 925 (hPa)
Valid: Thu 2019-04-11 09:00 UTC (step 33 hrs from Wed 2019-04-10 00:00 UTC)



Wind at 950hPa – ECMWF 11/04, 12 UTC

Geopotential Height (m) and Horizontal Wind (m/s) (Wind Speed 10-85 m/s) at 925 (hPa)
Valid: Thu 2019-04-11 12:00 UTC (step 36 hrs from Wed 2019-04-10 00:00 UTC)



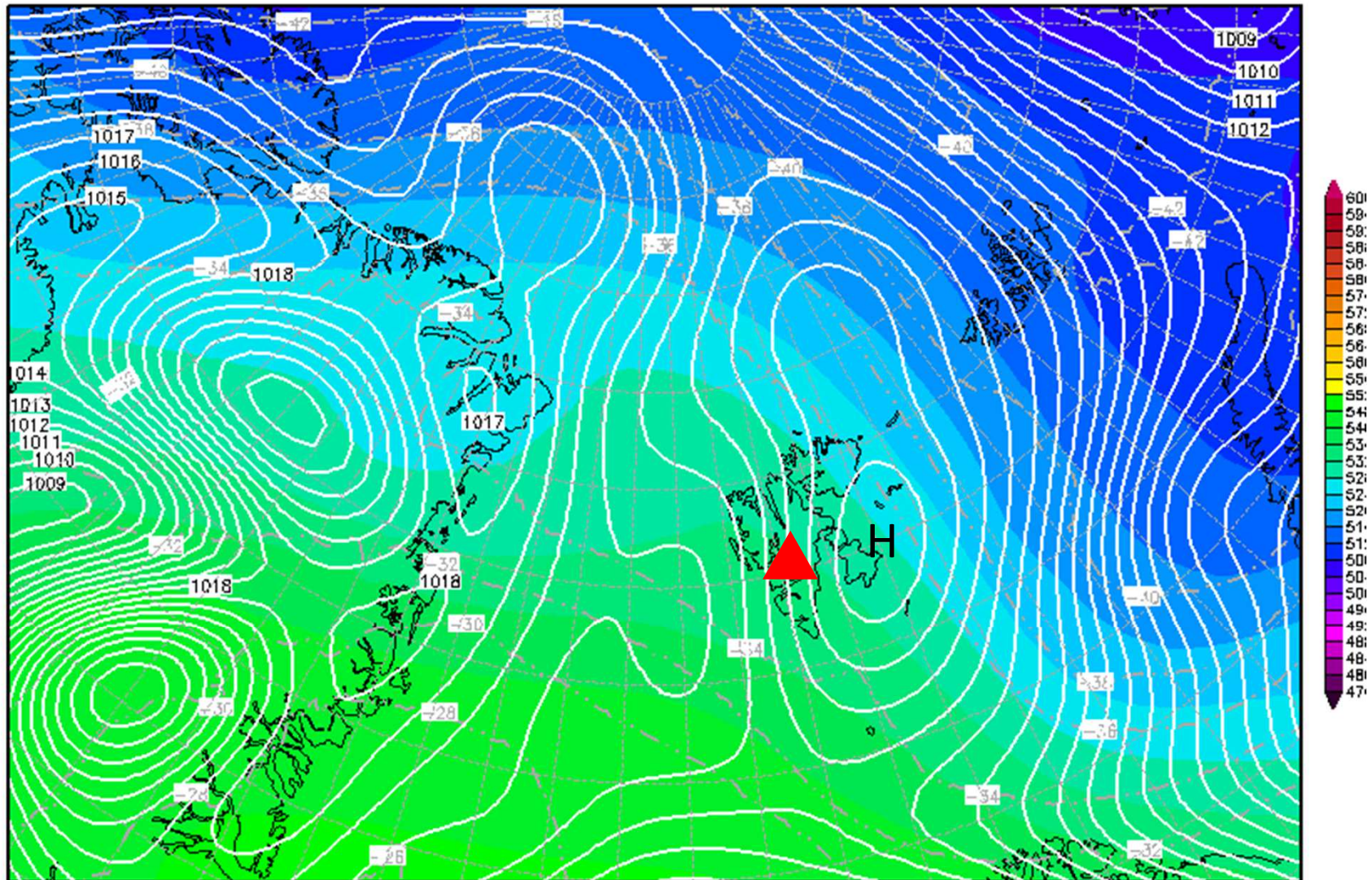
Friday, 12/04/19

500hPa & Surface Pressure 12/04, 00 UTC

Init : Wed,10APR2019 12Z

Valid: Fri,12APR2019 00Z

500 hPa Geopot.(gpdm), T (C) und Bodendr. (hPa)

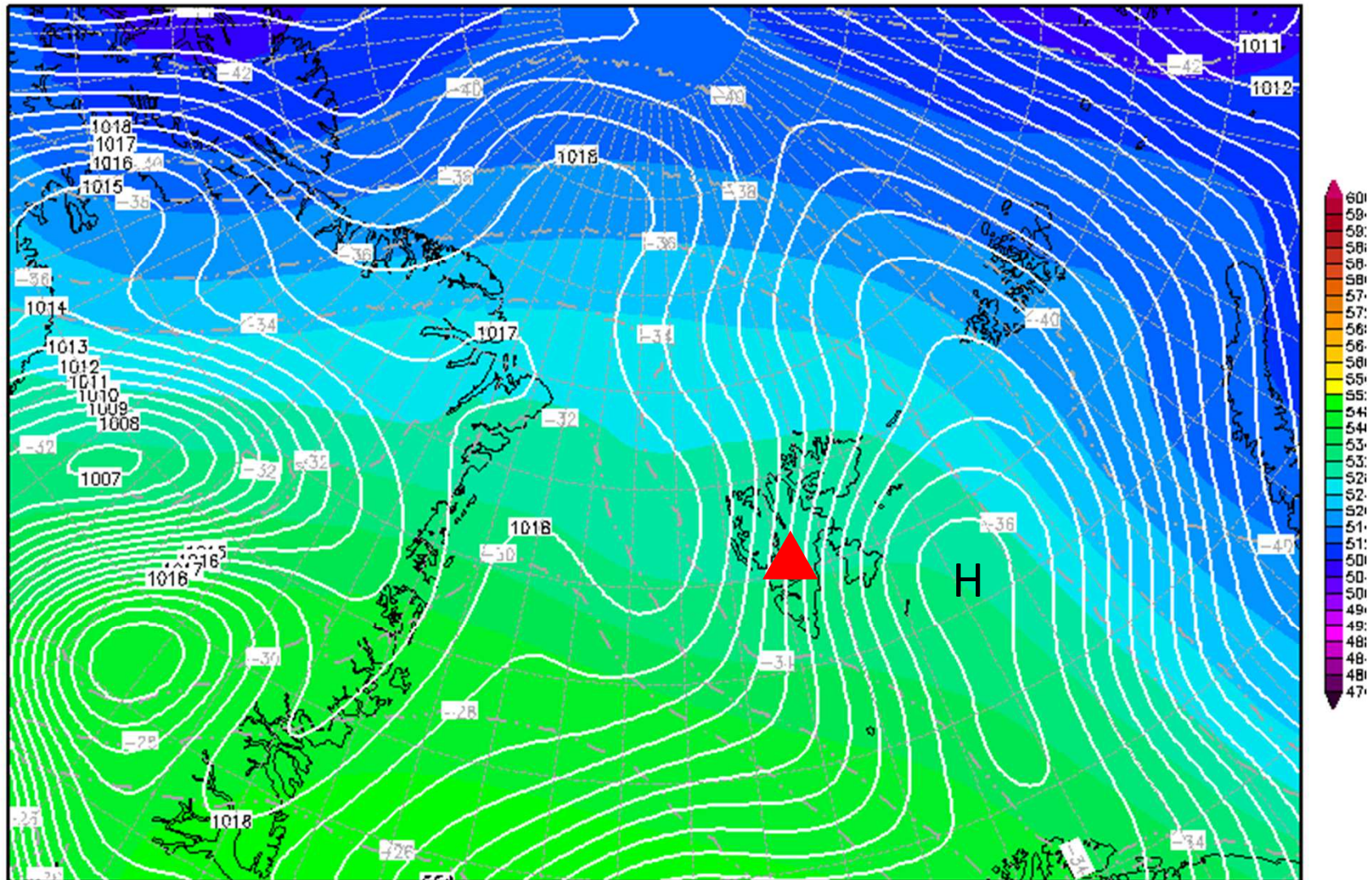


500hPa & Surface Pressure 12/04, 12 UTC

Init : Wed,10APR2019 06Z

Valid: Fri,12APR2019 12Z

500 hPa Geopot.(gpdm), T (C) und Bodendr. (hPa)

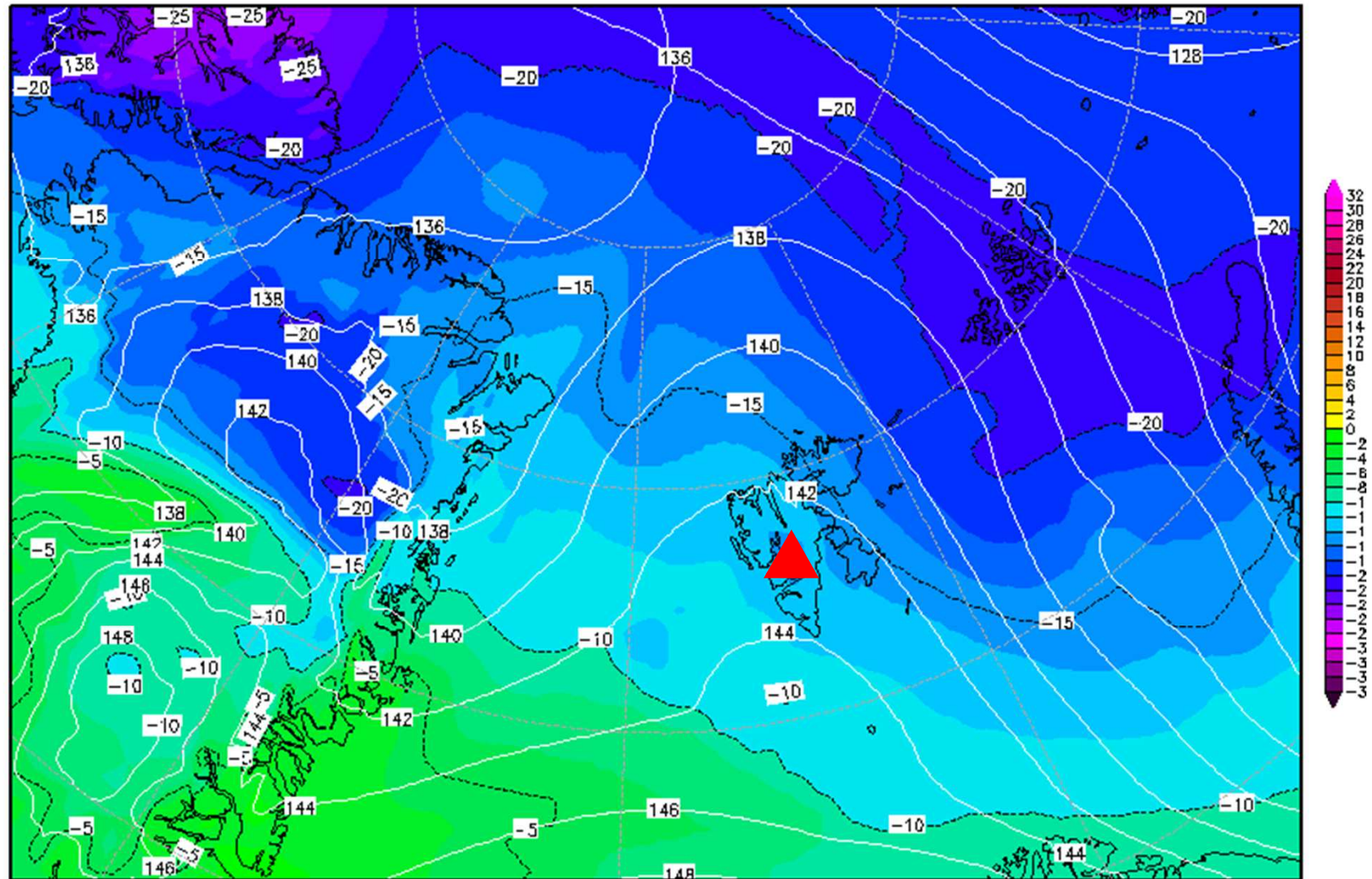


850hPa & Temperature 12/04, 00 UTC

Init : Wed,10APR2019 06Z

Valid: Fri,12APR2019 00Z

850 hPa Geopot. (gpdm) und Temperatur (Grad C)

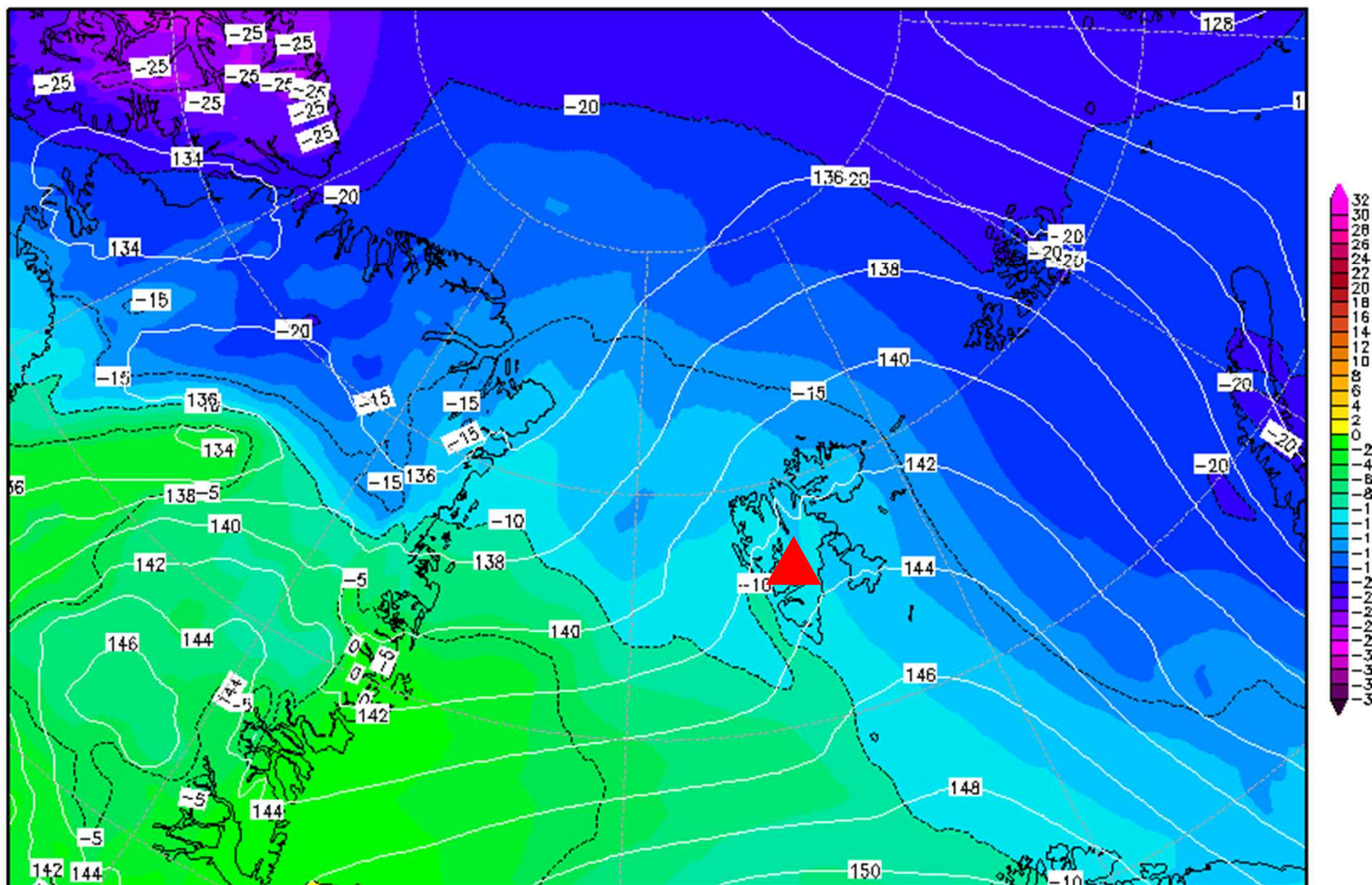


850hPa & Temperature 12/04, 12 UTC

Init : Wed,10APR2019 06Z

Valid: Fri,12APR2019 12Z

850 hPa Geopot. (gpdm) und Temperatur (Grad C)

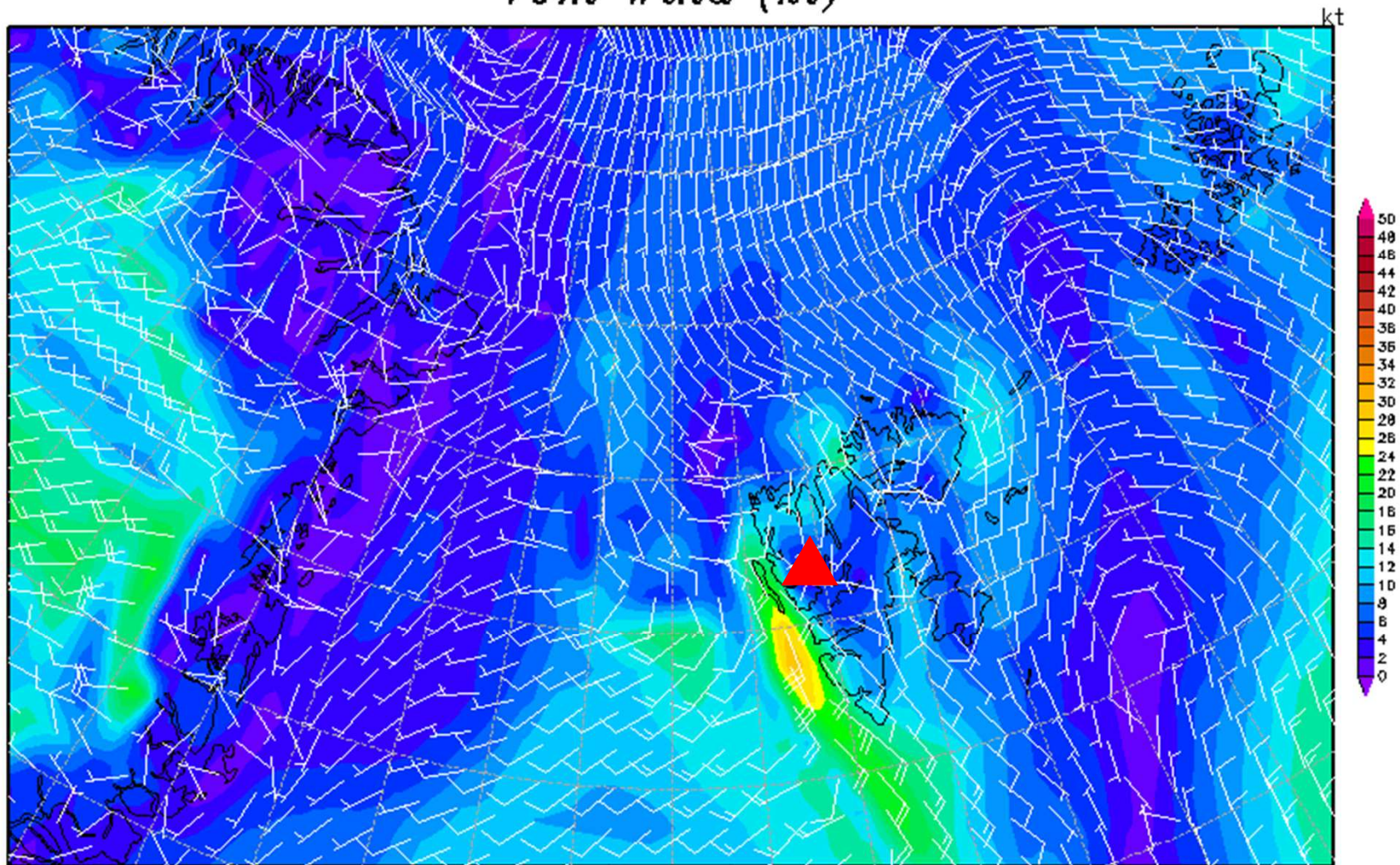


10m Wind – GFS 12/04, 12 UTC

Init : Wed,10APR2019 06Z

Valid: Fri,12APR2019 12Z

10m Wind (kt)



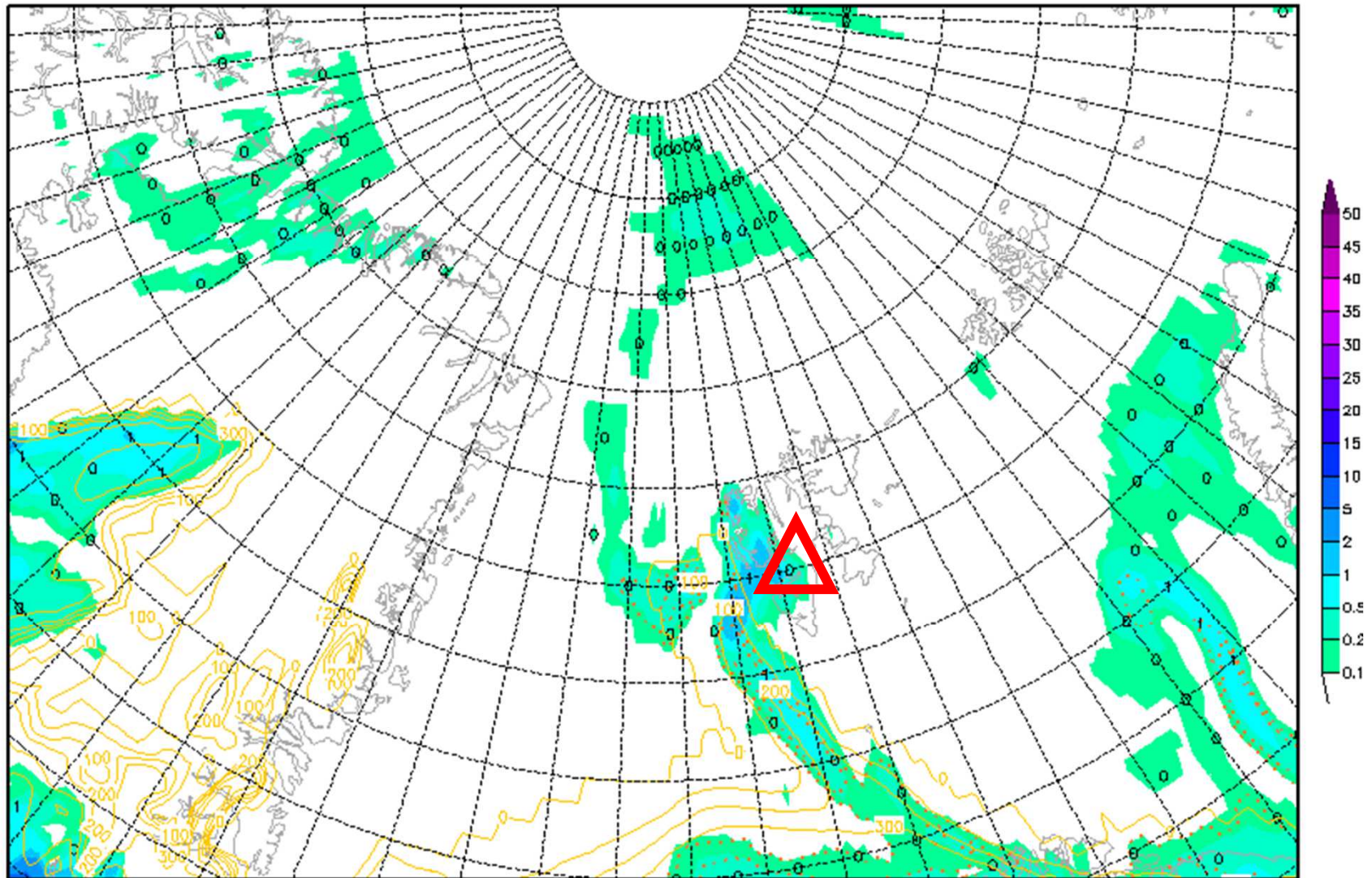
Daten: GFS-Modell des amerikanischen Wetterdienstes
(C) Wetterzentrale
www.wetterzentrale.de

3h Prec. – GFS 12/04, 06-09 UTC

Init : Wed, 10 APR 2019 06Z

Valid: Fri, 12 APR 2019 09Z

3h-Nds in mm (rot=konvektiv) + 0°-Grenze in m



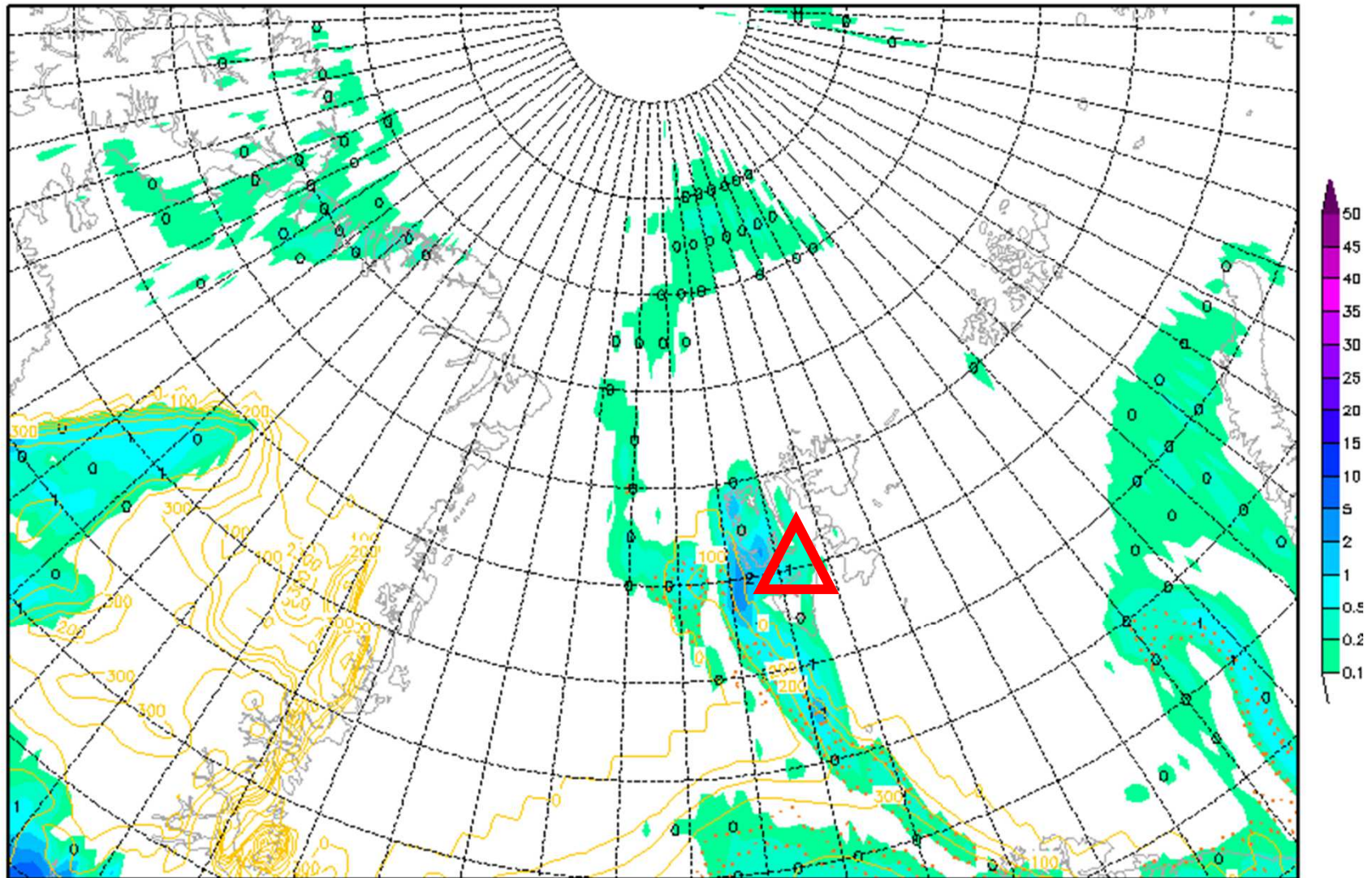
Daten: GFS-Modell des amerikanischen Wetterdienstes
(C) Wetterzentrale
www.wetterzentrale.de

3h Prec. – GFS 12/04, 09-12 UTC

Init : Wed, 10 APR 2019 06Z

Valid: Fri, 12 APR 2019 12Z

3h-Nds in mm (rot=konvektiv) + 0°-Grenze in m



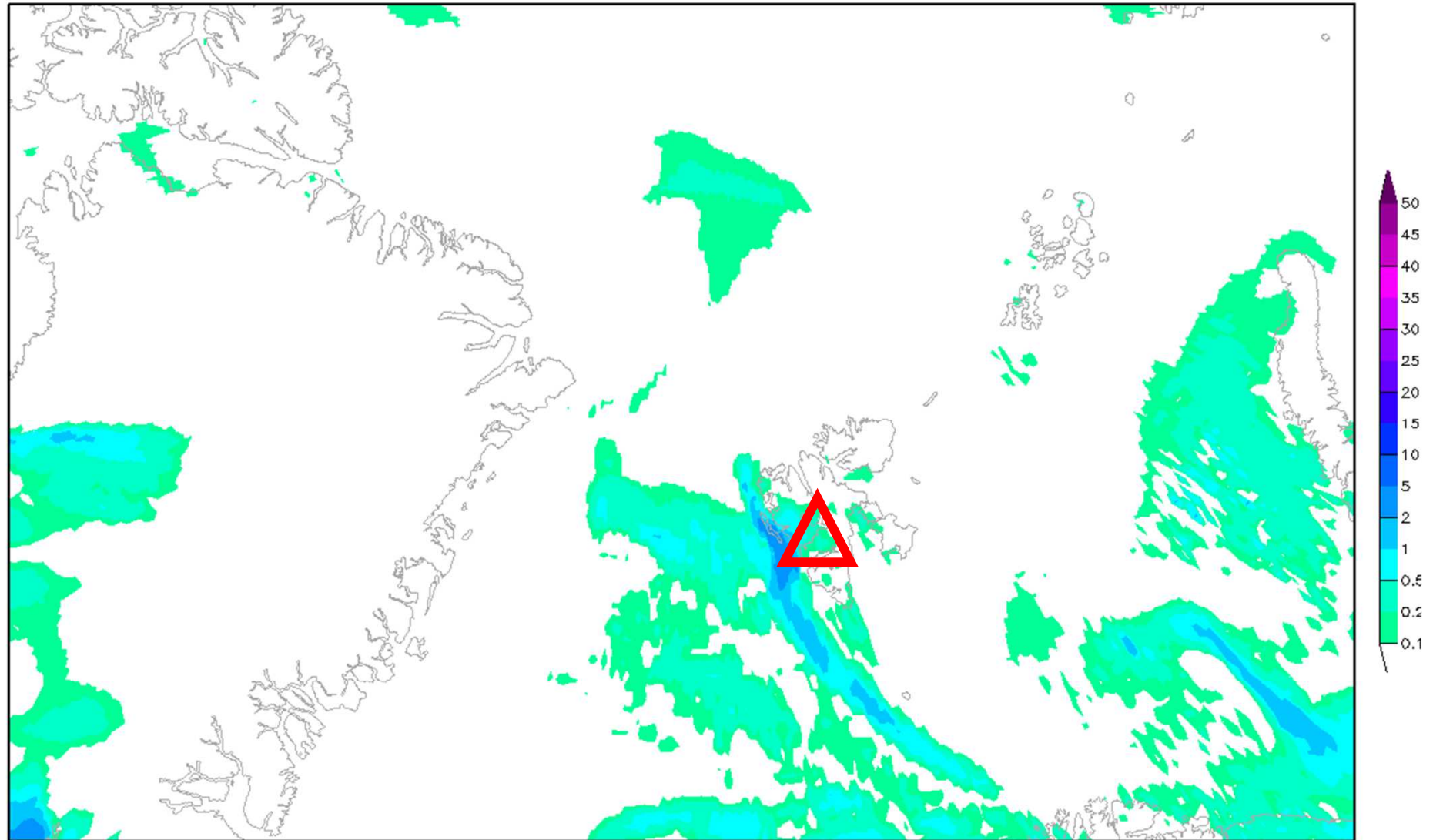
Daten: GFS-Modell des amerikanischen Wetterdienstes
(C) Wetterzentrale
www.wetterzentrale.de

3h Prec. – ICON 12/04, 09-12 UTC

Init : Wed,10APR2019 00Z

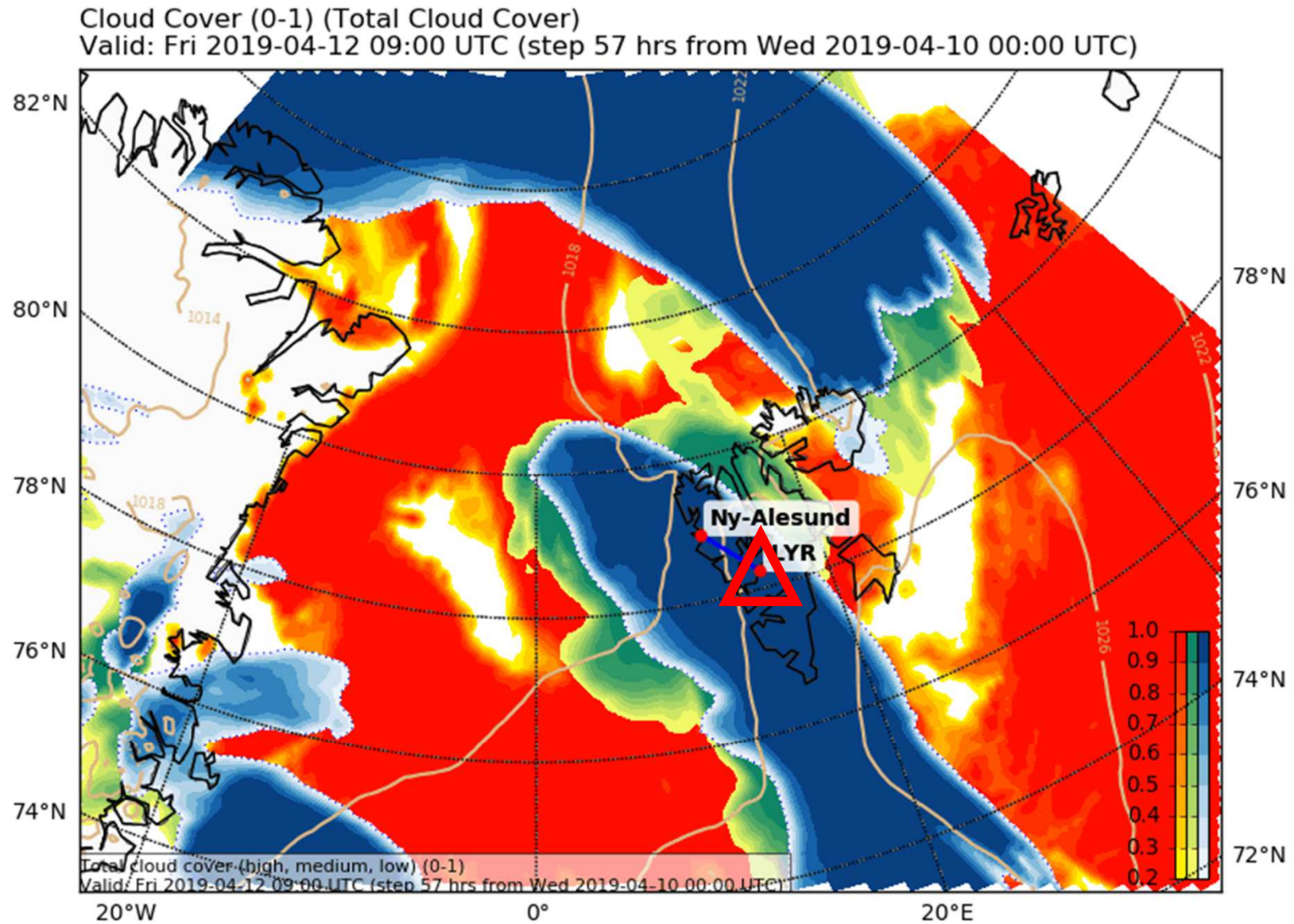
Valid: Fri,12APR2019 12Z

3h-Niederschlag in mm

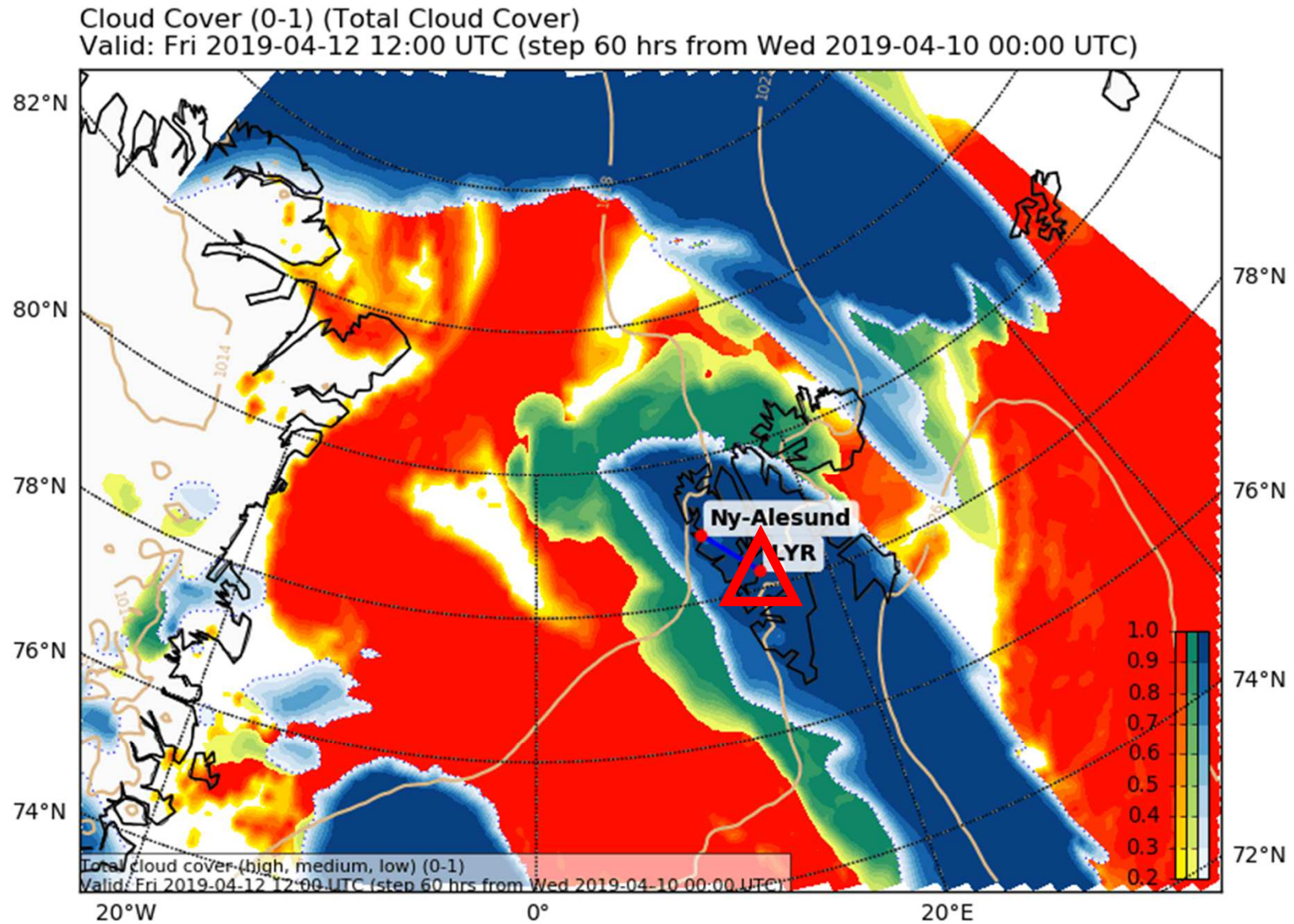


Daten: DWD ICON (0.125°)
(C) Wetterzentrale
www.wetterzentrale.de

Total cloud cover – ECMWF 12/04, 09 UTC

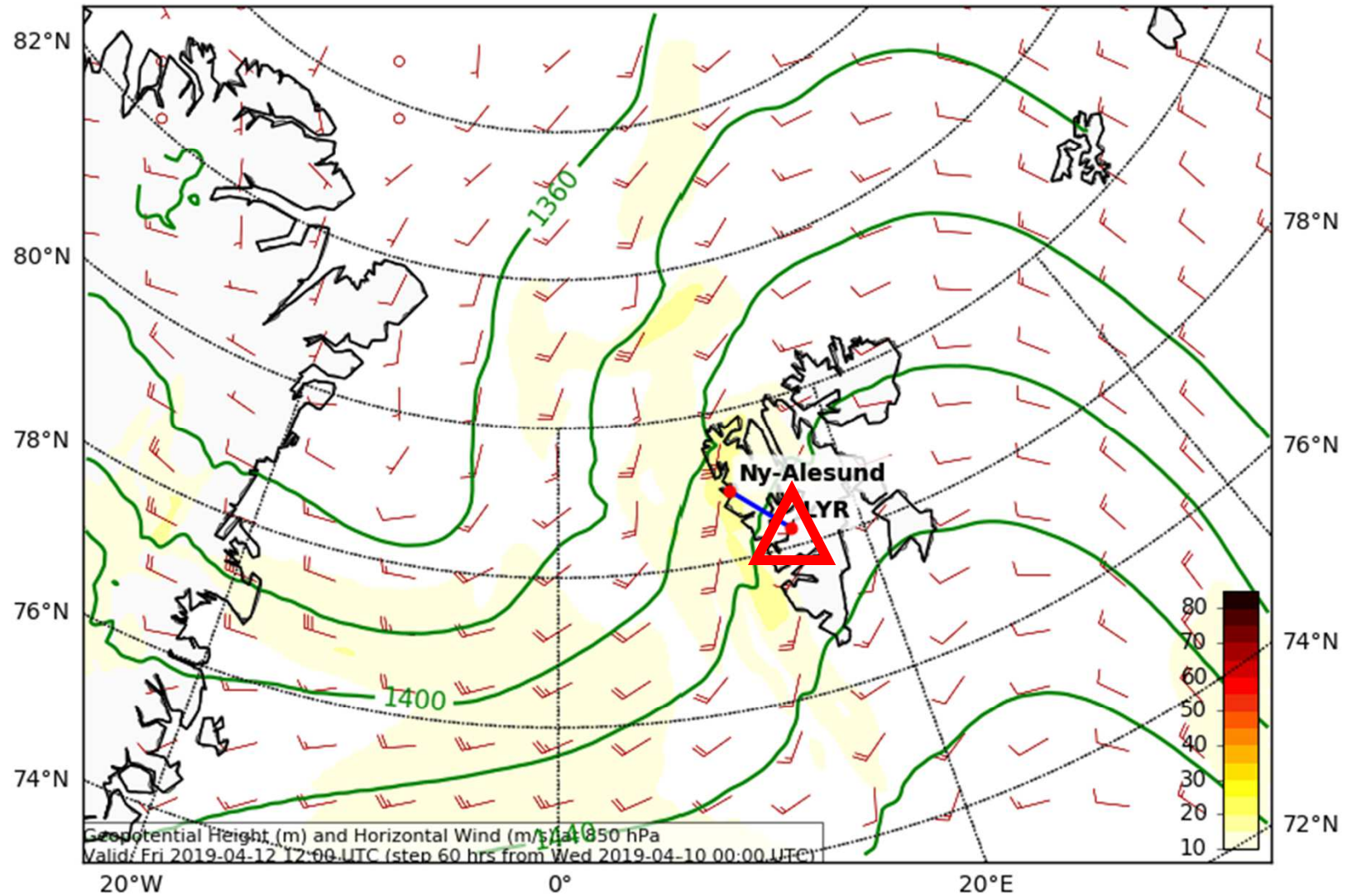


Total cloud cover – ECMWF 12/04, 12 UTC



Wind at 950hPa – ECMWF 12/04, 12 UTC

Geopotential Height (m) and Horizontal Wind (m/s) (Wind Speed 10-85 m/s) at 850 (hPa)
Valid: Fri 2019-04-12 12:00 UTC (step 60 hrs from Wed 2019-04-10 00:00 UTC)



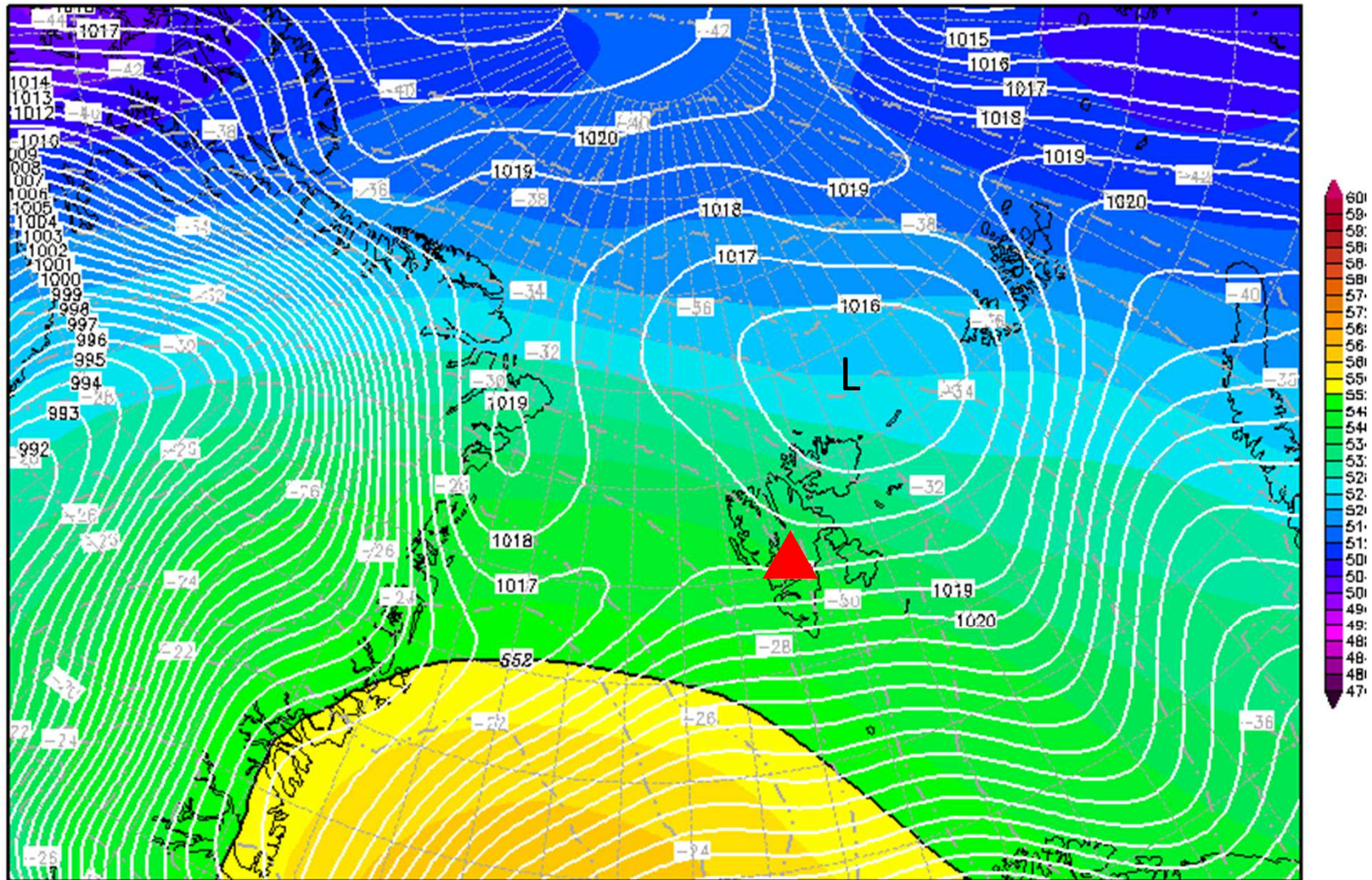
Saturday, 13/04/19

500hPa & Surface Pressure 13/04, 12 UTC

Init : Wed,10APR2019 06Z

Valid: Sat,13APR2019 12Z

500 hPa Geopot.(gpdm), T (C) und Bodendr. (hPa)

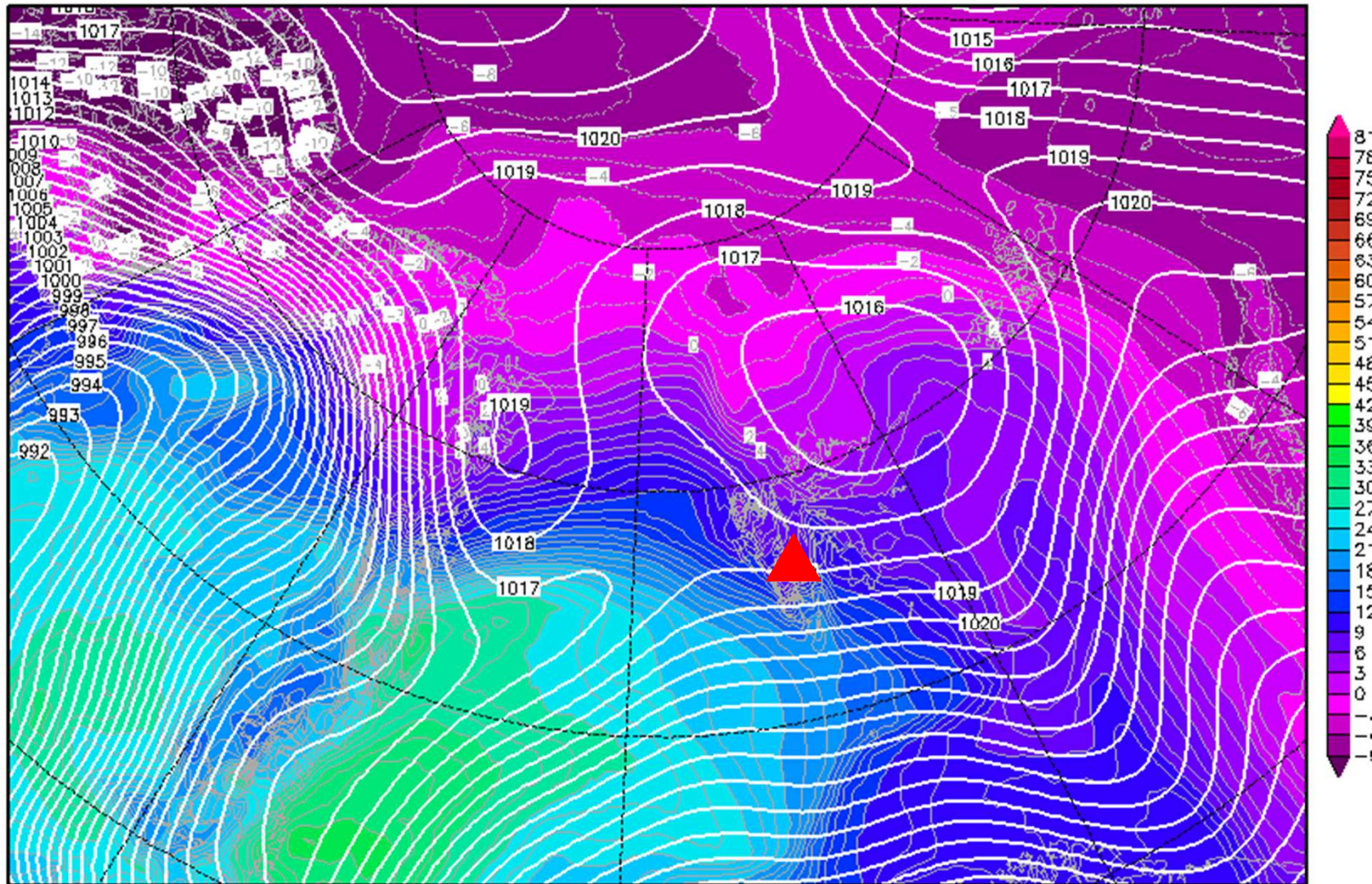


Surf. Press. & 850hPa Equivalent Potential Temperature 13/04, 12 UTC

Init : Wed, 10 APR 2019 06Z

Valid: Sat, 13 APR 2019 12Z

Bodendruck (hPa) und 850 hPa Aeq.Pot.T. (Grad C)



Daten: GFS-Modell des amerikanischen Wetterdienstes
(C) Wetterzentrale
www.wetterzentrale.de

Surf. Pressure & Wind – ECMWF 13/04, 12 UTC

