

ACLOUD Flight 2017 06 04, Sunday

POLAR 5
Remote

Crew: Mission PI Manfred Wendisch
AWI Christoph Petersen Est. Take Off: 10:15 LT
SMART Michael Schäfer
Eagle/Hawk Elena Ruiz Est. Duration: 5 h 25 Min
MiRAC Tobias Doktorowski
AMALi Mario Mech

Waypoints: **LYR:** 78° 14.816' N, 15° 27.545' E
C1: 78° 46.464' N, 15° 54.654' E
C2: 80° 41.400' N, 0° 39.060' E
PS: **81° 57.180' N, 10° 19.920' E**
C1: 78° 46.464' N, 15° 54.654' E
LYR: 78° 14.816' N, 15° 27.545' E

LYR – C1 climb and stay at 10,000 ft: **33 NM @ 140 kn** **15 min**

Waiting loop to start at C1 at 10:38 LT

C1 – C2 at 10,000 ft: **200 NM @ 140 kn** **85 min**

leave C1 at **10:38 LT** on the satellite track

Meeting with satellite: **11:38:00 LT at 80° 16.236' N; 5° 14.406' E**

Release *dropsonde #1*; 5 min after C1

Release *dropsonde #2*; 5 min before C2

C2 – PS at 10,000 ft: **115 NM @ 140 kn** **50 min**

Before reaching PS: Release *dropsonde #3*

PS position Three double-triangle pattern, 10,000 ft, 15 miles leg length, 120 kn

In coordination with P6 **170 NM @ 140 kn** **75 min**

PS – C1 at 10,000 ft: **200 NM @ 140 kn** **85 min**

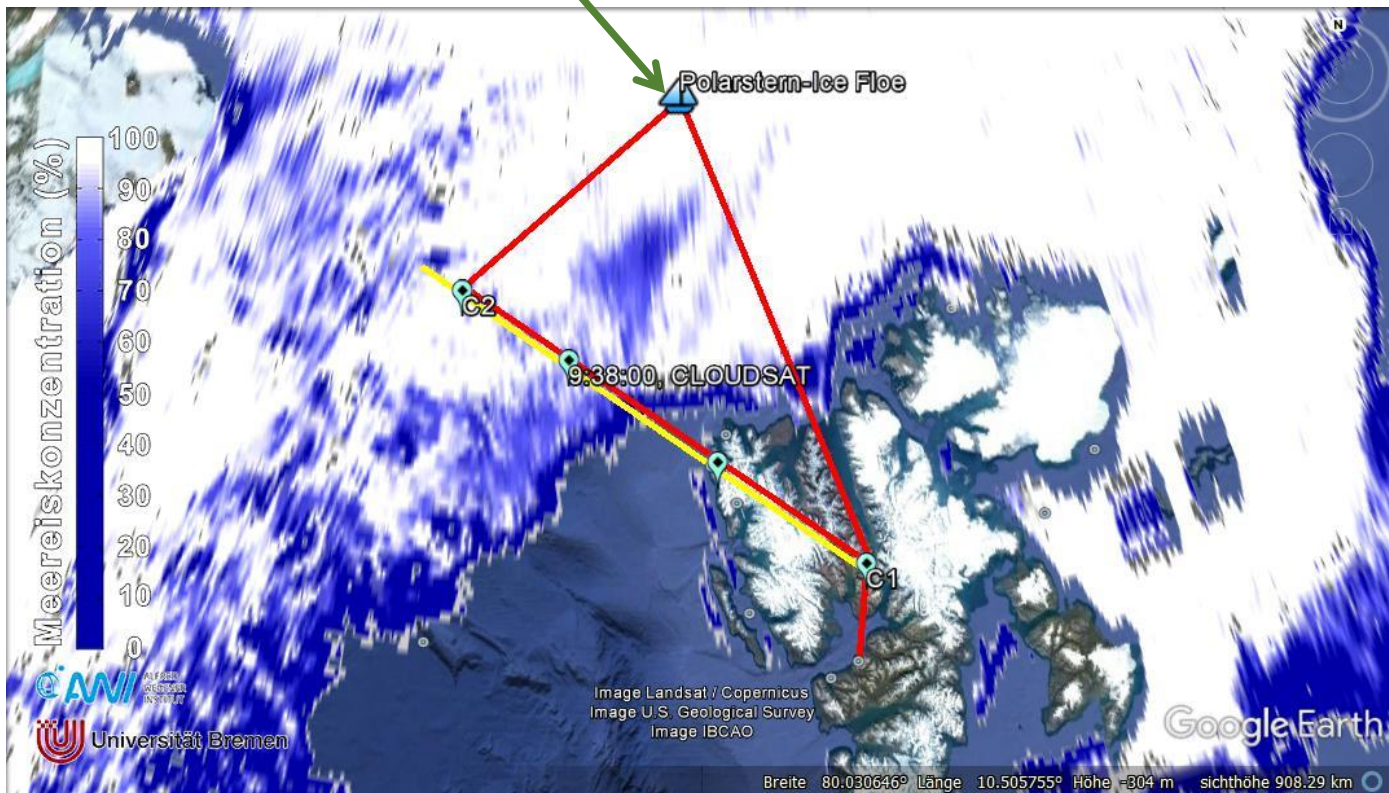
Release *dropsonde #4*; 5 min after PS

C1 – LYR descend from 10,000 ft: **33 NM @ 140 kn** **15 min**

Total: **752 NM** **5 h 25 min**

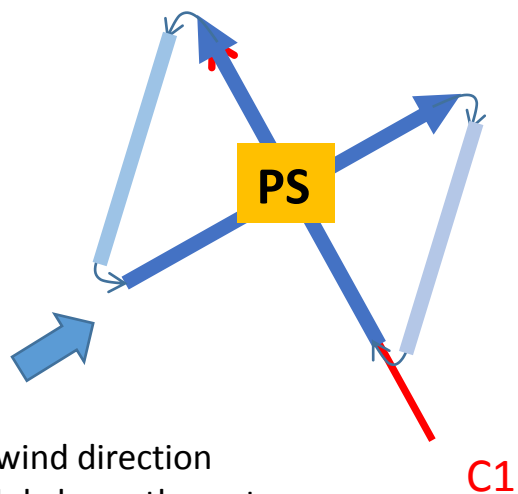
Double Triangle at 10,000 ft
above Polarstern, duration about
4 x 25 min

4 Dropsondes



B. Double triangle-pattern

15 mile straight leg, parallel
and perpendicular to the wind



A. Loop-pattern at 10,000 ft 5 min straight leg

