

ACLOUD Flight 2017 05 23

POLAR 5
Remote

Crew:	Mission PI	Christof Lüpkes	
	AWI	Christoph Petersen	Est. Take Off: 11:00 LT
	SMART	Johannes Stapf	
	Eagle/Hawk	Elena Ruiz	Est. Duration: 5.0 Hours
	MiRAC	Friedhelm Jansen	
	AMALi	Tobias Doktorowski	

Waypoints:

C1	: 78° 45.00' N,	8° 00.00' E
C2	: 80° 30.00' N,	4° 00.00' E
C3	: 80° 00.00' N,	5° 20.00' E
C4	: 79° 50.00' N,	3° 40.00' E
C5	: 79° 01.00' N,	5° 40.00' E
C6	: 79° 10.00' N,	7° 15.00' E
NyÅ	: 78° 55.40' N,	11° 55.40' E

Flight Plan

LYR – C1 climb and stay at 10,000 ft: **100 NM @140kn**

C1 – C2 at 10,000 ft: **110 NM @140kn**
release drop sondes at appropriate points

Descend ~5000 ft on extended leg C1-C2 turn and further descend to C2 down to 200 ft

C2-C3-C4-C5-C6 at 200 ft: **155 NM @120kn**
C2-C3 calibration pattern with different flight speeds (Christof will announce)

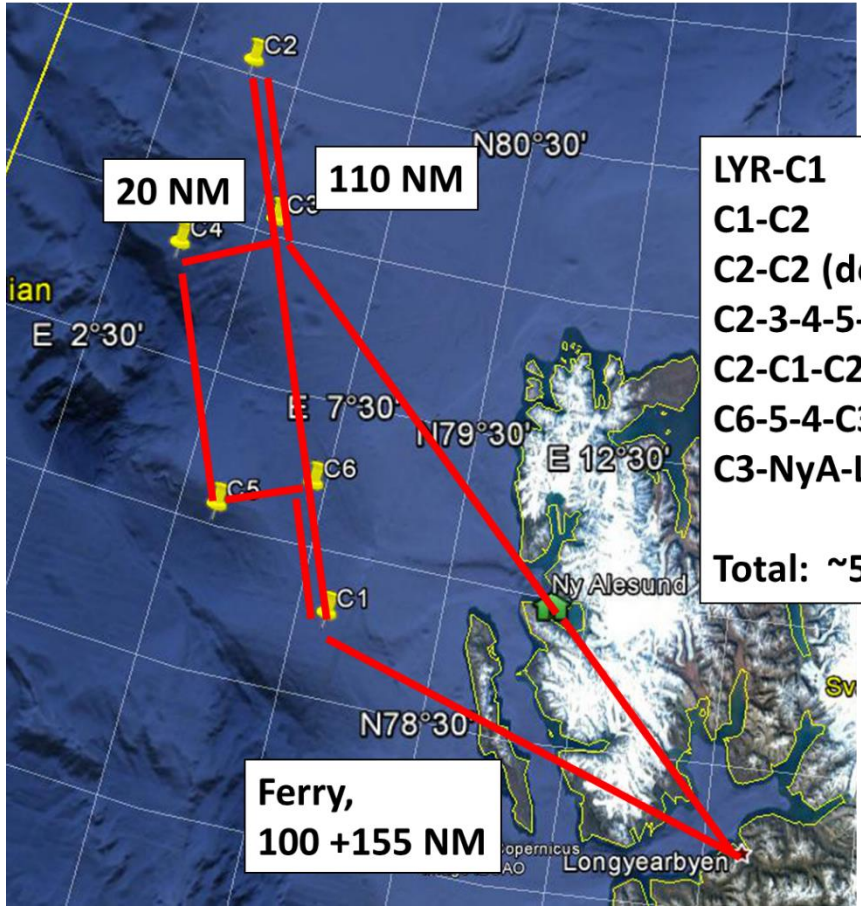
C6-C1-C6 climb to 10,000 ft: **50 NM @140kn**

C6 – C5 – C4 – C3 at 10,000 ft: **95 NM @140kn**
release drop sondes at appropriate points

C3 – NyÅ at 10,000 ft: **95 NM**

NyÅ – LYR at 10,000 ft as long as possible: **60 NM**

Total: **640+40 NM (0.75+1.0+0.25+1.1+0.25+0.75+1.0 = 5.1 hrs)**



**Take-off:
11:00**

LYR-C1	0.75 h
C1-C2	1.00 h
C2-C2 (desc.)	0.25 h
C2-3-4-5-6	1.10 h
C2-C1-C2 (asc.)	0.25 h
C6-5-4-C3	0.75 h
C3-NyA-LYR	1.00 h
Total:	~5.0 h