

Weather briefing ACLOUD

From Fri 16 June 2017
for Sat 17 June 2017
and next three days

Summary

The low pressure system south of us shifts NE, with a high moving into the Fram Strait from the south. Occluded front over Spitsbergen dissipating.

Today, west of Spitsbergen NW 7.5-12.5 kt winds, NE 2.5-5.0 kt in the north. Air flow becoming westerly over the region, increasing in strength to 10 kt near Longyearbyen.

Predominantly low-level clouds over the region, becoming more patchy over Isfjorden into the day tomorrow. Clouds extending upward over the Polarstern area tomorrow. Low chances of fog near Longyearbyen.

Observations

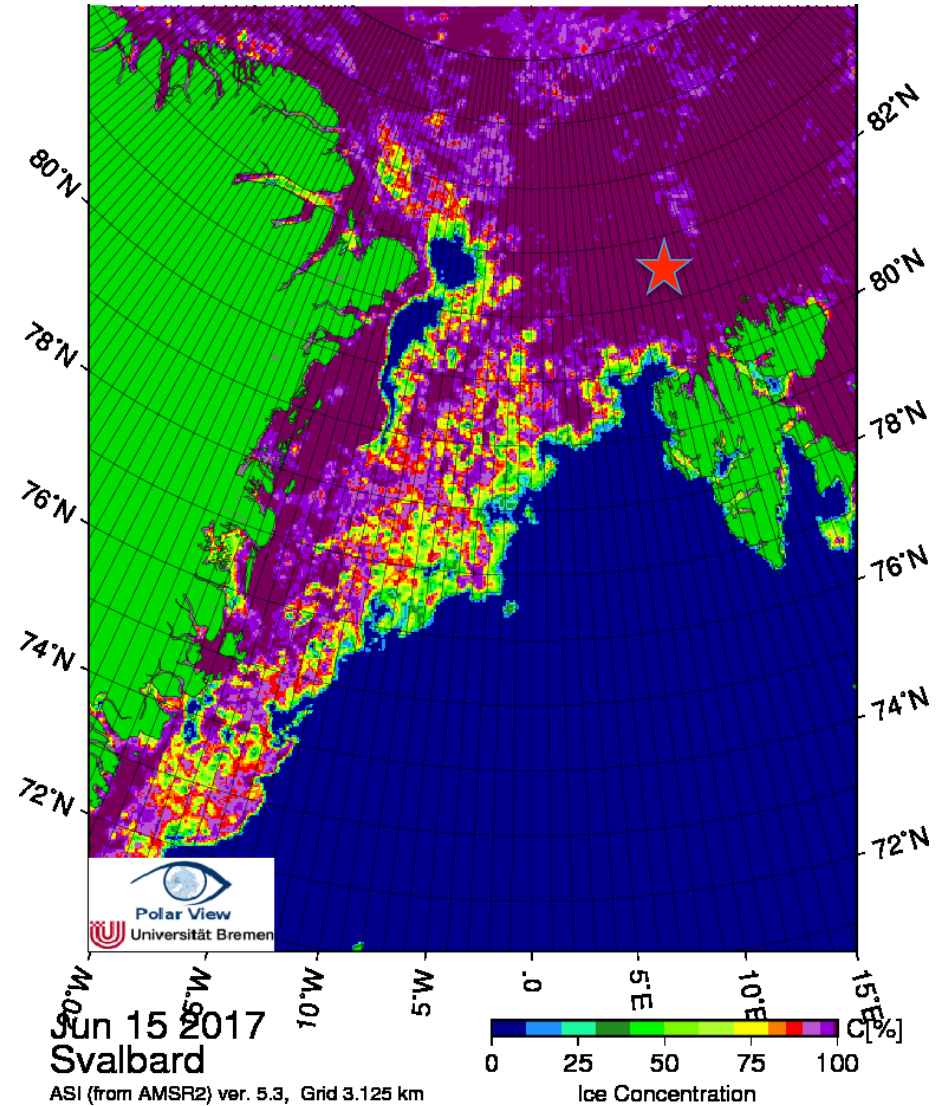
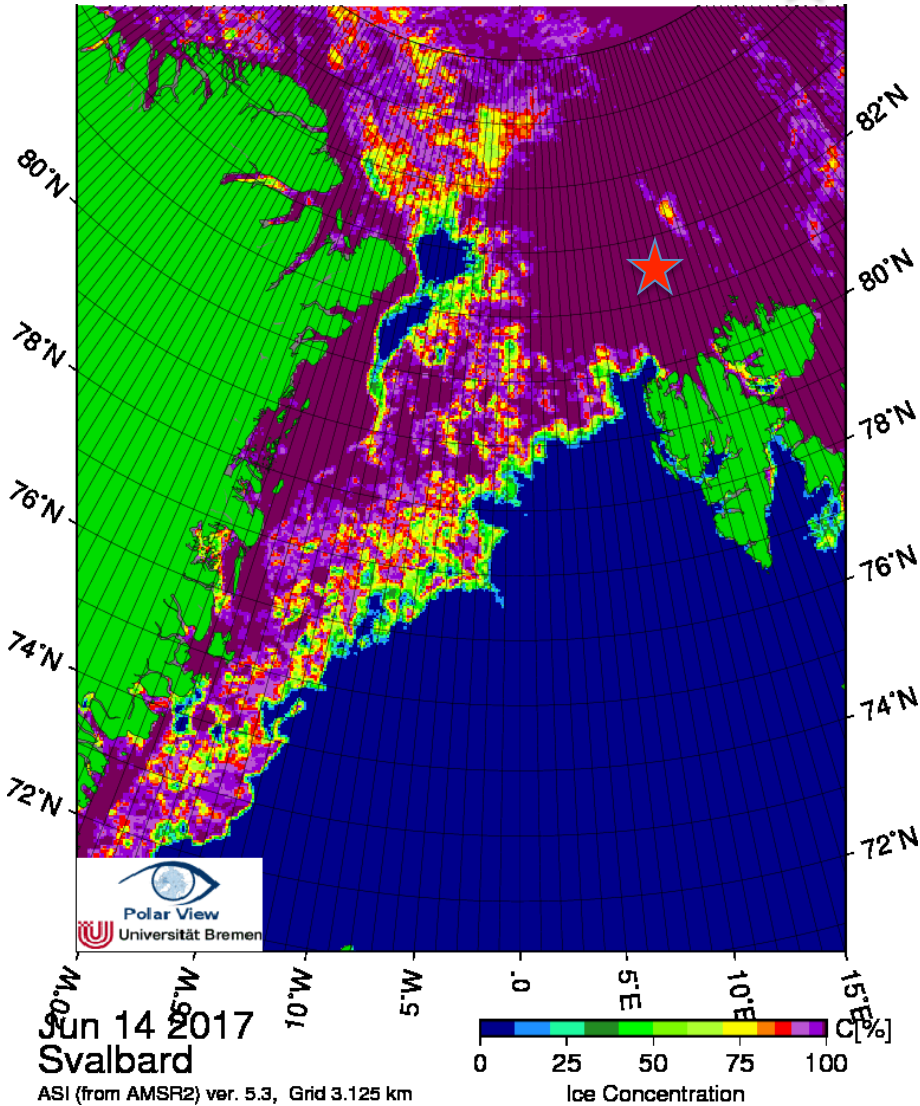
Fri 16 June 2017

Sea ice image

Jun 14

★ Polarstern

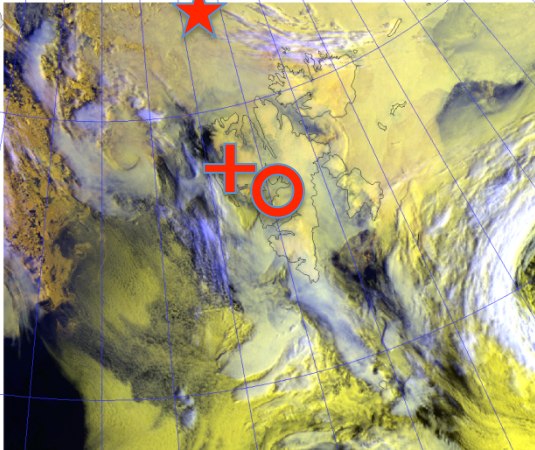
Jun 15



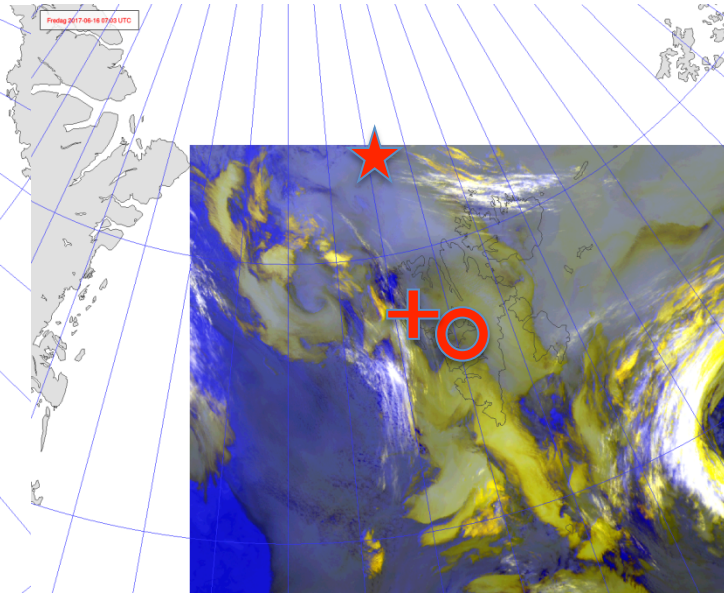
Satellite image

Jun 16
07:03 UTC

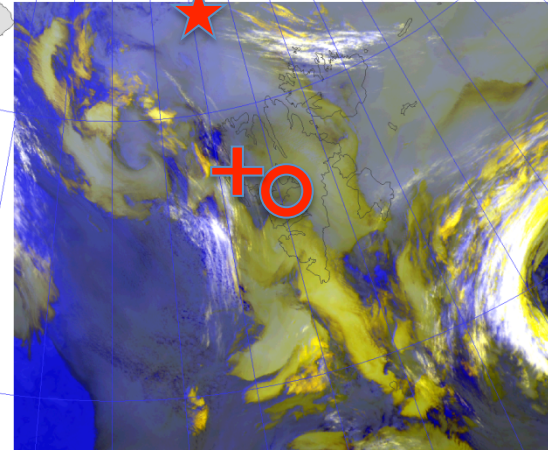
- ★ Polarstern
- + Ny-Ålesund
- Longyearbyen



VIS + IR



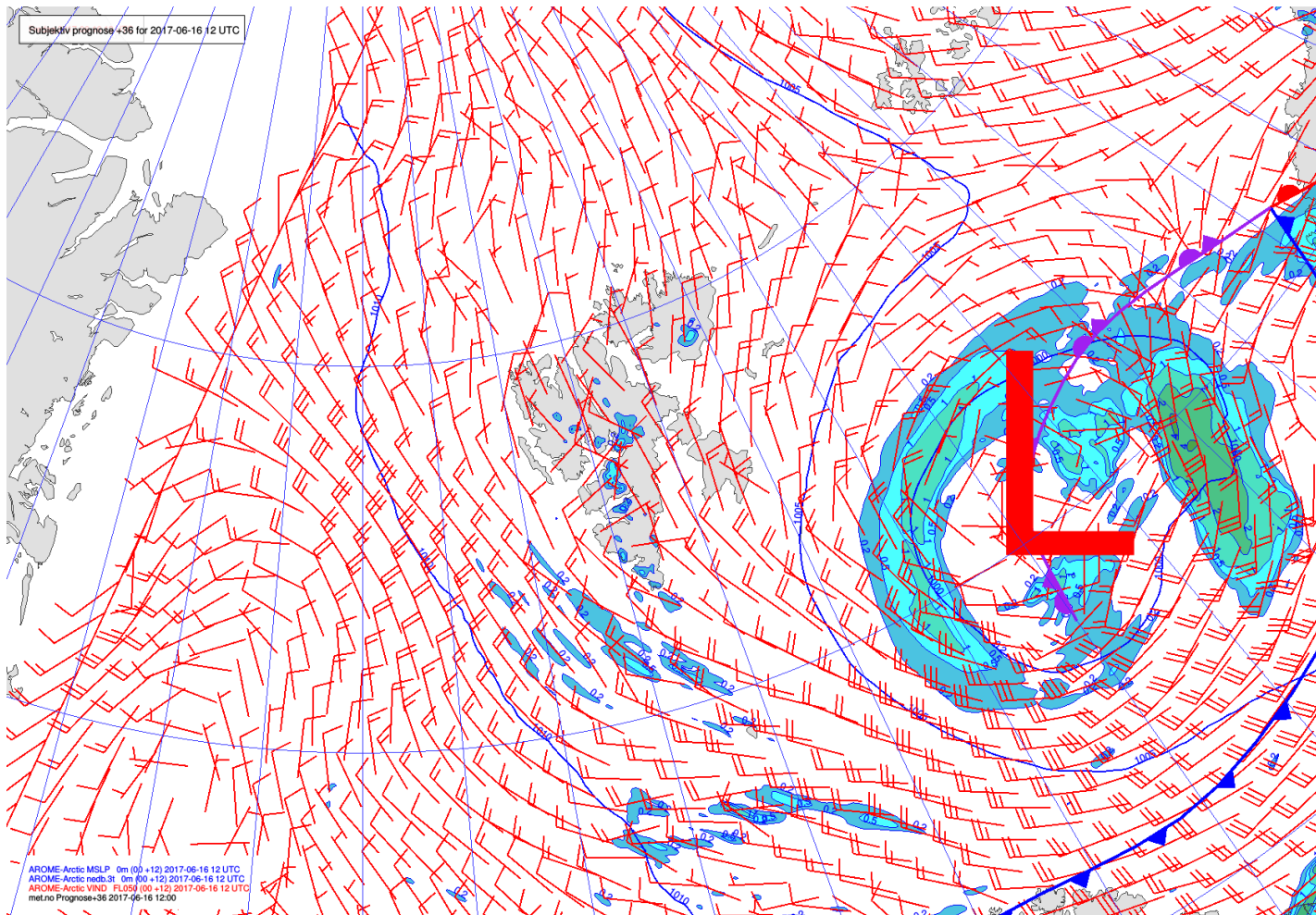
NOAA-19



IR 5+4+3

MSLP / v_{FL050} / Fronts / Precipitation

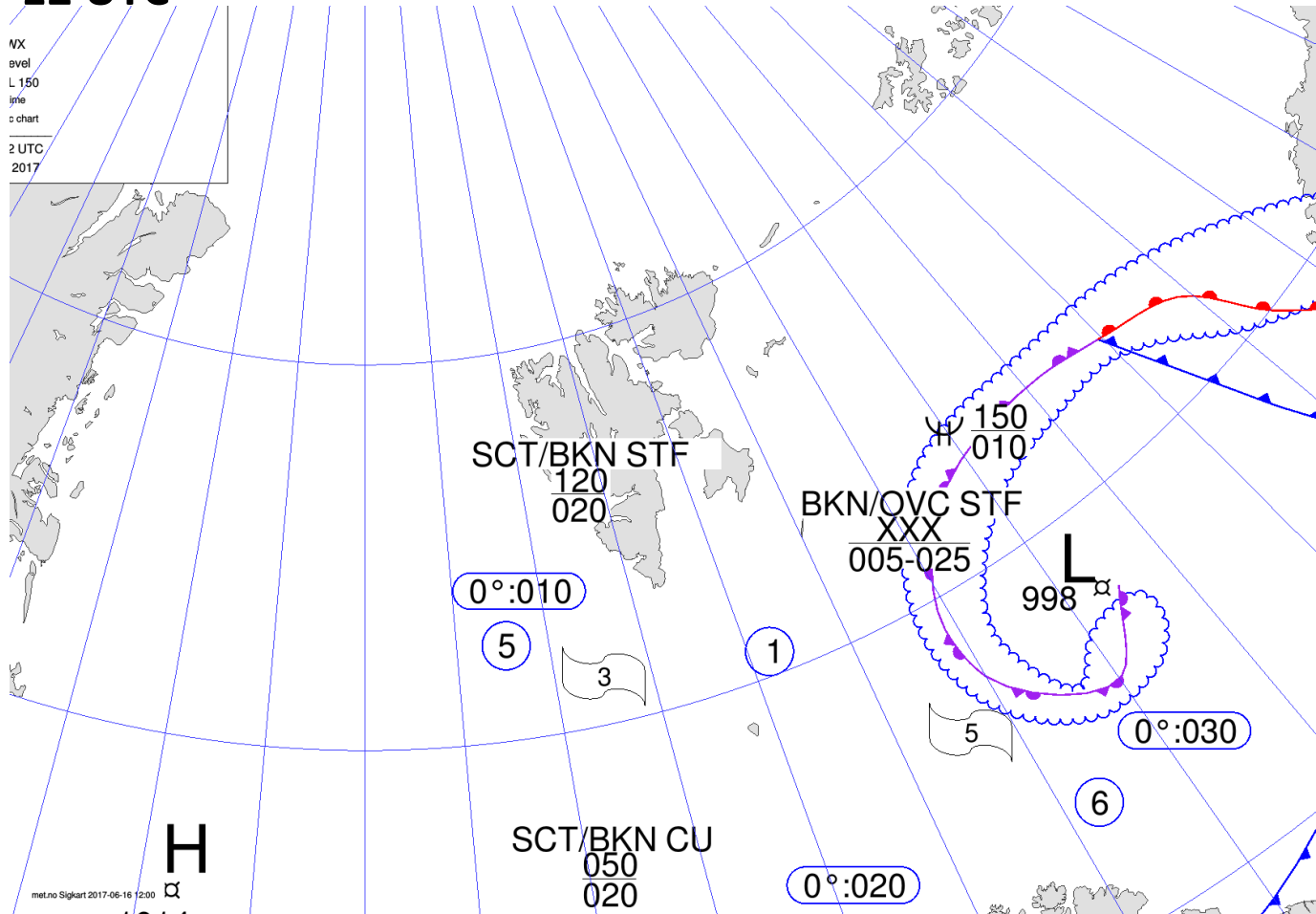
Jun 16
12 UTC



AROME-
Arctic

Significant weather chart

Jun 16
12 UTC



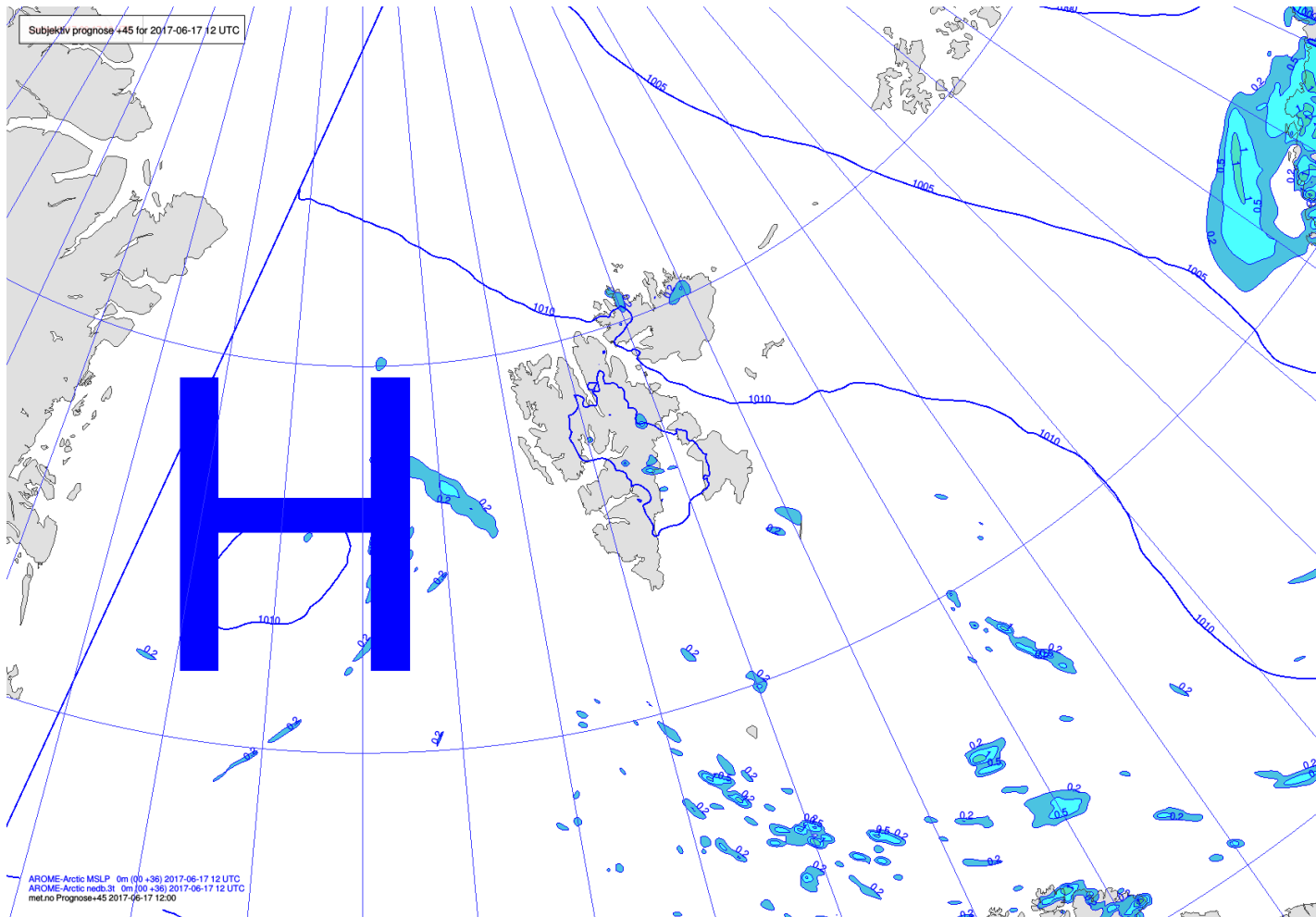
METAR and TAF

- Longyearbyen/Longyear (ENSB):
 - METAR 160650Z VRB03KT 9999 SCT007 BKN009
02/01 Q1003 TEMPO BKN007 RMK WIND 1400FT
03003KT
 - TAF 160500Z 1606/1706 25010KT 9999 -RADZ SCT007
BKN020 TEMPO 1606/1618 VRB05KT BKN008
 - No SIGMET/AIRMET
- Ny-Ålesund/Hamnerabben (ENAS):
 - METAR 160550Z 03002KT VRB 9999 FEW015 BKN027
OVC039 03/M01 Q1003

Forecast
Sat 17 June 2017

MSLP / Fronts / Precipitation

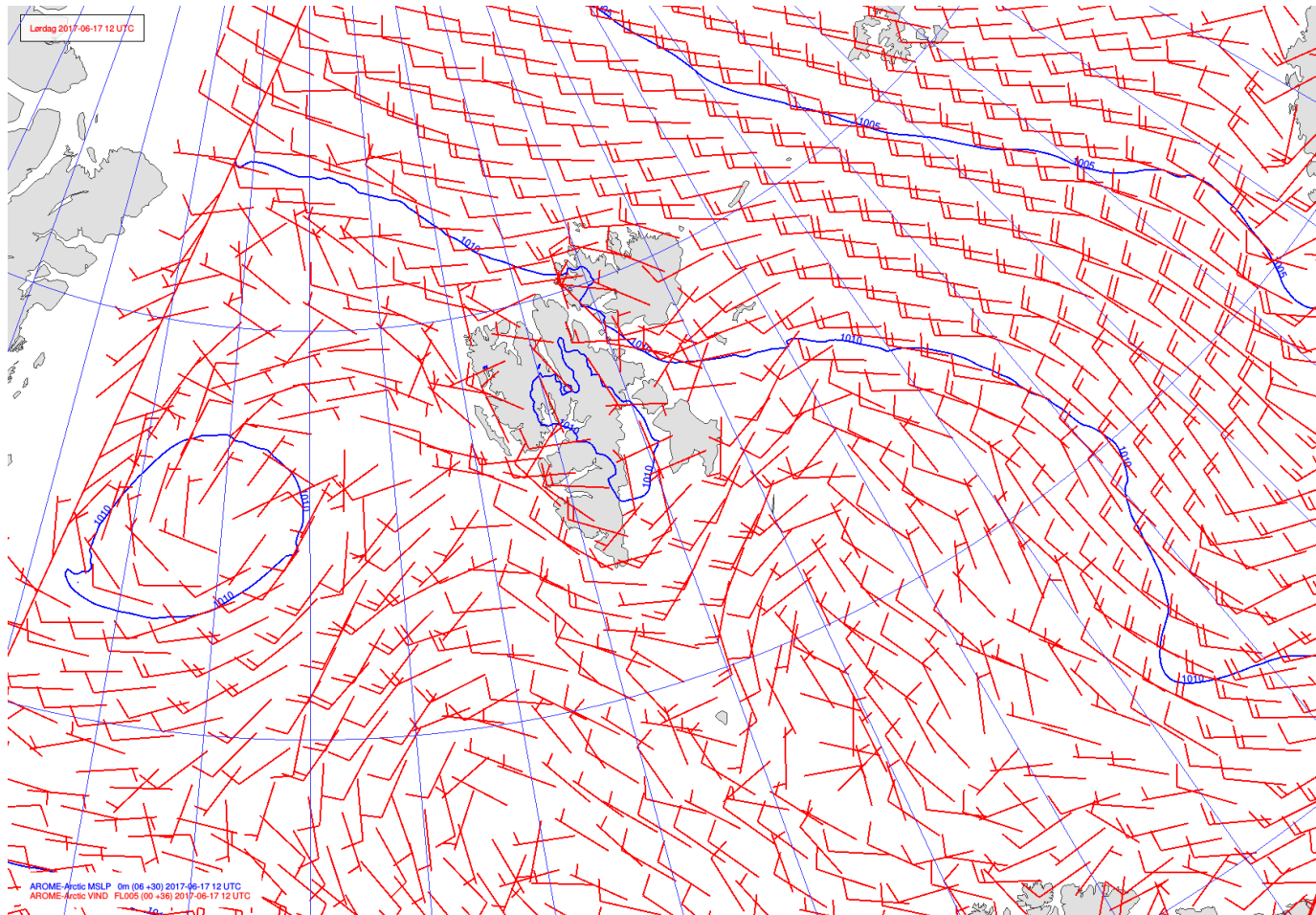
Jun 16
12 UTC



AROME-
Arctic

MSLP / V_{FL005}

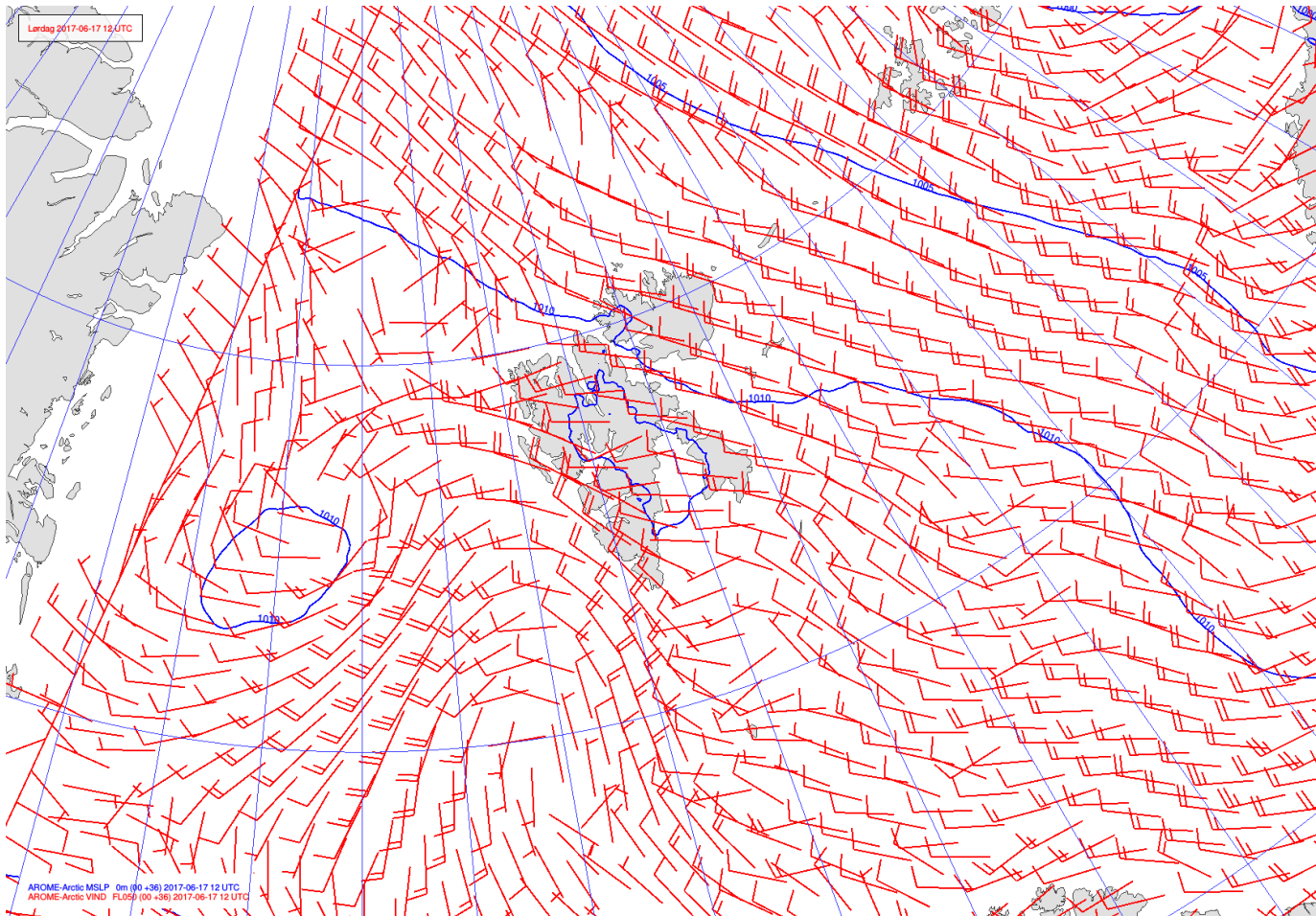
Jun 17
12 UTC



AROME-
Arctic

MSLP / V_{FL050}

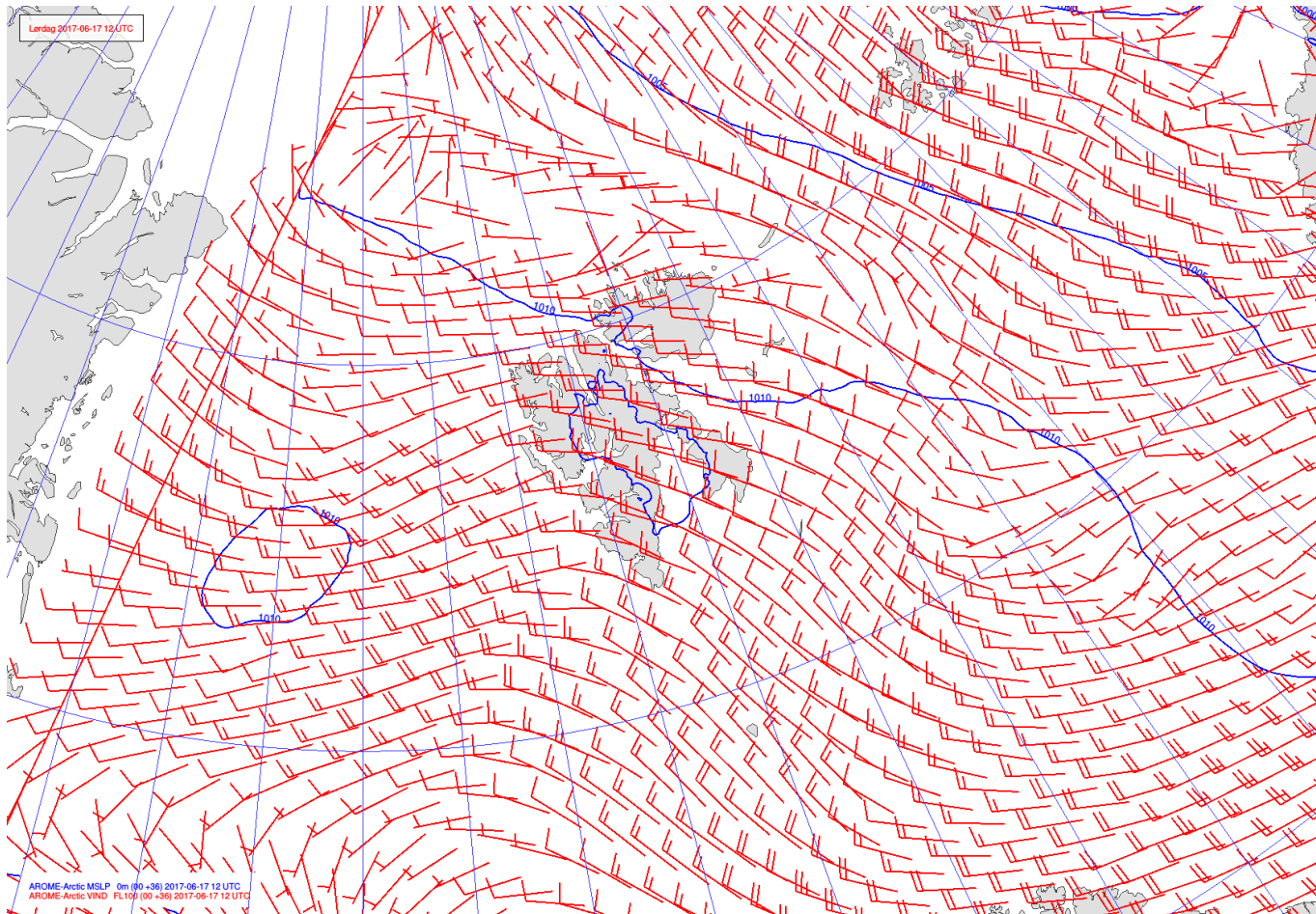
Jun 17
12 UTC



AROME-
Arctic

MSLP / V_{FL100}

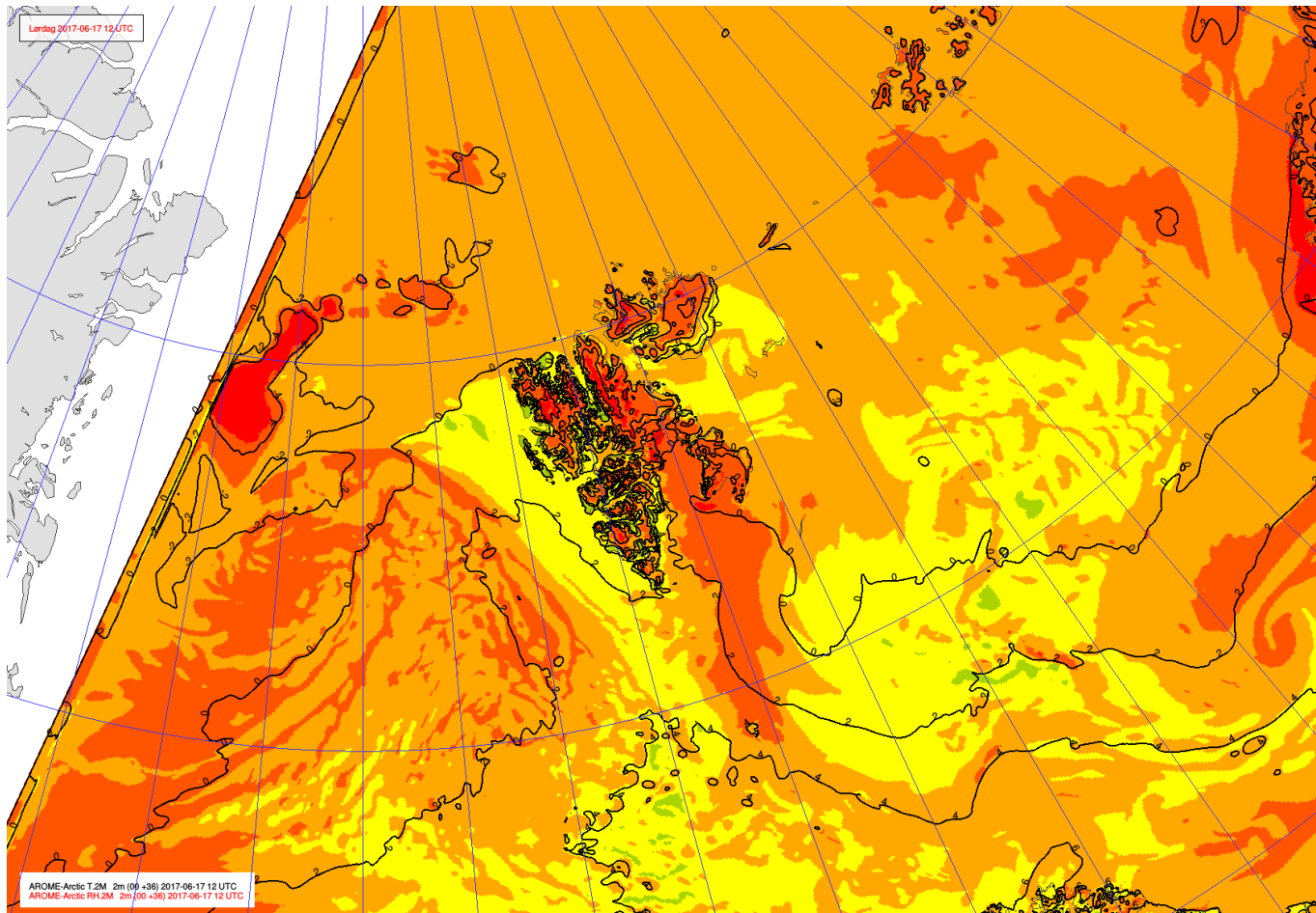
Jun 17
12 UTC



AROME-
Arctic

T_{2m} / RH_{2m}

Jun 17
12 UTC



AROME-
Arctic

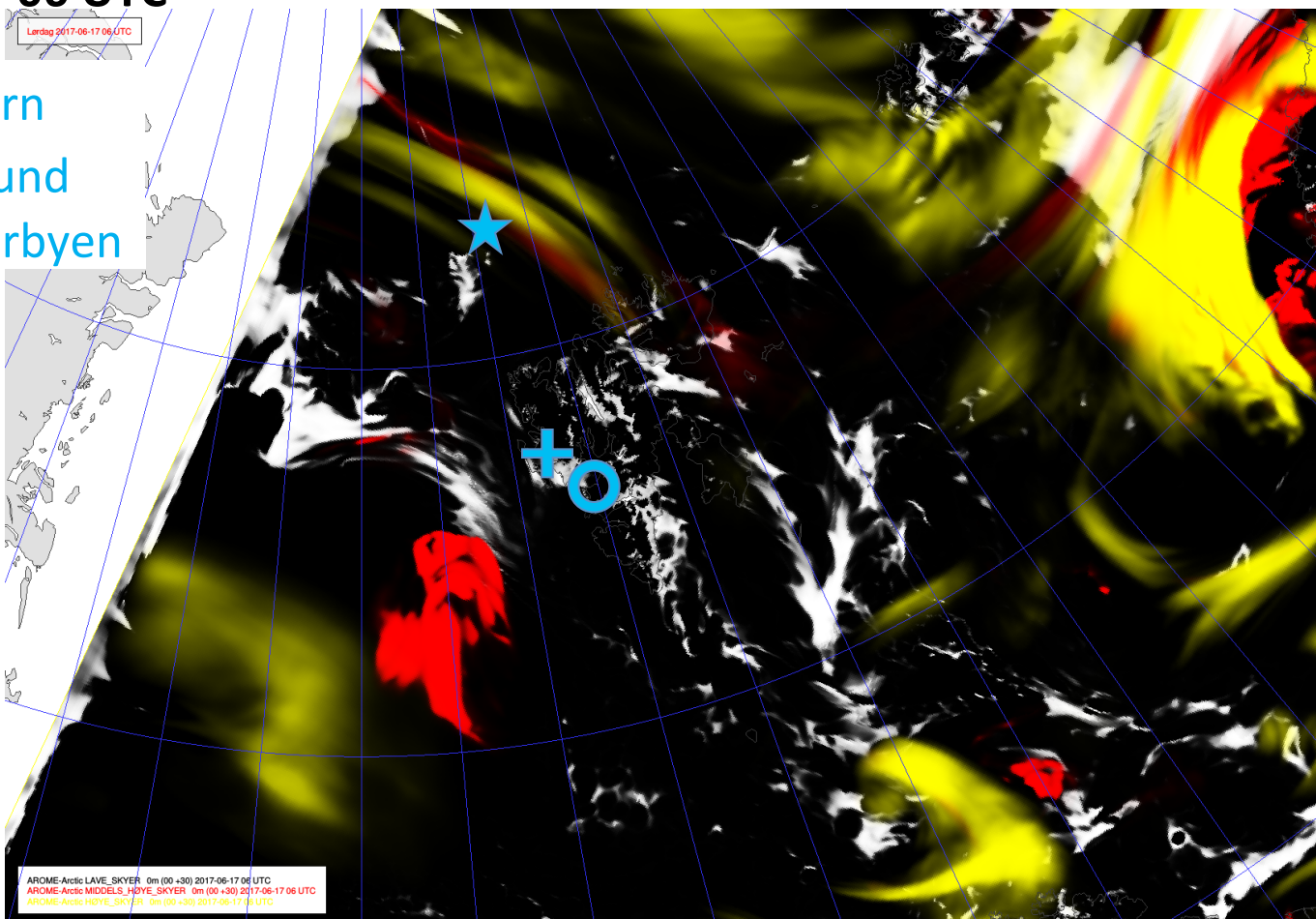
Cloud cover

Jun 17
06 UTC

Low / Medium / High

Lørdag 2017-06-17 06 UTC

- ★ Polarstern
- + Ny-Ålesund
- Longyearbyen



AROME-
Arctic

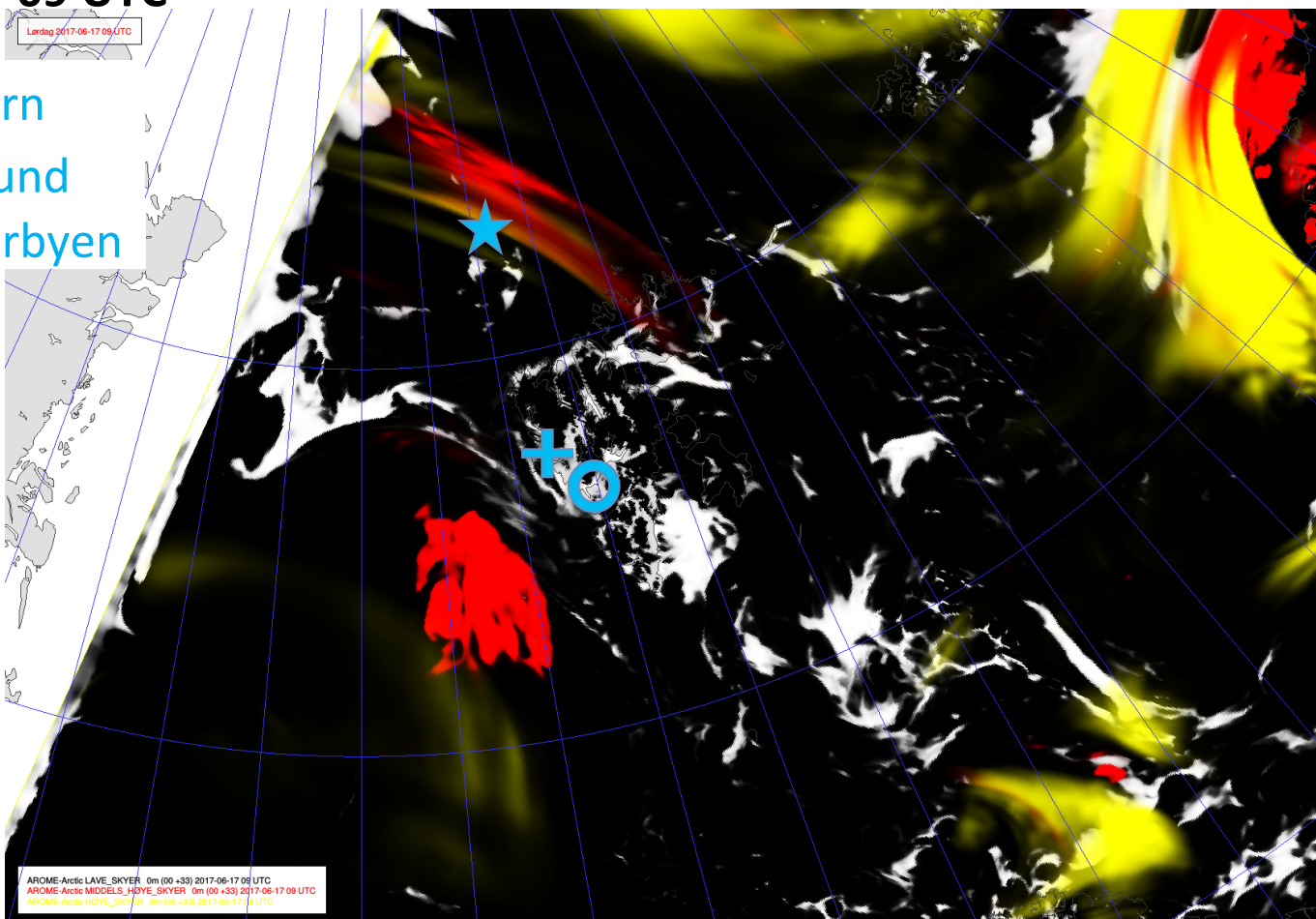
Cloud cover

Jun 17
09 UTC

Low / Medium / High

Lördag 2017-06-17 09 UTC

- ★ Polarstern
- + Ny-Ålesund
- Longyearbyen



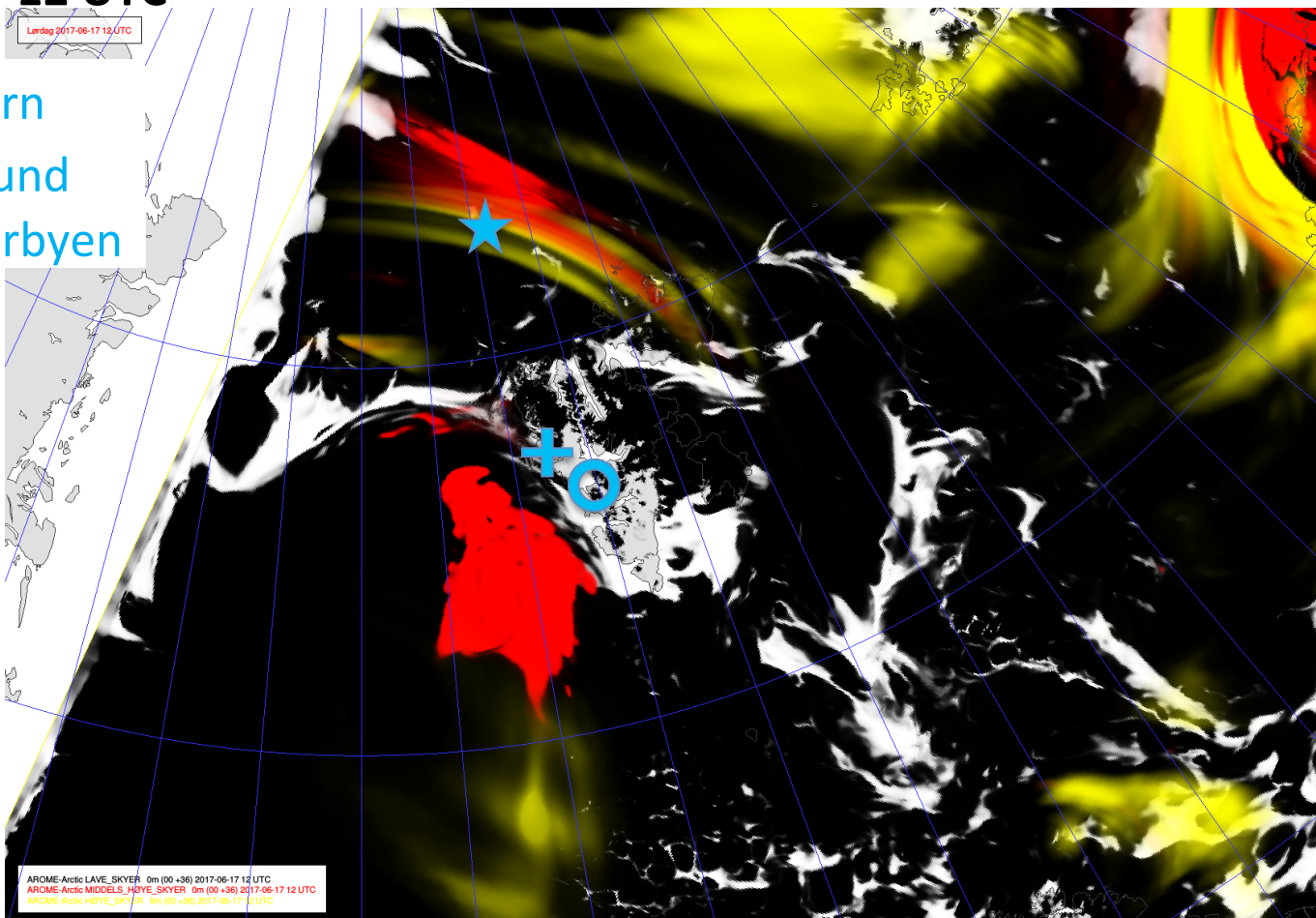
AROME-
Arctic

Cloud cover

Jun 17
12 UTC

Low / Medium / High

- ★ Polarstern
- + Ny-Ålesund
- Longyearbyen



AROME-
Arctic

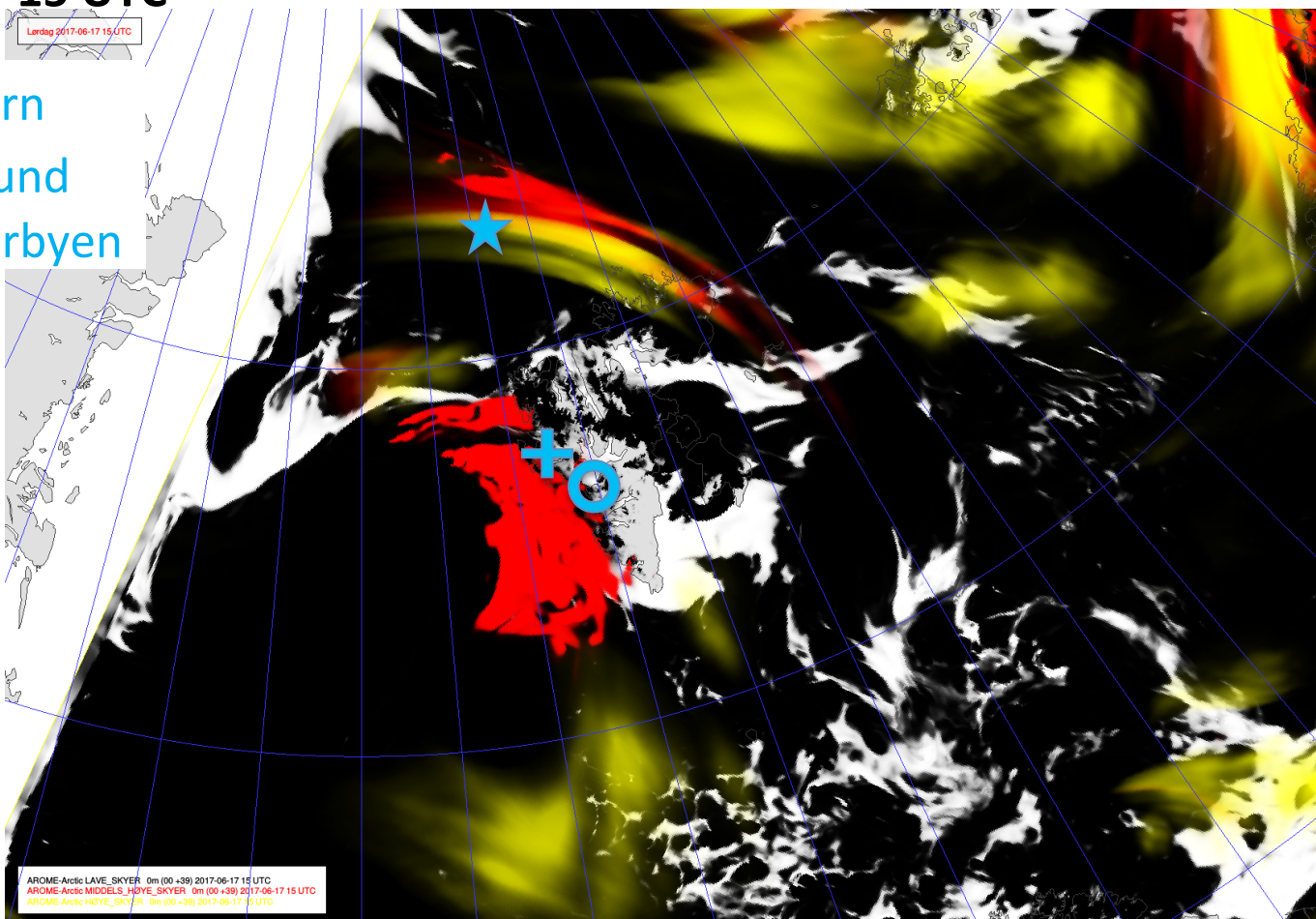
Cloud cover

Jun 17
15 UTC

Low / Medium / High

Lördag 2017-06-17 15 UTC

- ★ Polarstern
- + Ny-Ålesund
- Longyearbyen



AROME-
Arctic

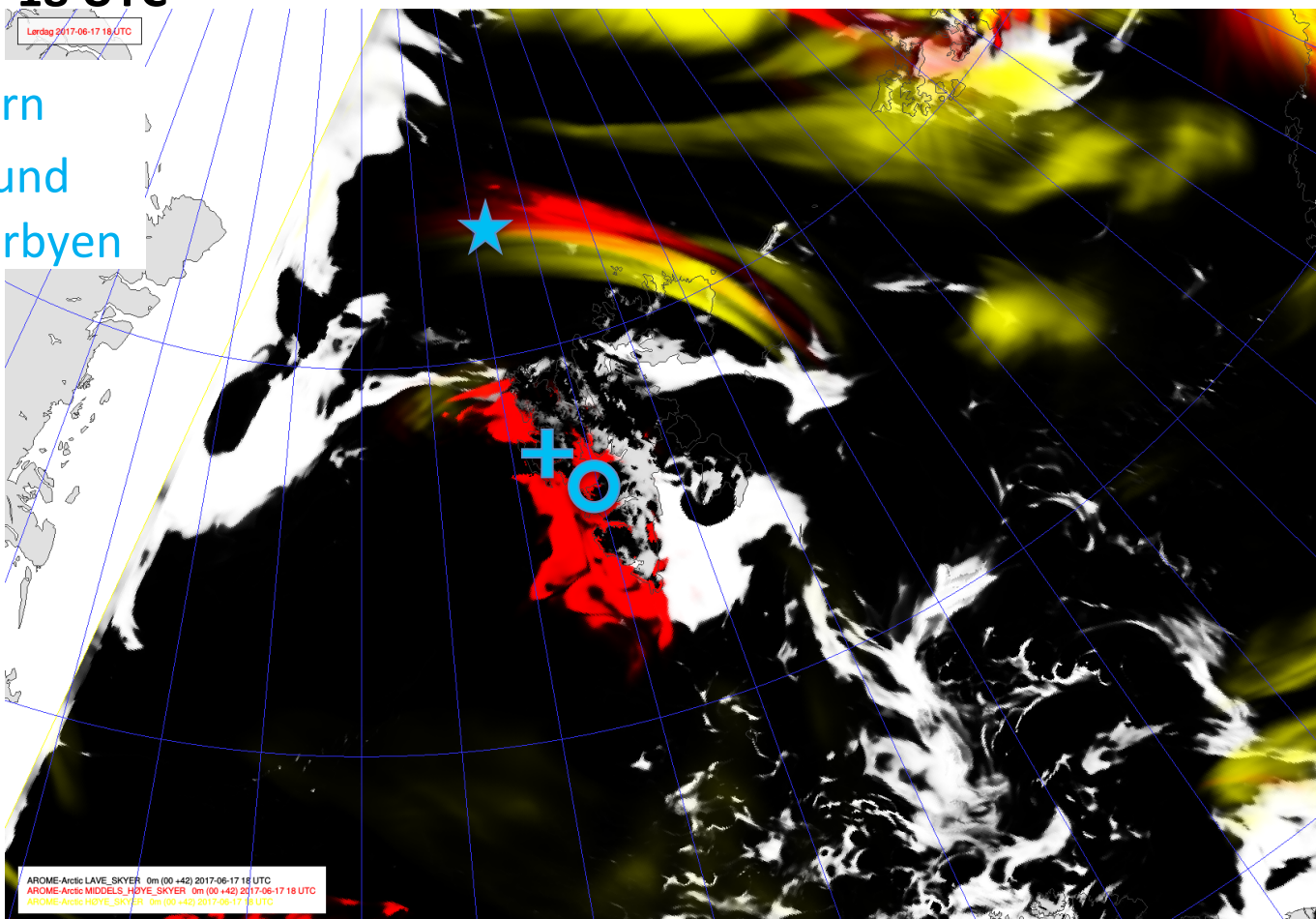
Cloud cover

Jun 17
18 UTC

Low / Medium / High

Lördag 2017-06-17 18 UTC

- ★ Polarstern
- + Ny-Ålesund
- Longyearbyen



AROME-
Arctic

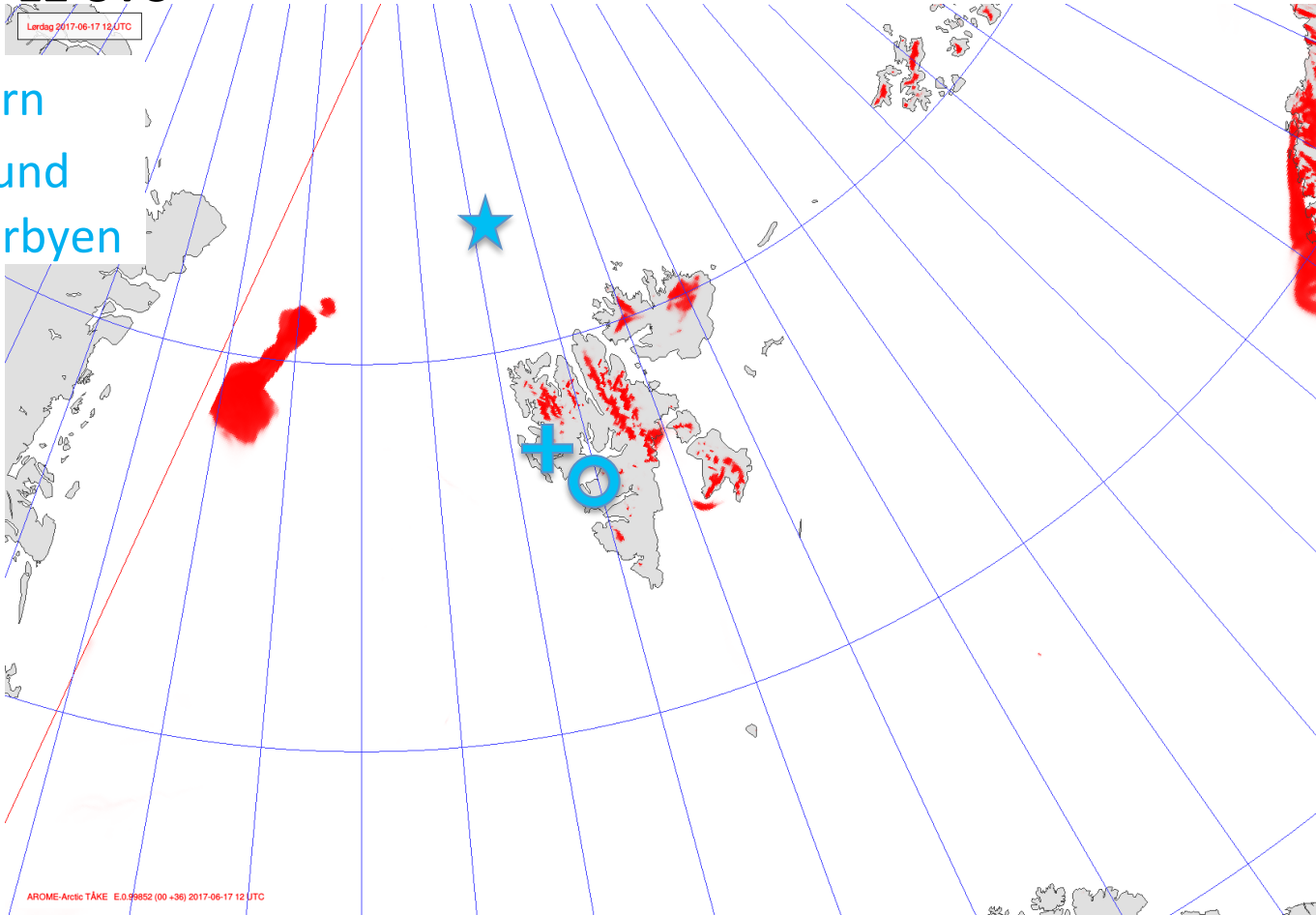
Fog

Jun 17
12 UTC

Low / Medium / High

Lördag 2017-06-17 12 UTC

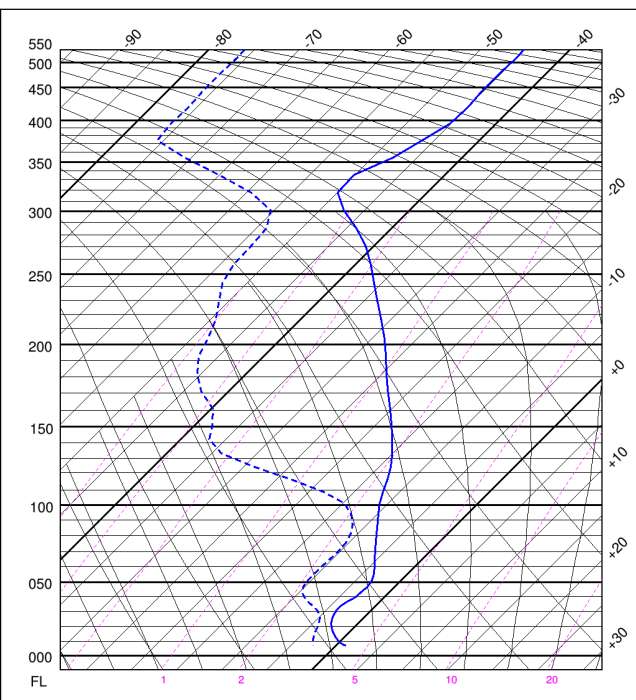
- ★ Polarstern
- + Ny-Ålesund
- Longyearbyen



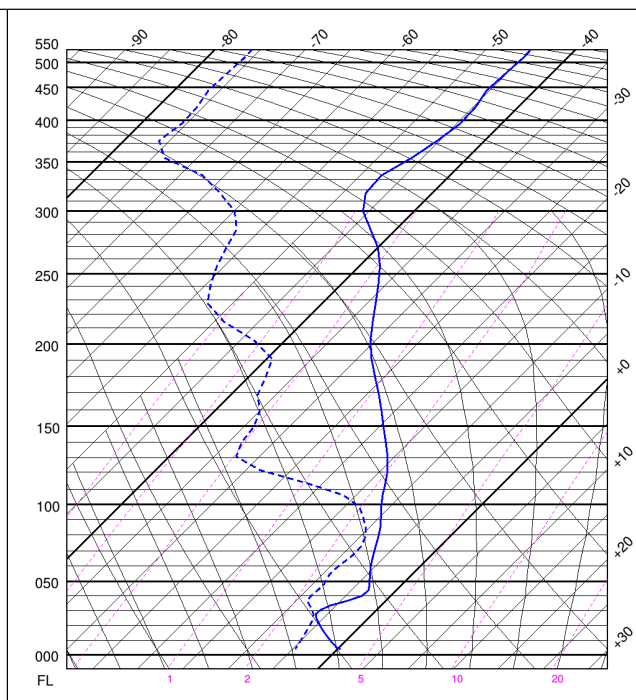
Vertical profile

Jun 17
12 UTC

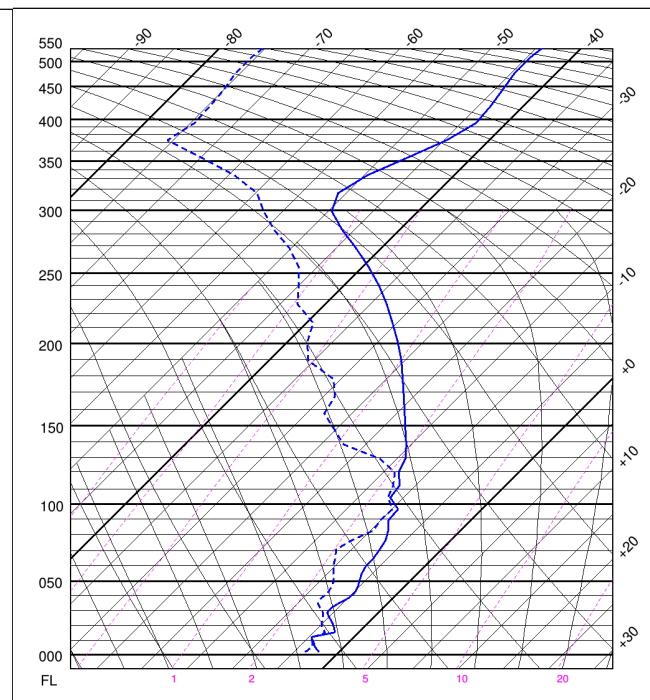
Longyearbyen



Ny-Ålesund



~Polarstern



AROME-Arctic

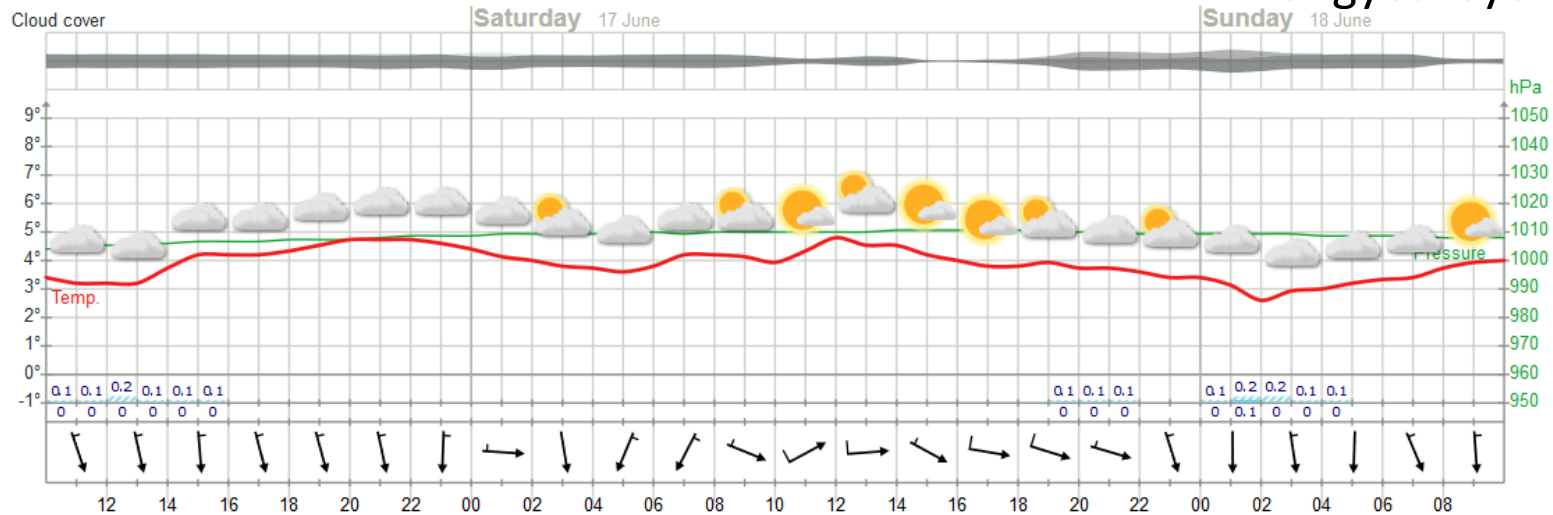
Outlook

Sun 18 – Tue 20 June 2017

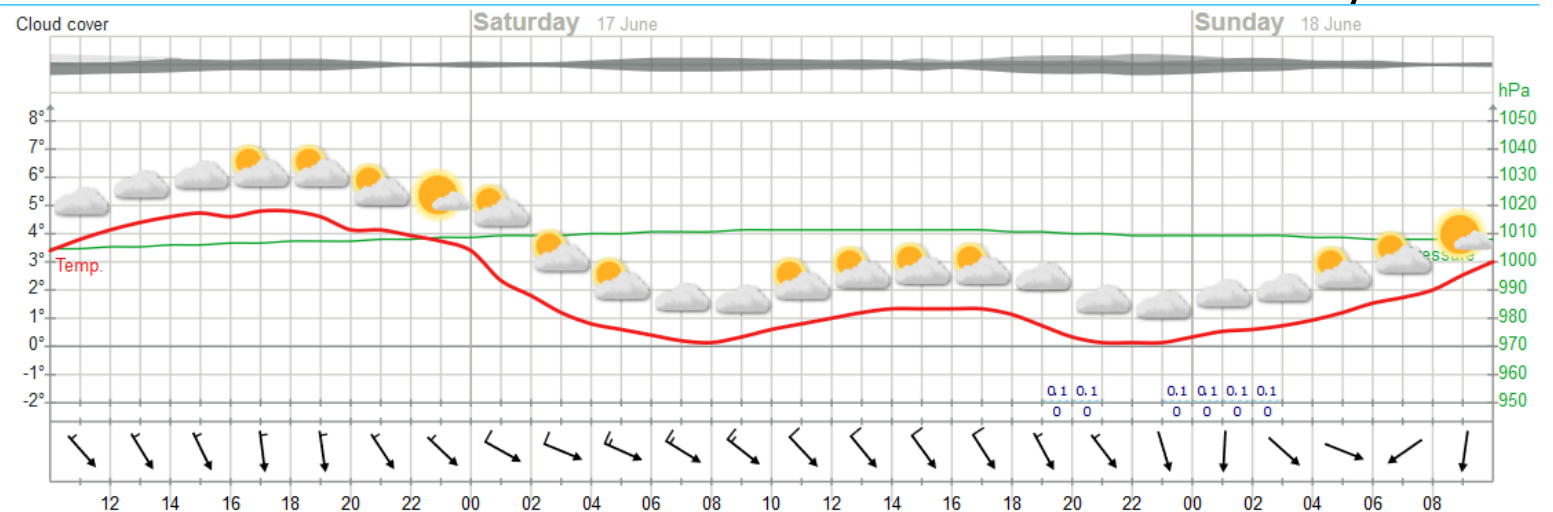
Meteogram

Jun 16-18

Longyearbyen

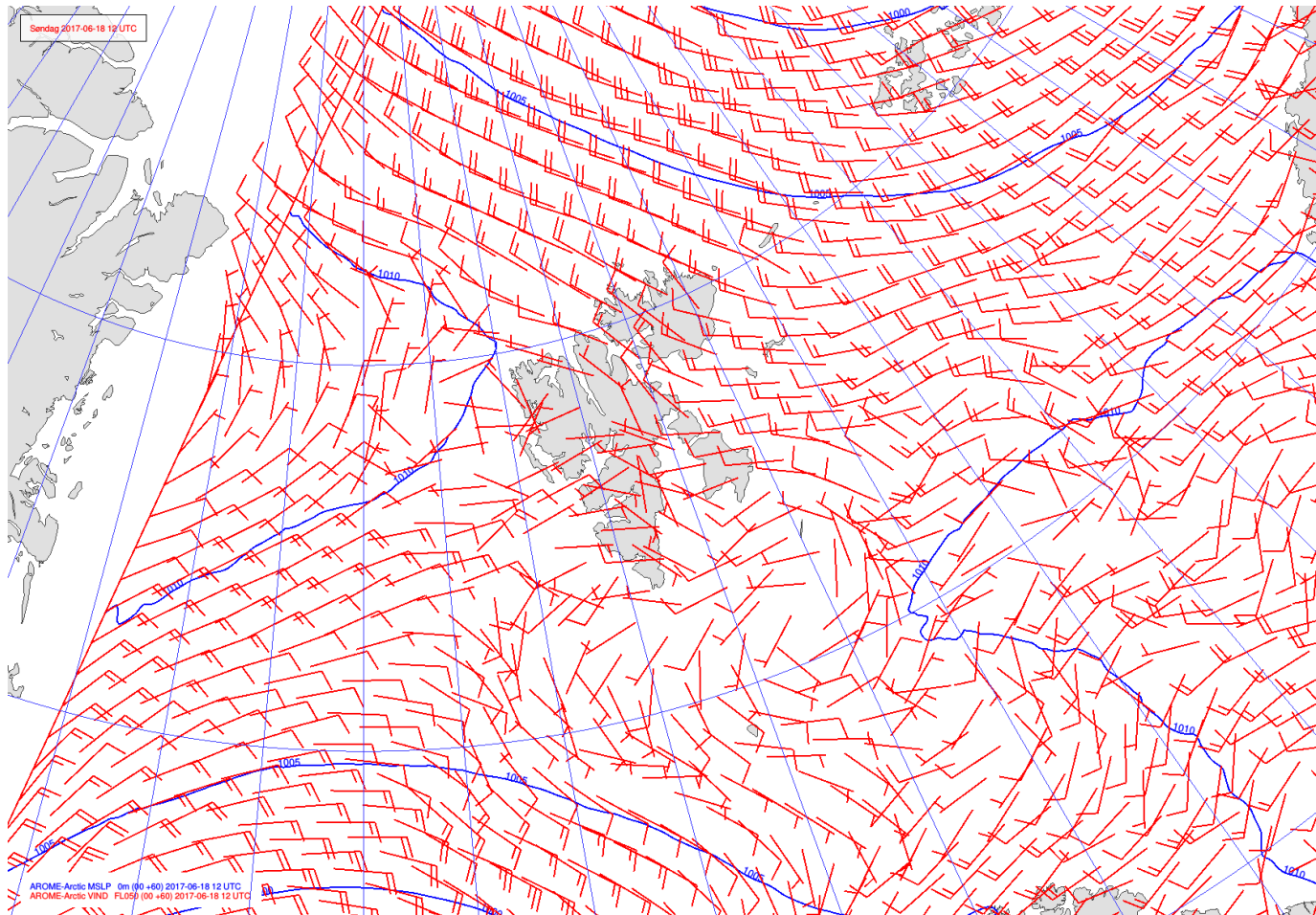


Ny-Ålesund



MSLP / V_{FL050}

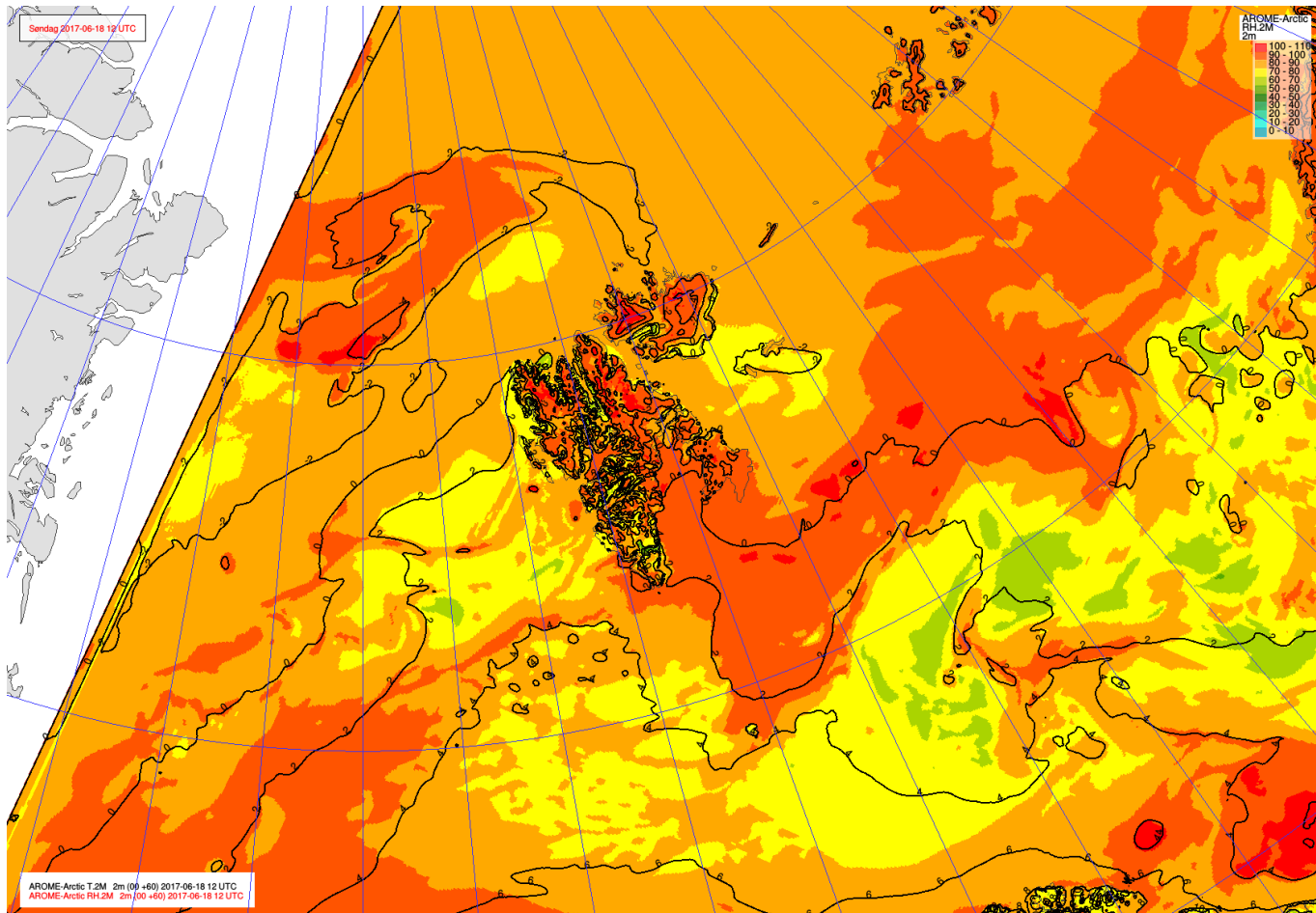
Jun 18
12 UTC



AROME-
Arctic

T_{2m} / RH_{2m}

Jun 18
12 UTC



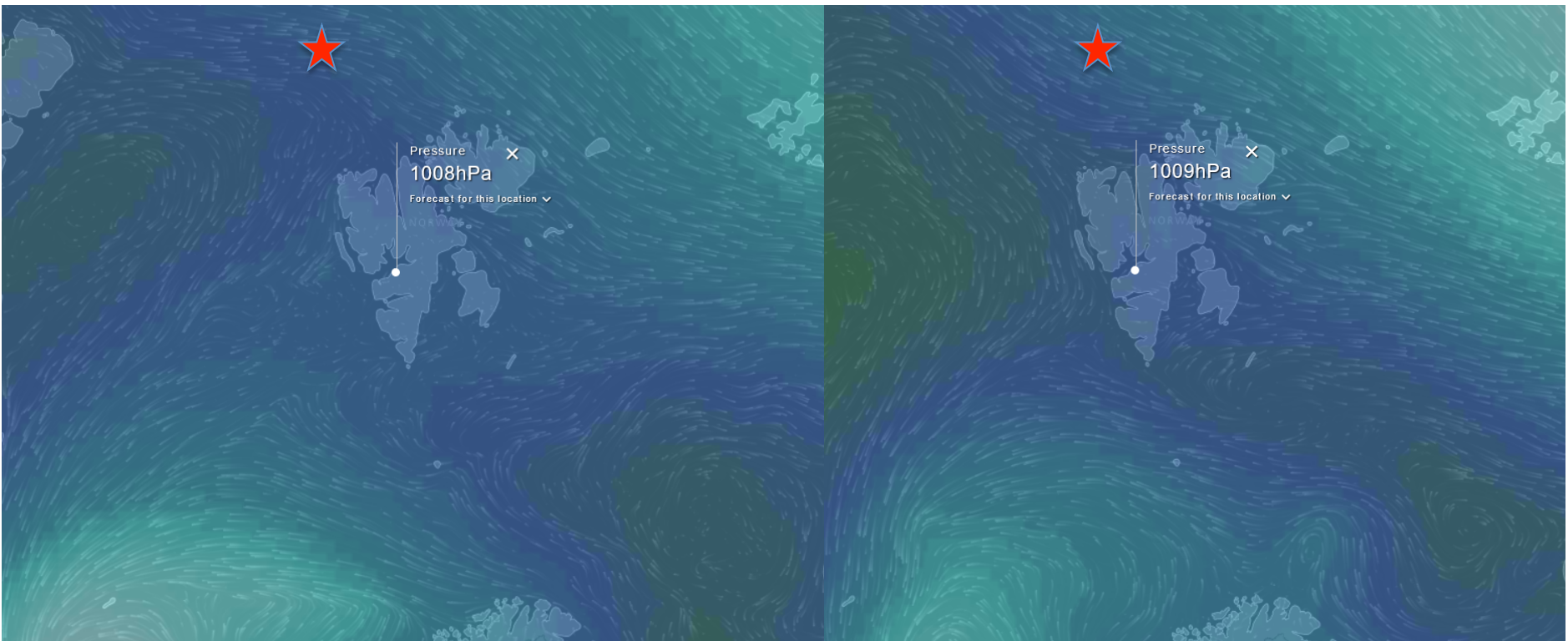
AROME-
Arctic

MSLP / v_{surf}

Jun 18
12 UTC

★ Polarstern

Jun 19
12 UTC



ECMWF