

Weather briefing ACLOUD

From Wed 14 June 2017
for Thu 15 June 2017
and next three days

Summary

Today, Svalbard lies between a high pressure system to the west and low to the east, setting up a northerly air flow in the region. Weak, variable winds near Longyearbyen, N 5-10 kt over Polarstern.

For the next 24 hr, the low pressure system moves SW accompanied by an occluded front and weak precipitation. N 5.0-7.5 kt winds ahead (i.e. west) of front, weak, variable behind.

Predominantly low overcast conditions over the whole region today and tomorrow. Low chance of fog during daytime near Longyearbyen. Deeper clouds over N Spitsbergen and Polarstern.

Observations

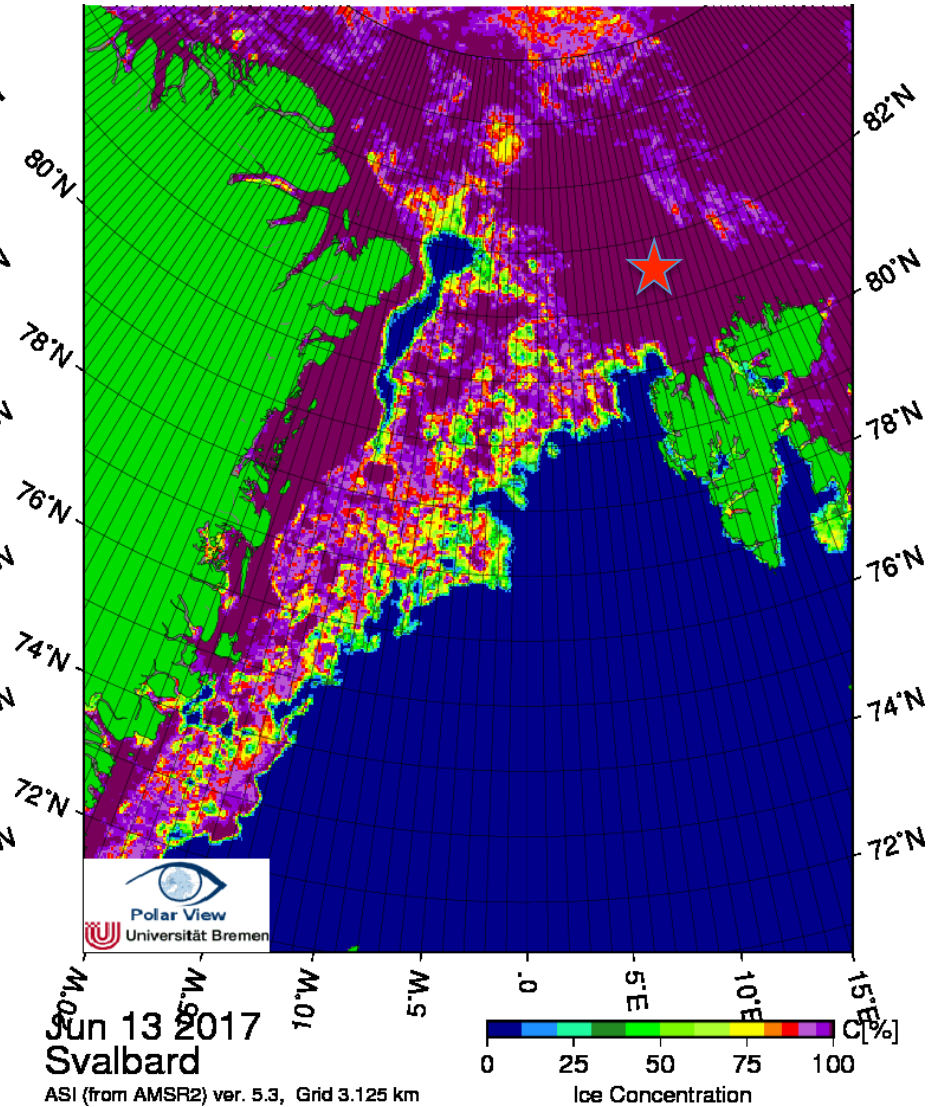
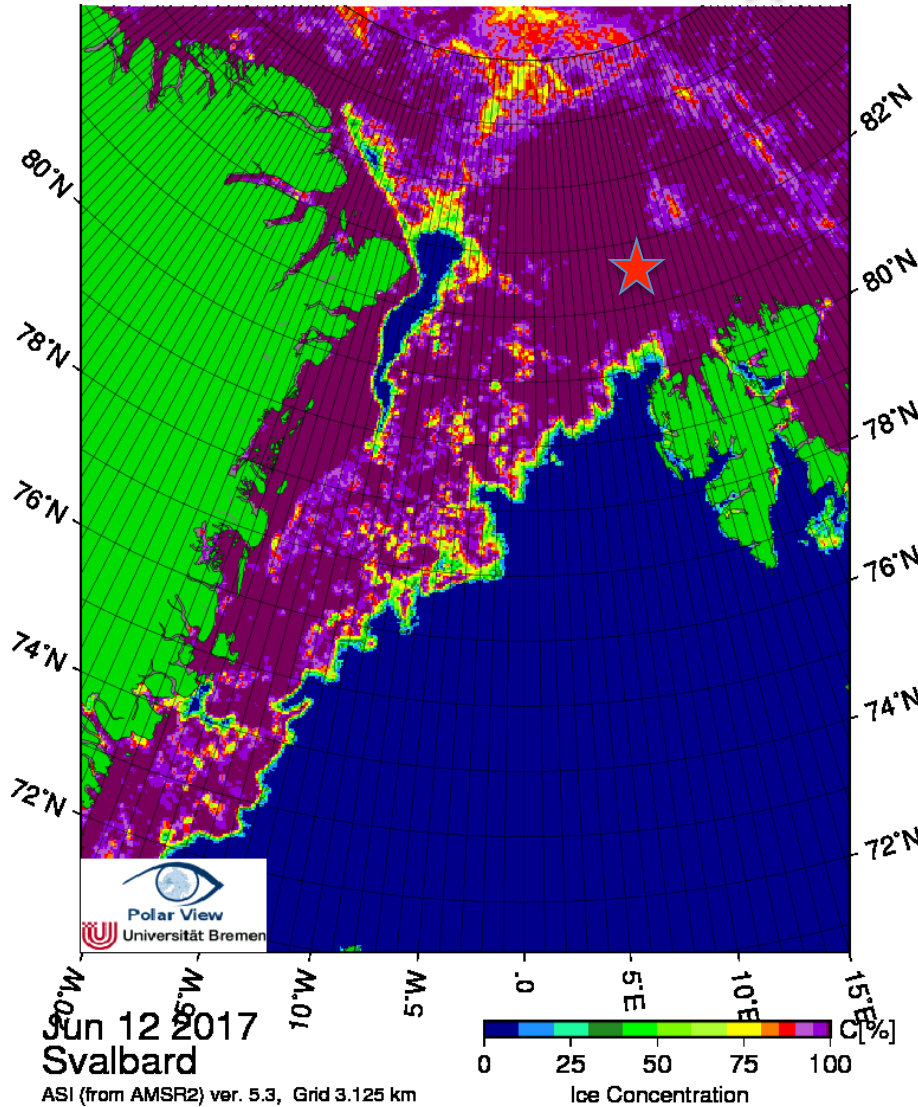
Wed 14 June 2017

Sea ice image

Jun 12

★ Polarstern

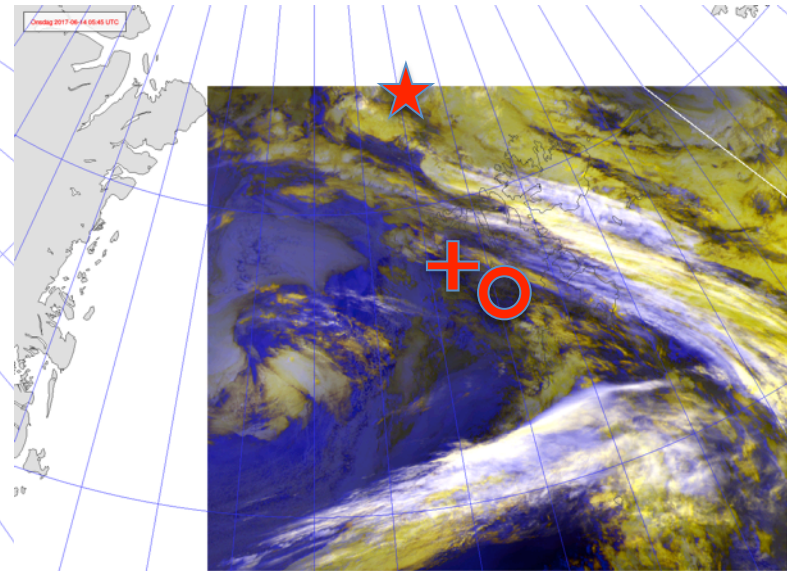
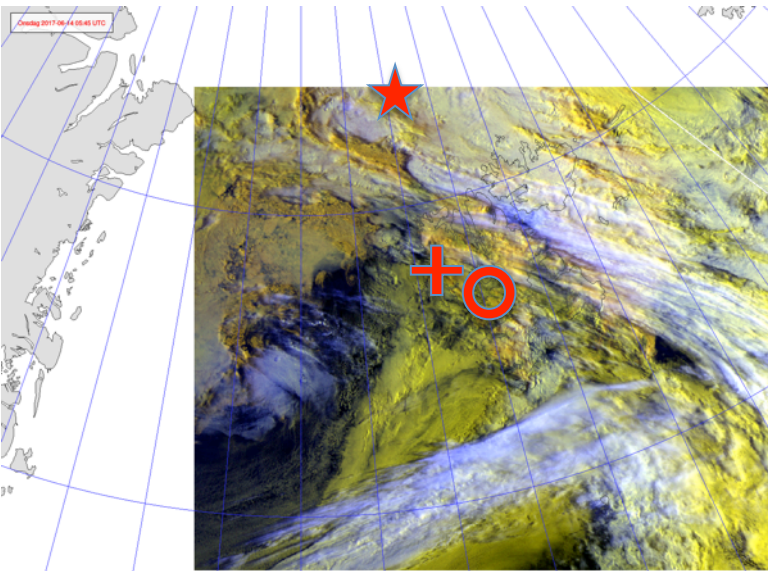
Jun 13



Satellite image

Jun 14
05:45 UTC

- ★ Polarstern
- + Ny-Ålesund
- Longyearbyen



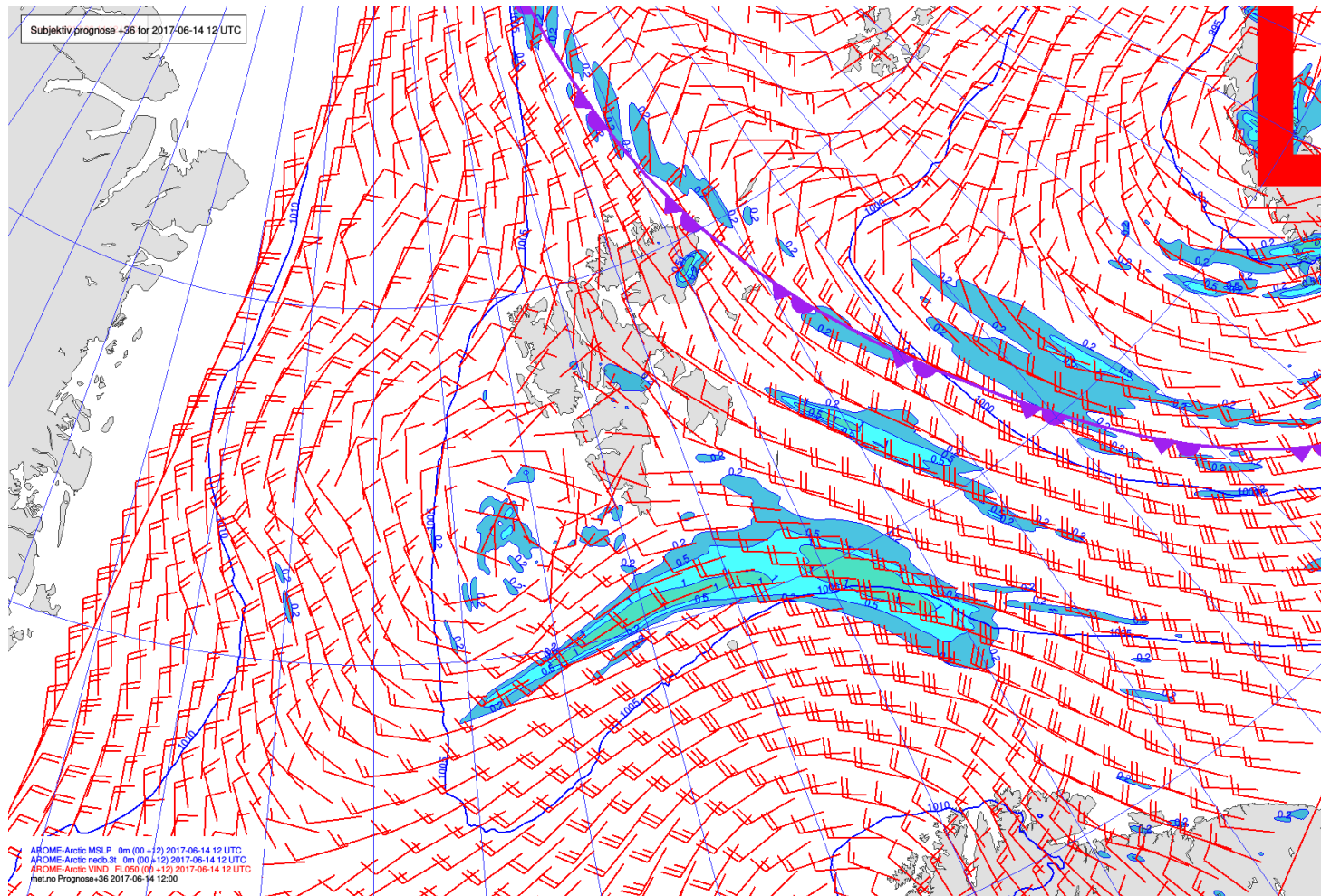
VIS + IR

NOAA-19

IR 5+4+3

MSLP / v_{FL050} / Fronts / Precipitation

Jun 14
12 UTC

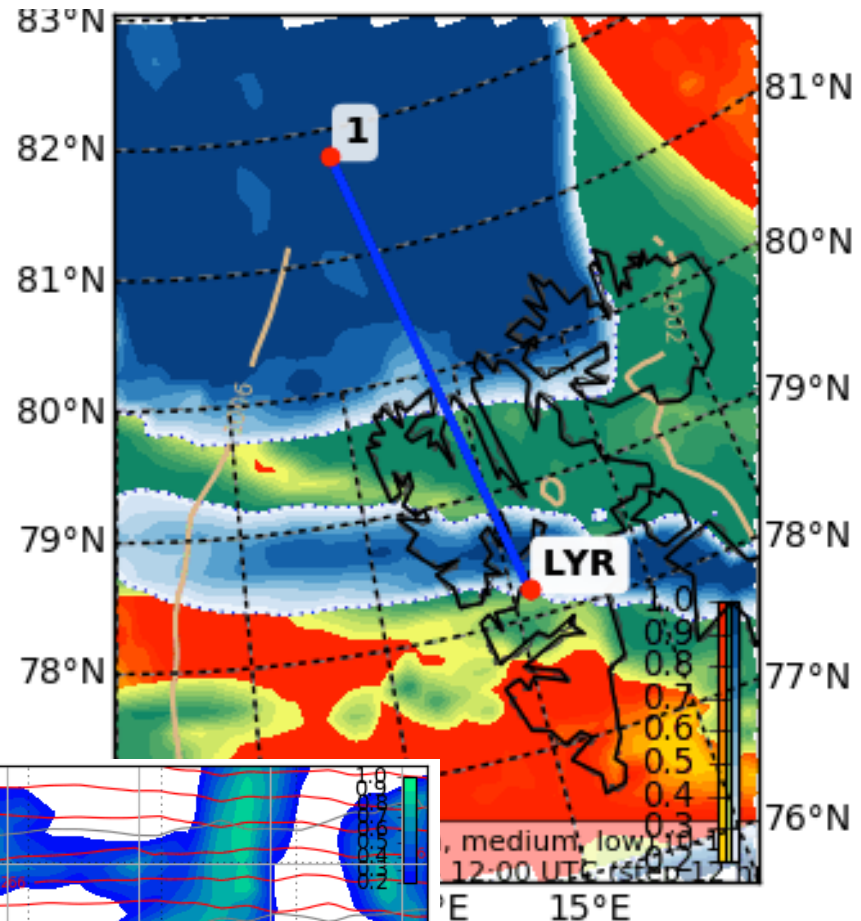


AROME-
Arctic

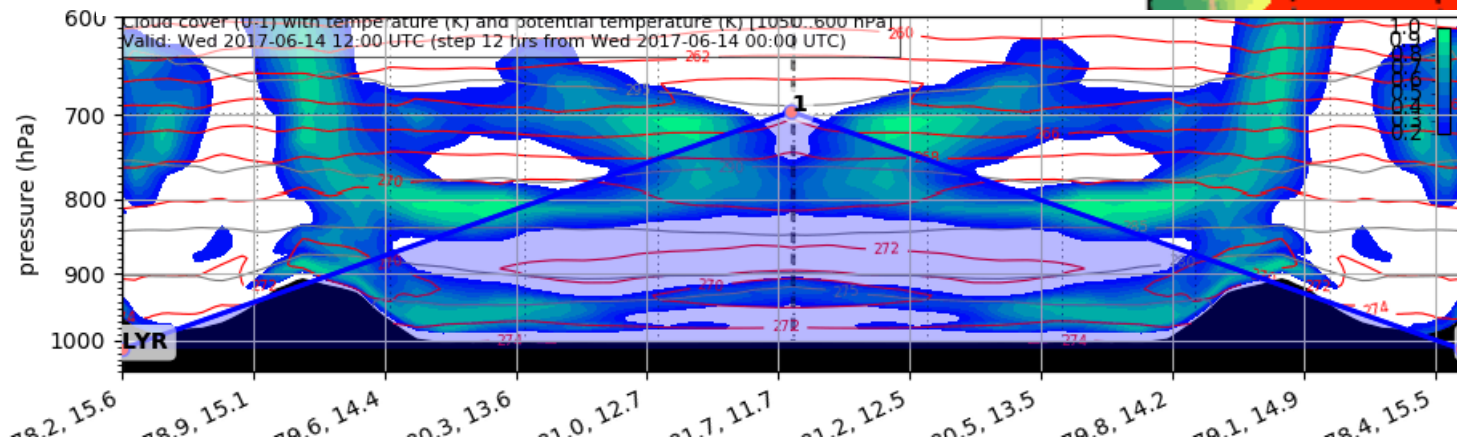
Cloud cover

Jun 14
12 UTC

Low
Medium
High



Cloud cover / T (K) / θ (K)

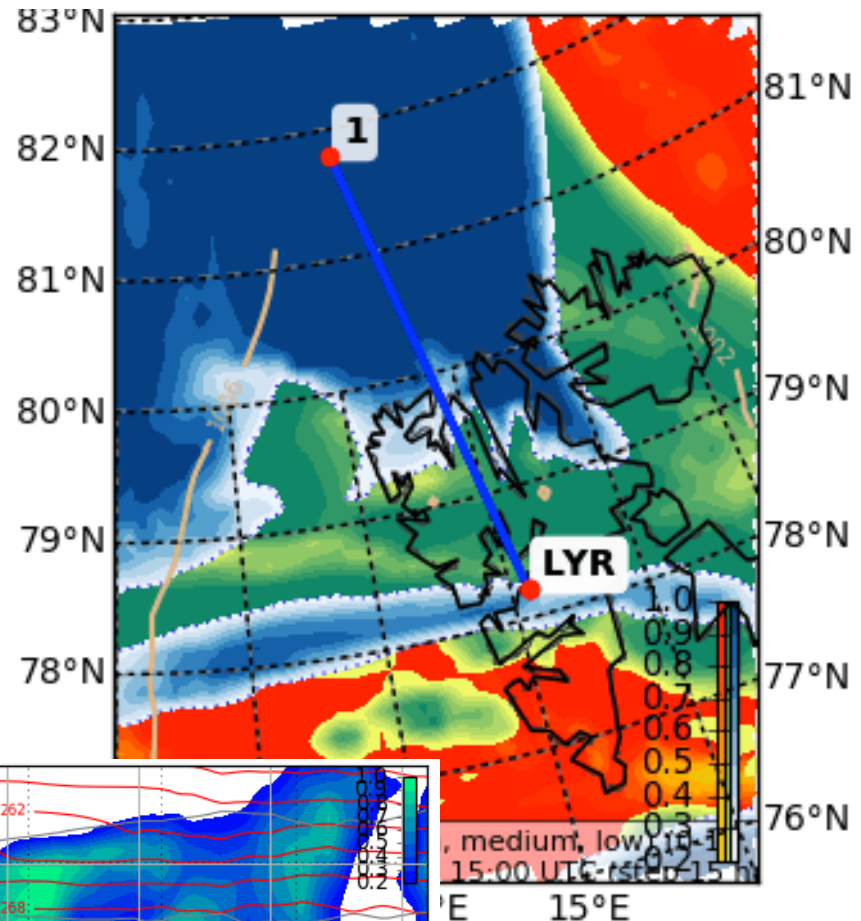


ECMWF

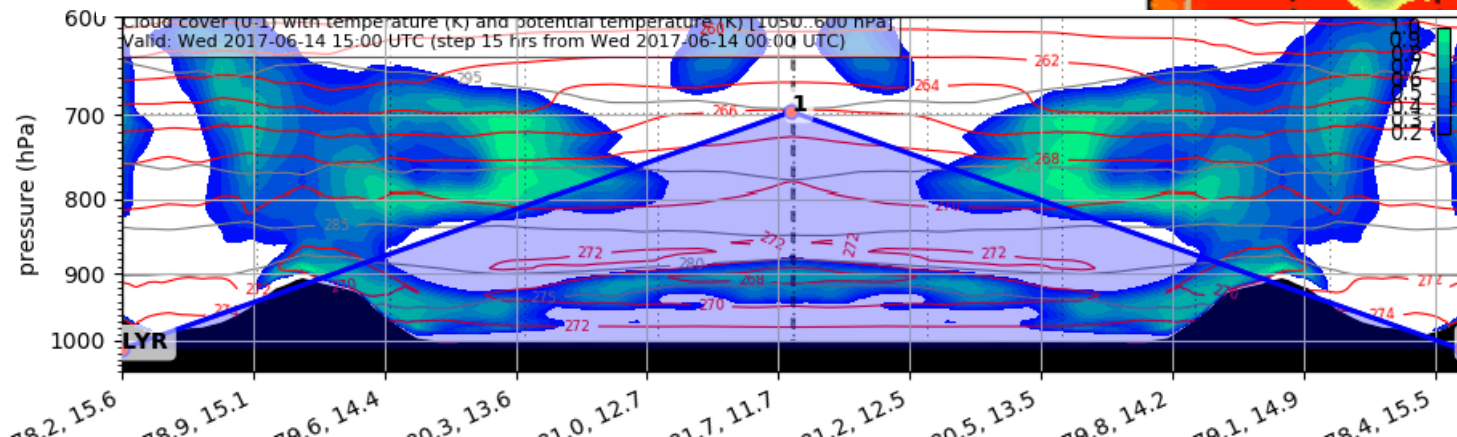
Cloud cover

Jun 14
15 UTC

Low
Medium
High



Cloud cover / T (K) / θ (K)

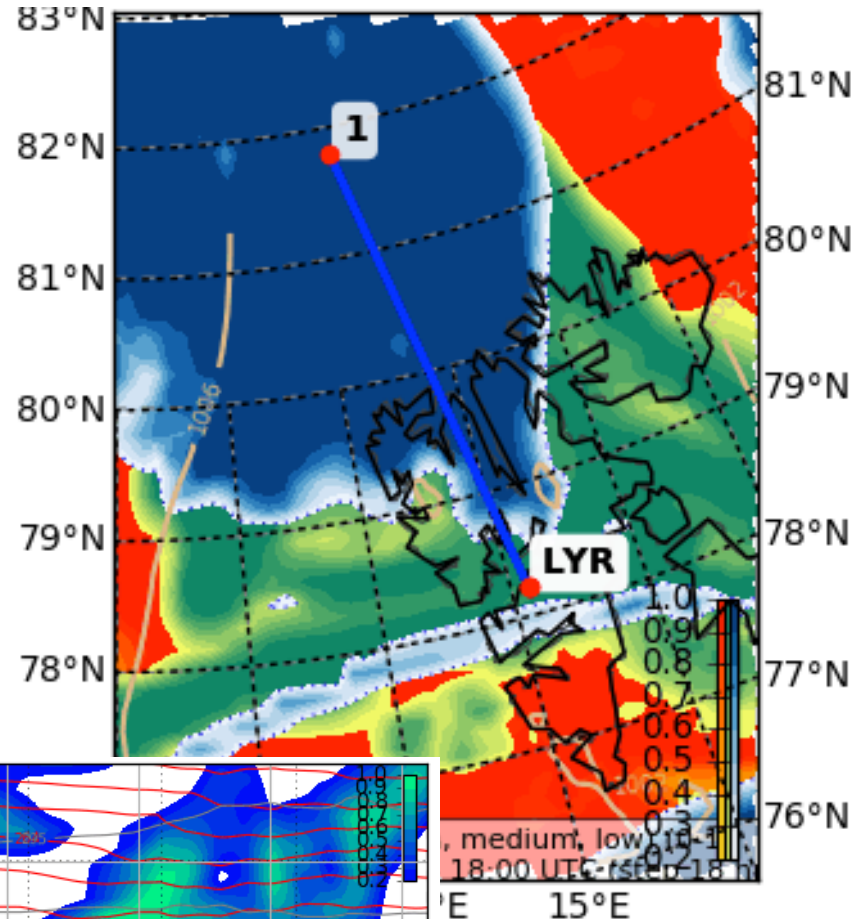


ECMWF

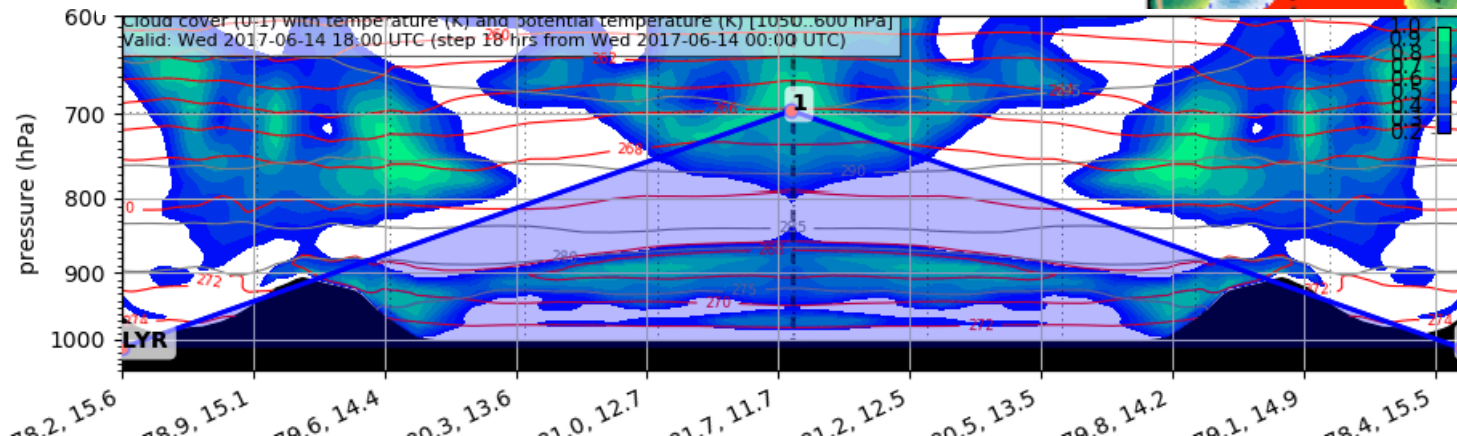
Cloud cover

Jun 14
18 UTC

Low
Medium
High



Cloud cover / T (K) / θ (K)

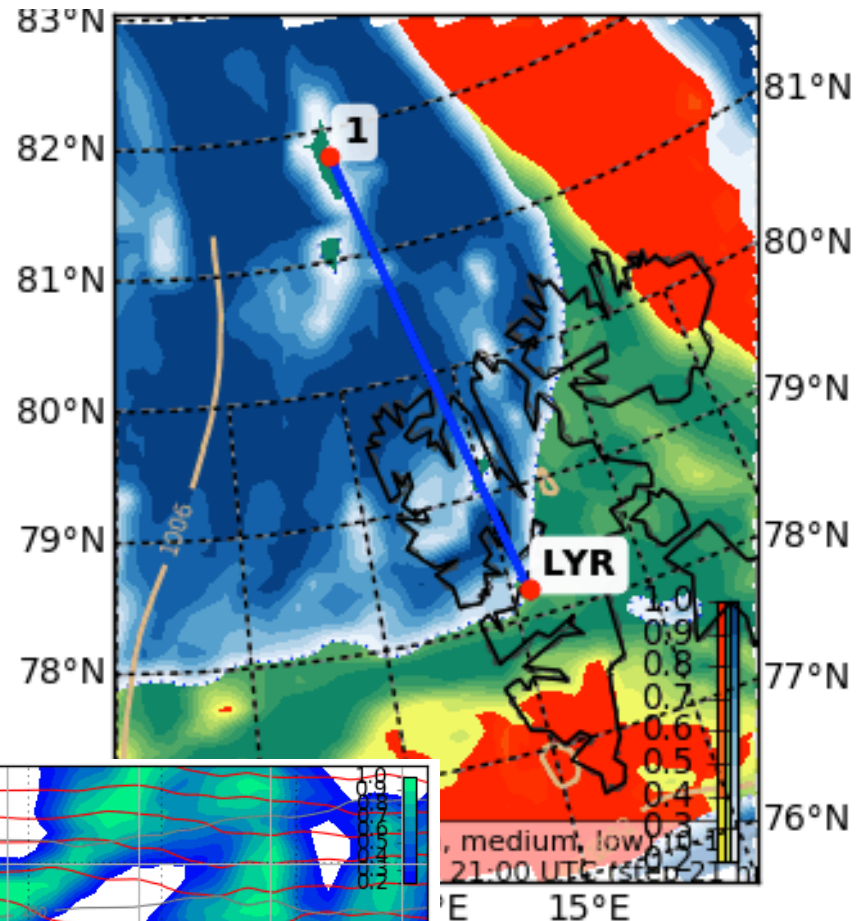


ECMWF

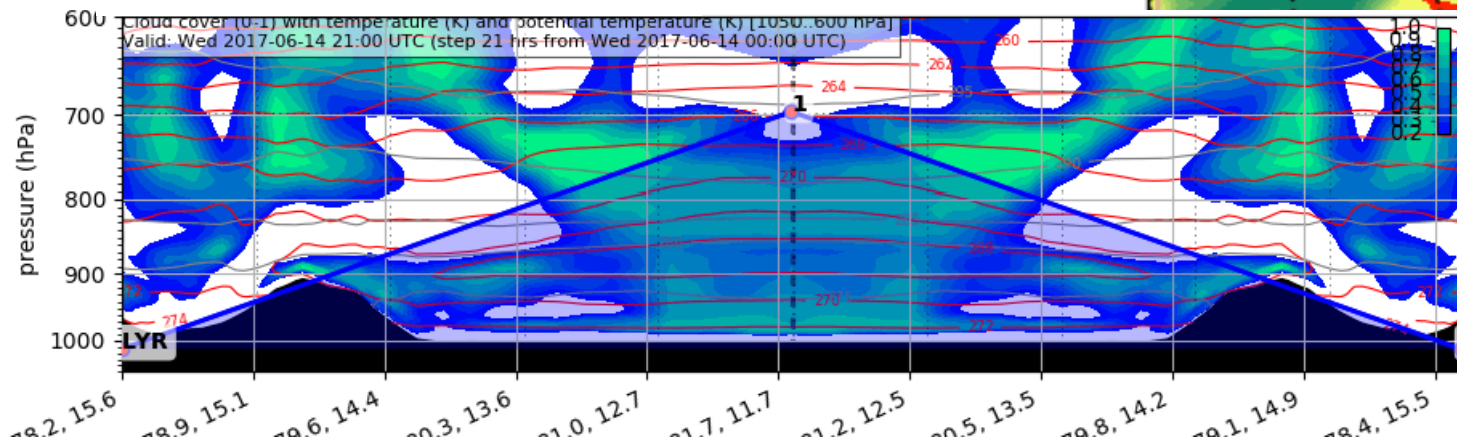
Cloud cover

Jun 14
21 UTC

Low
Medium
High



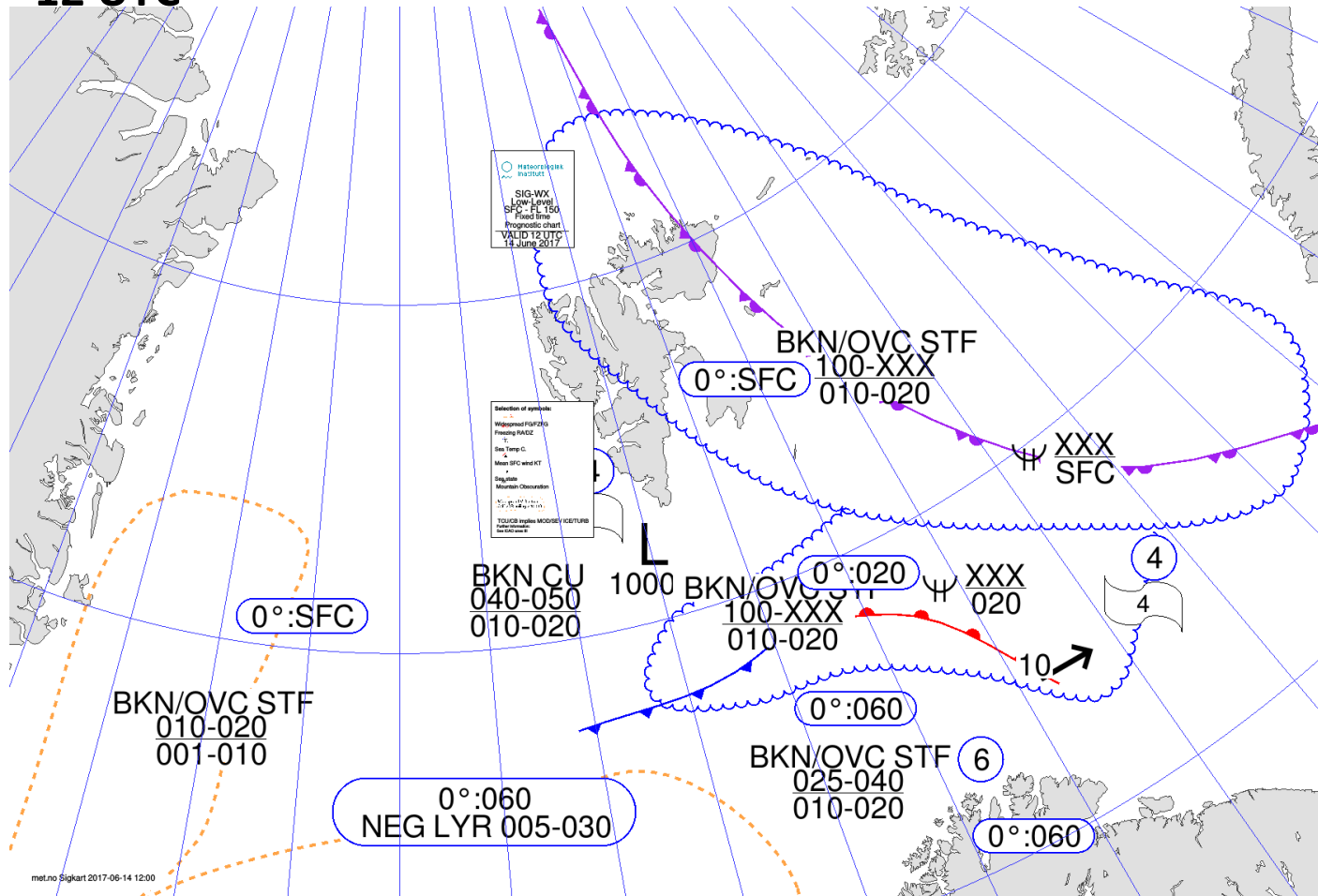
Cloud cover / T (K) / θ (K)



ECMWF

Significant weather chart

Jun 14
12 UTC



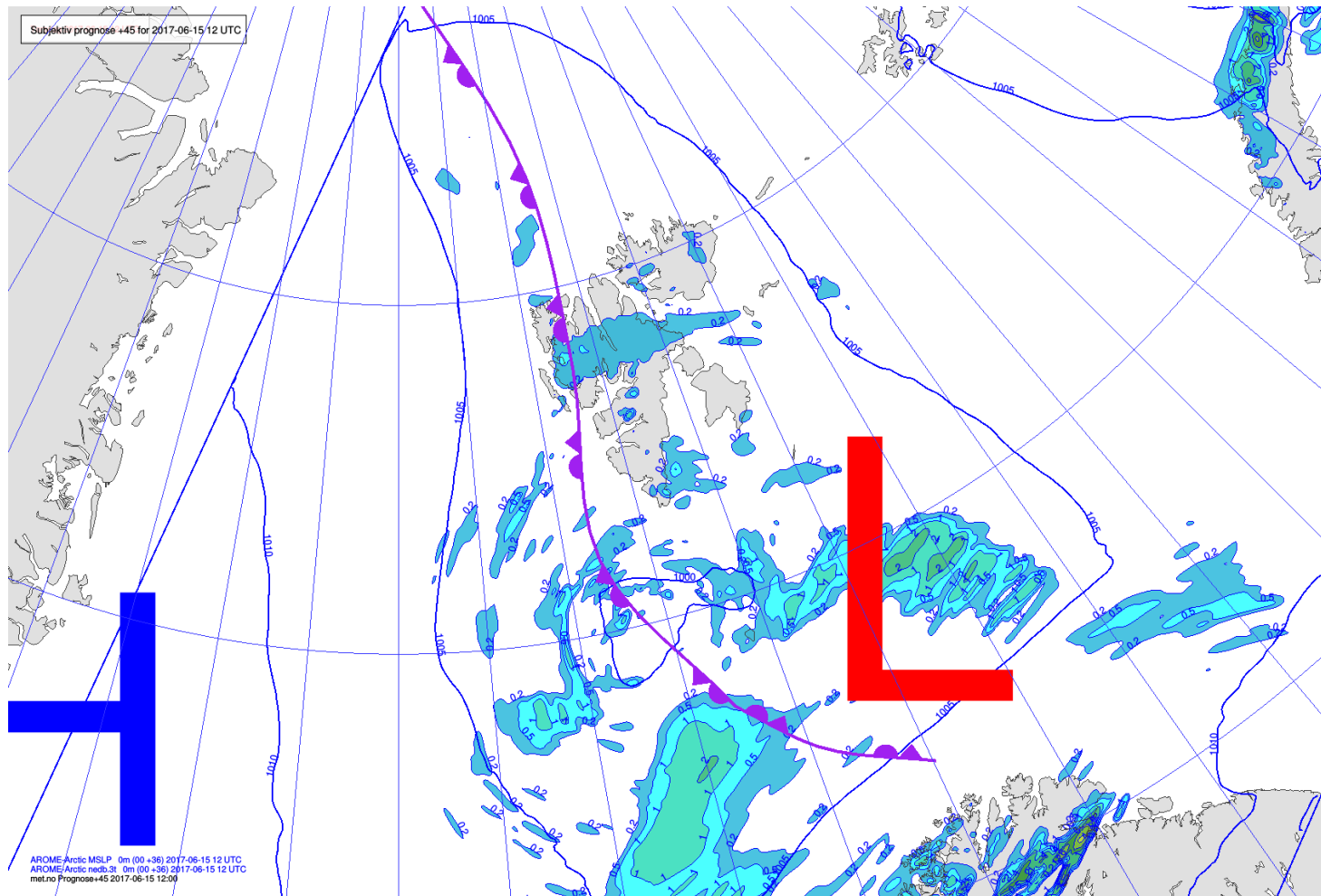
METAR and TAF

- Longyearbyen/Longyear (ENSB):
 - METAR 140650Z 25012KT 9999 FEW012 BKN020 05/02 Q1002 RMK WIND 1400FT 23004KT
 - TAF 140500Z 1406/1506 26008KT 9999 FEW005 BKN020 PROB40 1406/1418 4000 DZ BKN004
 - No SIGMET/AIRMET
- Ny-Ålesund/Hamnerabben (ENAS):
 - METAR 140550Z 30010KT 8000 OVC005 02/01 Q1004

Forecast
Thu 15 June 2017

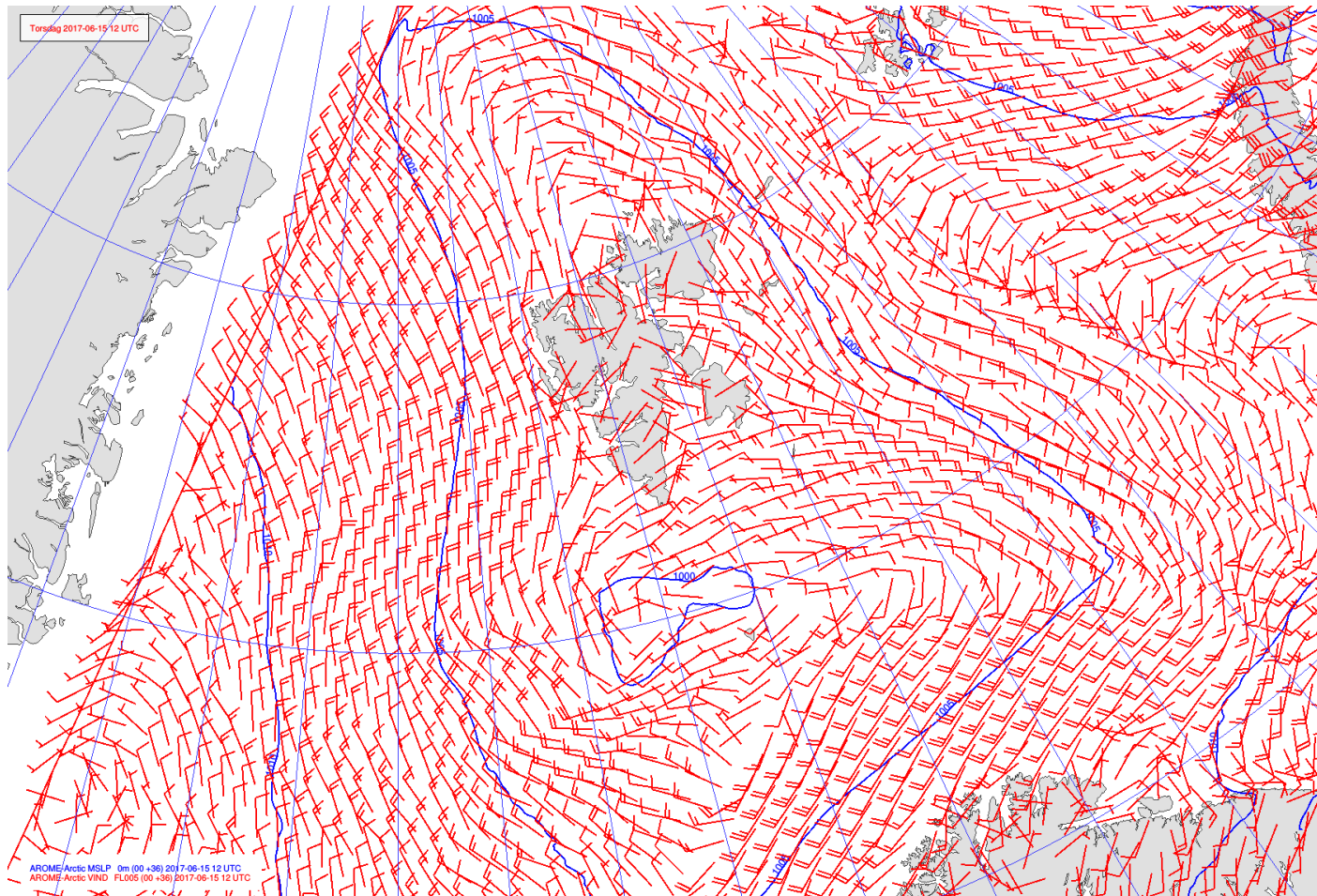
MSLP / Fronts / Precipitation

Jun 15
12 UTC



MSLP / V_{FL005}

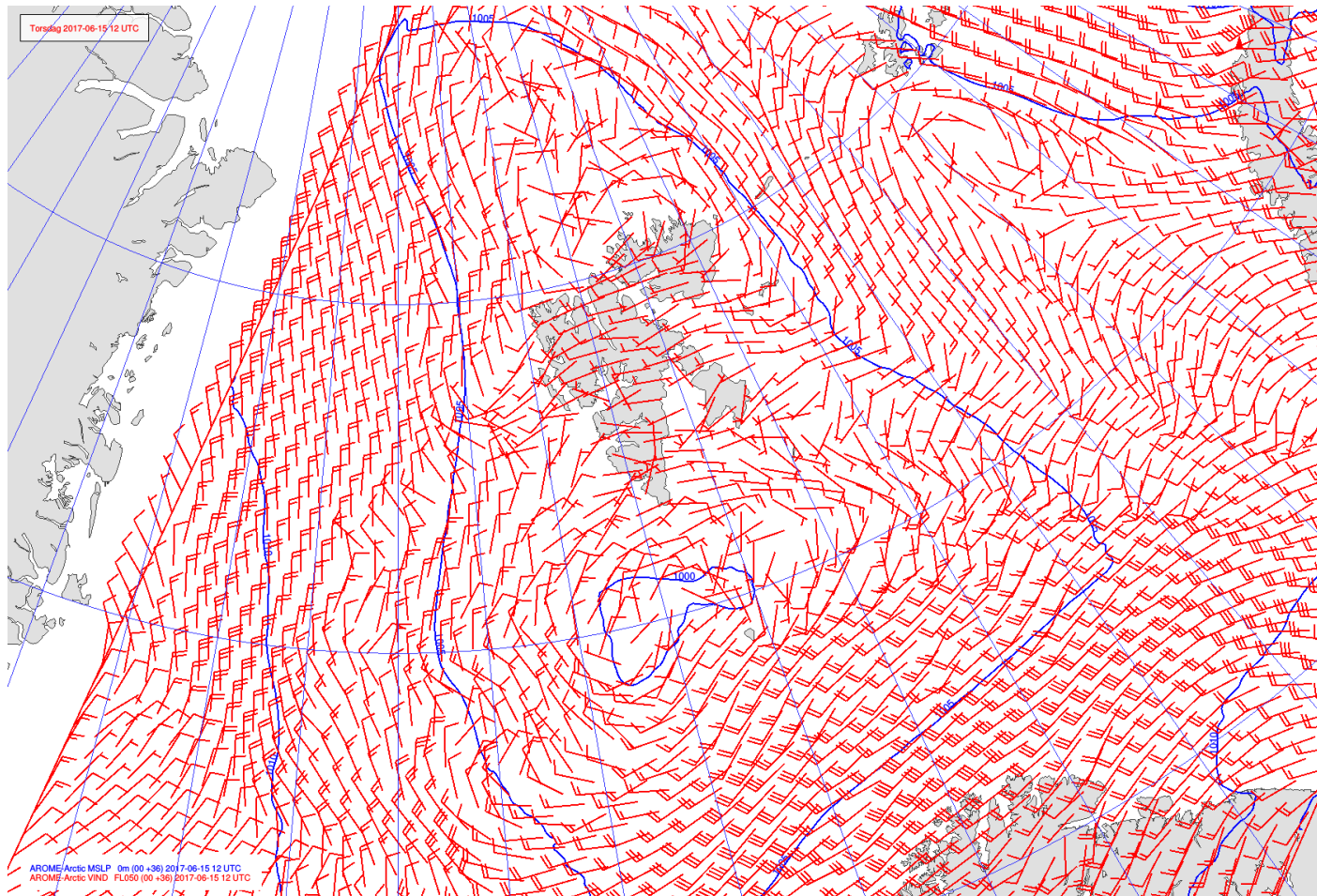
**Jun 15
12 UTC**



AROME-
Arctic

MSLP / V_{FL050}

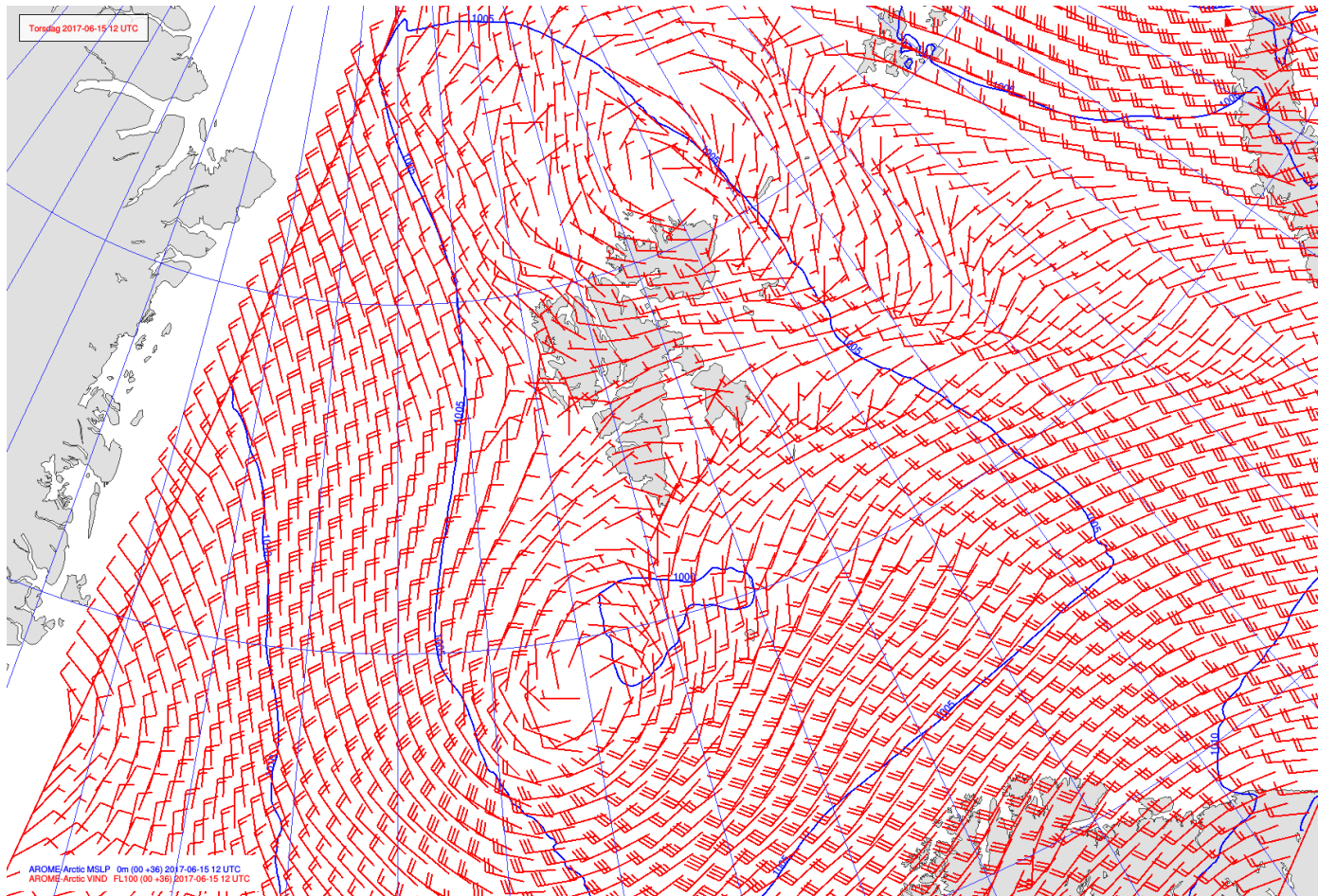
Jun 15
12 UTC



AROME-
Arctic

MSLP / V_{FL100}

Jun 15
12 UTC

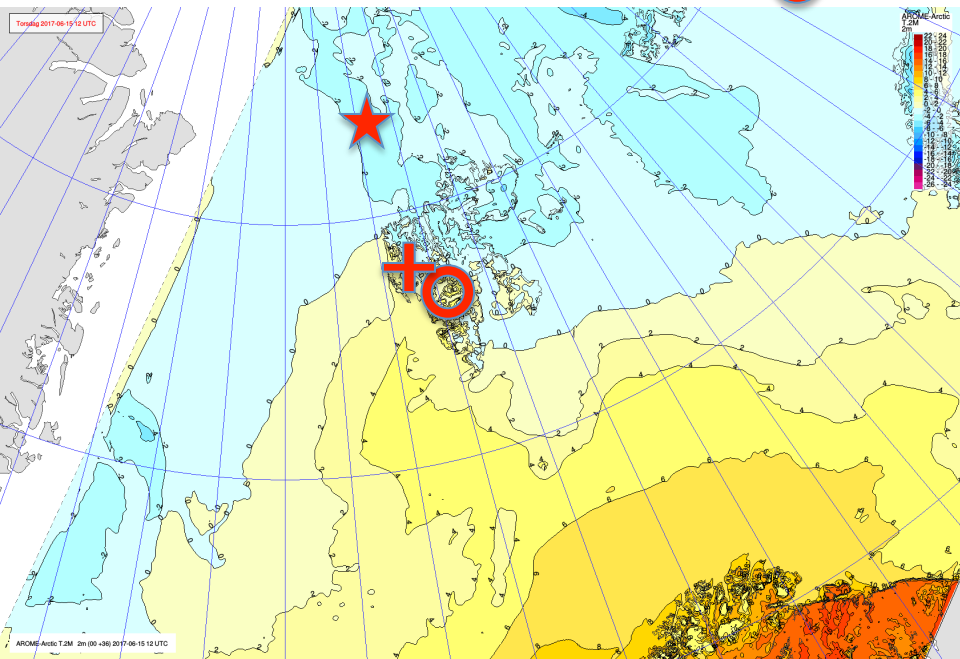


AROME-
Arctic

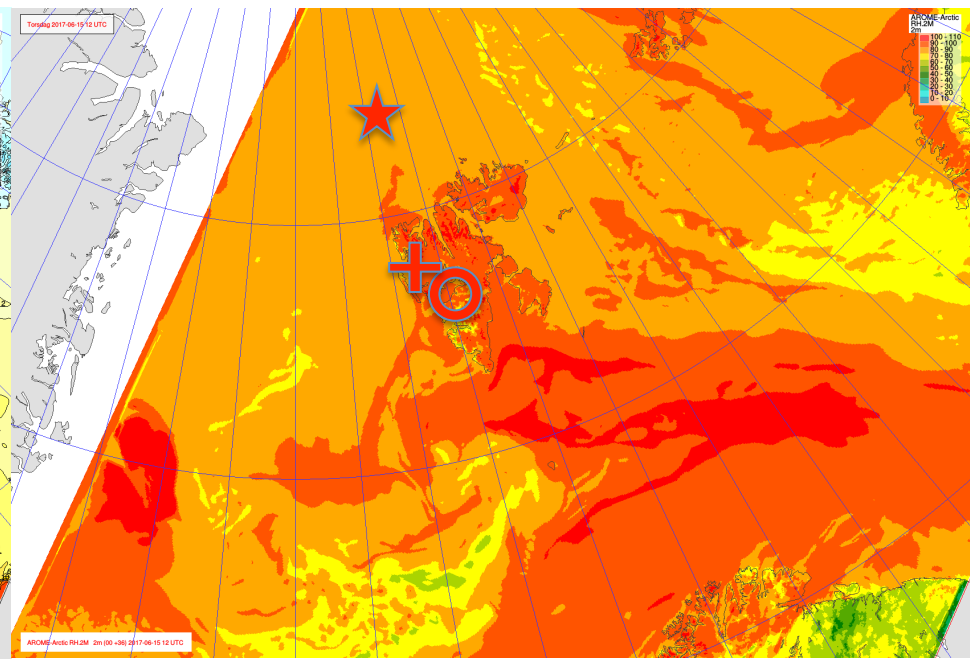
T_{2m} / RH_{2m}

Jun 15
12 UTC

- ★ Polarstern
- + Ny-Ålesund
- Longyearbyen



Temperature



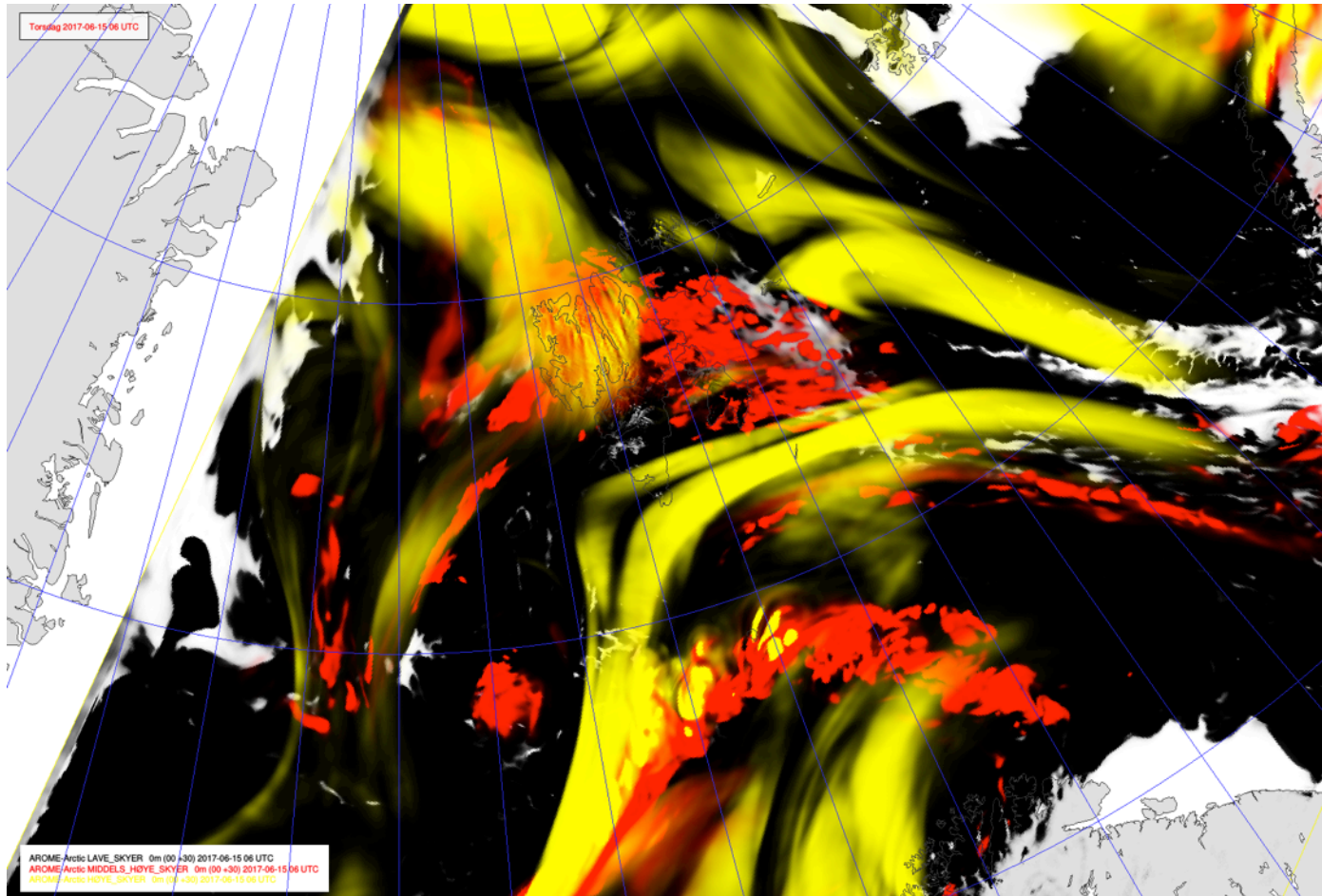
AROME-Arctic

Relative humidity

Cloud cover

**Jun 15
06 UTC**

Low / **Medium** / High

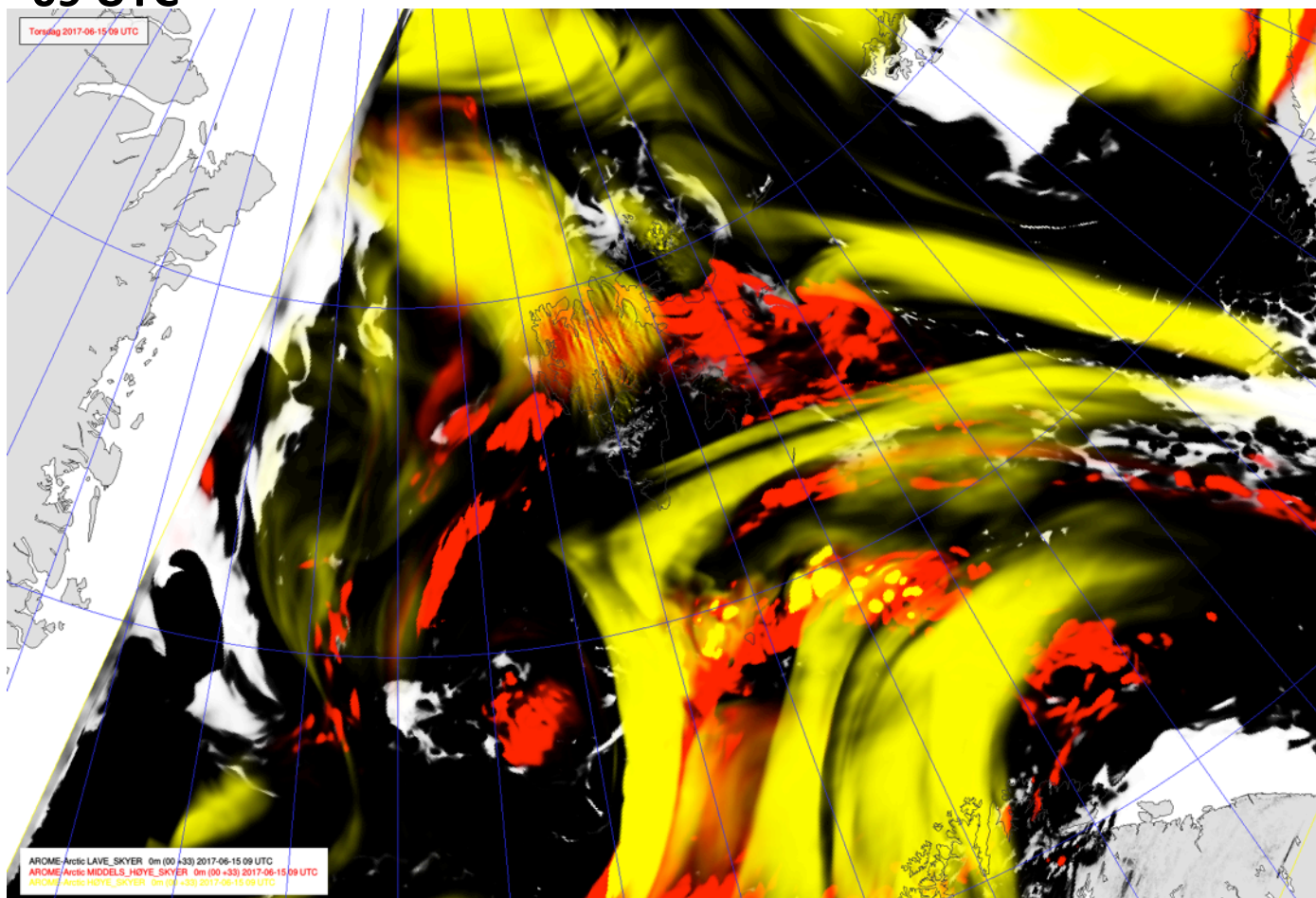


AROME-
Arctic

Cloud cover

Jun 15
09 UTC

Low / Medium / High

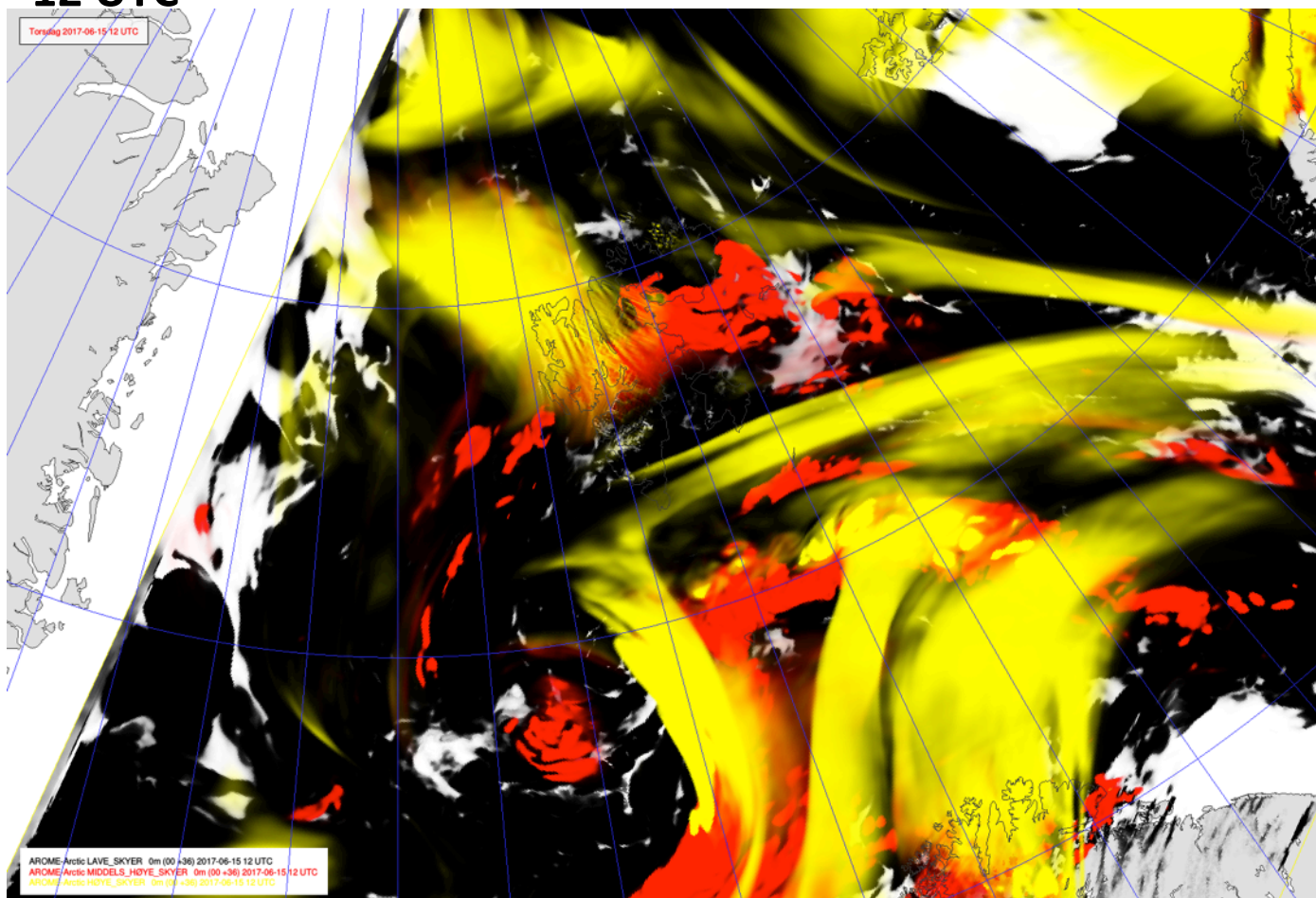


AROME-
Arctic

Cloud cover

Jun 15
12 UTC

Low / **Medium** / High

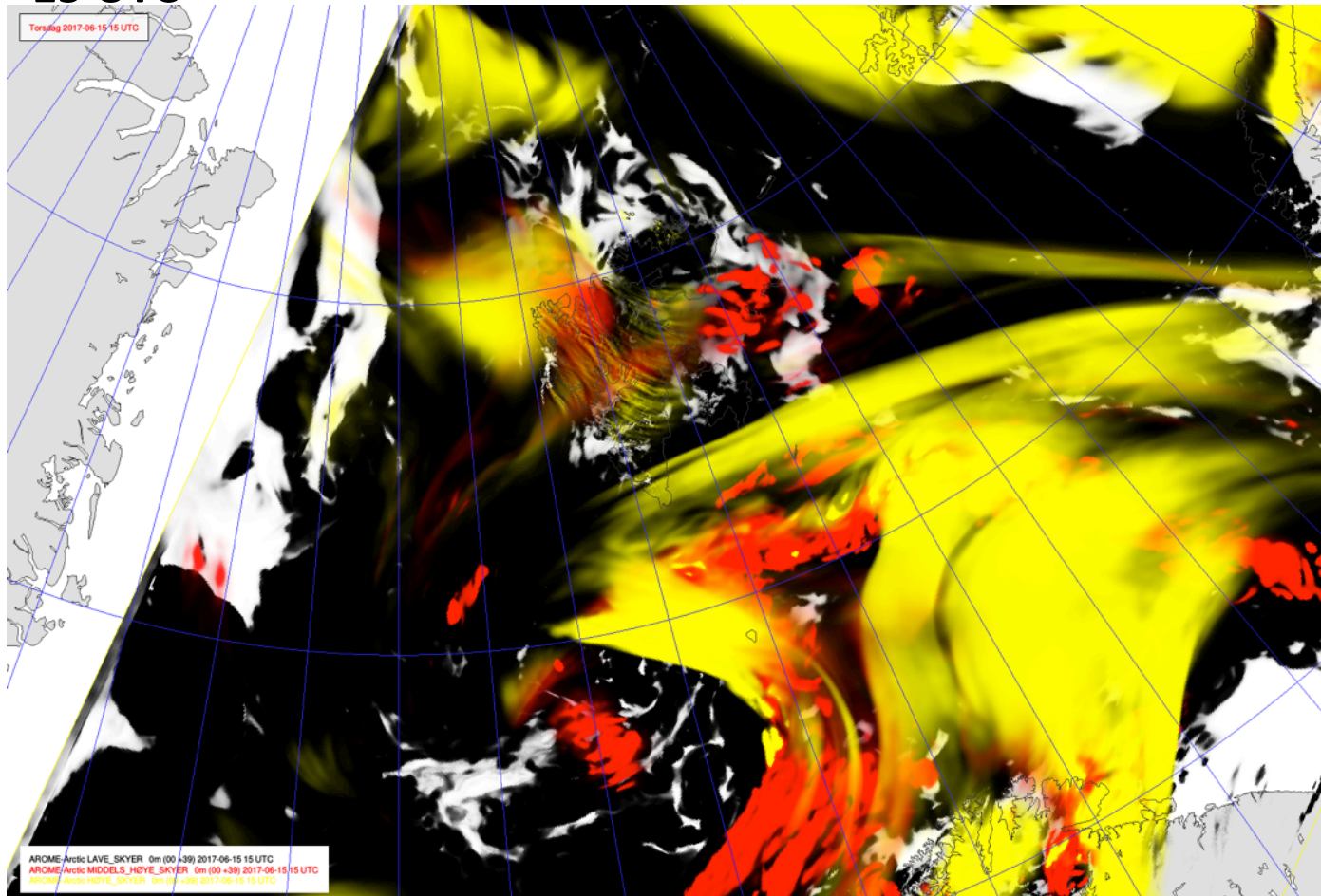


AROME-
Arctic

Cloud cover

Jun 15
15 UTC

Low / Medium / High

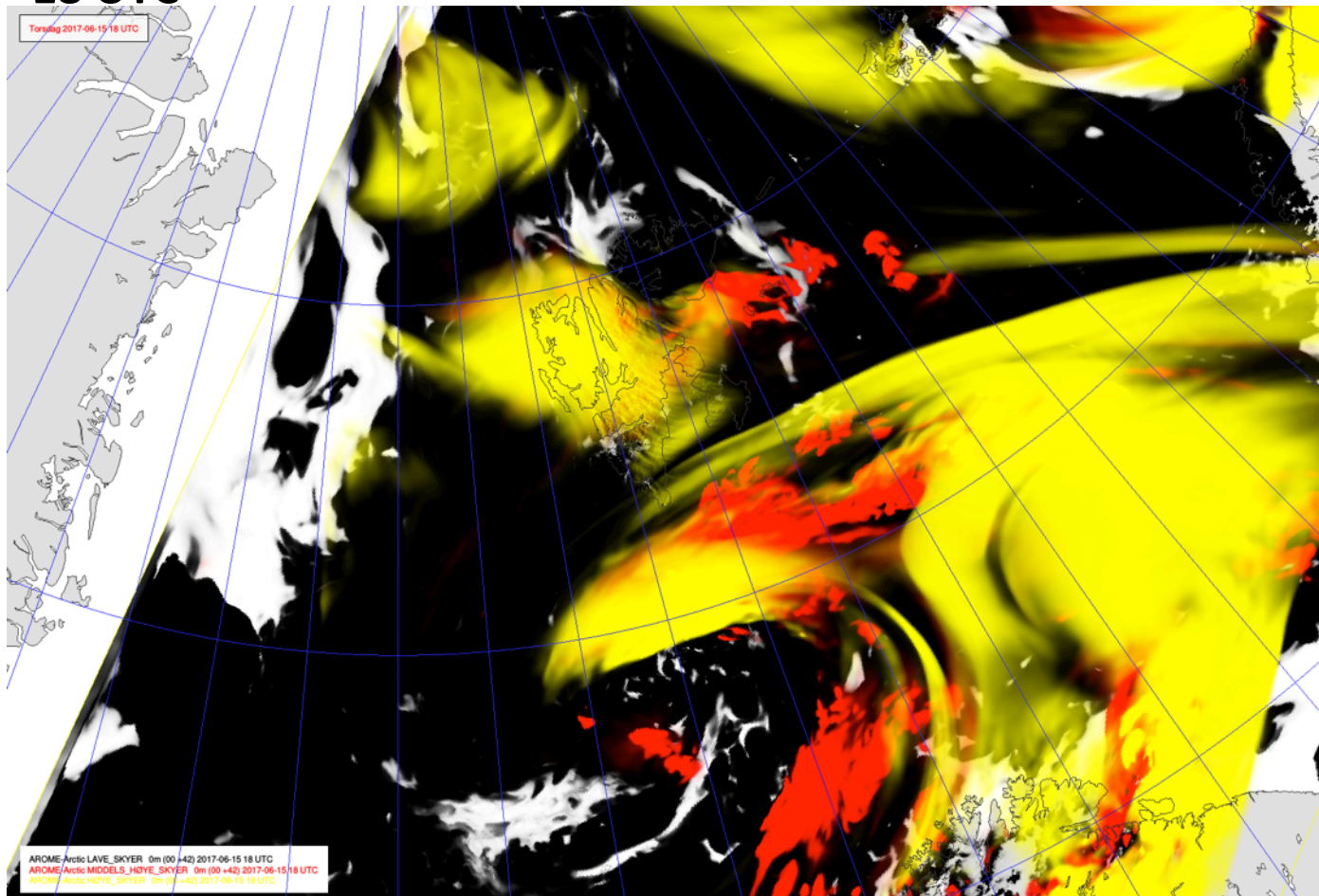


AROME-
Arctic

Cloud cover

Jun 15
18 UTC

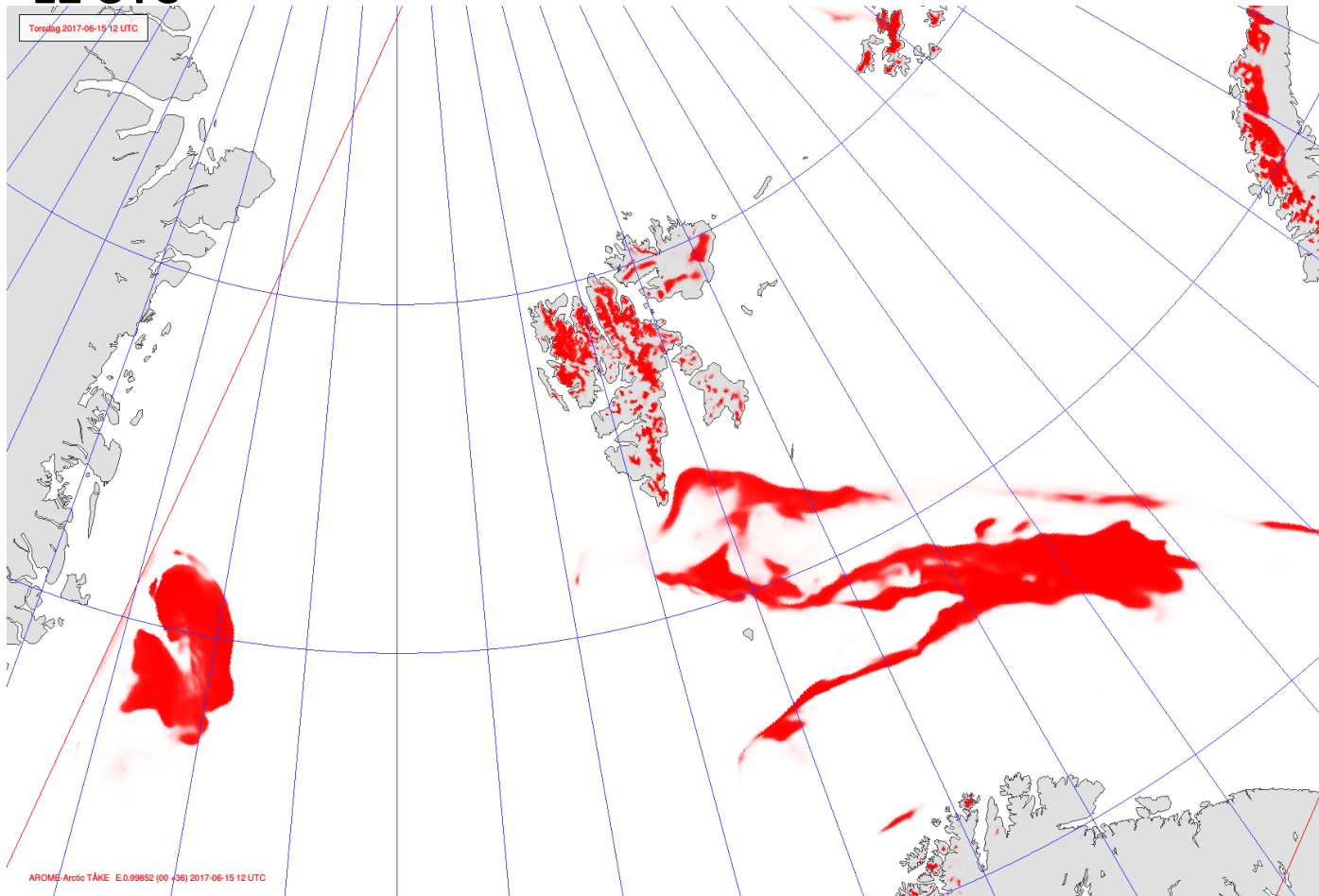
Low / Medium / High



AROME-
Arctic

Fog

**Jun 15
12 UTC**

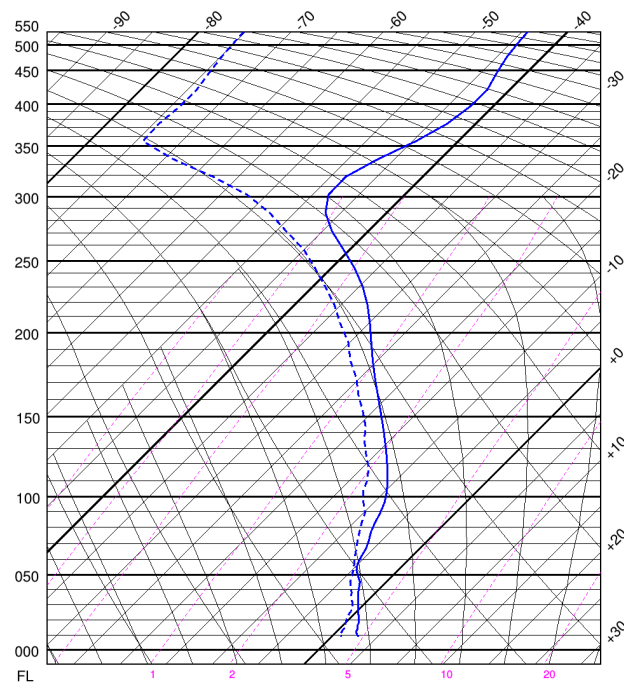


**AROME-
Arctic**

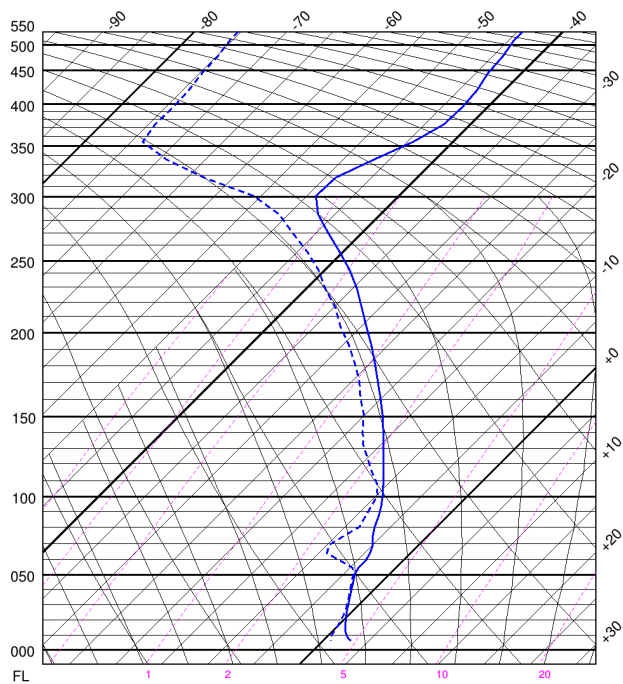
Vertical profile

Jun 15
12 UTC

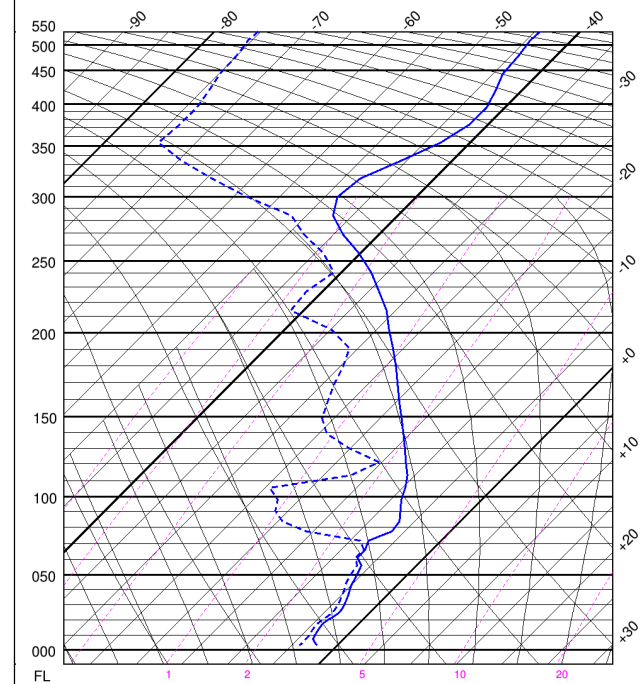
Longyearbyen



Ny-Ålesund



~Polarstern

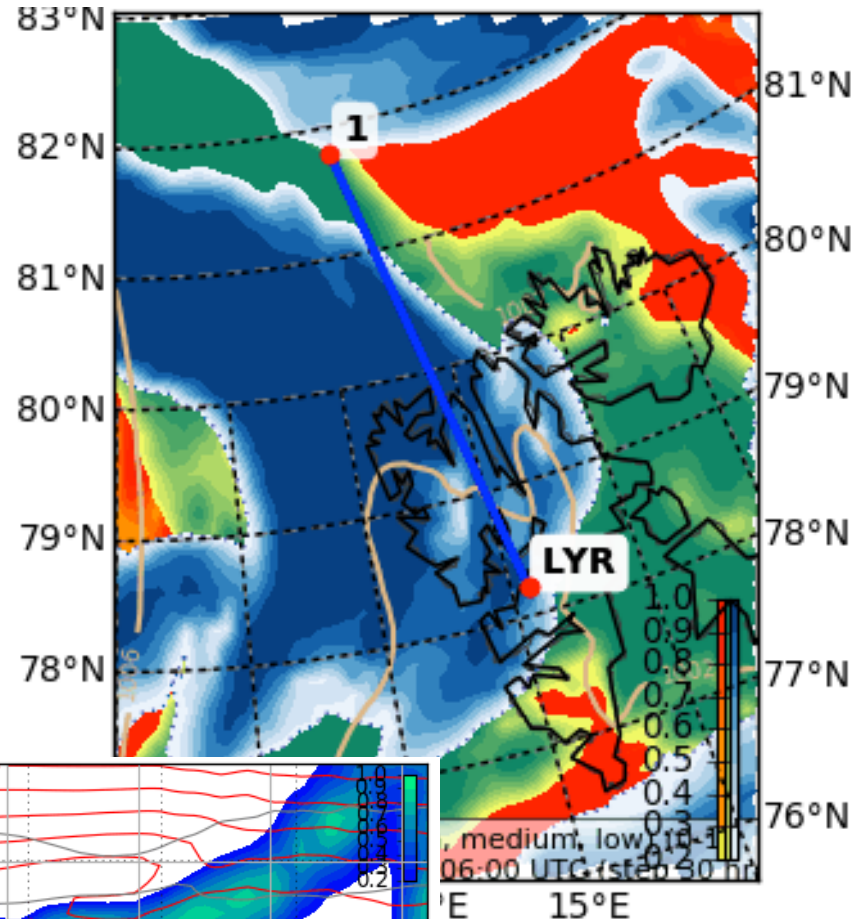


AROME-Arctic

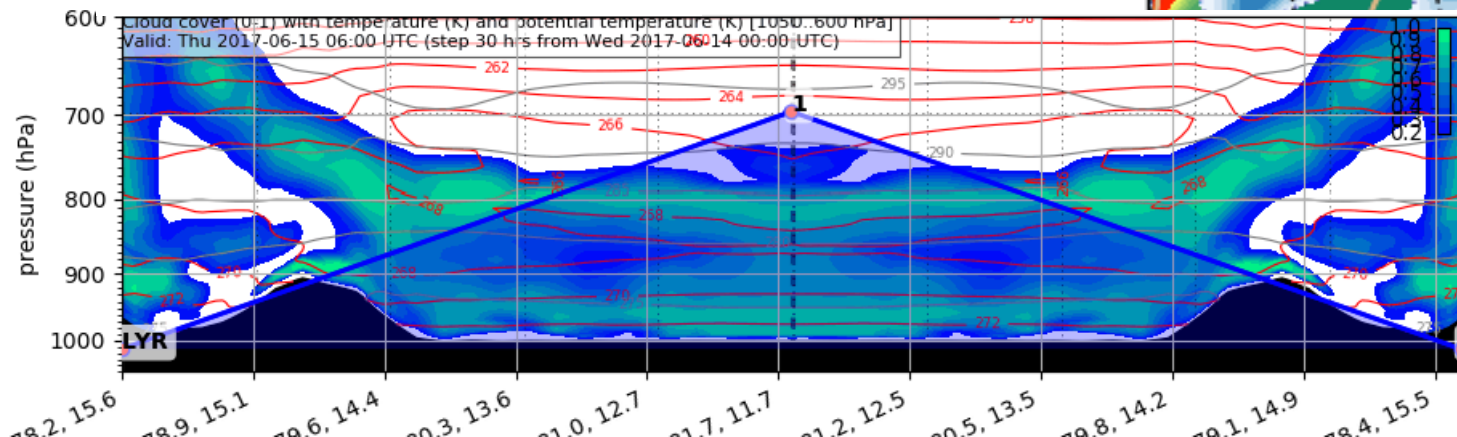
Cloud cover

Jun 15
06 UTC

Low
Medium
High



Cloud cover / T (K) / θ (K)

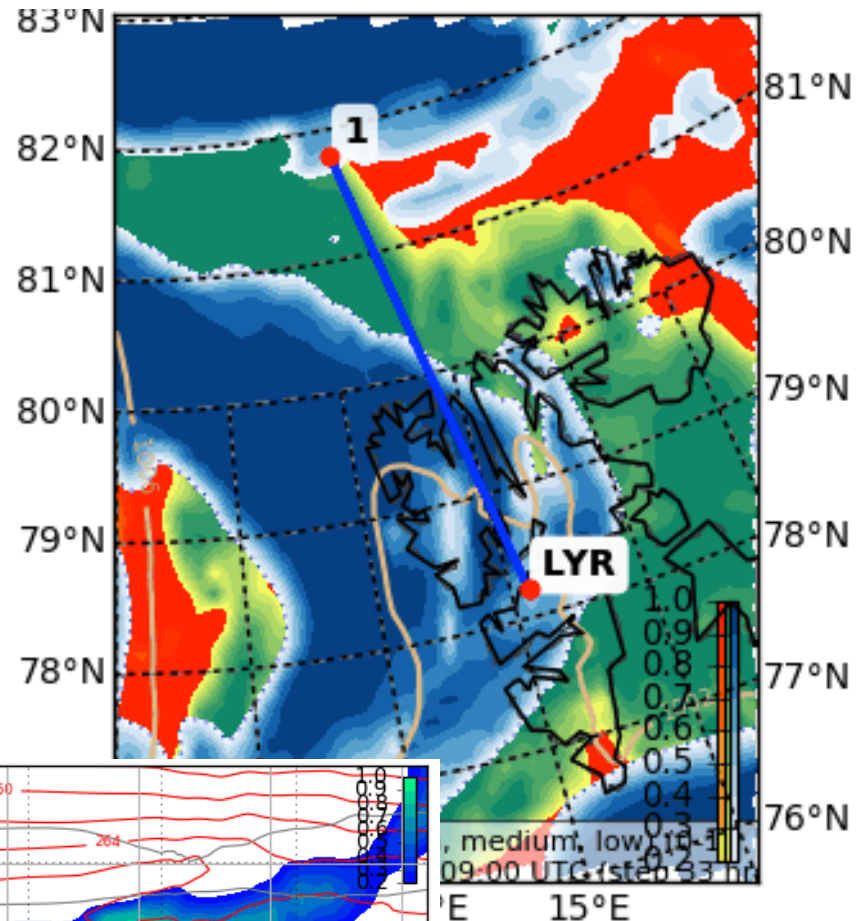


ECMWF

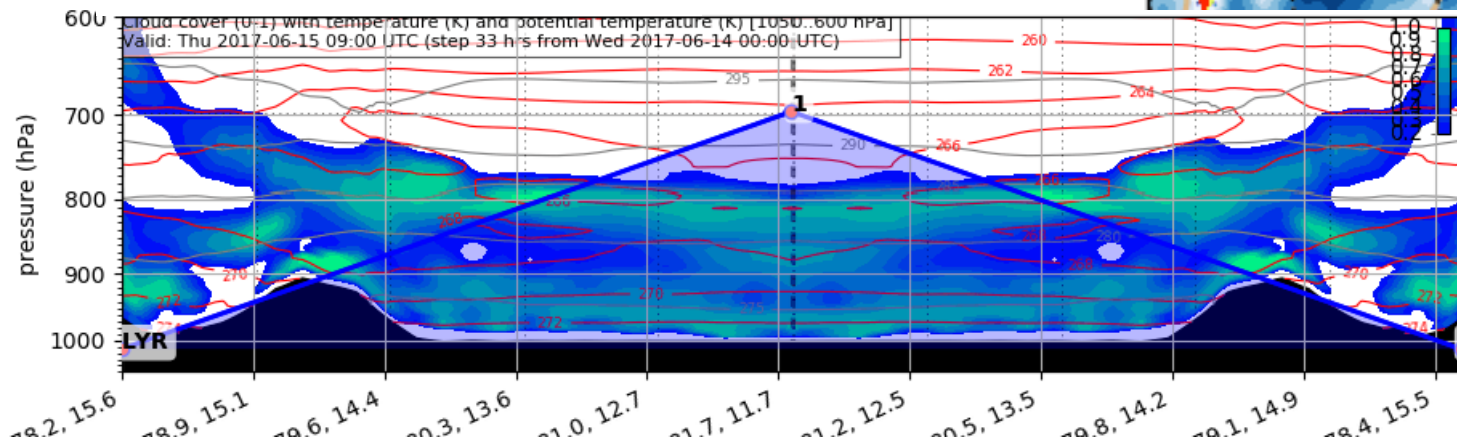
Cloud cover

Jun 15
09 UTC

Low
Medium
High



Cloud cover / T (K) / θ (K)

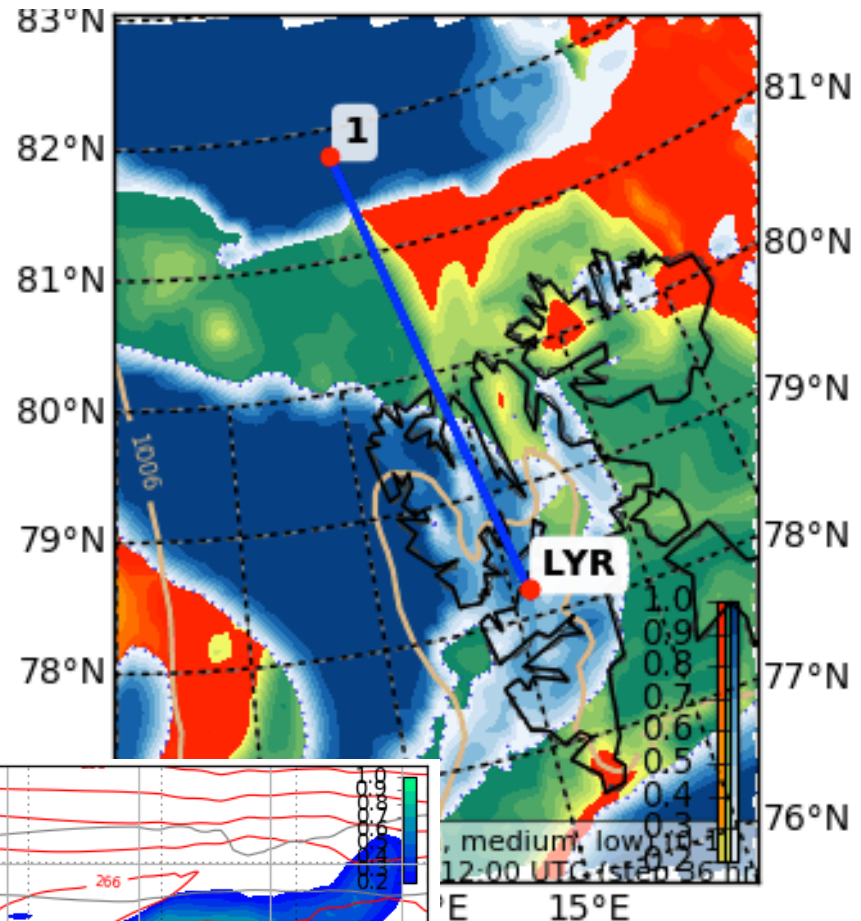


ECMWF

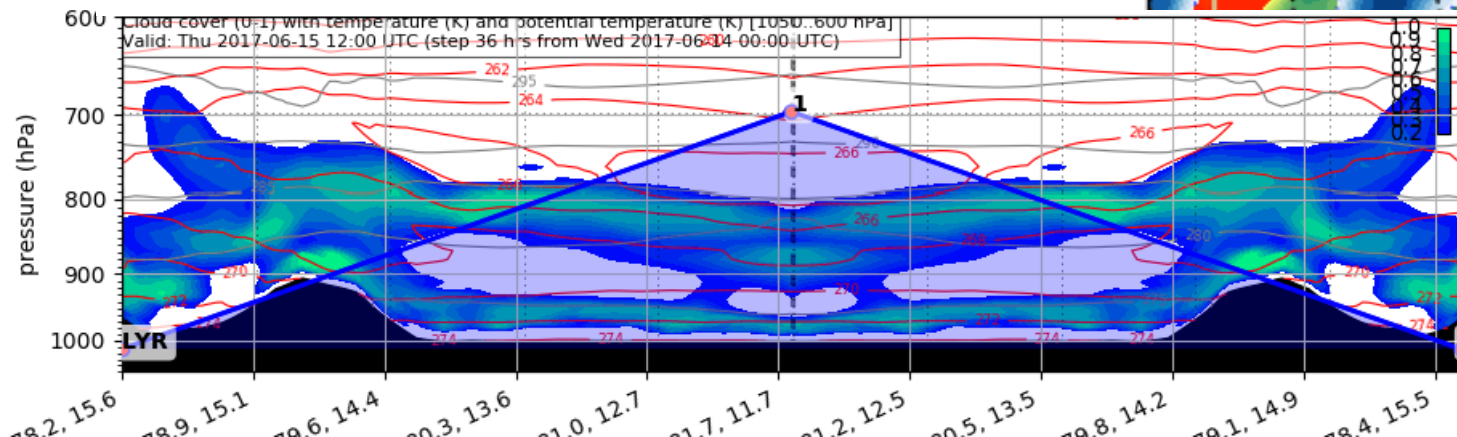
Cloud cover

Jun 15
12 UTC

Low
Medium
High



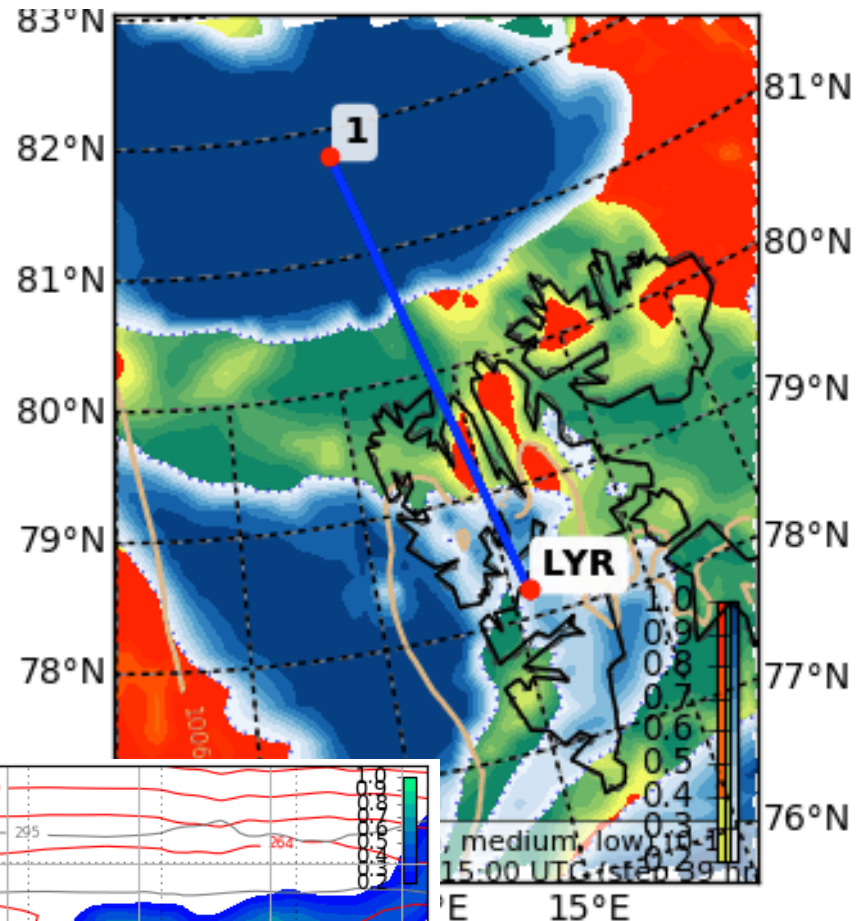
Cloud cover / T (K) / θ (K)



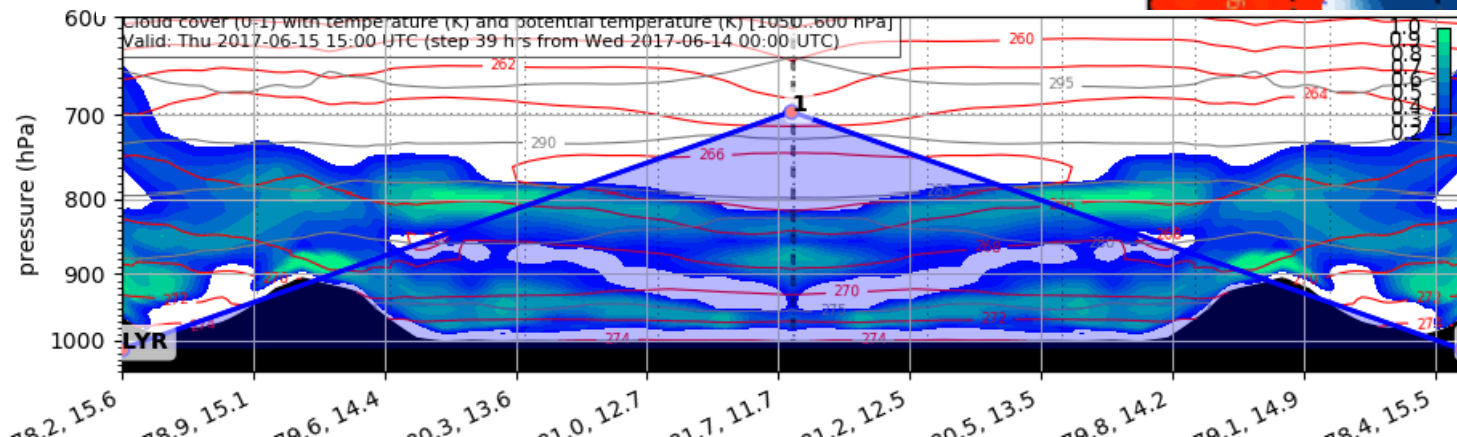
Cloud cover

Jun 15
15 UTC

Low
Medium
High



Cloud cover / T (K) / θ (K)

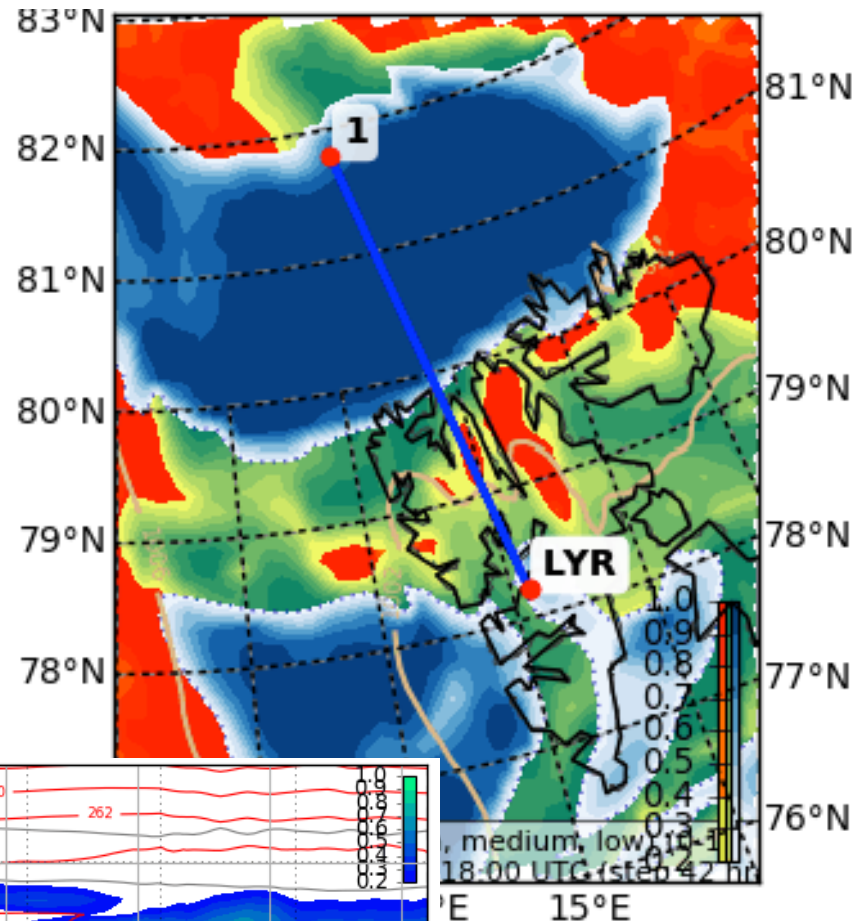


ECMWF

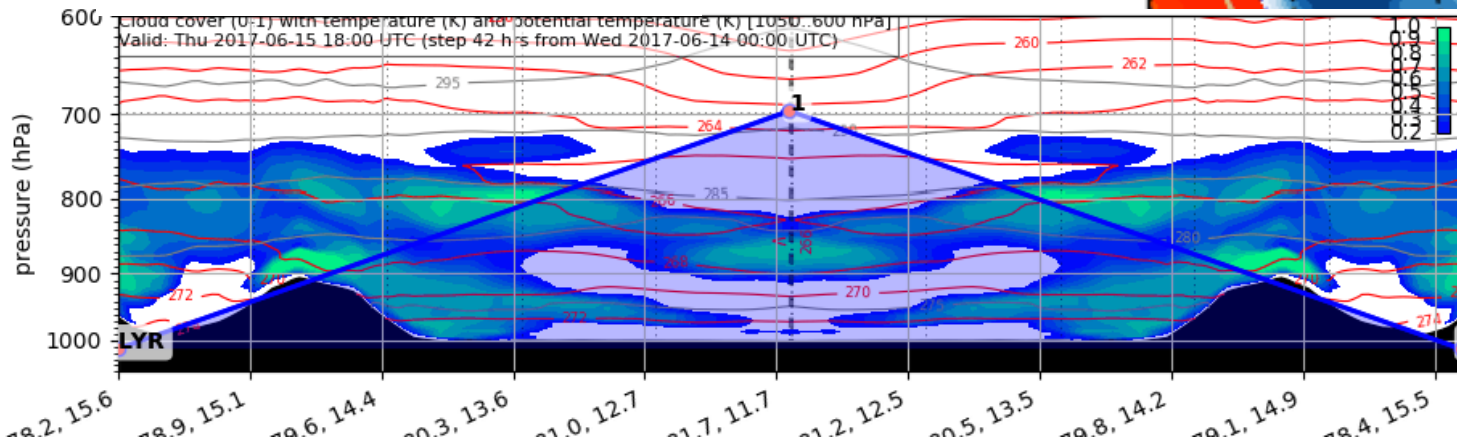
Cloud cover

Jun 15
18 UTC

Low
Medium
High



Cloud cover / T (K) / θ (K)



ECMWF

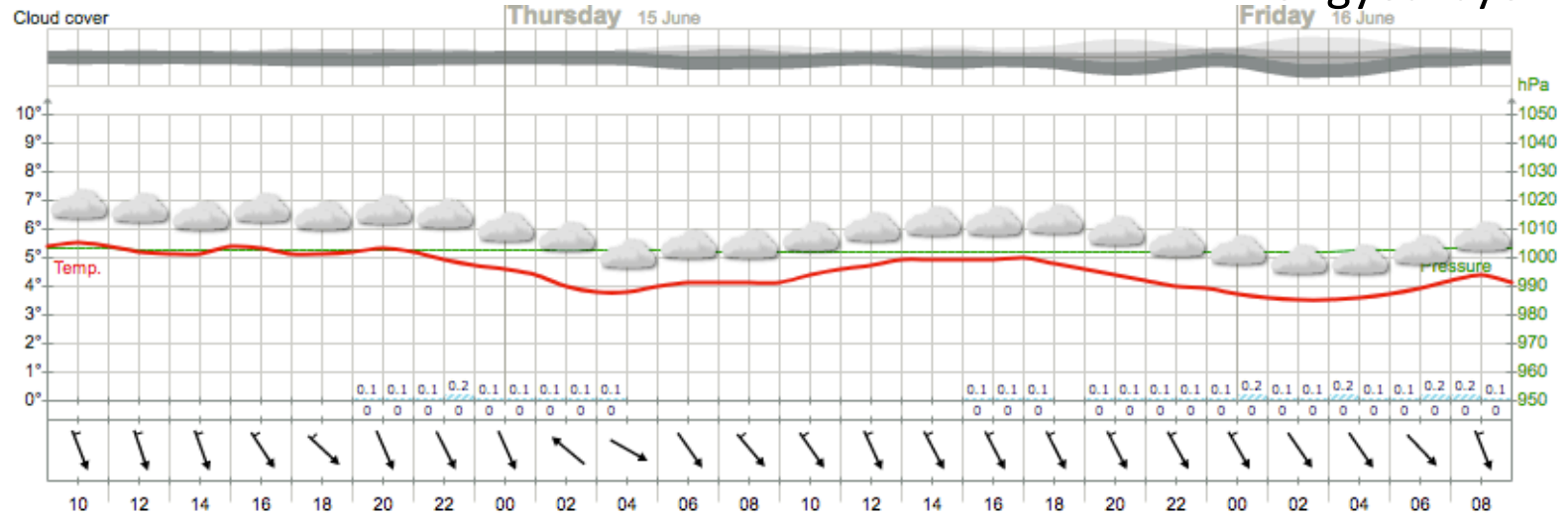
Outlook

Fri 16 – Sun 18 June 2017

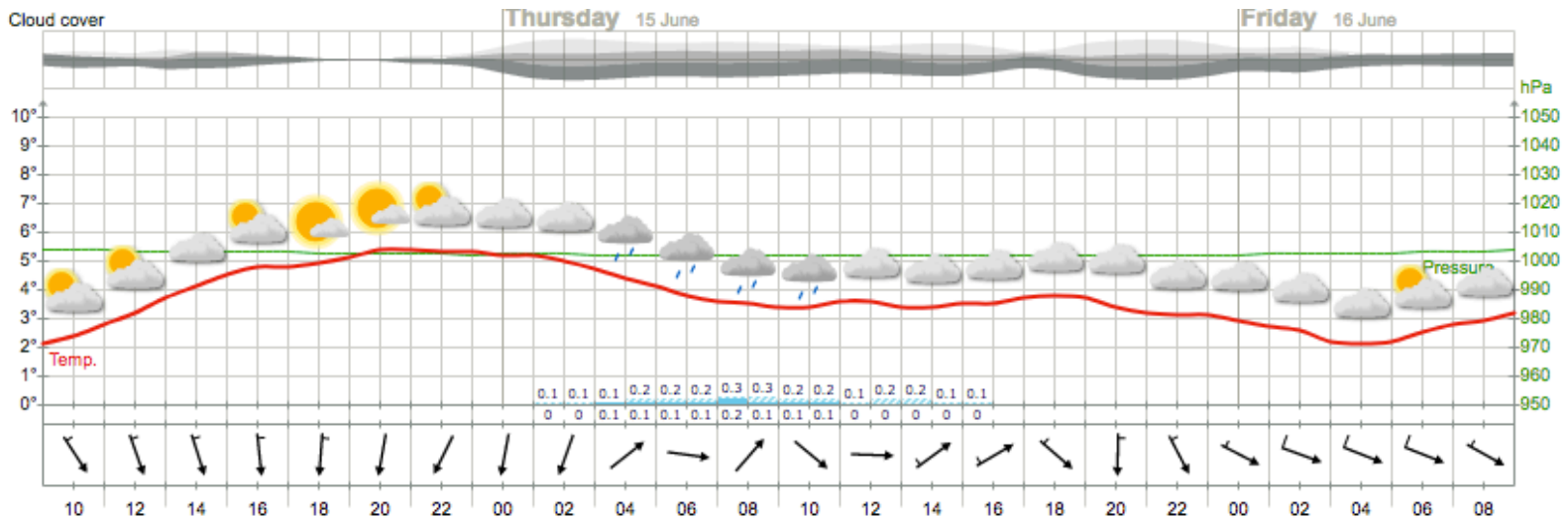
Meteogram

Jun 14-16

Longyearbyen

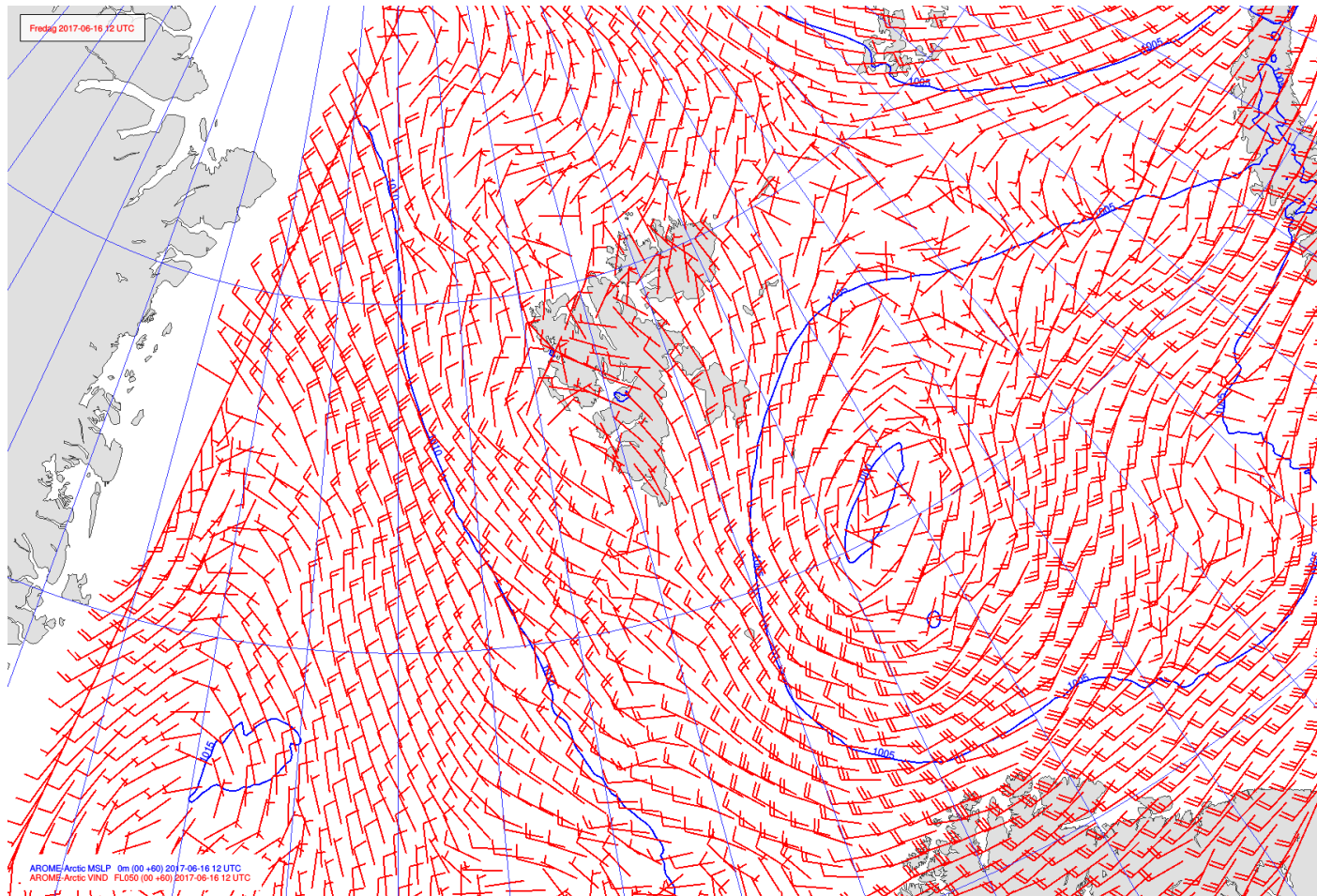


Ny-Ålesund



MSLP / V_{FL050}

Jun 16
12 UTC

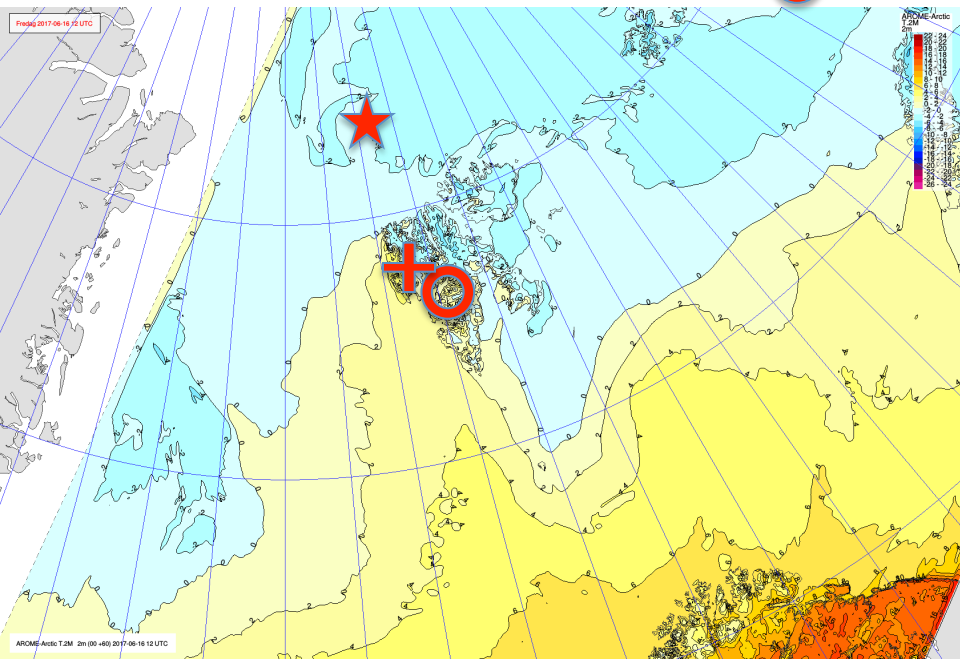


AROME-
Arctic

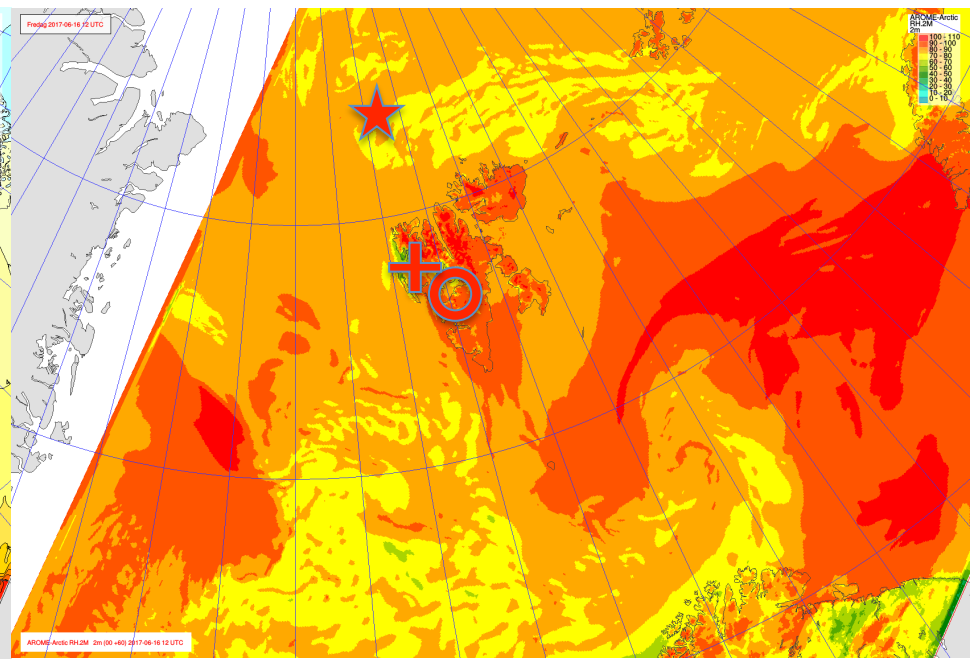
T_{2m} / RH_{2m}

Jun 16
12 UTC

- ★ Polarstern
- + Ny-Ålesund
- Longyearbyen



Temperature



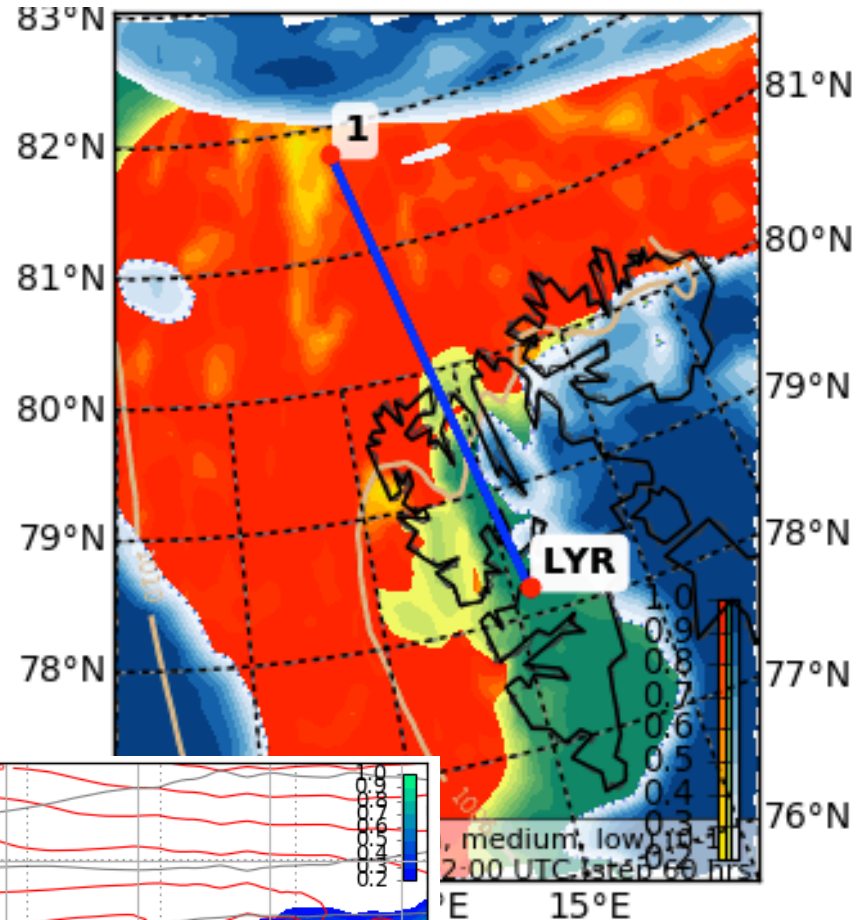
AROME-Arctic

Relative humidity

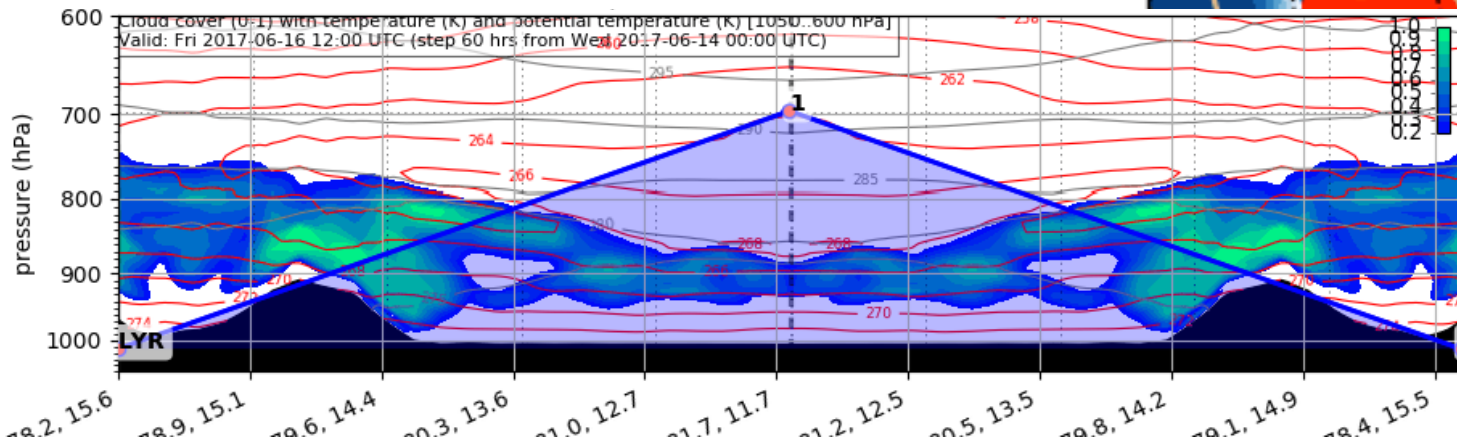
Cloud cover

Jun 16
12 UTC

Low
Medium
High



Cloud cover / T (K) / θ (K)



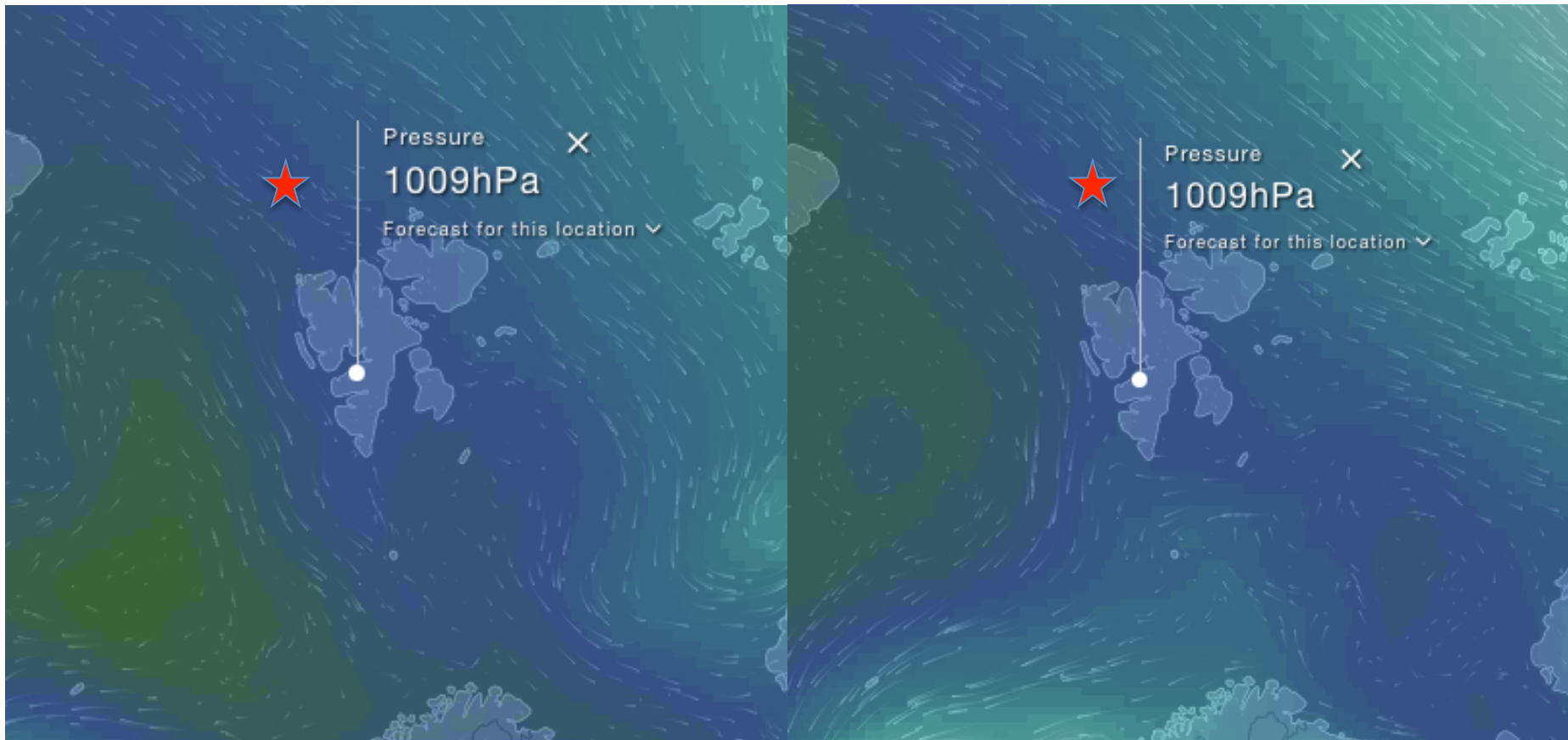
ECMWF

MSLP / v_{surf}

Jun 17
12 UTC

★ Polarstern

Jun 18
12 UTC



ECMWF