

# Weather briefing

ACLOUD Longyearbyen, Svalbard

Sun 11 June 2017 – **Mon 12 June** –Thu 15 June 2017

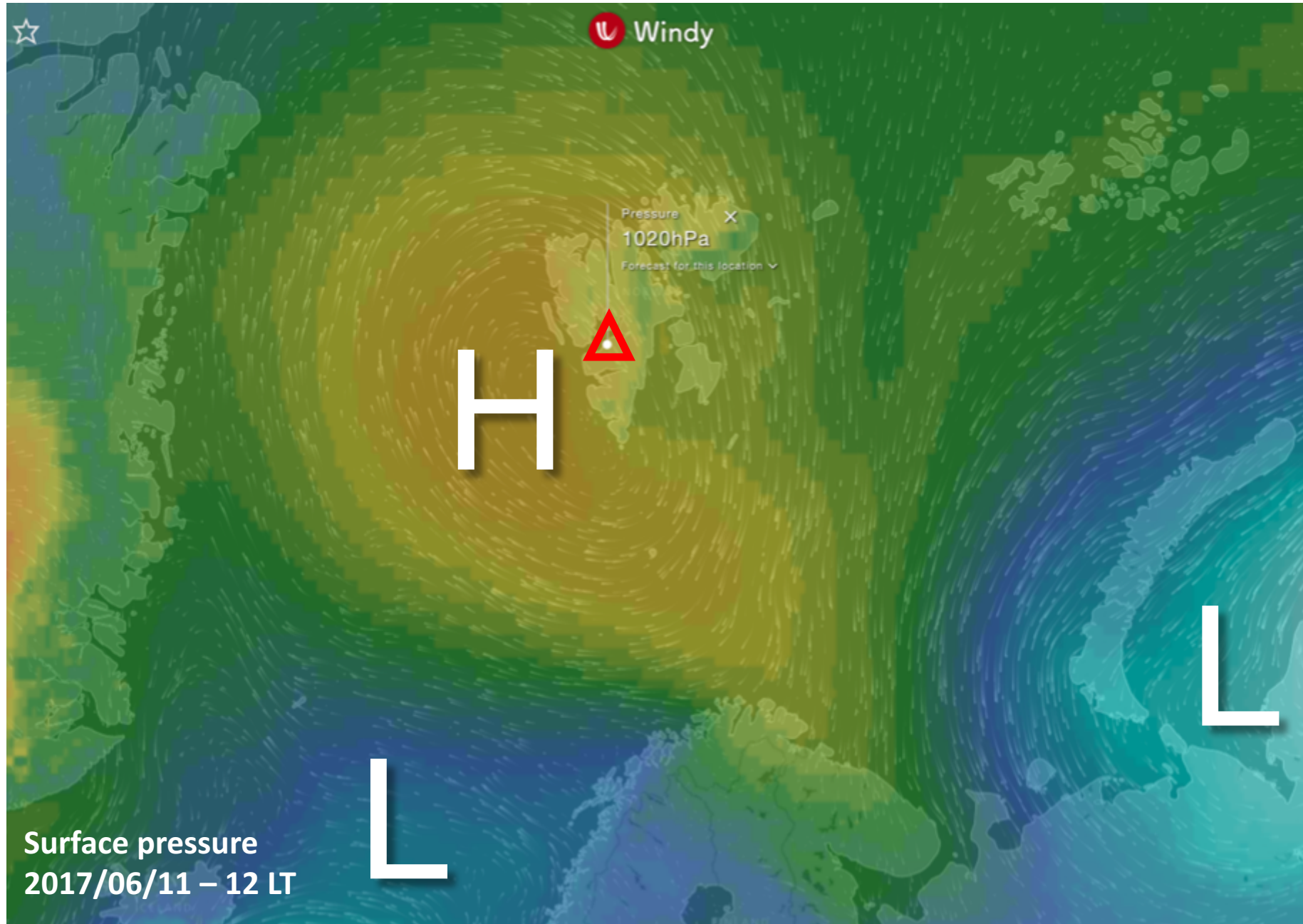
## Summary

Spitsbergen is still mainly influenced by a high pressure system that has now shifted to the southwest of the island bringing us wind from the west. The wind speed slowly picks up compared to the last days. There is a layer of low clouds to be found around the island, with no clouds above.

Tomorrow the low becomes weaker with the wind direction changing towards north. Medium high and high clouds appear from the west.

- Position of Polarstern (semi stationary) 81.94° N, 10.92° E

# Analysis 11 June 2017 @ 12 UTC

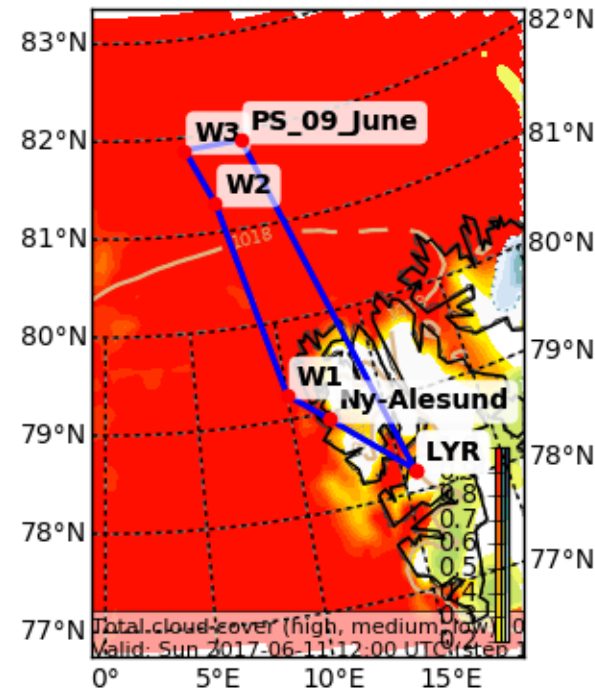


# Clouds

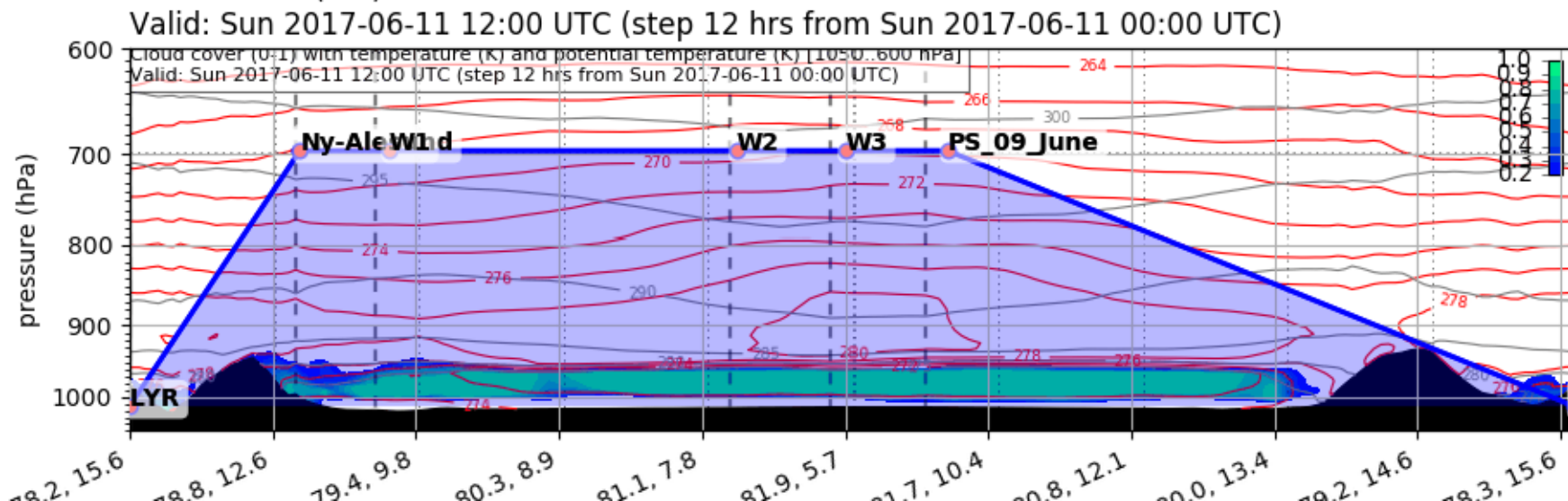
## Today 12 UTC

Cloud Cover (0-1) (Total Cloud Cover)

Valid: Sun 2017-06-11 12:00 UTC (step 12 hrs from Sun 2017-06-11 00:00 UTC)



EPSG:77790000

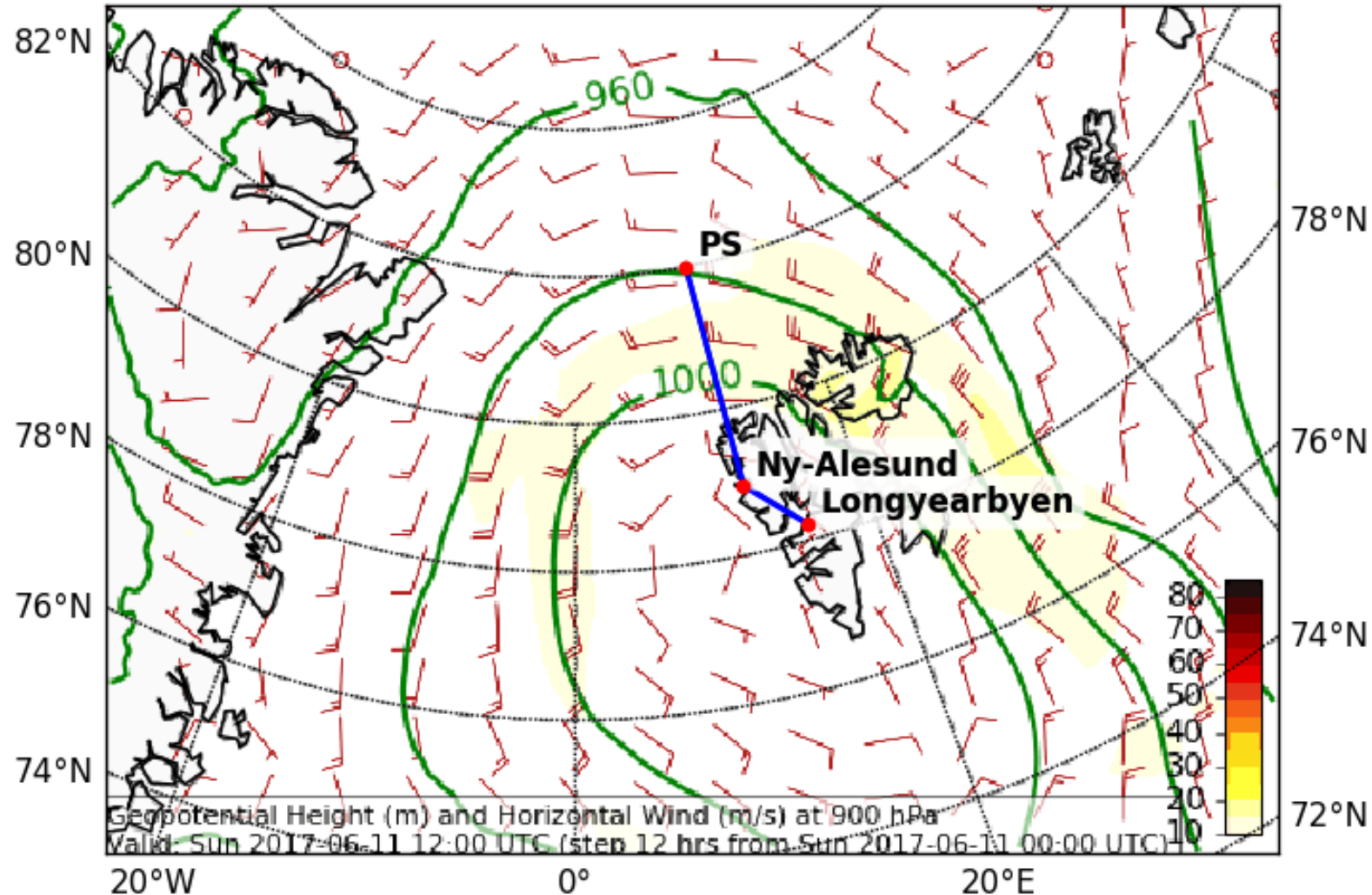




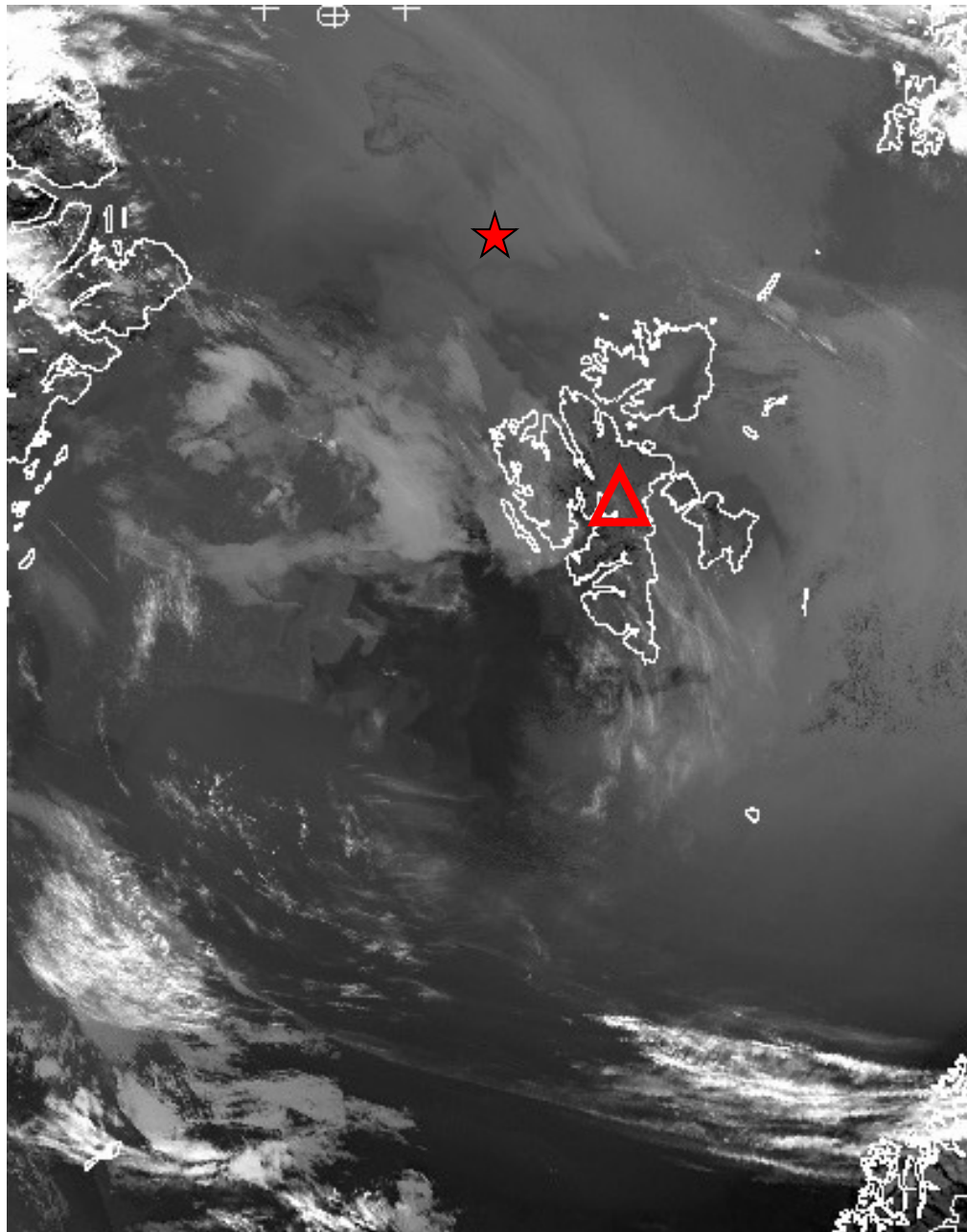
# Wind

## Today 12 UTC

Geopotential Height (m) and Horizontal Wind (m/s) (Wind Speed 10-85 m/s) at 900 (hPa)  
Valid: So 2017-06-11 12:00 UTC (step 12 hrs from So 2017-06-11 00:00 UTC)



# NOAA-19 11 June 2017 @ 06:18 UTC

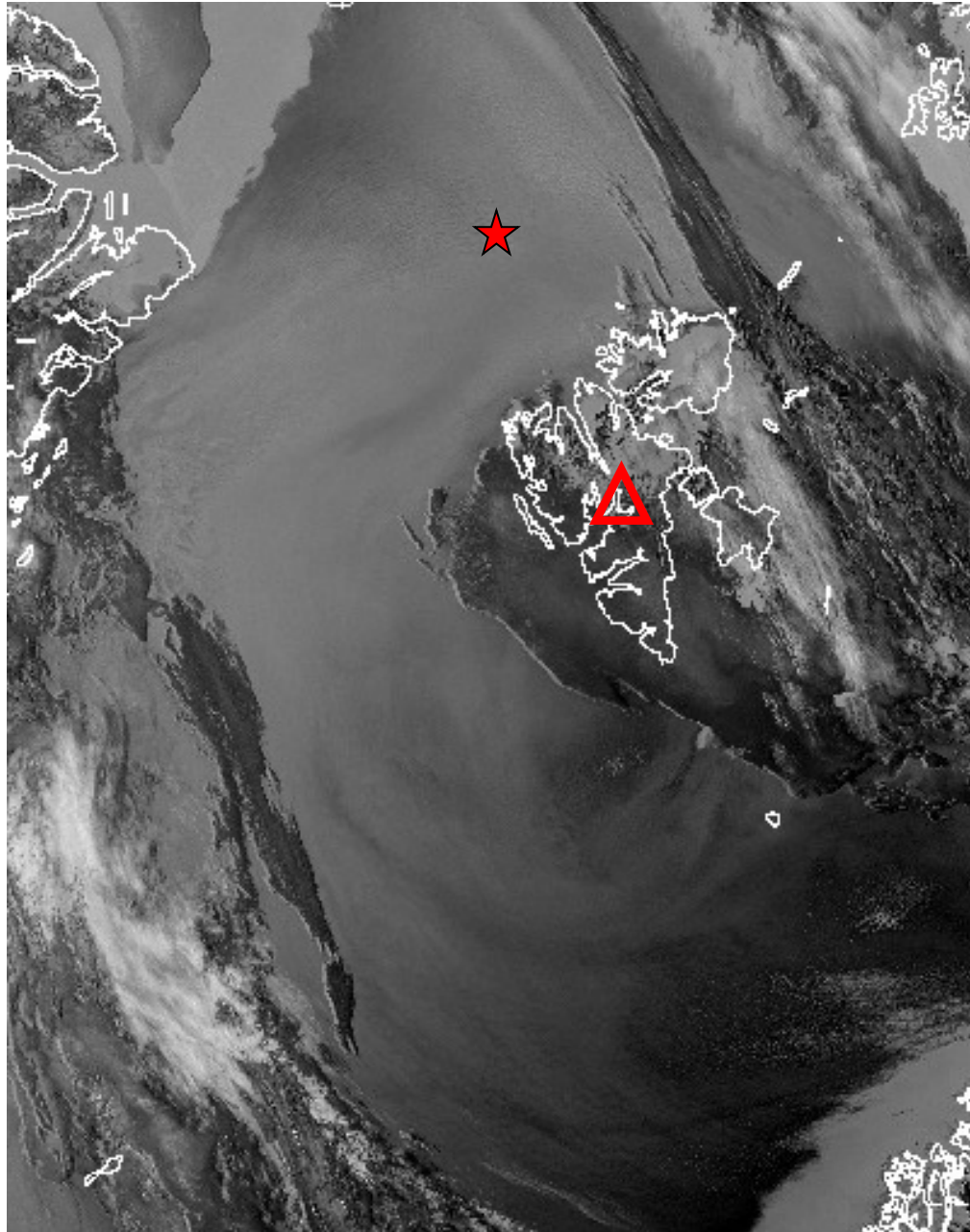


★ RV Polarstern (81.94° N, 10.92° E)

06:18

3.74  $\mu\text{m}$

**NOAA-19 11 June 2017 @ 09:42 UTC**



★ RV Polarstern (81.94° N, 10.92° E)

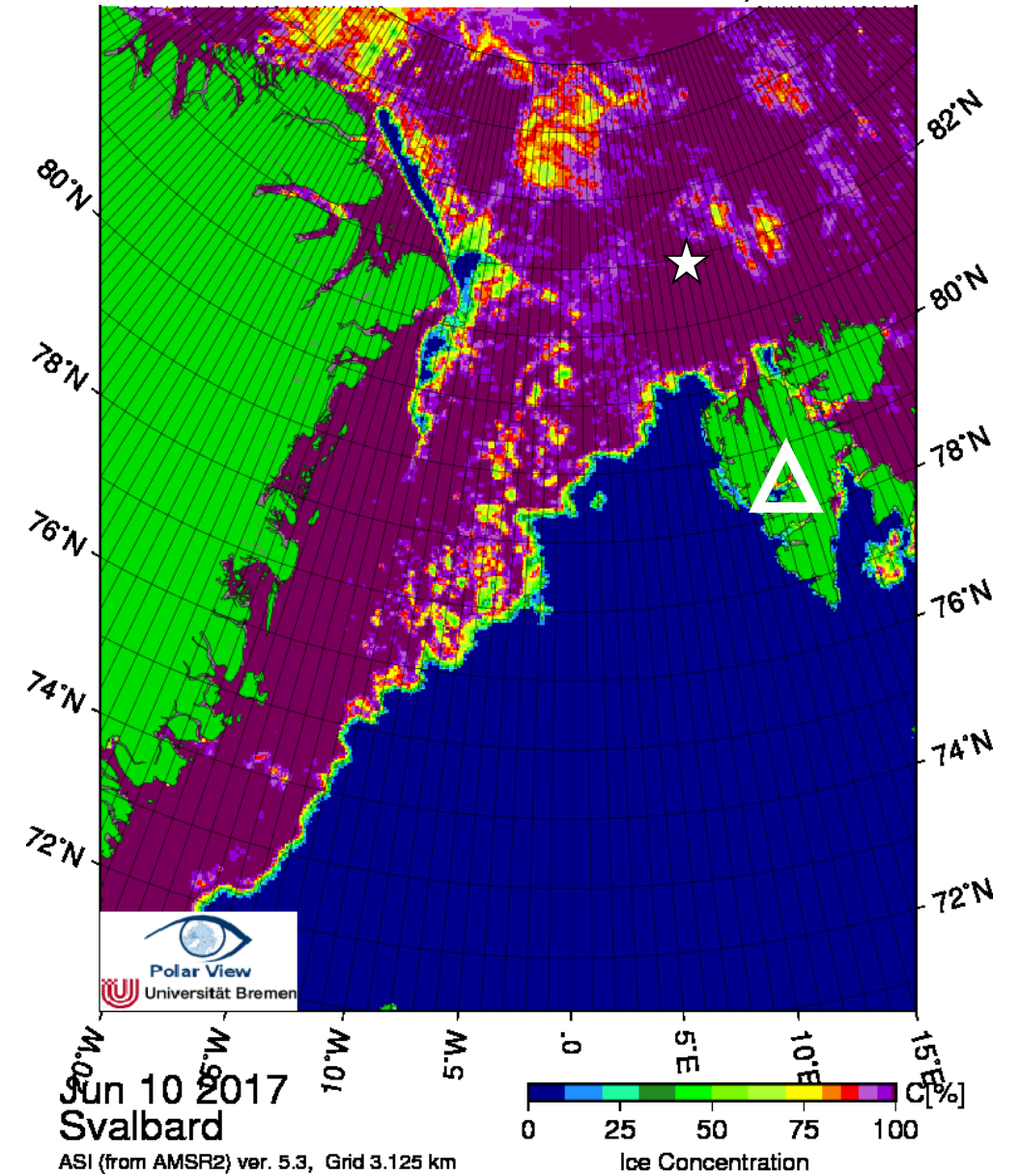
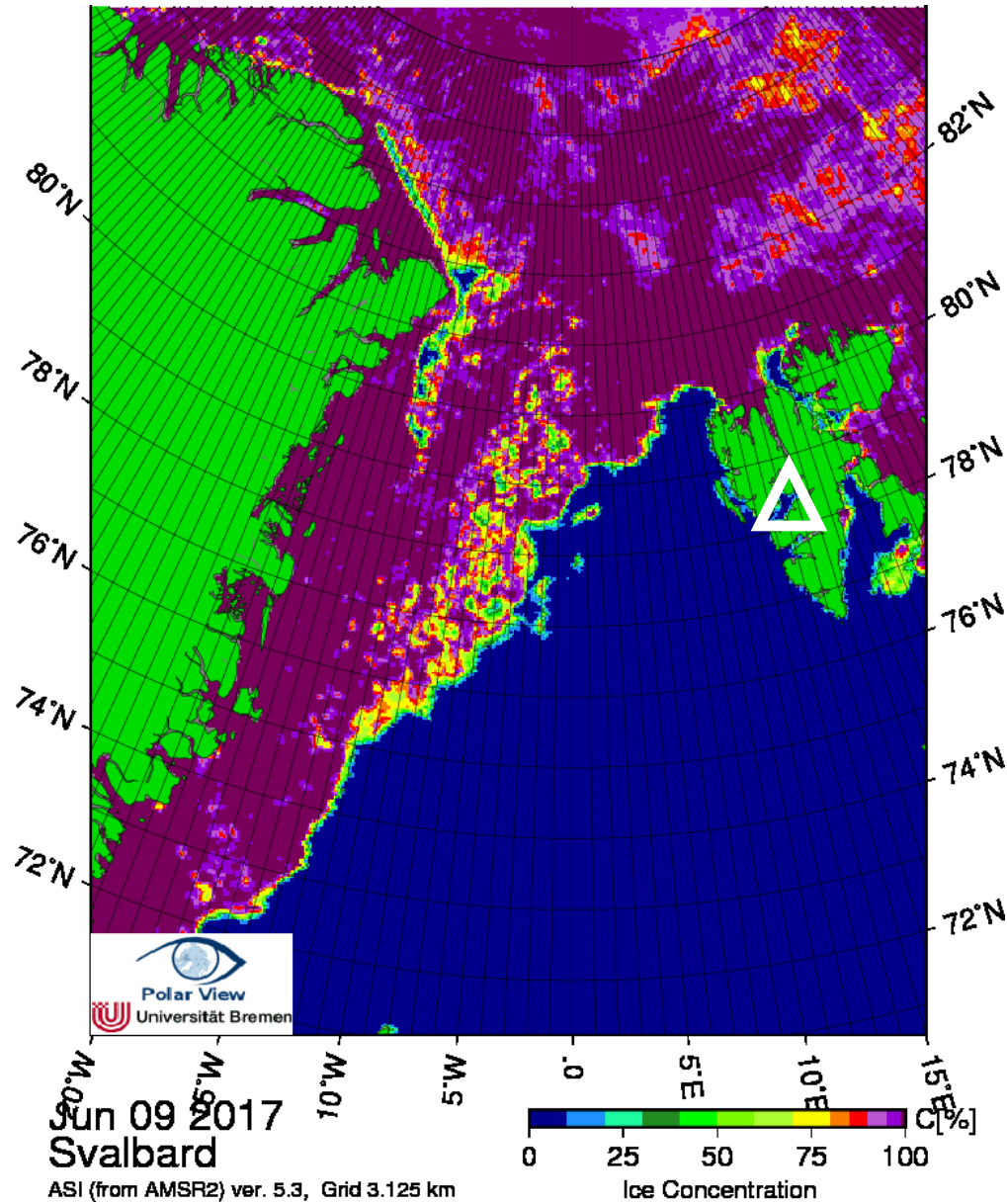
**09:42**

**3.74  $\mu\text{m}$**



# Arctic sea ice 9 June & 10 June 2017

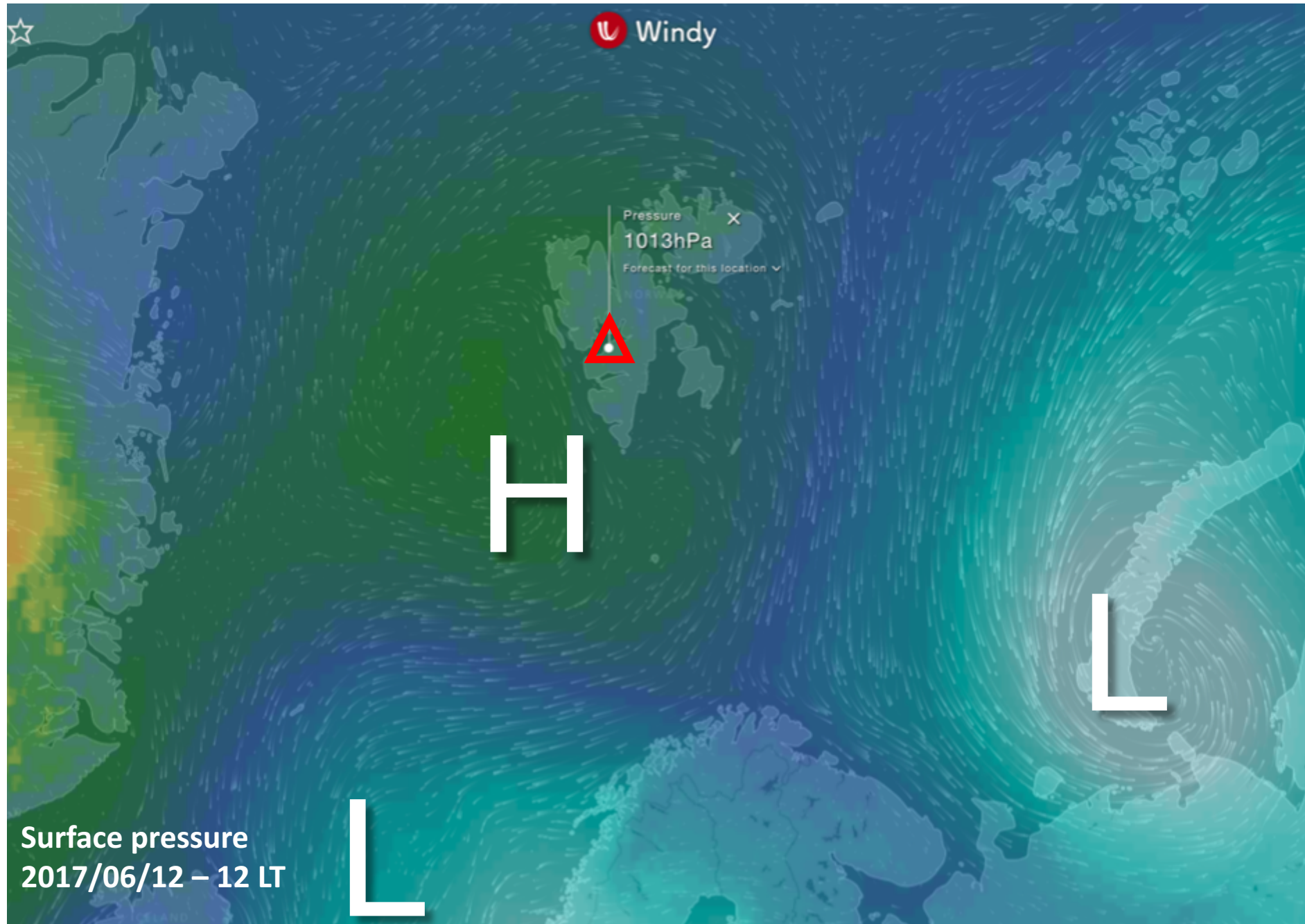
☆ RV Polarstern 5 June 81.94° N, 10.92° E



# Tomorrow

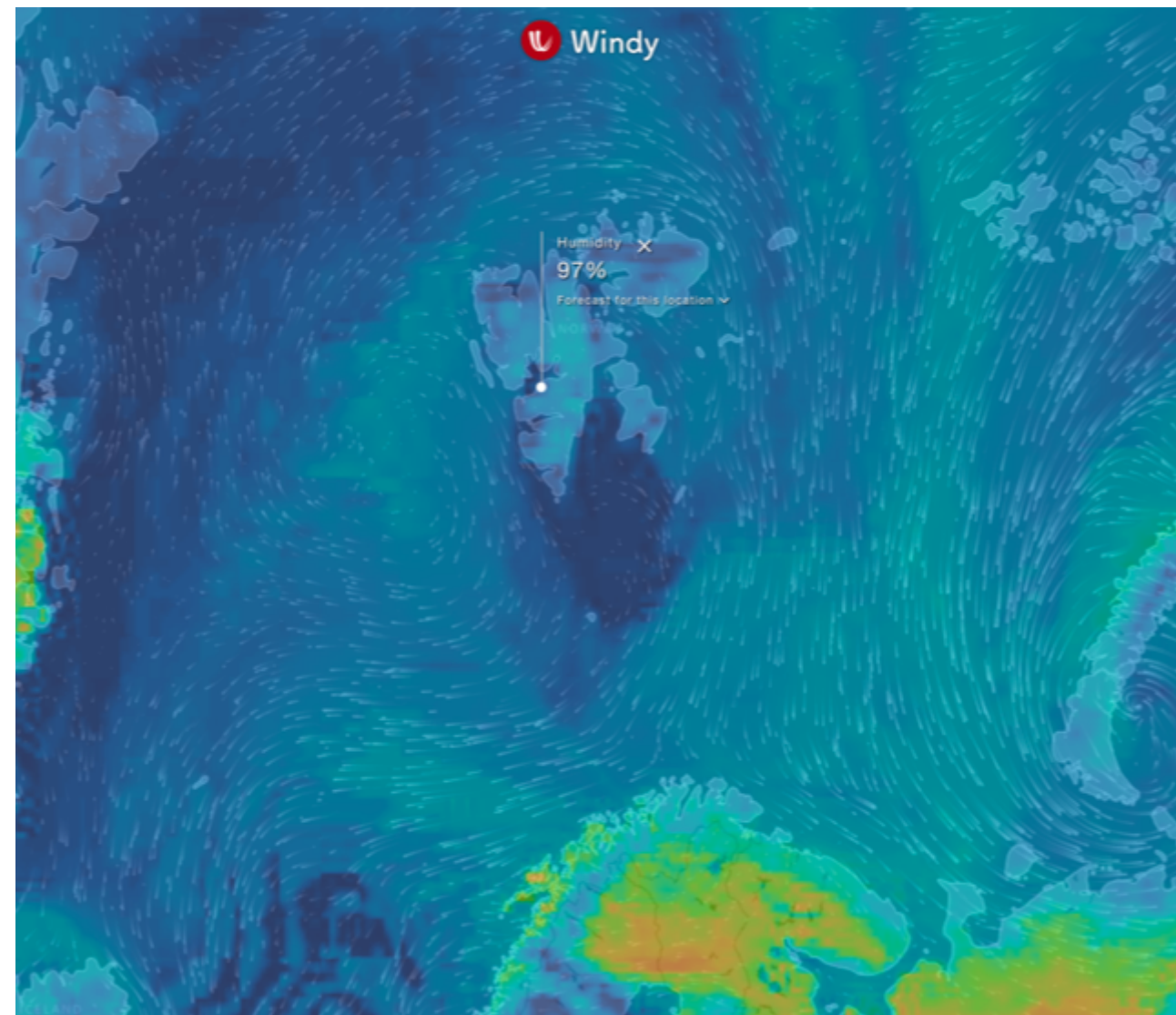
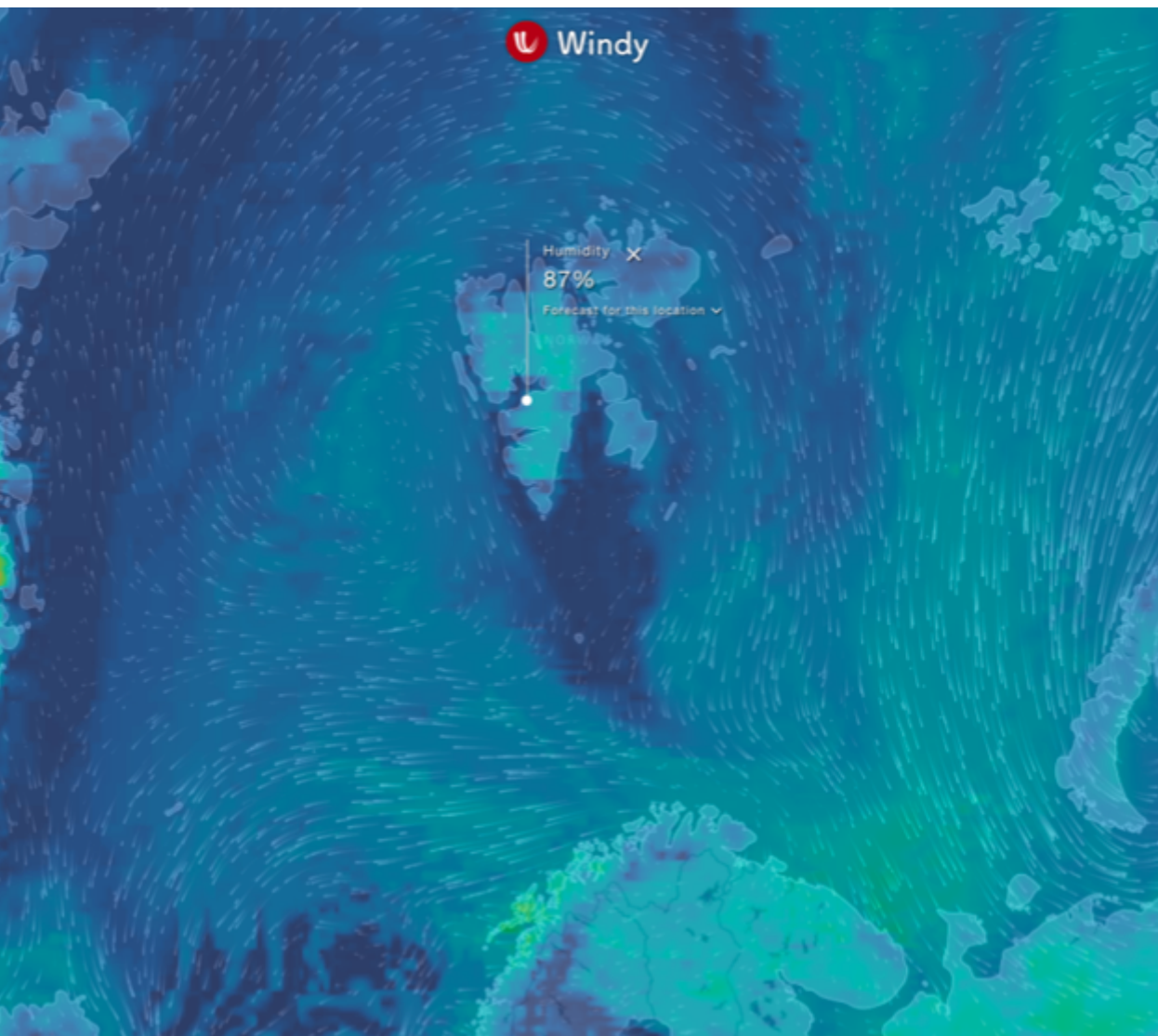
**Mon 12 June 2017**

# General Situation Mon 12 June 2017





# Rel Humid 12 June 2017 @ 06:00/12:00

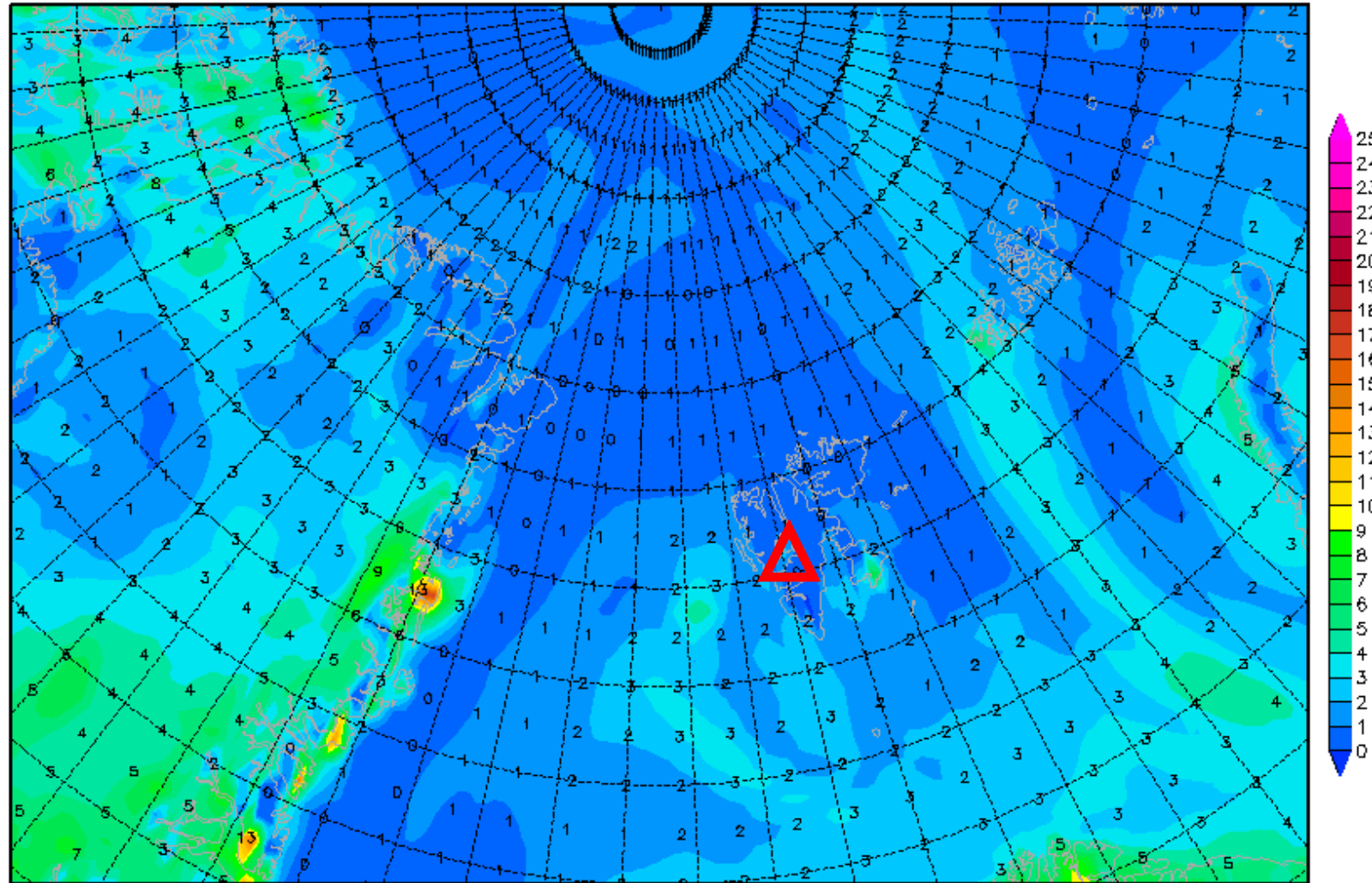


# 2-m dew point diff. 12 June 2017 @ 12 UTC

Init : Sun,11JUN2017 00Z

Valid: Mon,12JUN2017 12Z

*2m (Temperatur-Taupunkt)*



Daten: GFS  
(C) Wetterzentrale  
[www.wetterzentrale.de](http://www.wetterzentrale.de)

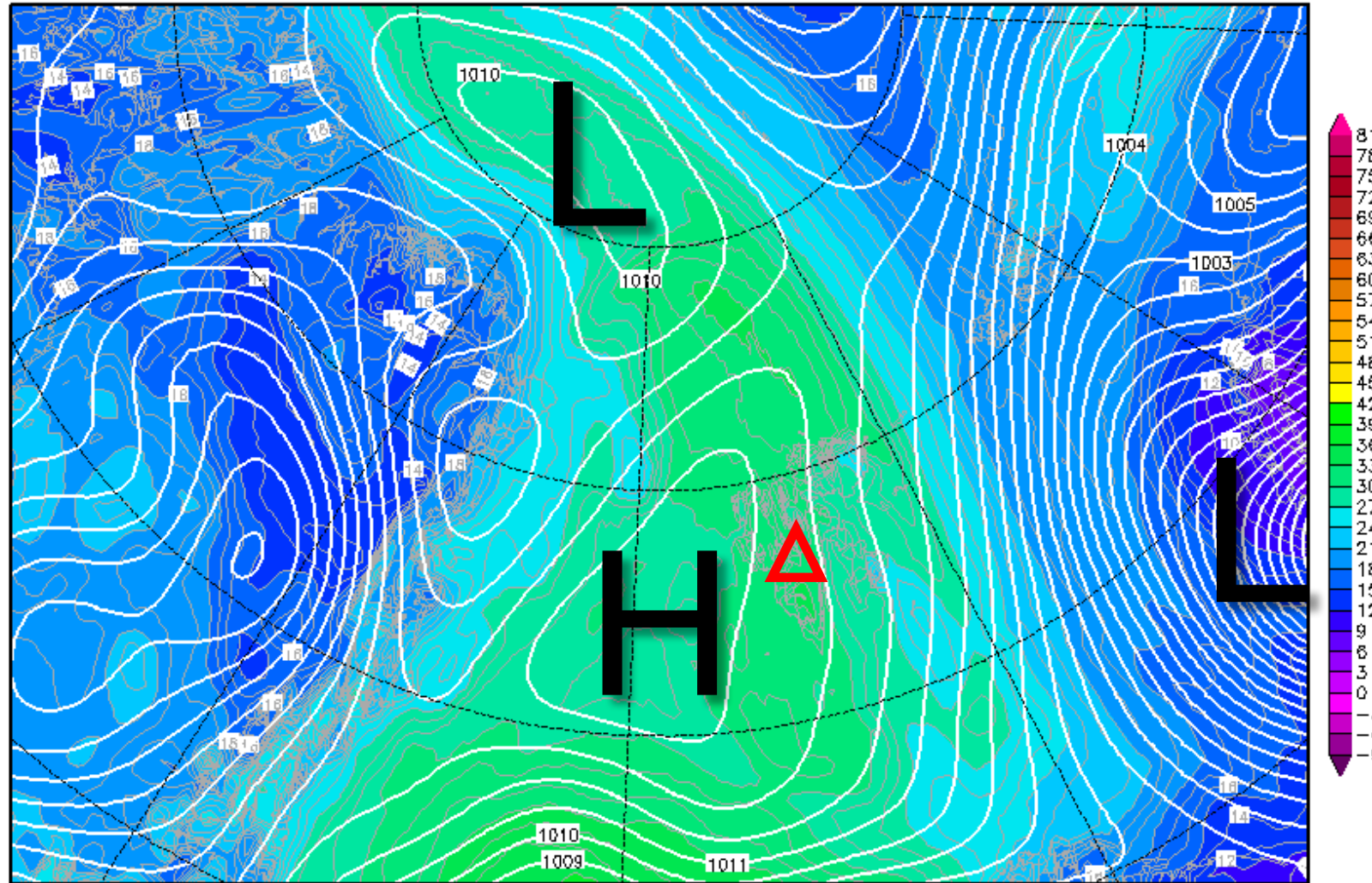


# 850-hPa Theta Equiv. 12 June 2017 @ 12 UTC

Init : Sun,11JUN2017 00Z

Valid: Mon,12JUN2017 12Z

*Bodendruck (hPa) und 850 hPa Aeq.Pot.T. (Grad C)*



Daten: GFS-Modell des amerikanischen Wetterdienstes

(C) Wetterzentrale

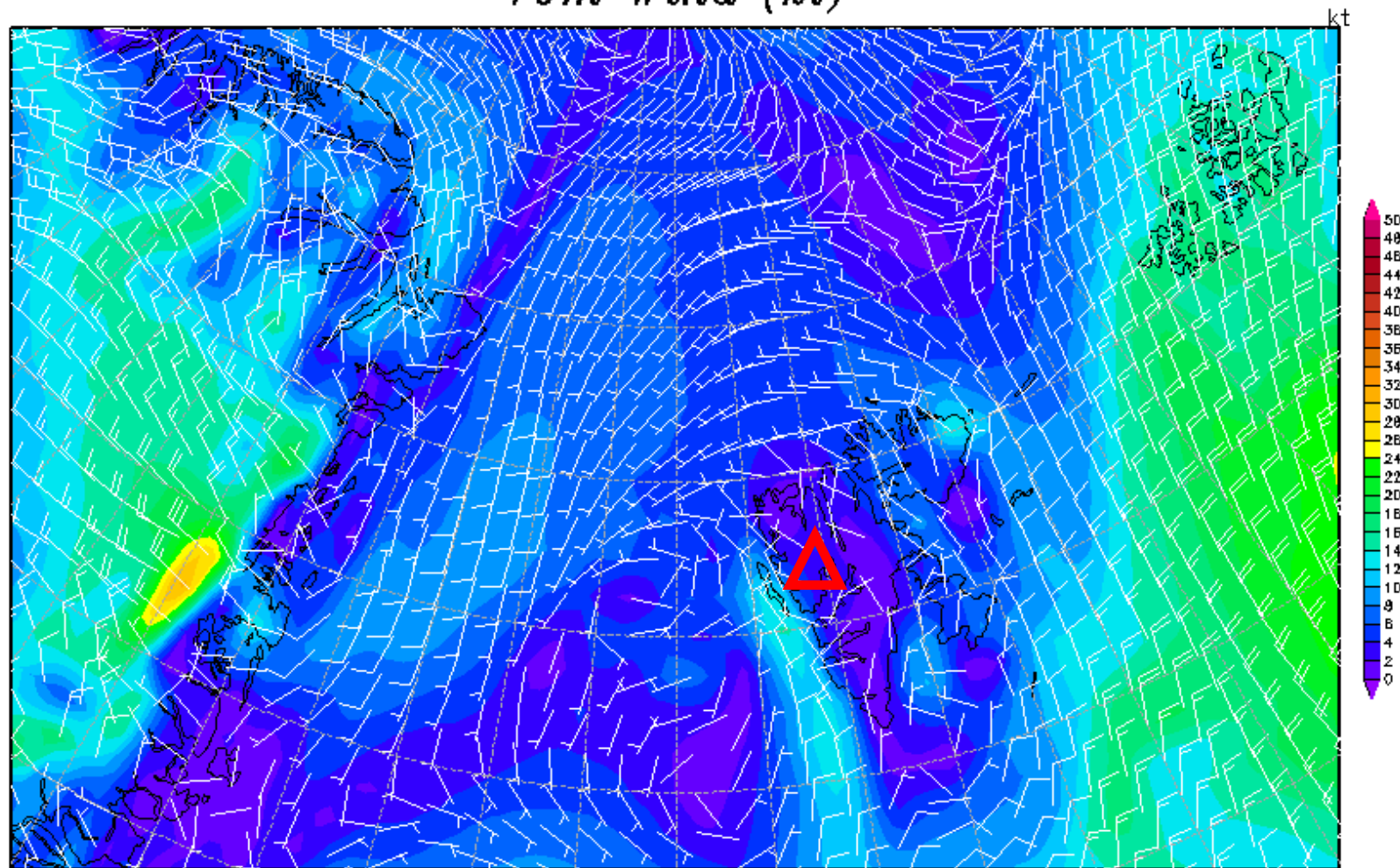
[www.wetterzentrale.de](http://www.wetterzentrale.de)

# 10m wind 12 June 2017 @ 12 UTC

Init : Sun,11JUN2017 00Z

Valid: Mon,12JUN2017 12Z

10m Wind (kt)

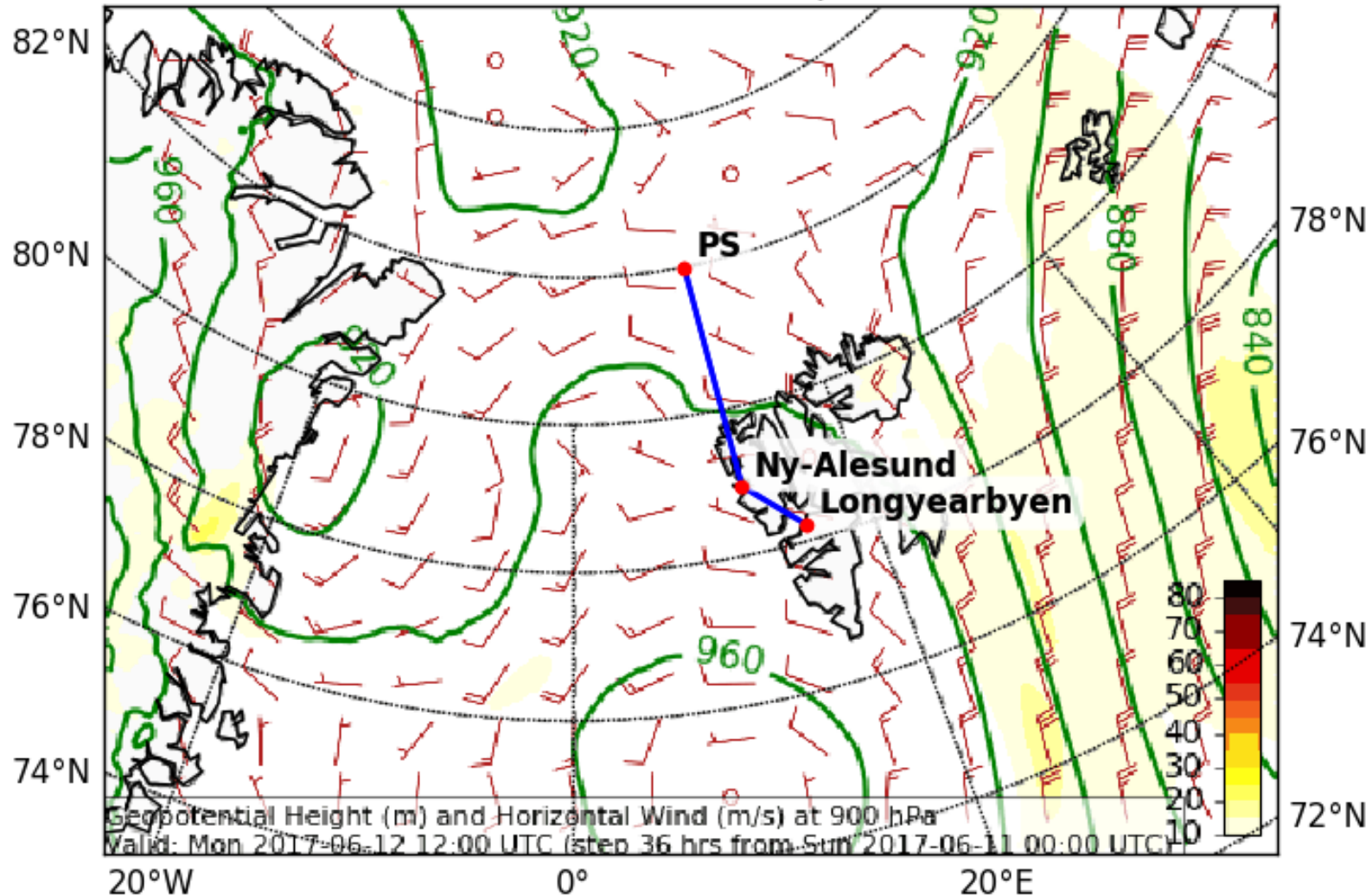


Daten: GFS-Modell des amerikanischen Wetterdienstes  
(C) Wetterzentrale  
[www.wetterzentrale.de](http://www.wetterzentrale.de)

# Wind

## Tomorrow 12 UTC

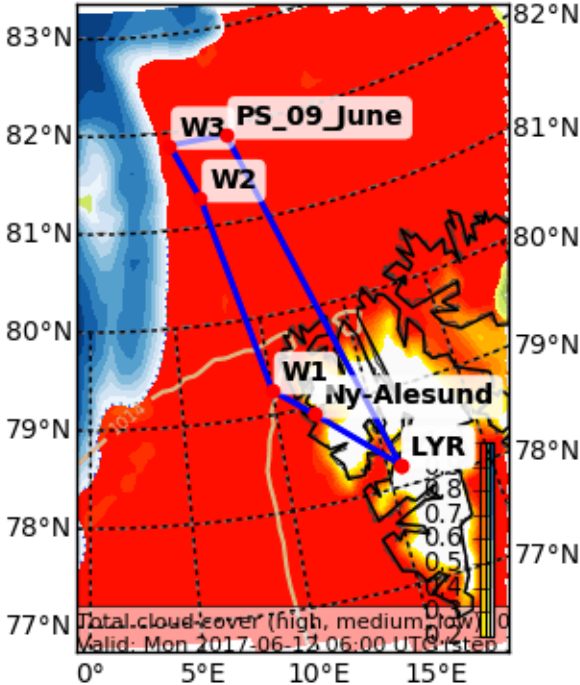
Geopotential Height (m) and Horizontal Wind (m/s) (Wind Speed 10-85 m/s) at 900 (hPa)  
Valid: Mo 2017-06-12 12:00 UTC (step 36 hrs from So 2017-06-11 00:00 UTC)



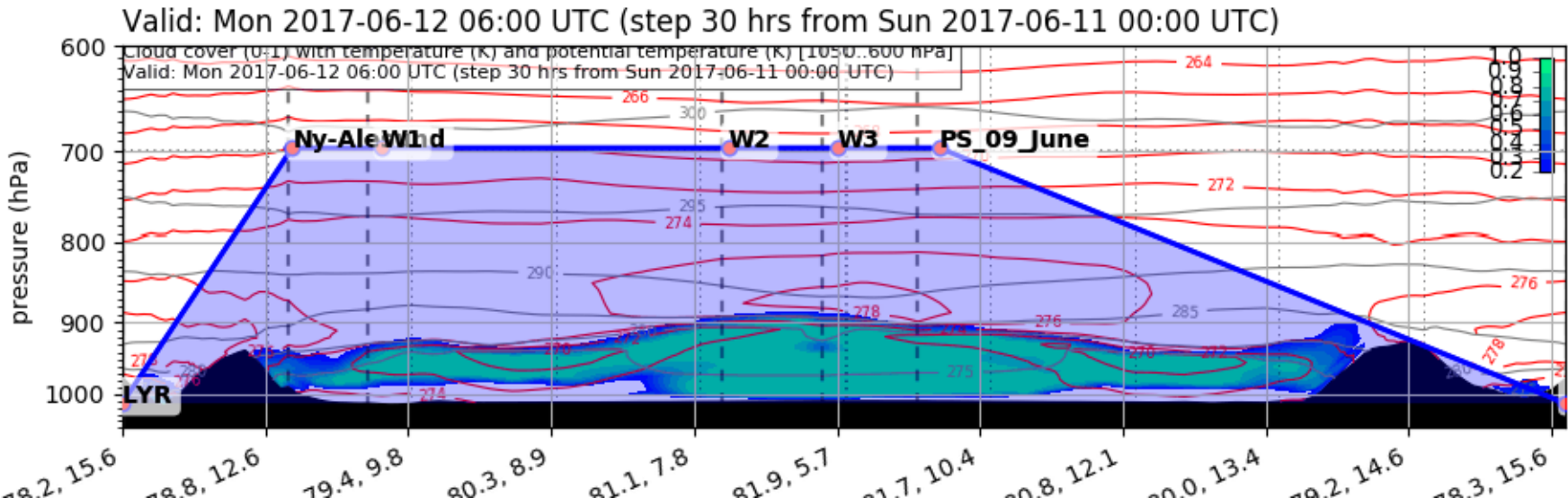


# Forecast Monday 06 UTC

Cloud Cover (0-1) (Total Cloud Cover)  
Valid: Mon 2017-06-12 06:00 UTC (step 30 hrs from Sun 2017-06-11 00:00 UTC)



EPSG:77790000



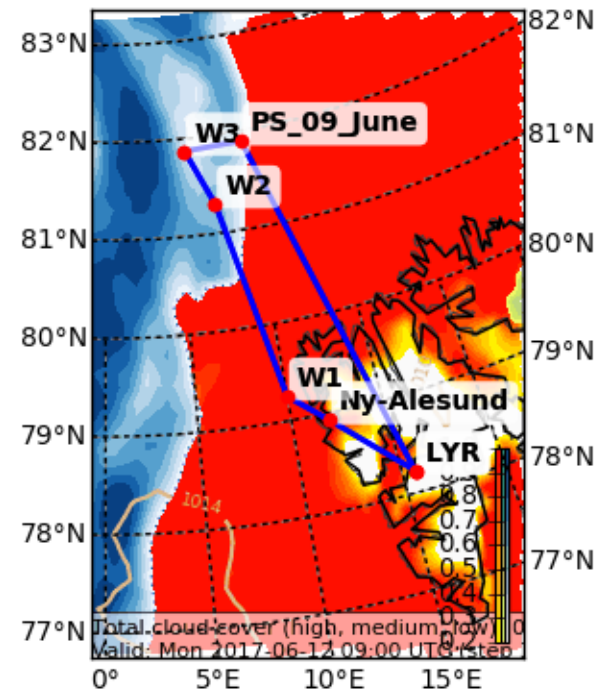


# Forecast

## Monday 09 UTC

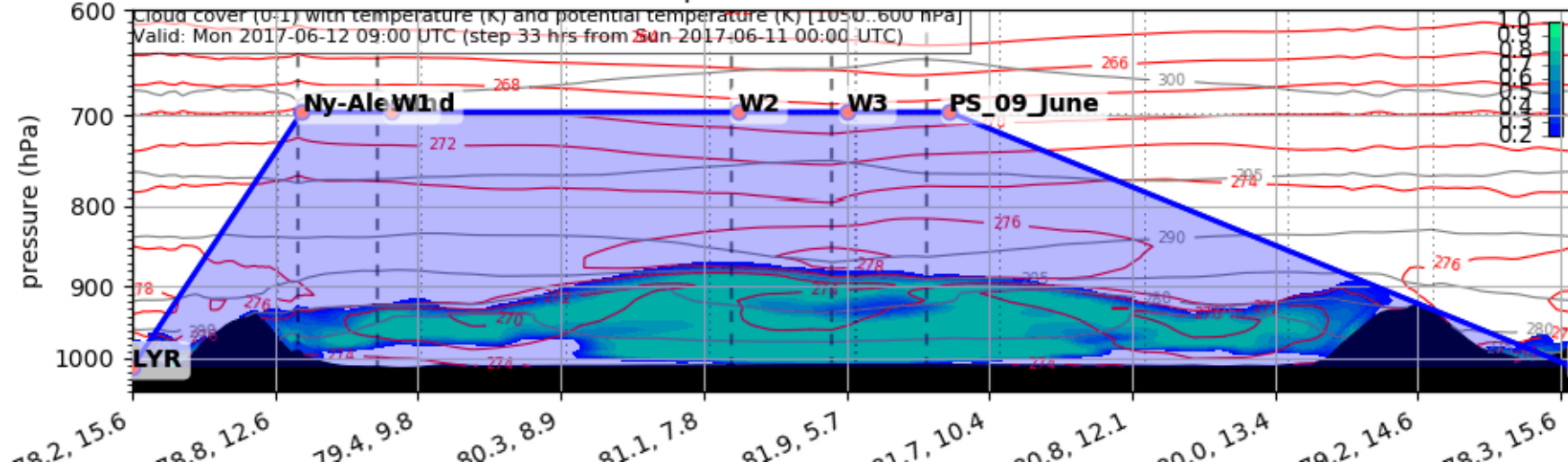
Cloud Cover (0-1) (Total Cloud Cover)

Valid: Mon 2017-06-12 09:00 UTC (step 33 hrs from Sun 2017-06-11 00:00 UTC)



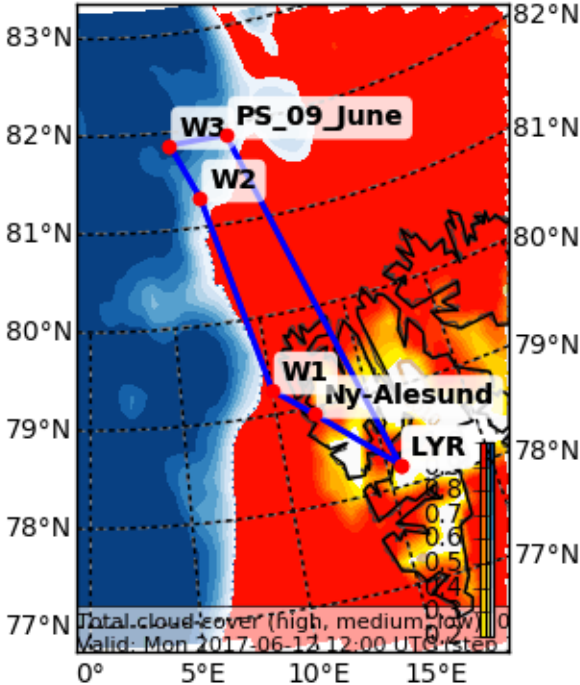
EPSG:77790000

Valid: Mon 2017-06-12 09:00 UTC (step 33 hrs from Sun 2017-06-11 00:00 UTC)

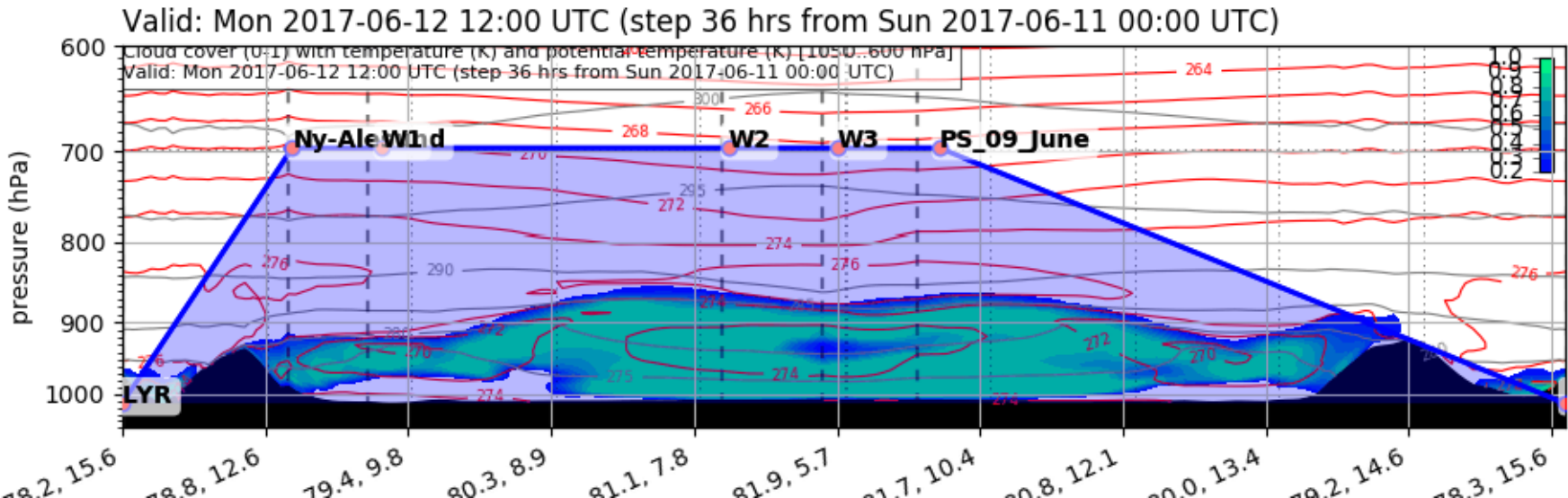


# Forecast Monday 12 UTC

Cloud Cover (0-1) (Total Cloud Cover)  
Valid: Mon 2017-06-12 12:00 UTC (step 36 hrs from Sun 2017-06-11 00:00 UTC)



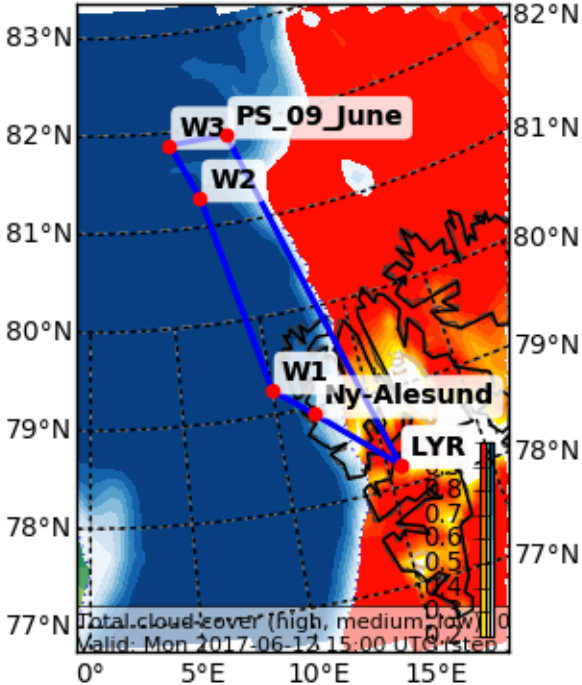
EPSG:77790000



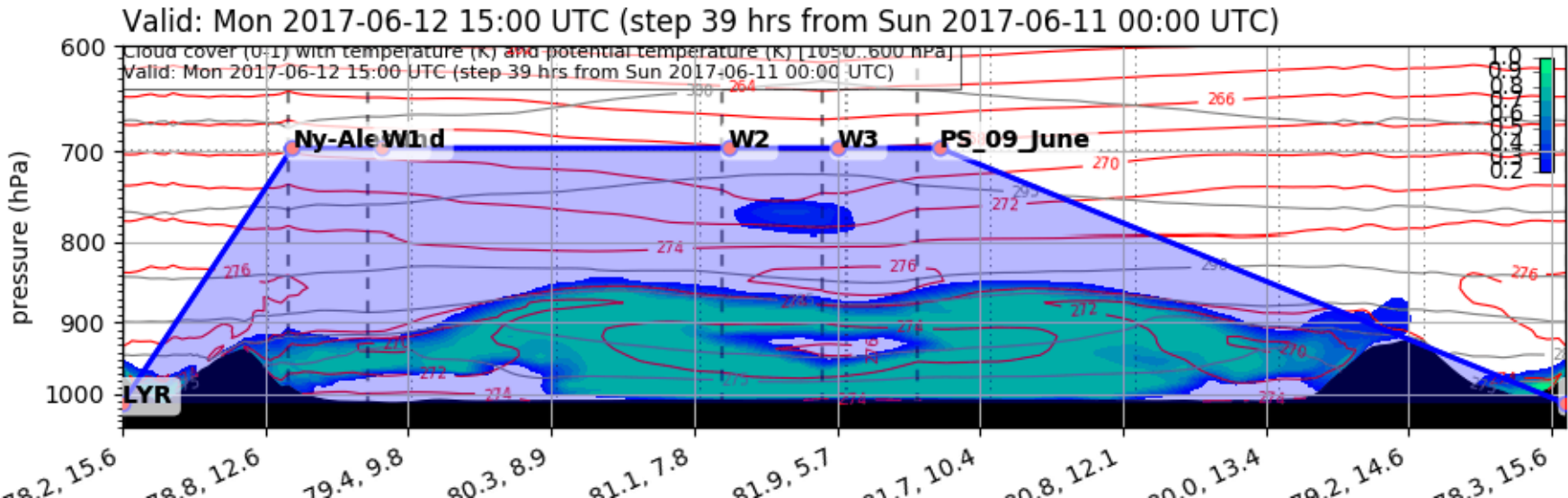
# Forecast

## Monday 15 UTC

Cloud Cover (0-1) (Total Cloud Cover)  
Valid: Mon 2017-06-12 15:00 UTC (step 39 hrs from Sun 2017-06-11 00:00 UTC)



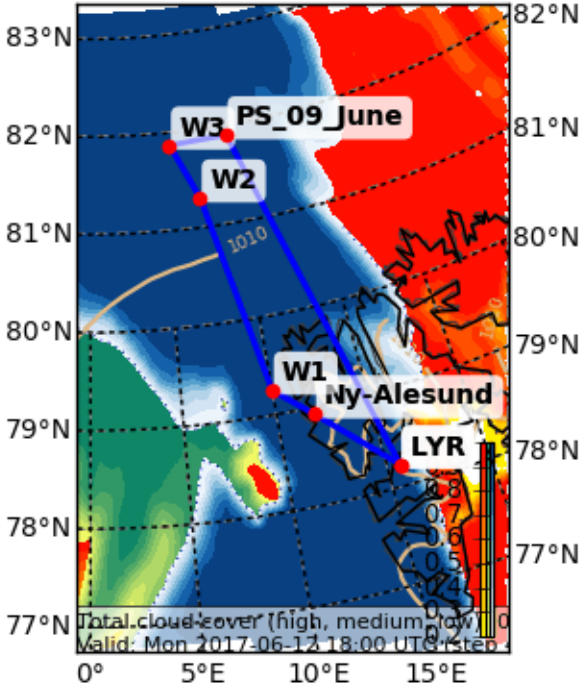
EPSG:77790000



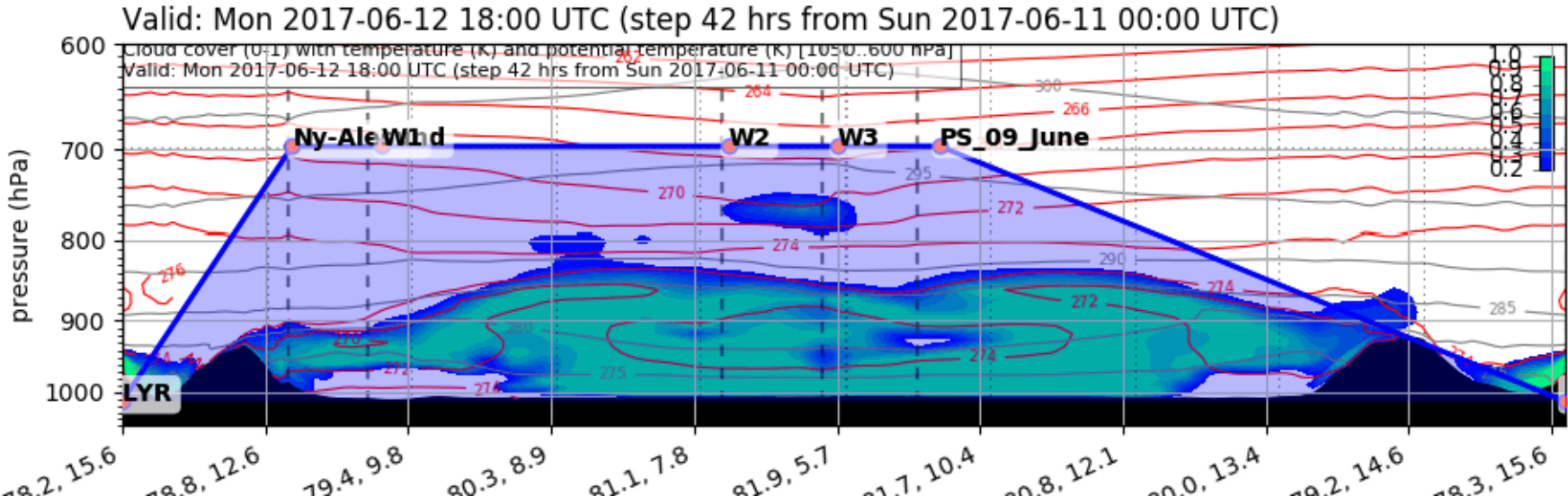
# Forecast

## Monday 18 UTC

Cloud Cover (0-1) (Total Cloud Cover)  
Valid: Mon 2017-06-12 18:00 UTC (step 42 hrs from Sun 2017-06-11 00:00 UTC)



EPSG:77790000





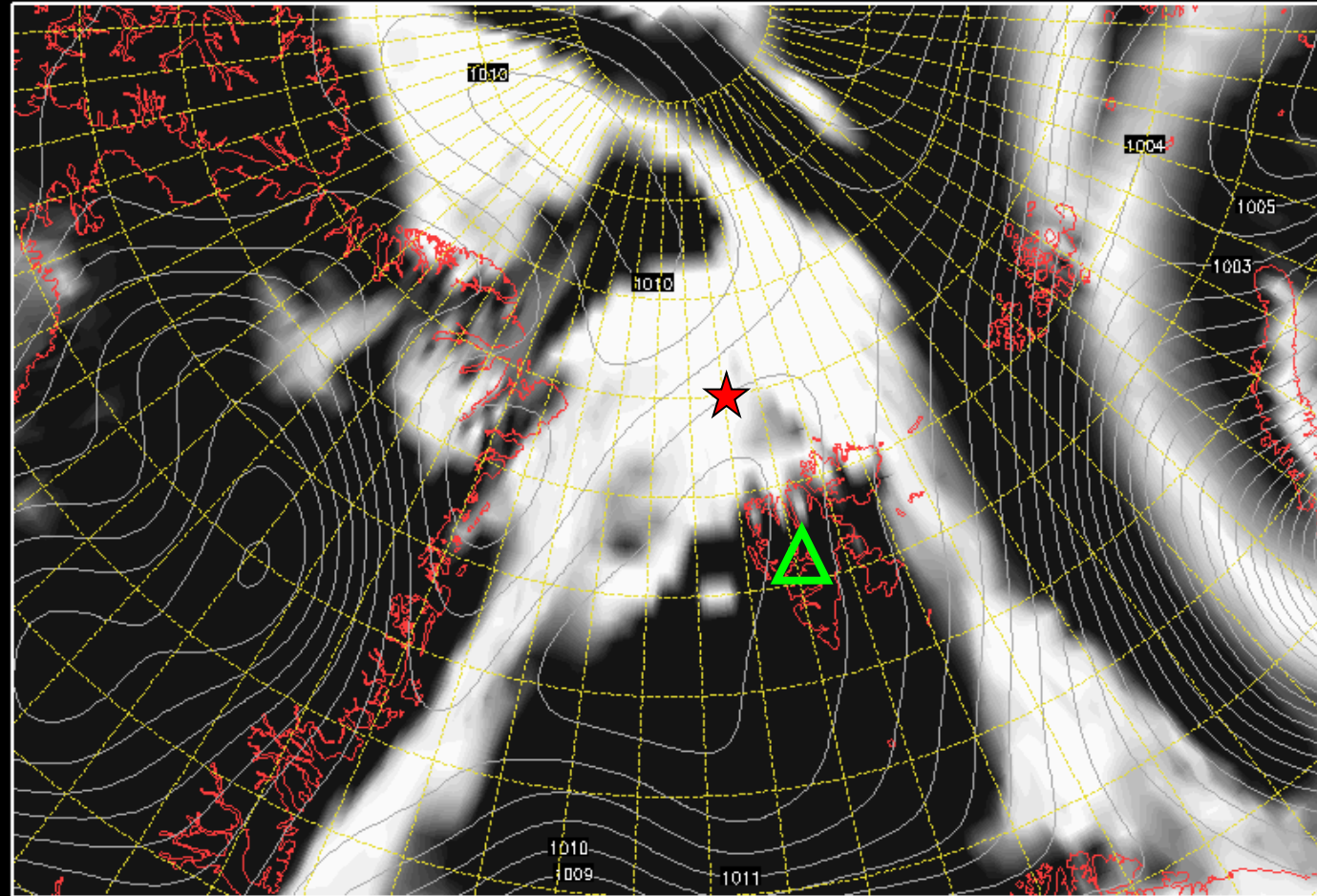
# Low-level cloud cover 12 June 2017 @ 12 UTC

★ RV Polarstern (81.94° N, 10.92° E)

Init : Sun,11JUN2017 00Z

Valid: Mon,12JUN2017 12Z

Bodendruck, Tiefe Wolken und Grenzschicht-Wolken in %



Daten: GFS-Modell des amerikanischen Wetterdienstes

(C) W. J.

www.wetterzentrale.de 28 32 36 40 44 48 52 56 60 64 68 72 76 80 84 88 92 96 100

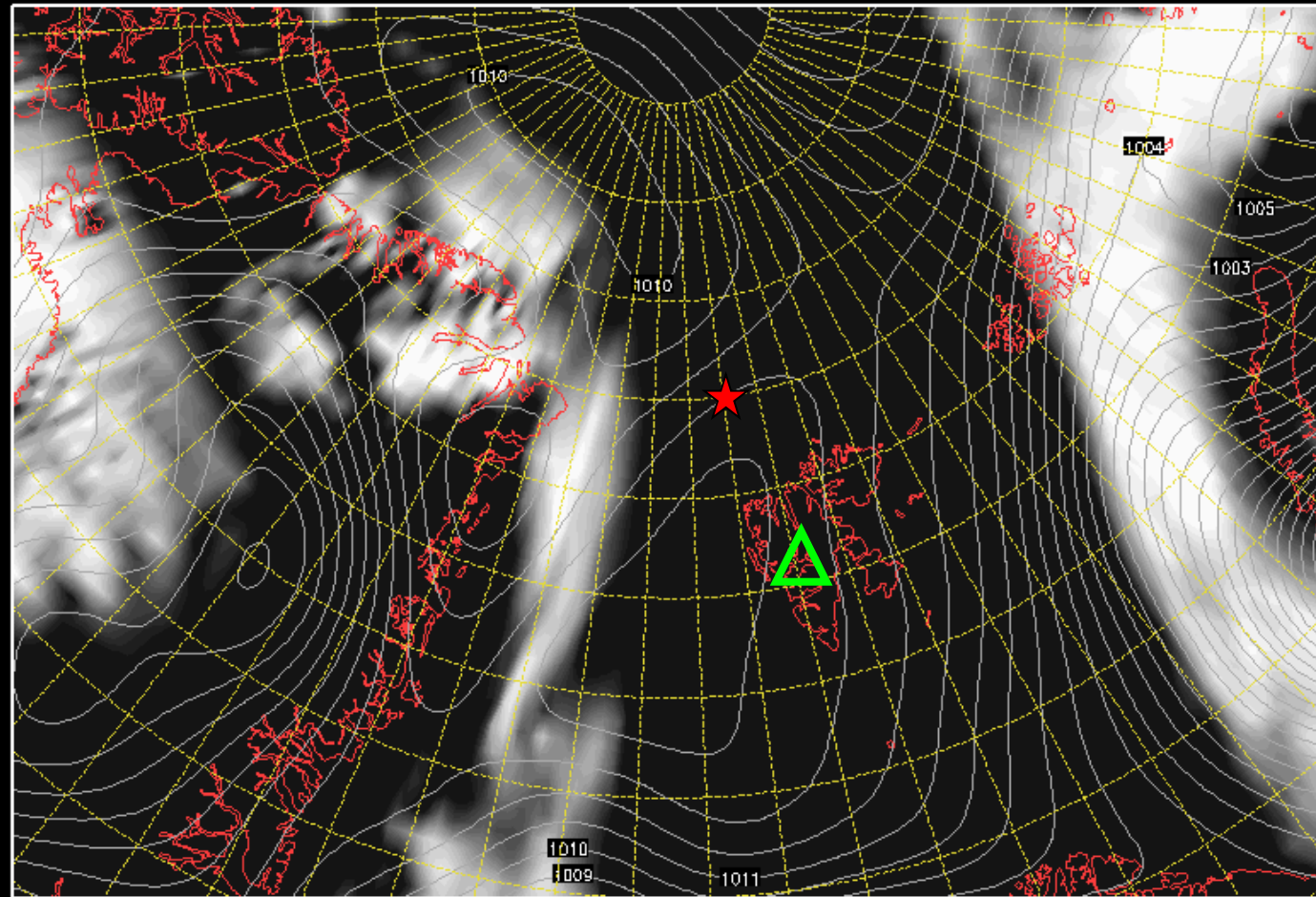
# Mid-level cloud cover 12 June 2017 @ 12 UTC

★ RV Polarstern (81.94° N, 10.92° E)

Init : Sun,11JUN2017 00Z

Valid: Mon,12JUN2017 12Z

Bodendruck, Mittelhohe Wolken in %



Daten: GFS-Modell des amerikanischen Wetterdienstes

(C) W. J.

www.wetter.de 28 32 36 40 44 48 52 56 60 64 68 72 76 80 84 88 92 96 100



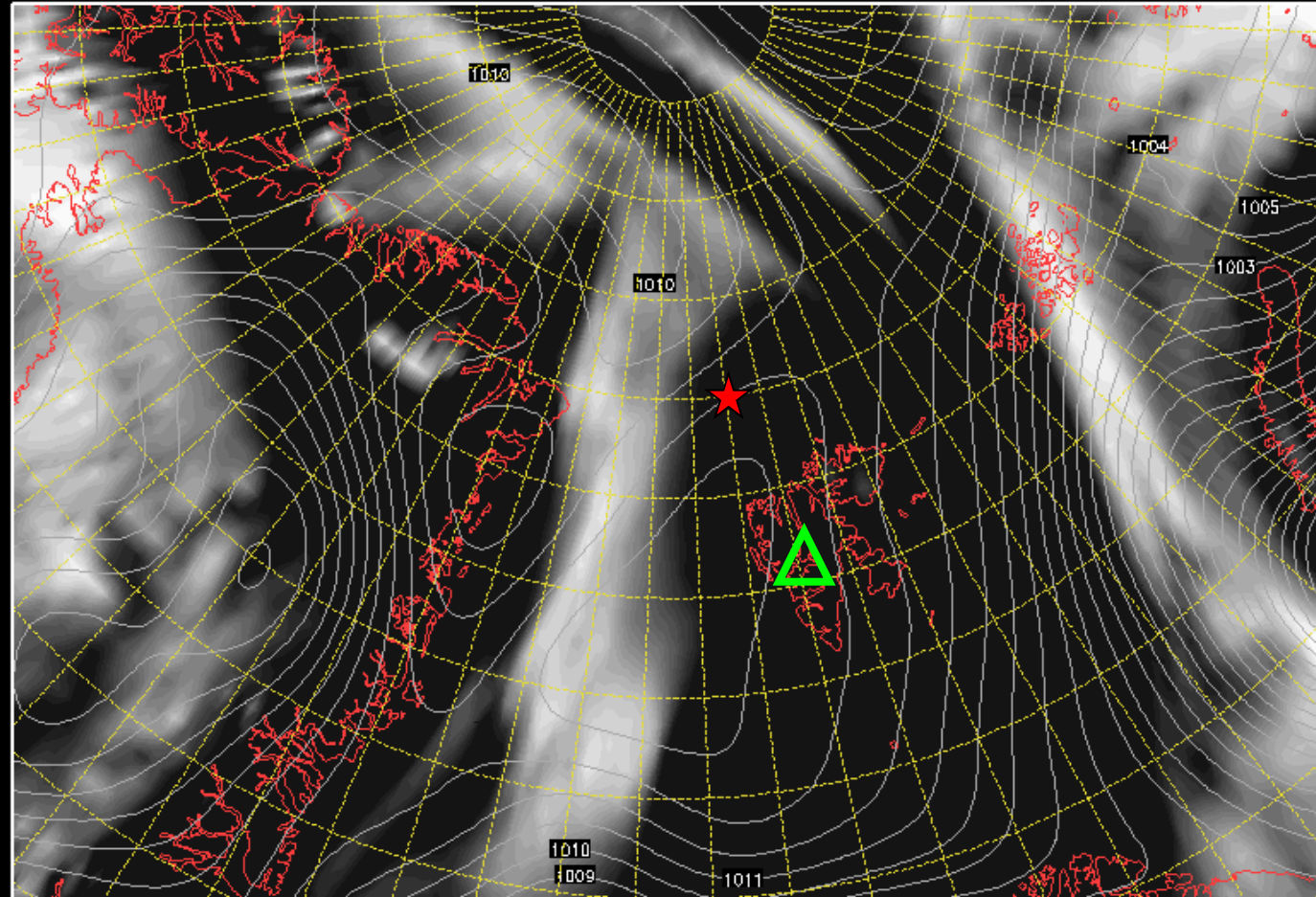
# High-level cloud cover 12 June 2017 @ 12 UTC

★ RV Polarstern (81.94° N, 10.92° E)

Init : Sun,11JUN2017 00Z

Valid: Mon,12JUN2017 12Z

Bodendruck, Hohe Wolken in %



Daten: GFS-Modell des amerikanischen Wetterdienstes

(C) W. J.

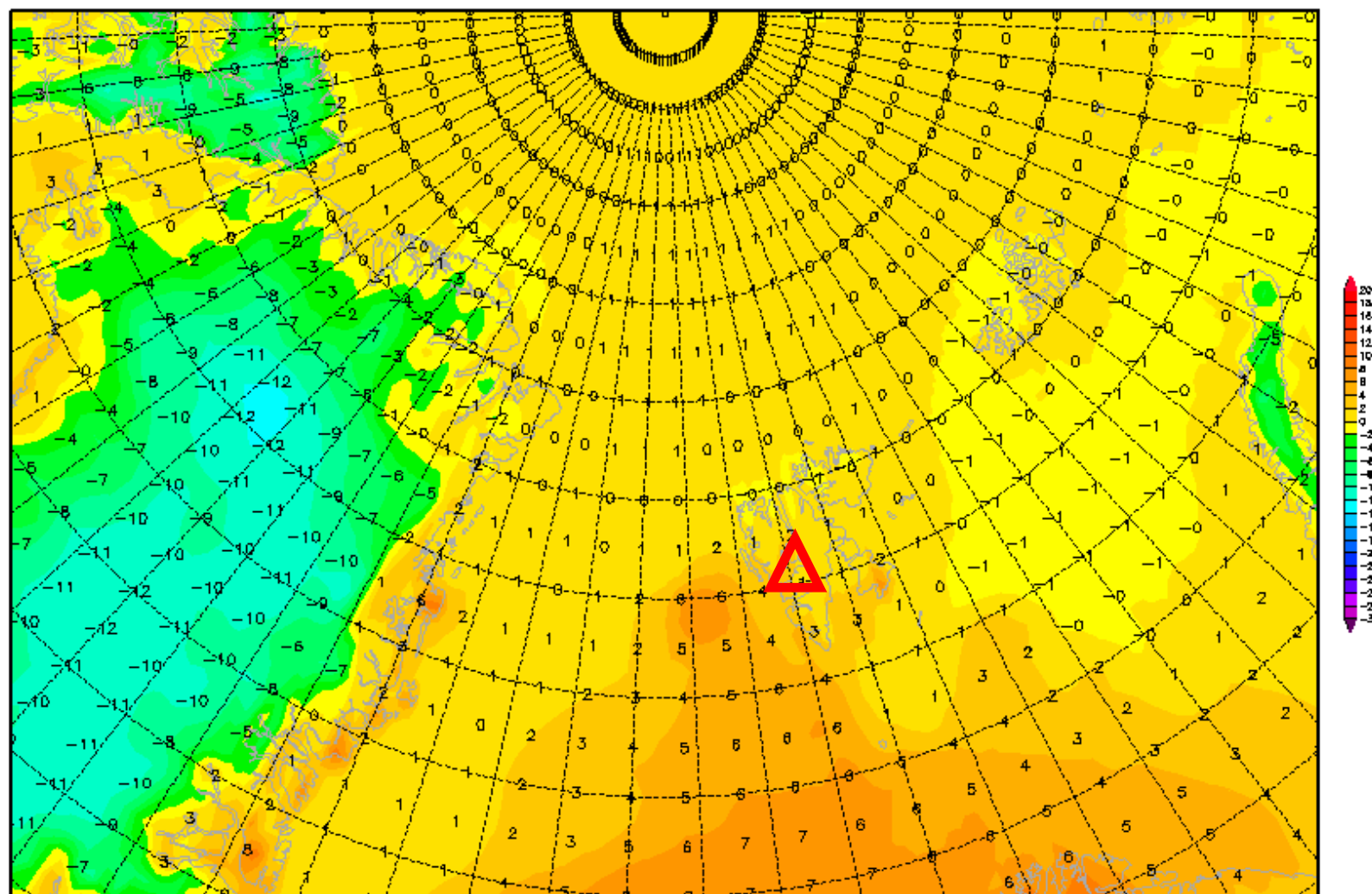
www.wetterzentrale.de 28 32 36 40 44 48 52 56 60 64 68 72 76 80 84 88 92 96 100

# 2-m temperature 12 June 2017 @ 12 UTC

Init : Sun,11JUN2017 00Z

Valid: Mon,12JUN2017 12Z

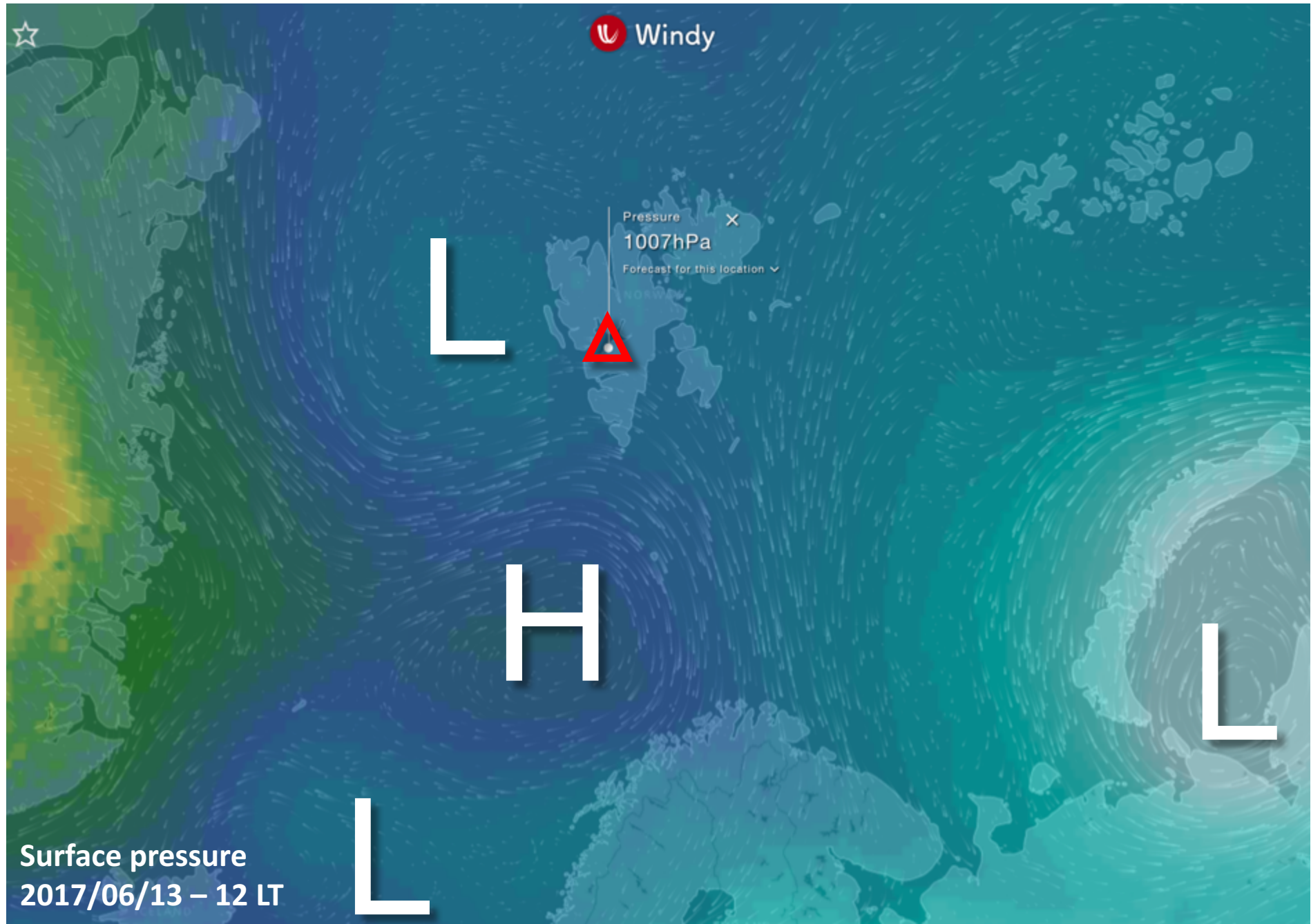
*2m Temperatur (°C)*



# Outlook

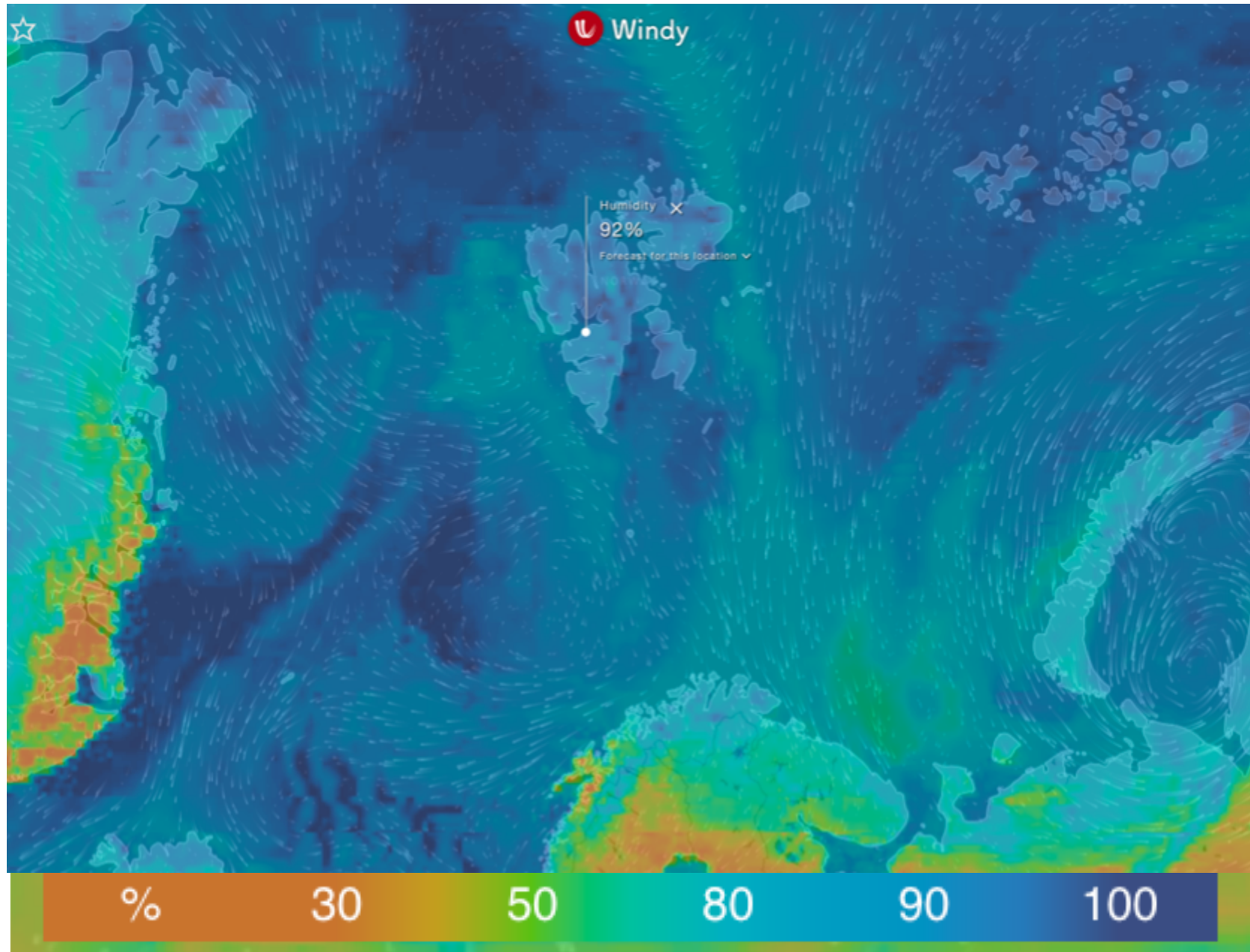
**Mon 12 June – Wed 14 June 2017**

# General Situation Tue 13 June 2017





# Rel. Humid 13 June 2017 @ 12:00

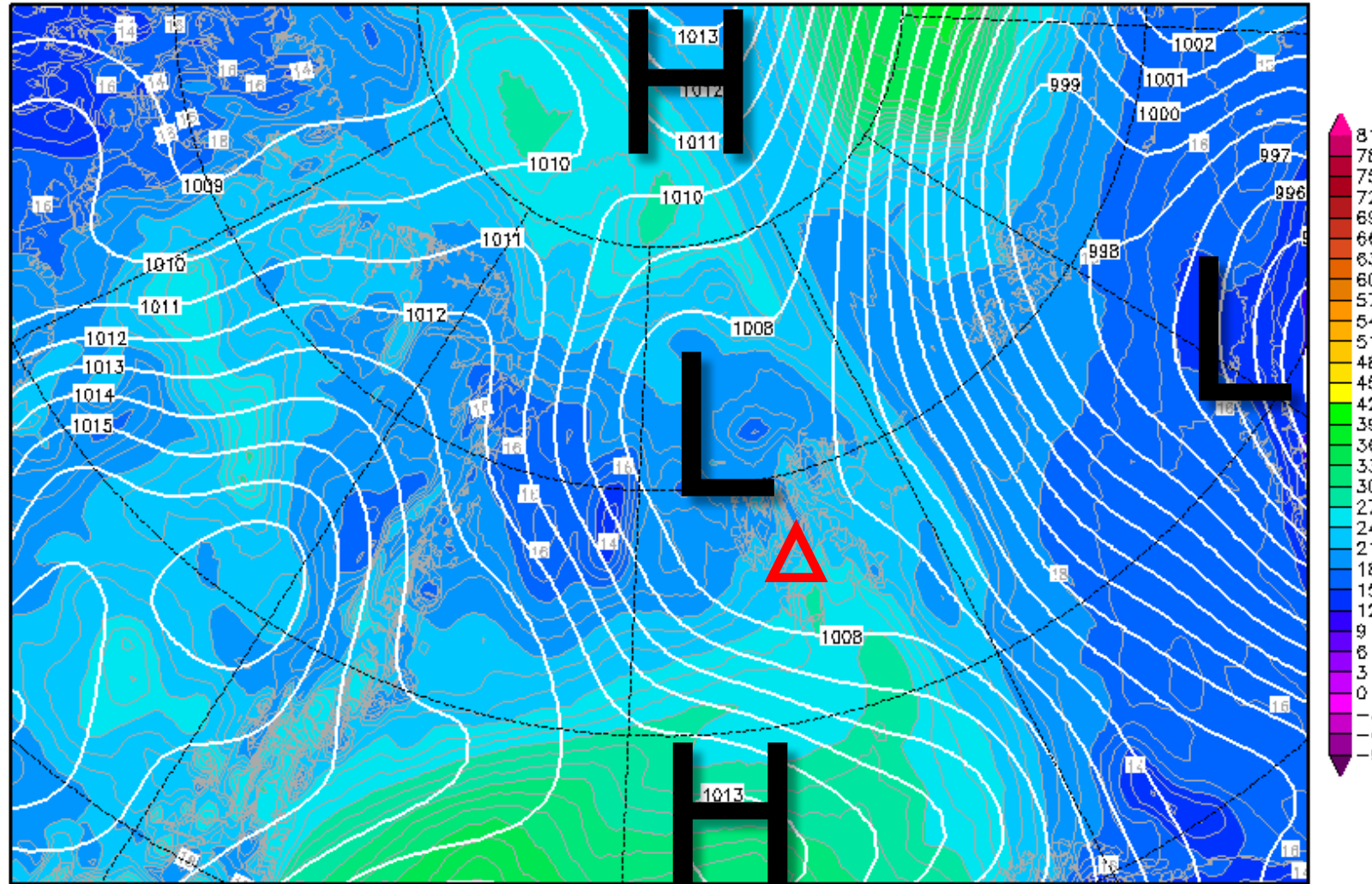


# 850-hPa Theta Equiv. 13 June 2017 @ 12 UTC

Init : Sun,11JUN2017 00Z

Valid: Tue,13JUN2017 12Z

*Bodendruck (hPa) und 850 hPa Aeq.Pot.T. (Grad C)*



Daten: GFS-Modell des amerikanischen Wetterdienstes

(C) Wetterzentrale

[www.wetterzentrale.de](http://www.wetterzentrale.de)

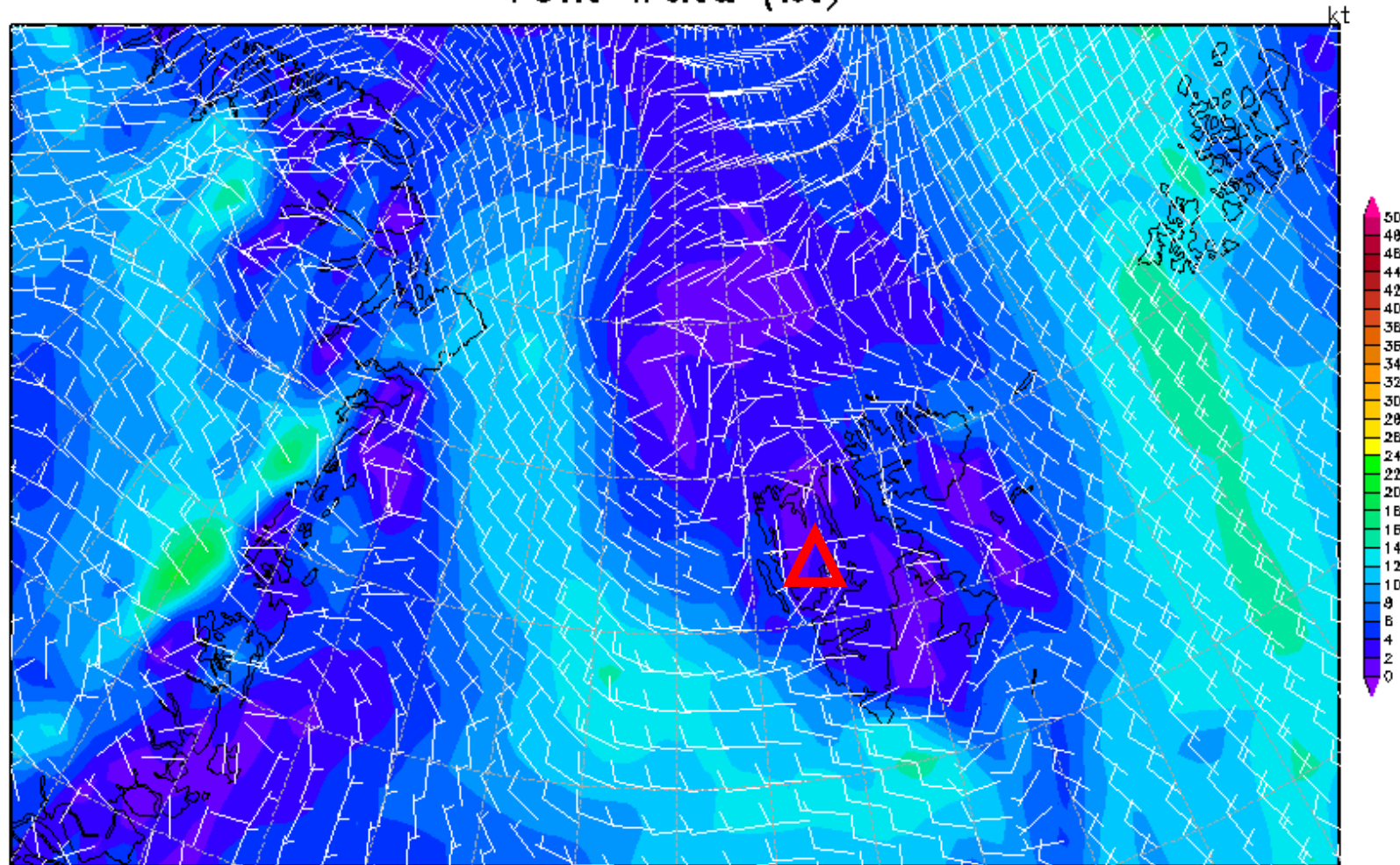


# 10m wind 13 June 2017 @ 12 UTC

Init : Sun,11JUN2017 00Z

Valid: Tue,13JUN2017 12Z

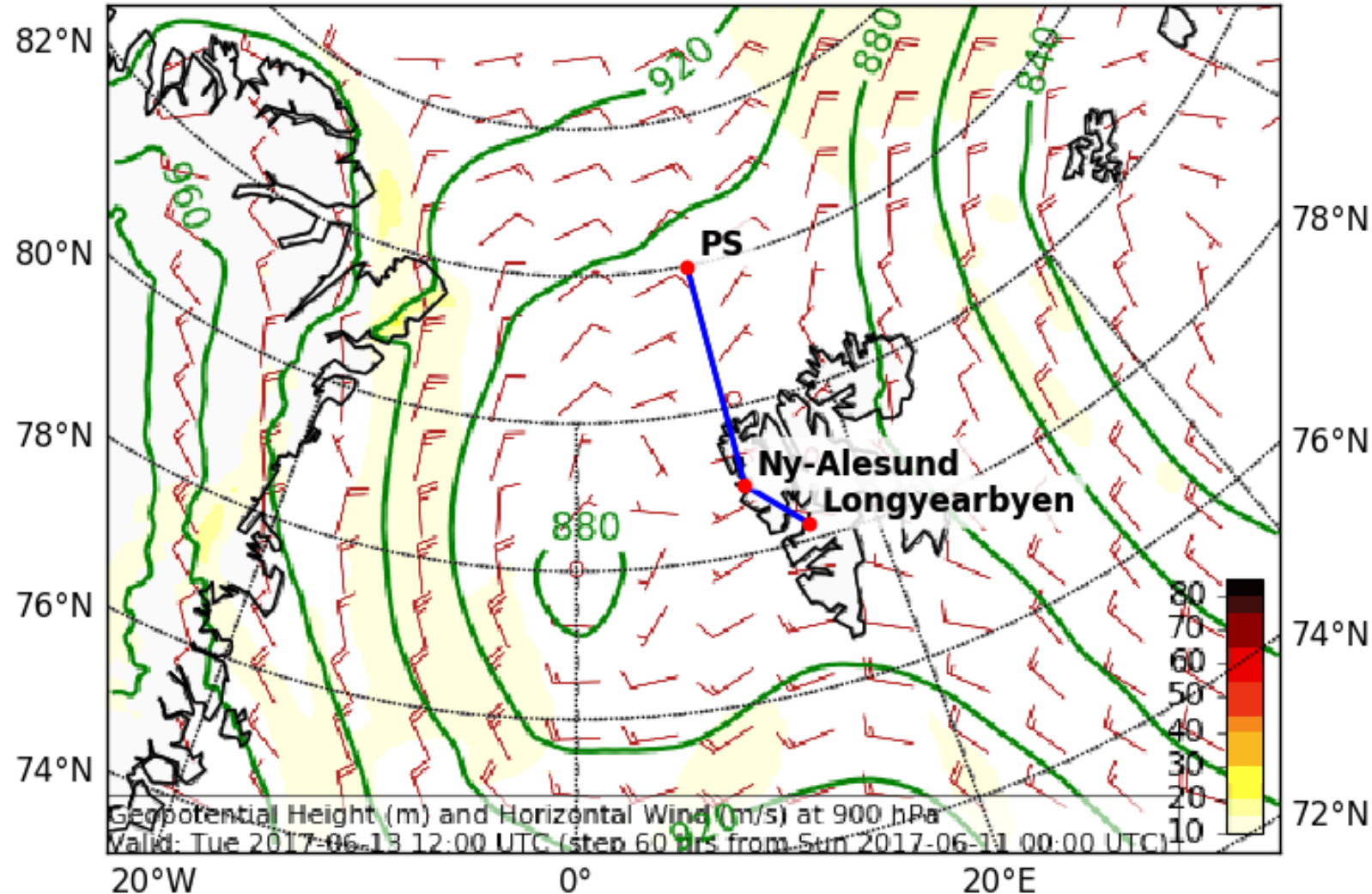
10m Wind (kt)



Daten: GFS-Modell des amerikanischen Wetterdienstes  
(C) Wetterzentrale  
[www.wetterzentrale.de](http://www.wetterzentrale.de)

# Wind, After Tomorrow 12 UTC

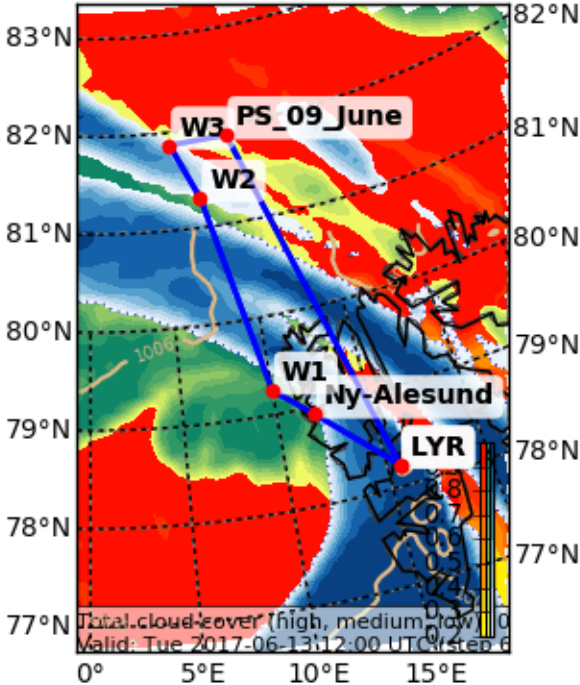
Geopotential Height (m) and Horizontal Wind (m/s) (Wind Speed 10-85 m/s) at 900 (hPa)  
Valid: Di 2017-06-13 12:00 UTC (step 60 hrs from So 2017-06-11 00:00 UTC)



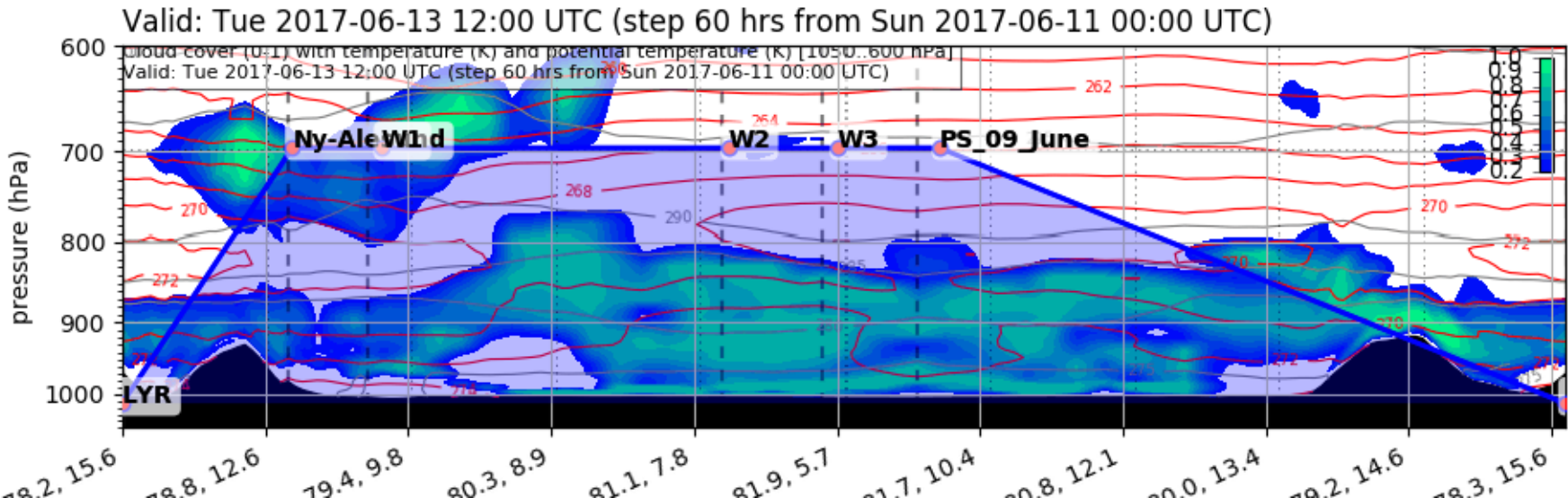
# Forecast

## Tuesday 12 UTC

Cloud Cover (0-1) (Total Cloud Cover)  
Valid: Tue 2017-06-13 12:00 UTC (step 60 hrs from Sun 2017-06-11 00:00 UTC)



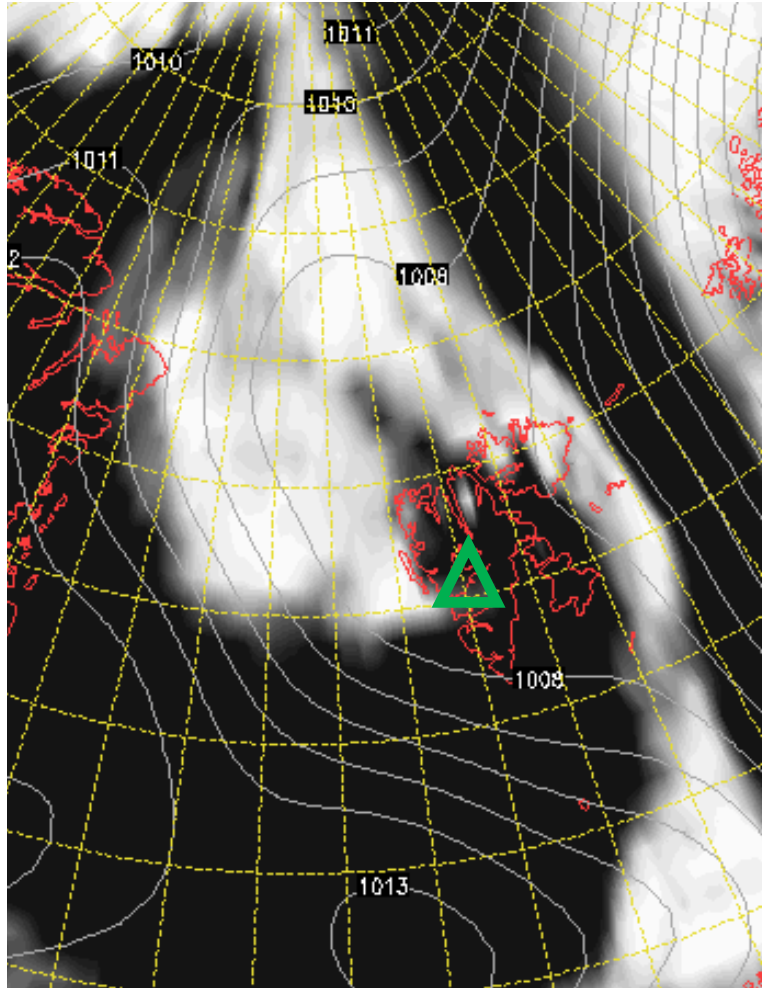
EPSG:77790000



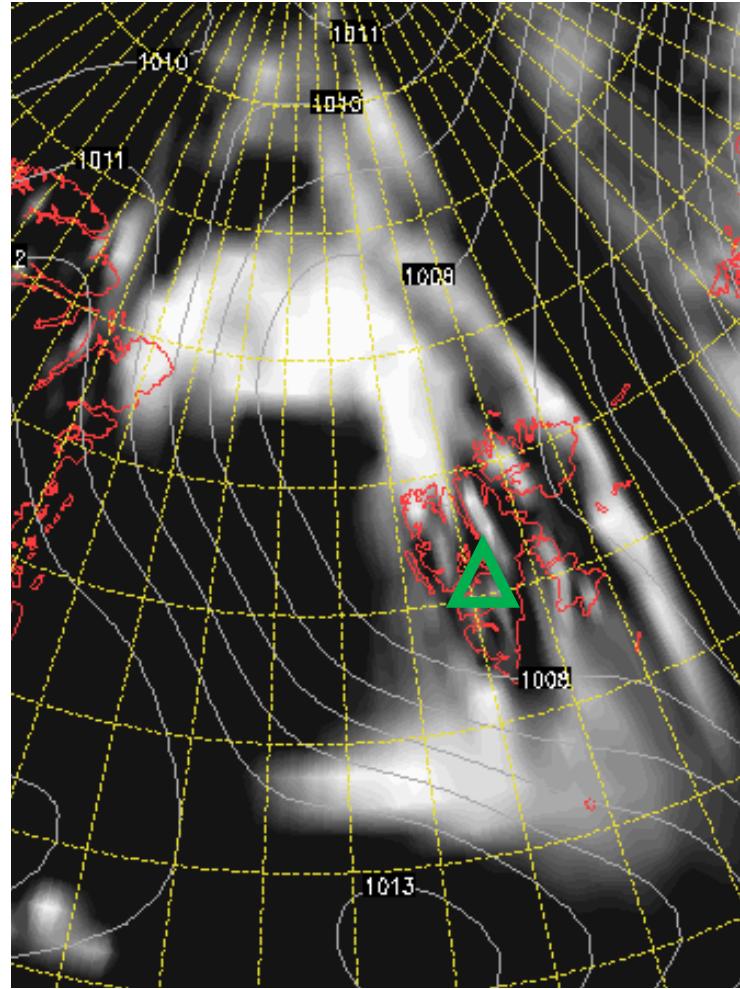


# Cloud Cover 13 June 2017 @ 12 UTC

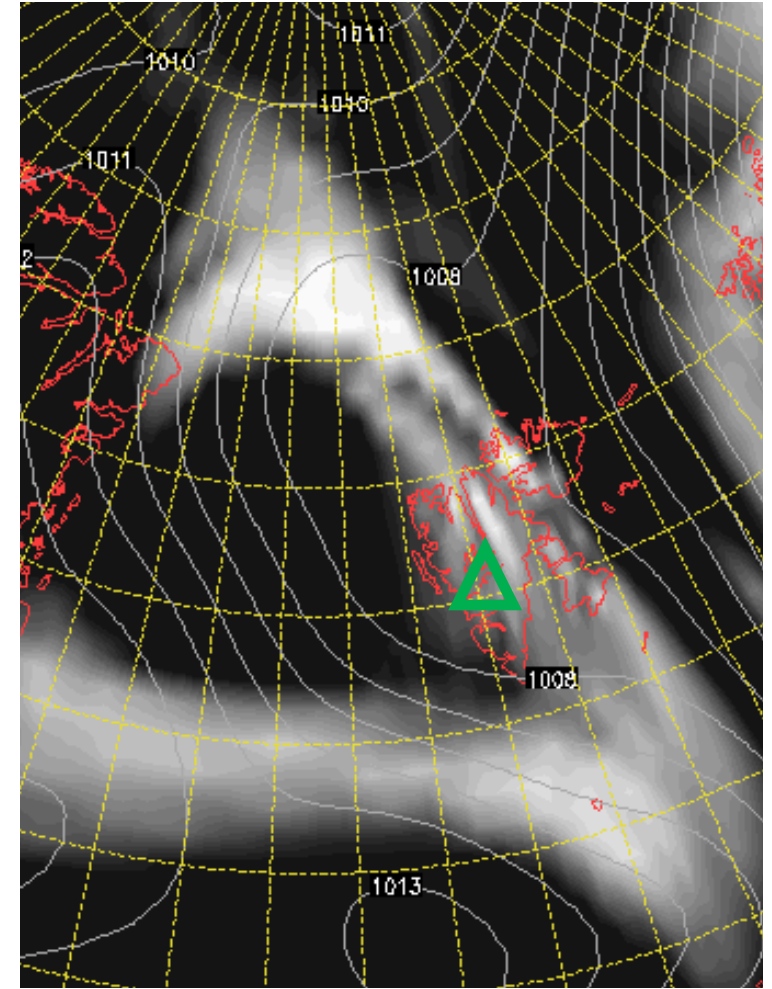
L



M



H



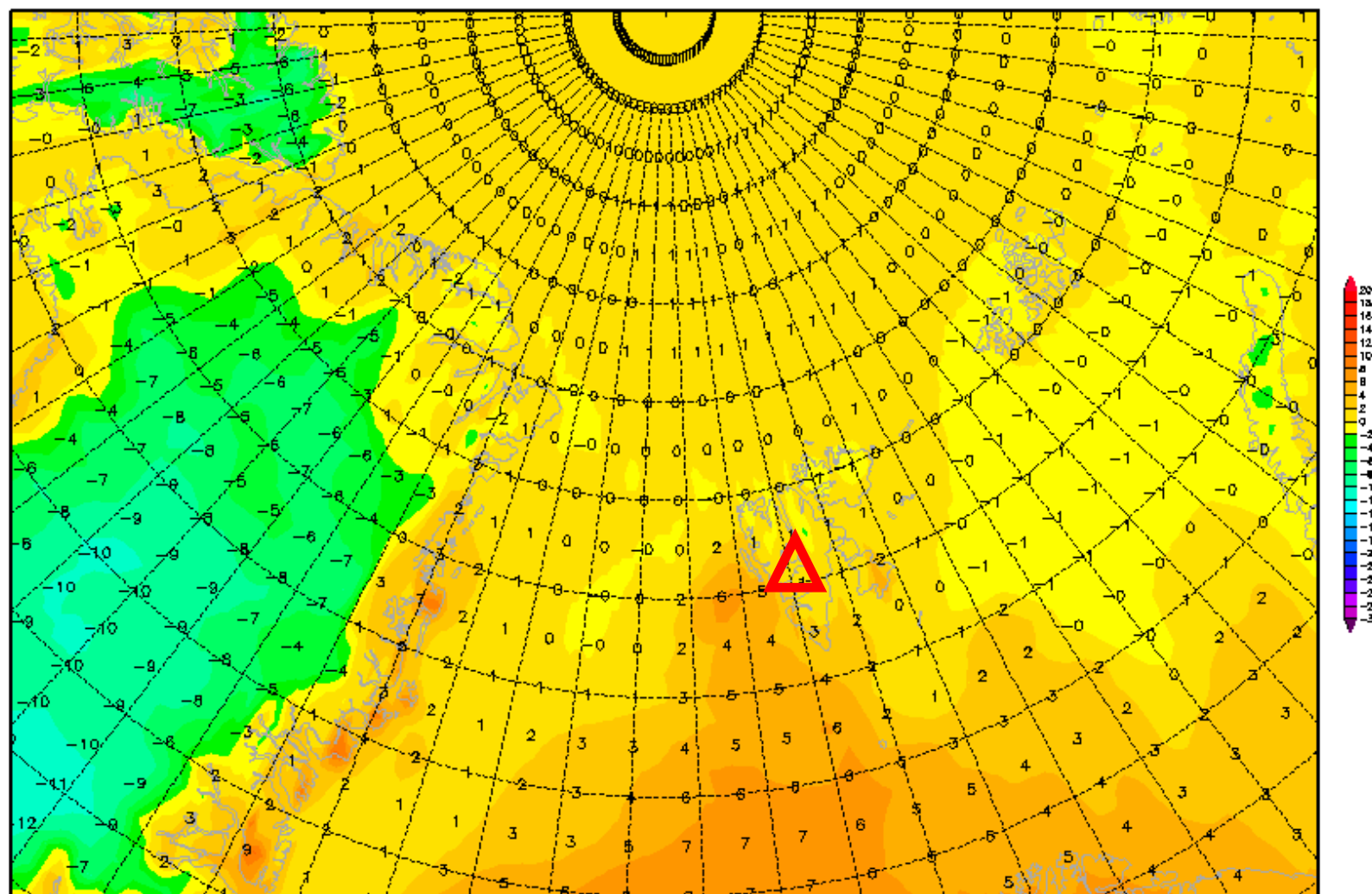


# 2-m temperature 13 June 2017 @ 12 UTC

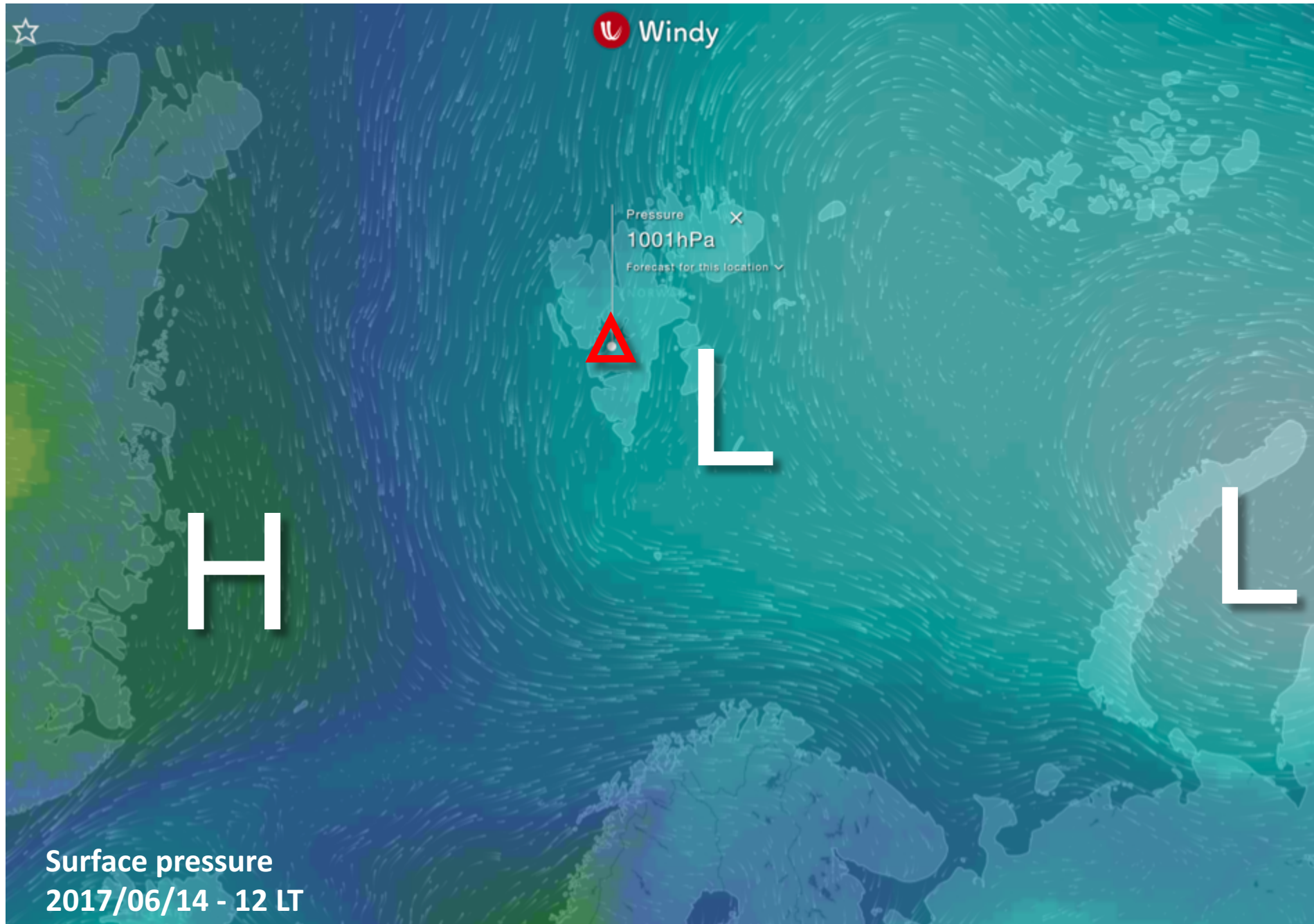
Init : Sun,11JUN2017 00Z

Valid: Tue,13JUN2017 12Z

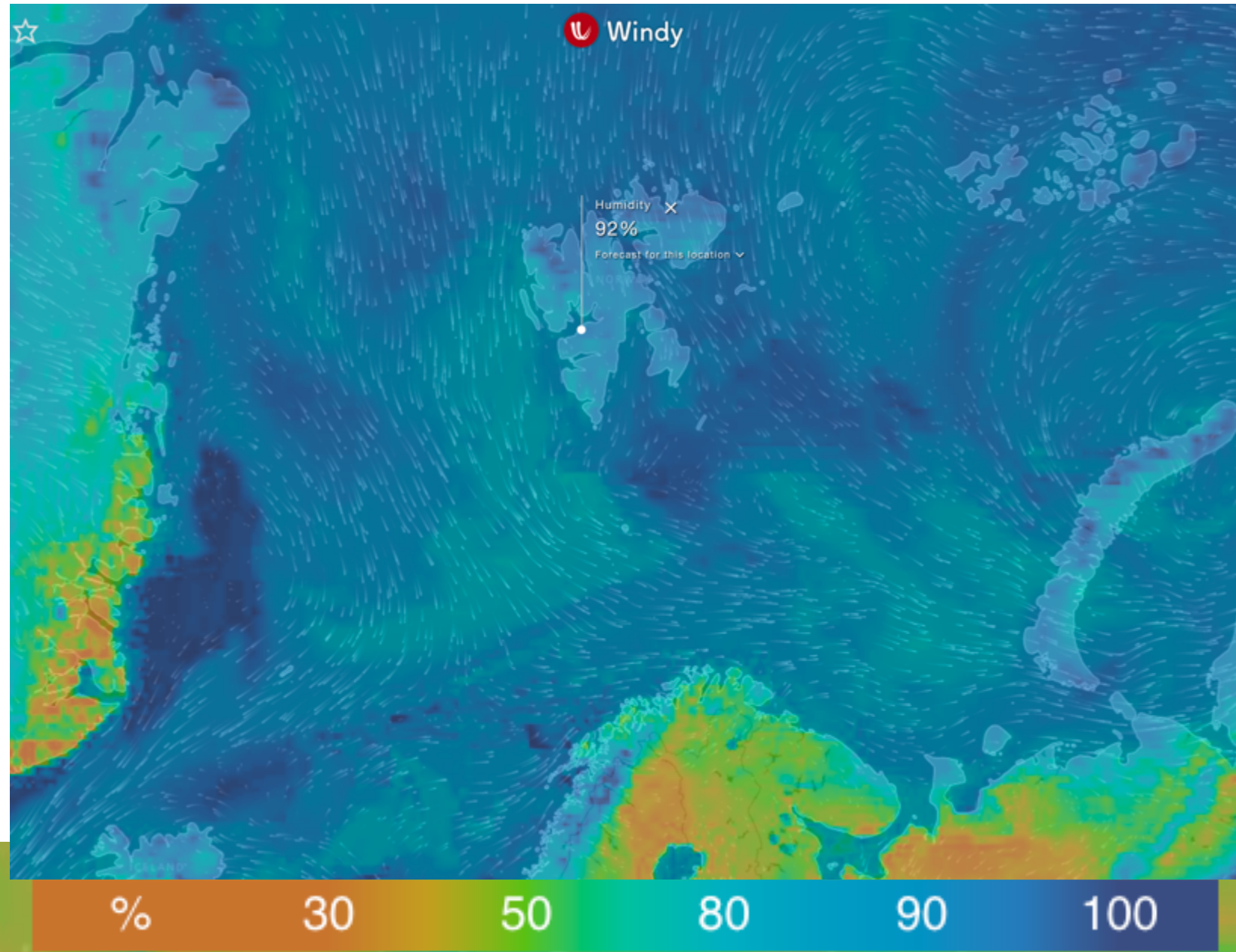
*2m Temperatur (°C)*



# General Situation Wed 14 June 2017



# Rel Humid 14 June 2017 @ 12:00



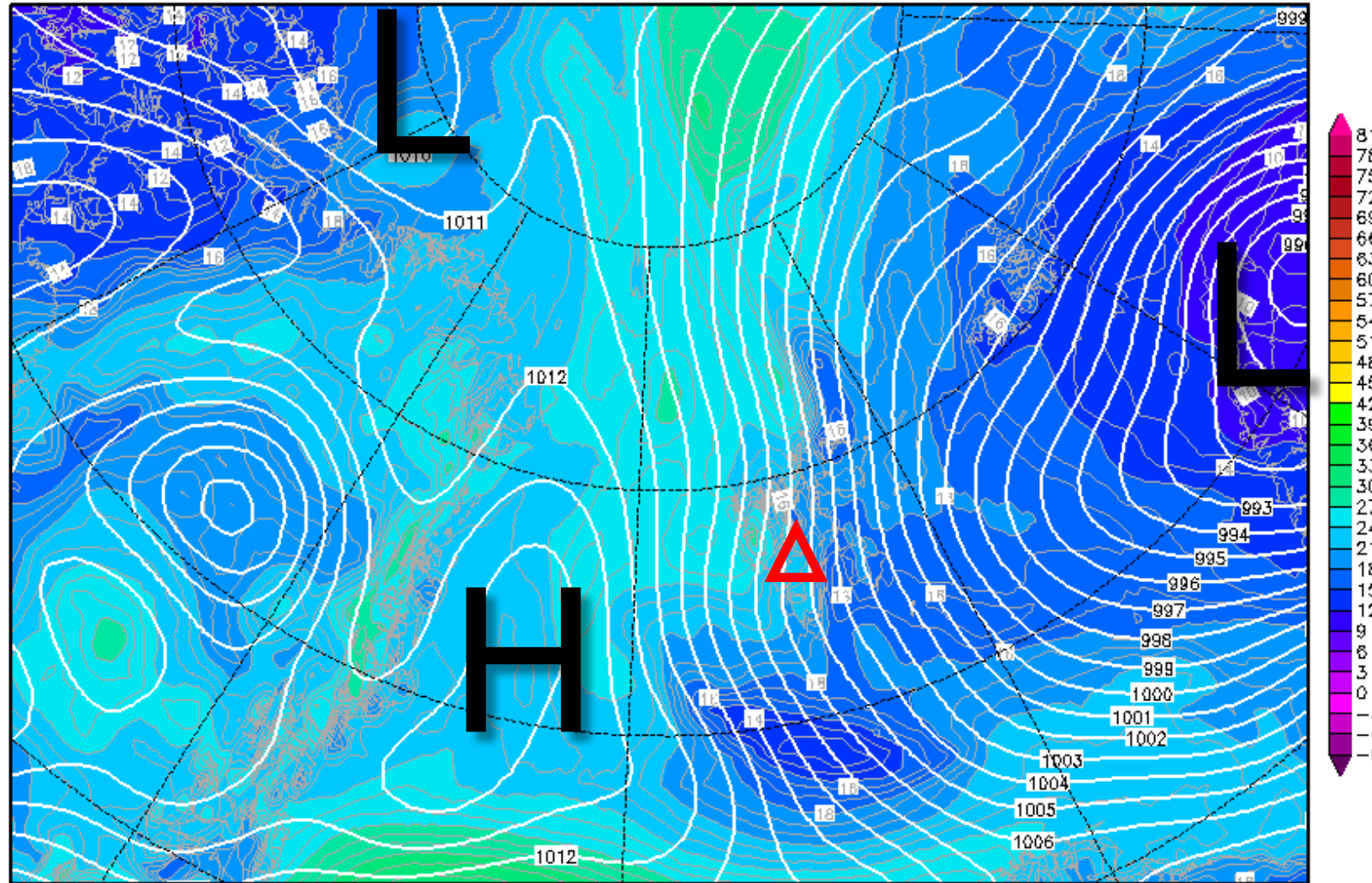


# 850-hPa Theta Equiv. 14 June 2017 @ 12 UTC

Init : Sun,11JUN2017 00Z

Valid: Wed,14JUN2017 12Z

*Bodendruck (hPa) und 850 hPa Aeq.Pot.T. (Grad C)*



Daten: GFS-Modell des amerikanischen Wetterdienstes

(C) Wetterzentrale

[www.wetterzentrale.de](http://www.wetterzentrale.de)

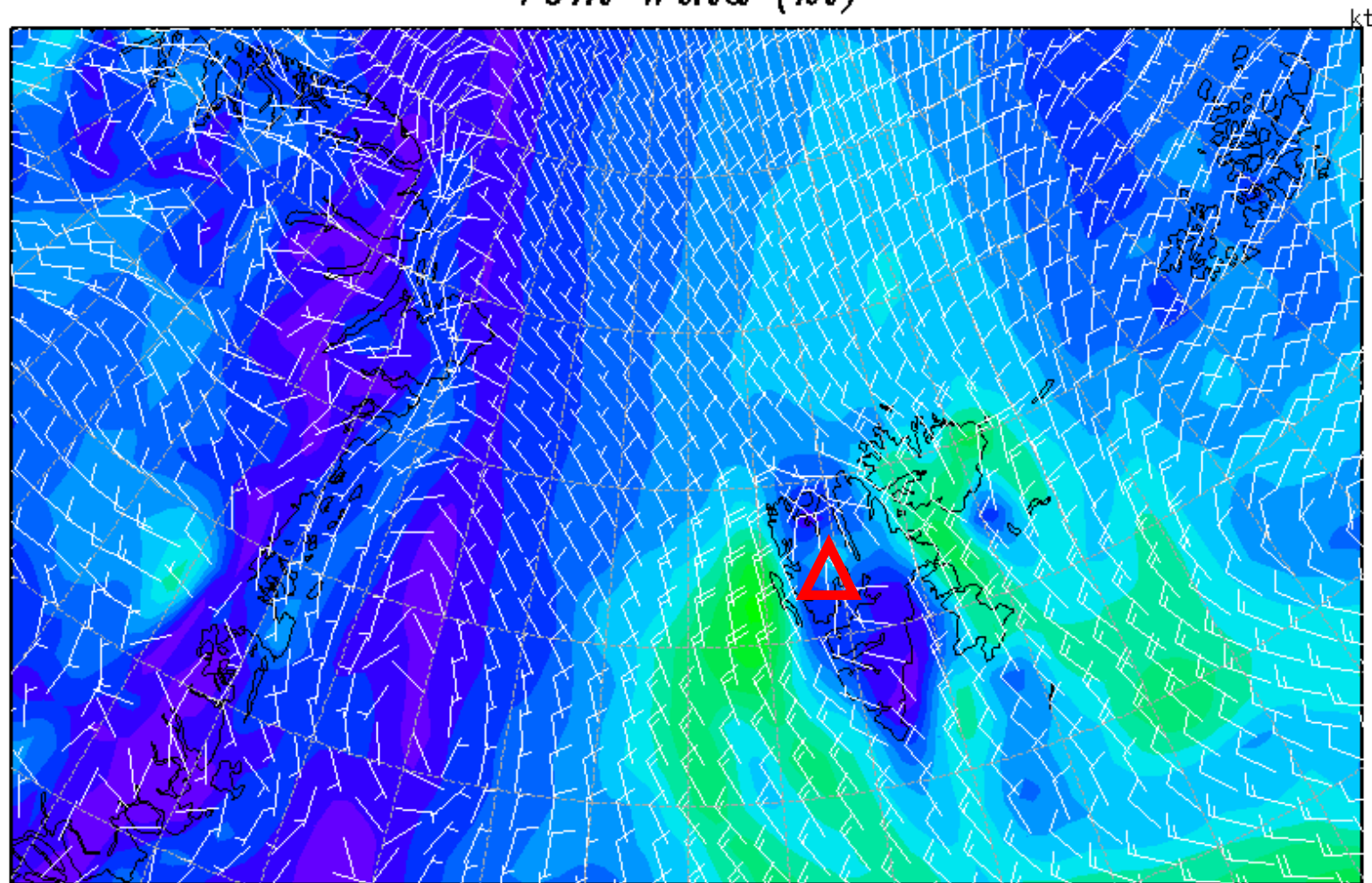


# 10m wind 14 June 2017 @ 12 UTC

Init : Sun,11JUN2017 00Z

Valid: Wed,14JUN2017 12Z

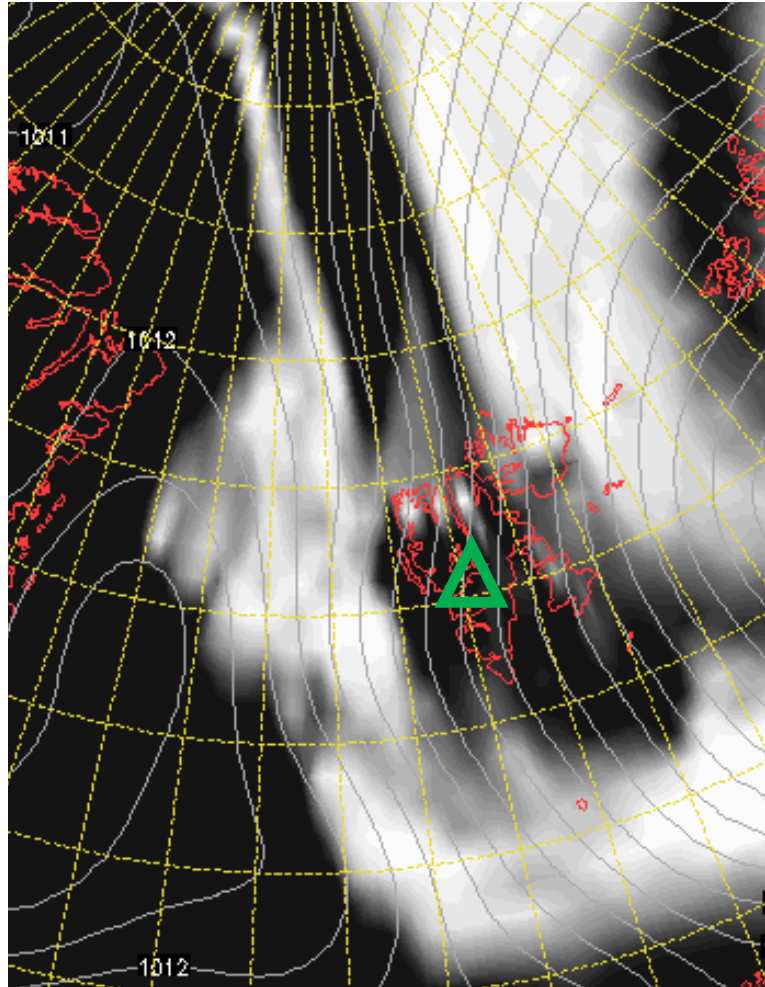
10m Wind (kt)



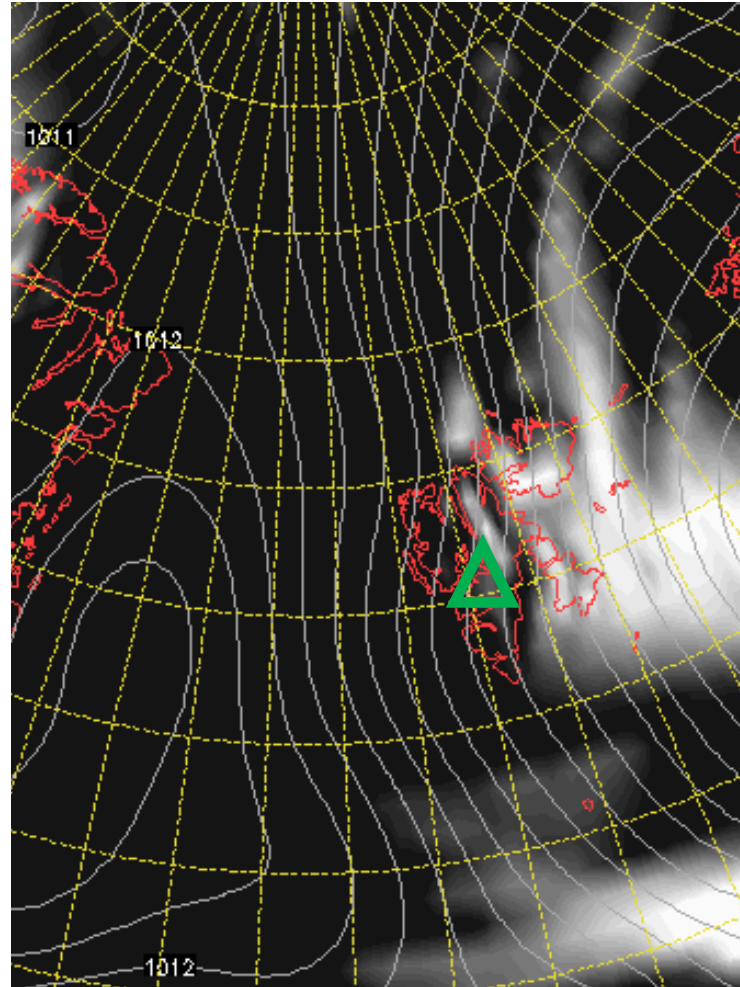
Daten: GFS-Modell des amerikanischen Wetterdienstes  
(C) Wetterzentrale  
[www.wetterzentrale.de](http://www.wetterzentrale.de)

# Cloud Cover 14 June 2017 @ 12 UTC

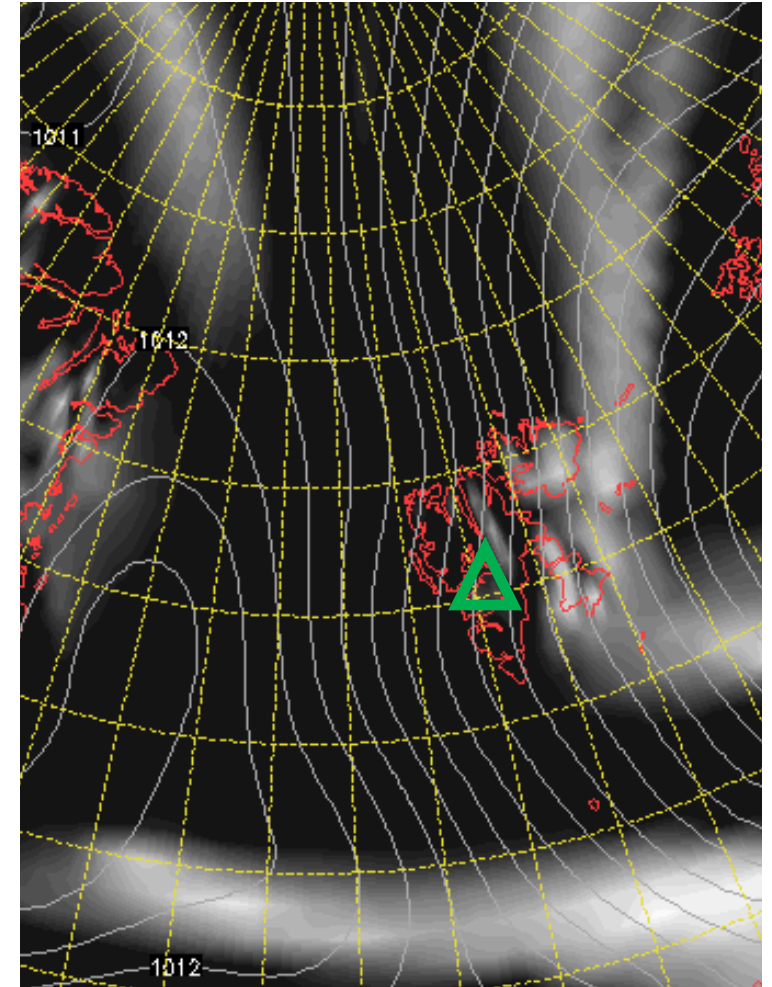
L



M



H

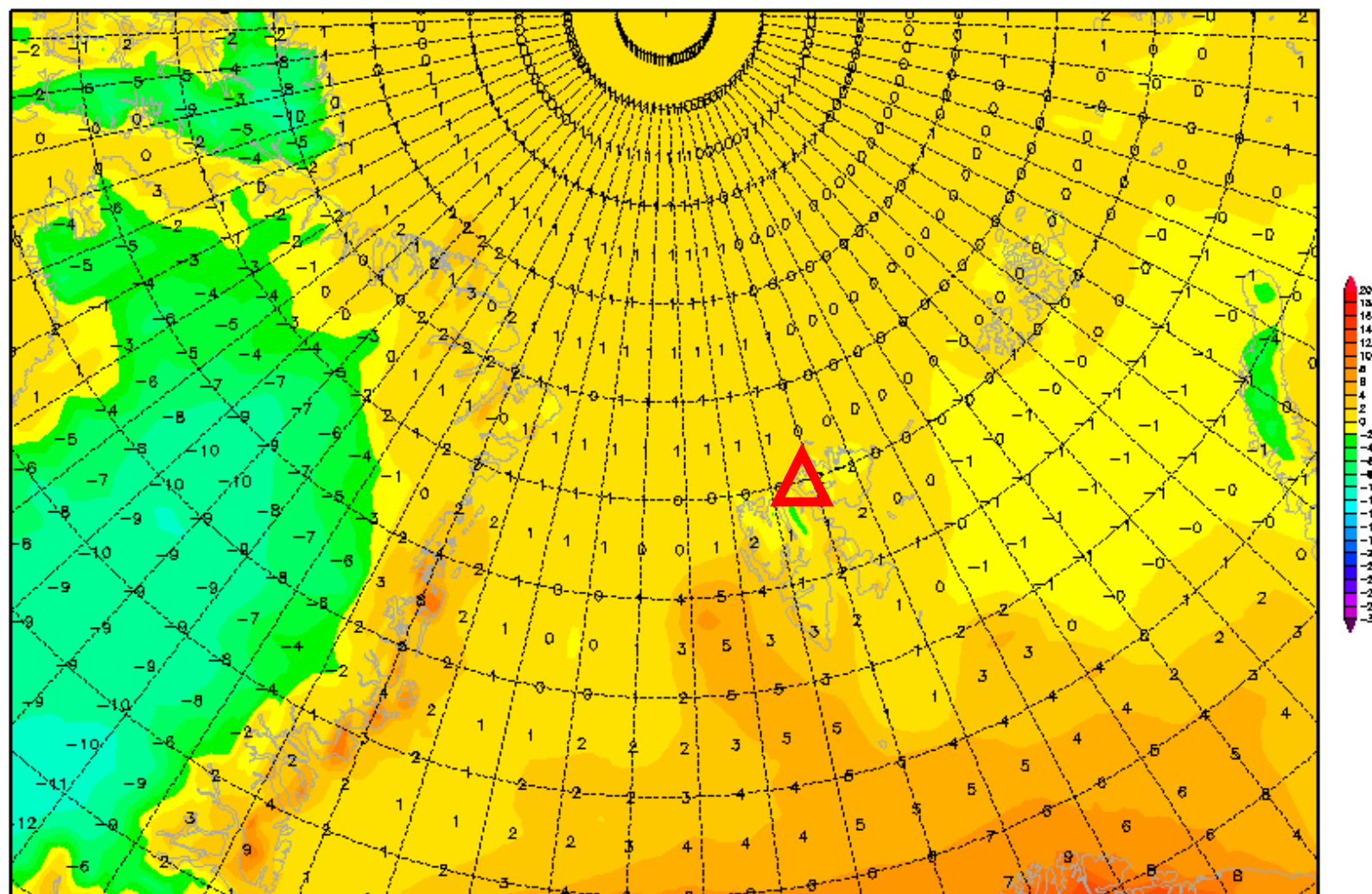


# 2-m temperature 14 June 2017 @ 12 UTC

Init : Sun,11JUN2017 00Z

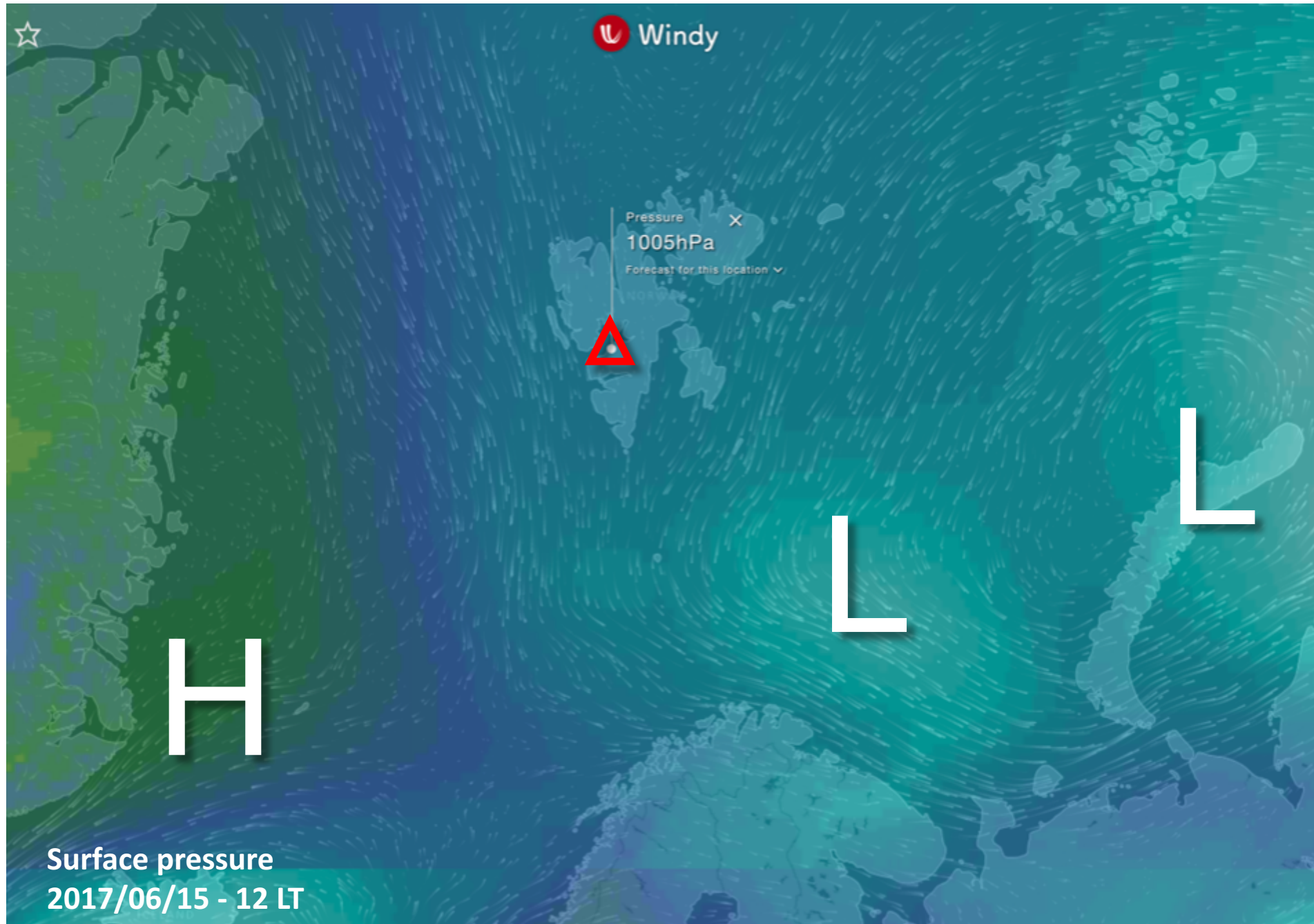
Valid: Wed,14JUN2017 12Z

*2m Temperatur (°C)*



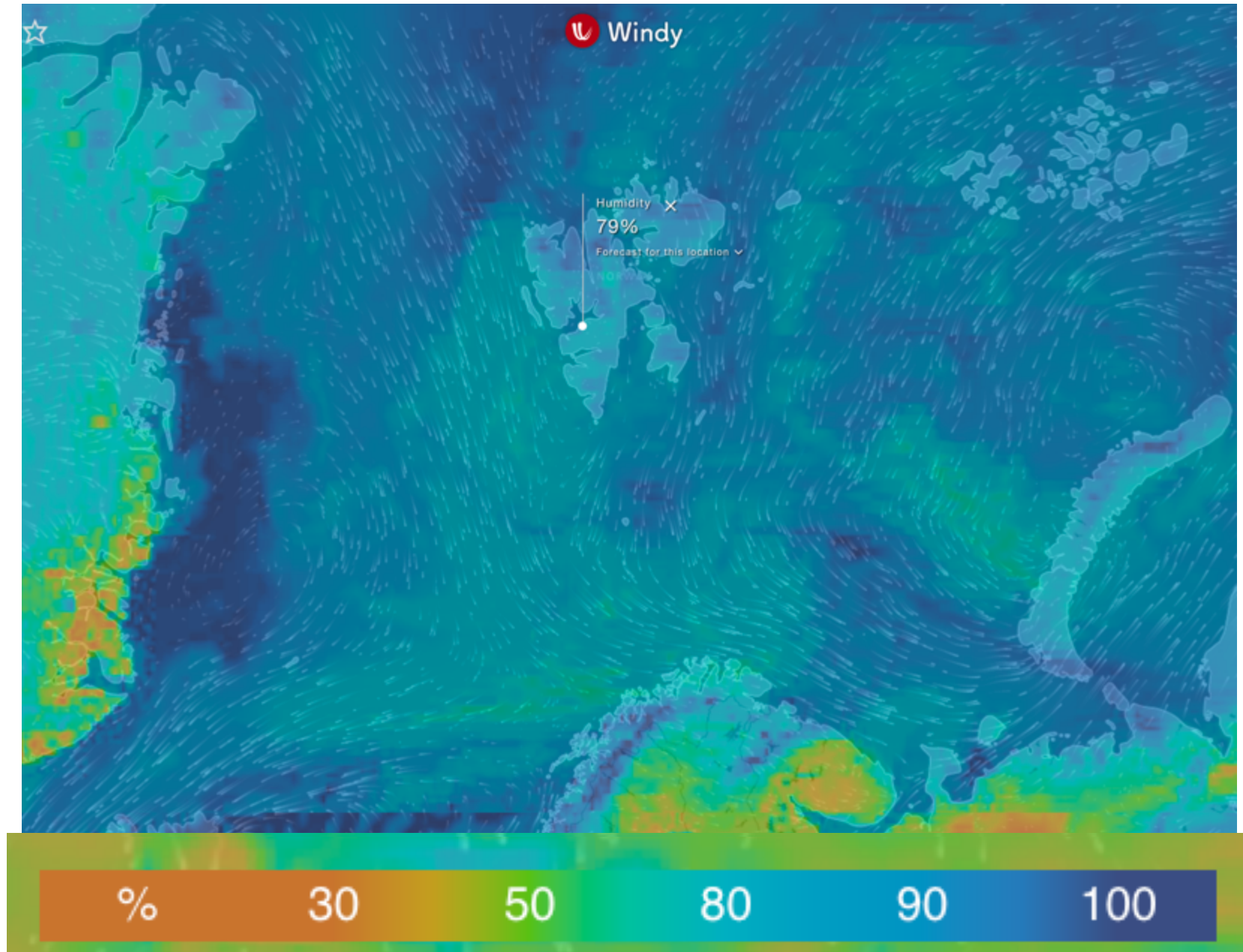


# General Situation Thu 15 June 2017





# Rel. Humid 15 June 2017 @ 12:00

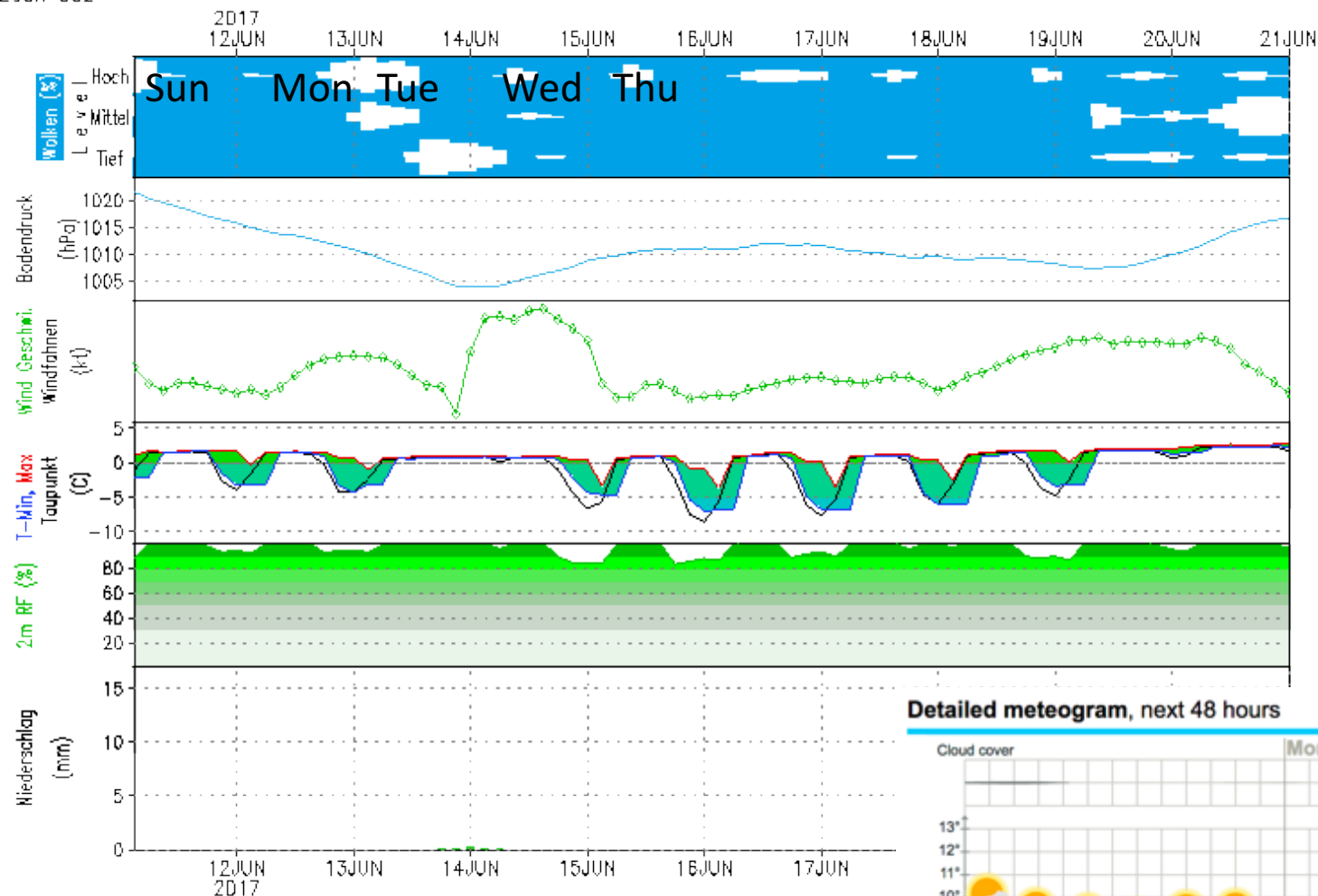


# GFS – Meteogramm

Lon: 15.63 Lat: 78.22 Hgt: 331m

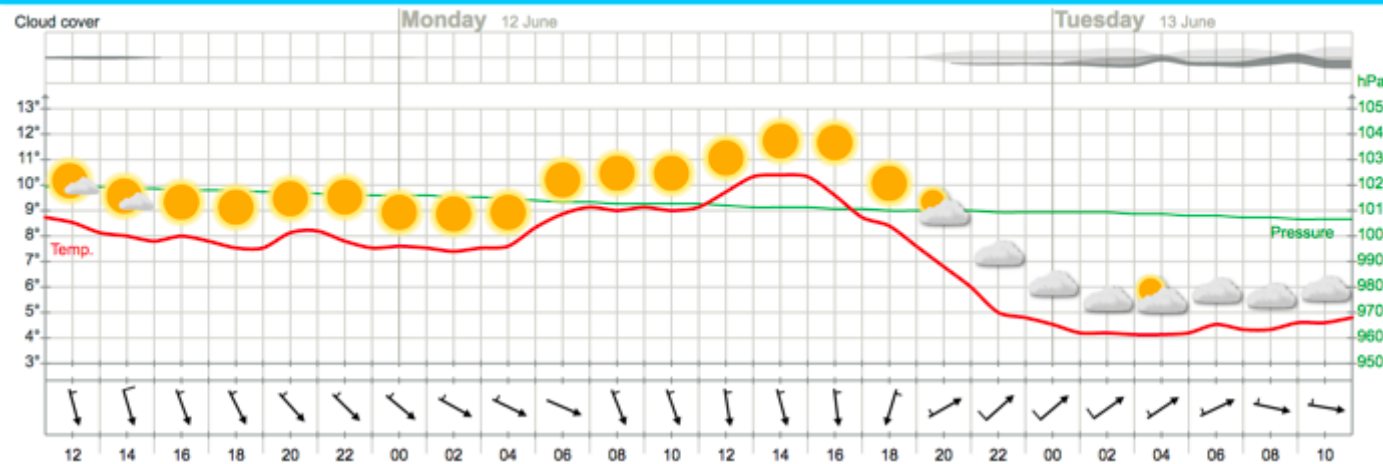
Lauf: 00Z

## Outlook – Meteogram

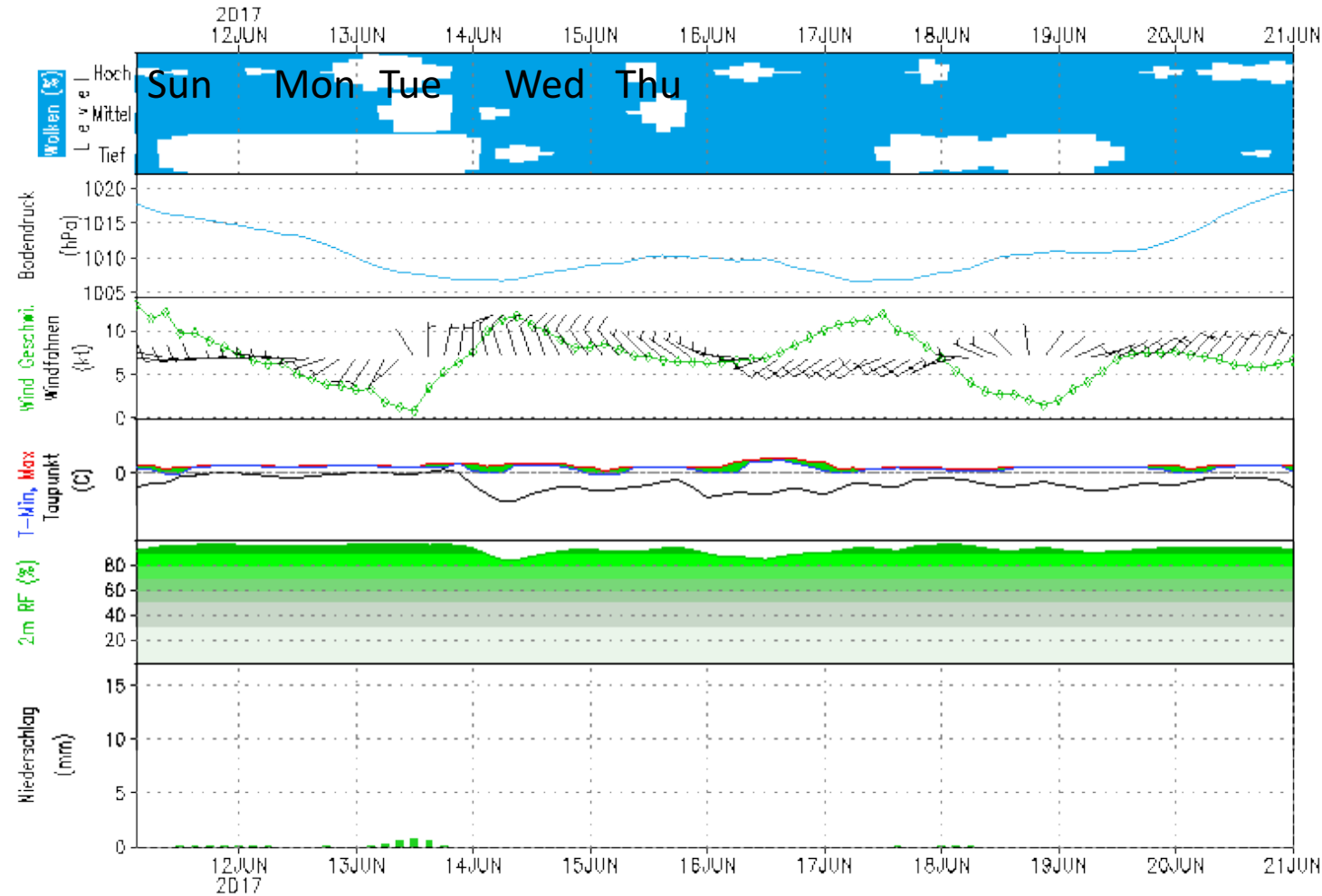


Heute kein Sonnenaufgang  
Heute kein Sonnenuntergang

### Detailed meteogram, next 48 hours



YR.no



Heute kein Sonnenaufgang  
Heute kein Sonnenuntergang

